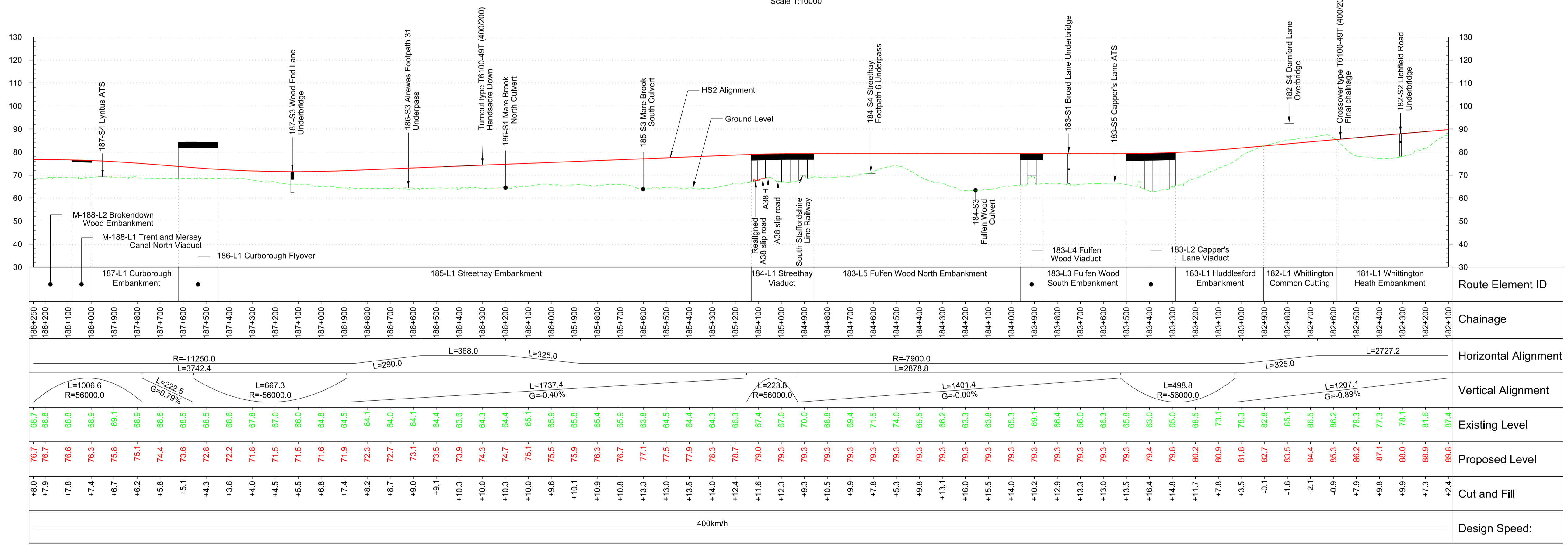


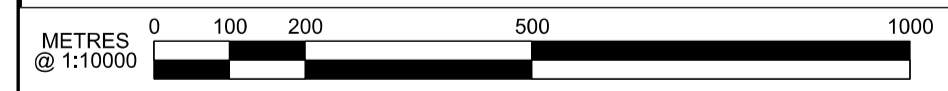
For Continuation Refer To Drawings: C223-CSI-CV-DPP-030-000012  
C223-CSI-CV-DPP-030-000013

For Continuation Refer To Drawing C223-CSI-CV-DPP-030-000010

Plan Scale 1:10000



Profile Scale H 1:10000 V 1:1000



Note: Bridge Profiles indicated at FRL to HS2 track

Rev	Description	Drawn	Checked	Con App	HS2 App
P10	Condition B. Code 1. Fit for hybrid bill submission	NOR	MC	PD	17/12/13
P09	Issued for CP3	NOR	MC	PD	29/11/13
P08	Revised Interim Condition B	NOR	MC	PD	21/10/13
P07	Revised Interim Condition B	NOR	PD	PD	29/08/13
P06	Interim Condition B	JHI	MC	PD	28/06/13

HS2 accepts no responsibility for any circumstances which arise from the reproduction of this document after alteration, amendment or abbreviation or if it is issued in part or issued incompletely in any way.

© Crown Copyright and database right 2013. All rights reserved. Ordnance Survey Licence number 100049190

© Crown Copyright material is reproduced with the permission of Land Registry under delegated authority from the Controller of HMSO.

This material was last updated on 2013 and may not be copied, distributed, sold or published without the formal permission of Land Registry. Only an official copy of a title plan or register obtained from the Land Registry may be used for legal or other official purposes.

Scale with caution as distortion can occur.

**Legends/Notes:**

- Depot, station, headhouse or portal building
- Tunnel portal
- Electricity substation
- Land drainage area
- Ecological mitigation pond
- Balancing pond
- Replacement floodplain storage
- Woodland habitat creation
- Wetland habitat creation
- Grassland habitat creation
- Landscape mitigation planting (scrub / woodland)
- Grassed areas
- Sustainable placement
- Public realm
- Engineering earthworks
- Landscape earthworks
- Rail alignment formation
- Returned to suitable development use
- County boundary
- Borough / District boundary
- Community forum boundary
- Watercourse diversion
- Existing watercourse
- Ditches - new
- Hedgerow habitat creation
- Main utility works
- Existing public right of way (PRoW)
- New, diverted or realigned PRoW
- Stopped-up PRoW
- Tunnels external extent
- Rail alignment
- HS2 Access road
- Noise fence barrier
- Chainage (e.g. 10+000)

Registered in England  
Registration No. 06791686  
Registered office:  
Eland House,  
Bressenden Place,  
London, SW1E 5DU

Creator/Organizer  
**Capita Symonds Ineco JV**

HS2 Security Classification  
**INTERNAL**

Zone  
**Country North**

Design Stage  
**hybrid bill submission**

Drawing Title  
**Main Line**  
Sheet 47 of 49  
Chainage 182+100 to 186+200

Project/Contract  
**Country North Design**

Discipline/Function  
**Civil**

Drawn	Checked	Approved
NOR	PD	PD

Date  
11/03/2013

Scale  
AS SHOWN

Size  
A1

Drawing No.  
C223-CSI-CV-DPP-030-000011

Rev.  
P10