



UK SLAUGHTER STATISTICS

The latest National Statistics produced by Defra on UK slaughterings of cattle, sheep and pigs were released on 18 April 2013 according to the arrangements approved by the UK Statistics Authority.

This monthly notice will be updated at 09:30 on 23 May 2013.

Contents

Section 1	UK slaughter numbers	page 2
Section 2	UK average dressed carcase weights	page 2
Section 3	UK home-killed meat production	page 3
Section 4	UK average weekly slaughter estimates	page 3 to 4
Section 5	UK slaughterings by country	page 5
Section 6	Methodology, notes and revisions policy	page 6

Key points

This release shows the latest monthly information on the slaughtering of cattle, sheep and pigs. It also includes dressed carcase weight and meat production information. The key results for **March 2013** are given below:

- **Cattle:** UK prime cattle slaughterings were 6.0 per cent lower than in March 2012 at 148 thousand head. Beef and veal production was 64 thousand tonnes, 6.0 per cent lower than in March 2012.
- **Sheep:** UK clean sheep slaughterings were 9.5 per cent higher than in March 2012 at 895 thousand head. Mutton and lamb production was 21 thousand tonnes, 4.7 per cent higher than in March 2012.
- **Pigs:** UK clean pig slaughterings were 0.5 per cent lower than in March 2012 at 767 thousand head. Pigmeat production was 64 thousand tonnes, 0.3 per cent lower than in March 2012.

This notice and additional tables providing longer term trends of slaughterings, meat production and supplies are available to download at: <https://www.gov.uk/government/publications/cattle-sheep-and-pig-slaughter>

Enquiries to: Sarah Thompson, Department for Environment, Food and Rural Affairs, Room 301, Foss House, Kings Pool, 1 - 2 Peasholme Green, York YO1 7PX. Tel: ++ 44 (0)1904 455097, email:sarah.thompson@defra.gsi.gov.uk

A National Statistics publication. National Statistics are produced to high professional standards. They undergo regular quality assurance reviews to ensure that they meet customer needs. They are produced free from any political interference. For general enquiries about National Statistics, contact the National Statistics Public Enquiry Service: tel. 0845 601 3034 email info@statistics.gov.uk. You can also find National Statistics on the internet at www.statistics.gov.uk.

Section 1: UK monthly slaughter estimates

This table shows monthly estimates of the number of cattle, sheep and pigs slaughtered for meat for human consumption in the United Kingdom. The survey is run according to statistical, rather than calendar months, the number of weeks in the statistical month is specified below.

Table 1: UK monthly slaughter estimates Thousand Head

United Kingdom	January 2013 5 weeks	February 2013 4 weeks	March 2013 4 weeks
Steers	87	76	72
Heifers	72	61	57
Young Bulls	22	19	19
Cows and Adult Bulls	64	49	43
Calves	8	9	10
Other Sheep and Lambs	1102	897	895
Ewes and Rams	189	159	148
Clean Pigs	946	786	767
Sows and Boars	25	20	21

Section 2: UK average dressed carcass weights

This table shows the monthly average dressed carcass weight of livestock slaughtered for meat for human consumption in the United Kingdom.

Table 2: UK average dressed carcass weights Kilogramme

United Kingdom	January 2013	February 2013	March 2013
Steers	363.4	364.9	366.6
Heifers	318.8	317.5	317.4
Young Bulls	340.4	331.4	332.2
Cows and Adult Bulls	307.9	308.9	305.9
Calves	47.8	37.6	34.2
Other Sheep and Lambs	19.0	19.1	19.1
Ewes and Rams	25.9	25.8	25.6
Clean Pigs	79.8	79.8	79.2
Sows and Boars	145.2	145.8	140.2

Section 3: UK monthly home-killed production of meat

This table shows the monthly volumes of meat produced in the United Kingdom. Data is shown according to statistical, rather than calendar months, number of weeks in statistical month as specified.

Table 3: UK monthly home-killed production of meat

Thousand Tonnes

United Kingdom	January 2013	February 2013	March 2013
	5 weeks	4 weeks	4 weeks
Beef	82	69	64
Mutton and Lamb	26	21	21
Pigmeat	79	66	64

Section 4: UK average weekly slaughterings

This following table shows the average weekly slaughter figures for the last thirteen months. The monthly slaughter figures in section one are affected by the number of weeks in the statistical month. To get a clearer measure of trends weekly averages are calculated by dividing the number of livestock slaughtered each month by the number of weeks in the statistical month.

Longer term trends can be seen in the charts following this table.

Table 4: UK average weekly slaughterings

Thousand Head

United Kingdom	2012										2013		
	Mar	Apr	May	Jun	Jul	Aug	Sep	Oct	Nov	Dec	Jan	Feb	Mar
Steers	20	20	19	17	17	17	19	20	20	17	17	19	18
Heifers	15	14	14	12	12	12	13	14	15	14	14	15	14
Young Bulls	5	5	6	7	7	6	6	5	5	4	4	5	5
Cows and Adult Bulls	10	10	11	11	12	12	14	16	17	12	13	12	11
Calves	2	1	1	1	1	1	2	2	2	2	2	2	2
Other Sheep and Lambs	204	189	191	196	230	262	260	293	268	263	220	224	224
Ewes and Rams	33	31	31	31	35	38	37	44	38	39	38	40	37
Clean Pigs	193	187	189	185	192	195	197	201	208	192	189	197	192
Sows and Boars	5	5	5	5	5	5	6	5	5	4	5	5	5

Chart 4:1 United Kingdom average weekly slaughtering – Cattle

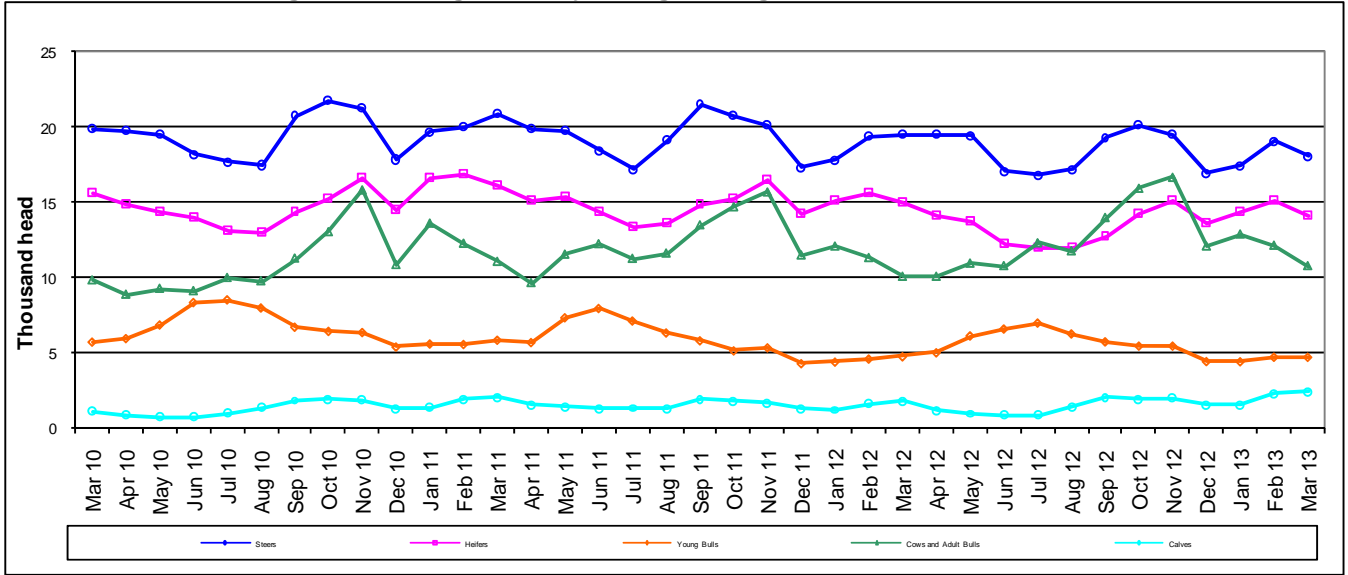


Chart 4:2 United Kingdom average weekly slaughtering – Sheep

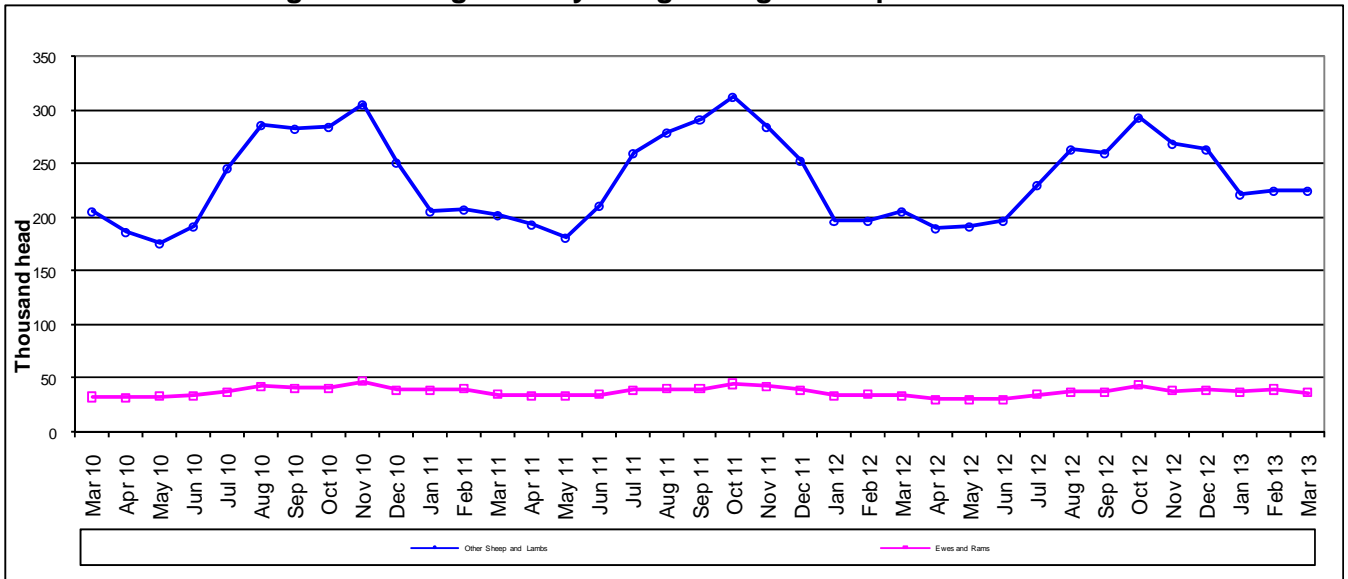
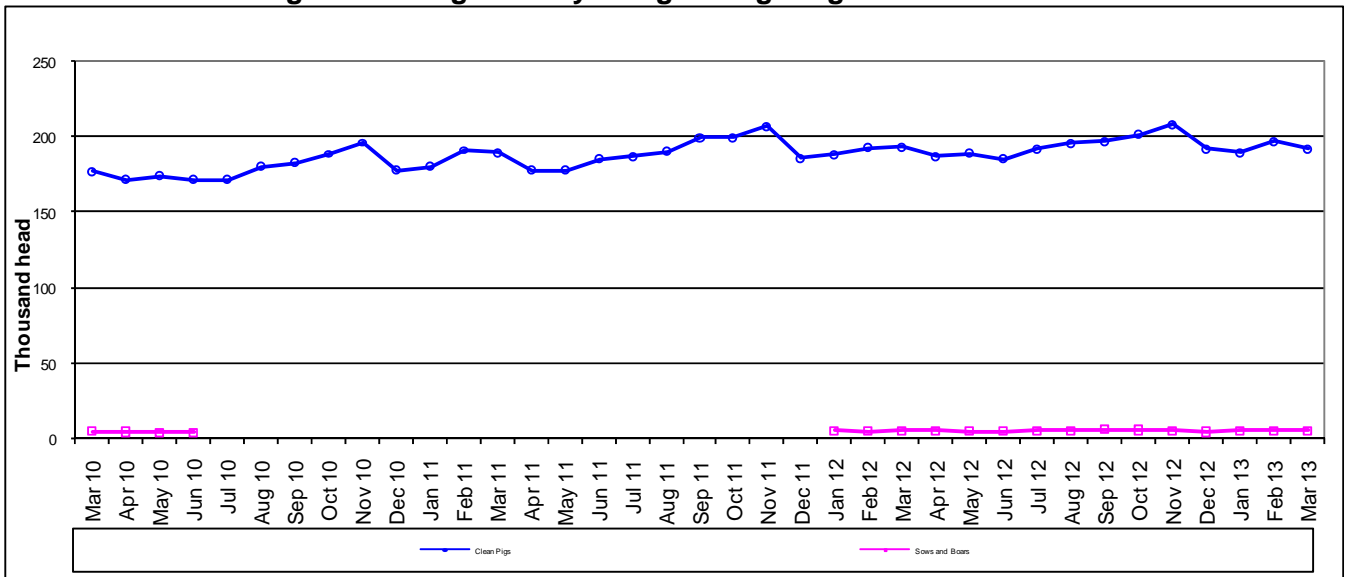


Chart 4:3 United Kingdom average weekly slaughtering - Pigs



Section 5: UK slaughterings by country

This table shows monthly estimates of the number of cattle, sheep and pigs slaughtered for meat in England and Wales, Scotland, Great Britain and Northern Ireland. Data are shown in statistical months, rather than calendar months. The totals for the countries may not add up to the Great Britain totals or the United Kingdom totals in section one, due to rounding.

Table 5: UK slaughterings by country

Thousand Head

	January 2013 5 weeks	February 2013 4 weeks	March 2013 4 weeks
England & Wales			
Steers	52	46	45
Heifers	41	36	34
Young Bulls	15	12	12
Cows and Adult Bulls	48	36	33
Calves	7	8	9
Other Sheep and Lambs	937	768	760
Ewes and Rams	182	154	143
Clean Pigs	762	634	622
Sows and Boars	25	20	20
Scotland			
Steers	20	18	17
Heifers	18	15	14
Young Bulls	2	1	2
Cows and Adult Bulls	6	5	4
Calves	0	0	0
Other Sheep and Lambs	134	110	121
Ewes and Rams	2	2	2
Clean Pigs	29	25	25
Sows and Boars	0	0	0
Great Britain			
Steers	72	64	62
Heifers	59	50	48
Young Bulls	17	14	14
Cows and Adult Bulls	54	41	37
Calves	7	9	9
Other Sheep and Lambs	1071	879	881
Ewes and Rams	185	156	145
Clean Pigs	792	660	648
Sows and Boars	25	20	21
Northern Ireland			
Steers	15	12	10
Heifers	13	10	9
Young Bulls	5	5	5
Cows and Adult Bulls	10	7	6
Calves	1	0	0
Other Sheep and Lambs	31	18	14
Ewes and Rams	4	3	3
Clean Pigs	155	127	120
Sows and Boars	0	0	0

Section 6: Methodology, Notes and Revisions Policy

1. The information in this notice is used by the UK government and the EU as evidence for assessing market conditions and evaluating agricultural policy. The slaughter statistics are also required by the EU under Regulation (EC) No 1165/2008. Other users include the food and farming industry, academia and the general public. Contact details are available on the front page of this notice, for you to send feedback or ask questions about the information provided.
2. Defra runs a monthly survey of registered England and Wales slaughterhouses. It is a statutory survey of 106 respondents that collects information on livestock slaughter numbers and weight of meat produced. All major slaughterhouses participate in the survey and the response rate is typically 100%. These data are supplemented by administrative data for smaller slaughterhouses. Similar surveys are run by RERAD in Scotland and by DARD in Northern Ireland. The England and Wales slaughter survey accounts for around 90% of the E&W slaughterhouse throughput for each livestock type.
3. Information on the weight of meat produced from a sample of animals weighed at slaughterhouses is obtained from survey respondents, around 55 slaughterhouse respondents. From the information provided average dressed carcass weights for each animal type are primarily calculated by adding up the total weight of the meat produced and dividing by the number of animals weighed. Cold dressed carcass weights are recorded.
4. The volume of meat production is estimated from the number of all livestock slaughtered and average dressed carcass weight information collected. Home killed production includes livestock imported into the United Kingdom for slaughter.
5. The data are subject to a variety of validation checks which identify inconsistencies in the data. All data are cleaned prior to publication in discussion with the survey respondents.

Revisions Policy

6. Figures in this notice are provisional and subject to revision. We will provide information about any revisions we make to previously published information in this statistics notice and the associated datasets. Revisions could occur for various reasons, including:
 - a. if we have not received survey data from respondents we make an estimate based on their previous returns. These estimates will be replaced with actual survey data when it is received.
 - b. survey respondents occasionally supply amended figures for previous periods.
 - c. if we have not received administrative data for the smaller slaughterhouses we make an estimate based on previous data received. These estimates will be replaced with actual data when it is received.
7. **This month revisions have been made to the data from February 2013 onwards.**