



Heritage Sub-Group Inaugural Meeting

22nd January 2013

Agenda

- Introductions
- Terms of reference
- Update on phase 1 (London and West Midlands)
- Risk-based approach to evaluation
- Route-wide evaluation
- Archive storage
- Next steps and actions



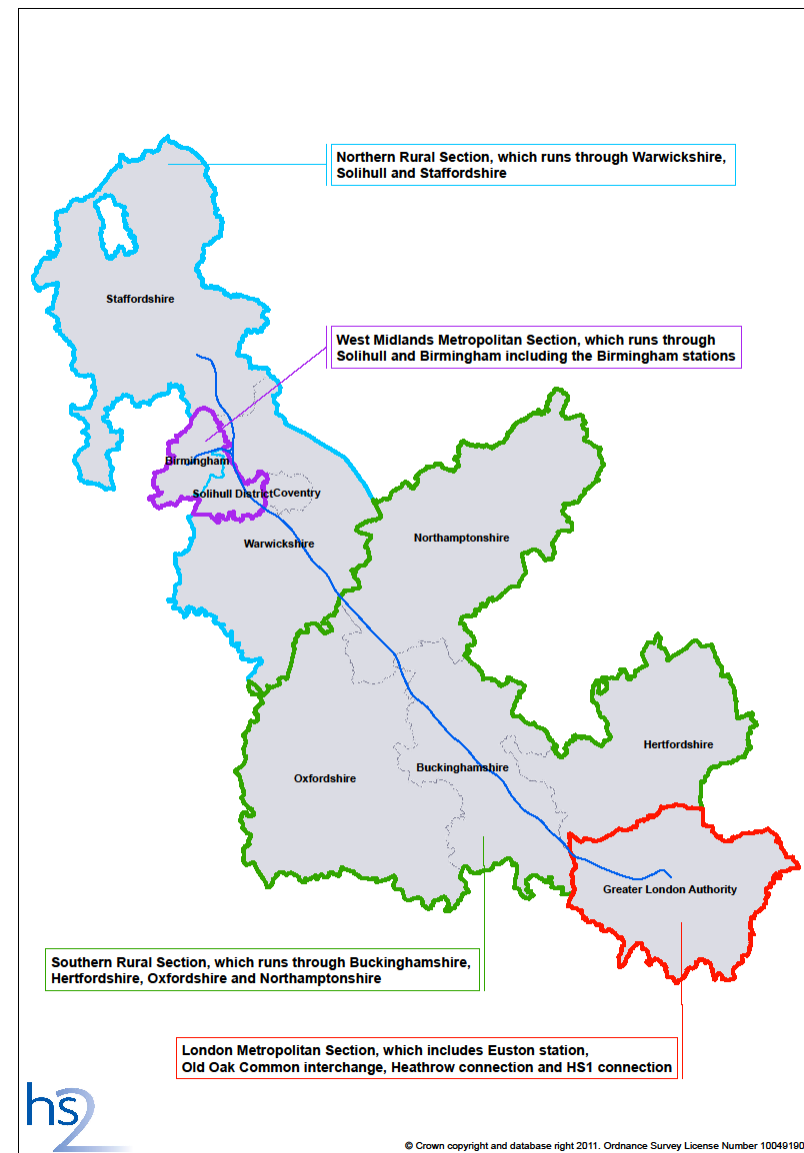
Introductions

- Helen J Glass: HS2 Ltd Archaeology and Heritage Advisor (route wide)
- Stephen Haynes: Arup/URS
 - Environmental overview consultant (phase 1, London and West Midlands)
 - Contract area West Midlands environmental impact assessment cultural heritage lead
- Round table introductions



Draft terms of reference

- Comments and feedback?
- Wording clarifications received





22nd January 2013

Heritage Sub-Group



Update on Phase 1

- Scope & methodology report
- Environmental impact assessment
- Engagement forums and bilaterals
- Draft code of construction practice
- Hybrid Bill



Environmental impact assessment

- Development of internal EIA technical notes
- Inputting into other project aspects: engineering design, other disciplines matters, programming
- Desk-based research
- Development of evaluation strategies
- Consultation
- Field evaluation
- Draft environmental statement during spring/summer 2013



Engagement, Forums and Bilaterals



- **Community forums:** engagement with local representatives about issues, mitigation and opportunities. Also an opportunity for HS2 to disseminate information.
- **Planning forums:** engagement between local authorities officers and Hs2 Ltd, providing opportunity to brief on the programme and for issues to be discussed.
- **National NGO forum:** information sharing, discussion on principles and practice, e.g. CPRE, National Trust, Heritage Alliance, RSPB.
- **National Environment Forum:** statutory agencies, e.g. EH, EA, NE, DECC, Defra.
- **Bilaterals:** archaeology and conservation officers, local authority officers, community groups, property and land owners

Draft code of construction practice (CoCP)

- Document relates to the route-wide principles governing construction
- Contains strategic control measures and the standards that will be implemented as a minimum throughout the project
- Local measures will be applied through a range of local underpinning plans





CoCP: cultural heritage

- Deals with designated and undesignated assets during construction
- In accordance with accepted industry practice
- A route wide **Generic** Written Scheme of Investigation
- **Site-specific** Written Scheme of Investigation
- Suitable 'measures' to be develop in consultation with EH and LAs





22nd January 2013

Heritage Sub-Group



Hybrid Bill



22nd January 2013

Heritage Sub-Group

Key steps

- Consultation on draft environmental statement
- Final environmental statement and hybrid Bill deposit
- Period of representations on the environmental statement
- Second reading: decision to proceed with HS2
- Select committee: opportunity for petitions to be heard by Parliament
- Royal assent



Main Bill document - content

The main Bill document will seek to:

- give the Secretary of State the **right to construct** and maintain the railway as described in the schedules to the Bill (and the accompanying plans and sections).
- give the Secretary of State powers of **compulsory acquisition** or temporary possession for the land required for the scheme (as set out in a schedule, plans and sections).
- provide deemed out-line **planning permission** for the railway.
- give the undertaker power to **stop up highways** that cross the line of route and **extinguish private rights of way** on land needed for the railway.
- address the way that **railways regulation** will apply to HS2. This will determine how HS2 is able to operate when constructed, how the franchising system may or may not apply and how HS2 would interact with the other players in the rail industry.
- address the way that **heritage issues** will be handled (e.g. where HS2 affects scheduled Monuments and Listed Buildings)



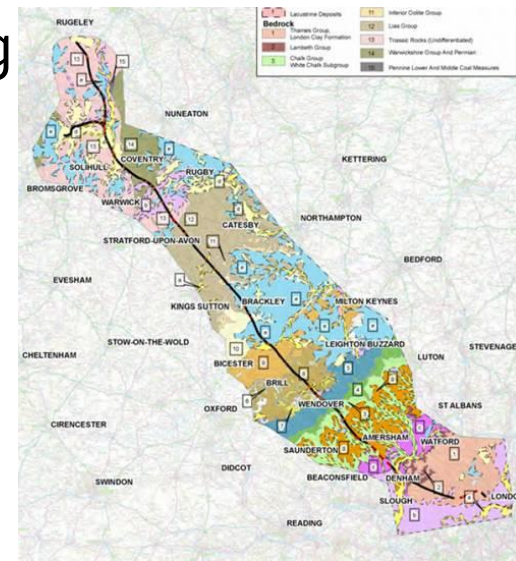
Key documents to be prepared

- **Book of Reference** details all the land required for the railway and identifies all those with an interest in the land (including the owners and lessees).
- **Environmental Statement** describes the railway, any significant environmental impacts and the steps taken to mitigate these.
- **Plans and sections** are visual representations of the land required for the railway as planned.
- **Planning and Heritage memorandum** sets out how planning and heritage issues will be handled.
- **Code of Construction Practice** sets out how construction will be carried out.
- **Register of commitments and undertakings** provides an official record of all commitments made in relation to the project which are not included in the Bill (i.e. promises that have been made, for which powers are not needed, that will be delivered in conjunction with the Bill).



Risk-Based Approach to Evaluation

- Directly a response to potential unavailability of land for field evaluation.
- EH and LA interpretation of character zones.
- Knowledge built on by EIAC during data collection and analysis for EIA, e.g. HERs, cartographic, LiDAR.
- Define archaeological character zones, using e.g. geology, topography, level of past archaeological work, known patterns of discoveries.

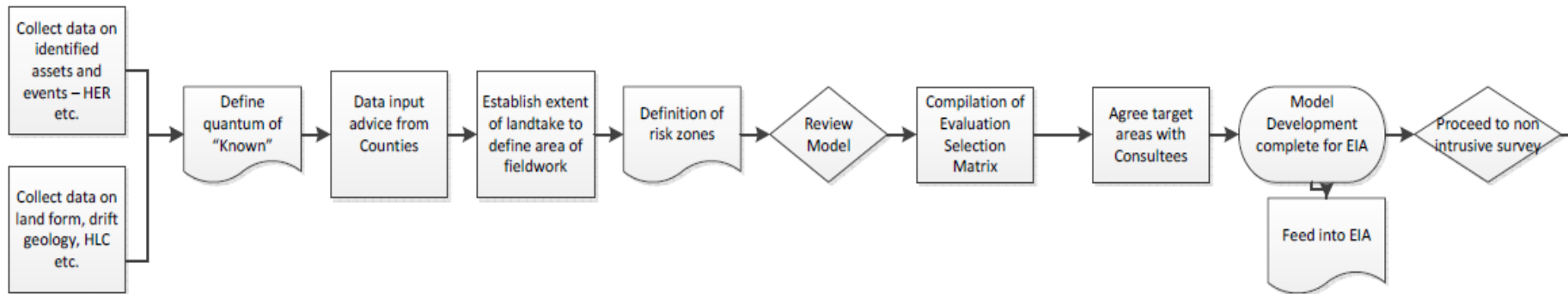


Risk-Based Approach to Evaluation

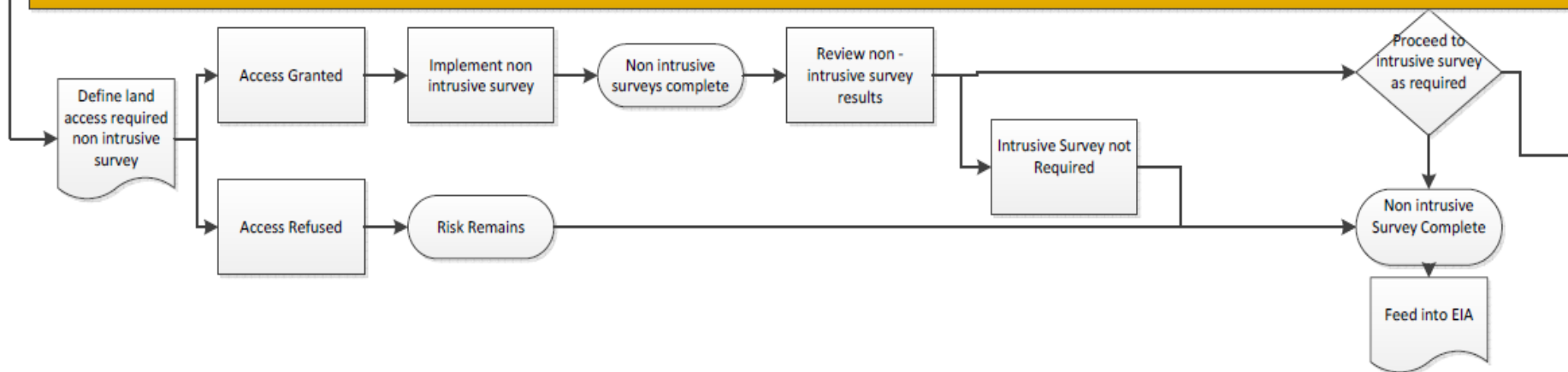
- Assess level of archaeological risk for each zone – can a robust commentary be provided?
- Devise field evaluation strategies on the basis of the risk posed by each zone.
- Consultation with EH and LAs.



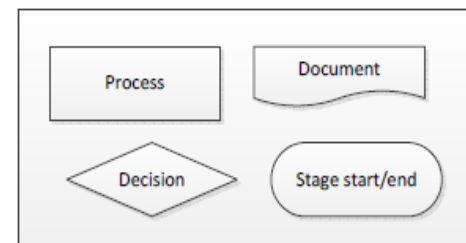
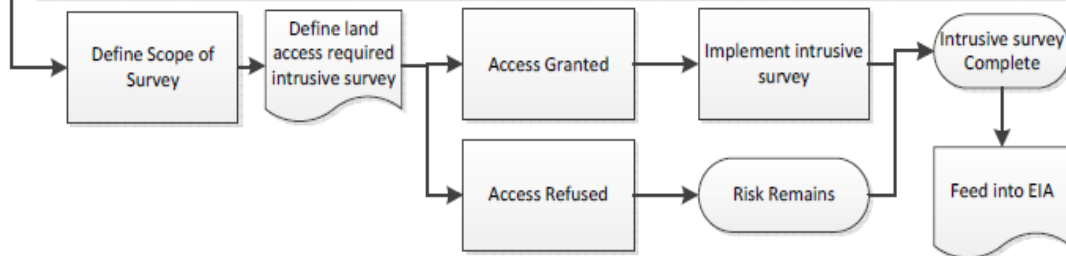
Development of Model



Non Invasive Survey



Intrusive Survey





Evaluation

- Consultation
- Non-intrusive
- Consultation
- Intrusive





Storing the physical archive



- Capacity along the route.



Next steps and actions

