

Independent Driving - Three Month Review March 2011



Driving Standards Agency
The Axis Building
112 Upper Parliament Street
Nottingham
NG1 6LP
Telephone 0115 936 6164
Website <http://www.dft.gov.uk/dsa/category.asp?cat=670>

© Queen's Printer and Controller of HMSO, 2011

Copyright in the typographical arrangement rests with the Crown.

This publication, excluding logos, may be reproduced free of charge in any format or medium for non-commercial research, private study, or for internal circulation within an organisation. This is subject to it being reproduced accurately and not used in a misleading context. The material must be acknowledged as Crown copyright and you must give the title of the source document/publication. Where we have identified any third party copyright material you will need to obtain permission from the copyright holders concerned.

This is a value-added publication that falls outside the scope of the Open Government Licence.

1 Introduction

- 1.1 On 4 October 2010 the Driving Standards Agency (DSA) introduced a new element to the practical driving test. This meant that for part of the test candidates would be asked to follow road signs towards a particular destination, a list of verbal directions or a combination of both, without the usual prompts from the driving examiner. This is known as independent driving.
- 1.2 DSA is committed to evaluating the impact introducing this new element has had on test performance. As part of this process the Agency's Research Unit has completed a three month review of test pass rates.
- 1.3 This report presents pass rate data for car tests, motorcycle tests, large goods vehicle (LGV) and passenger carrying vehicle (PCV) tests. It also makes comparisons based on gender, test attempt and whether an interpreter was present or a test was delivered for candidates who had notified DSA of a special need¹.

2 Findings

- 2.1 For the purposes of this report, pass rate data was retrieved from DSA's Road Safety Information System (RSIS) database on 27 January 2011, to ensure that data for all tests conducted between October and December 2010 will have been included. The data sets are presented in the tables in Annex A.
- 2.2 Given the volume of data available, the category B results have been broken down to represent various timeframes and driver type. Figures 1 to 3 present data for the period December 2009 to December 2010. Figures 4 and 5 provide a comparison between pass rates for October-December 2009 and October-December 2010, to give a more detailed view of changes since the introduction of independent driving with the equivalent period in the preceding year.
- 2.3 When applying for their practical test candidates can declare if they have a special need or to have an interpreter present if English is not their first language. These are not compulsory declarations, so the samples considered here may under represent the overall populations of candidates with special needs or who do not have English as their first language.

¹ When booking their practical driving test candidates are asked if they have any special needs (learning or physical impairment) which may affect their performance on test which can include; any condition that affects movement, any special learning needs, epilepsy, deafness - either profound or not and, if the candidate is heavily pregnant. (List not exhaustive)

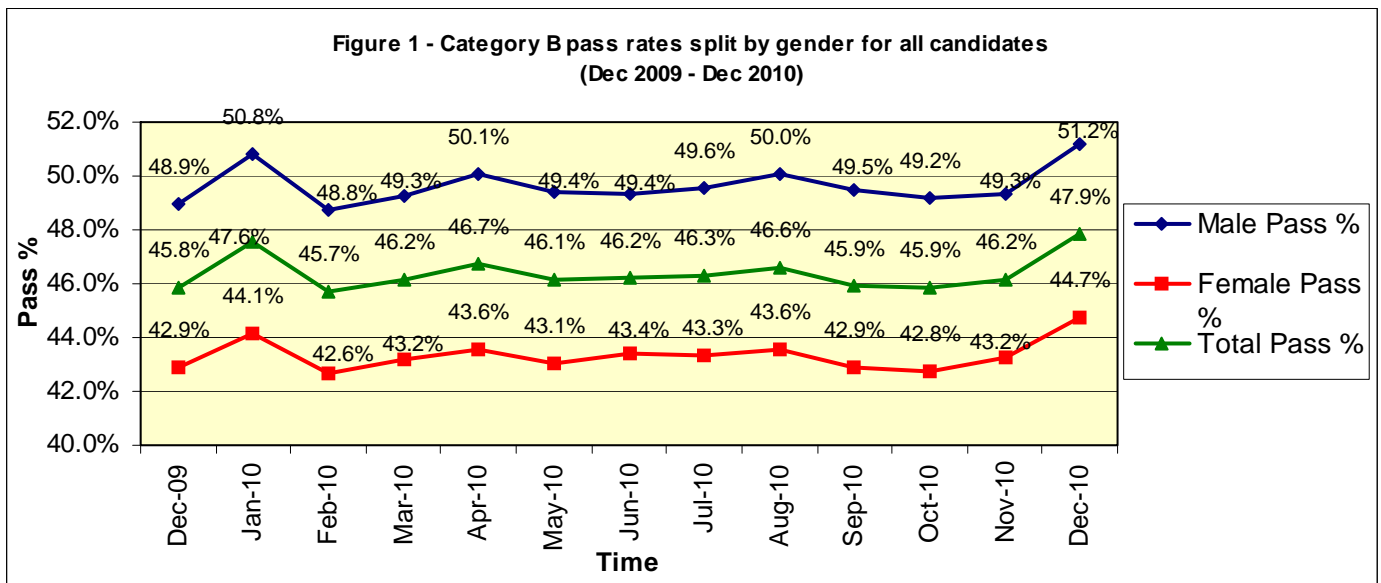
2.4 It should be noted that for these subgroups identified, volumes of tests are low. This explains the variability in some of the pass rates shown in some of the figures in this report. For example, the fictional data used below describes how a change of just 30 to the number of people passing in each gender could produce very different changes in the final pass rate (per cent) recorded depending on the overall number who present for test.

Month	Male	Male pass	Pass per cent	Female	Female Pass	Pass per cent
Jan	4000	2000	50	300	150	50
Feb	4000	1970	49.25	300	120	40

Fictional data used as an example.

3 Car test data

3.1 The overall data (figure 1) shows that the car test pass rate has been stable over the period December 09 to December 10. A total of 1,614,306 tests were delivered during that time (see table 1). The average pass rate for these 12 months is 46.3 per cent. The standard deviation² for this group is 0.6 per cent, confirming this stability.



² The standard deviation is a statistic that tells you how tightly all the various test scores are clustered around the mean in a set of data. When the scores are tightly bunched together and the bell-shaped curve is steep, the standard deviation is small. When the examples are spread apart and the bell curve is relatively flat, it suggests a relatively large standard deviation.

One standard deviation away from the mean in either direction accounts for somewhere around 68 percent of the people in the sample. Two standard deviations away from the mean account for roughly 95 percent of the people. And three standard deviations account for about 99 percent of the people.

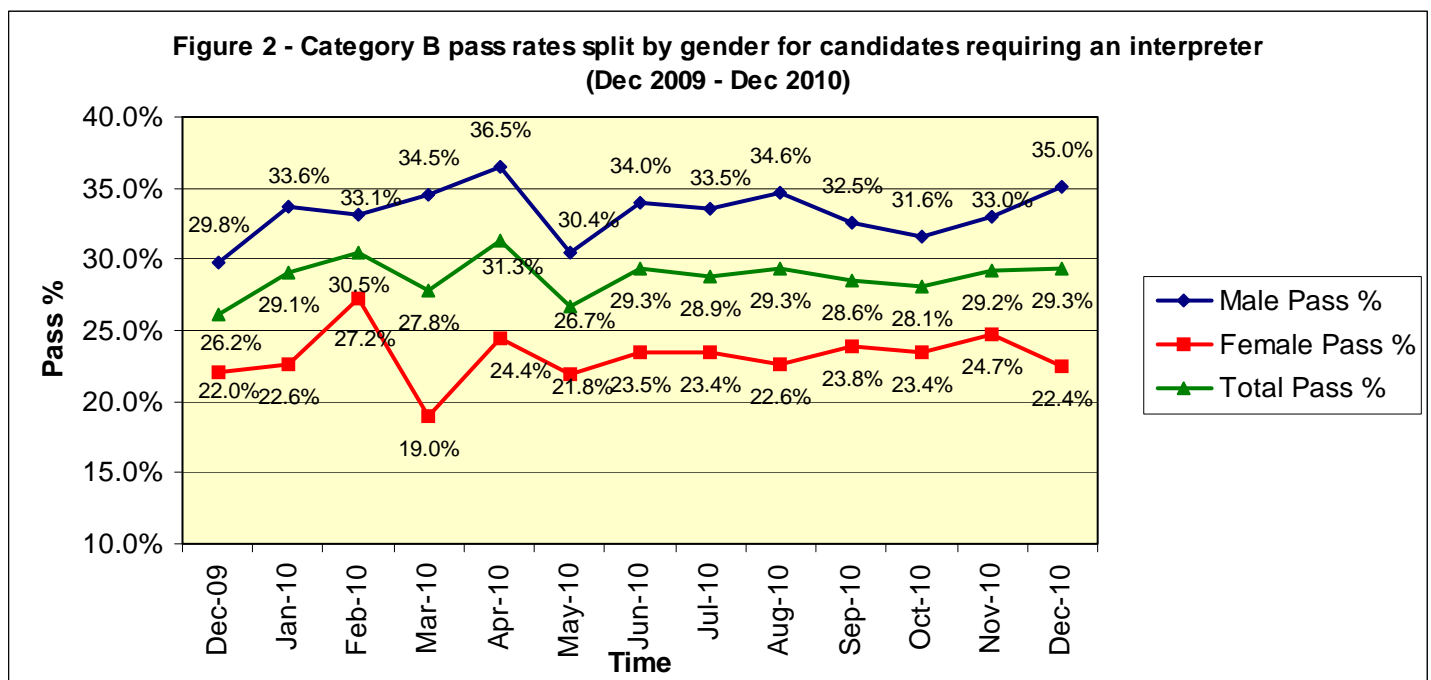
If this curve were flatter and more spread out, the standard deviation would have to be larger in order to account for those 68 percent or so of the people. So that's why the standard deviation can tell you how spread out the examples in a set are from the mean.

3.2 Furthermore, focussing on the period 4 October 2010 (when independent driving was introduced) and 31 December 2010, the pass rate has remained stable and within the bounds of normal variance.

3.3 It should be noted that there is a difference in pass rates between males and females. Males generally have a higher pass rate. The largest difference between the two genders is roughly 10 per cent for candidates presenting with an interpreter (see below).

Car tests with an interpreter present

3.4 Between December 2009 and December 2010 there were 23,972 tests delivered with an interpreter present. The overall pass rate for this group was 28.8 per cent (see figure 2).



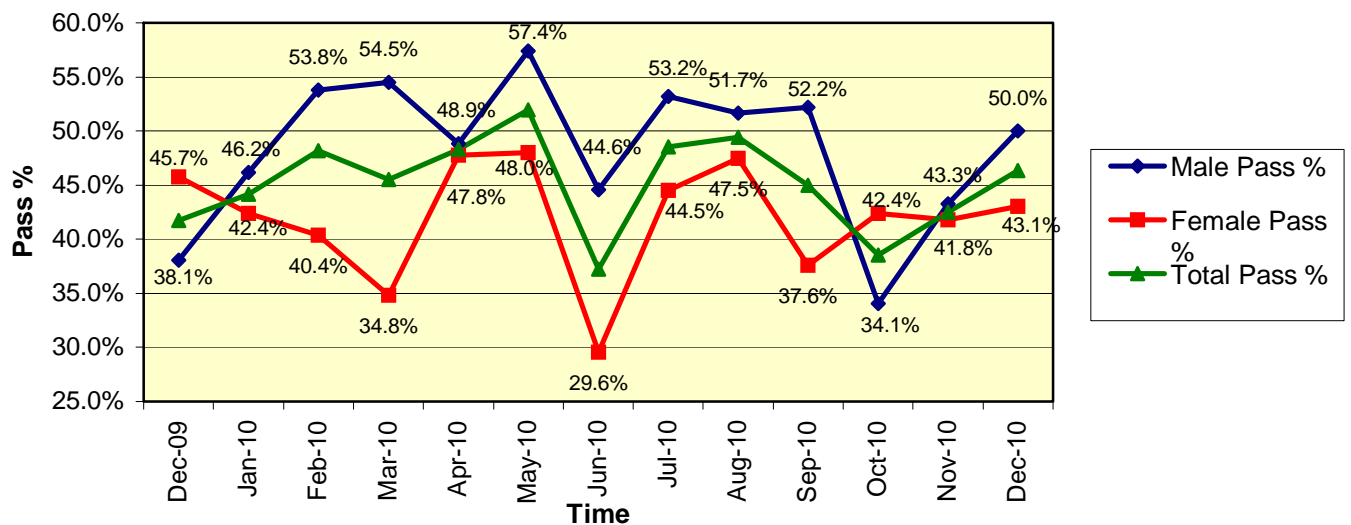
3.5 Between September 2010 and October 2010 the pass rate for this group dropped by 0.5 per cent. Given a standard deviation of 1.3 per cent for the whole 12 months analysed here this pass rate fluctuation is within the bounds of natural variation rather than indicating any significant impact of the new test element. After October 2010, the overall pass rate rose back above 29 per cent.

3.6 As noted above, there are differences in the pass rates for male and female candidates. Females presenting for test with an interpreter had an average pass rate of 23.3 per cent over the period shown; this compares with an average 33.2 per cent for males.

Car tests for candidates who declare a special need

3.7 The special need group has an average pass rate of 45.1 per cent, which is only 1.2 per cent lower than the overall average (figure 3). The standard deviation for the test pass rate for this group is higher than the overall group (4.1 per cent and 0.6 per cent respectively). This is a function of the much lower numbers in this group (3,182 tests delivered in 12 months). In the three month since the introduction of independent driving the average pass rate was 41.6per cent which is within one standard deviation and therefore within normal pass rate variance.

Figure 3 - Category B pass rates split by gender for special need candidates requiring an adjusted test. (Dec 2009 - Dec 2010)



3.8 A comparison of pass rate data for the practical car test for October to December 2009 and October to December 2010 has been included here to identify whether the introduction of independent driving to the test (on 4 October 2010) had any impact on candidates' performance.

3.9 As can be seen in figures 4 and 5 below:

- the overall pass rate varied only slightly within and between the two periods.
- there was a slight reduction (less than 2 percentage points) in the pass rate for those candidates who presented with an interpreter between October and December 2009. But in the same period in 2010, the trend was in the opposite direction.
- there was a difference of 7.35 per cent in pass rate for the special need group between October 2010 and December 2010. The pass rate for this group was higher in December 2010 than the overall pass rate.

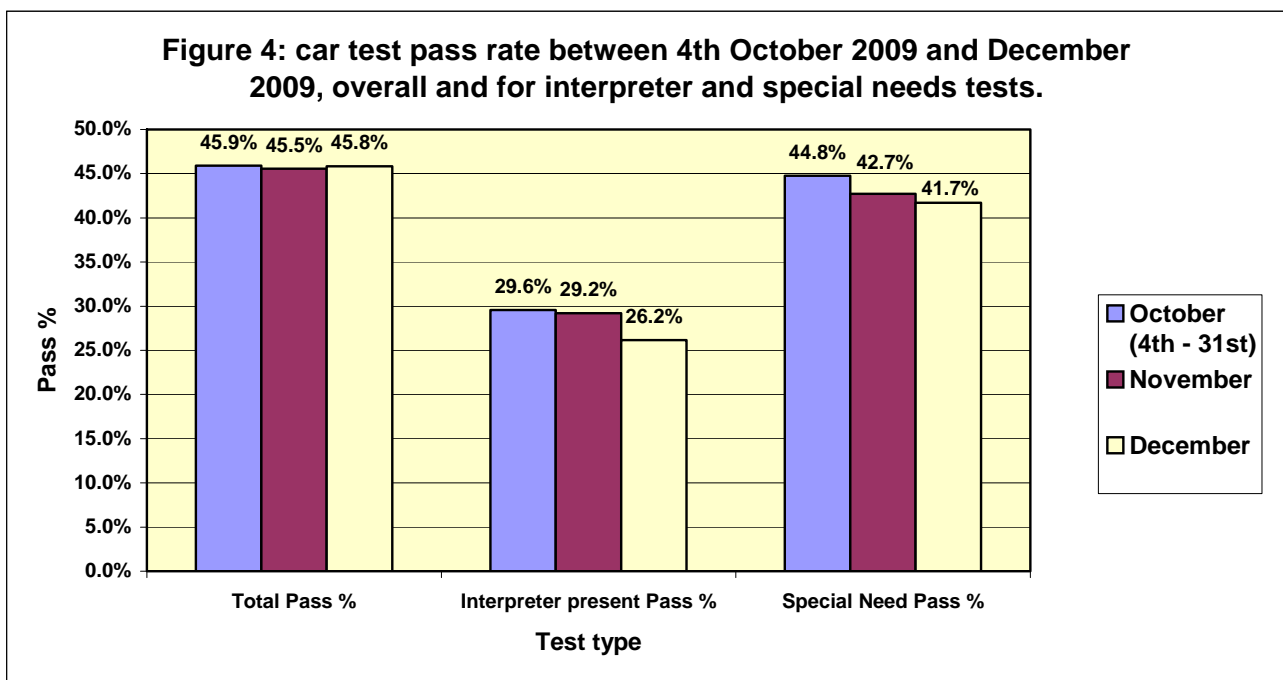
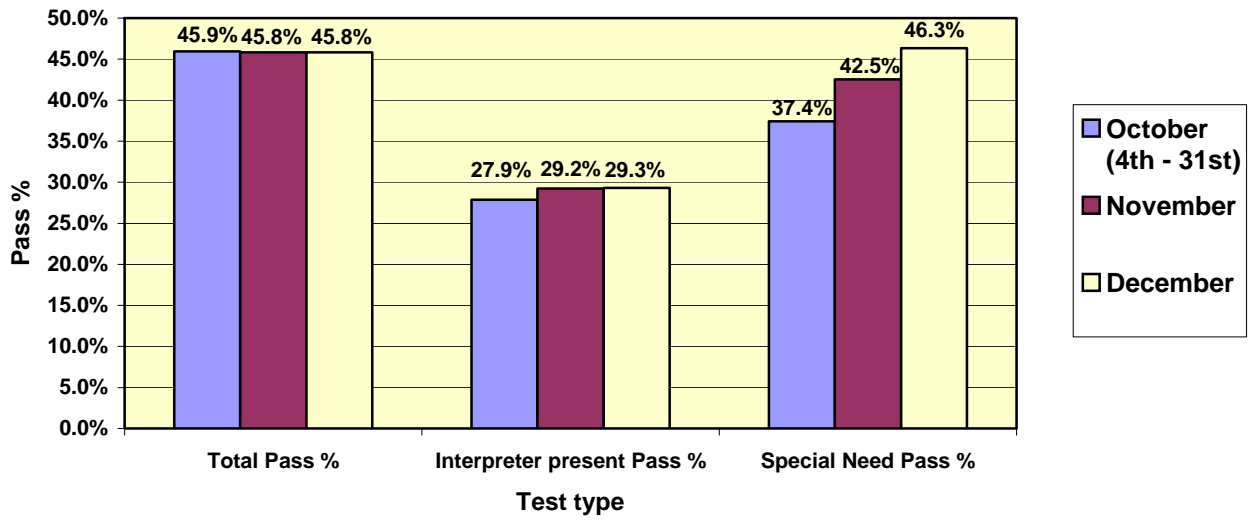
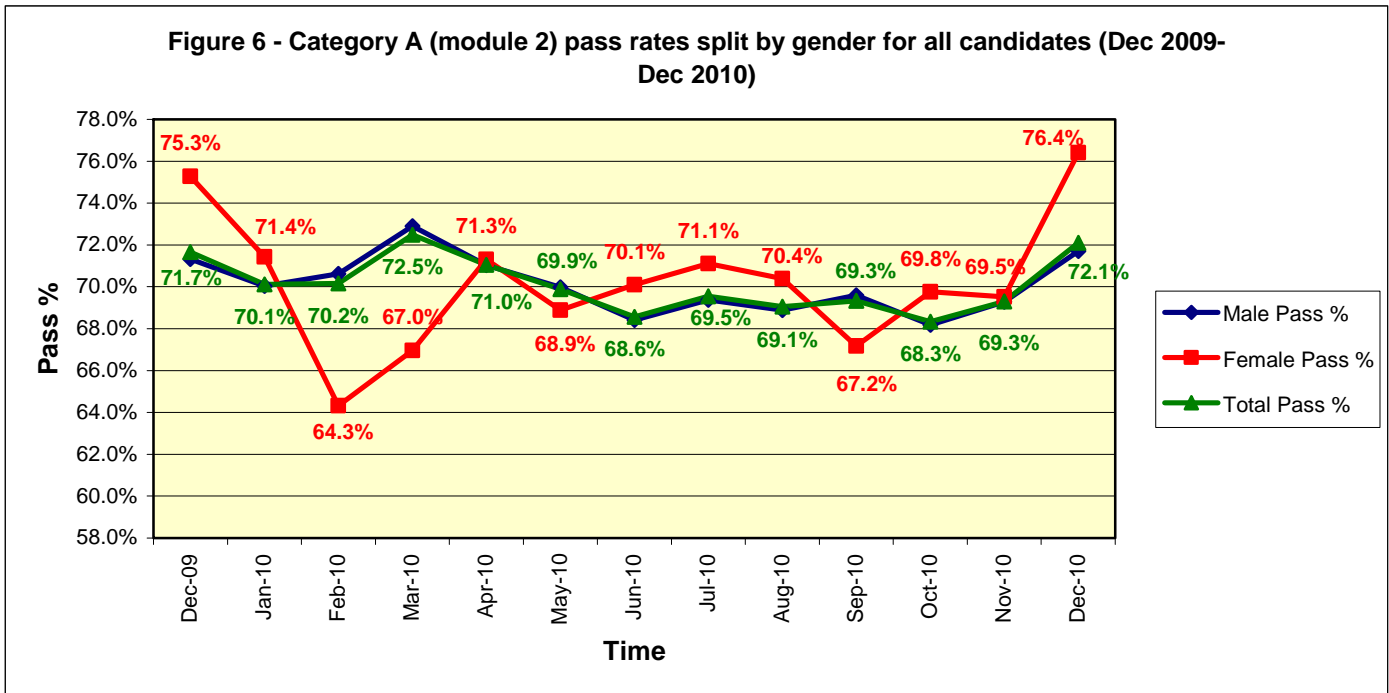


Figure 5: car test pass rate between 4th October 2010 and December 2010, overall and for interpreter and special needs tests



4 Motorcycle module 2 practical tests

- 4.1 Figure 6 displays the pass rates for the motorcycle, module two test. Overall, 49,293 took the test in the period observed, the gender split is very uneven with males accounting for 44,700 of the tests and females only making up 5,593 (see tables 6 and 7).



- 4.2 If the data are considered in terms of their standard deviations within the group it helps to highlight actual trends (raw figures described in table 6). The standard deviation for the male group is lower than the females, 1.3 per cent and 3.1 per cent respectively. This suggests that the male group has a more consistent pass rate than the female; however the female group still has a relatively low deviation given the apparent fluctuations that can be seen in the graph. Furthermore the female group has a slightly higher mean pass rate than the males.

5 Lorry and bus practical tests

- 5.1 Lorry and bus test candidates are, de facto, experienced drivers. DSA did not expect, therefore, that the introduction of independent driving would have had a significant impact on their test performance.
- 5.2 Looking at the pass rates for the LGV and PCV tests (see figures 7 and 8 respectively) there seems to be similar patterns to the motorcycle test. Generally speaking the females have higher pass rates than the males. The males' pass rates, however, are much steadier with lower standard deviations. For the PCV test the males

have a deviation of 1.4 per cent and the females 5.5 per cent. This would suggest that gender seems to have an effect on pass rates, but again, the numbers in the female group is low so only slight changes in the number passing creates a much higher variance in pass rates.

Figure 7 - Category C pass rates split by gender for all candidates (Dec 2009 - Dec 2010)

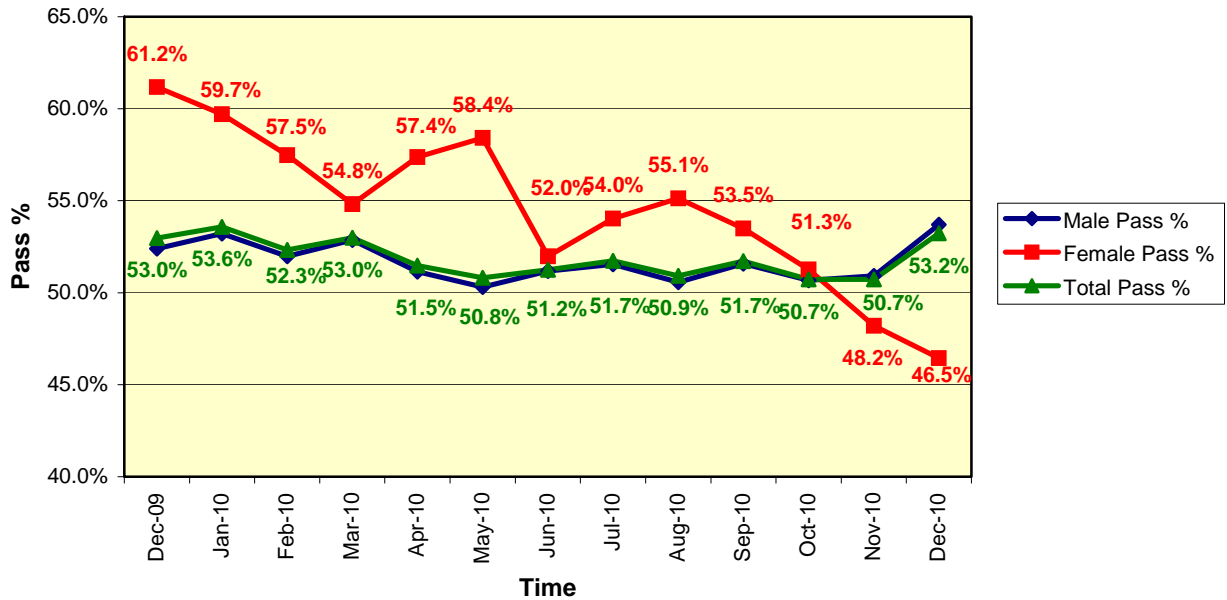
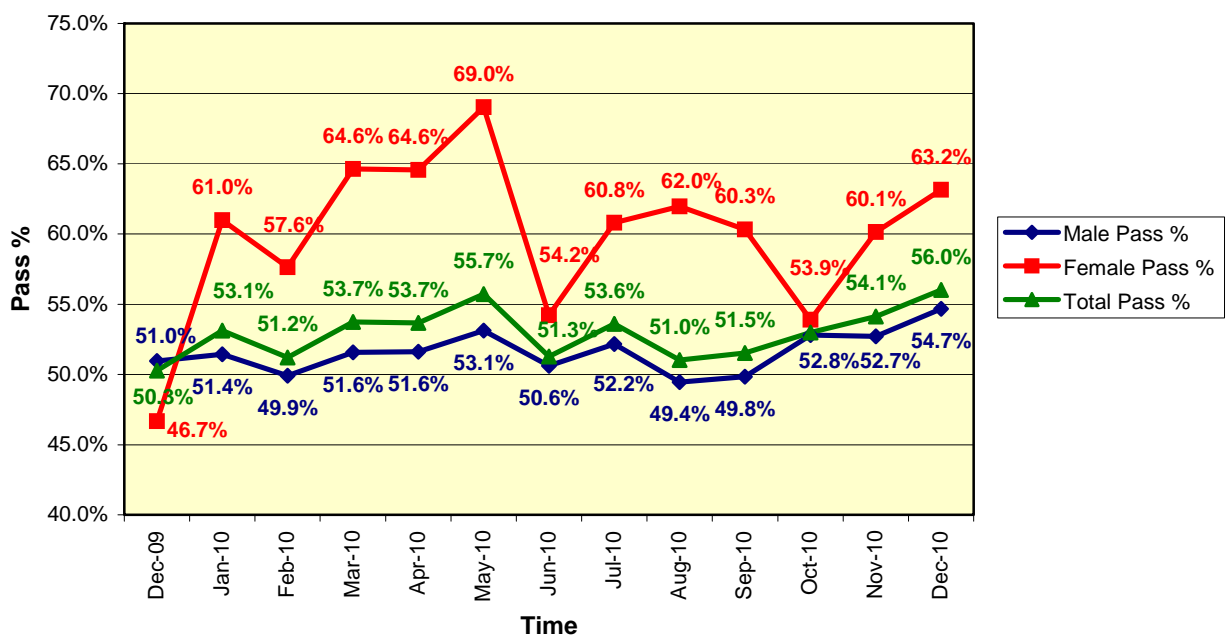


Figure 8 - Category D pass rates split by gender for all candidates (Dec 2009 - Dec 2010)



- 5.3 Looking specifically at the changes since October 2010 for categories A, C and D there seems to have been little change in the pass rates since the introduction of independent driving, the only exception to this being the females completing the PCV test whose pass rate dipped from September to October (60.3 per cent and 53.9 per cent respectively). This change in real terms, however, only represents four fewer women passing the test from one month to the next, furthermore pass rates have returned to average (based on the mean for previous months) levels in November and December 2010.
- 5.4 There are very few candidates who present for vocational tests with either an interpreter or with a declared special need. The numbers of tests for such candidates are given in the data tables below (see tables 9, 10, 12 and 13) but have not been presented graphically.

6 Conclusion

- 6.1 Following the October introduction of independent driving for all test categories there seems to have been very little change. This suggests independent driving has been incorporated into the testing regimes for categories A, B, C and D without any significant or detrimental impact on pass rates.
- 6.2 This report has taken a first step into the evaluation programme for the introduction of independent driving. DSA will continue to monitor pass rate data and undertake further qualitative work to understand what impact that changes to the practical test have had on pre-test training and post-test driving experiences.

Appendix A

Note: In all data tables below, a column heading referring to 'SD' represents Standard Deviation.

Table 1: Pass rates for category B (car) tests December 2009 – December 2010, overall and by gender

Produced on 27/01/2011

Category: Car												
Overall	Male Cond	Male Pass	Male Pass %	Male SD	Female Cond	Female Pass	Female Pass %	Female SD	Total Tests	Total Passes	Total Pass %	Total SD
December 2009	49134	24041	48.9%		51543	22092	42.9%		100677	46133	45.8%	
January 2010	41768	21225	50.8%		38940	17181	44.1%		80712	38408	47.6%	
February 2010	62936	30697	48.8%		63939	27259	42.6%		126878	57957	45.7%	
March 2010	69401	34184	49.3%		71805	30987	43.2%		141207	65172	46.2%	
April 2010	62878	31502	50.1%		66886	29140	43.6%		129764	60642	46.7%	
May 2010	63408	31313	49.4%		67181	28931	43.1%		130591	60244	46.1%	
June 2010	67817	33469	49.4%		73741	31995	43.4%		141559	65464	46.2%	
July 2010	67955	33695	49.6%		74444	32242	43.3%		142400	65937	46.3%	
August 2010	60109	30082	50.0%		67351	29346	43.6%		127460	59428	46.6%	
September 2010	65787	32537	49.5%		77013	33009	42.9%		142800	65546	45.9%	
October 2010	69923	34369	49.2%		73891	31607	42.8%		143814	65976	45.9%	
November 2010	70537	34797	49.3%		75278	32538	43.2%		145817	67336	46.2%	
December 2010	29462	15086	51.2%		31165	13940	44.7%		60627	29026	47.9%	
NATIONAL FIGURES	781115	386997	49.5%	0.7%	833177	360267	43.2%	0.6%	1614306	747269	46.3%	0.6%

Table 2: Pass rates for category B (car) tests for candidates presenting with an interpreter between December 2009-December 2010, overall and by gender

Produced on 27/01/2011

Category: Car												
Interpreter	Male Cond	Male Pass	Male Pass %	Male SD	Female Cond	Female Pass	Female Pass %	Female SD	Total Tests	Total Passes	Total Pass %	Total SD
December 2009	513	153	29.8%		454	100	22.0%		967	253	26.2%	
January 2010	562	189	33.6%		389	88	22.6%		951	277	29.1%	
February 2010	815	270	33.1%		654	178	27.2%		1469	448	30.5%	
March 2010	954	329	34.5%		736	140	19.0%		1690	469	27.8%	
April 2010	929	339	36.5%		701	171	24.4%		1630	510	31.3%	
May 2010	1071	326	30.4%		833	182	21.8%		1904	508	26.7%	
June 2010	1147	390	34.0%		931	219	23.5%		2078	609	29.3%	
July 2010	1149	385	33.5%		979	229	23.4%		2128	614	28.9%	
August 2010	1065	369	34.6%		848	192	22.6%		1913	561	29.3%	
September 2010	1229	400	32.5%		1040	248	23.8%		2269	648	28.6%	
October 2010	1682	532	31.6%		1278	299	23.4%		2960	831	28.1%	
November 2010	1548	511	33.0%		1285	317	24.7%		2833	828	29.2%	
December 2010	645	226	35.0%		535	120	22.4%		1180	346	29.3%	
NATIONAL FIGURES	13309	4419	33.2%	1.8%	10663	2483	23.3%	1.8%	23972	6902	28.8%	1.3%

Table 3: Pass rates for category B (car) tests for candidates declaring a special need between December 2009-December 2010, overall and by gender

Produced on 27/01/2011

Category: Car												
Special need	Male Cond	Male Pass	Male Pass %	Male SD	Female Cond	Female Pass	Female Pass %	Female SD	Total Tests	Total Passes	Total Pass %	Total SD
December 2009	105	40	38.1%		94	43	45.7%		199	83	41.7%	
January 2010	78	36	46.2%		85	36	42.4%		163	72	44.2%	
February 2010	145	78	53.8%		104	42	40.4%		249	120	48.2%	
March 2010	134	73	54.5%		112	39	34.8%		246	112	45.5%	
April 2010	131	64	48.9%		134	64	47.8%		265	128	48.3%	
May 2010	108	62	57.4%		150	72	48.0%		258	134	51.9%	
June 2010	148	66	44.6%		142	42	29.6%		290	108	37.2%	
July 2010	126	67	53.2%		146	65	44.5%		272	132	48.5%	
August 2010	120	62	51.7%		139	66	47.5%		259	128	49.4%	
September 2010	136	71	52.2%		133	50	37.6%		269	121	45.0%	
October 2010	138	47	34.1%		158	67	42.4%		296	114	38.5%	
November 2010	134	58	43.3%		146	61	41.8%		280	119	42.5%	
December 2010	64	32	50.0%		72	31	43.1%		136	63	46.3%	
NATIONAL FIGURES	1567	756	48.2%	6.5%	1615	678	42.0%	5.2%	3182	1434	45.1%	4.1%

Table 4: Category B test pass rates for October to December 2009 for candidates presenting with an interpreter or declaring a special need

2009	Total Tests	Total Passes	Total Pass %	Interpreter Present	Interpreter Passes	Interpreter present Pass %	Special Needs	Special Needs passes	Special Need Pass %
October (4th - 31st)	129189	59296	45.9%	1444	427	29.6%	210	94	44.8%
November	144921	66006	45.5%	1582	462	29.2%	248	106	42.7%
December	100677	46133	45.8%	967	253	26.2%	199	83	41.7%
Total	374787	171435	45.8%	3993	1142	28.3%	657	283	43.1%

Table 5 Category B test pass rates for October to December 2010 for candidates presenting with an interpreter or declaring a special need

2010	Total Tests	Total Passes	Total Pass %	Interpreter Present	Interpreter Passes	Interpreter present Pass %	Special Needs	Special Needs passes	Special Need Pass %
October (4th - 31st)	135976	62465	45.9%	2792	778	27.9%	286	107	37.4%
November	100677	46133	45.8%	2833	828	29.2%	280	119	42.5%
December	100677	46133	45.8%	1180	346	29.3%	136	63	46.3%
Total	337330	154731	45.9%	6805	1952	28.8%	702	289	42.1%

Category A (module two) – raw data

Table 6: Pass rates for category A (motorcycle module 2) tests, December 2009-December 2010, overall and by gender

Produced on 27/01/2011												
Category: Bike Mod 2												
Overall	Male Cond	Male Pass	Male Pass %	Male SD	Female Cond	Female Pass	Female Pass %	Female SD	Total Tests	Total Passes	Total Pass %	Total SD
December 2009	1970	1405	71.3%		186	140	75.3%		2156	1545	71.7%	
January 2010	1001	701	70.0%		63	45	71.4%		1064	746	70.1%	
February 2010	1991	1406	70.6%		157	101	64.3%		2148	1507	70.2%	
March 2010	2960	2158	72.9%		224	150	67.0%		3184	2308	72.5%	
April 2010	3945	2802	71.0%		345	246	71.3%		4290	3048	71.0%	
May 2010	4196	2936	70.0%		389	268	68.9%		4585	3204	69.9%	
June 2010	5212	3566	68.4%		525	368	70.1%		5737	3934	68.6%	
July 2010	4816	3341	69.4%		540	384	71.1%		5356	3725	69.5%	
August 2010	4529	3120	68.9%		591	416	70.4%		5120	3536	69.1%	
September 2010	4893	3405	69.6%		591	397	67.2%		5484	3802	69.3%	
October 2010	4526	3086	68.2%		496	346	69.8%		5022	3432	68.3%	
November 2010	3721	2578	69.3%		397	276	69.5%		4118	2854	69.3%	
December 2010	940	674	71.7%		89	68	76.4%		1029	742	72.1%	
NATIONAL FIGURES	44700	31178	69.7%	1.3%	4593	3205	69.8%	3.1%	49293	34383	69.8%	1.3%

Table 7: Pass rates for category A (motorcycle) tests for candidates presenting with an interpreter between February 2010-December 2010, overall and by gender

Produced on 27/01/2011												
Category: Bike Mod 2												
Interpreter	Male Cond	Male Pass	Male Pass %	Male SD	Female Cond	Female Pass	Female Pass %	Female SD	Total Tests	Total Passes	Total Pass %	Total SD
February 2010	3	2	66.7%		0	0	0.0%		3	2	66.7%	
March 2010	5	1	20.0%		0	0	0.0%		5	1	20.0%	
April 2010	2	1	50.0%		0	0	0.0%		2	1	50.0%	
May 2010	1	1	100.0%		0	0	0.0%		1	1	100.0%	
June 2010	3	2	66.7%		0	0	0.0%		3	2	66.7%	
July 2010	1	0	0.0%		0	0	0.0%		1	0	0.0%	
August 2010	1	0	0.0%		0	0	0.0%		1	0	0.0%	
October 2010	4	4	100.0%		0	0	0.0%		4	4	100.0%	
November 2010	2	2	100.0%		0	0	0.0%		2	2	100.0%	
December 2010	1	1	100.0%		0	0	0.0%		1	1	100.0%	
NATIONAL FIGURES	23	14	60.9%	39.2%	0	0	0.0%	0.0%	23	14	60.9%	39.2%

Category C (LGV) – Raw data

Table 8: Pass rates for category C (LGV) tests, December 2009-December 2010, overall and by gender

Produced on 27/01/2011												
Category: LGV												
	Male Cond	Male Pass	Male Pass %	Male SD	Female Cond	Female Pass	Female Pass %	Female SD	Total Tests	Total Passes	Total Pass %	Total SD
December 2009	2435	1276	52.4%		170	104	61.2%		2605	1380	53.0%	
January 2010	2120	1128	53.2%		129	77	59.7%		2249	1205	53.6%	
February 2010	3149	1637	52.0%		214	123	57.5%		3363	1760	52.3%	
March 2010	3524	1863	52.9%		239	131	54.8%		3763	1994	53.0%	
April 2010	3379	1728	51.1%		197	113	57.4%		3576	1841	51.5%	
May 2010	3301	1661	50.3%		214	125	58.4%		3515	1786	50.8%	
June 2010	3374	1727	51.2%		279	145	52.0%		3653	1872	51.2%	
July 2010	3558	1834	51.5%		298	161	54.0%		3856	1995	51.7%	
August 2010	3285	1661	50.6%		283	156	55.1%		3568	1817	50.9%	
September 2010	3383	1745	51.6%		243	130	53.5%		3626	1875	51.7%	
October 2010	3828	1940	50.7%		275	141	51.3%		4103	2081	50.7%	
November 2010	3714	1891	50.9%		278	134	48.2%		3992	2025	50.7%	
December 2010	1780	956	53.7%		127	59	46.5%		1907	1015	53.2%	
NATIONAL FIGURES	40830	21047	51.5%	1.0%	2946	1599	54.3%	4.2%	43776	22646	51.7%	1.0%

Table 9: Pass rates for category C (LGV) tests for candidates presenting with an interpreter between December 2010-December 2010, overall and by gender

Produced on 27/01/2011												
Category: LGV												
Interpreter	Male Cond	Male Pass	Male Pass %	Male SD	Female Cond	Female Pass	Female Pass %	Female SD	Total Tests	Total Passes	Total Pass %	Total SD
December 2009	1	0	0.0%		0	0	0.0%		1	0	0.0%	
January 2010	2	1	50.0%		0	0	0.0%		2	1	50.0%	
February 2010	3	0	0.0%		0	0	0.0%		3	0	0.0%	
March 2010	4	3	75.0%		2	1	50.0%		6	4	66.7%	
April 2010	4	0	0.0%		0	0	0.0%		4	0	0.0%	
May 2010	4	3	75.0%		0	0	0.0%		4	3	75.0%	
June 2010	6	0	0.0%		0	0	0.0%		6	0	0.0%	
July 2010	4	2	50.0%		0	0	0.0%		4	2	50.0%	
August 2010	2	0	0.0%		1	0	0.0%		3	0	0.0%	
September 2010	3	2	66.7%		0	0	0.0%		3	2	66.7%	
October 2010	5	3	60.0%		0	0	0.0%		5	3	60.0%	
November 2010	2	1	50.0%		0	0	0.0%		2	1	50.0%	
NATIONAL FIGURES	40	15	37.5%	31.1%	3	1	33.3%	13.8%	43	16	37.2%	30.3%

Table 10: Pass rates for category C (LGV) tests for candidates declaring a special need between December 2009-December 2010, overall and by gender

Produced on 27/01/2011												
Category: LGV												
Special need	Male Cond	Male Pass	Male Pass %	Male SD	Female Cond	Female Pass	Female Pass %	Female SD	Total Tests	Total Passes	Total Pass %	Total SD
December 2009	3	1	33.3%		0	0	0.0%		3	1	33.3%	
February 2010	1	0	0.0%		0	0	0.0%		1	0	0.0%	
June 2010	2	2	100.0%		0	0	0.0%		2	2	100.0%	
July 2010	1	1	100.0%		0	0	0.0%		1	1	100.0%	
August 2010	4	1	25.0%		0	0	0.0%		4	1	25.0%	
September 2010	2	1	50.0%		0	0	0.0%		2	1	50.0%	
November 2010	3	2	66.7%		0	0	0.0%		3	2	66.7%	
NATIONAL FIGURES	16	8	50.0%	35.0%	0	0	0.0%	0.0%	16	8	50.0%	35.0%

Category D (PCV) – Raw data

Table 11: Pass rates for category D (PCV) tests, December 2009-December 2010, overall and by gender

Produced on 27/01/2011												
Category: PCV												
	Male Cond	Male Pass	Male Pass %	Male SD	Female Cond	Female Pass	Female Pass %	Female SD	Total Tests	Total Passes	Total Pass %	Total SD
December 2009	469	239	51.0%		90	42	46.7%		559	281	50.3%	
January 2010	383	197	51.4%		82	50	61.0%		465	247	53.1%	
February 2010	589	294	49.9%		118	68	57.6%		707	362	51.2%	
March 2010	735	379	51.6%		147	95	64.6%		882	474	53.7%	
April 2010	674	348	51.6%		127	82	64.6%		801	430	53.7%	
May 2010	576	306	53.1%		113	78	69.0%		689	384	55.7%	
June 2010	640	324	50.6%		142	77	54.2%		782	401	51.3%	
July 2010	623	325	52.2%		125	76	60.8%		748	401	53.6%	
August 2010	635	314	49.4%		92	57	62.0%		727	371	51.0%	
September 2010	632	315	49.8%		121	73	60.3%		753	388	51.5%	
October 2010	644	340	52.8%		128	69	53.9%		772	409	53.0%	
November 2010	609	321	52.7%		143	86	60.1%		752	407	54.1%	
December 2010	300	164	54.7%		57	36	63.2%		357	200	56.0%	
NATIONAL FIGURES	7509	3866	51.5%	1.4%	1485	889	59.9%	5.5%	8994	4755	52.9%	1.7%

Table 12: Pass rates for category D (PCV) tests for candidates presenting with an interpreter between December 2010-December 2010, overall and by gender

Produced on 27/01/2011												
Category: PCV												
Interpreter	Male Cond	Male Pass	Male Pass %	Male SD	Female Cond	Female Pass	Female Pass %	Female SD	Total Tests	Total Passes	Total Pass %	Total SD
Dec-09	3	2	66.7%		0	0	0.0%		3	2	66.7%	
Jan-10	3	1	33.3%		1	0	0.0%		4	1	25.0%	
Feb-10	3	0	0.0%		2	1	50.0%		5	1	20.0%	
Mar-10	2	1	50.0%		0	0	0.0%		2	1	50.0%	
Apr-10	3	2	66.7%		2	0	0.0%		5	2	40.0%	
May-10	4	3	75.0%		0	0	0.0%		4	3	75.0%	
Jun-10	3	2	66.7%		2	0	0.0%		5	2	40.0%	
Jul-10	3	1	33.3%		0	0	0.0%		3	1	33.3%	
Aug-10	4	3	75.0%		0	0	0.0%		4	3	75.0%	
Sep-10	2	2	100.0%		0	0	0.0%		2	2	100.0%	
Oct-10	4	2	50.0%		0	0	0.0%		4	2	50.0%	
Nov-10	3	2	66.7%		2	1	50.0%		5	3	60.0%	
Dec-10	1	0	0.0%		0	0	0.0%		1	0	0.0%	
NATIONAL FIGURES	38	21	55.3%	28.2%	9	2	22.2%	18.0%	47	23	48.9%	25.7%

Table 13: Pass rates for category D (PCV) tests for candidates declaring a special need between August-September 2010, overall and by gender

Produced on 27/01/2011										
Category: PCV										
Special need	Male Cond	Male Pass	Male Pass %	Female Cond	Female Pass	Female Pass %	Total Tests	Total Passes	Total Pass %	
Aug-10		1	100.0%	0	0	0.0%	1	1	100.0%	
Sep-10		0	0.0%	1	1	100.0%	1	1	100.0%	
NATIONAL FIGURES		1	100.0%	1	1	100.0%	2	2	100.0%	