



14 December 2015

Year: 2015

Week: 50

In This Issue:

- Key messages.
- Syndromic indicators at a glance.
- Data summary.
- Indicators by syndrome.
- Cold/flu.
- Fever.
- Cough.
- Difficulty Breathing.
- Sore throat.
- Diarrhoea.
- Vomiting.
- Eye problems.
- Introduction to charts.
- Notes and further information.
- Acknowledgements.

Key messages

Data to: 13 December 2015

There was no further increase in cough and difficulty breathing calls in infants under 1 year in week 50 (figures 4a,& 5a).

A Cold Watch System operates in England from 1 November to 31 March each year. As part of the Public Health England Cold Weather Plan for England the PHE Real-time Syndromic Surveillance team will be monitoring the impact of cold weather on syndromic surveillance data during this period.

Cold weather alert level (current reporting week): **Level 1– Winter preparedness**
<http://www.metoffice.gov.uk/weather/uk/coldweatheralert/>

Syndromic indicators at a glance:

Indicator	Trend	Level *
Cold/flu	No trend	Below baseline levels
Fever	No trend	Below baseline levels
Cough	Decreasing	Similar to baseline levels
Difficulty breathing	Decreasing	Above baseline levels
Sore throat	No trend	Above baseline levels
Diarrhoea	No trend	Below baseline levels
Vomiting	No trend	Below baseline levels
Eye problems	No trend	Above baseline levels

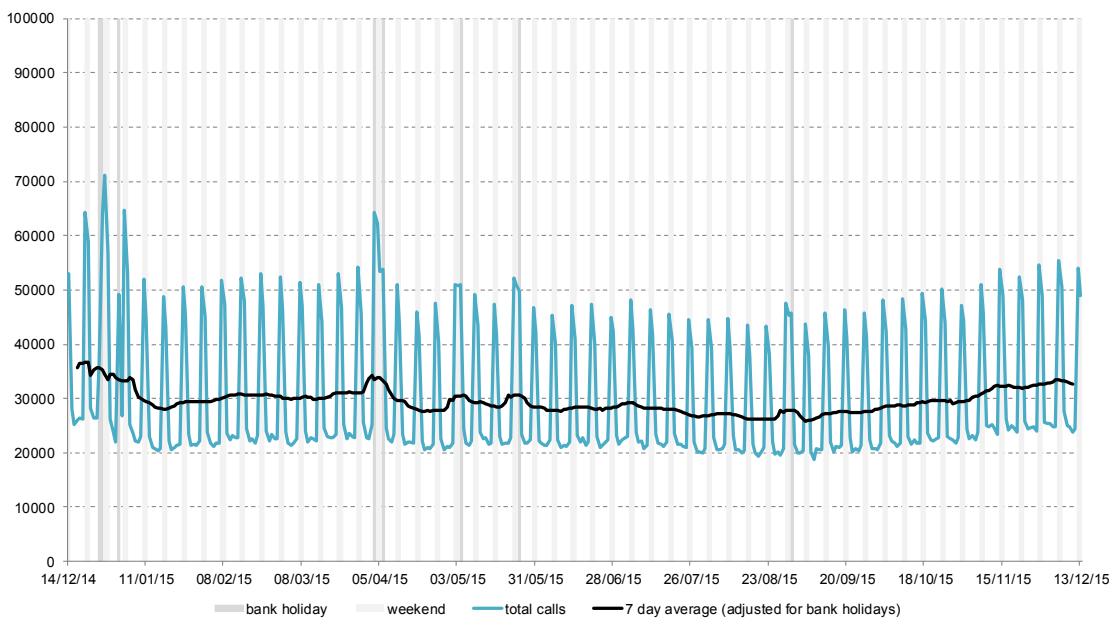
*Since week 47 2014 new baselines have been introduced for comparison with previous years. Baselines use historical data from the NHS Direct surveillance system to estimate seasonal trend but with levels adjusted to reflect changes since the switch to using NHS 111 data in September 2013.

Data summary:

Year	Week	Total calls
2015	50	228,903

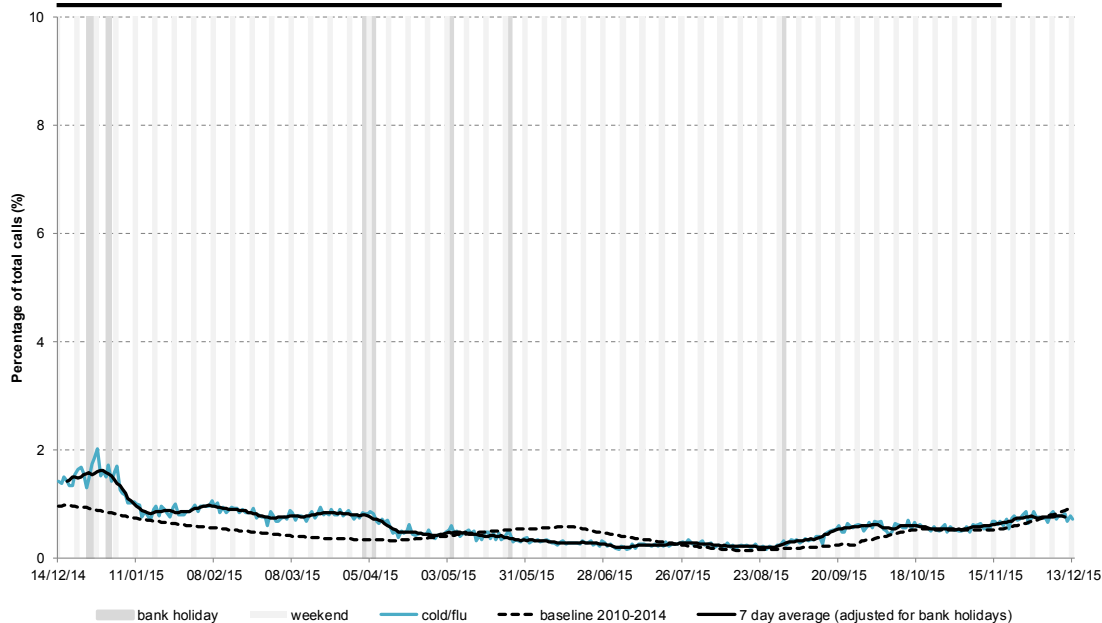
1: Total calls.

The total number of syndromic calls recorded each day by NHS 111.



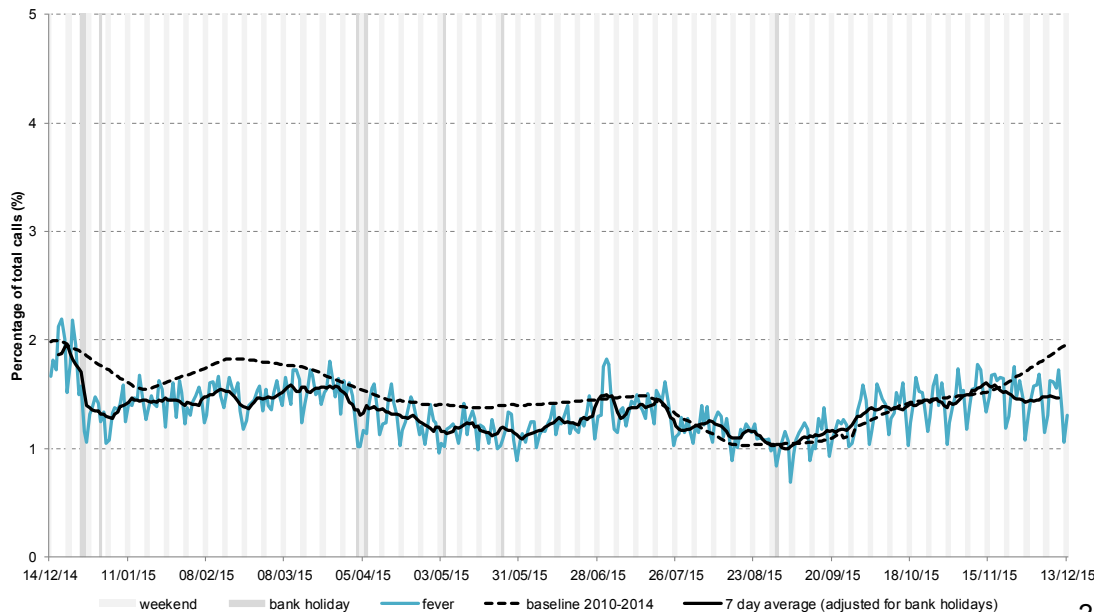
2: Cold/flu

Daily 'cold/flu' calls as a percentage of total calls. Baselines are constructed from historical data since 2010, including data from NHS 111 and NHS Direct.



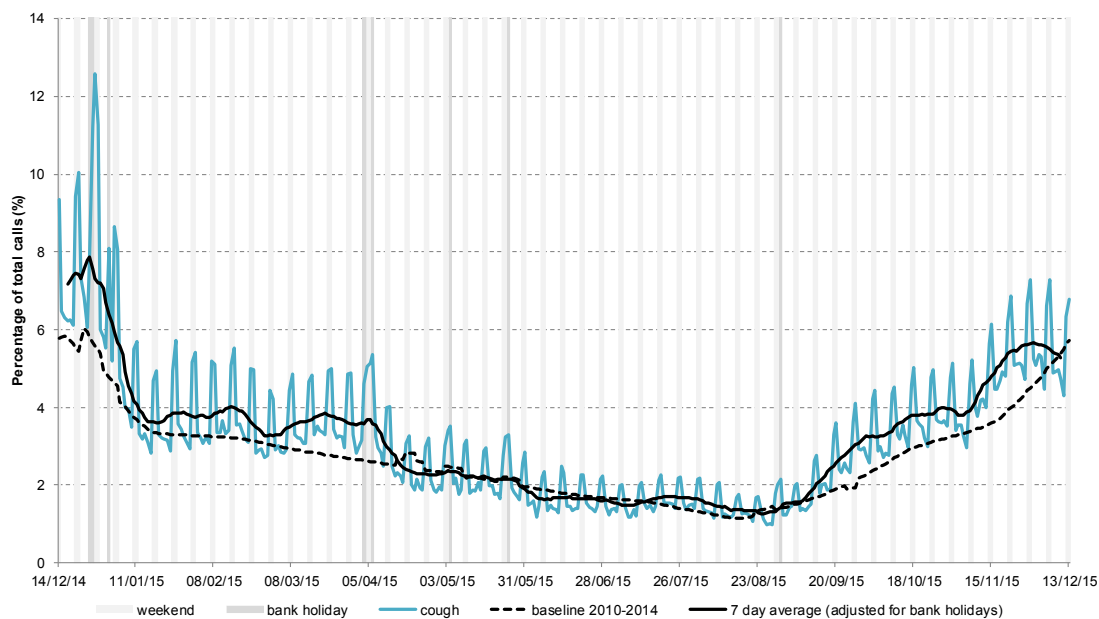
3: Fever

Daily 'fever' calls as a percentage of total calls. Baselines are constructed from historical data since 2010, including data from NHS 111 and NHS Direct.



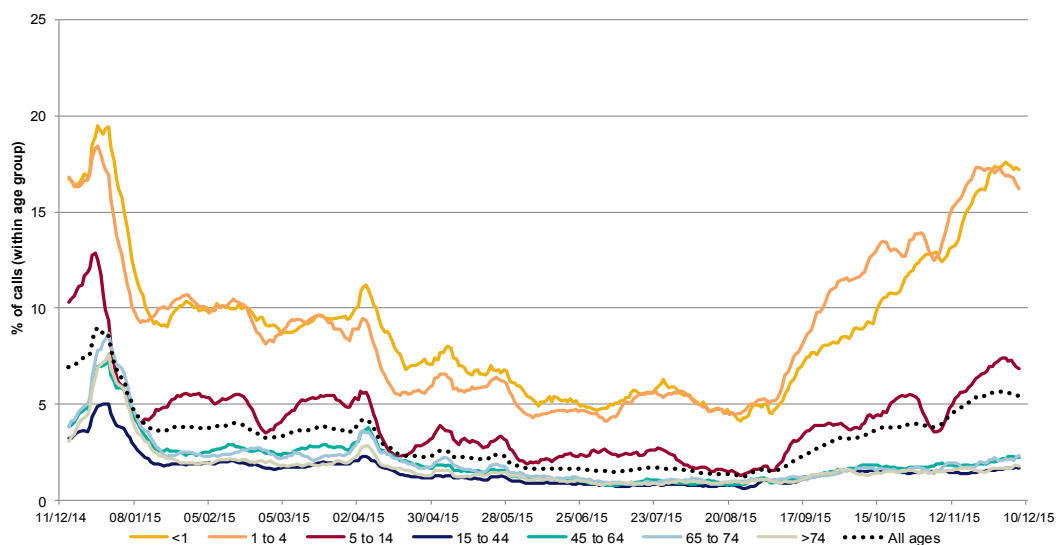
4: Cough

Daily 'cough' calls as a percentage of total calls. Baselines are constructed from historical data since 2010, including data from NHS 111 and NHS Direct.



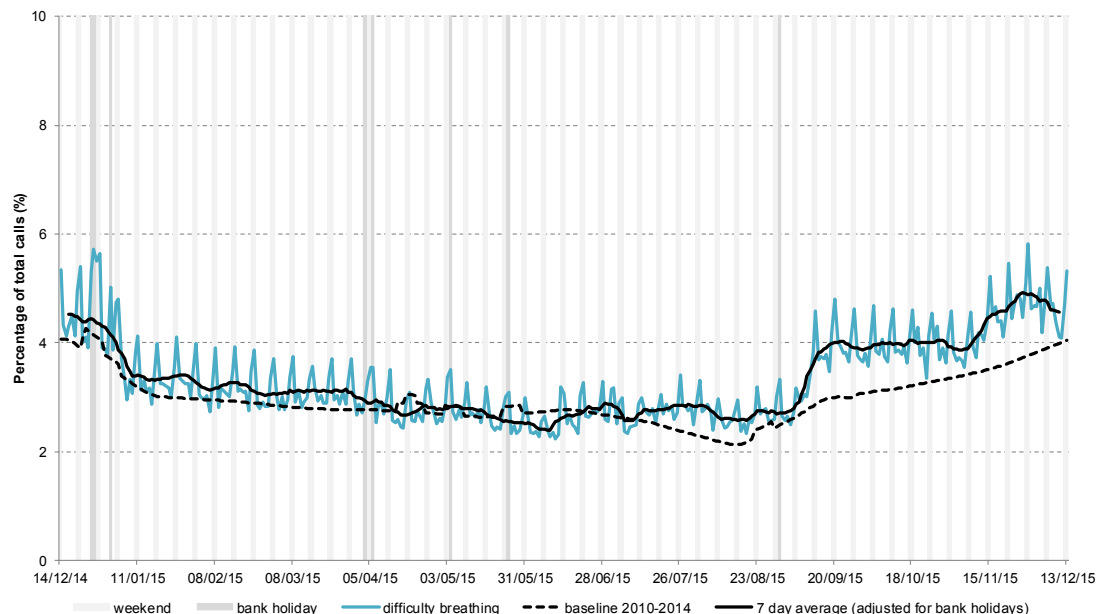
4a: Cough calls by age group

Cough calls as a percentage of total calls within each age group, shown as a 7 day moving average.



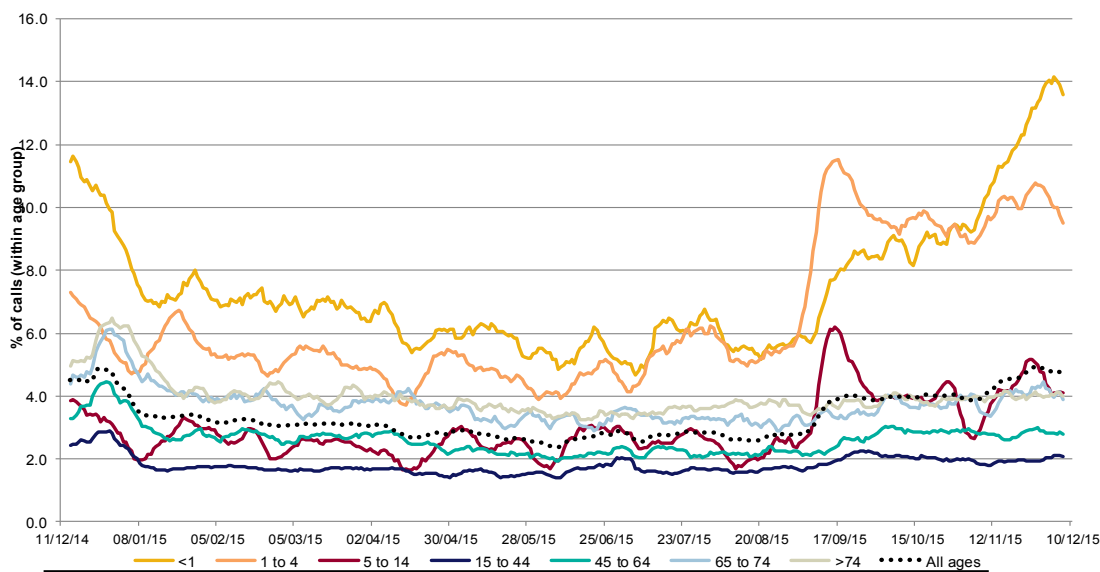
5: Difficulty breathing

Daily 'difficulty breathing' calls as a percentage of total calls. Baselines are constructed from historical data since 2010, including data from NHS 111 and NHS Direct.



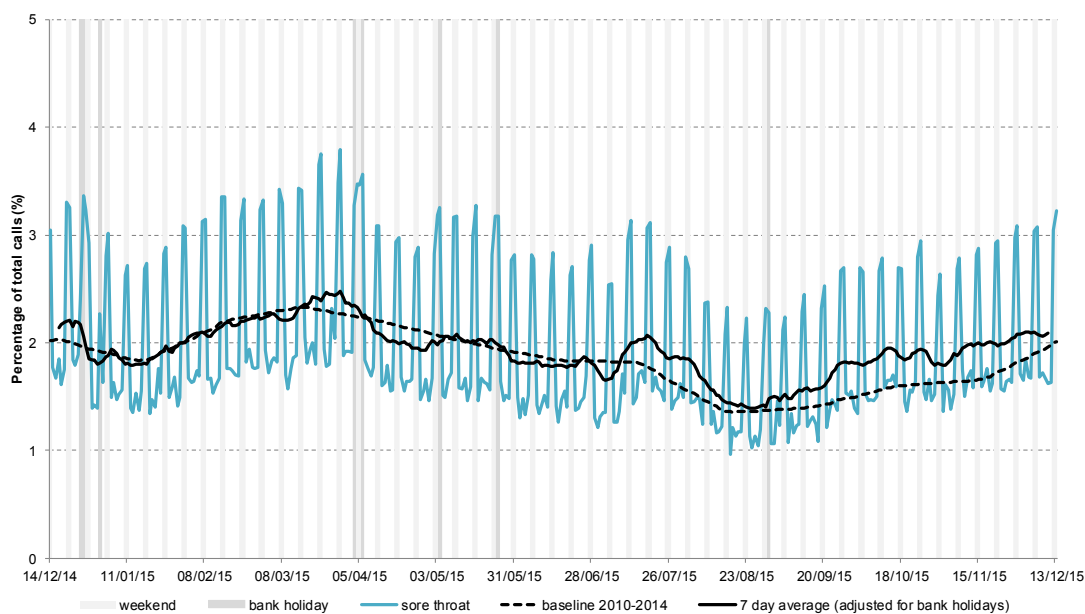
5a: Difficulty breathing calls by age group

Difficulty breathing calls as a percentage of total calls within each age group, shown as a 7 day moving average.



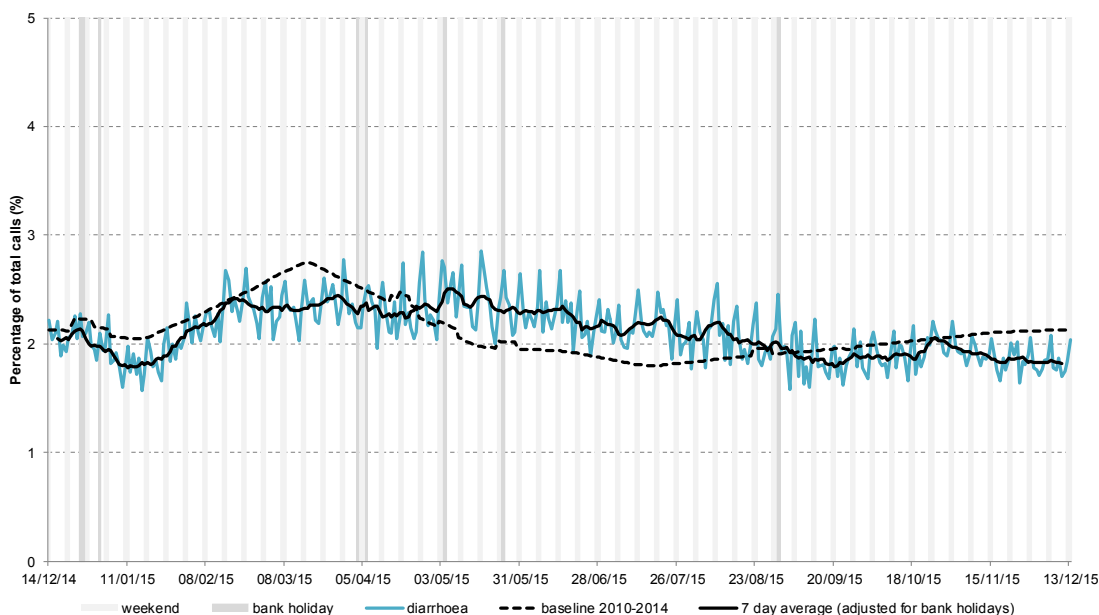
6: Sore throat

Daily 'sore throat' calls as a percentage of total calls. Baselines are constructed from historical data since 2010, including data from NHS 111 and NHS Direct.



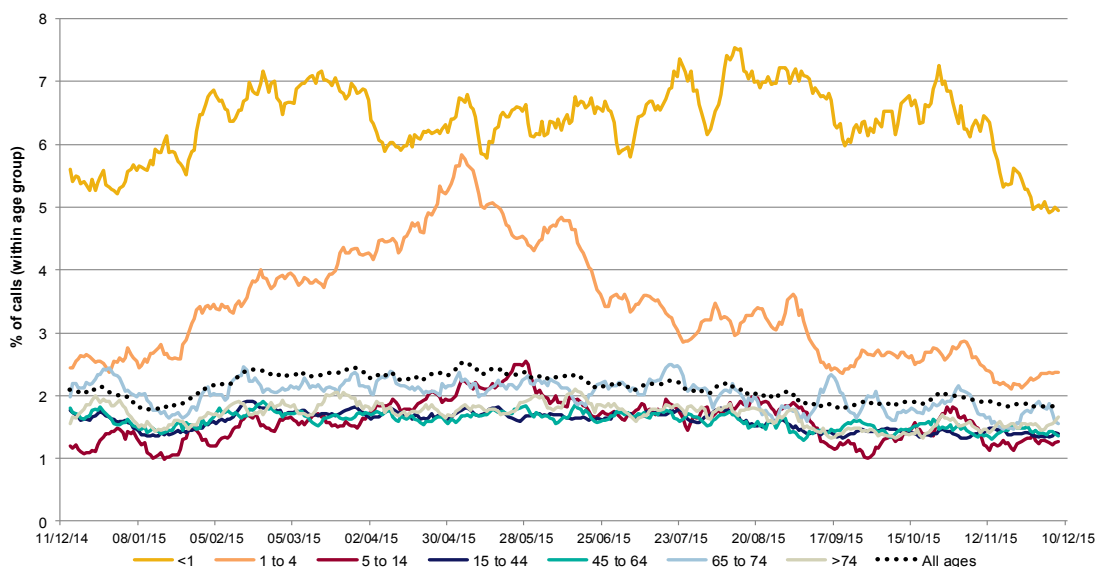
7: Diarrhoea

Daily 'diarrhoea' calls as a percentage of total calls. Baselines are constructed from historical data since 2010, including data from NHS 111 and NHS Direct.



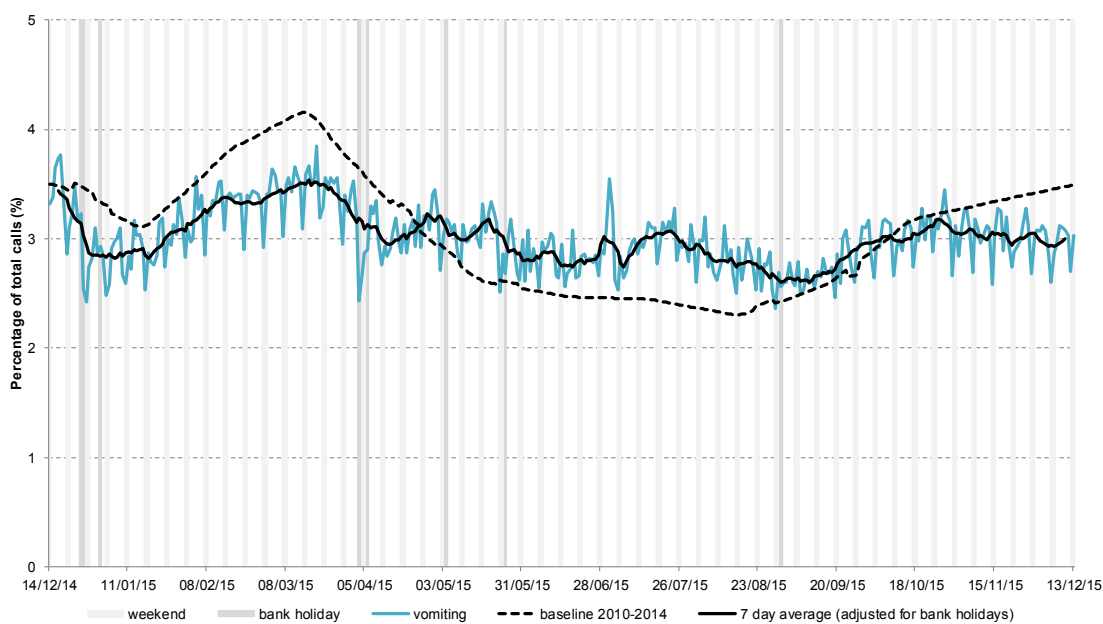
7a: Diarrhoea by age group

Diarrhoea calls as a percentage of total calls within each age group, shown as a 7 day moving average.



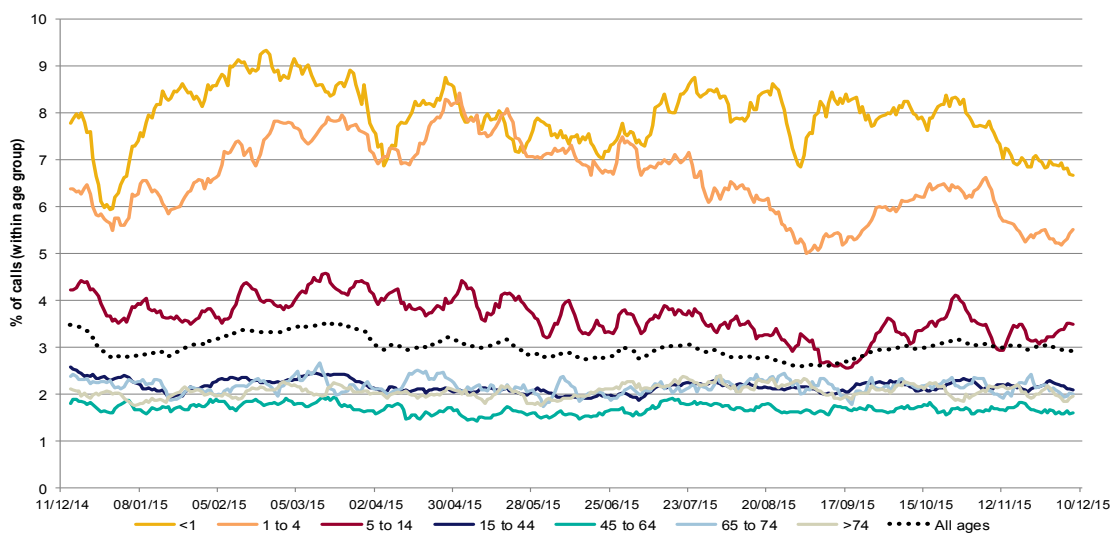
8: Vomiting

Daily 'vomiting' calls as a percentage of total calls. Baselines are constructed from historical data since 2010, including data from NHS 111 and NHS Direct.



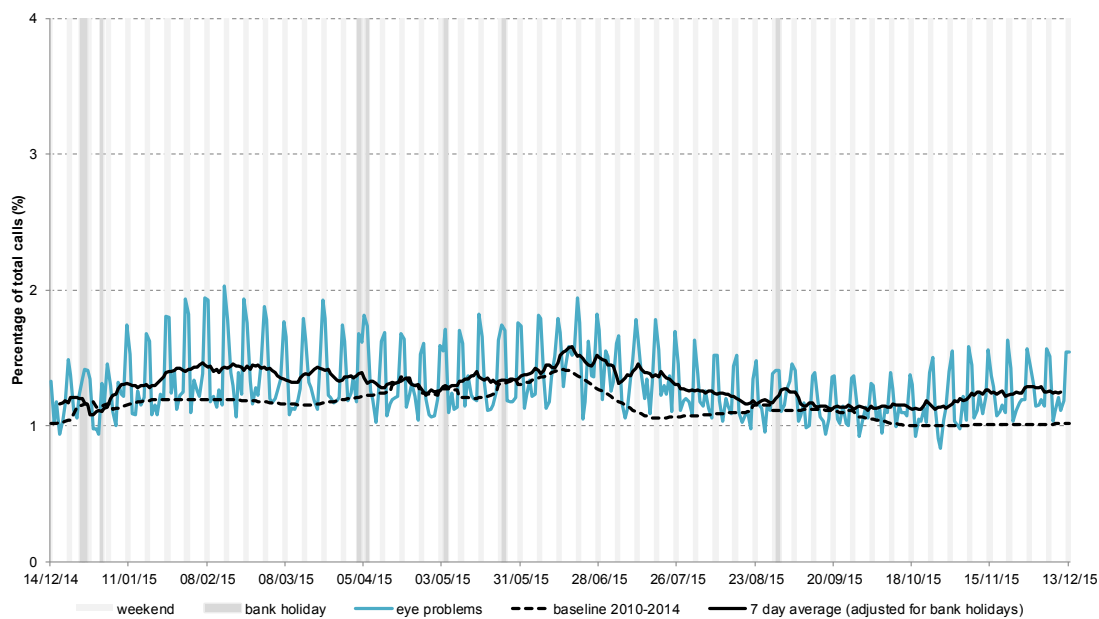
8a: Vomiting by age group

Vomiting calls as a percentage of total calls within each age group, shown as a 7 day moving average.



9: Eye problems

Daily 'eye problems' calls as a percentage of total calls. Baselines are constructed from historical data since 2010, including data from NHS 111 and NHS Direct.



Intentionally blank

Intentionally blank

Introduction to charts:

- Weekends and bank holidays are marked by vertical **grey** lines (bank holidays **darker grey**).
- A 7-day moving average (adjusted for bank holidays) is overlaid on the daily data reported in each chart, unless specified.
- Baselines are constructed using historical data, including data from both NHS111 and the NHS Direct syndromic system (which was replaced by NHS 111 data in September 2013). Seasonal trends reflect the average over past years, with levels adjusted to reflect differences between NHS 111 and NHS Direct data.
- This new syndromic surveillance system is still under development and further analyses at PHE Centre level will be included in future bulletins.
- NHS 111 call data are analysed on a daily basis to identify national and regional trends. A statistical algorithm underpins each system, routinely identifying activity that has increased significantly or is statistically significantly high for the time of year. Results from these daily analyses are assessed by the ReSST, along with analysis by age group, and anything deemed of public health importance is alerted by the team.

Notes and further information:

Further information about NHS 111 can be found at:

<http://www.nhs.uk/NHSEngland/AboutNHSservices/Emergencyandurgentcareservices/Pages/NHS-111.aspx>

The Remote Health Advice Syndromic Surveillance bulletin can also be downloaded from the PHE Real-time Syndromic Surveillance website which also contains more information about syndromic surveillance:

<https://www.gov.uk/government/collections/syndromic-surveillance-systems-and-analyses>

Acknowledgements:

We are grateful to NHS 111 and to HSCIC for their assistance and support in providing the anonymised call data that underpin the Remote Health Advice Syndromic Surveillance System.

Remote Health Advice Syndromic Surveillance System Bulletin.

Produced by: PHE Real-time Syndromic Surveillance Team
6th Floor, 5 St Philip's Place, Birmingham, B3 2PW

Tel: 0344 225 3560 > Option 4 > Option 2

Fax: 0121 236 2215

Web: <https://www.gov.uk/government/collections/syndromic-surveillance-systems-and-analyses>