

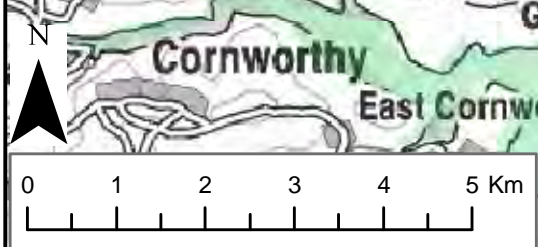
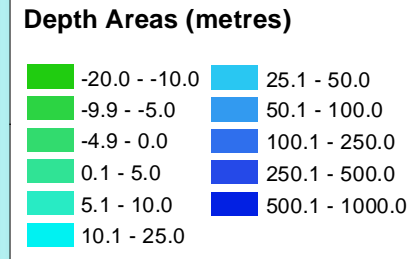
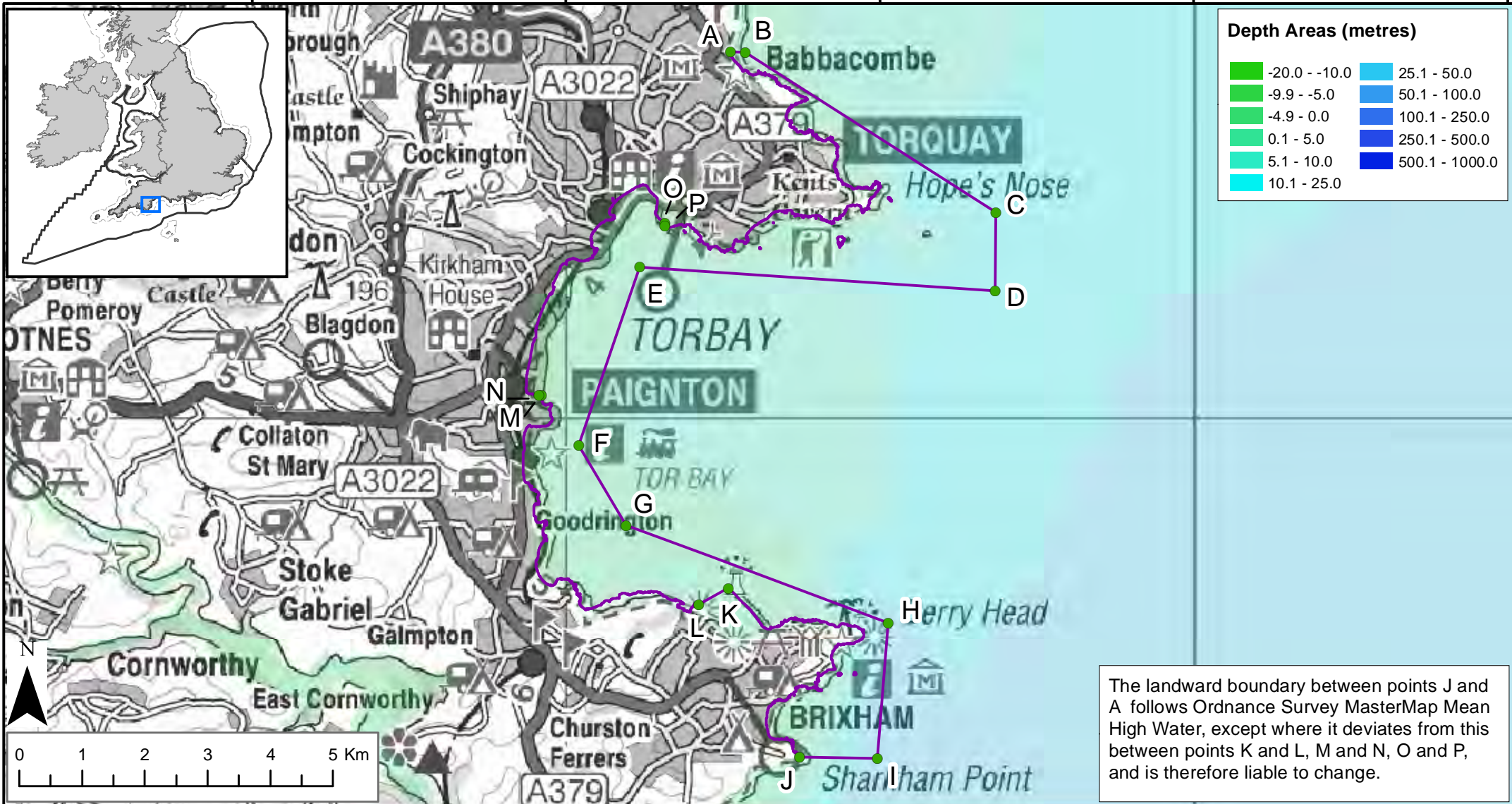
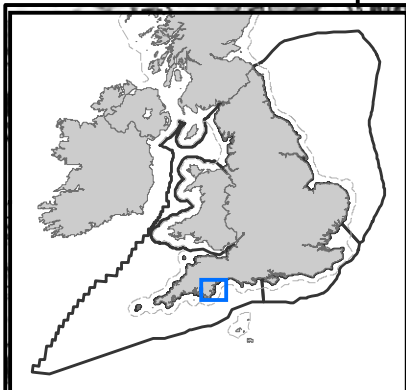
285000.000000

290000.000000

295000.000000

300000.000000

305000.000000



The landward boundary between points J and A follows Ordnance Survey MasterMap Mean High Water, except where it deviates from this between points K and L, M and N, O and P, and is therefore liable to change.

Torbay MCZ Boundary

- Marine Conservation Zone
- MCZ boundary co-ordinates
- 12nM Territorial Seas Limit
- Land

| Point | Lat | Long | Point | Lat | Long |
|-------|------------------|-----------------|-------|------------------|-----------------|
| A | 50°28' 56.577" N | 3°30' 53.713" W | I | 50°22' 54.176" N | 3°28' 43.575" W |
| B | 50°28' 56.672" N | 3°30' 41.504" W | J | 50°22' 53.948" N | 3°29' 46.345" W |
| C | 50°27' 36.776" N | 3°27' 16.558" W | K | 50°24' 20.277" N | 3°30' 46.261" W |
| D | 50°26' 56.267" N | 3°27' 16.201" W | L | 50°24' 11.481" N | 3°31' 10.201" W |
| E | 50°27' 4.566" N | 3°32' 3.667" W | M | 50°25' 57.664" N | 3°33' 20.724" W |
| F | 50°25' 32.303" N | 3°32' 49.579" W | N | 50°25' 57.698" N | 3°33' 22.789" W |
| G | 50°24' 51.681" N | 3°32' 9.958" W | O | 50°27' 27.653" N | 3°31' 44.030" W |
| H | 50°24' 4.093" N | 3°28' 36.757" W | P | 50°27' 26.162" N | 3°31' 44.055" W |

Contains information from the Ordnance Survey © Crown Copyright and database right 2013. Ordnance Survey 100022021. UKHO Data © British Crown Copyright. All rights reserved. Permission Number Defra012013.001. This product has been derived in part from material obtained from the UK Hydrographic Office with the permission of the Controller of Her Majesty's Stationery Office and UK Hydrographic Office (www.ukho.gov.uk). Map produced by Natural England 2013. Reference: Theme ID: 1477643 Map Projection: British National Grid