

Heritage sub-group

London
16th March 2017

Welcome & introductions

Agenda

- Terms of Reference
- Phase One Forward Look
- Schedule 17
- GWSI: HERDS
- SharePoint
- AOB

Heritage Sub-Group Terms of Reference

Phase One Heritage Sub-Group Terms of Reference Review

- Purpose
- Membership
- Function
- Outputs
- Chair and meetings
- Record keeping

Terms of Reference Review

- Much stays the same
- Amendments to reflect
 - progression of project terminology, e.g. 'historic environment', supply chain, contractors
 - completed elements, e.g. the environmental minimum requirements
 - the next stages, e.g. detailed design and implementation

Thank you

Phase One Construction

Mike Court

16th March 2017

Design of Historic environment works at critical locations (EDP)

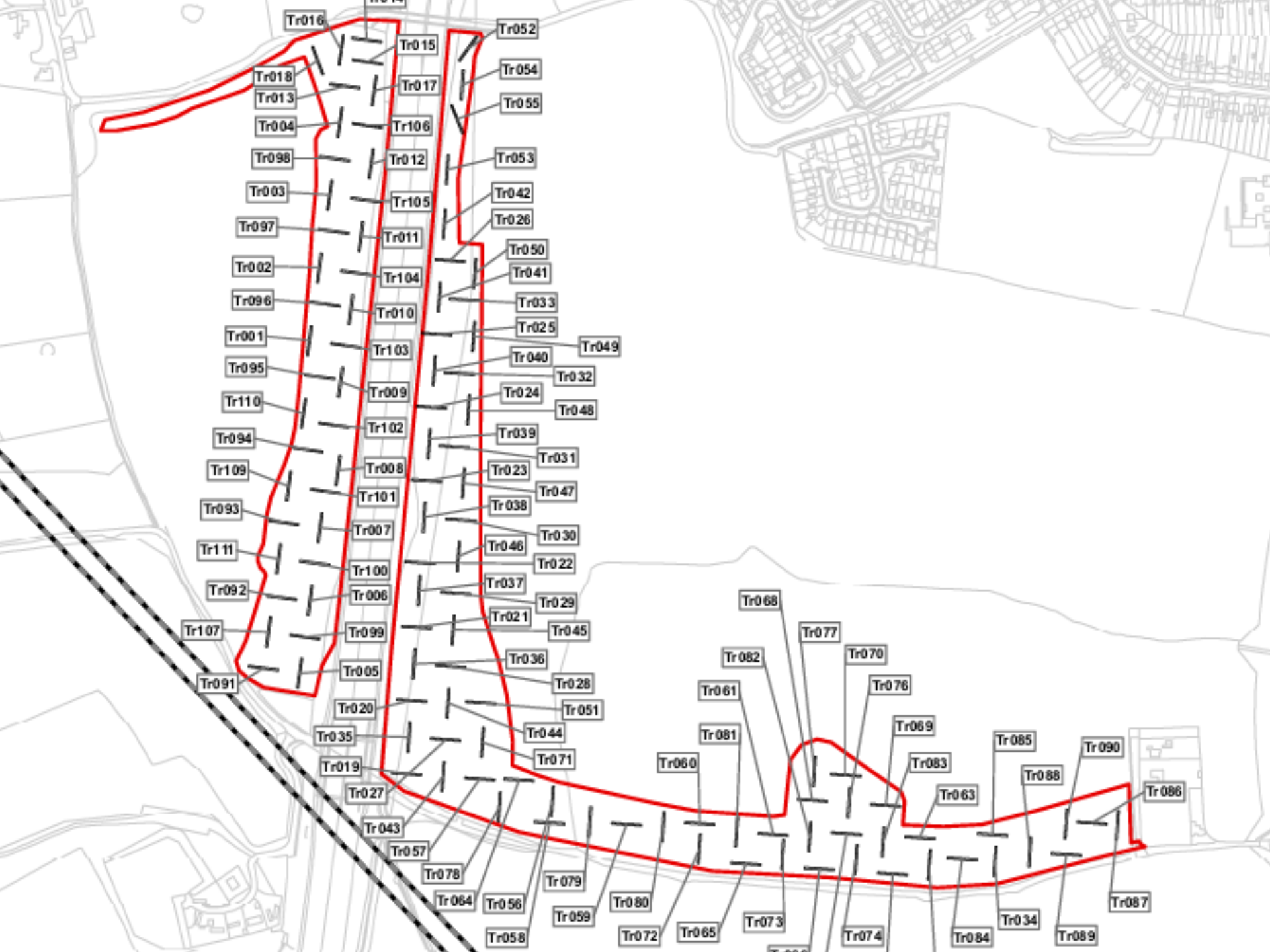
- Critical locations include habitat creation sites, some utilities, road diversions.
- The EDP have been preparing:
 - Detailed Desk-Based Assessments
 - Project Plans for geophysical surveys and INTRUSIVE EVALUATIONS
 - Developing Schedule 18 Heritage Method Statements
 - Liaising with the Enabling Works Contractor to exchange knowledge and bring them up to speed
 - Planning for handover to the Enabling Works Contractors
- The EDP will continue with this for the next couple of months.

Enabling Works Contractor (EWC)

- **Onboarding:** assimilating the vast quantity of information
- **Packaging of works:** each area (North, Central and South) will have two major packages of work:
 - Priority – historic environment works in advance of urgent habitat creation, utilities and so forth – stuff that we have to start over the next 2 or 3 months
 - Everything else – designing, managing and delivering the historic environment works.
- Developing the 'programme of historic environment investigation and recording works' as required by the Heritage Memorandum
 - Location, activity, LA area, CFA reference, start and end dates.....

The first intrusive fieldwork

- Starting intrusive archaeological fieldwork in April
 - M25 slip road in Hertfordshire



Other news

- Welcome to **Tony Hanna**
 - Area North Historic Environment Manager.

Questions?

historic_environment@hs2.org.uk

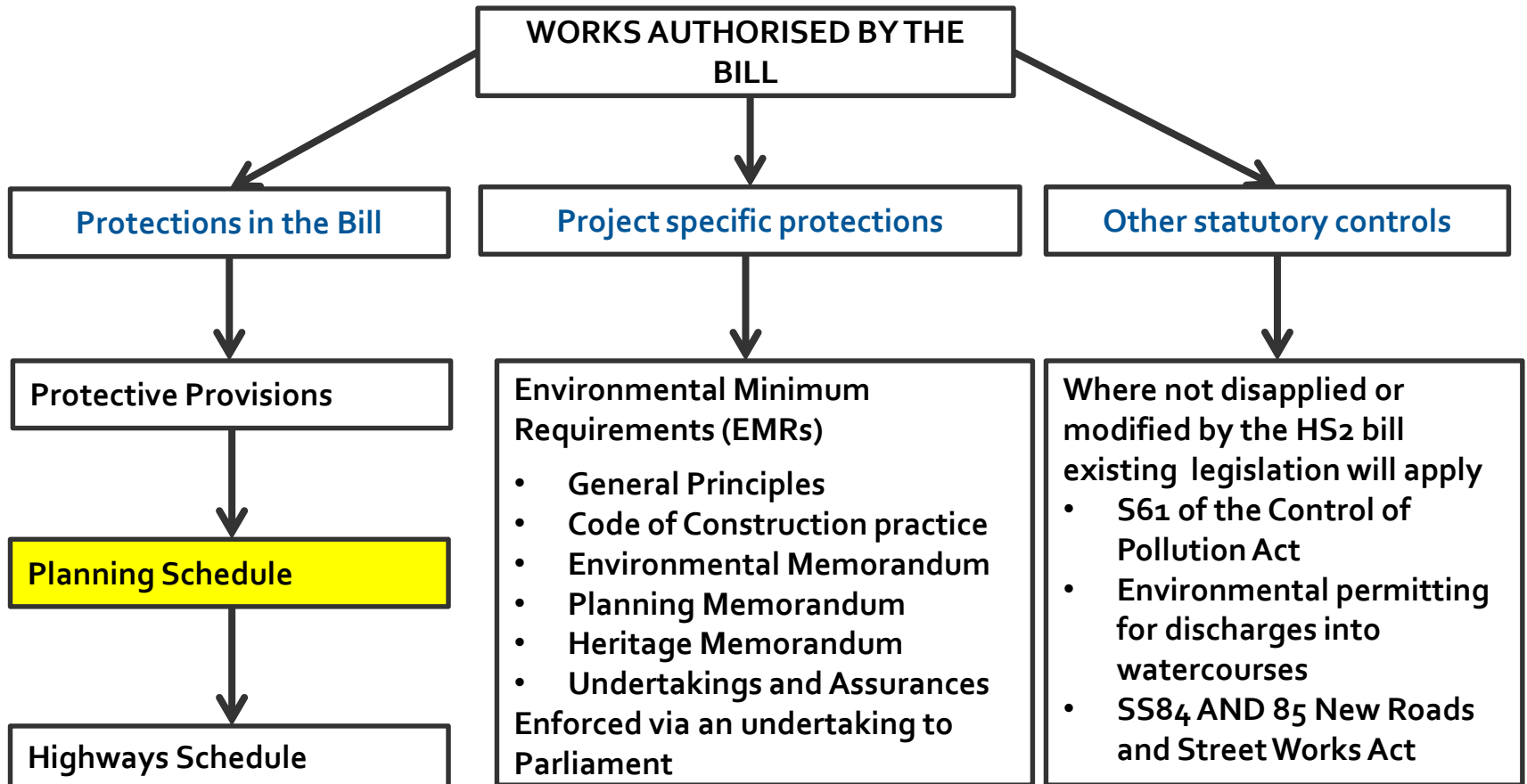


Paul Gilfedder, Town Planning Lead – Phase One
HS2 Ltd

Planning in The High Speed Rail (London – West Midlands) Act 2017

- The Act one of the principal controls local authorities will have
- The Nominated Undertaker (High Speed Two (HS2) Ltd) building HS2 will have to obtain a range of approvals from local authorities
- This is different to 'normal' planning local authorities are used to
- Statutory Guidance
https://www.gov.uk/government/uploads/system/uploads/attachment_data/file/592755/hs2-schedule-17-statutory-guidance.pdf
- Needs to be seen in the context of controls imposed through the hybrid bill process

Controls in place on the HS2



HS2 Planning Regime

Design

**Construction
matters**

**Lorry
routes**

**Site
restoration**

Mitigation

**Minerals
and waste
sites**

Approvals: Plans and specifications

- buildings
- road vehicle parks
- terracing
- cuttings
- embankments and other earthworks
- fences
- walls or other barriers
- transformers
- telecommunication masts
- pedestrian access to the railway line
- artificial lighting
- waste and spoil disposal
- borrow pits



Approvals: Plans and Specifications

- Grounds for consideration and conditioning:
 - '(a) *the design and external appearance of the building works ought to be modified –*
 - (i) *To preserve the local environment or local amenity*
 - (ii) *To prevent or reduce prejudicial effects on road safety or on the free flow of traffic in the local area, or*
 - (iii) *To preserve a site of archaeological or historic interest or nature conservation value,*
and is reasonably capable of being so modified, or
 - (b) *The development ought to, and could reasonable, be carried out elsewhere within the development's permitted limits.*

Pre-submission engagement

Planning Memorandum:

...the nominated undertaker shall engage in proportionate forward discussions about prospective requests for approval with the qualifying authority and statutory consultees. Forward discussions will, as relevant, include design development...

Pre-submission engagement

- This will take place with the relevant planning authority.
- For plans and specs this will almost always be the district or unitary council
- HS2 Ltd/contractor's town planners will set meeting with the authority's planners
- Meetings will be set up through the authority's town planners
- It will be for them to them to decide who to invite

Pre-submission engagement

- Will discuss the design of the works
- This can include how they relate to heritage features
- Engagement can consider reasonable modifications in response to heritage assets

Statutory consultation

- Roles for:
 - Historic Buildings and Monuments Commission for England
 - a) a site of archaeological or historic interest
- Comments must be invited by the planning authority within five days of receiving the request
- 21 days for consultee to respond

Statutory consultation

- Site of archaeological or historic interest not defined
- For the authority to decide on an application by application basis
- Further discussions to take place with HE on the this consultation process

Questions?

HERDS update and digital platform

March 2017

General Update

- Route wide geo-archaeological Desk-based Assessment
- Route wide palaeo-environmental archaeological assessment
- First wave of Project plans for detailed desk-based assessment and fieldwork being reviewed
- First Detailed Desk-based Assessments being reviewed

HERDS digital platform

- Web-based portal for access to information and to facilitate knowledge sharing,
- Will enable ongoing review and management of HERDS, review of the resource assessment and Specific Objectives
- Web-based portal or front page linking to documents and a GIS
- Access for defined users

Digital Platform Main Components and Content

- A 'How To' Guide
- Ethos, Principles and Headline Objectives
- Strategies, Specifications and Procedures
- Links to Regional/ National Research Frameworks
- The HERDS resource assessment
- Specific Objectives
- Fieldwork reports
- Project Plans and LS-WSIs

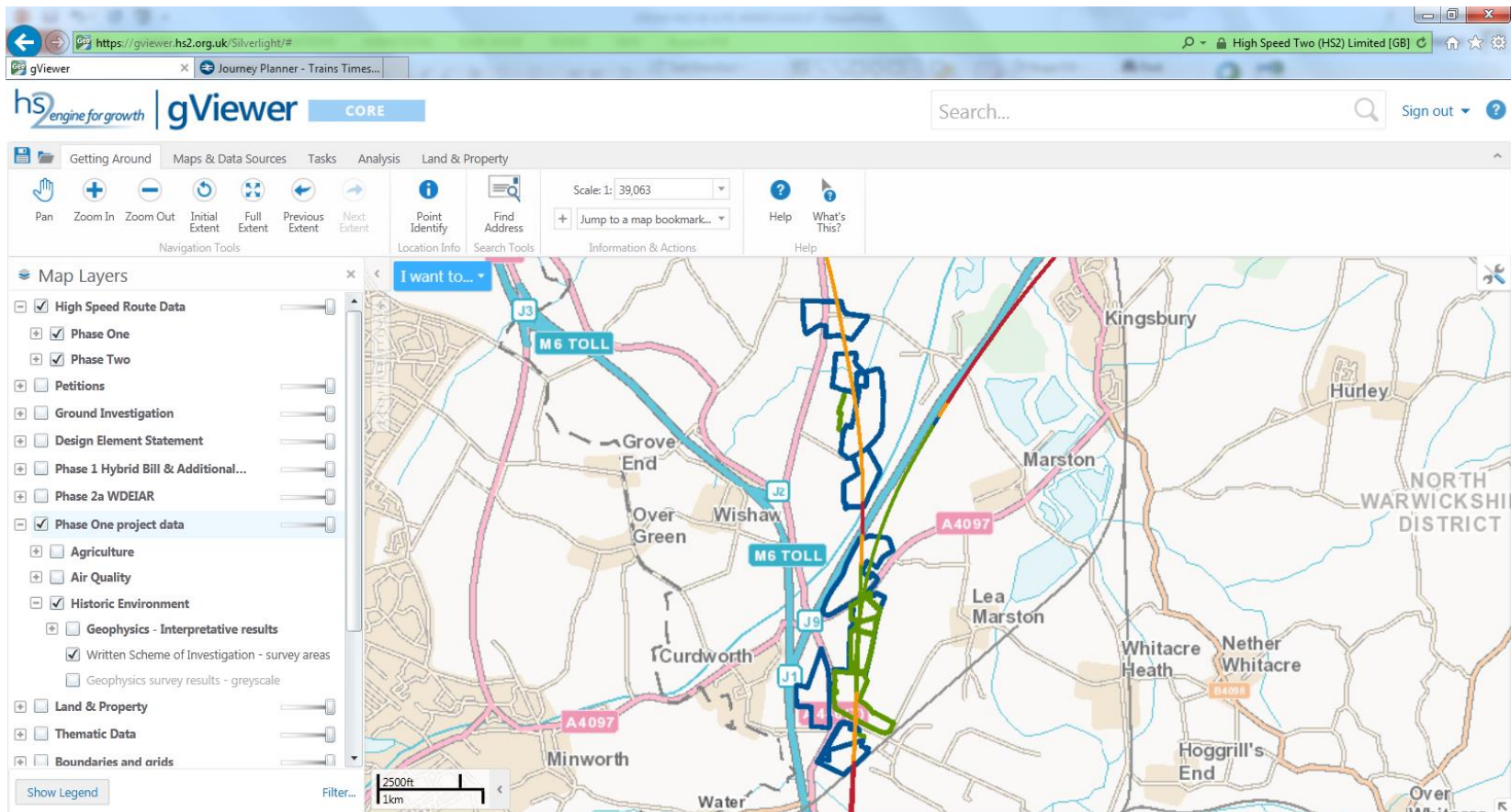
Updates and review of objectives

- Approved users able to update and amend the resource assessment and Specific Objectives
- Updates will be moderated by the employer
- Formal updates and deliverables for employer review

Digital Platform and GIS

- GIS will enable users to:
- View spatial extent of fieldwork, Project Plan and WSI areas
- Filter by Specific Objective type, period type, key words
- Query by works status
- See baseline data and ongoing results, with links to reports
- Approved users will be able to add and edit data

Current HS2 GIS portal (gViewer)



Questions?

historic_environment@hs2.org.uk



<https://highspeedtwo.sharepoint.com/sites/stakeholders/hsg/SitePages/Home.aspx>



Sign in to your account

Secure | <https://login.microsoftonline.com/login.srf?wa=wsignin1%2E0&rpsnv=4&ct=1489589139&rver=6%2E1%2E6206%2E0&wp=M>

Łączyć Connecte 连接 Ligue Connect تواصل Verbinden つなぐ Yhidistā povezati להתחבר

Office 365

Work or school, or personal Microsoft account

Email or phone

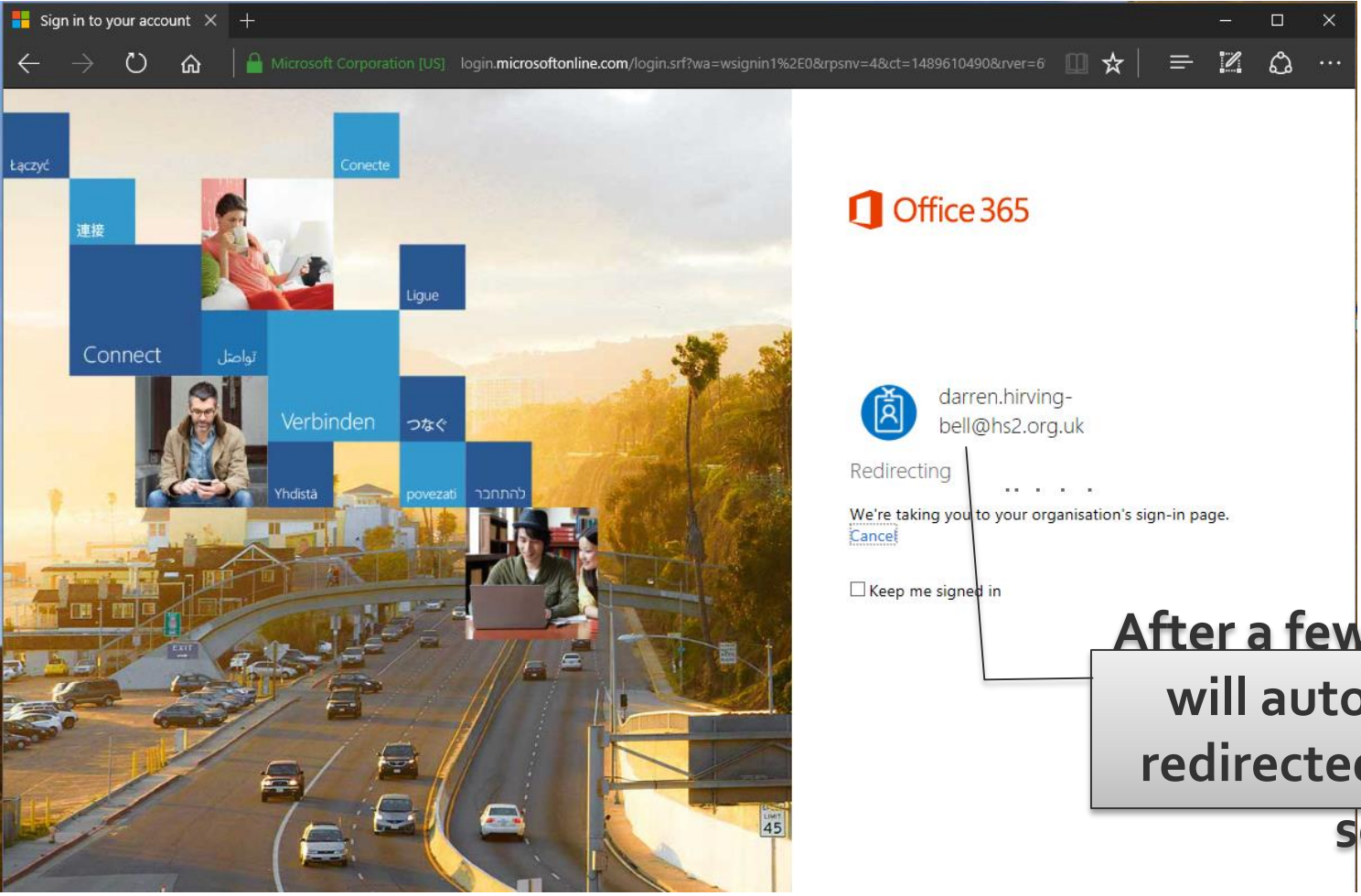
Password

Keep me signed in

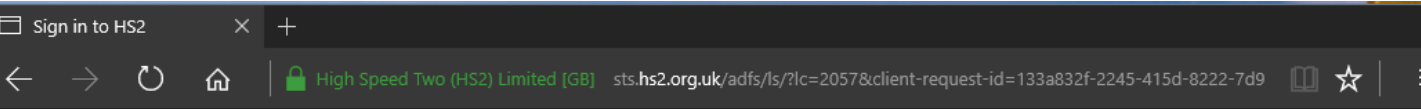
Sign in

Can't access your account

Enter your username only
(password is not required at this stage)



After a few moments you will automatically be redirected to HS2 login screen



Sign in to HS2



Type your HS2 user name and password.

User name: Example: user.name@hs2.org.uk

Password:

**Enter your HS2 username
and password**

UN: John.doe.PSC@hs2.org.uk
PW: *****



Heritage Sub-Group

Home
Site contents

Documents

New Upload Sync Share More

Find a file

✓	Name	Modified	Modified By
	2016 Technical Documents	December 7, 2016	Chris Jordan
	County Specific Documents	August 25, 2015	Michael Court
	Documents for HS-G Consultation	August 25, 2015	Michael Court
	Heritage Sub-Group Uploads	August 25, 2015	Michael Court
	HS-G Admin	August 25, 2015	Chris Jordan
	Routewide Documents	August 25, 2015	Michael Court

Drag files here to upload

Once logging on process is complete you will see the following screen.

Agendas, notes and resources

<https://www.gov.uk/government/collections/hs2-phase-one-planning-forum-heritage-subgroup>

Copyright notice

The copyright for this presentation remains with HS2 Ltd.

It cannot be reproduced as a whole or in part without written permission from HS2 Ltd.