



06 May 2015

Year: 2015 Week: 18

In This Issue:

- Key messages.
- Diagnostic indicators at a glance.
- GP practices and denominator population.
- National syndromic indicators.
- Notes and further information.
- Appendix.

Key messages

Data to: 04 May 2015

GP consultations for allergic rhinitis decreased during week 18, remaining in line with seasonally expected levels (figure 14). Highest rates were reported in the 5-14 years age group (figure 14a).

Diagnostic indicators at a glance:

Indicator	Trend	Level
Upper respiratory tract infection	no trend	similar to baseline levels
Influenza-like illness	decreasing	similar to baseline levels
Pharyngitis	no trend	similar to baseline levels
Scarlet fever	decreasing	similar to baseline levels
Lower respiratory tract infection	decreasing	similar to baseline levels
Pneumonia	decreasing	similar to baseline levels
Gastroenteritis	increasing	similar to baseline levels
Vomiting	increasing	above baseline levels
Diarrhoea	increasing	similar to baseline levels
Severe asthma	no trend	similar to baseline levels
Wheeze	no trend	above baseline levels
Allergic rhinitis	decreasing	
Conjunctivitis	decreasing	below baseline levels
Mumps	no trend	below baseline levels
Measles	no trend	below baseline levels
Rubella	no trend	similar to baseline levels
Pertussis	no trend	similar to baseline levels
Chickenpox	no trend	below baseline levels
Herpes zoster	no trend	similar to baseline levels
Cellulitis	no trend	similar to baseline levels
Impetigo	no trend	similar to baseline levels

GP practices and denominator population:

Year	Week	GP Practices Reporting**	Population size**
2015	18	4068	29.9 million

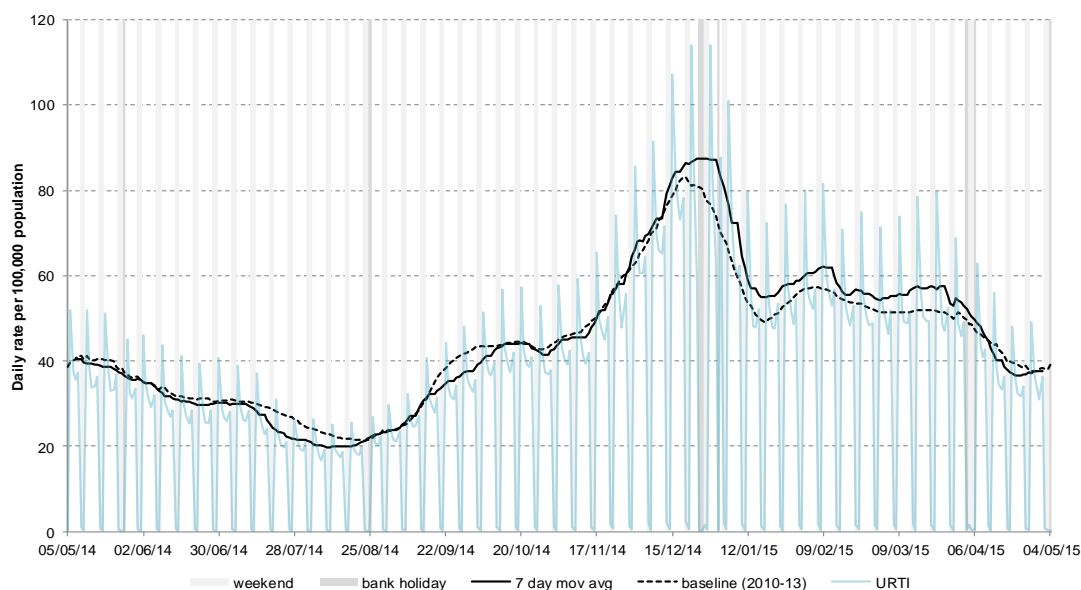
**based on the average number of practices and denominator population in the reporting working week.

06 May 2015

Year: 2015 Week: 18

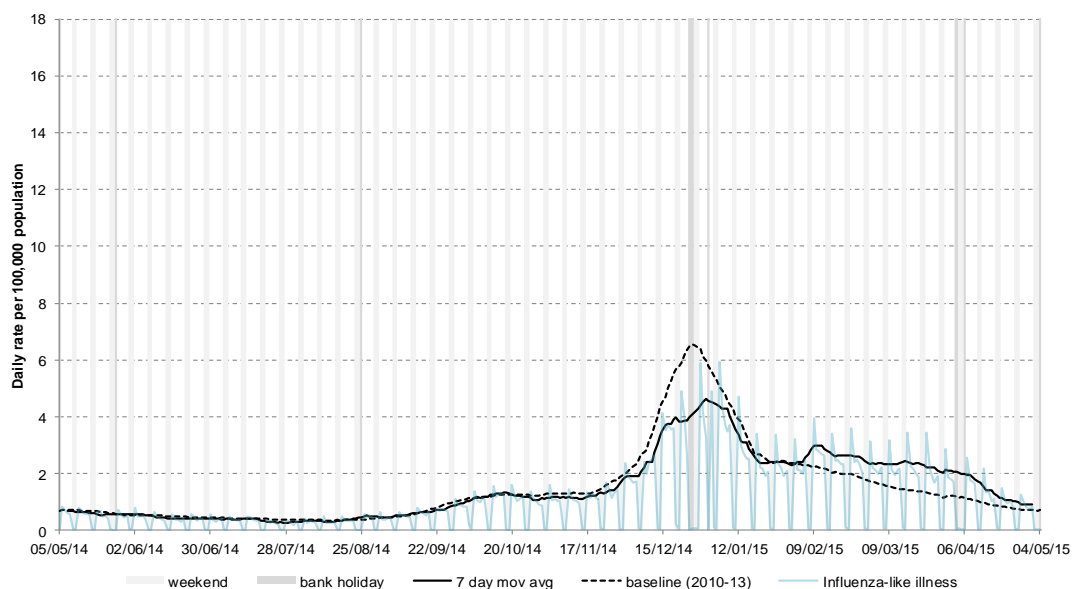
1: Upper respiratory tract infection (URTI)

Daily incidence rate (and 7-day moving average*) per 100,000 population (all England, all ages).



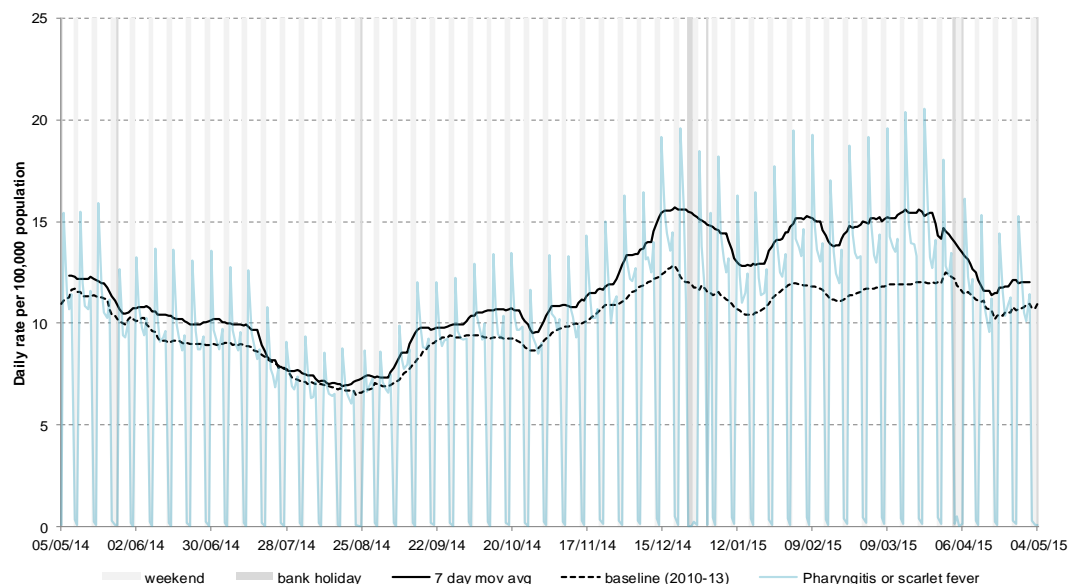
2: Influenza-like illness (ILI)

Daily incidence rates (and 7-day moving average*) per 100,000 population (all England, all ages).



3: Pharyngitis or scarlet fever

Daily incidence rates (and 7-day moving average*) per 100,000 population (all England, all ages).



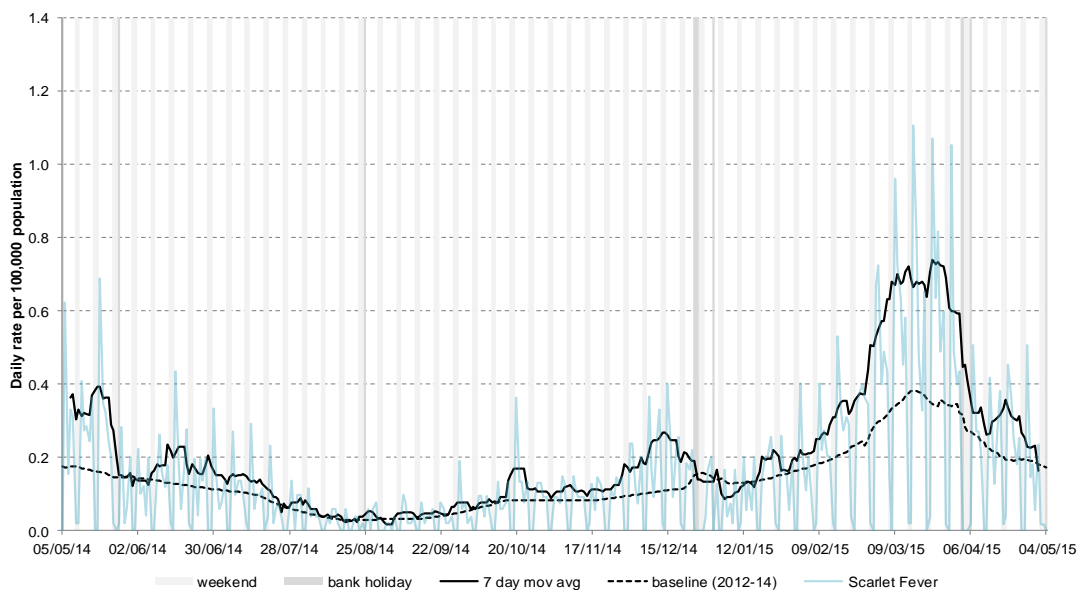
* 7-day moving average adjusted for bank holidays.

06 May 2015

Year: 2015 Week: 18

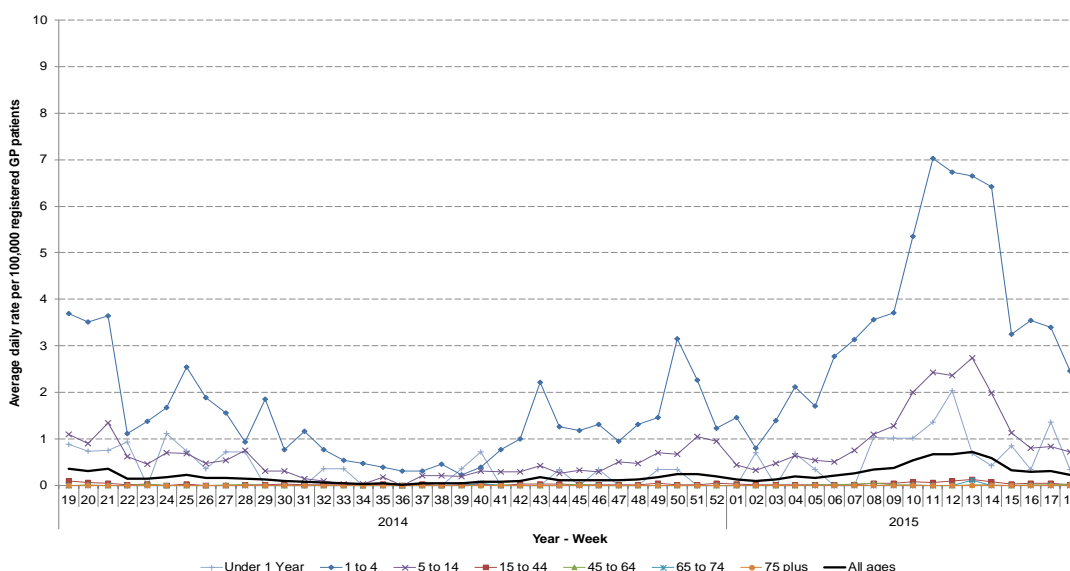
4: Scarlet fever

Daily incidence rate (and 7-day moving average*) per 100,000 population (all England, all ages).



4a: Scarlet fever by age

Average daily incidence rate by week per 100,000 population (all England, based on a population denominator of approximately 5.5 million patients).



5. Intentionally left blank

Intentionally left blank.

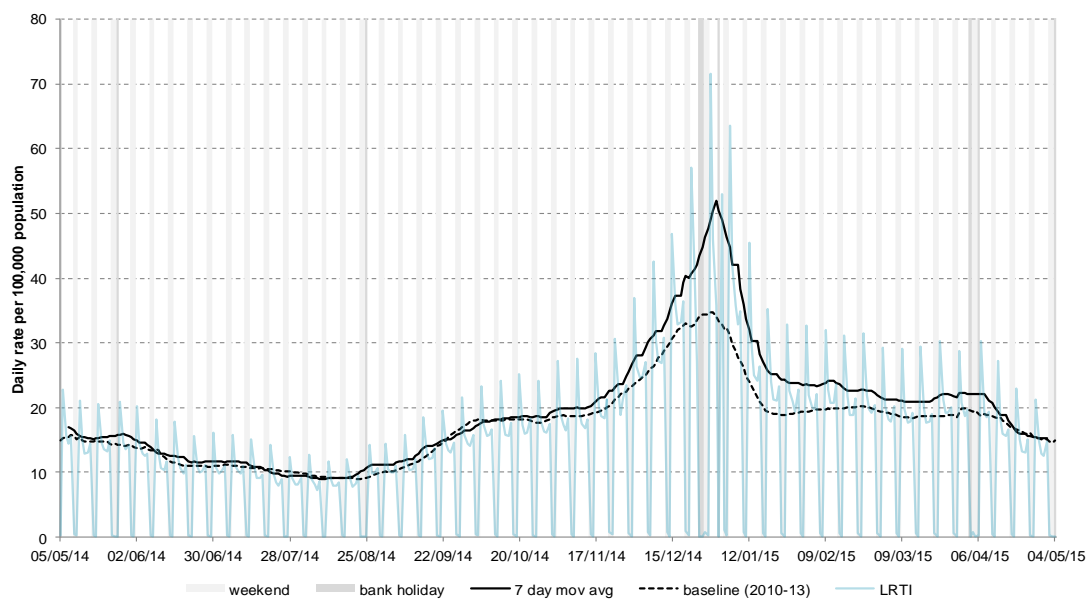
* 7-day moving average adjusted for bank holidays.

06 May 2015

Year: 2015 Week: 18

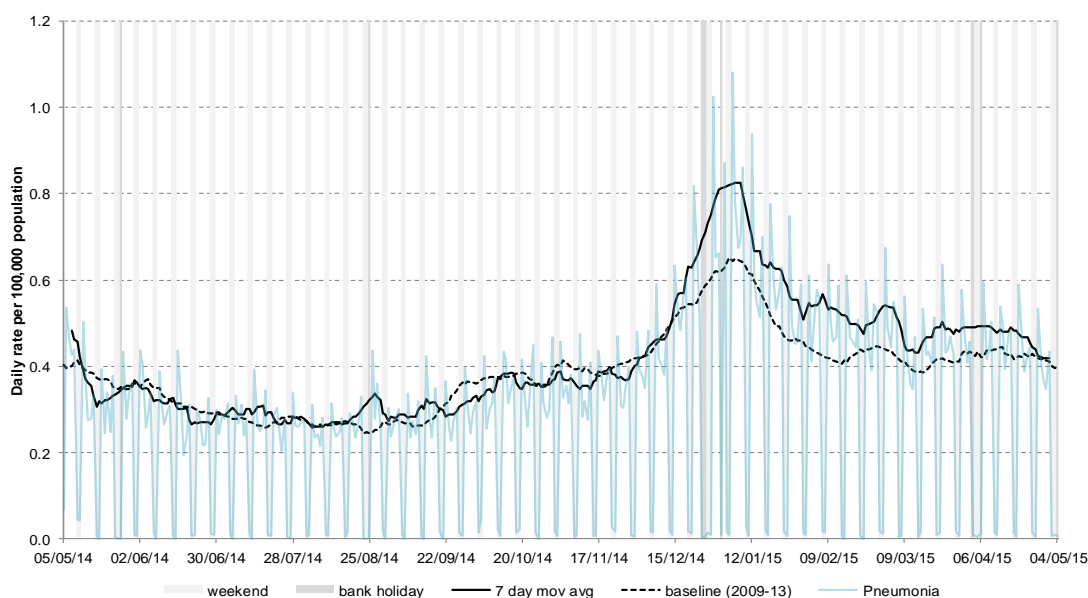
6: Lower respiratory tract infection (LRTI)

Daily incidence rate (and 7-day moving average*) per 100,000 population (all England, all ages).



7: Pneumonia

Daily incidence rate (and 7-day moving average*) per 100,000 population (all England, all ages).



8: Intentionally left blank

Intentionally left blank.

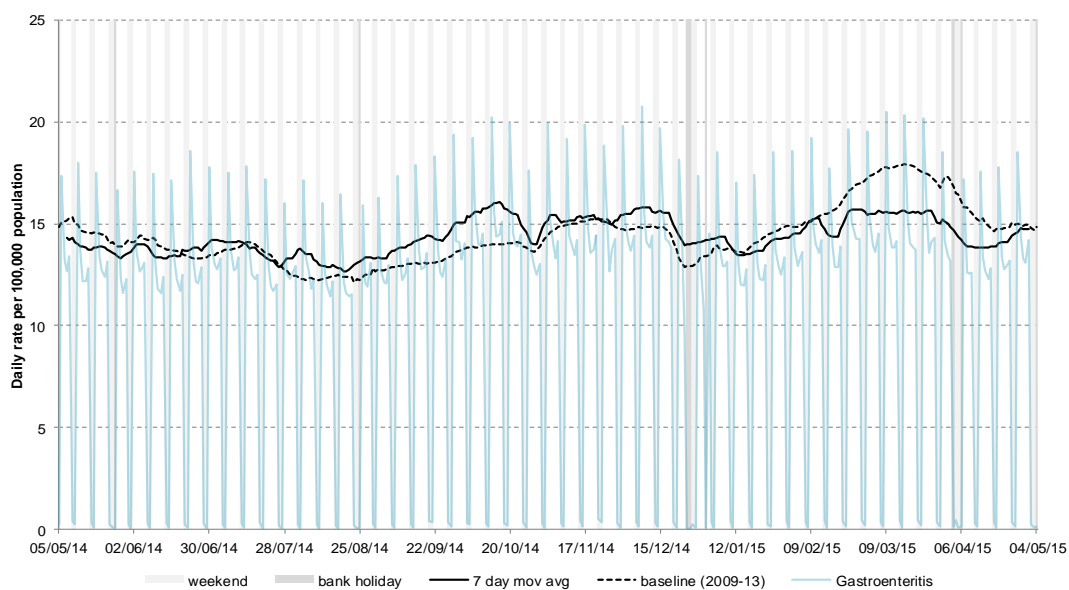
* 7-day moving average adjusted for bank holidays.

06 May 2015

Year: 2015 Week: 18

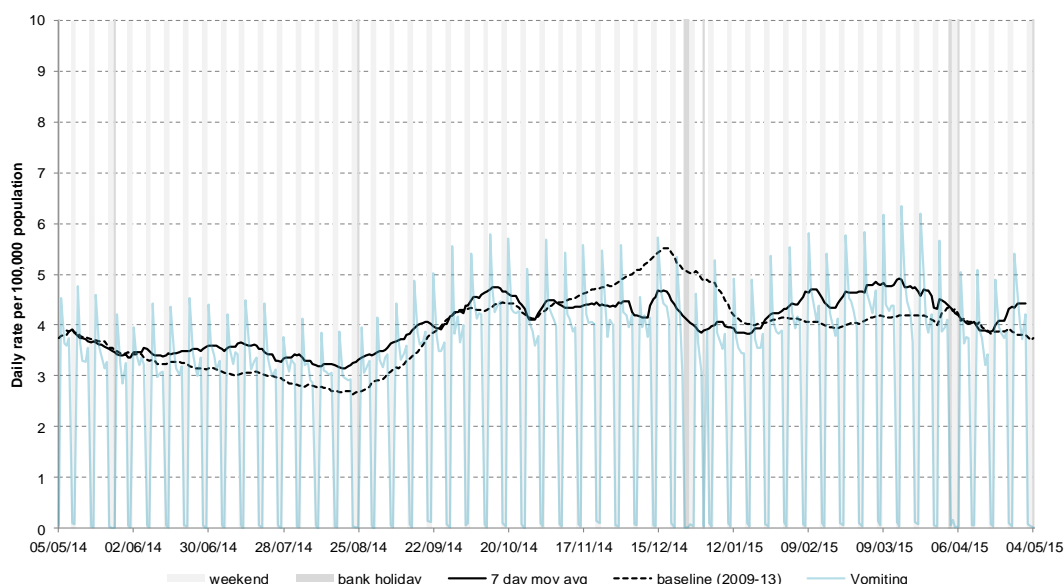
9: Gastroenteritis

Daily incidence rate (and 7-day moving average*) per 100,000 population (all England, all ages).



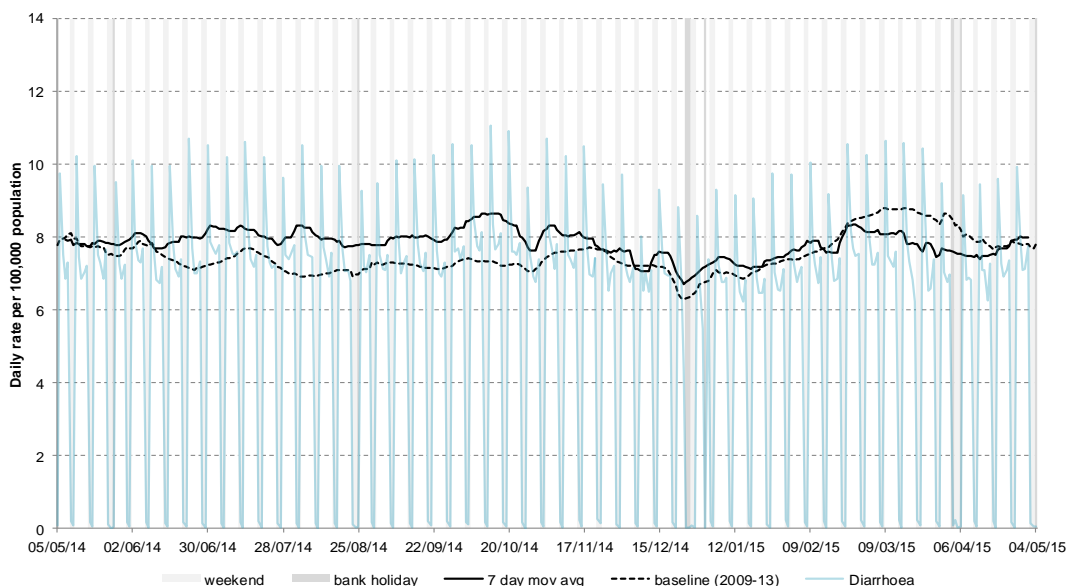
10: Vomiting

Daily incidence rate (and 7-day moving average*) per 100,000 population (all England, all ages).



11: Diarrhoea

Daily incidence rate (and 7-day moving average*) per 100,000 population (all England, all ages).



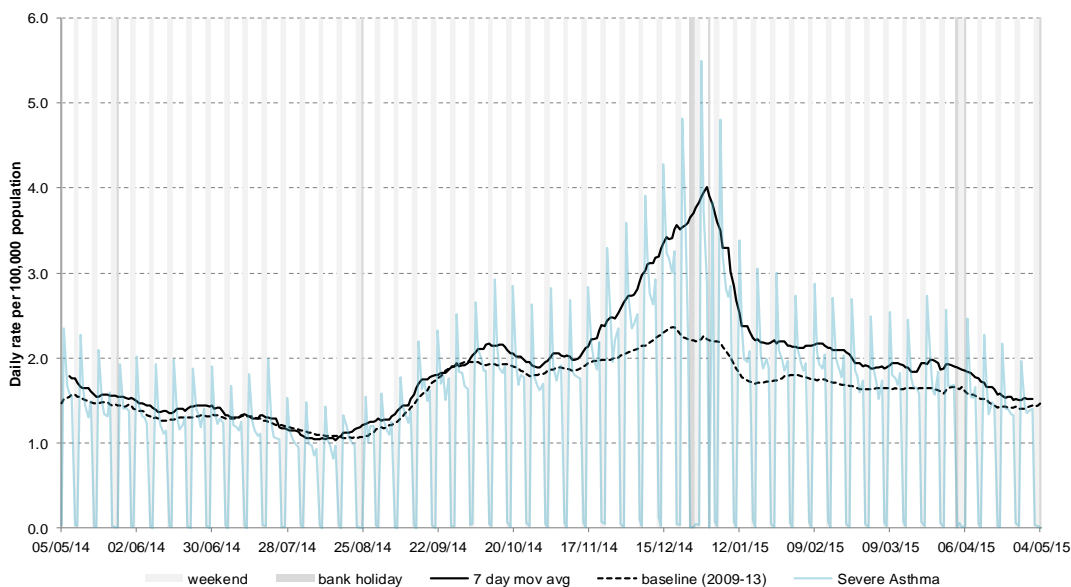
* 7-day moving average adjusted for bank holidays.

06 May 2015

Year: 2015 Week: 18

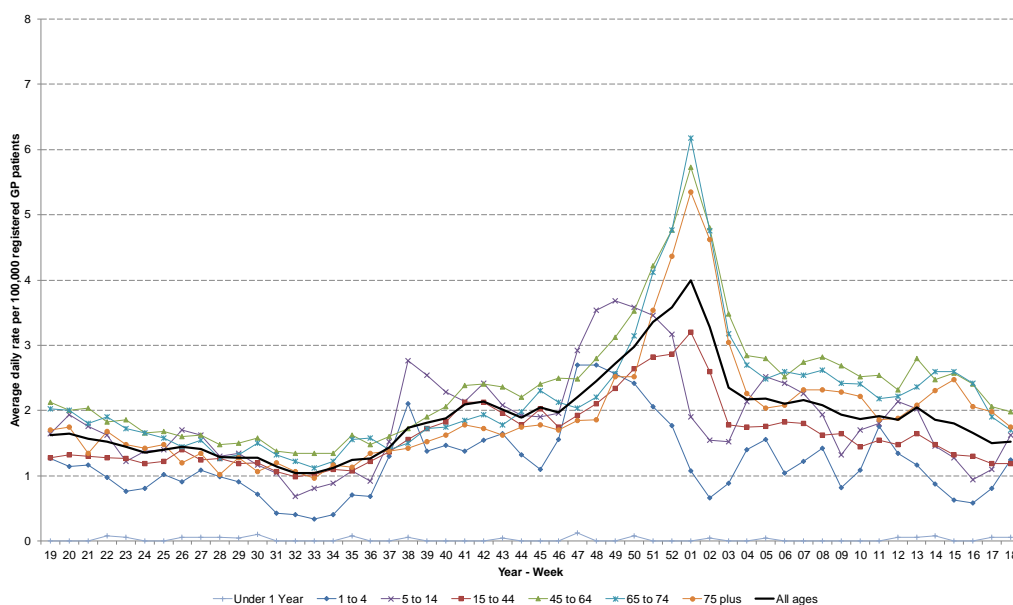
12: Severe asthma

Daily incidence rate (and 7-day moving average*) per 100,000 population (all England, all ages).



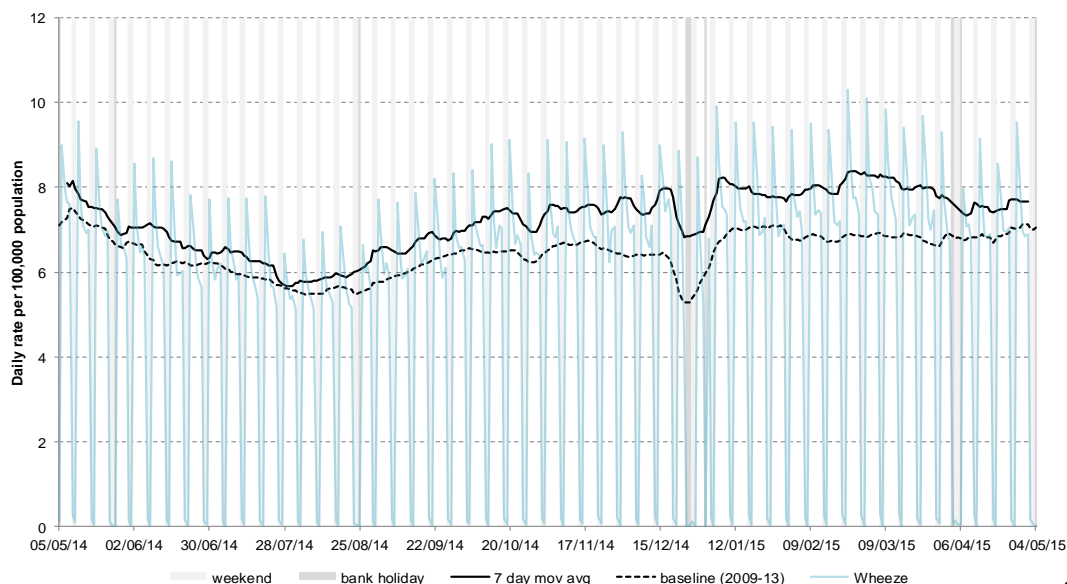
12a: Severe asthma by age

Average daily incidence rate by week per 100,000 population (all England)



13: Wheeze

Daily incidence rate (and 7-day moving average*) per 100,000 population (all England, all ages).



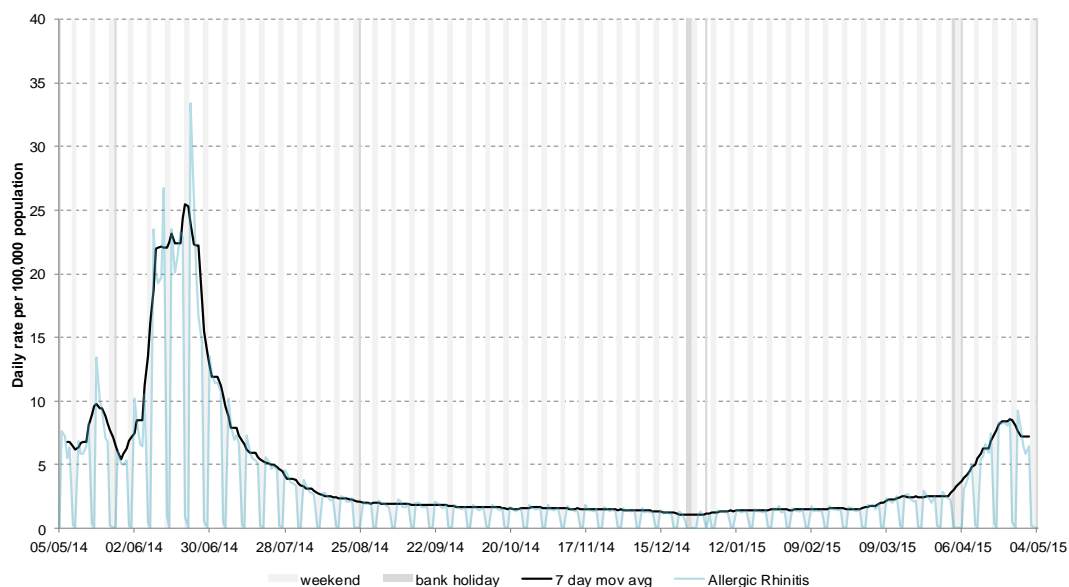
* 7-day moving average adjusted for bank holidays.

06 May 2015

Year: 2015 Week: 18

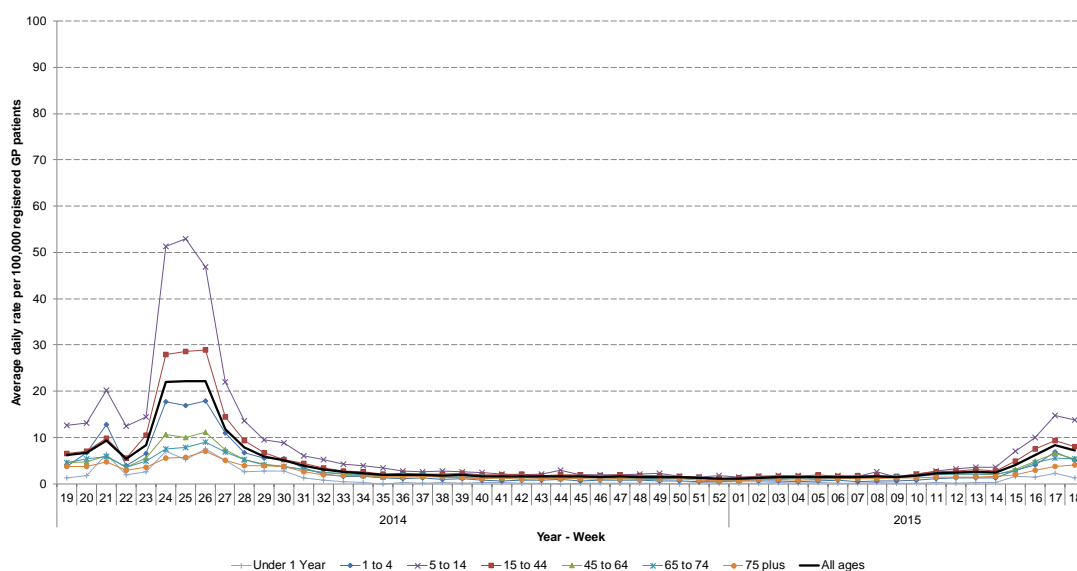
14: Allergic rhinitis

Daily incidence rate (and 7-day moving average*) per 100,000 population (all England, all ages).



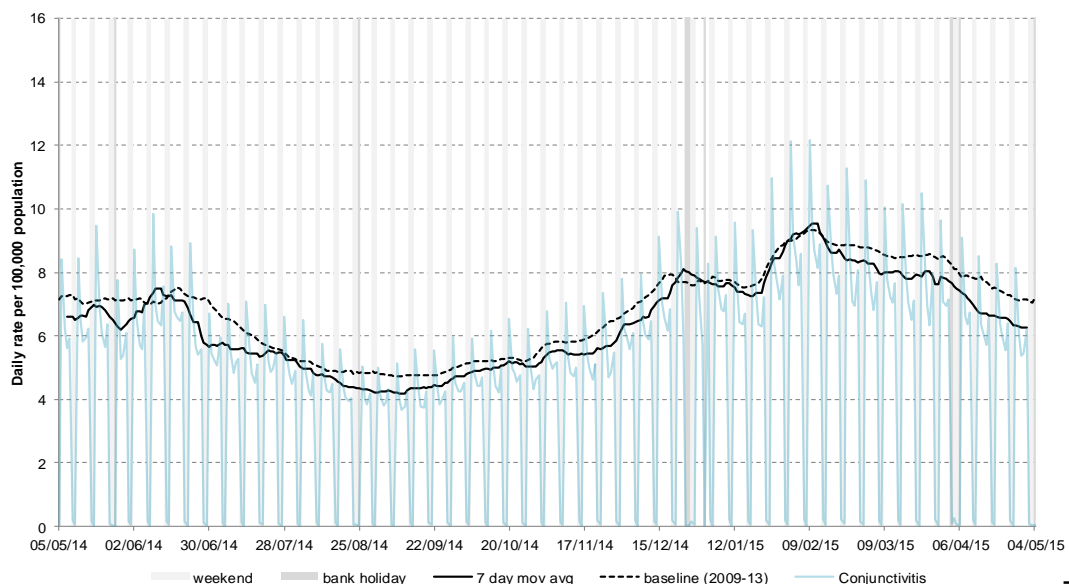
14a: Allergic rhinitis by age

Average daily incidence rate by week per 100,000 population (all England)



15: Conjunctivitis

Daily incidence rate (and 7-day moving average*) per 100,000 population (all England, all ages).



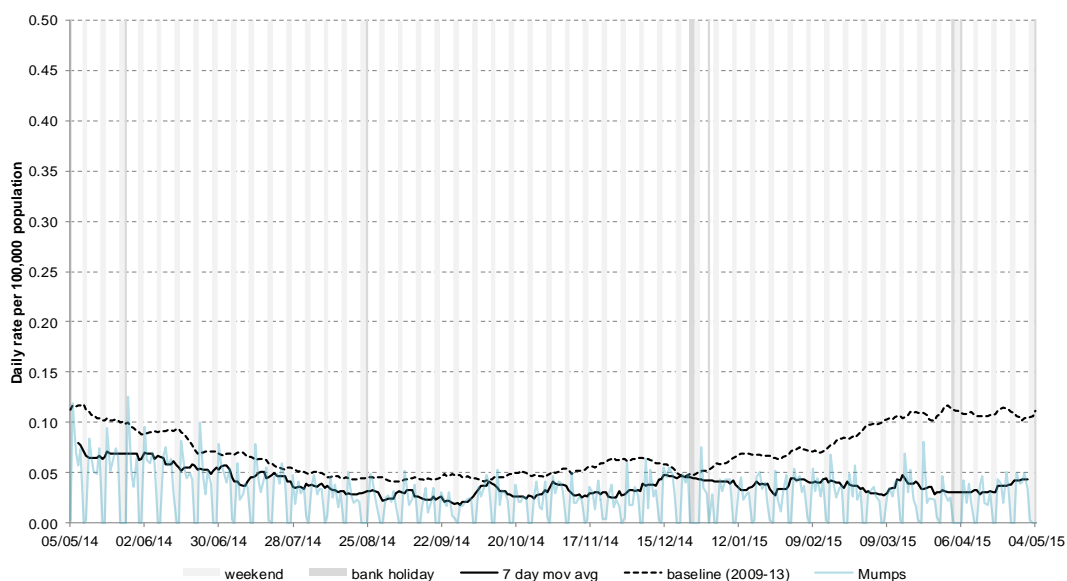
* 7-day moving average adjusted for bank holidays.

06 May 2015

Year: 2015 Week: 18

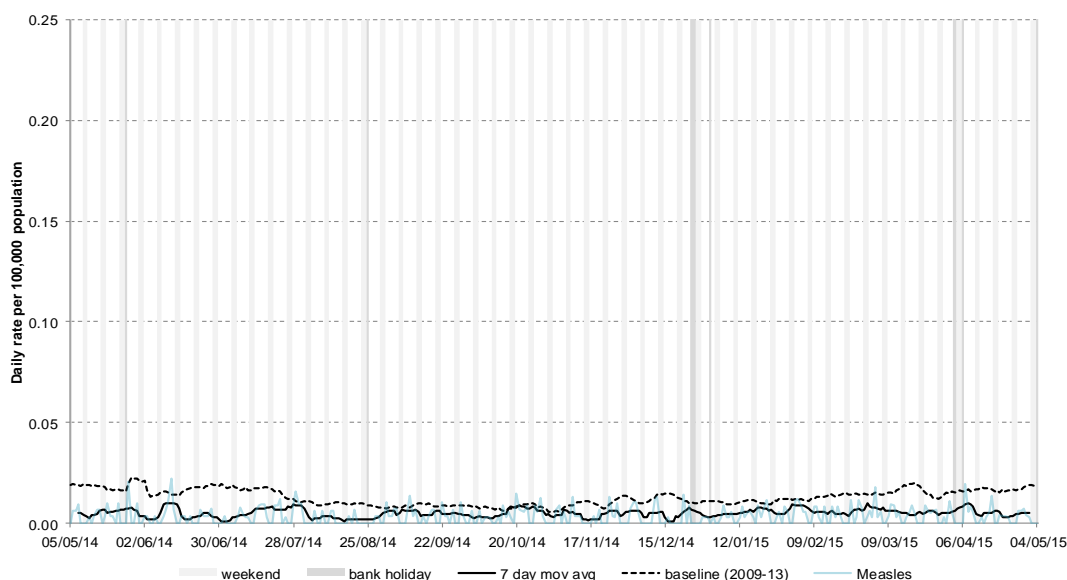
16: Mumps

Daily incidence rate (and 7-day moving average*) per 100,000 population (all England, all ages).



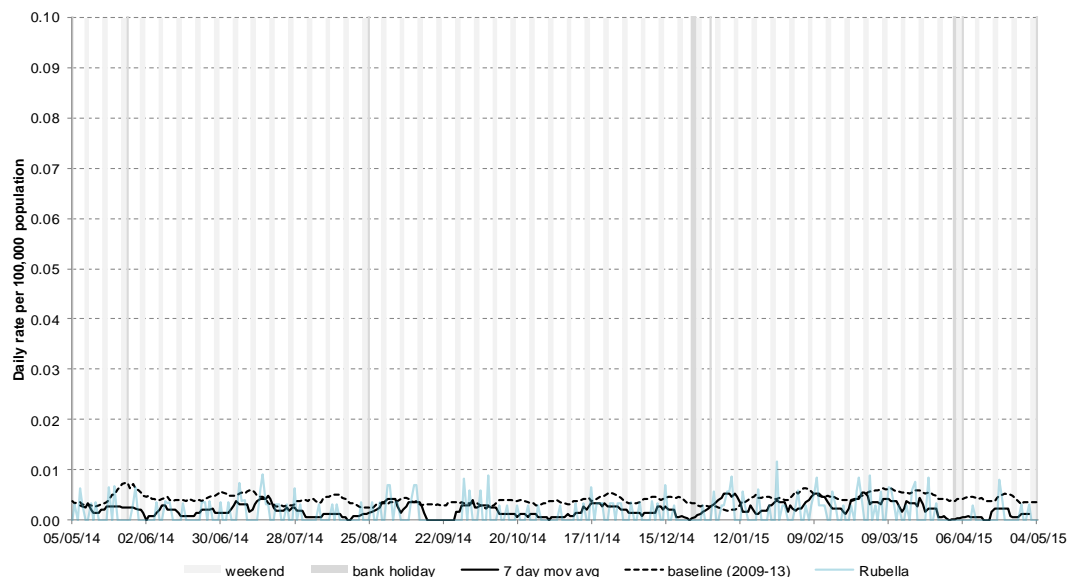
17: Measles

Daily incidence rate (and 7-day moving average*) per 100,000 population (all England, all ages).



18: Rubella

Daily incidence rate (and 7-day moving average*) per 100,000 population (all England, all ages).



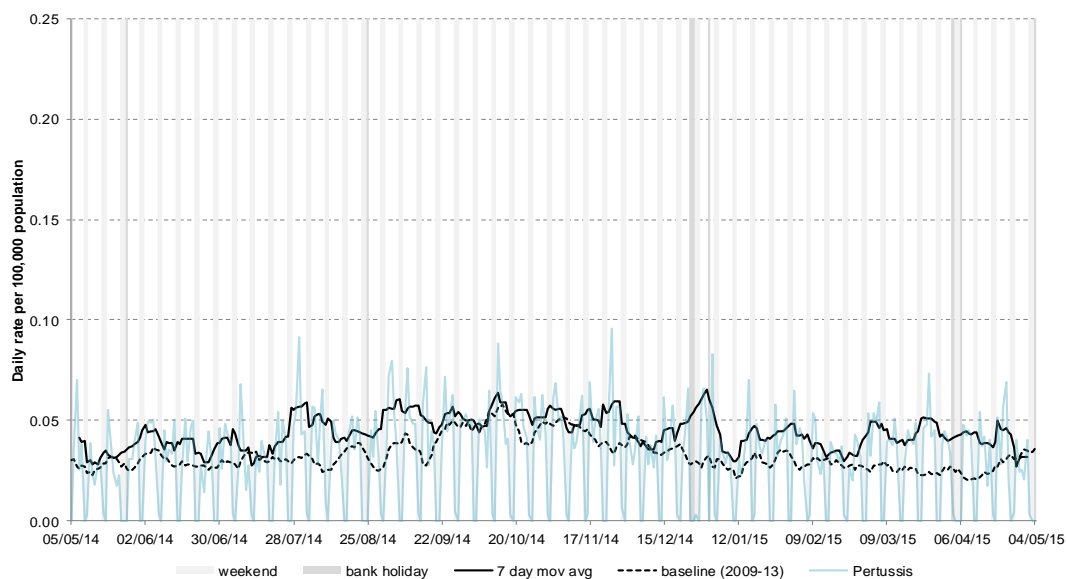
* 7-day moving average adjusted for bank holidays.

06 May 2015

Year: 2015 Week: 18

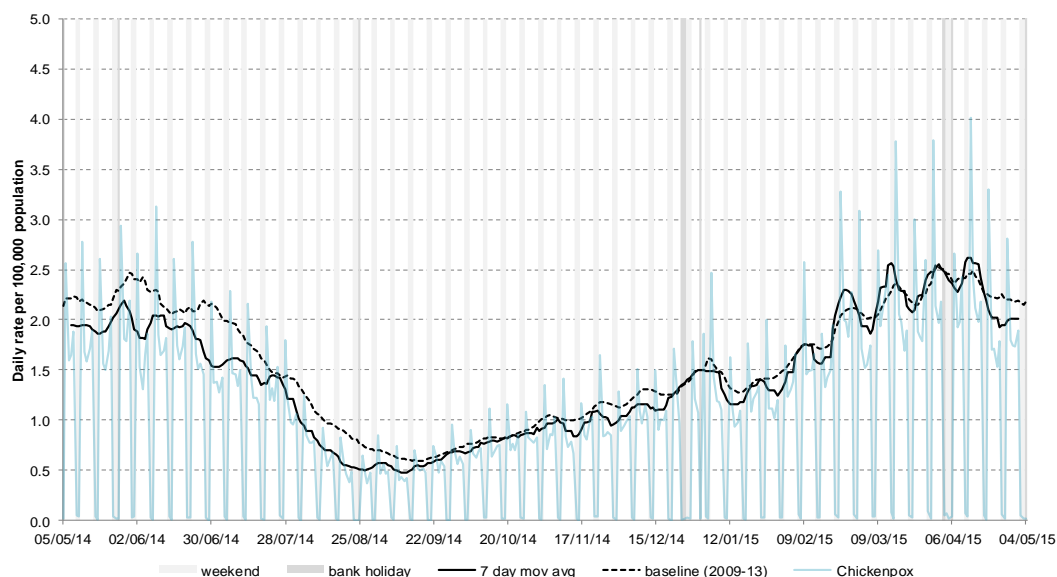
19: Pertussis

Daily incidence rate (and 7-day moving average*) per 100,000 population (all England, all ages).



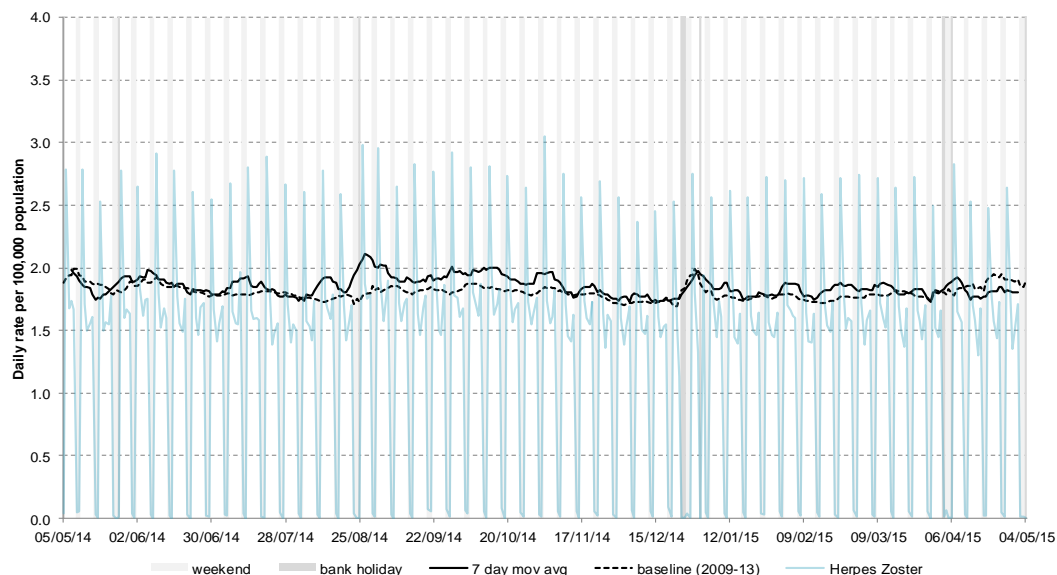
20: Chickenpox

Daily incidence rate (and 7-day moving average*) per 100,000 population (all England, all ages).



21: Herpes zoster

Daily incidence rate (and 7-day moving average*) per 100,000 population (all England, all ages).



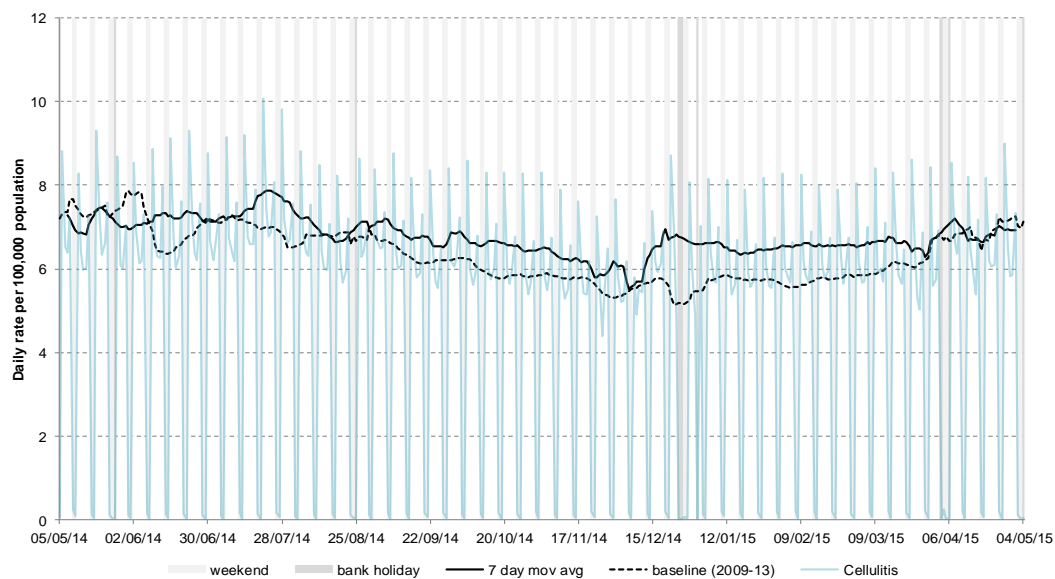
* 7-day moving average adjusted for bank holidays.

06 May 2015

Year: 2015 Week: 18

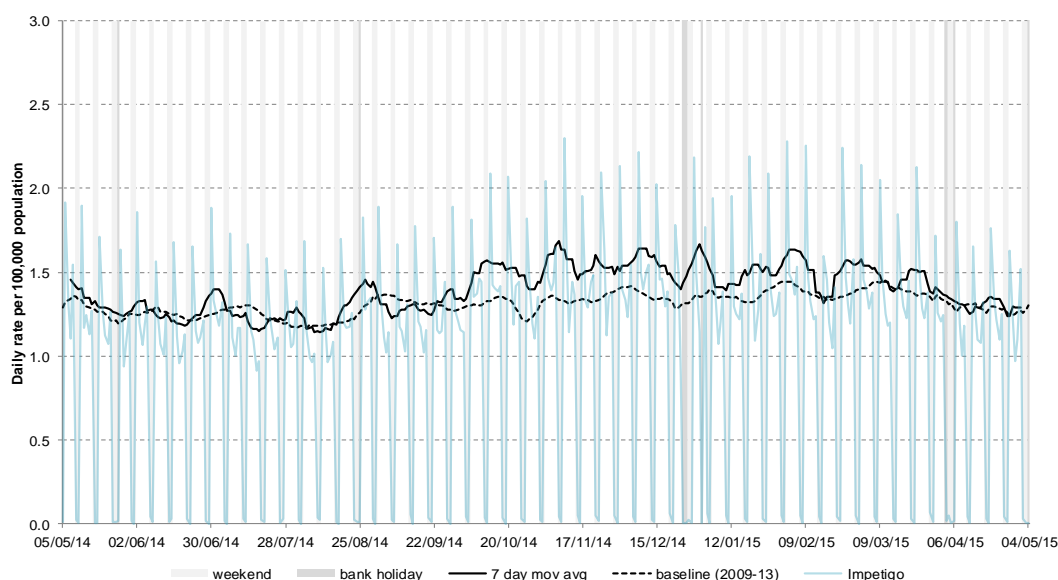
22: Cellulitis

Daily incidence rate (and 7-day moving average*) per 100,000 population (all England, all ages).



23: Impetigo

Daily incidence rate (and 7-day moving average*) per 100,000 population (all England, all ages).



24: Intentionally left blank

Intentionally left blank.

* 7-day moving average adjusted for bank holidays.

Notes and further information

- The Public Health England GP in hours surveillance system is a syndromic surveillance system monitoring community-based morbidity recorded by GP practices.
- GP consultation data are analysed on a daily basis to identify national and regional trends. A statistical algorithm underpins each system, routinely identifying activity that has increased significantly or is statistically significantly high for the time of year. Results from these daily analyses are assessed by the ReSST, along with analysis by age group, and anything deemed of public health importance is alerted by the team.
- This system captures anonymised GP morbidity data from two GP clinical software systems, EMIS, from version 1 of the QSurveillance® database, and TPP SystemOne.
- Historic baselines are smoothed to remove bank holiday effects. Data from 2009 has been excluded for selected indicators which were affected by the H1N1 influenza pandemic. No baseline is currently included for allergic rhinitis.
- The appendix illustrates weekly GP in hours consultation data for influenza-like illness (ILI). Each PHE Centre is represented by a thematic map showing its constituent local authorities (LA) coloured according to the weekly consultation rate of ILI per 100,000 population. LAs where less than 5 cases of ILI have been reported are suppressed and illustrated as no data.
- The maps on the following pages contains Ordnance Survey data © Crown copyright and database right 2014. Contains National Statistics data © Crown copyright and database right 2014.

Acknowledgements:

We thank and acknowledge the University of Nottingham, ClinRisk® and the contribution of EMIS and EMIS practices. Data source: version 1 of the QSurveillance® database.

We thank TPP, ResearchOne and the SystemOne GP practices contributing to this surveillance system.

GP In Hours Syndromic Surveillance System Bulletin.

Produced by: PHE Real-time Syndromic Surveillance Team
6th Floor, 5 St Philip's Place, Birmingham, B3 2PW

Tel: 0344 225 3560 > Option 4 > Option 2 **Fax:** 0121 236 2215

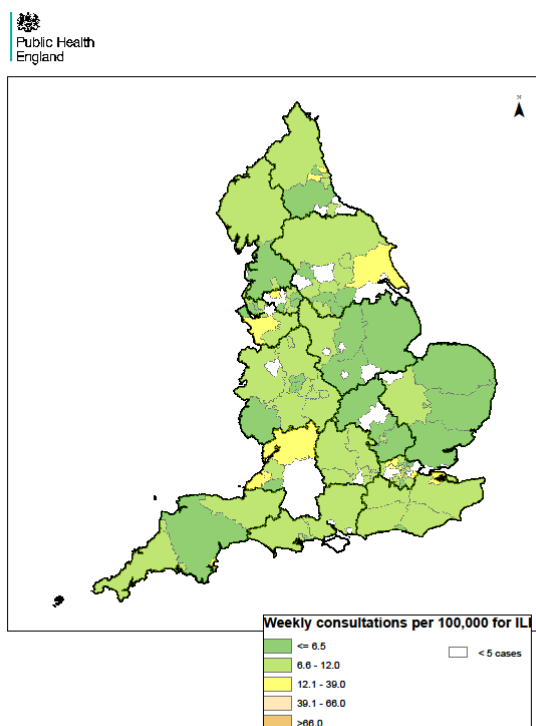
Web: <https://www.gov.uk/government/collections/syndromic-surveillance-systems-and-analyses>

Contact ReSST:
syndromic-surveillance
@phe.gov.uk

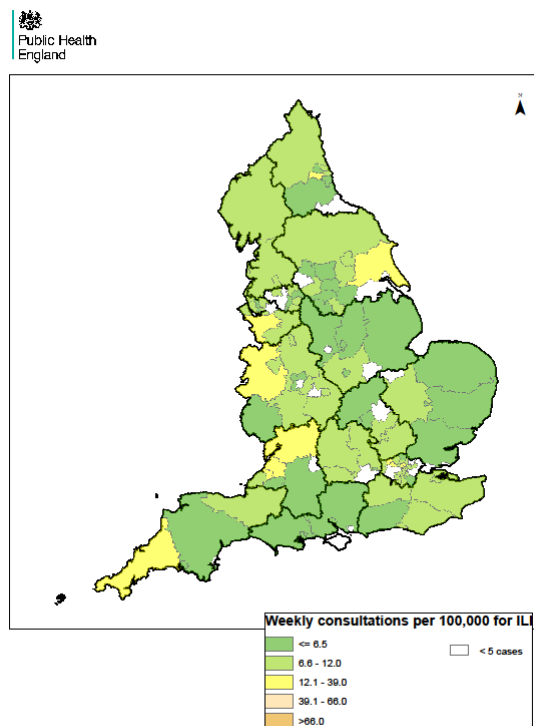
England

Weekly ILI
consultation
rate by LA
for England

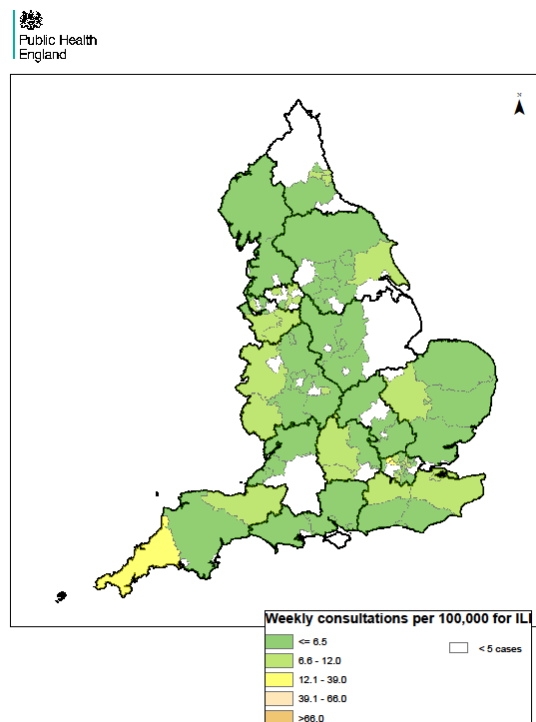
Week 15



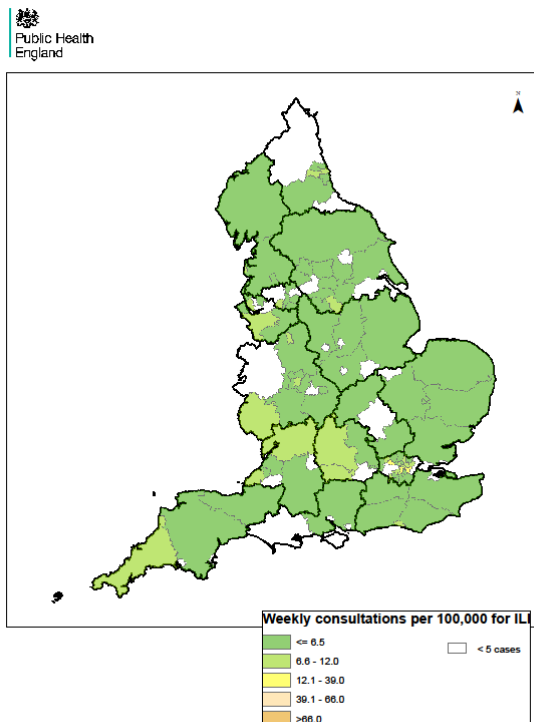
Week 16



Week 17



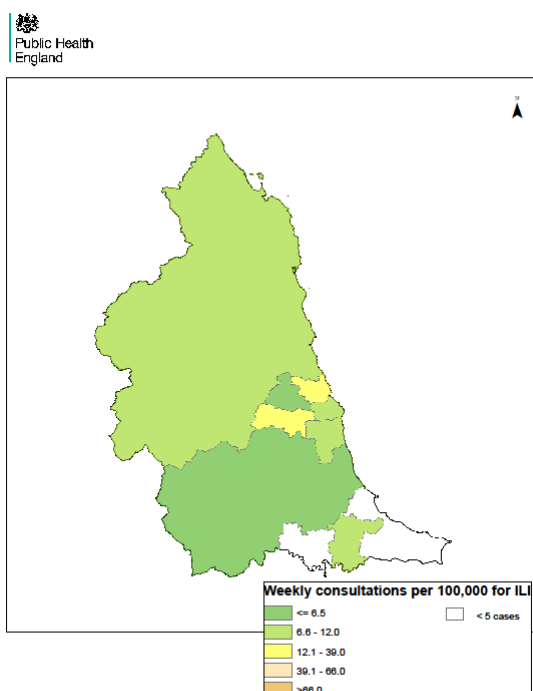
Week 18



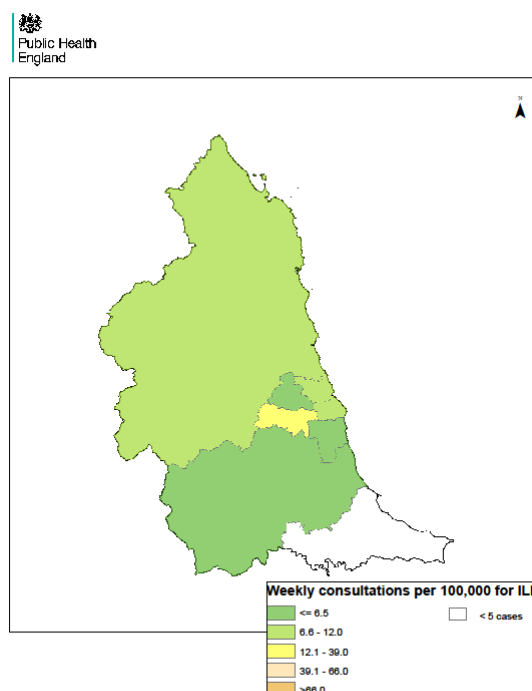
North East

Weekly ILI
consultation
rate by LA
for North
East PHE
Centre

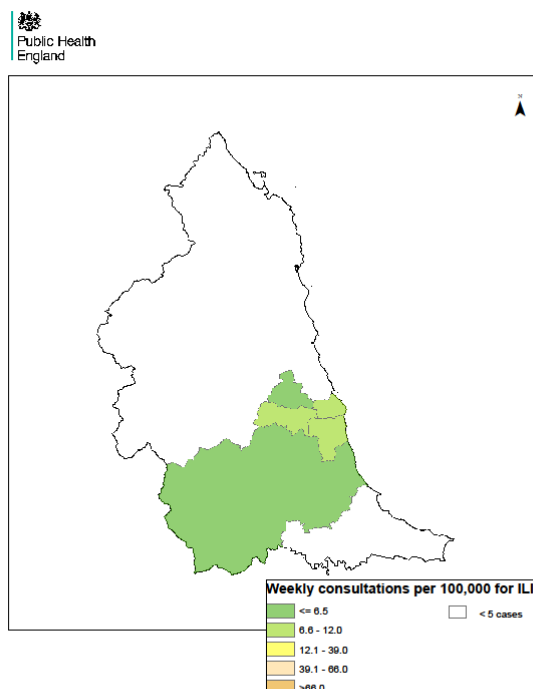
Week 15



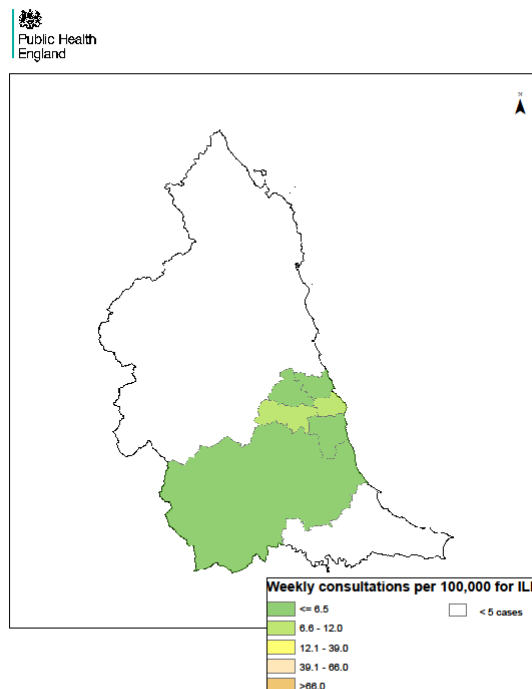
Week 16



Week 17



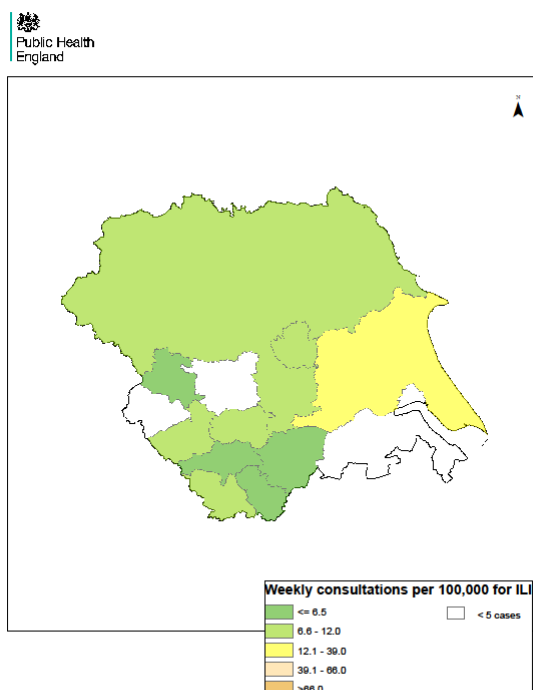
Week 18



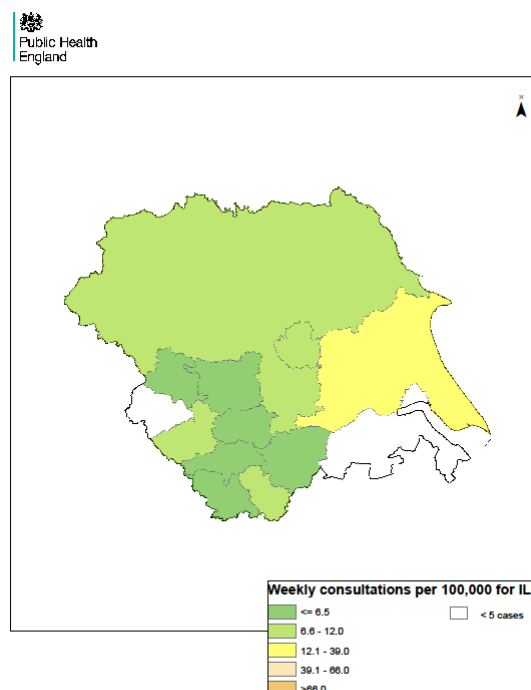
Yorkshire & Humber

Weekly ILI consultation rate by LA for Yorkshire & Humber PHE Centre

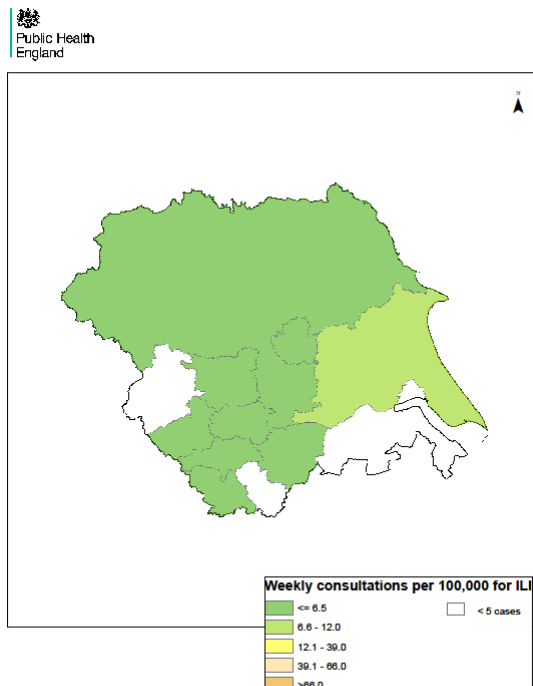
Week 15



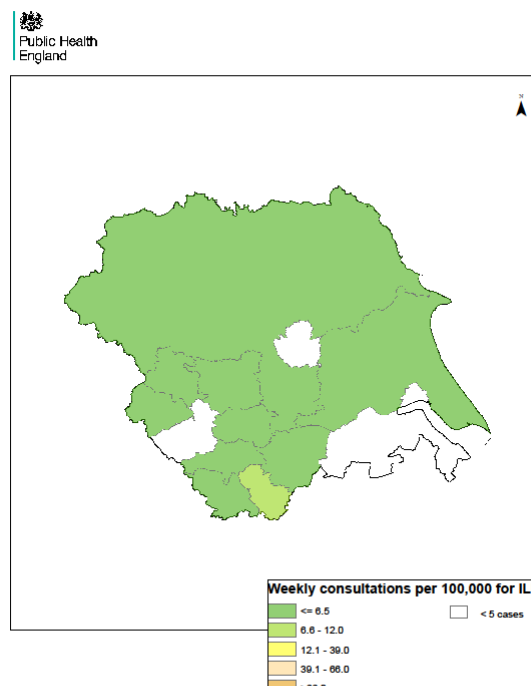
Week 16



Week 17



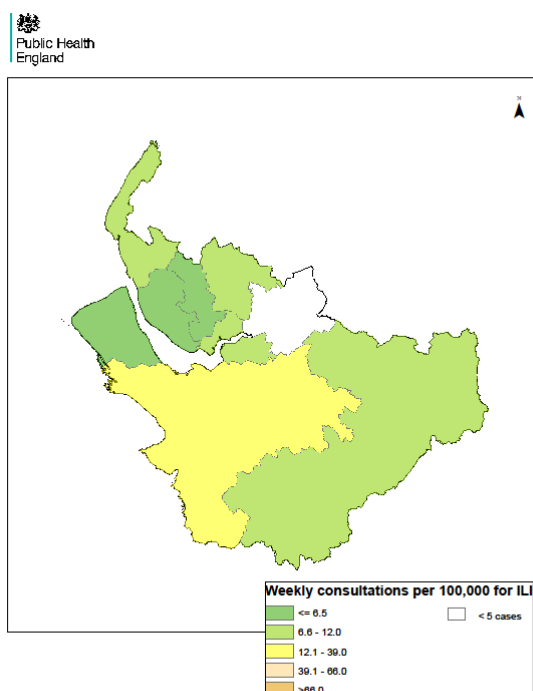
Week 18



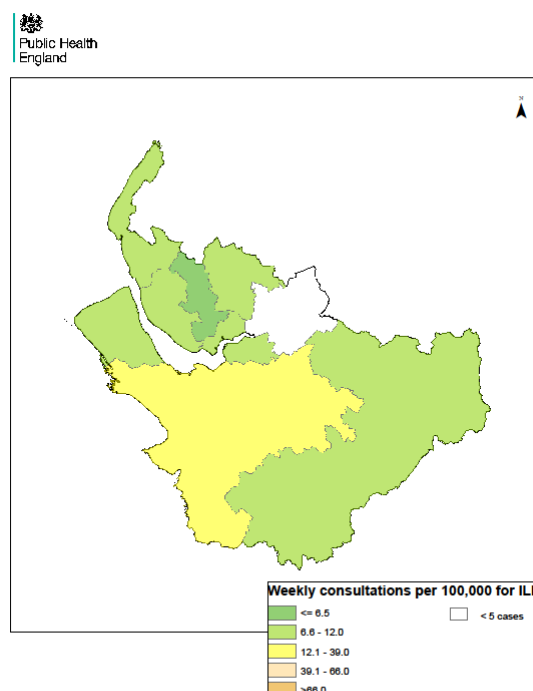
Cheshire & Merseyside

Weekly ILI consultation rate by LA for Cheshire & Merseyside PHE Centre

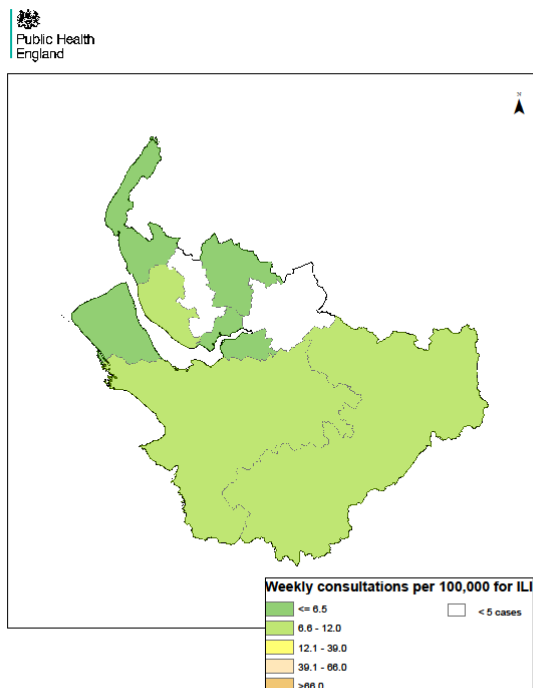
Week 15



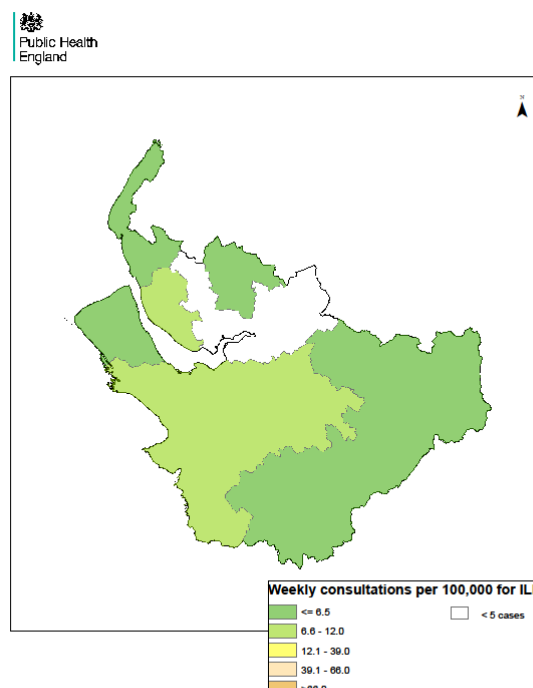
Week 16



Week 17



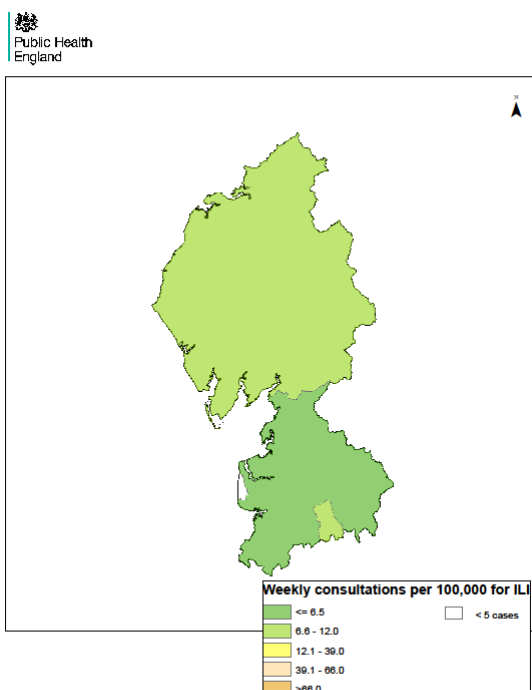
Week 18



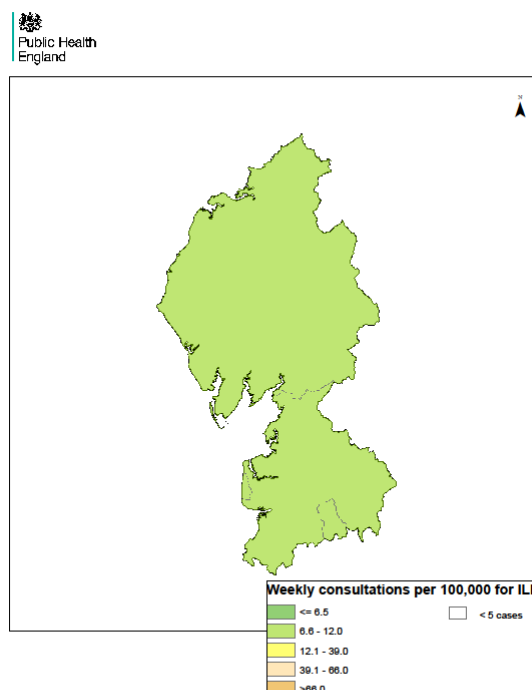
Cumbria & Lancashire

Weekly ILI consultation rate by LA for Cumbria & Lancashire PHE Centre

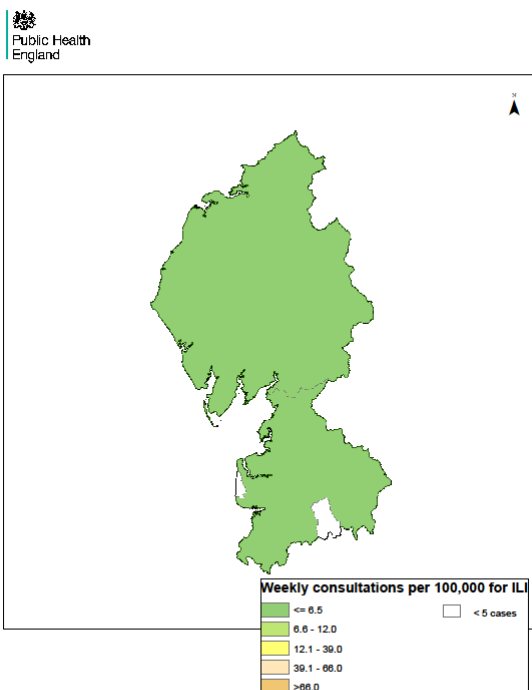
Week 15



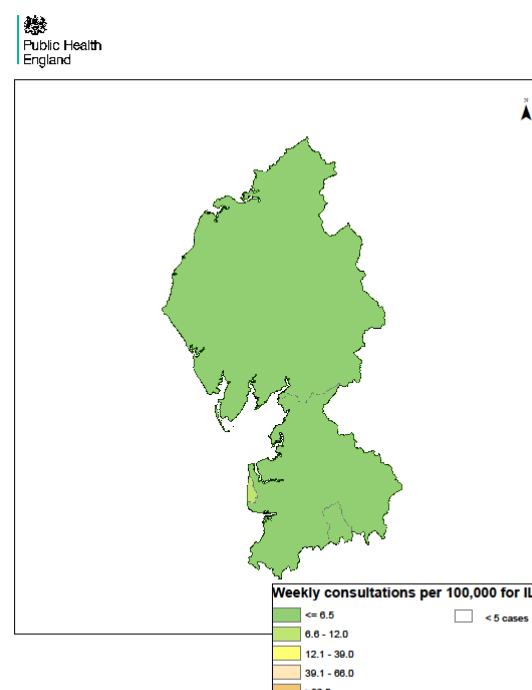
Week 16



Week 17



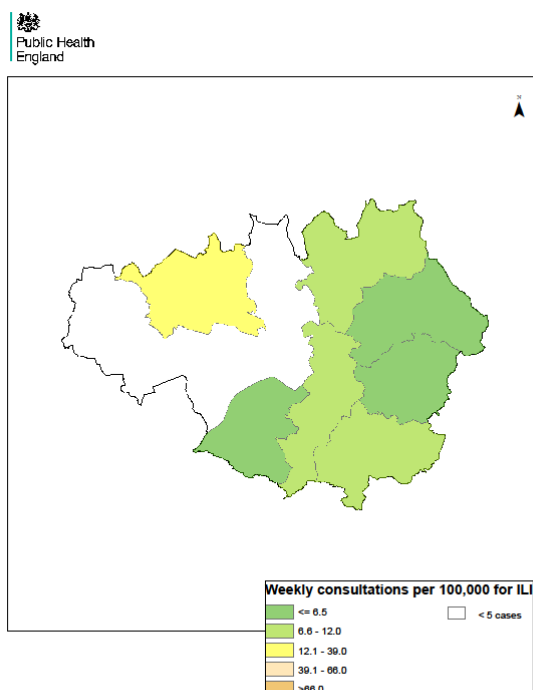
Week 18



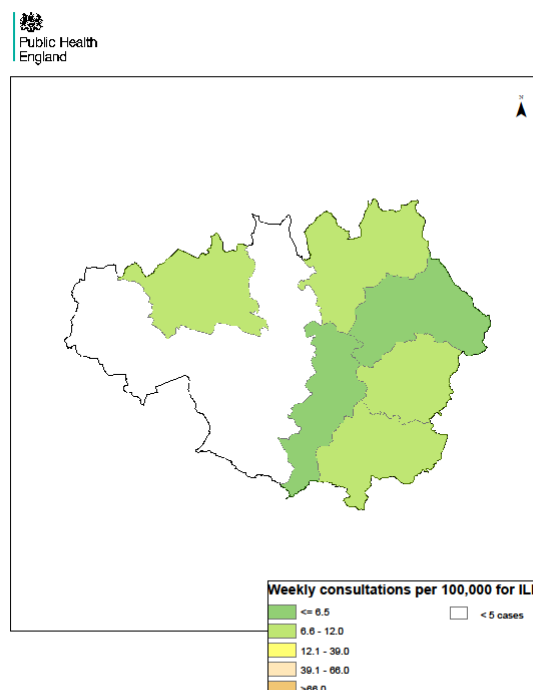
Greater Manchester

Weekly ILI consultation rate by LA for Greater Manchester PHE Centre

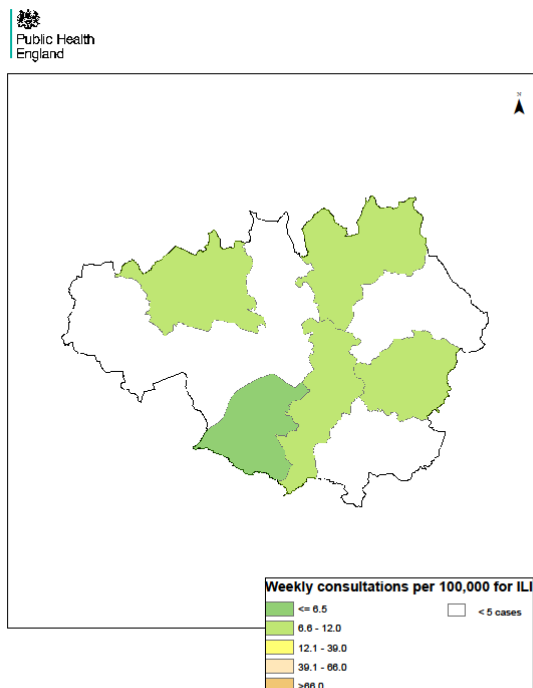
Week 15



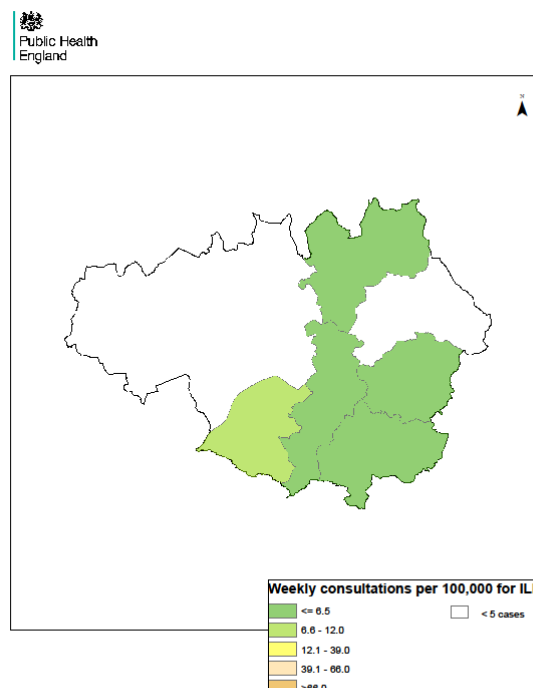
Week 16



Week 17



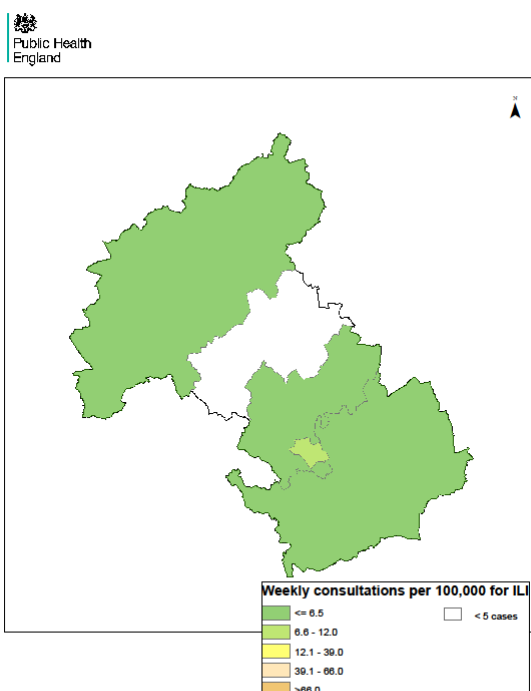
Week 18



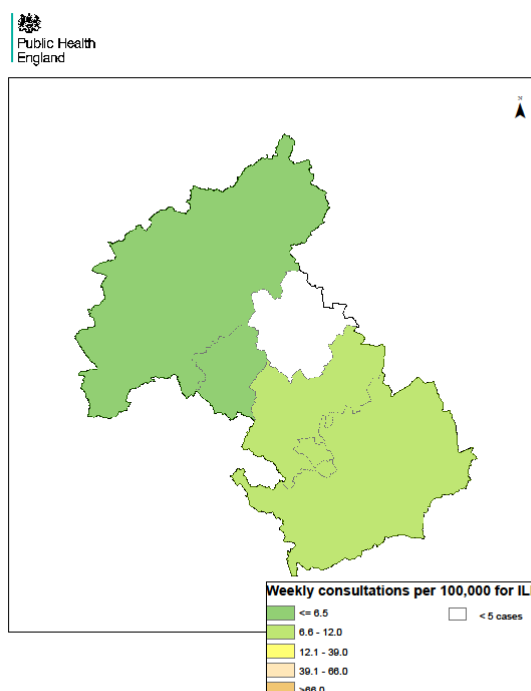
**South
Midlands &
Hertfordshire**

Weekly ILI
consultation
rate by LA
for South
Midlands &
Hertfordshire
PHE Centre

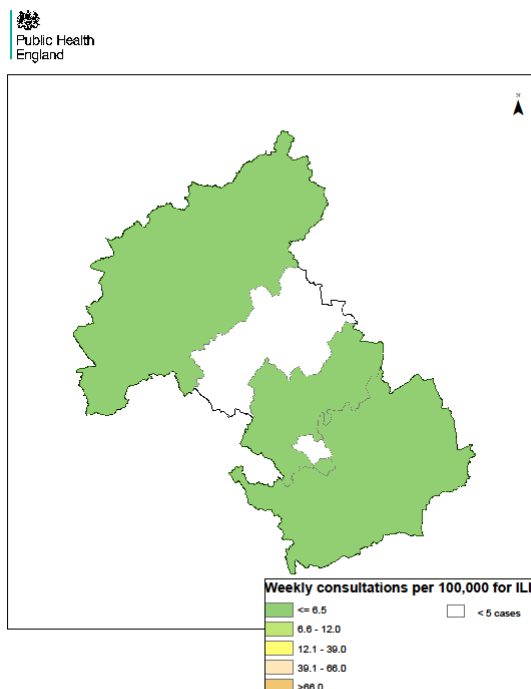
Week 15



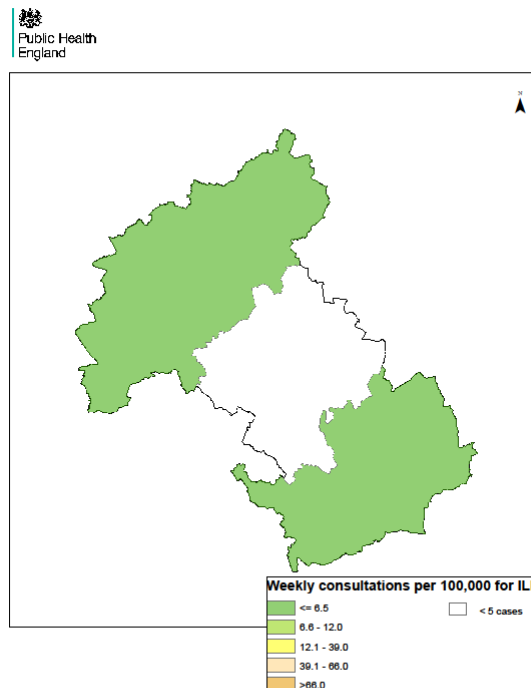
Week 16



Week 17



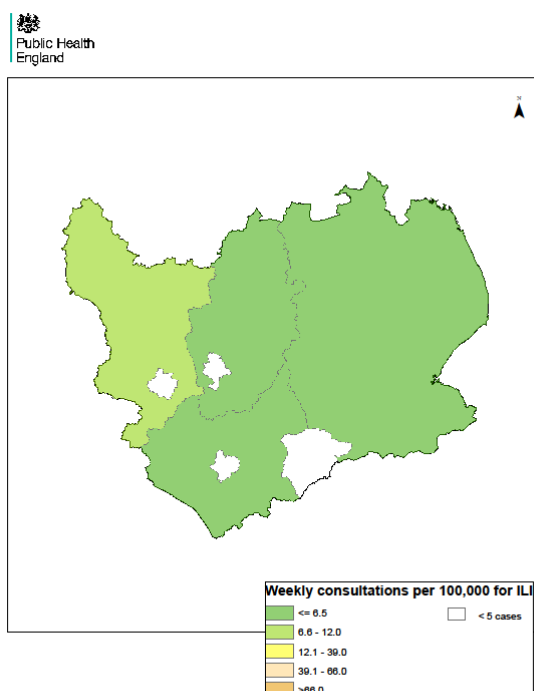
Week 18



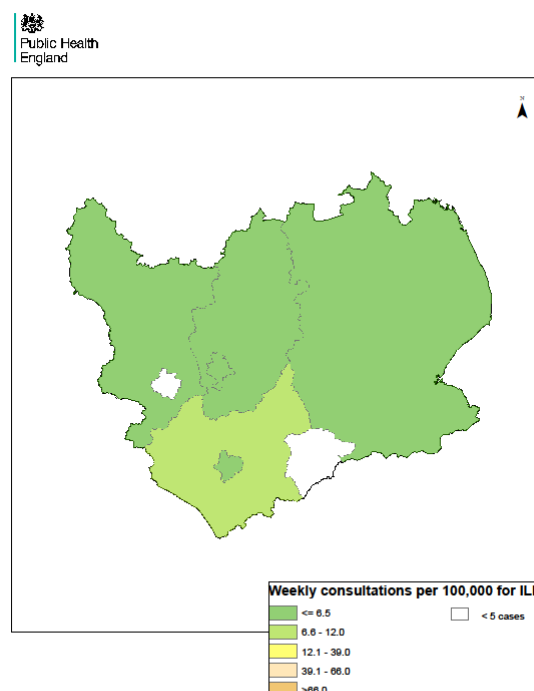
**East
Midlands**

Weekly ILI
consultation
rate by LA
for East
Midlands
PHE Centre

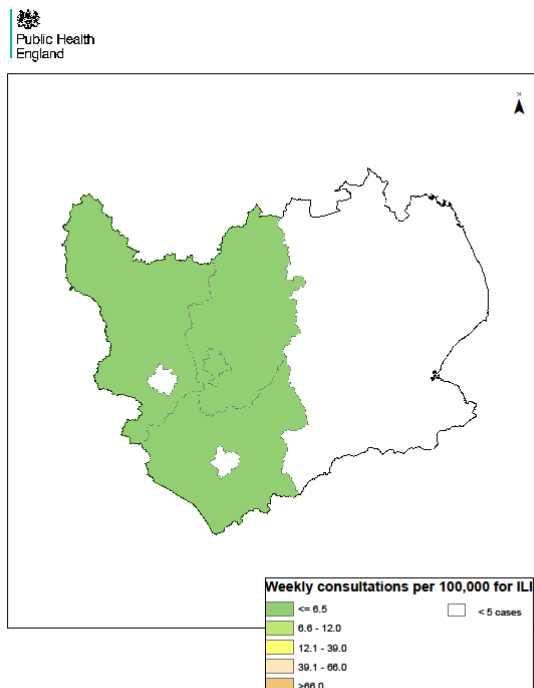
Week 15



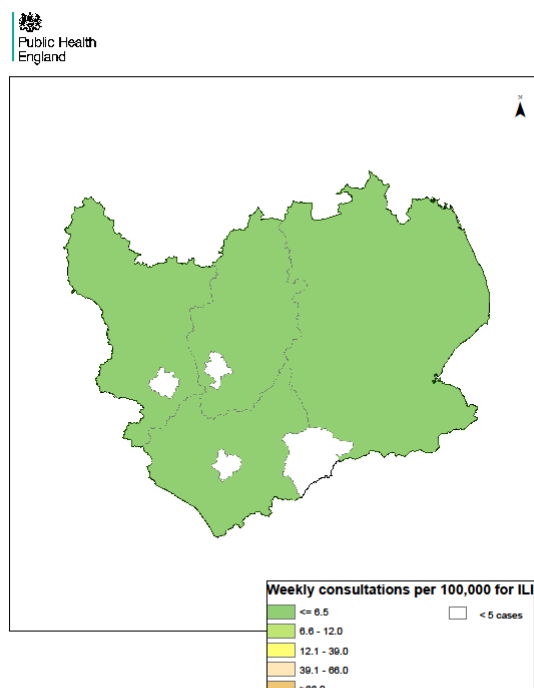
Week 16



Week 17



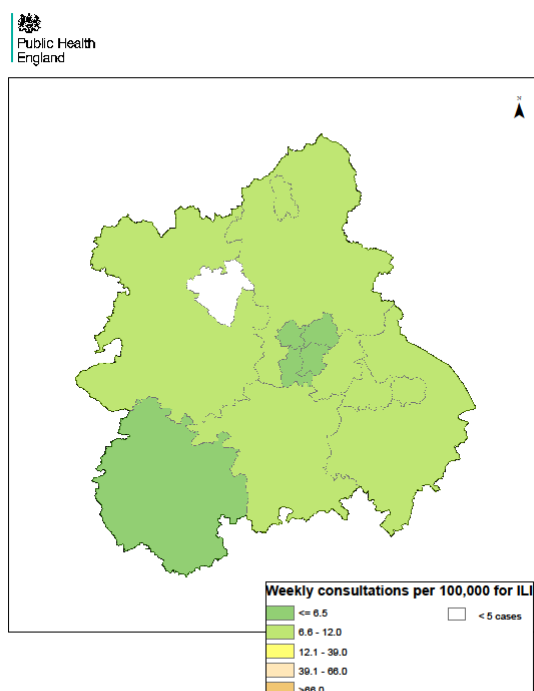
Week 18



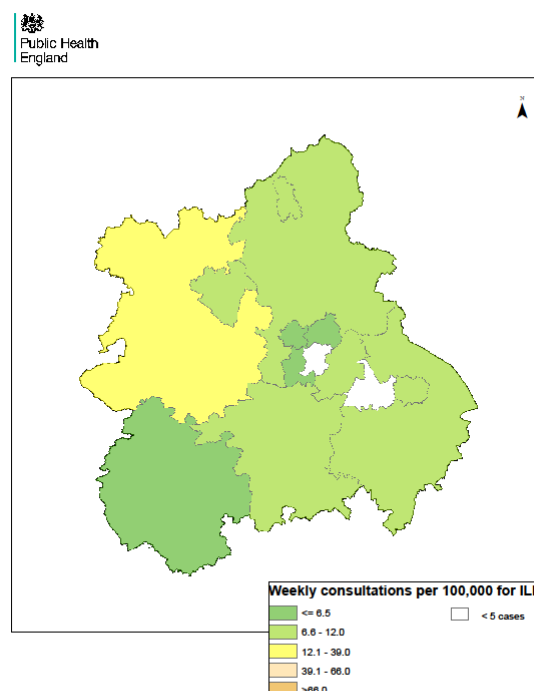
**West
Midlands**

Weekly ILI
consultation
rate by LA
for West
Midlands
PHE Centre

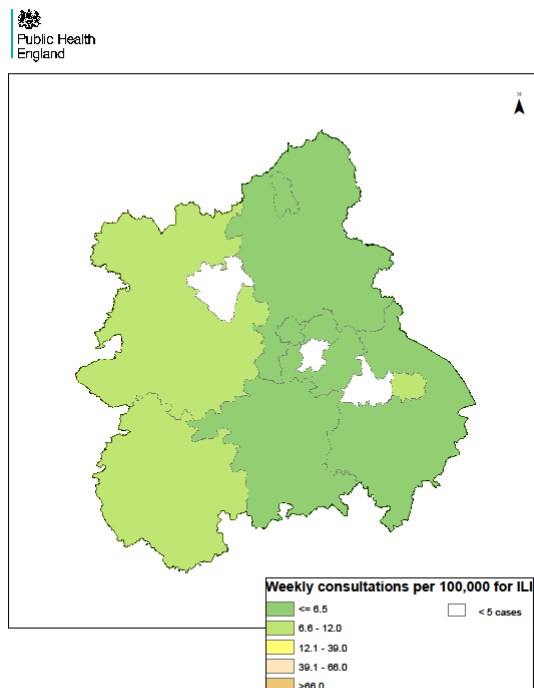
Week 15



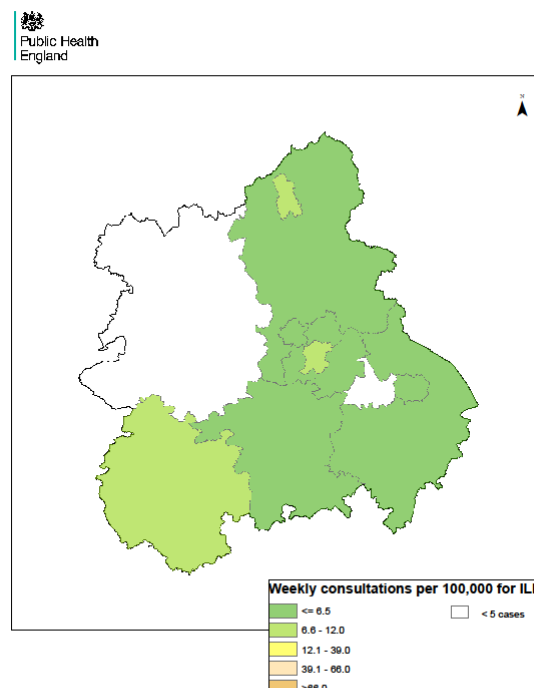
Week 16



Week 17



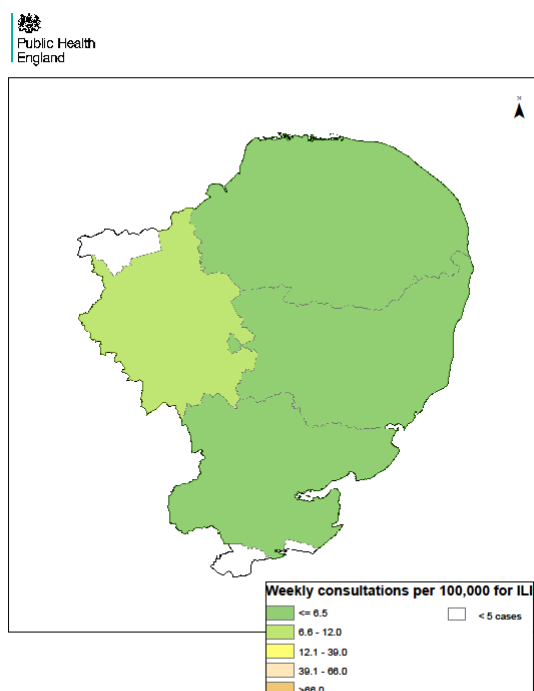
Week 18



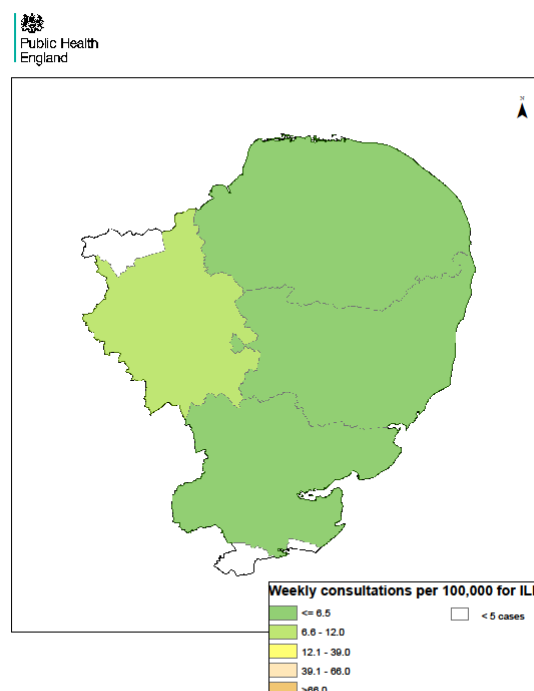
Anglia & Essex

Weekly ILI consultation rate by LA for Anglia & Essex PHE Centre

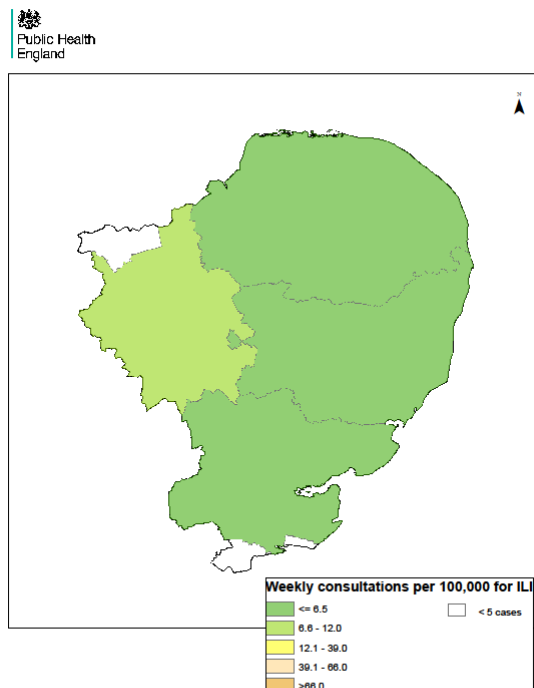
Week 15



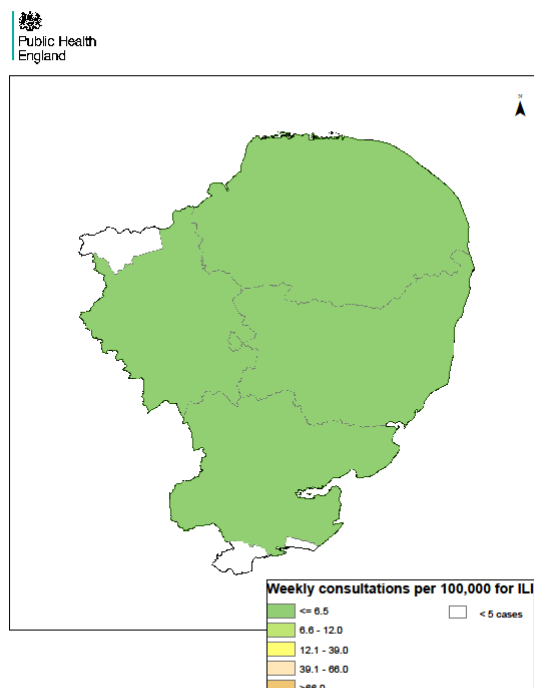
Week 16



Week 17



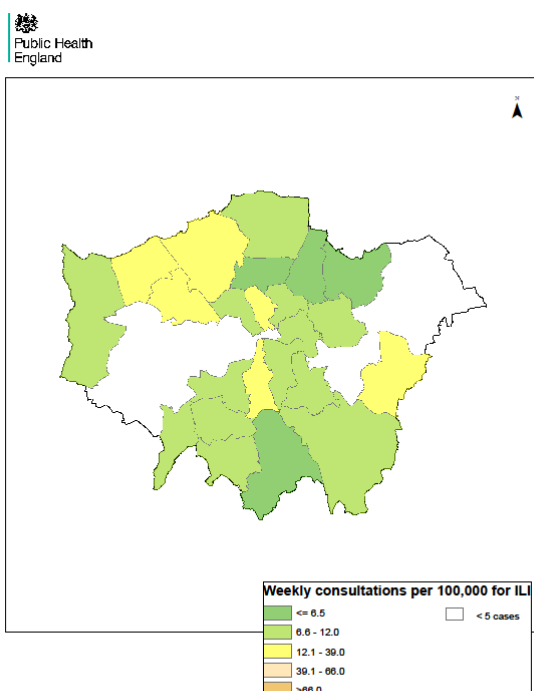
Week 18



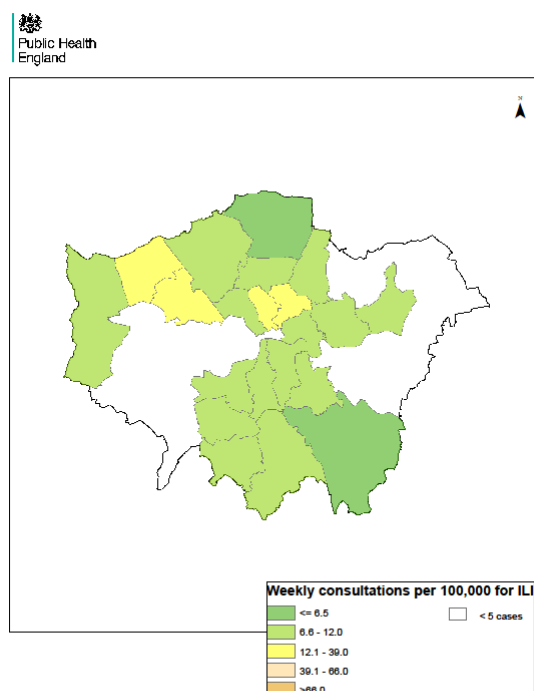
London

Weekly ILI
consultation
rate by LA
for London
PHE Centre

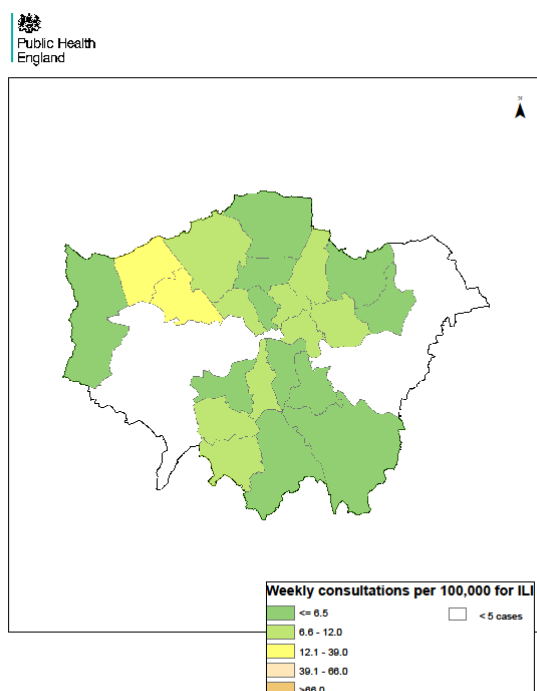
Week 15



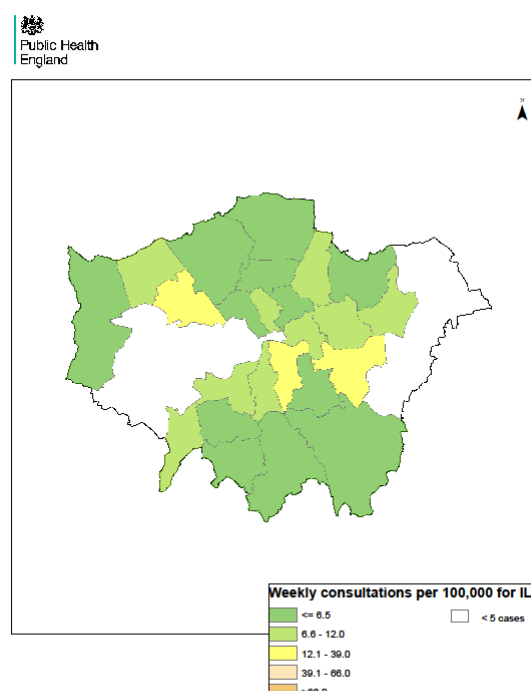
Week 16



Week 17



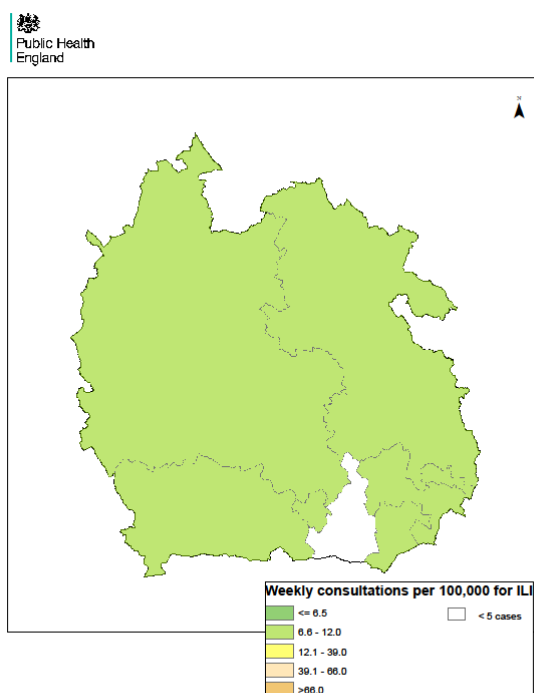
Week 18



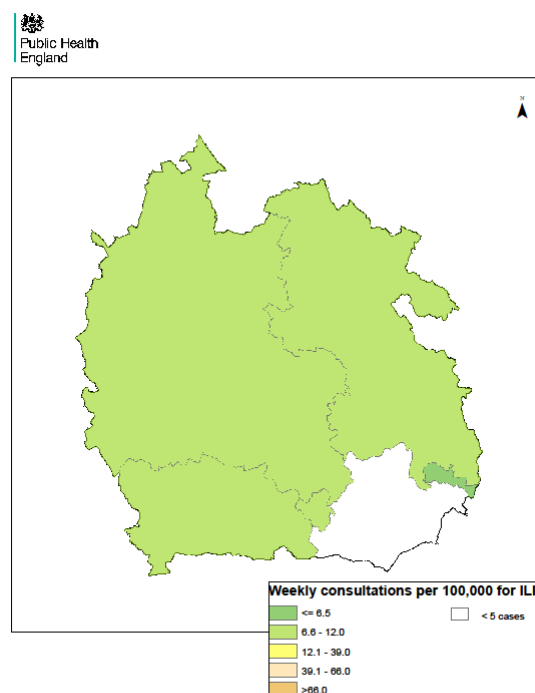
Thames Valley

Weekly ILI
consultation
rate by LA
for Thames
Valley PHE
Centre

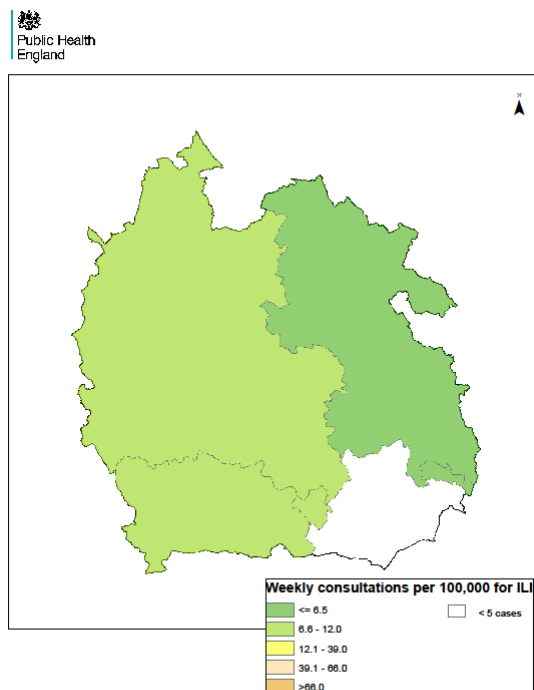
Week 15



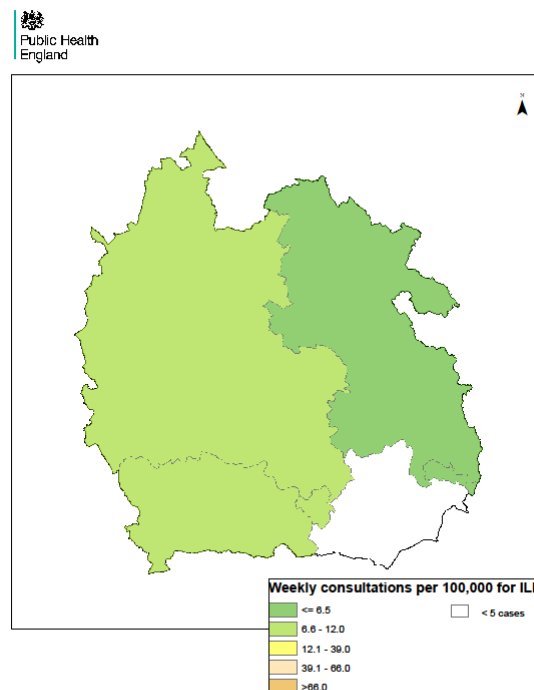
Week 16



Week 17



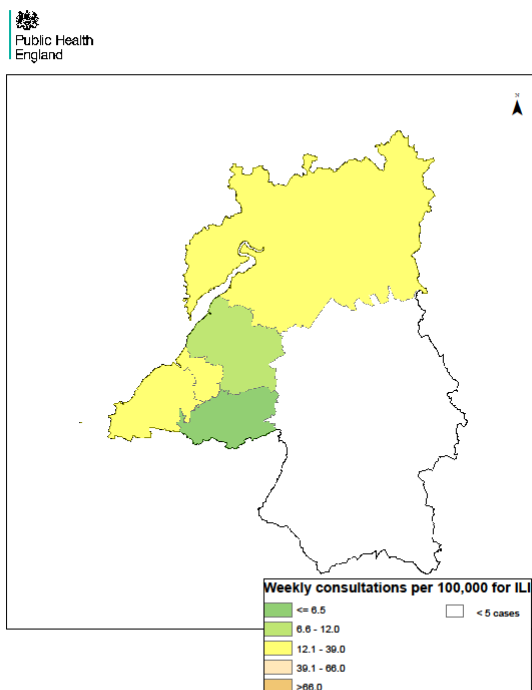
Week 18



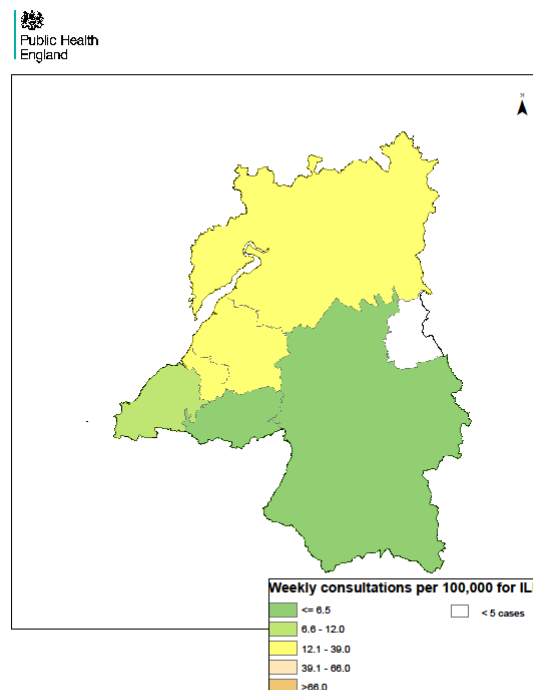
Avon, Gloucestershire & Wiltshire

Weekly ILI
consultation
rate by LA
for Avon,
Gloucestershire
& Wiltshire
PHE Centre

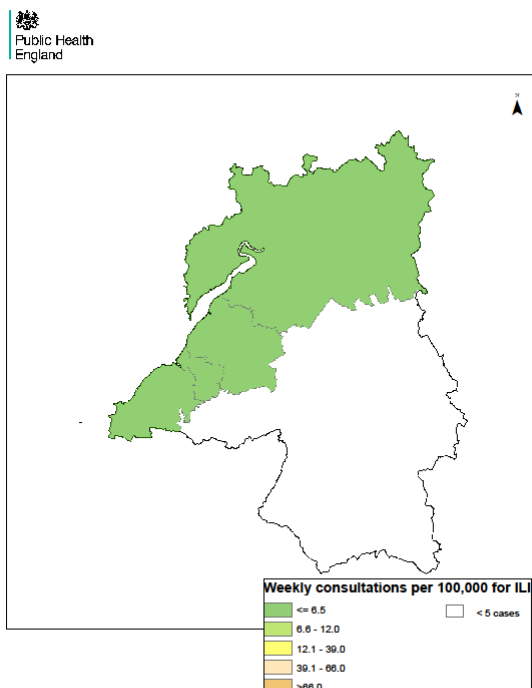
Week 15



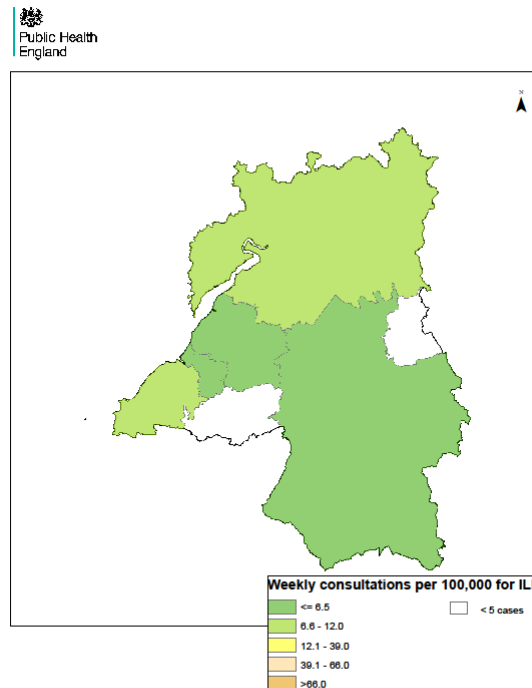
Week 16



Week 17



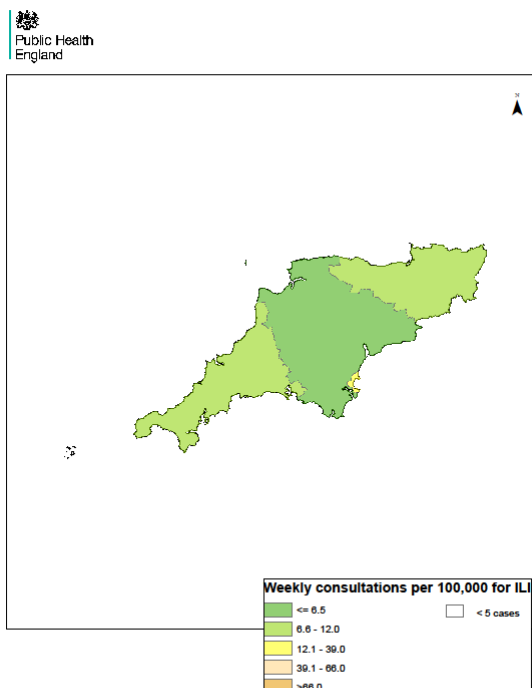
Week 18



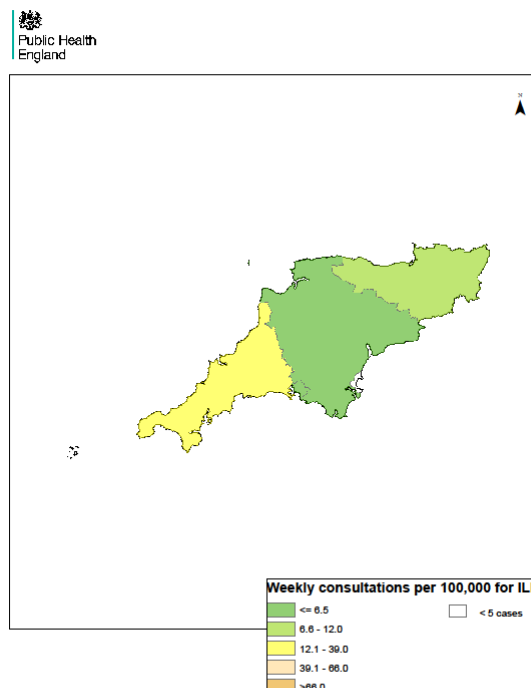
Devon, Cornwall & Somerset

Weekly ILI
consultation
rate by LA
for Devon,
Cornwall &
Somerset
PHE Centre

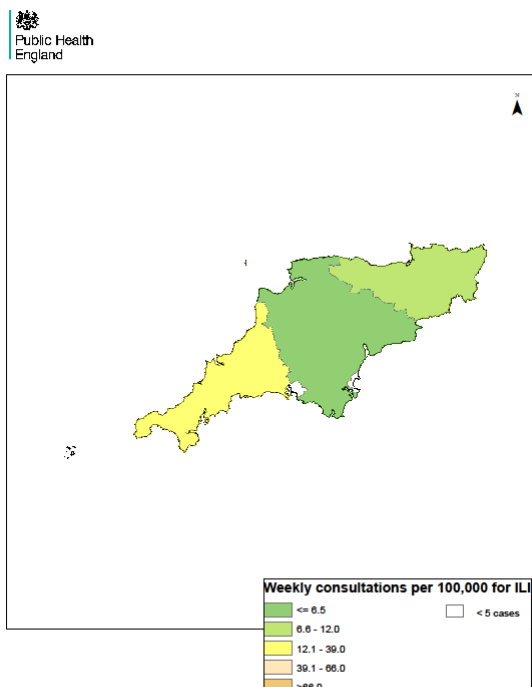
Week 15



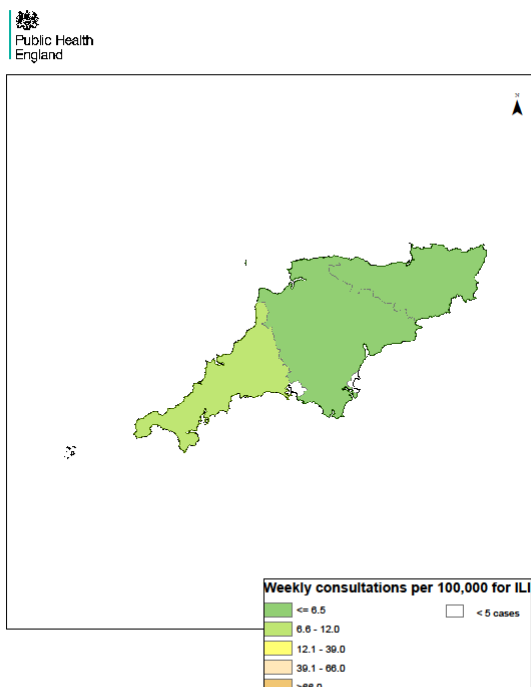
Week 16



Week 17



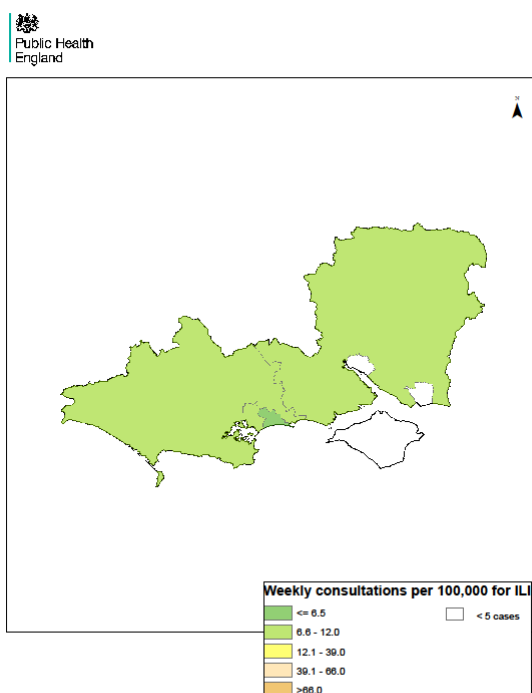
Week 18



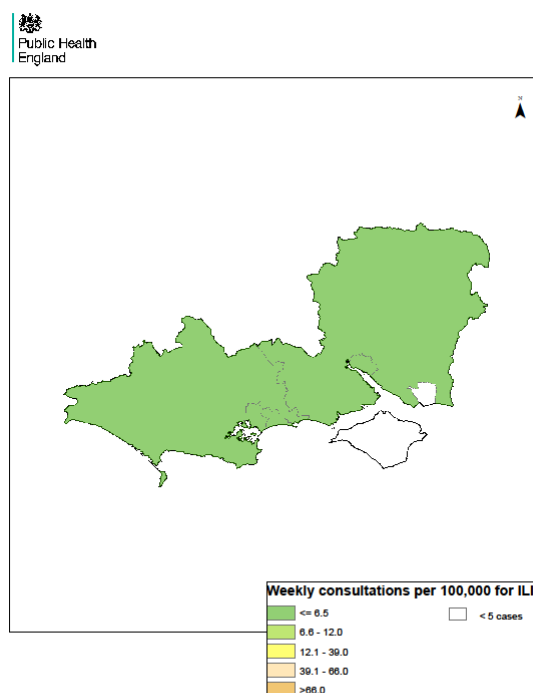
Wessex

Weekly ILI
consultation
rate by LA
for Wessex
PHE Centre

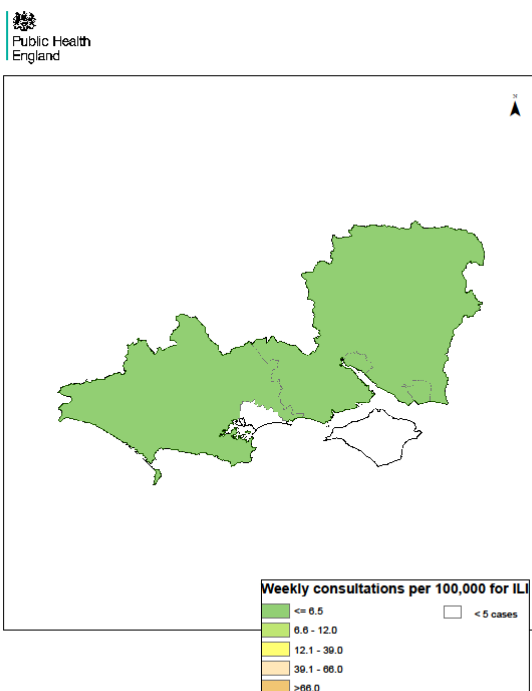
Week 15



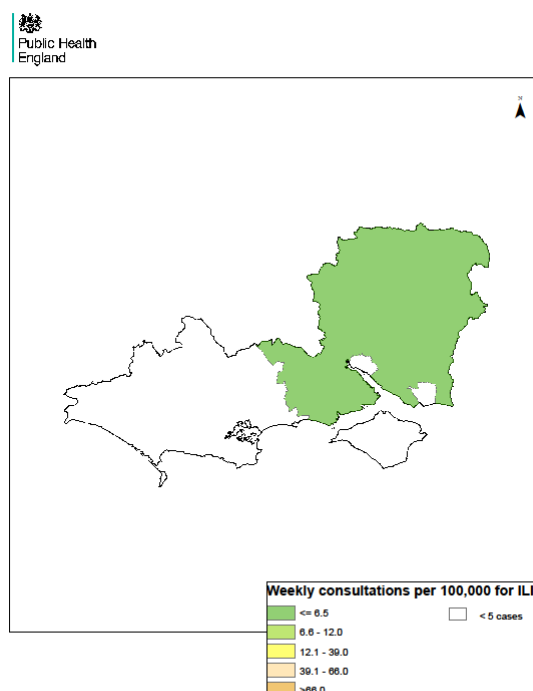
Week 16



Week 17



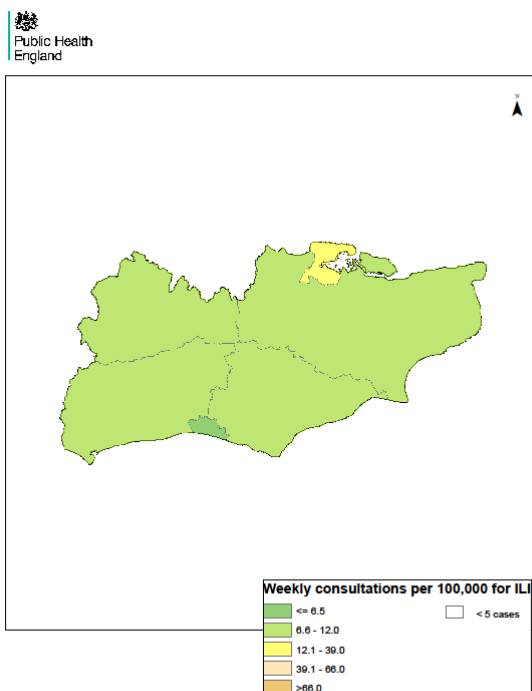
Week 18



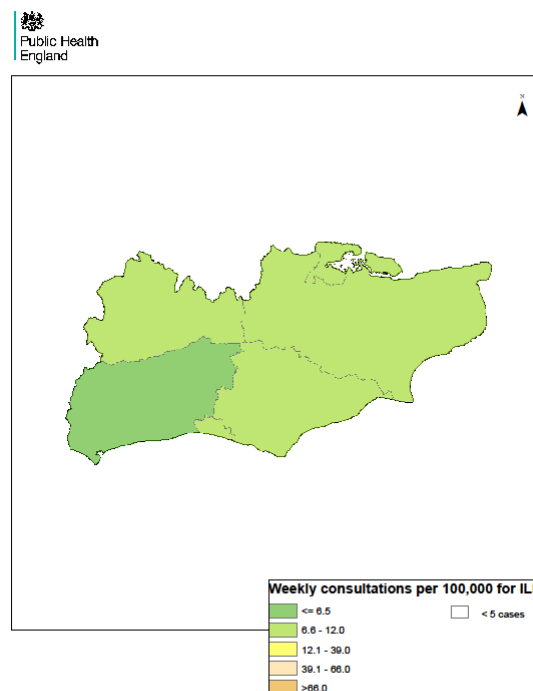
Kent, Surrey & Sussex

Weekly ILI consultation rate by LA for Kent, Surrey & Sussex PHE Centre

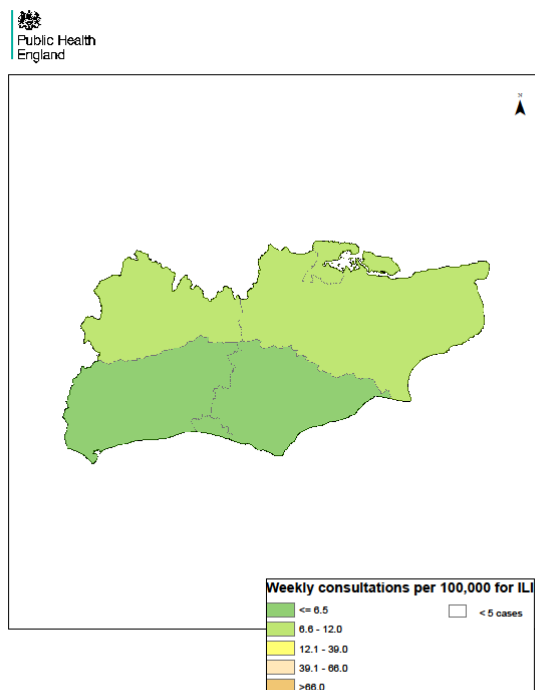
Week 15



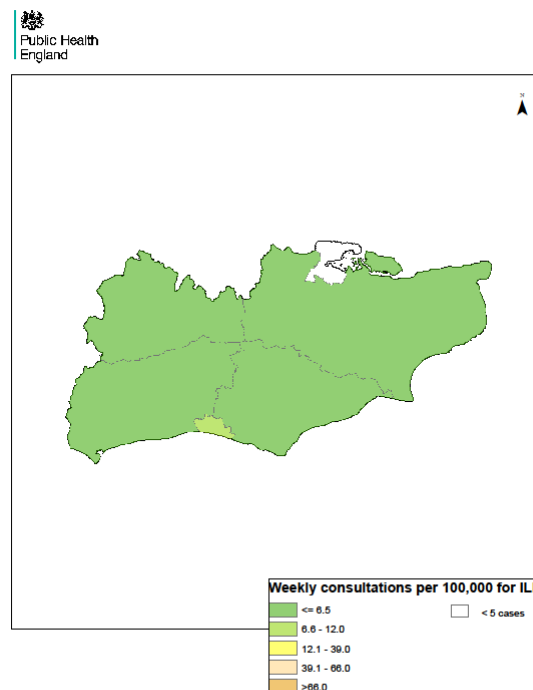
Week 16



Week 17



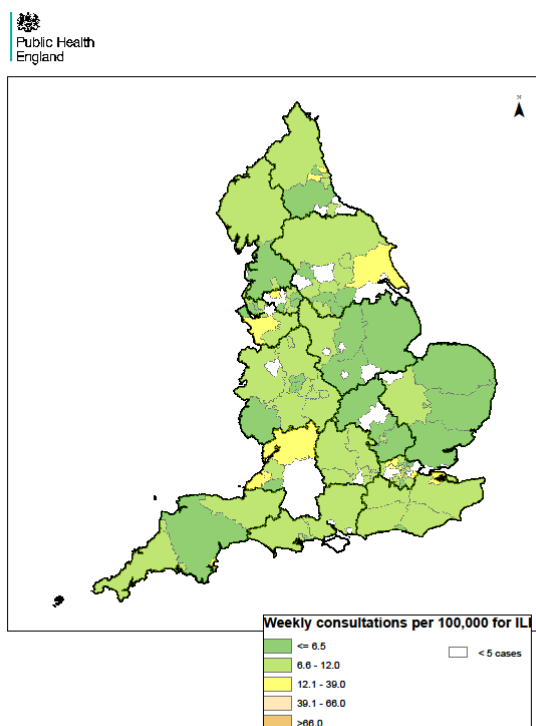
Week 18



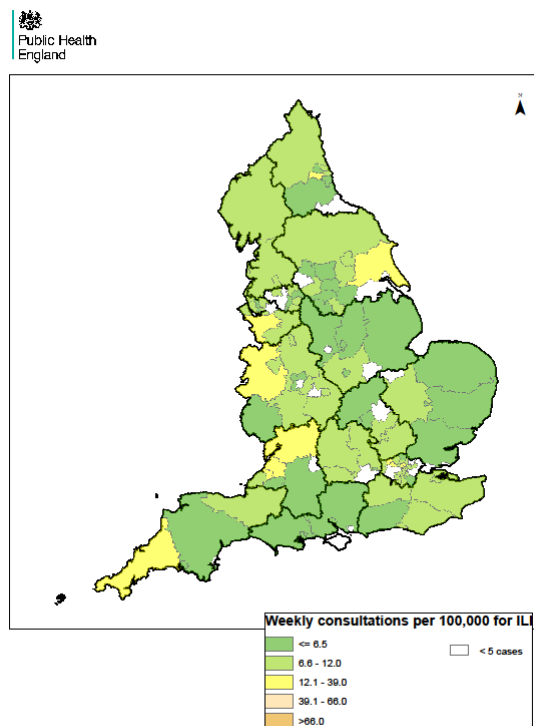
England

Weekly ILI
consultation
rate by LA
for England

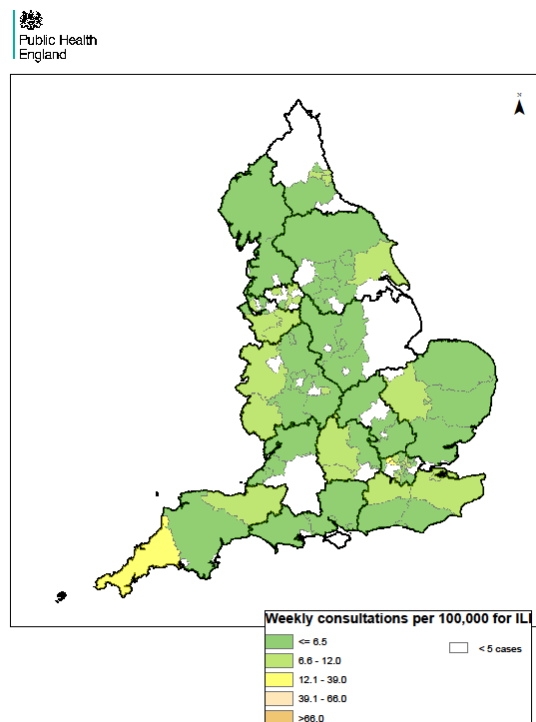
Week 15



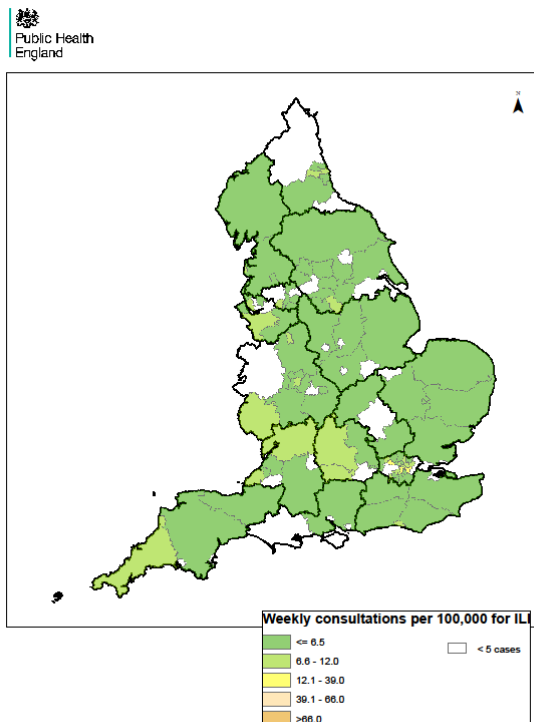
Week 16



Week 17



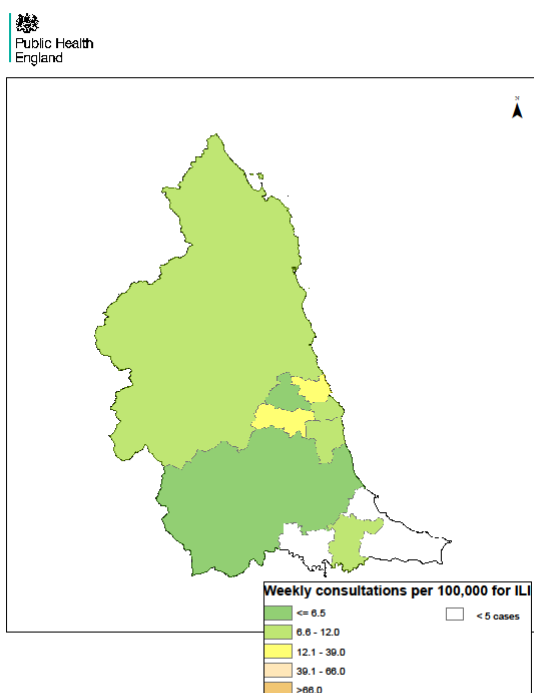
Week 18



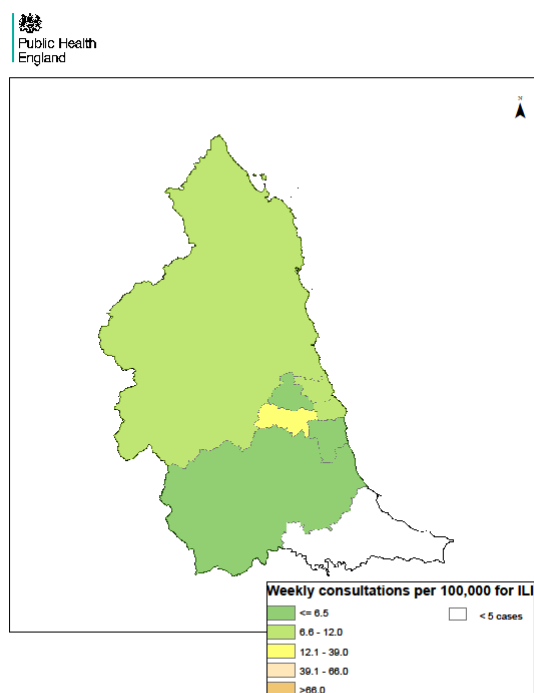
North East

Weekly ILI
consultation
rate by LA
for North
East PHE
Centre

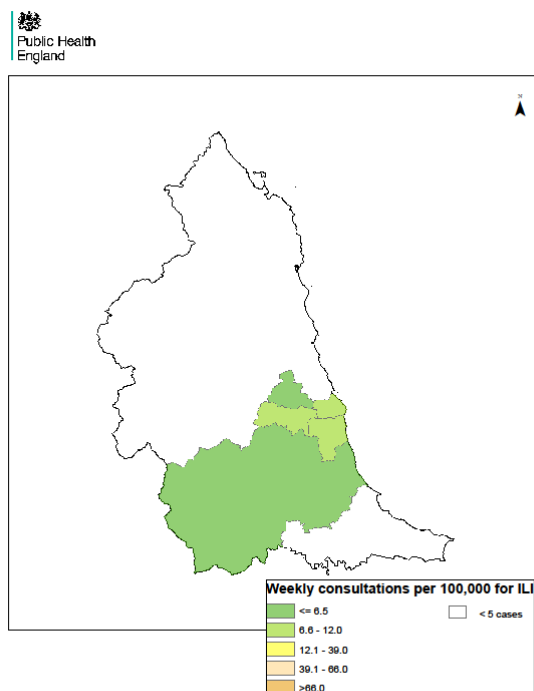
Week 15



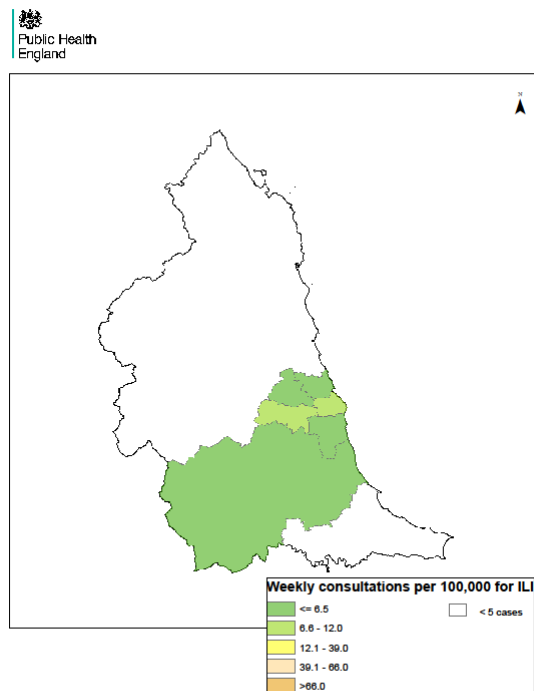
Week 16



Week 17



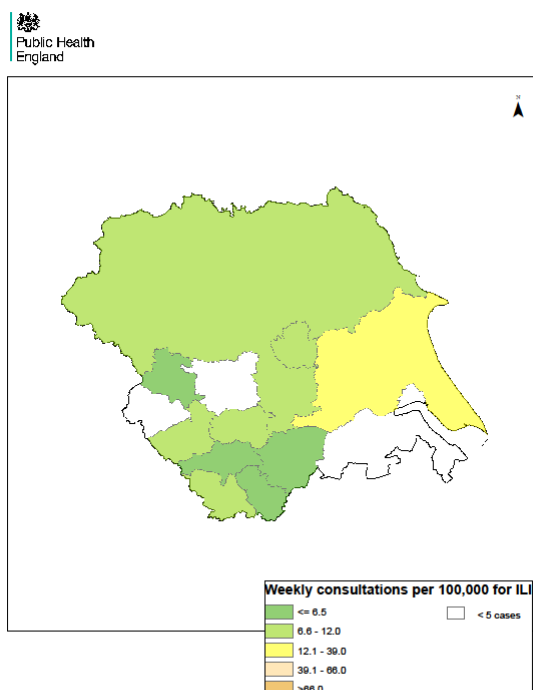
Week 18



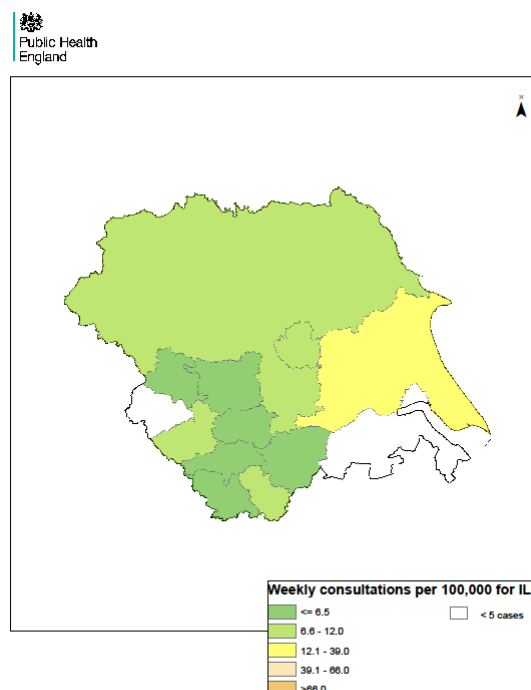
Yorkshire & Humber

Weekly ILI consultation rate by LA for Yorkshire & Humber PHE Centre

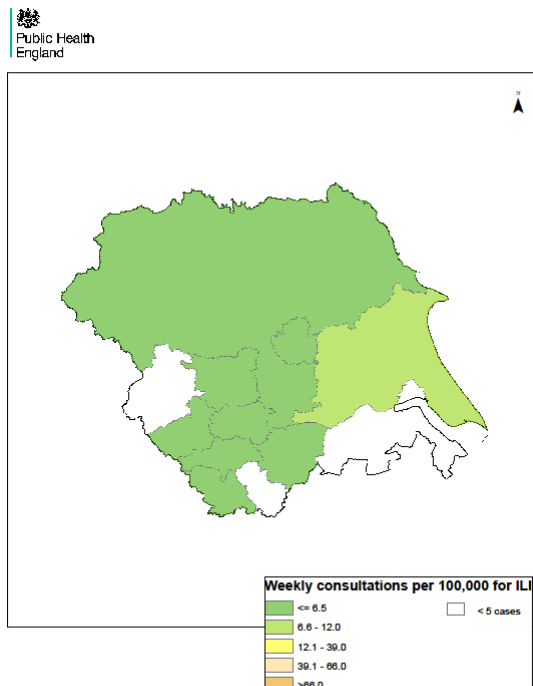
Week 15



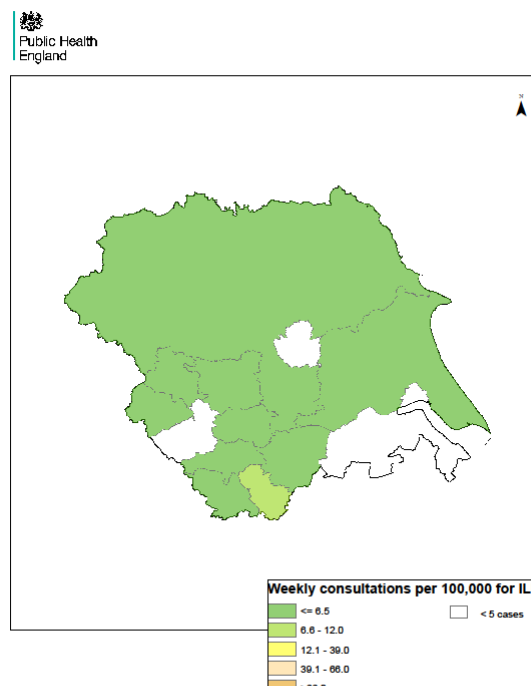
Week 16



Week 17



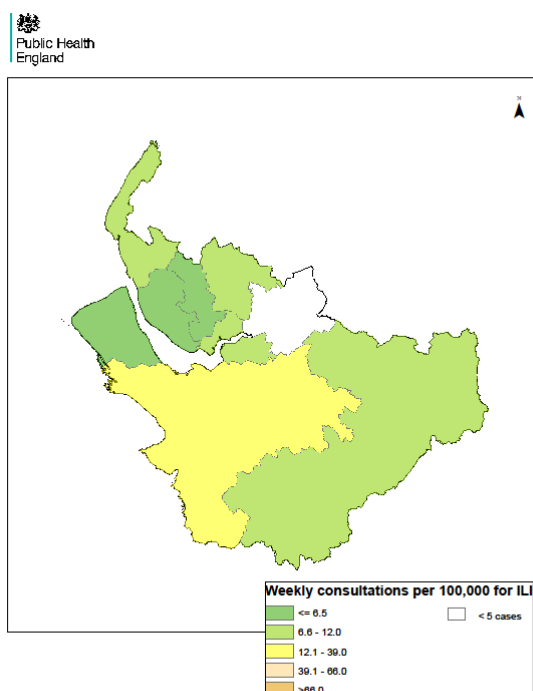
Week 18



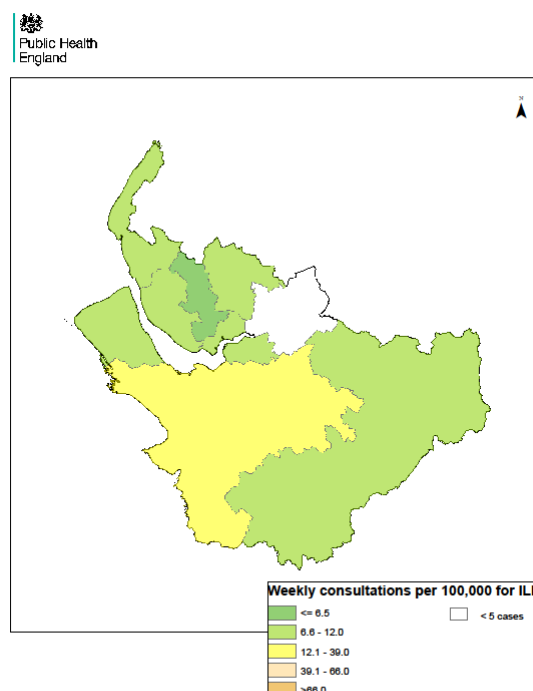
Cheshire & Merseyside

Weekly ILI consultation rate by LA for Cheshire & Merseyside PHE Centre

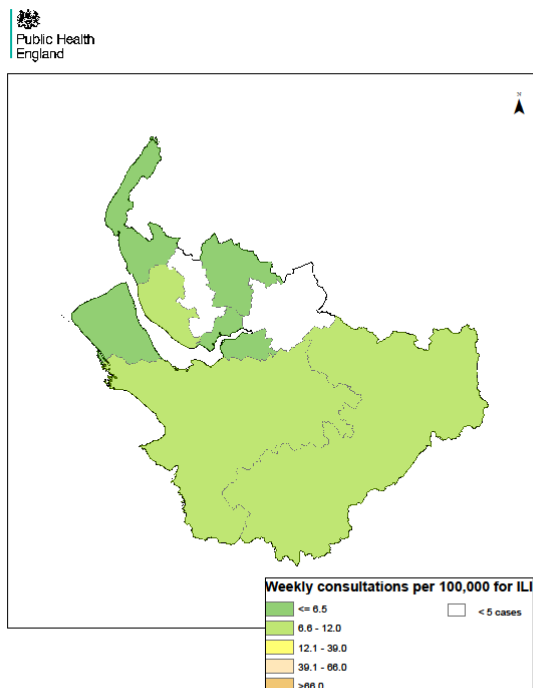
Week 15



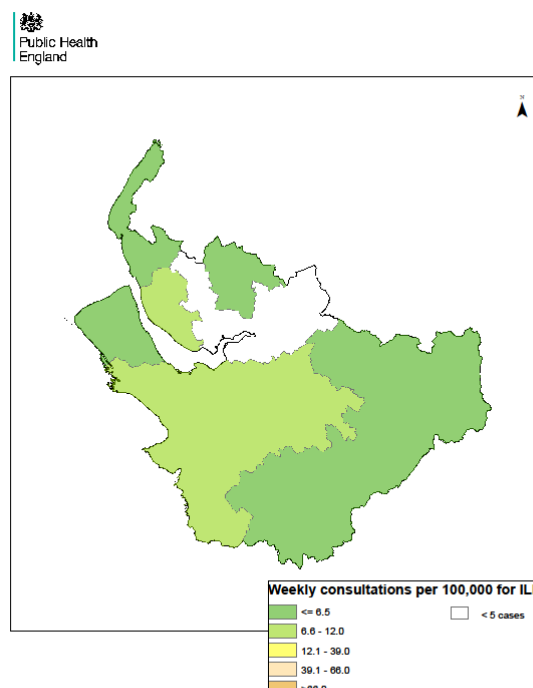
Week 16



Week 17



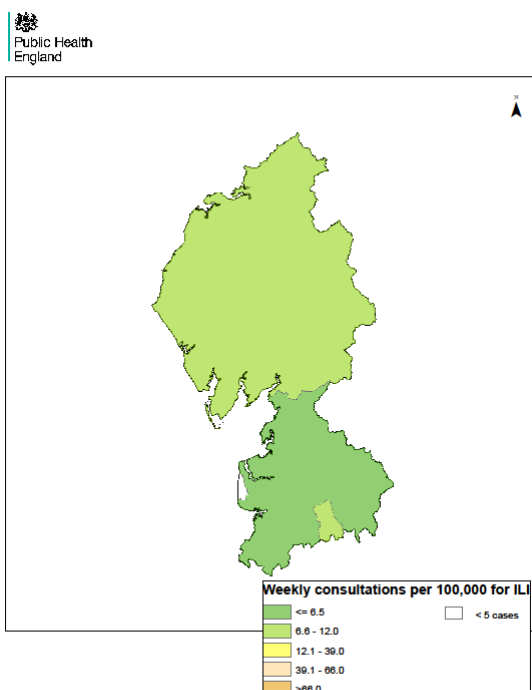
Week 18



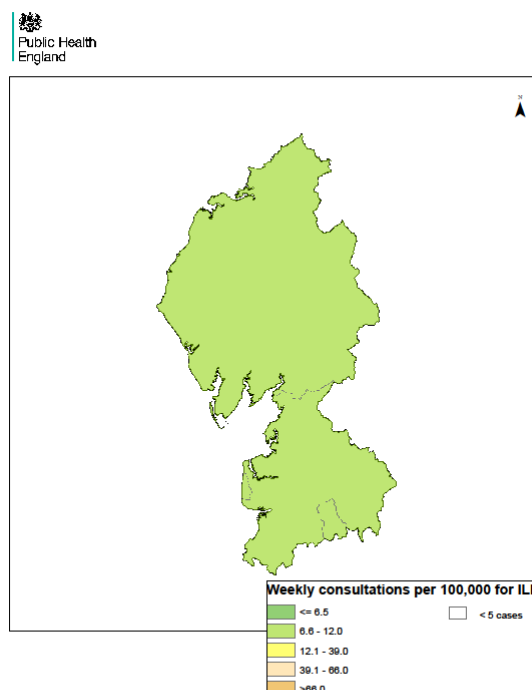
Cumbria & Lancashire

Weekly ILI consultation rate by LA for Cumbria & Lancashire PHE Centre

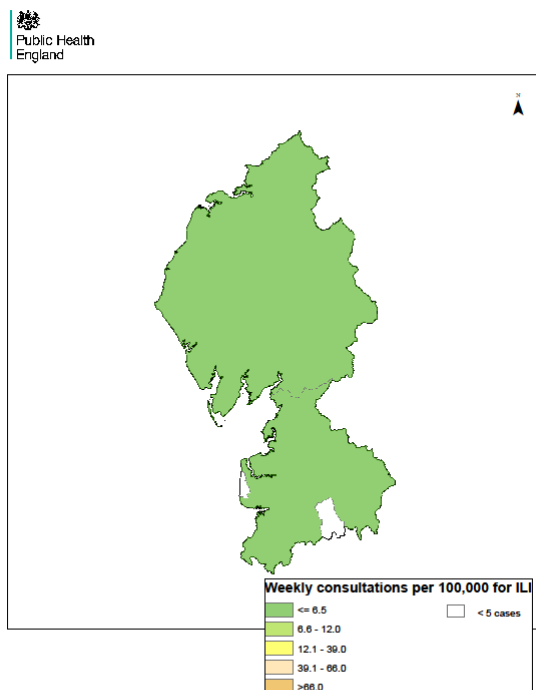
Week 15



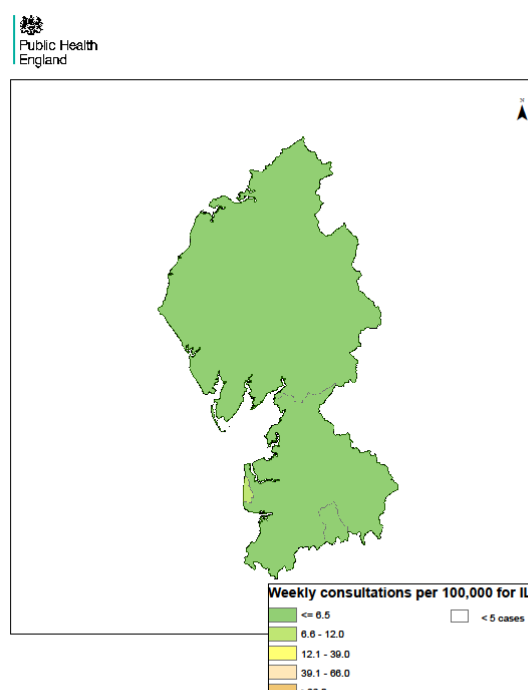
Week 16



Week 17



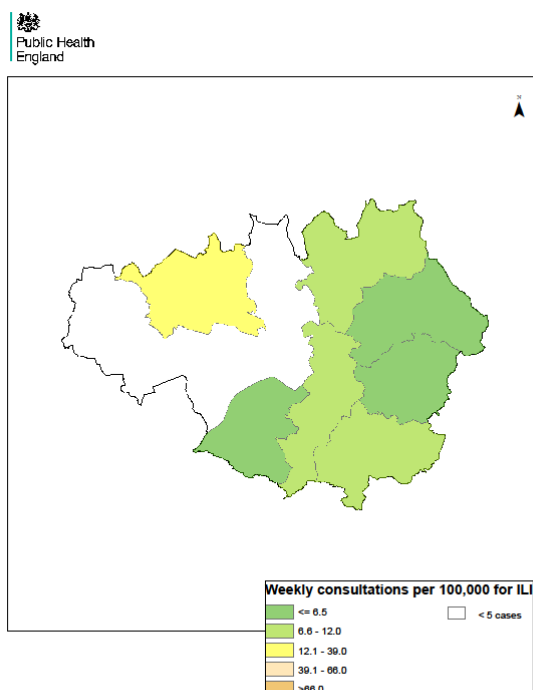
Week 18



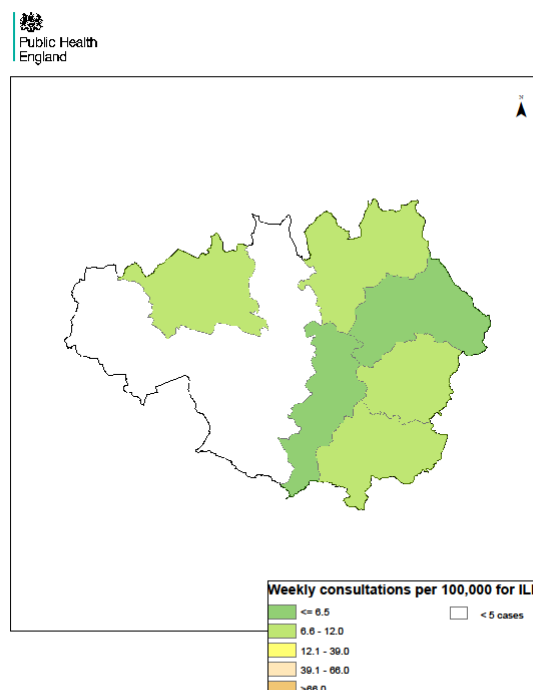
Greater Manchester

Weekly ILI consultation rate by LA for Greater Manchester PHE Centre

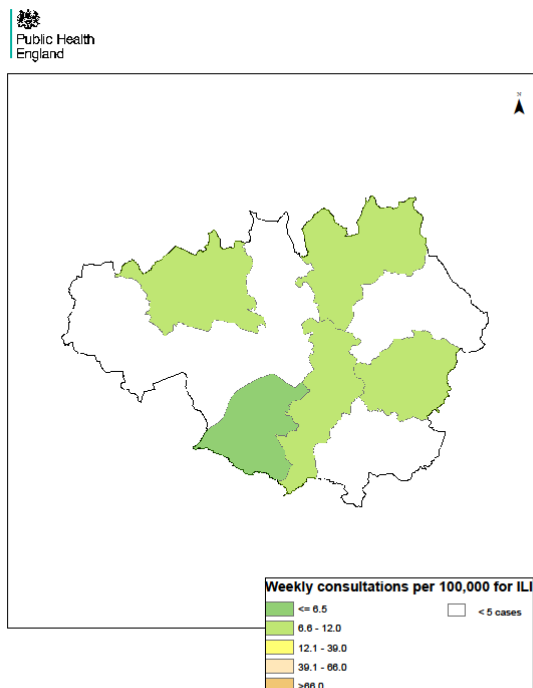
Week 15



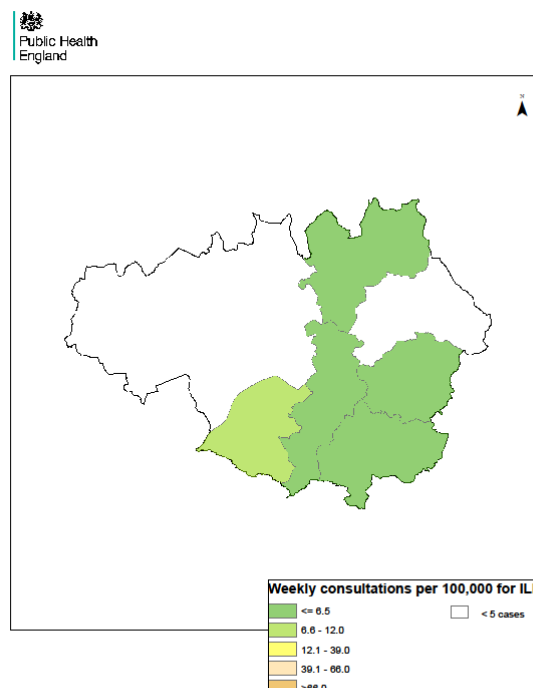
Week 16



Week 17



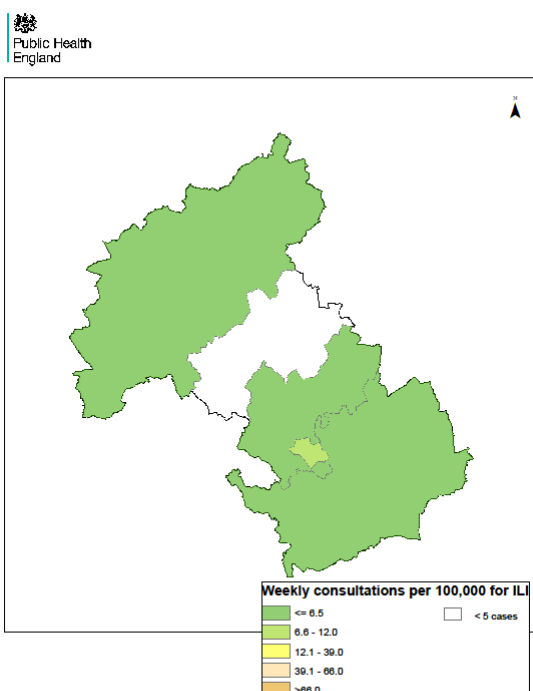
Week 18



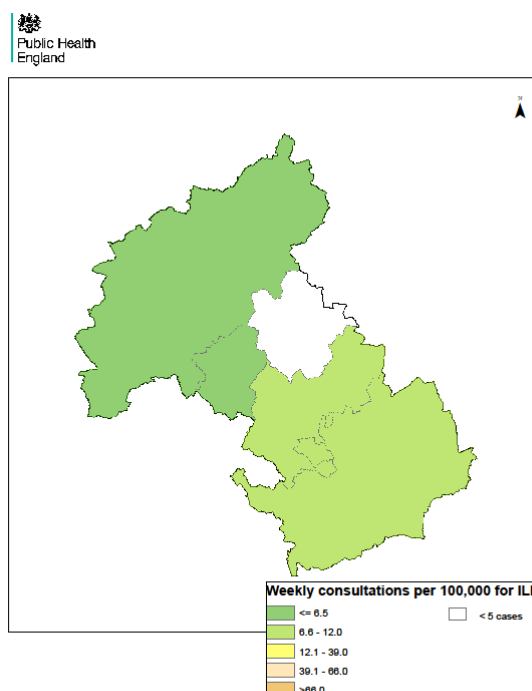
**South
Midlands &
Hertfordshire**

Weekly ILI
consultation
rate by LA
for South
Midlands &
Hertfordshire
PHE Centre

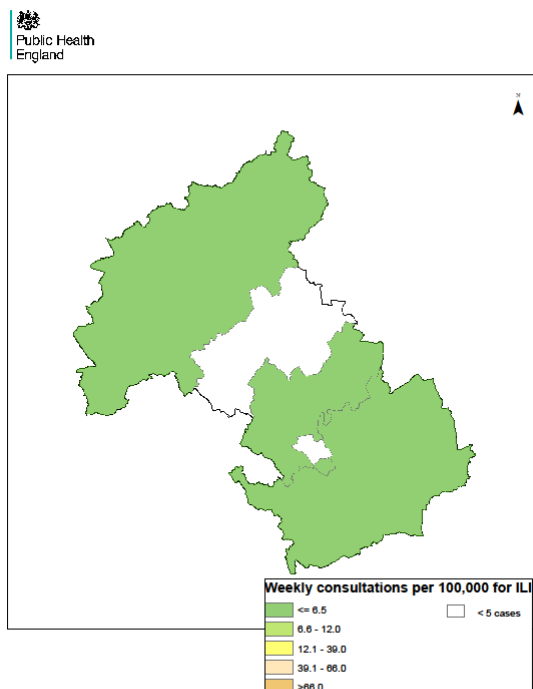
Week 15



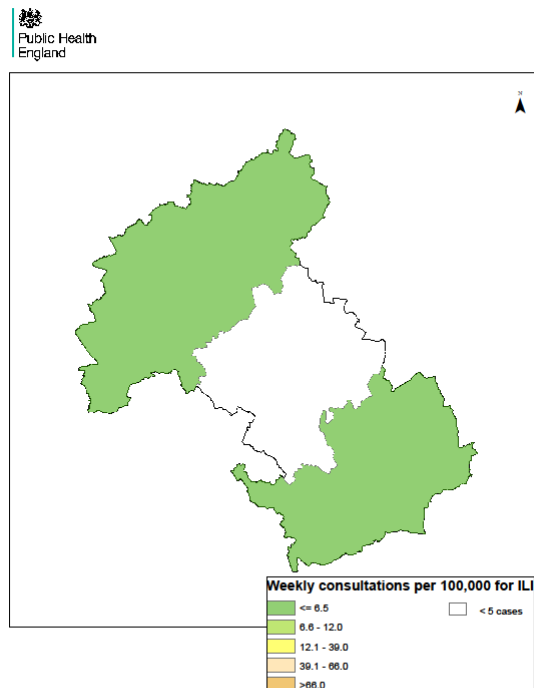
Week 16



Week 17



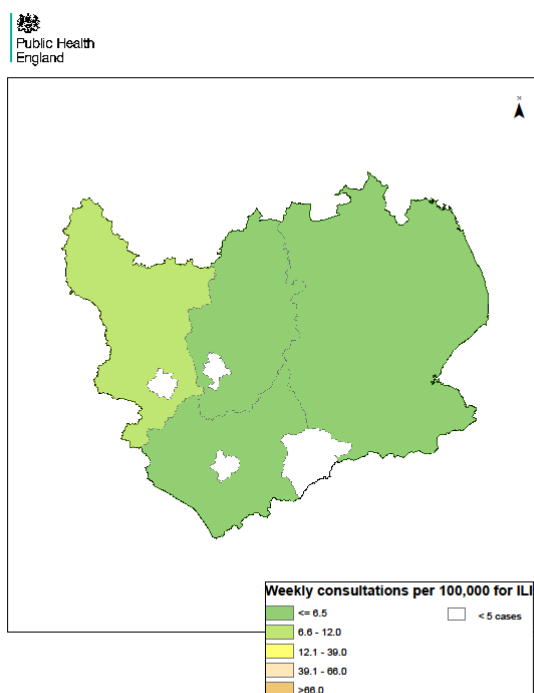
Week 18



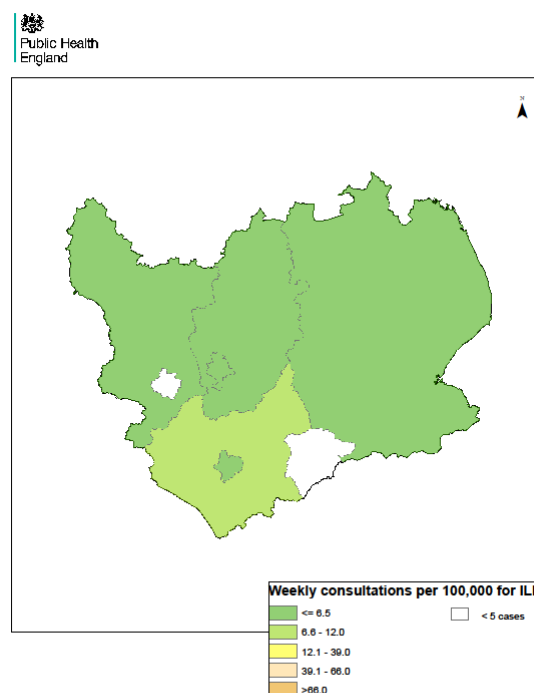
**East
Midlands**

Weekly ILI
consultation
rate by LA
for East
Midlands
PHE Centre

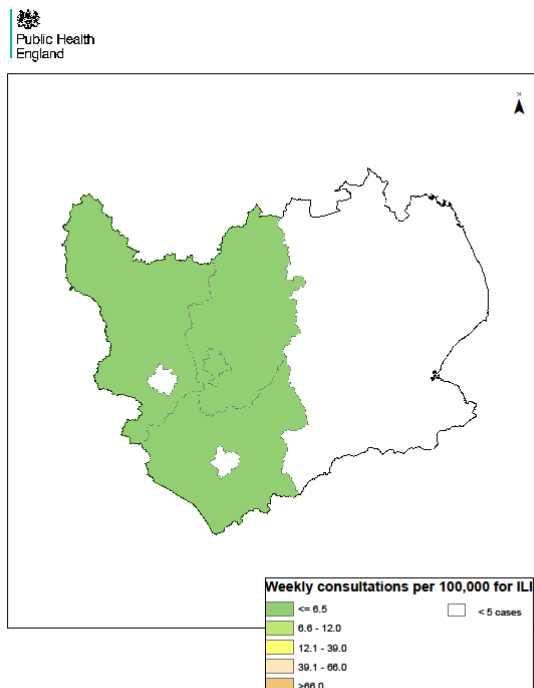
Week 15



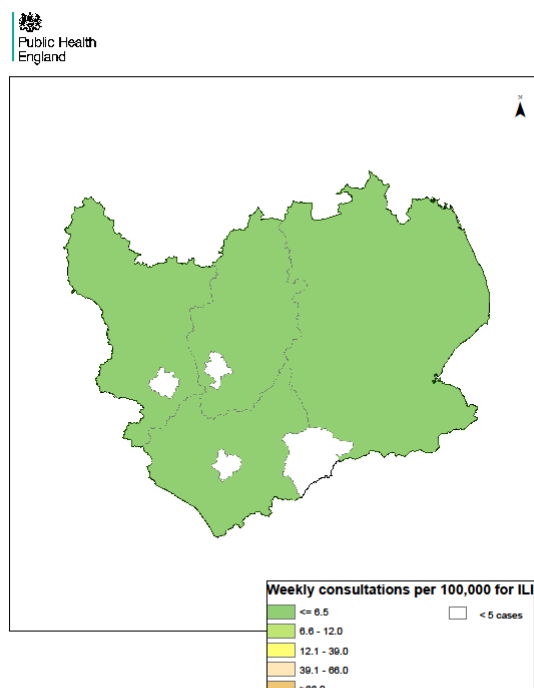
Week 16



Week 17



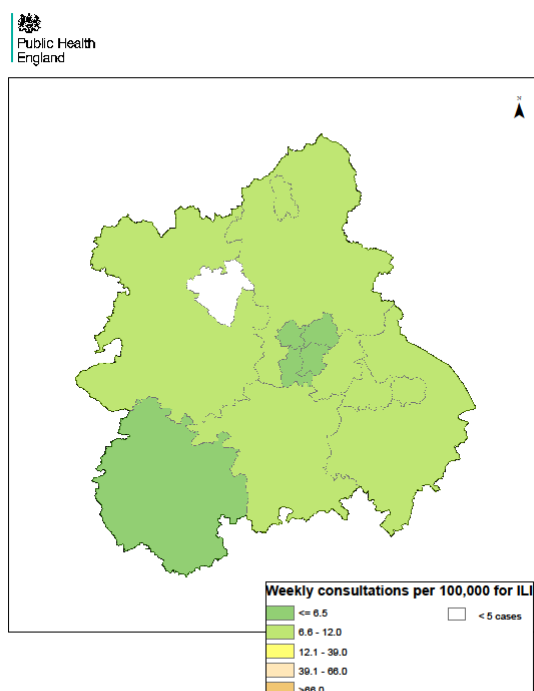
Week 18



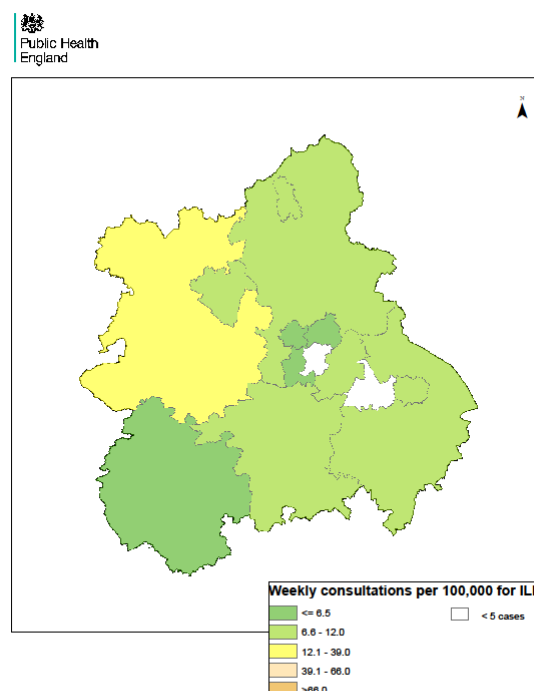
**West
Midlands**

Weekly ILI
consultation
rate by LA
for West
Midlands
PHE Centre

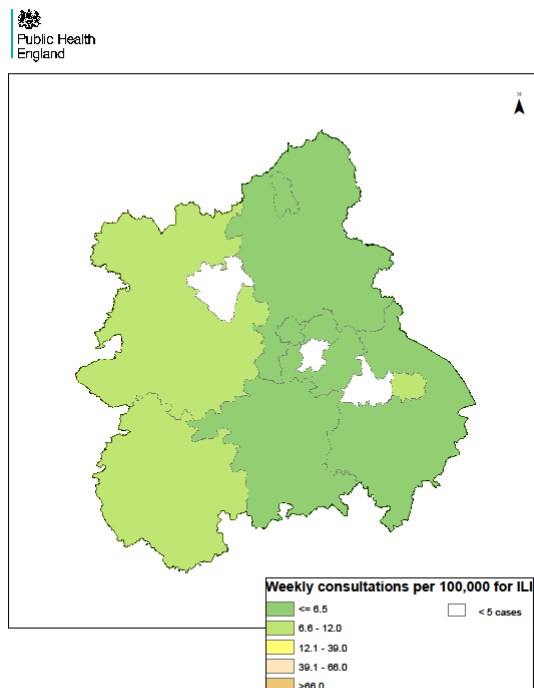
Week 15



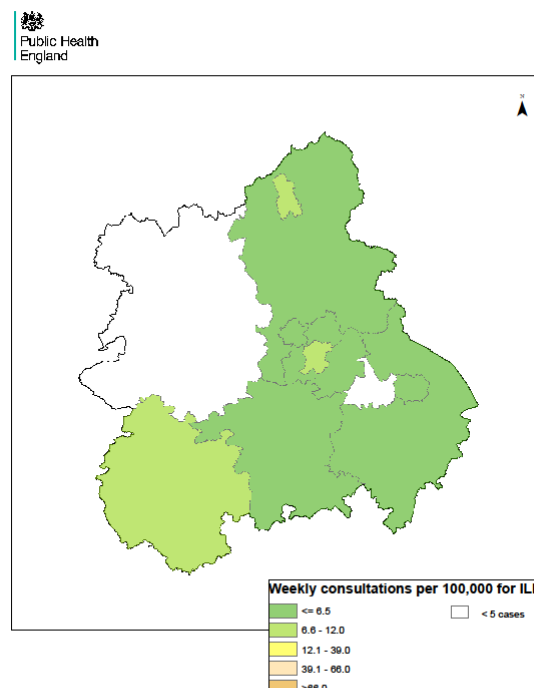
Week 16



Week 17



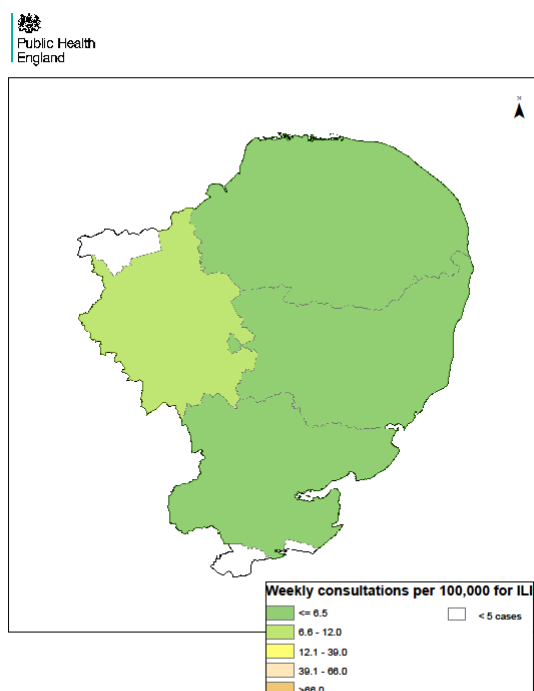
Week 18



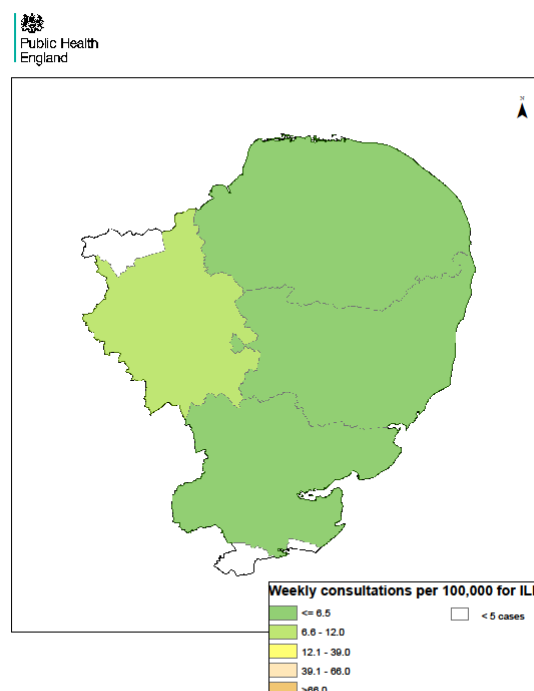
Anglia & Essex

Weekly ILI
consultation
rate by LA
for Anglia &
Essex PHE
Centre

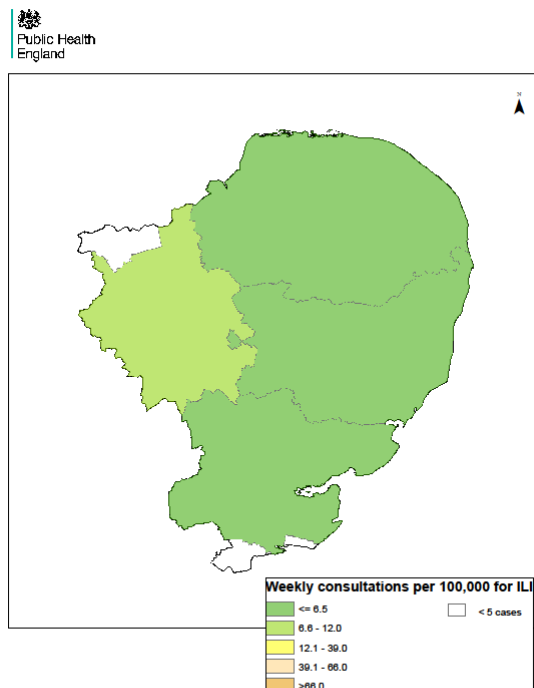
Week 15



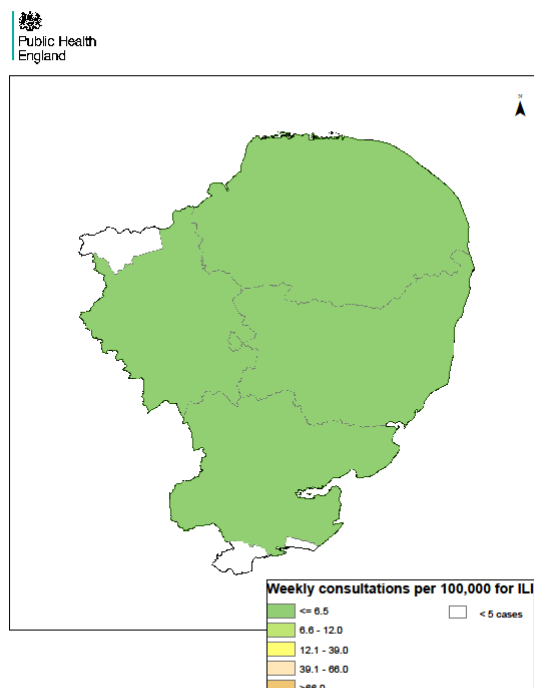
Week 16



Week 17



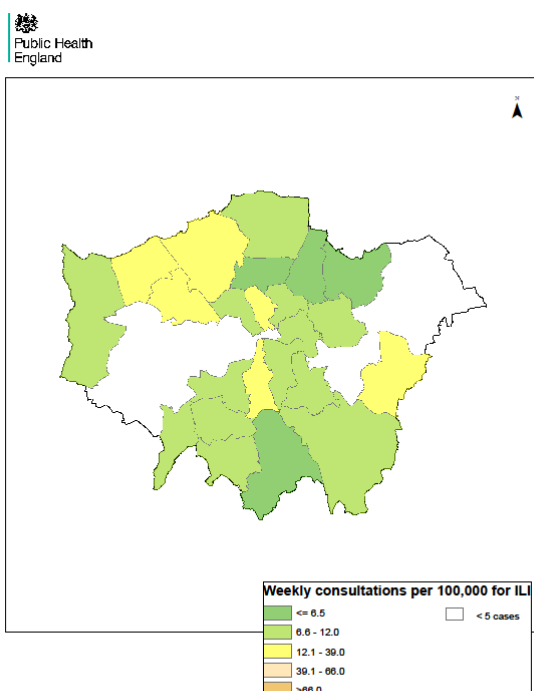
Week 18



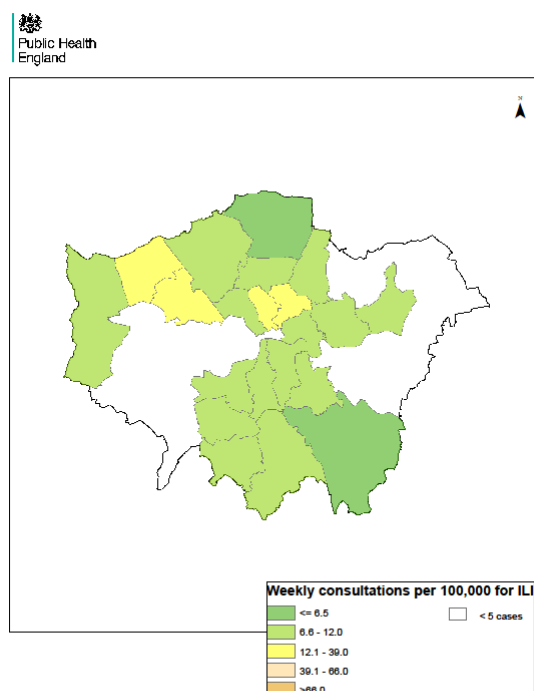
London

Weekly ILI
consultation
rate by LA
for London
PHE Centre

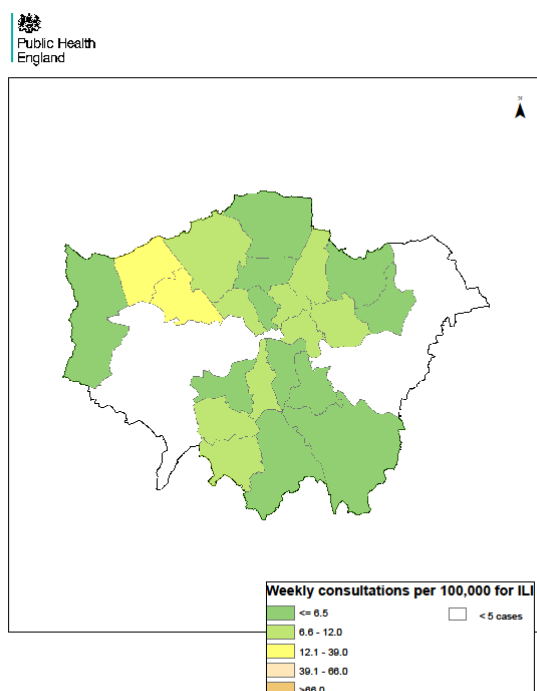
Week 15



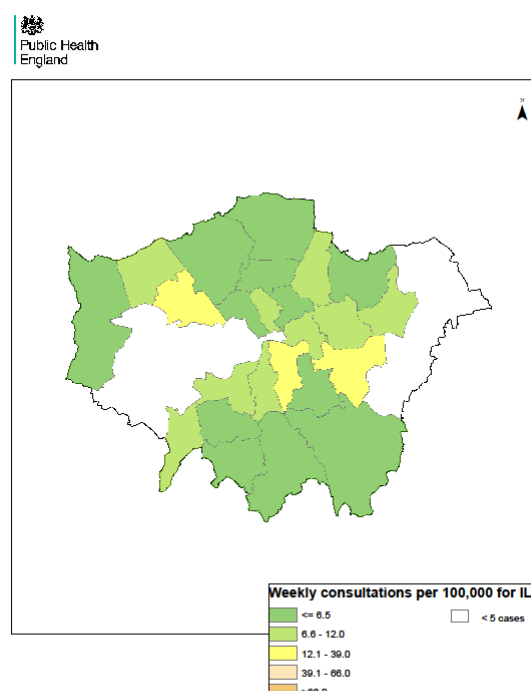
Week 16



Week 17



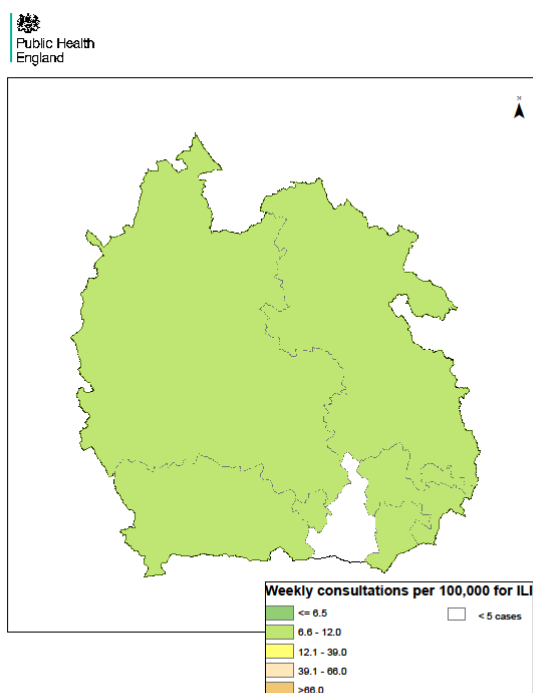
Week 18



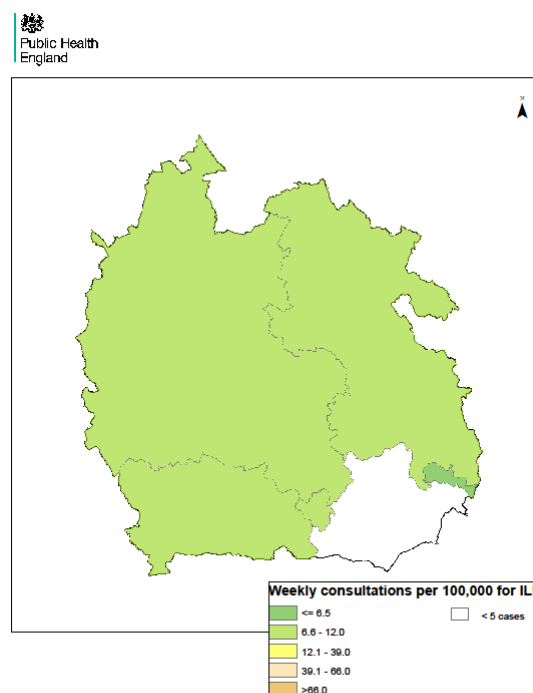
Thames Valley

Weekly ILI
consultation
rate by LA
for Thames
Valley PHE
Centre

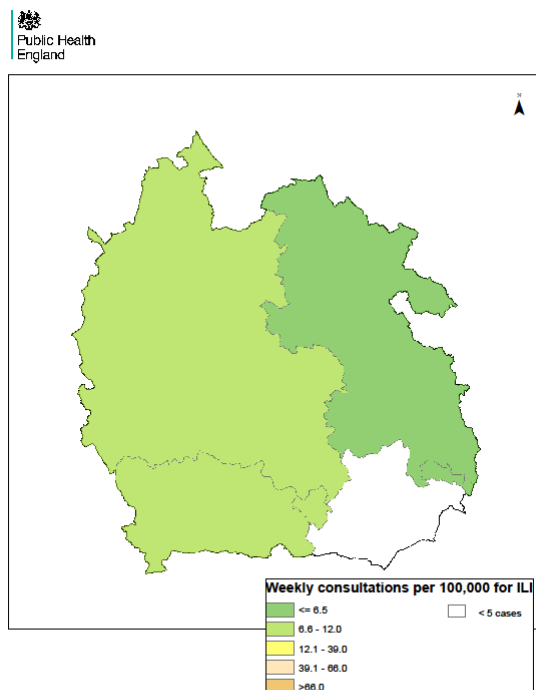
Week 15



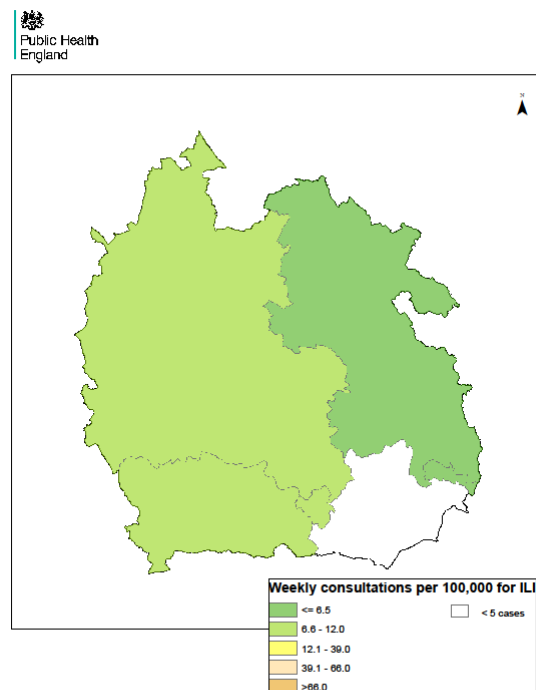
Week 16



Week 17



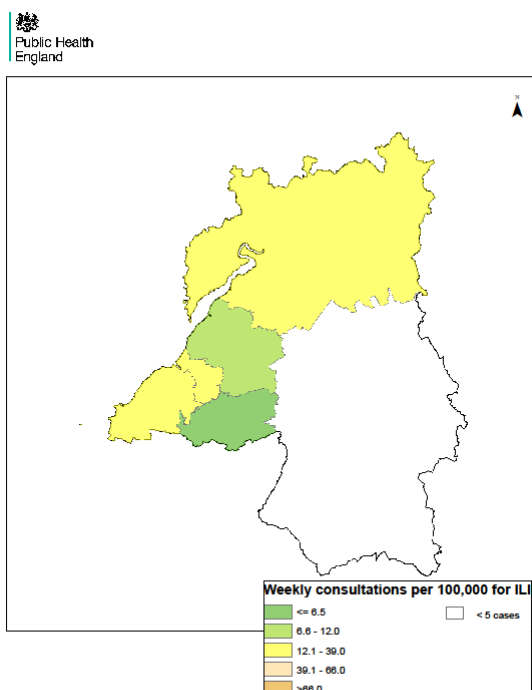
Week 18



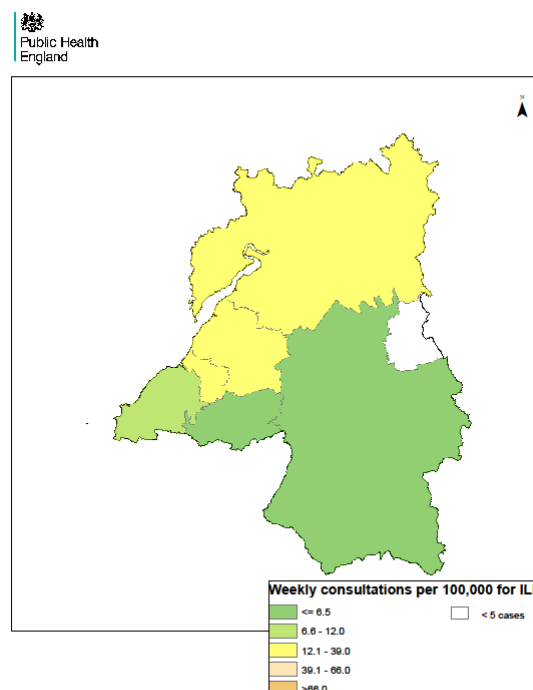
Avon, Gloucestershire & Wiltshire

Weekly ILI
consultation
rate by LA
for Avon,
Gloucestershire
& Wiltshire
PHE Centre

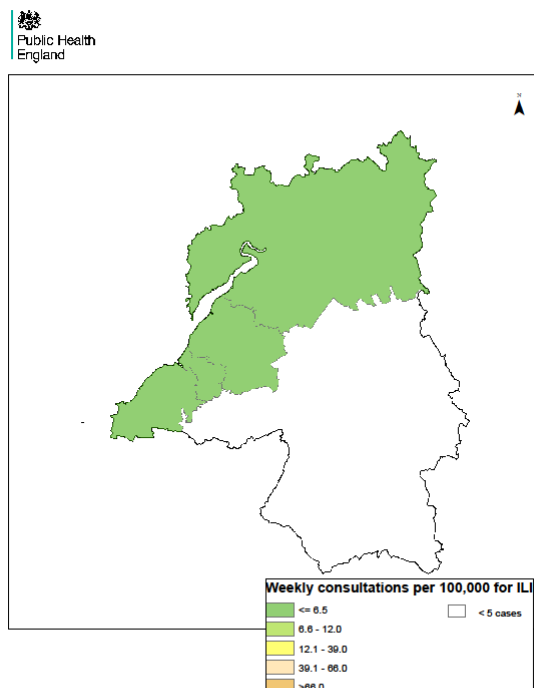
Week 15



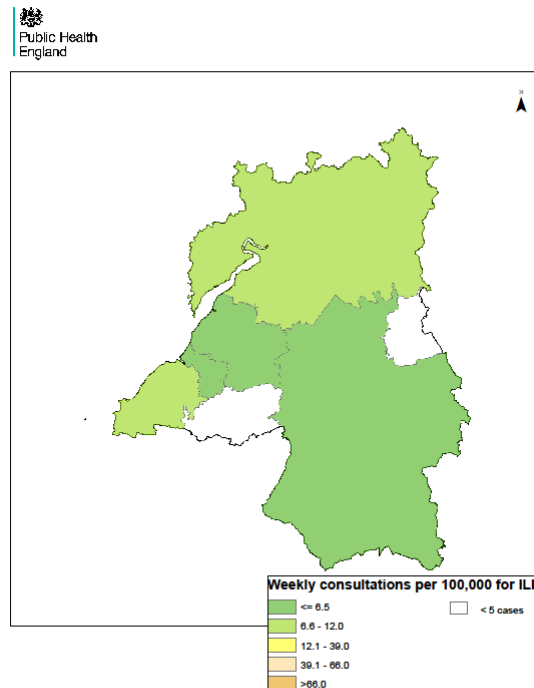
Week 16



Week 17



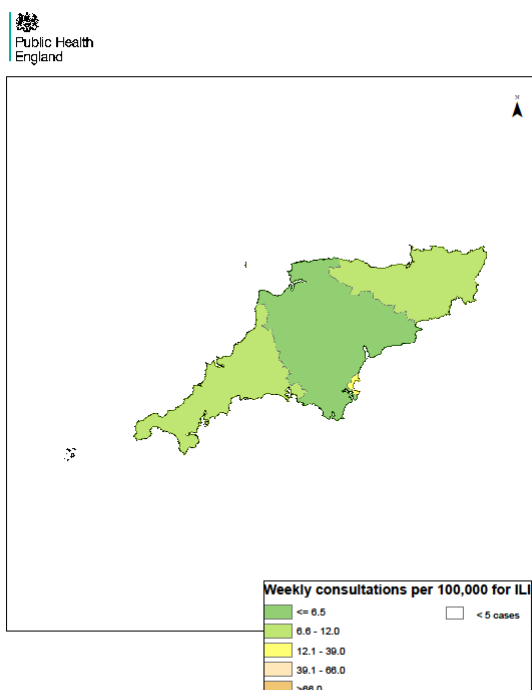
Week 18



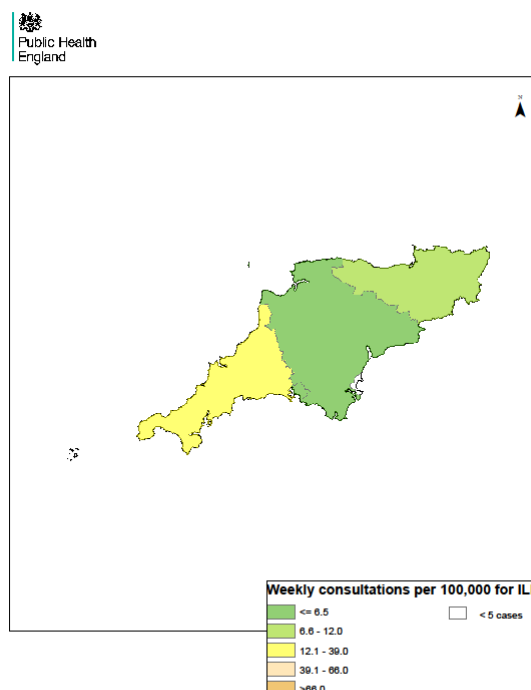
**Devon,
Cornwall &
Somerset**

Weekly ILI
consultation
rate by LA
for Devon,
Cornwall &
Somerset
PHE Centre

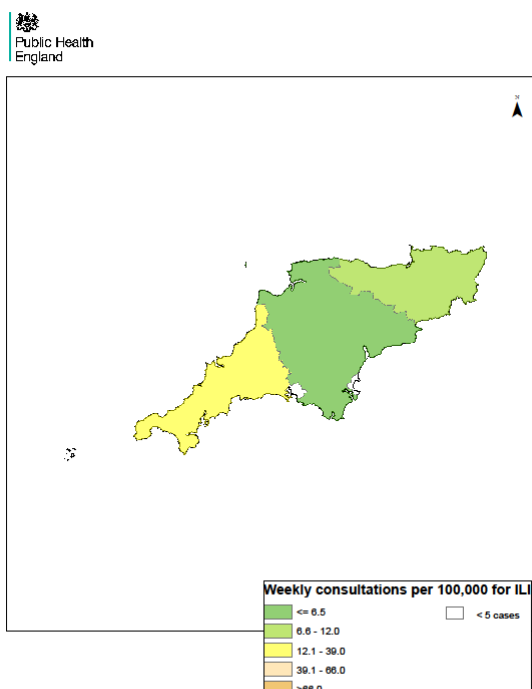
Week 15



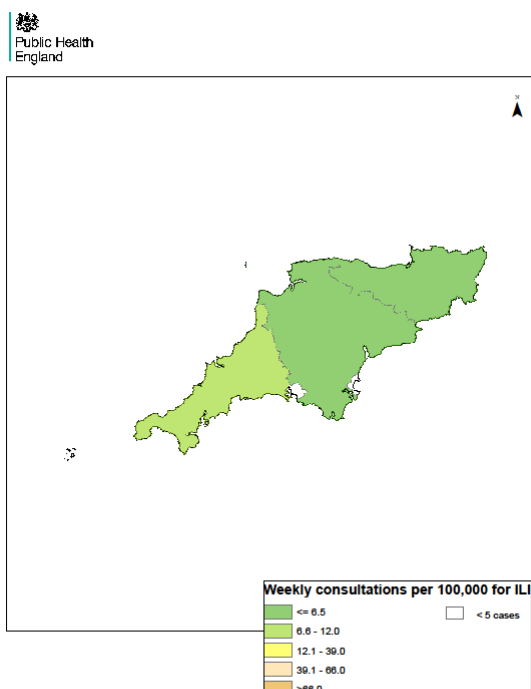
Week 16



Week 17



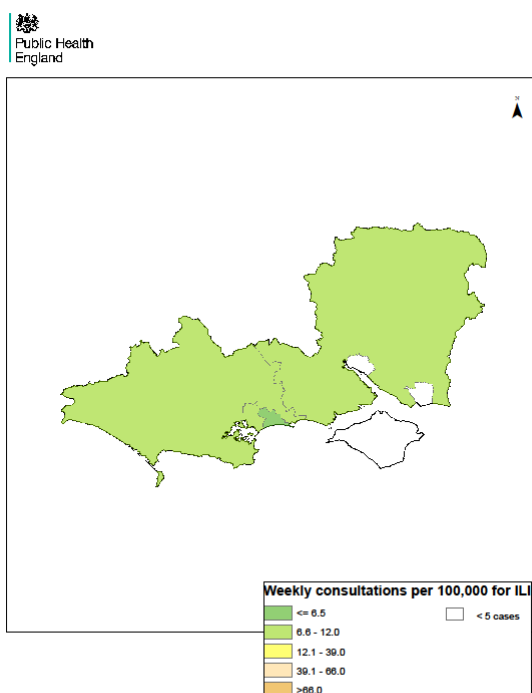
Week 18



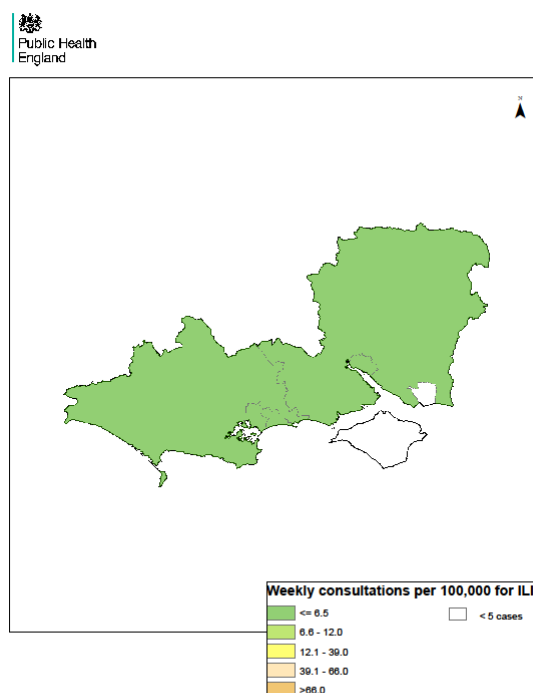
Wessex

Weekly ILI
consultation
rate by LA
for Wessex
PHE Centre

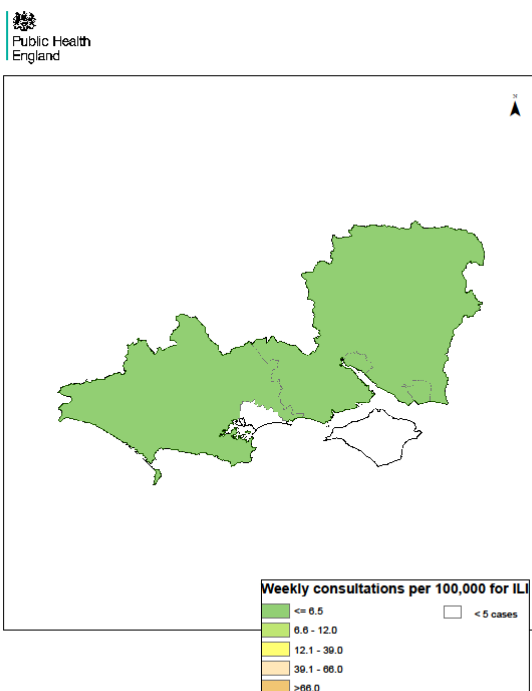
Week 15



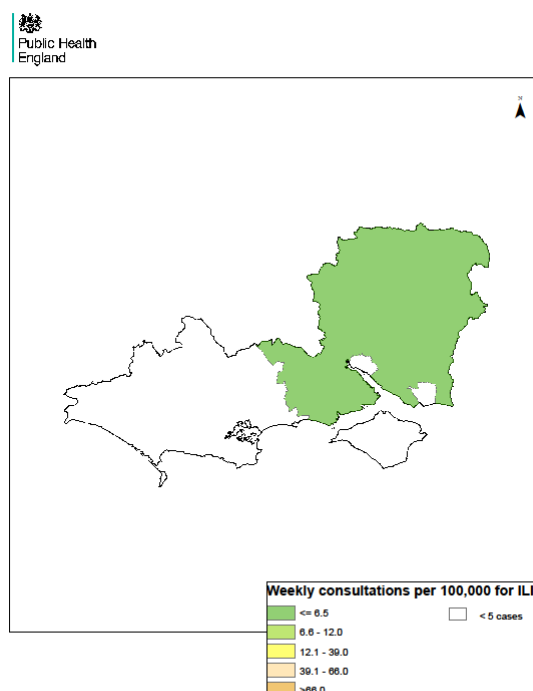
Week 16



Week 17



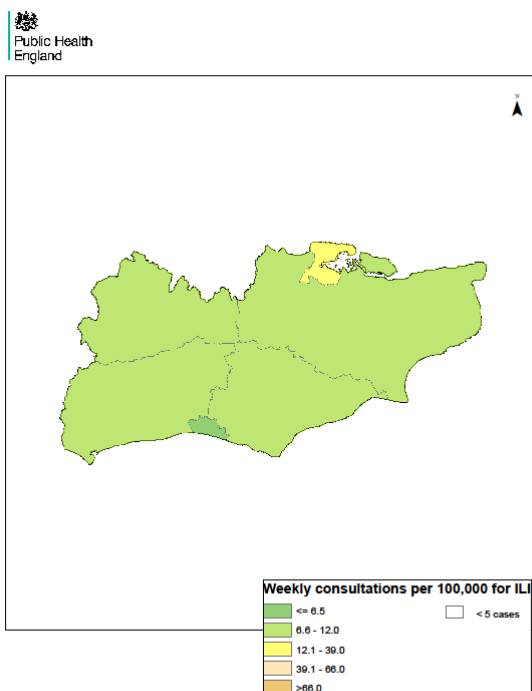
Week 18



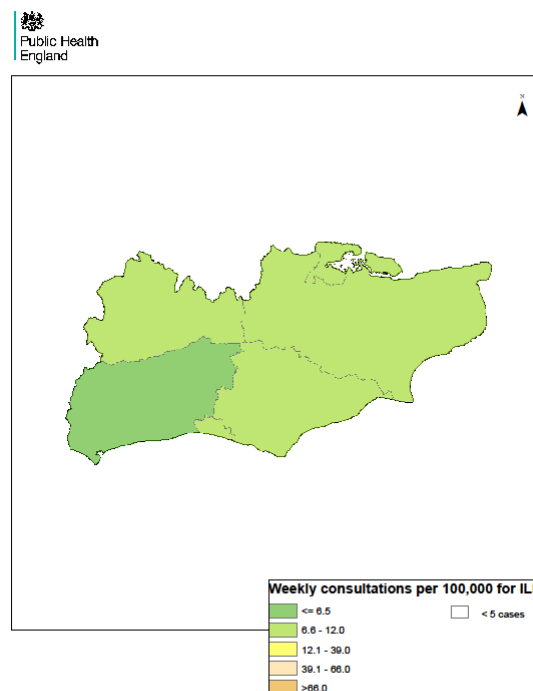
Kent, Surrey & Sussex

Weekly ILI consultation rate by LA for Kent, Surrey & Sussex PHE Centre

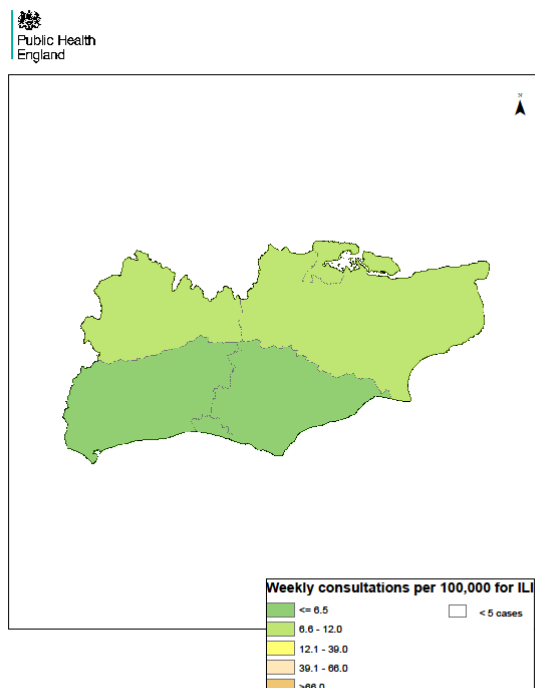
Week 15



Week 16



Week 17



Week 18

