

Department for Environment, Food and Rural Affairs

Allonby Bay MCZ

Feature Maps

17 January 2016

The following maps show where the features protected by this Marine Conservation Zone (MCZ) are located.

There are two separate maps, to make it easier to see the locations of features. One map shows the broad-scale habitats, and the second shows features of conservation importance. Broad scale habitats represents habitats, and associated species that live on and in the habitat. Features of conservation importance are specific habitats and species that are known to be rare, threatened or declining in our seas.

A range of different types of surveys have been used to create these maps. The symbols on the map show where a sample has been taken, or where a feature has been recorded in a specific location. For many features, there is also shading to show the extent of the area in which the feature is found. For the broad scale habitat maps, this is created from survey data and using mathematical models. On the FOCI maps, the extent is only shown where a survey has confirmed that the feature exists in this whole area. More detailed information on the techniques used and the features themselves can be found here:

<http://nepubprod.appspot.com/publication/4594304593952768>

297500.000000

300000.000000

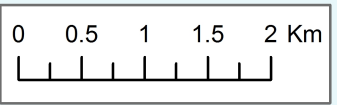
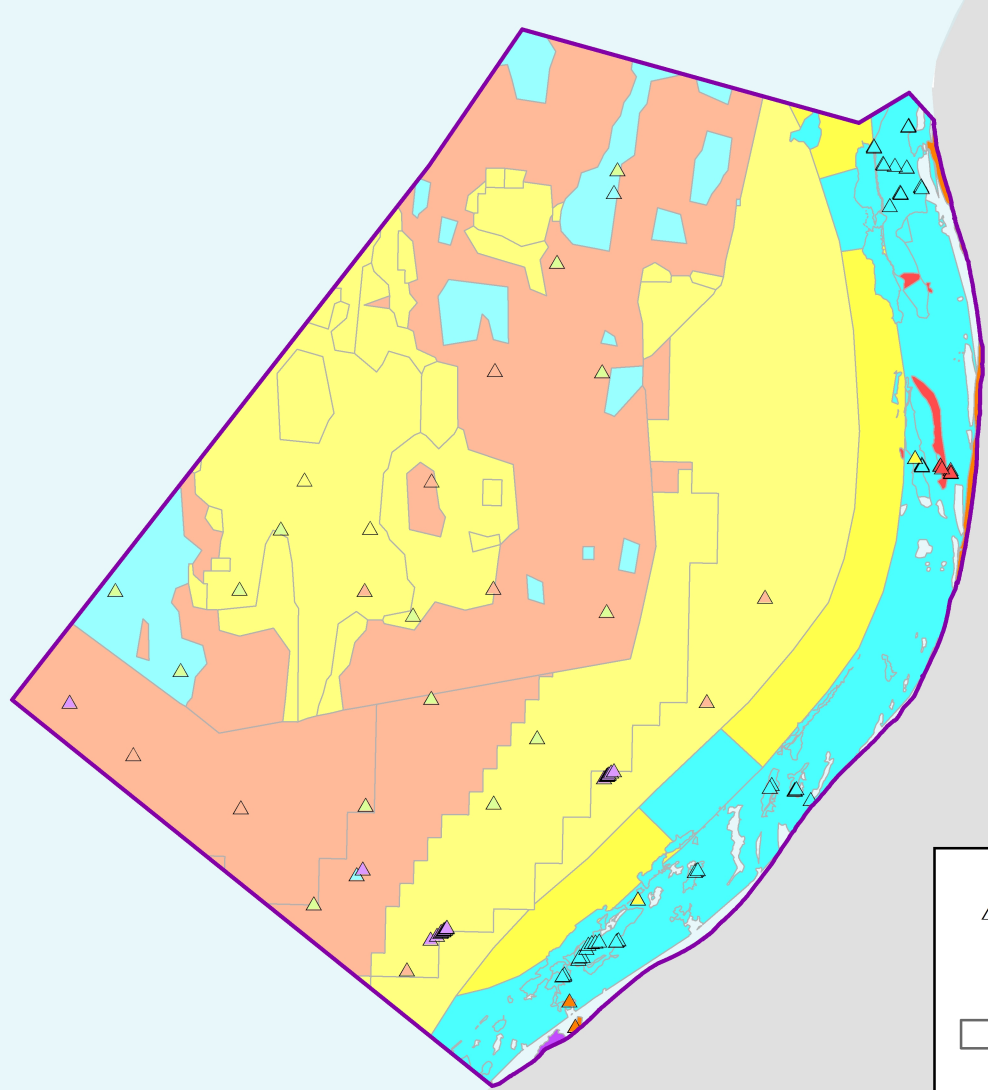
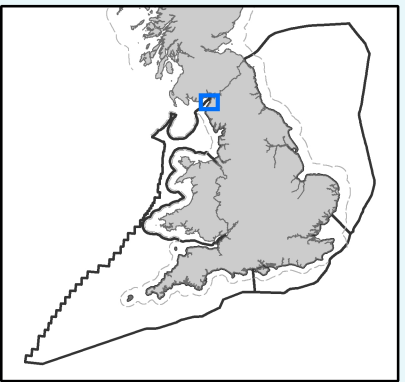
302500.000000

305000.000000

307500.000000

310000.000000

312500.000000



△ Groundtruthing sampling points, such as diver survey, grab sampling, drop down video, walk over survey or core sampling

□ Shaded areas represent habitats mapped according to data originating from surveys and mathematical models

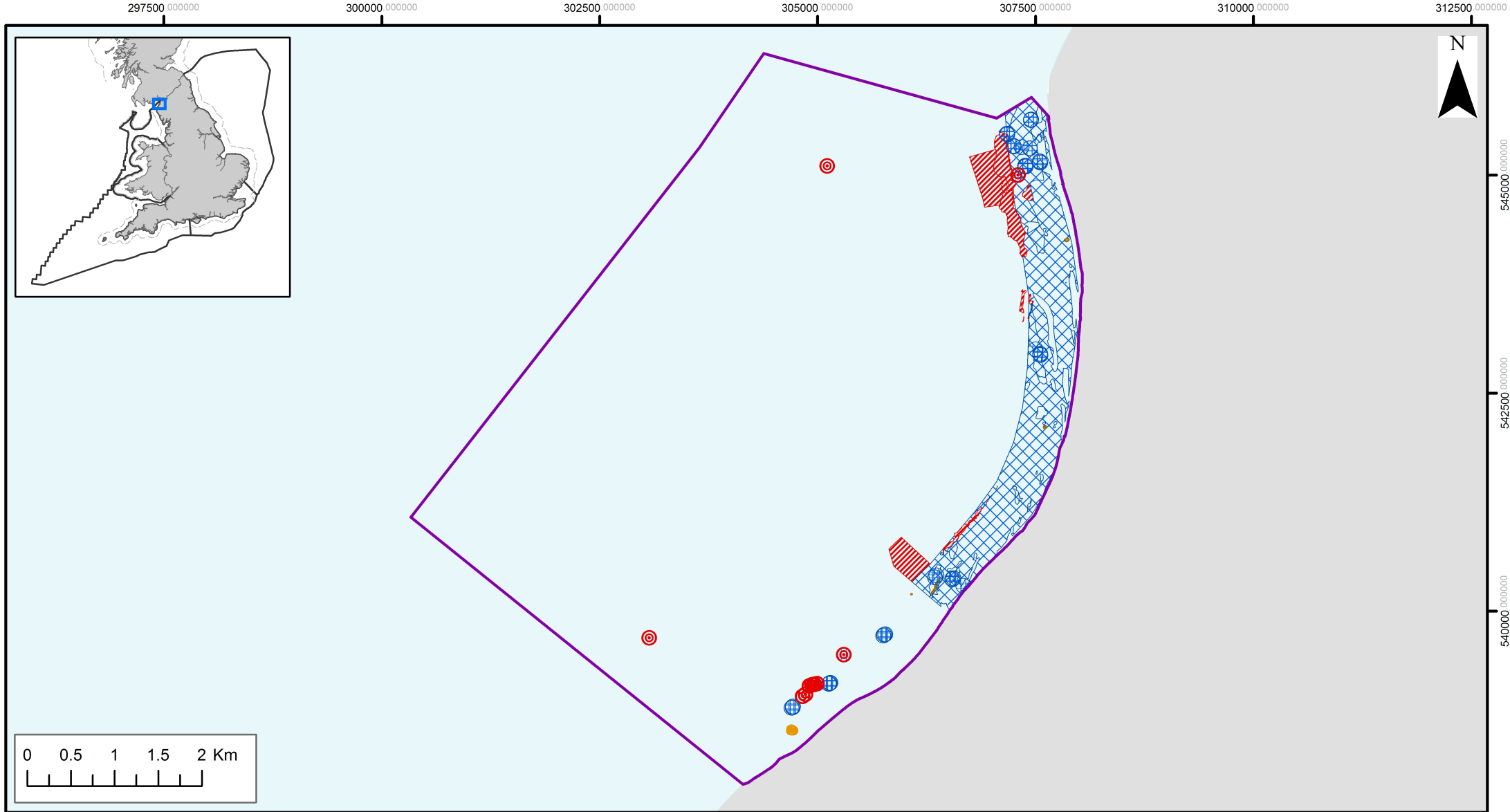
Allonby Bay MCZ Broad Scale Habitats

- Marine Conservation Zone
- Regional MCZ Project Area
- 12nM Territorial Seas Limit
- Sea
- Land

Features designated in 2016

- High energy intertidal rock (A1.1)
- Moderate energy intertidal rock (A1.2)
- Low energy intertidal rock (A1.3)
- Intertidal coarse sediment (A2.1)
- Intertidal sand and muddy sand (A2.2)
- Intertidal biogenic reefs (A2.7)
- Moderate energy infralittoral rock (A3.2)
- Subtidal coarse sediment (A5.1)
- Subtidal sand (A5.2)
- Subtidal mixed sediments (A5.4)
- Subtidal biogenic reefs (A5.6)

Contains information from the Ordnance Survey © Crown Copyright and database right 2015. Ordnance Survey 100022021. UKHO Data © British Crown Copyright. All rights reserved. Permission Number Defra012015.001. This product has been derived in part from material obtained from the UK Hydrographic Office with the permission of the Controller of Her Majesty's Stationery Office and UK Hydrographic Office (www.ukho.gov.uk). Map produced by Natural England 2015. Reference: Theme ID: 1475909 Map Projection: British National Grid



Allonby Bay MCZ
Features of Conservation Importance

- Marine Conservation Zone
- Regional MCZ Project Area
- 12nM Territorial Seas Limit
- Sea
- Land

Features designated in 2016

- | | |
|--|--|
| Blue Mussel Beds | Blue Mussel Beds |
| Honeycomb worm (<i>Sabellaria alveolata</i>) reefs | Honeycomb worm (<i>Sabellaria alveolata</i>) reefs |
| Peat and clay exposures | Peat and clay exposures |

Contains information from the Ordnance Survey
 © Crown Copyright and database right 2015.
 Ordnance Survey 100022021. UKHO Data
 © British Crown Copyright. All rights reserved.
 Permission Number Defra012015.001. This
 product has been derived in part from material
 obtained from the UK Hydrographic Office with
 the permission of the Controller of Her Majesty's
 Stationery Office and UK Hydrographic Office
 (www.ukho.gov.uk). Map produced by
 Natural England 2015.
 Reference: Theme ID: 1475909
 Map Projection: British National Grid



© Crown copyright 2016

You may re-use this information (excluding logos) free of charge in any format or medium, under the terms of the Open Government Licence v.3. To view this licence visit www.nationalarchives.gov.uk/doc/open-government-licence/version/3/ or email PSI@nationalarchives.gsi.gov.uk

This publication is available at www.gov.uk/government/publications

Any enquiries regarding this publication should be sent to us at

mcz@defra.gsi.gov.uk

PB 14413