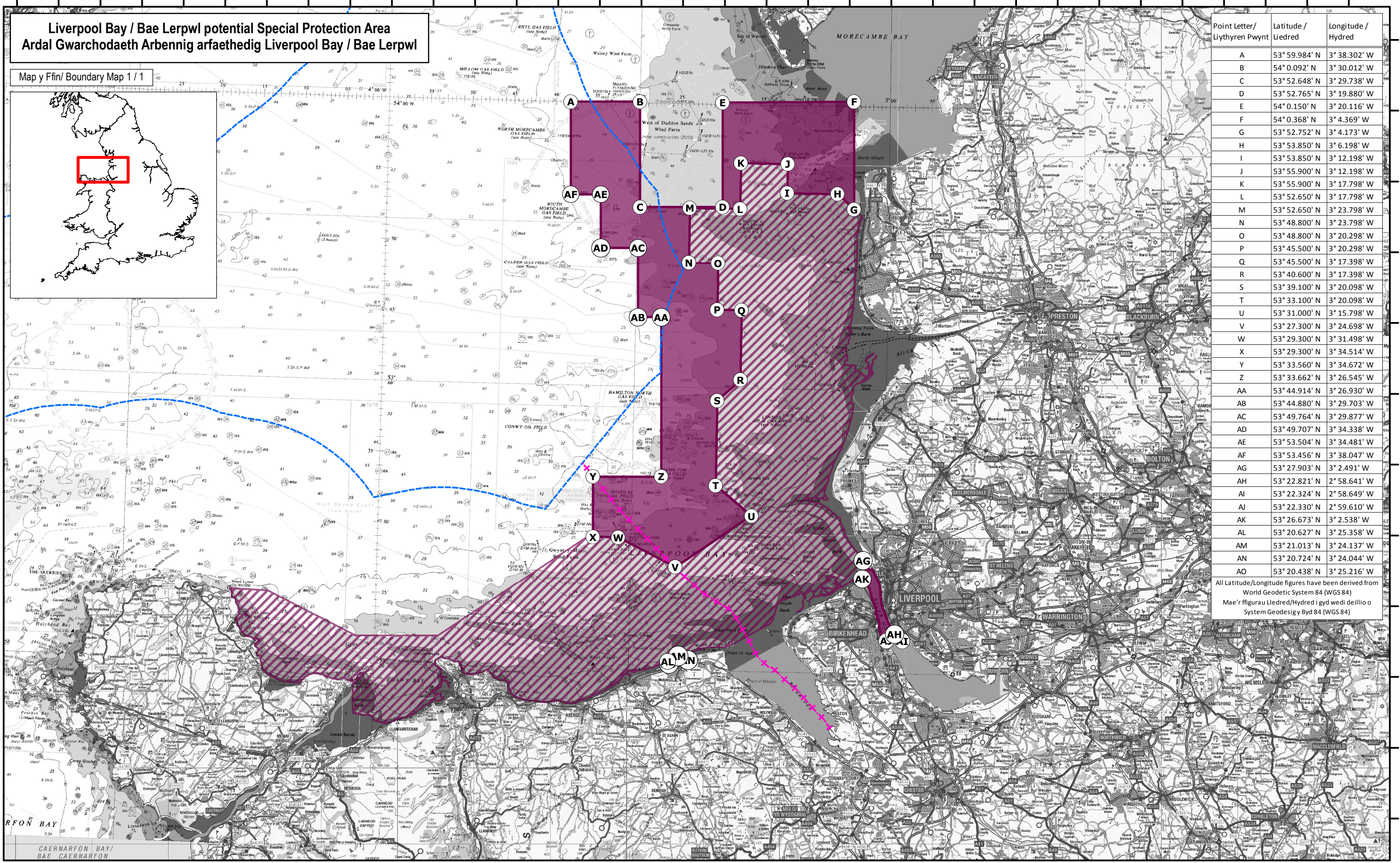
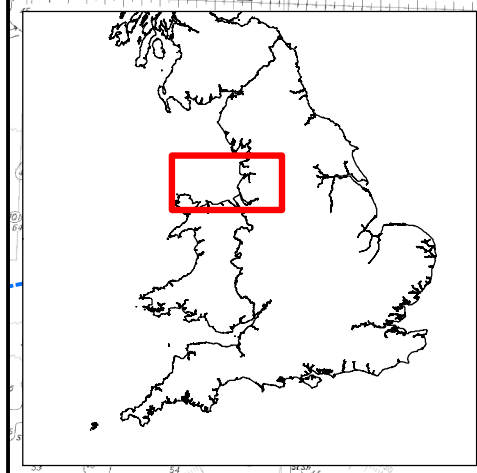


# Liverpool Bay / Bae Lerpwl potential Special Protection Area Ardal Gwarchodaeth Arbennig arfaethedig Liverpool Bay / Bae Lerpwl

Map y Ffin/ Boundary Map 1 / 1



Point Letter / Llythren Pwynt	Latitude / Liedred	Longitude / Hydred
A	53° 59.984' N	3° 38.302' W
B	54° 0.092' N	3° 30.012' W
C	53° 52.648' N	3° 29.738' W
D	53° 52.765' N	3° 19.880' W
E	54° 0.150' N	3° 20.116' W
F	54° 0.368' N	3° 4.369' W
G	53° 52.752' N	3° 4.173' W
H	53° 53.850' N	3° 6.198' W
I	53° 53.850' N	3° 12.198' W
J	53° 55.900' N	3° 12.198' W
K	53° 55.900' N	3° 17.798' W
L	53° 52.650' N	3° 17.798' W
M	53° 52.650' N	3° 23.798' W
N	53° 48.800' N	3° 23.798' W
O	53° 48.800' N	3° 20.298' W
P	53° 45.500' N	3° 20.298' W
Q	53° 45.500' N	3° 17.398' W
R	53° 40.600' N	3° 17.398' W
S	53° 39.100' N	3° 20.098' W
T	53° 33.100' N	3° 20.098' W
U	53° 31.000' N	3° 15.798' W
V	53° 27.300' N	3° 24.698' W
W	53° 29.300' N	3° 31.498' W
X	53° 29.300' N	3° 34.514' W
Y	53° 33.560' N	3° 34.672' W
Z	53° 33.662' N	3° 26.545' W
AA	53° 44.914' N	3° 26.930' W
AB	53° 44.880' N	3° 29.703' W
AC	53° 49.764' N	3° 29.877' W
AD	53° 49.707' N	3° 34.338' W
AE	53° 53.504' N	3° 38.481' W
AF	53° 53.456' N	3° 38.047' W
AG	53° 27.903' N	3° 2.491' W
AH	53° 22.821' N	2° 58.641' W
AI	53° 22.324' N	2° 58.649' W
AJ	53° 22.330' N	2° 59.610' W
AK	53° 26.673' N	3° 2.538' W
AL	53° 20.627' N	3° 25.358' W
AM	53° 21.013' N	3° 24.137' W
AN	53° 20.724' N	3° 24.044' W
AO	53° 20.438' N	3° 25.216' W

All Latitude/Longitude figures have been derived from World Geodetic System 84 (WGS 84)  
Mae'r ffigurau Lledred/Hydred i gyd wedi deillio o System Geodesig y Byd 84 (WGS 84)



- SPA Extension Boundary Coordinates Cyfesurynnau Estyniad Ffin yr AGA
- National Boundary/ Ffin Genedlaethol
- 12NM Territorial Sea Limit Terfyn Môr Tiriogaethol 12 milltir fôr
- Liverpool Bay SPA Proposed Extension 82481.03 Ha / Estyniad Arfaethedig AGA Bae Lerpwl 82481.03 Ha
- ▨ Previously Classified Liverpool Bay SPA 170,292.24 Ha / AGA Bae Lerpwl a ddsbarthwyd eisiesio 170,292.24 Ha

**Noder:** Mae fin yr estyniad rhynglanol arfaethedig, rhwng pwyntiau AG ac AH, AJ ac AK a phwyntiau AN ac AO yn deillio o MasterMap ar raddfa fawr yr Arolwg Ordnans. Mae'r ehangder tua'r lîr rhwng y pwyntiau uchod yn dilyn Marc Penllanw Cymedrig OS MasterMap, a gall newid, ac efallai nad yw'n cyfateb â'r manylion cefndrol ar y map hwn. Mae mapiau diffinol ar raddfa fwy ar gael ar gais.

**Note:** The boundary of the proposed intertidal extensions, between points AG and AH, AJ and AK and points AN and AO is derived from large scale Ordnance Survey MasterMap. The landward extent between the above points follows OS MasterMap Mean High Water, is liable to change and may not match the background detail on this map. Definitive larger scale maps are available on request.

**Algynhyrchwyd gyda chaniatâd yr Arolwg Ordnans ar ran Llyfrfa ei Mawrhydi.** © Hawffraint y Goron a hawl cronfa ddata 2016. Cedwir pob hawl. Rhif trwydded Arolwg Ordnans 100022021. © Hawffraint y Goron Brydeinig 2016. NID AT DDEFNYDD MORDWYO. Cedwir pob hawl. Rhif caniatâd Defra 01201301. Mae'r cynnyrch hwn wedi deillio'n rhannol o ddeunydd a gafwyd gan Swyddfa Hydrograffeg y DU gyda chaniatâd Rheolwr Llyfrfa Ei Mawrhydi a Swyddfa Hydrograffeg y Deyrnas Unedig. (www.ukho.gov.uk). © Natural England 2016.

Reproduced by permission of Ordnance Survey on behalf of HMSO. © Crown copyright and database right 2016. All rights reserved. Ordnance Survey Licence number 100022021. © British Crown Copyright 2016.

NOT TO BE USED FOR NAVIGATION. All rights reserved. Permission Number Defra 012013.001. This product has been derived in part from material obtained from the UK Hydrographic Office with the permission of the Controller of Her Majesty's Stationery Office and UK Hydrographic Office (www.ukho.gov.uk). © Natural England 2016

0 5 10 20 Km  
0 2.5 5 10 NM

Scale/ Graddfa 1:450,000 correct at/ cywir ar A3

Projection/ Taffuniad: Transverse Mercator Andruws Mercator

Coordinate System / System Gyfesurynnau: British National Grid Y Grid Cenedlaethol Prydeinig

EU Site Code/ Cod Safle y GE: UK9020294  
Site Version/ Fersiwn Safle: 20150317  
Map Version/ Fersiwn Map: 3.0  
Grid Ref/ Cyfeirnod Grid: SD089305  
Longitude/ Hydred: 3° 22' 56" W  
Latitude/ Lledred: 53° 45' 49" N