

Department for Environment, Food and Rural Affairs

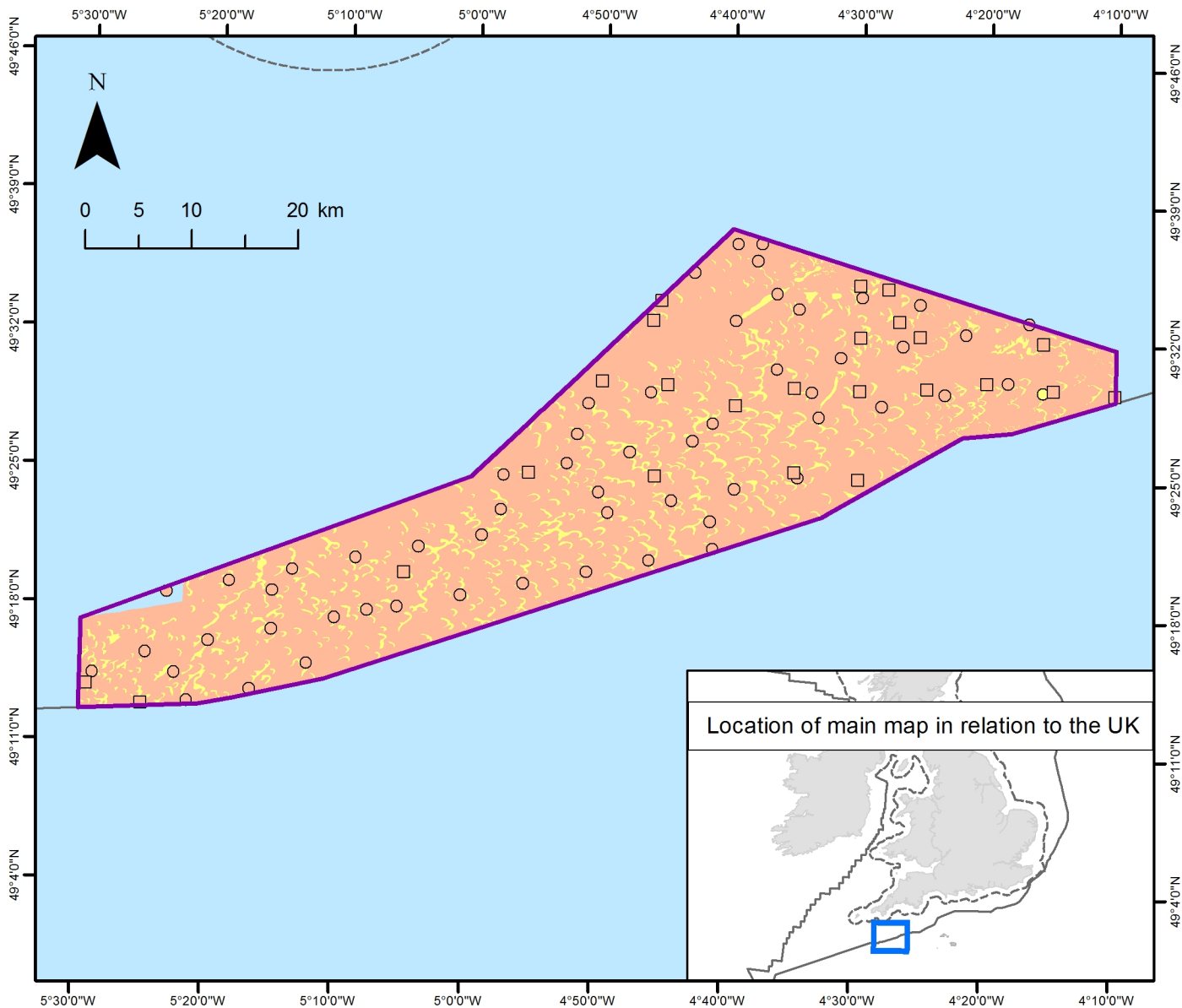
Western Channel MCZ

Feature Map

17 January 2016

The following map shows where the features protected by this Marine Conservation Zone (MCZ) are located. A range of different types of surveys have been used to create this map. More detailed information on the techniques used and the features themselves can be found here: <http://jncc.defra.gov.uk/page-6658>

Western Channel MCZ



Legend

- MCZ boundary
- Territorial Sea Limit
- UK Continental Shelf

Cefas led survey (MB0120) grab samples

- Subtidal coarse sediment
- Subtidal sand

Cefas led survey (MB0120) habitat map

- Subtidal coarse sediment
- Subtidal sand

British Geological Survey sample points

- Subtidal coarse sediment

2012 MB0120 survey data ©JNCC/Cefas. UK Territorial Sea Limit. Contains UKHO data © Crown copyright. All rights reserved. The exact limits of the UK Continental shelf are set out in orders made under section 1 (7) of the Continental Shelf Act 1964 and Continental Shelf (Designation of Areas) Order 2013. Combining source layers from UKHO. © Crown copyright © JNCC. Contains British Geological Survey materials © NERC 2015. Not to be used for navigation. © JNCC 11/2015

Version: 2.2 Plotted: 04/11/15 by CM

The Cefas led survey image and grab samples were taken on the Cefas survey in 2012. The Cefas led survey habitat map was derived from acoustic data and grab samples taken on this survey. Note, Cefas habitat map does not cover entirety of site as acoustic data were not gathered for entire site area. A modelled map for this small section of unmapped area has not been displayed in order to avoid confusion. The British Geological Survey PSA data were downloaded from http://mapapps2.bgs.ac.uk/geoindex_offshore/home.html and translated into EUNIS. More detailed advice available from the JNCC advice documents found here: <http://jncc.defra.gov.uk/page-6658>



© Crown copyright 2016

You may re-use this information (excluding logos) free of charge in any format or medium, under the terms of the Open Government Licence v.3. To view this licence visit www.nationalarchives.gov.uk/doc/open-government-licence/version/3/ or email PSI@nationalarchives.gsi.gov.uk

This publication is available at www.gov.uk/government/publications

Any enquiries regarding this publication should be sent to us at

mcz@defra.gsi.gov.uk

PB 14404