



13th October 2016

United Kingdom Slaughter Statistics – September 2016

Contents

Section 1	Monthly numbers of home killed livestock slaughtered	page 2
Section 2	Average dressed carcase weights	page 2
Section 3	Monthly volumes of home killed meat production	page 3
Section 4	Average weekly numbers of livestock slaughtered	page 3
Section 5	Monthly numbers of livestock slaughtered by country	page 5
Section 6	Methodology, notes and revisions policy	page 6

Key points

From February 2016 onwards data collection moved from a statistical month to a calendar month basis. Year on year comparisons are therefore calculated using the daily average for throughput and production to account for the varied number of days in each period.

The key results for **September 2016 compared to September 2015** are:

- **Cattle:** UK prime cattle (steers, heifers and young bulls) slaughterings in September 2016 were 8.5% higher than September 2015 at 165,000 head. Beef and veal production was 76,000 tonnes, 8.1% higher than in September 2015.
- **Sheep:** UK clean sheep slaughterings were 8.6% lower than in September 2015 at 1.3 million head. Mutton and lamb production was 28,000 tonnes, 9.2% lower than in September 2015.
- **Pigs:** UK clean pig slaughterings were 2.6% higher than in September 2015 at 910,000 head. Pigmeat production was 78,000 tonnes, 3.9% higher than in September 2015.

This notice will be updated at 09:30 on 17th November 2016. Additional time series which include weekly slaughter averages, production and trade data can be found at <https://www.gov.uk/government/statistics/cattle-sheep-and-pig-slaughter>

Enquiries on this publication to: Ben Drummond, Department for Environment, Food and Rural Affairs, Room 201, Foss House, Kings Pool, 1 - 2 Peasholme Green, York, YO1 7PX.
Tel: ++ 44 (0)2080 266157, email: ben.drummond@defra.gsi.gov.uk

A National Statistics publication. National Statistics are produced to high professional standards. They undergo regular quality assurance reviews to ensure that they meet customer needs. They are produced free from any political interference. For general enquiries about National Statistics, contact the National Statistics Public Enquiry Service: tel. 0845 601 3034 email info@statistics.gov.uk. You can also find National Statistics on the internet at <http://www.statistics.gov.uk/>.

Section 1: Monthly numbers of home killed livestock slaughtered

Table 1 shows monthly estimates of the number of home killed cattle, sheep and pigs, slaughtered as meat for human consumption in UK abattoirs. From February 2016 onwards, the survey is run according to calendar rather than statistical months. To allow a direct comparison with 2015 data which was based on a statistical month, the number of days in each period is specified below and comparisons are based on average daily throughput in the month.

Table 1: United Kingdom monthly numbers of livestock slaughtered thousand head

	September 2015 28 days	July 2016 31 days	August 2016 31 days	September 2016 30 days	yr on yr % change *
Steers	75	78	80	87	8.0%
Heifers	50	54	53	58	9.2%
Young Bulls	17	25	22	20	8.9%
Cows and Adult Bulls	49	52	52	60	14%
Calves(1)	10	7	10	13	26%
Clean Sheep	1294	1102	1196	1267	-8.6%
Ewes and Rams	171	136	157	181	-1.2%
Clean Pigs	828	864	897	910	2.6%
Sows and Boars	20	19	20	23	5.4%

(1) The definition of calves from May 2014 is "Bovines less than 1 year". Please see methodology for full details.

*Calculated using average daily throughput in each month.

Section 2: Average dressed carcass weights

Table 2 shows the monthly average dressed carcass weight of livestock slaughtered for meat for human consumption in the United Kingdom.

Table 2: United Kingdom average dressed carcass weights kilogramme

	September 2015	July 2016	August 2016	September 2016
Steers	372.7	371.9	367.1	368.3
Heifers	330.9	332.0	329.8	325.0
Young Bulls	340.9	344.7	344.0	324.2
Cows and Adult Bulls	309.6	310.6	309.6	303.3
Calves(1)	59.0	110.1	84.6	67.1
Clean Sheep	19.0	18.9	19.0	18.9
Ewes and Rams	26.5	25.9	25.8	24.3
Clean Pigs	81.0	80.5	80.8	82.0
Sows and Boars	146.5	146.1	149.0	146.9

(1)The definition of calves from May 2014 is "Bovines less than 1 year". Please see methodology for full details.

Section 3: Monthly volumes of home killed meat production

Table 3 shows the monthly volumes of meat produced in UK abattoirs. From February 2016 onwards, the survey is run according to calendar rather than statistical months. To allow a direct comparison with 2015 data which was based on a statistical month, the number of days in each period is specified below.

Table 3: United Kingdom monthly volumes of meat production thousand tonnes

	September 2015 28 days	July 2016 31 days	August 2016 31 days	September 2016 30 days	yr on yr % change
Beef	66	72	72	76	8.1%
Mutton and Lamb	29	24	27	28	-9.2%
Pigmeat	70	72	75	78	3.9%

Section 4: Average weekly numbers of home killed livestock slaughtered

Table 4 shows the average weekly slaughter figures for the last thirteen months. The monthly slaughter figures in section one are affected by the number of days in the survey period. To get a clearer measure of trends weekly averages are calculated using the number of livestock slaughtered and the number of days in each period.

Longer term trends can be seen in Figures 4:1, 4:2 and 4:3, following this table.

Table 4: United Kingdom average weekly numbers of livestock slaughtered thousand head

	2015					2016								
	Aug	Sep	Oct	Nov	Dec	Jan	Feb	Mar	Apr	May	June	Jul	Aug	Sep
Steers	18	19	21	22	20	18	20	20	21	18	19	18	18	20
Heifers	12	12	14	15	15	13	15	14	14	13	14	12	12	14
Young Bulls	5	4	4	4	3	3	3	3	4	5	6	6	5	5
Cows and Adult Bulls	12	12	14	16	13	12	13	12	12	10	11	12	12	14
Calves(1)	2	2	2	2	2	2	3	4	2	2	2	2	2	3
Clean Sheep	282	324	275	274	290	209	207	228	197	193	233	249	270	296
Ewes and Rams	33	43	34	32	32	29	33	32	30	29	31	31	35	42
Clean Pigs	205	207	217	222	211	194	212	208	208	194	202	195	203	212
Sows and Boars	5	5	5	5	4	5	5	5	5	5	5	4	4	5

(1)The definition of calves from May 2014 is "Bovines less than 1 year". Please see methodology for full details.

Figure 4:1 United Kingdom average weekly numbers of cattle slaughtered

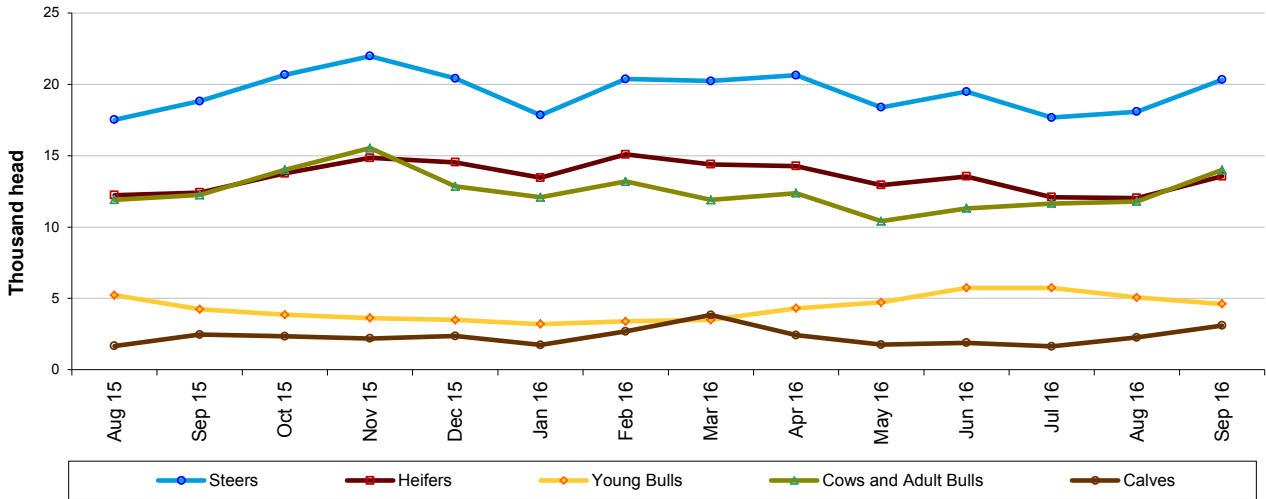


Figure 4:2 United Kingdom average weekly numbers of sheep slaughtered

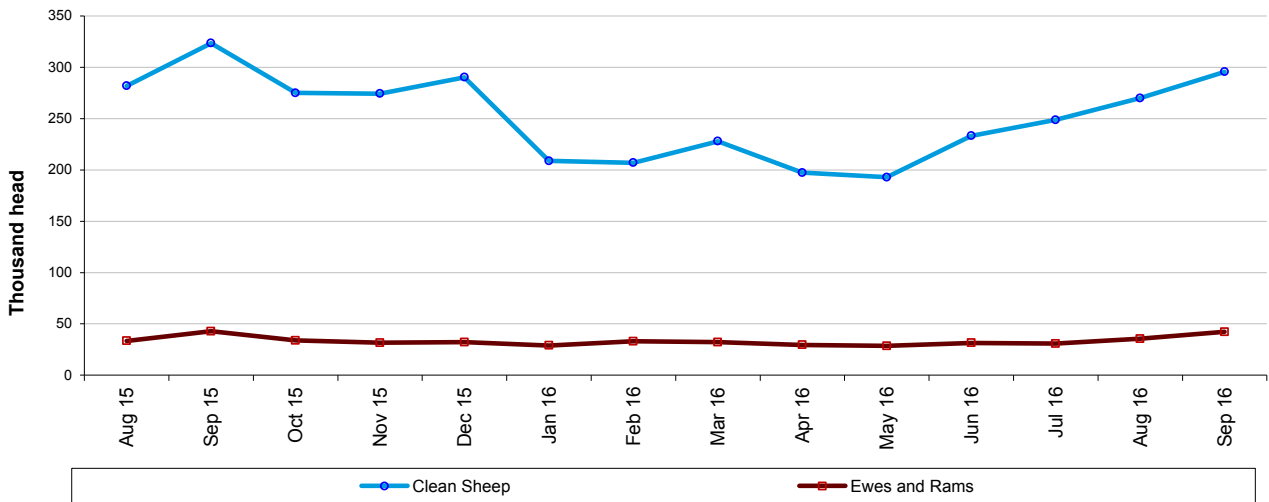
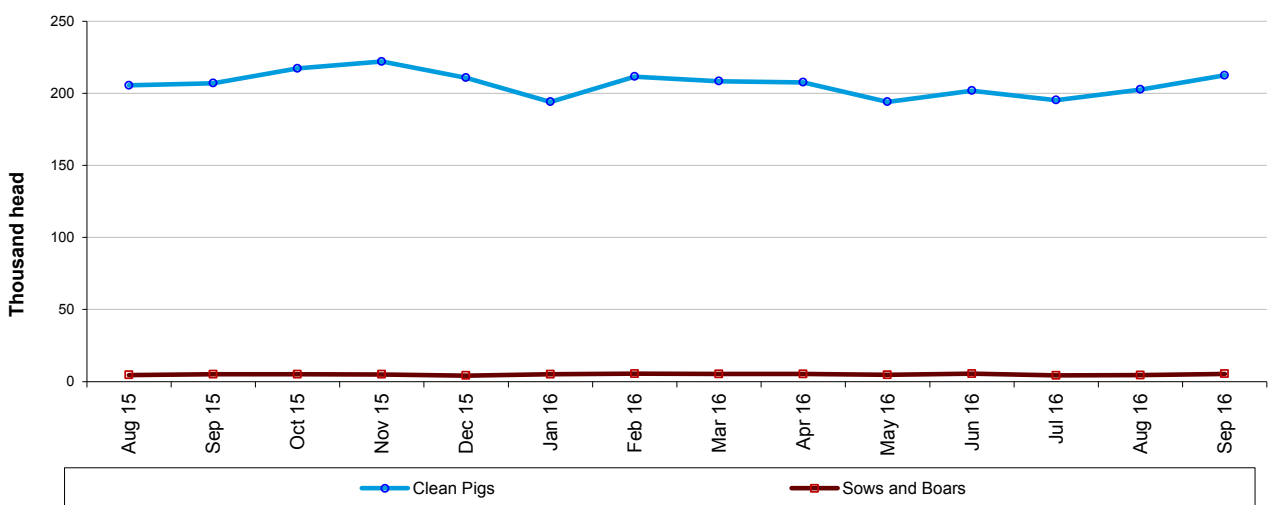


Figure 4:3 United Kingdom average weekly numbers of pigs slaughtered



Section 5: Monthly numbers of home killed livestock slaughtered by country

Table 5 shows monthly estimates of the number of cattle, sheep and pigs slaughtered for meat in England and Wales, Scotland, Great Britain and Northern Ireland.

Table 5: United Kingdom monthly numbers of livestock slaughtered by country

	thousand head		
	July 2016	August 2016	September 2016
	31 days	31 days	30 days
England & Wales			
Steers	50	51	55
Heifers	35	34	38
Young Bulls	16	15	14
Cows and Adult Bulls	37	37	44
Calves	7	9	13
Clean Sheep	972	1035	1105
Ewes and Rams	133	154	176
Clean Pigs	716	743	749
Sows and Boars	19	20	23
Scotland			
Steers	17	17	17
Heifers	11	11	12
Young Bulls	5	4	3
Cows and Adult Bulls	6	6	7
Calves	0	0	0
Clean Sheep	83	108	112
Ewes and Rams	1	1	1
Clean Pigs	24	24	28
Sows and Boars	0	0	0
Great Britain			
Steers	68	68	73
Heifers	46	45	49
Young Bulls	22	19	17
Cows and Adult Bulls	43	44	51
Calves	7	9	13
Clean Sheep	1056	1143	1217
Ewes and Rams	134	155	178
Clean Pigs	739	767	777
Sows and Boars	19	20	23
Northern Ireland			
Steers	11	12	14
Heifers	8	8	9
Young Bulls	4	3	3
Cows and Adult Bulls	9	8	9
Calves	1	1	1
Clean Sheep	47	53	50
Ewes and Rams	2	2	3
Clean Pigs	125	131	133
Sows and Boars	0	0	0

Section 6: Data users, methodology, Definitions and revisions policy

Data users

1. Users of the data include the EU Commission where these slaughtering statistics are required monthly under Regulation no. EC.1165/2008. Detailed information on this legislation is available by selecting “Animal Production” at <http://epp.eurostat.ec.europa.eu/portal/page/portal/agriculture/legislation>. European level statistics on meat products (which includes data tables showing results at EU Member State level) are available at http://epp.eurostat.ec.europa.eu/statistics_explained/index.php/Agricultural_products#Meat_and_milk
2. The livestock industry is also a major user of the data, including divisions of the Agriculture and Horticulture Development Board (AHDB). AHDB Pork (formally known as BPEX, representing the English pig industry) and AHDB Beef and Lamb (formerly EBLEX, representing the English beef and sheep industry). Industry users rely heavily on the numbers of slaughterings and meat production to assess the current state of the industry and predict the available supplies of meat for the coming year. This, in turn, can affect meat prices and trade decisions on levels of imports and exports to maintain supply. Users have always been very keen for the slaughtering statistics to be produced as quickly as possible so that the data is still relevant. For this reason, we collect and publish these statistics to a very tight timetable, publishing within three weeks of the survey date. The “Market Intelligence” and “Market Outlook” Reports on the AHDB Beef and Lamb website refer consistently to our statistics at <http://beefandlamb.ahdb.org.uk/markets/> The AHDB Pork site provides more in-depth analysis of pigmeat production statistics at <http://pork.ahdb.org.uk/prices-stats/>
3. Contact details are available on the front page of this notice, for you to send feedback or ask questions about the information provided.

Methodology

4. Defra runs a monthly survey of registered England and Wales slaughterhouses. It is a statutory survey (approximately 97) that collects information on livestock slaughter numbers and weight of meat produced. All major slaughterhouses participate in the survey and the response rate is typically 100%. Similar surveys are run by RERAD in Scotland and by DAERA in Northern Ireland. Scottish statistics on livestock slaughterings are available in the Economic Report on Scottish Agriculture at <http://www.scotland.gov.uk/Topics/Statistics/Browse/Agriculture-Fisheries/PubEconomicReport> (Tables A5 and A6). This website also contains contact details and more information. Northern Ireland results are available at <https://www.daera-ni.gov.uk/articles/slaughtering-cattle-and-sheep> and <https://www.daera-ni.gov.uk/articles/slaughtering-pigs-2003>
5. The England and Wales slaughter survey accounts for around 90% of the E&W slaughterhouse throughput for each livestock type. These data are supplemented by administrative data for smaller slaughterhouses to give complete monthly coverage of livestock slaughterings.
6. Information on the weight of meat produced from a sample of animals weighed at slaughterhouses is obtained from survey respondents, around 55 slaughterhouse

respondents. From the information provided average dressed carcass weights for each animal type are primarily calculated by adding up the total weight of the meat produced and dividing by the number of animals weighed. Cold dressed carcass weights are recorded.

7. The volume of meat production is estimated from the number of all livestock slaughtered and average dressed carcass weight information collected. This total 'Home killed' production includes livestock imported into the United Kingdom for slaughter.
8. The data are subject to a variety of validation checks which identify inconsistencies in the data. All data are cleaned prior to publication in discussion with the survey respondents.
9. With effect from February 2016 the statistics published in this notice are based on calendar rather than statistical months. This change simplifies our survey processes and brings our slaughter survey in line with our milk surveys which are already run on a calendar month basis; it also removes the need for the 53 week year (which would have to be 2016). Since the end of weekly slaughter survey several years ago, there is no legislative requirement for weekly data, so since then we have derived the average weekly throughput from the monthly survey data.
10. The January 2016 data will include the last week of December 2015 and therefore be classed as a 5 week month. From 1st February 2016 onwards the statistics are based on calendar months.

Definitions

11. Steers (or Bullocks): Castrated males over 1 year old, raised for beef.

Heifers: Female animals that have not calved. Over 1 year old, raised for beef.

Young bulls: Non-castrated young males, raised for beef, generally slaughtered around 13 months old.

Prime cattle: All those raised specifically for beef production. Total of Steers + Heifers + Young Bulls.

Breeding bulls: Older cull males, previously used for breeding

Cows: Older cull females, previously used for breeding

Calves: All bovine animals aged 1 year old or younger. Prior to May 2014, the definition was "animals weighing less than 165kg".

Revisions policy

12. Figures in this notice are provisional and subject to revision. We will provide information about any revisions we make to previously published information in this statistics notice and the associated datasets. Revisions could occur for various reasons, including:

- a. if we have not received survey data from respondents we make an estimate based on their previous returns. These estimates will be replaced with actual survey data when it is received.
 - b. survey respondents occasionally supply amended figures for previous periods.
 - c. if we have not received administrative data for the smaller slaughterhouses we make an estimate based on previous data received. These estimates will be replaced with actual data when it is received.
- 13. This month there have been revisions to the slaughter and DCW data from January 2016. This is due to revised Scottish data as well as some actual E&W survey data replacing estimates.**