

**SFR 18/2010**

**22 June 2010**

**Coverage:**

**Theme: Children,  
Education and Skills**

**Issued by**

Department for Education  
Sanctuary Buildings  
Great Smith Street  
London SW1P 3BT

**Telephone:**

**Press Office**

020 7925 6789

**Public Enquiries**

0870 000 2288

**Statistician**

Michael Greer

0114 274 2462

**Email**

[info@education.gsi.gov.uk](mailto:info@education.gsi.gov.uk)

**Internet**

<http://www.education.gov.uk/rsgateway/DB/SFR/s000938/index.shtml>

## **PARTICIPATION IN EDUCATION, TRAINING AND EMPLOYMENT BY 16-18 YEAR OLDS IN ENGLAND**

### **INTRODUCTION**

1. This Statistical First Release (SFR) provides provisional end 2009 estimates of participation in education, training and employment and those who are not in education, employment or training (NEET) for 16, 17 and 18 year olds in England. It also updates estimates for end 2008 contained in SFR 12/2009 (released in June 2009).
2. Information from the different post-16 learning options (schools, Further Education (FE) colleges, Work Based Learning (WBL), Higher Education, etc) have been drawn together to give a coherent and comprehensive picture of the participation of 16-18 year olds. Key analyses are by age, gender, type of learning, institution, labour market status and highest qualification being studied.
3. Additional tables providing more detailed breakdowns, and the complete time series back to 1985, are available on the website.
4. Additional tables of local estimates of participation and training by 16 and 17 year olds for end 2008 by Local Authority (LA) and government office region are available. They contain a time series back to 1994.
5. There are differences between the content and the way figures are put together for the local and national estimates, these differences are detailed in Box C.

### **KEY POINTS**

#### **16-18 year olds**

- The proportion of 16-18 year olds in education and training was 82.1 per cent at end 2009 – the highest ever rate and an increase of 2.5 percentage points from 79.7 per cent at end 2008. The total **number** of 16-18 year olds in education and training increased by 27,000 to 1.63 million at end 2009, the highest number ever.
- The proportion of 16-18 year olds not in education, employment or training (NEET) decreased; from 10.3 per cent at end 2008 to 9.6 per cent at end 2009. This occurred despite a drop in employment amongst young people not in education or training. In 2008, 50 per cent of those young people not in education or training were in work. In 2009, this had fallen to 46 per cent.

### **16 year olds**

- The proportion of 16 year olds, the first post-compulsory year, in full-time education at the end of 2009 is estimated at 84.8 per cent – the highest ever rate and an increase of 2.2 percentage points since end 2008.
- At end 2009, 95.0 per cent of 16 year olds were participating in education and training, an increase of 1.6 percentage points from end 2008. The corresponding proportion at end 1994 was 90.9 per cent.

### **17 year olds**

- Participation in full-time education by 17 year olds was 72.8 per cent at end 2009 - the highest ever rate and an increase of 4.1 percentage points since end 2008.
- At end 2009, 87.8 per cent of 17 year olds were participating in education and training, an increase of 3.8 percentage points from end 2008. The corresponding proportion at end 1994 was 82.4 per cent.

### **18 year olds**

- Participation in full-time education by 18 year olds at end 2009 was 46.3 per cent, the highest ever rate and an increase of 2.7 per cent from end 2008. Participation in education and training at end 2009 was 64.7 per cent compared to 62.3 per cent at end 2008 and 61.0 per cent at end 1994.

### **Government Office Region**

- Full-time education rates were generally higher in the South of the country than in the North. For participation in Young People's Learning Agency (YPLA) funded WBL, it was the other way round with the North higher. Overall participation in education and Work Based Learning for 17 year olds varies from 76 per cent in Yorkshire and the Humber to 89 per cent in London.

## NOTES TO EDITORS

6. The estimates of participation in education, training and employment combine data from a number of sources, with procedures to identify young people in more than one form of provision, to give a view of the cohort as a whole.

### A. DEFINITIONS

#### Academic Age

7. The age of a learner is measured at the beginning of the academic year, 31 August.

#### Reference Dates

8. The population, schools and work based learning (WBL) data described as end 2009 relate to January 2010; Further Education Institution (FEI) data relate to November 2009; and Higher Education Institution (HEI) data relate to December 2009. The Labour Force Survey (LFS) relates to Quarter 1 2010 (January to March 2010). The end 2008 figures for the different data sources similarly refer to the same months.

9. The figures for end 2009 are provisional. The figures for end 2008 have been updated with revised figures from all sources. Sources are presented more fully under section B.

#### Education

10. The definition of full-time education varies according to institution type:

- **Schools:** a full-time pupil is someone studying 10 sessions a week, where a session is 1/2 day. Prior to 2002, all pupils were recorded as full-time; in practice, almost all pupils in schools are full-time and the numbers of part-time pupils are too small to register once rounding has been applied to the tables.
- **FEIs:** full-time full-year learners are defined as those enrolled on programmes of at least 450 guided learning hours per year, or for at least 150 guided learning hours per tri-annual period, or more than 16 guided learning hours per week for shorter courses. See [www.ypla.gov.uk](http://www.ypla.gov.uk) for more information.
- **HEIs:** full-time full-year students are defined as those studying 21 hours a week for 24 weeks. Full-time students who are not classified as full-time full-year are classified as 'other full-time'. See [www.hesa.ac.uk](http://www.hesa.ac.uk) for more information.

11. Full-time learners in private further and higher education establishments are excluded from full-time education, but included (but not reported separately) in 'other education and training' (OET).

12. Young people studying a FE course in addition to taking part in WBL in the same FEI, are included in both full-time education and WBL, but are also reported separately as the overlap group and are only counted once in the totals. Those doing WBL in FEIs are in the WBL information only. Others in publicly funded full-time education while in Employer Funded Training (EFT) are included in full-time education but not reported separately; they are not included in the EFT figures.

13. In a methodological revision for this SFR young people studying a FE course in a HEI (but funded by the YPLA and so appearing in the FE data collection) are included in the FE learner numbers. This

revision applies to end 2007 onwards; prior to 2007 provision of this type was zero or negligible. The impact on end 2007 was to increase FE learner numbers at age 16-18 by 7,500.

### **Government Supported Work Based Learning for Young People (WBL)**

14. WBL for young people comprises Advanced Apprenticeships, Apprenticeships, Entry to Employment (E2E), and other WBL related learning. Since April 2010 WBL for 16-18 year olds has been funded through the Young People's Learning Agency (YPLA), and prior to that the Learning and Skills Council (LSC) from April 2001.

### **Employer Funded Training (EFT)**

15. Figures for EFT cover employees who have received training in the past 4 weeks; these figures are restricted to training other than WBL. They will include non-WBL apprentices and others on long and short term training programmes, but exclude those who have previously received training in their current job, though not in the last 4 weeks. They cover only young people who are in employment.

### **Other Education and Training (OET)**

16. OET covers young people who are studying, but are not included in other categories. For example: those attending private colleges or training centres; at any college in part-time study not reported as released from a job; or receiving training or in part-time education but not currently employed.

### **Labour market status**

17. The definitions of labour market status used in the Labour Force Survey (LFS), and in this publication, follow the conventions promoted by the International Labour Organisation (ILO):

- **in employment:** an employee, self-employed, on a WBL programme or an unpaid family worker. This includes young people in full-time education who also have part-time jobs.
- **ILO unemployed:** anyone (including full-time learners) who is out of work and available to start work in the next two weeks, but has either looked for work in the last four weeks or is waiting to start a job they have already obtained.
- **economically inactive:** neither in employment nor ILO unemployed i.e. not active in the labour market.

18. The LFS covers all residential households and nursing accommodation. Householders are asked to reply on behalf of students living away in halls of residence. The LFS excludes people outside such accommodation - chiefly hospital residents, people in prison, people in army barracks and the homeless.

19. The LFS is a sample survey so all estimates of labour market participation are subject to sampling error, as are the estimates for the non-college based components of EFT and OET.

### **Not in education, employment or training (NEET)**

20. To produce NEET estimates we firstly calculate the number of young people that are not in education or training (NET), by subtracting the number of young people known to be in education and training from the total population. We then use the LFS to estimate what proportion of that residual NET group is NEET.

## Courses of study (Table 4)

21. Table 4 includes a breakdown by course of study, which is categorised as shown below. The second list gives the hierarchy of qualification aim used for pupils in independent schools; the first list is used for learners in all other types of institution. Learners in full-time education studying on more than one course are attributed to the course appearing first in the list below. Young people in special schools and Pupil Referral Units (PRUs), for whom there is no qualification breakdown, are included under 'Other courses' in Table 4.

### All institutions, except independent schools:

<u>Course studied in order of selection:</u>	<u>Entered in tables to the row headed:</u>
Higher education	Higher education
NVQ 3	NVQ 3
GCE/VCE A/AS level <sup>1</sup>	GCE/VCE A/AS level
Other courses at level 3 or equivalent <sup>2</sup>	NVQ 3 equivalents
NVQ 2	NVQ 2
GCSE / Intermediate GNVQ	GCSE / Intermediate GNVQ
Other courses at level 2 or equivalent <sup>2</sup>	NVQ 2 equivalents
NVQ 1	NVQ 1
Foundation GNVQ	Foundation GNVQ
Other courses at level 1 or equivalent <sup>2</sup>	NVQ 1 equivalents
Other course – level unknown or unspecified	Other courses

### Independent schools:

<u>Course studied in order of selection:</u>	<u>Entered in tables to the row headed:</u>
Higher education	Higher education
VCE A/AS level/Advanced GNVQ	GCE/VCE A/AS level
Other courses at level 3 or equivalent <sup>2</sup>	NVQ 3 equivalents
NVQ 3	NVQ 3
GCE A level	GCE/VCE A/AS level
GCE AS level	GCE/VCE A/AS level
Intermediate GNVQ	GCSE / Intermediate GNVQ
Other courses at level 2 or equivalent <sup>2</sup>	NVQ 2 equivalents
NVQ 2	NVQ 2
Foundation GNVQ	Foundation GNVQ
NVQ 1	NVQ 1
GCSE	GCSE / Intermediate GNVQ
Other course – level unknown or unspecified	Other courses

<sup>1</sup> Including GCE A/AS levels in applied subjects

<sup>2</sup> Including GNVQ precursors, BTEC, City and Guilds and RSA courses

## B. DATA SOURCES

### Box A: Data Sources for National Estimates

Schools	<p>The Schools' Census provides data on school pupils in January of each year. Information for maintained schools, City Technology Colleges (CTCs), Academies and special schools are derived from the Pupil Level Annual Schools' Census (PLASC). PLASC collects data at pupil rather than school level; the first time in January 2002. Data from the remaining types of institution (independent schools and pupil referral units) are collected at school level.</p> <p>The schools figures for end 2009 and 2008 are final.</p>
FE Institutions	<p>The Young People's Learning Agency's Individualised Learner Record (ILR) provides data on learners in FE sector colleges. Snapshot data as at 1 November has been used. The data underlying this SFR are the same as for the Statistical First Release (DS/SFR6) published by FE Data Service on 22 April 2010.</p> <p>The ILR data for 2009 is provisional and will be revised in next year's publication. Figures for 2008 are final.</p>
HE Institutions	<p>Students in institutions of higher education on 1 December are included from data supplied by the Higher Education Statistics Agency (HESA). Figures for end 2008 are final.</p> <p>Out-turn figures for end 2009 are not available until January 2011. Therefore, numbers on higher education courses have been carried over from the previous year. Student numbers on higher education courses in 2008 have been grossed up to produce 2009 estimates by using information from the Higher Education Students Early Statistics (HESES) collected by the Higher Education Funding Council for England (HEFCE). All 2009 figures will be updated with final HESA data in the next SFR.</p>
WBL	<p>The Young People's Learning Agency's ILR provides monthly data on young people on WBL programmes. Snapshot data as at 1 January has been used, for end 2001 onwards. One exception to this is Learners on Entry to Employment (E2E) provision at the end of 2008 and end 2009. As with learners in FE institutions, a snapshot of 1 November is used for learners on E2E provision.</p> <p>The data underlying this SFR are the same as for the Statistical First Release (DS/SFR6) published by FE Data Service on 22 April 2010.</p>
LFS	<p>Figures on labour market status for end 2009 come from Quarter 1 2010 (January to March 2010) LFS. It also supplies the non-college based data for Employer Funded Training (EFT) and for Other Education and Training (OET).</p> <p>The LFS is a quarterly survey of approximately 50,000 households in England. If an individual is not available for interview, another member of the household may respond on their behalf.</p>
Population estimates	<p>The population estimates for academic year ages in January of each year are derived by DfE from mid-year estimates and projections provided by the Office for National Statistics (ONS) and the Government Actuary's Department (GAD).</p>

## C. LOCAL PARTICIPATION DATA

22. This SFR also includes participation in education and Work Based Learning of 16 and 17 year olds at local level. Regional data is published in Table 6 and additional tables at regional and LA area and maps of local participation are available as additional information on the website.
23. The data sources for local figures are the same as for the national figures. However in addition individuals are assigned to LAs. Box B overleaf shows how that is achieved.
24. Participation rates in the national and local figures may not coincide exactly. The differences between the two datasets are set out in Box C.
25. Due to the margin of error surrounding local level population estimates (as set out in Box B) and the use of school level data for independent schools, **participation rates at LA level can be over 100 per cent**. For these LAs, an asterisk is placed in the tables. The participation rates for the Isles of Scilly are also suppressed because the size of the population is insufficient to produce a robust series.
26. Participation estimates for individual **Inner London LAs** are not given due to the high level of cross-boundary flows of independent school students between the LAs. The introduction of pupil level schools data for maintained schools has not enabled the publication of participation rates for Inner London LAs as independent schools still return school level data.
27. Another source of local participation rates is data from the Annual Activity Survey undertaken by Connexions Partnerships (equivalent to YPLA areas). Data for 16 year olds are published as 'Moving On - Pathways Taken by Young People Beyond 16' at: <http://www.education.gov.uk/16to19/participation>
28. Connexions data have different definitions from those used in this publication. In particular, young people are included in the Partnership area in which they were educated pre-16, rather than where they are resident, and exclude a small proportion of young people who do not participate in the survey. However, 'Moving On' includes labour market information and an estimate of the proportion of school leavers who are not yet settled in work or learning.

## Box B: Data Sources for Local Estimates

Schools	<p>The Schools' Census provides data on school pupils in January of each year.</p> <p>For end 2001 onwards, the LA area for pupils in maintained schools, City Technology Colleges (CTCs), Academies and special schools has been identified using the postcode of the pupils' home addresses. For the pupils whose postcodes are missing, the LA of school has been used instead.</p> <p>Pupils in independent schools and pupil referral units (PRUs) are treated as if they live in the LA in which their school is situated. This will lead to inaccuracies in participation rates by residence to some degree, as some pupils attend independent schools outside their LA area.</p> <p>Prior to end 2001, location information for all school pupils was collected by the LA in which their school was situated. Therefore, there is a break in the time series at end 2001.</p> <p>All schools data are final.</p>
FE Institutions	<p>The Young People's Learning Agency's Individualised Learner Record (ILR) provides data on learners in FE sector colleges. Snapshot data as at 1 November has been used.</p> <p>In the ILR the LA has been identified using either the current postcode, or the postcode from which the learner applied to the FEI. For the learners whose postcodes are missing the LA of institution has been used instead.</p>
HE Institutions	<p>Students in institutions of higher education on 1 December are included from data supplied by the Higher Education Statistics Agency (HESA).</p> <p>The LA has been identified using the postcode of the address from which the student applied to the HEI. Where this data is not available, the LA of the institution has been used instead.</p> <p>All HEI data are final.</p>
WBL	<p>For end 2001 onwards, the Young People's Learning Agency's ILR provides data on learners on WBL programmes. Snapshot data as at 1 January has been used.</p> <p>In the ILR the LA has been identified using either the current postcode, or the postcode from which the learner applied. For the learners whose postcodes are missing the LA of the provider has been used instead.</p> <p>Prior to end 2001, WBL information was provided by the Training and Enterprise Council (TEC). Due to incomplete data, WBL figures are not available at LA level before end 1997.</p>
Population estimates	<p>The population estimates for academic year ages in January of each year are derived by DfE from mid-year estimates provided by the Office for National Statistics. <b>At local level, for individual ages, such estimates are subject to some uncertainty. This is particularly the case in small areas, where the margin of error surrounding a population estimate can be disproportionately high.</b> Users should bear this in mind when making comparisons, for example year-on-year within a small area or between one small area and another.</p>



### Box C: Differences between National and Local Level Participation Estimates

The national figures contain participation estimates for 16-18 year olds.	The local figures do not contain participation estimates for 18 year olds.  The information collected by HESA on students in HEIs in the UK does not hold the <b>term-time</b> address of the students, and therefore can not be used accurately for local level analysis of participation by the LA that a young person resides in. As the majority of 18 year olds in education are at an HEI, this means that we can not produce participation estimates for 18 year olds at a local level.
The national figures estimate young people in Employer Funded Training (EFT) and Other Education and Training (OET).	The local figures do not contain estimates for EFT and OET participation.  The participation estimates are produced as a snapshot of participation at the end of the calendar year. Information on EFT and OET participation is derived from the Labour Force Survey (LFS). Local LFS data is only available on a whole-year basis.
The national figures contain information on the employment status of young people.	The local figures do not contain labour market information.  Labour market data is taken from the LFS, and therefore is not used at a local level for the reasons given above.
The national figures include all young people in FEIs.	The local figures contain those 16 and 17 year olds studying in FEIs, who apply from the UK. It does not include those from overseas.
The national figures include provisional estimates for end 2009.	The local figures only contain estimates for end 2008. The provisional FEI data is not robust enough at the local level to allow accurate reporting. End 2009 local data will be published in 2011.

## D. FURTHER INFORMATION

29. Public enquiries about the information in this Statistical First Release should be addressed to: Michael Greer, Department for Education, Floor 5, 2 St Paul's Place, 125 Norfolk Street, Sheffield, S1 2FJ. Tel: 0114 274 2462.

30. Press enquiries should be addressed to 020 7925 6789.

A National Statistics publication.

National Statistics are produced to high professional standards set out in the National Statistics Code of Practice. They undergo regular quality assurance reviews to ensure that they meet customer needs. They are produced free from political interference.

## INDEX OF TABLES AND FIGURES

- Table 1:** Participation of 16 to 18 year olds in education and training, England, 2008 and 2009
- Table 2:** Participation of 16 to 18 year olds in education by institution type, England, 2008 and 2009
- Table 3:** Participation of 16 to 18 year olds in education and training by labour market status, England, 2008 and 2009
- Table 4:** Participation of 16-18 year olds in full-time education by highest qualification aim, and work based learning, England, 2008 and 2009
- Table 5:** Participation of 16-18 year olds in education and training, England, 1994 onwards
- Table 6:** Participation in education and YPLA funded WBL of 16 and 17 year olds by type of institution, region, and gender in England, end 2008
- Figure 1:** Participation of 16 year olds in education and training, England, 1994 to 2009
- Figure 2:** Participation of 17 year olds in education and training, England, 1994 to 2009
- Figure 3:** Participation of 18 year olds in education and training, England, 1994 to 2009
- Figure 4:** Participation of 16-18 year olds in education and training, England, 1994 to 2009

## ADDITIONAL TABLES AND FIGURES

The following additional tables, giving numbers and percentages, are available on the DfE website at <http://www.education.gov.uk/rsgateway/DB/SFR/s000938/index.shtml>

### National Estimates

Participation of 16-18 year olds in education and training by age and gender, England, 1985 onwards (A1 - A15) – equivalent to Table 1 in this document.

Participation of 16-18 year olds in education by institution type, and by age and gender, England, 1985 onwards (B1 - B15) – equivalent to Table 2 in this document.

Participation of 16-18 year olds in full-time education by highest qualification aim and institution type, and work based learning, and by age and gender, England, 1985 onwards (C1 - C15) – provides a more detailed institution breakdown than Table 4.

Participation of 16-18 year olds in education and training by labour market status, and by age and gender, England, 1985 onwards (D1 - D15) – provides more detail than Table 3.

## **Local Estimates**

Participation of 16 and 17 year olds in education and training by gender and institution type, Government Office Region, 1994 onwards – provides time-series of Table 6.

Participation of 16 and 17 year olds in education and training by institution type, Local Authority Area, 1994 onwards.

Maps of participation of 16 and 17 year olds in full time education and education and Work Based Learning by Local Authority Area, England end 2009.

**Table 1: Participation of 16 to 18 year olds in education and training, England, 2008 and 2009**

End of calendar year	percentage					
	Males		Females		All	
	2008	2009 provisional	2008	2009 provisional	2008	2009 provisional
<b>Aged 16</b>						
Full-time education	79.2	82.4	86.2	87.4	82.6	84.8
Work Based Learning (WBL)	6.7	5.7	4.4	4.0	5.6	4.9
Employer Funded Training (EFT) <sup>1</sup>	1.9	1.3	1.4	1.2	1.7	1.2
Other Education and Training (OET) <sup>1 2</sup>	4.3	4.6	3.2	3.8	3.7	4.2
<b>Total Education and training<sup>3</sup></b>	<b>91.8</b>	<b>93.7</b>	<b>95.0</b>	<b>96.3</b>	<b>93.4</b>	<b>95.0</b>
Not in any education or training - in employment	2.4	1.2	1.5	0.8	1.9	1.1
Not in any education, employment or training (NEET)	5.8	5.0	3.5	2.8	4.7	4.0
<b>Total Not in any Education or Training (NET)</b>	<b>8.2</b>	<b>6.3</b>	<b>5.0</b>	<b>3.7</b>	<b>6.6</b>	<b>5.0</b>
<i>Sub total for information:</i>						
<b>Total Education and WBL<sup>4</sup></b>	<b>89.9</b>	<b>92.2</b>	<b>93.5</b>	<b>95.1</b>	<b>91.6</b>	<b>93.6</b>
<b>All</b>	<b>100.0</b>	<b>100.0</b>	<b>100.0</b>	<b>100.0</b>	<b>100.0</b>	<b>100.0</b>
<b>Population (thousands)</b>	<b>338.9</b>	<b>326.8</b>	<b>318.5</b>	<b>309.1</b>	<b>657.4</b>	<b>635.9</b>
<b>Aged 17</b>						
Full-time education	64.4	69.7	73.2	76.0	68.6	72.8
Work Based Learning (WBL)	8.8	8.2	6.0	6.0	7.4	7.2
Employer Funded Training (EFT) <sup>1</sup>	4.0	3.0	2.7	2.2	3.4	2.6
Other Education and Training (OET) <sup>1 2</sup>	5.0	5.8	4.3	5.0	4.7	5.4
<b>Total Education and training<sup>3</sup></b>	<b>81.9</b>	<b>86.4</b>	<b>86.1</b>	<b>89.2</b>	<b>83.9</b>	<b>87.8</b>
Not in any education or training - in employment	8.9	5.3	5.4	4.4	7.2	4.9
Not in any education, employment or training (NEET)	9.2	8.3	8.5	6.4	8.8	7.4
<b>Total Not in any Education or Training (NET)</b>	<b>18.1</b>	<b>13.6</b>	<b>13.9</b>	<b>10.8</b>	<b>16.1</b>	<b>12.2</b>
<i>Sub total for information:</i>						
<b>Total Education and WBL<sup>4</sup></b>	<b>78.2</b>	<b>83.5</b>	<b>83.0</b>	<b>86.9</b>	<b>80.5</b>	<b>85.1</b>
<b>All</b>	<b>100.0</b>	<b>100.0</b>	<b>100.0</b>	<b>100.0</b>	<b>100.0</b>	<b>100.0</b>
<b>Population (thousands)</b>	<b>349.2</b>	<b>342.8</b>	<b>326.8</b>	<b>324.5</b>	<b>676.0</b>	<b>667.3</b>
<b>Aged 18</b>						
Full-time education	40.2	43.2	47.3	49.6	43.7	46.3
Work Based Learning (WBL)	8.6	8.4	4.9	5.4	6.8	6.9
Employer Funded Training (EFT) <sup>1</sup>	7.7	6.4	5.2	4.2	6.5	5.4
Other Education and Training (OET) <sup>1 2</sup>	5.6	6.6	5.3	5.9	5.5	6.3
<b>Total Education and training<sup>3</sup></b>	<b>61.9</b>	<b>64.4</b>	<b>62.6</b>	<b>65.1</b>	<b>62.3</b>	<b>64.7</b>
Not in any education or training - in employment	20.0	17.2	21.5	19.6	20.7	18.3
Not in any education, employment or training (NEET)	18.1	18.5	15.8	15.3	17.0	16.9
<b>Total Not in any Education or Training (NET)</b>	<b>38.1</b>	<b>35.6</b>	<b>37.4</b>	<b>34.9</b>	<b>37.7</b>	<b>35.3</b>
<i>Sub total for information:</i>						
<b>Total Education and WBL<sup>4</sup></b>	<b>54.1</b>	<b>57.5</b>	<b>56.9</b>	<b>60.3</b>	<b>55.4</b>	<b>58.8</b>
<b>All</b>	<b>100.0</b>	<b>100.0</b>	<b>100.0</b>	<b>100.0</b>	<b>100.0</b>	<b>100.0</b>
<b>Population (thousands)</b>	<b>353.2</b>	<b>353.7</b>	<b>330.9</b>	<b>333.0</b>	<b>684.1</b>	<b>686.7</b>
<b>Aged 16-18</b>						
Full-time education	61.0	64.6	68.7	70.5	64.7	67.5
Work Based Learning (WBL)	8.0	7.5	5.1	5.2	6.6	6.4
Employer Funded Training (EFT) <sup>1</sup>	4.6	3.6	3.1	2.6	3.9	3.1
Other Education and Training (OET) <sup>1 2</sup>	5.0	5.7	4.3	5.0	4.6	5.3
<b>Total Education and training<sup>3</sup></b>	<b>78.3</b>	<b>81.1</b>	<b>81.1</b>	<b>83.2</b>	<b>79.7</b>	<b>82.1</b>
Not in any education or training - in employment	10.5	8.1	9.6	8.5	10.1	8.3
Not in any education, employment or training (NEET)	11.1	10.8	9.3	8.3	10.3	9.6
<b>Total Not in any Education or Training (NET)</b>	<b>21.7</b>	<b>18.9</b>	<b>18.9</b>	<b>16.8</b>	<b>20.3</b>	<b>17.9</b>
<i>Sub total for information:</i>						
<b>Total Education and WBL<sup>4</sup></b>	<b>73.8</b>	<b>77.3</b>	<b>77.6</b>	<b>80.3</b>	<b>75.6</b>	<b>78.8</b>
<b>All</b>	<b>100.0</b>	<b>100.0</b>	<b>100.0</b>	<b>100.0</b>	<b>100.0</b>	<b>100.0</b>
<b>Population (thousands)</b>	<b>1,041.3</b>	<b>1,023.3</b>	<b>976.3</b>	<b>966.6</b>	<b>2,017.5</b>	<b>1,989.9</b>

1 For the part time split of these categories see Additional Web Tables; 'More detailed participation rates.'

2 Includes part-time education not funded by employers or through WBL; also full- or part-time education in independent FE and HE institutions.

3 Total of all full-time education and WBL (less WBL in full-time education) plus EFT and OET.

4 It is the total of all full-time and part-time education and WBL (less WBL in full-time education), equivalent to local level estimates for education and training.

**Table 2: Participation of 16 to 18 year olds in education by institution type, England, 2008 and 2009**

End of calendar year	<i>percentage</i>					
	Males		Females		All	
	2008	2009 provisional	2008	2009 provisional	2008	2009 provisional
<b>Aged 16</b>						
<b>Full-time education</b>						
Maintained schools <sup>1</sup>	30.0	31.4	33.8	34.8	31.8	33.0
Academies and City Technology Colleges	1.2	1.9	1.3	2.0	1.3	2.0
Independent schools <sup>2</sup>	6.1	6.1	6.1	6.0	6.1	6.1
Sixth form colleges	9.8	10.4	12.6	13.0	11.1	11.7
General FE, tertiary and specialist colleges	32.0	32.4	32.1	31.2	32.1	31.8
Higher education institutions	0.1	0.2	0.3	0.3	0.2	0.2
<b>Total</b>	<b>79.2</b>	<b>82.4</b>	<b>86.2</b>	<b>87.4</b>	<b>82.6</b>	<b>84.8</b>
<b>Part-time education<sup>3</sup></b>						
Maintained schools <sup>1</sup>	0.0	0.0	0.0	0.0	0.0	0.0
Academies and City Technology Colleges	0.0	0.0	0.0	0.0	0.0	0.0
Independent schools <sup>2</sup>	0.0	0.0	0.0	0.0	0.0	0.0
Sixth form colleges	0.1	0.1	0.1	0.1	0.1	0.1
General FE, tertiary and specialist colleges	4.3	4.4	2.8	3.5	3.6	4.0
Higher education institutions	0.1	0.2	0.2	0.2	0.2	0.2
<b>Total</b>	<b>4.5</b>	<b>4.7</b>	<b>3.1</b>	<b>3.9</b>	<b>3.8</b>	<b>4.3</b>
<b>Full- and part-time education</b>						
Maintained schools <sup>1</sup>	30.0	31.4	33.8	34.8	31.8	33.0
Academies and City Technology Colleges	1.2	1.9	1.3	2.0	1.3	2.0
Independent schools <sup>2</sup>	6.1	6.1	6.1	6.0	6.1	6.1
Sixth form colleges	9.8	10.5	12.6	13.2	11.2	11.8
General FE, tertiary and specialist colleges	36.3	36.8	34.9	34.8	35.6	35.8
Higher education institutions	0.3	0.3	0.5	0.5	0.4	0.4
<b>Total</b>	<b>83.7</b>	<b>87.1</b>	<b>89.3</b>	<b>91.3</b>	<b>86.4</b>	<b>89.1</b>
<b>Number of full-time students (thousands)</b>	<b>268.6</b>	<b>269.4</b>	<b>274.4</b>	<b>270.1</b>	<b>543.0</b>	<b>539.5</b>
<b>Number of part-time students (thousands)</b>	<b>15.2</b>	<b>15.3</b>	<b>10.0</b>	<b>12.1</b>	<b>25.2</b>	<b>27.3</b>
<b>Population (thousands)</b>	<b>338.9</b>	<b>326.8</b>	<b>318.5</b>	<b>309.1</b>	<b>657.4</b>	<b>635.9</b>
<b>Aged 17</b>						
<b>Full-time education</b>						
Maintained schools <sup>1</sup>	21.8	23.7	26.3	27.5	24.0	25.5
Academies and City Technology Colleges	0.8	1.3	0.9	1.4	0.8	1.3
Independent schools <sup>2</sup>	5.6	5.9	5.6	5.8	5.6	5.8
Sixth form colleges	8.0	8.4	10.4	10.7	9.2	9.5
General FE, tertiary and specialist colleges	27.6	29.8	29.1	29.7	28.3	29.8
Higher education institutions	0.6	0.6	0.9	0.9	0.7	0.8
<b>Total</b>	<b>64.4</b>	<b>69.7</b>	<b>73.2</b>	<b>76.0</b>	<b>68.6</b>	<b>72.8</b>
<b>Part-time education<sup>3</sup></b>						
Maintained schools <sup>1</sup>	0.0	0.0	0.0	0.0	0.0	0.0
Academies and City Technology Colleges	0.0	0.0	0.0	0.0	0.0	0.0
Independent schools <sup>2</sup>	0.0	0.0	0.0	0.0	0.0	0.0
Sixth form colleges	0.1	0.2	0.1	0.3	0.1	0.2
General FE, tertiary and specialist colleges	5.3	5.9	3.6	4.4	4.5	5.2
Higher education institutions	0.2	0.2	0.3	0.3	0.3	0.3
<b>Total</b>	<b>5.7</b>	<b>6.3</b>	<b>4.0</b>	<b>5.0</b>	<b>4.9</b>	<b>5.7</b>
<b>Full- and part-time education</b>						
Maintained schools <sup>1</sup>	21.8	23.7	26.3	27.5	24.0	25.5
Academies and City Technology Colleges	0.8	1.3	0.9	1.4	0.8	1.3
Independent schools <sup>2</sup>	5.6	5.9	5.6	5.8	5.6	5.8
Sixth form colleges	8.1	8.6	10.5	11.0	9.3	9.7
General FE, tertiary and specialist colleges	32.9	35.7	32.7	34.2	32.8	35.0
Higher education institutions	0.8	0.8	1.2	1.2	1.0	1.0
<b>Total</b>	<b>70.1</b>	<b>76.0</b>	<b>77.2</b>	<b>81.0</b>	<b>73.5</b>	<b>78.5</b>
<b>Number of full-time students (thousands)</b>	<b>224.8</b>	<b>238.8</b>	<b>239.2</b>	<b>246.7</b>	<b>464.0</b>	<b>485.6</b>
<b>Number of part-time students (thousands)</b>	<b>19.8</b>	<b>21.8</b>	<b>13.1</b>	<b>16.2</b>	<b>32.9</b>	<b>38.0</b>
<b>Population (thousands)</b>	<b>349.2</b>	<b>342.8</b>	<b>326.8</b>	<b>324.5</b>	<b>676.0</b>	<b>667.3</b>

1 Includes all pupils in maintained schools, maintained special schools and pupil referral units.

2 Includes all pupils in independent schools and non-maintained special schools.

3 Total of those studying part-time education as part of WBL, EFT and OET.

**Table 2: Participation of 16 to 18 year olds in education by institution type, England, 2008 and 2009**  
**Continued**

End of calendar year	percentage					
	Males		Females		All	
	2008	2009 provisional	2008	2009 provisional	2008	2009 provisional
<b>Aged 18</b>						
<b>Full-time education</b>						
Maintained schools <sup>1</sup>	2.8	3.1	2.6	2.7	2.7	2.9
Academies and City Technology Colleges	0.1	0.2	0.1	0.2	0.1	0.2
Independent schools <sup>2</sup>	0.9	1.0	0.8	0.8	0.9	0.9
Sixth form colleges	1.5	1.6	1.4	1.5	1.5	1.5
General FE, tertiary and specialist colleges	15.0	16.9	15.1	16.4	15.0	16.7
Higher education institutions	19.9	20.5	27.3	27.9	23.5	24.1
<b>Total</b>	<b>40.2</b>	<b>43.2</b>	<b>47.3</b>	<b>49.6</b>	<b>43.7</b>	<b>46.3</b>
<b>Part-time education<sup>3</sup></b>						
Maintained schools <sup>1</sup>	0.0	0.0	0.0	0.0	0.0	0.0
Academies and City Technology Colleges	0.0	0.0	0.0	0.0	0.0	0.0
Independent schools <sup>2</sup>	0.0	0.0	0.0	0.0	0.0	0.0
Sixth form colleges	0.1	0.1	0.1	0.2	0.1	0.2
General FE, tertiary and specialist colleges	5.2	5.8	4.1	4.7	4.7	5.3
Higher education institutions	0.5	0.5	0.5	0.5	0.5	0.5
<b>Total</b>	<b>5.8</b>	<b>6.4</b>	<b>4.7</b>	<b>5.4</b>	<b>5.3</b>	<b>5.9</b>
<b>Full- and part-time education</b>						
Maintained schools <sup>1</sup>	2.8	3.1	2.6	2.7	2.7	2.9
Academies and City Technology Colleges	0.1	0.2	0.1	0.2	0.1	0.2
Independent schools <sup>2</sup>	0.9	1.0	0.8	0.8	0.9	0.9
Sixth form colleges	1.6	1.7	1.6	1.7	1.6	1.7
General FE, tertiary and specialist colleges	20.2	22.7	19.2	21.1	19.7	21.9
Higher education institutions	20.4	20.9	27.8	28.4	24.0	24.6
<b>Total</b>	<b>46.0</b>	<b>49.7</b>	<b>52.1</b>	<b>55.0</b>	<b>48.9</b>	<b>52.2</b>
<b>Number of full-time students (thousands)</b>	<b>142.1</b>	<b>153.0</b>	<b>156.6</b>	<b>165.0</b>	<b>298.7</b>	<b>318.0</b>
<b>Number of part-time students (thousands)</b>	<b>20.5</b>	<b>22.7</b>	<b>15.7</b>	<b>18.0</b>	<b>36.2</b>	<b>40.7</b>
<b>Population (thousands)</b>	<b>353.2</b>	<b>353.7</b>	<b>330.9</b>	<b>333.0</b>	<b>684.1</b>	<b>686.7</b>
<b>Aged 16-18</b>						
<b>Full-time education</b>						
Maintained schools <sup>1</sup>	18.0	19.0	20.7	21.3	19.3	20.1
Academies and City Technology Colleges	0.7	1.1	0.8	1.2	0.7	1.2
Independent schools <sup>2</sup>	4.2	4.3	4.1	4.2	4.2	4.2
Sixth form colleges	6.4	6.7	8.1	8.3	7.2	7.5
General FE, tertiary and specialist colleges	24.7	26.2	25.3	25.6	25.0	25.9
Higher education institutions	7.0	7.3	9.6	10.0	8.3	8.6
<b>Total</b>	<b>61.0</b>	<b>64.6</b>	<b>68.7</b>	<b>70.5</b>	<b>64.7</b>	<b>67.5</b>
<b>Part-time education<sup>3</sup></b>						
Maintained schools <sup>1</sup>	0.0	0.0	0.0	0.0	0.0	0.0
Academies and City Technology Colleges	0.0	0.0	0.0	0.0	0.0	0.0
Independent schools <sup>2</sup>	0.0	0.0	0.0	0.0	0.0	0.0
Sixth form colleges	0.1	0.1	0.1	0.2	0.1	0.2
General FE, tertiary and specialist colleges	5.0	5.4	3.5	4.2	4.3	4.8
Higher education institutions	0.3	0.3	0.4	0.4	0.3	0.3
<b>Total</b>	<b>5.3</b>	<b>5.8</b>	<b>4.0</b>	<b>4.8</b>	<b>4.7</b>	<b>5.3</b>
<b>Full- and part-time education</b>						
Maintained schools <sup>1</sup>	18.0	19.0	20.7	21.3	19.3	20.1
Academies and City Technology Colleges	0.7	1.1	0.8	1.2	0.7	1.2
Independent schools <sup>2</sup>	4.2	4.3	4.1	4.2	4.2	4.2
Sixth form colleges	6.5	6.8	8.2	8.5	7.3	7.6
General FE, tertiary and specialist colleges	29.7	31.6	28.8	29.9	29.3	30.7
Higher education institutions	7.3	7.6	10.0	10.4	8.6	9.0
<b>Total</b>	<b>66.4</b>	<b>70.5</b>	<b>72.6</b>	<b>75.3</b>	<b>69.4</b>	<b>72.8</b>
<b>Number of full-time students (thousands)</b>	<b>635.5</b>	<b>661.2</b>	<b>670.2</b>	<b>681.8</b>	<b>1,305.7</b>	<b>1,343.0</b>
<b>Number of part-time students (thousands)</b>	<b>55.5</b>	<b>59.8</b>	<b>38.8</b>	<b>46.3</b>	<b>94.3</b>	<b>106.0</b>
<b>Population (thousands)</b>	<b>1,041.3</b>	<b>1,023.3</b>	<b>976.3</b>	<b>966.6</b>	<b>2,017.5</b>	<b>1,989.9</b>

1 Includes all pupils in maintained schools, maintained special schools and pupil referral units.

2 Includes all pupils in independent schools and non-maintained special schools.

3 Total of those studying part-time education as part of WBL, EFT and OET.

**Table 3: Participation of 16 to 18 year olds in education and training by labour market status, England, 2008 and 2009**

End of calendar year	percentage								Not in employment (including NEET figure) <sup>2</sup>	
	In employment		ILO unemployed <sup>1</sup>		Inactive		All			
	2008	2009 provisional	2008	2009 provisional	2008	2009 provisional	2008	2009 provisional		
<b>Aged 16</b>										
<b>Education and training</b>										
Full-time education	23.2	19.8	8.9	9.7	50.4	55.3	82.6	84.8	59.4	65.0
Work Based Learning (WBL)	5.6	4.9	0.0	0.0	0.0	0.0	5.6	4.9	0.0	0.0
Employer Funded Training (EFT)	1.7	1.2	0.0	0.0	0.0	0.0	1.7	1.2	0.0	0.0
Other education and training (OET) <sup>3</sup>	0.6	0.7	1.0	1.2	2.1	2.3	3.7	4.2	3.1	3.5
<b>Total Education and training<sup>4</sup></b>	<b>30.9</b>	<b>26.4</b>	<b>9.9</b>	<b>10.9</b>	<b>52.6</b>	<b>57.6</b>	<b>93.4</b>	<b>95.0</b>	<b>62.5</b>	<b>68.5</b>
Not in any education or training <sup>5</sup>	1.9	1.1	2.7	2.4	1.9	1.6	6.6	5.0	4.7	4.0
<b>All</b>	<b>32.8</b>	<b>27.5</b>	<b>12.7</b>	<b>13.3</b>	<b>54.5</b>	<b>59.2</b>	<b>100.0</b>	<b>100.0</b>	<b>67.2</b>	<b>72.5</b>
<b>Population (thousands)</b>	<b>215.7</b>	<b>174.9</b>	<b>83.3</b>	<b>84.4</b>	<b>358.4</b>	<b>376.6</b>	<b>657.4</b>	<b>635.9</b>	<b>441.7</b>	<b>461.0</b>
<b>Aged 17</b>										
<b>Education and training</b>										
Full-time education	28.0	26.5	5.2	7.3	35.5	39.0	68.6	72.8	40.7	46.3
Work Based Learning (WBL)	7.4	7.2	0.0	0.0	0.0	0.0	7.4	7.2	0.0	0.0
Employer Funded Training (EFT)	3.4	2.6	0.0	0.0	0.0	0.0	3.4	2.6	0.0	0.0
Other education and training (OET) <sup>3</sup>	1.5	1.6	1.2	1.5	2.0	2.3	4.7	5.4	3.1	3.8
<b>Total Education and training<sup>4</sup></b>	<b>40.1</b>	<b>37.7</b>	<b>6.3</b>	<b>8.8</b>	<b>37.5</b>	<b>41.3</b>	<b>83.9</b>	<b>87.8</b>	<b>43.8</b>	<b>50.1</b>
Not in any education or training <sup>5</sup>	7.2	4.9	5.5	4.6	3.4	2.7	16.1	12.2	8.8	7.4
<b>All</b>	<b>47.3</b>	<b>42.5</b>	<b>11.8</b>	<b>13.4</b>	<b>40.9</b>	<b>44.0</b>	<b>100.0</b>	<b>100.0</b>	<b>52.7</b>	<b>57.5</b>
<b>Population (thousands)</b>	<b>319.9</b>	<b>283.8</b>	<b>79.7</b>	<b>89.6</b>	<b>276.4</b>	<b>293.9</b>	<b>676.0</b>	<b>667.3</b>	<b>356.1</b>	<b>383.5</b>
<b>Aged 18</b>										
<b>Education and training</b>										
Full-time education	15.0	14.2	3.3	3.9	25.4	28.2	43.7	46.3	28.7	32.1
Work Based Learning (WBL)	6.8	6.9	0.0	0.0	0.0	0.0	6.8	6.9	0.0	0.0
Employer Funded Training (EFT)	6.5	5.4	0.0	0.0	0.0	0.0	6.5	5.4	0.0	0.0
Other education and training (OET) <sup>3</sup>	2.5	2.5	1.0	1.2	1.9	2.6	5.5	6.3	3.0	3.8
<b>Total Education and training<sup>4</sup></b>	<b>30.6</b>	<b>28.8</b>	<b>4.3</b>	<b>5.1</b>	<b>27.3</b>	<b>30.8</b>	<b>62.3</b>	<b>64.7</b>	<b>31.6</b>	<b>35.9</b>
Not in any education or training <sup>5</sup>	20.7	18.3	10.9	11.9	6.1	5.1	37.7	35.3	17.0	16.9
<b>All</b>	<b>51.4</b>	<b>47.1</b>	<b>15.2</b>	<b>17.0</b>	<b>33.5</b>	<b>35.9</b>	<b>100.0</b>	<b>100.0</b>	<b>48.6</b>	<b>52.9</b>
<b>Population (thousands)</b>	<b>351.4</b>	<b>323.7</b>	<b>103.8</b>	<b>116.6</b>	<b>228.9</b>	<b>246.3</b>	<b>684.1</b>	<b>686.7</b>	<b>332.8</b>	<b>363.0</b>
<b>Aged 16-18</b>										
<b>Education and training</b>										
Full-time education	22.0	20.1	5.8	6.9	36.9	40.5	64.7	67.5	42.7	47.4
Work Based Learning (WBL)	6.6	6.4	0.0	0.0	0.0	0.0	6.6	6.4	0.0	0.0
Employer Funded Training (EFT)	3.9	3.1	0.0	0.0	0.0	0.0	3.9	3.1	0.0	0.0
Other education and training (OET) <sup>3</sup>	1.6	1.6	1.1	1.3	2.0	2.4	4.6	5.3	3.1	3.7
<b>Total Education and training<sup>4</sup></b>	<b>33.9</b>	<b>31.0</b>	<b>6.8</b>	<b>8.2</b>	<b>39.0</b>	<b>42.9</b>	<b>79.7</b>	<b>82.1</b>	<b>45.8</b>	<b>51.1</b>
Not in any education or training <sup>5</sup>	10.1	8.3	6.4	6.4	3.8	3.2	20.3	17.9	10.3	9.6
<b>All</b>	<b>44.0</b>	<b>39.3</b>	<b>13.2</b>	<b>14.6</b>	<b>42.8</b>	<b>46.1</b>	<b>100.0</b>	<b>100.0</b>	<b>56.0</b>	<b>60.7</b>
<b>Population (thousands)</b>	<b>887.0</b>	<b>782.3</b>	<b>266.8</b>	<b>290.7</b>	<b>863.7</b>	<b>916.9</b>	<b>2,017.5</b>	<b>1,989.9</b>	<b>1,130.5</b>	<b>1,207.5</b>

1 Available to start work in the next two weeks and has either looked for work in the last four weeks or is waiting to start a job already obtained

2 The sum of those young people who are ILO unemployed or inactive. Therefore, the figures in this column for young people not in any education or training are the NEET figure

3 Includes part-time education not funded by employers or through WBL; also full- or part-time education in independent FE and HE institution

4 Total of all full-time education and WBL (less WBL in full-time education) plus EFT and OE<sup>5</sup>

5 The remainder of the age group

**Table 4: Participation of 16 to 18 year olds in full-time education by highest qualification aim, and work based learning, England, 2008 and 2009**

End of calendar year	percentage					
	Males		Females		All	
	2008	2009 provisional	2008	2009 provisional	2008	2009 provisional
<b>Aged 16</b>						
<b>Full-time education</b>	<b>79.2</b>	<b>82.4</b>	<b>86.2</b>	<b>87.4</b>	<b>82.6</b>	<b>84.8</b>
<b>Higher Education (Level 4 and above)</b>	<b>0.0</b>	<b>0.0</b>	<b>0.1</b>	<b>0.1</b>	<b>0.1</b>	<b>0.0</b>
<b>Further Education</b>	<b>79.2</b>	<b>82.4</b>	<b>86.1</b>	<b>87.3</b>	<b>82.5</b>	<b>84.8</b>
<b>Level 3</b>	<b>53.3</b>	<b>56.3</b>	<b>64.9</b>	<b>66.9</b>	<b>58.9</b>	<b>61.5</b>
GCE/VCE A/AS levels <sup>1</sup>	43.5	45.2	53.2	54.3	48.2	49.6
NVQ 3 and equivalents	9.8	11.2	11.8	12.7	10.8	11.9
<b>Level 2</b>	<b>13.8</b>	<b>14.0</b>	<b>14.1</b>	<b>13.5</b>	<b>14.0</b>	<b>13.8</b>
GCSE/Intermediate GNVQ	3.6	3.6	3.3	3.3	3.5	3.4
NVQ 2 and equivalents	10.2	10.4	10.8	10.3	10.5	10.3
<b>Level 1</b>	<b>8.8</b>	<b>8.9</b>	<b>5.1</b>	<b>5.0</b>	<b>7.0</b>	<b>7.0</b>
Foundation GNVQ	0.0	0.0	0.0	0.0	0.0	0.0
NVQ 1 and equivalents	8.8	8.9	5.1	5.0	7.0	7.0
<b>Other courses<sup>2</sup></b>	<b>3.2</b>	<b>3.2</b>	<b>1.9</b>	<b>1.9</b>	<b>2.6</b>	<b>2.5</b>
<b>Work Based Learning (WBL)</b>	<b>6.7</b>	<b>5.7</b>	<b>4.4</b>	<b>4.0</b>	<b>5.6</b>	<b>4.9</b>
Apprenticeships Total	4.6	3.7	3.0	2.7	3.8	3.2
Advanced Apprenticeships (AAs)	1.3	1.0	0.1	0.1	0.7	0.6
Apprenticeships (As)	3.3	2.7	2.9	2.6	3.1	2.7
Entry to Employment (E2E)	2.1	2.0	1.3	1.3	1.7	1.7
Other <sup>3</sup>	0.0	0.0	0.0	0.0	0.0	0.0
<b>Population aged 16 (thousands)</b>	<b>338.9</b>	<b>326.8</b>	<b>318.5</b>	<b>309.1</b>	<b>657.4</b>	<b>635.9</b>
<b>Aged 17</b>						
<b>Full-time education</b>	<b>64.4</b>	<b>69.7</b>	<b>73.2</b>	<b>76.0</b>	<b>68.6</b>	<b>72.8</b>
<b>Higher Education (Level 4 and above)</b>	<b>0.5</b>	<b>0.5</b>	<b>0.7</b>	<b>0.7</b>	<b>0.6</b>	<b>0.6</b>
<b>Further Education</b>	<b>63.9</b>	<b>69.1</b>	<b>72.5</b>	<b>75.3</b>	<b>68.0</b>	<b>72.2</b>
<b>Level 3</b>	<b>49.5</b>	<b>53.3</b>	<b>61.5</b>	<b>64.4</b>	<b>55.3</b>	<b>58.7</b>
GCE/VCE A/AS levels <sup>1</sup>	36.0	38.4	45.0	46.7	40.3	42.5
NVQ 3 and equivalents	13.5	14.9	16.5	17.7	15.0	16.2
<b>Level 2</b>	<b>8.9</b>	<b>9.9</b>	<b>7.7</b>	<b>7.5</b>	<b>8.3</b>	<b>8.7</b>
GCSE/Intermediate GNVQ	0.8	0.9	0.7	0.8	0.8	0.8
NVQ 2 and equivalents	8.1	9.0	6.9	6.7	7.5	7.9
<b>Level 1</b>	<b>3.3</b>	<b>3.7</b>	<b>1.9</b>	<b>2.0</b>	<b>2.6</b>	<b>2.9</b>
Foundation GNVQ	0.0	0.0	0.0	0.0	0.0	0.0
NVQ 1 and equivalents	3.3	3.7	1.9	2.0	2.6	2.9
<b>Other courses<sup>2</sup></b>	<b>2.2</b>	<b>2.3</b>	<b>1.5</b>	<b>1.4</b>	<b>1.8</b>	<b>1.9</b>
<b>Work Based Learning (WBL)</b>	<b>8.8</b>	<b>8.2</b>	<b>6.0</b>	<b>6.0</b>	<b>7.4</b>	<b>7.2</b>
Apprenticeships Total	7.4	6.8	5.0	5.0	6.2	5.9
Advanced Apprenticeships (AAs)	2.1	1.9	0.6	0.7	1.4	1.3
Apprenticeships (As)	5.3	4.9	4.3	4.3	4.8	4.6
Entry to Employment (E2E)	1.3	1.4	0.9	1.0	1.1	1.2
Other <sup>3</sup>	0.1	0.0	0.1	0.1	0.1	0.0
<b>Population aged 17 (thousands)</b>	<b>349.2</b>	<b>342.8</b>	<b>326.8</b>	<b>324.5</b>	<b>676.0</b>	<b>667.3</b>

1 Includes GCE A/AS levels in applied subjects.

2 Includes all courses below level 1 and those of unknown or unspecified level (also includes PRUs; and special schools, for which no qualification breakdown is available).

3 Various work related provision including basic skills, individually tailored provision and learning as part of Train to Gain



**Table 4: Participation of 16 to 18 year olds in full-time education by highest qualification aim, and work based learning, England, 2008 and 2009**  
*Continued*

End of calendar year	percentage					
	Males		Females		All	
	2008	2009 provisional	2008	2009 provisional	2008	2009 provisional
<b>Aged 18</b>						
<b>Full-time education</b>	<b>40.2</b>	<b>43.2</b>	<b>47.3</b>	<b>49.6</b>	<b>43.7</b>	<b>46.3</b>
<b>Higher Education (Level 4 and above)</b>	<b>20.0</b>	<b>20.6</b>	<b>26.7</b>	<b>27.4</b>	<b>23.2</b>	<b>23.9</b>
<b>Further Education</b>	<b>20.3</b>	<b>22.7</b>	<b>20.6</b>	<b>22.2</b>	<b>20.4</b>	<b>22.4</b>
<b>Level 3</b>	<b>13.6</b>	<b>15.1</b>	<b>15.6</b>	<b>16.8</b>	<b>14.5</b>	<b>15.9</b>
GCE/VCE A/AS levels <sup>1</sup>	5.0	5.1	5.0	5.2	5.0	5.2
NVQ 3 and equivalents	8.6	10.0	10.5	11.6	9.5	10.8
<b>Level 2</b>	<b>3.7</b>	<b>4.1</b>	<b>3.1</b>	<b>3.4</b>	<b>3.4</b>	<b>3.8</b>
GCSE/Intermediate GNVQ	0.3	0.3	0.3	0.3	0.3	0.3
NVQ 2 and equivalents	3.4	3.8	2.8	3.1	3.1	3.5
<b>Level 1</b>	<b>1.5</b>	<b>1.8</b>	<b>0.9</b>	<b>1.0</b>	<b>1.2</b>	<b>1.4</b>
Foundation GNVQ	0.0	0.0	0.0	0.0	0.0	0.0
NVQ 1 and equivalents	1.4	1.7	0.9	1.0	1.2	1.4
<b>Other courses<sup>2</sup></b>	<b>1.5</b>	<b>1.6</b>	<b>1.1</b>	<b>1.0</b>	<b>1.3</b>	<b>1.3</b>
<b>Work Based Learning (WBL)</b>	<b>8.6</b>	<b>8.4</b>	<b>4.9</b>	<b>5.4</b>	<b>6.8</b>	<b>6.9</b>
Apprenticeships Total	8.0	7.7	4.4	5.0	6.3	6.4
Advanced Apprenticeships (AAs)	3.7	3.5	1.4	1.6	2.6	2.6
Apprenticeships (As)	4.3	4.2	3.0	3.3	3.7	3.8
Entry to Employment (E2E)	0.4	0.5	0.3	0.3	0.4	0.4
Other <sup>3</sup>	0.2	0.1	0.2	0.1	0.2	0.1
<b>Population aged 18 (thousands)</b>	<b>353.2</b>	<b>353.7</b>	<b>330.9</b>	<b>333.0</b>	<b>684.1</b>	<b>686.7</b>
<b>Aged 16-18</b>						
<b>Full-time education</b>	<b>61.0</b>	<b>64.6</b>	<b>68.7</b>	<b>70.5</b>	<b>64.7</b>	<b>67.5</b>
<b>Higher Education (Level 4 and above)</b>	<b>7.0</b>	<b>7.3</b>	<b>9.3</b>	<b>9.7</b>	<b>8.1</b>	<b>8.5</b>
<b>Further Education</b>	<b>54.1</b>	<b>57.3</b>	<b>59.3</b>	<b>60.9</b>	<b>56.6</b>	<b>59.0</b>
<b>Level 3</b>	<b>38.6</b>	<b>41.1</b>	<b>47.0</b>	<b>48.8</b>	<b>42.7</b>	<b>44.8</b>
GCE/VCE A/AS levels <sup>1</sup>	27.9	29.1	34.1	34.8	30.9	31.9
NVQ 3 and equivalents	10.6	12.0	12.9	14.0	11.8	13.0
<b>Level 2</b>	<b>8.7</b>	<b>9.2</b>	<b>8.2</b>	<b>8.0</b>	<b>8.5</b>	<b>8.6</b>
GCSE/Intermediate GNVQ	1.5	1.5	1.4	1.4	1.5	1.5
NVQ 2 and equivalents	7.2	7.7	6.8	6.6	7.0	7.1
<b>Level 1</b>	<b>4.5</b>	<b>4.7</b>	<b>2.6</b>	<b>2.6</b>	<b>3.6</b>	<b>3.7</b>
Foundation GNVQ	0.0	0.0	0.0	0.0	0.0	0.0
NVQ 1 and equivalents	4.4	4.7	2.6	2.6	3.6	3.7
<b>Other courses<sup>2</sup></b>	<b>2.3</b>	<b>2.3</b>	<b>1.5</b>	<b>1.4</b>	<b>1.9</b>	<b>1.9</b>
<b>Work Based Learning (WBL)</b>	<b>8.0</b>	<b>7.5</b>	<b>5.1</b>	<b>5.2</b>	<b>6.6</b>	<b>6.4</b>
Apprenticeships Total	6.7	6.1	4.1	4.2	5.4	5.2
Advanced Apprenticeships (AAs)	2.4	2.2	0.7	0.8	1.6	1.5
Apprenticeships (As)	4.3	4.0	3.4	3.4	3.9	3.7
Entry to Employment (E2E)	1.3	1.3	0.9	0.9	1.1	1.1
Other <sup>3</sup>	0.1	0.1	0.1	0.1	0.1	0.1
<b>Population aged 16-18 (thousands)</b>	<b>1,041.3</b>	<b>1,023.3</b>	<b>976.3</b>	<b>966.6</b>	<b>2,017.5</b>	<b>1,989.9</b>

1 Includes GCE A/AS levels in applied subjects.

2 Includes all courses below level 1 and those of unknown or unspecified level (also includes PRUs; and special schools, for which no qualification breakdown is available).

3 Various work related provision including basic skills, individually tailored provision and learning as part of Train to Gain

Table 5: Participation of 16-18 year olds in education and training, England, 1994 onwards <sup>1 2 6</sup>

End of calendar year	1994	1995	1996	1997	1998	1999	2000	2001	2002	2003	2004	2005	2006	2007	percentage	
															2008	2009
<i>percentage</i>																
<b>provisional</b>																
<b>Males and females</b>																
<b>Aged 16</b>																
<b>Education and training</b>																
Full-time education	71.8	71.1	70.6	70.2	70.2	71.8	71.0	70.8	72.1	72.2	73.8	75.7	78.0	79.3	82.6	84.8
Work Based Learning (WBL)	12.6	10.9	9.8	9.5	8.9	8.2	8.3	7.3	6.9	7.1	6.7	6.3	5.7	5.9	5.6	4.9
Employer Funded Training (EFT)	3.1	3.2	3.5	3.5	3.5	3.5	2.9	3.1	3.0	3.1	2.8	2.7	2.2	2.2	1.7	1.2
Other education and training (OET) <sup>3</sup>	4.6	4.2	4.2	4.2	4.0	3.9	4.4	4.7	4.7	4.6	4.2	3.9	3.6	3.5	3.7	4.2
<b>Total Education and training<sup>4</sup></b>	<b>90.9</b>	<b>88.6</b>	<b>87.5</b>	<b>86.8</b>	<b>86.1</b>	<b>87.1</b>	<b>86.4</b>	<b>85.7</b>	<b>86.5</b>	<b>86.9</b>	<b>87.3</b>	<b>88.4</b>	<b>89.3</b>	<b>90.8</b>	<b>93.4</b>	<b>95.0</b>
Not in education or training - in employment	4.8	5.5	6.0	7.3	7.2	6.2	6.9	6.6	5.7	5.5	5.4	3.9	4.0	3.9	1.9	1.1
Not in any education, employment or training (NEET)	4.4	5.9	6.5	5.9	6.7	6.8	6.7	7.7	7.8	7.7	7.3	7.7	6.7	5.3	4.7	4.0
<b>Total not in any education or training</b>	<b>9.1</b>	<b>11.4</b>	<b>12.5</b>	<b>13.2</b>	<b>13.9</b>	<b>12.9</b>	<b>13.6</b>	<b>14.3</b>	<b>13.5</b>	<b>13.1</b>	<b>12.7</b>	<b>11.6</b>	<b>10.7</b>	<b>9.2</b>	<b>6.6</b>	<b>5.0</b>
<i>Sub total for information:</i>																
<b>Total Education and WBL<sup>5</sup></b>	<b>89.4</b>	<b>86.8</b>	<b>85.3</b>	<b>84.6</b>	<b>83.7</b>	<b>84.6</b>	<b>83.7</b>	<b>82.6</b>	<b>83.5</b>	<b>83.8</b>	<b>84.5</b>	<b>85.7</b>	<b>86.9</b>	<b>88.4</b>	<b>91.6</b>	<b>93.6</b>
<b>Population (thousands)</b>	<b>545.8</b>	<b>595.0</b>	<b>613.6</b>	<b>605.9</b>	<b>594.5</b>	<b>598.8</b>	<b>606.7</b>	<b>633.2</b>	<b>630.9</b>	<b>646.7</b>	<b>665.1</b>	<b>657.1</b>	<b>666.9</b>	<b>669.1</b>	<b>657.4</b>	<b>635.9</b>
<b>Aged 17</b>																
<b>Education and training</b>																
Full-time education	59.8	59.6	59.3	58.7	58.5	59.7	60.0	58.6	59.0	59.9	60.6	62.8	64.9	66.4	68.6	72.8
Work Based Learning (WBL)	13.6	12.4	11.9	11.3	11.2	11.0	10.8	9.6	8.9	9.1	8.7	8.2	7.6	7.5	7.4	7.2
Employer Funded Training (EFT)	5.1	4.9	5.8	6.1	6.3	5.9	4.8	4.8	4.8	4.8	4.7	4.3	4.1	4.0	3.4	2.6
Other education and training (OET) <sup>3</sup>	5.0	4.5	4.8	5.1	4.9	4.7	5.2	5.6	5.6	5.6	5.4	4.9	4.4	4.4	4.7	5.4
<b>Total Education and training<sup>4</sup></b>	<b>82.4</b>	<b>80.6</b>	<b>81.2</b>	<b>80.6</b>	<b>80.5</b>	<b>81.1</b>	<b>80.6</b>	<b>78.4</b>	<b>78.1</b>	<b>79.2</b>	<b>79.2</b>	<b>80.0</b>	<b>80.9</b>	<b>82.2</b>	<b>83.9</b>	<b>87.8</b>
Not in education or training - in employment	10.1	11.6	8.6	11.3	11.0	11.7	12.1	12.0	12.8	13.1	11.6	9.6	9.3	8.6	7.2	4.9
Not in any education, employment or training (NEET)	7.5	7.8	10.3	8.1	8.5	7.2	7.4	9.6	9.0	7.7	9.2	10.4	9.8	9.2	8.8	7.4
<b>Total not in any education or training</b>	<b>17.6</b>	<b>19.4</b>	<b>18.8</b>	<b>19.4</b>	<b>19.5</b>	<b>18.9</b>	<b>19.4</b>	<b>21.6</b>	<b>21.9</b>	<b>20.8</b>	<b>20.8</b>	<b>20.0</b>	<b>19.1</b>	<b>17.8</b>	<b>16.1</b>	<b>12.2</b>
<i>Sub total for information:</i>																
<b>Total Education and WBL<sup>5</sup></b>	<b>79.6</b>	<b>77.8</b>	<b>77.4</b>	<b>76.5</b>	<b>75.9</b>	<b>76.8</b>	<b>76.5</b>	<b>74.0</b>	<b>73.8</b>	<b>74.7</b>	<b>74.7</b>	<b>76.0</b>	<b>76.9</b>	<b>78.2</b>	<b>80.5</b>	<b>85.1</b>
<b>Population (thousands)</b>	<b>530.3</b>	<b>544.3</b>	<b>593.1</b>	<b>611.4</b>	<b>603.7</b>	<b>590.1</b>	<b>598.1</b>	<b>612.8</b>	<b>639.6</b>	<b>638.5</b>	<b>654.5</b>	<b>672.2</b>	<b>664.1</b>	<b>673.7</b>	<b>676.0</b>	<b>667.3</b>
<b>Aged 18</b>																
<b>Education and training</b>																
Full-time education	39.6	41.2	41.3	40.0	39.1	39.2	39.3	38.2	38.3	38.1	38.9	40.7	41.6	42.8	43.7	46.3
Work Based Learning (WBL)	7.7	7.8	8.6	8.5	8.6	9.0	9.0	8.6	8.1	8.1	7.8	7.5	7.0	6.8	6.8	6.9
Employer Funded Training (EFT)	7.7	6.8	6.9	7.4	7.1	7.3	6.8	7.1	7.1	7.3	7.1	6.7	7.0	6.9	6.5	5.4
Other education and training (OET) <sup>3</sup>	6.5	6.2	6.5	7.0	7.1	6.8	7.1	7.0	6.7	6.6	6.6	6.5	6.0	5.7	5.5	6.3
<b>Total Education and training<sup>4</sup></b>	<b>61.0</b>	<b>61.6</b>	<b>62.9</b>	<b>62.5</b>	<b>61.8</b>	<b>62.1</b>	<b>62.0</b>	<b>60.8</b>	<b>60.2</b>	<b>60.0</b>	<b>60.2</b>	<b>61.1</b>	<b>61.3</b>	<b>62.1</b>	<b>62.3</b>	<b>64.7</b>
Not in education or training - in employment	25.6	24.1	23.6	24.8	25.8	27.4	25.8	26.8	26.7	27.0	27.4	24.9	24.0	23.8	20.7	18.3
Not in any education, employment or training (NEET)	13.4	14.3	13.5	12.7	12.4	10.4	12.2	12.5	13.1	13.0	12.4	14.0	14.7	14.0	17.0	16.9
<b>Total not in any education or training</b>	<b>39.0</b>	<b>38.4</b>	<b>37.1</b>	<b>37.5</b>	<b>38.2</b>	<b>37.9</b>	<b>38.0</b>	<b>39.2</b>	<b>39.8</b>	<b>40.0</b>	<b>39.8</b>	<b>38.9</b>	<b>38.7</b>	<b>37.9</b>	<b>37.7</b>	<b>35.3</b>
<i>Sub total for information:</i>																
<b>Total Education and WBL<sup>5</sup></b>	<b>55.5</b>	<b>56.6</b>	<b>57.8</b>	<b>56.7</b>	<b>55.8</b>	<b>56.0</b>	<b>55.5</b>	<b>53.8</b>	<b>53.1</b>	<b>52.6</b>	<b>53.0</b>	<b>54.3</b>	<b>54.1</b>	<b>54.7</b>	<b>55.4</b>	<b>58.8</b>
<b>Population (thousands)</b>	<b>548.5</b>	<b>529.0</b>	<b>542.0</b>	<b>589.1</b>	<b>605.9</b>	<b>597.5</b>	<b>585.5</b>	<b>601.6</b>	<b>621.7</b>	<b>650.6</b>	<b>649.8</b>	<b>664.4</b>	<b>681.7</b>	<b>674.3</b>	<b>684.1</b>	<b>686.7</b>
<b>Aged 16-18</b>																
<b>Education and training</b>																
Full-time education	57.0	57.9	57.7	56.4	55.8	56.9	57.0	56.1	56.6	56.7	57.9	59.7	61.4	62.8	64.7	67.5
Work Based Learning (WBL)	11.3	10.4	10.2	9.8	9.6	9.4	9.3	8.5	8.0	8.1	7.7	7.3	6.7	6.8	6.6	6.4
Employer Funded Training (EFT)	5.3	4.9	5.3	5.6	5.7	5.6	4.8	5.0	5.0	5.1	4.8	4.6	4.5	4.4	3.9	3.1
Other education and training (OET) <sup>3</sup>	5.4	4.9	5.1	5.4	5.3	5.1	5.6	5.7	5.7	5.6	5.4	5.1	4.7	4.6	4.6	5.3
<b>Total Education and training<sup>4</sup></b>	<b>78.0</b>	<b>77.4</b>	<b>77.7</b>	<b>76.8</b>	<b>76.0</b>	<b>76.7</b>	<b>76.5</b>	<b>75.1</b>	<b>75.0</b>	<b>75.3</b>	<b>75.7</b>	<b>76.5</b>	<b>77.1</b>	<b>78.4</b>	<b>79.7</b>	<b>82.1</b>
Not in education or training - in employment	13.5	13.4	12.3	14.3	14.7	15.1	14.8	15.0	15.0	15.2	14.7	12.8	12.5	12.1	10.1	8.3
Not in any education, employment or training (NEET)	8.4	9.2	9.9	8.9	9.2	8.1	8.7	9.9	10.0	9.5	9.6	10.7	10.4	9.5	10.3	9.6
<b>Total not in any education or training</b>	<b>22.0</b>	<b>22.6</b>	<b>22.3</b>	<b>23.2</b>	<b>24.0</b>	<b>23.3</b>	<b>23.5</b>	<b>24.9</b>	<b>25.0</b>	<b>24.7</b>	<b>24.3</b>	<b>23.5</b>	<b>22.9</b>	<b>21.6</b>	<b>20.3</b>	<b>17.9</b>
<i>Sub total for information:</i>																
<b>Total Education and WBL<sup>5</sup></b>	<b>74.7</b>	<b>74.3</b>	<b>74.1</b>	<b>72.8</b>	<b>71.7</b>	<b>72.5</b>	<b>72.1</b>	<b>70.4</b>	<b>70.2</b>	<b>70.3</b>	<b>70.9</b>	<b>72.0</b>	<b>72.5</b>	<b>73.7</b>	<b>75.6</b>	<b>78.8</b>
<b>Population (thousands)</b>	<b>1,624.5</b>	<b>1,668.4</b>	<b>1,748.7</b>	<b>1,806.3</b>	<b>1,804.2</b>	<b>1,786.4</b>	<b>1,790.3</b>	<b>1,847.6</b>	<b>1,892.2</b>	<b>1,935.8</b>	<b>1,969.3</b>	<b>1,993.6</b>	<b>2,012.7</b>	<b>2,017.1</b>	<b>2,017.5</b>	<b>1,989.9</b>

1 Time series back to 1985 are available online at [www.education.gov.uk/rsgateway](http://www.education.gov.uk/rsgateway)

2 Participation estimates may be slightly underestimated for 16 year olds between 1999 and 2000; 17 year olds between 2000 and 2001; and 18 year olds 2001 and 2002. See paragraphs 9-11 of SFR 03/2005 for further information.

3 Includes part-time education not funded by employers or through WBL; also full- or part-time education in independent FE and HE institutions

4 Total of all full-time education and WBL (less WBL in full-time education) plus EFT and OET

5 It is the total of all full-time and part-time education and WBL (less WBL in full-time education), equivalent to local level estimates for education and training.

6 There is a discontinuity from 2002 onwards whereby participation in External Institutions and Specialist Designated Institutions are included in the figures. This increases overall participation rates in full-time education at each age by around 0.1 percentage point and participation rates in part-time education and overall education and training figures by around 0.4 percentage points.

**Table 6: Participation in education and YPLA funded WBL of 16 and 17 year olds by type of institution, region and gender in England, end 2008**

	16 year olds									17 year olds									16 and 17 year olds								
	Full-time education								Part-time education	Total Education and WBL <sup>4</sup>	Full-time education								Part-time education	Total Education and WBL <sup>4</sup>							
	Maintained schools <sup>1</sup>	Academies & CTCs	Independent schools <sup>2</sup>	Sixth form college	Other FE <sup>3</sup>	Total	WBL	Maintained schools <sup>1</sup>			Academies & CTCs	Independent schools <sup>2</sup>	Sixth form college	Other FE <sup>3</sup>	Total	WBL	Maintained schools <sup>1</sup>	Academies & CTCs			Independent schools <sup>2</sup>	Sixth form college	Other FE <sup>3</sup>	Total	WBL		
<b>Government Office regions</b>																											
<b>Males and females</b>																											
North East	28	1	3	8	37	77	9	4	91	21	1	3	7	31	62	12	6	80	24	1	3	7	34	70	10	5	86
North West	22	1	4	18	36	80	7	3	90	17	0	3	14	31	66	9	4	80	19	1	4	16	33	73	8	4	85
Yorkshire and the Humber	29	1	4	12	30	76	9	4	89	21	1	3	10	26	61	10	5	76	25	1	3	11	28	69	9	4	83
East Midlands	36	2	4	5	32	79	6	4	90	26	1	4	5	28	64	8	5	77	31	1	4	5	30	71	7	5	83
West Midlands	29	2	5	11	35	81	6	5	92	22	1	4	9	31	67	8	6	80	25	1	4	10	33	74	7	5	86
East of England	36	1	6	11	28	83	5	4	91	28	0	6	9	25	68	6	5	79	32	1	6	10	27	75	5	5	85
London	42	3	8	10	29	92	3	3	97	32	2	8	9	30	81	4	4	89	37	2	8	10	29	86	3	4	93
South East	31	1	10	14	28	84	4	4	91	24	1	9	12	25	70	6	4	79	27	1	9	13	26	77	5	4	85
South West	33	1	8	3	38	82	5	4	91	25	0	7	2	33	67	8	5	79	29	1	7	3	35	74	7	4	85
<b>England<sup>5</sup></b>	<b>32</b>	<b>1</b>	<b>6</b>	<b>11</b>	<b>32</b>	<b>82</b>	<b>6</b>	<b>4</b>	<b>91</b>	<b>24</b>	<b>1</b>	<b>6</b>	<b>9</b>	<b>29</b>	<b>68</b>	<b>7</b>	<b>5</b>	<b>80</b>	<b>28</b>	<b>1</b>	<b>6</b>	<b>10</b>	<b>30</b>	<b>75</b>	<b>7</b>	<b>4</b>	<b>86</b>
<b>Males</b>																											
North East	26	1	3	7	36	73	12	6	91	18	1	3	6	29	57	15	8	79	22	1	3	6	33	65	13	7	85
North West	21	1	4	15	36	77	8	4	89	15	0	4	12	30	62	11	5	79	18	1	4	14	33	69	10	5	84
Yorkshire and the Humber	27	1	4	11	30	72	11	5	88	19	0	3	8	26	57	12	6	75	23	1	3	9	28	65	11	5	81
East Midlands	33	2	4	5	32	76	7	5	88	24	1	4	4	27	59	9	6	74	28	1	4	4	29	68	8	5	81
West Midlands	27	2	5	9	35	78	7	5	90	20	1	4	8	30	63	9	6	78	24	1	5	9	32	70	8	6	84
East of England	34	1	7	10	28	80	6	5	91	26	0	6	8	24	65	7	6	78	30	1	7	9	26	72	6	6	84
London	39	3	8	9	29	89	3	3	95	29	2	8	8	30	76	4	5	85	34	2	8	8	30	82	4	4	90
South East	30	1	10	13	28	81	4	4	89	22	1	9	11	24	66	7	5	78	26	1	9	12	26	73	6	5	83
South West	31	1	7	2	37	78	7	4	89	22	0	7	2	31	62	10	5	78	27	1	7	2	34	70	8	5	83
<b>England<sup>5</sup></b>	<b>30</b>	<b>1</b>	<b>6</b>	<b>10</b>	<b>32</b>	<b>79</b>	<b>7</b>	<b>4</b>	<b>90</b>	<b>22</b>	<b>1</b>	<b>6</b>	<b>8</b>	<b>28</b>	<b>64</b>	<b>9</b>	<b>6</b>	<b>78</b>	<b>26</b>	<b>1</b>	<b>6</b>	<b>9</b>	<b>30</b>	<b>71</b>	<b>8</b>	<b>5</b>	<b>84</b>
<b>Females</b>																											
North East	30	1	3	10	38	82	6	3	91	23	1	3	8	33	68	9	5	82	27	1	3	9	36	75	7	4	86
North West	23	1	3	20	36	83	6	3	91	19	1	3	16	32	71	8	3	82	21	1	3	18	34	77	7	3	86
Yorkshire and the Humber	32	1	4	14	30	80	6	3	90	24	1	3	12	27	66	8	4	78	28	1	3	13	28	73	7	4	84
East Midlands	39	2	4	6	32	83	6	4	92	29	1	4	5	29	68	7	4	80	34	1	4	6	31	76	6	4	86
West Midlands	31	2	4	12	35	85	5	4	94	23	1	4	10	32	71	7	5	83	27	2	4	11	34	78	6	5	88
East of England	38	1	6	12	28	86	3	3	92	30	0	6	10	26	72	5	4	81	34	1	6	11	27	78	4	4	86
London	44	2	9	12	28	95	2	3	100	36	2	8	10	30	86	3	4	93	40	2	8	11	29	90	3	3	97
South East	32	1	10	16	28	87	3	3	92	25	1	9	13	26	74	4	3	81	29	1	9	14	27	80	4	3	86
South West	35	1	8	3	39	86	4	3	93	27	0	7	3	35	72	6	4	81	31	1	8	3	37	79	5	4	87
<b>England<sup>5</sup></b>	<b>34</b>	<b>1</b>	<b>6</b>	<b>12</b>	<b>32</b>	<b>85</b>	<b>4</b>	<b>3</b>	<b>93</b>	<b>26</b>	<b>1</b>	<b>6</b>	<b>10</b>	<b>30</b>	<b>73</b>	<b>6</b>	<b>4</b>	<b>83</b>	<b>30</b>	<b>1</b>	<b>6</b>	<b>11</b>	<b>31</b>	<b>79</b>	<b>5</b>	<b>4</b>	<b>88</b>

1 Includes all pupils in maintained schools, maintained special schools and pupil referral units.

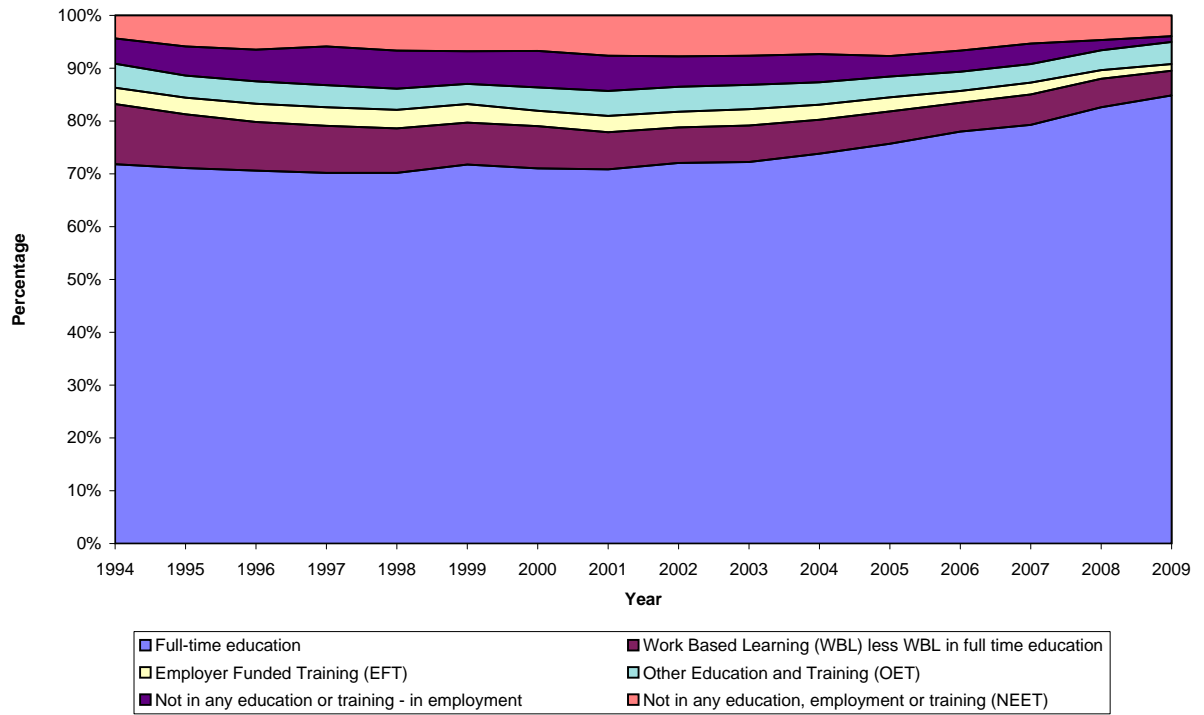
2 Includes all pupils in independent schools and non-maintained special schools.

3 Includes all learners in General FE, tertiary and specialist colleges (e.g. agriculture colleges), FE provision funded by the YPLA delivered in HEIs, and learners in HE.

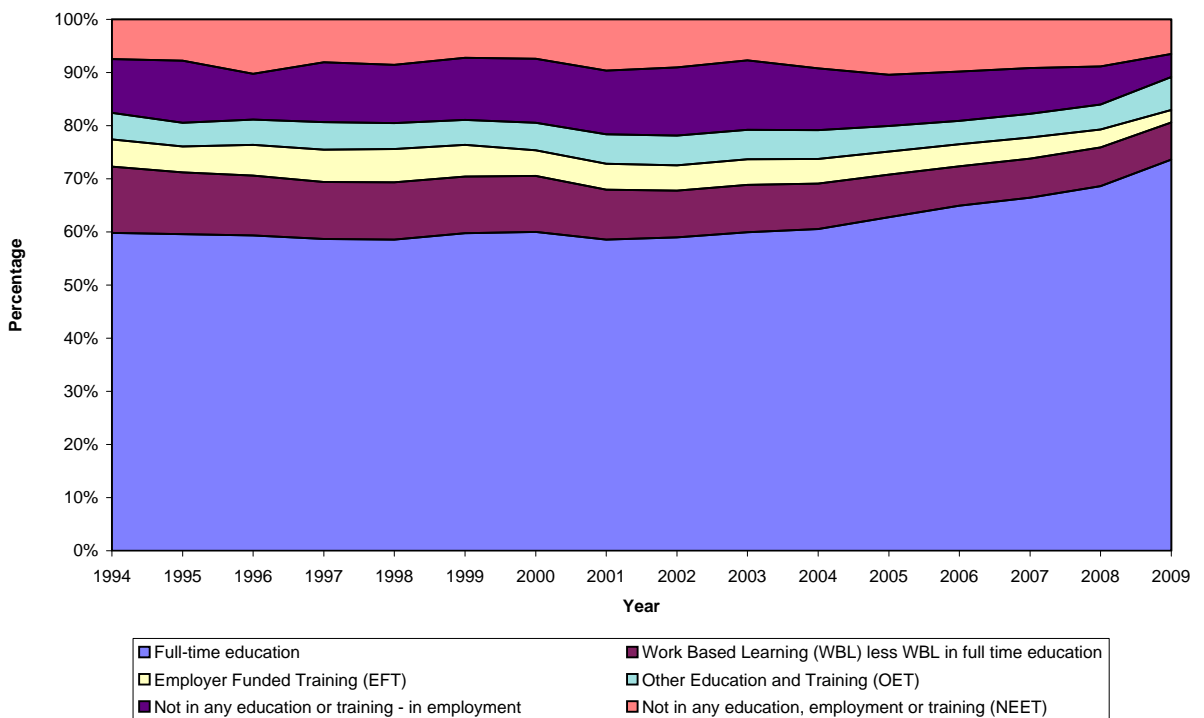
4 Total of all full-time and part-time education and WBL, less WBL provision in education institutions.

5 Definitive national figures for participation in education and work based learning are shown in table 1

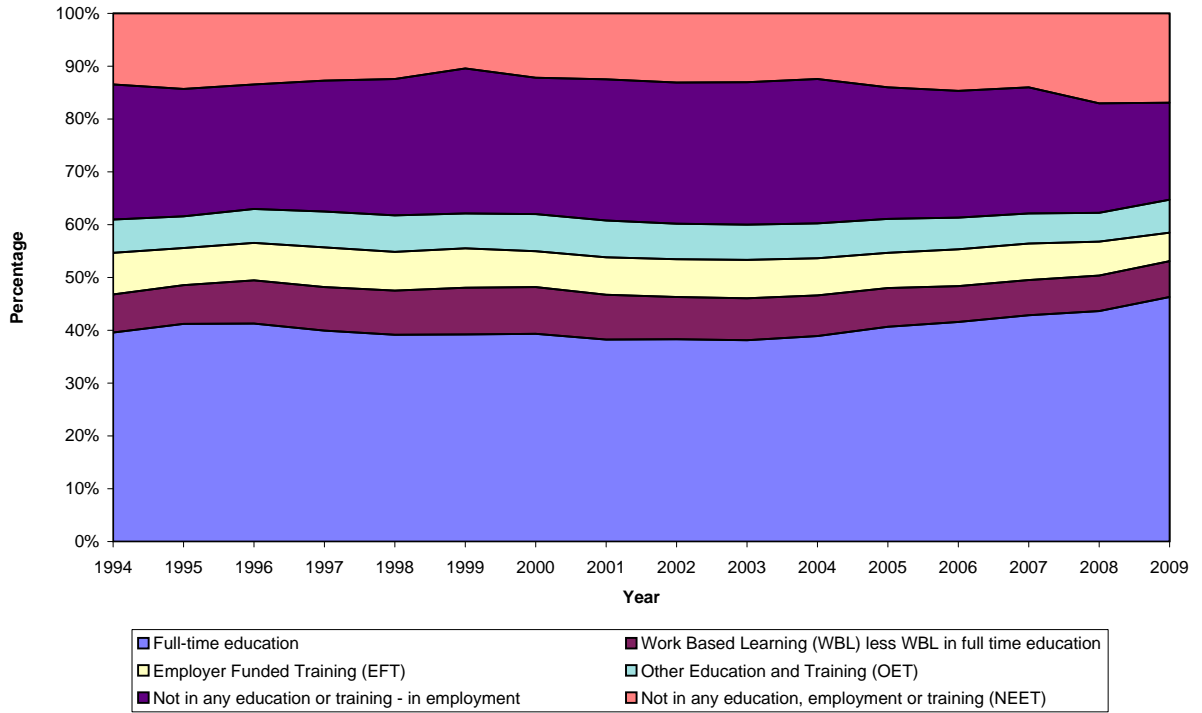
**Figure 1: Participation of 16 year olds in education and training, England, 1994 to 2009**



**Figure 2: Participation of 17 year olds in education and training, England, 1994 to 2009**



**Figure 3: Participation of 18 year olds in education and training, England, 1994 to 2009**



**Figure 4: Participation of 16-18 year olds in education and training, England, 1994 to 2009**

