



Department
of Energy &
Climate Change

National Energy Efficiency Data- Framework Anonymised dataset

July 2014



DECC have published two datasets of anonymised household level data based on the National Energy Efficiency Data-Framework (NEED).

Public Use File (PUF)

A sample of 49,815 records selected to be representative of the housing stock (based on Region, property age, property type and floor area band). This dataset is available now to all via the NEED pages of the Government website and data.gov.uk: <https://www.gov.uk/government/publications/national-energy-efficiency-data-framework-need-anonymised-data-2014>.

End User Licence File (EUL)

A sample of 4 million records (4,086,448). This dataset is available from the UK Data Archive via an end user licence: <http://discover.ukdataservice.ac.uk/catalogue/?sn=7518>.

These two datasets contain:

- General variables;
- Gas and Electricity consumption variables; and
- Property variables including energy efficiency measures installed.

A full list of variables contained in the datasets is on slide 3. Slide 4 shows how average consumption for the PUF compares with DECC published official statistics from NEED.

The consultation document and response, including more information on the datasets, is here:

<https://www.gov.uk/government/consultations/national-energy-efficiency-data-framework-making-data-available>.

More details on NEED including DECC's official statistics are available here:

<https://www.gov.uk/government/collections/national-energy-efficiency-data-need-framework>.

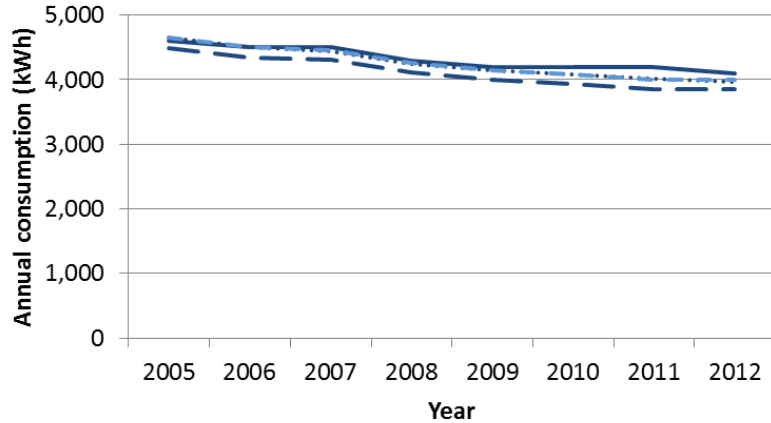
For enquiries, feedback, or to be added to the NEED distribution list email: EnergyEfficiency.stats@decc.gsi.gov.uk.

Variable	Description
HH_ID	Household identifier. Created specifically for these datasets.
REGION	Former Government Office Regions (GORs) in England, and Wales.
IMD_ENG	Index of multiple deprivation (IMD) 2010 for England, quintiles. Households are allocated based on the IMD rank of the Lower Layer Super Output Area (LSOA) they are located in.
IMD_WALES	Welsh Index of multiple deprivation 2011. Households are allocated to one of five bands based on the deprivation rank of the LSOA they are located in.
FP_ENG	EUL only. Fuel Poverty Indicator. Households are allocated to five bands based on the estimate of the proportion of household in fuel poverty in the LSOA they are located in; low income high cost definition.
EPC_INS_DATE	EUL only. Provides information on the date of the EPC inspection (grouped by pre-2010 and 2010 or later).
GconsYEAR	Annual gas consumption in kWh (weather corrected).
GconsYEARValid	Flag indicating records with valid gas consumption and off gas households.
EconsYEAR	Annual electricity consumption in kWh.
EconsYEARValid	Flag indicating record with valid electricity consumption.
E7Flag2012	Flag showing households with Economy 7 electricity meters.
MAIN_HEAT_FUEL	Description of main heating fuel (gas or other).
PROP_AGE	Age of construction of the property (six bands).
PROP_TYPE	Type of property (e.g. detached, semi-detached).
FLOOR_AREA_BAND	Floor area band.
EE_BAND	Energy Efficiency Band.
LOFT_DEPTH	Depth of loft insulation (150mm or more, or less than 150 mm).
WALL_CONS	Wall construction (cavity wall or other).
CWI	Cavity wall insulation installed through a Government scheme.
CWI_YEAR	Year cavity wall insulation installed.
LI	Loft insulation installed through a Government scheme.
LI_YEAR	Year of loft insulation installed.
BOILER	Boiler installed in property.
BOILER_YEAR	Year of boiler installation.
WEIGHT	EUL only. Weighting based on Region, property age, property type and floor area band.



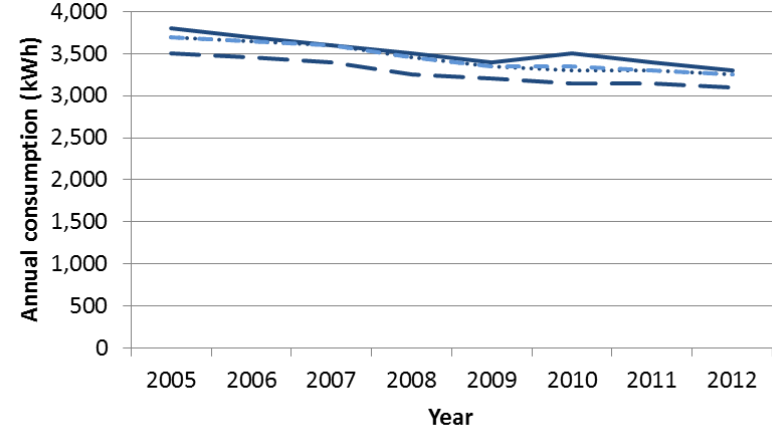
Comparison with published data*

Electricity - Mean



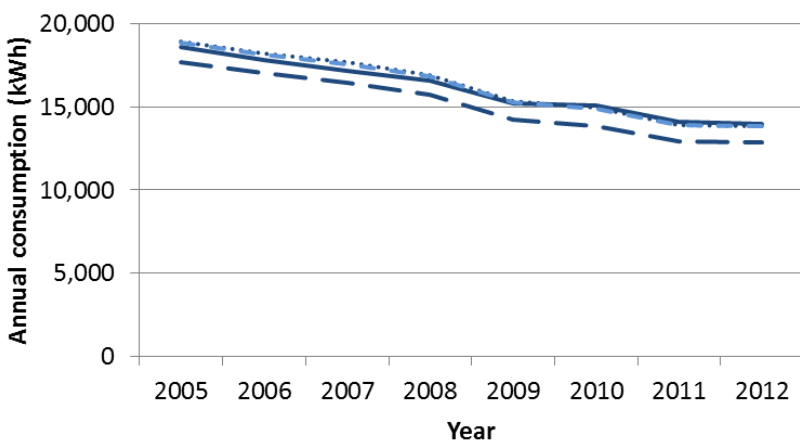
— NEED Published data PUF - - - EUL - weighted - . - EUL - unweighted

Electricity - Median



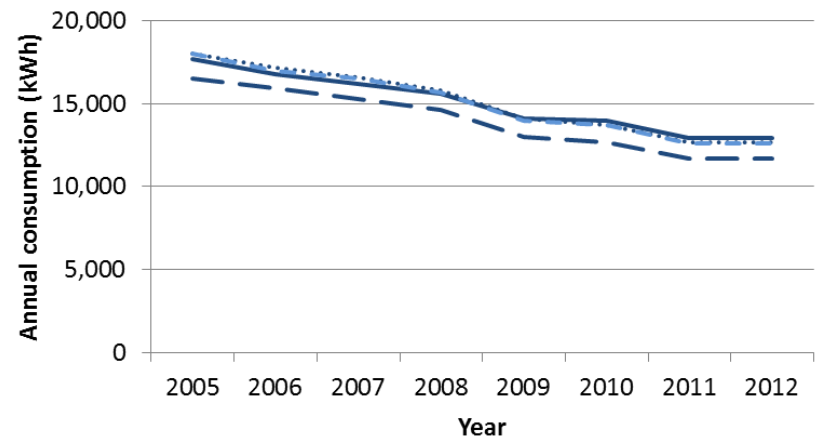
— NEED Published data PUF - - - EUL - weighted - . - EUL - unweighted

Gas - Mean



— NEED published data PUF - - - EUL - weighted - . - EUL - unweighted

Gas - Median



— NEED published data PUF - - - EUL - weighted - . - EUL - unweighted