



Department
for Business
Innovation & Skills



Monthly Statistics of Building Materials and Components

January 2013

No. 455

NOTES

In tables where figures have been rounded to the nearest final digit, there may be an apparent slight discrepancy between the sum of the constituent items and the total as shown.

Symbols. The following symbols have been used throughout.

- | | |
|-----------------------|-------------------|
| .. = not available | (P) = provisional |
| - = nil or negligible | (R) = revised |

All figures are subject to revisions.

Unless otherwise stated, revisions are due to more complete information from late returns. If any figures are revised by 5% or more from the previously published value, an explanation will be provided.

The United Kingdom Statistics Authority has designated these statistics as National Statistics, in accordance with the Statistics and Registration Service Act 2007 and signifying compliance with the Code of Practice for Official Statistics.

Designation can be broadly interpreted to mean that the statistics:

- meet identified user needs;
- are well explained and readily accessible;
- are produced according to sound methods, and
- are managed impartially and objectively in the public interest.

Unless otherwise stated, the statistics published in this volume have been collected by the Office for National Statistics on behalf of the Department for Business, Innovation & Skills.

Lead Statistician: James Liley

For enquiries or further information about the contents of this publication please contact:

Construction Market Intelligence, 1 Victoria Street,
London, SW1H 0ET;
Telephone : 020 - 7215 - 6221
E-mail : materialstats@bis.gsi.gov.uk.

URN 13/313b

6 February 2013

CONTENTS

	<u>Page</u>
Table 1 : Construction Material Price Indices	1
Table 2 : Price Indices of Construction Materials – monthly	2 & 3
Table 3 : Price Indices of Construction Materials – annual averages	4
Table 4 : Sales of Sand and Gravel in Great Britain	5
Table 5 : Sales of Sand and Gravel by English Regions, Wales and Scotland	6 & 7
Table 6 : Sales of Sand and Gravel by English and Welsh Counties and Scottish Regions	8 & 9
Table 7 : Slate : Production, Deliveries and Stocks	10
Chart 1 : Deliveries of Sand & Gravel and Ready-Mixed Concrete	11
Table 8 : Cement and Clinker : Production, Deliveries and Stocks	12
Chart 2 : Deliveries of Bricks, Concrete Building Blocks and Cement	13
Table 9 : Bricks : Production, Deliveries and Stocks for Great Britain	14 & 15
Table 10 : Bricks : Production, Deliveries and Stocks by English Regions, Wales and Scotland	16 to 19
Table 11 : Concrete Building Blocks : Production, Deliveries and Stocks for Great Britain	20 & 21
Table 12 : Concrete Building Blocks : Production, Deliveries and Stocks by English Regions, Wales and Scotland	22 & 23
Table 13 : Concrete Roofing Tiles and Ready-Mixed Concrete	24
Chart 3 : Comparison of Imports and Exports	25
Table 14 : Value of Overseas Trade in Selected Materials and Components for Constructional Use : Imports (cif) and Exports (fob)	26 to 35

Table 1: Construction Material Price Indices

United Kingdom	2005 = 100					
	2007	2008	2009	2010	2011	2012
(a) New Housing						
January	109.8	115.3	119.7	122.3	130.1	134.9
February	111.7	116.8	120.6	122.9	131.2	135.5
March	112.4	117.5	120.6	123.4	132.0	137.0
April	112.3	118.2	120.2	125.2	132.6	137.3
May	113.7	119.0	119.8	127.2	133.4	137.4
June	114.4	118.7	119.5	128.3	134.6	136.6
July	115.2	120.0	119.1	129.0	135.0	136.6
August	116.3	120.5	120.2	129.5	135.7	136.5
September	116.3	120.4	121.0	129.9	135.6	136.3
October	116.4	121.1	121.7	129.8	135.8	136.8 (P)
November	116.0	120.4	122.6	130.2	135.6	136.4 (P)
December	115.8	119.7	122.3	129.9	135.2	136.1 (P)
Annual Average	114.2	119.0	120.6	127.3	133.9	136.5 (P)
(b) Other New Work						
January	110.1	114.3	122.9	124.6	135.1	144.5
February	111.7	116.2	122.1	125.0	137.1	145.1
March	112.1	117.3	121.6	125.9	139.1	145.1
April	112.0	119.2	120.7	129.4	141.3	145.3
May	112.9	121.6	120.7	132.0	142.5	144.7
June	113.3	123.7	120.7	133.8	143.5	144.5
July	113.9	126.4	120.7	133.1	143.4	143.5
August	114.8	127.7	120.9	132.8	143.6	143.7
September	114.4	128.6	121.8	132.9	143.5	144.4
October	114.5	129.3	123.5	132.5	143.3	145.0 (P)
November	114.0	126.6	125.3	132.3	143.0	144.1 (P)
December	113.6	124.7	125.0	132.3	143.3	143.7 (P)
Annual Average	113.1	123.0	122.2	130.6	141.6	144.5 (P)
(c) Repair and Maintenance						
January	111.0	116.0	122.1	125.2	134.3	140.3
February	112.9	117.2	122.0	126.1	135.7	141.2
March	113.5	117.9	121.6	126.4	136.7	142.6
April	113.3	119.2	121.2	128.4	137.6	143.1
May	114.4	120.4	121.0	131.0	138.5	143.0
June	115.3	121.2	120.7	132.2	139.6	142.3
July	116.0	122.9	120.6	132.9	140.4	141.9
August	116.9	123.7	121.7	133.4	141.2	141.8
September	117.2	123.8	122.8	133.7	140.9	141.9
October	117.2	124.7	123.9	133.7	141.1	142.3 (P)
November	116.6	123.5	125.2	134.2	140.9	141.7 (P)
December	116.4	122.4	125.0	133.8	140.7	141.3 (P)
Annual Average	115.1	121.1	122.3	130.9	139.0	142.0 (P)
(d) All Work						
January	110.6	115.3	122.5	124.6	134.2	141.8
February	112.3	116.9	122.0	125.2	135.9	142.2
March	112.8	117.9	121.6	125.9	137.4	143.5
April	112.6	119.2	121.0	128.5	139.2	143.8
May	113.8	121.0	120.9	131.0	140.2	143.3
June	114.3	122.3	120.7	132.6	141.3	142.8
July	114.7	124.4	120.6	132.4	141.5	142.0
August	115.8	125.7	121.1	132.5	141.9	142.4
September	116.0	126.2	122.1	132.5	141.7	142.7
October	116.0	126.9	123.4	132.2	141.6	143.3 (P)
November	115.5	125.0	124.9	132.4	141.3	142.7 (P)
December	115.2	123.5	124.7	132.0	141.5	142.1 (P)
Annual Average	114.1	122.0	122.1	130.2	139.8	142.7 (P)

Note: These indices are weighted averages of Producer Price Indices. They do not include electrical or mechanical engineering materials.

Source ONS/BIS

PRICES

Table 2: Price Indices of Construction Materials

United Kingdom

	2011 Dec	2012 Jan	Feb	Mar	Apr	May	Jun
AGGREGATES							
Crushed rock - including levy	123.0	122.9	123.2	124.3	123.9	121.7	122.1
- excluding levy	123.3	122.8	122.8	124.3	123.8	121.2	121.3
Sand & gravel - including levy	123.4	128.4	128.2	129.1	128.8	126.7	131.2
- excluding levy	123.2	130.0	129.5	131.2	129.8	127.3	132.4
Coated roadstone - excluding levy	141.0	152.4	152.3	153.7	153.4	153.4	152.9
CEMENT AND CONCRETE							
Cement **	136.2	140.8	141.3	142.2	144.6	145.2	145.1
Ready-mixed concrete **	114.6	117.2	118.4	118.8	118.9	118.8	118.2
Pre-cast concrete products **	120.6	121.1	122.2	122.5	122.5	122.9	123.2
of which : Blocks, bricks, tiles & flagstones **	125.2	125.9	127.5	127.7	128.3	128.7	129.2
Concrete reinforcing bars	167.9	171.5	172.3	170.6	168.9	166.4	163.1
CLAY PRODUCTS							
All Bricks **	119.4	119.1	123.7	123.6	125.0	122.6	125.0
Ceramic tiles *	90.7	89.2	89.5	89.5	89.7	90.3	94.0
Ceramic sanitaryware *	148.8	151.2	156.2	156.2	160.6	160.7	160.1
TIMBER AND JOINERY							
Imported sawn or planed wood	152.1	150.6	150.0	151.1	152.6	152.6	152.2
Imported plywood	117.0	116.9	116.6	119.2	122.3	122.2	121.8
Sawn wood **	141.5	141.0	141.0	141.6	143.1	142.8	143.2
Particle Board **	137.0	136.3	138.4	138.5	139.3	140.0	140.9
Builders woodwork **	131.8	132.9	133.5	130.6	131.3	131.3	131.6
of which : Doors & windows **	139.3	141.8	143.1	135.3	136.2	136.1	136.1
METAL PRODUCTS							
Fabricated structural steel	128.2	127.9	128.5	130.1	131.3	132.1	131.0
Doors & windows **	102.7	102.6	101.7	101.5	101.5	101.4	101.2
Central heating boilers **	118.4	118.6	120.0	120.0	118.6	118.6	118.6
Taps and Valves for sanitaryware	171.3	174.4	174.4	174.4	174.4	174.0	..
PLASTIC PRODUCTS							
Pipes and fittings (rigid) **	129.1	129.2	128.6	131.0	130.9	130.7	131.0
Pipes and fittings (flexible) **	135.4	136.2	136.3	136.3	136.8	136.7	136.8
Sanitaryware *	116.5	116.7	117.0	117.6	117.6	118.6	118.6
Doors & windows **	112.3	112.4	112.3	112.5	112.5	112.5	112.6
OTHER BUILDING MATERIALS							
Asphalt products *
Insulating materials (thermal or acoustic) **	115.0	115.3	117.7	117.9	117.1	116.7	116.5
Paint (aqueous) **	131.1	132.0	133.8	133.9	134.6	133.8	133.7
Paint (non-aqueous) **	125.9	127.8	130.3	130.0	130.0	131.0	131.0
Lighting equipment for buildings *
Lighting equipment for roads **	113.0	113.0	112.9	112.5	114.5	114.5	114.5
Electric water heaters *	145.1	145.2	145.2	145.2	145.0	146.4	146.3
Kitchen furniture **	116.0	116.4	116.8	116.9	117.1	117.1	117.2

Notes : 1. Most of these indices, which are compiled by the Office for National Statistics, are a selection of producer price indices.

The complete list is available online at www.statistics.gov.uk, by searching for the reference MM22.

*The Office for National Statistics state that these Indices are based on relatively few quotes and in the long term should not be relied upon for contractual purposes.

** These index values are considered less reliable mainly due to lack of market coverage.

2005=100

Jul	Aug	Sep	Oct	Nov (P)	Dec (P)	
						AGGREGATES
120.4	118.2	120.5 (R)	118.9	118.7	118.7	Crushed rock - including levy
119.3	116.6	119.2 (R)	118.5	118.2	118.2	- excluding levy
132.1	132.3	132.5	132.6	134.0	134.0	Sand & gravel - including levy
133.2	133.6	133.1	134.0	135.7	135.7	- excluding levy
151.1	150.4	151.3	151.9	152.4	152.4	Coated roadstone - excluding levy
						CEMENT AND CONCRETE
144.7	144.8 (R)	145.0 (R)	144.8	144.1	144.1	Cement **
116.8	118.1	117.9	117.5	116.8	116.6	Ready-mixed concrete **
123.1	123.6	122.9	122.8	122.5	122.3	Pre-cast concrete products **
128.8	128.9	127.8	127.7	127.4	127.6	of which : Blocks, bricks, tiles & flagstones **
160.4	157.9	159.0	157.1	156.1	..	Concrete reinforcing bars
						CLAY PRODUCTS
125.6	124.7	125.5	125.6	125.4	125.2	All Bricks **
94.0	94.0	94.0	Ceramic tiles *
159.3	160.3	159.6	Ceramic sanitaryware *
						TIMBER AND JOINERY
152.0	151.9	151.2	150.6	148.3	148.1	Imported sawn or planed wood
124.5	121.1	121.8	121.9	122.1	119.8	Imported plywood
144.6	144.2	144.7	144.2	142.2	143.0	Sawn wood **
141.1	141.5	141.8	142.6	145.4	145.5	Particle Board **
131.8	131.8	132.0	131.7	131.5	131.6	Builders woodwork **
136.0	136.2	136.9	136.4	135.4	135.8	of which : Doors & windows **
						METAL PRODUCTS
129.3	129.0	128.1	127.7	126.1	124.8	Fabricated structural steel
101.2	101.2	101.1	101.2	100.9	100.7	Doors & windows **
118.6	118.6	118.6	118.6	118.6	118.6	Central heating boilers **
..	Taps and Valves for sanitaryware
						PLASTIC PRODUCTS
132.4	133.4	133.9	134.2	135.0	134.2	Pipes and fittings (rigid) **
136.5	136.7	137.0	138.8	138.4	138.1	Pipes and fittings (flexible) **
118.6	118.6	118.6 (P)	118.6	118.6	118.6	Sanitaryware *
112.6	112.6	113.1	112.9	112.6	115.3	Doors & windows **
						OTHER BUILDING MATERIALS
..	Asphalt products *
118.5	118.0	118.2	118.4	118.6	117.9	Insulating materials (thermal or acoustic) **
134.1	134.1	134.0	133.9	132.7	132.7	Paint (aqueous) **
131.0	131.0	130.5	130.8	130.9	131.2	Paint (non-aqueous) **
..	Lighting equipment for buildings *
114.5	114.5	114.5	114.4	114.4	114.4	Lighting equipment for roads **
148.6	148.7	148.5	148.4	147.9	147.7	Electric water heaters *
117.1	117.0	117.0	117.0	116.7	116.1	Kitchen furniture **

Source : ONS

Note: Due to the change from SIC03 to SIC07 the composition of the Aggregate and Coated Roadstone (excluding levy) indices was altered. Previous indices are available from earlier editions of these tables.

PRICES

Table 3: Price Indices of Construction Materials - Annual Averages

United Kingdom							2005=100
		2007	2008	2009	2010	2011	2012
							(P)
AGGREGATES							
Crushed rock	- including levy	110.0	115.5	121.0	121.1
	- excluding levy	103.1	110.8	121.0	120.5
Sand & gravel	- including levy	116.2	121.1	121.8	130.8
	- excluding levy	115.8	121.1	121.5	132.1
Coated roadstone	- including levy	113.8	130.0	140.8
	- excluding levy	113.7	129.7	140.4	152.3
Previous Index Crushed rock	- including levy	95.2	103.4	112.3
	- excluding levy	93.6	100.6	108.4
Previous Index Sand & Gravel	- including levy	109.9	117.5	112.0
	- excluding levy	110.9	116.3	107.5
CEMENT AND CONCRETE							
Cement		114.7	128.4	138.5	133.2	135.3	143.9
Ready-mixed concrete		106.7	113.4	110.8	110.5	113.8	117.8
Plasterboard etc		101.8	104.7
Pre-cast concrete products		110.6	114.4	118.7	117.4	120.9	122.6
of which: Blocks, bricks, tiles & flagstones		112.8	115.4	121.1	121.0	125.2	128.0
Concrete re-inforcing bars		129.8	158.3	125.9	144.6	168.6	163.5
Fibre Cement Products		116.8	124.2
CLAY PRODUCTS							
All Bricks		111.1	109.0	117.2	118.8	119.3	124.3
Ceramic tiles		84.8	81.0	82.6	90.1	91.0	..
Ceramic sanitaryware		112.6	119.9	130.7	134.4	145.9	..
TIMBER AND JOINERY							
Imported sawn or planed wood		127.9	152.5	154.0	150.9
Imported plywood		110.2	119.0	116.9	120.9
Previous Index Imported Softwood		133.6	123.6	127.5
Previous Index Imported Plywood		106.5	120.7	124.1
Sawn Wood		122.0	127.8	118.7	135.1	141.7	143.0
Particle Board		112.7	113.8	111.4	117.3	133.0	140.9
Builders woodwork		108.0	113.6	119.7	125.5	129.8	131.8
of which							
Doors & windows		108.7	116.7	127.1	130.9	136.6	137.1
METAL PRODUCTS							
Fabricated structural steel		118.1	137.2	106.0	117.9	132.3	128.8
Doors & windows		87.5	87.0	89.8	91.2	95.2	101.4
Screws etc		105.9	106.6
Other builders' ironmongery		105.3	108.5	123.6
Central heating boilers		105.0	106.3	109.8	113.4	117.6	118.8
Central heating pumps		114.5	120.2
Taps & valves (domestic)		..	136.6	152.1	158.2	168.9	..
Metal sanitaryware		108.3	106.3	124.6
Copper pipes		163.2	154.1
PLASTIC PRODUCTS							
Pipes and fittings (rigid)		112.2	118.1	121.4	121.5	127.3	132.0
Pipes and fittings (flexible)		110.6	115.3	129.9	130.3	134.1	137.1
Sanitaryware		102.6	112.0	113.7	114.7	116.1	118.1
Doors & windows		103.5	106.2	107.9	108.1	110.8	112.8
Floor covering		109.8
OTHER BUILDING MATERIALS							
Asphalt products		132.2	140.4	151.4	162.1
Insulating materials (thermal or acoustic)		106.0	105.6	104.0	103.2	109.6	117.6
Paint (aqueous)		104.6	112.7	118.3	133.6
Paint (non-aqueous)		102.6	110.0	113.0	114.0	121.9	130.5
Lighting equipment for buildings		..	102.3	107.4	107.5
Lighting equipment for roads		100.9	105.2	112.3	110.6	110.7	114.1
Electric heating apparatus		105.4	112.0
Electric water heaters		119.8	122.3	132.6	136.7	142.5	146.9
Kitchen furniture		99.7	103.6	106.6	109.1	112.3	116.9

Source : ONS

Note 1: Due to the change from SIC03 to SIC07 the composition of the Aggregate and Wood Indices has been altered.

As such we will publish the Previous Indices alongside the Current Indices.

Note 2: These indices, which are compiled by the Office for National Statistics, are a selection of producer price indices. The complete list is published monthly by the ONS in the Business Monitor MM22.

MINING AND QUARRYING

Table 4 : Sales of Sand and Gravel in Great Britain

Great Britain		Thousand tonnes					
	Sand		Gravel	Sand & Gravel	Sand, Gravel & Hoggin	Sand & Gravel	of which
	for Building	for Concreting	for Concreting & other uses	for Coating	for Fill	Total	Marine-Dredged
2001	13,926	33,675	36,799	2,596	10,460	97,456	13,611
2002	11,152	30,334	35,642	2,106	6,279	85,513	12,833
2003	11,474	31,349	31,725	1,493	6,498	82,539	12,249
2004	11,017	32,366	30,184	1,380	6,399	81,346	12,996
2005	12,419	30,704	30,648	1,569	5,173	80,513	13,025
2006	9,499	29,893	31,963	2,346	4,195	77,896	13,974
2007	8,649	29,803	31,114	1,695	4,254	75,515	13,777
2008	8,864	28,922	28,297	74,651	12,582
2009	7,270	21,582	58,482	9,589
2010	6,074	19,887	54,530	9,341
2011	6,041	23,489	57,062	11,169
2006 Q3	2,603	7,725	8,602	640	1,144	20,714	3,498
Q4	2,125	6,942	7,271	560	958	17,856	3,018
2007 Q1	2,081	6,919	7,242	443	904	17,589	3,177
Q2	2,305	7,762	8,202	432	1,179	19,880	3,596
Q3	2,304	7,829	8,191	398	1,162	19,884	3,675
Q4	1,959	7,293	7,479	422	1,009	18,162	3,329
2008 Q1	2,151	7,156	7,286	379	1,180	18,152	3,035
Q2	2,385	7,724	7,668	456	2,041	20,274	3,541
Q3	2,279	7,644	7,091	19,341	3,337
Q4	2,049	6,398	6,252	490	1,695	16,884	2,669
2009 Q1	1,727	5,313	5,330	695	1,566	14,631	2,389
Q2	1,916	5,637	5,756	15,359	2,637
Q3	1,992	5,598	14,878	2,457
Q4	1,635	5,034	1,432	13,614	2,106
2010 Q1	1,539	4,952	13,711	2,131
Q2	1,585	4,983	13,940	2,444
Q3	1,584	5,268	14,112	2,592
Q4	1,366	4,684	12,767	2,174
2011 Q1	1,572	5,665	14,150	2,746
Q2	1,579	6,127	5,291	14,831	2,923
Q3	1,533	6,085	5,160	14,684	2,937
Q4	1,357	5,612	4,719	13,397	2,563
2012 Q1	1,481	5,635	5,039	13,894	2,675
Q2	1,712	5,608	5,633	14,474	2,609
Q3	1,778	5,612	6,259	15,192	2,749

Note : The figures above are from a quarterly sample inquiry whereas those below are from the Annual Minerals Raised Inquiry, a census.

The two inquiries differ because some respondents are only able to provide estimated information for the quarterly inquiry.

1999	11,356	31,730	31,614	2,585	10,924	88,209	13,424
2000	11,758	31,167	31,797	2,461	12,051	89,234	14,356
2001	11,515	31,656	35,135	2,257	7,647	88,210	13,611
2002	11,190	31,224	32,434	2,031	5,842	82,721	12,832
2003	11,851	31,411	30,236	1,766	4,957	80,221	12,131
2004	10,688	32,529	32,346	2,437	8,058	86,057	12,996
2005	11,558	29,848	32,163	2,172	6,651	82,392	13,024
2006	9,907	29,815	31,002	2,648	6,869	80,242	13,974
2007	9,877	30,202	29,350	2,636	6,436	78,501	13,777
2008	8,527	26,885	23,388	2,222	11,106	72,127	12,621
2009	6,296	21,570	19,553	2,270	6,021	55,709	9,592
2010	6,110	20,947	18,540	2,112	6,621	54,330	9,341

MINING AND QUARRYING

Table 5 : Sales of Sand and Gravel by Standard region, Wales and Scotland

	Sand for Building	Sand for Concreting	Gravel for Concreting & other uses	Sand & Gravel for Coating	Sand, Gravel & Hoggin for Fill	Sand & Gravel Total	of which Marine- Dredged
(a) Q3 2012							
North East	26	..	1,118	..	37
Yorkshire & the Humber	128	329	305	..	54
North West	171	214	..	19	..	466	24
West Midlands	195	707	630	1,632	0
East Midlands	125	633	490	1,374	0
East of England	261	985	1,006	..	153
South East	347	1,107	1,842	34	230	3,560	2,158
South West	188	710	242	1,358	182
Wales	103	6	23	354	170
Scotland	234	574	545	119	255	1,727	0
Great Britain	1,778	5,612	6,259	15,192	2,749
of which marine-dredged	167	1,116	1,437	2,749	
(b) Q3 2011							
North East	24	57
Yorkshire & the Humber	149	367	343	..	91
North West	191	32	31	485	24
West Midlands	114	636	611	1,455	0
East Midlands	120	691	496	1,484	0
East of England	252	1,048	924	..	230
South East	262	1,510	1,646	45	..	3,753	2,298
South West	137	742	223	1,509	130
Wales	113	213	460	213
Scotland	171	528	639	94	236	1,668	0
Great Britain	1,533	6,085	5,160	14,684	2,937
of which marine-dredged	135	1,414	1,278	2,937	

Note : Regions refer to Government Office Regions

MINING AND QUARRYING

Thousand tonnes

	Sand		Gravel	Sand & Gravel	Sand, Gravel & Hoggin	Sand & Gravel	of which
	for Building	for Concreting	for Concreting & other uses	for Coating	for Fill	Total	Marine-Dredged
(c) Annual 2011							
North East	100	270
Yorkshire & the Humber	519	1,374	1,277	..	393
North West	754	123	..	1,940	96
West Midlands	505	2,458	2,358	5,695	0
East Midlands	443	2,594	1,962	5,673	0
East of England	950	4,184	3,586	..	786
South East	1,050	5,839	6,509	182	..	14,585	8,836
South West	555	2,779	5,795	502
Wales	428	1,671	740
Scotland	737	2,103	2,467	451	859	6,617	0
Great Britain	6,041	23,489	57,062	11,169
of which marine-dredged	514	5,418	11,169	
(d) Annual 2010							
North East	71	136
Yorkshire & the Humber	455	..	1,160	2,104
North West	873	167	..	1,956	97
West Midlands	..	2,136	2,624	5,704	0
East Midlands	438	2,380	2,106	236	259	5,419	0
East of England	871	3,180	3,571	..	674
South East	945	4,756	5,567	214	969	12,451	7,249
South West	538	2,072	1,132	5,697	453
Wales	548	175	1,730	732
Scotland	..	2,130	1,940	441	..	5,942	0
Great Britain	6,074	19,887	54,530	9,341
of which marine-dredged	534	4,300	9,341	

Note : Regions refer to Government Office Regions

MINING AND QUARRYING

Table 6 : Sales of Sand and Gravel by English & Welsh County and Scottish Region

Thousand tonnes

	2011			2012		
	Quarter 2	Quarter 3	Quarter 4	Quarter 1	Quarter 2	Quarter 3
NORTH EAST
Northumberland	236	189	201	550	1,014	1,231
Tyne and Wear *	17	21
Durham	53
Cleveland *
YORKSHIRE & THE HUMBER
North Yorkshire	544	533	457	448	423	437
West Yorkshire	51
South Yorkshire	..	171	137	174	178	178
Humberside *	164	172
NORTH WEST	480	485	478	..	480	466
Cumbria	122	122	121	147	141	137
Lancashire	46	46	45	33	30	29
Merseyside *	25	24	21	..	20	24
Greater Manchester	68	71	70	40	39	38
Cheshire	219	222	221	247	250	238
WEST MIDLANDS	1,436	1,455	1,333	1,441	1,564	1,632
Shropshire	148	150	137	175	188	196
Staffordshire	897	913	833	906	975	1,016
West Midlands	124	132
Warwickshire	169	170	158	..	107	108
Hereford & Worcester	156	170	180
EAST MIDLANDS	1,511	1,484	1,308	1,301	1,366	1,374
Derbyshire	225	221	199	240	249	251
Nottinghamshire	401	394	346	328	348	345
Leicestershire	254	251	214	238
Northamptonshire	76	75	67	47
Lincolnshire	555	543	482	448	470	500
EAST OF ENGLAND
Cambridgeshire	559	553	520	382	393	397
Norfolk	349	346	323	318	335	341
Suffolk *	357
Essex *
Bedfordshire	271	291	292
Hertfordshire
SOUTH EAST	3,762	3,753	3,496	3,549	3,399	3,560
Buckinghamshire	109	113	112	94
Oxfordshire	74	83	..	93	88	101
Berkshire	217	219	218	209	193	205
Greater London *	1,051	1,081	1,004	1,105	970	1,038
Surrey	251	255	252	234	228	239
Kent *	978	981	916	940	956	964
Sussex East *
Sussex West *	..	213	194	202
Hampshire *	679	626	609	574	564	613
Isle of Wight

Note : Regions refer to Government Office Regions

* Includes marine-dredged.

MINING AND QUARRYING

Thousand tonnes

	2011			2012		
	Quarter 2	Quarter 3	Quarter 4	Quarter 1	Quarter 2	Quarter 3
SOUTH WEST	1,503	1,509	1,288	1,274	1,268	1,358
Gloucestershire	..	176	..	185	180	186
Wiltshire	163	165	142	170	166	173
Avon *
Somerset *
Dorset *
Devon *	171	178
Cornwall	423	436	367
ENGLAND	12,627	12,556	11,436	11,949	12,530	13,111
WALES	460	460	406	360	347	354
Clwyd	154	152	162	145	120	116
Gwynedd *	..	42	..	33	..	35
Powys	0	0	0	1	1	1
Dyfed *
Glamorgan West *	25	23
Glamorgan Mid	3	3	3	0	0	0
Glamorgan South *
Gwent *
SCOTLAND	1,744	1,668	1,556	1,585	1,597	1,727
South of Scotland	103	96	88	96	100	109
North East Scotland	303	302	278	192	197	208
Highlands	159	159	146	140	145	151
Island Areas	16	16	15	10	10	13
East Central Scotland	105	101	93	293	290	307
West Central Scotland	640	595	561	508	500	552
Tayside and Fife	418	399	375	346	355	387
GREAT BRITAIN	14,831	14,684	13,398	13,894	14,474	15,192

Note : Regions refer to Government Office Regions

* Includes marine-dredged.

MINING AND QUARRYING

Table 7 : Slate - Production, Deliveries and Stocks

Great Britain

Tonnes

	Production			Deliveries			Stocks (a)			Deliveries
	Roofing (b)	Other (c)	Powder & Granules	Roofing (b)	Other (c)	Powder & Granules	Roofing (b)	Other (c)	Powder & Granules	Fill & Other Uses
2000	28,815	12,399	44,644	33,341	11,670	44,923	5,519	7,356	2,856	328,547
2001	30,770	14,834	47,521	33,052	13,586	47,588	3,159	8,465	2,799	383,353
2002	32,182	18,348	44,424	32,653	19,069	43,947	2,674	7,850	3,275	498,212
2003	34,471	15,623	29,003	34,700	14,576	29,240	2,477	8,849	3,416	669,818
2004
2005	2,824	10,281	5,347	..
2006	..	61,612	22,967	..	64,037	22,719	..	6,454	4,274	860,395
2007	..	65,260	19,141	..	62,646	19,431	2,563	2,521	3,746	..
2008	..	59,644	16,915	..	58,129	18,402	..	2,749	2,253	..
2009	..	33,759	9,150	22,555	34,322	10,637	2,420	2,186	766	615,346
2010	..	28,001	27,355	3,063	..	582,111
2011	..	30,665	30,437	3,245	..	662,003
2004 Q3	..	8,029	7,544	..	8,578	7,049	3,954	8,225	4,592	158,333
Q4
2005 Q1
Q2
Q3
Q4	..	13,635	7,448	..	6,194	7,635	2,824	10,281	5,347	124,188
2006 Q1	..	11,594	6,575	..	12,879	6,406	3,170	8,967	5,440	195,762
Q2	..	14,804	5,051	..	14,983	5,257	3,079	7,424	3,990	223,696
Q3	..	16,170	5,194	..	16,803	5,094	..	6,792	4,090	251,314
Q4	..	19,044	6,147	..	19,372	5,962	..	6,454	4,274	189,623
2007 Q1	..	17,787	5,571	..	16,829	5,036	6,984	4,996	4,571	376,876
Q2	..	16,577	4,315	..	14,765	4,875	3,066	5,850	4,011	346,426
Q3	..	16,017	4,672	..	15,475	4,929	2,977	6,391	3,754	..
Q4	..	14,879	4,583	..	15,577	4,591	2,563	2,521	3,746	255,249
2008 Q1	..	18,608	4,282	..	18,071	4,414	..	3,059	3,594	246,495
Q2	..	15,465	4,738	..	14,457	4,862	..	3,801	3,484	..
Q3	..	13,811	3,843	..	13,841	5,511	3,851	2,749	1,816	..
Q4	..	11,760	4,052	..	11,760	3,615	..	2,749	2,253	..
2009 Q1	..	7,370	2,128	5,315	7,688	2,724	..	2,431	1,658	148,722
Q2	5,084	9,124	2,046	5,328	9,319	3,385	4,142	2,236	318	169,661
Q3	5,503	8,263	2,046	6,534	8,267	2,163	3,111	2,232	201	154,862
Q4	4,687	9,002	2,930	5,378	9,048	2,365	2,420	2,186	766	142,101
2010 Q1	..	6,772	6,662	2,296	..	88,805
Q2	..	7,517	7,388	..	2,049	3,284	683	175,098
Q3	..	7,335	7,184	..	1,326	3,332	281	159,574
Q4	4,907	6,377	..	4,909	6,121	3,063	..	158,634
2011 Q1	4,736	6,516	3,314	4,449	6,504	3,399	..	3,029	..	198,547
Q2	4,677	8,167	3,370	4,630	8,187	3,094	2,012	3,009	472	216,524
Q3	..	9,851	9,732	3,128	..	139,359
Q4	..	6,131	6,014	3,245	..	107,573
2012 Q1	..	9,247	8,829	2,646	..	131,311
Q2	..	8,216	9,677	1,154	..	169,805
Q3 (R)	..	9,246	8,908	1,710	..	148,099

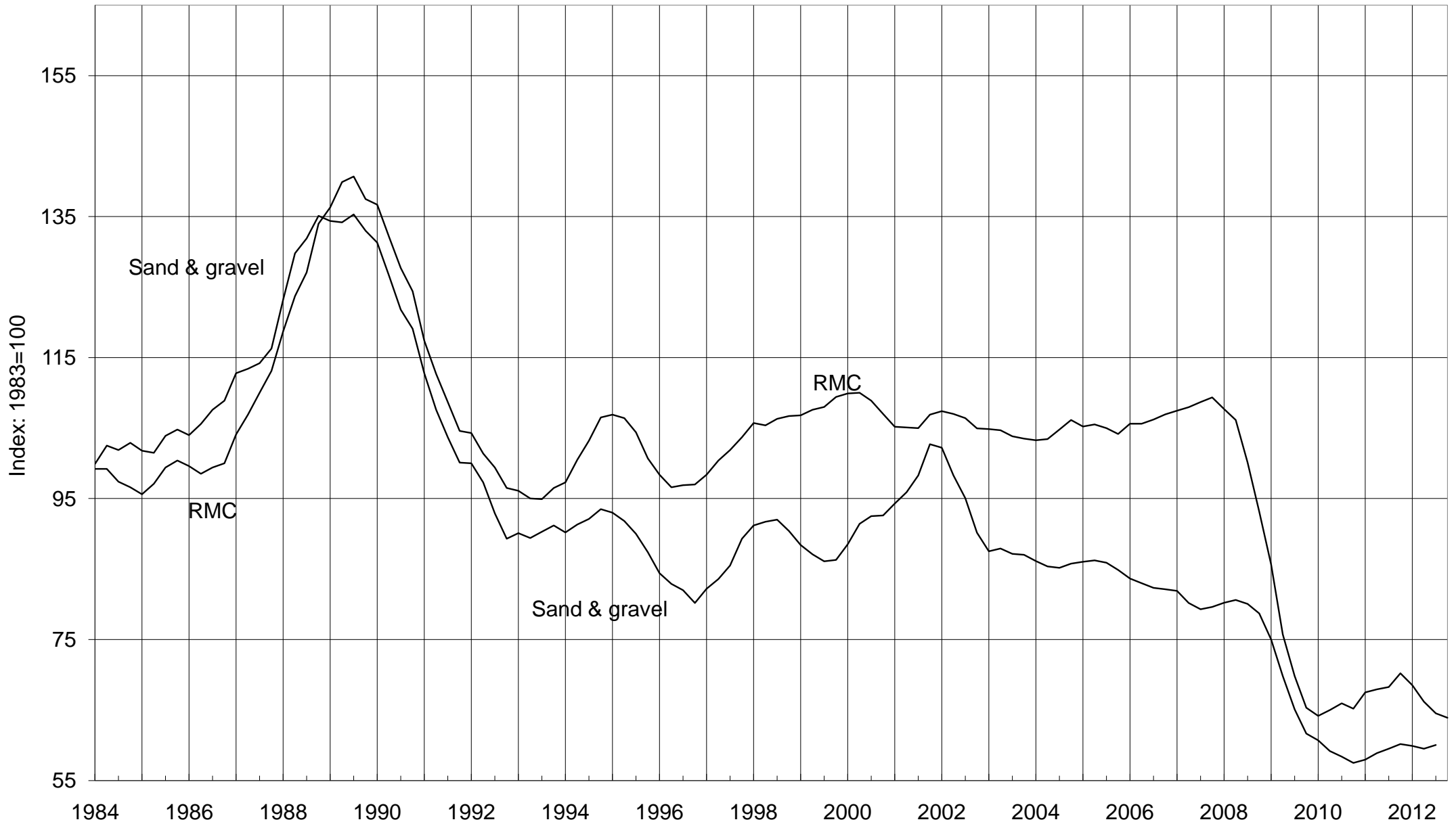
Note : 1) We have improved our sampling panel to include some new sites and have removed some non-pure slate sites. In line with the Code of Practice we have revised the data for Q2, Q3 and Q4 2010.

2) From Q1 1995, the coverage of 'powder & granules' has been extended to include non-quarry manufacture; and 'crude blocks' are included in 'other' manufacture slate.

- (a) Refers to stocks at the end of the period.
- (b) Consists of all slate tiles which could be used as roofing tiles.
- (c) Consists of all slate products for cladding and decorative uses

Deliveries of Sand & Gravel and RMC

4-quarter moving average



The data is taken from Tables 4 & 13

Table 8 : Cement & Clinker - Production, Deliveries and Stocks

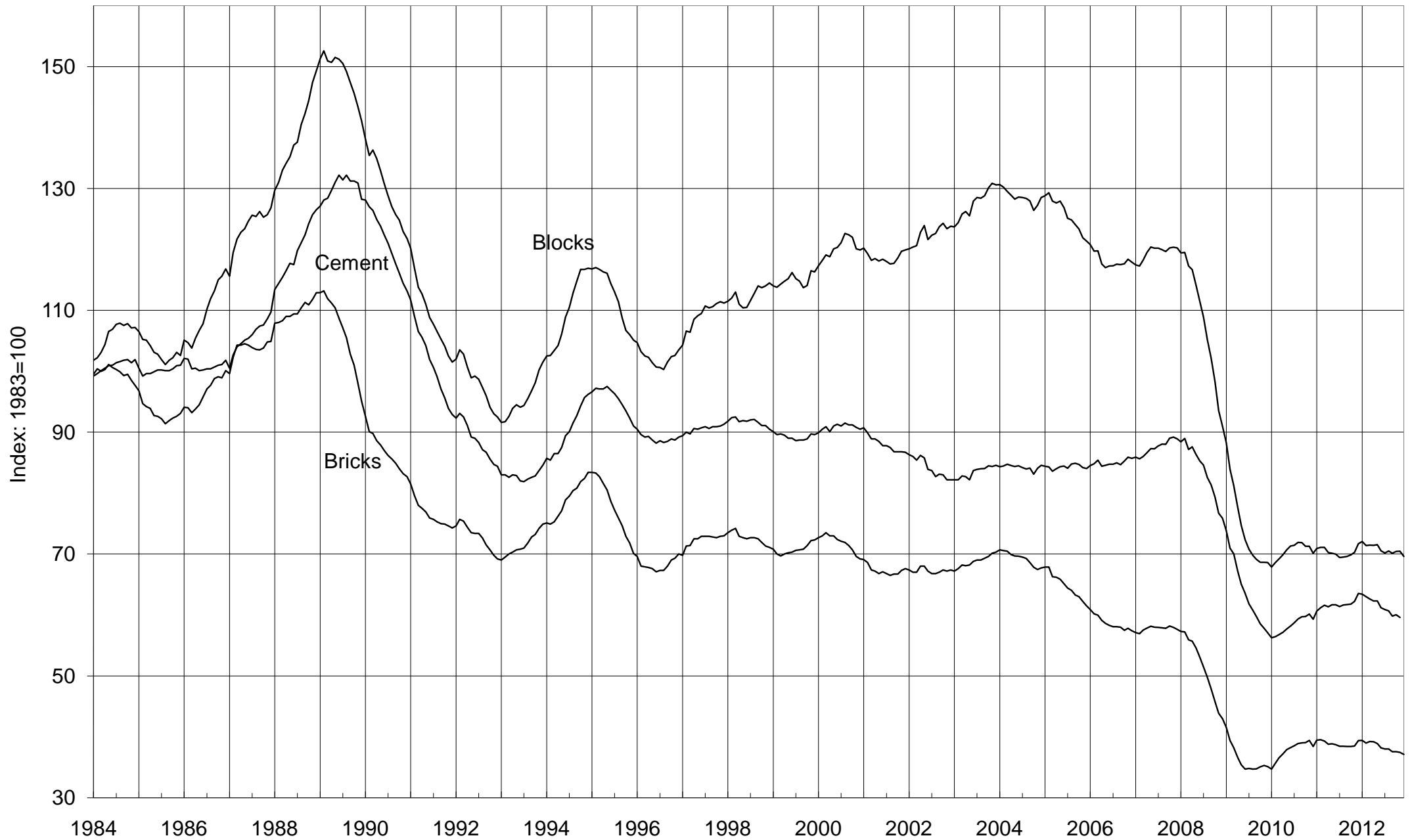
Great Britain		Thousand tonnes							
Cement								Clinker	
Production		Exports	Deliveries	Imports (into GB)		Cementitious Material		Production	
of which		(from GB)	(into GB from GB production)	by	by	other	total		
				'Manuf.	Others**				
2006		11,469	127	11,221	124	1,089	2,648	15,082	10,069
2007		11,887	74	11,638	255	1,121	2,769	15,783	10,227
2008		10,071	61	9,937	283	1,084	2,432	13,660	8,700
2009		7,623	21	7,474	99	1,085	1,680	10,338	6,421
2010		7,883	0	7,767	61	1,153	1,535	10,515	6,598
2011		8,529	0	8,318	86	1,173	1,736	11,312	7,096
2006	Q4	2,851	35	2,672	24	249	623	3,568	2,666
2007	Q1	2,678	27	2,779	43	271	643	3,735	2,021
	Q2	3,188	22	3,061	59	297	701	4,117	2,812
	Q3	3,130	9	3,011	84	294	746	4,135	2,751
	Q4	2,891	16	2,787	69	259	681	3,796	2,643
2008	Q1	2,609	18	2,551	88	268	598	3,505	2,267
	Q2	2,803	18	2,816	94	327	682	3,917	2,366
	Q3	2,520	13	2,496	72	263	648	3,445	2,202
	Q4	2,139	12	2,074	29	226	505	2,793	1,865
2009	Q1	1,762	14	1,782	37	256	410	2,485	1,378
	Q2	2,004	1	1,970	21	279	451	2,721	1,587
	Q3	1,998	5	1,999	25	283	453	2,760	1,831
	Q4	1,859	1	1,723	17	268	366	2,373	1,624
2010	Q1	1,726	0	1,744	24	246	336	2,350	1,261
	Q2	2,157	0	2,154	8	345	416	2,923	1,745
	Q3	2,203	0	2,195	17	310	450	2,971	1,880
	Q4	1,796	0	1,674	12	252	332	2,270	1,713
2011	Q1	1,979	0	2,043	12	281	402	2,738	1,427
	Q2	2,245	0	2,165	25	319	448	2,956	1,791
	Q3	2,246	0	2,200	25	303	494	3,022	2,015
	Q4	2,059	0	1,909	24	270	392	2,595	1,863
2012	Q1	1,880	0	1,928	16	285	370	2,599	1,366
	Q2	2,073	0	1,974	13	285	390	2,662	1,736
	Q3	2,120	0	2,021	13	305	446	2,785	1,722
2011	Nov	720	0	722	8	615
	Dec	574	0	478	8	627
2012	Jan	513	0	558	4	320
	Feb	602	0	612	4	384
	Mar	765	0	757	8	661
	Apr	678	0	610	4	579
	May	726	0	741	4	563
	Jun	668	0	622	4	594
	Jul	736	0	692	4	630
	Aug	682	0	687	4	547
	Sep	701	0	642	4	545
	Oct	691	0	737	4	566
	Nov	674	0	668	8	536

NB Where the coverage is for Great Britain, the figures for imports & exports are defined accordingly and have been estimated.

Cementitious material covers cement itself, fly ash to EN 450 Part 1 where used as part of the cement in concrete (previously known as pulverised fuel ash (pfa) to BS 3892 Part 1) and ground granulated blast furnace slag (ggbs) to EN 15167 Part 1 (previously BS 6699) * Refers to stocks at end of period ** Estimated

Deliveries of Bricks, Blocks & Cement

12-month moving totals



The data is taken from tables 8, 9 and 11. See footnotes on table 11 concerning data from December 2011 to June 2012.

BRICKS

Table 9 : Bricks - Production, Deliveries and Stocks

Great Britain

		Production	Deliveries (from)	Stocks*	Production	Deliveries (from)	Stocks*
(a) Brick Type		All Types			Commons		
2008		1,929	1,796	1,105	246	242	151
2009		1,257	1,469	887	185	224	108
2010		1,430	1,606	702	182	194	94
2011		1,554	1,646	610	172	185	82
2012		1,460	1,552	515	138	167	52
2011	Q4	360	365	610	38	41	82
2012	Q1	370	391	588	32	45	68
	Q2	408	397	599	35	41	62
	Q3	370	418	552	37	45	54
	Q4 (P)	312	346	515	34	36	52
2011	December	76	86	610	8	9	82
2012	January	106	110	606	11	12	80
	February	127	111	622	11	11	80
	March	136	170	588	10	22	68
	April	129	131	586	12	14	66
	May	144	142	589	12	15	63
	June	134	124	599	11	12	62
	July	126	140	586	12	16	58
	August	115	146	555	11	15	55
	September	129	132	552	14	15	54
	October	132	141	542	13	14	53
	November	116	132	523	12	13	52
	December (P)	65	73	515	9	9	52
(b) Material Type		All Materials			Clay#		
2008		1,929	1,796	1,105	1,814	1,676	1,093
2009		1,257	1,469	887
2010		1,430	1,606	702
2011		1,554	1,646	610
2012		1,460	1,552	515
2011	Q4	360	365	610
2012	Q1	370	391	588
	Q2	408	397	599
	Q3	370	418	552
	Q4 (P)	312	346	515
2011	December	76	86	610
2012	January	106	110	606
	February	127	111	622
	March	136	170	588
	April	129	131	586
	May	144	142	589
	June	134	124	599
	July	126	140	586
	August	115	146	555
	September	129	132	552
	October	132	141	542
	November	116	132	523
	December (P)	65	73	515

* Refers to stocks at end of period

#Sand-lime bricks are included with clay bricks

Millions

Production	Deliveries (from)	Stocks*	Production	Deliveries (from)	Stocks*	(a) Brick Type	
Facings			Engineering				
1,514	1,386	895	170	168	58	2008	
973	1,135	732	99	109	48	2009	
1,124	1,280	570	124	132	39	2010	
1,230	1,304	494	152	157	34	2011	
1,172	1,239	425	150	146	38	2012	
288	291	494	34	33	34	2011 Q4	
298	310	483	40	36	38	2012 Q1	
334	320	497	39	37	40	Q2	
292	332	457	41	41	40	Q3	
248	277	425	30	33	38	Q4 (P)	
62	69	494	6	8	34	2011 December	
82	89	488	13	9	38	2012 January	
103	88	503	13	12	39	February	
113	133	483	14	15	38	March	
108	105	486	10	12	35	April	
119	114	490	14	13	37	May	
107	100	497	15	12	40	June	
101	111	487	13	13	40	July	
90	117	461	13	15	39	August	
101	105	457	14	13	40	September	
105	114	448	13	13	41	October	
92	105	432	12	13	40	November	
51	58	425	5	7	38	December (P)	
Sand-Lime#			Concrete			(b) Material Type	
..	115	120	11	2008	
..	2009	
..	2010	
..	2011	
..	2012	
..	2011 Q4	
..	2012 Q1	
..	Q2	
..	Q3	
..	Q4 (P)	
..	2011 December	
..	2012 January	
..	February	
..	March	
..	April	
..	May	
..	June	
..	July	
..	August	
..	September	
..	October	
..	November	
..	December (P)	

Note: Data covering January 2009 to February 2011 were revised in the December 2011 edition of this bulletin. These data are included in this table. For more information on revisions, see the *Pre-announcements and Summary of Revisions to 'Monthly Statistics of Building Materials and Components' Publication* document on our website.

BRICKS

Table 10 : Brick Production, Deliveries and Stocks by English region, Wales and Scotland

	North East	Yorks & Humber	North West	West Midlands	East Midlands	East of England
				#		#
(a) Commons						
Production						
2011	45,755	..
Q4	1,463	..	9,807	..
2012 Q1	1,688	2,655	11,228	..
Q2	2,592	9,452	..
Q3	..	631	..	2,599	10,654	..
2012 November	..	164	305	989	3,564	..
Deliveries (from)						
2011	..	3,751	8,748	..	45,046	..
Q4	..	769	1,469	3,324	10,254	..
2012 Q1	1,660	3,274	10,680	..
Q2	1,466	2,954	10,501	..
Q3	..	738	1,949	2,777	12,201	..
2012 November	..	107	506	909	3,693	..
Stocks *						
2011	3,157	1,617	3,734	5,180	14,090	..
Q4	3,157	1,617	3,734	5,180	14,090	..
2012 Q1	..	1,181	3,762	4,561	14,630	..
Q2	3,818	1,227	4,074	4,199	13,546	..
Q3	4,155	1,120	3,877	4,021	11,965	..
2012 November	3,235	1,243	3,877	3,995	11,344	..
(b) Facings						
Production						
2011	..	69,886	..	293,282	322,710	..
Q4	..	17,037	..	72,134	68,760	..
2012 Q1	..	17,283	..	84,550	78,853	..
Q2	..	16,062	18,875	96,418	89,136	..
Q3	..	17,805	12,493	71,525	88,946	..
2012 November	..	5,578	4,946	14,591	32,009	..
Deliveries (from)						
2011	..	73,581	81,200	300,877	345,549	..
Q4	..	13,796	16,335	65,219	83,359	..
2012 Q1	..	17,083	17,294	70,577	86,241	..
Q2	..	18,966	16,565	75,506	92,062	..
Q3	..	17,491	19,532	79,399	100,067	..
2012 November	..	5,399	7,108	23,486	33,693	..
Stocks *						
2011	..	20,542	37,334	96,678
Q4	..	20,542	37,334	96,678
2012 Q1	..	20,704	37,854	110,651
Q2	..	17,800	40,164	131,563
Q3	..	18,114	33,125	123,689
2012 November	..	18,566	30,995	113,952	117,075	..
(c) Engineering #						
Production						
2011	95,916
Q4	22,313
2012 Q1	23,278
Q2	22,511
Q3	24,005	0	..
2012 November	7,032
Deliveries (from)						
2011	21,118	95,673
Q4	3,341	19,548
2012 Q1	19,516
Q2	19,033
Q3	22,152
2012 November	2,037	7,127
Stocks *						
2011	3,957	10,453
Q4	3,957	10,453
2012 Q1	3,711	14,215
Q2	4,261	17,693
Q3	4,833	19,546
2012 November	4,183	19,626

Note : Regions now use Government Office boundaries

* Refers to stocks at end of period.

South East	South West	England	Wales	Scotland	Great Britain	
#	#					
..	172,431	(a) Commons
..	37,996	Production
..	31,615	2011
..	34,660	Q4
..	37,140	2012 Q1
..	12,041	Q2
..	Q3
..	2012 November
..	184,807	Deliveries (from)
..	40,734	2011
..	45,219	Q4
..	40,587	2012 Q1
..	45,120	Q2
..	13,226	Q3
..	2012 November
..	1,345	81,597	Stocks *
..	1,345	81,597	2011
..	1,781	67,985	Q4
..	1,738	62,023	2012 Q1
..	1,393	54,009	Q2
..	1,148	51,657	Q3
..	2012 November
..	1,229,534	(b) Facings
50,318	287,766	Production
52,004	298,422	2011
55,955	333,777	Q4
52,403	292,483	2012 Q1
19,642	91,576	Q2
..	Q3
..	2012 November
239,115	1,304,050	Deliveries (from)
55,660	290,804	2011
52,890	309,869	Q4
55,365	319,528	2012 Q1
52,476	332,103	Q2
16,410	105,316	Q3
..	2012 November
53,299	494,279	Stocks *
53,299	494,279	2011
52,413	482,774	Q4
..	497,023	2012 Q1
..	457,403	Q2
..	431,608	Q3
..	2012 November
..	152,305	(c) Engineering #
..	34,307	Production
..	39,845	2011
..	39,309	Q4
..	40,812	2012 Q1
0	12,257	Q2
..	Q3
..	2012 November
..	156,873	Deliveries (from)
..	33,087	2011
..	36,184	Q4
..	36,772	2012 Q1
..	40,790	Q2
..	13,100	Q3
..	2012 November
..	34,063	Stocks *
..	34,063	2011
..	37,724	Q4
..	40,261	2012 Q1
..	40,283	Q2
..	39,950	Q3
..	2012 November

Note: Data covering January 2009 to February 2011 were revised in the December 2011 edition of this bulletin. These data are included in this table. For more information on revisions, see the *Summary of Revisions to Monthly Statistics of Building Materials and Components' Publication* document on our website.

BRICKS

Table 10 (cont'd) : Brick Production, Deliveries and Stocks by English region, Wales and Scotland

	North East	Yorks & Humber	North West	West Midlands	East Midlands	East of England
(d) All Bricks						
Production						
2010
2011
2011 Q3
Q4
2012 Q1	109,511
Q2	119,896
Q3	96,878	99,600	..
2011 November	31,026	..
December	20,101	..
2012 January	29,794	23,768	..
February	37,656
March	42,061	34,777	..
April	38,601	32,273	..
May	41,689
June	39,606	31,855	..
July	33,519	32,449	..
August	30,792	34,557	..
September	32,567	32,594	..
October	33,862	32,976	..
November	21,717
Deliveries (from)						
2010
2011	111,066
2011 Q3	29,785	108,643
Q4	21,145	87,173
2012 Q1	92,325
Q2	96,286
Q3	102,599
2011 November	8,214	31,853
December	5,009	20,825
2012 January	6,588	26,769
February	7,370	26,839
March	38,717
April	31,272
May	35,360
June	29,654
July	32,676
August	37,101
September	32,822
October	34,391
November	9,651	30,906
Stocks *						
2010	53,085	124,662
2011	45,025	111,327
2011 Q3	43,706	102,855
Q4	45,025	111,327
2012 Q1	45,327	128,513
Q2	48,499	152,123
Q3	41,835	146,402
2011 November	47,037	113,999
December	45,025	111,327
2012 January	43,883	114,352
February	46,123	125,169
March	45,327	128,513
April	45,206	135,842
May	46,699	142,171
June	48,499	152,123
July	46,228	152,966
August	41,395	146,657
September	41,835	146,402
October	41,598	145,873
November	39,055	136,684

Note : Regions now use Government Office boundaries

* Refers to stocks at end of period.

BRICKS

Thousands

South East	South West	England	Wales	Scotland	Great Britain	
						(d) All Bricks
						Production
..	1,429,605	2010
..	1,554,270	2011
..	393,697	2011 Q3
..	360,069	Q4
..	369,882	2012 Q1
..	407,746	Q2
..	370,435	Q3
..	139,534	2011 November
..	76,369	December
..	106,407	2012 January
..	127,161	February
..	136,314	March
..	129,256	April
..	144,472	May
..	134,018	June
..	126,474	July
..	114,914	August
..	129,047	September
..	131,559	October
..	115,874	November
						Deliveries (from)
..	1,605,991	2010
..	1,645,730	2011
..	444,203	2011 Q3
..	364,625	Q4
..	391,272	2012 Q1
..	396,887	Q2
..	418,013	Q3
..	136,372	2011 November
..	86,260	December
..	110,447	2012 January
..	110,539	February
..	170,286	March
..	131,332	April
..	141,852	May
..	123,703	June
..	139,759	July
..	146,186	August
..	132,068	September
..	141,460	October
..	131,642	November
						Stocks *
..	702,073	2010
..	609,939	2011
..	615,098	2011 Q3
..	609,939	Q4
..	588,483	2012 Q1
..	599,307	Q2
..	551,695	Q3
..	620,620	2011 November
..	609,939	December
..	605,861	2012 January
..	622,463	February
..	588,483	March
..	586,397	April
..	589,008	May
..	599,307	June
..	586,007	July
..	554,722	August
..	551,695	September
..	541,783	October
..	523,215	November

Note: Data covering January 2009 to February 2011 were revised in the December 2011 edition of this bulletin. These data are included in this table. For more information on revisions, see the *Summary of Revisions to 'Monthly Statistics of Building Materials and Components' Publication* document on our website.

CONCRETE PRODUCTS

Table 11 : Concrete Blocks - Production, Deliveries and Stocks

Great Britain

	All Types			Dense		
	Production	Deliveries (from)	Stocks*	Production	Deliveries (from)	Stocks*
2001	87,922	88,509	8,842	36,598	36,518	4,258
2002	91,474	91,342	9,014	35,744	36,019	3,963
2003	95,675	96,383	8,513	36,775	37,175	3,684
2004	96,256	94,854	10,088	37,677	37,444	3,690
2005	89,997	89,551	9,680	36,188	36,473	3,465
2006	87,510	87,015	..	34,956	34,741	..
2007	89,951	88,746	..	36,686	35,396	..
2008	67,743	67,136	8,920	29,675	29,889	3,498
2009	50,394	50,639	8,320	22,607	22,748	3,291
2010	53,629	51,758	10,152	22,393	21,731	3,833
2011	54,583	52,901	10,810	22,940	22,101	4,486
2007 Q3	23,248	23,184	..	9,727	9,283	..
Q4	22,157	20,472	..	8,978	8,442	..
2008 Q1	21,131	18,855	11,749	8,564	7,853	5,075
Q2	20,231	19,714	11,977	8,767	8,677	5,107
Q3	14,894	16,309	10,224	7,131	7,576	4,479
Q4	11,487	12,259	8,920	5,214	5,783	3,498
2009 Q1	12,094	11,649	9,161	5,635	5,438	3,628
Q2	13,463	13,191	9,455	6,192	6,032	3,821
Q3	12,771	13,924	8,203	5,811	6,255	3,390
Q4	12,066	11,874	8,320	4,969	5,023	3,291
2010 Q1	12,614	12,072	8,740	5,033	4,896	3,333
Q2	14,956	14,753	8,990	6,343	6,176	3,513
Q3	15,172	14,343	9,832	6,477	6,125	3,837
Q4	10,887	10,590	10,152	4,541	4,534	3,833
2011 Q1	13,982	12,795	11,516	5,642	5,278	4,197
Q2	14,761	13,911	12,510	6,217	5,871	4,647
Q3	14,208	14,076	12,352	6,217	5,931	4,862
Q4	11,632	12,120	10,810	4,864	5,021	4,486
2012 Q1	13,323	12,642	11,493	5,374	5,426	4,456
Q2	13,268	13,235	11,595	5,535	5,824	4,209
Q3	12,558	13,766	10,464	5,347	5,757	3,766
2010 December	2,593	2,126	10,152	1,207	1,001	3,833
2011 January	3,924	3,591	..	1,657	1,539	..
February	4,664	4,220	..	1,853	1,694	..
March	5,394	4,984	11,516	2,133	2,045	4,197
April	4,415	4,308	..	1,867	1,811	..
May	5,037	4,690	..	2,119	2,019	..
June	5,309	4,912	12,510	2,231	2,041	4,647
July	4,805	4,574	..	2,088	1,935	..
August	4,413	4,675	..	2,073	1,987	..
September	4,990	4,826	12,352	2,056	2,009	4,862
October	4,515	4,582	..	1,863	1,904	..
November	4,244	4,375	..	1,776	1,795	..
December	2,873	3,163	10,810	1,225	1,322	4,486
2012 January	4,229	3,870	..	1,707	1,639	..
February	4,339	3,719	..	1,843	1,653	..
March	4,754	5,053	11,493	1,824	2,133	4,456
April	4,167	4,281	..	1,746	1,874	..
May	4,842	4,756	..	2,014	2,154	..
June	4,258	4,199	11,595	1,775	1,797	4,209
July	4,305	4,276	..	1,823	1,934	..
August	3,918	4,920	..	1,746	1,965	..
September	4,335	4,570	10,464	1,778	1,858	3,766
October (P)	4,781	4,788	..	1,934	1,899	..
November (P)	4,787	4,403	..	1,858	1,718	..
December (P)	2,814	2,550	..	1,047	1,005	..

* Refers to stocks at end of period

Missing returns for provisional data (P) have been estimated using an improved methodology. See the 'pre-announcement of any major changes to samples or methodology' at: <https://www.gov.uk/government/organisations/department-for-business-innovation-skills/series/building-materials-and-components-monthly-statistics-2012>

CONCRETE PRODUCTS

Thousand square metres

Lightweight			Aerated			
Production	Deliveries (from)	Stocks*	Production	Deliveries (from)	Stocks*	
22,684	22,670	2,207	28,639	29,320	2,377	2001
23,478	23,537	2,188	32,252	31,786	2,863	2002
24,991	25,161	2,107	33,909	34,047	2,721	2003
25,462	25,736	2,271	33,117	31,674	4,127	2004
25,561	25,673	2,173	28,248	27,405	4,042	2005
25,345	25,222	..	27,209	27,051	..	2006
25,965	25,667	..	27,300	27,682	..	2007
18,168	18,363	2,149	19,900	18,884	3,273	2008
13,421	13,989	1,522	14,367	13,903	3,507	2009
14,415	13,923	2,044	16,822	16,104	4,276	2010
15,153	14,821	1,728	16,490	15,978	4,596	2011
6,757	6,616	..	6,764	7,286	..	2007 Q3
6,217	5,748	..	6,962	6,282	..	Q4
5,580	5,389	2,633	6,988	5,612	4,041	2008 Q1
5,421	5,405	2,549	6,043	5,632	4,321	Q2
4,110	4,309	2,338	3,653	4,424	3,406	Q3
3,057	3,260	2,149	3,216	3,216	3,273	Q4
3,213	3,258	2,181	3,247	2,953	3,352	2009 Q1
3,498	3,553	2,125	3,773	3,607	3,510	Q2
3,293	3,765	1,544	3,667	3,903	3,269	Q3
3,416	3,412	1,522	3,681	3,439	3,507	Q4
3,344	3,252	1,601	4,238	3,924	3,806	2010 Q1
4,031	3,950	1,692	4,582	4,627	3,785	Q2
4,208	3,899	2,023	4,487	4,319	3,971	Q3
2,832	2,822	2,044	3,515	3,234	4,276	Q4
3,916	3,665	2,301	4,423	3,852	5,017	2011 Q1
4,008	3,827	2,507	4,537	4,212	5,357	Q2
3,908	3,970	2,218	4,083	4,175	5,272	Q3
3,321	3,359	1,728	3,447	3,739	4,596	Q4
3,559	3,314	1,964	4,389	3,903	5,074	2012 Q1
3,487	3,437	2,006	4,245	3,973	5,380	Q2
3,744	3,874	1,904	3,467	4,135	4,794	Q3
553	498	2,044	834	627	4,276	2010 December
939	1,021	..	1,328	1,031	..	2011 January
1,346	1,196	..	1,466	1,330	..	February
1,632	1,448	2,301	1,629	1,491	5,017	March
1,188	1,201	..	1,361	1,296	..	April
1,401	1,316	..	1,517	1,355	..	May
1,420	1,311	2,507	1,658	1,561	5,357	June
1,335	1,291	..	1,383	1,348	..	July
1,306	1,327	..	1,034	1,361	..	August
1,267	1,352	2,218	1,666	1,466	5,272	September
1,166	1,265	..	1,487	1,414	..	October
1,386	1,271	..	1,082	1,308	..	November
769	823	1,728	878	1,017	4,596	December
1,165	990	..	1,357	1,241	..	2012 January
1,112	998	..	1,384	1,068	..	February
1,281	1,326	1,964	1,648	1,594	5,074	March
1,106	1,100	..	1,315	1,307	..	April
1,303	1,230	..	1,525	1,371	..	May
1,078	1,107	2,006	1,405	1,295	5,380	June
1,202	1,151	..	1,280	1,191	..	July
1,333	1,425	..	839	1,530	..	August
1,209	1,297	1,904	1,348	1,414	4,794	September
1,542	1,566	..	1,306	1,323	..	October (P)
1,556	1,365	..	1,373	1,321	..	November (P)
843	673	..	925	871	..	December (P)

Data from December 2011 to June 2012 has been revised following receipt of corrected data. The period August 2007 to November 2011 may also be affected, but non-availability of a back-series of corrected data means that this period cannot be revised, and should be treated with caution. Full details are available in the 'Summary of revision to monthly statistics of building materials and components publication' document at: <https://www.gov.uk/government/organisations/department-for-business-innovation-skills/series/building-materials-and-components-monthly-statistics-2012>

CONCRETE PRODUCTS

Table 12 : Concrete Blocks : Production, Deliveries and Stocks by English Region, Wales and Scotland

	North East	Yorks & Humber	North West	West Midlands	East Midlands	East of England
(a) Dense aggregate						
Production						
2011	2,604
2011 Q3	723
Q4	74	..	482
2012 Q1	64	..	548
Q2	84	..	592
Q3	73	..	547
Deliveries (from)						
2011	408	..	2,597
2011 Q3	109	..	706
Q4	78	..	519
2012 Q1	71	..	507
Q2	74	..	607
Q3	66	..	596
Stocks *						
2011	74	294	249
2011 Q3	78	346	286
Q4	74	294	249
2012 Q1	65	308	290	..	814	..
Q2	75	369	275	..	800	..
Q3	83	246	213
(b) Other (1)						
Production						
2011	2,125
2011 Q3	531
Q4	273	..	499
2012 Q1	257	..	440
Q2	286	..	511
Q3	289	..	498
Deliveries (from)						
2011	1,172	..	2,108
2011 Q3	300	..	566
Q4	243	..	455
2012 Q1	262	..	445
Q2	288	..	505
Q3	311	..	510
Stocks *						
2011	135	1,474	162
2011 Q3	105	1,441	118
Q4	135	1,474	162
2012 Q1	118	1,385	157	..	341	..
Q2	117	1,559	164	..	538	..
Q3	92	1,376	157
(c) Total						
Production						
2011	1,582	10,645	4,729	3,848	6,075	5,607
2011 Q3	338	2,755	1,254	975	1,564	1,436
Q4	346	2,412	980	867	1,232	1,050
2012 Q1	322	2,217	988	1,120	1,713	1,584
Q2	370	2,381	1,104	1,030	1,655	1,458
Q3	362	2,335	1,045	1,042	1,497	1,001
Deliveries (from)						
2011	1,580	10,426	4,705	3,786	6,133	5,826
2011 Q3	409	2,706	1,272	1,082	1,600	1,473
Q4	321	2,431	974	793	1,383	1,254
2012 Q1	332	2,292	952	791	1,520	1,349
Q2	362	2,146	1,112	970	1,472	1,565
Q3	377	2,577	1,106	1,208	1,620	1,200
Stocks *						
2011	209	1,769	411	345	961	437
2011 Q3	183	1,787	405	665	1,112	632
Q4	209	1,769	411	345	961	437
2012 Q1	183	1,693	447	678	1,154	665
Q2	191	1,928	439	779	1,338	580
Q3	174	1,621	370	624	1,160	494

Note : Regions refer to Government Office Regions

* Refers to stocks at end of period.

CONCRETE PRODUCTS

Thousand square metres

South East	South West	England	Wales	Scotland	Great Britain	
						(a) Dense aggregate
						Production
..	6,106	..	3,312	..	22,940	2011
..	1,609	..	956	..	6,217	2011 Q3
411	1,228	..	710	..	4,864	Q4
..	1,457	4,171	801	403	5,374	2012 Q1
..	1,357	..	825	..	5,535	Q2
..	1,370	3,920	869	558	5,347	Q3
						Deliveries (from)
..	5,873	..	2,966	..	22,101	2011
..	1,522	..	848	..	5,931	2011 Q3
414	1,337	..	696	..	5,021	Q4
..	1,487	4,067	976	382	5,426	2012 Q1
..	1,409	4,160	1,132	533	5,824	Q2
..	1,441	4,240	884	634	5,757	Q3
						Stocks *
..	1,458	302	4,486	2011
137	1,549	336	4,862	2011 Q3
..	1,458	302	4,486	Q4
184	1,484	3,441	735	280	4,456	2012 Q1
..	1,428	3,477	398	334	4,209	Q2
..	1,362	3,024	375	367	3,766	Q3
						(b) Other (1)
						Production
..	1,387	..	633	..	31,643	2011
..	392	..	128	..	7,991	2011 Q3
1,720	287	..	92	..	6,768	Q4
..	315	7,818	111	20	7,948	2012 Q1
..	282	..	102	..	7,732	Q2
..	269	7,071	104	35	7,211	Q3
						Deliveries (from)
..	1,340	..	398	..	30,800	2011
..	365	..	124	..	8,145	2011 Q3
1,772	304	..	108	..	7,098	Q4
..	298	7,108	94	14	7,217	2012 Q1
..	264	7,291	106	14	7,411	Q2
..	241	7,874	104	31	8,009	Q3
						Stocks *
..	203	29	6,324	2011
3,642	228	30	7,490	2011 Q3
..	203	29	6,324	Q4
3,659	226	6,933	74	31	7,038	2012 Q1
..	232	7,284	71	31	7,386	Q2
..	253	6,582	72	45	6,698	Q3
						(c) Total
						Production
9,196	7,493	49,175	3,944	1,464	54,583	2011
2,372	2,001	12,696	1,085	427	14,208	2011 Q3
2,131	1,515	10,533	802	298	11,632	Q4
2,274	1,772	11,989	911	422	13,323	2012 Q1
2,155	1,639	11,791	928	549	13,268	Q2
2,071	1,640	10,992	973	593	12,558	Q3
						Deliveries (from)
8,489	7,213	48,158	3,364	1,378	52,901	2011
2,315	1,887	12,745	971	360	14,076	2011 Q3
2,186	1,642	10,983	804	333	12,120	Q4
2,155	1,785	11,176	1,071	396	12,642	2012 Q1
2,151	1,673	11,451	1,238	546	13,235	Q2
2,345	1,682	12,114	987	665	13,766	Q3
						Stocks *
3,724	1,661	9,516	963	331	10,810	2011
3,779	1,777	10,339	1,646	367	12,352	2011 Q3
3,724	1,661	9,516	963	331	10,810	Q4
3,842	1,711	10,373	810	311	11,493	2012 Q1
3,846	1,660	10,761	469	365	11,595	Q2
3,548	1,615	9,606	447	412	10,464	Q3

(1) Lightweight aggregate including aerated concrete blocks where appropriate.

Data from December 2011 to June 2012 has been revised following receipt of corrected data. The period August 2007 to November 2011 may also be affected, but non-availability of a back-series of corrected data means that this period cannot be revised, and should be treated with caution. Full details are available in the 'Summary of revision to monthly statistics of building materials and components publication' document on our website.

OTHER BUILDING MATERIALS

Table 13 : Other Building Materials

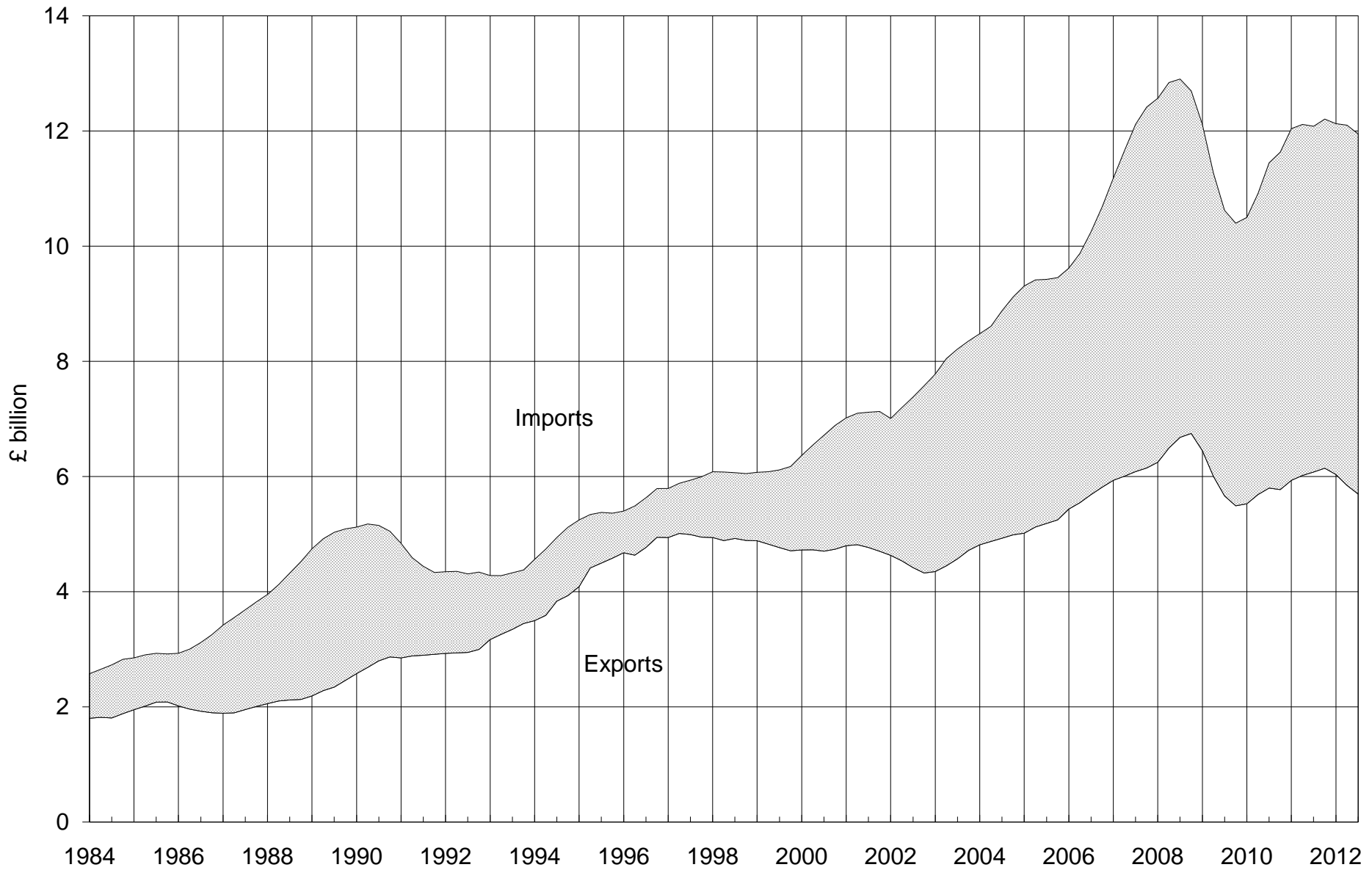
		Great Britain			United Kingdom
		Concrete Roofing Tiles (Th.sq.m. of roof area covered)			Ready-Mixed Concrete # (Th.cu.m.)
		Production	Deliveries	Stocks *	Deliveries
2002		25,023	24,390	4,586	22,597
2003		21,437	21,401	2,982	22,289
2004		20,739	19,403	2,850	22,856
2005		25,719	24,489	4,902	22,432
2006		23,730	24,118	4,426	23,029
2007		23,551	23,812	3,646	23,548
2008		20,084	19,926	3,899	20,051
2009		14,079	15,612	2,344	14,069
2010		17,817	17,146	3,023	14,038
2011		17,712	17,684	3,126	15,121
2012		12,880	12,913	0	13,758
2003	Q4	5,418	4,785	2,982	5,259
2004	Q1	5,498	4,294	3,787	5,334
	Q2	5,266	4,800	3,728	5,931
	Q3	4,920	5,134	3,048	6,038
	Q4	5,055	5,175	2,850	5,553
2005	Q1	5,787	4,779	3,732	5,137
	Q2	7,502	6,406	5,818	5,994
	Q3	6,135	7,103	4,850	5,920
	Q4	6,295	6,200	4,902	5,381
2006	Q1	6,792	6,252	5,418	5,445
	Q2	6,002	5,709	5,708	5,995
	Q3	5,448	6,371	4,688	6,047
	Q4	5,489	5,787	4,426	5,542
2007	Q1	6,618	5,629	5,368	5,554
	Q2	5,775	5,728	5,360	6,103
	Q3	5,129	6,541	3,929	6,205
	Q4	6,028	5,914	3,646	5,686
2008	Q1	5,708	5,421	3,922	5,193
	Q2	5,815	5,679	4,488	5,773
	Q3	4,657	4,977	3,840	4,902
	Q4	3,903	3,849	3,899	4,183
2009	Q1	3,664	3,281	4,273	3,583
	Q2	3,055	3,936	3,391	3,637
	Q3	3,580	4,447	2,522	3,628
	Q4	3,779	3,949	2,344	3,221
2010	Q1	4,129	3,505	2,967	3,328
	Q2	4,961	4,922	3,008	3,819
	Q3	4,783	4,824	2,967	3,831
	Q4	3,945	3,894	3,023	3,060
2011	Q1	4,820	4,079	3,858	3,827
	Q2	4,565	4,398	4,022	3,907
	Q3	4,210	4,901	3,316	3,908
	Q4	4,116	4,306	3,126	3,479
2012	Q1	4,673	3,928	3,872	3,463
	Q2	4,236	4,100	4,008	3,399
	Q3	3,971	4,885	3,093	3,556
	Q4	3,340

* Refers to stocks at the end of the period.

In April 2012, the Mineral Products Association (who provide these figures), estimated that data understates UK deliveries by around 20-25%. Previously, they had estimated that figures understate UK deliveries by 14-18%.

Comparison of Imports & Exports

4-quarter moving totals



The data is taken from Table 14

EXTERNAL TRADE

**Table 14 : Value of Overseas Trade in Selected Materials and Components
for Constructional Use : Imports (cif) & Exports (fob)**

United Kingdom		Current Prices (£'000)					
		2006	2007	2008	2009	2010	2011
All Building Materials & Components	Imports	10,680,836	12,415,890	12,697,046	10,399,489	11,632,361	12,206,507
	Exports	5,813,301	6,147,721	6,747,415	5,491,055	5,772,232	6,143,891
	Balance	(4,867,535)	(6,268,169)	(5,949,631)	(4,908,434)	(5,860,129)	(6,062,616)
All Raw Materials	Imports	180,137	213,589	228,019	158,706	174,275	200,736
	Exports	98,057	124,957	116,930	135,125	132,349	140,525
	Balance	(82,080)	(88,632)	(111,089)	(23,581)	(41,926)	(60,211)
Sand for construction	Imports	5,075	6,455	6,369	5,916	5,259	7,558
	Exports	5,770	7,769	9,373	7,967	7,398	7,783
Crushed Rock : uncoated	Imports	39,308	38,882	43,442	32,030	36,490	41,280
	Exports	65,985	71,990	77,930	76,898	73,902	78,237
Crushed Rock : coated	Imports	2,245	2,927	3,206	2,227	2,642	3,057
	Exports	2,621	3,937	3,862	3,061	2,988	4,727
Building Stone : unprocessed	Imports	95,903	115,064	124,436	93,174	99,236	107,354
	Exports	1,777	3,209	2,159	2,114	4,053	3,716
Slate : unprocessed	Imports	10,894	11,590	9,295	6,168	5,799	4,686
	Exports	309	1,579	813	1,924	844	922
Gypsum & Anhydrite	Imports	8,649	8,626	8,301	8,353	7,040	7,284
	Exports	511	493	899	768	1,148	1,035
Bituminous Shale	Imports	18,063	30,045	32,970	10,838	17,809	29,517
	Exports	21,084	35,980	21,894	42,393	42,016	44,105
All Semi-Manufactures	Imports	1,756,076	2,196,078	1,972,139	1,389,572	1,639,598	1,698,664
	Exports	618,573	644,415	648,822	426,190	480,686	486,111
	Balance	(1,137,503)	(1,551,663)	(1,323,317)	(963,382)	(1,158,912)	(1,212,553)
Clinker	Imports	40,922	60,554	35,973	18,520	17,331	19,940
	Exports	2,644	1,899	1,271	835	1,205	2,763
Sawn Wood > 6mm thick	Imports	727,916	915,900	610,292	554,187	705,638	622,813
	Exports	38,370	32,010	20,957	16,025	19,437	14,671
Densified Wood	Imports	2,782	2,332	1,767	1,452	2,301	1,942
	Exports	422	319	272	268	518	569
Particle Board	Imports	56,174	55,934	45,497	27,913	30,755	34,479
	Exports	16,357	9,377	8,920	8,382	8,875	8,044
Laminated Wood	Imports	250,615	282,912	296,969	215,021	146,691	133,222
	Exports	24,436	23,172	21,935	15,839	11,698	11,051
Fibreboard	Imports	61,429	72,499	61,614	56,511	53,901	60,031
	Exports	12,532	10,575	8,966	15,055	24,727	11,162
Steel for Fabrication	Imports	278,232	463,477	529,327	184,164	286,866	354,980
	Exports	236,427	257,126	301,366	185,537	216,815	206,955
Aluminium for Fabrication	Imports	272,983	277,251	315,948	268,155	325,157	408,816
	Exports	220,651	234,348	216,596	123,494	131,665	160,722
Profiles of Vinyl Chloride	Imports	48,747	41,560	44,169	44,827	35,911	25,099
	Exports	27,349	33,766	25,781	23,770	23,337	24,027
Slag for Construction	Imports	4,626	8,607	11,580	2,331	5,825	1,906
	Exports	1,747	1,231	1,018	921	1,112	1,280
Tar & Bituminous Mixtures	Imports	9,261	12,285	17,424	15,156	27,742	33,081
	Exports	26,008	27,895	27,680	22,781	27,613	26,921
Lime	Imports	2,389	2,767	1,579	1,335	1,480	2,355
	Exports	11,630	12,697	14,060	13,283	13,684	17,946

EXTERNAL TRADE

Current Prices (£'000)

2011 Q3	Q4	2012 Q1	Q2	Q3		
3,111,864	2,967,894	2,973,376 (R)	3,047,466 (R)	2,959,998	Imports	All Building Materials & Components
1,563,457	1,474,685	1,398,049 (R)	1,409,263 (R)	1,412,944	Exports	
(1,548,407)	(1,493,209)	(1,575,327) (R)	(1,638,203) (R)	(1,547,054)	Balance	
48,770	51,862	44,501	48,602 (R)	43,428	Imports	All Raw Materials
43,188	31,135	15,752	21,337 (R)	21,682	Exports	
(5,582)	(20,727)	(28,749)	(27,265) (R)	(21,746)	Balance	
2,077	1,626	2,126	1,623	2,602	Imports	Sand for construction
2,100	1,919	1,561	1,586 (R)	1,818	Exports	
7,072	15,776	6,865	9,697 (R)	7,067	Imports	Crushed Rock : uncoated
19,164	19,841	12,032	16,760 (R)	17,390	Exports	
795	816	666	941	1,612	Imports	Crushed Rock : coated
1,529	1,311	534	1,311	968	Exports	
27,705	24,176	28,810	32,800 (R)	28,197	Imports	Building Stone : unprocessed
817	585	390	523 (R)	438	Exports	
1,395	954	960	1,286	1,551	Imports	Slate : unprocessed
207	247	343	256	156	Exports	
1,112	1,788	1,956	2,037	1,571	Imports	Gypsum & Anhydrite
260	268	343	227	374	Exports	
8,614	6,726	3,118	218	828	Imports	Bituminous Shale
19,111	6,964	549	674 (R)	538	Exports	
435,722	384,684	427,169 (R)	464,547 (R)	390,156	Imports	All Semi-Manufactures
116,753	105,704	112,047 (R)	110,818 (R)	122,160	Exports	
(318,969)	(278,980)	(315,122) (R)	(353,729) (R)	(267,996)	Balance	
5,645	5,421	6,925	5,255	6,770	Imports	Clinker
1,426	657	649	365	495	Exports	
155,493	133,641	163,519 (R)	179,960 (R)	149,252	Imports	Sawn Wood > 6mm thick
3,789	2,747	2,833	3,444 (R)	3,097	Exports	
458	434	770	545	405	Imports	Densified Wood
164	118	149	101 (R)	153	Exports	
11,540	8,215	6,932	6,276 (R)	6,937	Imports	Particle Board
1,878	2,171	3,231	2,426 (R)	1,890	Exports	
33,591	26,778	28,077 (R)	37,329 (R)	28,230	Imports	Laminated Wood
2,969	2,355	1,972 (R)	2,293 (R)	1,464	Exports	
15,955	15,431	15,091 (R)	14,756 (R)	15,050	Imports	Fibreboard
2,845	2,748	3,453	3,354	2,613	Exports	
85,617	83,525	88,371 (R)	103,093 (R)	74,937	Imports	Steel for Fabrication
44,091	44,537	49,179	41,553 (R)	44,720	Exports	
108,063	97,195	104,262 (R)	102,475 (R)	94,305	Imports	Aluminium for Fabrication
39,281	33,286	35,314 (R)	40,602 (R)	49,977	Exports	
7,196	5,577	7,981 (R)	6,688 (R)	5,966	Imports	Profiles of Vinyl Chloride
6,125	5,126	5,779	5,311 (R)	5,953	Exports	
437	403	274	585	858	Imports	Slag for Construction
351	218	231	352	155	Exports	
11,147	7,038	4,598 (R)	7,005 (R)	7,059	Imports	Tar & Bituminous Mixtures
8,641	7,079	4,086	6,898 (R)	6,464	Exports	
580	1,026	369 (R)	580 (R)	387	Imports	Lime
5,193	4,662	5,171	4,119	5,179	Exports	

EXTERNAL TRADE

Table 14 : Value of Overseas Trade in Selected Materials and Components for Constructional Use : Imports (cif) & Exports (fob)

United Kingdom		Current Prices (£'000)					
		2006	2007	2008	2009	2010	2011
All Products & Components	Imports	8,744,623	10,006,223	10,496,888	8,851,211	9,818,488	10,307,107
	Exports	5,096,671	5,378,349	5,981,663	4,929,740	5,159,197	5,517,255
	Balance	(3,647,952)	(4,627,874)	(4,515,225)	(3,921,471)	(4,659,291)	(4,789,852)
Wood sleepers (rail & tram)	Imports	6,844	7,907	10,736	5,761	5,065	7,634
	Exports	605	905	1,074	688	717	893
Building Stone : processed	Imports	206,066	243,019	252,176	211,999	217,570	177,755
	Exports	36,148	34,465	38,557	37,466	30,751	10,603
Slate Roofing Tiles*	Imports	50,718	58,165	65,872	57,067	63,188	..
	Exports	5,479	6,941	6,559	8,552	6,286	..
Other Slate Products*	Imports	10,641	8,963	8,204	8,002	8,381	..
	Exports	2,406	2,348	1,643	1,141	1,725	..
Slate Products*	Imports	72,289
	Exports	7,413
Portland Cement	Imports	52,408	59,422	65,930	54,475	52,246	48,735
	Exports	28,179	26,525	13,271	4,897	4,178	5,481
Other Cements	Imports	24,858	24,705	31,452	47,618	50,669	61,532
	Exports	32,357	31,336	29,824	24,202	35,097	37,960
Steel Sheet Piling	Imports	55,911	71,747	78,763	48,577	61,527	51,576
	Exports	18,609	20,205	32,009	24,175	16,226	18,568
Ready-Mixed Concrete	Imports	612	686	826	711	822	36
	Exports	10,116	10,378	12,639	4,600	3,378	3,036
Concrete Reinforcing Bars	Imports	150,492	181,795	210,556	72,138	86,842	135,802
	Exports	38,587	107,236	194,136	68,087	60,252	46,970
Mortars	Imports	5,247	6,225	7,021	7,949	7,357	8,852
	Exports	5,998	5,772	6,410	5,360	3,757	8,936
Clay Bricks	Imports	29,102	35,245	25,877	18,675	19,778	22,918
	Exports	13,540	10,591	7,133	3,703	3,162	2,842
Clay Roofing Tiles	Imports	10,285	10,348	10,104	7,576	9,116	8,889
	Exports	1,680	303	276	511	589	207
Clay Pipes	Imports	600	669	313	146	225	258
	Exports	6,262	5,518	5,775	4,177	3,472	4,124
Other Clay Products	Imports	5,885	5,602	6,668	5,453	5,225	6,068
	Exports	11,123	17,502	18,852	2,851	3,188	3,566
Concrete Blocks & Bricks	Imports	4,544	11,475	8,615	4,421	4,369	7,466
	Exports	26,813	27,318	21,102	11,844	9,203	9,421
Concrete Roofing Tiles*	Imports	4,845	4,664	7,195	7,342	5,017	..
	Exports	7,857	7,013	3,844	2,402	2,949	..
Other Concrete Tiles & Paving*	Imports	14,703	16,130	18,353	15,576	13,297	..
	Exports	33,692	38,280	34,756	19,151	13,594	..
Concrete Tiles and Pavings*	Imports	19,565
	Exports	13,478
Prefabricated Concrete Products	Imports	22,439	26,763	34,841	23,582	28,811	20,514
	Exports	28,936	23,240	19,042	8,967	12,390	4,432
Concrete Pipes	Imports	27,303	32,767	36,740	40,646	45,485	61,426
	Exports	27,010	32,536	31,413	30,366	24,339	26,578

Current Prices (£'000)

2011 Q3	Q4	2012 Q1	Q2	Q3		
2,627,372	2,531,348	2,501,706 (R)	2,534,317 (R)	2,526,414	Imports	All Products & Components
1,403,516	1,337,846	1,270,250 (R)	1,277,108 (R)	1,269,102	Exports	
(1,223,856)	(1,193,502)	(1,231,456) (R)	(1,257,209) (R)	(1,257,312)	Balance	
2,073	2,012	2,429	3,526 (R)	3,508	Imports	Wood sleepers (rail & tram)
130	275	547	1,776	498	Exports	
42,685	43,568	43,854 (R)	44,986 (R)	45,235	Imports	Building Stone : processed
2,696	2,265	1,954	2,598 (R)	2,891	Exports	
..	Imports	Slate Roofing Tiles*
..	Exports	
..	Imports	Other Slate Products*
..	Exports	
19,151	17,381	16,199 (R)	18,554 (R)	18,293	Imports	Slate Products*
2,105	1,767	1,223 (R)	1,487 (R)	1,367	Exports	
12,382	12,021	12,933	10,240 (R)	11,727	Imports	Portland Cement
1,383	1,262	1,400	1,129 (R)	1,048	Exports	
16,570	13,987	11,339	11,458 (R)	10,862	Imports	Other Cements
10,978	7,922	9,434	11,436 (R)	10,006	Exports	
9,132	10,843	21,151 (R)	14,182 (R)	12,235	Imports	Steel Sheet Piling
7,005	3,545	3,378 (R)	3,438 (R)	2,877	Exports	
1	7	23	1	0	Imports	Ready-Mixed Concrete
1,036	690	572	560	673	Exports	
32,505	31,739	46,853 (R)	49,530 (R)	28,862	Imports	Concrete Reinforcing Bars
14,385	7,954	8,672	12,532	21,047	Exports	
2,392	2,010	2,564 (R)	2,358 (R)	2,732	Imports	Mortars
3,141	1,852	986	1,176	873	Exports	
6,012	5,730	6,503	6,264	6,137	Imports	Clay Bricks
750	731	789	1,129	1,252	Exports	
2,311	2,102	2,942	3,791	2,457	Imports	Clay Roofing Tiles
74	28	37	42	34	Exports	
90	25	31	493	61	Imports	Clay Pipes
1,106	908	705	921	905	Exports	
1,612	937	1,387	1,240 (R)	1,413	Imports	Other Clay Products
481	677	856	697	669	Exports	
2,293	1,676	2,075	1,979 (R)	2,261	Imports	Concrete Blocks & Bricks
2,423	2,098	2,296	1,932 (R)	1,792	Exports	
..	Imports	Concrete Roofing Tiles*
..	Exports	
..	Imports	Other Concrete Tiles & Paving*
..	Exports	
4,912	4,959	4,230 (R)	5,148 (R)	5,003	Imports	Concrete Tiles and Pavings*
3,948	2,761	2,407	3,534 (R)	3,303	Exports	
3,609	3,951	5,469 (R)	4,013 (R)	5,997	Imports	Prefabricated Concrete Products
841	801	768	587	841	Exports	
15,711	14,212	13,631	13,043 (R)	13,152	Imports	Concrete Pipes
7,710	7,374	6,455 (R)	6,098 (R)	5,652	Exports	

* Due to changes to in European Commission product classifications Slate Roofing Tiles and Other Slate Products have been combined. Similarly, Concrete Roofing Tiles and Other Concrete Tiles and Pavings have been combined.

EXTERNAL TRADE

Table 14 : Value of Overseas Trade in Selected Materials and Components for Constructional Use : Imports (cif) & Exports (fob)

United Kingdom		Current Prices (£'000)					
		2006	2007	2008	2009	2010	2011
Products & Components (continued)							
Structural Units (steel)	Imports	361,685	526,140	564,645	470,772	604,136	648,018
	Exports	445,237	498,331	604,520	505,127	486,891	472,789
Structural Units (aluminium)	Imports	149,756	220,258	251,909	292,334	178,196	235,864
	Exports	81,708	81,777	98,289	71,158	54,971	61,224
Steel Tubes & Hollow Sections	Imports	117,181	142,420	157,616	108,794	130,955	154,120
	Exports	109,871	114,756	132,537	82,990	108,503	128,588
Bituminous Roofing Felt*	Imports	21,082	25,627	30,853	35,139	39,835	..
	Exports	5,756	5,406	3,507	3,392	2,744	..
Other Asphalt products*	Imports	8,449	9,966	9,999	9,987	10,750	..
	Exports	16,756	16,768	18,030	19,595	14,474	..
Asphalt Products*	Imports	54,421
	Exports	18,070
Mineral Insulating Materials	Imports	84,002	81,851	78,961	74,096	81,060	83,477
	Exports	137,321	139,360	132,697	106,865	146,430	164,857
Glass Fibre**	Imports	2,667	1,482	1,185	552	381	602
	Exports	820	1,188	2,829	1,220	1,075	2,669
Fibre Cement Products	Imports	24,343	31,344	28,053	28,663	31,019	35,084
	Exports	6,619	6,668	7,680	4,847	5,849	9,199
Building Plasters ¹	Imports	5,726	6,172	6,868	8,845
	Exports	8,122	7,622	8,077	7,475
Plasters ¹	Imports	13,820	11,656
	Exports	7,905	9,168
Plasterboard	Imports	34,275	30,302	16,057	13,683	15,007	18,972
	Exports	24,261	19,798	18,397	16,505	12,912	12,522
Copper Pipes	Imports	212,455	217,861	245,212	182,487	241,116	228,049
	Exports	167,830	153,412	171,581	116,520	146,447	142,770
Lead Pipes & Fittings**	Imports	168	93	18	509	148	..
	Exports	204	48	626	209	243	..
Zinc Pipes & Fittings*	Imports	328	1,154	918	494	757	..
	Exports	5,446	7,166	6,016	4,388	914	..
Other Zinc Building Products*	Imports	14,481	12,447	13,117	10,409	13,000	..
	Exports	23,874	20,946	22,026	22,639	26,529	..
Zinc Building Products*	Imports	12,933
	Exports	24,595
Plastic Pipes	Imports	100,143	114,727	133,929	117,126	105,667	114,260
	Exports	187,793	205,332	211,718	202,745	149,389	156,648
Other Plastic Building Products	Imports	133,409	148,828	149,235	138,250	148,270	157,129
	Exports	100,498	115,008	117,407	96,902	110,278	129,742
Builders Ironmongery	Imports	452,336	498,373	505,665	278,144	312,316	314,993
	Exports	155,065	157,424	165,476	94,402	112,191	128,039
Nails & Screws	Imports	51,836	59,853	61,080	48,123	66,865	64,896
	Exports	15,228	12,553	12,851	8,281	8,949	11,186
Mastics, Putty	Imports	138,982	148,599	151,898	132,061	143,430	151,902
	Exports	95,347	103,998	119,256	110,080	115,349	139,748
Paints & Varnishes	Imports	315,961	339,581	356,451	345,977	376,374	403,309
	Exports	436,044	442,126	551,564	503,518	552,294	622,468

¹ From Q1 2010 onwards the Plasters category will contain Building Plaster and Other Plasters as Building Plasters data is no longer collected

EXTERNAL TRADE

Current Prices (£'000)

2011 Q3	Q4	2012 Q1	Q2	Q3	Products & Components (continued)	
171,524	139,330	57,217	75,839 (R)	113,305	Imports	Structural Units (steel)
120,479	106,007	40,915	41,106 (R)	43,187	Exports	
76,329	71,461	61,219 (R)	62,407 (R)	53,631	Imports	Structural Units (aluminium)
16,171	15,643	13,089 (R)	13,321 (R)	17,348	Exports	
35,876	33,844	44,548 (R)	44,635 (R)	39,261	Imports	Steel Tubes & Hollow Sections
33,632	27,965	31,621	30,663 (R)	23,154	Exports	
..	Imports	Bituminous Roofing Felt*
..	Exports	
..	Imports	Other Asphalt products*
..	Exports	
15,092	14,139	14,392	13,171	15,671	Imports	Asphalt Products*
4,802	5,320	5,244	3,159	3,801	Exports	
22,534	21,343	20,027 (R)	21,894 (R)	23,033	Imports	Mineral Insulating Materials
44,372	39,662	43,304 (R)	42,915 (R)	41,123	Exports	
201	139	Imports	Glass Fibre**
892	547	Exports	
9,539	8,798	9,242	8,261	9,767	Imports	Fibre Cement Products
2,692	2,312	2,210	2,338	2,311	Exports	
..	Imports	Building Plasters1
..	Exports	
3,060	2,639	3,187	3,261 (R)	2,841	Imports	Plasters1
2,289	2,082	2,316	2,305	2,259	Exports	
5,088	4,015	5,221 (R)	3,883 (R)	3,653	Imports	Plasterboard
2,989	2,837	3,220	3,132 (R)	3,378	Exports	
58,919	51,882	58,090	54,152 (R)	52,469	Imports	Copper Pipes
34,243	33,697	30,854	31,088 (R)	27,577	Exports	
..	Imports	Lead Pipes & Fittings**
..	Exports	
..	Imports	Zinc Pipes & Fittings*
..	Exports	
..	Imports	Other Zinc Building Products*
..	Exports	
2,827	3,239	3,467	3,331 (R)	4,918	Imports	Zinc Building Products*
5,121	5,692	7,515	8,095	13,129	Exports	
30,699	24,698	27,264 (R)	29,022 (R)	27,627	Imports	Plastic Pipes
39,686	37,902	37,603	48,631 (R)	44,797	Exports	
40,534	37,909	40,404 (R)	37,985 (R)	38,466	Imports	Other Plastic Building Products
35,593	29,953	28,289 (R)	25,846 (R)	25,568	Exports	
81,906	79,424	84,218 (R)	90,480 (R)	87,388	Imports	Builders Ironmongery
31,787	28,937	31,562 (R)	31,241 (R)	30,806	Exports	
17,329	15,861	17,392 (R)	14,453 (R)	14,910	Imports	Nails & Screws
3,042	2,517	2,156 (R)	1,795 (R)	1,755	Exports	
41,865	37,017	40,373	40,673 (R)	43,566	Imports	Mastics, Putty
34,896	34,282	32,571 (R)	31,694 (R)	33,211	Exports	
109,968	93,726	108,599 (R)	106,215 (R)	108,132	Imports	Paints & Varnishes
157,897	147,438	165,180 (R)	160,303 (R)	157,876	Exports	

* Due to changes to in European Commission product classifications Bituminous Roofing Felt and Other Asphalt products have been combined. Similarly, Zinc Pipes & Fittings and Other Zinc Building Products have been combined.

** Data for Lead Pipes and Fittings and Glass Fibre are no longer collected.

EXTERNAL TRADE

**Table 14 : Value of Overseas Trade in Selected Materials and Components
for Constructional Use : Imports (cif) & Exports (fob)**

United Kingdom		Current Prices (£'000)					
		2006	2007	2008	2009	2010	2011
Products & Components (continued)							
Unglazed Ceramic Tiles	Imports	54,271	64,691	71,099	62,181	56,551	63,864
	Exports	2,475	4,420	3,607	2,424	2,829	2,817
Glazed Ceramic Tiles	Imports	285,080	290,867	279,656	256,303	224,557	212,986
	Exports	21,444	20,554	17,706	15,671	15,455	18,784
Ceramic Sanitaryware	Imports	173,687	181,603	174,194	159,123	168,666	178,028
	Exports	54,231	58,229	53,471	37,635	37,883	37,259
Plastic Sanitaryware	Imports	105,586	126,472	120,004	114,695	112,513	109,817
	Exports	78,717	78,811	83,908	79,444	67,886	62,582
Metal Sanitaryware	Imports	123,203	139,820	143,118	111,737	124,666	136,536
	Exports	32,212	33,511	33,167	31,969	28,274	32,644
Flat Glass	Imports	55,901	71,800	61,061	53,819	61,048	64,992
	Exports	67,142	83,174	107,783	60,380	73,175	109,162
Other Glass Products	Imports	78,695	76,235	98,993	82,857	81,083	85,002
	Exports	31,631	37,712	40,296	34,188	33,081	32,612
Wood Veneers	Imports	40,586	38,516	39,407	26,102	31,681	36,202
	Exports	10,607	10,243	10,034	5,747	5,824	7,593
Wood Mouldings	Imports	79,513	73,907	64,579	55,648	66,802	59,139
	Exports	20,362	18,289	11,169	8,861	9,660	8,977
Wood Block Flooring	Imports	132,978	125,111	125,242	112,661	144,394	139,916
	Exports	8,448	5,465	6,136	5,746	4,535	4,540
Other Builder's Woodwork	Imports	93,869	109,023	101,242	80,645	99,394	89,758
	Exports	21,562	19,079	15,908	14,395	14,319	16,308
Windows (wood)	Imports	71,679	84,257	121,171	110,061	111,934	118,893
	Exports	9,465	12,880	10,219	10,721	7,786	9,885
Doors (wood)	Imports	191,637	205,158	209,133	184,609	217,810	202,006
	Exports	38,546	37,008	26,929	19,395	16,873	13,323
Doors & Windows (steel)	Imports	54,493	40,294	39,652	39,726	35,987	35,431
	Exports	21,231	25,824	26,300	20,643	19,222	18,996
Doors & Windows (aluminium)	Imports	68,235	65,655	63,705	64,279	72,365	70,526
	Exports	35,883	32,687	25,473	24,410	19,950	24,141
Doors & Windows (plastic)	Imports	41,045	39,459	39,377	43,885	46,337	52,738
	Exports	68,641	63,218	56,119	41,193	44,433	39,423
Cork Tiles	Imports	2,540	2,877	2,258	1,779	2,951	4,018
	Exports	2,878	1,611	1,641	1,702	1,646	2,139
Linoleum Floor Coverings	Imports	213,518	242,787	256,585	244,149	279,065	317,850
	Exports	188,215	195,735	224,522	213,628	228,832	233,662
Wallpaper	Imports	40,997	58,962	58,636	54,487	56,701	58,370
	Exports	54,868	67,165	73,506	66,782	82,940	85,873
Textile Wall Coverings	Imports	1,187	1,572	2,833	2,346	3,323	3,007
	Exports	373	598	500	357	609	688

EXTERNAL TRADE

Current Prices (£'000)

2011 Q3	Q4	2012 Q1	Q2	Q3	Products & Components (continued)	
16,596 793	15,709 665	16,394 1,001	16,494 (R) 942	15,913 1,020	Imports Exports	Unglazed Ceramic Tiles
51,627 4,337	49,270 5,242	51,782 (R) 4,013	60,631 (R) 5,132 (R)	51,862 4,278	Imports Exports	Glazed Ceramic Tiles
43,042 9,260	43,520 7,875	46,429 (R) 7,626	45,661 (R) 8,521 (R)	44,547 8,677	Imports Exports	Ceramic Sanitaryware
27,516 15,468	28,358 14,100	27,844 (R) 12,969 (R)	27,683 (R) 12,971 (R)	27,757 13,092	Imports Exports	Plastic Sanitaryware
32,730 8,033	31,706 7,562	31,166 (R) 8,348 (R)	31,706 (R) 8,709 (R)	30,344 9,810	Imports Exports	Metal Sanitaryware
17,760 32,049	16,929 31,878	15,749 28,048 (R)	16,048 19,601	17,410 15,269	Imports Exports	Flat Glass
23,529 9,186	20,626 6,982	21,294 (R) 8,194	22,262 (R) 7,818 (R)	20,610 8,818	Imports Exports	Other Glass Products
8,959 2,546	8,750 1,721	8,576 (R) 2,091	7,934 (R) 2,104	8,536 1,759	Imports Exports	Wood Veneers
13,458 2,354	11,479 1,784	15,066 2,076	16,827 2,018	13,827 2,272	Imports Exports	Wood Mouldings
35,596 914	35,612 1,359	32,888 1,178	40,770 (R) 1,138 (R)	42,535 1,272	Imports Exports	Wood Block Flooring
22,664 4,028	20,928 4,030	22,474 4,097 (R)	23,556 (R) 3,443 (R)	21,719 2,509	Imports Exports	Other Builder's Woodwork
31,038 2,701	30,829 1,959	29,607 (R) 1,730	27,356 (R) 2,026 (R)	27,199 2,420	Imports Exports	Windows (wood)
51,365 3,441	45,427 3,042	45,267 3,299 (R)	47,536 (R) 3,867 (R)	50,041 4,750	Imports Exports	Doors (wood)
9,050 4,953	8,585 5,329	9,494 4,892	10,778 5,982 (R)	8,917 5,988	Imports Exports	Doors & Windows (steel)
19,960 5,269	17,640 7,647	18,854 (R) 5,003	18,136 (R) 5,227 (R)	16,933 4,487	Imports Exports	Doors & Windows (aluminium)
14,778 8,980	12,861 9,064	13,884 7,149	16,318 (R) 7,789 (R)	14,753 7,525	Imports Exports	Doors & Windows (plastic)
776 376	797 285	731 581	754 434	650 476	Imports Exports	Cork Tiles
79,523 60,695	77,721 54,030	78,302 (R) 53,978	78,115 (R) 54,720 (R)	74,214 55,671	Imports Exports	Linoleum Floor Coverings
12,400 19,677	15,261 19,333	13,958 17,335	14,754 (R) 18,231 (R)	13,274 20,316	Imports Exports	Wallpaper
900 163	763 262	861 101	772 (R) 221	786 138	Imports Exports	Textile Wall Coverings

EXTERNAL TRADE

Table 14 : Value of Overseas Trade in Selected Materials and Components for Constructional Use : Imports (cif) & Exports (fob)

United Kingdom		Current Prices (£'000)					
		2006	2007	2008	2009	2010	2011
Products & Components (continued)							
Fitted Kitchens (assembled)	Imports	98,938	144,017	171,688	130,058	111,345	80,006
	Exports	34,260	35,322	24,163	17,307	16,122	15,729
Prefabricated Buildings (wood)	Imports	21,986	49,086	40,341	34,264	32,687	34,909
	Exports	22,603	27,807	15,170	13,234	10,546	8,391
Prefabricated Buildings (steel)	Imports	30,281	30,083	50,546	46,291	29,783	37,366
	Exports	42,881	27,464	46,140	48,512	37,158	50,070
Prefabricated Buildings (other)	Imports	67,586	73,414	74,165	44,887	34,323	29,862
	Exports	45,997	35,795	72,310	28,104	17,643	19,082
Mobile Homes	Imports	7,196	7,113	6,574	5,065	2,165	1,430
	Exports	8,574	11,291	7,250	7,750	3,666	2,427
Taps & Valves	Imports	265,657	277,804	315,427	269,199	322,207	334,356
	Exports	62,345	72,708	60,597	64,447	73,202	69,125
Pumps (circulating)	Imports	25,544	24,274	21,754	19,900	21,878	22,061
	Exports	28,407	27,131	27,964	23,603	32,078	22,154
Central Heating Boilers	Imports	473,691	493,841	547,726	566,588	554,452	572,298
	Exports	76,578	70,581	80,756	91,053	74,832	77,852
Radiators	Imports	193,948	197,513	184,218	175,518	189,792	178,677
	Exports	37,707	46,937	57,884	34,303	31,085	28,270
Water Heaters	Imports	75,237	88,897	105,755	105,711	84,627	90,676
	Exports	67,902	64,471	84,810	64,883	63,036	67,672
Space Heaters	Imports	120,029	107,581	110,403	114,047	136,729	148,616
	Exports	39,930	37,313	35,118	32,068	32,001	32,926
Fan Systems	Imports	152,830	198,750	161,772	127,327	172,161	190,441
	Exports	132,081	94,651	114,006	107,846	109,339	124,299
Air Conditioning Equipment	Imports	379,149	514,454	644,353	462,588	527,857	576,155
	Exports	201,257	231,144	268,134	240,594	270,112	262,557
Air Purifying Equipment	Imports	31,441	29,828	41,389	50,854	53,220	66,549
	Exports	114,377	120,706	138,002	102,158	148,638	183,241
Hand Driers	Imports	5,010	4,057	7,634	7,443	8,987	10,496
	Exports	1,036	1,648	1,017	1,247	1,905	1,950
Meters	Imports	25,666	24,502	24,155	24,237	28,701	44,041
	Exports	25,025	26,216	47,988	42,969	52,825	72,518
Plugs & Sockets	Imports	232,657	231,664	269,479	257,049	303,121	329,210
	Exports	169,346	148,672	153,173	137,529	182,364	214,654
Electrical Wires	Imports	1,028,495	1,303,905	1,236,486	909,830	1,213,470	1,346,886
	Exports	458,568	521,508	554,723	425,815	515,544	571,975
Electrical Insulators	Imports	37,729	30,477	34,957	29,102	30,596	26,548
	Exports	28,858	33,830	32,548	26,983	32,574	30,485
Lamps & Fittings	Imports	392,781	449,230	462,930	424,435	515,852	520,951
	Exports	195,049	221,180	236,971	223,741	216,816	266,980
Fire & Security Alarms	Imports	153,054	144,891	139,973	136,550	151,642	122,662
	Exports	150,929	154,520	182,447	238,608	208,281	173,480
Lifts & Escalators	Imports	104,250	118,401	129,307	115,017	96,973	102,832
	Exports	24,833	43,142	28,699	19,697	14,628	21,220

EXTERNAL TRADE

Current Prices (£'000)

2011 Q3	Q4	2012 Q1	Q2	Q3	Products & Components (continued)	
20,669	18,426	19,510 (R)	20,919 (R)	19,286	Imports	Fitted Kitchens (assembled)
3,696	3,974	3,660	3,069 (R)	6,929	Exports	
9,193	6,301	7,676	6,689	10,500	Imports	Prefabricated Buildings (wood)
2,128	1,898	1,897	1,764	3,177	Exports	
6,217	8,941	6,864	8,037	8,223	Imports	Prefabricated Buildings (steel)
8,131	15,989	7,766	11,446	13,888	Exports	
5,488	5,665	12,185	11,254 (R)	7,867	Imports	Prefabricated Buildings (other)
5,457	4,907	12,226	5,068	4,008	Exports	
300	240	675	922	463	Imports	Mobile Homes
726	562	1,865	2,084 (R)	2,134	Exports	
77,734	85,927	84,773 (R)	85,717 (R)	91,747	Imports	Taps & Valves
15,997	17,855	21,077	21,178 (R)	20,075	Exports	
5,525	5,699	7,137 (R)	5,641 (R)	6,573	Imports	Pumps (circulating)
3,309	7,358	3,669	2,115	3,132	Exports	
147,133	152,273	120,908 (R)	112,602	121,082	Imports	Central Heating Boilers
15,819	22,716	14,548	18,191	17,004	Exports	
39,529	44,651	45,241 (R)	41,254 (R)	41,878	Imports	Radiators
8,389	8,835	9,634	8,860	8,903	Exports	
23,324	24,130	21,411	20,557 (R)	23,227	Imports	Water Heaters
16,945	15,291	16,984 (R)	15,742 (R)	13,049	Exports	
41,716	52,480	22,573 (R)	15,401 (R)	27,775	Imports	Space Heaters
8,230	9,964	5,134 (R)	4,305	5,483	Exports	
49,009	45,658	48,087 (R)	48,299 (R)	40,583	Imports	Fan Systems
30,910	32,809	34,411 (R)	34,488 (R)	35,038	Exports	
151,664	119,306	129,195 (R)	138,829 (R)	135,130	Imports	Air Conditioning Equipment
65,643	60,006	58,038 (R)	73,500 (R)	63,972	Exports	
18,360	16,001	15,736 (R)	21,442 (R)	15,829	Imports	Air Purifying Equipment
47,412	42,903	45,053 (R)	51,096 (R)	49,814	Exports	
2,709	3,065	2,645	2,575	2,561	Imports	Hand Driers
578	493	510	292	501	Exports	
16,569	15,242	16,565	14,237 (R)	14,600	Imports	Meters
21,108	17,349	21,908 (R)	20,252	15,180	Exports	
86,739	77,852	78,914	82,636 (R)	84,928	Imports	Plugs & Sockets
55,816	49,764	54,683	53,489 (R)	54,010	Exports	
319,010	355,658	366,313 (R)	358,985 (R)	333,521	Imports	Electrical Wires
145,476	146,797	139,352 (R)	125,712 (R)	120,030	Exports	
7,384	5,435	7,708 (R)	9,374 (R)	9,166	Imports	Electrical Insulators
7,323	7,791	7,313 (R)	6,642 (R)	7,008	Exports	
133,482	135,139	139,514 (R)	140,662 (R)	153,874	Imports	Lamps & Fittings
67,031	73,689	68,027 (R)	68,890 (R)	72,200	Exports	
27,973	30,362	34,611	33,666 (R)	34,294	Imports	Fire & Security Alarms
42,638	41,768	45,218 (R)	43,250 (R)	48,196	Exports	
27,647	23,502	24,372 (R)	30,060 (R)	32,907	Imports	Lifts & Escalators
4,756	5,276	3,440	6,077	7,816	Exports	

© Crown copyright 2013

Published under licence from the Controller of Her Majesty's Stationery Office.

Applications for reproductions should be made in writing to :-

The Copyright Unit, Her Majesty's Stationery Office, St. Clements House,
2-16 Colegate, Norwich NR3 1BQ

February 2013

URN 13 / 313b

ISSN 0264-6188