



Department for
Communities and
Local Government

Count of Traveller Caravans, January 2017 England

- The total number of traveller caravans in England in January 2017 was 22,004. This is 698 more than the 21,306 reported in January 2016.
- 6,807 caravans were on authorised socially rented sites. This is a decrease of 239 since the January 2016 count of 7,046.
- The number of caravans on authorised privately funded sites was 12,276. This was 822 more than the 11,454 recorded in January 2016.
- The number of caravans on unauthorised encampments on land owned by travellers was 2,141. This is 11 above the January 2016 figure of 2,130.
- The number of caravans on unauthorised encampments on land not owned by travellers was 780. This was 104 caravans more than the January 2016 count of 676.
- Overall, the January 2017 count indicated that 87 per cent of traveller caravans in England were on authorised land and that 13 per cent were on unauthorised land. This is the same as the previous year.

Housing *Statistical Release*

25 May 2017

Introduction	2
Count of traveller caravans	3
Historic data	6
Travelling Showpeople caravans	6
Accompanying tables	7
Definitions	8
Technical notes	9
Enquires	11

Responsible Statistician:

Callum Ward

Statistical enquiries:

Phone (office hours):

0303 444 42007

Email:

housing.statistics@communities.gov.uk

Media Enquiries:

0303 444 1201

press@communities.gsi.gov.uk

Date of next publication:

Nov/Dec 2017 (provisional)

Housing

Introduction

This statistical release presents official statistics on the count of traveller caravans in England. The count is carried out to provide local data on the number and the seasonal movement of caravans.

This publication is compiled from information submitted by local authorities in England. Local authorities carry out the count of caravans on traveller sites twice a year, in January and July, providing a snapshot of the number of caravans on the day of the count. Information is collected about caravans on authorised socially rented sites, authorised privately funded sites, unauthorised developments (sites on land owned by travellers for which planning permission had not been granted) and unauthorised encampments (sites on land not owned by travellers and which do not have planning permission).

The traveller caravan count covers data on the number of caravans and traveller sites in England; it does not cover the number of occupants residing in these caravans or caravan sites.

The count takes place twice a year to reflect winter residence and summer travelling trends and changes in demands on services. Due to the strong seasonal differences between the January and July counts, all comparisons refer to year-on-year changes.

Further information is given in four accompanying live tables, which can be accessed at:

<https://www.gov.uk/government/statistics/traveller-caravan-count-january-2017>

Table 1: Number of Traveller Caravans by type of site, England

	January 2015	January 2016	January 2017	% of total caravans	Change from January 2016 to January 2017	% Change from January 2016 to January 2017
Caravans on Authorised Sites (with planning permission)	17,452	18,500	19,083	87%	583	3%
Socially Rented Caravans	6,867	7,046	6,807	31%	-239	-3%
Private Caravans	10,585	11,454	12,276	56%	822	7%
Temporary Planning Permission	815	712	575	3%	-137	-19%
Permanent Planning Permission	9,770	10,742	11,701	53%	959	9%
Caravans on Unauthorised Sites (without planning permission)	2,671	2,806	2,921	13%	115	4%
Caravans on sites on Travellers' own land	1,893	2,130	2,141	10%	11	1%
Tolerated	1,060	1,054	1,282	6%	228	22%
Not Tolerated	833	1,076	859	4%	-217	-20%
Caravans on sites not on Travellers' own land	778	676	780	4%	104	15%
Tolerated	328	264	237	1%	-27	-10%
Not Tolerated	450	412	543	2%	131	32%
Overall Total	20,123	21,306	22,004	100%	698	3%

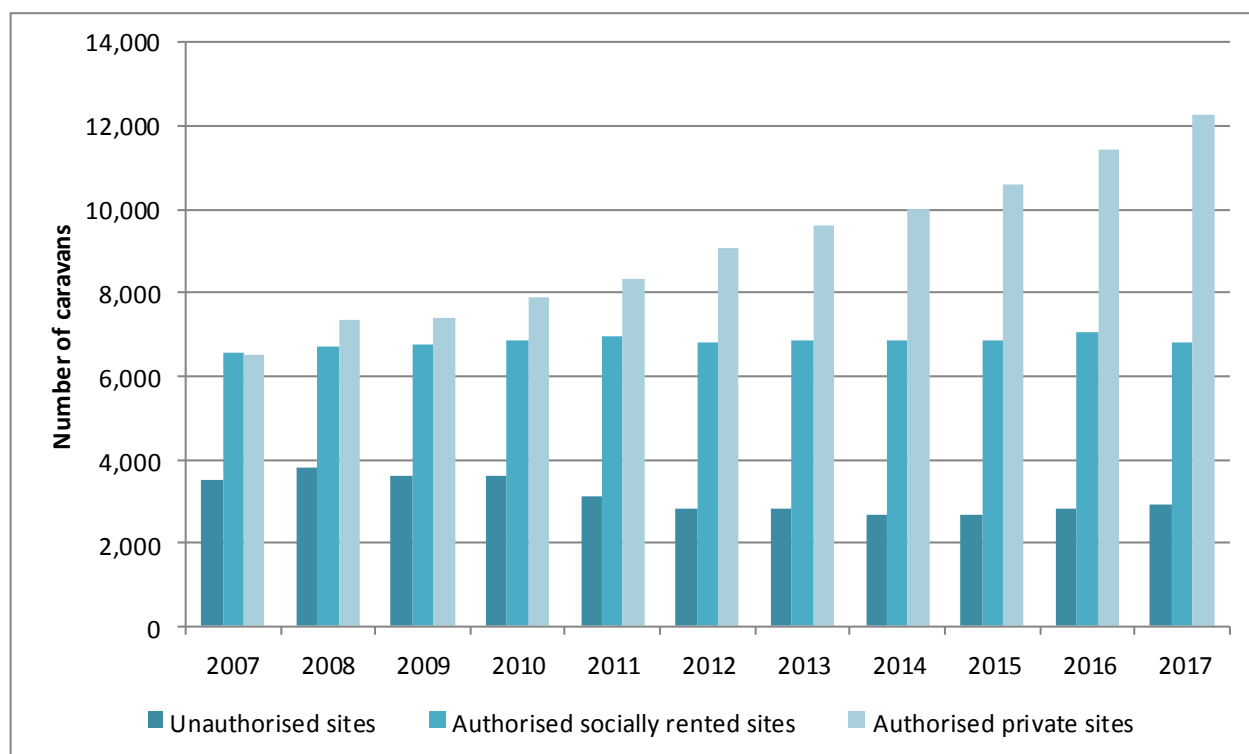
Count of Traveller Caravans

Local authorities carried out the January 2017 count on or around 12 January. Totals from the count are given in the table below, together with comparative figures from the previous two January counts.

At the time of the January 2017 count, the total number of traveller caravans in England was 22,004. Of these, 6,807 (31 per cent) were on socially rented sites; 12,276 (56 per cent) were on privately funded sites; 2,141 (10 per cent) were in unauthorised developments on land owned by travellers; and 859 (4 per cent) were in unauthorised encampments on land not owned by travellers. This information is also shown in Figure 1. Corresponding figures at local authority level for the five most recent counts are given in accompanying Live Table 1.

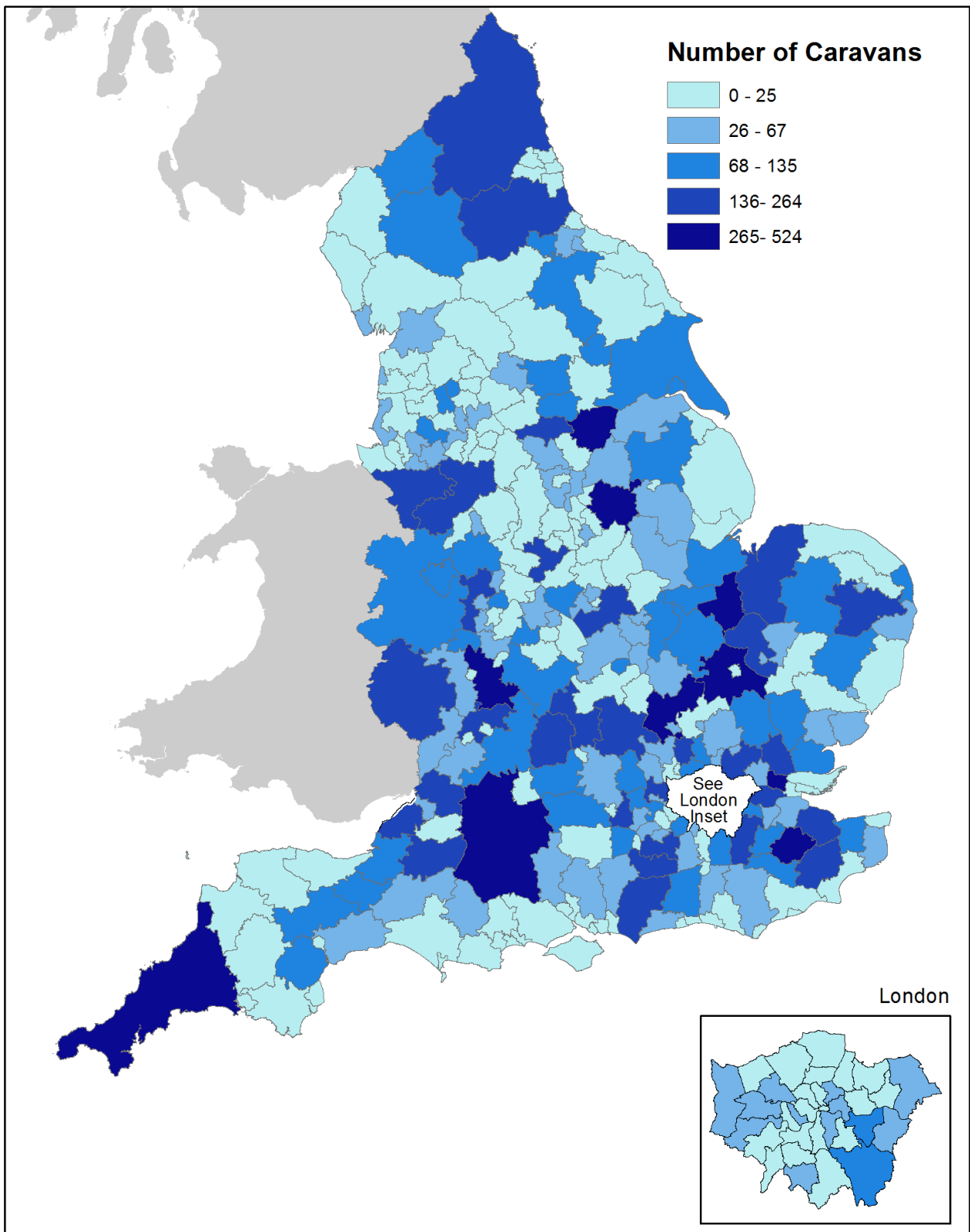
Figure 1 shows that the total number of traveller caravans in England has increased in recent years, by 32 per cent since 2007. Caravans on authorised private sites have formed a growing proportion of the total number of caravans over the last ten years, rising from 39 per cent in January 2007 to 56 per cent in the latest count. The proportion of caravans on all authorised sites has risen from 79 per cent in January 2007 to 87% in January 2017. The underlying figures are included in accompanying Live Table 4.

Figure 1: Number of Traveller Caravans by type of site, England



The map below shows the total number of caravans on authorised sites within each local authority boundary. As indicated in the key, darker colours represent those local authorities that have reported a higher number of total caravans on authorised sites. The data has been grouped into five categories for the purposes of mapping using the Jenks natural breaks classification method.

Traveller Caravans on Authorised Sites January 2017



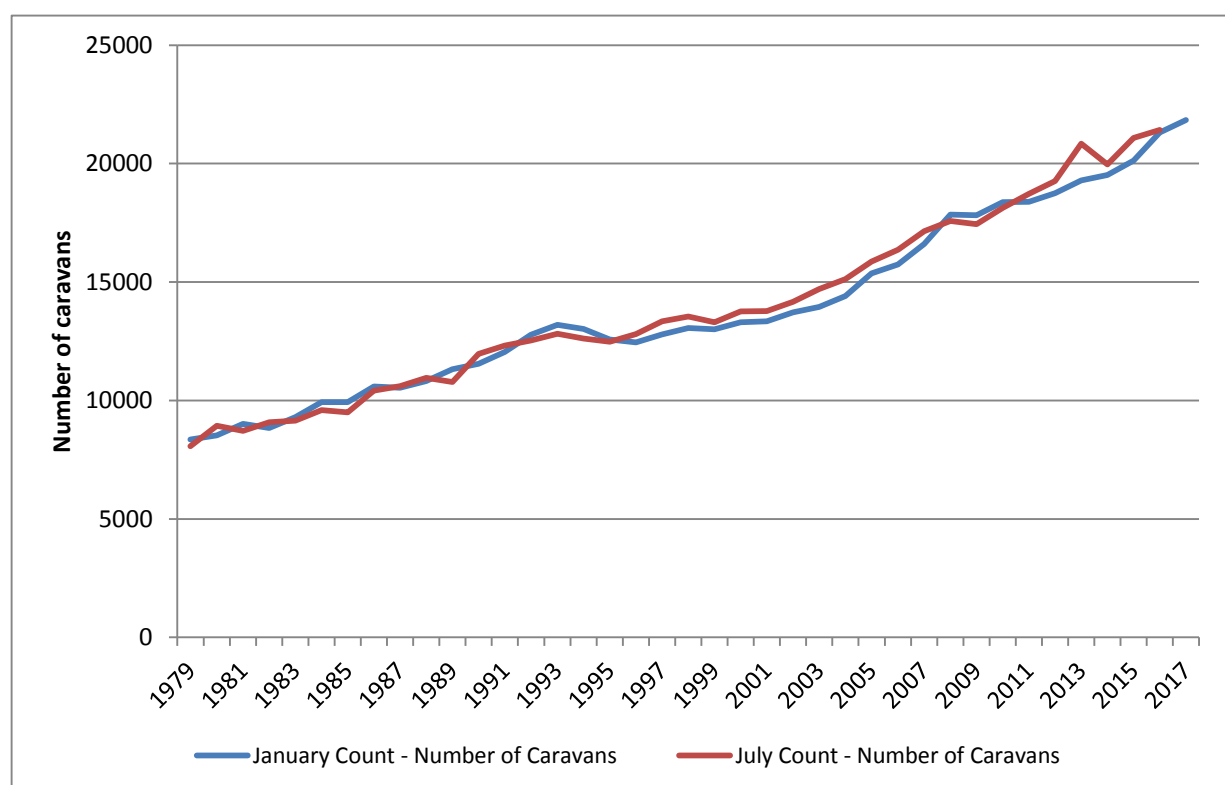
© Crown copyright and database rights 2015 Ordnance Survey 100024857

Data Sources
OS Boundary-Line & DCLG January 2017 TCC

Historic data

The traveller caravan count has taken place twice a year since January 1979. National totals from each count of the main categories of authorised and unauthorised sites are given in accompanying Live Table 4. The figures show an increase in the overall total from 8,358 caravans in January 1979 to 22,004 in January 2017. Figure 2 shows how the total number of traveller caravans in England has changed since 1979.

Figure 2: Number of Traveller Caravans from 1979 to 2017, England



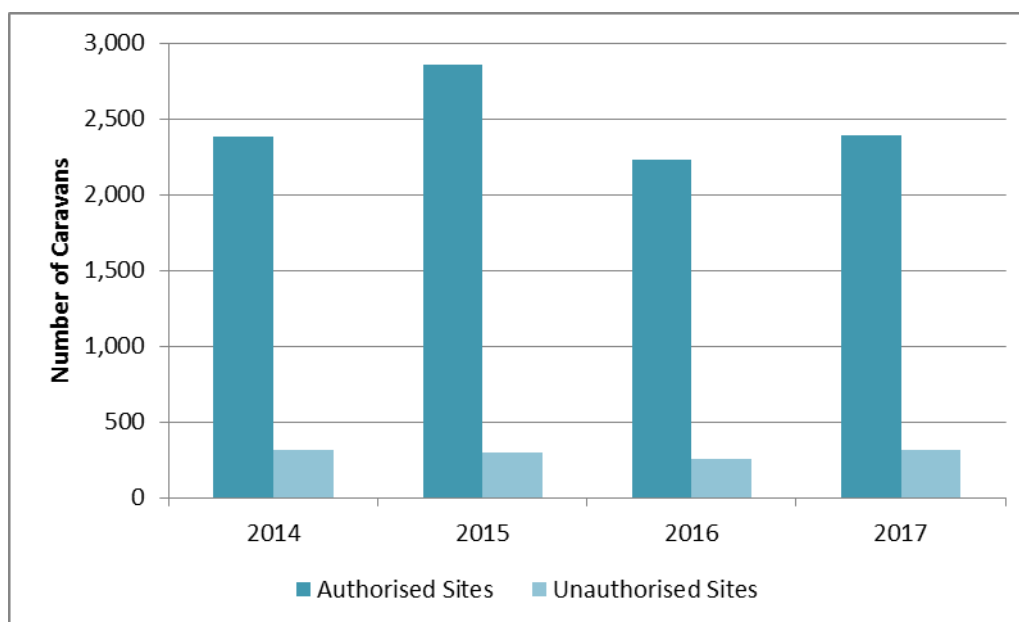
Travelling Showpeople Caravans

The January 2017 count also included a count of the caravans/moveable dwellings occupied by Travelling Showpeople in each local authority area in England. The results from previous years are published in Live Table 3, as 'experimental statistics'. Further information about experimental statistics is available on the Office for National Statistics website at:

<http://www.ons.gov.uk/ons/guide-method/method-quality/general-methodology/guide-to-experimental-statistics/index.html>.

The overall number of Travelling Showpeople caravans counted in January 2017 was 2,701, up 9 per cent from 2,487 in January 2016. This, in turn, was a decrease of 21 per cent from 3,159 caravans in January 2015. This is shown in Figure 3. For full disaggregated data on Travelling Showpeople Caravans see accompanying Live Table 3.

Figure 3: Number of Travelling Showpeople Caravans, January 2014 to January 2017



Accompanying tables

Accompanying tables are available to download alongside this release within a single workbook. These are:

- Table 1** Count of traveller caravans on authorised and unauthorised sites for the last five counts, nationally and by local authority area
- Table 2** Location and size of traveller sites operated by local authorities and private registered providers
- Table 3** Number of Travelling Showpeople caravans on authorised and unauthorised sites for the 2014, 2015, 2016 and 2017 counts nationally and by local authority area
- Table 4** National total for the main categories of authorised and unauthorised sites for each count since January 1979

These tables can be accessed at:

<https://www.gov.uk/government/statistics/traveller-caravan-count-january-2017>

Statistical releases and accompanying tables for previous caravan counts are available at:

<https://www.gov.uk/government/collections/traveller-caravan-count>.

Definitions

Local authorities carry out counts of caravans on traveller sites in England which provide a snapshot of caravans on the day of the count. These take place twice a year, in January and July, to capture information about the number of caravans on:

- *authorised public sites* – operated by local authorities and private registered providers of social housing, including housing associations, trusts and cooperatives;
- *authorised private sites* – privately funded sites with planning permission;
- *unauthorised developments* – sites on land owned by travellers for which planning permission had not been granted; and
- *unauthorised encampments* – sites on land not owned by travellers and which do not have planning permission.

Unauthorised sites are classified as either 'Tolerated' or 'Not Tolerated':

- A '*Tolerated*' site is one where the local authority has decided not to seek the removal of the encampment, and where the encampment has been, or is likely to be, allowed to remain for an indefinite period of months or years.
- Some examples of a site which would be classified as '*Not Tolerated*' are where:
 - A planning enforcement notice has been served (including Temporary Stop Notices),
 - The results of a planning enquiry are pending,
 - An injunction has been sought,
 - The compliance period has been extended.

This count was previously known as the 'Gypsy and Traveller Caravan Count', however there has been no change in the coverage of the count. It continues to include caravans lived in by Traditional and Ethnic Gypsies and Travellers as well as members of the non-traditional New Traveller groups who live in caravans or other moveable dwellings. We do not collect information on the ethnicity or any other characteristics of caravan occupants.

Technical notes

Data collection

The count of traveller caravans publication is compiled on a particular count day. A local authority representative will visit traveller caravan sites and carry out a manual count. This information is then submitted by local authorities in England via an online form. This data is collected and published twice yearly to take into account seasonal variation in the use of Caravan sites. A count of Travelling Showpeople's caravans or moveable dwellings is included in the January count only.

Although there is no statutory requirement on local authorities to submit data, the count is included on the Single Data List, a list of all the datasets that local government must submit to central government. A large majority of local authorities do, however, carry out the count and provide information to the Department. Those that do not do so are footnoted in the accompanying Live Table 1.

More details on the Single Data List are available at:

<https://www.gov.uk/government/policies/making-local-councils-more-transparent-and-accountable-to-local-people/supporting-pages/single-data-list>.

Data quality

The data are collected by the Department and undergo a process of scrutiny to ensure that the published count is as accurate as possible. The Department follows up late returns and conducts further validation checks to ensure overall response is as complete and accurate as possible.

The count data are subject to the Pre-Release Access to Official Statistics Order, which means that advance access to the statistics is controlled and publicised.

In total, 92 per cent of the 326 English local authorities with housing responsibilities submitted at least some figures for January 2017, compared with a 90 per cent response rate for the January 2016 count. If a local authority did not submit a return for a site for the January 2017 count, figures for the number of caravans on that site from the previous January count are taken without adjustment. If the local authority had also not submitted a return for that site from the previous count, figures for the number of caravans are taken from the next most recent January count. This is repeated for three counts: January 2016, January 2015 and January 2014. If a local authority has not submitted a return for a particular site within this period then the number of caravans is taken to be zero at this site.

Any large proportional or absolute changes in total caravans at a site level between annual counts are checked with the relevant local authorities.

Where data has been taken from previous years' counts rather than the most recent this is indicated in the accompanying live tables.

Revisions policy

This policy has been developed in accordance with the UK Statistics Authority Code of Practice for Official statistics and the Department for Communities and Local Government Revisions Policy (found at <https://www.gov.uk/government/publications/statistical-notice-dclg-revisions-policy>).

There are two types of revision that the policy covers:

Non-Scheduled Revisions

Where a substantial error has occurred as a result of the compilation, imputation or dissemination process, the statistical release and accompanying tables will be updated with a correction notice as soon as is practical.

Where a local authority notifies DCLG of an error in the information they have submitted after publication of the release a decision on whether to revise will be made based upon the impact of any change and the effect it has on the interpretation of the data.

Scheduled Revisions

We do not currently have scheduled revisions for this release. Revisions to historic data (all data older than that currently due for scheduled revision) will be made only where there is a substantial revision, such as a change in methodology or definition.

Uses of the data

The data are collected to inform central government and local authority policy, and the delivery of local services, covering travellers, and their sites and encampments. In particular, figures are used by DCLG to identify the need for site provision and in tackling unauthorised encampments and developments. We are keen to know about how external stakeholders use these data and so would appreciate feedback from users, addressed to: housing.statistics@communities.gov.uk

User engagement

Users are encouraged to provide feedback on how these statistics are used and how well they meet user needs. Comments on any issues relating to this statistical release are welcomed and encouraged. Responses should be addressed to housing.statistics@communities.gov.uk

The Department's engagement strategy to meet the needs of statistics users is published here: <https://www.gov.uk/government/publications/engagement-strategy-to-meet-the-needs-of-statistics-users>

Notes

1. Details of officials who receive pre-release access to the count of traveller caravans up to 24 hours before release can be found in the section on 'Pre-release access to official statistics' at: <https://www.gov.uk/government/organisations/department-for-communities-and-local-government/about/statistics>
2. The next count of traveller caravans is due to take place on or around 14 July 2017.

Devolved administration statistics

The Welsh Government collects and publishes statistics on traveller caravans in Wales. Published information is available at:

<http://wales.gov.uk/statistics-and-research/gypsy-traveller-caravan-count/?lang=en>.

The Scottish Government collects and publishes information on travellers in Scotland and further details are available at <http://www.gov.scot/Topics/People/Equality/gypsiestravellers>. A review of the evidence base is available at

<http://www.gov.scot/Topics/People/Equality/Equalities/GypsyTravellerScotland>

Information on traveller accommodation in Northern Ireland is available at:

http://www.nihe.gov.uk/index/sp_home/strategies/travellers.htm

Enquiries

Media enquiries:

Office hours: 0303 444 1157

0303 444 1159

Out of hours: 0303 444 1201

Email: press@communities.gsi.gov.uk

Responsible Statistician:

Callum Ward

Phone: 0303 444 42007

Email: housing.statistics@communities.gov.uk

Information on the UK statistical system is available via the UK Statistics Authority website:

<http://www.statisticsauthority.gov.uk/about-the-authority/uk-statistical-system/index.html>

Information about statistics at DCLG is available via the Department's website:

www.gov.uk/government/organisations/department-for-communities-and-local-government/about/statistics

© Crown copyright, 2017

Copyright in the typographical arrangement rests with the Crown.

You may re-use this information (not including logos) free of charge in any format or medium, under the terms of the Open Government Licence. To view this licence, www.nationalarchives.gov.uk/doc/open-government-licence/ or write to the Information Policy Team, The National Archives, Kew, London TW9 4DU, or email: psi@nationalarchives.gsi.gov.uk.

This document/publication is also available on our website at www.gov.uk/dclg

If you have any enquiries regarding this document/publication, email contactus@communities.gov.uk or write to us at:

Department for Communities and Local Government
Fry Building
2 Marsham Street
London
SW1P 4DF
Telephone: 030 3444 0000

May 2017

For all our latest news and updates follow us on Twitter: <https://twitter.com/CommunitiesUK>

ISBN: 978-1-4098-5055-7