

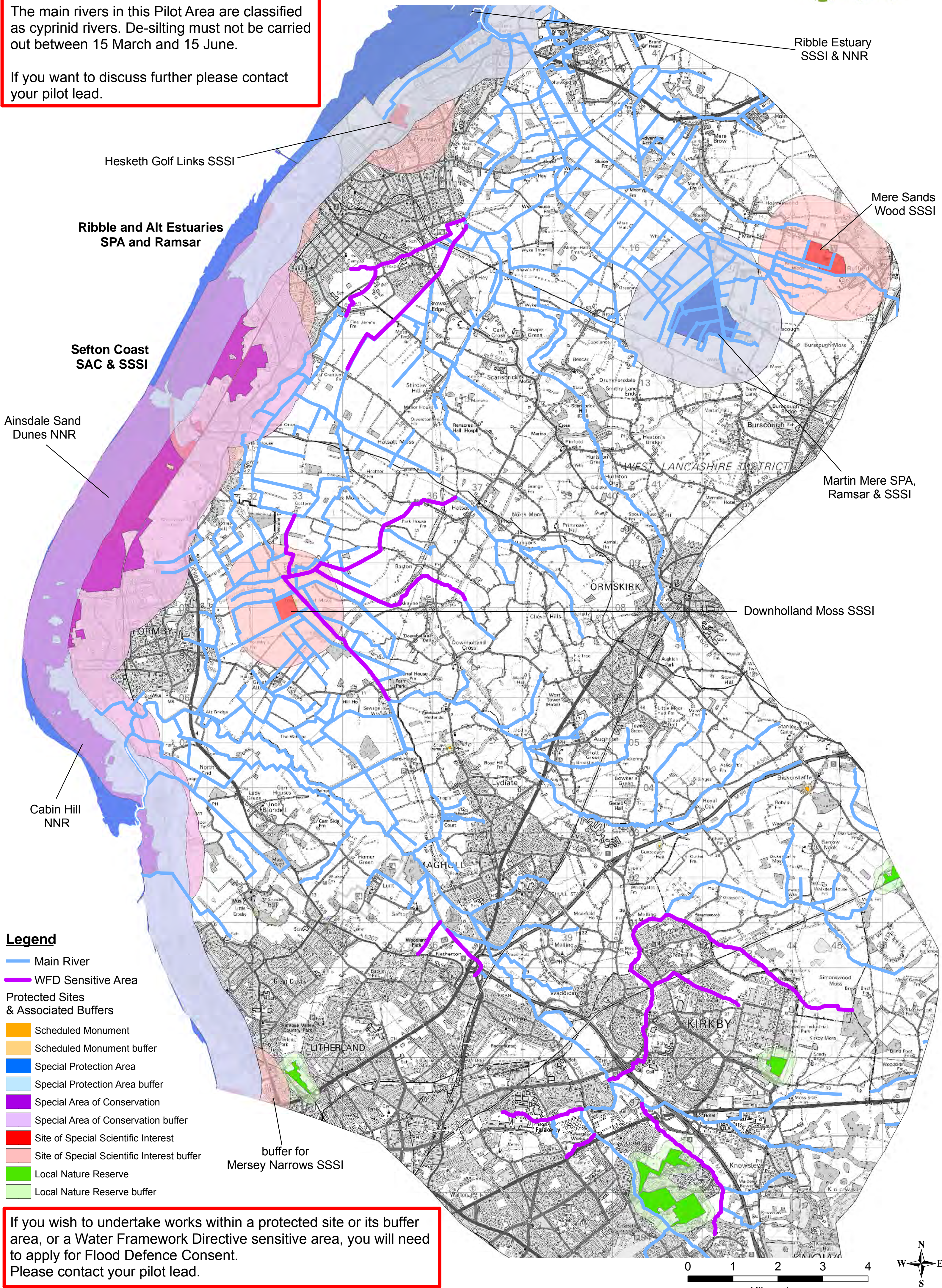
Appendix 3 Boundary and environmental maps for each pilot area

1. Alt Crossens
2. Bottesford Beck
3. River Brue
4. Duckow
5. East Lytham
6. River Eau
7. Isle of Axholme and River Idle
8. Upper Thames
9. Winestead Drain

Alt Crossens River Maintenance Pilot Area Environmental Requirements

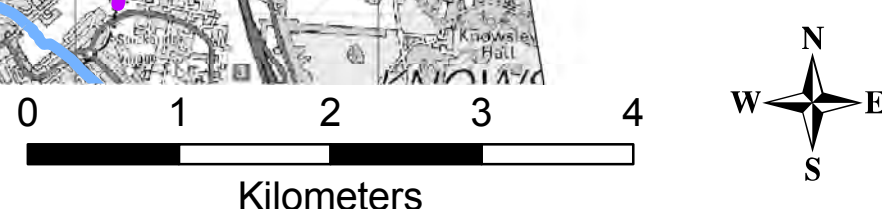
The main rivers in this Pilot Area are classified as cyprinid rivers. De-silting must not be carried out between 15 March and 15 June.

If you want to discuss further please contact your pilot lead.



- Legend**
- Main River
 - WFD Sensitive Area
 - Protected Sites & Associated Buffers**
 - Scheduled Monument
 - Scheduled Monument buffer
 - Special Protection Area
 - Special Protection Area buffer
 - Special Area of Conservation
 - Special Area of Conservation buffer
 - Site of Special Scientific Interest
 - Site of Special Scientific Interest buffer
 - Local Nature Reserve
 - Local Nature Reserve buffer

If you wish to undertake works within a protected site or its buffer area, or a Water Framework Directive sensitive area, you will need to apply for Flood Defence Consent. Please contact your pilot lead.



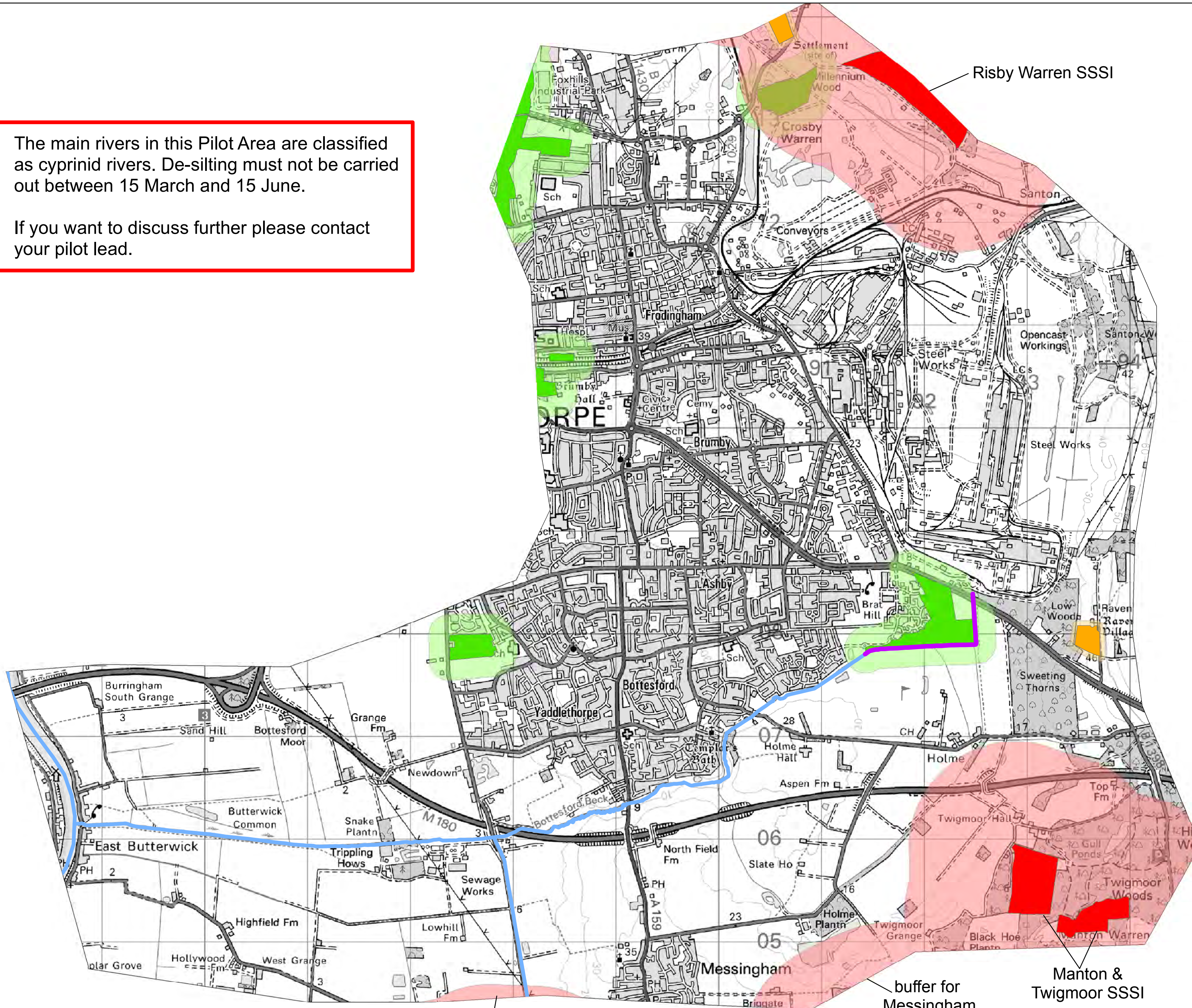
Bottesford Beck River Maintenance Pilot Area Environmental Requirements

The main rivers in this Pilot Area are classified as cyprinid rivers. De-silting must not be carried out between 15 March and 15 June.

If you want to discuss further please contact your pilot lead.

If you wish to undertake works within a protected site or its buffer area, or a Water Framework Directive sensitive area, you will need to apply for Flood Defence Consent.

Please contact your pilot lead.



Legend

- Main River
- Water Framework Directive Sensitive Area

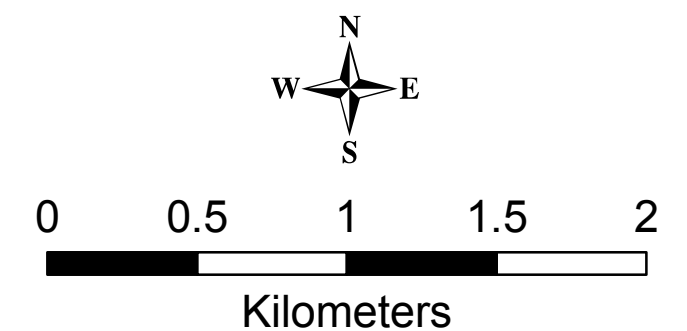
Protected Sites & Associated Buffers

- Scheduled Monument
- Scheduled Monument buffer
- Site of Special Scientific Interest
- Site of Special Scientific Interest buffer
- Local Nature Reserve
- Local Nature Reserve buffer

buffer for Messingham Heath SSSI

buffer for Messingham Sand Quarry SSSI

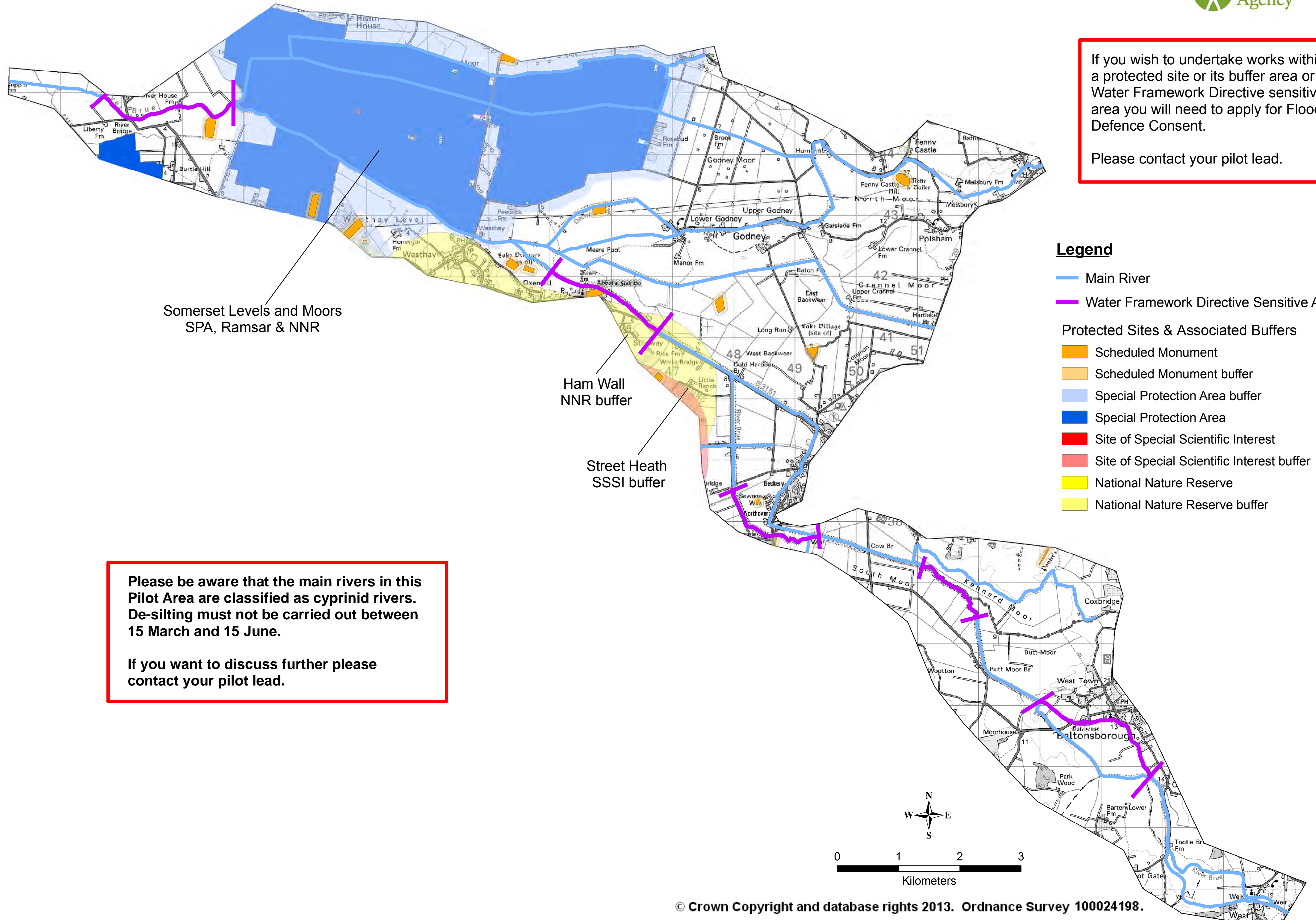
Manton & Twigmoor SSSI



River Brue River Maintenance Pilot Area Environmental Requirements

If you wish to undertake works within a protected site or its buffer area or a Water Framework Directive sensitive area you will need to apply for Flood Defence Consent.

Please contact your pilot lead.

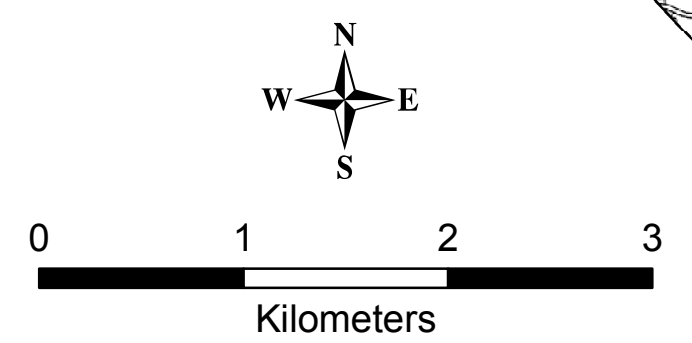


Legend

- Main River
 - Water Framework Directive Sensitive Area
- Protected Sites & Associated Buffers
- Scheduled Monument
 - Scheduled Monument buffer
 - Special Protection Area buffer
 - Special Protection Area
 - Site of Special Scientific Interest
 - Site of Special Scientific Interest buffer
 - National Nature Reserve
 - National Nature Reserve buffer

Please be aware that the main rivers in this Pilot Area are classified as cyprinid rivers. De-silting must not be carried out between 15 March and 15 June.

If you want to discuss further please contact your pilot lead.



Duckow River Maintenance Pilot Area Environmental Requirements

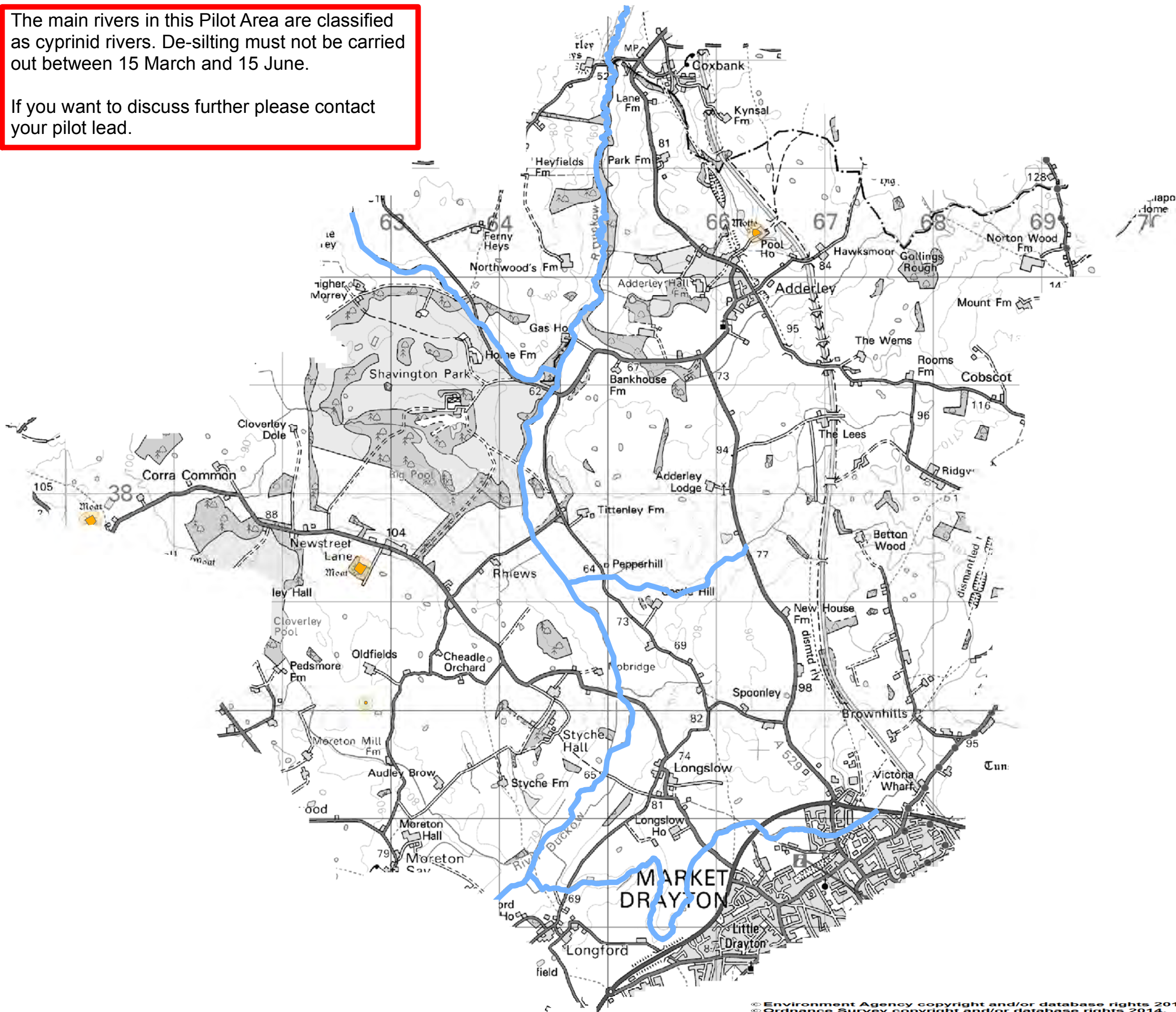
The main rivers in this Pilot Area are classified as cyprinid rivers. De-silting must not be carried out between 15 March and 15 June.

If you want to discuss further please contact your pilot lead.

If you wish to undertake works within a protected site or its buffer area, you will need to apply for Flood Defence Consent.

Please contact your pilot lead.

NB There have been no stretches currently identified as requiring a Flood Defence Consent for Water Framework Directive concerns.



East Lytham River Maintenance Pilot Area Environmental Requirements

The main rivers in this Pilot Area are classified as cyprinid rivers. De-silting must not be carried out between 15 March and 15 June.

If you want to discuss further please contact your pilot lead.

If you wish to undertake works within a protected site or its buffer area, or a Water Framework Directive sensitive area, you will need to apply for Flood Defence Consent.

Please contact your pilot lead.

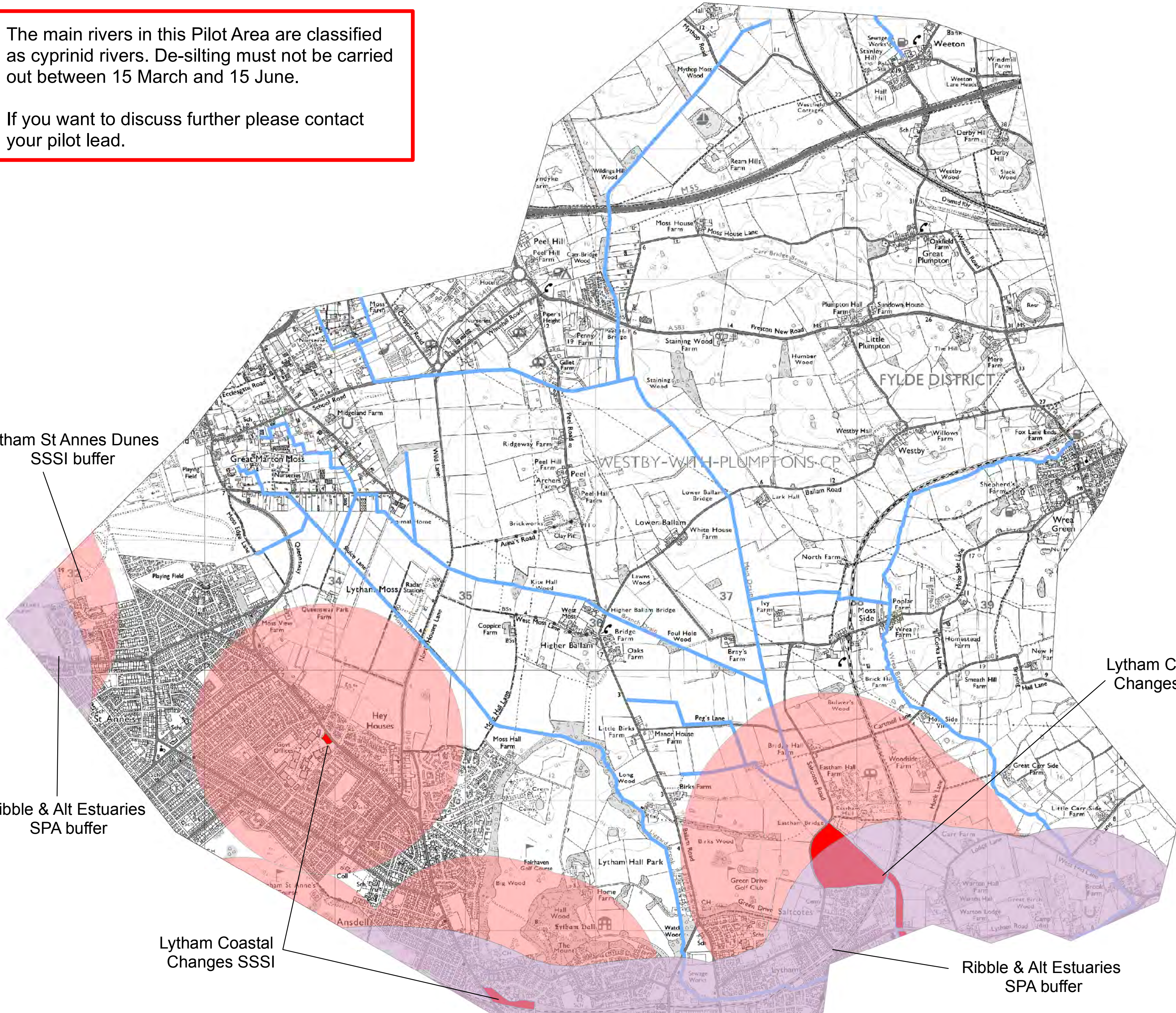
Lytham St Annes Dunes SSSI buffer

Ribble & Alt Estuaries SPA buffer

Lytham Coastal Changes SSSI

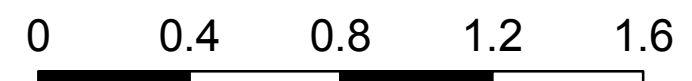
Lytham Coastal Changes SSSI

Ribble & Alt Estuaries SPA buffer



Legend

- Main River
 - Special Protection Area
 - Special Protection Area buffer
 - Site of Special Scientific Interest
 - Site of Special Scientific Interest buffer
- Protected Sites & Associated Buffers



Kilometers

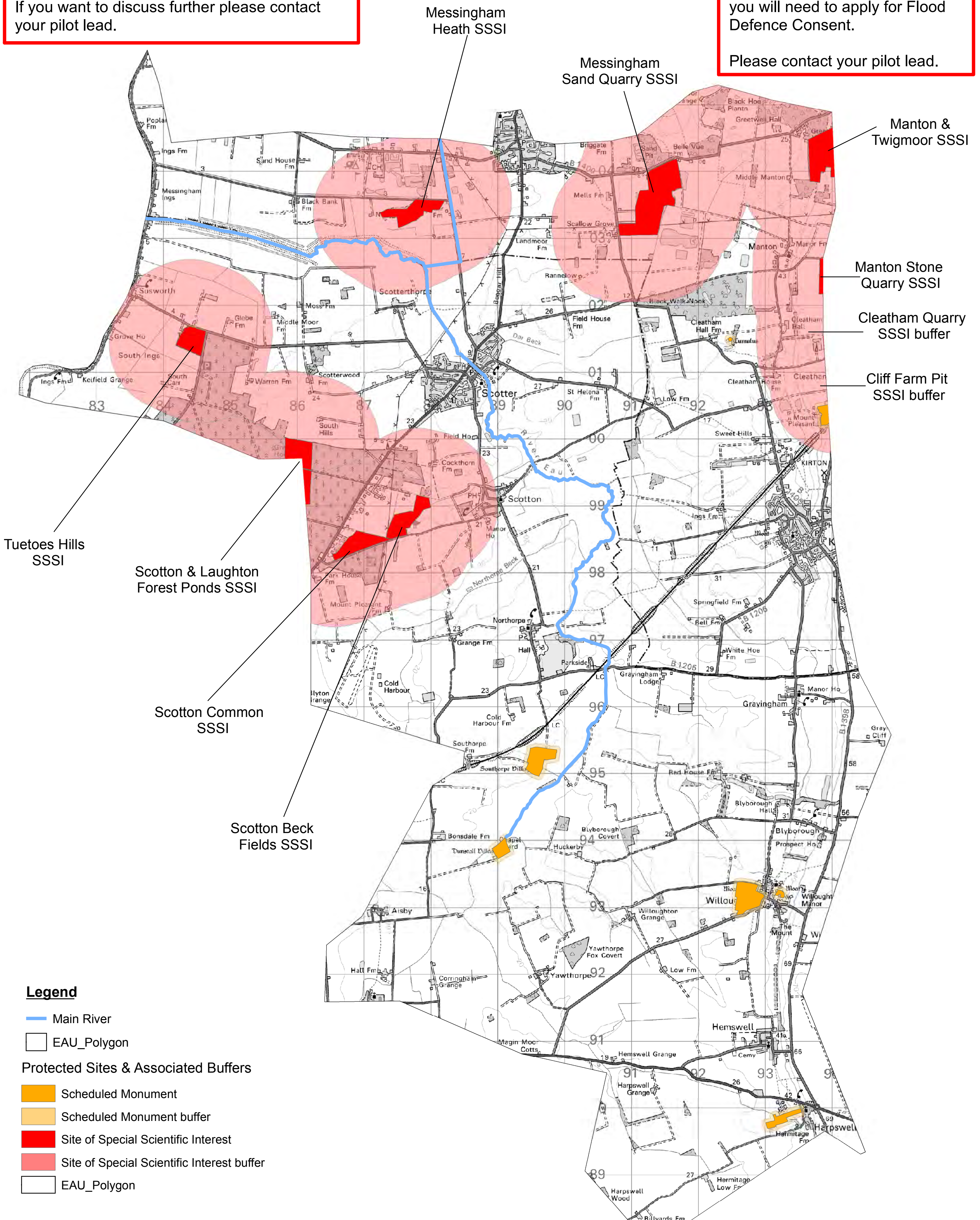
River Eau River Maintenance Pilot Area Environmental Requirements

The main rivers in this Pilot Area are classified as cyprinid rivers. De-silting must not be carried out between 15 March and 15 June.

If you want to discuss further please contact your pilot lead.

If you wish to undertake works within a protected site or its buffer area, or a Water Framework Directive sensitive area, you will need to apply for Flood Defence Consent.

Please contact your pilot lead.



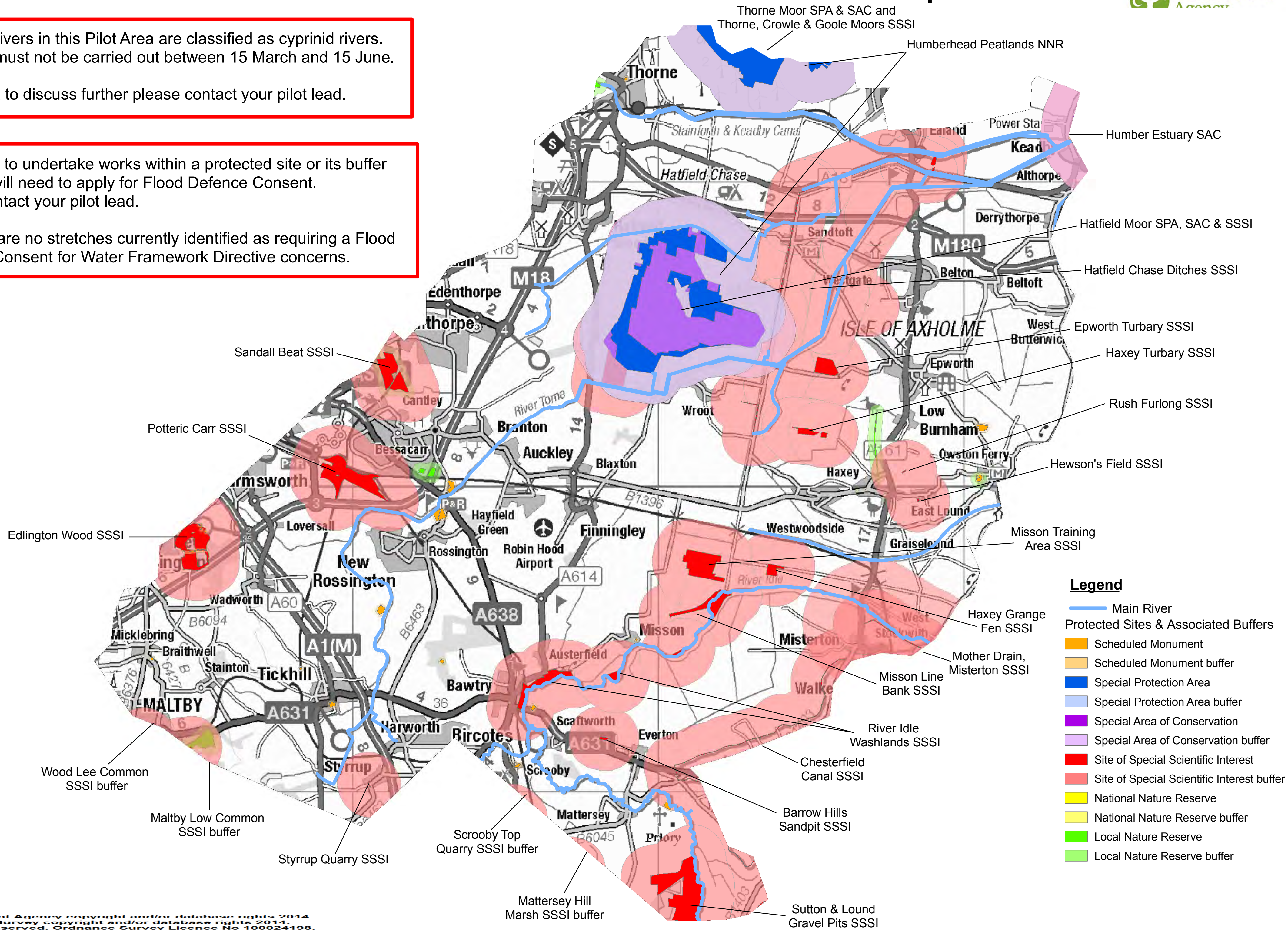
Isle of Axholme & River Idle Maintenance Pilot Area Environmental Requirements

The main rivers in this Pilot Area are classified as cyprinid rivers. De-silting must not be carried out between 15 March and 15 June.

If you want to discuss further please contact your pilot lead.

If you wish to undertake works within a protected site or its buffer area you will need to apply for Flood Defence Consent. Please contact your pilot lead.

NB There are no stretches currently identified as requiring a Flood Defence Consent for Water Framework Directive concerns.



Legend

- Main River
- Protected Sites & Associated Buffers**
- Scheduled Monument
- Scheduled Monument buffer
- Special Protection Area
- Special Protection Area buffer
- Special Area of Conservation
- Special Area of Conservation buffer
- Site of Special Scientific Interest
- Site of Special Scientific Interest buffer
- National Nature Reserve
- National Nature Reserve buffer
- Local Nature Reserve
- Local Nature Reserve buffer

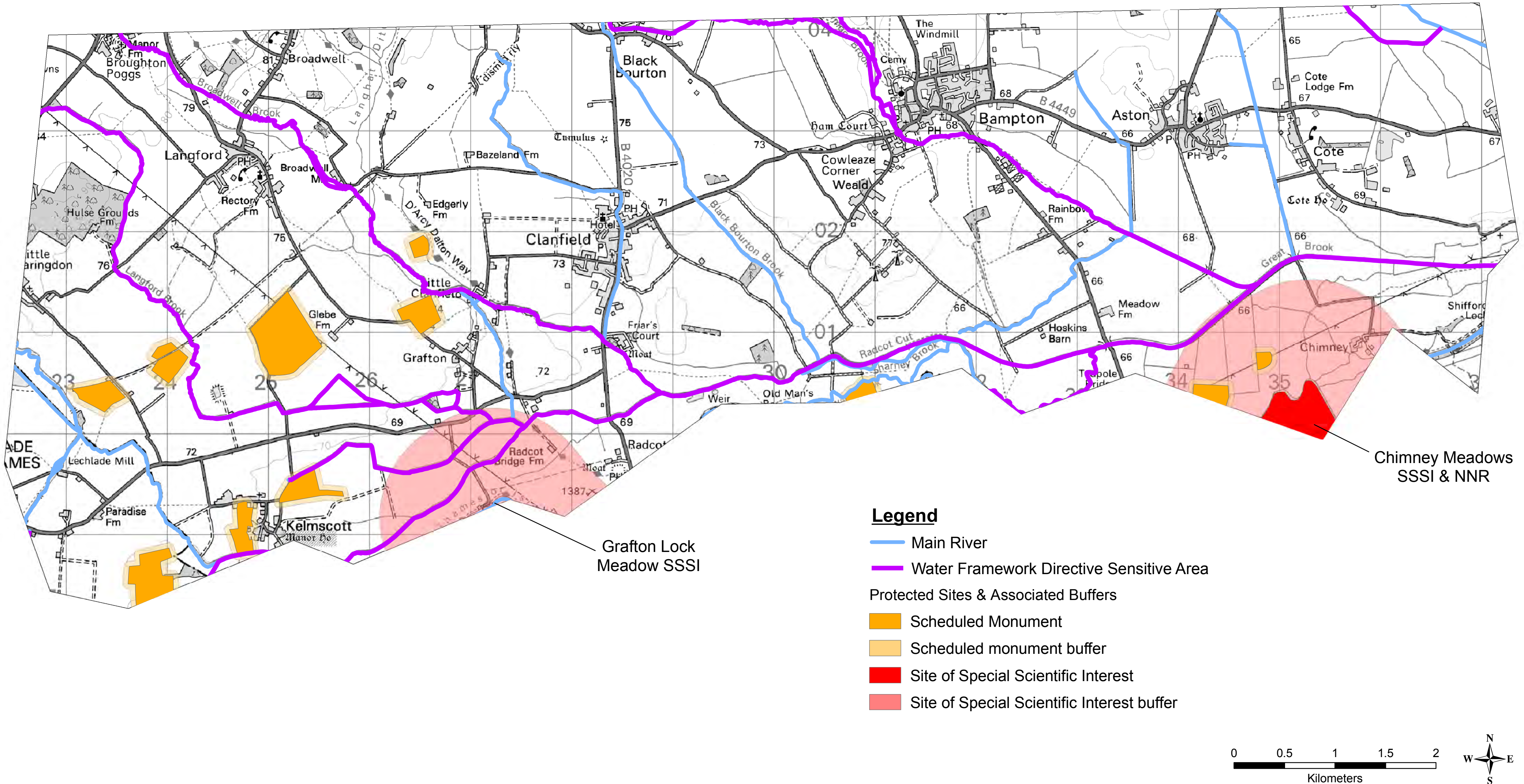
Upper Thames River Maintenance Pilot Area Environmental Requirements

The main rivers in this Pilot Area are classified as cyprinid rivers. De-silting must not be carried out between 15 March and 15 June.

If you want to discuss further please contact the pilot lead.

If you wish to undertake works within a protected site, its buffer area, or a Water Framework Directive sensitive area, you will need to apply for Flood Defence Consent.

Please contact the pilot lead.



Winestead Drain River Maintenance Pilot Area Environmental Requirements

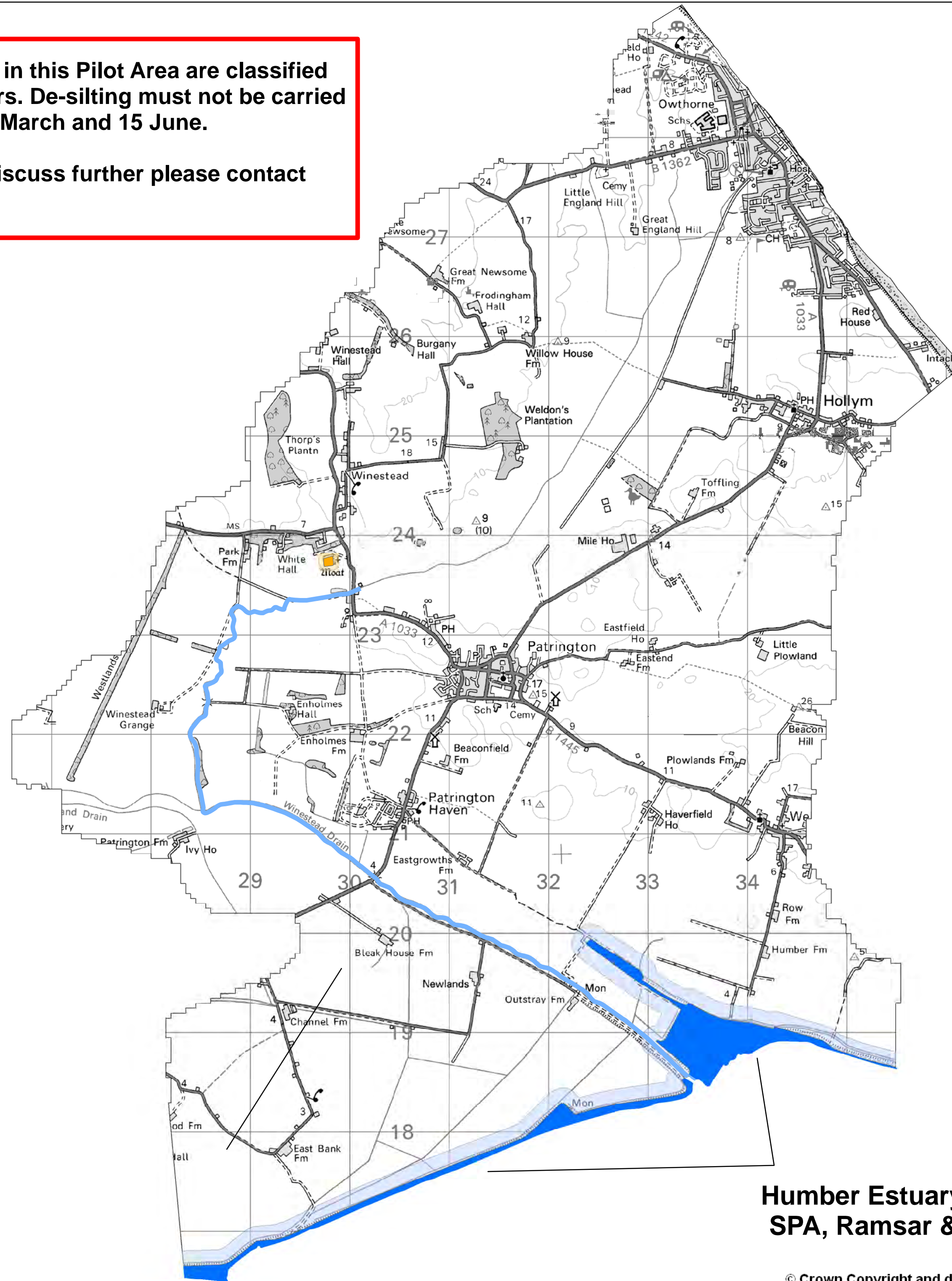
The main rivers in this Pilot Area are classified as cyprinid rivers. De-silting must not be carried out between 15 March and 15 June.

If you want to discuss further please contact your pilot lead.

If you wish to undertake works within a protected site, its buffer area, you will need to apply for Flood Defence Consent.

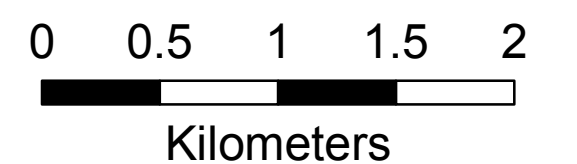
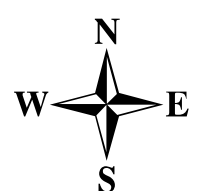
Please contact your pilot lead.

NB There have been no stretches currently identified as requiring a Flood Defence Consent for Water Framework Directive concerns.



Legend

- Main River
- Protected Sites & Associated Buffers
- Scheduled Monument
- Scheduled Monument buffer
- Special Protection Area
- Special Protection Area buffer



Humber Estuary SAC,
SPA, Ramsar & SSSI