

Royal Navy and Royal Marines Monthly Personnel Situation Report for December 2015



Ministry of Defence

(Published 14 January 2016)

Statistical Release

Issued by:
Defence Statistics

The statistician responsible for this report is the Defence Statistics (Navy) Head of Branch.

Email:
Defstrat-stat-navy-hd@mod.uk

If you would like to be informed by email of updates to this publication please subscribe via email:
Defstrat-stat-Navy@mod.uk

We welcome feedback, comments and queries on this report. Please contact us on the above email

The Background Quality Report for this publication can be found at:
[Background Quality Report](#)

Links to other publications which may be of interest

[UK Armed Forces Redundancy Programme Statistics](#) This publication contains information on the number of UK Armed Forces personnel either applying or being selected for redundancy in the various tranches. Please note that not all of those who applied were selected and not all of those that were selected had applied for redundancy.

[Royal Navy Quarterly Pocket Brief](#) This quarterly publication contains information on strengths, requirements, intakes and outflows from the Royal Navy service

This publication is a monthly report providing information on the number of Royal Navy and Royal Marine personnel joining and leaving the Regular service. It also shows the strengths of the Regular and Full Time Reserves Service (FTRS) Royal Navy and Royal Marines by rank and Length of Service. This publication is complemented by the [Royal Navy Quarterly Pocket Brief](#) which also shows breakdown of ethnicity in the RN/RM, Army and RAF.

Information about some of the tables used in this report The Royal Marine Aircrew-men are included with XAV; Royal Marine Medical Assistants are included with Medical. Where an RM/RN total split is given they are included with the RM. Warfare Officers include Royal Marine pilots. From August 2015 Communication and Information Specialists are now counted towards Engineer Technician (Weapon Engineer) having moved from Warfare branch. This has implications for tables 1a, 9b, 10b and 12b. FTRS are only included in table 1, unless otherwise stated.

Voluntary Outflow (VO) Voluntary Outflow exit rates are calculated using the 12 month total VO divided by the average strength, which is calculated using a 12 month centred rolling average. This centres the data and gets a midpoint month. 13 months of strengths are used, starting mid-way through one month and ending mid-way through the same month a year later. This way the moving average VO rate falls on a specific month rather than being in between months.

Key Points for December 2015

Strengths

- The trained regular strength of the RN/RM including FTRS Regulars was 29,740 giving a deficit of 1.7% against the liability as shown in Table 1a.
- The trained regular strength excluding FTRS regulars was 29,470, an decrease of 20 from the previous month, also shown in Table 1a.

Outflows

- The total outflow from the trained regular strength excluding FTRS, was 2,790 in the 12 months to 1 December 2015, made up of 2,340 Ratings and 460 Officers as shown in Tables 9a and 9b.

Royal Navy and Royal Marines Monthly Personnel Situation Report - Contents List

[Summary of NATO Ranks](#)

[Glossary of Terms and Definitions used within this publication](#)

[Revisions](#)

[Data Sources](#)

[Data Issues - Strengths and Weaknesses](#)

[Rounding Policy](#)

[Liability](#)

[Feedback](#)

Current and Historic Trained Strengths

- 1a. Trained strengths and liability
- 1b. Summary of RN/RM strengths by service and arm
- 1c. Graph of historic trained regular trained strengths and liability by Quarter
- 1d. Graph of historic trained regular trained strengths and liability by Month

Trained strengths by Branch, Specialisation and Arm

- 2a. Trained regular Officer strengths and liability by Branch, Specialisation and Arm
- 2b. Trained regular Ratings strengths and liability by Branch, Specialisation and Arm
- 2c. FTRS Officers (regular and non-regular) strengths and liability by Branch, Specialisation and Arm
- 2d. FTRS Ratings (regular and non-regular) strengths and liability by Branch, Specialisation and Arm

Trained regular strengths by branch and paid rank

- 3a. Trained regular Officer strengths and liability
- 3b. Trained regular Ratings strengths and liability
- 3c. Graphs of trained regular Officer surplus/deficit by paid rank
- 3d. Graphs of trained regular Ratings surplus/deficit by paid rank
- 3e. FTRS Officer strengths by branch and paid rank
- 3f. FTRS ratings strengths by branch and paid rank

Trained regular strengths by branch specialisation, arm and paid rank

- 4a. (GS) Trained regular Officer General Service strengths by Branch, Specialisation, Arm and paid rank
- 4a. (SM) Trained regular Officer Submariner strengths by Branch, Specialisation, Arm and paid rank
- 4a. (FAA) Trained regular Officer Fleet Air Arm Branch, Specialisation, Arm and paid rank
- 4b. (GS) Trained regular Ratings General Service strengths by Branch, Specialisation, Arm and paid rank
- 4b. (SM) Trained regular Ratings Submariner strengths by Branch, Specialisation, Arm and paid rank
- 4b. (FAA) Trained regular Ratings Fleet Air Arm strengths by Branch, Specialisation, Arm and paid rank

Untrained regular strengths by branch and Paid Rank

- 5a. Untrained regular Officer strengths by Branch and paid rank
- 5b. Untrained regular Ratings strengths by Branch and paid rank

Trained regular strengths by Top Level Budget (TLB) and paid rank

- 6a. Trained regular strength by TLB and paid rank

Trained regular length of service (LoS)

- 7a. Trained regular length of service by rank
- 7b. Graph of trained regular Officer length of service by paid rank split by RN and RM
- 7c. Graph of regular Ratings and length of service by paid rank split by RN and RM

Trained regular Officer and Rating due outflow over the next 12 months

- This table was removed from the publication in July 2013

Trained regular outflow

- 9a. Trained regular Officer outflow
- 9b. Trained Regular Rating outflow

Trained Regular Voluntary Outflow

- 10a. Trained Regular Officer voluntary outflow exits by paid rank
- 10b. Trained Regular Rating voluntary outflow exits by paid rank

Trained regular promotion to substantive rank

- 11a. Trained regular Officer promotions to substantive rank
- 11b. Trained regular Ratings promotions to substantive rank

Gains to the Trained Strength (GTS)

- 12a. Gains to the Officer trained strength by Branch showing the last 4 full financial years and the last 12 months.
- 12b. Gains to the Ratings trained strength by Branch showing the last 4 full financial years and the last 12 months

Trained Intake from 'Civil Life' or 'Another Service'

- 13a. Trained intake to the regular service showing the last 4 full financial years, the last 12 months and the last month

Summary of NATO Ranks

Officers				
NATO Rank	Royal Navy	Royal Marines	Army	RAF
OF10	Admiral of The Fleet	N/A	Field Marshal	Marshal of the RAF
OF9	Admiral of The Fleet	General	General	Air Chief Marshal
OF8	Vice Admiral	Lieutenant General	Lt – General	Air Marshal
OF7	Rear Admiral	Major General	Major General	Air Vice Marshal
OF6	Commodore	Brigadier	Brigadier	Air Commodore
OF5	Captain	Colonel	Colonel	Group Captain
OF4	Commander	Lt Colonel	Lt Colonel	Wing Commander
OF3	Lieutenant Commander	Major	Major	Squadron Leader
OF2	Lieutenant	Captain	Captain	Flight Lieutenant
OF1	Sub-Lieutenant	Lieutenant / 2 nd Lieutenant	Lieutenant / 2 nd Lieutenant	Flying Officer / Pilot Officer
OFD	Officer Designate	Officer Designate	N/A	N/A

Ratings				
NATO Rank	Royal Navy	Royal Marines	Army	RAF
OR9	Warrant Officer 1	Warrant Officer 1	Warrant Officer 1	Warrant Officer
OR8	Warrant Officer 2	Warrant Officer 2	Warrant Officer 2	N/A
OR7	Chief Petty Officer	Colour Sergeant	Staff Sergeant	Flight Sergeant
OR6	Petty Officer	Sergeant	Sergeant	Sergeant
OR5	N/A	N/A	N/A	N/A
OR4	Leading Rate	Corporal	Corporal	Corporal
OR3	N/A	Lance Corporal	Lance Corporal	N/A
OR2	Able Rate	Marine (1 st Class)	Private	JT/LAC/SAC/AC
OR1*	Ordinary Rate / Junior	Marine (2 nd Class) / Junior	N/A	N/A

* Now obsolete

Glossary of Terms and Specialisations used within this publication

Term	Definition
Officer	An officer is a member of the Armed Forces holding the Queen's Commission to lead and command elements of the forces. Officers form the middle and senior management of the Armed Forces. This includes ranks from Sub-Lt/2nd Lt/Pilot Officer up to Admiral of the Fleet/Field Marshal/Marshal of the Royal Air Force, but excludes Non-Commissioned Officers
Other Ranks / Ratings	Other Ranks are members of the Royal Marines who are not Officers (but Other Ranks do include Non-Commissioned Officers). The equivalent group in the Royal Navy is known as "Ratings".
Ministry of Defence	The Ministry of Defence (MOD) is the United Kingdom government department responsible for the development and implementation of government defence policy and is the headquarters of the British Armed Forces. The principal objective of the MOD is to defend the United Kingdom and its interests. The MOD also manages day to day running of the armed forces, contingency planning and defence procurement.
RNR	Royal Naval Reserve is the Volunteer Reserve element of the Royal Navy. Together with the Royal Marine Reserve they make up the Maritime Reserve .
RMR	Royal Marine Reserve is the Volunteer Reserve element of the Royal Marines. Together with the Royal Naval Reserve they make up the Maritime Reserve .
Maritime Reserve	Is the Volunteer Reserve element of the Naval Service that count towards the Future Reserve 2020 (FR20) programme. They comprise the Royal Naval Reserve and the Royal Marine Reserve and include mobilised and High Readiness Maritime Reserve personnel, plus Maritime Reserve personnel serving on FTRS and ADC contracts. The FR20 Trained Strength target for the Maritime Reserve is 3,100.
FTRS	FTRS (Full-Time Reserve Service) are personnel who fill Service posts for a set period on a full-time basis (this is different from mobilisation) while being a member of one of the Reserve Forces, either as an ex-regular or as a volunteer. An FTRS reservist on: Each Service uses FTRS personnel differently. The Naval Service predominantly uses FTRS to backfill gapped regular posts. However, they do have a small number of FTRS personnel that are not deployable for operations overseas.
FTRS Regular	FTRS Personnel counted against the Regular Liability
FTRS Non Regular	FTRS Personnel not counted against the Regular Liability
Transfer Trainees	Trained Personnel undergoing further training in an alternative discipline
GS	General Service - Surface Fleet
SM	Submarine - Submarines

FAA	Fleet Air Arm – The Royal Navy’s Aviation branch.
XR	Warfare General Service
XSM	Warfare Submarine
XAV	Warfare Aviation and RM Aircrew
EGS	General Service Engineers
ESM	Submarine Engineers
EAE	Aviation Engineers
QARNNS	Queen Alexandra’s Royal Naval Nursing Service – the Nursing branch of the Royal Navy which work alongside the Royal Navy Medical Branch
Strength	Is defined as the number of personnel (for each Service it is partially determined by its requirements)
Trained Strength	Comprises military personnel who have completed Phase 1 and 2 training. Phase 1 training includes all new entry training to provide basic military skills. Phase 2 training includes initial individual specialisation, sub-specialisation and technical training following Phase 1 training prior to joining the trained strength.
Untrained strength	Comprises military personnel who have yet to complete Phase 2 training.

Specialisation	Definition
AEA	Air Engineer Artificer
AEM	Air Engineer Mechanic
AET	Air Engineering Technician
CIS	Communications Information Systems
CISSM	Communications Information Systems Submarine
CMA	Chartered Management Accountant
CT	Communications Technician
Dental Hyg	Dental Hygienist
Dental SA	Dental Surgery Assistant
E(IS SM)	Engineer - Information Systems Submarine
E(IS)	Engineer - Information Systems
E(TM SM)	Engineering Training Manager Submarine
E(TM)	Engineering Training Manager
ET(ME)	Engineering Technician Marine Engineer
ET(MESM)	Engineering Technician Marine Engineer Submarine
ET(WE)	Engineering Technician Weapon Engineer
ET(WESM)	Engineering Technician Weapon Engineer Submarine
ETS	Education Training & Support
HM	Hydrographical Meteorological
HM(H)	HM(Hydrographic) (formally Survey Recorders)
HM(M)	HM(Meteorological) (formally NA(Meteorological))
Med Asst	Medical Assistant
Med Tech	Medical Technician

Specialisation	Definition
MEM	Marine Engineering Mechanic
NA(AC)	Naval Airman Aircraft Controller
NA(AH)	Naval Airman Aircraft Handler
NA(PHOT)	Naval Airman Photographer
NA(SE)	Naval Airman Survival Equipment
NN	Naval Nurse
PT	Physical Training Instructor
PWO	Principal Warfare Officer
PWO(A)	Principal Warfare Officer (Air)
PWO(C)	Principal Warfare Officer (Communications)
PWO(N)	Principal Warfare Officer (Navigation)
PWO(U)	Principal Warfare Officer (Underwater)
WEM	Weapon Engineering Mechanic
WS	Warfare Specialist
WS(AWT)	Warfare Specialist - Above Water Tactical
WS(AWW)	Warfare Specialist - Above Water Warfare
WS(EW)	Warfare Specialist - Electronic Warfare
WS(SSM)	Warfare Specialist Sensors Submarine
WS(TSM)	Warfare Specialist Tactical Submarine
WS(UW)	Warfare Specialist - Underwater Warfare

Revisions

Defence Statistics has undertaken a major review of all Armed Forces personnel data from the Joint Personnel Administration System (JPA). This has resulted in changes to the strengths, intake and outflow reported in this publication, the periods affected are: FLOWS – from period ending 31 March 2009 to the period ending 31 October 2011, changes to monthly outflow range from fewer than 10 to around 50. STRENGTHS – from 1 May 2009 to 1 November 2011 (inclusive), changes of around 20 per month have been made to the headline strengths. The revised data are considered finalised and are therefore no longer marked provisional. Data for 1 November 2011 and subsequent data are considered final.

The number of trained regular outflows (tables 9a, 9b, 10a and 10b) and promotions (table 11a) for financial years 2010/11, 2011/12 was reported incorrectly in previous situation reports dating from November 2012 to August 2014. Correct figures are reported in September 2014 and subsequent situation reports. No previous publications have been revised.

Data Sources

Royal Navy/ Royal Marines statistics prior to March 2006 are compiled from pay records held by the Service Personnel and Veterans Agency (SPVA, formerly the Armed Forces Personnel Administration Agency). In March 2006 the transfer of all Regular Service personnel records to the Joint Personnel Administration (JPA) system began. Statistics are compiled from JPA for the Royal Navy/ Royal Marines from November 2006.

Rounding Policy

All totals are rounded in accordance with the Defence Statistics rounding policy; therefore totals may not equal the sum of their parts. All numbers are rounded to the nearest 10 with numbers ending in 5 rounded to the nearest multiple of 20 to avoid bias. Numbers that would be rounded to 0 are represented by '~'.

Liability

Liability is also known as requirement. The liability used in this publication is taken from the Planning Liability PL 2-15, scaled to DP15.

Feedback

At Defence Statistics we welcome feedback on our statistical products, if you have any comments or questions about this publication or about the statistics produced by Defence Statistics in general, please contact us as follows:

Contact: **Defence Statistics**

Email: DefStrat-Stat-Navy@mod.uk

Visit our website: www.gov.uk/organisations/ministry-of-defence/about/statistics

1a

Royal Navy and Royal Marines Trained Strengths and Liability

	Apr-12	Apr-13	Apr-14	Apr-15
RN/RM Regulars	33,190	31,280	30,310	29,800
FTRS "Regulars" *	100	150	200	250
FTRS "Non-Regulars" *	260	250	300	350

	Jun-15	Jul-15	Aug-15	Sep-15	Oct-15	Nov-15	Dec-15
	29,620	29,620	29,640	29,550	29,450	29,490	29,470
	260	260	260	260	260	270	270
	350	360	360	360	380	380	390

Total	<i>RN/RM Strength</i>	33,290	31,420	30,510	30,060
	Royal Navy	25,970	24,430	23,260	22,790
	Royal Marines	7,220	6,850	7,050	7,020
	FTRS "Regulars" *	100	150	200	250
	Liability	34,800	30,530	30,340	30,290
	Regular Surplus/Deficit	-1,610	750	-40	-480
	Regular Surplus/Deficit (%)	-4.6%	2.4%	-0.1%	-1.6%
	Total Surplus/Deficit	-1,510	890	160	-230
	Total Surplus/Deficit (%)	-4.3%	2.9%	0.5%	-0.7%

	29,870	29,880	29,900	29,810	29,710	29,760	29,740
	22,610	22,620	22,630	22,540	22,480	22,550	22,560
	7,010	7,000	7,000	7,010	6,970	6,940	6,910
	260	260	260	260	260	270	270
	30,270	30,270	30,260	30,260	30,250	30,240	30,240
	-660	-640	-620	-710	-800	-750	-770
	-2.2%	-2.1%	-2.1%	-2.3%	-2.6%	-2.5%	-2.5%
	-400	-390	-360	-440	-540	-490	-500
	-1.3%	-1.3%	-1.2%	-1.5%	-1.8%	-1.6%	-1.7%

Officers		6,410	6,240	6,100	6,000
	Royal Navy	5,560	5,400	5,250	5,150
	Royal Marines General Service	780	750	750	750
	Royal Marines Band Service	10	10	10	10
	Transfer Trainees	20	10	10	10
	FTRS "Regulars" *	40	60	80	80
	Liability	6,500	5,810	5,850	5,950
	Surplus/Deficit	-90	420	240	60
	Surplus/Deficit (%)	-1.4%	7.3%	4.1%	1.0%

	5,960	5,950	5,920	5,930	5,900	5,890	5,870
	5,110	5,110	5,090	5,090	5,070	5,070	5,060
	740	730	730	720	720	710	700
	10	10	10	10	10	10	10
	10	10	10	10	10	10	10
	80	80	80	90	90	90	90
	5,940	5,940	5,950	5,950	5,960	5,960	5,960
	20	10	-30	-20	-60	-60	-80
	0.3%	0.2%	-0.5%	-0.4%	-0.9%	-1.1%	-1.4%

Ratings		26,880	25,190	24,410	24,050
	Warfare (General Service)	5,140	4,720	4,480	4,450
	Warfare (Submarine)	830	790	760	780
	Warfare (Air)	790	730	690	690
	Engineering (General Service)	4,490	4,100	3,740	3,540
	Engineering (Submarine)	2,130	2,060	1,970	1,920
	Engineering (Air)	3,260	3,110	3,030	2,970
	Logistics	2,880	2,680	2,630	2,560
	Medical	950	920	900	890
	Royal Marines General Service	5,960	5,630	5,720	5,700
	Royal Marines Band Service	340	340	340	340
	FTRS "Regulars" *	60	90	120	170
	Unknown	-	-	-	-
	Transfer Trainees	50	30	30	40
	Liability	28,300	24,720	24,490	24,340
	Surplus/Deficit	-1,420	470	-80	-280
	Surplus/Deficit (%)	-5.0%	1.9%	-0.3%	-1.2%

	23,920	23,930	23,970	23,880	23,810	23,860	23,860
	4,420	4,440	3,740	3,780	3,770	3,770	3,810
	780	780	580	580	570	570	570
	680	680	680	640	640	630	650
	3,530	3,520	4,250	4,220	4,210	4,250	4,260
	1,890	1,880	2,100	2,080	2,070	2,080	2,070
	2,930	2,930	2,920	2,900	2,890	2,910	2,900
	2,540	2,540	2,540	2,530	2,520	2,520	2,510
	870	870	860	860	870	870	880
	5,710	5,720	5,730	5,740	5,700	5,680	5,660
	340	340	340	340	350	340	340
	170	170	180	170	180	180	180
	-	-	-	-	-	-	-
	50	50	50	50	50	50	40
	24,330	24,330	24,310	24,300	24,290	24,290	24,280
	-420	-400	-340	-420	-480	-420	-420
	-1.7%	-1.6%	-1.4%	-1.7%	-2.0%	-1.7%	-1.7%

Dec-15 Edition.

From Jan 10 and elsewhere in this document, Liability split by Officer/Rating, Branch & Spec is taken from the relevant Planning Liability (currently PL 2-15) scaled to DP15. Monthly liability figures are calculated using a straight line interpolation between the relevant PL April points (currently April 15 and April 16).

* In this table only, the FTRS Strength has been split into those that are counted against the Regular Liability (FTRS "Regulars"), and those that are not (FTRS "Non-Regulars").

1b

Summary of Royal Navy and Royal Marines Strength by Service and Arm

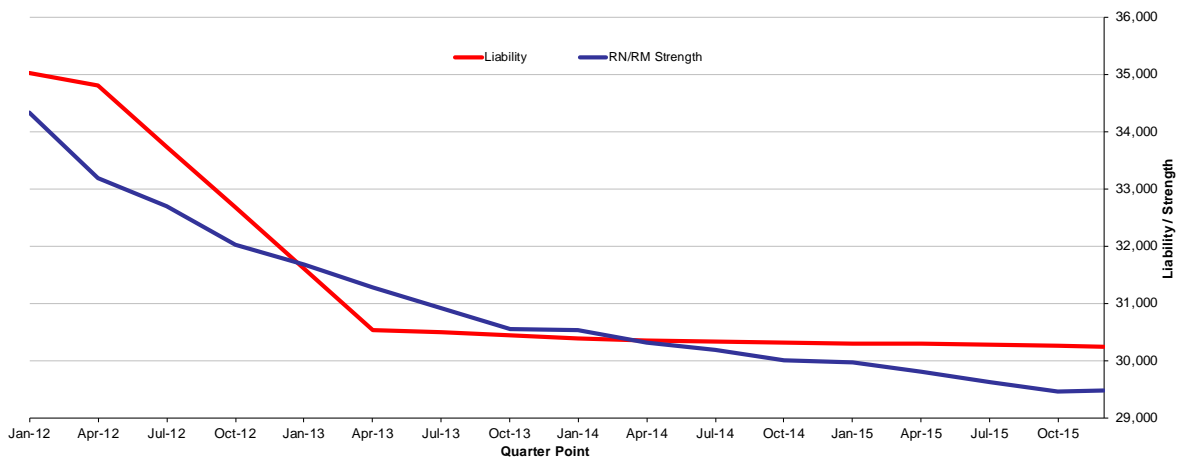
Total	29,740
Royal Navy	22,800
Royal Marines	6,940

	Officers Ratings	
Total	5,870	23,860
Royal Navy	5,150	17,650
Royal Marines	730	6,210

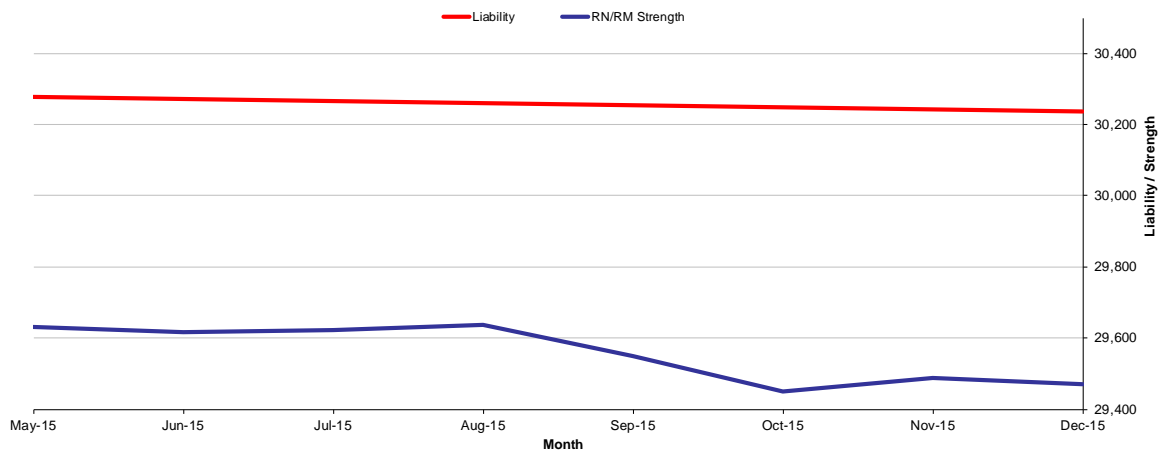
	GS	SM	FAA
Total	20,890	4,030	4,820
Royal Navy	14,020	4,030	4,750
Royal Marines	6,870	-	70

The strength shown is the total trained Regular and FTRS Regular Personnel
RN/RM figures are the Royal Navy and Royal Marines combined

1c Historic Trained Regular Royal Navy and Royal Marines Strengths and Liability by Quarter



1d Recent Trained Regular Royal Navy and Royal Marines Strengths and Liability by Month



Dec-15 Edition.

2a

Trained Regular Royal Navy and Royal Marine Officer Strengths* and Liability** by Branch, Specialisation and Arm

Branch	Specialisation	GS	SM	FAA	Total	Liability Surplus/Deficit
Total		3,740	860	1,180	5,770	-180
Warfare		1,330	300	900	2,540	2,610
	Air Traffic Control	-	-	70	70	
	Aviation	-	-	40	40	
	Communications	20	-	-	20	
	Intelligence Officer	130	-	-	130	
	Fighter Controller	40	-	-	40	
	General Service Warfare	280	-	-	280	
	Hydrographic/Meteorological	160	-	-	160	
	Mine Clearance Diver	80	-	-	80	
	Mine Warfare	20	-	-	20	
	Observer	-	-	310	310	
	Pilot	-	-	450	450	
	RM Pilot	-	-	40	40	
	Principal Warfare Officer (PWO)	220	-	-	220	
	PWO (Above Water)	150	-	-	150	
	PWO (Communications)	60	-	-	60	
	PWO (Navigation)	70	-	-	70	
	PWO (Under Water)	80	-	-	80	
	Royal Navy Police	20	-	-	20	
	Submariner	-	300	-	300	
	Unspecified	-	-	-	-	
Engineer		820	450	270	1,550	1,610
	Air Engineer	-	-	270	270	
	Engineer (Information Systems)	50	-	-	50	
	Engineer (Info Systems Submarines)	-	~	-	~	
	Engineer (Training Manager)	200	-	-	200	
	Eng (Training Manager Submarines)	-	20	-	20	
	Marine Engineer	250	-	-	250	
	Marine Engineer (Submarines)	-	230	-	230	
	Weapons Engineer	330	-	-	330	
	Weapons Engineer (Submarines)	-	190	-	190	
	Unspecified	-	-	-	-	
Logistics		400	100	-	510	470
	Barrister	40	~	-	40	
	Chartered Management Accountant	20	~	-	20	
	Logistics	350	90	-	440	
	Logistics Family Services	~	-	-	~	
Medical		440	-	-	440	520
	Medical Officer	250	-	-	250	
	Medical Services	60	-	-	60	
	Dental Services	50	-	-	50	
	QARNNS	80	-	-	80	
Chaplain		60	-	-	60	60
Royal Marines		680	-	-	680	690
	Band Service	10	-	-	10	
	General Service	670	-	-	670	

* The Trained Strength shown in this table does not include the Transfer Trainee Strength, hence the slightly lower figures.

** Smoothed Planning Liability 2-15 has been used and scaled to the interpolated monthly DP15 total figure.

Dec-15 Edition.

2b

Trained Regular Royal Navy and Royal Marines Rating Strengths* and Liability** by Branch, Specialisation and Arm

Branch	Specialisation	GS	SM	FAA	Total	Liability	Surplus/Deficit
Total		16,930	3,100	3,610	23,650	24,280	-630
Warfare (General Service)		3,750	-	60	3,810	4,000	-200
	Warfare Specialist (WS)	110	-	-	110		
	WS (Above Water Tactical)	440	-	-	440		
	WS (Above Water Warfare)	440	-	-	440		
	WS (Under Water)	260	-	-	260		
	WS (Electronic Warfare)	360	-	-	360		
	Hydrographic/Meteorological (H/M)	10	-	-	10		
	H/M (Hydrographic)	100	-	-	100		
	H/M (Meteorological)	90	-	20	100		
	Mine Warfare	320	-	-	320		
	Diver	360	-	-	360		
	Seaman Specialist	620	-	-	620		
	Naval Airman (Photographer)	-	-	40	40		
	Physical Training Instructor	200	-	-	200		
	Royal Navy Police	230	-	-	230		
	Communications Technician	220	-	-	220		
Warfare (Submarine)		-	570	-	570	580	-10
	Coxswain (Submarines)	-	30	-	30		
	Warfare Spec (Sensors Submarines)	-	310	-	310		
	Warfare Spec (Tactical Submarines)	-	230	-	230		
Warfare (Air)		-	-	650	650	710	-60
	Aircrewman	-	-	90	90		
	Naval Airman (Aircraft Control)	-	-	100	100		
	Naval Airman (Aircraft Handler)	-	-	420	420		
	Royal Marines Aircrewman	-	-	40	40		
Engineer General Service		4,260	-	-	4,260	4,710	-440
	Marine Engineer Mechanic	100	-	-	100		
	Weapon Engineer Mechanic	30	-	-	30		
	Eng Technician (Marine Engineers)	1,980	-	-	1,980		
	Eng Technician (Weapon Engineers)	2,150	-	-	2,150		
Engineer Submariner		-	2,070	-	2,070	2,200	-130
	Eng Tech (Marine Eng Submarines)	-	1,070	-	1,070		
	Eng Tech (Weapon Eng Submarines)	-	980	-	980		
	Marine Engineer Mechanic	-	20	-	20		
	Weapon Engineer Mechanic	-	-	-	-		
Air Engineer		-	-	2,900	2,900	2,850	50
	Air Engineer Artificer	-	-	60	60		
	Air Engineer Mechanic	-	-	80	80		
	Air Engineer Technician	-	-	2,630	2,630		
	Naval Airman (Survival Equipment)	-	-	130	130		
Logistics		2,120	380	-	2,510	2,560	-50
	Caterer	90	10	-	100		
	Chef	510	140	-	650		
	Family Service	30	-	-	30		
	Steward	290	70	-	350		
	Supply Chain	480	100	-	580		
	Writer	640	70	-	720		
	Royal Marines Chef	80	-	-	80		
Medical		800	80	-	880	920	-50
	Dental Hygienist	10	-	-	10		
	Dental Surgery Assistant	70	-	-	70		
	Medical Assistant	440	80	-	520		
	Medical Technician	50	-	-	50		
	Naval Nurse	160	-	-	160		
	Royal Marines Medical Assistant	60	-	-	60		
Royal Marines (excl Chefs, Med Asst & Aircrewmen)		6,000	-	-	6,000	5,740	260
	Band Service	270	-	-	270		
	Bugler	70	-	-	70		
	General Service	5,660	-	-	5,660		

* The Trained Strength shown in this table does not include the Transfer Trainee Strength, hence the slightly lower figures.

** Smoothed Planning Liability 2-15 has been used and scaled to the interpolated monthly DP15 total figure.

**Royal Navy and Royal Marines FTRS Officer
(Regular and Non-Regular) Strengths by Branch,
Specialisation and Arm**

Branch	Specialisation	GS	SM	FAA	Total
Total		160	20	20	200
Warfare		60	10	20	90
	Air Traffic Control	-	-	~	~
	Aviation	-	-	~	~
	Communications	~	-	-	~
	Intelligence Officer	-	-	-	-
	Fighter Controller	-	-	-	-
	General Service Warfare	10	-	-	10
	Hydrographic/Meteorological	-	-	-	-
	Mine Clearance Diver	~	-	-	~
	Mine Warfare	10	-	-	10
	Observer	-	-	10	10
	Pilot	-	-	10	10
	RM Pilot	-	-	-	-
	Principal Warfare Officer (PWO)	10	-	-	10
	PWO (Above Water)	10	-	-	10
	PWO (Communications)	~	-	-	~
	PWO (Navigation)	~	-	-	~
	PWO (Under Water)	10	-	-	10
	Royal Navy Police	-	-	-	-
	Submariner	-	10	-	10
	Unspecified	~	~	-	~
Engineer		20	~	~	20
	Air Engineer	-	-	~	~
	Engineer (Information Systems)	~	-	-	~
	Engineer (Info Systems Submarines)	-	-	-	-
	Engineer (Training Manager)	10	-	-	10
	Eng (Training Manager Submarines)	-	-	-	-
	Marine Engineer	~	-	-	~
	Marine Engineer (Submarines)	-	~	-	~
	Weapons Engineer	~	-	-	~
	Weapons Engineer (Submarines)	-	~	-	~
	Unspecified	-	-	-	-
Logistics		20	-	-	20
	Barrister	-	-	-	-
	Chartered Management Accountant	-	-	-	-
	Logistics	20	-	-	20
	Logistics Family Services	-	-	-	-
Medical		~	-	-	~
	Medical Officer	~	-	-	~
	Medical Services	-	-	-	-
	Dental Services	-	-	-	-
	QARNNS	~	-	-	~
Chaplain		~	-	-	~
Careers		~	-	-	~
Royal Marines		10	-	-	10
	Band Service	-	-	-	-
	General Service	10	-	-	10
Royal Navy Reserves		50	-	-	50
Royal Marines Reserves		-	-	-	-

Royal Navy and Royal Marines FTRS Rating (Regular and Non-Regular) Strengths by Branch, Specialisation and Arm

Branch	Specialisation	GS	SM	FAA	Total
Total		380	60	20	460
Warfare (General Service)		80	-	10	90
	Warfare Specialist (WS)	-	-	-	-
	WS (Above Water Tactical)	10	-	-	10
	WS (Above Water Warfare)	20	-	-	20
	WS (Under Water)	~	-	-	~
	WS (Electronic Warfare)	~	-	-	~
	Hydrographic/Meteorological (H/M)	~	-	-	~
	H/M (Hydrographic)	-	-	-	-
	H/M (Meteorological)	-	-	~	~
	Mine Warfare	~	-	-	~
	Diver	10	-	-	10
	Seaman Specialist	20	-	-	20
	Weapons Analyst	~	-	-	~
	Naval Airman (Photographer)	-	-	~	~
	Physical Training Instructor	10	-	-	10
	Royal Navy Police	10	-	-	10
	Communications Technician	~	-	-	~
	Unspecified	-	-	-	-
Warfare (Submarine)		-	10	-	10
	Coxswain (Submarines)	-	~	-	~
	Warfare Specialist (Sensors Sub)	-	~	-	~
	Warfare Specialist (Tactical Sub)	-	~	-	~
Warfare (Air)		-	-	~	~
	Aircrewman	-	-	~	~
	Naval Airman (Aircraft Control)	-	-	~	~
	Naval Airman (Aircraft Handler)	-	-	~	~
	RM Aircrewman	-	-	-	-
	Unspecified	-	-	-	-
Engineer General Service		50	-	-	50
	Marine Engineer Mechanic	10	-	-	10
	Weapon Engineer Mechanic	10	-	-	10
	Eng Technician (Marine Engineer)	10	-	-	10
	Eng Technician (Weapon Engineer)	20	-	-	20
	Unspecified	-	-	-	-
Engineer Submariner		-	50	-	50
	Eng Technician (Marine Eng Sub)	-	30	-	30
	Eng Technician (Weapon Eng Sub)	-	20	-	20
	Marine Engineer Mechanic	-	~	-	~
	Weapon Engineer Mechanic	-	-	-	-
Air Engineer		-	-	10	10
	Air Engineer Artificer	-	-	~	~
	Air Engineer Mechanic	-	-	~	~
	Air Engineer Technician	-	-	~	~
	Naval Airman (Survival Equipment)	-	-	~	~
Logistics		30	~	-	30
	Caterer	10	~	-	10
	Chef	~	~	-	~
	Family Service	-	-	-	-
	Steward	~	-	-	~
	Supply Chain	10	~	-	10
	Writer	10	-	-	10
	Unspecified	-	-	-	-
Medical		~	-	-	~
	Dental Hygienist	-	-	-	-
	Dental Surgery Assistant	-	-	-	-
	Medical Assistant	~	-	-	~
	Medical Technician	-	-	-	-
	RM Medical Assistant	-	-	-	-
	Naval Nurse	~	-	-	~
	Unspecified	-	-	-	-
Royal Marines (excl Chefs, Med Asst & Aircrewmen)		40	-	-	40
	Band Service	-	-	-	-
	Bugler	-	-	-	-
	General Service	40	-	-	40
Royal Navy Reserves		~	-	-	~
Royal Marines Reserves		-	-	-	-
Careers		170	-	-	170

Trained* Regular Royal Navy and Royal Marine Officer Strengths and Liability
by Branch and Paid Rank*****

Branch		OF7 and above	OF-6	OF-5	OF-4	OF-3	OF-2	OF-1	Total
Total	Strength	40	80	280	1,020	2,030	2,140	200	5,770
	Liability	30	80	260	1,010	1,990	2,580	-	5,960
	Surplus / Deficit	~	~	10	10	40	-440	200	-180
Warfare									
	Strength	20	30	110	380	920	1,010	70	2,540
	Liability	20	30	100	370	870	1,210	-	2,610
	Surplus / Deficit	10	~	~	10	50	-200	70	-70
	% Surplus / Deficit	36.6%	-9.3%	3.1%	2.9%	5.7%	-16.4%	-	-2.5%
Engineer									
	Strength	10	20	80	270	560	580	20	1,550
	Liability	10	30	70	250	550	690	-	1,610
	Surplus / Deficit	-10	~	10	10	10	-110	20	-60
	% Surplus / Deficit	-45.2%	-8.2%	13.6%	5.6%	1.3%	-15.6%	-	-3.7%
Logistics									
	Strength	~	10	20	80	170	190	30	510
	Liability	-	10	20	90	160	200	-	470
	Surplus / Deficit	~	~	10	~	10	-10	30	40
	% Surplus / Deficit	-	70.7%	31.6%	-2.9%	6.1%	-5.1%	-	7.7%
Medical									
	Strength	~	~	30	120	170	110	10	440
	Liability	~	10	30	140	200	150	-	520
	Surplus / Deficit	~	~	~	-20	-30	-40	10	-80
	% Surplus / Deficit	2.5%	-62.3%	-7.7%	-18.0%	-20.4%	7.1%	-	-14.9%
Chaplain									
	Strength	~	~	-	50	-	-	-	60
	Liability	~	~	~	60	-	-	-	60
	Surplus / Deficit	~	~	~	~	-	-	-	~
	% Surplus / Deficit	2.5%	-	-100.0%	-2.3%	-	-	-	-2.1%
Royal Marines General Service									
	Strength	~	10	30	120	210	240	70	670
	Liability	~	10	30	110	210	330	-	680
	Surplus / Deficit	see note 1	~	~	10	~	-90	70	-10
	% Surplus / Deficit	see note 1	34.2%	-11.5%	8.1%	1.2%	-27.9%	-	-1.8%
Royal Marines Band Service									
	Strength	-	-	-	~	~	~	~	10
	Liability	-	-	-	~	~	~	-	10
	Surplus / Deficit	-	-	-	~	~	~	~	~
	% Surplus / Deficit	-	-	-	2.5%	29.8%	-17.2%	-	34.6%
Careers/Other									
	Strength	-	-	-	-	-	-	-	-
	Liability	-	-	-	-	-	-	-	-
	Surplus / Deficit	-	-	-	-	-	-	-	-
	% Surplus / Deficit	-	-	-	-	-	-	-	-
Unspecified									
	Strength	-	-	-	-	-	-	-	-
	Liability	-	-	-	-	-	-	-	-

Dec-15 Edition.

* The Trained Strength shown in this table does not include the Transfer Trainee Strength, hence the slightly lower figures.

** Smoothed Planning Liability 2-15 has been used and scaled to the interpolated monthly DP15 total figure.

*** Figures exclude FTRS personnel in regular posts.

¹ At OF7+ RM GS Officers are assigned under the same regime as their RN counterparts, occupying common appointments where liability is attributable across the RN/RM OF7+ population.

Trained* Regular Royal Navy and Royal Marines Rating Strengths and Liability
by Branch and Paid Rank*****

Branch		OR-9	OR-8 ³	OR-7	OR-6	OR-4	OR-3	OR-2	Total
Total									
	Strength	880	440	2,820	3,590	5,510	690	9,730	23,650
	Liability	890	220	2,960	4,460	6,110	see note 2 690	9,650	24,280
	Surplus / Deficit	-20	220	-140	-870	-600	690	80	-630
Warfare (General Service)									
	Strength	140	~	480	660	980	-	1,540	3,810
	Liability	130	-	480	780	1,180	-	1,440	4,000
	Surplus / Deficit	10	~	~	-120	-190	-	100	-200
	% Surplus / Deficit	9.5%	-	0.2%	-15.2%	-16.6%	-	7.1%	-4.9%
Warfare (Submarine)									
	Strength	30	-	80	80	110	-	270	570
	Liability	30	-	80	90	130	-	260	580
	Surplus / Deficit	~	-	~	-10	-10	-	10	-10
	% Surplus / Deficit	18.8%	-	-5.4%	-8.2%	-9.8%	-	2.3%	-2.3%
Warfare (Air)									
	Strength	20	-	70	140	150	-	270	650
	Liability	30	-	90	170	240	-	200	710
	Surplus / Deficit	~	-	-10	-30	-80	-	70	-60
	% Surplus / Deficit	-10.2%	-	-15.3%	-19.2%	-35.5%	-	35.2%	-8.8%
Engineering (General Service)									
	Strength	310	40	670	670	930	-	1,630	4,260
	Liability	310	-	780	1,030	1,090	-	1,500	4,710
	Surplus / Deficit	~	40	-100	-360	-150	-	140	-440
	% Surplus / Deficit	-0.6%	-	-13.4%	-35.1%	-14.2%	-	9.1%	-9.4%
Engineering (Submarine)									
	Strength	90	140	330	270	470	-	760	2,070
	Liability	140	-	390	530	500	-	640	2,200
	Surplus / Deficit	-50	140	-50	-260	-30	-	130	-130
	% Surplus / Deficit	-34.7%	-	-13.9%	-49.5%	-6.3%	-	20.1%	-5.9%
Engineering (Air)									
	Strength	100	10	440	620	730	-	1,000	2,900
	Liability	90	-	450	610	740	-	970	2,850
	Surplus / Deficit	~	10	-10	10	-10	-	40	50
	% Surplus / Deficit	5.2%	-	-1.5%	1.1%	-0.8%	-	3.7%	1.6%
Logistics									
	Strength	60	~	230	400	740	10	1,070	2,510
	Liability	60	-	220	420	760	-	1,090	2,560
	Surplus / Deficit	~	~	10	-30	-20	10	-20	-50
	% Surplus / Deficit	6.8%	-	4.7%	-5.9%	-3.2%	-	-2.2%	-2.0%
Medical									
	Strength	30	~	120	160	270	~	300	880
	Liability	30	-	120	190	320	-	260	920
	Surplus / Deficit	~	~	-10	-30	-50	~	40	-40
	% Surplus / Deficit	-11.4%	-	-4.4%	-15.8%	-15.0%	-	13.4%	-4.9%
Royal Marines General Service Excludes RM Med Assistant, RM Aircrewman, RM Band, RM Careers Service and RM Chefs									
	Strength	80	230	370	550	1,050	680	2,700	5,660
	Liability	70	210	340	580	1,100	see note 2 680	3,100	5,410
	Surplus / Deficit	10	20	30	-30	-50	-	-410	250
	% Surplus / Deficit	17.9%	8.4%	8.1%	-5.4%	-4.5%	-	-13.1%	4.6%
Royal Marines Band Service									
	Strength	10	10	30	50	60	-	180	340
	Liability	~	10	20	50	60	-	190	330
	Surplus / Deficit	~	~	10	~	~	-	~	10
	% Surplus / Deficit	45.2%	14.8%	30.3%	-7.4%	7.0%	-	-1.1%	2.8%
Unspecified									
	Strength	-	-	-	-	-	-	-	-
CAPPS									
	Liability	-	-	-	-	-	-	-	-

Dec-15 Edition.

* The Trained Strength shown in this table does not include the Transfer Trainee Strength, hence the slightly lower figures.

** Smoothed Planning Liability 2-15 has been used and scaled to the interpolated monthly DP15 total figure.

*** Figures exclude FTRS personnel in regular posts.

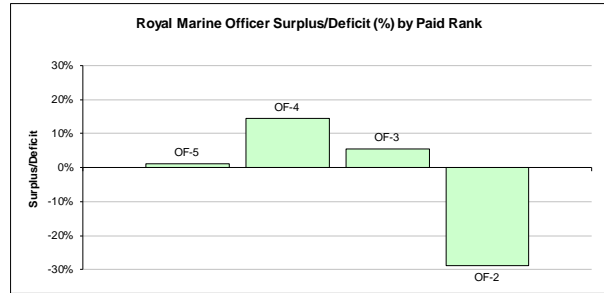
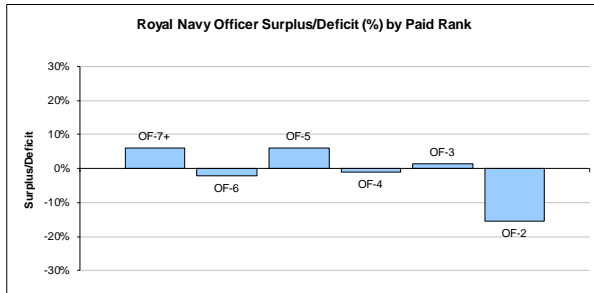
² Royal Marines are the only part of the RN/RM Service to currently contain OR3 strength.

As no separate liability for OR3 is produced for the RN/RM, the liability for OR2 also includes OR3.

³ The latest liability (PL2-15) no longer includes RN OR8. This rank will still be reflected in RN strength.

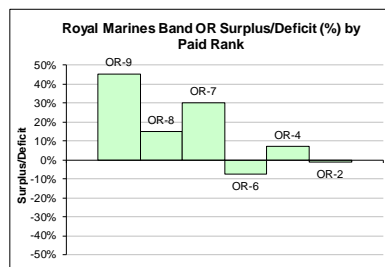
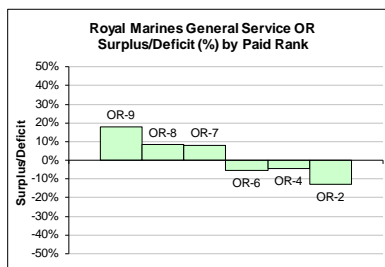
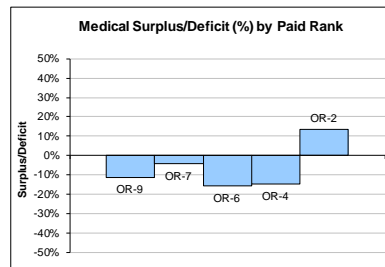
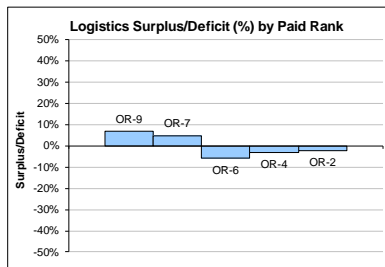
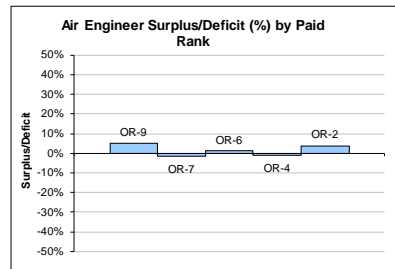
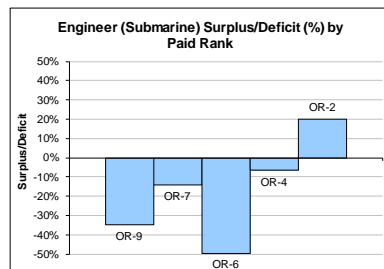
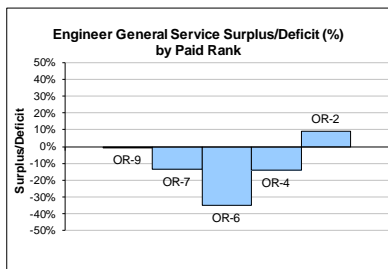
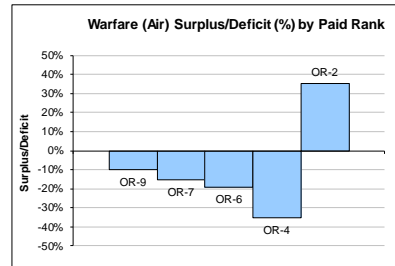
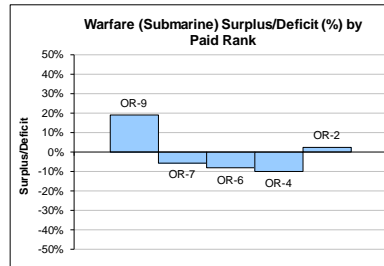
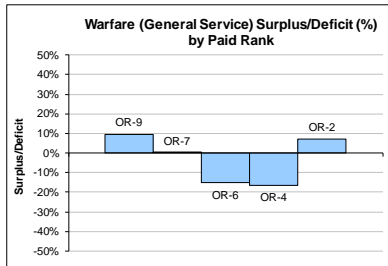
3c

Trained Regular Royal Navy and Royal Marine Officer Surplus/Deficit by Paid Rank



3d

Trained Regular Royal Navy and Royal Marine Rating Surplus/Deficit by Paid Rank



3e Royal Navy and Royal Marine Officer FTRS (Regular and Non-Regular) Strength by Branch and Paid Rank								
Branch	OF7+	OF6	OF5	OF4	OF3	OF2	OF1	Total
Total	-	~	10	50	100	40	~	200
Warfare	-	-	~	20	50	10	-	90
Engineer	-	-	~	10	10	~	-	20
Logistics	-	~	~	~	10	-	~	20
Medical	-	-	-	~	~	-	-	~
Medical Services	-	-	-	-	-	-	-	-
Dental	-	-	-	-	-	-	-	-
QARNNS	-	-	-	-	-	~	-	~
Chaplain	-	-	-	~	-	-	-	~
Royal Marines General Service	-	-	~	~	10	~	-	10
Royal Marines Band Service	-	-	-	-	-	-	-	-
Royal Navy Reserves	-	-	~	10	30	10	-	50
Royal Marines Reserves	-	-	-	-	-	-	-	-
Careers/Other	-	-	-	-	-	~	-	~

Dec-15 Edition.

3f Royal Navy and Royal Marine Rating FTRS (Regular and Non-Regular) Strength by Branch and Paid Rank								
Branch	OR9	OR8	OR7	OR6	OR4	OR3	OR2	Total
Total	60	10	190	160	20	~	10	460
Warfare (General Service)	10	~	40	30	10	-	~	90
Warfare (Submarine)	~	-	~	~	~	-	-	10
Warfare (Air)	-	-	~	~	-	-	-	~
Engineering (General Service)	10	~	30	10	~	-	-	50
Engineering (Submarine)	~	~	20	10	~	-	-	50
Engineering (Air)	~	-	~	~	-	-	-	10
Logistics	~	-	20	10	~	-	-	30
Medical	~	-	-	~	~	-	-	~
Royal Marines General Service	~	~	20	10	~	~	10	40
<i>Excludes RM Med Assistant, RM Aircrewman, RM Band and RM Careers Service</i>								
Royal Marines Band Service	-	-	-	-	-	-	-	-
Royal Navy Reserves	~	-	~	~	-	-	-	~
Royal Marines Reserves	-	-	-	-	-	-	-	-
Career	30	~	50	80	-	-	-	170
Unspecified	-	-	-	-	-	-	-	-

4a (GS) Trained* Regular Royal Navy and Royal Marine Officer General Service Strengths by Branch and Specialisation and Paid Rank

Branch	Specialisation	OF-7 and above	OF-6	OF-5	OF-4	OF-3	OF-2	OF-1	Total
Total		20	60	180	680	1,330	1,320	170	3,740
Warfare		20	20	50	190	490	520	40	1,330
	Communications	-	-	-	~	10	20	-	20
	Intelligence Officer	-	-	-	10	50	70	~	130
	Fighter Controller	-	-	-	-	~	30	-	40
	General Service Warfare	-	-	-	-	20	230	30	280
	Hydrographic/Meteorological	-	-	~	30	60	80	~	160
	Mine Clearance Diver	-	-	-	~	30	40	~	80
	Mine Warfare	-	-	-	-	~	20	-	20
	Principal Warfare Officer (PWO)	~	-	~	30	160	20	-	220
	PWO (Above Water)	~	10	30	60	60	-	-	150
	PWO (Communications)	~	~	~	20	30	~	-	60
	PWO (Navigation)	~	~	~	20	30	10	-	70
	PWO (Under Water)	~	~	10	30	30	-	-	80
	Royal Navy Police	-	-	-	~	10	10	~	20
	Unspecified	-	-	-	-	-	-	-	-
Engineer		~	10	40	140	320	290	20	820
	Engineer (Information Systems)	-	-	~	10	30	10	-	50
	Engineer (Training Manager)	-	~	10	30	80	80	~	200
	Marine Engineer	~	~	20	50	100	80	10	250
	Weapons Engineer	-	10	20	60	120	120	10	330
	Unspecified	-	-	-	-	-	-	-	-
Logistics		-	10	20	60	140	150	30	400
	Barrister	-	~	~	10	20	~	-	40
	Chartered Management Accountant	-	-	~	~	10	-	-	20
	Logistics	-	~	10	40	110	150	30	350
	Logistics Family Services	-	-	-	-	~	~	-	~
Medical		~	~	30	120	170	110	10	440
	Medical Officer	~	~	20	80	100	50	-	250
	Medical Services	-	-	~	10	20	30	~	60
	Dental Services	-	-	10	20	20	10	-	50
	QARNNS	-	~	~	10	30	30	10	80
Chaplain		~	~	-	50	-	-	-	60
Other		-	-	-	-	-	-	-	-
Royal Marines		~	10	30	120	210	240	70	680
	Band Service	-	-	-	~	~	~	~	10
	General Service	~	10	30	120	210	240	70	670

* The Trained Strength shown in this table does not include the Transfer Trainee Strength, hence the slightly lower figures.

Dec-15 Edition.

4a (SM) Trained* Regular Royal Navy and Royal Marines Officer Submarine Strengths by Branch and Specialisation and Paid Rank

Branch	Specialisation	OF-7 and above	OF-6	OF-5	OF-4	OF-3	OF-2	OF-1	Total
Total		10	10	50	150	260	350	10	860
Warfare		~	10	20	50	90	130	10	300
	Submariner	~	10	20	50	90	130	10	300
Engineer		10	10	30	80	140	190	~	450
	Engineer (Info Systems Submarines)	-	-	-	-	~	~	-	~
	Engineer (Training Mgr Submarines)	-	-	~	10	~	10	-	20
	Marine Engineer (Submarines)	~	~	10	40	70	100	-	230
	Weapons Engineer (Submarines)	~	~	20	30	60	80	~	190
	Unspecified	-	-	-	-	-	-	-	-
Logistics		~	~	~	30	30	40	-	100
	Barrister	-	-	-	~	~	-	-	~
	Chartered Management Accountant	-	-	-	~	~	-	-	~
	Logistics	~	~	~	20	30	40	-	90
	Logistics Family Services	-	-	-	-	-	-	-	-
Other		-	-	-	-	-	-	-	-

* The Trained Strength shown in this table does not include the Transfer Trainee Strength, hence the slightly lower figures.

4a (FAA) Trained* Regular Royal Navy and Royal Marine Officer Fleet Air Arm Strengths by Branch and Specialisation and Paid Rank

Branch	Specialisation	OF-7 and above	OF-6	OF-5	OF-4	OF-3	OF-2	OF-1	Total
Total		~	10	50	190	440	460	20	1,180
Warfare		~	10	40	140	340	360	10	900
	Air Traffic Control	-	-	~	~	20	40	~	70
	Aviation	-	-	-	~	10	20	10	40
	Observer	~	~	10	70	120	110	~	310
	Pilot	~	~	20	60	170	190	-	450
	RM Pilot	-	-	~	10	20	10	-	40
	Unspecified	-	-	-	-	-	-	-	-
Engineer		-	~	10	50	100	100	10	270
	Air Engineer	-	~	10	50	100	100	10	270
Other		-	-	-	-	-	-	-	-

* The Trained Strength shown in this table does not include the Transfer Trainee Strength, hence the slightly lower figures.

Dec-15 Edition.

4b (GS)
**Trained* Regular Rating General Service Strengths
by Branch and Specialisation and Paid Rank**

Branch	Specialisation	OR-9	OR-8	OR-7	OR-6	OR-4	OR-3	OR-2	Total
Total		630	290	1,830	2,390	3,880	690	7,230	16,930
Warfare		140	~	460	650	960	-	1,540	3,750
	Warfare Specialist (WS)	-	-	-	-	-	-	110	110
	WS (Above Water Tactical)	20	-	70	100	120	-	140	440
	WS (Above Water Warfare)	20	-	70	80	110	-	150	440
	WS (Under Water)	10	-	30	50	60	-	110	260
	WS (Electronic Warfare)	10	-	40	60	90	-	170	360
	Hydrographic/Meteorological (H/M)	-	-	-	-	-	-	10	10
	H/M (Hydrographic)	~	-	10	10	20	-	50	100
	H/M (Meteorological)	-	-	~	10	20	-	50	90
	Mine Warfare	10	-	20	50	70	-	170	320
	Diver	10	-	20	50	90	-	180	360
	Seaman Specialist	20	-	40	60	120	-	390	620
	Physical Training Instructor	10	-	20	60	100	-	-	200
	Royal Navy Police	10	-	40	80	100	-	-	230
	Communications Technician	20	~	90	40	50	-	20	220
	Unspecified	-	-	-	-	-	-	-	-
Engineer		310	40	670	670	930	-	1,630	4,260
	Marine Engineer Mechanic	30	-	50	20	-	-	-	100
	Weapon Engineer Mechanic	10	-	20	10	-	-	-	30
	Eng Technician (Marine Engineer)	150	10	240	310	460	-	800	1,980
	Eng Technician (Weapon Engineer)	120	30	360	330	470	-	830	2,150
	Unspecified	-	-	-	-	-	-	-	-
Logistics		60	~	200	330	640	10	880	2,120
	Caterer	20	-	40	20	-	-	-	90
	Steward	-	-	~	20	100	-	170	290
	Chef	~	-	20	70	170	-	250	510
	Writer	10	-	70	110	200	-	260	640
	Supply Chain	20	-	40	80	160	-	180	480
	Family Services	~	-	10	20	-	-	-	30
	Royal Marine Chef	~	~	10	20	20	10	20	80
Medical		30	~	100	140	230	~	290	800
	Dental Hygienist	-	-	~	~	10	-	-	10
	Dental Surgery Assistant	~	-	~	10	30	-	40	70
	Medical Assistant	20	-	50	60	100	-	220	440
	Naval Nurse	~	-	30	40	70	-	~	160
	Royal Marines Medical Assistant	~	-	-	10	10	~	40	60
	Medical Technician	~	~	20	20	20	-	~	50
Other		-	-	-	-	-	-	-	-
Royal Marines		90	240	400	600	1,110	680	2,880	6,000
	Royal Marines Band Service	10	10	30	50	60	-	180	340
	Royal Marines General Service	80	230	370	550	1,050	680	2,700	5,660

* The Trained Strength shown in this table does not include the Transfer Trainee Strength, hence the slightly lower figures.

4b (SM)**Trained* Regular Rating Submarine Strengths
by Branch and Specialisation and Paid Rank**

Branch	Specialisation	OR-9	OR-8	OR-7	OR-6	OR-4	OR-3	OR-2	Total
Total		120	140	450	430	720	-	1,230	3,100
Warfare		30	-	80	80	110	-	270	570
	Coxswain (Submarines)	10	-	20	-	-	-	-	30
	Warfare Spec (Sensors Submarine)	10	-	30	50	70	-	140	310
	Warfare Spec (Tactical Submarine)	10	-	30	30	40	-	120	230
	Unspecified	-	-	-	-	-	-	-	-
Engineer		90	140	330	270	470	-	760	2,070
	Marine Engineer Mechanic	-	-	20	-	-	-	-	20
	Weapon Engineer Mechanic	-	-	-	-	-	-	-	-
	Eng Technician (Marine Engineer)	50	90	180	120	230	-	390	1,070
	Eng Technician (Weapon Engineer)	40	50	130	150	240	-	380	980
	Unspecified	-	-	-	-	-	-	-	-
Logistics		-	-	30	70	100	-	190	380
	Caterer	-	-	10	-	-	-	-	10
	Steward	-	-	-	10	20	-	40	70
	Chef	-	-	10	30	40	-	70	140
	Writer	-	-	10	20	20	-	30	70
	Supply Chain	-	-	10	10	20	-	50	100
	Family Services	-	-	-	-	-	-	-	-
Medical		-	-	10	20	40	-	10	80
	Medical Assistant	-	-	10	20	40	-	10	80
Other		-	-	-	-	-	-	-	-

* The Trained Strength shown in this table does not include the Transfer Trainee Strength, hence the slightly lower figures.

4b (FAA)**Trained* Regular Rating Fleet Air Arm Strengths
by Branch and Specialisation and Paid Rank**

Branch	Specialisation	OR-9	OR-8	OR-7	OR-6	OR-4	OR-3	OR-2	Total
Total		120	10	530	770	910	-	1,270	3,610
Warfare (Air)		20	-	70	140	150	-	270	650
	Aircrewmen	10	-	20	40	20	-	-	90
	Naval Airman (Aircraft Control)	10	-	20	30	30	-	20	100
	Naval Airman (Aircraft Handler)	10	-	30	50	90	-	250	420
	RM Aircrewmen	-	-	10	10	10	-	-	40
	Unspecified	-	-	-	-	-	-	-	-
Warfare (General Service)		-	-	20	20	20	-	-	60
	H/M (Meteorological)	-	-	10	-	-	-	-	20
	Naval Airman (Photographer)	-	-	10	10	20	-	-	40
Engineer		100	10	440	620	730	-	1,000	2,900
	Air Engineer Artificer	-	-	60	-	-	-	-	60
	Air Engineer Mechanic	10	-	30	40	-	-	-	80
	Air Engineer Technician	80	10	330	550	690	-	960	2,630
	Naval Airman (Survival Equipment)	-	-	10	20	50	-	40	130
Other		-	-	-	-	-	-	-	-

Dec-15 Edition.

* The Trained Strength shown in this table does not include the Transfer Trainee Strength, hence the slightly lower figures.

5a

Untrained Regular Royal Navy and Royal Marines Officer Strengths by Branch and Paid Rank

	OF4+	OF3	OF2	OF1	OFD	Total
Total	~	~	170	600	180	960
Warfare	-	-	100	300	110	500
Engineer	-	~	40	140	50	220
Logistics	-	-	~	20	20	50
Medical	-	-	40	50	-	90
Chaplain	~	-	-	-	-	~
No Specialisation	-	-	-	-	-	-
RM General Service	-	-	-	100	-	100
RM Band Service	-	-	-	~	-	~
Careers/Other	-	-	-	-	-	-

Dec-15 Edition.

Note: Midshipmen are counted as OF-D

5b Untrained Regular Royal Navy and Royal Marine Rating Strengths by Branch and Paid Rank					
	OR6+	OR4	OR3	OR2	Total
Total	-	-	-	2,100	2,100
Warfare (General Service)	-	-	-	320	320
Warfare Specialist	-	-	-	60	60
Warfare Specialist (Above Water Tactical)	-	-	-	30	30
Hydrographic/Meteorological	-	-	-	10	10
H/M (Hydrographic)	-	-	-	~	~
H/M (Meteorological)	-	-	-	-	-
Mine Warfare	-	-	-	40	40
Diver	-	-	-	40	40
Seaman Specialist	-	-	-	120	120
Naval Airman (Photographer)	-	-	-	-	-
Communications Technician	-	-	-	30	30
Unspecified	-	-	-	-	-
Warfare (Submarine)	-	-	-	40	40
Warfare Specialist (Sensors Submarine)	-	-	-	20	20
Warfare Specialist (Tactical Submarine)	-	-	-	20	20
Unspecified	-	-	-	-	-
Warfare (Air)	-	-	-	70	70
Aircrewman	-	-	-	20	20
Naval Airman (Aircraft Control)	-	-	-	20	20
Naval Airman (Aircraft Handler)	-	-	-	40	40
Unspecified	-	-	-	-	-
Engineer General Service	-	-	-	390	390
Eng Technician (Marine Engineer)	-	-	-	210	210
Eng Technician (Weapon Engineer)	-	-	-	180	180
Unspecified	-	-	-	-	-
Engineer Submariner	-	-	-	200	200
Eng Technician (Marine Engineer Sub)	-	-	-	130	130
Eng Technician (Weapon Engineer Sub)	-	-	-	80	80
Unspecified	-	-	-	-	-
Air Engineer	-	-	-	270	270
Air Engineer Technician	-	-	-	250	250
Naval Airman (Survival Equipment)	-	-	-	20	20
Unspecified	-	-	-	-	-
Logistics	-	-	-	120	120
Chef	-	-	-	50	50
Steward	-	-	-	20	20
Supply Chain	-	-	-	20	20
Writer	-	-	-	30	30
Unspecified	-	-	-	~	~
Medical	-	-	-	80	80
Dental Surgery Assistant	-	-	-	~	~
Medical Assistant	-	-	-	60	60
Medical Technician	-	-	-	~	~
Naval Nurse	-	-	-	20	20
Unspecified	-	-	-	-	-
Royal Marines General Service	-	-	-	530	530
Royal Marines Band Service	-	-	-	60	60
Band	-	-	-	60	60
Bugler	-	-	-	10	10
Unspecified	-	-	-	-	-
Unknown	-	-	-	-	-

6 Trained* Regular Royal Navy and Royal Marine Strength by Top Level Budget and Paid Rank

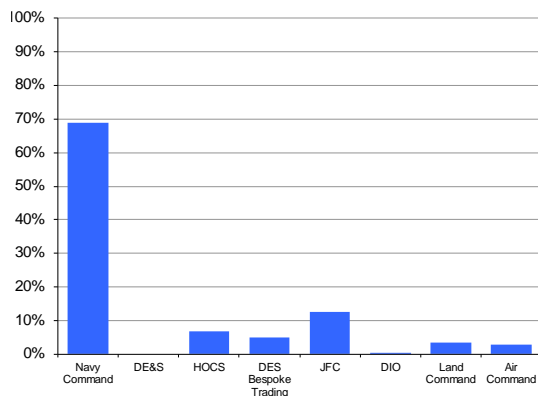
Officers

TLB	OF9	OF8	OF7	OF6	OF5	OF4	OF3	OF2	OF1	Total	% of Total Trained Strength
Total	~	10	30	80	280	1,020	2,030	2,140	200	5,770	100.0%
Navy Command	~	~	20	40	120	540	1,430	1,660	170	3,980	69.0%
DE&S	-	-	-	-	-	-	-	-	-	-	0.0%
HOCS	-	~	~	20	60	160	120	30	~	400	6.9%
DES Bespoke Trading	-	~	~	10	30	70	90	90	~	290	5.1%
JFC	-	~	~	20	60	200	250	180	20	730	12.6%
DIO	-	-	-	-	~	~	~	-	-	~	0.1%
Land Command	-	-	-	-	~	20	80	90	10	200	3.4%
Air Command	-	-	-	~	~	20	60	80	~	170	2.9%

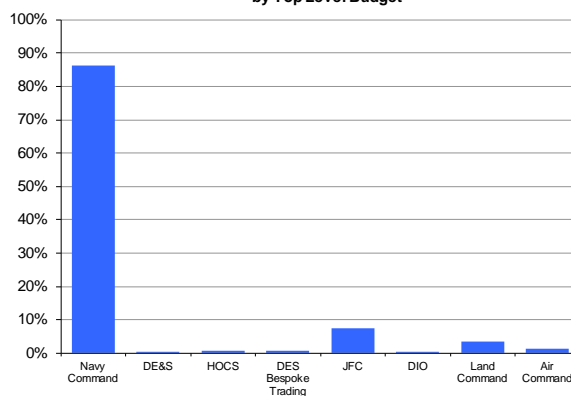
Ratings

TLB	OR9	OR8	OR7	OR6	OR4	OR3	OR2	Total	Trained
Total	880	440	2,820	3,590	5,510	690	9,730	23,650	100.0%
Navy Command	690	360	2,150	2,930	4,750	550	9,010	20,440	86.4%
DE&S	-	-	-	~	-	-	-	~	0.0%
HOCS	20	~	70	50	40	-	20	190	0.8%
DES Bespoke Trading	60	20	60	~	~	-	~	150	0.6%
JFC	60	40	300	300	460	120	440	1,730	7.3%
DIO	-	-	-	-	~	-	-	~	0.0%
Land Command	20	~	130	190	180	20	250	790	3.3%
Air Command	20	10	110	110	70	-	20	340	1.4%

Trained* Regular Royal Navy and Royal Marine Officer strength by Top Level Budget



Trained* Regular Royal Navy and Royal Marine Ratings strength by Top Level Budget



* The Trained Strength shown in this table does not include the Transfer Trainee Strength, hence the slightly lower figures.

Dec-15 Edition.

7a Trained Regular Royal Navy and Royal Marines Length of Service by Rank

Royal Navy Officers

Rank		Average LOS on Promotion	Current Average LOS	Average LOS on Exit			
				Overall	VO	TX	OW
OF7+	Admiral	30.2	33.4	35.0	37.0	34.8	N/A
OF6	Commodore	28.1	31.0	34.4	N/A	34.8	N/A
OF5	Captain	25.2	29.3	32.3	31.5	33.9	N/A
OF4	Commander	19.3	23.3	27.4	26.2	30.3	27.3
OF3	Lt Commander	13.3	16.5	19.0	17.7	22.6	14.9
OF2	Lieutenant	7.2	10.8	13.1	12.8	14.9	11.5
OF1	Sub-Lieutenant	N/A	8.7	6.0	N/A	N/A	6.0
OFD	Midshipman	N/A	N/A	N/A	N/A	N/A	N/A
Overall		15.7	16.3	19.8	18.4	24.1	15.1

Royal Marine Officers

Rank		Average LOS on Promotion	Current Average LOS	Average LOS on Exit			
				Overall	VO	TX	OW
OF7+	Major General and Above	N/A	32.8	34.1	N/A	34.1	N/A
OF6	Brigadier	26.4	29.7	31.4	29.3	35.6	N/A
OF5	Colonel	25.3	26.7	29.7	27.2	34.6	N/A
OF4	Lt Colonel	17.7	21.0	29.3	27.7	33.4	N/A
OF3	Major	16.1	15.6	15.9	14.2	17.3	21.1
OF2	Captain	6.8	10.7	14.0	12.5	18.3	12.8
OF1	Lieutenant	3.9	9.6	2.0	N/A	N/A	2.0
Overall		16.3	15.1	19.0	17.7	23.9	13.5

Royal Navy Ratings

Rank		Average LOS on Promotion	Current Average LOS	Average LOS on Exit				
				Overall	VO	TX	OW	PTO
OR-9	Warrant Officer 1st Class	26.3	28.7	29.7	28.4	32.0	N/A	N/A
OR-8	Warrant Officer 2nd Class	21.0	25.0	27.8	27.1	29.0	N/A	16.2
OR-7	Chief Petty Officer	19.4	20.9	22.7	22.0	25.5	19.7	15.6
OR-6	Petty Officer	12.3	16.0	18.9	18.1	23.5	16.2	12.5
OR-4	Leading Hand	6.7	10.3	12.3	11.1	18.9	12.8	8.3
OR-2	Able Rating	N/A	4.3	6.4	6.7	6.9	5.8	3.5
Overall		13.1	11.4	13.2	12.1	22.9	8.9	12.1

Royal Marine Ratings

Rank		Average LOS on Promotion	Current Average LOS	Average LOS on Exit				
				Overall	VO	TX	OW	PTO
OR-9	Warrant Officer 1st Class	24.8	27.7	28.5	26.9	29.5	N/A	26.7
OR-8	Warrant Officer 2nd Class	19.3	24.2	23.8	24.4	24.3	23.6	21.0
OR-7	Colour Sergeant	16.9	20.2	22.8	24.7	26.5	26.5	17.4
OR-6	Sergeant	12.9	15.1	16.5	14.3	21.4	15.3	13.2
OR-4	Corporal	8.4	10.6	12.4	9.6	21.6	13.5	13.0
OR-3	Lance Corporal	N/A	6.5	N/A	N/A	N/A	N/A	N/A
OR-2	Marine	N/A	4.8	7.4	6.7	21.9	7.8	1.8
Overall		12.5	9.3	10.4	8.1	23.8	9.9	17.3

Notes

- 1 Flows data are for the last 12 months
- 2 LOS is taken from entry into the RN/RM
- 3 RN Rating and RM Other Rank exits include Promotion to Officer
- 4 Paid rank has been used for the current average LOS, but all other calculations feature substantive rank

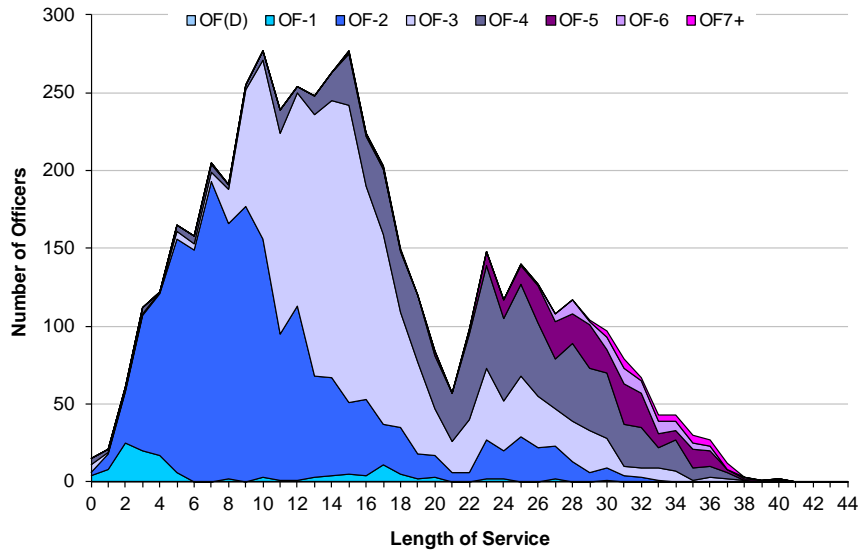
Key

VO Voluntary Outflow
TX Time Expiry
OW Other Wastage
PTO Promotion to Officer

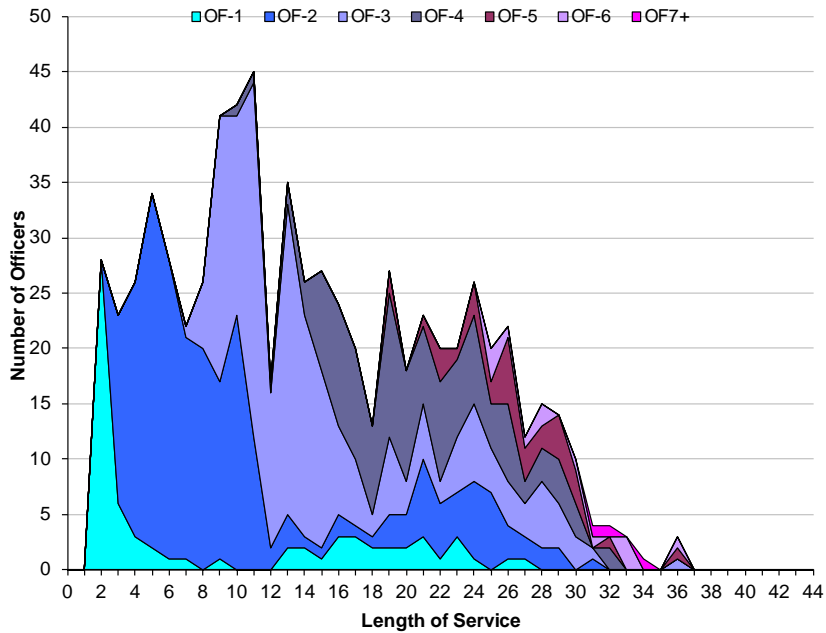
7b

Trained Regular Officer Length of Service by Paid Rank

Royal Navy Officer Strength by Rank and Length of Service



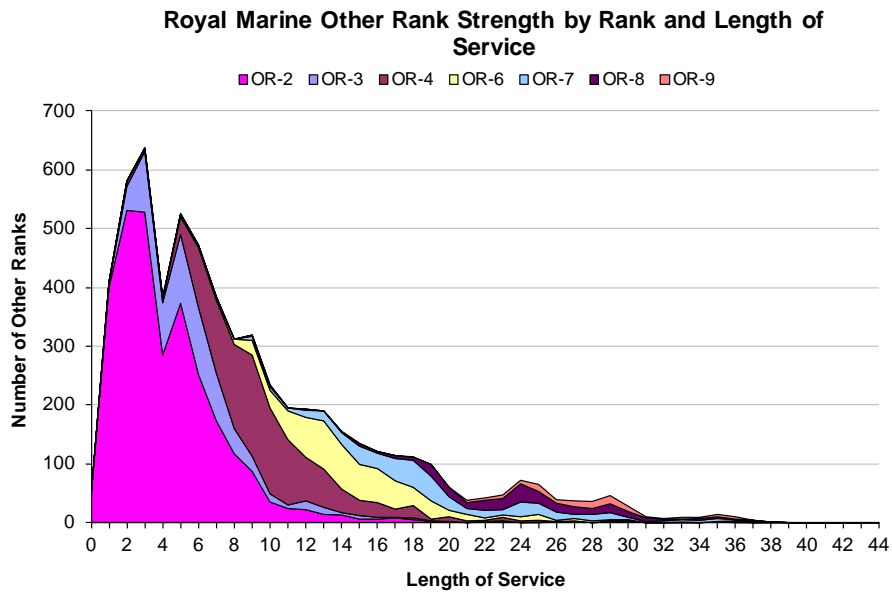
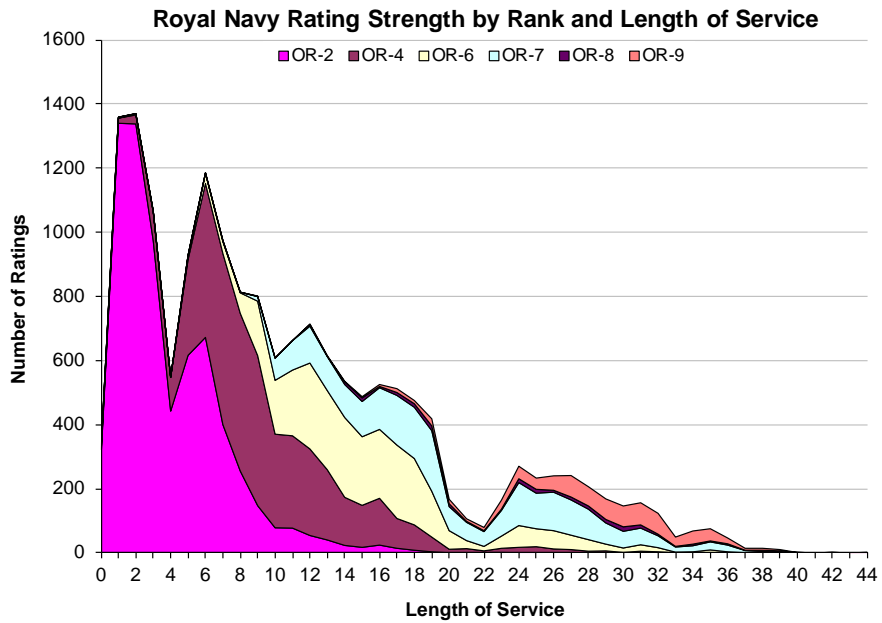
Royal Marine Officer Strength by Rank and Length of Service



Dec-15 Edition.

7c

Trained Regular RN Rating and RM Other Ranks Length of Service by Paid Rank



Dec-15 Edition.

		2011/2012		2012/2013		2013/2014		2014/2015		12 Mths to 1st Dec 15		Actual Nov 15
		Nos.	%	Nos.	%	Nos.	%	Nos.	%	Nos.	%	
Total Officers		510	7.9%	540	8.5%	460	7.6%	430	7.2%	460	7.8%	30
Royal Navy Officers												
	Total	450	8.0%	460	8.3%	410	7.6%	380	7.3%	390	7.7%	20
	Voluntary Outflow	180	3.2%	200	3.7%	230	4.3%	230	4.4%	240	4.6%	10
	Other Wastage	40	0.7%	40	0.7%	30	0.6%	30	0.7%	40	0.7%	~
	Time Expiry	170	3.0%	150	2.7%	140	2.7%	120	2.2%	120	2.3%	~
	Redundancy	60	1.1%	70	1.2%	~	0.1%	~	0.0%	10	0.2%	-
Royal Marine Officers												
	Total	60	7.6%	80	10.5%	60	7.4%	50	6.7%	60	8.4%	10
	Voluntary Outflow	20	3.0%	30	4.1%	40	5.0%	20	2.9%	40	4.8%	~
	Other Wastage	10	1.0%	10	1.7%	10	1.1%	10	1.7%	10	1.1%	~
	Time Expiry	30	3.3%	20	2.9%	10	1.3%	20	2.0%	20	2.5%	~
	Redundancy	~	0.3%	10	1.8%	-	0.0%	-	0.0%	-	0.0%	-
Warfare												
	Total	210	7.5%	190	7.1%	200	7.4%	190	7.4%	190	7.5%	10
	Voluntary Outflow	80	3.0%	90	3.1%	100	3.8%	120	4.4%	110	4.5%	10
	Other Wastage	20	0.8%	20	0.7%	20	0.8%	20	0.8%	10	0.6%	~
	Time Expiry	80	2.8%	70	2.7%	70	2.8%	60	2.2%	60	2.5%	~
	Redundancy	20	0.8%	20	0.5%	~	0.0%	-	0.0%	-	0.0%	-
Engineer												
	Total	140	7.7%	150	8.6%	140	8.7%	130	8.0%	130	8.2%	10
	Voluntary Outflow	60	3.2%	90	5.0%	100	5.7%	80	4.6%	90	5.4%	10
	Other Wastage	10	0.6%	10	0.6%	~	0.3%	10	0.5%	10	0.7%	~
	Time Expiry	50	2.9%	50	2.8%	40	2.6%	50	2.8%	30	2.1%	~
	Redundancy	20	1.0%	~	0.2%	-	0.0%	-	0.0%	-	0.0%	-
Logistics												
	Total	60	10.1%	70	12.7%	20	4.8%	30	5.7%	30	5.4%	~
	Voluntary Outflow	20	2.7%	10	2.6%	10	2.6%	20	3.9%	20	3.0%	~
	Other Wastage	~	0.3%	~	0.7%	~	0.4%	~	0.2%	~	0.2%	~
	Time Expiry	20	2.7%	10	1.3%	10	1.6%	10	1.6%	10	2.2%	~
	Redundancy	20	4.3%	40	8.0%	~	0.2%	-	0.0%	-	0.0%	~
Medical												
	Total	40	15.2%	40	8.2%	40	7.6%	30	6.1%	50	9.5%	~
	Voluntary Outflow	20	6.7%	20	3.5%	20	3.0%	20	3.9%	20	4.8%	~
	Other Wastage	~	1.1%	10	1.1%	10	1.4%	~	1.0%	10	1.8%	~
	Time Expiry	20	7.4%	10	2.6%	10	2.6%	~	0.8%	10	1.4%	~
	Redundancy	-	0.0%	~	0.9%	~	0.6%	~	0.4%	10	1.6%	~
Chaplain												
	Total	10	17.0%	~	5.3%	~	7.0%	~	7.0%	~	5.3%	~
	Voluntary Outflow	~	6.8%	~	1.8%	~	3.5%	~	3.5%	~	3.6%	~
	Other Wastage	~	0.0%	~	0.0%	~	0.0%	~	0.0%	~	0.0%	~
	Time Expiry	10	10.2%	~	3.5%	~	3.5%	~	3.5%	~	1.8%	~
	Redundancy	-	0.0%	-	0.0%	-	0.0%	-	0.0%	-	0.0%	~
Other / No Spec												
	Total	-	N/A	-	N/A	-	N/A	-	N/A	-	N/A	~
	Voluntary Outflow	-	N/A	-	N/A	-	N/A	-	N/A	-	N/A	~
	Other Wastage	-	N/A	-	N/A	-	N/A	-	N/A	-	N/A	~
	Time Expiry	-	N/A	-	N/A	-	N/A	-	N/A	-	N/A	~
	Redundancy	-	N/A	-	N/A	-	N/A	-	N/A	-	N/A	~
Royal Marines General Service												
	Total	60	7.1%	80	10.0%	50	7.2%	50	6.2%	60	7.8%	10
	Voluntary Outflow	20	3.1%	30	3.7%	40	4.8%	20	2.6%	30	4.1%	~
	Other Wastage	10	1.0%	10	1.6%	10	1.1%	10	1.6%	10	1.1%	~
	Time Expiry	20	3.0%	20	2.9%	10	1.4%	20	2.0%	20	2.6%	~
	Redundancy	-	0.0%	10	1.8%	-	0.0%	-	0.0%	-	0.0%	~
Royal Marines Band Service												
	Total	-	0.0%	~	16.9%	~	17.9%	-	0.0%	-	0.0%	~
	Voluntary Outflow	-	0.0%	~	8.5%	~	17.9%	-	0.0%	-	0.0%	~
	Other Wastage	-	0.0%	~	8.5%	-	0.0%	-	0.0%	-	0.0%	~
	Time Expiry	-	0.0%	-	0.0%	-	0.0%	-	0.0%	-	0.0%	~
	Redundancy	-	0.0%	-	0.0%	-	0.0%	-	0.0%	-	0.0%	~
Career												
	Total	~	N/A	-	N/A	-	N/A	-	N/A	-	N/A	~
	Voluntary Outflow	~	N/A	-	N/A	-	N/A	-	N/A	-	N/A	~
	Other Wastage	-	N/A	-	N/A	-	N/A	-	N/A	-	N/A	~
	Time Expiry	~	N/A	-	N/A	-	N/A	-	N/A	-	N/A	~
	Redundancy	-	N/A	-	N/A	-	N/A	-	N/A	-	N/A	~

	2011/2012		2012/2013		2013/2014		2014/2015		12 Mths to 1st Dec 15		Actual Nov 15
	Nos.	%	Nos.	%	Nos.	%	Nos.	%	Nos.	%	
Total Ratings	3,360	12.0%	3,290	12.7%	2,760	11.2%	2,560	10.7%	2,340	9.8%	160
Royal Navy Ratings											
Total	2,670	12.4%	2,390	12.1%	2,280	12.4%	2,000	11.2%	1,800	10.2%	120
Voluntary Outflow	870	4.0%	1,060	5.3%	1,190	6.4%	1,160	6.5%	1,040	5.9%	80
Other Wastage	640	3.0%	400	2.1%	380	2.1%	400	2.2%	390	2.2%	30
Time Expiry	510	2.4%	530	2.7%	610	3.3%	380	2.1%	300	1.7%	20
Promotion to Officer	50	0.2%	50	0.2%	70	0.4%	60	0.3%	60	0.4%	-
Redundancy	590	2.8%	350	1.8%	40	0.2%	-	0.0%	-	0.0%	-
Royal Marine Ratings											
Total	690	10.6%	900	14.6%	480	7.7%	570	9.0%	540	8.6%	40
Voluntary Outflow	380	5.8%	560	9.0%	240	3.8%	340	5.3%	320	5.0%	20
Other Wastage	180	2.8%	190	3.1%	130	2.1%	130	2.1%	160	2.5%	20
Time Expiry	120	1.8%	140	2.3%	80	1.4%	80	1.3%	50	0.8%	-
Promotion to Officer	20	0.3%	10	0.2%	20	0.4%	20	0.3%	20	0.3%	-
Redundancy	-	0.0%	-	0.0%	-	0.0%	-	0.0%	-	0.0%	-
Warfare (General Service)											
Total	660	12.2%	710	14.5%	550	12.1%	520	11.6%	400	9.5%	30
Voluntary Outflow	260	4.9%	320	6.6%	300	6.6%	310	7.0%	250	6.0%	20
Other Wastage	170	3.2%	110	2.2%	110	2.5%	110	2.4%	70	1.7%	-
Time Expiry	130	2.4%	140	2.7%	130	2.8%	90	2.1%	60	1.5%	-
Promotion to Officer	-	0.1%	10	0.2%	10	0.2%	10	0.2%	10	0.3%	-
Redundancy	90	1.6%	140	2.7%	-	0.1%	-	0.0%	-	0.0%	-
Warfare (Submarine)											
Total	80	9.0%	80	9.4%	80	9.8%	70	8.7%	60	9.0%	-
Voluntary Outflow	30	3.7%	30	4.0%	30	4.0%	40	4.5%	30	4.3%	-
Other Wastage	20	2.0%	20	2.2%	20	2.1%	20	2.3%	20	2.4%	-
Time Expiry	30	3.3%	30	3.2%	20	3.2%	10	1.7%	20	2.1%	-
Promotion to Officer	-	0.0%	-	0.0%	-	0.5%	-	0.1%	-	0.1%	-
Redundancy	-	0.0%	-	0.0%	-	0.0%	-	0.0%	-	0.0%	-
Warfare (Air)											
Total	80	9.3%	100	13.0%	80	11.5%	70	9.4%	60	8.8%	-
Voluntary Outflow	30	3.5%	20	2.6%	40	5.0%	40	5.3%	40	5.2%	-
Other Wastage	10	1.3%	10	1.8%	10	1.4%	10	2.0%	20	2.2%	-
Time Expiry	10	1.6%	20	2.0%	20	2.7%	10	1.9%	10	0.9%	-
Promotion to Officer	-	0.0%	-	0.5%	-	0.4%	-	0.3%	-	0.4%	-
Redundancy	20	2.8%	50	6.0%	10	2.0%	-	0.0%	-	0.0%	-
Engineering (General Service)											
Total	760	15.6%	600	14.1%	680	17.4%	550	15.1%	460	12.1%	30
Voluntary Outflow	240	5.0%	310	7.3%	430	10.9%	330	9.0%	270	7.1%	20
Other Wastage	180	3.7%	80	1.9%	90	2.2%	110	2.9%	100	2.6%	10
Time Expiry	140	2.8%	120	2.7%	150	3.9%	100	2.7%	80	2.0%	-
Promotion to Officer	20	0.4%	10	0.3%	20	0.4%	20	0.5%	20	0.4%	-
Redundancy	180	3.8%	80	2.0%	-	0.0%	-	0.0%	-	0.0%	-
Engineering (Submarine)											
Total	160	7.4%	200	9.5%	240	11.8%	240	12.6%	220	11.1%	20
Voluntary Outflow	60	2.7%	110	5.2%	120	5.9%	140	7.1%	130	6.4%	10
Other Wastage	40	2.1%	30	1.5%	50	2.3%	40	2.2%	50	2.5%	10
Time Expiry	50	2.4%	60	2.7%	70	3.4%	60	3.0%	40	2.0%	10
Promotion to Officer	-	0.2%	-	0.2%	-	0.2%	-	0.3%	10	0.3%	-
Redundancy	-	0.0%	-	0.0%	-	0.0%	-	0.0%	-	0.0%	-
Engineering (Air)											
Total	460	13.1%	240	7.7%	280	9.0%	260	8.7%	290	9.8%	20
Voluntary Outflow	100	2.7%	110	3.3%	120	4.0%	170	5.7%	190	6.6%	20
Other Wastage	100	2.7%	50	1.6%	50	1.5%	30	1.1%	40	1.5%	10
Time Expiry	60	1.7%	70	2.2%	80	2.8%	40	1.3%	40	1.4%	-
Promotion to Officer	10	0.4%	10	0.2%	20	0.7%	20	0.5%	10	0.4%	-
Redundancy	200	5.6%	10	0.3%	-	0.0%	-	0.0%	-	0.0%	-

		2011/2012		2012/2013		2013/2014		2014/2015		12 Mths to 1st Dec 15		Actual Nov 15
		Nos.	%	Nos.	%	Nos.	%	Nos.	%	Nos.	%	
Logistics	Total	380	12.4%	340	12.2%	290	11.2%	240	9.0%	240	9.4%	10
	Voluntary Outflow	110	3.7%	110	3.9%	110	4.3%	110	4.4%	110	4.2%	10
	Other Wastage	90	3.0%	80	2.9%	50	1.8%	60	2.5%	80	3.3%	~
	Time Expiry	80	2.4%	90	3.3%	110	4.2%	50	2.0%	40	1.6%	~
	Promotion to Officer	10	0.2%	~	0.1%	10	0.3%	~	0.2%	10	0.3%	-
	Redundancy	100	3.1%	60	2.1%	20	0.7%	-	0.0%	-	0.0%	-
Medical	Total	100	10.6%	120	12.5%	90	10.2%	90	9.5%	90	10.4%	~
	Voluntary Outflow	40	4.2%	50	5.1%	40	4.8%	40	4.4%	50	5.3%	-
	Other Wastage	30	3.3%	20	2.1%	20	2.3%	20	2.3%	20	2.6%	~
	Time Expiry	20	1.9%	20	2.5%	20	2.4%	20	2.2%	20	1.8%	~
	Promotion to Officer	10	0.6%	10	1.0%	~	0.5%	~	0.6%	10	0.8%	-
	Redundancy	10	0.6%	20	1.8%	~	0.2%	-	0.0%	-	0.0%	-
Other / No Spec	Total	~	N/A	-	N/A	-	N/A	-	N/A	-	N/A	-
	Voluntary Outflow	-	N/A	-	N/A	-	N/A	-	N/A	-	N/A	-
	Other Wastage	-	N/A	-	N/A	-	N/A	-	N/A	-	N/A	-
	Time Expiry	~	N/A	-	N/A	-	N/A	-	N/A	-	N/A	-
	Promotion to Officer	-	N/A	-	N/A	-	N/A	-	N/A	-	N/A	-
	Redundancy	-	N/A	-	N/A	-	N/A	-	N/A	-	N/A	-
Royal Marines General Service	Total	680	11.1%	870	15.2%	440	7.7%	520	9.0%	490	8.5%	40
	Voluntary Outflow	370	6.1%	540	9.5%	220	3.9%	310	5.4%	290	5.1%	20
	Other Wastage	180	2.9%	180	3.2%	120	2.2%	120	2.1%	140	2.5%	20
	Time Expiry	110	1.8%	140	2.4%	70	1.3%	70	1.2%	40	0.7%	~
	Promotion to Officer	20	0.3%	10	0.1%	20	0.4%	20	0.3%	20	0.3%	-
	Redundancy	-	0.0%	-	0.0%	-	0.0%	-	0.0%	-	0.0%	-
Royal Marines Band Service	Total	10	3.9%	20	5.3%	30	7.6%	20	7.3%	20	6.1%	~
	Voluntary Outflow	10	1.8%	10	1.8%	10	2.6%	10	4.1%	10	2.6%	-
	Other Wastage	~	0.3%	~	1.5%	~	1.2%	-	0.0%	~	0.3%	-
	Time Expiry	10	1.8%	~	1.5%	10	3.2%	10	2.9%	10	2.9%	~
	Promotion to Officer	-	0.0%	~	0.6%	~	0.6%	~	0.3%	~	0.3%	-
	Redundancy	-	0.0%	-	0.0%	-	0.0%	-	0.0%	-	0.0%	-
Career	Total	-	N/A	-	N/A	-	N/A	-	N/A	-	N/A	-
	Voluntary Outflow	-	N/A	-	N/A	-	N/A	-	N/A	-	N/A	-
	Other Wastage	-	N/A	-	N/A	-	N/A	-	N/A	-	N/A	-
	Time Expiry	-	N/A	-	N/A	-	N/A	-	N/A	-	N/A	-
	Promotion to Officer	-	N/A	-	N/A	-	N/A	-	N/A	-	N/A	-
	Redundancy	-	N/A	-	N/A	-	N/A	-	N/A	-	N/A	-

2011/2012		2012/2013		2013/2014		2014/2015	
Nos.	%	Nos.	%	Nos.	%	Nos.	%

12 Months to 1st Dec 15	
Nos.	%

Actual Nov 15

Total Officers	200	3.1%	240	3.7%	260	4.3%	250	4.2%
-----------------------	------------	-------------	------------	-------------	------------	-------------	------------	-------------

270	4.6%
------------	-------------

20

Royal Navy Officers								
Total	180	3.2%	200	3.7%	230	4.3%	230	4.4%
OF9	-	-	-	-	-	-	-	-
OF8	-	-	-	-	-	-	-	-
OF7	-	-	-	-	-	-	-	-
OF6	10	10.1%	10	10.2%	10	13.9%	10	9.1%
OF5	10	5.5%	10	5.3%	20	6.4%	20	8.1%
OF4	30	3.4%	40	4.3%	40	4.8%	50	5.2%
OF3	70	3.7%	70	3.9%	80	4.3%	80	4.4%
OF2	50	2.3%	70	3.1%	80	3.7%	80	3.7%
OF1	~	1.1%	-	-	-	-	~	1.0%
Royal Marine Officers								
Total	20	3.0%	30	4.1%	40	5.0%	20	2.9%
OF9	-	-	-	-	-	-	-	-
OF8	-	-	-	-	-	-	-	-
OF7	-	-	-	-	-	-	-	-
OF6	-	-	~	27.3%	-	-	~	7.7%
OF5	-	-	-	-	~	5.8%	~	9.8%
OF4	~	4.1%	10	5.1%	10	7.0%	-	-
OF3	10	3.3%	10	3.9%	10	4.7%	~	1.7%
OF2	10	3.3%	10	4.3%	20	5.2%	10	4.9%
OF1	-	-	-	-	-	-	-	-

240	4.6%
-	-
-	-
~	3.6%
-	-
20	6.1%
50	5.2%
90	5.0%
90	4.3%
-	-
40	4.8%
-	-
-	-
-	-
~	14.8%
~	12.8%
~	4.0%
10	4.3%
20	5.6%
-	-

10
-
-
-
-
-
~
~
10
-
-
~
-
-
-
~
-
-

10b Trained Regular Royal Navy and Royal Marine Rating Voluntary Outflow Exits by Paid Rank

	2011/2012		2012/2013		2013/2014		2014/2015		12 Months to 1st Dec 15		Actual Nov 15
	Nos.	%	Nos.	%	Nos.	%	Nos.	%	Nos.	%	
Total Ratings	1,250	4.5%	1,610	6.2%	1,420	5.8%	1,490	6.2%	1,360	5.7%	100
Warfare (General Service)											
Total	260	4.9%	320	6.6%	300	6.6%	310	7.0%	250	6.0%	20
OR9	10	4.8%	10	8.8%	~	3.3%	10	6.2%	10	8.5%	~
OR8	~	10.6%	~	13.4%	~	9.3%	~	16.1%	~	25.3%	-
OR7	30	4.6%	40	6.4%	20	4.2%	20	4.1%	30	5.0%	~
OR6	20	1.8%	40	4.4%	30	3.5%	20	3.3%	30	4.0%	~
OR4	30	2.2%	60	4.4%	60	5.2%	70	5.7%	60	5.5%	~
OR2	180	7.7%	180	8.7%	180	9.8%	180	10.3%	120	7.2%	10
Warfare (Submarine)											
Total	30	3.7%	30	4.0%	30	4.0%	40	4.5%	30	4.3%	~
OR9	~	5.0%	~	11.5%	~	3.1%	-	-	~	3.0%	-
OR8	-	-	-	-	-	-	-	-	-	-	-
OR7	~	2.9%	~	2.9%	10	7.2%	~	4.2%	~	3.5%	-
OR6	~	3.3%	~	1.6%	~	3.4%	~	0.9%	~	-	-
OR4	~	2.7%	~	2.3%	~	0.6%	~	1.8%	-	-	-
OR2	20	4.4%	20	5.2%	20	4.9%	30	7.4%	30	7.9%	~
Warfare (Air)											
Total	30	3.5%	20	2.6%	40	5.0%	40	5.3%	40	5.2%	-
OR9	~	2.8%	~	3.1%	~	13.7%	10	21.9%	~	12.5%	-
OR8	-	-	-	-	-	-	-	-	-	-	-
OR7	10	7.7%	~	5.7%	~	6.2%	10	10.0%	10	9.0%	-
OR6	~	3.1%	~	1.9%	10	5.3%	~	3.4%	~	2.1%	-
OR4	10	2.4%	~	1.7%	10	3.7%	~	2.5%	10	5.5%	-
OR3	-	-	-	-	-	-	-	-	-	-	-
OR2	10	3.5%	10	2.9%	10	4.5%	10	5.4%	10	4.9%	-
Engineering (General Service)											
Total	240	5.0%	310	7.3%	430	10.9%	330	9.0%	270	7.1%	20
OR9	10	5.6%	20	12.3%	10	6.7%	10	5.6%	10	4.5%	-
OR8	20	6.9%	30	12.8%	40	15.4%	10	15.3%	10	13.0%	-
OR7	40	3.9%	50	5.5%	70	9.0%	50	7.2%	40	6.3%	~
OR6	40	4.3%	50	7.0%	70	11.0%	50	9.7%	30	4.8%	~
OR4	20	2.7%	50	5.6%	80	9.3%	70	9.2%	70	8.4%	10
OR2	110	6.9%	120	8.0%	170	12.7%	120	9.7%	110	8.1%	10
Engineering (Submarine)											
Total	60	2.7%	110	5.2%	120	5.9%	140	7.1%	130	6.4%	10
OR9	~	5.9%	~	4.8%	~	1.7%	~	1.4%	~	1.2%	~
OR8	~	1.6%	10	4.0%	~	1.2%	10	6.1%	~	2.8%	-
OR7	10	2.5%	30	6.0%	40	7.9%	30	8.7%	30	7.4%	~
OR6	20	4.1%	30	9.0%	30	11.9%	30	11.0%	20	6.8%	~
OR4	10	1.8%	20	5.3%	20	5.8%	40	10.7%	40	9.3%	10
OR2	20	2.4%	20	2.9%	20	3.8%	30	3.7%	40	5.2%	-
Engineering (Air)											
Total	100	2.7%	110	3.3%	120	4.0%	170	5.7%	190	6.6%	20
OR9	~	7.0%	~	5.5%	~	7.2%	~	3.9%	~	4.5%	-
OR8	~	5.9%	~	2.0%	~	5.4%	~	2.8%	-	-	-
OR7	20	3.2%	20	3.5%	20	3.9%	30	6.5%	20	5.5%	~
OR6	20	2.1%	20	3.0%	30	4.0%	30	4.5%	30	5.0%	~
OR4	10	1.3%	20	3.1%	10	1.7%	30	3.3%	30	4.4%	~
OR2	50	3.3%	40	3.6%	60	5.6%	80	8.1%	100	9.9%	10

	2011/2012		2012/2013		2013/2014		2014/2015		12 Months to 1st Dec 15		Actual Nov 15
	Nos.	%	Nos.	%	Nos.	%	Nos.	%	Nos.	%	
Logistics											
Total	110	3.7%	110	3.9%	110	4.3%	110	4.4%	110	4.2%	10
OR9	~	5.6%	~	6.5%	~	8.7%	~	1.6%	~	4.8%	-
OR8	-	-	-	-	-	-	-	-	-	-	-
OR7	10	5.6%	10	4.1%	10	5.5%	~	2.2%	10	3.0%	-
OR6	10	2.6%	10	2.1%	10	3.5%	10	2.0%	10	2.0%	~
OR4	20	2.4%	30	3.4%	20	3.2%	30	4.5%	20	2.7%	-
OR3	-	-	-	-	-	-	-	-	~	14.7%	-
OR2	60	4.4%	60	4.5%	60	4.9%	60	5.7%	70	6.1%	10
Medical											
Total	40	4.2%	50	5.1%	40	4.8%	40	4.4%	50	5.3%	~
OR9	~	11.4%	~	11.2%	~	11.1%	~	3.6%	~	10.3%	-
OR8	-	-	-	-	-	-	-	-	-	-	-
OR7	~	2.4%	~	3.3%	~	4.3%	10	5.1%	~	3.4%	-
OR6	~	1.6%	~	2.8%	~	1.7%	10	4.7%	10	6.6%	~
OR4	20	5.0%	20	5.6%	20	7.2%	10	4.3%	10	4.0%	-
OR3	~	11.0%	-	-	-	-	-	-	-	-	-
OR2	20	4.8%	20	6.4%	10	4.1%	10	4.3%	20	6.0%	-
Royal Marines General Service											
Total	370	6.1%	540	9.5%	220	3.9%	310	5.4%	290	5.1%	20
OR9	~	5.3%	10	10.2%	~	1.2%	~	3.5%	~	2.4%	-
OR8	10	3.5%	10	4.0%	10	3.9%	~	1.3%	10	2.7%	-
OR7	10	2.1%	20	3.9%	10	1.9%	10	1.6%	~	0.8%	-
OR6	10	1.9%	30	5.3%	10	1.1%	~	0.7%	10	1.6%	-
OR4	90	7.4%	140	12.7%	30	2.5%	30	2.8%	30	3.0%	~
OR3	30	4.8%	20	3.0%	20	2.6%	20	3.5%	30	3.9%	-
OR2	220	7.1%	330	11.8%	160	5.6%	240	8.5%	210	7.7%	20
Royal Marines Band Service											
Total	10	1.8%	10	1.8%	10	2.6%	10	4.1%	10	2.6%	-
OR9	-	-	-	-	-	-	-	-	-	-	-
OR8	-	-	-	-	-	-	~	8.2%	-	-	-
OR7	-	-	-	-	-	-	~	3.2%	-	-	-
OR6	-	-	-	-	~	3.9%	~	2.1%	~	2.1%	-
OR4	~	1.7%	-	-	~	1.7%	-	-	-	-	-
OR3	-	-	-	-	-	-	-	-	-	-	-
OR2	~	2.8%	10	3.3%	10	3.3%	10	5.9%	10	4.3%	-

11a Trained Regular Royal Navy and Royal Marine Officer Promotions to Substantive Rank					
	2011/2012	2012/2013	2013/2014	2014/2015	12 Months to 1st Dec 15
Total Officers	480	490	510	560	570
OF7 and Above	20	10	10	10	10
OF6	20	20	20	30	20
OF5	40	30	50	70	50
OF4	100	100	90	110	130
OF3	180	210	220	240	290
OF2	110	120	120	100	70
OF1	N/A	N/A	N/A	N/A	N/A

11b Trained Regular Royal Navy and Royal Marine Rating and Other Rank Promotions to Substantive Rank					
	2011/2012	2012/2013	2013/2014	2014/2015	12 Months to 1st Dec 15
Total Ratings	1,880	1,530	2,660	1,990	2,410
OR9	70	30	110	80	220
OR8	110	30	150	100	130
OR7	360	300	420	360	390
OR6	550	410	740	560	660
OR4	800	760	1,220	900	1,010
OR3	~	~	-	-	-

Dec-15 Edition.

12a Gains to the Trained Regular Royal Navy and Royal Marines Officer Strength from Untrained by Branch

		2011/2012	2012/2013	2013/2014	2014/2015	12 Months to 1st Dec 15
Royal Navy	Officers					
	Total	290	290	240	280	250
Royal Marines	Officers					
	Total	40	50	50	60	60
	Warfare	160	140	110	140	110
	Engineer	70	100	80	100	70
	Logistics	30	20	20	30	20
	Medical	30	20	20	20	40
	Chaplain	~	~	~	-	~
	Other	-	-	-	-	-
	Royal Marines General Service	40	50	50	60	60
	Royal Marines Band Service	-	~	-	-	-

		Dec-14	Jan-15	Feb-15	Mar-15	Apr-15	May-15	Jun-15	Jul-15	Aug-15	Sep-15	Oct-15	Nov-15
Royal Navy	Officers												
	Total	10	30	10	40	10	30	30	~	30	20	40	~
Royal Marines	Officers												
	Total	40	-	20	-	-	-	-	-	-	-	-	-
	Warfare	~	10	~	30	-	10	10	~	10	~	30	~
	Engineer	10	20	~	10	~	10	~	~	10	10	~	~
	Logistics	-	-	-	-	-	10	10	-	-	10	-	-
	Medical	-	~	-	~	10	~	10	-	~	-	~	-
	Chaplain	-	-	-	-	-	-	-	-	~	-	-	-
	Other	-	-	-	-	-	-	-	-	-	-	-	-
	Royal Marines General Service	40	-	20	-	-	-	-	-	-	-	-	-
	Royal Marines Band Service	-	-	-	-	-	-	-	-	-	-	-	-

12b Gains to the Trained Regular Royal Navy and Royal Marine Rating Strength from Untrained

		2011/2012	2012/2013	2013/2014	2014/2015	12 Months to 1st Dec 15
Royal Navy	Ratings					
	Total	910	980	1,230	1,580	1,530
Royal Marines	Other Ranks					
	Total	530	540	650	520	390
Warfare	Total	240	270	310	450	420
(General Service)	Warfare Specialist (WS)	70	120	120	160	160
	WS (Above Water Tactical)	~	-	-	-	-
	WS (Above Water Warfare)	-	-	-	-	-
	WS (Electronic Warfare)	-	-	-	-	-
	WS (Under Water)	-	-	-	-	~
	Comms Info Systems Specialist	40	40	40	80	40
	Hydrographic/Meteorological (H/M)	10	20	20	20	20
	H/M (Hydrographic)	-	-	-	-	-
	H/M (Meteorological)	-	~	-	-	-
	Mine Warfare	20	40	50	50	30
	Diver	20	20	30	30	30
	Seaman Specialist	60	20	40	100	110
	Naval Airman (Photographer)	-	-	-	-	-
	Physical Training Instructor	~	-	-	-	-
	Royal Navy Police	-	-	-	-	-
	Communications Technician	10	10	10	10	20
	Unspecified	-	-	-	-	-
Warfare	Total	40	40	50	80	80
(Submarine)	Coxswain (Submarines)	-	-	-	-	-
	Warfare Specialist (Sensors Submarines)	20	20	30	40	40
	Warfare Specialist (Tactical Submarines)	-	10	10	20	30
	Comms Info Systems Spec (Submarines)	20	10	10	20	10
	Unspecified	-	-	-	-	-
Warfare (Air)	Total	20	20	30	70	60
	Aircrewman	-	-	~	-	-
	Naval Airman (Aircraft Control)	10	10	~	10	10
	Naval Airman (Aircraft Handler)	20	10	30	60	50
	Royal Marines Aircrewman	-	-	-	-	-
	Unspecified	-	-	-	-	-
Engineering	Total	160	210	310	350	390
(General Service)	Marine Engineer Mechanic	-	-	-	-	-
	Weapon Engineer Mechanic	-	-	-	-	-
	Engineer Technician (Marine Engineer)	90	150	200	190	200
	Engineer Technician (Weapon Engineer)	70	60	120	160	190
	Unspecified	-	-	-	-	-
Engineering	Total	130	130	150	190	150
(Submarine)	Marine Engineer Mechanic	-	-	-	-	-
	Weapon Engineer Mechanic	-	-	-	-	-
	Engineer Technician (Marine Engineer Sub)	60	90	90	110	80
	Engineer Tech (Weapon Engineer Sub)	70	40	70	80	70
Engineering (Air)	Total	190	100	190	200	200
	Air Engineer Artificer	-	-	-	-	-
	Air Engineer Mechanic	-	-	-	-	-
	Air Engineer Technician	180	100	180	190	190
	Naval Airman (Survival Equipment)	~	-	10	10	10
	Unspecified	-	-	-	-	-
Logistics	Total	90	140	120	180	180
	Caterer	-	-	-	-	-
	Chef	40	40	50	90	60
	Steward	10	20	30	10	20
	Supply Chain	10	30	30	40	50
	Writer	30	50	20	30	60
	Family Service	-	-	-	-	-
	Unspecified	-	-	-	-	-
Medical	Total	50	60	60	60	60
	Dental Hygienist	-	-	-	-	-
	Dental Surgery Assistant	~	~	~	~	~
	Medical Assistant	40	40	50	40	40
	Naval Nurse	10	10	~	20	20
	Medical Technician	-	-	~	-	~
	Royal Marines Medical Assistant	-	-	-	-	-
	Unspecified	-	-	-	-	-
RM General Service Total		510	520	630	490	370
RM Band Service	Total	20	20	20	30	20
	Band	20	20	20	30	10
	Bugler	~	~	10	~	~

12b Gains to the Trained Regular Royal Navy and Royal Marines Rating Strength from Untrained by Branch and Specialisation (Cont)

		Dec-14	Jan-15	Feb-15	Mar-15	Apr-15	May-15	Jun-15	Jul-15	Aug-15	Sep-15	Oct-15	Nov-15
Royal Navy	Ratings												
	Total	100	120	120	200	20	140	160	200	10	140	200	130
Royal Marines	Other Ranks												
	Total	-	40	30	30	20	50	50	40	40	30	40	20
Warfare (General Service)	Total	30	20	40	70	~	40	50	50	10	30	30	50
	Warfare Specialist (WS)	10	10	10	20	~	10	20	30	-	10	10	10
	WS (Above Water Tactical)	-	-	-	-	-	-	-	-	-	-	-	-
	WS (Above Water Warfare)	-	-	-	-	-	-	-	-	-	-	-	-
	WS (Under Water)	-	-	-	-	-	-	-	-	-	-	-	-
	WS (Electronic Warfare)	-	-	-	-	-	-	-	-	-	-	~	-
	Comms Info Systems Specialist	-	20	-	10	~	10	~	-	-	-	-	-
	Hydrographic/Meteorological (H/M)	-	-	~	10	-	-	10	10	-	-	-	-
	H/M (Hydrographic)	-	-	-	-	-	-	-	-	-	-	-	-
	H/M (Meteorological)	-	-	-	-	-	-	-	-	-	-	-	-
	Mine Warfare	-	-	-	10	-	-	10	-	-	-	~	10
	Diver	-	-	10	-	-	-	10	-	10	-	-	10
	Seaman Specialist	10	-	10	20	-	10	-	10	-	10	10	10
	Naval Airman (Photographer)	-	-	-	-	-	-	-	-	-	-	-	-
	Physical Training Instructor	-	-	-	-	-	-	-	-	-	-	-	-
	Royal Navy Police	-	-	-	-	-	-	-	-	-	-	-	-
	Communications Technician	-	-	-	-	-	-	10	-	-	-	-	10
	Unspecified	-	-	-	-	-	-	-	-	-	-	-	-
Warfare (Submarine)	Total	~	10	10	10	-	10	10	10	-	~	10	-
	Coxswain (Submarines)	-	-	-	-	-	-	-	-	-	-	-	-
	Warfare Specialist (Sensors Submarines)	~	10	-	10	-	10	~	~	-	~	~	-
	Warfare Specialist (Tactical Submarines)	-	-	10	10	-	-	10	10	-	-	10	-
	Comms Info Sys Specialist (Submarines)	-	-	~	~	-	10	-	-	-	-	-	-
	Unspecified	-	-	-	-	-	-	-	-	-	-	-	-
Warfare (Air)	Total	~	-	10	20	-	-	-	10	-	-	-	20
	Aircrewman	-	-	-	-	-	-	-	-	-	-	-	-
	Naval Airman (Aircraft Control)	~	-	10	~	-	-	-	-	-	-	-	-
	Naval Airman (Aircraft Handler)	-	-	-	20	-	-	-	10	-	-	-	20
	Royal Marines Aircrewman	-	-	-	-	-	-	-	-	-	-	-	-
	Unspecified	-	-	-	-	-	-	-	-	-	-	-	-
Engineering (General Service)	Total	-	50	40	30	-	50	30	60	-	40	70	40
	Marine Engineer Mechanic	-	-	-	-	-	-	-	-	-	-	-	-
	Weapon Engineer Mechanic	-	-	-	-	-	-	-	-	-	-	-	-
	Engineer Technician (Marine Engineer)	-	20	30	~	-	40	~	40	-	-	40	20
	Engineer Technician (Weapon Engineer)	-	20	~	20	-	10	20	20	-	40	30	20
	Unspecified	-	-	-	-	-	-	-	-	-	-	-	-
Engineering (Submarine)	Total	30	30	10	~	~	10	10	30	-	10	30	-
	Marine Engineer Mechanic	-	-	-	-	-	-	-	-	-	-	-	-
	Weapon Engineer Mechanic	-	-	-	-	-	-	-	-	-	-	-	-
	Engineer Technician (Marine Engineer Sub)	20	20	-	-	-	-	-	20	-	~	20	-
	Engineer Tech (Weapon Engineer Sub)	10	~	10	~	~	10	10	10	-	10	10	-
Engineering (Air)	Total	10	10	20	20	-	20	30	20	-	30	30	20
	Air Engineer Artificer	-	-	-	-	-	-	-	-	-	-	-	-
	Air Engineer Mechanic	-	-	-	-	-	-	-	-	-	-	-	-
	Air Engineer Technician	10	10	10	20	-	20	30	20	-	30	30	20
	Naval Airman (Survival Equipment)	-	-	10	-	-	-	-	-	-	-	-	-
	Unspecified	-	-	-	-	-	-	-	-	-	-	-	-
Logistics	Total	30	~	10	30	10	10	20	20	~	10	20	~
	Caterer	-	-	-	-	-	-	-	-	-	-	-	-
	Chef	10	~	10	10	-	10	~	10	-	~	~	-
	Steward	10	-	-	-	-	-	10	-	-	~	~	-
	Supply Chain	-	-	~	20	10	~	~	~	~	10	10	-
	Writer	10	~	-	~	10	-	10	10	-	-	10	~
	Family Service	-	-	-	-	-	-	-	-	-	-	-	-
	Unspecified	-	-	-	-	-	-	-	-	-	-	-	-
Medical	Total	-	10	~	10	~	~	10	10	-	10	10	~
	Dental Hygienist	-	-	-	-	-	-	-	-	-	-	-	-
	Dental Surgery Assistant	-	~	-	-	-	-	-	~	-	-	-	-
	Medical Assistant	-	-	~	10	~	~	10	~	-	10	10	-
	Naval Nurse	-	10	-	-	-	~	-	-	-	10	~	-
	Medical Technician	-	-	-	-	-	-	-	-	-	-	-	~
	Royal Marines Medical Assistant	-	-	-	-	-	-	-	-	-	-	-	-
	Unspecified	-	-	-	-	-	-	-	-	-	-	-	-
RM General Service Total		-	40	30	30	20	50	50	40	40	20	40	20
RM Band Service	Total	-	~	-	-	~	-	-	-	-	10	-	-
	Band	-	~	-	-	~	-	-	-	-	10	-	-
	Bugler	-	~	-	-	~	-	-	-	-	~	-	-

13

Trained Intake to the Regular Royal Navy and Royal Marine Service

	2011/2012	2012/2013	2013/2014	2014/2015	12 Months to 1st Dec 15	Actual Nov 15
Total Officers	~	10	~	10	10	~
Warfare	~	~	~	~	~	-
Engineer	-	~	~	~	-	-
Logistics	-	~	-	-	-	-
Medical	~	-	~	~	10	~
Chaplain	-	-	~	~	~	-
Royal Marines General Service	~	~	~	~	-	-
Royal Marines Band Service	-	-	-	-	-	-
No Value	-	-	-	-	-	-
Total Ratings	40	60	70	60	70	10
Warfare (General Service)	20	20	10	10	20	~
Warfare (Submarine)	~	-	-	~	~	-
Warfare (Air)	~	~	~	~	~	-
Engineering (General Service)	~	~	10	~	20	~
Engineering (Submarine)	~	-	~	~	~	-
Engineering (Air)	-	~	10	~	~	-
Logistics	~	~	~	10	10	~
Medical	~	~	~	10	10	~
Royal Marines General Service	10	20	30	10	~	-
Royal Marines Band Service	-	~	~	-	-	-
No Value	-	-	-	-	-	-

The figures above show trained intake to the regular strength from Civil Life, from Another Service, from LTA, To Other Ranks from Officer and To Officer from Other Ranks

Dec-15 Edition.