



EU Type Examination Certificate Number: **0120/SGS0307**

## **Secure Meters (UK) Ltd**

Moorside Road  
Winnall  
Winchester  
SO23 7RX

Instrument Identification:

**Sprint - S3DB30-50C**

**Polyphase, Active/Import (kWh), Electricity Meter**

Instrument Traceable Number

**0120/ SGS0307**

has been assessed and certified as meeting the requirements of

## **EU Directive 2014/32/EU**

**on Measuring Instruments Annex II, Module B**

It is certified that the manufacturer's technical design and specimen for the above instrument has been examined and, based on the evidence submitted, it is considered that the instrument conforms to the requirements of Annex V of EU Directive 2014/32/EU

This certificate must be used in conjunction with a certificate covering the product verification as required in Annex II, Module D or Annex II, Module F


This certificate is valid for 10 years from 25<sup>th</sup> May 2017 until 24<sup>th</sup> May 2027  
Issue1

Certification is based on report number(s) EMA239509/1/MID dated 24<sup>th</sup> May 2017

Authorised Signature


SGS United Kingdom Limited, Notified Body 0120  
Unit 202B Worle Parkway, Weston-super-Mare, BS22 6WA UK  
t +44 (0)1934 522917 f +44 (0)1934 522137 [www.sgs.com](http://www.sgs.com)

Contact Address  
SGS United Kingdom Ltd, Units 12A & 12B, South Industrial Estate, Bowburn, Durham, DH6 5AD UK  
t +44 (0)191 377 2000 f +44 (0)191 377 2020 [www.sgs.com](http://www.sgs.com)

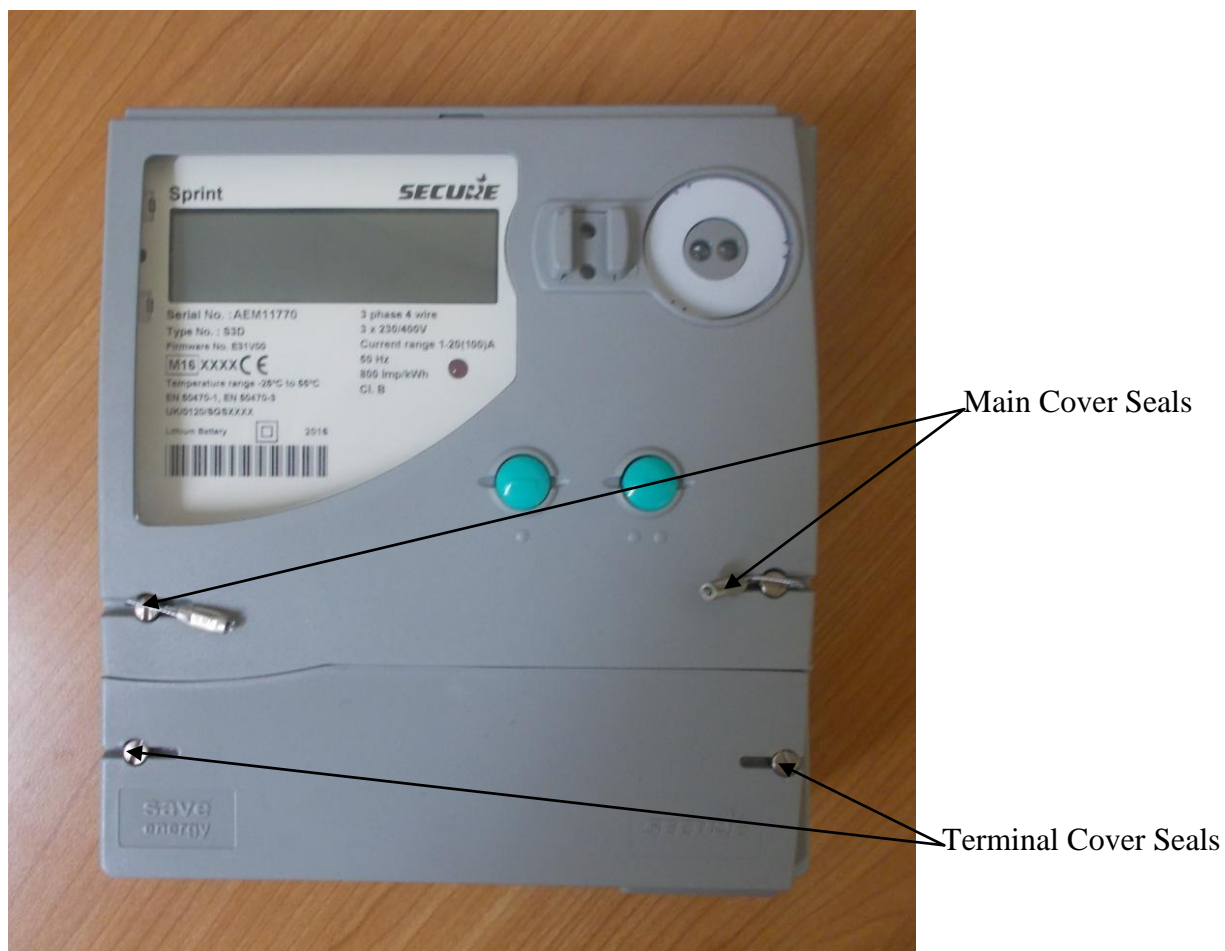
	EU-Type Examination Certificate Number:	
	<b>0120/ SGS0307</b>	
	Issue Number: 1	Dated: 25 <sup>th</sup> May 2017


## 1. Technical Data

Manufacturer	Secure Meters (UK) Ltd
Meter Type	Sprint- S3DB30-50C
Voltage Rating ( $U_n$ )	3x230/400V – 3x240/415V
Current Rating ( $I_{min}$ – $I_{ref}$ ( $I_{max}$ ))	1-20(80)A 1-20(100)A
Frequency ( $F_n$ )	50Hz
Active Accuracy Class ( $kWh$ )	A or B( $kWh$ )
Type of circuit	3P4W
Temperature Range	-25°C to +55°C
Software/ Firmware Version No	E31V00
Checksum	005D7467
Identification Location	Nameplate
Mechanical Environment	M1
Electromagnetic environment	E2
Bill Of Materials Number	S3DB30-50C
IP Rating	IP51
Insulation Protective Class	Class II
LED Pulse Constant	800imp/ kWh
Impulse Voltage Rating	6kV
AC Voltage Rating	4kV
Main Cover Sealing Type	Wire & Crimp
Integrity of meter	Inaccessible without breaking seals
Intended Location of the Meter	Indoor
Type of Register	LCD
Terminal Arrangement(s)	DIN
Location of Manufacturers Address	Associated Documents

	EU-Type Examination Certificate Number:	
	<b>0120/ SGS0307</b>	
	Issue Number: 1	Dated: 25 <sup>th</sup> May 2017


## 2. Photograph of Meter and Sealing Plan



	EU-Type Examination Certificate Number:	
	<b>0120/ SGS0307</b>	
	Issue Number: 1	Dated: 25 <sup>th</sup> May 2017

### 3. Nameplate



	EU-Type Examination Certificate Number:	
	<b>0120/ SGS0307</b>	
	Issue Number: 1	Dated: 25 <sup>th</sup> May 2017


#### 4. Calculation of the composite error/ MPE

During the type approval examination the influence factors for temperature, frequency and voltage are determined per load point. The table below represents the sum of the square values per load, determined via the following formula:-


$$\delta e(T, U, f) = \sqrt{(\delta e^2(T, I, \cos\varphi) + \delta e^2(U, I, \cos\varphi) + \delta e^2(f, I, \cos\varphi))}$$

where

$\delta e(T, I, \cos\varphi) =$  Additional error due to variation of the temperature at the same load  
 $\delta e(U, I, \cos\varphi) =$  Additional error due to variation of the voltage at the same load  
 $\delta e(f, I, \cos\varphi) =$  Additional error due to variation of the frequency at the same load

	EU-Type Examination Certificate Number:	
	<b>0120/ SGS0307</b>	
	Issue Number: 1	Dated: 25 <sup>th</sup> May 2017

		Influence Factors for Temperature. Frequency & Voltage					
Current	PF Cos	-25°C	-10°C	5°C	30°C	40°C	55°C
I <sub>min</sub>	1.0	0.34	0.28	0.21	0.11	0.17	0.28
I <sub>tr</sub>	1.0	0.24	0.21	0.12	0.09	0.16	0.21
10I <sub>tr</sub>	1.0	0.28	0.25	0.13	0.06	0.11	0.20
I <sub>max</sub>	1.0	0.28	0.22	0.12	0.06	0.13	0.21
I <sub>tr</sub>	0.5ind	0.48	0.64	0.41	0.09	0.14	0.33
10I <sub>tr</sub>	0.5ind	0.41	0.47	0.30	0.07	0.20	0.37
I <sub>max</sub>	0.5ind	0.45	0.47	0.30	0.09	0.22	0.40
I <sub>tr</sub>	0.8cap	0.69	0.55	0.31	0.06	0.25	0.46
10I <sub>tr</sub>	0.8cap	0.66	0.51	0.29	0.10	0.25	0.45
I <sub>max</sub>	0.8cap	0.67	0.50	0.27	0.13	0.29	0.50
L1					0.00	0.00	0.00
I <sub>tr</sub>	1.0	0.44	0.35	0.22	0.11	0.18	0.36
10I <sub>tr</sub>	1.0	0.44	0.29	0.16	0.06	0.15	0.28
I <sub>max</sub>	1.0	0.46	0.30	0.16	0.08	0.18	0.30
I <sub>tr</sub>	0.5ind	0.60	0.47	0.39	0.23	0.20	0.32
10I <sub>tr</sub>	0.5ind	0.42	0.34	0.25	0.11	0.19	0.31
I <sub>max</sub>	0.5ind	0.46	0.36	0.23	0.13	0.22	0.37
L2							
I <sub>tr</sub>	1.0	0.18	0.28	0.12	0.12	0.11	0.16
10I <sub>tr</sub>	1.0	0.21	0.13	0.06	0.06	0.11	0.16
I <sub>max</sub>	1.0	0.21	0.14	0.07	0.06	0.10	0.15
I <sub>tr</sub>	0.5ind	0.85	0.57	0.50	0.32	0.32	0.51
10I <sub>tr</sub>	0.5ind	0.70	0.50	0.33	0.15	0.28	0.51
I <sub>max</sub>	0.5ind	0.74	0.57	0.34	0.13	0.27	0.51
L3							
I <sub>tr</sub>	1.0	0.28	0.19	0.11	0.08	0.17	0.14
10I <sub>tr</sub>	1.0	0.33	0.21	0.12	0.09	0.13	0.20
I <sub>max</sub>	1.0	0.34	0.22	0.12	0.07	0.13	0.22
I <sub>tr</sub>	0.5ind	0.61	0.58	0.51	0.13	0.28	0.30
10I <sub>tr</sub>	0.5ind	0.54	0.40	0.28	0.10	0.24	0.36
I <sub>max</sub>	0.5ind	0.58	0.45	0.54	0.09	0.26	0.44

	EU-Type Examination Certificate Number:	
	<b>0120/ SGS0307</b>	
	Issue Number: 1	Dated: 25 <sup>th</sup> May 2017

## 5. Product Variant Identification Details

### CATCODE SPECIFICATION FOR SPRINT

S		3		D		B		3		0		-		5		0		C	
<div> <div>Identifier</div> <div>S3D 3<math>\phi</math>-4w</div> </div>				<div> <div>Class</div> <div>A Class A</div> <div>B Class B</div> </div>															
				<div> <div>Current Range</div> <div>3 20/100A</div> </div>															

Value	IP link location	Terminal cover
0	External IP (default)	Standard terminal cover
2	External IP with IP cover	Standard terminal cover
4	External IP (default)	Extended term cover
6	External IP with IP cover	Extended term cover
C	Solid link	Extended terms cover with Sealing collars & security screw.
E	Solid link	Extended term cover


Value	Clock Backup Source	Processor	Memory
5	Lithium Battery	E31	32K
7	Lithium Battery	E34	64K
D	Lithium Battery	E35	64K

External Memory + Module Provision

0 Non Xp (default)  
1 Xp, Empty Module including all covers fitted  
C Non xp with two screw (large bore plastic only)  
E XP with two screw (large bore plastic only)  
K Non xp, 230v, 12kv, PACT only, Two screw 100A  
S 240V,9.6Kbps, IP51, RPU, RS232, Magnet Sensor

Value	Interface Option	Additional Comms port
0	1 Out , 1 In (default)	NA
1	No Module Comms, Modem only (xp meter only)	NA
2	No I/O fitted	NA
4	2 Outputs	NA
5	1 Out, 0 In (on base meter)	NA
6	3 Outputs	RS232 on RJ11
7	2 Outputs	RS232 on RJ11
8	3 Outputs	GSM
A	2 Outputs(2A)	RS232 on RJ11
B	2 Outputs (100mA)	GSM
C	2 Outputs(2A)	GSM
F	No Input and Output	RS232 on RJ11

Modifications to the meter(s) described according to approval No.**0120/ SGS0307** must be notified to the issuing body to confirm the meter(s) continuing compliance to the relevant pattern approval standard(s).

	EU-Type Examination Certificate Number:	
	<b>0120/ SGS0307</b>	
	Issue Number: 1	Dated: 25 <sup>th</sup> May 2017

## 6. Document Revision History

Issue	Date	Comments
1	25/05/2017	Initial Issue

“This document is issued by the Company subject to its General Conditions of Service available on request or accessible at <http://www.sgs.com/en/Terms-and-Conditions.aspx> and, for electronic format documents, subject to Terms and Conditions for Electronic Documents at [www.sgs.com/terms\\_e-document.htm](http://www.sgs.com/terms_e-document.htm). Attention is drawn to the limitation of liability, indemnification and jurisdiction issues defined therein. Any holder of this document is advised that information contained hereon reflects the Company's findings at the time of its intervention only and within the limits of Client's instructions, if any. The Company's sole responsibility is to its Client and this document does not exonerate parties to a transaction from exercising all their rights and obligations under the transaction documents. This document cannot be reproduced except in full, without prior written approval of the Company. Any unauthorized alteration, forgery or falsification of the content or appearance of this document is unlawful and offenders may be prosecuted to the fullest extent of the law.”

“Unless otherwise stated the results shown in this test certificate refer only to the sample(s) tested *and such sample(s) are retained for 28 days only.*”

---

**\*\* End of Document \*\***

---