



Department
for Business
Innovation & Skills



Monthly Statistics of Building Materials and Components

October 2013

No. 464

NOTES

In tables where figures have been rounded to the nearest final digit, there may be an apparent slight discrepancy between the sum of the constituent items and the total as shown.

Symbols. The following symbols have been used throughout.

- | | |
|-----------------------|-------------------|
| .. = not available | (P) = provisional |
| - = nil or negligible | (R) = revised |

All figures are subject to revisions.

Unless otherwise stated, revisions are due to more complete information from late returns. If any figures are revised by 5% or more from the previously published value, an explanation will be provided.

The United Kingdom Statistics Authority has designated these statistics as National Statistics, in accordance with the Statistics and Registration Service Act 2007 and signifying compliance with the Code of Practice for Official Statistics.

Designation can be broadly interpreted to mean that the statistics:

- meet identified user needs;
- are well explained and readily accessible;
- are produced according to sound methods, and
- are managed impartially and objectively in the public interest.

Unless otherwise stated, the statistics published in this volume have been collected by the Office for National Statistics on behalf of the Department for Business, Innovation & Skills.

Lead Statistician: James Liley

For enquiries or further information about the contents of this publication please contact:

Construction Market Intelligence, 1 Victoria Street,
London, SW1H 0ET;
Telephone : 020 - 7215 - 6221
E-mail : materialstats@bis.gsi.gov.uk.

URN 13/313k

6 November 2013

CONTENTS

	<u>Page</u>
Table 1 : Construction Material Price Indices	1
Table 2 : Price Indices of Construction Materials – monthly	2 & 3
Table 3 : Price Indices of Construction Materials – annual averages	4
Table 4 : Sales of Sand and Gravel in Great Britain	5
Table 5 : Sales of Sand and Gravel by English Regions, Wales and Scotland	6 & 7
Table 6 : Sales of Sand and Gravel by English and Welsh Counties and Scottish Regions	8 & 9
Table 7 : Slate : Production, Deliveries and Stocks	10
Chart 1 : Deliveries of Sand & Gravel and Ready-Mixed Concrete	11
Table 8 : Cement and Clinker : Production, Deliveries and Stocks	12
Chart 2 : Deliveries of Bricks, Concrete Building Blocks and Cement	13
Table 9 : Bricks : Production, Deliveries and Stocks for Great Britain	14 & 15
Table 10 : Bricks : Production, Deliveries and Stocks by English Regions, Wales and Scotland	16 to 19
Table 11 : Concrete Building Blocks : Production, Deliveries and Stocks for Great Britain	20 & 21
Table 12 : Concrete Building Blocks : Production, Deliveries and Stocks by English Regions, Wales and Scotland	22 & 23
Table 13 : Concrete Roofing Tiles and Ready-Mixed Concrete	24
Chart 3 : Comparison of Imports and Exports	25
Table 14 : Value of Overseas Trade in Selected Materials and Components for Constructional Use : Imports (cif) and Exports (fob)	26 to 35

Table 1: Construction Material Price Indices

United Kingdom	2005 = 100					
	2008	2009	2010	2011	2012	2013
(a) New Housing						
January	115.3	119.7	122.3	130.1	134.9	136.3
February	116.8	120.6	122.9	131.2	135.5	137.0
March	117.5	120.6	123.4	132.0	137.0	137.4
April	118.2	120.2	125.2	132.6	137.3	137.6
May	119.0	119.8	127.2	133.4	137.4	138.1
June	118.7	119.5	128.3	134.6	136.6	137.7
July	120.0	119.1	129.0	135.0	136.6	137.5 (P)
August	120.5	120.2	129.5	135.7	136.5	138.1 (P)
September	120.4	121.0	129.9	135.6	136.3	138.0 (P)
October	121.1	121.7	129.8	135.8	136.5	
November	120.4	122.6	130.2	135.6	136.6	
December	119.7	122.3	129.9	135.2	136.0	
Annual Average	119.0	120.6	127.3	133.9	136.4	
(b) Other New Work						
January	114.3	122.9	124.6	135.1	144.5	144.9
February	116.2	122.1	125.0	137.1	145.1	145.2
March	117.3	121.6	125.9	139.1	145.1	146.1
April	119.2	120.7	129.4	141.3	145.3	145.0
May	121.6	120.7	132.0	142.5	144.7	144.7
June	123.7	120.7	133.8	143.5	144.5	145.1
July	126.4	120.7	133.1	143.4	143.5	145.7 (P)
August	127.7	120.9	132.8	143.6	143.7	145.2 (P)
September	128.6	121.8	132.9	143.5	144.4	146.0 (P)
October	129.3	123.5	132.5	143.3	144.5	
November	126.6	125.3	132.3	143.0	143.8	
December	124.7	125.0	132.3	143.3	143.7	
Annual Average	123.0	122.2	130.6	141.6	144.4	
(c) Repair and Maintenance						
January	116.0	122.1	125.2	134.3	140.3	141.4
February	117.2	122.0	126.1	135.7	141.2	142.2
March	117.9	121.6	126.4	136.7	142.6	142.7
April	119.2	121.2	128.4	137.6	143.1	143.0
May	120.4	121.0	131.0	138.5	143.0	143.4
June	121.2	120.7	132.2	139.6	142.3	142.9
July	122.9	120.6	132.9	140.4	141.9	143.1 (P)
August	123.7	121.7	133.4	141.2	141.8	143.7 (P)
September	123.8	122.8	133.7	140.9	141.9	143.9 (P)
October	124.7	123.9	133.7	141.1	142.0	
November	123.5	125.2	134.2	140.9	142.0	
December	122.4	125.0	133.8	140.7	141.3	
Annual Average	121.1	122.3	130.9	139.0	142.0	
(d) All Work						
January	115.3	122.5	124.6	134.2	141.8	142.9
February	116.9	122.0	125.2	135.9	142.2	143.3
March	117.9	121.6	125.9	137.4	143.5	144.1
April	119.2	121.0	128.5	139.2	143.8	143.2
May	121.0	120.9	131.0	140.2	143.3	143.2
June	122.3	120.7	132.6	141.3	142.8	143.1
July	124.4	120.6	132.4	141.5	142.0	143.5 (P)
August	125.7	121.1	132.5	141.9	142.4	143.7 (P)
September	126.2	122.1	132.5	141.7	142.7	144.3 (P)
October	126.9	123.4	132.2	141.6	142.8	
November	125.0	124.9	132.4	141.3	142.3	
December	123.5	124.7	132.0	141.5	141.9	
Annual Average	122.0	122.1	130.2	139.8	142.6	

Note: These indices are weighted averages of Producer Price Indices. They do not include electrical or mechanical engineering materials.

Source ONS/BIS

PRICES

Table 2: Price Indices of Construction Materials

United Kingdom

	2012				2013			
	Sep	Oct	Nov	Dec	Jan	Feb	Mar	
AGGREGATES								
Crushed rock	- including levy	120.5	118.9	118.7	119.5	117.8	117.4	118.8
	- excluding levy	119.2	118.5	118.3	119.2	118.7	116.9	118.5
Sand & gravel	- including levy	132.5	132.6	134.0	136.6	141.7	140.9	136.7
	- excluding levy	133.1	134.0	135.7	138.5	138.4	137.7	133.7
Coated roadstone	- excluding levy	151.3	151.9	152.4	150.7	154.9	150.8	151.4
CEMENT AND CONCRETE								
Cement **		145.0	144.8	144.4	144.5	145.2	145.2	145.0
Ready-mixed concrete **		117.9	118.0	117.4	117.6	119.3	119.2	119.3
Pre-cast concrete products **		122.9	122.8	122.5	122.6	122.8	123.5	123.4
of which : Blocks, bricks, tiles & flagstones **		127.8	127.7	127.4	128.0	127.9	128.8	128.7
Concrete reinforcing bars		159.0	158.8	156.9	157.5	158.4	157.7	154.3
CLAY PRODUCTS								
All Bricks **		125.5	125.6	125.4	125.1	126.8	126.0	126.4
Ceramic tiles *		94.0
Ceramic sanitaryware *		159.6
TIMBER AND JOINERY								
Imported sawn or planed wood		151.2	150.6	148.3	148.0	148.6	148.8	150.6
Imported plywood		121.8	121.9	122.1	119.8	120.0	121.0	122.8
Sawn wood **		145.1	144.4	142.4	142.7	142.5	143.7	144.3
Particle Board **		141.8	142.6	145.4	145.6	146.6	146.8	147.6
Builders woodwork **		132.0	131.7	131.5	131.6	131.8	131.7	131.7
of which : Doors & windows **		136.9	136.4	135.4	135.8	135.5	135.5	135.2
METAL PRODUCTS								
Fabricated structural steel		128.1	126.2	124.1	124.7	124.9	123.9	125.3
Doors & windows **		101.1	101.2	100.9	100.7	100.8	101.1	101.1
Central heating boilers **		118.6	118.6	118.6	118.6	118.6	118.6	121.2
Taps and Valves for sanitaryware *	
PLASTIC PRODUCTS								
Pipes and fittings (rigid) **		133.9	134.2	135.0	134.2	133.8	133.9	135.0
Pipes and fittings (flexible) **		137.0	138.8	138.4	138.2	138.4	139.2	140.7
Sanitaryware *		118.6	118.6	118.6	118.6	118.6	119.9	120.3
Doors & windows **		113.1	112.9	112.6	115.0	115.0	114.9	115.0
OTHER BUILDING MATERIALS								
Asphalt products *	
Insulating materials (thermal or acoustic) **		118.2	118.4	118.5	118.0	118.8	119.9	120.6
Paint (aqueous) **		134.0	133.9	132.7	132.6	134.1	138.1	138.5
Paint (non-aqueous) **		130.5	130.8	130.9	131.2	132.7	134.5	134.5
Lighting equipment for buildings *	
Lighting equipment for roads **		114.5	114.4	114.4	114.4	114.4	114.4	114.4
Electric water heaters *		148.5	148.4	147.9	147.8	147.7	147.6	147.9
Kitchen furniture **		117.0	117.0	116.7	116.1	116.1	116.2	116.1

Notes : 1. Most of these indices, which are compiled by the Office for National Statistics, are a selection of producer price indices.

The complete list is available online at www.statistics.gov.uk, by searching for the reference MM22.

*The Office for National Statistics state that these Indices are based on relatively few quotes and in the long term should not be relied upon for contractual purposes.

** These index values are considered less reliable mainly due to lack of market coverage.

2005=100

Apr	May	Jun	Jul	Aug (P)	Sep (P)	
						AGGREGATES
118.6	118.8	117.1	117.8	116.0	116.0	Crushed rock - including levy
118.3	118.6	116.5	118.2	116.7	116.7	- excluding levy
137.0	136.6 (R)	133.8 (R)	140.0	136.8	136.8	Sand & gravel - including levy
133.9	135.1	135.5	141.2	138.8	138.8	- excluding levy
148.3	148.6	150.9	151.5	153.7	153.7	Coated roadstone - excluding levy
						CEMENT AND CONCRETE
145.5	145.3	145.9	145.7	145.5	145.4	Cement **
118.9	119.0	119.0	121.2	121.3	121.6	Ready-mixed concrete **
124.6	125.0	125.3	124.8	124.9	125.1	Pre-cast concrete products **
130.3	130.9	130.8	130.2	130.1	130.5	of which : Blocks, bricks, tiles & flagstones **
154.2	153.9	154.1	152.7 (P)	161.0	159.8	Concrete reinforcing bars
						CLAY PRODUCTS
126.3	126.6	126.1	124.7	125.6	125.8	All Bricks **
..	Ceramic tiles *
..	Ceramic sanitaryware *
						TIMBER AND JOINERY
155.8	157.5	157.2	157.3	157.0	156.6	Imported sawn or planed wood
124.1	126.5	125.1	120.4	121.2	119.9	Imported plywood
144.0	144.5	144.1	145.2	147.7	147.6	Sawn wood **
147.2	145.1	147.5	147.5	148.2	148.2	Particle Board **
132.0	131.2	131.2	131.3	131.8	131.9	Builders woodwork **
135.9	133.5	133.5	133.5	133.5	134.2	of which : Doors & windows **
						METAL PRODUCTS
126.1	124.7	123.8	124.9 (P)	121.5	120.9	Fabricated structural steel
101.1	101.1	101.1	101.1	101.0	101.0	Doors & windows **
121.4	121.4	Central heating boilers **
..	..	178.0	177.9	179.0	180.3	Taps and Valves for sanitaryware *
						PLASTIC PRODUCTS
134.9	134.8	135.5	138.2	142.1	136.7	Pipes and fittings (rigid) **
140.4	140.4	139.5	139.4	140.4	140.6	Pipes and fittings (flexible) **
120.3	120.3	120.3	120.3	120.8	120.8	Sanitaryware *
115.0	115.1	115.1	115.7	116.2	116.2	Doors & windows **
						OTHER BUILDING MATERIALS
..	Asphalt products *
120.2	120.4	120.5	121.3	121.1	120.6	Insulating materials (thermal or acoustic) **
137.3	136.7	137.4	137.4	137.1	137.1	Paint (aqueous) **
133.5	133.7	133.5	133.1	133.0	133.0	Paint (non-aqueous) **
..	Lighting equipment for buildings *
114.4	114.4	114.4	114.6	114.8	114.8	Lighting equipment for roads **
148.6	150.5	149.9	149.8	149.5	149.6	Electric water heaters *
116.3	117.0	117.0	117.4	117.2	117.2	Kitchen furniture **

Source : ONS

Note: Due to the change from SIC03 to SIC07 the composition of the Aggregate and Coated Roadstone (excluding levy) indices was altered. Previous indices are available from earlier editions of these tables.

PRICES

Table 3: Price Indices of Construction Materials - Annual Averages

United Kingdom		2005=100					
		2007	2008	2009	2010	2011	2012
AGGREGATES							
Crushed rock	- including levy	110.0	115.5	121.0	121.2
	- excluding levy	103.1	110.8	121.0	120.6
Sand & gravel	- including levy	116.2	121.1	121.8	131.0
	- excluding levy	115.8	121.1	121.5	132.4
Coated roadstone	- including levy	113.8	130.0	140.8
	- excluding levy	113.7	129.7	140.4	152.2
Previous Index Crushed rock	- including levy	95.2	103.4	112.3
	- excluding levy	93.6	100.6	108.4
Previous Index Sand & Gravel	- including levy	109.9	117.5	112.0
	- excluding levy	110.9	116.3	107.5
CEMENT AND CONCRETE							
Cement		114.7	128.4	138.5	133.2	135.3	144.0
Ready-mixed concrete		106.7	113.4	110.8	110.5	113.8	118.0
Plasterboard etc		101.8	104.7
Pre-cast concrete products		110.6	114.4	118.7	117.4	120.9	122.7
	of which: Blocks, bricks, tiles & flagstones	112.8	115.4	121.1	121.0	125.2	128.0
Concrete re-inforcing bars		129.8	158.3	125.9	144.6	168.6	163.6
Fibre Cement Products		116.8	124.2
CLAY PRODUCTS							
All Bricks		111.1	109.0	117.2	118.8	119.3	124.2
Ceramic tiles		84.8	81.0	82.6	90.1	91.0	..
Ceramic sanitaryware		112.6	119.9	130.7	134.4	145.9	..
TIMBER AND JOINERY							
Imported sawn or planed wood		127.9	152.5	154.0	150.9
Imported plywood		110.2	119.0	116.9	120.9
Previous Index Imported Softwood		133.6	123.6	127.5
Previous Index Imported Plywood		106.5	120.7	124.1
Sawn Wood		122.0	127.8	118.7	135.1	141.7	143.0
Particle Board		112.7	113.8	111.4	117.3	133.0	141.0
Builders woodwork		108.0	113.6	119.7	125.5	129.8	131.8
	of which						
	Doors & windows	108.7	116.7	127.1	130.9	136.6	136.4
METAL PRODUCTS							
Fabricated structural steel		118.1	137.2	106.0	117.9	132.3	128.5
Doors & windows		87.5	87.0	89.8	91.2	95.2	101.4
Screws etc		105.9	106.6
Other builders' ironmongery		105.3	108.5	123.6
Central heating boilers		105.0	106.3	109.8	113.4	117.6	118.8
Central heating pumps		114.5	120.2
Taps & valves (domestic)		..	136.6	152.1	158.2	168.9	..
Metal sanitaryware		108.3	106.3	124.6
Copper pipes		163.2	154.1
PLASTIC PRODUCTS							
Pipes and fittings (rigid)		112.2	118.1	121.4	121.5	127.3	132.0
Pipes and fittings (flexible)		110.6	115.3	129.9	130.3	134.1	137.1
Sanitaryware		102.6	112.0	113.7	114.7	116.1	118.1
Doors & windows		103.5	106.2	107.9	108.1	110.8	112.8
Floor covering		109.8
OTHER BUILDING MATERIALS							
Asphalt products		132.2	140.4	151.4	162.1
Insulating materials (thermal or acoustic)		106.0	105.6	104.0	103.2	109.6	117.6
Paint (aqueous)		104.6	112.7	118.3	133.6
Paint (non-aqueous)		102.6	110.0	113.0	114.0	121.9	130.5
Lighting equipment for buildings		..	102.3	107.4	107.5
Lighting equipment for roads		100.9	105.2	112.3	110.6	110.7	114.1
Electric heating apparatus		105.4	112.0
Electric water heaters		119.8	122.3	132.6	136.7	142.5	146.9
Kitchen furniture		99.7	103.6	106.6	109.1	112.3	116.9

Source : ONS

Note 1: Due to the change from SIC03 to SIC07 the composition of the Aggregate and Wood Indices has been altered. As such we will publish the Previous Indices alongside the Current Indices.

Note 2: These indices, which are compiled by the Office for National Statistics, are a selection of producer price indices. The complete list is published monthly by the ONS in the Business Monitor MM22.

MINING AND QUARRYING

Table 4 : Sales of Sand and Gravel in Great Britain

Great Britain		Thousand tonnes					
	Sand		Gravel	Sand & Gravel	Sand, Gravel & Hoggin	Sand & Gravel	of which
	for Building	for Concreting	for Concreting & other uses	for Coating	for Fill	Total	Marine-Dredged
2002	11,152	30,334	35,642	2,106	6,279	85,513	12,833
2003	11,474	31,349	31,725	1,493	6,498	82,539	12,249
2004	11,017	32,366	30,184	1,380	6,399	81,346	12,996
2005	12,419	30,704	30,648	1,569	5,173	80,513	13,025
2006	9,499	29,893	31,963	2,346	4,195	77,896	13,974
2007	8,649	29,803	31,114	1,695	4,254	75,515	13,777
2008	8,864	28,922	28,297	74,651	12,582
2009	7,270	21,582	58,482	9,589
2010	6,074	19,887	54,530	9,341
2011	6,041	23,489	57,062	11,169
2012	6,499	21,994	23,077	57,972	10,320
2007 Q2	2,305	7,762	8,202	432	1,179	19,880	3,596
Q3	2,304	7,829	8,191	398	1,162	19,884	3,675
Q4	1,959	7,293	7,479	422	1,009	18,162	3,329
2008 Q1	2,151	7,156	7,286	379	1,180	18,152	3,035
Q2	2,385	7,724	7,668	456	2,041	20,274	3,541
Q3	2,279	7,644	7,091	19,341	3,337
Q4	2,049	6,398	6,252	490	1,695	16,884	2,669
2009 Q1	1,727	5,313	5,330	695	1,566	14,631	2,389
Q2	1,916	5,637	5,756	15,359	2,637
Q3	1,992	5,598	14,878	2,457
Q4	1,635	5,034	1,432	13,614	2,106
2010 Q1	1,539	4,952	13,711	2,131
Q2	1,585	4,983	13,940	2,444
Q3	1,584	5,268	14,112	2,592
Q4	1,366	4,684	12,767	2,174
2011 Q1	1,572	5,665	14,150	2,746
Q2	1,579	6,127	5,291	14,831	2,923
Q3	1,533	6,085	5,160	14,684	2,937
Q4	1,357	5,612	4,719	13,397	2,563
2012 Q1	1,481	5,635	5,039	13,894	2,675
Q2	1,712	5,608	5,633	14,474	2,609
Q3	1,778	5,612	6,259	15,192	2,749
Q4	1,528	5,139	6,146	14,412	2,287
2013 Q1	1,380	4,854	5,107	12,957	2,260
Q2	1,570	4,665	4,908	13,662	2,681

Note : The figures above are from a quarterly sample inquiry whereas those below are from the Annual Minerals Raised Inquiry, a census.

The two inquiries differ because some respondents are only able to provide estimated information for the quarterly inquiry.

1999	11,356	31,730	31,614	2,585	10,924	88,209	13,424
2000	11,758	31,167	31,797	2,461	12,051	89,234	14,356
2001	11,515	31,656	35,135	2,257	7,647	88,210	13,611
2002	11,190	31,224	32,434	2,031	5,842	82,721	12,832
2003	11,851	31,411	30,236	1,766	4,957	80,221	12,131
2004	10,688	32,529	32,346	2,437	8,058	86,057	12,996
2005	11,558	29,848	32,163	2,172	6,651	82,392	13,024
2006	9,907	29,815	31,002	2,648	6,869	80,242	13,974
2007	9,877	30,202	29,350	2,636	6,436	78,501	13,777
2008	8,527	26,885	23,388	2,222	11,106	72,127	12,621
2009	6,296	21,570	19,553	2,270	6,021	55,709	9,592
2010	6,110	20,947	18,540	2,112	6,621	54,330	9,341
2011	6,140	22,591	18,712	1,913	5,659	55,015	11,189

MINING AND QUARRYING

Table 5 : Sales of Sand and Gravel by Standard region, Wales and Scotland

	Sand for Building	Sand for Concreting	Gravel for Concreting & other uses	Sand & Gravel for Coating	Sand, Gravel & Hoggin for Fill	Sand & Gravel Total	of which Marine- Dredged
(a) Q2 2013							
North East	47	..	598	7	133
Yorkshire & the Humber	129	310	243	..	168
North West	159	101	2	17	80	359	29
West Midlands	199	586	678	1,930	0
East Midlands	115	459	470	1,292	0
East of England	181	746	703	..	488
South East	358	1,056	1,471	33	312	3,230	2,150
South West	185	655	220	..	326
Wales	93	..	62	0	..	354	158
Scotland	104	449	461	82	73	1,169	0
Great Britain	1,570	4,665	4,908	13,662	2,681
of which marine-dredged	165	1,139	1,288	2,681	
(b) Q2 2012							
North East	23	..	923
Yorkshire & the Humber	139	309	280	..	57
North West	197	211	..	19	..	480	20
West Midlands	198	635	624	1,564	0
East Midlands	125	663	418	1,366	0
East of England	258	1,018	991	..	128
South East	331	1,264	..	40	..	3,399	2,102
South West	175	666	218	1,268	128
Wales	114	..	70	347	158
Scotland	152	524	513	141	267	1,597	0
Great Britain	1,712	5,608	5,633	14,474	2,609
of which marine-dredged	162	1,233	1,173	2,609	

Note : Regions refer to Government Office Regions

MINING AND QUARRYING

Thousand tonnes

	Sand		Gravel	Sand & Gravel	Sand, Gravel & Hoggin	Sand & Gravel	of which
	for Building	for Concreting	for Concreting & other uses	for Coating	for Fill	Total	Marine-Dredged
(c) Annual 2012							
North East	112	..	3,657
Yorkshire & the Humber	492	1,267	1,163	..	213
North West	705	877
West Midlands	741	2,629	2,451	6,233	0
East Midlands	475	2,528	5,344	0
East of England	945	3,898	3,773	..	579
South East	1,206	4,746	..	166	..	13,575	8,208
South West	682	2,618	5,088	534
Wales	397	1,446	614
Scotland	744	2,089	2,607	519	1,022	6,981	0
Great Britain	6,499	21,994	23,077	57,972	10,320
of which marine-dredged	591	4,608	4,892	10,320	
(d) Annual 2011							
North East	100	270
Yorkshire & the Humber	519	1,374	1,277	..	393
North West	754	123	..	1,940	96
West Midlands	505	2,458	2,358	5,695	0
East Midlands	443	2,594	1,962	5,673	0
East of England	950	4,184	3,586	..	786
South East	1,050	5,839	6,509	182	..	14,585	8,836
South West	555	2,779	5,795	502
Wales	428	1,671	740
Scotland	737	2,103	2,467	451	859	6,617	0
Great Britain	6,041	23,489	57,062	11,169
of which marine-dredged	514	5,418	11,169	

Note : Regions refer to Government Office Regions

MINING AND QUARRYING

Table 6 : Sales of Sand and Gravel by English & Welsh County and Scottish Region

Thousand tonnes

	2012				2013	
	Quarter 1	Quarter 2	Quarter 3	Quarter 4	Quarter 1	Quarter 2
NORTH EAST
Northumberland	550	1,014	1,231	1,231	912	769
Tyne and Wear *	..	17	21	18	11	14
Durham	53	52	51	41
Cleveland *
YORKSHIRE & THE HUMBER
North Yorkshire	448	423	437	389	355	397
West Yorkshire
South Yorkshire	174	178	178	..	158	..
Humberside *	..	164	172	154	141	221
NORTH WEST	..	480	466	464	377	359
Cumbria	147	141	137	137	102	72
Lancashire	33	30	29	29	28	..
Merseyside *	..	20	24	27	23	29
Greater Manchester	40	39	38	38	6	..
Cheshire	247	250	238	233	218	232
WEST MIDLANDS	1,441	1,564	1,632	1,596	1,479	1,930
Shropshire	175	188	196	193	175	198
Staffordshire	906	975	1,016	998	1,053	1,419
West Midlands	..	124	132	123	110	153
Warwickshire	..	107	108	108
Hereford & Worcester	156	170	180	174
EAST MIDLANDS	1,301	1,366	1,374	1,303	1,257	1,292
Derbyshire	240	249	251	241	251	254
Nottinghamshire	328	348	345	328	357	365
Leicestershire	238
Northamptonshire	47
Lincolnshire	448	470	500	467	437	469
EAST OF ENGLAND
Cambridgeshire	382	393	397	353	342	336
Norfolk	318	335	341	294	226	281
Suffolk *	357	284	249	290
Essex *
Bedfordshire	271	291	292	254	282	359
Hertfordshire	239	..
SOUTH EAST	3,549	3,399	3,560	3,067	3,027	3,230
Buckinghamshire	94	77	108	..
Oxfordshire	93	88	101	98	123	136
Berkshire	209	193	205	186	168	126
Greater London *	1,105	970	1,038	910	1,017	1,119
Surrey	234	228	239	216	154	142
Kent *	940	956	964	744	681	766
Sussex East *
Sussex West *	..	194	202	183	169	255
Hampshire *	574	564	613	559	496	465
Isle of Wight

Note : Regions refer to Government Office Regions

* Includes marine-dredged.

MINING AND QUARRYING

Thousand tonnes

	2012				2013	
	Quarter 1	Quarter 2	Quarter 3	Quarter 4	Quarter 1	Quarter 2
SOUTH WEST	1,274	1,268	1,358	1,188
Gloucestershire	185	180	186	165	171	157
Wiltshire	170	166	173	160	221	201
Avon *
Somerset *
Dorset *
Devon *	..	171	178	160	173	164
Cornwall	305	304
ENGLAND	11,949	12,530	13,111	11,955	11,304	12,139
WALES	360	347	354	385	384	354
Clwyd	145	120	116	149	145	116
Gwynedd *	33	..	35	36	39	36
Powys	1	1	1	2	2	1
Dyfed *
Glamorgan West *	..	25	23	21	14	22
Glamorgan Mid	0	0	0	0	0	0
Glamorgan South *
Gwent *
SCOTLAND	1,585	1,597	1,727	2,072	1,269	1,169
South of Scotland	96	100	109	161	93	92
North East Scotland	192	197	208	298	144	129
Highlands	140	145	151	209	165	126
Island Areas	10	10	13	11	13	11
East Central Scotland	293	290	307	258	112	92
West Central Scotland	508	500	552	546	406	392
Tayside and Fife	346	355	387	589	336	327
GREAT BRITAIN	13,894	14,474	15,192	14,412	12,957	13,662

Note : Regions refer to Government Office Regions

* Includes marine-dredged.

MINING AND QUARRYING

Table 7 : Slate - Production, Deliveries and Stocks

Great Britain

Tonnes

	Production			Deliveries			Stocks (a)			Deliveries
	Roofing (b)	Other (c)	Powder & Granules	Roofing (b)	Other (c)	Powder & Granules	Roofing (b)	Other (c)	Powder & Granules	Fill & Other Uses
2001	30,770	14,834	47,521	33,052	13,586	47,588	3,159	8,465	2,799	383,353
2002	32,182	18,348	44,424	32,653	19,069	43,947	2,674	7,850	3,275	498,212
2003	34,471	15,623	29,003	34,700	14,576	29,240	2,477	8,849	3,416	669,818
2004
2005	2,824	10,281	5,347	..
2006	..	61,612	22,967	..	64,037	22,719	..	6,454	4,274	860,395
2007	..	65,260	19,141	..	62,646	19,431	2,563	2,521	3,746	..
2008	..	59,644	16,915	..	58,129	18,402	..	2,749	2,253	..
2009	..	33,759	9,150	22,555	34,322	10,637	2,420	2,186	766	615,346
2010	..	28,001	27,355	3,063	..	582,111
2011	..	30,665	30,437	3,245	..	662,003
2012	..	29,634	28,083	3,262	..	607,127
2005 Q3
Q4	..	13,635	7,448	..	6,194	7,635	2,824	10,281	5,347	124,188
2006 Q1	..	11,594	6,575	..	12,879	6,406	3,170	8,967	5,440	195,762
Q2	..	14,804	5,051	..	14,983	5,257	3,079	7,424	3,990	223,696
Q3	..	16,170	5,194	..	16,803	5,094	..	6,792	4,090	251,314
Q4	..	19,044	6,147	..	19,372	5,962	..	6,454	4,274	189,623
2007 Q1	..	17,787	5,571	..	16,829	5,036	6,984	4,996	4,571	376,876
Q2	..	16,577	4,315	..	14,765	4,875	3,066	5,850	4,011	346,426
Q3	..	16,017	4,672	..	15,475	4,929	2,977	6,391	3,754	..
Q4	..	14,879	4,583	..	15,577	4,591	2,563	2,521	3,746	255,249
2008 Q1	..	18,608	4,282	..	18,071	4,414	..	3,059	3,594	246,495
Q2	..	15,465	4,738	..	14,457	4,862	..	3,801	3,484	..
Q3	..	13,811	3,843	..	13,841	5,511	3,851	2,749	1,816	..
Q4	..	11,760	4,052	..	11,760	3,615	..	2,749	2,253	..
2009 Q1	..	7,370	2,128	5,315	7,688	2,724	..	2,431	1,658	148,722
Q2	5,084	9,124	2,046	5,328	9,319	3,385	4,142	2,236	318	169,661
Q3	5,503	8,263	2,046	6,534	8,267	2,163	3,111	2,232	201	154,862
Q4	4,687	9,002	2,930	5,378	9,048	2,365	2,420	2,186	766	142,101
2010 Q1	..	6,772	6,662	2,296	..	88,805
Q2	..	7,517	7,388	..	2,049	3,284	683	175,098
Q3	..	7,335	7,184	..	1,326	3,332	281	159,574
Q4	4,907	6,377	..	4,909	6,121	3,063	..	158,634
2011 Q1	4,736	6,516	3,314	4,449	6,504	3,399	..	3,029	..	198,547
Q2	4,677	8,167	3,370	4,630	8,187	3,094	2,012	3,009	472	216,524
Q3	..	9,851	9,732	3,128	..	139,359
Q4	..	6,131	6,014	3,245	..	107,573
2012 Q1	..	9,247	8,829	2,646	..	131,311
Q2	..	8,216	9,677	1,154	..	177,748
Q3	..	6,219	6,167	1,206	..	146,152
Q4	..	5,952	3,410	3,262	..	151,916
2013 Q1	..	6,052	9,220	802	157,215
Q2	..	8,105	7,969	736	180,268
Q3	..	10,261	10,749	537	169,995

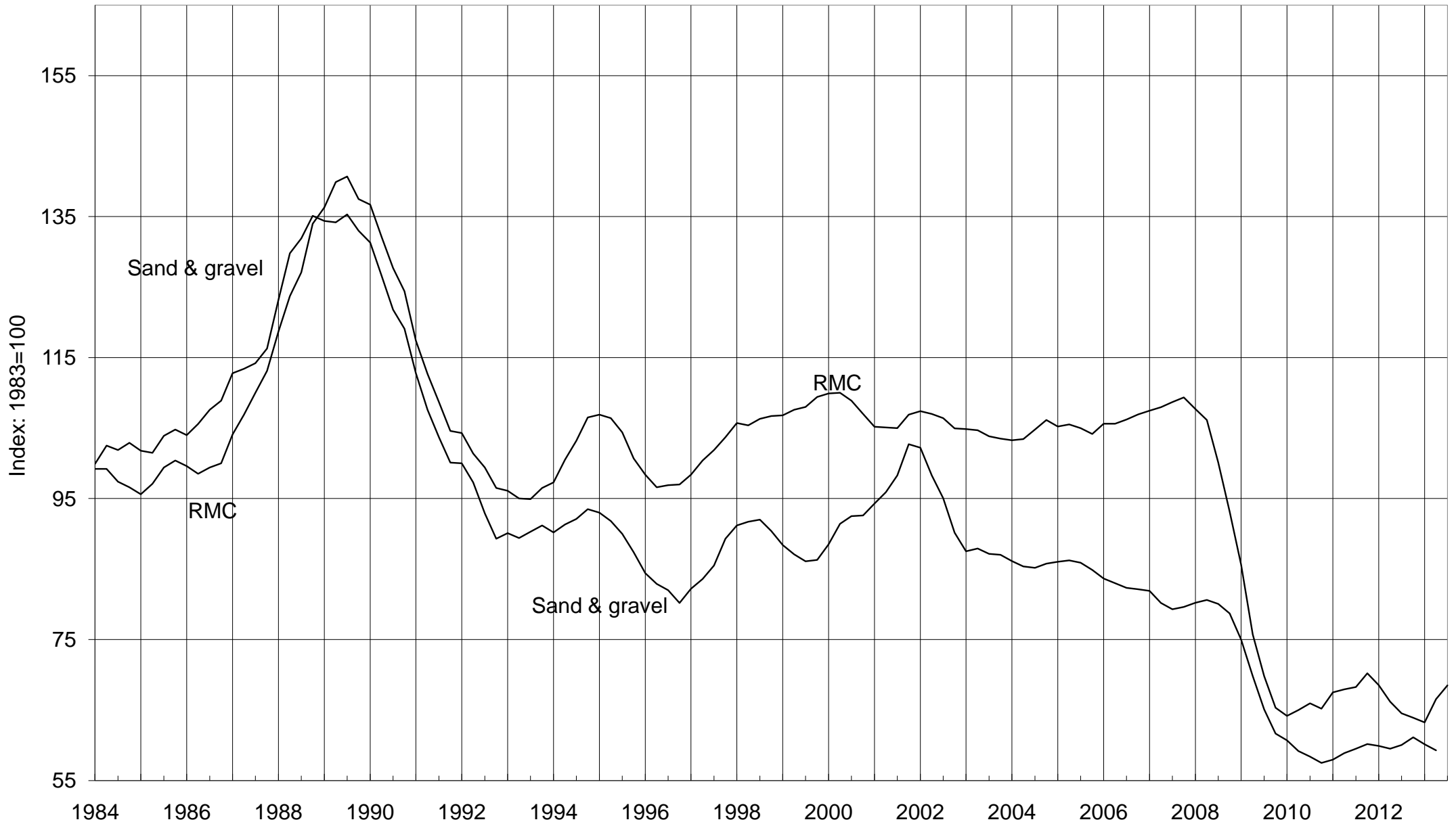
Note : 1) We have improved our sampling panel to include some new sites and have removed some non-pure slate sites. In line with the Code of Practice we have revised the data for Q2, Q3 and Q4 2010.

2) From Q1 1995, the coverage of 'powder & granules' has been extended to include non-quarry manufacture; and 'crude blocks' are included in 'other' manufacture slate.

- (a) Refers to stocks at the end of the period.
- (b) Consists of all slate tiles which could be used as roofing tiles.
- (c) Consists of all slate products for cladding and decorative uses

Deliveries of Sand & Gravel and RMC

4-quarter moving average



The data is taken from Tables 4 & 13

Table 8 : Cement & Clinker - Production and Deliveries

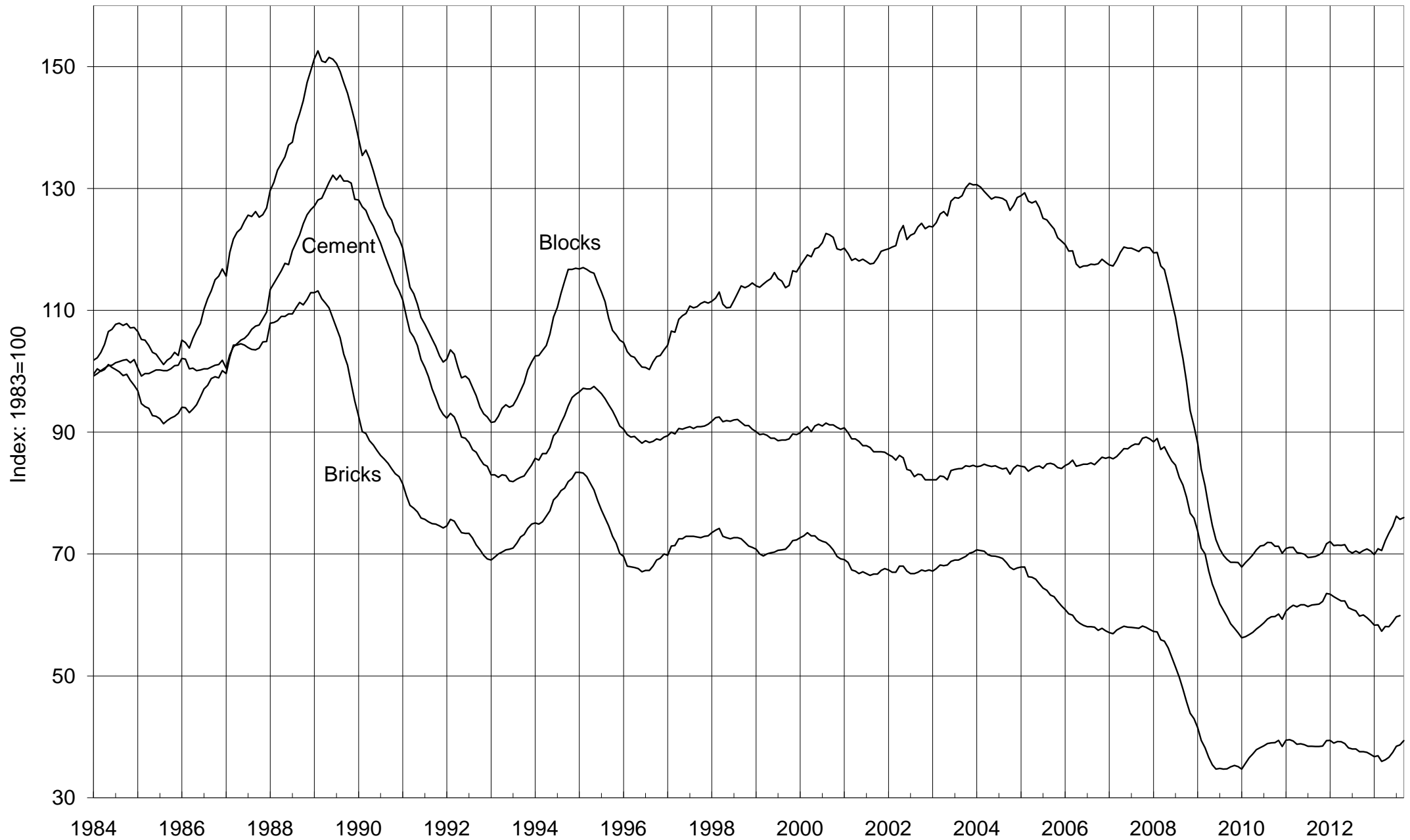
Great Britain		Thousand tonnes							
Cement								Clinker	
	Production	Exports <i>(from GB)</i>	Deliveries <i>(into GB from GB production)</i>	Imports <i>(into GB)</i>		Cementitious Material		Production	
				by 'Manuf.	by Others**	other	total		
2007	11,887	74	11,638	255	1,121	2,769	15,783	10,227	
2008	10,071	61	9,937	283	1,084	2,432	13,660	8,700	
2009	7,623	21	7,474	99	1,085	1,680	10,338	6,421	
2010	7,883	0	7,767	61	1,153	1,535	10,515	6,598	
2011	8,529	0	8,318	86	1,173	1,736	11,312	7,096	
2012	7,952	0	7,728	61	1,122	1,605	10,515	6,555	
2007	Q3	3,130	9	3,011	84	294	746	4,135	2,751
	Q4	2,891	16	2,787	69	259	681	3,796	2,643
2008	Q1	2,609	18	2,551	88	268	598	3,505	2,267
	Q2	2,803	18	2,816	94	327	682	3,917	2,366
	Q3	2,520	13	2,496	72	263	648	3,445	2,202
	Q4	2,139	12	2,074	29	226	505	2,793	1,865
2009	Q1	1,762	14	1,782	37	256	410	2,485	1,378
	Q2	2,004	1	1,970	21	279	451	2,721	1,587
	Q3	1,998	5	1,999	25	283	453	2,760	1,831
	Q4	1,859	1	1,723	17	268	366	2,373	1,624
2010	Q1	1,726	0	1,744	24	246	336	2,350	1,261
	Q2	2,157	0	2,154	8	345	416	2,923	1,745
	Q3	2,203	0	2,195	17	310	450	2,971	1,880
	Q4	1,796	0	1,674	12	252	332	2,270	1,713
2011	Q1	1,979	0	2,043	12	281	402	2,738	1,427
	Q2	2,245	0	2,165	25	319	448	2,956	1,791
	Q3	2,246	0	2,200	25	303	494	3,022	2,015
	Q4	2,059	0	1,909	24	270	392	2,595	1,863
2012	Q1	1,880	0	1,928	16	285	370	2,599	1,366
	Q2	2,073	0	1,974	13	277	389	2,653	1,736
	Q3	2,120	0	2,021	13	302	444	2,780	1,722
	Q4	1,879	0	1,805	20	257	400	2,483	1,731
2013	Q1	1,425	0	1,724	16	259 (R)	393 (R)	2,393 (R)	1,198
	Q2	2,212	0	2,171 (R)	17	310	518	3,016	1,821
2012	Aug	682	0	687	4	547
	Sep	701	0	642	4	545
	Oct	692	0	733	4	566
	Nov	674	0	668	8	536
	Dec	513	0	404	8	629
2013	Jan	423	0	467	4	290
	Feb	617	0	620	8	427
	Mar	676	0	622	4	479
	Apr	693	0	712	4	622
	May	759	0	736	9	631
	Jun	760	0	724	4	568
	Jul	795	0	800	10	598
	Aug	779	0	715	17	672

NB Where the coverage is for Great Britain, the figures for imports & exports are defined accordingly and have been estimated.

Cementitious material covers cement itself, fly ash to EN 450 Part 1 where used as part of the cement in concrete (previously known as pulverised fuel ash (pfa) to BS 3892 Part 1) and ground granulated blast furnace slag (ggbs) to EN 15167 Part 1 (previously BS 6699) * Refers to stocks at end of period ** Estimated

Deliveries of Bricks, Blocks & Cement

12-month moving totals



The data is taken from tables 8, 9 and 11. See footnotes on table 11 concerning data from December 2011 to June 2012.

BRICKS

Table 9 : Bricks - Production, Deliveries and Stocks

Great Britain

		Production	Deliveries (from)	Stocks*	Production	Deliveries (from)	Stocks*
(a) Brick Type		<u>All Types</u>			<u>Commons</u>		
2008		1,929	1,796	1,105	246	242	151
2009		1,257	1,469	887	185	224	108
2010		1,430	1,606	702	182	194	94
2011		1,554	1,646	610	172	185	82
2012		1,459	1,551	515	137	166	52
2012	Q3	370	418	552	37	45	54
	Q4	311	345	515	33	35	52
2013	Q1	344	343	518	33	36	50
	Q2	390	460	447	35	45	41
	Q3 (P)	415	499	363	44	47	38
2012	September	129	132	552	14	15	54
	October	132	141	542	13	14	53
	November	116	132	523	12	13	52
	December	64	72	515	8	8	52
2013	January	101	96	520	10	11	51
	February	114	116	519	11	12	51
	March	130	131	518	12	13	50
	April	127	142	503	13	14	49
	May	129	159	473	10	16	44
	June	133	158	447	12	15	41
	July	133	182	399	16	18	39
	August	134	156	377	13	14	38
	September (P)	148	162	363	15	15	38
(b) Material Type		<u>All Materials</u>			<u>Clay#</u>		
2008		1,929	1,796	1,105	1,814	1,676	1,093
2009		1,257	1,469	887
2010		1,430	1,606	702
2011		1,554	1,646	610
2012		1,459	1,551	515
2012	Q3	370	418	552
	Q4	311	345	515
2013	Q1	344	343	518
	Q2	390	460	447
	Q3 (P)	415	499	363
2012	September	129	132	552
	October	132	141	542
	November	116	132	523
	December	64	72	515
2013	January	101	96	520
	February	114	116	519
	March	130	131	518
	April	127	142	503
	May	129	159	473
	June	133	158	447
	July	133	182	399
	August	134	156	377
	September (P)	148	162	363

* Refers to stocks at end of period

#Sand-lime bricks are included with clay bricks

Millions

Production	Deliveries (from)	Stocks*	Production	Deliveries (from)	Stocks*	
						(a) Brick Type
Facings			Engineering			
1,514	1,386	895	170	168	58	2008
973	1,135	732	99	109	48	2009
1,124	1,280	570	124	132	39	2010
1,230	1,304	494	152	157	34	2011
1,172	1,239	425	150	146	38	2012
292	332	457	41	41	40	2012 Q3
248	277	425	30	33	38	Q4
274	273	426	37	34	41	2013 Q1
319	367	378	36	48	29	Q2
332	403	307	39	50	19	Q3 (P)
101	105	457	14	13	40	2012 September
105	114	448	13	13	41	October
92	105	432	12	13	40	November
51	58	425	5	7	38	December
77	75	428	13	10	41	2013 January
92	93	427	10	11	40	February
104	106	426	14	13	41	March
103	114	415	11	14	39	April
107	127	395	13	17	35	May
109	126	378	12	17	29	June
104	145	337	13	19	23	July
108	126	319	13	15	21	August
119	132	307	13	15	19	September (P)
						(b) Material Type
Sand-Lime#			Concrete			
..	115	120	11	2008
..	2009
..	2010
..	2011
..	2012
..	2012 Q3
..	Q4
..	2013 Q1
..	Q2
..	Q3 (P)
..	2012 September
..	October
..	November
..	December
..	2013 January
..	February
..	March
..	April
..	May
..	June
..	July
..	August
..	September (P)

Note: Data covering January 2009 to February 2011 were revised in the December 2011 edition of this bulletin. These data are included in this table. For more information on revisions, see the 'Pre-announcements and Summary of Revisions to Monthly Statistics of Building Materials and Components Publication' document on our website.

BRICKS

Table 10 : Brick Production, Deliveries and Stocks by English region, Wales and Scotland

	North East	Yorks & Humber	North West	West Midlands	East Midlands	East of England
				#		#
(a) Commons						
Production						
2012	10,289	40,963	..
Q3	..	631	..	2,599	10,654	..
Q4	2,443	9,629	..
2013 Q1	2,079	10,719	..
Q2	1,376	..	12,059	..
2013 August	4,297	..
Deliveries (from)						
2012	11,327	43,004	..
Q3	..	738	1,949	2,777	12,201	..
Q4	..	308	..	2,322	9,622	..
2013 Q1	..	597	1,673	..	11,554	..
Q2	2,196	3,027	16,675	..
2013 August	658	1,127	4,651	..
Stocks *						
2012	2,723	1,447	3,900	4,142	11,933	..
Q3	4,155	1,120	3,877	4,021	11,965	..
Q4	2,723	1,447	3,900	4,142	11,933	..
2013 Q1	2,349	1,442	3,923	3,740	12,120	..
Q2	2,636	1,293	3,103	3,235	7,489	..
2013 August	2,673	1,122	2,314	3,246	6,330	..
(b) Facings						
Production						
2012	342,094	..
Q3	..	17,805	12,493	71,525	88,946	..
Q4	13,044	..	85,159	..
2013 Q1	..	17,965	16,207	64,483	78,708	..
Q2	..	18,678	22,111	78,587	88,190	..
2013 August	..	6,351	6,314	26,118	32,475	..
Deliveries (from)						
2012	..	68,227	71,203	289,575	364,569	..
Q3	..	17,491	19,532	79,399	100,067	..
Q4	..	14,687	17,812	64,093	86,199	..
2013 Q1	..	13,839	17,258	62,277	87,343	..
Q2	..	19,954	21,564	86,515	113,522	..
2013 August	..	5,861	8,771	31,960	33,860	..
Stocks *						
2012	..	17,822	28,357	106,214	123,367	..
Q3	..	18,114	33,125	123,689
Q4	..	17,822	28,357	106,214	123,367	..
2013 Q1	..	21,948	27,306	108,420	114,669	..
Q2	..	20,672	27,853	100,492	89,337	..
2013 August	..	20,548	23,631	85,019	79,916	..
(c) Engineering #						
Production						
2012	86,776
Q3	24,005	0	..
Q4	16,982
2013 Q1	22,724
Q2
2013 August	0	..
Deliveries (from)						
2012	78,754
Q3	22,152
Q4	18,053
2013 Q1	18,274
Q2
2013 August	9,585
Stocks *						
2012	3,358	18,475
Q3	4,833	19,546
Q4	3,358	18,475
2013 Q1	3,419	22,925
Q2	2,658	15,393
2013 August	1,290	9,848

Note : Regions now use Government Office boundaries

* Refers to stocks at end of period.

South East	South West	England	Wales	Scotland	Great Britain	
#	#					
..	136,695	(a) Commons
..	37,140	Production
..	33,280	2012
..	32,648	Q3
..	35,487	Q4
..	857	12,834	2013 Q1
..	Q2
..	2013 August
..	166,284	Deliveries (from)
..	45,120	2012
..	35,358	Q3
..	35,556	Q4
..	45,043	2013 Q1
..	14,192	Q2
..	2013 August
..	51,883	Stocks *
..	1,393	54,009	2012
..	51,883	Q3
..	1,185	50,290	Q4
..	1,131	40,719	2013 Q1
..	1,124	37,750	Q2
..	2013 August
206,519	1,172,281	(b) Facings
52,403	292,483	Production
46,157	247,599	2012
44,972	274,034	Q3
55,225	318,529	Q4
17,878	108,286	2013 Q1
..	Q2
..	2013 August
204,075	1,238,790	Deliveries (from)
52,476	332,103	2012
43,344	277,290	Q3
41,756	272,937	Q4
56,901	366,936	2013 Q1
20,447	126,470	Q2
..	2013 August
..	424,953	Stocks *
..	457,403	2012
..	424,953	Q3
..	426,029	Q4
..	377,622	2013 Q1
..	318,927	Q2
..	2013 August
..	150,326	(c) Engineering #
..	40,812	Production
..	30,360	2012
..	0	37,395	Q3
..	0	35,577	Q4
..	0	13,201	2013 Q1
..	Q2
..	2013 August
..	146,308	Deliveries (from)
..	40,790	2012
..	32,562	Q3
..	34,285	Q4
..	0	47,667	2013 Q1
..	0	15,411	Q2
..	2013 August
..	38,081	Stocks *
..	40,283	2012
..	38,081	Q3
..	41,200	Q4
..	29,110	2013 Q1
..	20,625	Q2
..	2013 August

Note: Data covering January 2009 to February 2011 were revised in the December 2011 edition of this bulletin. These data are included in this table. For more information on revisions, see the 'Summary of Revisions to Monthly Statistics of Building Materials and Components Publication' document on our website.

BRICKS

Table 10 (cont'd) : Brick Production, Deliveries and Stocks by English region, Wales and Scotland

	North East	Yorks & Humber	North West	West Midlands	East Midlands	East of England
(d) All Bricks						
Production						
2011
2012
2012 Q2	119,896
Q3	96,878	99,600	..
Q4
2013 Q1	87,449
Q2
2012 August	30,792	34,557	..
September	32,567	32,594	..
October	33,862	32,976	..
November	21,717
December	26,239	..
2013 January	25,781	25,075	..
February	28,783
March	32,885	33,937	..
April	31,276	..
May	34,376
June	36,661	..
July
August	36,772	..
Deliveries (from)						
2011	111,066
2012	374,077
2012 Q2	96,286
Q3	102,599
Q4	82,867
2013 Q1
Q2
2012 August	37,101
September	32,822
October	34,391
November	9,651	30,906
December	17,570
2013 January	22,041
February	27,871
March
April	34,166
May	40,131
June
July	45,930
August	42,539
Stocks *						
2011	45,025	111,327
2012	35,615	128,229
2012 Q2	48,499	152,123
Q3	41,835	146,402
Q4	35,615	128,229
2013 Q1	34,648	134,025
Q2	33,614	118,567
2012 August	41,395	146,657
September	41,835	146,402
October	41,598	145,873
November	39,055	136,684
December	35,615	128,229
2013 January	34,150	131,969
February	34,171	132,881
March	34,648	134,025
April	34,912	132,555
May	34,119	126,800
June	33,614	118,567
July	30,501	104,848
August	27,235	98,017

Note : Regions now use Government Office boundaries

* Refers to stocks at end of period.

BRICKS

Thousands

South East	South West	England	Wales	Scotland	Great Britain	
						(d) All Bricks
						Production
..	1,554,270	2011
..	1,459,302	2012
..	407,746	2012 Q2
..	370,435	Q3
..	311,239	Q4
..	344,077	2013 Q1
..	389,593	Q2
..	114,914	2012 August
..	129,047	September
..	131,559	October
..	115,874	November
..	63,806	December
..	100,870	2013 January
..	113,515	February
..	129,692	March
..	127,269	April
..	129,497	May
..	132,827	June
..	133,160	July
..	134,321	August
						Deliveries (from)
..	1,645,730	2011
..	1,551,382	2012
..	396,887	2012 Q2
..	418,013	Q3
..	345,210	Q4
..	342,778	2013 Q1
..	459,646	Q2
..	146,186	2012 August
..	132,068	September
..	141,460	October
..	131,642	November
..	72,108	December
..	95,957	2013 January
..	115,542	February
..	131,279	March
..	142,226	April
..	158,938	May
..	158,482	June
..	181,528	July
..	156,073	August
						Stocks *
..	609,939	2011
..	514,917	2012
..	599,307	2012 Q2
..	551,695	Q3
..	514,917	Q4
..	517,519	2013 Q1
..	447,451	Q2
..	554,722	2012 August
..	551,695	September
..	541,783	October
..	523,215	November
..	514,917	December
..	519,824	2013 January
..	519,114	February
..	517,519	March
..	502,562	April
..	473,111	May
..	447,451	June
..	399,058	July
..	377,302	August

Note: Data covering January 2009 to February 2011 were revised in the December 2011 edition of this bulletin. These data are included in this table. For more information on revisions, see the 'Summary of Revisions to Monthly Statistics of Building Materials and Components Publication' document on our website.

CONCRETE PRODUCTS

Table 11 : Concrete Blocks - Production, Deliveries and Stocks

Great Britain

	All Types			Dense		
	Production	Deliveries (from)	Stocks*	Production	Deliveries (from)	Stocks*
2002	91,474	91,342	9,014	35,744	36,019	3,963
2003	95,675	96,383	8,513	36,775	37,175	3,684
2004	96,256	94,854	10,088	37,677	37,444	3,690
2005	89,997	89,551	9,680	36,188	36,473	3,465
2006	87,510	87,015	..	34,956	34,741	..
2007	89,951	88,746	..	36,686	35,396	..
2008	67,743	67,136	8,920	29,675	29,889	3,498
2009	50,394	50,639	8,320	22,607	22,748	3,291
2010	53,629	51,758	10,152	22,393	21,731	3,833
2011	54,583	52,901	10,810	22,940	22,101	4,486
2012	51,693	52,021	10,700	21,551	22,323	3,808
2008 Q2	20,231	19,714	11,977	8,767	8,677	5,107
Q3	14,894	16,309	10,224	7,131	7,576	4,479
Q4	11,487	12,259	8,920	5,214	5,783	3,498
2009 Q1	12,094	11,649	9,161	5,635	5,438	3,628
Q2	13,463	13,191	9,455	6,192	6,032	3,821
Q3	12,771	13,924	8,203	5,811	6,255	3,390
Q4	12,066	11,874	8,320	4,969	5,023	3,291
2010 Q1	12,614	12,072	8,740	5,033	4,896	3,333
Q2	14,956	14,753	8,990	6,343	6,176	3,513
Q3	15,172	14,343	9,832	6,477	6,125	3,837
Q4	10,887	10,590	10,152	4,541	4,534	3,833
2011 Q1	13,982	12,795	11,516	5,642	5,278	4,197
Q2	14,761	13,911	12,510	6,217	5,871	4,647
Q3	14,208	14,076	12,352	6,217	5,931	4,862
Q4	11,632	12,120	10,810	4,864	5,021	4,486
2012 Q1	13,323	12,642	11,493	5,374	5,426	4,456
Q2	13,268	13,235	11,595	5,535	5,824	4,209
Q3	12,584	13,795	10,471	5,360	5,773	3,773
Q4	12,519	12,349	10,700	5,281	5,300	3,808
2013 Q1	12,125	12,713	10,165	5,212	5,430	3,643
Q2	14,960	16,188	4,401	6,351	6,655	2,190
2011 September	4,990	4,826	12,352	2,056	2,009	4,862
October	4,515	4,582	..	1,863	1,904	..
November	4,244	4,375	..	1,776	1,795	..
December	2,873	3,163	10,810	1,225	1,322	4,486
2012 January	4,229	3,870	..	1,707	1,639	..
February	4,339	3,719	..	1,843	1,653	..
March	4,754	5,053	11,493	1,824	2,133	4,456
April	4,167	4,281	..	1,746	1,874	..
May	4,842	4,756	..	2,014	2,154	..
June	4,258	4,199	11,595	1,775	1,797	4,209
July	4,313	4,285	..	1,828	1,939	..
August	3,927	4,931	..	1,751	1,970	..
September	4,344	4,579	10,471	1,782	1,863	3,773
October	4,642	4,867	..	1,945	2,074	..
November	4,726	4,582	..	2,022	1,943	..
December	3,151	2,900	10,700	1,314	1,283	3,808
2013 January	3,751	3,432	..	1,696	1,500	..
February	3,793	4,431	..	1,506	1,885	..
March	4,580	4,850	10,165	2,010	2,045	3,643
April	4,966	5,451	..	2,250	2,375	..
May	5,303	5,695	..	2,305	2,329	..
June	4,691	5,042	4,401	1,796	1,952	2,190
July (P)	5,070	5,490	..	2,122	2,243	..
August (P)	4,233	4,535	..	1,751	1,922	..
September (P)	4,960	4,822	..	2,071	1,955	..

* Refers to stocks at end of period

Missing returns for provisional data (P) have been estimated using an improved methodology. See the 'pre-announcement of any major changes to samples or methodology' on our website

CONCRETE PRODUCTS

Thousand square metres

Lightweight			Aerated			
Production	Deliveries (from)	Stocks*	Production	Deliveries (from)	Stocks*	
23,478	23,537	2,188	32,252	31,786	2,863	2002
24,991	25,161	2,107	33,909	34,047	2,721	2003
25,462	25,736	2,271	33,117	31,674	4,127	2004
25,561	25,673	2,173	28,248	27,405	4,042	2005
25,345	25,222	..	27,209	27,051	..	2006
25,965	25,667	..	27,300	27,682	..	2007
18,168	18,363	2,149	19,900	18,884	3,273	2008
13,421	13,989	1,522	14,367	13,903	3,507	2009
14,415	13,923	2,044	16,822	16,104	4,276	2010
15,153	14,821	1,728	16,490	15,978	4,596	2011
14,383	14,103	2,024	15,759	15,595	4,868	2012
5,421	5,405	2,549	6,043	5,632	4,321	2008 Q2
4,110	4,309	2,338	3,653	4,424	3,406	Q3
3,057	3,260	2,149	3,216	3,216	3,273	Q4
3,213	3,258	2,181	3,247	2,953	3,352	2009 Q1
3,498	3,553	2,125	3,773	3,607	3,510	Q2
3,293	3,765	1,544	3,667	3,903	3,269	Q3
3,416	3,412	1,522	3,681	3,439	3,507	Q4
3,344	3,252	1,601	4,238	3,924	3,806	2010 Q1
4,031	3,950	1,692	4,582	4,627	3,785	Q2
4,208	3,899	2,023	4,487	4,319	3,971	Q3
2,832	2,822	2,044	3,515	3,234	4,276	Q4
3,916	3,665	2,301	4,423	3,852	5,017	2011 Q1
4,008	3,827	2,507	4,537	4,212	5,357	Q2
3,908	3,970	2,218	4,083	4,175	5,272	Q3
3,321	3,359	1,728	3,447	3,739	4,596	Q4
3,559	3,314	1,964	4,389	3,903	5,074	2012 Q1
3,487	3,437	2,006	4,245	3,973	5,380	Q2
3,756	3,887	1,904	3,467	4,135	4,794	Q3
3,580	3,465	2,024	3,658	3,584	4,868	Q4
3,094	3,389	1,730	3,818	3,893	4,793	2013 Q1
4,691	4,809	1,303	3,918	4,723	908	Q2
1,267	1,352	2,218	1,666	1,466	5,272	2011 September
1,166	1,265	..	1,487	1,414	..	October
1,386	1,271	..	1,082	1,308	..	November
769	823	1,728	878	1,017	4,596	December
1,165	990	..	1,357	1,241	..	2012 January
1,112	998	..	1,384	1,068	..	February
1,281	1,326	1,964	1,648	1,594	5,074	March
1,106	1,100	..	1,315	1,307	..	April
1,303	1,230	..	1,525	1,371	..	May
1,078	1,107	2,006	1,405	1,295	5,380	June
1,206	1,155	..	1,280	1,191	..	July
1,337	1,430	..	839	1,530	..	August
1,213	1,302	1,904	1,348	1,414	4,794	September
1,393	1,453	..	1,304	1,340	..	October
1,333	1,308	..	1,371	1,330	..	November
854	704	2,024	983	914	4,868	December
930	927	..	1,125	1,006	..	2013 January
1,048	1,211	..	1,239	1,334	..	February
1,116	1,252	1,730	1,454	1,553	4,793	March
1,436	1,518	..	1,280	1,558	..	April
1,805	1,771	..	1,192	1,594	..	May
1,449	1,520	1,303	1,446	1,571	908	June
1,609	1,680	..	1,340	1,566	..	July (P)
1,386	1,361	..	1,095	1,251	..	August (P)
1,415	1,413	..	1,474	1,454	..	September (P)

Data from December 2011 to June 2012 has been revised following receipt of corrected data. The period August 2007 to November 2011 may also be affected, but non-availability of a back-series of corrected data means that this period cannot be revised, and should be treated with caution. Full details are available in the 'Summary of revision to monthly statistics of building materials and components publication' document on our website

CONCRETE PRODUCTS

Table 12 : Concrete Blocks : Production, Deliveries and Stocks by English Region, Wales and Scotland

	North East	Yorks & Humber	North West	West Midlands	East Midlands	East of England
(a) Dense aggregate						
Production						
2012	2,207
2012 Q2	84	..	592
Q3	73	..	547
Q4	520
2013 Q1	..	414	447
Q2	606
Deliveries (from)						
2012	271	..	2,148
2012 Q2	74	..	607
Q3	66	..	596
Q4	61	..	438
2013 Q1	..	402	521
Q2	661
Stocks *						
2012	..	231	295
2012 Q2	75	369	275	..	800	..
Q3	83	246	213
Q4	..	231	295
2013 Q1	..	244	221
Q2	..	138	166	..	106	..
(b) Other (1)						
Production						
2012	1,899
2012 Q2	286	..	511
Q3	289	..	498
Q4	449
2013 Q1	..	1,874	387
Q2	579
Deliveries (from)						
2012	1,114	..	1,892
2012 Q2	288	..	505
Q3	311	..	510
Q4	254	..	432
2013 Q1	..	1,960	444
Q2	572
Stocks *						
2012	..	1,434	174
2012 Q2	117	1,559	164	..	538	..
Q3	92	1,376	157
Q4	..	1,434	174
2013 Q1	..	1,347	116
Q2	..	879	123	..	312	..
(c) Total						
Production						
2012	1,377	9,437	4,105	4,113	6,418	4,918
2012 Q2	370	2,381	1,104	1,030	1,655	1,458
Q3	362	2,335	1,045	1,042	1,497	1,001
Q4	324	2,505	969	921	1,553	875
2013 Q1	263	2,288	834	1,122	1,518	905
Q2	385	2,737	1,185	1,203	1,796	1,385
Deliveries (from)						
2012	1,385	9,475	4,040	4,046	6,106	5,002
2012 Q2	362	2,146	1,112	970	1,472	1,565
Q3	377	2,577	1,106	1,208	1,620	1,200
Q4	314	2,461	870	1,076	1,495	888
2013 Q1	281	2,362	965	1,073	1,577	1,023
Q2	409	2,962	1,233	1,395	1,967	1,505
Stocks *						
2012	184	1,665	469	468	1,218	481
2012 Q2	191	1,928	439	779	1,338	580
Q3	174	1,621	370	624	1,160	494
Q4	184	1,665	469	468	1,218	481
2013 Q1	165	1,591	337	517	1,159	362
Q2	142	1,017	289	325	418	346

Note : Regions refer to Government Office Regions

* Refers to stocks at end of period.

CONCRETE PRODUCTS

Thousand square metres

South East	South West	England	Wales	Scotland	Great Britain	
						(a) Dense aggregate
						Production
..	5,629	..	3,527	..	21,551	2012
..	1,357	..	825	..	5,535	2012 Q2
..	1,370	3,920	882	558	5,360	Q3
..	1,445	3,799	1,020	463	5,281	Q4
432	1,408	3,777	974	461	5,212	2013 Q1
..	1,811	..	899	..	6,351	Q2
						Deliveries (from)
..	5,779	16,219	4,019	2,084	22,323	2012
..	1,409	4,160	1,132	533	5,824	2012 Q2
..	1,441	4,240	900	634	5,773	Q3
..	1,442	3,752	1,011	536	5,300	Q4
391	1,541	3,946	1,004	480	5,430	2013 Q1
..	..	5,173	927	555	6,655	Q2
						Stocks *
121	..	3,113	390	305	3,808	2012
..	1,428	3,477	398	334	4,209	2012 Q2
..	1,362	3,024	382	367	3,773	Q3
121	..	3,113	390	305	3,808	Q4
161	1,274	2,943	359	341	3,643	2013 Q1
..	698	1,602	213	375	2,190	Q2
						(b) Other (1)
						Production
..	1,068	..	445	..	30,142	2012
..	282	..	102	..	7,732	2012 Q2
..	269	7,071	117	35	7,224	Q3
..	201	7,090	115	34	7,238	Q4
1,658	153	6,804	74	34	6,912	2013 Q1
..	219	..	516	..	8,609	Q2
						Deliveries (from)
..	1,003	29,183	415	100	29,698	2012
..	264	7,291	106	14	7,411	2012 Q2
..	241	7,874	116	31	8,022	Q3
..	200	6,910	99	40	7,049	Q4
1,679	210	7,157	92	34	7,283	2013 Q1
..	..	8,964	532	37	9,533	Q2
						Stocks *
3,608	..	6,766	88	38	6,892	2012
..	232	7,284	71	31	7,386	2012 Q2
..	253	6,582	72	45	6,698	Q3
3,608	..	6,766	88	38	6,892	Q4
3,587	199	6,411	70	41	6,522	2013 Q1
..	83	2,139	49	24	2,211	Q2
						(c) Total
						Production
8,595	6,697	45,660	3,973	2,061	51,693	2012
2,155	1,639	11,791	928	549	13,268	2012 Q2
2,071	1,640	10,992	999	593	12,584	Q3
2,096	1,646	10,888	1,135	496	12,519	Q4
2,090	1,561	10,581	1,048	495	12,125	2013 Q1
2,219	2,030	12,942	1,415	603	14,960	Q2
						Deliveries (from)
8,567	6,782	45,403	4,434	2,184	52,021	2012
2,151	1,673	11,451	1,238	546	13,235	2012 Q2
2,345	1,682	12,114	1,016	665	13,795	Q3
1,916	1,642	10,662	1,110	577	12,349	Q4
2,070	1,751	11,103	1,095	514	12,713	2013 Q1
2,463	2,201	14,137	1,460	592	16,188	Q2
						Stocks *
3,728	1,666	9,879	478	343	10,700	2012
3,846	1,660	10,761	469	365	11,595	2012 Q2
3,548	1,615	9,606	454	412	10,471	Q3
3,728	1,666	9,879	478	343	10,700	Q4
3,748	1,473	9,354	430	382	10,165	2013 Q1
425	780	3,740	262	399	4,401	Q2

(1) Lightweight aggregate including aerated concrete blocks where appropriate.

Data from December 2011 to June 2012 has been revised following receipt of corrected data. The period August 2007 to November 2011 may also be affected, but non-availability of a back-series of corrected data means that this period cannot be revised, and should be treated with caution. Full details are available in the 'Summary of revision to monthly statistics of building materials and components publication' document on our website.

OTHER BUILDING MATERIALS

Table 13 : Other Building Materials

		Great Britain			United Kingdom
		Concrete Roofing Tiles (Th.sq.m. of roof area covered)			Ready-Mixed Concrete # (Th.cu.m.)
		Production	Deliveries	Stocks *	Deliveries
2002		25,023	24,390	4,586	22,597
2003		21,437	21,401	2,982	22,289
2004		20,739	19,403	2,850	22,856
2005		25,719	24,489	4,902	22,432
2006		23,730	24,118	4,426	23,029
2007		23,551	23,812	3,646	23,548
2008		20,084	19,926	3,899	20,051
2009		14,079	15,612	2,344	14,069
2010		17,817	17,146	3,023	14,038
2011		17,712	17,684	3,126	15,121
2012		17,224	17,159	3,191	13,758
2004	Q3	4,920	5,134	3,048	6,038
	Q4	5,055	5,175	2,850	5,553
2005	Q1	5,787	4,779	3,732	5,137
	Q2	7,502	6,406	5,818	5,994
	Q3	6,135	7,103	4,850	5,920
	Q4	6,295	6,200	4,902	5,381
2006	Q1	6,792	6,252	5,418	5,445
	Q2	6,002	5,709	5,708	5,995
	Q3	5,448	6,371	4,688	6,047
	Q4	5,489	5,787	4,426	5,542
2007	Q1	6,618	5,629	5,368	5,554
	Q2	5,775	5,728	5,360	6,103
	Q3	5,129	6,541	3,929	6,205
	Q4	6,028	5,914	3,646	5,686
2008	Q1	5,708	5,421	3,922	5,193
	Q2	5,815	5,679	4,488	5,773
	Q3	4,657	4,977	3,840	4,902
	Q4	3,903	3,849	3,899	4,183
2009	Q1	3,664	3,281	4,273	3,583
	Q2	3,055	3,936	3,391	3,637
	Q3	3,580	4,447	2,522	3,628
	Q4	3,779	3,949	2,344	3,221
2010	Q1	4,129	3,505	2,967	3,328
	Q2	4,961	4,922	3,008	3,819
	Q3	4,783	4,824	2,967	3,831
	Q4	3,945	3,894	3,023	3,060
2011	Q1	4,820	4,079	3,858	3,827
	Q2	4,565	4,398	4,022	3,907
	Q3	4,210	4,901	3,316	3,908
	Q4	4,116	4,306	3,126	3,479
2012	Q1	4,673	3,928	3,872	3,463
	Q2	4,236	4,100	4,008	3,399
	Q3	3,971	4,885	3,093	3,556
	Q4	4,344	4,246	3,191	3,340
2013	Q1	4,319	3,876	3,634	3,325
	Q2	4,112	4,533	3,212	4,108
	Q3	Updates have been temporarily suspended ¹			3,972

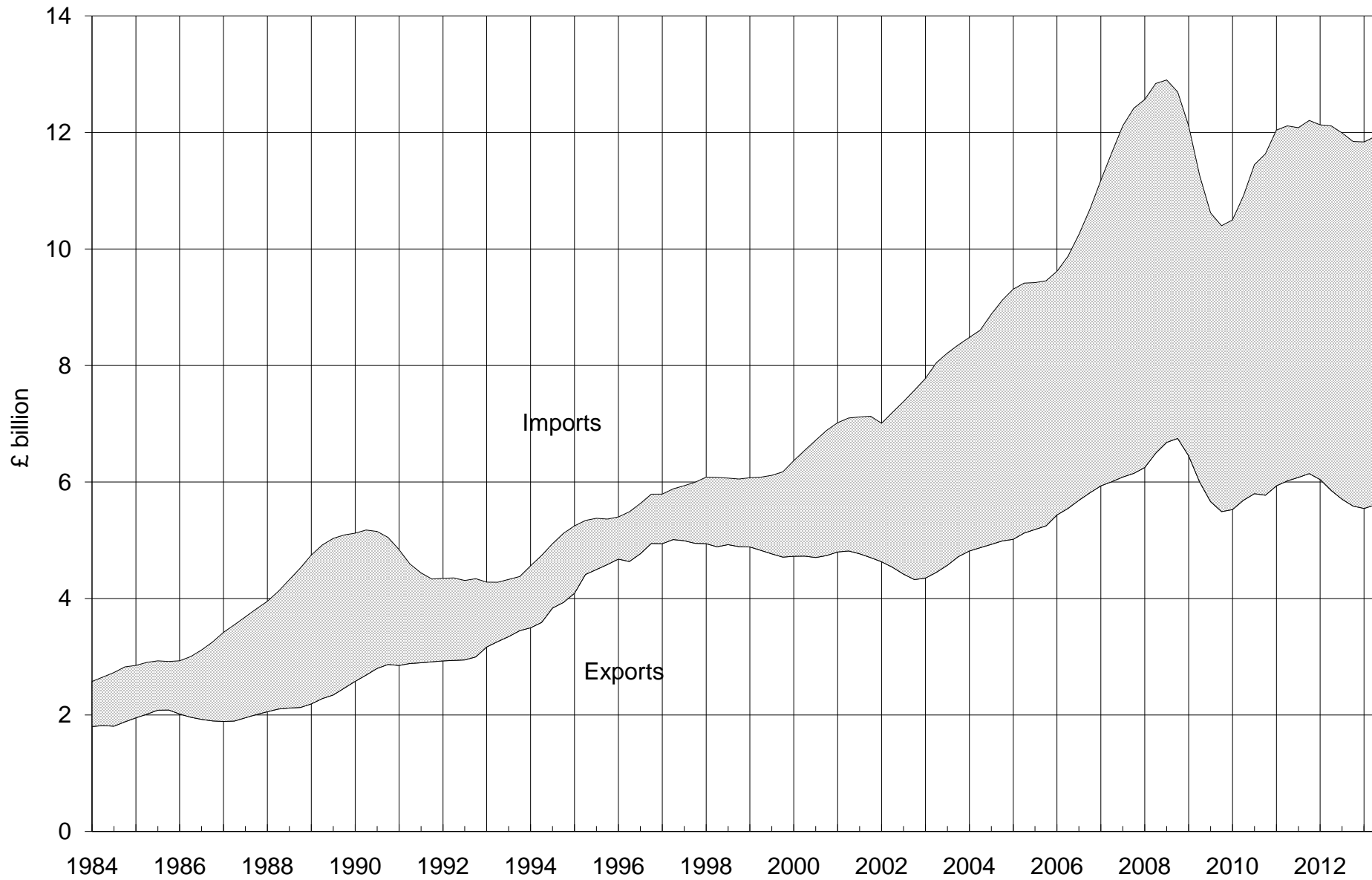
* Refers to stocks at the end of the period.

In April 2012, the Mineral Products Association (who provide these figures), estimated that data understates UK deliveries by around 20-25%. Previously, they had estimated that figures understate UK deliveries by 14-18%.

Concrete roofing tiles data underwent imputation for a non-responder/s in each quarter from 2012Q1 to 2013Q2.

Comparison of Imports & Exports

4-quarter moving totals



The data is taken from Table 14

EXTERNAL TRADE

**Table 14 : Value of Overseas Trade in Selected Materials and Components
for Constructional Use : Imports (cif) & Exports (fob)**

United Kingdom		Current Prices (£'000)					
		2007	2008	2009	2010	2011	2012
All Building Materials & Components	Imports	12,415,890	12,697,046	10,399,489	11,632,361	12,206,507	11,844,901
	Exports	6,147,721	6,747,415	5,491,055	5,772,232	6,143,891	5,585,912
	Balance	(6,268,169)	(5,949,631)	(4,908,434)	(5,860,129)	(6,062,616)	(6,258,989)
All Raw Materials	Imports	213,589	228,019	158,706	174,275	200,736	172,288
	Exports	124,957	116,930	135,125	132,349	140,525	78,895
	Balance	(88,632)	(111,089)	(23,581)	(41,926)	(60,211)	(93,393)
Sand for construction	Imports	6,455	6,369	5,916	5,259	7,558	8,514
	Exports	7,769	9,373	7,967	7,398	7,783	6,150
Crushed Rock : uncoated	Imports	38,882	43,442	32,030	36,490	41,280	30,691
	Exports	71,990	77,930	76,898	73,902	78,237	62,209
Crushed Rock : coated	Imports	2,927	3,206	2,227	2,642	3,057	4,376
	Exports	3,937	3,862	3,061	2,988	4,727	4,200
Building Stone : unprocessed	Imports	115,064	124,436	93,174	99,236	107,354	110,981
	Exports	3,209	2,159	2,114	4,053	3,716	1,881
Slate : unprocessed	Imports	11,590	9,295	6,168	5,799	4,686	5,165
	Exports	1,579	813	1,924	844	922	886
Gypsum & Anhydrite	Imports	8,626	8,301	8,353	7,040	7,284	8,119
	Exports	493	899	768	1,148	1,035	1,141
Bituminous Shale	Imports	30,045	32,970	10,838	17,809	29,517	4,442
	Exports	35,980	21,894	42,393	42,016	44,105	2,428
All Semi-Manufactures	Imports	2,196,078	1,972,139	1,389,572	1,639,598	1,698,664	1,649,529
	Exports	644,415	648,822	426,190	480,686	486,111	440,825
	Balance	(1,551,663)	(1,323,317)	(963,382)	(1,158,912)	(1,212,553)	(1,208,704)
Clinker	Imports	60,554	35,973	18,520	17,331	19,940	25,772
	Exports	1,899	1,271	835	1,205	2,763	1,989
Sawn Wood > 6mm thick	Imports	915,900	610,292	554,187	705,638	622,813	626,106
	Exports	32,010	20,957	16,025	19,437	14,671	12,043
Densified Wood	Imports	2,332	1,767	1,452	2,301	1,942	2,179
	Exports	319	272	268	518	569	509
Particle Board	Imports	55,934	45,497	27,913	30,755	34,479	27,318
	Exports	9,377	8,920	8,382	8,875	8,044	9,363
Laminated Wood	Imports	282,912	296,969	215,021	146,691	133,222	120,624
	Exports	23,172	21,935	15,839	11,698	11,051	7,100
Fibreboard	Imports	72,499	61,614	56,511	53,901	60,031	59,438
	Exports	10,575	8,966	15,055	24,727	11,162	12,143
Steel for Fabrication	Imports	463,477	529,327	184,164	286,866	354,980	339,984
	Exports	257,126	301,366	185,537	216,815	206,955	175,148
Aluminium for Fabrication	Imports	277,251	315,948	268,155	325,157	408,816	391,805
	Exports	234,348	216,596	123,494	131,665	160,722	153,622
Profiles of Vinyl Chloride	Imports	41,560	44,169	44,827	35,911	25,099	27,139
	Exports	33,766	25,781	23,770	23,337	24,027	23,339
Slag for Construction	Imports	8,607	11,580	2,331	5,825	1,906	2,074
	Exports	1,231	1,018	921	1,112	1,280	1,014
Tar & Bituminous Mixtures	Imports	12,285	17,424	15,156	27,742	33,081	25,013
	Exports	27,895	27,680	22,781	27,613	26,921	25,861
Lime	Imports	2,767	1,579	1,335	1,480	2,355	2,077
	Exports	12,697	14,060	13,283	13,684	17,946	18,694

EXTERNAL TRADE

Current Prices (£'000)

2012 Q2	Q3	Q4	2013 Q1	Q2		
3,057,038 (R)	2,988,455 (R)	2,822,171 (R)	2,969,978 (R)	3,149,764	Imports	All Building Materials & Components
1,413,785 (R)	1,411,217 (R)	1,358,212 (R)	1,362,085 (R)	1,474,146	Exports	
(1,643,253) (R)	(1,577,238) (R)	(1,463,959) (R)	(1,607,893) (R)	(1,675,618)	Balance	
49,160	44,084	34,518	37,462 (R)	46,749	Imports	All Raw Materials
21,416 (R)	21,782 (R)	19,757 (R)	15,253 (R)	23,417	Exports	
(27,744) (R)	(22,302) (R)	(14,761) (R)	(22,209) (R)	(23,332)	Balance	
1,633	2,603	2,152	2,155 (R)	2,310	Imports	Sand for construction
1,490 (R)	1,707 (R)	1,392 (R)	1,262 (R)	1,740	Exports	
10,242	7,624	5,935	5,825 (R)	7,205	Imports	Crushed Rock : uncoated
16,935	17,601	15,453	11,553 (R)	17,740	Exports	
941	1,612	1,157	347	431	Imports	Crushed Rock : coated
1,311	968	1,387	999	1,623	Exports	
32,803	28,240	21,128	25,426	32,139	Imports	Building Stone : unprocessed
523	438	530	355	518	Exports	
1,286	1,551	1,368	1,437	1,587	Imports	Slate : unprocessed
256	156	131	416	308	Exports	
2,037	1,626	2,500	1,940	2,249	Imports	Gypsum & Anhydrite
227	374	197	492	306	Exports	
218	828	278	332	828	Imports	Bituminous Shale
674	538	667	176	1,182	Exports	
464,965 (R)	394,238 (R)	362,918 (R)	418,230 (R)	464,238	Imports	All Semi-Manufactures
111,827 (R)	113,660 (R)	102,397 (R)	116,567 (R)	116,741	Exports	
(353,138) (R)	(280,578) (R)	(260,521) (R)	(301,663) (R)	(347,497)	Balance	
5,255	7,389	6,203	6,772	7,298	Imports	Clinker
383	553	149	41	118	Exports	
180,230 (R)	149,354 (R)	133,049 (R)	147,122 (R)	180,424	Imports	Sawn Wood > 6mm thick
3,443 (R)	3,099	2,669	2,933 (R)	4,008	Exports	
547 (R)	422	440	574	474	Imports	Densified Wood
101	153	106	151	216	Exports	
6,366 (R)	7,063	6,887	8,243 (R)	9,197	Imports	Particle Board
2,426	1,888 (R)	1,818 (R)	1,395	1,315	Exports	
37,368 (R)	28,388	26,794 (R)	31,432 (R)	36,139	Imports	Laminated Wood
2,293	1,465	1,370	1,423	1,642	Exports	
14,712 (R)	15,137	14,501	15,363 (R)	14,300	Imports	Fibreboard
3,353 (R)	2,615 (R)	2,722 (R)	2,734 (R)	2,634	Exports	
103,099	77,051	71,386	91,276 (R)	92,362	Imports	Steel for Fabrication
41,537 (R)	45,263 (R)	39,202 (R)	50,442 (R)	45,954	Exports	
102,526 (R)	94,623 (R)	90,364 (R)	104,200 (R)	108,248	Imports	Aluminium for Fabrication
40,618 (R)	40,051	37,635 (R)	43,044 (R)	42,661	Exports	
6,691 (R)	6,374	6,093	5,546 (R)	6,908	Imports	Profiles of Vinyl Chloride
5,241 (R)	6,169	6,138	5,247 (R)	6,770	Exports	
586	862	238	491	963	Imports	Slag for Construction
352	155	276	260	614	Exports	
7,005	7,188	6,222	6,861 (R)	7,457	Imports	Tar & Bituminous Mixtures
7,948	7,066	6,106	3,685 (R)	6,584	Exports	
580	387	741	350 (R)	468	Imports	Lime
4,132	5,183	4,206	5,212	4,225	Exports	

EXTERNAL TRADE

Table 14 : Value of Overseas Trade in Selected Materials and Components for Constructional Use : Imports (cif) & Exports (fob)

United Kingdom		Current Prices (£'000)					
		2007	2008	2009	2010	2011	2012
All Products & Components	Imports	10,006,223	10,496,888	8,851,211	9,818,488	10,307,107	10,023,084
	Exports	5,378,349	5,981,663	4,929,740	5,159,197	5,517,255	5,066,192
	Balance	(4,627,874)	(4,515,225)	(3,921,471)	(4,659,291)	(4,789,852)	(4,956,892)
Wood sleepers (rail & tram)	Imports	7,907	10,736	5,761	5,065	7,634	12,186
	Exports	905	1,074	688	717	893	2,849
Building Stone : processed	Imports	243,019	252,176	211,999	217,570	177,755	177,141
	Exports	34,465	38,557	37,466	30,751	10,603	10,047
Slate Roofing Tiles*	Imports	58,165	65,872	57,067	63,188
	Exports	6,941	6,559	8,552	6,286
Other Slate Products*	Imports	8,963	8,204	8,002	8,381
	Exports	2,348	1,643	1,141	1,725
Slate Products*	Imports	72,289	71,054
	Exports	7,413	6,481
Portland Cement	Imports	59,422	65,930	54,475	52,246	48,735	44,297
	Exports	26,525	13,271	4,897	4,178	5,481	5,251
Other Cements	Imports	24,705	31,452	47,618	50,669	61,532	43,621
	Exports	31,336	29,824	24,202	35,097	37,960	40,394
Steel Sheet Piling	Imports	71,747	78,763	48,577	61,527	51,576	64,412
	Exports	20,205	32,009	24,175	16,226	18,568	14,396
Ready-Mixed Concrete	Imports	686	826	711	822	36	34
	Exports	10,378	12,639	4,600	3,378	3,036	3,117
Concrete Reinforcing Bars	Imports	181,795	210,556	72,138	86,842	135,802	153,766
	Exports	107,236	194,136	68,087	60,252	46,970	55,782
Mortars	Imports	6,225	7,021	7,949	7,357	8,852	10,212
	Exports	5,772	6,410	5,360	3,757	8,936	4,776
Clay Bricks	Imports	35,245	25,877	18,675	19,778	22,918	24,048
	Exports	10,591	7,133	3,703	3,162	2,842	4,109
Clay Roofing Tiles	Imports	10,348	10,104	7,576	9,116	8,889	12,165
	Exports	303	276	511	589	207	192
Clay Pipes	Imports	669	313	146	225	258	614
	Exports	5,518	5,775	4,177	3,472	4,124	3,532
Other Clay Products	Imports	5,602	6,668	5,453	5,225	6,068	5,351
	Exports	17,502	18,852	2,851	3,188	3,566	2,702
Concrete Blocks & Bricks	Imports	11,475	8,615	4,421	4,369	7,466	8,461
	Exports	27,318	21,102	11,844	9,203	9,421	7,880
Concrete Roofing Tiles*	Imports	4,664	7,195	7,342	5,017
	Exports	7,013	3,844	2,402	2,949
Other Concrete Tiles & Paving*	Imports	16,130	18,353	15,576	13,297
	Exports	38,280	34,756	19,151	13,594
Concrete Tiles and Pavings*	Imports	19,565	18,118
	Exports	13,478	11,854
Prefabricated Concrete Products	Imports	26,763	34,841	23,582	28,811	20,514	23,137
	Exports	23,240	19,042	8,967	12,390	4,432	4,078
Concrete Pipes	Imports	32,767	36,740	40,646	45,485	61,426	51,663
	Exports	32,536	31,413	30,366	24,339	26,578	25,227

Current Prices (£'000)

2012 Q2	Q3	Q4	2013 Q1	Q2		
2,542,913 (R)	2,550,133 (R)	2,424,735 (R)	2,514,286 (R)	2,638,777	Imports	All Products & Components
1,280,542 (R)	1,275,775 (R)	1,236,058 (R)	1,230,265 (R)	1,333,988	Exports	
(1,262,371) (R)	(1,274,358) (R)	(1,188,677) (R)	(1,284,021) (R)	(1,304,789)	Balance	
3,310	3,391	3,327	2,432	3,299	Imports	Wood sleepers (rail & tram)
1,776	498	28	13	69	Exports	
44,986	45,655	42,645	45,081 (R)	44,582	Imports	Building Stone : processed
2,616 (R)	2,905	2,572	2,325 (R)	3,018	Exports	
..	Imports	Slate Roofing Tiles*
..	Exports	
..	Imports	Other Slate Products*
..	Exports	
18,563	18,392	17,900	15,891 (R)	17,293	Imports	Slate Products*
1,487	1,375	2,396	1,797	2,390	Exports	
10,255	11,768	9,341	11,518 (R)	12,953	Imports	Portland Cement
1,208	1,099	1,473	879	1,275	Exports	
11,478 (R)	11,068 (R)	9,736 (R)	10,466 (R)	13,465	Imports	Other Cements
11,435	10,006	9,518	10,852 (R)	9,573	Exports	
15,248 (R)	12,820 (R)	15,148 (R)	16,010 (R)	11,941	Imports	Steel Sheet Piling
3,508 (R)	3,241	4,269	4,298 (R)	6,103	Exports	
1	0	10	9	103	Imports	Ready-Mixed Concrete
740	905	680	527 (R)	600	Exports	
49,530	29,093	28,215	38,402 (R)	41,654	Imports	Concrete Reinforcing Bars
12,592 (R)	21,413 (R)	12,823 (R)	12,722 (R)	14,947	Exports	
2,358	2,733	2,557	3,055 (R)	4,569	Imports	Mortars
1,176	835	1,779	2,347	1,478	Exports	
6,264	6,475	4,806	7,844 (R)	8,482	Imports	Clay Bricks
1,129	1,252	939	565	903	Exports	
3,791	2,457	2,975	2,185 (R)	2,619	Imports	Clay Roofing Tiles
42	37	76	27	16	Exports	
493	61	29	347	291	Imports	Clay Pipes
921	905	1,001	997	1,015	Exports	
1,240	1,418	1,306	1,263	1,209	Imports	Other Clay Products
697	669	480	414	442	Exports	
1,979	2,315	2,087	2,083 (R)	2,485	Imports	Concrete Blocks & Bricks
2,166 (R)	1,931	1,307	1,291 (R)	2,299	Exports	
..	Imports	Concrete Roofing Tiles*
..	Exports	
..	Imports	Other Concrete Tiles & Paving*
..	Exports	
5,148	5,014	3,724	3,491	4,364	Imports	Concrete Tiles and Pavings*
3,667	3,464	2,220	2,106	3,512	Exports	
4,013	5,840	7,815	7,626 (R)	9,392	Imports	Prefabricated Concrete Products
798	1,004	1,153	781 (R)	775	Exports	
13,043	13,308	11,681 (R)	15,226 (R)	11,888	Imports	Concrete Pipes
6,098	5,917	6,703	5,029 (R)	9,736	Exports	

* Due to changes to in European Commission product classifications Slate Roofing Tiles and Other Slate Products have been combined. Similarly, Concrete Roofing Tiles and Other Concrete Tiles and Pavings have been combined.

EXTERNAL TRADE

Table 14 : Value of Overseas Trade in Selected Materials and Components for Constructional Use : Imports (cif) & Exports (fob)

United Kingdom		Current Prices (£'000)					
		2007	2008	2009	2010	2011	2012
Products & Components (continued)							
Structural Units (steel)	Imports	526,140	564,645	470,772	604,136	648,018	329,443
	Exports	498,331	604,520	505,127	486,891	472,789	165,219
Structural Units (aluminium)	Imports	220,258	251,909	292,334	178,196	235,864	245,771
	Exports	81,777	98,289	71,158	54,971	61,224	61,176
Steel Tubes & Hollow Sections	Imports	142,420	157,616	108,794	130,955	154,120	161,987
	Exports	114,756	132,537	82,990	108,503	128,588	107,576
Bituminous Roofing Felt*	Imports	25,627	30,853	35,139	39,835
	Exports	5,406	3,507	3,392	2,744
Other Asphalt products*	Imports	9,966	9,999	9,987	10,750
	Exports	16,768	18,030	19,595	14,474
Asphalt Products*	Imports	54,421	57,425
	Exports	18,070	15,163
Mineral Insulating Materials	Imports	81,851	78,961	74,096	81,060	83,477	87,113
	Exports	139,360	132,697	106,865	146,430	164,857	166,592
Glass Fibre**	Imports	1,482	1,185	552	381	602	..
	Exports	1,188	2,829	1,220	1,075	2,669	..
Fibre Cement Products	Imports	31,344	28,053	28,663	31,019	35,084	37,205
	Exports	6,668	7,680	4,847	5,849	9,199	9,134
Building Plasters ¹	Imports	6,172	6,868	8,845
	Exports	7,622	8,077	7,475
Plasters ¹	Imports	13,820	11,656	11,629
	Exports	7,905	9,168	9,201
Plasterboard	Imports	30,302	16,057	13,683	15,007	18,972	15,534
	Exports	19,798	18,397	16,505	12,912	12,522	12,649
Copper Pipes	Imports	217,861	245,212	182,487	241,116	228,049	208,675
	Exports	153,412	171,581	116,520	146,447	142,770	118,294
Lead Pipes & Fittings**	Imports	93	18	509	148
	Exports	48	626	209	243
Zinc Pipes & Fittings*	Imports	1,154	918	494	757
	Exports	7,166	6,016	4,388	914
Other Zinc Building Products*	Imports	12,447	13,117	10,409	13,000
	Exports	20,946	22,026	22,639	26,529
Zinc Building Products*	Imports	12,933	14,449
	Exports	12,933	35,406
Plastic Pipes	Imports	114,727	133,929	117,126	105,667	114,260	108,156
	Exports	205,332	211,718	202,745	149,389	156,648	163,915
Other Plastic Building Products	Imports	148,828	149,235	138,250	148,270	157,129	153,056
	Exports	115,008	117,407	96,902	110,278	129,742	104,823
Builders Ironmongery	Imports	498,373	505,665	278,144	312,316	314,993	337,893
	Exports	157,424	165,476	94,402	112,191	128,039	122,964
Nails & Screws	Imports	59,853	61,080	48,123	66,865	64,896	61,113
	Exports	12,553	12,851	8,281	8,949	11,186	7,495
Mastics, Putty	Imports	148,599	151,898	132,061	143,430	151,902	164,617
	Exports	103,998	119,256	110,080	115,349	139,748	128,071
Paints & Varnishes	Imports	339,581	356,451	345,977	376,374	403,309	420,208
	Exports	442,126	551,564	503,518	552,294	622,468	630,022

¹ From Q1 2010 onwards the Plasters category will contain Building Plaster and Other Plasters as Building Plasters data is no longer collected

EXTERNAL TRADE

Current Prices (£'000)

2012 Q2	Q3	Q4	2013 Q1	Q2	Products & Components (continued)	
76,951 (R)	114,596 (R)	79,661	64,266 (R)	78,176	Imports	Structural Units (steel)
41,106	43,295	39,903	40,728 (R)	42,357	Exports	
64,163 (R)	53,747 (R)	66,641 (R)	59,857 (R)	66,175	Imports	Structural Units (aluminium)
13,321	17,644 (R)	17,122 (R)	19,793 (R)	16,544	Exports	
44,656 (R)	39,973 (R)	32,809	31,125 (R)	31,648	Imports	Steel Tubes & Hollow Sections
30,662 (R)	23,334	21,959	24,287	27,256	Exports	
..	Imports	Bituminous Roofing Felt*
..	Exports	
..	Imports	Other Asphalt products*
..	Exports	
13,256 (R)	15,692	14,061	16,301 (R)	14,071	Imports	Asphalt Products*
3,159	3,814	2,946	3,268	2,885	Exports	
21,910 (R)	23,084 (R)	22,072 (R)	19,442 (R)	20,064	Imports	Mineral Insulating Materials
43,225	41,819	37,590	38,952 (R)	39,410	Exports	
..	Imports	Glass Fibre**
..	Exports	
8,262	10,424	9,277	9,307	10,286	Imports	Fibre Cement Products
2,338	2,311	2,275	1,814	2,302	Exports	
..	Imports	Building Plasters1
..	Exports	
3,261	2,869	2,312	2,151	2,192	Imports	Plasters1
2,305	2,259	2,321	2,029	1,834	Exports	
3,883	3,672	2,758	3,717	3,511	Imports	Plasterboard
3,132	3,378	2,919	2,749	2,586	Exports	
54,259	52,566	43,669	55,044 (R)	54,337	Imports	Copper Pipes
31,084	27,592	28,764	31,359 (R)	33,516	Exports	
..	Imports	Lead Pipes & Fittings**
..	Exports	
..	Imports	Zinc Pipes & Fittings*
..	Exports	
..	Imports	Other Zinc Building Products*
..	Exports	
3,336	4,924 (R)	2,722	3,187 (R)	3,552	Imports	Zinc Building Products*
8,157	13,203	6,531	6,730 (R)	6,246	Exports	
29,028	27,805	24,048	29,525 (R)	30,239	Imports	Plastic Pipes
48,759	45,125	32,428	35,852 (R)	42,997	Exports	
37,883 (R)	38,788 (R)	35,986 (R)	39,279 (R)	43,153	Imports	Other Plastic Building Products
25,844 (R)	25,670	25,027	25,951 (R)	26,897	Exports	
90,566 (R)	87,841 (R)	75,149 (R)	78,707 (R)	85,558	Imports	Builders Ironmongery
31,259 (R)	30,919 (R)	29,230 (R)	30,152 (R)	39,448	Exports	
14,456	14,927	14,336	15,818	18,572	Imports	Nails & Screws
1,795	1,788	1,756	2,145 (R)	2,198	Exports	
40,796	43,445	39,861	38,992 (R)	44,965	Imports	Mastics, Putty
31,799	33,335	30,364	29,827 (R)	33,175	Exports	
106,254	108,597 (R)	96,725	107,974 (R)	109,749	Imports	Paints & Varnishes
160,398	156,819 (R)	147,621 (R)	154,886 (R)	169,954	Exports	

* Due to changes to in European Commission product classifications Bituminous Roofing Felt and Other Asphalt products have been combined. Similarly, Zinc Pipes & Fittings and Other Zinc Building Products have been combined.

** Data for Lead Pipes and Fittings and Glass Fibre are no longer collected.

EXTERNAL TRADE

**Table 14 : Value of Overseas Trade in Selected Materials and Components
for Constructional Use : Imports (cif) & Exports (fob)**

United Kingdom		Current Prices (£'000)					
		2007	2008	2009	2010	2011	2012
Products & Components (continued)							
Unglazed Ceramic Tiles	Imports	64,691	71,099	62,181	56,551	63,864	62,449
	Exports	4,420	3,607	2,424	2,829	2,817	3,473
Glazed Ceramic Tiles	Imports	290,867	279,656	256,303	224,557	212,986	210,481
	Exports	20,554	17,706	15,671	15,455	18,784	17,616
Ceramic Sanitaryware	Imports	181,603	174,194	159,123	168,666	178,028	178,028
	Exports	58,229	53,471	37,635	37,883	37,259	32,173
Plastic Sanitaryware	Imports	126,472	120,004	114,695	112,513	109,817	107,300
	Exports	78,811	83,908	79,444	67,886	62,582	51,630
Metal Sanitaryware	Imports	139,820	143,118	111,737	124,666	136,536	121,981
	Exports	33,511	33,167	31,969	28,274	32,644	38,568
Flat Glass	Imports	71,800	61,061	53,819	61,048	64,992	65,254
	Exports	83,174	107,783	60,380	73,175	109,162	79,461
Other Glass Products	Imports	76,235	98,993	82,857	81,083	85,002	82,883
	Exports	37,712	40,296	34,188	33,081	32,612	32,277
Wood Veneers	Imports	38,516	39,407	26,102	31,681	36,202	33,643
	Exports	10,243	10,034	5,747	5,824	7,593	7,341
Wood Mouldings	Imports	73,907	64,579	55,648	66,802	59,139	58,455
	Exports	18,289	11,169	8,861	9,660	8,977	8,236
Wood Block Flooring	Imports	125,111	125,242	112,661	144,394	139,916	150,548
	Exports	5,465	6,136	5,746	4,535	4,540	4,801
Other Builder's Woodwork	Imports	109,023	101,242	80,645	99,394	89,758	89,209
	Exports	19,079	15,908	14,395	14,319	16,308	13,673
Windows (wood)	Imports	84,257	121,171	110,061	111,934	118,893	113,086
	Exports	12,880	10,219	10,721	7,786	9,885	8,572
Doors (wood)	Imports	205,158	209,133	184,609	217,810	202,006	190,705
	Exports	37,008	26,929	19,395	16,873	13,323	15,808
Doors & Windows (steel)	Imports	40,294	39,652	39,726	35,987	35,431	38,650
	Exports	25,824	26,300	20,643	19,222	18,996	23,981
Doors & Windows (aluminium)	Imports	65,655	63,705	64,279	72,365	70,526	71,969
	Exports	32,687	25,473	24,410	19,950	24,141	18,529
Doors & Windows (plastic)	Imports	39,459	39,377	43,885	46,337	52,738	56,590
	Exports	63,218	56,119	41,193	44,433	39,423	30,131
Cork Tiles	Imports	2,877	2,258	1,779	2,951	4,018	2,999
	Exports	1,611	1,641	1,702	1,646	2,139	1,835
Linoleum Floor Coverings	Imports	242,787	256,585	244,149	279,065	317,850	306,860
	Exports	195,735	224,522	213,628	228,832	233,662	214,599
Wallpaper	Imports	58,962	58,636	54,487	56,701	58,370	59,047
	Exports	67,165	73,506	66,782	82,940	85,873	76,111
Textile Wall Coverings	Imports	1,572	2,833	2,346	3,323	3,007	3,306
	Exports	598	500	357	609	688	623

EXTERNAL TRADE

Current Prices (£'000)

2012 Q2	Q3	Q4	2013 Q1	Q2	Products & Components (continued)	
16,494 942	15,225 1,020	14,336 510	18,062 (R) 600 (R)	17,633 672	Imports Exports	Unglazed Ceramic Tiles
60,746 (R) 5,132	52,402 4,278	45,592 (R) 4,193	55,023 (R) 4,469	49,323 5,089	Imports Exports	Glazed Ceramic Tiles
45,661 8,521	44,695 8,684	41,225 (R) 7,342	44,656 (R) 8,459 (R)	44,933 8,508	Imports Exports	Ceramic Sanitaryware
27,470 13,170 (R)	27,561 13,433 (R)	24,697 (R) 11,719	29,453 (R) 12,250 (R)	30,185 12,484	Imports Exports	Plastic Sanitaryware
31,709 8,710 (R)	30,501 9,889	28,599 (R) 11,621	32,082 (R) 9,403 (R)	30,031 9,908	Imports Exports	Metal Sanitaryware
16,076 19,601	17,536 15,269	15,893 16,543	11,796 (R) 12,438	10,995 12,177	Imports Exports	Flat Glass
22,263 7,818	21,437 8,868	17,910 7,397	18,440 (R) 6,039 (R)	21,016 6,354	Imports Exports	Other Glass Products
7,972 (R) 2,104	8,799 1,759	8,292 (R) 1,387	9,081 (R) 1,243	8,127 1,260	Imports Exports	Wood Veneers
16,829 (R) 2,018	13,866 2,272	12,692 1,870	14,889 (R) 1,795	17,402 2,117	Imports Exports	Wood Mouldings
40,819 1,138	42,648 1,272	34,194 1,213	34,658 1,206	33,357 1,074	Imports Exports	Wood Block Flooring
23,559 3,447	21,769 2,509	21,407 (R) 3,620	20,877 (R) 3,283 (R)	24,463 4,140	Imports Exports	Other Builder's Woodwork
27,356 2,026	27,568 2,420	28,506 (R) 2,396	26,170 1,676	29,757 2,096	Imports Exports	Windows (wood)
47,382 3,867	51,319 4,751	46,725 3,891	48,890 (R) 2,944	54,446 3,094	Imports Exports	Doors (wood)
10,779 5,982	9,400 6,439	8,977 6,668	9,044 (R) 7,560 (R)	9,550 5,267	Imports Exports	Doors & Windows (steel)
18,145 5,227	17,105 4,489	17,865 3,810	14,809 (R) 4,198 (R)	19,190 3,704	Imports Exports	Doors & Windows (aluminium)
16,319 7,789	14,976 7,537	11,411 7,656	12,898 (R) 6,589 (R)	14,931 7,498	Imports Exports	Doors & Windows (plastic)
754 434	650 476	864 344	792 476	833 527	Imports Exports	Cork Tiles
78,758 (R) 55,036 (R)	75,589 56,544 (R)	73,564 (R) 48,877 (R)	79,961 (R) 54,579 (R)	82,613 54,935	Imports Exports	Linoleum Floor Coverings
14,759 18,235 (R)	13,430 20,560	16,897 19,981	14,844 (R) 20,032 (R)	14,809 22,629	Imports Exports	Wallpaper
772 221	786 158	887 143	1,069 211	1,255 246	Imports Exports	Textile Wall Coverings

EXTERNAL TRADE

**Table 14 : Value of Overseas Trade in Selected Materials and Components
for Constructional Use : Imports (cif) & Exports (fob)**

United Kingdom		Current Prices (£'000)					
		2007	2008	2009	2010	2011	2012
Products & Components (continued)							
Fitted Kitchens (assembled)	Imports	144,017	171,688	130,058	111,345	80,006	81,101
	Exports	35,322	24,163	17,307	16,122	15,729	19,679
Prefabricated Buildings (wood)	Imports	49,086	40,341	34,264	32,687	34,909	30,816
	Exports	27,807	15,170	13,234	10,546	8,391	10,218
Prefabricated Buildings (steel)	Imports	30,083	50,546	46,291	29,783	37,366	26,665
	Exports	27,464	46,140	48,512	37,158	50,070	57,755
Prefabricated Buildings (other)	Imports	73,414	74,165	44,887	34,323	29,862	36,418
	Exports	35,795	72,310	28,104	17,643	19,082	27,935
Mobile Homes	Imports	7,113	6,574	5,065	2,165	1,430	2,188
	Exports	11,291	7,250	7,750	3,666	2,427	8,163
Taps & Valves	Imports	277,804	315,427	269,199	322,207	334,356	339,013
	Exports	72,708	60,597	64,447	73,202	69,125	88,358
Pumps (circulating)	Imports	24,274	21,754	19,900	21,878	22,061	27,735
	Exports	27,131	27,964	23,603	32,078	22,154	12,655
Central Heating Boilers	Imports	493,841	547,726	566,588	554,452	572,298	523,778
	Exports	70,581	80,756	91,053	74,832	77,852	72,150
Radiators	Imports	197,513	184,218	175,518	189,792	178,677	173,172
	Exports	46,937	57,884	34,303	31,085	28,270	36,831
Water Heaters	Imports	88,897	105,755	105,711	84,627	90,676	87,999
	Exports	64,471	84,810	64,883	63,036	67,672	59,349
Space Heaters	Imports	107,581	110,403	114,047	136,729	148,616	100,179
	Exports	37,313	35,118	32,068	32,001	32,926	23,271
Fan Systems	Imports	198,750	161,772	127,327	172,161	190,441	178,384
	Exports	94,651	114,006	107,846	109,339	124,299	137,847
Air Conditioning Equipment	Imports	514,454	644,353	462,588	527,857	576,155	521,929
	Exports	231,144	268,134	240,594	270,112	262,557	254,516
Air Purifying Equipment	Imports	29,828	41,389	50,854	53,220	66,549	70,947
	Exports	120,706	138,002	102,158	148,638	183,241	192,262
Hand Driers	Imports	4,057	7,634	7,443	8,987	10,496	10,346
	Exports	1,648	1,017	1,247	1,905	1,950	1,759
Meters	Imports	24,502	24,155	24,237	28,701	44,041	62,079
	Exports	26,216	47,988	42,969	52,825	72,518	75,045
Plugs & Sockets	Imports	231,664	269,479	257,049	303,121	329,210	339,083
	Exports	148,672	153,173	137,529	182,364	214,654	216,827
Electrical Wires	Imports	1,303,905	1,236,486	909,830	1,213,470	1,346,886	1,381,293
	Exports	521,508	554,723	425,815	515,544	571,975	512,077
Electrical Insulators	Imports	30,477	34,957	29,102	30,596	26,548	33,792
	Exports	33,830	32,548	26,983	32,574	30,485	28,458
Lamps & Fittings	Imports	449,230	462,930	424,435	515,852	520,951	598,919
	Exports	221,180	236,971	223,741	216,816	266,980	287,310
Fire & Security Alarms	Imports	144,891	139,973	136,550	151,642	122,662	141,729
	Exports	154,520	182,447	238,608	208,281	173,480	182,177
Lifts & Escalators	Imports	118,401	129,307	115,017	96,973	102,832	117,522
	Exports	43,142	28,699	19,697	14,628	21,220	21,745

EXTERNAL TRADE

Current Prices (£'000)

2012 Q2	Q3	Q4	2013 Q1	Q2	Products & Components (continued)	
21,353 (R) 3,069	19,989 (R) 7,333	20,189 (R) 5,617	20,188 (R) 5,877	19,327 7,665	Imports Exports	Fitted Kitchens (assembled)
6,689 1,764	10,500 3,177	5,951 3,380	9,280 (R) 457 (R)	14,789 734	Imports Exports	Prefabricated Buildings (wood)
8,037 11,446	8,223 13,368	3,541 25,175	10,494 (R) 14,056	8,625 11,824	Imports Exports	Prefabricated Buildings (steel)
11,254 5,068	7,868 4,009	5,111 6,632	5,078 2,785 (R)	7,058 10,761	Imports Exports	Prefabricated Buildings (other)
922 2,084	463 2,515	128 1,699	338 1,486	585 2,222	Imports Exports	Mobile Homes
85,717 (R) 21,176	91,768 (R) 20,075	76,749 25,837	91,435 (R) 19,885 (R)	87,922 24,677	Imports Exports	Taps & Valves
5,641 2,115	6,585 3,132	8,372 3,739	6,495 901	7,679 1,010	Imports Exports	Pumps (circulating)
113,106 18,229	122,877 17,060	166,841 22,227	146,859 (R) 16,947 (R)	133,698 16,401	Imports Exports	Central Heating Boilers
41,259 (R) 8,966	42,665 8,904	43,979 (R) 9,234	46,046 (R) 8,615 (R)	44,247 10,196	Imports Exports	Radiators
20,714 (R) 15,740	23,409 (R) 13,390	22,481 (R) 13,237	25,488 (R) 14,712 (R)	23,871 15,751	Imports Exports	Water Heaters
15,435 4,306	28,067 5,532	33,953 8,299	26,140 (R) 4,398 (R)	22,972 4,462	Imports Exports	Space Heaters
48,299 (R) 34,388 (R)	40,925 (R) 35,022 (R)	41,116 (R) 34,017	46,604 (R) 30,387 (R)	57,909 34,849	Imports Exports	Fan Systems
138,836 73,500	135,783 63,971 (R)	118,098 (R) 59,007	129,361 (R) 56,350 (R)	148,034 61,927	Imports Exports	Air Conditioning Equipment
21,480 51,100 (R)	15,936 (R) 49,825 (R)	17,651 (R) 46,281 (R)	14,806 (R) 52,190 (R)	16,752 59,388	Imports Exports	Air Purifying Equipment
2,575 292	2,562 501	2,564 456	2,637 293 (R)	3,106 346	Imports Exports	Hand Driers
14,237 20,252	14,600 15,180	16,677 17,705	13,838 17,443 (R)	12,225 22,231	Imports Exports	Meters
83,287 (R) 53,512	85,113 (R) 54,168 (R)	91,369 (R) 54,448 (R)	95,131 (R) 64,507 (R)	95,996 66,363	Imports Exports	Plugs & Sockets
359,465 (R) 126,602 (R)	336,764 (R) 120,783 (R)	318,301 (R) 124,920 (R)	338,155 (R) 138,871 (R)	374,636 133,043	Imports Exports	Electrical Wires
9,375 6,640	9,167 7,677 (R)	7,537 6,827 (R)	6,668 6,005	8,845 7,429	Imports Exports	Electrical Insulators
142,178 (R) 68,939 (R)	156,600 (R) 72,452 (R)	160,032 (R) 77,604	159,543 (R) 65,947 (R)	159,476 69,715	Imports Exports	Lamps & Fittings
33,751 (R) 43,402	35,159 47,455	38,174 46,091 (R)	38,348 (R) 48,064 (R)	42,157 44,915	Imports Exports	Fire & Security Alarms
30,061 (R) 6,135	33,090 7,858	29,999 4,272	26,239 (R) 3,147	27,182 16,544	Imports Exports	Lifts & Escalators

© Crown copyright 2013

Published under licence from the Controller of Her Majesty's Stationery Office.

Applications for reproductions should be made in writing to :-

The Copyright Unit, Her Majesty's Stationery Office, St. Clements House,
2-16 Colegate, Norwich NR3 1BQ

November 2013

URN BIS / 13 / 313k

ISSN 0264-6188