



# Permit with introductory note

## The Environmental Permitting (England & Wales) Regulations 2010

---

Equitix ESI CHP (Nottingham) Limited  
Widmerpool Biomass Power Plant  
Fosse Way  
Widmerpool  
Nottingham  
NG12 5PS

### **Permit number**

**EPR/QP3936AX**

# Widmerpool Biomass Power Plant

## Permit number EPR/QP3936AX

### Introductory note

#### This introductory note does not form a part of the permit

This permit controls the operation of a waste co-incineration plant. The relevant listed activity is Section 5.1 Part A1 (b). The permit implements the requirements of the EU Directives on Industrial Emissions and Waste.

The main features of the permit are as follows:

The installation is located on the John Brook saw Mill site, adjacent to the A46 Fosse Way near Widmerpool, Nottinghamshire. The installation is surrounded on all sides by agricultural land. The nearest residential properties are farm house situated approximately 200m to the south and west of the development site. There are a number of local wildlife sites within 2 km of the installation.

The biomass plant incinerates waste wood, using moving grate technology. There is one release point to air (A1) via a 37m stack. Emissions released from this point will undergo the following gas abatement prior to discharge:-

- SNCR (Selective Non-Catalytic Reduction) for reduction of NO<sub>x</sub> (Oxides of Nitrogen) using urea,
- Acid Gas Abatement (injection of dry lime),
- Activated Carbon (injected upstream of the fabric filter) for metals and dioxins, and
- Advanced bag (fabric) filter for particulate matter (and air pollution control (APC) residues).

Effluent from the process (made up of boiler blowdown and effluent from the reverse osmosis system) will be treated on site then transferred to the surface water drainage system that drains to the Fairham Brook. There will also be a discharge of uncontaminated surface water from roofs, roadways and hardstanding areas.

The biomass plant is designed to generate 6.7MWe of electricity of which 5.7MWe will be available for export to the grid. In addition the plant will provide 4.5MWth of process heat for use by a virgin timber drying plant to be developed separately on adjoining land. The installation will burn waste wood and is limited to 70,000 tonnes per year.

The status log of the permit sets out the permitting history, including any changes to the permit reference number.

Status log of the permit		
Description	Date	Comments
Application EPR/QP3936AX/A001	Duly made 12/02/2016	Application for 25.5MW thermal input co-incineration plant.
Schedule 5 Notice issued on 01/04/2016	Response received 20/05/2016	
Permit determined	01/08/2016	Permit issued to Equitix ESI CHP (Nottingham) Limited.

End of introductory note

# Permit

## The Environmental Permitting (England and Wales) Regulations 2010

### Permit number

**EPR/QP3936AX**

The Environment Agency hereby authorises, under regulation 13 of the Environmental Permitting (England and Wales) Regulations 2010

**Equitix ESI CHP (Nottingham) Limited (“the operator”),**

whose registered office is

**c/o Pinnacle Power Ltd  
Ground Floor  
6 St. Andrew Street  
Holborn  
London  
EC4A 3AE**

company registration number 09652769

to operate an installation at

**Widmerpool Biomass Power Plant  
Fosse Way  
Widmerpool  
Nottingham  
NG12 5PS**

to the extent authorised by and subject to the conditions of this permit.

Name	Date
Philip Lamb	01/08/2016

Authorised on behalf of the Environment Agency

# Conditions

## 1 Management

### 1.1 General management

- 1.1.1 The operator shall manage and operate the activities:
- (a) in accordance with a written management system that identifies and minimises risks of pollution, including those arising from operations, maintenance, accidents, incidents, non-conformances, closure and those drawn to the attention of the operator as a result of complaints; and
  - (b) using sufficient competent persons and resources.
- 1.1.2 Records demonstrating compliance with condition 1.1.1 shall be maintained.
- 1.1.3 Any person having duties that are or may be affected by the matters set out in this permit shall have convenient access to a copy of it kept at or near the place where those duties are carried out.

### 1.2 Energy efficiency

- 1.2.1 The operator shall:
- (a) take appropriate measures to ensure that energy is recovered with a high level of energy efficiency and energy is used efficiently in the activities.
  - (b) review and record at least every four years whether there are suitable opportunities to improve the energy efficiency of the activities; and
  - (c) take any further appropriate measures identified by a review.
- 1.2.2 The operator shall provide and maintain steam and/or hot water pass-outs such that opportunities for the further use of waste heat may be capitalised upon should they become practicable.
- 1.2.3 The operator shall review the viability of Combined Heat and Power (CHP) implementation at least every 4 years, or in response to any of the following factors, whichever comes sooner:
- (a) new plans for significant developments within 15 km of the installation;
  - (b) changes to the Local Plan;
  - (c) changes to the DECC UK CHP Development Map or similar; and
  - (d) new financial or fiscal incentives for CHP.

The results shall be reported to the Agency within 2 months of each review, including where there has been no change to the original assessment in respect of the above factors

### 1.3 Efficient use of raw materials

- 1.3.1 The operator shall:
- (a) take appropriate measures to ensure that raw materials and water are used efficiently in the activities;
  - (b) maintain records of raw materials and water used in the activities;
  - (c) review and record at least every four years whether there are suitable alternative materials that could reduce environmental impact or opportunities to improve the efficiency of raw material and water use; and
  - (d) take any further appropriate measures identified by a review.

## **1.4 Avoidance, recovery and disposal of wastes produced by the activities**

- 1.4.1 The operator shall take appropriate measures to ensure that:
- (a) the waste hierarchy referred to in Article 4 of the Waste Framework Directive is applied to the generation of waste by the activities; and
  - (b) any waste generated by the activities is treated in accordance with the waste hierarchy referred to in Article 4 of the Waste Framework Directive; and
  - (c) where disposal is necessary, this is undertaken in a manner which minimises its impact on the environment.
- 1.4.2 The operator shall review and record at least every four years whether changes to those measures should be made and take any further appropriate measures identified by a review.

## **2 Operations**

### **2.1 Permitted activities**

- 2.1.1 The operator is only authorised to carry out the activities specified in schedule 1 table S1.1 (the “activities”).
- 2.1.2 Waste authorised by this permit shall be clearly distinguished from any other waste on the site.

### **2.2 The site**

- 2.2.1 The activities shall not extend beyond the site, being the land shown edged in green on the site plan at schedule 7 to this permit.

### **2.3 Operating techniques**

- 2.3.1 The activities shall, subject to the conditions of this permit, be operated using the techniques and in the manner described in the documentation specified in schedule 1, table S1.2, unless otherwise agreed in writing by the Environment Agency.
- 2.3.2 If notified by the Environment Agency that the activities are giving rise to pollution, the operator shall submit to the Environment Agency for approval within the period specified, a revision of any plan specified in schedule 1, table S1.2 or otherwise required under this permit which identifies and minimises the risks of pollution relevant to that plan, and shall implement the approved revised plan in place of the original from the date of approval, unless otherwise agreed in writing by the Environment Agency.
- 2.3.3 Any raw materials or fuels listed in schedule 2 table S2.1 shall conform to the specifications set out in that table.
- 2.3.4 Waste shall only be accepted if:
- (a) it is of a type and quantity listed in schedule 2 table S2.2; and
  - (b) it conforms to the description in the documentation supplied by the producer and holder.
  - (c) it having been separately collected for recycling, it is subsequently unsuitable for recovery by recycling.
- 2.3.5 The operator shall ensure that where waste produced by the activities is sent to a relevant waste operation, that operation is provided with the following information, prior to the receipt of the waste:

- (a) the nature of the process producing the waste;
  - (b) the composition of the waste;
  - (c) the handling requirements of the waste;
  - (d) the hazardous property associated with the waste, if applicable; and
  - (e) the waste code of the waste.
- 2.3.6 The operator shall ensure that where waste produced by the activities is sent to a landfill site, it meets the waste acceptance criteria for that landfill.
- 2.3.7 Waste fuel shall not be charged, or shall cease to be charged, if:
- (a) the combustion chamber temperature is below, or falls below, 850°C, or
  - (b) any continuous emission limit value in schedule 3 table S3.1 is exceeded, other than under abnormal operating conditions ; or
  - (c) monitoring results required to demonstrate compliance with any continuous emission limit value in schedule 3 table S3.1 are unavailable other than under 'abnormal operating' conditions.
- 2.3.8 The operator shall have at least one auxiliary burner in each line at start up or shut down or whenever the operating temperature falls below that specified in condition 2.3.7, as long as incompletely burned waste is present in the combustion chamber. Unless the temperature specified in condition 2.3.7 is maintained in the combustion chamber, such burner(s) may be fed only with fuels which result in emissions no higher than those arising from the use of gas oil, liquefied gas or natural gas.
- 2.3.9 The operator shall record the beginning and end of each period of "abnormal operation".
- 2.3.10 During a period of "abnormal operation", the operator shall restore normal operation of the failed equipment or replace the failed equipment as rapidly as possible.
- 2.3.11 Where, during "abnormal operation", on a co-incineration line any of the following situations arise, waste shall cease to be charged on that line until normal operation can be restored:
- (a) continuous measurement shows that an emission exceeds any emission limit value in schedule 3 table S3.1 due to disturbances or failures of the abatement systems, or continuous emission monitor(s) are out of service as the case may be, for a total of 4 hours uninterrupted duration;
  - (b) the cumulative duration of "abnormal operation" periods over 1 calendar year has reached 60 hours.
  - (c) Continuous measurement shows that an emission exceeds any emission limit value in schedule 3 table S3.1 (a) due to disturbances or failures of the abatement systems;
  - (d) Continuous emission monitors or alternative techniques to demonstrate compliance with the emission limit value for particulates, TOC and/or CO in schedule 3 table S3.1 (a), as agreed in writing with the Environment Agency, are unavailable.
- 2.3.12 The operator shall interpret the end of the period of "abnormal operation" as the earliest of the following:
- (a) when the failed equipment is repaired and brought back into normal operation;
  - (b) when the operator initiates a shut down of the waste fuel combustion activity, as described in the application or as agreed in writing with the Environment Agency;
  - (c) when a period of four hours has elapsed from the start of the "abnormal operation";
  - (d) when, in any calendar year, an aggregated period of 60 hours "abnormal operation" has been reached.
- 2.3.13 Bottom ash and APC residues shall not be mixed.

## **2.4 Improvement programme**

- 2.4.1 The operator shall complete the improvements specified in schedule 1 table S1.3 by the date specified in that table unless otherwise agreed in writing by the Environment Agency.
- 2.4.2 Except in the case of an improvement which consists only of a submission to the Environment Agency, the operator shall notify the Environment Agency within 14 days of completion of each improvement.

## **2.5 Pre-operational conditions**

- 2.5.1 The activities shall not be brought into operation until the measures specified in schedule 1 table S1.4 have been completed.

# **3 Emissions and monitoring**

## **3.1 Emissions to water, air or land**

- 3.1.1 There shall be no point source emissions to water, air or land except from the sources and emission points listed in schedule 3 tables S3.1 and S3.2 except in “abnormal operation”, when there shall be no point source emissions to water, air or land except from the sources and emission points listed in schedule 3 tables S3.1(a) and S3.2.
- 3.1.2 The limits given in schedule 3 shall not be exceeded.
- 3.1.3 Wastes produced at the site shall, as a minimum, be sampled and analysed in accordance with schedule 3 table S3.4. Additional samples shall be taken and tested and appropriate action taken, whenever:
  - (a) disposal or recovery routes change; or
  - (b) it is suspected that the nature or composition of the waste has changed such that the route currently selected may no longer be appropriate.

## **3.2 Emissions of substances not controlled by emission limits**

- 3.2.1 Emissions of substances not controlled by emission limits (excluding odour) shall not cause pollution. The operator shall not be taken to have breached this condition if appropriate measures, including, but not limited to, those specified in any approved emissions management plan, have been taken to prevent or where that is not practicable, to minimise, those emissions.
- 3.2.2 The operator shall:
  - (a) if notified by the Environment Agency that the activities are giving rise to pollution, submit to the Environment Agency for approval within the period specified, an emissions management plan which identifies and minimises the risks of pollution from emissions of substances not controlled by emission limits;
  - (b) implement the approved emissions management plan, from the date of approval, unless otherwise agreed in writing by the Environment Agency.
- 3.2.3 All liquids in containers, whose emission to water or land could cause pollution, shall be provided with secondary containment, unless the operator has used other appropriate measures to prevent or where that is not practicable, to minimise, leakage and spillage from the primary container.
- 3.2.4 The Operator shall carry out monitoring of soil and groundwater in accordance with IED articles 14(1)(b), 14(1)(e) and 16(2) to the protocol agreed in writing with the Environment Agency under PO7.

### **3.3 Odour**

3.3.1 Emissions from the activities shall be free from odour at levels likely to cause pollution outside the site, as perceived by an authorised officer of the Environment Agency, unless the operator has used appropriate measures, including, but not limited to, those specified in any approved odour management plan, to prevent or where that is not practicable to minimise the odour.

3.3.2 The operator shall:

- (a) if notified by the Environment Agency that the activities are giving rise to pollution outside the site due to odour, submit to the Environment Agency for approval within the period specified, an odour management plan which identifies and minimises the risks of pollution from odour;
- (b) implement the approved odour management plan, from the date of approval, unless otherwise agreed in writing by the Environment Agency.

### **3.4 Noise and vibration**

3.4.1 Emissions from the activities shall be free from noise and vibration at levels likely to cause pollution outside the site, as perceived by an authorised officer of the Environment Agency, unless the operator has used appropriate measures, including, but not limited to, those specified in any approved noise and vibration management plan to prevent or where that is not practicable to minimise the noise and vibration.

3.4.2 The operator shall:

- (a) if notified by the Environment Agency that the activities are giving rise to pollution outside the site due to noise and vibration, submit to the Environment Agency for approval within the period specified, a noise and vibration management plan which identifies and minimises the risks of pollution from noise and vibration;
- (b) implement the approved noise and vibration management plan, from the date of approval, unless otherwise agreed in writing by the Environment Agency.

### **3.5 Monitoring**

3.5.1 The operator shall, unless otherwise agreed in writing by the Environment Agency, undertake the monitoring specified in the following tables in schedule 3 to this permit:

- (a) point source emissions specified in tables S3.1, S3.1(a) and S3.2;
- (b) process monitoring specified in table S3.3;
- (c) residue quality in table S3.4

3.5.2 The operator shall maintain records of all monitoring required by this permit including records of the taking and analysis of samples, instrument measurements (periodic and continual), calibrations, examinations, tests and surveys and any assessment or evaluation made on the basis of such data.

3.5.3 Monitoring equipment, techniques, personnel and organisations employed for the emissions monitoring programme and the environmental or other monitoring specified in condition 3.5.1 shall have either MCERTS certification or MCERTS accreditation (as appropriate) unless otherwise agreed in writing by the Environment Agency. Newly installed CEMs, or CEMs replacing existing CEMs, shall have MCERTS certification and have an MCERTS certified range which is not greater than 1.5 times the daily emission limit value (ELV) specified in schedule 3 table S3.1. The CEM shall also be able to measure instantaneous values over the ranges which are to be expected during all operating conditions. If it is necessary to use more than one range setting of the CEM to achieve this requirement, the CEM shall be verified for monitoring supplementary, higher ranges.



- 3.5.4 Permanent means of access shall be provided to enable sampling/monitoring to be carried out in relation to the emission points specified in schedule 3 tables S3.1, S3.1(a) and S3.2 unless otherwise agreed in writing by the Environment Agency.
- 3.5.5 Where Continuous Emission Monitors are installed to comply with the monitoring requirements in schedule 3 table S3.1; the Continuous Emission Monitors shall be used such that;
- (a) the values of the 95% confidence intervals of a single measured result at the daily emission limit value shall not exceed the following percentages of the emission limit values:
    - Carbon monoxide 10%
    - Sulphur dioxide 20%
    - Oxides of nitrogen (NO & NO<sub>2</sub> expressed as NO<sub>2</sub>) 20%
    - Particulate matter 30%
    - Total organic carbon (TOC) 30%
    - Hydrogen chloride 40%
  - (b) valid half-hourly average values shall be determined within the effective operating time (excluding the start-up and shut-down periods) from the measured values after having subtracted the value of the confidence intervals in condition 3.5.5 (a);
  - (c) where it is necessary to calibrate or maintain the monitor and this means that data are not available for a complete half-hour period, the half-hourly average shall in any case be considered valid if measurements are available for a minimum of 20 minutes during the half-hour. The number of half-hourly averages so validated shall not exceed 5 per day;
  - (d) daily average values shall be determined as the average of all the valid half-hourly average values within a calendar day. The daily average value shall be considered valid if no more than five half-hourly average in any day have been determined not to be valid;
  - (e) no more than ten daily average values per year shall be determined not to be valid.

## 3.6 Pests

- 3.6.1 The activities shall not give rise to the presence of pests which are likely to cause pollution, hazard or annoyance outside the boundary of the site. The operator shall not be taken to have breached this condition if appropriate measures, including, but not limited to, those specified in any approved pests management plan, have been taken to prevent or where that is not practicable, to minimise the presence of pests on the site.
- 3.6.2 The operator shall:
- (a) if notified by the Environment Agency, submit to the Environment Agency for approval within the period specified, a pests management plan which identifies and minimises risks of pollution from pests;
  - (b) implement the pests management plan, from the date of approval, unless otherwise agreed in writing by the Environment Agency.

## 3.7 Fire prevention

- 3.7.1 The operator shall take all appropriate measures to prevent fires on site and minimise the risk of pollution from them including, but not limited to, those specified in any approved fire prevention plan.

## 4 Information

### 4.1 Records

4.1.1 All records required to be made by this permit shall:

- (a) be legible;
- (b) be made as soon as reasonably practicable;
- (c) if amended, be amended in such a way that the original and any subsequent amendments remain legible, or are capable of retrieval; and
- (d) be retained, unless otherwise agreed in writing by the Environment Agency, for at least 6 years from the date when the records were made, or in the case of the following records until permit surrender:
  - (i) off-site environmental effects; and
  - (ii) matters which affect the condition of the land and groundwater.

4.1.2 The operator shall keep on site all records, plans and the management system required to be maintained by this permit, unless otherwise agreed in writing by the Environment Agency.

### 4.2 Reporting

4.2.1 The operator shall send all reports and notifications required by the permit to the Environment Agency using the contact details supplied in writing by the Environment Agency.

4.2.2 A report or reports on the performance of the activities over the previous year shall be submitted to the Environment Agency by 31 January (or other date agreed in writing by the Environment Agency) each year. The report(s) shall include as a minimum:

- (a) a review of the results of the monitoring and assessment carried out in accordance with the permit including an interpretive review of that data;
- (b) the annual production /treatment data set out in schedule 4 table S4.2; and
- (c) the performance parameters set out in schedule 4 table S4.3 using the forms specified in table S4.4 of that schedule.
- (d) the functioning and monitoring of the incineration plant in a format agreed with the Environment Agency. The report shall, as a minimum requirement (as required by Chapter IV of the Industrial Emissions Directive) give an account of the running of the process and the emissions into air and water compared with the emission standards in the IED.

4.2.3 Within 28 days of the end of the reporting period the operator shall, unless otherwise agreed in writing by the Environment Agency, submit reports of the monitoring and assessment carried out in accordance with the conditions of this permit, as follows:

- (a) in respect of the parameters and emission points specified in schedule 4 table S4.1;
- (b) for the reporting periods specified in schedule 4 table S4.1 and using the forms specified in schedule 4 table S4.4 ; and
- (c) giving the information from such results and assessments as may be required by the forms specified in those tables.

4.2.4 The operator shall, unless notice under this condition has been served within the preceding four years, submit to the Environment Agency, within six months of receipt of a written notice, a report assessing whether there are other appropriate measures that could be taken to prevent, or where that is not practicable, to minimise pollution.

- 4.2.5 Within 1 month of the end of each quarter, the operator shall submit to the Environment Agency using the form made available for the purpose, the information specified on the form relating to the site and the waste accepted and removed from it during the previous quarter.

### 4.3 Notifications

4.3.1 In the event:

- (a) that the operation of the activities gives rise to an incident or accident which significantly affects or may significantly affect the environment, the operator must immediately—
  - (i) inform the Environment Agency,
  - (ii) take the measures necessary to limit the environmental consequences of such an incident or accident, and
  - (iii) take the measures necessary to prevent further possible incidents or accidents;
- (b) of a breach of any permit condition the operator must immediately—
  - (i) inform the Environment Agency, and
  - (ii) take the measures necessary to ensure that compliance is restored within the shortest possible time;
- (c) of a breach of permit condition which poses an immediate danger to human health or threatens to cause an immediate significant adverse effect on the environment, the operator must immediately suspend the operation of the activities or the relevant part of it until compliance with the permit conditions has been restored.

4.3.2 Any information provided under condition 4.3.1 (a)(i), or 4.3.1 (b)(i) where the information relates to the breach of a limit specified in the permit, shall be confirmed by sending the information listed in schedule 5 to this permit within the time period specified in that schedule.

4.3.3 Where the Environment Agency has requested in writing that it shall be notified when the operator is to undertake monitoring and/or spot sampling, the operator shall inform the Environment Agency when the relevant monitoring and/or spot sampling is to take place. The operator shall provide this information to the Environment Agency at least 14 days before the date the monitoring is to be undertaken.

4.3.4 The Environment Agency shall be notified within 14 days of the occurrence of the following matters, except where such disclosure is prohibited by Stock Exchange rules:

Where the operator is a registered company:

- (a) any change in the operator's trading name, registered name or registered office address; and
- (b) any steps taken with a view to the operator going into administration, entering into a company voluntary arrangement or being wound up.

Where the operator is a corporate body other than a registered company:

- (a) any change in the operator's name or address; and
- (b) any steps taken with a view to the dissolution of the operator.

In any other case:

- (a) the death of any of the named operators (where the operator consists of more than one named individual);
- (b) any change in the operator's name(s) or address(es); and
- (c) any steps taken with a view to the operator, or any one of them, going into bankruptcy, entering into a composition or arrangement with creditors, or, in the case of them being in a partnership, dissolving the partnership.

- 4.3.5 Where the operator proposes to make a change in the nature or functioning, or an extension of the activities, which may have consequences for the environment and the change is not otherwise the subject of an application for approval under the Regulations or this permit:
- (a) the Environment Agency shall be notified at least 14 days before making the change; and
  - (b) the notification shall contain a description of the proposed change in operation.
- 4.3.6 The Environment Agency shall be given at least 14 days notice before implementation of any part of the site closure plan.

## **4.4 Interpretation**

- 4.4.1 In this permit the expressions listed in schedule 6 shall have the meaning given in that schedule.
- 4.4.2 In this permit references to reports and notifications mean written reports and notifications, except where reference is made to notification being made “immediately”, in which case it may be provided by telephone

# Schedule 1 – Operations

Table S1.1 activities		
Activity listed in Schedule 1 of the EP Regulations	Description of specified activity	Limits of specified activity
S5.1 A1 (b)	The incineration of non-hazardous waste in a waste co-incineration plant with a capacity of 3 tonnes per hour or more.	From receipt of waste to emission of exhaust gas and disposal of waste arising. Waste types and quantities as specified in Table S2.2 of this permit.
Directly Associated Activities		
Electricity Generation	Generation of electrical power using a steam turbine from energy recovered from the flue gases.	
Release to water body	Discharge of process effluent and uncontaminated surface water runoff to Fairham Brook.	Discharge shall only consist of treated process effluent and uncontaminated surface water as detailed on Raw and Waste Water Balance scheme drawing number H152C-TH-00-0017.
Back up electrical generator	For providing emergency electrical power to the plant in the event of supply interruption.	

Table S1.2 Operating techniques		
Description	Parts	Date Received
Application	<p>Application form responses to questions in Part B2 &amp; Part B3.</p> <p>Operating techniques described in:</p> <p>Appendix 1 Installation definition</p> <p>Appendix 2 Site plan and elevations drawings for biomass plant</p> <p>Appendix 3 Site condition report</p> <p>Appendix 5 Installation boundary of the regulated facility</p> <p>Appendix 6 Detailed description of the biomass power plant and directly associated activities</p> <p>Appendix A Non technical summary</p> <p>Appendix C Environmental Assessment based on H1</p> <p>Appendix D Detailed atmospheric dispersion modelling report</p> <p>Appendix F Proposals for monitoring emissions from the biomass power plant (excluding proposals for back up stacks monitoring superseded by response to question 13 in response to Schedule 5 Notice (Notice dated 01/04/2016) detailed below).</p> <p>Response to letter dated 19<sup>th</sup> January 2016 requesting additional information for duly making:</p>	12 <sup>th</sup> February 2016

<b>Table S1.2 Operating techniques</b>		
<b>Description</b>	<b>Parts</b>	<b>Date Received</b>
	Responses to question 1 to 5 – Information in support of the Detailed atmospheric dispersion modelling report Response to question 7: Revised noise assessment Response to question 6: Risk assessment	
Response to schedule 5 notice request (Notice dated 1 <sup>st</sup> April 2016)	Response to questions 2, 3, 4, 5, 6, 7, 8, 9, 10, 11, 13, 14, 15, 16, 17, 18, 19, 20, 21, 22, 23.	20 <sup>th</sup> May 2016
Additional information	Response to request for information sent via email on 20 <sup>th</sup> May 2016. Response to questions 1, 2, 3 & 4.	26 <sup>th</sup> May 2016
	Email containing Fire prevention plan - general plan layout drawing number H152C-G9-0034	27 <sup>th</sup> June 2016

<b>Table S1.3 Improvement programme requirements</b>		
<b>Reference</b>	<b>Requirement</b>	<b>Date</b>
<b>IC1</b>	The Operator shall submit a written report to the Environment Agency on the implementation of its Environmental Management System and the progress made in the certification of the system by an external body or if appropriate submit a schedule by which the EMS will be certified.	Within 12 months of the completion of commissioning.
<b>IC2</b>	The Operator shall submit a written proposal to the Environment Agency to carry out tests to determine the size distribution of the particulate matter in the exhaust gas emissions to air from emission point A1, identifying the fractions within the PM <sub>10</sub> , and PM <sub>2.5</sub> ranges. The proposal shall include a timetable for approval by the Environment Agency to carry out such tests and produce a report on the results. On receipt of written agreement by the Environment Agency to the proposal and the timetable, the Operator shall carry out the tests and submit to the Environment Agency a report on the results.	Within 6 months of the completion of commissioning.
<b>IC3</b>	The Operator shall submit a written report to the Environment Agency on the commissioning of the installation. The report shall summarise the environmental performance of the plant as installed against the design parameters set out in the Application. The report shall also include a review of the performance of the facility against the conditions of this permit and details of procedures developed during commissioning for achieving and demonstrating compliance with permit conditions and confirm that the Environmental Management System (EMS) has been updated accordingly. .	Within 4 months of the completion of commissioning.
<b>IC4</b>	The Operator shall carry out checks to verify the residence time, minimum temperature and oxygen content of the exhaust gases in the furnace whilst operating under the anticipated most unfavourable operating conditions. The results shall be submitted in writing to the Environment Agency and include a comparison with the CFD modelling submitted with PO5.	Within 4 months of the completion of commissioning.

<b>Table S1.3 Improvement programme requirements</b>		
<b>Reference</b>	<b>Requirement</b>	<b>Date</b>
<b>IC5</b>	<p>The Operator shall submit a written report to the Environment Agency describing the performance and optimisation of:</p> <ul style="list-style-type: none"> <li>• The Selective Non Catalytic Reduction (SNCR) system and combustion settings to minimise oxides of nitrogen (NO<sub>x</sub>). The report shall include an assessment of the level of NO<sub>x</sub>, N<sub>2</sub>O and NH<sub>3</sub> emissions that can be achieved under optimum operating conditions.</li> <li>• The [lime/sodium bicarbonate] injection system for minimisation of acid gas emissions</li> <li>• The carbon injection system for minimisation of dioxin and heavy metal emissions.</li> </ul>	Within 4 months of the completion of commissioning.
<b>IC6</b>	<p>The Operator shall submit a written summary report to the Agency to confirm by the results of calibration and verification testing that the performance of Continuous Emission Monitors for parameters as specified in Table S3.1 and Table S3.1(a) complies with the requirements of BS EN 14181, specifically the requirements of QAL1, QAL2 and QAL3.</p>	<p>Initial calibration report to be submitted to the Agency within 3 months of completion of commissioning.</p> <p>Full summary evidence compliance report to be submitted within 18 months of commissioning.</p>
<b>IC7</b>	<p>The operator shall submit to the Environment Agency for approval a plan for implementing the CHP scheme identified in the application (as detailed in documents referenced in table S1.2 of this permit).</p> <p>The plan shall include as a minimum:</p> <ul style="list-style-type: none"> <li>• A timescale for implementation</li> <li>• A description of any dependencies or further approvals required</li> <li>• A description of any changes that will need to be made to the plant</li> <li>• Whether there will be any operational changes which could affect the environmental impact of the installation such as a reduction in stack temperature.</li> <li>• Consideration of whether a permit variation will be required</li> </ul> <p>If required to do so by the Environment Agency they shall implement the plan in accordance with the Environment Agency's written approval.</p>	Within 4 months of the completion of commissioning.
<b>IC8</b>	<p>The Operator shall carry out an assessment of the impact of emissions to air of all the following component metals subject to emission limit values, lead, manganese, arsenic, chromium (VI) and nickel. A report on the assessment shall be made to the Environment Agency.</p> <p>Emissions monitoring data obtained during the first year of operation shall be used to compare the actual emissions with those assumed in the impact assessment submitted with the Application. An assessment shall be made of the impact of each metal against the relevant EQS/EAL. In the event that the assessment shows that an EQS/EAL can be exceeded, the report shall include proposals for further investigative work.</p>	15 months from the completion of commissioning

<b>Table S1.4A Pre-operational measures</b>	
<b>Reference</b>	<b>Pre-operational measures</b>
<b>PO1</b>	Prior to the commencement of commissioning, the Operator shall send a summary of the site Environment Management System (EMS) to the Environment Agency and make available for inspection all documents and procedures which form part of the EMS. The EMS shall be developed in line with the requirements set out in Section 1 of How to comply with your environmental permit – Getting the basics right. The documents and procedures set out in the EMS shall form the written management system referenced in condition 1.1.1 (a) of the permit.
<b>PO2</b>	Prior to the commencement of commissioning, the Operator shall submit to the Environment Agency for approval a protocol for the sampling and testing of incinerator bottom ash for the purposes of assessing its hazard status. Sampling and testing shall be carried out in accordance with the protocol as approved.
<b>PO3</b>	Prior to the commencement of commissioning; the Operator shall provide a written commissioning plan, including timelines for completion, for approval by the Environment Agency. The commissioning plan shall include the expected emissions to the environment during the different stages of commissioning, the expected durations of commissioning activities and the actions to be taken to protect the environment and report to the Environment Agency in the event that actual emissions exceed expected emissions. Commissioning shall be carried out in accordance with the commissioning plan as approved.
<b>PO4</b>	Prior to the commencement of commissioning, the Operator shall submit a written report to the Agency detailing the waste acceptance procedure to be used at the site. The waste acceptance procedure shall include the process and systems by which wastes unsuitable for incineration at the site will be controlled.  The procedure shall be implemented in accordance with the written approval from the Agency.
<b>PO5</b>	Prior to the commencement of commissioning the operator shall submit a written report to the Agency of the details of the computational fluid dynamic (CFD) modelling. The report shall demonstrate whether the design combustion conditions comply with the residence time and temperature requirements as defined by Chapter IV and Annex VI of the IED.
<b>PO6</b>	Prior to the commencement of commissioning, the Operator shall submit a report on the baseline conditions of soil and groundwater at the installation. The report shall contain the information necessary to determine the state of soil and groundwater contamination so as to make a quantified comparison with the state upon definitive cessation of activities provided for in Article 22(3) of the IED. The report shall contain information, supplementary to that already provided in application Site Condition Report, needed to meet the information requirements of Article 22(2) of the IED.
<b>PO7</b>	The Operator shall submit the written protocol referenced in condition 3.2.4 for the monitoring of soil and groundwater for approval by the Environment Agency. The protocol shall demonstrate how the Operator will meet the requirements of Articles 14(1)(b), 14(1)(e) and 16(2) of the IED.  The procedure shall be implemented in accordance with the written approval from the Agency.
<b>PO8</b>	At least three months before operation, the Operator shall submit a written report to the Environment Agency specifying arrangements for continuous and periodic



<b>Table S1.4A Pre-operational measures</b>	
<b>Reference</b>	<b>Pre-operational measures</b>
	<p>monitoring of emissions to air to comply with Environment Agency guidance notes M1 and M2. The report shall include the following:</p> <ul style="list-style-type: none"> <li>• Plant and equipment details, including accreditation to MCERTS</li> <li>• Methods and standards for sampling and analysis</li> <li>• Details of monitoring locations, access and working platforms</li> </ul>
<b>PO9</b>	The Operator shall submit to the Environment Agency for approval a plan showing the discharge point and monitoring sample point for emissions to water as detailed in table S3.2.

## Schedule 2 – Waste types, raw materials and fuels

Table S2.1 Raw materials and fuels	
Raw materials and fuel description	Specification
Fuel Oil	< 0.1% sulphur content

Table S2.2 Permitted waste types and quantities for co-incineration plant	
Maximum quantity	70,000 tonnes per year, based upon feedstock at 20% moisture content.
Waste code	Description
03	WASTES FROM WOOD PROCESSING AND THE PRODUCTION OF PANELS AND FURNITURE, PULP, PAPER AND CARDBOARD
03 01	Wastes from wood processing and the production of panels and furniture
03 01 05	sawdust, shavings, cuttings, wood, particle board and veneer other than those mentioned in 03 01 04
15	WASTE PACKAGING; ABSORBENTS, WIPING CLOTHS, FILTER MATERIALS AND PROTECTIVE CLOTHING NOT OTHERWISE SPECIFIED
15 01	packaging (including separately collected municipal packaging waste)
15 01 03	wooden packaging
17	CONSTRUCTION AND DEMOLITION WASTES (INCLUDING EXCAVATED SOIL FROM CONTAMINATED SITES)
17 02	wood, glass and plastic
17 02 01	wood
19	WASTES FROM WASTE MANAGEMENT FACILITIES, OFF-SITE WASTE WATER TREATMENT PLANTS AND THE PREPARATION OF WATER INTENDED FOR HUMAN CONSUMPTION AND WATER FOR INDUSTRIAL USE
19 12	wastes from the mechanical treatment of waste (for example sorting, crushing, compacting, pelletising) not otherwise specified
19 12 07	wood other than that mentioned in 19 12 06
20	MUNICIPAL WASTES (HOUSEHOLD WASTE AND SIMILAR COMMERCIAL, INDUSTRIAL AND INSTITUTIONAL WASTES) INCLUDING SEPARATELY COLLECTED FRACTIONS
20 01	separately collected fractions (except 15 01)
20 01 38	wood other than that mentioned in 20 01 37

## Schedule 3 – Emissions and monitoring

Table S3.1 Point source emissions to air – emission limits and monitoring requirements							
Emission point ref. & location	Parameter	Source	Limit (including unit)	Reference period	Monitoring frequency	Monitoring standard or method	
A1	Particulate matter	Exhaust Stack from thermal treatment unit	45 mg/m <sup>3</sup>	½ - hr average	Continuous measurement	BS EN 14181 and BS EN 15267-3	
			15 mg/m <sup>3</sup>	daily average			
A1	Total Organic Carbon (TOC)		30 mg/m <sup>3</sup>	½ - hr average			BS EN 14181 and BS EN 15267-3
			15 mg/m <sup>3</sup>	daily average			
A1	Hydrogen chloride		90 mg/m <sup>3</sup>	½ - hr average			BS EN 14181 and BS EN 15267-3
			15 mg/m <sup>3</sup>	daily average			
A1	Hydrogen fluoride		3 mg/m <sup>3</sup>	periodic over minimum 1-hour period	Quarterly in first year. Then Bi-annual	BS ISO 15713	
A1	Carbon monoxide		150 mg/m <sup>3</sup>	½ - hr average	Continuous measurement	BS EN 14181 and BS EN 15267-3	
			75 mg/m <sup>3</sup>	daily average			
A1	Sulphur dioxide		300 mg/m <sup>3</sup>	½ - hr average	BS EN 14181 and BS EN 15267-3		
		75 mg/m <sup>3</sup>	daily average				
A1	Oxides of nitrogen (NO and NO <sub>2</sub> expressed as NO <sub>2</sub> )	600 mg/m <sup>3</sup>	½ - hr average	BS EN 14181 and BS EN 15267-3			
		300 mg/m <sup>3</sup>	daily average				
A1	Cadmium & thallium and their compounds (total)	0.05 mg/m <sup>3</sup>	periodic over minimum 30 minute, maximum 8 hour period	Quarterly in first year. Then Bi-annual	BS EN 14385		

<b>Table S3.1 Point source emissions to air – emission limits and monitoring requirements</b>						
<b>Emission point ref. &amp; location</b>	<b>Parameter</b>	<b>Source</b>	<b>Limit (including unit)</b>	<b>Reference period</b>	<b>Monitoring frequency</b>	<b>Monitoring standard or method</b>
A1	Mercury and its compounds		0.05 mg/m <sup>3</sup>	periodic over minimum 30 minute, maximum 8 hour period		BS EN 13211
A1	Sb, As, Pb, Cr, Co, Cu, Mn, Ni and V and their compounds (total)		0.5 mg/m <sup>3</sup>	periodic over minimum 30 minute, maximum 8 hour period		BS EN 14385
A1	Ammonia (NH <sub>3</sub> )		No limit	daily average	Continuous measurement	BS EN 14181 and BS EN 15267-3
A1	Nitrous oxide (N <sub>2</sub> O)		No limit	periodic over minimum 1-hour period	For periodic measurement, quarterly in the first year of operation, then bi-annual	BS EN ISO 21258
A1	Dioxins / furans (I-TEQ)		0.1 ng/m <sup>3</sup>	periodic over minimum 6 hours, maximum 8 hour period	Quarterly in first year. Then Bi-annual	BS EN 1948 Parts 1, 2 and 3
A1	Dioxins / furans (WHO-TEQ Humans / Mammals)		-	periodic over minimum 6 hours, maximum 8 hour period		BS EN 1948 Parts 1, 2 and 3
A1	Dioxins / furans (WHO-TEQ Fish)		-	periodic over minimum 6 hours, maximum 8 hour period		BS EN 1948 Parts 1, 2 and 3
A1	Dioxins / furans (WHO-TEQ Birds)		-	periodic over minimum 6 hours, maximum 8 hour period		BS EN 1948 Parts 1, 2 and 3

<b>Table S3.1 Point source emissions to air – emission limits and monitoring requirements</b>						
<b>Emission point ref. &amp; location</b>	<b>Parameter</b>	<b>Source</b>	<b>Limit (including unit)</b>	<b>Reference period</b>	<b>Monitoring frequency</b>	<b>Monitoring standard or method</b>
A1	Dioxin-like PCBs (WHO-TEQ Humans / Mammals)		-	periodic over minimum 6 hours, maximum 8 hour period		BS EN 1948-4
A1	Dioxin-like PCBs (WHO-TEQ Fish)		-	periodic over minimum 6 hours, maximum 8 hour period		BS EN 1948-4
A1	Dioxin-like PCBs (WHO-TEQ Birds)		-	periodic over minimum 6 hours, maximum 8 hour period		BS EN 1948-4
A1	Specific individual polycyclic aromatic hydrocarbons (PAHs), as specified in Schedule 6.		-	periodic over minimum 6 hours, maximum 8 hour period		Procedure shall use BS ISO 11338-1 and BS-ISO 11338-2.

<b>Table S3.1(a) Point source emissions to air during abnormal operation of incineration plant – emission limits and monitoring requirements</b>						
<b>Emission point ref. &amp; location</b>	<b>Parameter</b>	<b>Source</b>	<b>Limit (including unit)</b>	<b>Reference period</b>	<b>Monitoring frequency</b>	<b>Monitoring standard or method</b>
A1	Particulate matter	Exhaust Stack from thermal treatment unit	225 mg/m <sup>3</sup>	½-hr average	Continuous measurement	BS EN 14181 and BS EN 15267-3
A1	Total Organic Carbon (TOC)		30 mg/m <sup>3</sup>	½-hr average	Continuous measurement	during abatement plant failure or during failure of the continuous emission monitor
A1	Carbon monoxide		150 mg/m <sup>3</sup>	½-hr average	Continuous measurement	

<b>Emission point ref. &amp; location</b>	<b>Source</b>	<b>Parameter</b>	<b>Limit (incl. unit)</b>	<b>Reference Period</b>	<b>Monitoring frequency</b>	<b>Monitoring standard or method</b>
W1 – Point of discharge to from the site to drainage ditch leading to Fairham Brook (location to be agreed in accordance with PO9 in table S1.4)	Process effluent and uncontaminated surface water	Temperature	25°C	Spot sample	Daily	In accordance with Environment Agency guidance note M18 or such other subsequent guidance as may be agreed in writing with the Environment Agency
		pH	6-9			
		Oil and grease	Non visible			
		Suspended solids	30 mg/l		Monthly	
		Total Phosphorus	No limit			
		Copper	No limit			
		Lead	No limit			

<b>Emission point reference or source or description of point of measurement</b>	<b>Parameter</b>	<b>Monitoring frequency</b>	<b>Monitoring standard or method</b>	<b>Other specifications</b>
As agreed in writing with Environment Agency	Wind Speed and Direction	Continuous	Anemometer	
Location close to the Combustion Chamber inner wall or as identified and justified in Application.	Temperature (° C)	Continuous	Traceable to national standards	As agreed in writing with the Agency.
A1	Exhaust gas temperature	Continuous	Traceable to national standards	As agreed in writing with the Agency.
A1	Exhaust gas pressure	Continuous	Traceable to national standards	As agreed in writing with the Agency.
A1	Exhaust gas oxygen content	Continuous	BS EN 15267-3 BS EN 14181	
A1	Exhaust gas water vapour content	Continuous	BS EN 15267-3 BS EN 14181	Unless gas is dried before analysis of emissions.

**Table S3.4 Residue quality**

Emission point reference or source or description of point of measurement	Parameter	Limit	Monitoring frequency	Monitoring standard or method *	Other specifications
Bottom Ash	TOC	<3%	Monthly in the first year of operation. Then Quarterly	Environment Agency Guidance, 'TGN M4 – Guidelines for Ash Sampling and Analysis'	
Bottom Ash	Metals (Antimony, Cadmium, Thallium, Mercury, Lead, Chromium, Copper, Manganese, Nickel, Arsenic, Cobalt, Vanadium, Zinc) and their compounds, dioxins/furans and dioxin-like PCBs.	-	Monthly in the first year of operation. Then Quarterly	Environment Agency Guidance, 'TGN M4 – Guidelines for Ash Sampling and Analysis'	
Bottom Ash	Total soluble fraction and metals (Antimony, Cadmium, Thallium, Mercury, Lead, Chromium, Copper, Manganese, Nickel, Arsenic, Cobalt, Vanadium, Zinc) soluble fractions	-	Before use of a new disposal or recycling route	Environment Agency Guidance, 'TGN M4 – Guidelines for Ash Sampling and Analysis'	
APC Residues	Metals (Antimony, Cadmium, Thallium, Mercury, Lead, Chromium, Copper, Manganese, Nickel, Arsenic, Cobalt, Vanadium, Zinc) and their compounds, dioxins/furans and dioxin-like PCBs.	-	Monthly in the first year of operation. Then Quarterly	Environment Agency Guidance, 'TGN M4 – Guidelines for Ash Sampling and Analysis'	
APC Residues	Total soluble fraction and metals (Antimony, Cadmium, Thallium, Mercury, Lead, Chromium, Copper, Manganese, Nickel, Arsenic,	-	Before use of a new disposal or recycling route	Environment Agency Guidance, 'TGN M4 – Guidelines for Ash Sampling and Analysis'	

<b>Table S3.4 Residue quality</b>					
<b>Emission point reference or source or description of point of measurement</b>	<b>Parameter</b>	<b>Limit</b>	<b>Monitoring frequency</b>	<b>Monitoring standard or method *</b>	<b>Other specifications</b>
	Cobalt, Vanadium, Zinc) soluble fractions				

\* Or other equivalent standard as agreed in writing with the Environment Agency.



## Schedule 4 – Reporting

Parameters, for which reports shall be made, in accordance with conditions of this permit, are listed below.

<b>Table S4.1 Reporting of monitoring data</b>			
<b>Parameter</b>	<b>Emission or monitoring point/reference</b>	<b>Reporting period</b>	<b>Period begins</b>
Emissions to air Parameters as required by condition 3.5.1	A1	Quarterly	1 Jan, 1 Apr, 1 Jul and 1 Oct
Emissions to water Parameters as required by condition 3.5.1	W1	Quarterly	1 Jan, 1 Apr, 1 Jul and 1 Oct <i>or</i> 1 Jan
TOC Parameters as required by condition 3.5.1	Bottom Ash	Quarterly (but monthly for the first year of operation)	1 Jan, 1 Apr, 1 Jul and 1 Oct
Metals (Antimony, Cadmium, Thallium, Mercury, Lead, Chromium, Copper, Manganese, Nickel, Arsenic, Cobalt, Vanadium, Zinc) and their compounds, dioxins/furans and dioxin-like PCBs Parameters as required by condition 3.5.1	Bottom Ash	Quarterly (but monthly for the first year of operation)	1 Jan, 1 Apr, 1 Jul and 1 Oct
Total soluble fraction and metals (Antimony, Cadmium, Thallium, Mercury, Lead, Chromium, Copper, Manganese, Nickel, Arsenic, Cobalt, Vanadium, Zinc) soluble fractions Parameters as required by condition 3.5.1	Bottom Ash	Before use of a new disposal or recycling route	
Metals (Antimony, Cadmium, Thallium, Mercury, Lead, Chromium, Copper, Manganese, Nickel, Arsenic, Cobalt, Vanadium, Zinc) and their compounds, dioxins/furans and dioxin-like PCBs Parameters as required by condition 3.5.1	APC Residues	Quarterly (but monthly for the first year of operation)	1 Jan, 1 Apr, 1 Jul and 1 Oct
Total soluble fraction and metals (Antimony, Cadmium, Thallium, Mercury, Lead, Chromium, Copper, Manganese, Nickel, Arsenic, Cobalt, Vanadium, Zinc) soluble fractions Parameters as required by condition 3.5.1	APC Residues	Before use of a new disposal or recycling route	
Functioning and monitoring of the incineration plant as required by condition 4.2.2		Annually	1 Jan

<b>Parameter</b>	<b>Units</b>
Total Wood Waste co-incinerated	tonnes
Electrical energy produced	KWhrs
Thermal energy produced e.g. steam for export	KWhrs
Electrical energy exported	KWhrs
Electrical energy used on installation	KWhrs
Waste heat utilised by the installation	KWhrs

<b>Parameter</b>	<b>Frequency of assessment</b>	<b>Units</b>
Electrical energy exported, imported and used at the installation	Annually	KWhrs / tonne of waste incinerated
Fuel oil consumption	Annually	Kgs / tonne of waste incinerated
Mass of Bottom Ash produced	Annually	Kgs / tonne of waste incinerated
Mass of APC residues produced	Annually	Kgs / tonne of waste incinerated
Mass of Other solid residues produced	Annually	Kgs / tonne of waste incinerated
Urea consumption	Annually	Kgs / tonne of waste incinerated
Activated Carbon consumption	Annually	Kgs / tonne of waste incinerated
Lime consumption	Annually	Kgs / tonne of waste incinerated
Water consumption	Annually	Kgs / tonne of waste incinerated
Periods of abnormal operation	Annually	No of occasions and cumulative hours for current calendar year for each line.

<b>Media/parameter</b>	<b>Reporting format</b>	<b>Date of form</b>
Air	Form air 1 or other form as agreed in writing by the Environment Agency	01/08/2016
Water and Land	Form water 1 or other form as agreed in writing by the Environment Agency	01/08/2016
Water usage	Form water usage 1 or other form as agreed in writing by the Environment Agency	01/08/2016
Energy usage	Form energy 1 or other form as agreed in writing by the Environment Agency	01/08/2016

<b>Table S4.4 Reporting forms</b>		
<b>Media/parameter</b>	<b>Reporting format</b>	<b>Date of form</b>
Waste disposal/recovery	Form R1 or other form as agreed in writing by the Environment Agency	01/08/2016
Residue quality	Form residue 1 or other form as agreed in writing by the Environment Agency	01/08/2016
Other performance indicators	Form performance 1 or other form as agreed in writing by the Environment Agency	01/08/2016

# Schedule 5 – Notification

These pages outline the information that the operator must provide.

Units of measurement used in information supplied under Part A and B requirements shall be appropriate to the circumstances of the emission. Where appropriate, a comparison should be made of actual emissions and authorised emission limits.

If any information is considered commercially confidential, it should be separated from non-confidential information, supplied on a separate sheet and accompanied by an application for commercial confidentiality under the provisions of the EP Regulations.

## Part A

Permit Number	
Name of operator	
Location of Facility	
Time and date of the detection	

<b>(a) Notification requirements for any malfunction, breakdown or failure of equipment or techniques, accident, or emission of a substance not controlled by an emission limit which has caused, is causing or may cause significant pollution</b>	
<b>To be notified within 24 hours of detection</b>	
Date and time of the event	
Reference or description of the location of the event	
Description of where any release into the environment took place	
Substances(s) potentially released	
Best estimate of the quantity or rate of release of substances	
Measures taken, or intended to be taken, to stop any emission	
Description of the failure or accident.	

<b>(b) Notification requirements for the breach of a limit</b>	
<b>To be notified within 24 hours of detection unless otherwise specified below</b>	
Emission point reference/ source	
Parameter(s)	
Limit	
Measured value and uncertainty	
Date and time of monitoring	

<b>(b) Notification requirements for the breach of a limit</b>	
<b>To be notified within 24 hours of detection unless otherwise specified below</b>	
Measures taken, or intended to be taken, to stop the emission	

<b>Time periods for notification following detection of a breach of a limit</b>	
<b>Parameter</b>	<b>Notification period</b>

<b>(c) Notification requirements for the detection of any significant adverse environmental effect</b>	
<b>To be notified within 24 hours of detection</b>	
Description of where the effect on the environment was detected	
Substances(s) detected	
Concentrations of substances detected	
Date of monitoring/sampling	

## Part B – to be submitted as soon as practicable

Any more accurate information on the matters for notification under Part A.	
Measures taken, or intended to be taken, to prevent a recurrence of the incident	
Measures taken, or intended to be taken, to rectify, limit or prevent any pollution of the environment which has been or may be caused by the emission	
The dates of any unauthorised emissions from the facility in the preceding 24 months.	

Name*	
Post	
Signature	
Date	

\* authorised to sign on behalf of the operator

## Schedule 6 – Interpretation

“abatement equipment” means that equipment dedicated to the removal of polluting substances from releases from the installation to air or water media.

“*abnormal operation*” means any technically unavoidable stoppages, disturbances, or failures of the abatement plant or the measurement devices, during which the emissions into the air and the discharges of waste water may exceed the prescribed emission limit values

“accident” means an accident that may result in pollution.

“APC residues” means air pollution control residues

“application” means the application for this permit, together with any additional information supplied by the operator as part of the application and any response to a notice served under Schedule 5 to the EP Regulations.

“authorised officer” means any person authorised by the Environment Agency under section 108(1) of The Environment Act 1995 to exercise, in accordance with the terms of any such authorisation, any power specified in section 108(4) of that Act.

“bottom ash” means ash falling through the grate/transported by the grate;

“CEM” Continuous emission monitor

“CEN” means Comité Européen de Normalisation “bi-annual” means twice per year with at least five months between tests;

“Commissioning” means testing of the new incineration plant that involves any operation of the furnace or as agreed with the Environment Agency.

“daily average” for releases of substances to air means the average of valid half-hourly averages over [a calendar day during normal operation.

“dioxin and furans” means polychlorinated dibenzo-p-dioxins and polychlorinated dibenzofurans.

“disposal”. Means any of the operations provided for in Annex I to Directive 2008/98/EC of the European Parliament and of the Council on waste.

“EP Regulations” means The Environmental Permitting (England and Wales) Regulations SI 2010 No.675 and words and expressions used in this permit which are also used in the Regulations have the same meanings as in those Regulations.

“emissions of substances not controlled by emission limits” means emissions of substances to air, water or land from the activities, either from the emission points specified in schedule 3 or from other localised or diffuse sources, which are not controlled by an emission limit.

“groundwater” means all water, which is below the surface of the ground in the saturation zone and in direct contact with the ground or subsoil.

“incineration line” means all of the incineration equipment related to a common discharge to air location.

“Industrial Emissions Directive” means DIRECTIVE 2010/75/EU OF THE EUROPEAN PARLIAMENT AND OF THE COUNCIL of 24 November 2010 on industrial emissions

“ISO” means International Standards Organisation.

‘*List of Wastes*’ means the list of wastes established by Commission Decision 2000/532/EC replacing Decision 94/3/EC establishing a list of wastes pursuant to Article 1(a) of Council Directive 75/442/EEC on waste and Council Decision 94/904/EC establishing a list of hazardous waste pursuant to Article 1(4) of Council Directive 91/689/EEC on hazardous waste, as amended from time to time

“LOI” means loss on ignition a technique used to determine the combustible material by heating the ash residue to a high temperature

“MCERTS” means the Environment Agency’s Monitoring Certification Scheme.

“PAH” means Poly-cyclic aromatic hydrocarbon, and comprises Anthanthrene, Benzo[a]anthracene, Benzo[b]fluoranthene, Benzo[k]fluoranthene, Benzo[b]naph(2,1-d)thiophene, Benzo[c]phenanthrene, Benzo[ghi]perylene, Benzo[a]pyrene, Cholanthrene, Chrysene, Cyclopenta[c,d]pyrene, Dibenzo[ah]anthracene, Dibenzo[a,i]pyrene Fluoranthene, Indo[1,2,3-cd]pyrene, Naphthalene

“PCB” means Polychlorinated Biphenyl. Dioxin-like PCBs are the non-ortho and mono-ortho PCBs listed in the table below.

Pests” means Birds, Vermin and Insects.

“quarter” means a calendar year quarter commencing on 1 January, 1 April, 1 July or 1 October.

“recovery” means any of the operations provided for in Annex II to Directive 2008/98/EC of the European Parliament and of the Council on waste.

“shut down” is any period where the plant is being returned to a non-operational state and there is no waste being burned.

“start up” is any period, where the plant has been non-operational, after igniting the auxiliary burner until waste fuel has been fed to the plant [in sufficient quantity to cover the grate and] to initiate steady-state conditions.

“TOC” means Total Organic Carbon. In respect of releases to air, this means the gaseous and vaporous organic substances, expressed as TOC. In respect of Bottom Ash, this means the total carbon content of all organic species present in the ash (excluding carbon in elemental form).

‘Waste code’ means the six digit code referable to a type of waste in accordance with the List of Wastes and in relation to hazardous waste, includes the asterisk

“Waste Framework Directive” or “WFD” means Waste Framework Directive 2008/98/EC of the European Parliament and of the Council on waste

“year” means calendar year ending 31 December.

Where a minimum limit is set for any emission parameter, for example pH, reference to exceeding the limit shall mean that the parameter shall not be less than that limit.

Unless otherwise stated, any references in this permit to concentrations of substances in emissions into air means:

- (a) in relation to gases from co-incineration plants the concentration in dry air at a temperature of 273K, at a pressure of 101.3 kPa and with an oxygen content of 6% dry

For dioxins/furans and dioxin-like PCBs the determination of the toxic equivalence concentration (I-TEQ, & WHO-TEQ for dioxins/furans, WHO-TEQ for dioxin-like PCBs) stated as a release limit and/ or reporting requirement, the mass concentrations of the following congeners have to be multiplied with their respective toxic equivalence factors before summing. When reporting on measurements of dioxins/furans and dioxin-like PCBs, the toxic equivalence concentrations should be reported as a range based on: all congeners less than the detection limit assumed to be zero as a minimum, and all congeners less than the detection limit assumed to be at the detection limit as a maximum. However the minimum value should be used when assessing compliance with the emission limit value in table S3.1.

TEF schemes for dioxins and furans				
Congener	I-TEF	WHO-TEF		
	1990	2005	1997/8	
		Humans / Mammals	Fish	Birds

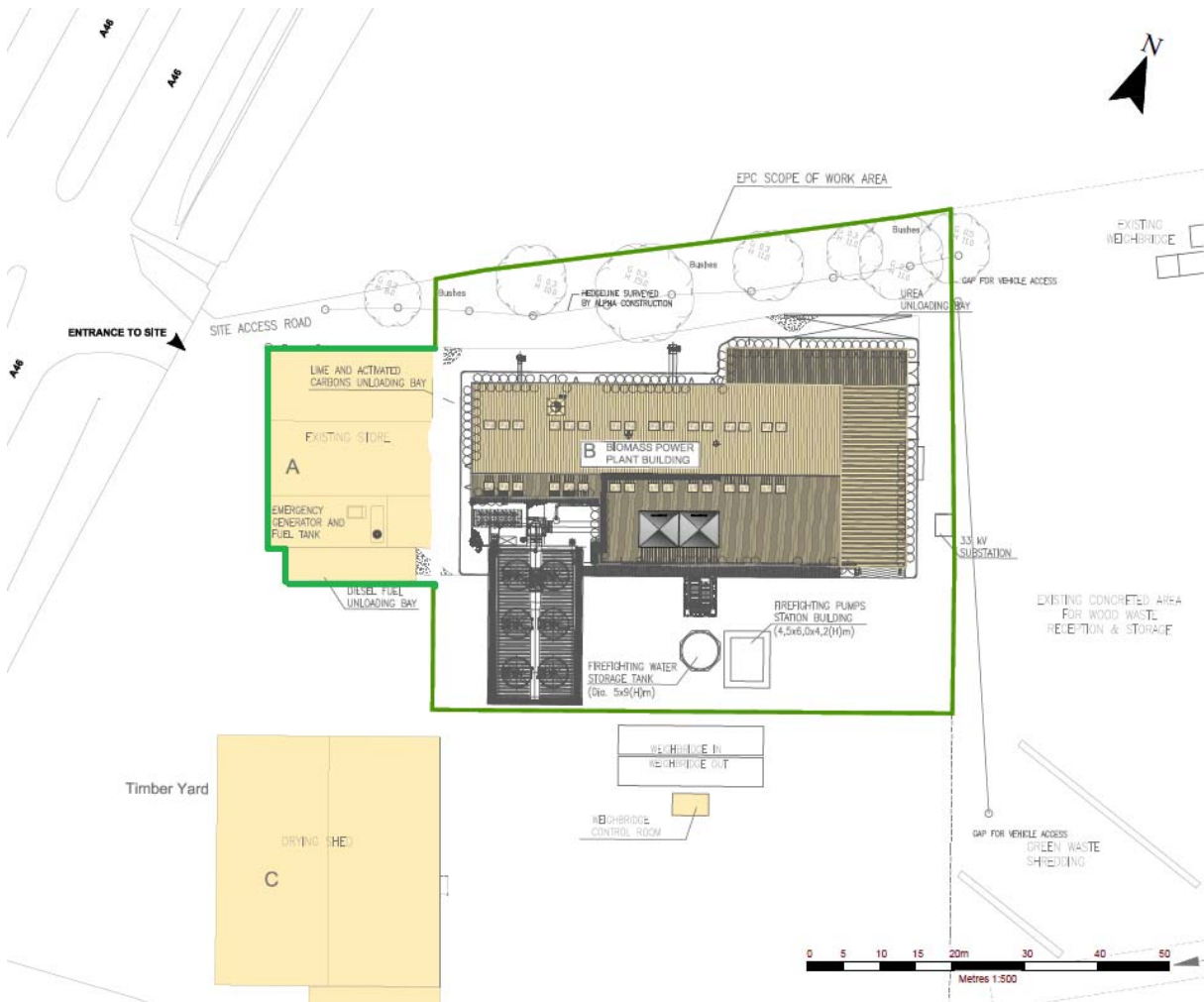
TEF schemes for dioxins and furans				
Congener	I-TEF	WHO-TEF		
	1990	2005	1997/8	
<b>Dioxins</b>				
2,3,7,8-TCDD	1	1	1	1
1,2,3,7,8-PeCDD	0.5	1	1	1
1,2,3,4,7,8-HxCDD	0.1	0.1	0.5	0.05
1,2,3,6,7,8-HxCDD	0.1	0.1	0.01	0.01
1,2,3,7,8,9-HxCDD	0.1	0.1	0.01	0.1
1,2,3,4,6,7,8-HpCDD	0.01	0.01	0.001	<0.001
OCDD	0.001	0.0003	-	-
<b>Furans</b>				
2,3,7,8-TCDF	0.1	0.1	0.05	1
1,2,3,7,8-PeCDF	0.05	0.03	0.05	0.1
2,3,4,7,8-PeCDF	0.5	0.3	0.5	1
1,2,3,4,7,8-HxCDF	0.1	0.1	0.1	0.1
1,2,3,7,8,9-HxCDF	0.1	0.1	0.1	0.1
1,2,3,6,7,8-HxCDF	0.1	0.1	0.1	0.1
2,3,4,6,7,8-HxCDF	0.1	0.1	0.1	0.1
1,2,3,4,6,7,8-HpCDF	0.01	0.01	0.01	0.01
1,2,3,4,7,8,9-HpCDF	0.01	0.01	0.01	0.01
OCDF	0.001	0.0003	0.0001	0.0001

TEF schemes for dioxin-like PCBs			
Congener	WHO-TEF		
	2005	1997/8	
	Humans / mammals	Fish	Birds
<b>Non-ortho PCBs</b>			
3,4,4',5-TCB (81)	0.0001	0.0005	0.1
3,3',4,4'-TCB (77)	0.0003	0.0001	0.05
3,3',4,4',5 - PeCB (126)	0.1	0.005	0.1
3,3',4,4',5,5'-HxCB(169)	0.03	0.00005	0.001
<b>Mono-ortho PCBs</b>			
2,3,3',4,4'-PeCB (105)	0.00003	<0.000005	0.0001
2,3,4,4',5-PeCB (114)	0.00003	<0.000005	0.0001
2,3',4,4',5-PeCB (118)	0.00003	<0.000005	0.00001
2',3,4,4',5-PeCB (123)	0.00003	<0.000005	0.00001



TEF schemes for dioxin-like PCBs			
Congener	WHO-TEF		
	2005	1997/8	
	Humans / mammals	Fish	Birds
2,3,3',4,4',5-HxCB (156)	0.00003	<0.000005	0.0001
2,3,3',4,4',5'-HxCB (157)	0.00003	<0.000005	0.0001
2,3',4,4',5,5'-HxCB (167)	0.00003	<0.000005	0.00001
2,3,3',4,4',5,5'-HpCB (189)	0.00003	<0.000005	0.00001

# Schedule 7 – Site plan



END OF PERMIT