



16 January 2014

## United Kingdom Slaughter Statistics – December 2013

### Contents

Section 1	Monthly numbers of home killed livestock slaughtered	page 2
Section 2	Average dressed carcase weights	page 2
Section 3	Monthly volumes of home killed meat production	page 3
Section 4	Average weekly numbers of livestock slaughtered	page 3 to page 4
Section 5	Monthly numbers of livestock slaughtered by country	page 5
Section 6	Methodology, notes and revisions policy	page 6

### Key points

This release shows the latest monthly information on the slaughtering of cattle, sheep and pigs. It also includes dressed carcase weight and meat production information. The key results for **December 2013** are given below:

- **Cattle:** UK prime cattle (steers, heifers and young bulls) slaughterings were 1.1 per cent lower than in December 2012 at 138 thousand head. Beef and veal production was 61 thousand tonnes, 3.7 per cent lower than in December 2012.
- **Sheep:** UK clean sheep slaughterings were 2.8 per cent higher than in December 2012 at 1083 thousand head. Mutton and lamb production was 25 thousand tonnes, 6.2 per cent higher than in December 2012.
- **Pigs:** UK clean pig slaughterings were 1.0 per cent lower than in December 2012 at 758 thousand head. Pigmeat production was 62 thousand tonnes, 0.4 per cent higher than in December 2012.

This notice will be updated at 09:30 on 20 February 2014. Additional time series which include weekly slaughter averages, production and trade data can be found at <https://www.gov.uk/government/publications/cattle-sheep-and-pig-slaughter>

---

**Enquiries on this publication to:** Sarah Thompson, Department for Environment, Food and Rural Affairs, Room 201, Foss House, Kings Pool, 1 - 2 Peasholme Green, York YO1 7PX.  
Tel: ++ 44 (0)1904 455097, email:sarah.thompson@defra.gsi.gov.uk

**A National Statistics publication.** National Statistics are produced to high professional standards. They undergo regular quality assurance reviews to ensure that they meet customer needs. They are produced free from any political interference. For general enquiries about National Statistics, contact the National Statistics Public Enquiry Service: tel. 0845 601 3034 email [info@statistics.gov.uk](mailto:info@statistics.gov.uk). You can also find National Statistics on the internet at <http://www.statistics.gov.uk/>.

## Section 1: Monthly numbers of home killed livestock slaughtered

Table 1 shows monthly estimates of the number of home killed cattle, sheep and pigs, slaughtered as meat for human consumption in UK abattoirs. The survey is run according to statistical, rather than calendar months, the number of weeks in the statistical month is specified below.

**Table 1: United Kingdom monthly numbers of livestock slaughtered** thousand head

	October 2013 5 weeks	November 2013 4 weeks	December 2013 4 weeks
Steers	96	74	64
Heifers	74	62	54
Young Bulls	27	23	20
Cows and Adult Bulls	68	58	43
Calves	11	8	6
Other Sheep and Lambs	1506	1083	1083
Ewes and Rams	237	168	173
Clean Pigs	1012	826	758
Sows and Boars	24	19	16

## Section 2: Average dressed carcass weights

Table 2 shows the monthly average dressed carcass weight of livestock slaughtered for meat for human consumption in the United Kingdom.

**Table 2: United Kingdom average dressed carcass weights** kilogramme

	October 2013	November 2013	December 2013
Steers	355.1	356.3	360.3
Heifers	314.5	316.1	317.9
Young Bulls	336.7	336.5	336.9
Cows and Adult Bulls	304.7	305.0	307.3
Calves	46.1	51.0	51.2
Other Sheep and Lambs	19.0	19.1	18.6
Ewes and Rams	25.3	25.9	25.7
Clean Pigs	80.3	80.2	79.2
Sows and Boars	153.2	144.4	152.7

### Section 3: Monthly volumes of home killed meat production

Table 3 shows the monthly volumes of meat produced in UK abattoirs. Data is shown according to statistical, rather than calendar months, number of weeks in statistical month as specified.

**Table 3: United Kingdom monthly volumes of meat production** thousand tonnes

	October 2013 5 weeks	November 2013 4 weeks	December 2013 4 weeks
Beef	88	71	61
Mutton and Lamb	35	25	25
Pigmeat	85	69	62

### Section 4: Average weekly numbers of home killed livestock slaughtered

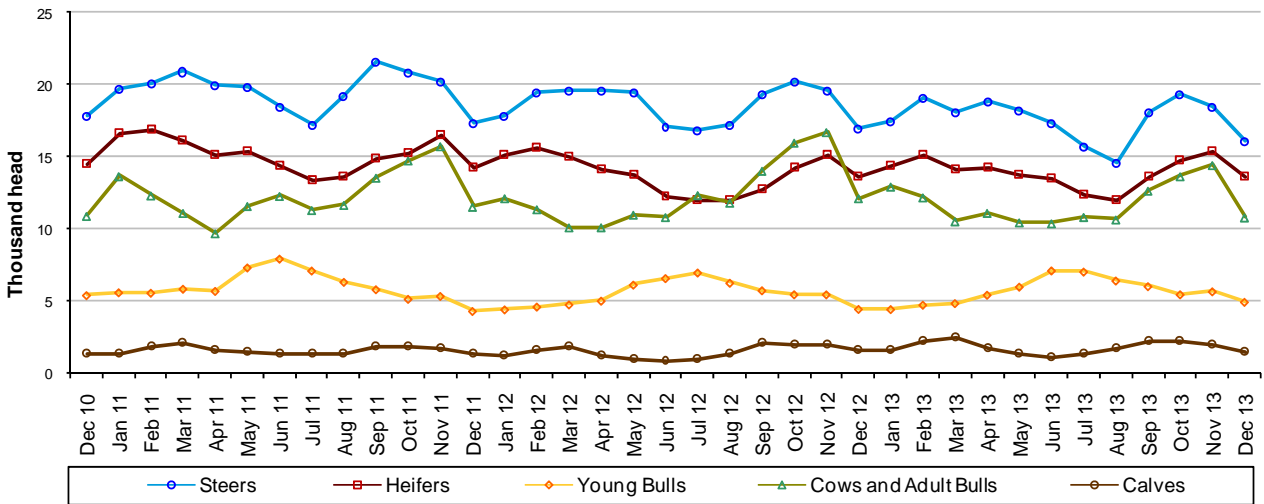
Table 4 shows the average weekly slaughter figures for the last thirteen months. The monthly slaughter figures in section one are affected by the number of weeks in the statistical month. To get a clearer measure of trends weekly averages are calculated by dividing the number of livestock slaughtered each month by the number of weeks in the statistical month.

Longer term trends can be seen in Figures 4:1, 4:2 and 4:3, following this table.

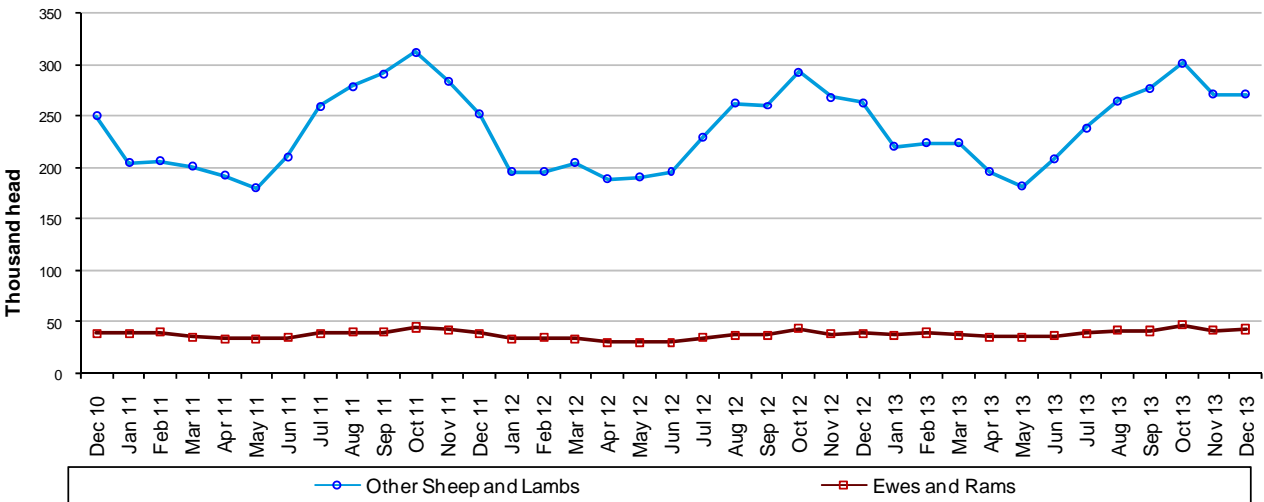
**Table 4: United Kingdom average weekly numbers of livestock slaughtered** thousand head

	2012		2013										
	Dec	Jan	Feb	Mar	Apr	May	Jun	Jul	Aug	Sep	Oct	Nov	Dec
Steers	17	17	19	18	19	18	17	16	15	18	19	18	16
Heifers	14	14	15	14	14	14	13	12	12	14	15	15	14
Young Bulls	4	4	5	5	5	6	7	7	6	6	5	6	5
Cows and Adult Bulls	12	13	12	10	11	10	10	11	11	13	14	14	11
Calves	2	2	2	2	2	1	1	1	2	2	2	2	1
Other Sheep and Lambs	263	220	224	224	196	182	209	239	265	277	301	271	271
Ewes and Rams	39	38	40	37	35	36	37	39	43	42	47	42	43
Clean Pigs	192	189	197	192	189	183	186	193	192	198	202	207	190
Sows and Boars	4	5	5	5	5	5	5	5	5	5	5	5	4

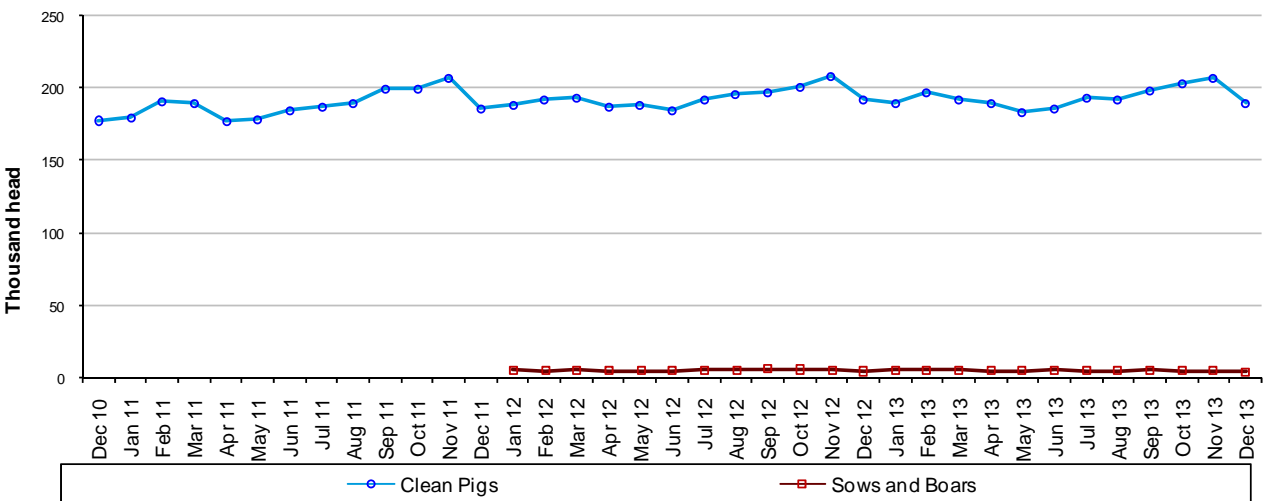
**Figure 4:1 United Kingdom average weekly numbers of cattle slaughtered**



**Figure 4:2 United Kingdom average weekly numbers of sheep slaughtered**



**Figure 4:3 United Kingdom average weekly numbers of pigs slaughtered**



Data for Oct 10 – Dec 11 is confidential

## Section 5: Monthly numbers of home killed livestock slaughtered by country

Table 5 shows monthly estimates of the number of cattle, sheep and pigs slaughtered for meat in England and Wales, Scotland, Great Britain and Northern Ireland. Data are shown in statistical months, rather than calendar months. The totals for the countries may not add up to the Great Britain totals or the United Kingdom totals in section one, due to rounding.

**Table 5: United Kingdom monthly numbers of livestock slaughtered by country**

	October 2013	November 2013	December 2013
	5 weeks	4 weeks	4 weeks
<b>England &amp; Wales</b>			
Steers	59	47	41
Heifers	45	38	31
Young Bulls	18	15	11
Cows and Adult Bulls	49	42	32
Calves	10	7	5
Other Sheep and Lambs	1295	916	932
Ewes and Rams	228	162	167
Clean Pigs	827	675	623
Sows and Boars	24	19	16
<b>Scotland</b>			
Steers	20	15	14
Heifers	17	14	14
Young Bulls	3	2	2
Cows and Adult Bulls	7	6	4
Calves	0	0	0
Other Sheep and Lambs	154	122	120
Ewes and Rams	4	3	3
Clean Pigs	28	25	23
Sows and Boars	0	0	0
<b>Great Britain</b>			
Steers	79	62	54
Heifers	62	52	45
Young Bulls	21	17	13
Cows and Adult Bulls	56	48	36
Calves	10	7	5
Other Sheep and Lambs	1449	1038	1052
Ewes and Rams	232	165	170
Clean Pigs	855	700	646
Sows and Boars	24	19	16
<b>Northern Ireland</b>			
Steers	17	11	10
Heifers	12	10	9
Young Bulls	6	5	6
Cows and Adult Bulls	12	9	7
Calves	1	1	1
Other Sheep and Lambs	57	45	31
Ewes and Rams	4	4	3
Clean Pigs	157	126	112
Sows and Boars	0	0	0

## **Section 6: Methodology, notes and revisions policy**

1. The information in this notice is used by the UK government and the EU as evidence for assessing market conditions and evaluating agricultural policy. The slaughter statistics are also required by the EU under Regulation (EC) No 1165/2008. Other users include the food and farming industry, academia and the general public. Contact details are available on the front page of this notice, for you to send feedback or ask questions about the information provided.
2. Defra runs a monthly survey of registered England and Wales slaughterhouses. It is a statutory survey (approximately 105) that collects information on livestock slaughter numbers and weight of meat produced. All major slaughterhouses participate in the survey and the response rate is typically 100%. These data are supplemented by administrative data for smaller slaughterhouses. Similar surveys are run by RERAD in Scotland and by DARD in Northern Ireland. The England and Wales slaughter survey accounts for around 90% of the E&W slaughterhouse throughput for each livestock type.
3. Information on the weight of meat produced from a sample of animals weighed at slaughterhouses is obtained from survey respondents, around 55 slaughterhouse respondents. From the information provided average dressed carcass weights for each animal type are primarily calculated by adding up the total weight of the meat produced and dividing by the number of animals weighed. Cold dressed carcass weights are recorded.
4. The volume of meat production is estimated from the number of all livestock slaughtered and average dressed carcass weight information collected. This total 'Home killed' production includes livestock imported into the United Kingdom for slaughter.
5. The data are subject to a variety of validation checks which identify inconsistencies in the data. All data are cleaned prior to publication in discussion with the survey respondents.

### **Revisions policy**

6. Figures in this notice are provisional and subject to revision. We will provide information about any revisions we make to previously published information in this statistics notice and the associated datasets. Revisions could occur for various reasons, including:
  - a. if we have not received survey data from respondents we make an estimate based on their previous returns. These estimates will be replaced with actual survey data when it is received.
  - b. survey respondents occasionally supply amended figures for previous periods.
  - c. if we have not received administrative data for the smaller slaughterhouses we make an estimate based on previous data received. These estimates will be replaced with actual data when it is received.
7. **This month no revisions have been made to the data.**