

Information Directorate

National Insurance Number  
Allocations to Adult Overseas  
Nationals Entering the UK

For 2009/10

[http://research.dwp.gov.uk/asd/asd1/niall/index.php?page=nino\\_allocation](http://research.dwp.gov.uk/asd/asd1/niall/index.php?page=nino_allocation)



# Contents

1) Introduction and definitions	Page 2
2) Tabulation Tool	Page 2
3) Headline figures	Page 3
4) Registrations by year and world area	Page 4
5) Quarterly time series analysis	Page 5
6) Age and Gender	Page 6
7) Out-of-work benefits	Page 7
8) Area Analysis	Page 8
Appendix A – Sources	Page 9
Appendix B – Tables	Page 11

- Table 1: NINo registrations to adult overseas nationals entering the UK, by year of registration and world area of origin.
- Table 2: NINo registrations to adult overseas nationals entering the UK, top ten countries by year of registration.
- Table 3: NINo registrations to adult overseas nationals entering the UK, by quarter of registration and world area of origin.
- Table 4: NINo registrations to adult overseas nationals entering the UK, by gender and age, 2009/10.
- Table 5: NINo registrations to adult overseas nationals entering the UK from EU Accession Countries, by quarter of registration and nationality.
- Table 6: NINo registrations to adult overseas nationals entering the UK, by year of registration and Government Office Region.
- Table 7: NINo registrations to adult overseas nationals entering the UK and claiming an out-of-work benefit within 6 months of registration, by year of registration.

## 1. Introduction and definitions

1.1 - This report provides statistics regarding National Insurance Numbers (NINo) allocated to adult overseas nationals entering the United Kingdom (UK). A NINo is generally required by any overseas national looking to work or claim benefits / tax credits in the UK, including the self employed or students working part time.

1.2 - The figures provide a measure of in-migration (inflow) for adult overseas nationals registering for a NINo, however do not reflect emigration (outflow, i.e. migrants who leave the UK) or the overall migrant population (stock).

1.3 - The figures reflect adult overseas nationals allocated a NINo through the adult registration scheme. In addition there will be a small number of overseas nationals (aged 16-19 yrs) allocated a NINo automatically through the Juvenile Registration scheme. This occurs when the individual has previously been allocated a child registration number. These juvenile cases are not captured by the statistics.

1.4 - The registration date referred to in this report represents the date the information on the individual was processed on HM Revenue and Customs' National Insurance Recording and Pay as you Earn System (NPS).

1.5 - For reporting purposes, throughout this document Accession nationals refers to overseas nationals from the 12 Accession countries. These are Cyprus, Czech Republic, Estonia, Hungary, Latvia, Lithuania, Malta, Poland, Slovakia and Slovenia, which joined on the European Union (EU) on 1<sup>st</sup> of May 2004, and Romania and Bulgaria, who have joined on 1<sup>st</sup> January 2007.

### **Tabulation Tool**

2.1 - All tables included in the following report and further information on NINo registrations to adult overseas nationals can be obtained using the Department's internet-based interactive tabulation tool (see web link below). Users are able to specify the variables they are interested in and tabulate accordingly.

[http://research.dwp.gov.uk/asd/asd1/niall/index.php?page=nino\\_allocation](http://research.dwp.gov.uk/asd/asd1/niall/index.php?page=nino_allocation)

### 3. Headline Figures

- The total number of NINo registrations to adult overseas nationals in 2009/10 was 573 thousand, a decrease of 113 thousand (17%) on the previous year. This percentage decrease continues the falling trend since the annual figures peaked in 2007/08 and represents the lowest annual figure since 2004/05. This overall fall in NINo registrations masks some significant variations by world area.
- Asian and Middle Eastern nationals now account for the greatest proportion of registrations according to world area. 33% in the year 2009/10. An increase from 24% in the previous year.

#### Within Europe:

- Registrations to Accession nationals decreased by 29% from 257 thousand in 2008/09 to 183 thousand in 2009/10. Although numbers are falling, Poland continues to form the largest nationality within Europe: 70 thousand NINo registrations were made to Polish citizens in 2009/10 (a 48% decrease from the previous year).
- Registrations to other EU nationals (91 thousand during 2009/10) fell by 29 thousand, a decrease of 24% on the previous year.

#### Outside of Europe:

- Registrations to Non-European nationals decreased by 2% to 285 thousand in the year to 2009/10.
- The only increase by world area in 2009/10 was within registrations to Asian and Middle Eastern nationals, showing an increase to 191 thousand, up 17% on the previous year.
- Registrations to African nationals, those from the Americas and those from Australasia all fell by 24%, 23% and 38% respectively.

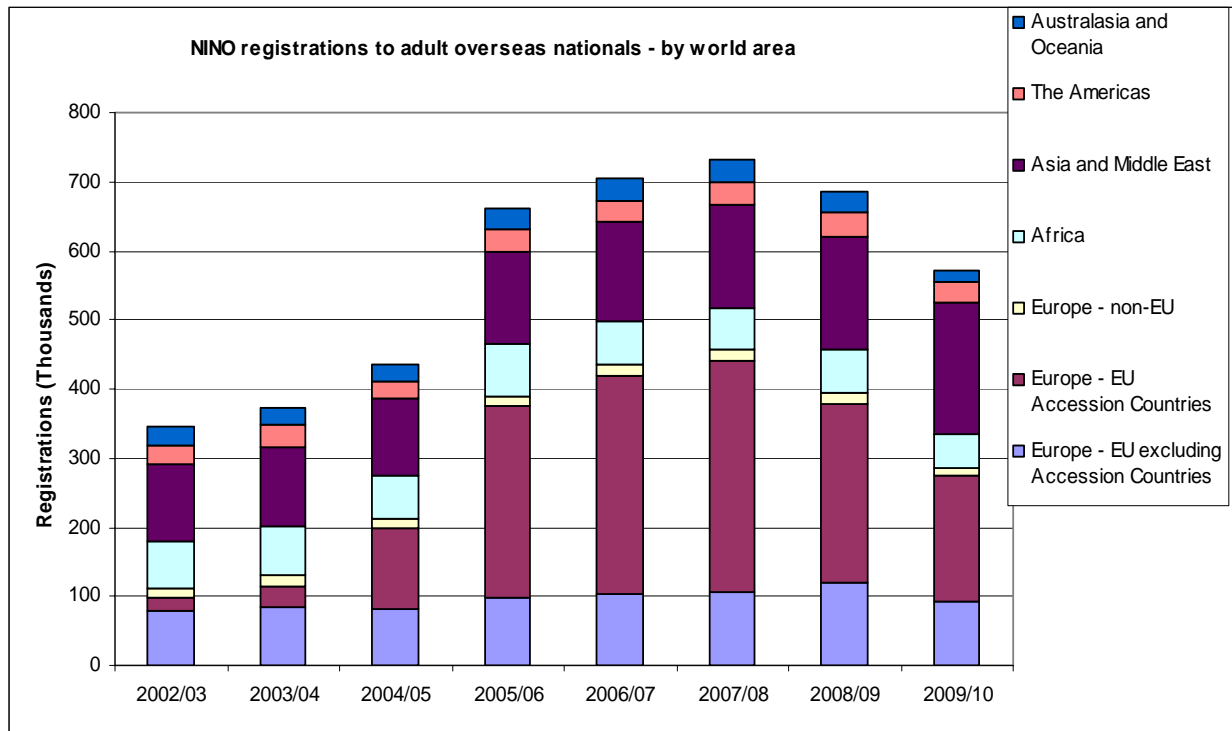
#### Other Key statistics:

- In 2009/10, there were 389 thousand registrations to non Accession nationals, a 9 % decrease from the previous year.
- Registrations from Bulgaria and Romania, who joined the EU on the 1<sup>st</sup> of January 2007, are now showing a decrease after an initial rise in 2007/08. Registrations to Bulgarian and Romanian nationals decreased by 3 thousand and 6 thousand respectively in 2009/10 compared to the previous year.
- Registrations to the Baltic States (Estonia, Latvia and Lithuania) are bucking the decreasing trend seen across the rest of the Accession countries. Registrations to the Baltic States increased by 63% to 48 thousand in the year to 2009/10.
- 91% of Local Authorities have seen the number of NINO registrations to adult overseas nationals fall in 2009/10 from the previous year. Only 3% have seen NINO registrations increase by more than 10% in the year to 2009/10, however for some Local Authorities this only represents a relatively small number of registrations.

- The London Government Office Region accounts for 44% of all registrations in 2009/10, an increase from 40% from the previous year. Northern Ireland and the North East have the fewest registrations with 1% and 2% of the UK total respectively.
- Of the 686 thousand registrations in 2008/09, 26 thousand (3.7%) were claiming an out of work benefit – Jobseekers Allowance (JSA), Employment and Support Allowance (ESA), Incapacity Benefit (IB) or Income Support (IS) – within 6 months of NINo registration. . This is down from 12.5% in 2002/03 and a slight increase on the previous year.

#### 4. Registrations by year and world area.

**Fig 1: NINO registrations to Adult Overseas Nationals, by year of registration and world area.**

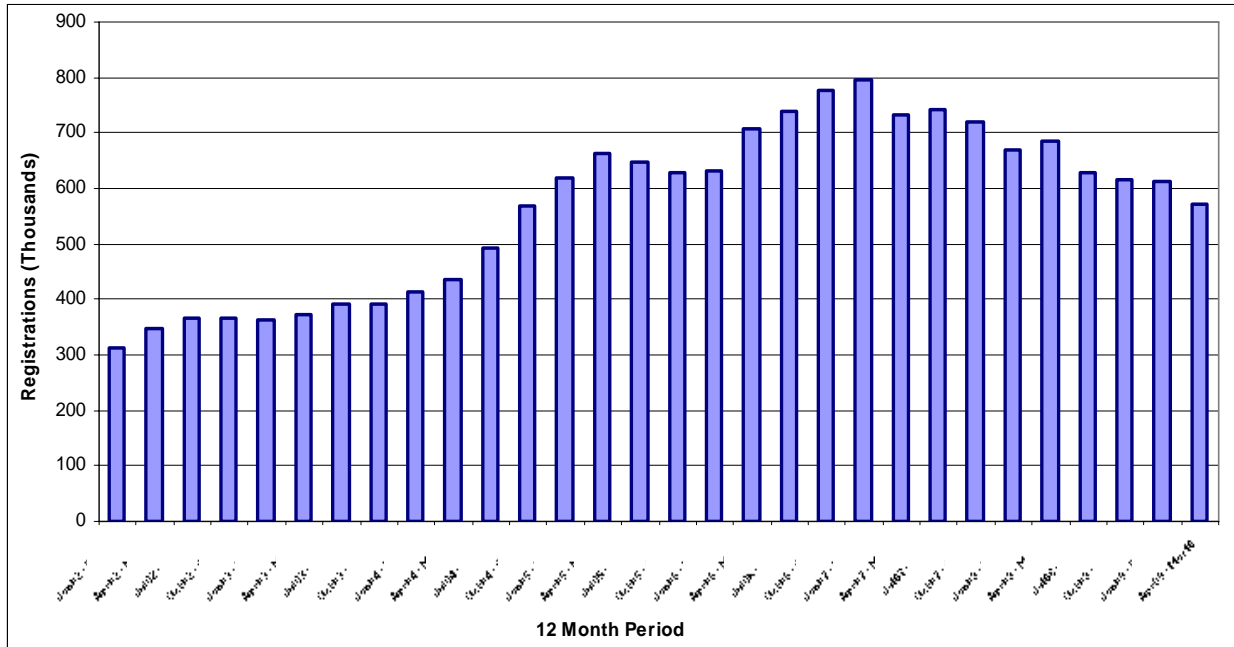


**Source:** 100% extract from NPS

- Registrations to nationals from the EU Accession countries decreased by 74 thousand in the year to 2009/10 while registrations from Asian and Middle Eastern Nationals increased by 28 thousand.
- In previous years, (between the reporting years 2004/05 to 2008/09), Polish nationals have represented the greatest proportion of registrations amongst all nationalities. In the year to 2009/10, registrations to Polish nationals fell by 48% to 70 thousand.
- India is now the biggest contributor - registrations in respect of Indian nationals increased by 27% to 75 thousand in the year to 2009/10.
- Within the EU Accession countries, registrations to the Baltic States of Latvia and Lithuania increased by 13 thousand and 6 thousand respectively. Registrations to A2 nationals have now levelled off and are showing signs of decreasing.
- Registrations to non-EU nationals (all world areas excluding EU and Accession Countries) showed a 3% decline in 2009/10 compared to the previous year.

## 5. Quarterly time series analysis

**Fig 2: NINo registrations to Adult Overseas Nationals, registration time series by quarter (12 month period to the end of the quarter).**



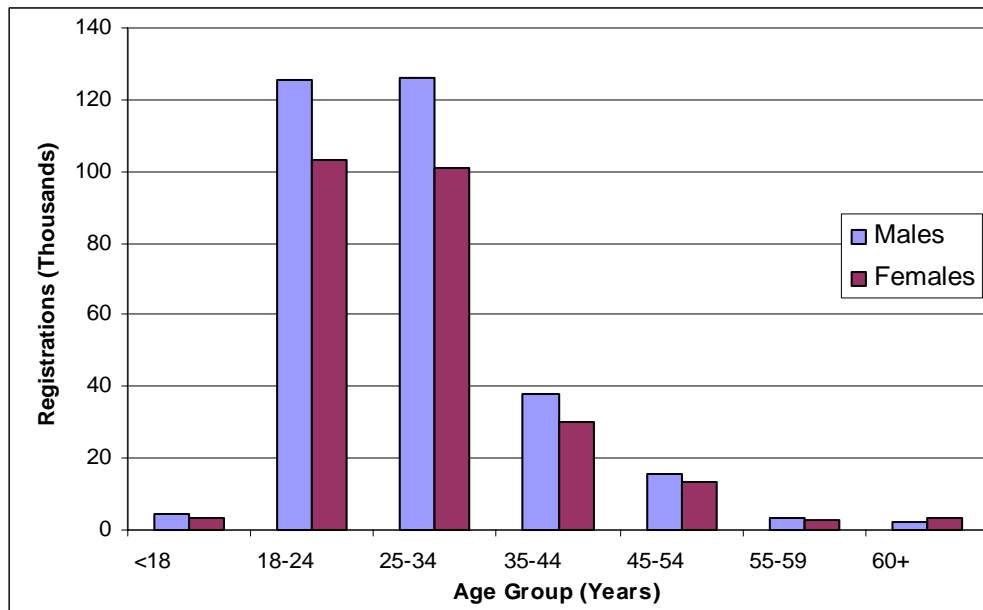
**Source:** 100% extract from NPS

5.1 The 12 month rolling total shows a historically increasing trend from 2002, with the number of registrations peaking in the later half of 2007, levelling out and now falling steadily.

5.2 The raw quarterly time series shows a number of peaks and troughs. The series is reflecting both seasonal effects in the registration of overseas nationals and operational factors in recording a NINo on the NPS computer system. Caution should be taken in interpreting trends based on raw quarterly data, hence a '12 month to date' rolling total is shown above to better reflect trends in the quarterly series.

## 6. Age and Gender

**Fig 3: NINo registrations to Adult Overseas Nationals, by gender and age group – registrations 2009 /2010.**



**Source:** 100% extract from NPS

6.1 The 18-24 and 25-34 age groups account for the vast majority of NINo registrations. In the year 2009/10, 4 out of 5 registrations were made up of 18-34 yr olds.

6.2 55% of NINo registrations to adult overseas nationals are from men. This proportion has increased slightly from 53% on the previous year.



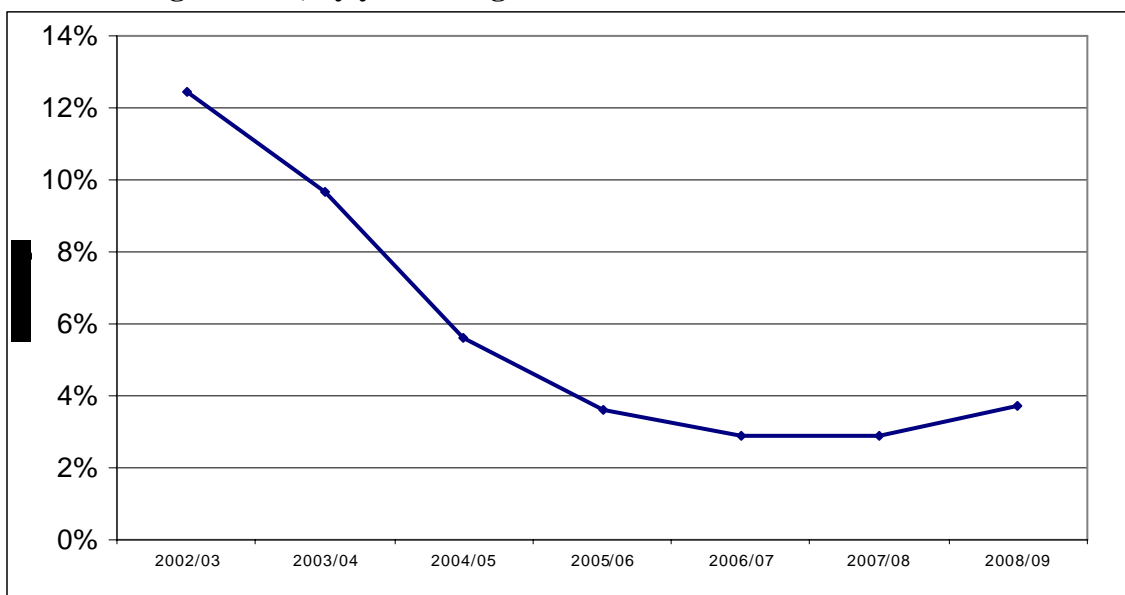
## 7. Out-of-work benefits.

### **Merging NINo allocation data with benefits data**

7.1 DWP produces quarterly National Statistics of benefit claimants in the UK. In particular, key out-of-work benefits data (Jobseekers Allowance, Employment and Support Allowance, Incapacity Benefit, and Income Support) can be merged with National Insurance registration data to show adult overseas nationals receiving out-of-work benefits per year.

7.2 NINo allocation data have been merged with benefits data to show numbers and proportions of adult overseas nationals claiming benefit within 6 months of registering for a NINo.

**Fig 4: Percentage of Adult Overseas Nationals claiming an out-of-work benefit within 6 months of registration, by year of registration.**



**Source:** 100% extract from NPS

*Note - The above chart shows the latest figures where benefits data relating to the 6, month reporting periods are available. Data is not shown for the year 2009/10 as for some claimants the 6 month reporting period has yet to elapse.*

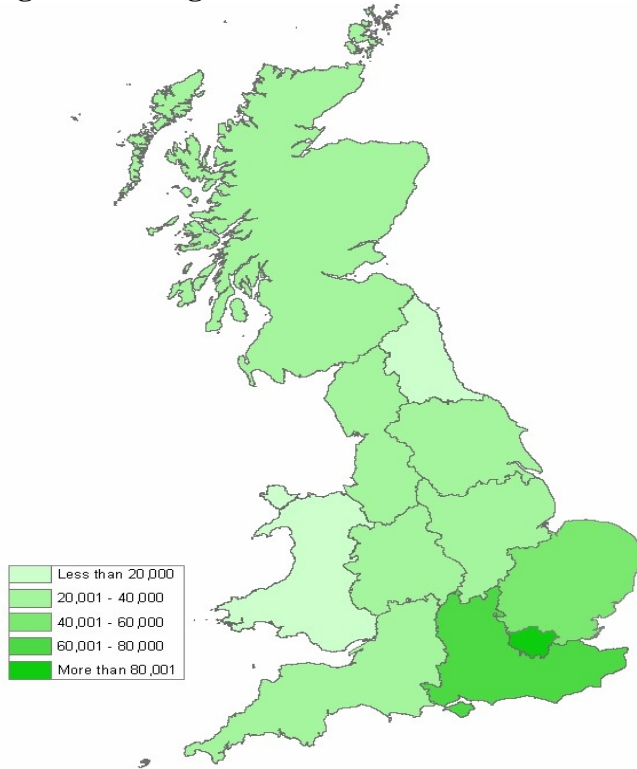
7.3 Of the 686 thousand registrations in 2008/09, 26 thousand (3.7%) were claiming an out-of-work benefit – JSA, ESA, IB or IS – within 6 months of NINo registration. This is down from 12.5% in 2002/03 but an increase from 2.9% in the previous year.

7.4 Of the 26 thousand registrations in 2008/09 claiming benefit within 6 months of registration, 78% claimed JSA, 3% claimed ESA, 6% claimed IB and 13% claimed IS.

## 8. Area Analysis

8.1 Registrations are allocated to Government Office Regions, Local Authorities and Parliamentary Constituencies using address matching software and matching to the latest postcode directory. Figures reflect the best estimate of an adult overseas national's locality at the time of registering for a NINo.

**Fig 5: NINo registrations to Adult Overseas Nationals, by GOR registrations 2009/10.**



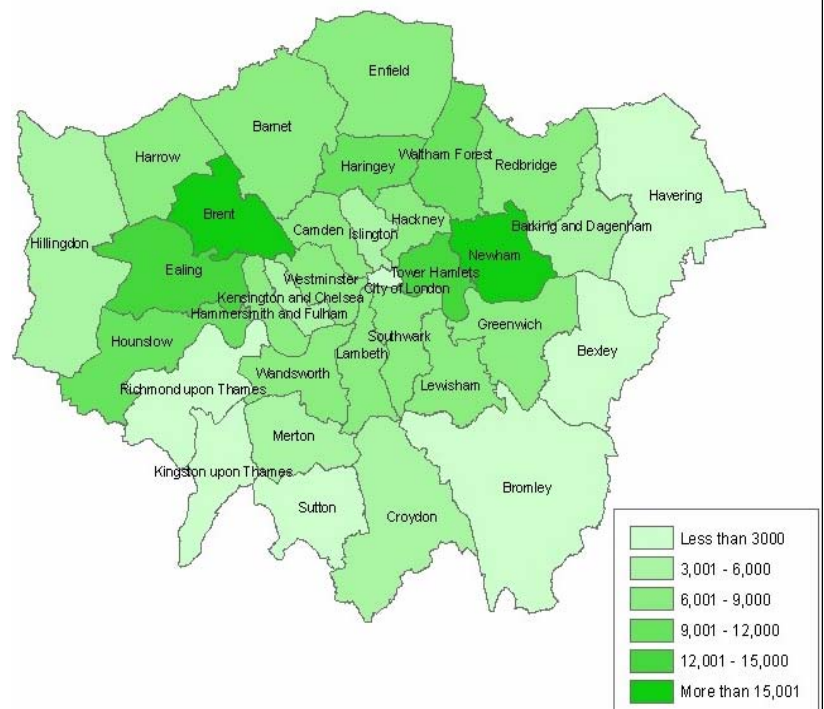
8.2 In 2009/10, of the 573 thousand NINo registrations, 249 thousand (44%) are within London GOR (Government Office Region), a decrease of 26 thousand (10%) from the previous year. Northern Ireland (8 thousand) and the North East (9 thousand) have the fewest registrations with 1% and 2% of the UK total respectively. See appendix B for GOR table.

8.3 Of the top 20 Local Authorities (Fig 6) with the highest number of registrations in 2009/10, 16 are in London GOR. Birmingham and Edinburgh represent the highest LAs outside of London.

**Fig 6: NINo registrations to Adult Overseas Nationals, top 20 LAs 2009/10**

Local Authority	thousands
Newham	28.72
Brent	19.59
Ealing	14.32
Tower Hamlets	13.54
Birmingham	11.66
Hounslow	10.46
Waltham Forest	10.08
Haringey	10.03
Edinburgh, City of	8.99
Manchester	8.91
Westminster	8.67
Southwark	8.59
Barnet	8.57
Lambeth	8.46
Greenwich	8.24
Redbridge	8.21
Wandsworth	7.99
Harrow	7.34
Hammersmith and Fulham	6.80
Glasgow City	6.77

**Fig 7: NINo registrations to Adult Overseas Nationals for LA's within London GOR. – 2009/10**



## 9. Appendix A – Sources

9.1 DWP receive a quarterly cumulative scan from HMRC's National Insurance Recording and Pay as you Earn System (NPS) which contains details of all adult overseas nationals allocated a NINo. This is used to produce these National Statistics.

9.2 The figures encompass adult overseas nationals allocated a NINo for whatever reason, i.e. the figures cover benefit/tax credit recipients as well as workers (including self employed). All adult overseas nationals allocated a NINo are included, regardless of their length of stay in the UK.

9.3 The figures are based on recorded registration date on NPS, i.e. after the NINo application and allocation process has been completed. This may be a number of weeks or months after arriving in the UK. The registration series is not subject to any future change.

9.4 The DWP NINo data does not show when overseas nationals subsequently depart the UK, nor show length of stay in the UK. The DWP figures are therefore a measure of inflow of overseas nationals registering for a NINo. It does not measure outflow or overall stock of overseas nationals in the UK.

9.5 The definition of migrants in this publication – adult overseas nationals allocated a NINo – differs from other published statistics in the area, such as International Migration statistics derived from the International Passenger Survey (IPS), and statistics on foreign workers derived from the Labour Force Survey (LFS). The various definitions of migrants mean the data sources may have different numbers of migrants for the same time period.

### Other statistics on migration

9.6 The Migration Statistics Quarterly Report provides a comprehensive picture of the various sources of migration statistics available and analysis of trends.

<http://www.statistics.gov.uk/statbase/Product.asp?vlnk=15230>

9.7 In the earlier period the ONS arrival figures are *higher* than the DWP NINo series because they are not restricted to arrivals allocated a NINo. For example, they include non-working students, family members, asylum seekers and other visitors not requiring a NINo. This more than outweighs the fact that the ONS international migration series cover just those migrants staying longer than a year. In more recent years, there has been an influx of short term migrants from A8 countries, which has led to the balance going the other way - Worker Registration Scheme statistics indicate that nearly two thirds of applicants give their intended length of stay as less than a year

9.8 The DWP NINo data covers people allocated a NINo for all types of work – including the self-employed and students working part-time – and whatever the length of stay in the UK. It also covers overseas nationals allocated a NINo to claim benefits or tax credits. In addition, the data is a 100% sample held at case-level data sources. In particular, the data can be merged with benefits data to show how many entrants claim key benefits following their NINo registration in the UK.

## 10. Appendix B – Tables

**Table 1. NINo registrations to adult overseas nationals entering the UK, by year of registration and world area of origin**

	2004/05	2005/06	2006/07	2007/08	2008/09	2009/10
						<i>Thousands</i>
<b>All</b>	<b>435.35</b>	<b>663.06</b>	<b>705.84</b>	<b>733.09</b>	<b>686.11</b>	<b>572.74</b>
Europe - EU excluding Accession Countries	80.71	97.84	102.75	107.47	120.14	91.36
Europe - EU Accession Countries	116.84	276.68	317.50	332.44	257.04	182.77
Europe - non-EU	14.04	15.50	16.14	17.21	16.10	12.90
Africa	64.08	74.03	60.72	59.63	63.31	48.14
Asia and Middle East	109.39	134.40	143.79	149.87	163.04	190.57
The Americas	26.52	31.53	31.50	32.64	36.45	28.15
Australasia and Oceania	23.16	32.51	32.98	33.35	29.53	18.34
Others and Unknown	0.61	0.56	0.46	0.49	0.50	0.52

**Definitions and conventions:** "-" Nil or Negligible; Figures are rounded to the nearest ten and displayed in thousands. Some additional disclosure control has been applied. Totals may not sum due to rounding method used.

**NOTE:** Registration date is derived from the date at which a NINo is maintained on the NPS.

**Source:** 100% extract from NPS

**Notes:**

**Time Series - Year Of Registration Date** Years are shown as financial year (1 April - 31 March).

**World Area of Origin** Based on a client's nationality. The mapping for 'world areas' are based on the present day. Bulgaria & Romania are listed as EU Accession States for the entire Back Series. European Union excludes the Accession States.

**Table 2. NINo registrations to adult overseas nationals entering the UK, top ten countries by year of registration**

		<i>Thousands</i>					
		2006/07	2007/08	2008/09	2009/10		
Poland	220.43	Poland	210.66	Poland	134.36	India	75.38
India	48.82	India	49.76	India	59.39	Poland	69.94
Slovak Rep	28.60	Slovak Rep	29.99	Slovak Rep	24.09	Rep of Lithuania	23.42
Pakistan	25.01	Pakistan	24.83	France	24.01	Rep of Latvia	23.20
Australia	24.21	Australia	24.10	Romania	23.95	Pakistan	22.96
Rep of Lithuania	23.92	Romania	22.95	Pakistan	23.46	Bangladesh	21.18
France	20.01	France	21.77	Australia	21.39	Romania	17.68
South Africa	16.80	Rep of Lithuania	19.03	Italy	18.63	France	16.45
Germany	15.07	Germany	15.53	Rep of Lithuania	17.62	Nigeria	16.23
China Peoples Rep	13.00	Italy	15.40	Nigeria	17.46	Nepal	14.59

**Definitions and conventions:** "-" Nil or Negligible; Figures are rounded to the nearest ten and displayed in thousands. Some additional disclosure control has been applied. Totals may not sum due to rounding method used.

**NOTE:** Registration date is derived from the date at which a NINo is maintained on the NPS.

**Source:** 100% extract from NPS

**Notes:**

**Time Series - Year Of Registration Date** Years are shown as financial year (1 April - 31 March)

**Table 3. NINo registrations to adult overseas nationals entering the UK, by quarter of registration and word area of origin**

Thousands

	All	Europe - EU excluding Accession Countries	Europe - EU Accession Countries	Europe - non-EU	Africa	Asia and Middle East	The Americas	Australasia and Oceania	Others and Unknown
Jan 05 - Mar 05	138.46	23.16	48.21	3.65	18.36	30.96	7.49	6.48	0.16
Apr 05 - Jun 05	149.97	23.37	57.56	3.76	18.36	31.16	7.46	8.17	0.12
Jul 05 - Sept 05	171.37	23.45	71.98	3.93	20.65	33.50	8.40	9.33	0.13
Oct 05 - Dec 05	158.76	24.15	66.38	3.78	16.33	33.17	7.67	7.14	0.13
Jan 06 - Mar 06	182.95	26.87	80.77	4.03	18.69	36.56	7.99	7.88	0.17
Apr 06 - Jun 06	133.94	19.77	57.62	3.18	13.50	26.76	6.03	6.91	0.16
Jul 06 - Sept 06	151.49	20.27	70.77	3.20	13.56	28.90	6.83	7.88	0.09
Oct 06 - Dec 06	164.66	25.28	73.36	3.70	12.99	33.46	7.71	8.08	0.09
Jan 07 - Mar 07	255.75	37.43	115.75	6.05	20.66	54.67	10.94	10.12	0.13
Apr 07 - Jun 07	166.13	23.43	75.98	3.98	13.87	33.42	7.37	7.99	0.09
Jul 07 - Sept 07	189.91	24.11	97.27	4.04	14.36	33.29	7.65	9.12	0.08
Oct 07 - Dec 07	185.09	29.44	78.85	4.24	14.80	40.59	8.77	8.27	0.14
Jan 08 - Mar 08	191.96	30.50	80.33	4.95	16.60	42.57	8.84	7.97	0.19
Apr 08 - Jun 08	175.53	27.52	73.16	4.15	15.71	38.23	8.49	8.07	0.21
Jul 08 - Sept 08	167.28	26.38	75.55	3.30	12.99	32.99	8.15	7.83	0.09
Oct 08 - Dec 08	134.80	25.62	42.97	3.27	12.82	36.38	7.92	5.72	0.09
Jan 09 - Mar 09	208.50	40.62	65.34	5.39	21.78	55.44	11.90	7.91	0.12
Apr 09 - Jun 09	117.75	20.59	39.72	3.30	11.95	29.46	7.16	5.48	0.10
Jul 09 - Sept 09	154.49	24.37	63.97	3.46	11.34	37.94	7.57	5.67	0.16
Oct 09 - Dec 09	132.46	20.45	33.78	2.55	11.38	54.97	6.05	3.18	0.09
Jan 10 - Mar 10	168.04	25.95	45.29	3.59	13.46	68.19	7.36	4.01	0.17

**Definitions and conventions:** "-" Nil or Negligible; Figures are rounded to the nearest ten and displayed in thousands. Some additional disclosure control has been applied. Totals may not sum due to rounding method used.

**NOTE:** Registration date is derived from the date at which a NINo is maintained on the NPS.

**Source:** 100% extract from NPS

**Notes:**

**Time Series -** Quarters are calendar quarters (i.e. 1st Jan to 31st March)

**World Area of Origin** Based on a client's nationality. The mapping for 'world areas' are based on the present day. Bulgaria & Romania are listed as EU Accession States for the entire Back Series. European Union excludes the Accession States.

**Table 4. NINo registrations to adult overseas nationals entering the UK, by gender and age, 2009/10**

	Thousands			%	Total	Males	Females
	Total	Males	Females				
All	572.75	315.63	257.11	All		55.1%	44.9%
<18	8.19	4.71	3.48	<18	1.4%	0.8%	0.6%
18-24	228.66	125.69	102.96	18-24	39.9%	21.9%	18.0%
25-34	227.10	126.16	100.94	25-34	39.7%	22.0%	17.6%
35-44	67.67	37.70	29.97	35-44	11.8%	6.6%	5.2%
45-54	29.45	15.80	13.65	45-54	5.1%	2.8%	2.4%
55-59	6.18	3.14	3.04	55-59	1.1%	0.5%	0.5%
60+	5.50	2.43	3.07	60+	1.0%	0.4%	0.5%

**Definitions and conventions:** "-" Nil or Negligible; Figures are rounded to the nearest ten and displayed in thousands. Some additional disclosure control has been applied. Totals may not sum due to rounding method used.

**NOTE:** Registration date is derived from the date at which a NINo is maintained on the NPS.

**Source:** 100% extract from NPS

**Notes:**

**Time Series - Year Of Registration Date** Years are shown as financial year (1 April - 31 March).

**Table 5. NINo registrations to adult overseas nationals entering the UK from EU Accession Countries, by quarter of registration and nationality**

*Thousands*

	Total	Malta	Rep of Estonia	Rep of Latvia	Rep of Lithuania	Bulgaria	Hungary	Poland	Romania	Cyprus	Rep of Slovenia	Czech Rep	Slovak Rep
Jan 05 - Mar 05	48.21	0.14	0.73	2.91	6.21	0.80	1.61	26.68	0.84	0.29	0.22	3.06	4.73
Apr 05 - Jun 05	57.56	0.13	0.75	3.63	7.74	0.89	1.83	32.21	0.70	0.26	0.15	3.17	6.10
Jul 05 - Sept 05	71.98	0.16	0.89	3.76	8.20	0.85	1.99	44.19	0.82	0.23	0.12	3.51	7.27
Oct 05 - Dec 05	66.38	0.17	0.63	3.20	6.95	0.57	2.27	41.66	0.64	0.29	0.09	3.29	6.61
Jan 06 - Mar 06	80.77	0.16	0.76	3.80	8.05	0.52	2.48	53.02	0.72	0.33	0.13	3.28	7.53
Apr 06 - Jun 06	57.62	0.11	0.46	2.58	5.25	0.45	1.87	38.19	0.54	0.21	0.12	2.30	5.53
Jul 06 - Sept 06	70.77	0.13	0.42	2.51	5.44	0.41	2.06	49.70	0.56	0.19	0.10	2.62	6.62
Oct 06 - Dec 06	73.36	0.18	0.52	2.53	5.46	0.56	2.51	51.30	0.61	0.27	0.11	2.76	6.55
Jan 07 - Mar 07	115.75	0.23	0.65	3.41	7.76	1.43	4.30	81.24	2.26	0.39	0.20	3.97	9.91
Apr 07 - Jun 07	75.98	0.12	0.35	2.12	4.84	2.96	2.85	48.05	5.53	0.22	0.10	2.47	6.37
Jul 07 - Sept 07	97.27	0.17	0.35	2.00	5.04	5.05	3.13	63.37	6.27	0.21	0.15	3.14	8.40
Oct 07 - Dec 07	78.85	0.16	0.32	1.79	4.59	2.81	3.59	49.88	5.11	0.33	0.13	2.72	7.41
Jan 08 - Mar 08	80.33	0.14	0.35	1.88	4.55	3.14	3.74	49.37	6.05	0.34	0.16	2.81	7.82
Apr 08 - Jun 08	73.16	0.13	0.36	2.05	4.21	4.42	3.82	40.75	6.73	0.30	0.14	2.53	7.71
Jul 08 - Sept 08	75.55	0.18	0.40	2.09	4.50	5.87	3.90	40.53	6.76	0.25	0.15	3.36	7.57
Oct 08 - Dec 08	42.97	0.14	0.32	1.94	3.24	2.46	3.21	21.67	3.90	0.31	0.10	1.77	3.90
Jan 09 - Mar 09	65.34	0.16	0.61	4.36	5.66	3.24	5.25	31.40	6.56	0.46	0.15	2.56	4.92
Apr 09 - Jun 09	39.72	0.07	0.38	3.94	4.10	2.93	2.72	16.59	4.38	0.17	0.06	1.48	2.90
Jul 09 - Sept 09	63.97	0.14	0.51	6.91	7.04	5.58	3.35	25.83	6.16	0.21	0.09	3.26	4.88
Oct 09 - Dec 09	33.78	0.09	0.45	4.90	4.97	1.79	2.43	12.04	2.97	0.22	0.07	1.41	2.44
Jan 10 - Mar 10	45.29	0.10	0.49	7.44	7.31	2.21	3.04	15.48	4.18	0.25	0.12	1.64	3.02

**Definitions and conventions:** "-" Nil or Negligible; Figures are rounded to the nearest ten and displayed in thousands. Some additional disclosure control has been applied. Totals may not sum due to rounding method used.

**NOTE:** Registration date is derived from the date at which a NINo is maintained on the NPS.

**Source:** 100% extract from NPS

**Notes:**

**Time Series -** Quarters are calendar quarters (i.e. 1st Jan to 31st March)

EU Accession Countries include Romania and Bulgaria which joined the EU on 1st January 2007

**Table 6. NINo registrations to adult overseas nationals entering the UK, by year of registration and Government Office Region**

Government Office Region	Thousands				
	2005/06	2006/07	2007/08	2008/09	2009/10
All	663.06	705.84	733.09	686.11	572.74
North East	10.93	13.33	12.23	11.48	9.31
North West	48.81	51.12	51.18	42.94	34.14
Yorkshire and the Humber	36.50	41.33	42.16	37.77	29.94
East Midlands	38.72	40.72	38.45	32.99	28.27
West Midlands	42.04	47.23	46.63	43.90	36.25
East of England	52.78	52.73	51.79	52.21	42.34
London	235.44	240.93	272.71	275.61	249.23
South East	80.24	79.33	82.83	77.87	61.97
South West	34.06	41.23	38.90	33.11	23.67
Wales	16.64	16.72	16.35	14.48	10.76
Scotland	41.40	51.89	52.41	46.26	36.33
Northern Ireland	16.06	19.68	17.64	12.63	7.53
Overseas Residents	9.43	9.58	9.80	4.85	3.02

**Definitions and conventions:** "-" Nil or Negligible; Figures are rounded to the nearest ten and displayed in thousands. Some additional disclosure control has been applied. Totals may not sum due to rounding method used.

**NOTE:** Registration date is derived from the date at which a NINo is maintained on the NPS

**Source:** 100% extract from NPS

**Notes:**

Overseas Residents - Foreign nationals who have registered for a NINo but reside abroad.

Geographical location is assigned by matching postcodes against the relevant postcode directory

Geographical counts are based on individuals recorded address at the time of scan for that reporting period - the individual may have subsequently moved out of the area or back abroad.

**Time Series - Year Of Registration Date** Years are shown as financial year (1 April - 31 March).

**Table 7. NINo registrations to adult overseas nationals entering the UK and claiming an out-of-work benefit within 6 months of registration, by year of registration**

	Thousands					
	2003/04	2004/05	2005/06	2006/07	2007/08	2008/09
All	36.19	24.40	23.94	20.38	21.16	25.50
JSA	25.77	17.20	18.48	16.29	15.28	19.87
ESA	-	-	-	-	-	0.87
IB/SDA	3.27	2.71	2.37	2.09	2.57	1.53
IS	7.15	4.49	3.09	2.00	3.31	3.23
% on out-of-work benefits	9.7%	5.6%	3.6%	2.9%	2.9%	3.7%

**Definitions and conventions:** "-" Nil or Negligible; Figures are rounded to the nearest ten and displayed in thousands. Some additional disclosure control has been applied. Totals may not sum due to rounding method used.

**NOTE:** Registration date is derived from the date at which a NINo is maintained on the NPS

**Notes:**

**Time Series - Year Of Registration Date** Years are shown as financial year (1 April - 31 March).

The above tables show the latest figures where benefits data relating to the 6 month reporting period are available. Registration year 09/10 is not shown as the figures would be subject to change.

Benefits are arranged hierarchically (JSA, ESA, IB, IS) and claimants are assigned to the topmost benefit which they receive to avoid double counting