



Department for
Business, Energy
& Industrial Strategy



Monthly Statistics of Building Materials and Components

October 2016

No. 500

NOTES

In tables where figures have been rounded to the nearest final digit, there may be an apparent slight discrepancy between the sum of the constituent items and the total as shown.

Symbols

The following standard Government Statistical Service symbols have been used throughout:

Not available	:
Provisional	p
Revised	r
Confidential	c

All figures are subject to revisions. Unless otherwise stated, revisions are due to more complete information from late returns. If any figures are revised by 5% or more from the previously published value, an explanation will be provided.

The United Kingdom Statistics Authority has designated these statistics as National Statistics, in accordance with the Statistics and Registration Service Act 2007 and signifying compliance with the Code of Practice for Official Statistics.

Designation can be broadly interpreted to mean that the statistics:

- meet identified user needs;
- are well explained and readily accessible;
- are produced according to sound methods, and
- are managed impartially and objectively in the public interest.

Unless otherwise stated, the statistics published in this volume have been collected by the Office for National Statistics on behalf of the Department for Business, Energy and Industrial Strategy.

Lead Statistician: Frances Pottier

For enquiries or further information about the contents of this publication please contact:
Construction Market Intelligence, Level 3 Orchard, 1 Victoria Street,
London, SW1H 0ET;
Telephone : 020 7215 1953
E-mail : materialstats@beis.gov.uk.

URN 16/cs3

2th November 2016

CONTENTS

	<u>Page</u>
Preface	I
Table 1 : Construction Material Price Indices	1
Table 2 : Price Indices of Construction Materials – monthly	2 & 3
Table 3 : Price Indices of Construction Materials – annual averages	4
Table 4 : Sales of Sand and Gravel in Great Britain (<i>including seasonally adjusted sales</i>)	5
Table 5 : Sales of Sand and Gravel by English Regions, Wales and Scotland	6 & 7
Table 6 : Sales of Sand and Gravel by English and Welsh Counties and Scottish Regions	8 & 9
Table 7 : Slate : Production, Deliveries and Stocks	10
Table 8 : Cement and Clinker : Production, Deliveries and Stocks	11
Table 9 : Bricks : Production, Deliveries and Stocks for Great Britain (<i>including seasonally adjusted deliveries</i>)	12 & 13
Table 10 : Bricks : Production, Deliveries and Stocks by English Regions, Wales and Scotland (<i>including seasonally adjusted deliveries</i>)	14 to 17
Table 11 : Concrete Building Blocks : Production, Deliveries and Stocks for Great Britain	18 & 19
Table 12 : Concrete Building Blocks : Production, Deliveries and Stocks by English Regions, Wales and Scotland	20 to 25
Table 13 : Concrete Roofing Tiles and Ready-Mixed Concrete (<i>including seasonally adjusted sales of ready-mixed concrete</i>)	26
Table 14 : Value of Overseas Trade in Selected Materials and Components for Constructional Use : Imports (cif) and Exports (fob)	27 to 36
Table 15: Value of EU and Non-EU Trade in Selected Materials and Components for Constructional Use : Imports (cif) and Exports (fob)	37 to 46



500 Editions of Building Materials and Components

This issue marks the 500th publication of building materials and components, a long standing publication that has been through several reincarnations of government departments from the Ministry of Works and Buildings in 1941 to the present day Department of Business, Energy and Industrial Strategy.

The first known edition of building materials and components was confidential and used for internal purposes only. Statistics included number of male employees and firms in the different classifications. This release developed into a serialised published set of tables; parts of which are still being produced today.

Below are a few key statistics from the first release, compared to the equivalent today.

1942 Building Employment Population

In January 1942, 85% of male operatives were working as general builders and civil engineering contractors. The specialised tradesmen e.g. plumbers, joiners and carpenters represented 15% of male operatives employed.

Number and Cost of Employment

742,000 men were employed in Government or construction work. The figure has increased to 1,137,000 employees working in construction this year – plus 289,000 women.¹

The average wage that was paid, hourly, to the craftsmen was 21.7 pence per hour, while a labourer was 16.7 pence an hour. In today's terms this equates to £12.45 and £9.68 per hour², using the labour wage index. The modern day equivalent stratifies by age and the 22 – 29 year old craftsmen can expect to work for £12.05 an hour, while for a labourer the rate is £9.13 per hour³.

Gross Value Added

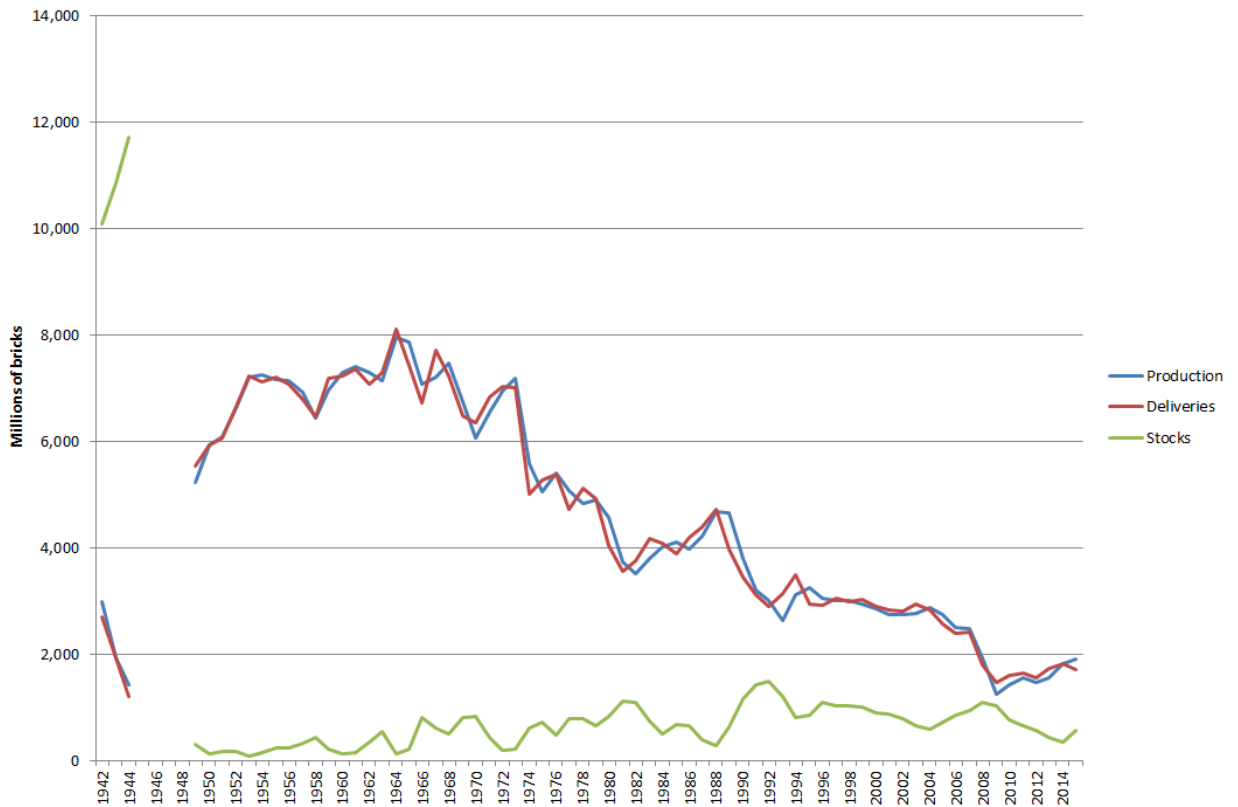
Gross output in 1938 was £449 million, using the GDP deflator in real prices the value is £24,490 million. This is relatively small compared to construction output of £144,769 million at 2015 prices, for all construction⁴.

Production of Bricks and Cement

The time series for the materials production of cement and bricks shows that cement production has increased and bricks decreased. The figures from 1941/1942 compared to the latest figures show a 20% rise in annual cement production and a 71% decrease in brick production.

The stocks of bricks fluctuated in the 1941/1942 cycle, where the end of month stocks differs by 95% between October 1941 and October 1942 total.

Chart A: Stocks, Deliveries & Productions of Bricks, GB⁵
Number of Bricks



¹JOB03 Employee jobs by industry (UK male) in JOB03: Employee jobs by industry. Available at <http://www.ons.gov.uk/employmentandlabourmarket/peopleinwork/employmentandemployeetypes/datasets/employeejobsbyindustryjobs03>

²<https://www.measuringworth.com/ukcompare/>

³Table 20.5a Hourly pay - Gross (£) - For male full-time employee jobs: United Kingdom, 2016 in Age Group by Occupation (2 digit SOC). Available

at <http://www.ons.gov.uk/employmentandlabourmarket/peopleinwork/earningsandworkinghours/datasets/agegroupbyccupation2digitsocashetable20>

⁴Construction Output All Work Summary in Construction Output in Great Britain: Aug 2016. Available at <https://www.ons.gov.uk/businessindustryandtrade/constructionindustry/bulletins/constructionoutputingreatbritain/aug2016>

⁵Data for 1945 – 1948 is unavailable and data pre 1949 refers to output, sales and stocks respectively.

Table 1: Construction Material Price Indices

United Kingdom	2010=100					
	2011	2012	2013	2014	2015	2016
(a) New Housing						
January	102.2	106.0	107.1	108.6	109.8	107.6
February	103.1	106.4	107.6	109.4	109.9	108.2
March	103.7	107.6	107.9	110.0	109.9	108.0
April	104.2	107.9	108.1	110.1	109.9	108.5
May	104.8	107.9	108.5	110.3	110.2	109.0
June	105.7	107.3	108.2	110.1	109.7	109.5
July	106.0	107.3	108.0	110.5	109.4	110.3 p
August	106.6	107.2	108.2	110.4	109.0	111.3 p
September	106.5	107.1	108.1	110.3	108.5	110.6 p
October	106.7	107.2	108.5	110.1	108.2	
November	106.5	107.3	108.5	110.2	108.3	
December	106.2	106.8	108.5	110.0	107.9	
Annual Average	105.2	107.2	108.1	110.0	109.2	
(b) Other New Work						
January	103.5	110.7	112.1	112.4	111.5	106.7
February	105.0	111.1	112.1	113.3	111.2	107.1
March	106.5	112.2	112.8	113.3	111.7	107.7
April	108.2	112.4	112.0	112.7	111.2	107.8
May	109.2	111.8	111.5	113.2	111.1	108.9
June	109.9	111.6	111.8	112.9	110.8	109.4
July	109.8	110.8	111.7	112.5	110.6	110.2 p
August	110.0	110.9	111.6	112.4	109.5	110.7 p
September	109.9	111.5	111.2	112.4	109.0	109.7 p
October	109.8	111.5	112.0	112.4	108.3	
November	109.5	111.1	112.2	112.2	107.5	
December	109.8	111.1	112.3	111.6	107.6	
Annual Average	108.4	111.4	111.9	112.6	110.0	
(c) Repair and Maintenance						
January	102.6	107.2	107.8	109.5	109.5	105.9
February	103.7	107.9	108.4	110.0	109.1	106.1
March	104.4	108.8	108.8	110.6	109.0	106.0
April	105.1	109.2	109.0	110.7	108.8	106.6
May	105.8	109.1	109.3	110.8	109.0	107.2
June	106.6	108.5	109.0	110.5	108.6	107.9
July	107.2	108.2	109.0	110.9	108.3	109.0 p
August	107.9	108.2	109.4	110.7	107.8	109.9 p
September	107.6	108.2	109.4	110.7	107.1	109.4 p
October	107.8	108.2	109.5	110.3	106.9	
November	107.6	108.2	109.4	110.1	106.9	
December	107.5	107.7	109.4	109.9	106.3	
Annual Average	106.2	108.3	109.0	110.4	108.1	
(d) All Work						
January	103.1	109.0	110.0	110.4	110.2	106.1
February	104.4	109.3	110.2	111.3	110.0	106.4
March	105.6	110.4	110.8	111.5	110.3	106.8
April	107.0	110.7	110.2	111.0	109.7	107.0
May	107.7	110.3	110.1	111.3	109.9	108.0
June	108.6	109.9	109.9	111.0	109.5	108.4
July	108.7	109.3	110.1	111.1	109.5	109.3 p
August	109.0	109.6	110.2	110.9	108.7	110.1 p
September	108.9	109.8	109.8	110.8	107.9	109.3 p
October	108.8	109.9	110.3	110.8	107.5	
November	108.6	109.6	110.3	110.6	107.0	
December	108.7	109.3	110.4	110.3	106.8	
Annual Average	107.4	109.8	110.2	110.9	108.9	

Note: These indices are weighted averages of Producer Price Indices. They do not include electrical or mechanical engineering materials.

Source ONS/BEIS

PRICES

Table 2: Price Indices of Construction Materials

United Kingdom

2010=100

		2015				2016		
		Sep	Oct	Nov	Dec	Jan	Feb	Mar
AGGREGATES								
Crushed rock	- including levy	106.1	106.1	106.1	106.1	105.8	105.8	105.8
	- excluding levy	107.9	107.9	107.9	107.9	107.6	107.6	107.6
Sand & gravel	- including levy	120.9	121.0	121.4	120.2	120.2	120.2	120.6
	- excluding levy	124.8	124.7	125.0	123.5	123.4	124.4	125.0
Coated roadstone	- excluding levy	113.2	113.2	113.2	113.2	113.2	113.2	113.2
CEMENT AND CONCRETE								
Cement		119.0	119.0	119.0	119.0	118.5	118.6	118.7
Ready-mixed concrete **		117.8	117.0	117.1	117.4	118.2	119.2	119.3
Pre-cast concrete products		113.6	113.7	113.7	113.7	115.3	115.3	116.1
	of which : Blocks, bricks, tiles & flagstones	116.4	116.5	116.4	116.5	118.8	118.9	119.9
Concrete reinforcing bars (steel)		86.2	81.5	77.2	75.5	74.5	73.5	76.0
CLAY PRODUCTS								
All Bricks		120.3	120.9	121.3	121.0	124.5	123.9	121.8
Ceramic tiles *		103.0	103.0	102.1	101.5	c	c	c
Ceramic sanitaryware		c	c	c	c	138.9	138.9	138.9
TIMBER AND JOINERY								
Imported sawn or planed wood		94.6	94.3	92.7	93.3	93.9	92.8	92.8
Imported plywood		104.9	104.5	101.1	98.2	99.7	98.9	101.0
Sawn wood **		107.8	107.7	107.2	107.7	106.3	104.5	106.7
Particle Board **		137.9	137.1	138.0	138.0	138.0	137.0	136.1
Builders woodwork **		111.3	111.3	111.2	110.8	110.7	110.7	111.6
	of which : Doors & windows **	113.3	113.2	113.2	112.5	113.2	113.3	115.4
METAL PRODUCTS								
Fabricated structural steel		87.4	86.5	85.4	85.4	84.9	83.7	81.6
Doors & windows **		114.6	114.8	114.7	114.6	115.0	115.2	115.4
Screws etc *		102.4	102.4	102.3	102.3	102.3	102.3	102.4
Other builders' ironmongery**		119.1	118.3	118.2	118.2	118.2	118.2	118.4
Central heating boilers *		112.0	112.0	112.0	112.0	c	c	c
Taps and Valves for sanitaryware		c	c	c	c	c	c	c
Metal Sanitaryware*		111.9	111.9	111.9	111.9	112.3	112.3	112.3
PLASTIC PRODUCTS								
Pipes and fittings (rigid) **		113.0	112.2	113.0	112.3	113.0	113.5	114.5
Pipes and fittings (flexible) **		112.3	112.3	109.6	109.6	c	c	c
Sanitaryware **		110.4	110.4	111.0	111.7	112.2	112.2	112.2
Doors & windows **		113.1	113.9	114.2	114.4	114.3	114.3	114.3
OTHER BUILDING MATERIALS								
Asphalt products *		112.4	112.4	112.4	112.4	c	c	c
Insulating materials (thermal or acoustic)		122.8	122.6	122.3	122.0	121.5	121.9	123.0
Paint (aqueous)		113.6	113.6	112.7	113.6	113.6	113.6	113.6
Paint (non-aqueous)		118.1	118.1	117.9	117.9	117.9	117.6	117.3
Lighting equipment for buildings		c	c	c	c	c	c	c
Lighting equipment for roads **		103.4	103.4	103.4	103.4	103.4	103.8	102.9
Electric heating apparatus		c	c	c	c	c	c	c
Electric water heaters *		110.4	110.7	110.6	110.4	110.0	110.0	109.9
Kitchen furniture		111.8	111.8	111.8	111.8	112.3	110.7	111.0

Notes : Most of these indices, which are compiled by the Office for National Statistics, are a selection of producer price indices.

The complete list is available online at www.statistics.gov.uk, by searching for the reference MM22.

* The Office for National Statistics state that these Indices are based on relatively few quotes and in the long term should not be relied upon for contractual purposes.

** These index values are considered less reliable mainly due to lack of market coverage.

Apr	May	Jun	Jul	Aug	Sept	
				p	p	AGGREGATES
105.8	105.8	105.8	106.3	106.1	106.1	Crushed rock - including levy
107.6	107.7	107.7	108.3	108.3	107.9	- excluding levy
120.6	120.4	120.8	120.5	120.4	120.4	Sand & gravel - including levy
125.1	125.5	125.5	124.7	124.8	124.8	- excluding levy
113.2	113.2	113.2	113.2	113.2	113.2	Coated roadstone - excluding levy
						CEMENT AND CONCRETE
118.8	118.7	118.8	118.4	118.7	118.6	Cement
118.9	119.2	118.7	118.5	117.9	117.7	Ready-mixed concrete **
116.4	116.6	117.0	117.3	117.1	117.3	Pre-cast concrete products
120.5	120.8	121.1	121.0	120.9	121.2	of which : Blocks, bricks, tiles & flagstones
81.9	91.2	90.4	89.5 p	91.2	86.9	Concrete reinforcing bars (steel)
						CLAY PRODUCTS
122.0	123.6	122.0	122.3	119.4	119.3	All Bricks
c	c	c	c	c	c	Ceramic tiles *
138.9	139.2	139.2	139.2	139.2	139.2	Ceramic sanitaryware
						TIMBER AND JOINERY
94.4	95.1	95.6	99.4	101.9	100.9	Imported sawn or planed wood
99.4	98.0	98.3	103.4	103.8	103.5	Imported plywood
104.8	104.6	105.4	105.7	105.8	105.9	Sawn wood **
135.4	132.7 r	132.9 r	133.4	133.5	133.5	Particle Board **
111.7	111.9	112.7 r	112.0	112.3	112.3	Builders woodwork **
115.4	116.0	116.3	114.4	114.5	114.3	of which : Doors & windows **
						METAL PRODUCTS
82.3	84.9	87.3	86.7 p	92.1	91.2	Fabricated structural steel
115.5	115.4	115.4	115.3	115.2	114.9	Doors & windows **
102.4	102.5	c	c	c	c	Screws etc *
118.4	118.7	116.5	114.9	114.9	115.0	Other builders' ironmongery**
c	c	c	c	c	c	Central heating boilers *
c	c	c	c	c	c	Taps and Valves for sanitaryware
112.3	111.3	111.3	113.7	114.5	114.5	Metal Sanitaryware*
						PLASTIC PRODUCTS
112.7	113.1	115.1	114.5	114.6	113.6	Pipes and fittings (rigid) **
c	c	110.0	110.0	110.0	110.0	Pipes and fittings (flexible) **
112.2	112.2	113.2	117.0	117.0	117.0	Sanitaryware **
114.4	114.4	114.4	114.3	114.3	114.3	Doors & windows **
						OTHER BUILDING MATERIALS
c	c	c	c	c	c	Asphalt products *
122.9	122.7 r	122.8 r	123.2	124.6	124.5	Insulating materials (thermal or acoustic)
113.6	113.6	113.6	113.6	113.6	110.4	Paint (aqueous)
117.3	117.2	117.0	117.3	116.3	114.6	Paint (non-aqueous)
c	c	c	c	c	c	Lighting equipment for buildings
102.9	102.9	103.9	100.7	98.7	98.7	Lighting equipment for roads **
c	c	99.1	100.1	100.1	100.1	Electric heating apparatus*
110.2	109.7	115.6	115.8	115.4	115.8	Electric water heaters *
111.0	111.2	111.2	111.5	111.8	111.9	Kitchen furniture

Source : ONS

PRICES

Table 3: Price Indices of Construction Materials - Annual Averages

United Kingdom		2010=100				
		2011	2012	2013	2014	2015
AGGREGATES						
Crushed rock	- including levy	105.1	105.3	102.0	103.1	105.9
	- excluding levy	108.4	108.3	105.3	104.7	107.7
Sand & gravel	- including levy	101.7	109.6	115.6	121.6	121.3
	- excluding levy	102.0	111.2	116.3	125.2	125.0
Coated roadstone	- excluding levy	103.3	111.3	111.4	114.5	113.4
CEMENT AND CONCRETE						
Cement		101.6	108.1	109.1	113.9	118.6
Ready-mixed concrete		103.0	106.9	108.7	112.8	117.5
Pre-cast concrete products		102.7	104.0	105.7	108.9	113.1
	of which: Blocks, bricks, tiles & flagstones	103.3	105.6	107.3	111.0	115.5
Concrete re-inforcing bars		116.6	113.2	107.3	103.7	88.3
CLAY PRODUCTS						
All Bricks		100.2	104.7	107.1	115.7	121.9
Ceramic tiles		100.8	c	c	c	101.9
Ceramic sanitaryware		108.9	c	c	c	c
TIMBER AND JOINERY						
Imported sawn or planed wood		101.1	99.2	102.1	105.1	96.8
Imported plywood		104.2	110.1	110.4	105.7	109.0
Sawn Wood		104.7	105.7	107.5	114.9	110.2
Particle Board		113.5	120.2	126.6	135.8	138.2
Builders woodwork		103.4	107.4	107.8	109.9	111.3
	of which: Doors & windows	104.8	111.3	110.2	110.3	112.5
METAL PRODUCTS						
Fabricated structural steel		112.3	109.1	104.1	100.3	89.2
Doors & windows		104.1	110.8	110.5	110.9	113.8
Screws etc		c	c	102.2	102.1	102.3
Other builders' ironmongery		c	105.2	107.1	106.8	112.4
Central heating boilers		103.6	104.7	c	c	110.7
Taps & valves for sanitaryware		106.8	c	c	c	c
Metal sanitaryware		c	111.2	110.7	114.3	113.5
PLASTIC PRODUCTS						
Pipes and fittings (rigid)		104.2	108.1	111.8	115.3	114.8
Pipes and fittings (flexible)		102.8	105.2	c	c	112.0
Sanitaryware		101.2	103.0	104.9	107.6	109.7
Doors & windows		102.5	104.3	106.8	110.9	113.1
OTHER BUILDING MATERIALS						
Asphalt products		c	c	c	c	112.4
Insulating materials (thermal or acoustic)		106.6	114.0	116.7	117.9	120.8
Paint (aqueous)		c	110.5	113.3	113.2	113.6
Paint (non-aqueous)		107.0	114.5	117.0	117.4	117.8
Lighting equipment for buildings		c	c	c	c	c
Lighting equipment for roads		100.0	103.1	103.5	103.2	103.2
Electric water heaters		104.0	107.4	108.9	110.1	110.2
Kitchen furniture		102.8	106.8	106.9	109.8	110.9

Source : ONS

Note: these indices, which are compiled by the Office for National Statistics, are a selection of producer price indices. The complete list is published monthly by the ONS in the Business Monitor MM22.

In July 2014, indices which had been disclosive for 5 years were removed from this table. Please see the 'Pre-announcement of amendments to the monthly statistics of building materials and components publication' document on our website for further details.

MINING AND QUARRYING

Table 4 : Sales of Sand and Gravel in Great Britain

Great Britain		Thousand tonnes						
	Seasonally Adjusted Sand & Gravel Total	Sand		Gravel	Sand & Gravel	Sand, Gravel & Hoggin	Sand & Gravel	of which
		for Building	for Concreting	for Concreting & other uses	for Coating	for Fill	Total	Marine-Dredged
2005	80,513	12,419	30,704	30,648	1,569	5,173	80,513	13,025
2006	77,896	9,499	29,893	31,963	2,346	4,195	77,896	13,974
2007	75,515	8,649	29,803	31,114	1,695	4,254	75,515	13,777
2008	74,651	8,864	28,922	28,297	c	c	74,651	12,582
2009	58,482	7,270	21,582	c	c	c	58,482	9,589
2010	54,530	6,074	19,887	c	c	c	54,530	9,341
2011	57,062	6,041	23,489	c	c	c	57,062	11,169
2012	57,972	6,499	21,994	23,077	c	c	57,972	10,320
2013	52,591	5,722	19,036	18,890	c	c	52,591	10,489
2014	52,430	5,803	19,217	20,356	1,416	5,640	52,430	11,713
2015	52,701 p	5,814	20,529	19,315	1,412	5,650	52,721	11,737
2010 Q3	13,494	1,584	5,268	c	c	c	14,112	2,592
Q4	13,414	1,366	4,684	c	c	c	12,767	2,174
2011 Q1	14,547	1,572	5,665	c	c	c	14,150	2,746
Q2	14,454	1,579	6,127	5,291	c	c	14,831	2,923
Q3	13,981	1,533	6,085	5,160	c	c	14,684	2,937
Q4	14,080	1,357	5,612	4,719	c	c	13,397	2,563
2012 Q1	14,350	1,481	5,635	5,039	c	c	13,894	2,675
Q2	14,070	1,712	5,608	5,633	c	c	14,474	2,609
Q3	14,399	1,778	5,612	6,259	c	c	15,192	2,749
Q4	15,153	1,528	5,139	6,146	c	c	14,412	2,287
2013 Q1	13,482	1,380	4,854	5,107	c	c	12,957	2,260
Q2	13,239	1,570	4,665	4,908	c	c	13,662	2,681
Q3	13,149	1,545	5,007	4,760	322	2,264	13,898	2,914
Q4	12,721	1,227	4,510	4,115	c	c	12,074	2,634
2014 Q1	12,502	1,379	4,221	4,393	394	1,533	11,919	2,447
Q2	13,037	1,472	4,744	5,627	302	1,379	13,524	3,296
Q3	13,559	1,593	5,456	5,511	387	1,388	14,334	3,138
Q4	13,332	1,359	4,796	4,825	333	1,340	12,653	2,832
2015 Q1	13,257	1,352	4,722	4,643	283	1,598	12,599	2,905
Q2	13,757	1,626	5,539	5,170	413	1,617	14,364	3,150
Q3	12,558 p	1,465	5,140	4,841	386	1,464	13,297	3,003
Q4	13,129 p	1,371	5,128	4,661	330	971	12,461	2,679
2016 Q1	13,731 p	1,406	5,213	4,893	349	1,167	13,027	2,593
Q2	14,505 p	1,796	5,775	5,587	600	1,408	15,165	3,116
Q3	14,539 p	1,668	5,958	5,916	446	1,349	15,337	3,254

Note : The figures above are from a quarterly sample inquiry whereas those below are from the Annual Minerals Raised Inquiry, a census. The two inquiries differ because some respondents are only able to provide estimated information for the quarterly inquiry.

From March 2015, seasonally adjusted figures for sales of sand and gravel have been included in this table. In the production of these figures, data back to 1983Q1 have been seasonally adjusted. This long run data series is available on request.

2000	11,758	31,167	31,797	2,461	12,051	89,234	14,356
2001	11,515	31,656	35,135	2,257	7,647	88,210	13,611
2002	11,190	31,224	32,434	2,031	5,842	82,721	12,832
2003	11,851	31,411	30,236	1,766	4,957	80,221	12,131
2004	10,688	32,529	32,346	2,437	8,058	86,057	12,996
2005	11,558	29,848	32,163	2,172	6,651	82,392	13,024
2006	9,907	29,815	31,002	2,648	6,869	80,242	13,974
2007	9,877	30,202	29,350	2,636	6,436	78,501	13,777
2008	8,527	26,885	23,388	2,222	11,106	72,127	12,621
2009	6,296	21,570	19,553	2,270	6,021	55,709	9,592
2010	6,110	20,947	18,540	2,112	6,621	54,330	9,341
2011	6,140	22,591	18,712	1,913	5,659	55,015	11,189
2012	5,474	19,697	18,072	1,817	4,985	50,044	10,291
2013	5,204	20,361	18,175	1,225	6,960	51,925	10,487
2014	5,790	22,335	19,601	1,351	7,052	56,129	11,332

MINING AND QUARRYING

Table 5 : Sales of Sand and Gravel by Standard region, Wales and Scotland

	Thousand tonnes						
	Sand for Building	Sand for Concreting	Gravel for Concreting & other uses	Sand & Gravel for Coating	Sand, Gravel & Hoggin for Fill	Sand & Gravel Total	of which Marine- Dredged
(a) Q3 2016							
North East	39	154	20	24	10	247	81
Yorkshire & the Humber	104	384	342	10	82	922	0
North West	150	292	205	20	148	816	25
West Midlands	172	667	699	22	146	1,706	0
East Midlands	117	784	707	43	48	1,699	0
East of England	272	988	1,012	68	227	2,567	146
South East	472	1,445	1,996	15	241	4,169	2,726
South West	84	491	208	2	145	931	122
Wales	82	186	77	1	58	405	154
Scotland	175	566	650	241	243	1,875	0
Great Britain	1,668	5,958	5,916	446	1,349	15,337	3,254
of which marine-dredged	123	1,408	1,602	0	121	3,254	
(b) Q3 2015							
North East	40	183	7	53	0	283	114
Yorkshire & the Humber	95	423	351	12	92	973	0
North West	224	195	4	14	66	502	32
West Midlands	164	493	639	8	202	1,507	0
East Midlands	105	683	479	53	120	1,440	0
East of England	119	821	764	76	331	2,112	120
South East	413	1,197	1,783	17	330	3,741	2,469
South West	99	481	217	4	173	972	121
Wales	72	238	128	0	10	448	148
Scotland	134	427	468	149	140	1,318	0
Great Britain	1,465	5,140	4,841	386	1,464	13,297	3,003
of which marine-dredged	144	1,347	1,404	4	104	3,003	

Note: Regions refer to Government Office Regions

From May 2014, values for each quarter will no longer be adjusted to ensure that rounded values sum to the total value. Thus, in any given quarter, the sum of all sub-categories of sand and gravel may not exactly match that shown in the total column. Please see the 'Pre-Announcements and Summary of Revisions to Monthly Statistics of Building Materials and Components Publication' document on our website for further details.

MINING AND QUARRYING

Thousand tonnes

	Sand		Gravel	Sand & Gravel	Sand, Gravel & Hoggin	Sand & Gravel	of which
	for Building	for Concreting	for Concreting & other uses	for Coating	for Fill	Total	Marine-Dredged
(c) Annual 2015							
North East	163	790	36	175	2	1,165	507
Yorkshire & the Humber	425	1,524	1,244	43	318	3,554	0
North West	774	767	11	49	260	1,860	82
West Midlands	614	1,974	2,596	95	777	6,056	0
East Midlands	362	2,478	1,939	210	358	5,346	0
East of England	871	3,777	3,328	182	1,026	9,184	414
South East	1,420	4,817	7,072	107	1,759	15,177	9,693
South West	437	1,956	922	103	670	4,086	461
Wales	289	841	497	0	32	1,660	581
Scotland	461	1,604	1,667	450	449	4,630	0
Great Britain	5,814	20,529	19,315	1,412	5,650	52,721	11,737
of which marine-dredged	493	5,262	5,556	15	411	11,737	
(d) Annual 2014							
North East	122	694	1	138	6	963	431
Yorkshire & the Humber	695	1,323	1,183	27	313	3,542	22
North West	733	924	51	53	415	2,174	73
West Midlands	595	2,500	3,000	77	891	7,061	0
East Midlands	370	1,996	2,161	225	422	5,176	0
East of England	591	3,056	3,435	176	1,583	8,841	297
South East	1,060	4,336	7,143	186	777	13,503	9,769
South West	728	1,973	864	117	728	4,409	491
Wales	445	759	731	0	94	2,029	628
Scotland	463	1,656	1,786	415	410	4,732	0
Great Britain	5,803	19,217	20,356	1,416	5,640	52,430	11,713
of which marine-dredged	554	4,649	6,099	45	366	11,713	

Note: Regions refer to Government Office Regions

MINING AND QUARRYING

Table 6 : Sales of Sand and Gravel by English & Welsh County and Scottish Region

Thousand tonnes

	2015			2016		
	Quarter 2	Quarter 3	Quarter 4	Quarter 1	Quarter 2	Quarter 3
NORTH EAST	257	283	283	249	244	247
Northumberland	c	c	c	c	c	c
Tyne and Wear *	0	0	0	0	0	0
Durham	89	106	96	110	112	109
Cleveland *	c	c	c	c	c	c
YORKSHIRE & THE HUMBER	825	973	846	815	938	922
North Yorkshire	420	504	428	421	490	478
West Yorkshire	17	c	18	3	3	4
South Yorkshire	196	228	198	198	228	225
Humberside *	192	c	203	193	216	216
NORTH WEST	449	502	423	369	535	816
Cumbria	98	113	98	105	122	242
Lancashire	c	c	c	57	c	c
Merseyside *	c	32	c	4	c	25
Greater Manchester	28	c	16	c	35	c
Cheshire	281	304	265	c	306	348
WEST MIDLANDS	1,428	1,507	1,624	1,778	1,721	1,706
Shropshire	c	c	176	278	268	266
Staffordshire	951	1,003	1,109	1,108	1,076	1,059
West Midlands	101	109	107	110	c	c
Warwickshire	c	c	c	88	c	c
Hereford & Worcester	c	c	c	194	c	c
EAST MIDLANDS	1,202	1,440	1,150	1,426	1,681	1,699
Derbyshire	188	217	180	c	c	c
Nottinghamshire	c	311	248	304	366	354
Leicestershire	254	c	c	386	446	467
Northamptonshire	c	c	c	c	c	c
Lincolnshire	452	539	423	459	542	546
EAST OF ENGLAND	2,185	2,112	2,377	2,230	2,540	2,567
Cambridgeshire	409	406	c	446	510	503
Norfolk	275	253	306	290	318	331
Suffolk *	c	c	c	c	c	c
Essex *	c	c	c	c	c	c
Bedfordshire	c	233	221	196	232	233
Hertfordshire	278	c	c	c	346	358
SOUTH EAST	3,868	3,741	3,384	3,392	4,125	4,169
Buckinghamshire	124	98	91	59	80	c
Oxfordshire	172	143	131	164	c	c
Berkshire	323	213	200	c	c	c
Greater London *	1,220	1,223	1,113	c	c	1,324
Surrey	206	c	c	316	375	371
Kent *	910	929	823	862	982	1,013
Sussex East *	c	c	c	c	c	c
Sussex West *	200	213	150	186	272	271
Hampshire *	591	594	581	537	673	c
Isle of Wight	c	c	c	c	c	c

Note : Regions refer to Government Office Regions

* Includes marine-dredged.

MINING AND QUARRYING

Thousand tonnes

	2015			2016		
	Quarter 2	Quarter 3	Quarter 4	Quarter 1	Quarter 2	Quarter 3
SOUTH WEST	962	972	911	952	1,045	931
Gloucestershire	c	c	c	c	c	c
Wiltshire	145	157	152	139	174	155
Avon *	c	c	c	c	c	c
Somerset *	c	c	c	c	c	c
Dorset *	c	c	c	c	c	c
Devon *	c	144	134	144	165	150
Cornwall	221	c	199	260	255	213
ENGLAND	11,176	11,530	10,998	11,211	12,829	13,057
WALES	0	0	0	377	0	0
Clwyd	141	165	133	127	125	133
Gwynedd *	0	0	0	c	c	c
Powys	448	448	357	c	377	405
Dyfed *	c	101	75	93	93	96
Glamorgan West *	c	c	c	14	42	47
Glamorgan Mid	20	23	19	0	19	25
Glamorgan South *	c	c	c	45	41	45
Gwent *	c	c	c	49	c	c
SCOTLAND	976	1,318	1,105	1,441	1,959	1,875
South of Scotland	100	135	111	130	c	c
North East Scotland	130	178	141	288	374	370
Highlands	77	c	c	c	c	c
Island Areas	12	c	c	c	15	16
East Central Scotland	80	113	97	120	206	172
West Central Scotland	341	457	396	456	625	603
Tayside and Fife	235	314	262	319	411	407
GREAT BRITAIN	12,599	13,297	12,461	13,027	15,165	15,337

Note : Regions refer to Government Office Regions

* Includes marine-dredged.

MINING AND QUARRYING

Table 7 : Slate - Production, Deliveries and Stocks

Great Britain

Tonnes

	Production			Deliveries			Stocks 1			Deliveries
	Roofing 2	Cladding, decorative & crude blocks	Powder & Granules	Roofing 2	Cladding, decorative & crude blocks	Powder & Granules	Roofing 2	Cladding, decorative & crude blocks	Powder & Granules	Fill & Other Uses
2004	c	c	c	c	c	c	c	c	c	c
2005	c	c	c	c	c	c	2,824	10,281	5,347	c
2006	c	61,612	22,967	c	64,037	22,719	c	6,454	4,274	860,395
2007	c	65,260	19,141	c	62,646	19,431	2,563	2,521	3,746	c
2008	c	59,644	16,915	c	58,129	18,402	c	2,749	2,253	c
2009	c	33,759	9,150	22,555	34,322	10,637	2,420	2,186	766	615,346
2010	c	28,001	c	c	27,355	c	c	3,063	c	582,111
2011	c	30,665	c	c	30,437	c	c	3,245	c	662,003
2012	c	29,634	c	c	28,083	c	c	1,351	c	607,127
2013	c	32,419	c	c	31,375	c	c	c	665	692,319
2014	19,358	30,900	15,467	18,596	31,268	15,393	2,925	1,076	0	620,887
2015	c	29,990	c	c	29,996	c	2,130	605	0	534,879
2008 Q3	c	13,811	3,843	c	13,841	5,511	3,851	2,749	1,816	c
Q4	c	11,760	4,052	c	11,760	3,615	c	2,749	2,253	c
2009 Q1	c	7,370	2,128	5,315	7,688	2,724	c	2,431	1,658	148,722
Q2	5,084	9,124	2,046	5,328	9,319	3,385	4,142	2,236	318	169,661
Q3	5,503	8,263	2,046	6,534	8,267	2,163	3,111	2,232	201	154,862
Q4	4,687	9,002	2,930	5,378	9,048	2,365	2,420	2,186	766	142,101
2010 Q1	c	6,772	c	c	6,662	c	c	2,296	c	88,805
Q2	c	7,517	c	c	7,388	c	2,049	3,284	683	175,098
Q3	c	7,335	c	c	7,184	c	1,326	3,332	281	159,574
Q4	4,907	6,377	c	4,909	6,121	c	c	3,063	c	158,634
2011 Q1	4,736	6,516	3,314	4,449	6,504	3,399	c	3,029	c	198,547
Q2	4,677	8,167	3,370	4,630	8,187	3,094	2,012	3,009	472	216,524
Q3	c	9,851	c	c	9,732	c	c	3,128	c	139,359
Q4	c	6,131	c	c	6,014	c	c	3,245	c	107,573
2012 Q1	c	9,247	c	c	8,829	c	c	2,646	c	131,311
Q2	c	8,216	c	c	9,677	c	c	1,154	c	177,748
Q3	c	6,219	c	c	6,167	c	c	1,206	c	146,152
Q4	c	5,952	c	c	3,410	c	c	1,351	c	151,916
2013 Q1	c	6,052	c	c	9,220	c	c	c	802	157,215
Q2	c	9,638	c	c	9,440	c	c	c	736	216,035
Q3	c	10,429	c	c	6,843	c	c	c	537	169,995
Q4	c	6,300	c	c	5,872	c	c	c	665	149,074
2014 Q1	4,670	5,639	4,036	4,337	5,637	4,209	2,721	1,134	492	159,818
Q2	4,693	7,413	3,946	4,299	7,428	3,657	3,085	1,049	781	179,396
Q3	5,141	8,533	3,837	4,996	8,145	4,054	3,034	988	564	152,155
Q4	4,854	9,315	3,648	4,964	10,058	3,473	2,925	1,076	0	129,518
2015 Q1	c	7,488	c	c	7,564	c	c	833	c	156,704
Q2	3,575	8,461	3,421	4,075	8,443	3,692	2,143	583	0	148,002
Q3	4,115	7,209	3,636	3,940	7,177	3,667	2,318	615	0	130,949
Q4	3,519	6,832	3,380	3,713	6,812	2,921	2,130	605	0	99,224
2016 Q1	4,276	6,533	3,341	4,046	6,541	3,618	2,360	587	0	111,123
Q2	3,538	7,062	3,419	3,865	7,120	3,419	2,033	529	0	168,008
Q3 p	3,655	7,996	3,465	3,786	7,836	3,870	1,902	689	0	167,602

Note : 1) We have improved our sampling panel to include some new sites and have removed some non-pure slate sites. In line with the Code of Practice we have revised the data for Q2, Q3 and Q4 2010.

2) From Q1 1995, the coverage of 'powder & granules' has been extended to include non-quarry manufacture

¹ Refers to stocks at the end of the period.

² Consists of all slate tiles which could be used as roofing tiles.

Table 8 : Cement & Clinker - Production and Deliveries

Great Britain

Thousand tonnes

	Cement						Clinker	
	Production	Exports	Deliveries	Imports (into GB)		Cementitious Material		Production
	<i>of which .</i>	<i>(from GB)</i>	<i>(into GB from GB production)</i>	by 'Manuf.	by Others*	other	total	
2001	11,090	206	10,656	1,182	360	2,063	14,261	10,183
2002	11,089	146	10,762	966	452	2,175	14,355	10,327
2003	11,215	164	11,072	576	646	2,329	14,623	10,146
2004	11,405	141	11,074	609	825	2,443	14,951	10,402
2005	11,216	110	11,004	306	971	2,385	14,666	10,074
2006	11,469	127	11,221	124	1,089	2,648	15,082	10,069
2007	11,887	74	11,638	255	1,121	2,769	15,783	10,227
2008	10,071	61	9,937	283	1,084	2,432	13,660	8,700
2009	7,623	21	7,474	99	1,085	1,680	10,338	6,421
2010	7,883	0	7,767	61	1,153	1,535	10,515	6,598
2011	8,529	0	8,318	86	1,173	1,736	11,312	7,096
2012	7,952	0	7,728	61	1,122	1,605	10,515	6,555
2013	8,203	0	8,204	117	1,322	1,892	11,535	6,712
2014	8,958	3	8,751	227	1,590	1,864	12,433	7,197

1. Arrangements for publication of the cementitious data have been revised following discussion and agreement by the Mineral Products Association (MPA) Cement members. Data are now provided on an annual basis. For quarterly and monthly data up to September 2013, please refer to earlier editions of this publication.

2. Where the coverage is for Great Britain, the figures for imports & exports are defined accordingly and have been estimated. Cementitious material covers cement itself, fly ash to EN 450 Part 1 where used as part of the cement in concrete (previously known as pulverised fuel ash (pfa) to BS 3892 Part 1) and ground granulated blast furnace slag (ggbfs) to EN 15167 Part 1 (previously BS 6699)

* Estimated

BRICKS

Table 9 : Bricks - Production, Deliveries and Stocks

Great Britain

Millions of Bricks

Brick Type	Seasonally Adjusted Deliveries	Production	Deliveries (from)	Stocks*	Production	Deliveries (from)	Stocks*	
	All Types	All Types			Commons			
2011	1646	1554	1646	610	172	185	82	
2012	1551	1459	1551	515	137	166	52	
2013	1736	1555	1736	339	151	169	35	
2014	1812	1824	1812	349	169	173	29	
2015	1701 p	1808	1736	568	166	163	34	
	Q4	461	442	419	349	40	37	29
2015	Q1	433	464	403	415	42	35	36
	Q2	439	511	475	452	41	45	33
	Q3	424 p	510	462	502	41	44	31
	Q4	405 p	430	364	561	38	36	33
2016	Q1	428 p	489	391	624	43	37	39
	Q2	445 p	496	492	628	44	45	38
	Q3	450 p	429	489	568	41	44	34
2014	September	149	163	164	330	15	16	26
	October	151	161	168	323	15	16	25
	November	147	161	138	343	15	12	28
	December	163	120	113	349	10	9	29
2015	January	145	140	117	373	16	10	35
	February	143	151	128	400	14	12	37
	March	144	173	158	415	12	13	36
	April	150	162	158	420	13	14	35
	May	143	175	149	446	12	15	33
	June	146	174	168	452	15	16	33
	July	145	176	169	461	16	17	33
	August	141	163	143	481	11	13	31
	September	138 p	171	151	502	14	14	31
	October	133 p	174	141	529	15	15	30
	November	137 p	151	131	549	14	13	32
	December	135 p	105	92	561	9	9	33
2016	January	141 p	130	109	582	14	10	36
	February	143 p	157	132	607	15	13	38
	March	145 p	167	150	624	15	14	39
	April	148 p	166	163	626	16	15	39
	May	148 p	167	158	635	13	14	38
	June	148 p	163	170	628	16	16	38
	July	146 p	146	159	615	15	15	38
	August	154 p	129	167	577	12	15	35
	September	150 p	154	164	568	14	14	34

* Refers to stocks at end of period

In the March 2015 edition of these tables, entries for clay, sand-lime and concrete bricks were removed. This is because data for these categories of bricks have been confidential since 2009. We will continue to monitor these material types and will reinstate them if they become publishable at a later date.

From March 2015, seasonally adjusted figures for deliveries of bricks have been included in this table. In the production of these figures, brick deliveries data back to January 1983 have been seasonally adjusted. This long run data series is available on request.

Millions of Bricks

Production	Deliveries (from)	Stocks*	Production	Deliveries (from)	Stocks*	(a) Brick Type
Facings			Engineering			
1230	1304	494	152	157	34	2011
1172	1239	425	150	146	38	2012
1244	1384	288	160	183	16	2013
1489	1470	306	167	169	15	2014
1466	1431	466	176	149	68	2015
363	343	306	38	39	15	Q4
372	329	354	50	39	25	2015 Q1
419	383	391	51	47	28	Q2
412	374	430	57	44	41	Q3
347	300	477	45	35	51	Q4
362	323	515	49	30	70	2016 Q1
404	404	516	47	43	74	Q2
353	404	466	35	41	68	
133	132	289	15	17	15	2014 September
132	137	285	14	16	13	October
132	113	301	13	13	14	November
98	94	306	11	10	15	December
107	96	317	18	11	21	2015 January
122	103	340	16	13	23	February
144	130	354	17	15	25	March
132	126	360	16	17	24	April
146	120	386	17	14	27	May
141	136	391	18	16	28	June
141	135	398	19	17	30	July
132	116	414	19	13	37	August
139	123	430	19	14	41	September
145	119	456	15	14	42	October
122	107	471	15	12	45	November
80	75	477	15	9	51	December
100	91	487	16	8	59	2016 January
124	108	502	18	10	67	February
137	124	515	15	12	70	March
132	133	514	18	14	73	April
138	131	521	16	13	76	May
134	139	516	13	15	74	June
117	130	504	13	14	74	July
107	138	474	9	14	69	August
129	136	466	12	13	68	September

* Refers to stocks at end of period

In the March 2015 edition of these tables, entries for clay, sand-lime and concrete bricks were removed. This is because data for these categories were not available. We will continue to monitor these material types and will reinstate them if they become publishable at a later date.

From March 2015, seasonally adjusted figures for deliveries of bricks have been included in this table. In the production of these figures, bricks were also seasonally adjusted. This long run data series is available on request.

BRICKS

Table 10 : Brick Production, Deliveries and Stocks by English region, Wales and Scotland

Thousands

	North East	Yorks & Humber	North West	West Midlands	East Midlands	East of England
(a) Commons				#		#
Production						
2015	c	c	6,457	c	57,897	c
Q4	c	c	1,571	c	14,623	c
2016 Q1	c	c	1,559	c	13,666	c
Q2	c	c	1,929	1,599	15,844	c
Q3	c	c	1,020	c	14,441	c
2016 September	c	116	245	c	4,570	c
Deliveries (from)						
2015	c	c	4,108	c	51,807	c
Q4	c	572	877	1,605	11,048	c
2016 Q1	c	c	897	c	13,846	c
Q2	c	c	1,392	c	16,675	c
Q3	c	c	1,261	1,747	16,914	c
2016 September	c	c	393	540	5,590	c
Stocks *						
2015	c	1,383	3,147	2,805	10,708	c
Q4	c	1,383	3,147	2,805	10,708	c
2016 Q1	c	1,439	3,809	3,813	10,528	c
Q2	c	1,513	4,346	2,878	9,697	c
Q3	c	1,625	4,105	3,645	7,224	c
2016 September	c	1,625	4,105	3,645	7,224	c
(b) Facings						
Production						
2015	c	81,611	159,252	377,336	c	c
Q4	c	17,713	36,067	77,453	c	c
2016 Q1	c	18,061	39,016	78,304	104,504	c
Q2	c	19,542	38,408	101,869	111,392	c
Q3	c	20,550	24,827	c	c	c
2016 September	c	6,757	7,543	32,272	c	c
Deliveries (from)						
2015	c	74,508	118,515	325,126	c	c
Q4	c	14,265	23,613	71,211	c	c
2016 Q1	c	16,484	25,560	72,899	c	c
Q2	c	20,200	32,731	91,790	c	c
Q3	c	20,923	31,145	89,766	c	c
2016 September	c	6,865	10,774	30,173	c	c
Stocks *						
2015	c	22,976	67,719	115,282	c	c
Q4	c	22,976	67,719	115,282	c	c
2016 Q1	c	24,553	81,175	120,687	c	c
Q2	c	23,895	86,852	130,766	c	c
Q3	c	23,522	80,534	127,742	c	c
2016 September	c	23,522	80,534	127,742	c	c
(c) Engineering #						
Production						
2015	c	c	c	112,008	c	c
Q4	c	c	7,280	20,935	0	c
2016 Q1	c	c	4,699	28,067	c	c
Q2	c	c	c	27,086	0	c
Q3	c	c	c	15,423	0	c
2016 September	c	c	c	6,461	c	c
Deliveries (from)						
2015	c	c	c	97,225	c	c
Q4	c	c	3,298	18,953	0	c
2016 Q1	c	c	3,244	15,658	c	c
Q2	c	c	3,748	26,031	0	c
Q3	c	c	4,742	22,537	0	c
2016 September	c	c	1,552	7,805	c	c
Stocks *						
2015	c	c	9,358	23,473	c	c
Q4	c	c	9,358	23,473	c	c
2016 Q1	c	c	10,813	35,882	0	c
Q2	c	c	9,668	36,937	0	c
Q3	c	c	11,197	29,823	0	c
2016 September	c	c	11,197	29,823	0	c

Note : Regions now use Government Office boundaries

* Refers to stocks at end of period.

Engineering bricks : South West are included with West Midlands and East of England are included with South East.

South East	South West	England	Wales	Scotland	Great Britain	
#	#					
c	c	c	c	c	166,914	(a) Commons
c	c	c	c	c	42,191	Production
c	c	c	c	c	43,138	2015
c	c	c	c	c	43,928	Q4
c	c	c	c	c	40,646	2016 Q1
c	c	c	c	c	13,516	Q2
						Q3
						2016 September
						Deliveries (from)
c	c	c	c	c	158,507	2015
c	c	c	c	c	34,340	Q4
c	c	c	c	c	36,934	2016 Q1
c	c	c	c	c	45,212	Q2
c	c	c	c	c	44,408	Q3
c	c	c	c	c	14,236	2016 September
						Stocks *
c	1,099	c	c	c	32,795	2015
c	1,099	c	c	c	32,795	Q4
c	1,261	c	c	c	38,999	2016 Q1
c	1,633	c	c	c	37,715	Q2
c	976	c	c	c	33,962	Q3
c	976	c	c	c	33,962	2016 September
						(b) Facings
						Production
221,656	c	c	c	c	1,548,538	2015
58,190	c	c	c	c	345,173	Q4
c	16,333	c	c	c	361,482	2016 Q1
64,516	16,683	c	c	c	404,232	Q2
50,787	16,980	c	c	c	354,164	Q3
19,194	5,593	c	c	c	128,579	2016 September
						Deliveries (from)
200,093	c	c	c	c	1,380,189	2015
45,480	c	c	c	c	294,901	Q4
50,125	15,248	c	c	c	323,330	2016 Q1
61,295	18,017	c	c	c	403,843	Q2
64,335	17,896	c	c	c	404,278	Q3
22,415	6,179	c	c	c	136,478	2016 September
						Stocks *
67,794	c	c	c	c	477,244	2015
67,794	c	c	c	c	477,244	Q4
71,617	c	c	c	c	515,396	2016 Q1
74,838	c	c	c	c	515,785	Q2
61,290	c	c	c	c	465,671	Q3
61,290	c	c	c	c	465,671	2016 September
						(c) Engineering #
						Production
c	c	c	c	c	200,041	2015
c	c	c	c	0	42,461	Q4
c	c	c	c	c	48,952	2016 Q1
c	c	c	c	0	47,312	Q2
c	c	c	c	0	34,682	Q3
c	c	c	c	c	12,279	2016 September
						Deliveries (from)
c	c	c	c	c	165,963	2015
c	c	c	c	0	35,199	Q4
c	c	c	c	c	30,492	2016 Q1
c	c	c	c	0	42,444	Q2
c	c	c	c	0	40,987	Q3
c	c	c	c	c	13,303	2016 September
						Stocks *
c	c	c	c	c	51,071	2015
c	c	c	c	0	51,071	Q4
c	c	c	c	c	69,531	2016 Q1
c	c	c	c	c	74,399	Q2
c	c	c	c	c	68,094	Q3
c	c	c	c	c	68,094	2016 September

BRICKS

Table 10 (cont'd) : Brick Production, Deliveries and Stocks by English region, Wales and Scotland

Thousands

	North East	Yorks & Humber	North West	West Midlands	East Midlands	East of England
(d) All Bricks						
Production						
2014	c	c	c	c	c	c
2015	c	c	c	c	c	c
2015 Q3	c	c	52,250	134,271	129,268	c
Q4	c	c	44,918	c	c	c
2016 Q1	c	c	45,274	c	118,170	c
Q2	c	c	c	129,632	127,236	c
Q3	c	c	c	c	c	c
2015 September	c	c	17,526	44,217	43,577	c
October	c	c	18,485	42,234	c	c
November	c	c	15,409	34,778	35,976	c
December	c	c	11,024	c	23,808	c
2016 January	c	c	15,560	c	35,747	c
February	c	c	15,276	c	40,421	c
March	c	c	14,438	46,285	42,002	c
April	c	c	c	46,208	41,123	c
May	c	c	c	42,734	42,542	c
June	c	c	13,475	40,690	43,571	c
July	c	c	13,393	c	c	c
August	c	c	9,815	c	34,452	c
September	c	c	c	c	c	c
Deliveries (from)						
2014	c	c	c	c	c	c
2015	c	c	c	c	c	c
2015 Q3	c	c	39,143	c	122,855	c
Q4	c	c	27,788	91,322	c	c
2016 Q1	c	c	29,701	c	c	c
Q2	c	c	37,871	c	c	c
Q3	c	c	37,148	113,658	c	c
2015 September	c	c	13,050	35,780	41,071	c
October	c	c	11,196	36,327	c	c
November	c	c	9,704	30,103	37,797	c
December	c	c	6,888	24,892	c	c
2016 January	c	c	8,792	24,782	c	c
February	c	c	10,010	30,298	38,470	c
March	c	c	10,899	c	c	c
April	c	c	12,201	39,785	47,001	c
May	c	c	11,860	c	45,509	c
June	c	c	13,810	40,714	c	c
July	c	c	11,882	36,840	45,694	c
August	c	c	12,547	38,367	c	c
September	c	c	12,719	38,451	c	c
Stocks *						
2014	c	c	c	72,447	c	c
2015	c	c	80,224	140,926	c	c
2015 Q3	c	c	63,414	130,533	c	c
Q4	c	c	80,224	140,926	c	c
2016 Q1	c	c	95,797	159,663	c	c
Q2	c	c	100,866	169,371	c	c
Q3	c	c	95,836	160,312	c	c
2015 September	c	c	63,414	130,533	c	c
October	c	c	70,703	136,471	c	c
November	c	c	76,088	143,951	c	c
December	c	c	80,224	140,926	c	c
2016 January	c	c	86,992	138,974	c	c
February	c	c	92,258	148,406	c	c
March	c	c	95,797	159,663	c	c
April	c	c	97,082	166,086	c	c
May	c	c	101,201	169,395	c	c
June	c	c	100,866	169,371	c	c
July	c	c	102,377	162,432	c	c
August	c	c	99,645	158,704	c	c
September	c	c	95,836	160,312	c	c

Note : Regions now use Government Office boundaries

* Refers to stocks at end of period.

Thousands

South East	South West	England	Wales	Scotland	Great Britain	
						(d) All Bricks
						Production
c	c	c	c	c	1,822,099	2014
c	c	c	c	c	1,915,493	2015
c	c	c	c	c	510,317	2015 Q3
c	c	c	c	c	429,825	Q4
c	c	c	c	c	453,572	2016 Q1
c	c	c	c	c	495,472	Q2
c	c	c	c	c	429,492	Q3
c	c	c	c	c	171,468	2015 September
c	c	c	c	c	174,097	October
c	c	c	c	c	151,009	November
c	c	c	c	c	104,719	December
c	c	c	c	c	129,843	2016 January
c	c	c	c	c	156,594	February
c	c	c	c	c	167,135	March
c	c	c	c	c	165,524	April
c	c	c	c	c	166,822	May
c	c	c	c	c	163,126	June
c	c	c	c	c	146,221	July
c	c	c	c	c	128,897	August
c	c	c	c	c	154,374	September
						Deliveries (from)
c	c	c	c	c	1,811,588	2014
c	c	c	c	c	1,704,659	2015
c	c	c	c	c	462,271	2015 Q3
c	c	c	c	c	364,440	Q4
c	c	c	c	c	390,756	2016 Q1
c	c	c	c	c	491,499	Q2
c	c	c	c	c	489,673	Q3
c	c	c	c	c	150,823	2015 September
c	c	c	c	c	141,118	October
c	c	c	c	c	131,104	November
c	c	c	c	c	92,218	December
c	c	c	c	c	108,786	2016 January
c	c	c	c	c	131,552	February
c	c	c	c	c	150,418	March
c	c	c	c	c	163,327	April
c	c	c	c	c	158,342	May
c	c	c	c	c	169,830	June
c	c	c	c	c	158,988	July
c	c	c	c	c	166,668	August
c	c	c	c	c	164,017	September
						Stocks *
c	c	c	c	c	349,449	2014
c	c	c	c	c	561,110	2015
c	c	c	c	c	501,892	2015 Q3
c	c	c	c	c	561,110	Q4
c	c	c	c	c	623,926	2016 Q1
c	c	c	c	c	627,899	Q2
c	c	c	c	c	567,727	Q3
c	c	c	c	c	501,892	2015 September
c	c	c	c	c	534,895	October
c	c	c	c	c	548,609	November
c	c	c	c	c	561,110	December
c	c	c	c	c	582,167	2016 January
c	c	c	c	c	607,209	February
c	c	c	c	c	623,926	March
c	c	c	c	c	626,123	April
c	c	c	c	c	634,603	May
c	c	c	c	c	627,899	June
c	c	c	c	c	615,141	July
c	c	c	c	c	577,370	August
c	c	c	c	c	567,727	September

CONCRETE PRODUCTS

Table 11 : Concrete Blocks - Production, Deliveries and Stocks

Great Britain

Thousand square metres

	All Types			Dense			
	Seasonally Adjusted Deliveries	Production	Deliveries (from)	Stocks*	Production	Deliveries (from)	Stocks*
2005	89,551	89,997	89,551	9,680	36,188	36,473	3,465
2006	87,015	87,510	87,015	:	34,956	34,741	:
2007	88,746	89,951	88,746	:	36,686	35,396	:
2008	67,136	67,743	67,136	8,920	29,675	29,889	3,498
2009	50,639	50,394	50,639	8,320	22,607	22,748	3,291
2010	51,758	53,629	51,758	10,152	22,393	21,731	3,833
2011	52,901	54,583	52,901	10,810	22,940	22,101	4,486
2012	52,021	51,693	52,021	10,700	21,551	22,323	3,808
2013	57,995	56,031	57,995	4,171	23,599	24,340	1,894
2014	56,953	57,943	56,953	5,413	25,088	24,943	2,147
2015	64,760 p	64,718	64,920	6,282	25,828	25,474	2,393
2011 Q3	12,922	14,208	14,076	12,352	6,217	5,931	4,862
Q4	13,566	11,632	12,120	10,810	4,864	5,021	4,486
2012 Q1	12,999	13,323	12,642	11,493	5,374	5,426	4,456
Q2	12,523	13,268	13,235	11,595	5,535	5,824	4,209
Q3	12,863	12,584	13,795	10,471	5,360	5,773	3,773
Q4	13,635	12,519	12,349	10,700	5,281	5,300	3,808
2013 Q1	13,702	12,125	12,713	10,165	5,212	5,430	3,643
Q2	15,082	14,960	16,188	4,401	6,351	6,655	2,190
Q3	14,703	15,333	16,042	3,683	6,345	6,609	1,875
Q4	14,508	13,614	13,052	4,171	5,691	5,646	1,894
2014 Q1	13,533	14,021	12,907	5,311	5,918	5,595	2,236
Q2	14,365	14,867	15,095	5,228	6,257	6,627	1,867
Q3	14,554	15,399	16,038	4,610	7,012	7,112	1,784
Q4	14,500	13,656	12,913	5,413	5,902	5,610	2,147
2015 Q1	15,458	15,878	14,520	6,648	6,693	6,285	2,542
Q2	15,474	15,512	16,562	5,433	6,490	6,648	2,243
Q3	16,956 p	17,197	18,615	5,419	6,789	6,816	2,286
Q4	16,872 p	16,130	15,223	6,282	5,857	5,726	2,393
2016 Q1	16,950 p	15,124	15,545	5,974	5,734	5,782	2,409
Q2	17,660 p	18,648	19,273	5,280	6,864	7,126	2,146
Q3	17,069 p	18,985 r	18,780 r	5,499 r	7,558 r	7,503 r	2,211 r
2014 September	4,904	5,384	5,441	4,610	2,357	2,355	1,784
October	4,478	5,040	4,913	:	2,177	2,167	:
November	4,762	4,740	4,239	:	1,993	1,823	:
December	5,260	3,876	3,761	5,413	1,731	1,620	2,147
2015 January	5,153	4,841	4,213	7,099	1,721	1,592	2,217
February	4,993	5,221	4,571	6,566	2,370	2,151	2,504
March	5,312	5,816	5,737	6,648	2,602	2,541	2,542
April	5,162	4,987	5,552	6,401	2,200	2,267	2,469
May	5,149	5,095	5,284	6,190	2,049	2,074	2,427
June	5,163	5,430	5,726	5,433	2,240	2,307	2,243
July	5,560	5,896	6,474	6,204	2,349	2,364	2,240
August	5,826	5,112	5,945	5,350	2,130	2,225	2,148
September	5,571 p	6,189	6,196	5,419	2,310	2,227	2,286
October	5,914 p	6,393	6,252	5,473	2,403	2,358	2,261
November	5,546 p	5,876	5,106	6,300	2,166	2,007	2,476
December	5,412 p	3,860	3,864	6,282	1,288	1,361	2,393
2016 January	6,230 p	4,414	4,904	5,791	1,691	1,638	2,446
February	5,844 p	5,209	5,512	5,552	1,899	1,989	2,388
March	4,876 p	5,501	5,130	5,974	2,143	2,155	2,409
April	5,893 p	5,942	6,483	5,364	2,107	2,313	2,203
May	5,783 p	5,943 r	6,107 r	5,199 r	2,256 r	2,291 r	2,168 r
June	5,984 p	6,762 r	6,682 r	5,280 r	2,500 r	2,522 r	2,146 r
July	5,554 p	5,829 r	6,066 r	5,042 r	2,331 r	2,423 r	2,055 r
August	5,693 p	6,044 r	6,220 r	4,866 r	2,600	2,484 r	2,171 r
September	5,822 p	7,113	6,494	5,499	2,627	2,597	2,211

* Refers to stocks at end of period

From March 2015, seasonally adjusted figures for deliveries of concrete blocks have been included in this table. In the production of these figures, blocks deliveries data back to January 1983 have been seasonally adjusted. This long run data series is available on request.

CONCRETE PRODUCTS

Thousand square metres

Lightweight			Aerated			
Production	Deliveries (from)	Stocks*	Production	Deliveries (from)	Stocks*	
25,561	25,673	2,173	28,248	27,405	4,042	2005
25,345	25,222	:	27,209	27,051	:	2006
25,965	25,667	:	27,300	27,682	:	2007
18,168	18,363	2,149	19,900	18,884	3,273	2008
13,421	13,989	1,522	14,367	13,903	3,507	2009
14,415	13,923	2,044	16,822	16,104	4,276	2010
15,153	14,821	1,728	16,490	15,978	4,596	2011
14,383	14,103	2,024	15,759	15,595	4,868	2012
17,055	17,508	1,208	15,377	16,147	1,069	2013
17,499	17,447	1,402	15,356	14,563	1,864	2014
19,036	18,727	1,712	19,853	20,719	2,177	2015
3,908	3,970	2,218	4,083	4,175	5,272	2011 Q3
3,321	3,359	1,728	3,447	3,739	4,596	Q4
3,559	3,314	1,964	4,389	3,903	5,074	2012 Q1
3,487	3,437	2,006	4,245	3,973	5,380	Q2
3,756	3,887	1,904	3,467	4,135	4,794	Q3
3,580	3,465	2,024	3,658	3,584	4,868	Q4
3,094	3,389	1,730	3,818	3,893	4,793	2013 Q1
4,691	4,809	1,303	3,918	4,723	908	Q2
5,079	5,162	1,210	3,909	4,271	597	Q3
4,191	4,147	1,208	3,732	3,259	1,069	Q4
4,164	4,058	1,320	3,939	3,254	1,755	2014 Q1
4,503	4,710	1,256	4,107	3,758	2,104	Q2
4,854	4,794	1,322	3,533	4,133	1,504	Q3
3,977	3,885	1,402	3,777	3,418	1,864	Q4
4,517	4,334	1,624	4,668	3,902	2,483	2015 Q1
5,343	5,486	1,456	3,679	4,428	1,734	Q2
4,894	4,859	1,499	5,514	6,940	1,635	Q3
4,282	4,047	1,712	5,991	5,449	2,177	Q4
4,434	4,332	1,864	4,956	5,431	1,702	2016 Q1
5,164	5,594	1,364	6,620	6,552	1,770	Q2
5,686 r	5,592 r	1,462 r	5,742	5,686	1,826	Q3
1,605	1,604	1,322	1,422	1,481	1,504	2014 September
1,540	1,555	:	1,323	1,191	:	October
1,392	1,316	:	1,354	1,101	:	November
1,045	1,015	1,402	1,100	1,126	1,864	December
1,296	1,190	1,519	1,824	1,431	3,363	2015 January
1,500	1,382	1,638	1,351	1,038	2,423	February
1,721	1,762	1,624	1,493	1,434	2,483	March
1,780	1,945	1,783	1,007	1,340	2,149	April
1,887	1,794	1,871	1,158	1,415	1,892	May
1,676	1,747	1,456	1,514	1,672	1,734	June
1,918	1,782	1,603	1,628	2,328	2,361	July
1,432	1,463	1,549	1,551	2,257	1,654	August
1,544	1,614	1,499	2,335	2,355	1,635	September
1,653	1,627	1,508	2,337	2,268	1,704	October
1,464	1,448	1,525	2,247	1,651	2,299	November
1,164	973	1,712	1,408	1,530	2,177	December
1,272	1,279	1,705	1,451	1,987	1,641	2016 January
1,575	1,505	1,806	1,735	2,018	1,358	February
1,588	1,548	1,864	1,770	1,426	1,702	March
1,765	1,739	1,820	2,070	2,431	1,341	April
1,636 r	1,832 r	1,624 r	2,051	1,985	1,407	May
1,764 r	2,023 r	1,364 r	2,498	2,136	1,770	June
1,843 r	1,830 r	1,377 r	1,654	1,814	1,610	July
1,760 r	1,870 r	1,268 r	1,684	1,867	1,427	August
2,083	1,892	1,462	2,404	2,005	1,826	September

Data from December 2011 to June 2012 has been revised following receipt of corrected data. The period August 2007 to November 2011 may also be affected, but non-availability of a back-series of corrected data means that this period cannot be revised, and should be treated with caution. Full details are available in the 'Summary of revision to monthly statistics of building materials and components publication' document on our website.

CONCRETE PRODUCTS

Table 12 : Concrete Blocks : Production, Deliveries and Stocks by English Region, Wales

	North East	Yorks & Humber	North West	West Midlands	East Midlands	East of England
(a) Dense aggregate						
Monthly						
Production						
2015 Oct	30	136	198	c	131	c
Nov	35	133	233	c	108	c
Dec	34	76	90	c	86	c
Jan	27	85	190	c	79	c
2016 Feb	27	65	188	c	125	c
Mar	26	125	187	c	141	c
Apr	22	159	180	c	109	c
May	27	140	207	c	82	c
June	43	152	248	c	129	c
July	24	146	235	c	119	c
Aug	26	178	236	c	129	c
Sep	c	171	250	c	143	c
Deliveries (from)						
2015 Oct	28	131	209	c	110	c
Nov	31	111	167	c	108	c
Dec	18	73	127	c	102	c
Jan	26	79	152	c	97	c
2016 Feb	40	93	183	c	108	c
Mar	c	121	197	c	126	c
Apr	32	134	215	c	143	c
May	33	146	229	c	118	c
June	27	163	246	c	128	c
July	30	166	234	c	126	c
Aug	23	173	242	c	134	c
Sep	37	160	263	c	132	c
Stocks *						
2015 Oct	85	115	208	121	182	c
Nov	89	136	274	124	182	c
Dec	105	139	202	146	166	c
Jan	107	145	240	166	149	c
2016 Feb	94	116	246	137	166	c
Mar	103	120	230	102	181	c
Apr	94	145	195	85	147	c
May	88	139	172	96	111	c
June	104	128	175	c	111	c
July	98	108	175	c	105	c
Aug	100	112	170	c	99	c
Sep	95	123	165	c	111	c
Quarterly						
Production						
2015 Q2	c	398	521	c	350	c
Q3	c	380	671	c	373	c
Q4	98	345	521	c	326	c
2016 Q1	80	274	565	c	345	c
Q2	92	451	635	c	320	c
Q3	c	494	721	c	392	c
Deliveries (from)						
2015 Q2	81	460	590	c	380	c
Q3	102	405	708	c	347	c
Q4	77	316	502	c	320	c
2016 Q1	65	294	532	c	330	c
Q2	91	443	690	c	390	c
Q3	90	499	738	c	392	c
Annual						
Production						
2013	c	c	2,239	c	c	c
2014	369	c	2,441	c	c	c
2015	c	1,506	2,294	c	1,413	c
Deliveries (from)						
2013	c	c	2,415	c	c	c
2014	c	c	2,346	c	c	c
2015	347	1,548	2,269	c	1,358	c
Stocks *						
2013	c	157	119	c	128	c
2014	95	166	214	c	112	c
2015	105	139	202	146	r 166	c

Note: Regions refer to Government Office Regions

* Refers to stocks at end of period.

CONCRETE PRODUC

and Scotland

Thousand square metres

South East	South West	England	Wales	Scotland	Great Britain	
						(a) Dense aggregate
						Monthly
						Production
158	567	1,764	445	194	2,403	2015 Oct
161	483	1,608	340	218	2,166	Nov
105	264	958	207	122	1,288	Dec
113	424	1,334	270	88	1,691	Jan
177	477	1,490	274	135	1,899	2016 Feb
157	487	1,605	352	186	2,143	Mar
151	495	1,602	357	148	2,107	Apr
156	595	1,715	361	181	2,256	May
161	602	1,936	412	152	2,500	June
181	533	1,822	407	102	2,331	July
214	577	1,969	449	182	2,600	Aug
191	588	2,022	463	141	2,627	Sep
						Deliveries (from)
174	532	1,699	447	211	2,358	2015 Oct
151	452	1,496	326	186	2,007	Nov
110	308	1,046	216	100	1,361	Dec
115	416	1,284	230	124	1,638	Jan
149	479	1,508	334	147	1,989	2016 Feb
156	511	1,635	348	173	2,155	Mar
165	561	1,774	386	153	2,313	Apr
161	575	1,783	341	168	2,291	May
178	612	1,953	412	158	2,522	June
182	581	1,892	381	150	2,423	July
185	548	1,907	423	153	2,484	Aug
177	599	2,016	411	169	2,597	Sep
						Stocks *
110	581	1,787	213	261	2,261	2015 Oct
121	612	1,894	227	355	2,476	Nov
116	567	1,770	230	393	2,393	Dec
114	575	1,820	269	356	2,446	Jan
142	572	1,802	201	385	2,388	2016 Feb
143	548	1,767	243	398	2,409	Mar
128	482	1,595	215	393	2,203	Apr
123	503	1,527	235	406	2,168	May
107	493	1,511	235	400	2,146	June
106	445	1,440	261	353	2,055	July
135	474	1,502	287	382	2,171	Aug
149	462	1,515	341	354	2,211	Sep
						Quarterly
						Production
434	1,719	5,073	918	499	6,490	2015 Q2
497	1,567	5,180	1,097	512	6,789	Q3
424	1,314	4,331	991	535	5,857	Q4
447	1,388	4,429	896	409	5,734	2016 Q1
468	1,692	5,253	1,130	480	6,864	Q2
587	1,698	5,813	1,319	426	7,558	Q3
						Deliveries (from)
490	1,618	5,173	964	511	6,648	2015 Q2
475	1,659	5,250	1,080	486	6,816	Q3
435	1,292	4,241	989	497	5,726	Q4
420	1,407	4,427	912	444	5,782	2016 Q1
504	1,747	5,510	1,138	478	7,126	Q2
544	1,728	5,816	1,216	472	7,503	Q3
						Annual
						Production
c	c	c	3,459	c	23,499	2013
c	c	c	3,369	c	25,082	2014
1,827	6,804	19,882	3,879	2,067	25,828	2015
						Deliveries (from)
c	c	c	3,534	c	24,240	2013
c	c	c	3,330	c	24,960	2014
1,825	6,611	19,632	3,856	1,986	25,474	2015
						Stocks *
132	c	c	198	c	1,894	2013
c	c	c	238	c	2,147	2014
116	567	1,770	230	393	2,393	2015

In August 2016, a review of the concrete blocks data published since January 2015 identified errors in the published figures. These have been revised in this edition of the publication.

Table 12 : Concrete Blocks : Production, Deliveries and Stocks by English Region, Wales

	North East	Yorks & Humber	North West	West Midlands	East Midlands	East of England
(b) Other (1)						
Monthly						
Production						
2015 Oct	c	c	233	c	c	c
Nov	c	c	183	c	c	c
Dec	c	c	183	c	c	c
Jan	c	c	164	c	c	c
2016 Feb	c	c	237	c	c	c
Mar	c	c	249	c	c	c
Apr	c	c	231	c	c	c
May	c	c	239	c	c	c
June	c	c	231	c	c	c
July	c	c	285	c	c	c
Aug	c	c	197	c	c	c
Sep	c	c	268	c	c	c
Deliveries (from)						
2015 Oct	c	c	217	c	c	c
Nov	c	c	186	c	c	c
Dec	c	c	130	c	c	c
Jan	c	c	183	c	c	c
2016 Feb	c	c	201	c	c	c
Mar	c	c	235	c	c	c
Apr	c	c	246	c	c	c
May	c	c	280	c	c	c
June	c	c	289	c	c	c
July	c	c	245	c	c	c
Aug	c	c	240	c	c	c
Sep	c	c	263	c	c	c
Stocks *						
2015 Oct	886	744	148	c	349	c
Nov	1,383	826	145	c	371	c
Dec	1,367	900	189	c	360	c
Jan	834	900	170	c	343	c
2016 Feb	685	812	216	c	405	c
Mar	1,165	772	249	c	284	c
Apr	778	717	233	c	288	c
May	c	636	193	c	294	c
June	c	635	135	c	262	c
July	c	599	176	c	278	c
Aug	c	557	133	c	248	c
Sep	1,278	652	142	c	252	c
Quarterly						
Production						
2015 Q2	c	c	c	c	c	c
Q3	c	c	422	c	c	c
Q4	c	c	599	c	c	c
2016 Q1	c	c	650	c	c	c
Q2	c	c	701	c	c	c
Q3	c	c	751	c	c	c
Deliveries (from)						
2015 Q2	c	c	598	c	c	c
Q3	c	c	421	c	c	c
Q4	c	c	532	c	c	c
2016 Q1	c	c	618	c	c	c
Q2	c	c	815	c	c	c
Q3	c	c	748	c	c	c
Annual						
Production						
2013	c	c	2,199	c	c	c
2014	1,632	c	2,656	c	c	c
2015	c	c	c	c	c	c
Deliveries (from)						
2013	c	c	2,275	c	c	c
2014	c	c	2,613	c	c	c
2015	c	c	2,130	c	c	c
Stocks *						
2013	c	552	97	c	381	c
2014	146	1,119	140	c	371	c
2015	1,367	900	189	c	360	c

(1) Lightweight aggregate including aerated concrete blocks where appropriate.

* Refers to stocks at end of period.

Note: Regions refer to Government Office Regions

and Scotland

Thousand square metres

South East	South West	England	Wales	Scotland	Great Britain	
						(b) Other (1)
						Monthly
						Production
c	c	c	50	c	3,990	2015 Oct
c	c	c	40	c	3,711	Nov
c	c	c	36	c	2,572	Dec
c	c	c	26	c	2,723	Jan
c	c	c	46	c	3,310	2016 Feb
c	c	c	39	c	3,358	Mar
c	c	c	45	c	3,835	Apr
c	c	c	55	c	3,687	May
c	c	c	48	c	4,262	June
c	c	c	80	c	3,497	July
c	c	c	46	c	3,444	Aug
c	c	c	78	c	4,486	Sep
						Deliveries (from)
c	c	c	53	c	3,895	2015 Oct
c	c	c	45	c	3,099	Nov
c	c	c	29	c	2,503	Dec
c	c	c	34	c	3,266	Jan
c	c	c	42	c	3,522	2016 Feb
c	c	c	38	c	2,974	Mar
c	c	c	39	c	4,171	Apr
c	c	c	59	c	3,816	May
c	c	c	57	c	4,160	June
c	c	c	60	c	3,644	July
c	c	c	51	c	3,736	Aug
c	c	c	64	c	3,897	Sep
						Stocks *
277	c	c	98	c	3,212	2015 Oct
247	c	c	93	c	3,824	Nov
219	c	c	108	c	3,889	Dec
310	c	c	100	c	3,346	Jan
316	134	c	114	c	3,164	2016 Feb
372	c	c	115	c	3,566	Mar
421	c	c	121	c	3,161	Apr
371	c	c	117	c	3,031	May
341	c	c	108	c	3,134	June
388	c	c	128	c	2,987	July
328	c	c	124	c	2,695	Aug
349	c	c	138	c	3,288	Sep
						Quarterly
						Production
c	c	c	147	c	9,022	2015 Q2
c	c	c	150	c	10,408	Q3
c	c	c	126	c	10,273	Q4
c	c	c	111	c	9,390	2016 Q1
c	c	c	148	c	11,784	Q2
c	c	c	205	c	11,428	Q3
						Deliveries (from)
c	c	c	137	c	9,914	2015 Q2
c	c	c	155	c	11,799	Q3
c	c	c	127	c	9,497	Q4
c	c	c	114	c	9,763	2016 Q1
c	c	c	155	c	12,147	Q2
c	c	c	174	c	11,277	Q3
						Annual
						Production
c	c	c	1,704	c	32,432	2013
c	c	c	985	c	32,817	2014
c	c	c	580	c	38,889	2015
						Deliveries (from)
c	c	c	1,767	c	33,654	2013
c	c	c	978	c	31,847	2014
c	c	c	578	c	39,446	2015
						Stocks *
381	c	c	79	c	2,277	2013
c	c	c	86	c	3,266	2014
219	c	c	108	c	3,889	2015

In August 2016, a review of the concrete blocks data published since January 2015 identified errors in the published figures. These have been revised in this edition of the publication.

Table 12 : Concrete Blocks : Production, Deliveries and Stocks by English Region, Wales

	North East	Yorks & Humber	North West	West Midlands	East Midlands	East of England
(c) Total						
Monthly						
Production						
2015 Oct	980	1,170	431	574	532	701
Nov	961	1,113	416	516	512	582
Dec	594	825	273	284	301	378
Jan	498	837	354	393	398	475
2016 Feb	732	842	425	352	565	612
Mar	571	1,074	436	465	433	637
Apr	892	1,076	411	476	539	702
May	913	1,024	446	374	544	719
June	1,149	1,221	479	412	633	814
July	519	982	520	473	565	807
Aug	851	990	434	364	566	799
Sep	1,171	1,294	518	531	592	809
Deliveries (from)						
2015 Oct	978	1,084	425	546	502	677
Nov	460	1,010	352	490	489	588
Dec	595	748	257	286	328	401
Jan	1,030	832	335	380	432	522
2016 Feb	893	958	384	444	485	629
Mar	82	1,111	432	478	539	660
Apr	1,219	1,106	461	541	568	715
May	817	1,111	509	413	574	742
June	838	1,234	534	404	666	816
July	787	1,038	479	411	555	818
Aug	903	1,028	482	431	601	802
Sep	757	1,188	526	491	578	831
Stocks *						
2015 Oct	971	859	356	422	531	624
Nov	1,473	962	419	448	553	613
Dec	1,472	1,040	391	446	526	590
Jan	940	1,045	410	459	492	542
2016 Feb	779	929	462	368	571	526
Mar	1,269	892	478	354	465	503
Apr	872	862	428	290	435	490
May	968	775	365	250	406	468
June	1,278	763	310	258	373	466
July	1,011	707	351	321	383	456
Aug	960	669	303	253	348	453
Sep	1,374	775	307	293	362	431
Quarterly						
Production						
2015 Q2	505	3,439	1,053	1,456	1,525	1,955
Q3	2,368	3,161	1,092	1,363	1,664	2,021
Q4	2,536	3,108	1,120	1,374	1,345	1,660
2016 Q1	1,801	2,753	1,215	1,211	1,395	1,723
Q2	2,953	3,322	1,336	1,261	1,716	2,236
Q3	2,541	3,266	1,472	1,367	1,724	2,416
Deliveries (from)						
2015 Q2	477	4,008	1,187	1,682	1,623	2,008
Q3	2,988	3,472	1,130	1,608	1,654	2,057
Q4	2,033	2,841	1,035	1,322	1,319	1,665
2016 Q1	2,005	2,901	1,151	1,302	1,456	1,810
Q2	2,874	3,451	1,505	1,357	1,808	2,272
Q3	2,446	3,254	1,487	1,333	1,734	2,451
Annual						
Production						
2013	1,513	10,198	4,437	4,826	6,774	5,521
2014	2,001	10,331	5,097	5,699	6,417	6,300
2015	6,468	12,531	4,521	5,661	6,103	7,391
Deliveries (from)						
2013	1,543	10,778	4,690	4,882	6,912	5,612
2014	1,983	9,779	4,959	5,482	6,451	6,187
2015	6,420	12,857	4,399	5,845	6,060	7,519
Stocks *						
2013	153	709	216	412	509	493
2014	241	1,285	354	630	483	709
2015	1,472	1,040	391	446	526	590

Note: Regions refer to Government Office Regions

* Refers to stocks at end of period.

and Scotland

Thousand square metres

South East	South West	England	Wales	Scotland	Great Britain	
						(c) Total
						Monthly
						Production
618	656	5,662	495	237	6,393	2015 Oct
548	595	5,243	380	253	5,876	Nov
462	358	3,474	243	143	3,860	Dec
533	529	4,016	296	103	4,414	Jan
593	592	4,714	321	174	5,209	2016 Feb
664	625	4,905	391	205	5,501	Mar
600	677	5,373	402	166	5,942	Apr
572	726	5,318	416	210	5,943	May
701	720	6,129	460	173	6,762	June
688	665	5,219	488	122	5,829	July
604	734	5,342	495	207	6,044	Aug
747	748	6,410	542	162	7,113	Sep
						Deliveries (from)
629	658	5,501	500	252	6,252	2015 Oct
567	559	4,515	371	220	5,106	Nov
495	395	3,503	245	116	3,864	Dec
443	524	4,497	264	143	4,904	Jan
560	602	4,955	376	180	5,512	2016 Feb
607	643	4,552	386	191	5,130	Mar
566	709	5,885	425	173	6,483	Apr
627	718	5,510	400	198	6,107	May
748	792	6,031	469	182	6,682	June
641	728	5,456	441	170	6,066	July
634	693	5,574	474	172	6,220	Aug
712	747	5,830	475	189	6,494	Sep
						Stocks *
387	713	4,863	311	298	5,473	2015 Oct
368	750	5,586	320	394	6,300	Nov
335	712	5,510	338	433	6,282	Dec
425	716	5,029	369	393	5,791	Jan
458	706	4,799	315	439	5,552	2016 Feb
515	688	5,164	358	453	5,974	Mar
549	656	4,582	336	446	5,364	Apr
494	665	4,390	352	457	5,199	May
447	593	4,489	343	448	5,280	June
494	530	4,252	390	400	5,042	July
464	571	4,021	410	435	4,866	Aug
498	572	4,612	480	408	5,499	Sep
						Quarterly
						Production
1,821	2,136	13,890	1,065	557	15,512	2015 Q2
1,709	1,966	15,344	1,247	606	17,197	Q3
1,627	1,609	14,379	1,117	633	16,130	Q4
1,791	1,746	13,635	1,007	482	15,124	2016 Q1
1,873	2,124	16,820	1,278	549	18,648	Q2
2,038	2,147	16,971	1,524	490	18,985	Q3
						Deliveries (from)
1,937	1,977	14,901	1,101	560	16,562	2015 Q2
1,875	2,026	16,809	1,235	571	18,615	Q3
1,691	1,612	13,519	1,116	588	15,223	Q4
1,610	1,769	14,004	1,026	514	15,545	2016 Q1
1,941	2,219	17,426	1,293	553	19,273	Q2
1,987	2,168	16,860	1,390	531	18,780	Q3
						Annual
						Production
7,759	7,716	48,744	5,163	2,024	55,931	2013
6,848	8,608	51,286	4,354	2,260	57,899	2014
6,962	8,266	57,904	4,459	2,355	64,718	2015
						Deliveries (from)
7,894	8,172	50,483	5,301	2,111	57,895	2013
6,926	8,441	50,129	4,308	2,370	56,807	2014
7,126	8,009	58,235	4,434	2,251	64,920	2015
						Stocks *
513	588	3,593	277	301	4,171	2013
541	579	4,766	323	324	5,413	2014
335	712	5,510	338	433	6,282	2015

In August 2016, a review of the concrete blocks data published since January 2015 identified errors in the published figures. These have been revised in this edition of the publication.

OTHER BUILDING MATERIALS

Table 13 : Concrete Roofing Tiles and Ready-Mixed Concrete

		Great Britain			United Kingdom		United Kingdom	
		Concrete Roofing Tiles (Th.sq.m. of roof area covered)			Ready-Mixed Concrete # (Th.cu.m.)		Seasonally Adjusted Ready-Mixed Concrete (Th.cu.m.)	
		Production	Deliveries	Stocks *	Deliveries		Deliveries	
2005		25,719	24,489	4,902		22,432		22,432
2006		23,730	24,118	4,426		23,029		23,029
2007		23,551	23,812	3,646		23,548		23,548
2008		20,084	19,926	3,899		20,051		20,051
2009		14,079	15,612	2,344		14,069		14,069
2010		17,817	17,146	3,023		14,038		14,038
2011		17,712	17,684	3,126		15,121		15,121
2012		17,476	17,578	3,061		13,758		13,758
2013		18,745	19,580	2,214		15,089		15,089
2014		24,086	23,058	3,275		15,348		15,348
2015		25,105	24,475	3,904		16,294		16,339 p
2007	Q3	5,129	6,541	3,929		6,205		5,942
	Q4	6,028	5,914	3,646		5,686		5,930
2008	Q1	5,708	5,421	3,922		5,193		5,711
	Q2	5,815	5,679	4,488		5,773		5,274
	Q3	4,657	4,977	3,840		4,902		4,697
	Q4	3,903	3,849	3,899		4,183		4,369
2009	Q1	3,664	3,281	4,273		3,583		3,716
	Q2	3,055	3,936	3,391		3,637		3,509
	Q3	3,580	4,447	2,522		3,628		3,476
	Q4	3,779	3,949	2,344		3,221		3,368
2010	Q1	4,129	3,505	2,967		3,328		3,444
	Q2	4,961	4,922	3,008		3,819		3,709
	Q3	4,783	4,824	2,967		3,831		3,678
	Q4	3,945	3,894	3,023		3,060		3,206
2011	Q1	4,820	4,079	3,858		3,827		3,947
	Q2	4,565	4,398	4,022		3,907		3,798
	Q3	4,210	4,901	3,316		3,908		3,739
	Q4	4,116	4,306	3,126		3,479		3,636
2012	Q1	4,673	3,928	3,872		3,463		3,554
	Q2	4,236	4,100	4,008		3,399		3,310
	Q3	4,095	5,004	3,136		3,556		3,396
	Q4	4,471	4,547	3,061		3,340		3,498
2013	Q1	4,514	4,055	3,520		3,325		3,602
	Q2	4,209	4,598	3,131		4,108		3,815
	Q3	4,550	5,468	2,214		3,972		3,802
	Q4	5,471	5,459	2,214		3,684		3,870
2014	Q1	6,151	5,414	2,932		3,475		3,570
	Q2	6,195	5,491	3,687		3,977		3,895
	Q3	5,815	6,238	3,261		4,183		3,993
	Q4	5,925	5,915	3,275		3,713		3,891
2015	Q1	6,547	5,400	4,422		4,035		4,136
	Q2	6,296	5,843	4,875		3,992		3,936
	Q3	5,697	6,420	4,152		4,225		4,036 p
	Q4	6,565	6,812	3,904		4,042		4,231 p
2016	Q1	6,323	5,837	4,391		4,159		4,341 p
	Q2	6,082	6,292	4,185		4,251		4,069 p
	Q3	5,857	6,912	3,129		4,390		4,194 p

* Refers to stocks at the end of the period.

In April 2012, the Mineral Products Association (who provide these figures), estimated that data understates UK deliveries by around 20-25%. Previously, they had estimated that figures understate UK deliveries by 14-18%.

Concrete roofing tiles data have included imputation for non-responders in each quarter since 2012Q1.

From March 2015, seasonally adjusted figures for deliveries of ready-mixed concrete have been included in this table. In the production of these figures, ready-mixed concrete deliveries data back to Q1 1983 have been seasonally adjusted. This long run data series is available on request.

EXTERNAL TRADE

Table 14 : Value of Overseas Trade in Selected Materials and Components for Constructional Use : Imports (cif) & Exports (fob)

United Kingdom		Current Prices (£'000)					
		2010	2011	2012	2013	2014	2015
All Building Materials & Components	Imports	11,632,361	12,206,507	11,844,901	12,815,749	13,731,573	13,904,766
	Exports	5,772,232	6,143,891	5,585,912	5,840,442	6,090,137	5,998,751
	Balance	(5,860,129)	(6,062,616)	(6,258,989)	(6,975,307)	(7,641,436)	(7,906,015)
All Raw Materials	Imports	174,275	200,736	172,288	179,409	185,988	213,749
	Exports	132,349	140,525	78,895	85,900	95,513	66,371
	Balance	(41,926)	(60,211)	(93,393)	(93,509)	(90,475)	(147,378)
Sand for construction	Imports	5,259	7,558	8,514	8,977	8,595	13,281
	Exports	7,398	7,783	6,150	6,441	10,547	8,629
Crushed Rock : uncoated	Imports	36,490	41,280	30,691	25,752	26,345	25,110
	Exports	73,902	78,237	62,209	66,324	66,730	47,093
Crushed Rock : coated	Imports	2,642	3,057	4,376	1,580	7	9
	Exports	2,988	4,727	4,200	4,910	6,446	2,977
Building Stone : unprocessed	Imports	99,236	107,354	110,981	124,055	135,160	149,903
	Exports	4,053	3,716	1,881	2,313	1,900	1,690
Slate : unprocessed	Imports	5,799	4,686	5,165	6,212	7,091	10,699
	Exports	844	922	886	1,660	1,797	1,921
Gypsum & Anhydrite	Imports	7,040	7,284	8,119	8,027	7,379	9,810
	Exports	1,148	1,035	1,141	1,424	1,504	1,649
Bituminous Shale	Imports	17,809	29,517	4,442	4,806	1,411	4,937
	Exports	42,016	44,105	2,428	2,828	6,589	2,412
All Semi-Manufactures	Imports	1,639,598	1,698,664	1,649,529	1,828,094	2,068,559	1,960,219
	Exports	480,686	486,111	440,825	460,510	479,134	438,959
	Balance	(1,158,912)	(1,212,553)	(1,208,704)	(1,367,584)	(1,589,425)	(1,521,260)
Clinker	Imports	17,331	19,940	25,772	33,685	49,969	49,491
	Exports	1,205	2,763	1,989	929	3,557	1,368
Sawn Wood > 6mm thick	Imports	705,638	622,813	626,106	697,941	846,968	783,597
	Exports	19,437	14,671	12,043	14,952	18,938	18,626
Densified Wood	Imports	2,301	1,942	2,179	2,236	2,147	1,748
	Exports	518	569	509	691	541	498
Particle Board	Imports	30,755	34,479	27,318	36,598	43,721	44,053
	Exports	8,875	8,044	9,363	5,905	6,409	5,084
Laminated Wood	Imports	146,691	133,222	120,624	138,605	139,039	148,777
	Exports	11,698	11,051	7,100	6,915	8,361	10,474
Fibreboard	Imports	53,901	60,031	59,438	62,115	65,840	65,275
	Exports	24,727	11,162	12,143	10,292	7,453	6,261
Steel for Fabrication	Imports	286,866	354,980	339,984	362,872	389,262	313,745
	Exports	216,815	206,955	175,148	191,706	207,299	174,995
Aluminium for Fabrication	Imports	325,157	408,816	391,805	433,902	473,694	494,514
	Exports	131,665	160,722	153,622	159,481	158,047	155,775
Profiles of Vinyl Chloride	Imports	35,911	25,099	27,139	25,176	28,440	29,998
	Exports	23,337	24,027	23,339	24,225	24,317	22,642
Slag for Construction	Imports	5,825	1,906	2,074	4,393	7,232	8,330
	Exports	1,112	1,280	1,014	1,461	2,920	2,179
Tar & Bituminous Mixtures	Imports	27,742	33,081	25,013	28,706	19,896	18,665
	Exports	27,613	26,921	25,861	24,505	22,519	17,210
Lime	Imports	1,480	2,355	2,077	1,865	2,351	2,026
	Exports	13,684	17,946	18,694	19,448	18,773	23,847

EXTERNAL TRADE

Current Prices (£'000)

2015				2016			
Q2	Q3	Q4	Q1	Q2			
3,466,159	3,474,629	3,391,611	3,655,897	3,763,105	Imports	All Building Materials & Components	
1,534,838	1,472,017	1,480,682	1,488,767	1,587,899	Exports		
(1,931,321)	(2,002,612)	(1,910,929)	(2,167,130)	(2,175,206)	Balance		
61,596	55,206	46,057	56,991	60,074	Imports	All Raw Materials	
18,026	17,289	16,708	14,990	21,914	Exports		
(43,570)	(37,917)	(29,349)	(42,001)	(38,160)	Balance		
3,141	3,027	2,972	3,505	4,557	Imports	Sand for construction	
2,162	2,221	2,259	3,274	3,508	Exports		
5,454	5,816	7,902	7,813	7,024	Imports	Crushed Rock : uncoated	
13,085	11,690	11,710	9,450	15,041	Exports		
0	0	6	0	0	Imports	Crushed Rock : coated	
572	1,356	782	516	1,800	Exports		
46,648	39,469	27,717	36,667	39,968	Imports	Building Stone : unprocessed	
353	433	645	522	384	Exports		
3,122	3,165	1,866	2,362	2,022	Imports	Slate : unprocessed	
637	398	430	489	296	Exports		
1,902	2,187	3,955	4,801	5,627	Imports	Gypsum & Anhydrite	
384	404	424	326	387	Exports		
1,329	1,542	1,639	1,843	876	Imports	Bituminous Shale	
833	787	458	413	498	Exports		
508,626	480,829	460,386	466,828	526,923	Imports	All Semi-Manufactures	
119,224	100,361	106,790	111,715	119,419	Exports		
(389,402)	(380,468)	(353,596)	(355,113)	(407,504)	Balance		
14,871	13,257	10,742	8,433	13,751	Imports	Clinker	
99	288	125	106	239	Exports		
203,092	195,303	179,268	187,513	217,703	Imports	Sawn Wood > 6mm thick	
5,024	4,993	4,138	4,472	5,208	Exports		
646	442	261	269	303	Imports	Densified Wood	
122	136	123	129	131	Exports		
11,138	11,302	11,188	11,776	13,062	Imports	Particle Board	
1,125	1,165	1,449	1,388	1,650	Exports		
38,351	35,195	35,910	38,404	39,305	Imports	Laminated Wood	
2,880	2,901	2,466	3,236	3,463	Exports		
15,643	17,038	16,935	16,201	18,464	Imports	Fibreboard	
1,426	1,554	1,842	1,462	1,657	Exports		
84,028	68,081	70,000	68,240	77,298	Imports	Steel for Fabrication	
47,148	37,074	44,975	44,775	46,105	Exports		
125,530	124,943	121,645	117,176	128,707	Imports	Aluminium for Fabrication	
43,625	35,565	36,172	40,216	42,316	Exports		
7,455	8,011	7,015	12,758	8,338	Imports	Profiles of Vinyl Chloride	
5,408	5,789	5,234	4,558	5,567	Exports		
2,116	2,357	2,488	2,190	4,578	Imports	Slag for Construction	
435	333	735	243	261	Exports		
5,526	4,596	3,886	3,431	4,977	Imports	Tar & Bituminous Mixtures	
5,477	4,563	3,926	3,949	6,102	Exports		
230	304	1,048	437	437	Imports	Lime	
6,455	6,000	5,605	7,181	6,720	Exports		

EXTERNAL TRADE

**Table 14 : Value of Overseas Trade in Selected Materials and Components
for Constructional Use : Imports (cif) & Exports (fob)**

United Kingdom		Current Prices (£'000)					
		2010	2011	2012	2013	2014	2015
All Products & Components	Imports	9,818,488	10,307,107	10,023,084	10,808,246	11,477,026	11,730,798
	Exports	5,159,197	5,517,255	5,066,192	5,294,032	5,515,490	5,493,421
	Balance	(4,659,291)	(4,789,852)	(4,956,892)	(5,514,214)	(5,961,536)	(6,237,377)
Wood sleepers (rail & tram)	Imports	5,065	7,634	12,186	9,653	9,920	9,920
	Exports	717	893	2,849	578	65	86
Building Stone : processed	Imports	217,570	177,755	177,141	186,822	181,986	189,561
	Exports	30,751	10,603	10,047	10,928	16,701	22,639
Slate Roofing Tiles*	Imports	63,188	:	:	:	:	:
	Exports	6,286	:	:	:	:	:
Other Slate Products*	Imports	8,381	:	:	:	:	:
	Exports	1,725	:	:	:	:	:
Slate Products*	Imports	:	72,289	71,054	74,631	76,194	72,171
	Exports	:	7,413	6,481	8,733	8,692	8,189
Portland Cement	Imports	52,246	48,735	44,297	54,033	82,042	86,241
	Exports	4,178	5,481	5,251	5,355	5,024	6,321
Other Cements	Imports	50,669	61,532	43,621	50,769	53,854	60,734
	Exports	35,097	37,960	40,394	38,789	35,772	32,071
Steel Sheet Piling	Imports	61,527	51,576	64,412	64,077	87,513	77,089
	Exports	16,226	18,568	14,396	19,510	28,070	31,643
Ready-Mixed Concrete	Imports	822	36	34	239	341	160
	Exports	3,378	3,036	3,117	2,145	1,409	1,752
Concrete Reinforcing Bars	Imports	86,842	135,802	153,766	177,678	239,930	197,838
	Exports	60,252	46,970	55,782	49,821	25,061	35,785
Mortars	Imports	7,357	8,852	10,212	15,815	10,736	10,127
	Exports	3,757	8,936	4,776	5,634	3,855	5,725
Clay Bricks	Imports	19,778	22,918	24,048	35,714	77,630	64,468
	Exports	3,162	2,842	4,109	3,228	3,371	4,537
Clay Roofing Tiles	Imports	9,116	8,889	12,165	12,156	16,139	18,852
	Exports	589	207	192	217	353	274
Clay Pipes	Imports	225	258	614	923	4,565	1,044
	Exports	3,472	4,124	3,532	4,009	3,862	3,550
Other Clay Products	Imports	5,225	6,068	5,351	6,884	8,849	7,740
	Exports	3,188	3,566	2,702	1,732	2,014	2,419
Concrete Blocks & Bricks	Imports	4,369	7,466	8,461	13,471	14,506	12,200
	Exports	9,203	9,421	7,880	7,304	6,249	5,335
Concrete Roofing Tiles*	Imports	5,017	:	:	:	:	:
	Exports	2,949	:	:	:	:	:
Other Concrete Tiles & Paving*	Imports	13,297	:	:	:	:	:
	Exports	13,594	:	:	:	:	:
Concrete Tiles and Pavings*	Imports	:	19,565	18,118	17,789	20,243	23,726
	Exports	:	13,478	18,118	11,429	11,905	9,427
Prefabricated Concrete Products	Imports	28,811	20,514	23,137	35,481	47,339	73,013
	Exports	12,390	4,432	4,078	3,718	3,064	1,282
Concrete Pipes	Imports	45,485	61,426	51,663	60,193	85,679	105,963
	Exports	24,339	26,578	25,227	35,908	37,826	38,318

Current Prices (£'000)

2015 Q2	Q3	Q4	2016 Q1	Q2		
2,895,937 r	2,938,594 r	2,885,168 r	3,132,078 r	3,176,108	Imports	All Products & Components
1,397,588 r	1,354,367 r	1,357,184 r	1,362,062 r	1,446,566	Exports	
(1,498,349) r	(1,584,227) r	(1,527,984) r	(1,770,016) r	(1,729,542)	Balance	
1,963 9	2,346 22	3,244 35	2,407 95	2,083 103	Imports Exports	Wood sleepers (rail & tram)
47,491 4,926 r	48,185 5,754 r	42,580 r 6,589 r	51,459 r 3,482 r	49,834 1,992	Imports Exports	Building Stone : processed
:	:	:	:	:	Imports	Slate Roofing Tiles*
:	:	:	:	:	Exports	
:	:	:	:	:	Imports	Other Slate Products*
:	:	:	:	:	Exports	
17,234 2,198	17,899 1,516	17,697 1,504	18,558 r 1,780	19,645 1,844	Imports Exports	Slate Products*
21,716 r 1,233	22,942 1,719	21,896 r 2,224	23,988 r 1,530	30,685 1,530	Imports Exports	Portland Cement
15,208 9,363 r	14,614 r 7,207	17,295 r 6,085	14,582 r 7,199 r	16,435 8,038	Imports Exports	Other Cements
19,401 8,830 r	14,302 7,668	22,356 r 6,746	18,769 r 6,681 r	16,145 7,605	Imports Exports	Steel Sheet Piling
23 458	10 577	0 429	0 749	1 488	Imports Exports	Ready-Mixed Concrete
47,908 9,610	45,467 9,135 r	53,131 9,675	28,055 r 6,982	33,146 6,736	Imports Exports	Concrete Reinforcing Bars
2,612 1,329 r	2,794 1,724	2,198 1,417	2,374 r 1,541 r	3,126 2,195	Imports Exports	Mortars
19,394 1,006	16,013 1,569	11,088 1,159	14,492 r 1,407	16,760 1,982	Imports Exports	Clay Bricks
3,871 56	5,149 75	5,726 119	6,335 62	5,592 64	Imports Exports	Clay Roofing Tiles
247 788	305 941	217 900	280 1,000	310 1,200	Imports Exports	Clay Pipes
2,574 531	1,664 385	1,803 687	3,050 r 838	3,517 535	Imports Exports	Other Clay Products
3,694 1,401	2,849 1,537	2,742 1,329	3,442 r 1,372	5,417 2,151	Imports Exports	Concrete Blocks & Bricks
:	:	:	:	:	Imports	Concrete Roofing Tiles*
:	:	:	:	:	Exports	
:	:	:	:	:	Imports	Other Concrete Tiles & Paving*
:	:	:	:	:	Exports	
5,282 2,466	6,109 2,754	7,034 2,129	6,986 2,629 r	7,917 4,360	Imports Exports	Concrete Tiles and Pavings*
16,165 384	15,159 361	21,991 385	26,912 r 244	36,042 425	Imports Exports	Prefabricated Concrete Products
26,016 9,900	26,993 9,222 r	28,414 9,469	31,340 r 10,350 r	31,231 11,859	Imports Exports	Concrete Pipes

* Due to changes to in European Commission product classifications Slate Roofing Tiles and Other Slate Products have been combined. Similarly, Concrete Roofing Tiles and Other Concrete Tiles and Pavings have been combined.

EXTERNAL TRADE

Table 14 : Value of Overseas Trade in Selected Materials and Components for Constructional Use : Imports (cif) & Exports (fob)

United Kingdom		Current Prices (£'000)					
		2010	2011	2012	2013	2014	2015
Products & Components (continued)							
Structural Units (steel)	Imports	604,136	648,018	329,443	360,910	265,159	242,664
	Exports	486,891	472,789	165,219	202,503	212,961	187,947
Structural Units (aluminium)	Imports	178,196	235,864	245,771	254,374	275,409	229,463
	Exports	54,971	61,224	61,176	69,336	77,383	72,837
Steel Tubes & Hollow Sections	Imports	130,955	154,120	161,987	134,903	164,353	127,047
	Exports	108,503	128,588	107,576	97,198	113,620	94,695
Bituminous Roofing Felt*	Imports	39,835	:	:	:	:	:
	Exports	2,744	:	:	:	:	:
Other Asphalt products*	Imports	10,750	:	:	:	:	:
	Exports	14,474	:	:	:	:	:
Asphalt Products*	Imports	:	54,421	57,425	63,671	65,633	62,171
	Exports	:	18,070	15,163	11,295	12,098	11,690
Mineral Insulating Materials	Imports	81,060	83,477	87,113	84,674	107,290	99,542
	Exports	146,430	164,857	166,592	161,244	186,202	151,080
Glass Fibre**	Imports	381	602	:	:	:	:
	Exports	1,075	2,669	:	:	:	:
Fibre Cement Products	Imports	31,019	35,084	37,205	48,773	63,844	64,201
	Exports	5,849	9,199	9,134	7,733	5,690	6,866
Building Plasters ¹	Imports	:	:	:	:	:	:
	Exports	:	:	:	:	:	:
Plasters ¹	Imports	13,820	11,656	11,629	9,029	11,797	9,311
	Exports	7,905	9,168	9,201	7,413	8,035	7,925
Plasterboard	Imports	15,007	18,972	15,534	14,565	18,228	29,038
	Exports	12,912	12,522	12,649	12,473	11,867	10,895
Copper Pipes	Imports	241,116	228,049	208,675	213,913	228,841	232,193
	Exports	146,447	142,770	118,294	125,802	120,313	98,036
Lead Pipes & Fittings**	Imports	148	:	:	:	:	:
	Exports	243	:	:	:	:	:
Zinc Pipes & Fittings*	Imports	757	:	:	:	:	:
	Exports	914	:	:	:	:	:
Other Zinc Building Products*	Imports	13,000	:	:	:	:	:
	Exports	26,529	:	:	:	:	:
Zinc Building Products*	Imports	:	12,933	14,449	14,119	15,982	17,863
	Exports	:	24,595	35,406	25,914	15,982	33,036
Plastic Pipes	Imports	105,667	114,260	108,156	127,180	138,198	135,611
	Exports	149,389	156,648	163,915	161,781	156,863	149,220
Other Plastic Building Products	Imports	148,270	157,129	153,056	171,493	193,851	205,501
	Exports	110,278	129,742	104,823	112,800	122,062	124,773
Builders Ironmongery	Imports	312,316	314,993	337,893	327,213	346,824	371,498
	Exports	112,191	128,039	122,964	208,567	148,971	138,961
Nails & Screws	Imports	66,865	64,896	61,113	72,072	72,449	68,360
	Exports	8,949	11,186	7,495	8,160	7,657	8,023
Mastics, Putty	Imports	143,430	151,902	164,617	174,720	172,913	180,937
	Exports	115,349	139,748	128,071	130,835	140,125	137,914
Paints & Varnishes	Imports	376,374	403,309	420,208	439,361	439,810	437,542
	Exports	552,294	622,468	630,022	648,128	669,768	607,263

¹ From Q1 2010 onwards the Plasters category will contain Building Plaster and Other Plasters, as Building Plasters data is no longer collected

EXTERNAL TRADE

Current Prices (£'000)

2015 Q2	Q3	Q4	2016 Q1	Q2	Products & Components (continued)	
53,780 r	46,698	64,921 r	89,126 r	78,589	Imports	Structural Units (steel)
55,747	46,746	48,235	42,514 r	51,201	Exports	
44,619 r	70,189	61,241 r	89,604 r	100,171	Imports	Structural Units (aluminium)
22,035	14,473	17,163	14,848 r	15,103	Exports	
32,472	33,161	26,133	29,131 r	31,434	Imports	Steel Tubes & Hollow Sections
21,731	19,471	29,801 r	16,503 r	17,778	Exports	
:	:	:	:	:	Imports	Bituminous Roofing Felt*
:	:	:	:	:	Exports	
:	:	:	:	:	Imports	Other Asphalt products*
:	:	:	:	:	Exports	
15,903	16,274	13,104	14,447 r	18,465	Imports	Asphalt Products*
2,845	2,663	3,296	2,487 r	3,268	Exports	
25,666	26,302	23,436	24,601 r	26,667	Imports	Mineral Insulating Materials
39,355	36,988	32,776	36,454	38,426	Exports	
:	:	:	:	:	Imports	Glass Fibre**
:	:	:	:	:	Exports	
16,491	16,681	14,691	16,423 r	18,034	Imports	Fibre Cement Products
1,684	1,509	2,032	2,339	2,861	Exports	
:	:	:	:	:	Imports	Building Plasters1
:	:	:	:	:	Exports	
3,068	2,257	1,710	2,262	2,376	Imports	Plasters1
1,961 r	2,026	2,150	2,248	2,570	Exports	
7,295	6,593	9,936	7,989	7,972	Imports	Plasterboard
2,562	2,792	2,814	3,010	3,252	Exports	
59,512	54,629	54,527	61,796 r	60,505	Imports	Copper Pipes
25,903	24,647	21,532	22,160 r	20,947	Exports	
:	:	:	:	:	Imports	Lead Pipes & Fittings**
:	:	:	:	:	Exports	
:	:	:	:	:	Imports	Zinc Pipes & Fittings*
:	:	:	:	:	Exports	
:	:	:	:	:	Imports	Other Zinc Building Products*
:	:	:	:	:	Exports	
4,302 r	4,692 r	4,316 r	5,120 r	4,685	Imports	Zinc Building Products*
9,625	8,209	7,164	9,964 r	9,185	Exports	
33,185 r	35,197	30,434 r	34,660 r	37,251	Imports	Plastic Pipes
40,747	37,365	33,474	38,679 r	43,492	Exports	
48,445 r	53,874 r	50,134 r	53,355 r	60,680	Imports	Other Plastic Building Products
34,876 r	31,680	29,406 r	29,107 r	33,199	Exports	
91,064 r	91,016 r	93,012 r	92,701 r	93,331	Imports	Builders Ironmongery
33,031 r	31,905 r	40,079 r	39,126 r	42,625	Exports	
16,375	16,820	16,105	17,963	19,169	Imports	Nails & Screws
1,761	2,172	2,244	1,979 r	2,485	Exports	
45,637	46,349	44,916	48,610 r	54,003	Imports	Mastics, Putty
34,073	36,616 r	35,123	36,701 r	42,854	Exports	
108,963 r	109,725 r	106,572 r	112,064 r	115,115	Imports	Paints & Varnishes
161,268 r	148,538 r	137,588 r	147,815 r	164,857	Exports	

* Due to changes to in European Commission product classifications Bituminous Roofing Felt and Other Asphalt products have been combined. Similarly, Zinc Pipes & Fittings and Other Zinc Building Products have been combined.

** Data for Lead Pipes and Fittings and Glass Fibre are no longer collected.

EXTERNAL TRADE

**Table 14 : Value of Overseas Trade in Selected Materials and Components
for Constructional Use : Imports (cif) & Exports (fob)**

United Kingdom		Current Prices (£'000)					
		2010	2011	2012	2013	2014	2015
Products & Components (continued)							
Unglazed Ceramic Tiles	Imports	56,551	63,864	62,449	76,621	73,195	69,862
	Exports	2,829	2,817	3,473	2,643	3,173	3,710
Glazed Ceramic Tiles	Imports	224,557	212,986	210,481	208,036	199,680	203,113
	Exports	15,455	18,784	17,616	18,096	17,105	15,867
Ceramic Sanitaryware	Imports	168,666	178,028	178,028	178,234	199,372	201,395
	Exports	37,883	37,259	32,173	33,881	34,903	29,386
Plastic Sanitaryware	Imports	112,513	109,817	107,300	120,758	134,398	137,983
	Exports	67,886	62,582	51,630	50,654	49,786	47,037
Metal Sanitaryware	Imports	124,666	136,536	121,981	125,257	128,871	133,225
	Exports	28,274	32,644	38,568	37,438	35,270	38,149
Flat Glass	Imports	61,048	64,992	65,254	48,867	54,811	50,804
	Exports	73,175	109,162	79,461	45,199	28,721	25,317
Other Glass Products	Imports	81,083	85,002	82,883	82,513	75,073	82,429
	Exports	33,081	32,612	32,277	28,361	26,537	27,101
Wood Veneers	Imports	31,681	36,202	33,643	35,285	33,086	29,763
	Exports	5,824	7,593	7,341	5,454	6,034	4,591
Wood Mouldings	Imports	66,802	59,139	58,455	67,625	69,319	68,027
	Exports	9,660	8,977	8,236	7,983	8,989	9,786
Wood Block Flooring	Imports	144,394	139,916	150,548	137,383	158,837	177,410
	Exports	4,535	4,540	4,801	5,198	6,172	7,329
Other Builder's Woodwork	Imports	99,394	89,758	89,209	99,986	101,021	118,448
	Exports	14,319	16,308	13,673	14,834	16,573	13,887
Windows (wood)	Imports	111,934	118,893	113,086	120,028	138,418	151,026
	Exports	7,786	9,885	8,572	9,463	11,479	12,580
Doors (wood)	Imports	217,810	202,006	190,705	202,535	209,928	228,777
	Exports	16,873	13,323	15,808	13,618	16,405	17,141
Doors & Windows (steel)	Imports	35,987	35,431	38,650	41,467	47,645	46,899
	Exports	19,222	18,996	23,981	26,047	27,001	29,452
Doors & Windows (aluminium)	Imports	72,365	70,526	71,969	71,848	71,721	76,900
	Exports	19,950	24,141	18,529	16,977	18,250	21,563
Doors & Windows (plastic)	Imports	46,337	52,738	56,590	55,356	61,974	63,762
	Exports	44,433	39,423	30,131	30,981	33,174	38,945
Cork Tiles	Imports	2,951	4,018	2,999	2,916	2,973	1,581
	Exports	1,646	2,139	1,835	2,335	2,219	2,456
Linoleum Floor Coverings	Imports	279,065	317,850	306,860	342,141	336,381	364,202
	Exports	228,832	233,662	214,599	218,906	231,388	221,618
Wallpaper	Imports	56,701	58,370	59,047	60,533	64,886	67,081
	Exports	82,940	85,873	76,111	83,311	79,472	74,091
Textile Wall Coverings	Imports	3,323	3,007	3,306	4,677	5,165	5,133
	Exports	609	688	623	865	950	785

Current Prices (£'000)

2015 Q2	Q3	Q4	2016 Q1	Q2	Products & Components (continued)	
16,219 913	17,620 1,019	17,968 1,130	18,699 r 1,100	18,149 881	Imports Exports	Unglazed Ceramic Tiles
51,467 3,618	50,912 5,112	47,871 r 3,480 r	60,426 r 3,915	57,276 4,650	Imports Exports	Glazed Ceramic Tiles
46,030 7,721	52,430 7,302	48,235 r 7,357	55,652 r 7,817 r	50,121 8,745	Imports Exports	Ceramic Sanitaryware
33,013 r 11,860 r	34,167 11,829 r	33,587 11,490	38,202 r 11,720 r	38,013 14,312	Imports Exports	Plastic Sanitaryware
30,834 r 9,453	34,120 r 9,692 r	30,208 r 10,241	35,622 r 11,959 r	35,866 10,175	Imports Exports	Metal Sanitaryware
13,639 6,387	12,663 7,019	11,987 6,082	17,360 6,212	16,785 5,933	Imports Exports	Flat Glass
20,540 5,692	22,253 r 7,081	21,258 r 7,399	20,710 r 9,940 r	19,531 8,753	Imports Exports	Other Glass Products
6,893 984	7,900 2,099	7,168 879	9,609 1,461	8,229 1,415	Imports Exports	Wood Veneers
18,893 2,866 r	18,072 2,553	12,525 2,153	14,655 r 2,141	19,264 2,658	Imports Exports	Wood Mouldings
41,833 1,900	46,947 r 1,946	42,190 1,870	41,042 r 2,324 r	37,640 2,305	Imports Exports	Wood Block Flooring
30,944 4,827	30,560 3,117	31,093 2,959	31,008 r 3,732 r	33,231 2,768	Imports Exports	Other Builder's Woodwork
39,497 3,604	39,779 3,675	36,572 2,825	38,835 r 2,005 r	42,349 3,939	Imports Exports	Windows (wood)
58,869 4,053	58,667 4,866	54,935 4,386	59,344 r 4,208 r	61,926 5,376	Imports Exports	Doors (wood)
11,467 7,020	12,574 9,080	11,381 8,315 r	12,375 r 7,171	15,545 9,592	Imports Exports	Doors & Windows (steel)
19,479 5,992	17,942 4,976	19,324 4,923	27,585 r 5,670 r	21,678 6,138	Imports Exports	Doors & Windows (aluminium)
16,906 8,962	16,205 8,952	14,478 9,246	15,513 r 6,979 r	19,071 9,384	Imports Exports	Doors & Windows (plastic)
157 659	354 527	432 588	174 537	216 523	Imports Exports	Cork Tiles
95,120 r 57,344	92,315 r 56,920 r	87,925 r 50,360	92,627 r 61,182 r	99,317 63,981	Imports Exports	Linoleum Floor Coverings
17,042 19,766 r	17,222 17,598 r	17,696 18,545 r	18,051 r 20,172 r	15,567 22,325	Imports Exports	Wallpaper
1,235 196	1,356 186 r	1,390 r 157	1,695 231	1,081 221	Imports Exports	Textile Wall Coverings

EXTERNAL TRADE

Table 14 : Value of Overseas Trade in Selected Materials and Components for Constructional Use : Imports (cif) & Exports (fob)

United Kingdom		Current Prices (£'000)					
		2010	2011	2012	2013	2014	2015
Products & Components (continued)							
Fitted Kitchens (assembled)	Imports	111,345	80,006	81,101	82,980	73,785	75,096
	Exports	16,122	15,729	19,679	27,033	24,975	22,884
Prefabricated Buildings (wood)	Imports	32,687	34,909	30,816	39,820	47,581	64,011
	Exports	10,546	8,391	10,218	2,801	3,998	5,438
Prefabricated Buildings (steel)	Imports	29,783	37,366	26,665	42,692	45,971	59,229
	Exports	37,158	50,070	57,755	50,529	36,982	38,377
Prefabricated Buildings (other)	Imports	34,323	29,862	36,418	27,604	44,210	38,773
	Exports	17,643	19,082	27,935	27,012	35,030	26,988
Mobile Homes	Imports	2,165	1,430	2,188	1,918	795	288
	Exports	3,666	2,427	8,163	10,507	9,890	10,784
Taps & Valves	Imports	322,207	334,356	339,013	365,311	372,025	396,977
	Exports	73,202	69,125	88,358	95,643	97,439	106,337
Pumps (circulating)	Imports	21,878	22,061	27,735	32,303	37,205	38,310
	Exports	32,078	22,154	12,655	5,146	6,894	12,767
Central Heating Boilers	Imports	554,452	572,298	523,778	617,986	590,564	584,030
	Exports	74,832	77,852	72,150	71,886	63,436	75,463
Radiators	Imports	189,792	178,677	173,172	186,183	181,277	184,085
	Exports	31,085	28,270	36,831	39,205	41,046	40,929
Water Heaters	Imports	84,627	90,676	87,999	115,834	122,971	127,898
	Exports	63,036	67,672	59,349	62,133	58,529	65,808
Space Heaters	Imports	136,729	148,616	100,179	129,259	126,100	130,099
	Exports	32,001	32,926	23,271	21,876	30,221	31,490
Fan Systems	Imports	172,161	190,441	178,384	204,156	223,294	245,360
	Exports	109,339	124,299	137,847	144,013	151,261	143,119
Air Conditioning Equipment	Imports	527,857	576,155	521,929	534,895	534,282	518,087
	Exports	270,112	262,557	254,516	238,546	269,524	284,946
Air Purifying Equipment	Imports	53,220	66,549	70,947	66,095	82,949	78,450
	Exports	148,638	183,241	192,262	223,389	223,275	229,591
Hand Driers	Imports	8,987	10,496	10,346	10,562	11,934	12,131
	Exports	1,905	1,950	1,759	1,231	1,577	1,990
Meters	Imports	28,701	44,041	62,079	49,642	59,692	97,599
	Exports	52,825	72,518	75,045	75,425	76,447	73,939
Plugs & Sockets	Imports	303,121	329,210	339,083	389,189	428,567	440,962
	Exports	182,364	214,654	216,827	260,065	290,120	306,814
Electrical Wires	Imports	1,213,470	1,346,886	1,381,293	1,491,763	1,573,631	1,555,575
	Exports	515,544	571,975	512,077	547,345	643,696	685,189
Electrical Insulators	Imports	30,596	26,548	33,792	32,456	43,145	37,547
	Exports	32,574	30,485	28,458	26,371	26,337	27,498
Lamps & Fittings	Imports	515,852	520,951	598,919	703,345	812,754	875,583
	Exports	216,816	266,980	287,310	286,726	283,367	329,238
Fire & Security Alarms	Imports	151,642	122,662	141,729	165,267	180,962	243,331
	Exports	208,281	173,480	182,177	194,485	241,405	261,334
Lifts & Escalators	Imports	96,973	102,832	117,522	109,622	118,531	125,768
	Exports	14,628	21,220	21,745	30,201	32,756	21,193

EXTERNAL TRADE

Current Prices (£'000)

2015 Q2	Q3	Q4	2016 Q1	Q2	Products & Components (continued)	
19,979	18,139	16,949 r	18,021 r	18,241	Imports	Fitted Kitchens (assembled)
7,252	4,585	5,623	4,155	5,795	Exports	
18,451	7,231	17,643	10,736 r	19,328	Imports	Prefabricated Buildings (wood)
989	1,032	2,705	665	577	Exports	
15,469 r	12,242	14,711	20,409 r	18,491	Imports	Prefabricated Buildings (steel)
5,765	11,052	8,613	7,890	10,212	Exports	
9,241	6,776	6,502	10,642 r	14,166	Imports	Prefabricated Buildings (other)
10,209 r	4,991 r	6,490 r	3,605 r	2,274	Exports	
5	36	224	83	60	Imports	Mobile Homes
2,758	3,055	2,067	2,230	2,262	Exports	
95,386	100,983 r	92,266	100,063 r	99,463	Imports	Taps & Valves
23,222 r	27,735 r	29,513 r	26,908 r	27,286	Exports	
6,425	8,999	11,190	11,908	10,103	Imports	Pumps (circulating)
4,022	2,201	3,213	4,133	2,568	Exports	
132,646	146,208	158,322 r	156,464 r	145,071	Imports	Central Heating Boilers
17,064	23,430	19,478	23,133 r	22,125	Exports	
42,448	44,323	47,250	48,526 r	42,444	Imports	Radiators
9,917	8,585	10,863	11,204 r	11,094	Exports	
29,754 r	36,260	30,755	34,793 r	34,162	Imports	Water Heaters
16,476	16,338	15,973	15,305 r	18,283	Exports	
18,654	32,764	52,022 r	31,046 r	22,392	Imports	Space Heaters
6,251	7,392	10,420 r	7,142 r	6,065	Exports	
69,258 r	53,280 r	60,543 r	64,470 r	78,655	Imports	Fan Systems
36,660 r	36,479 r	32,405 r	30,070 r	33,050	Exports	
133,357	126,250	121,890	127,151 r	143,162	Imports	Air Conditioning Equipment
69,357	74,338	69,575	68,000 r	75,006	Exports	
18,863 r	18,660 r	18,488	17,919 r	24,903	Imports	Air Purifying Equipment
58,172 r	55,950	55,972	66,350 r	71,537	Exports	
3,293	2,447	3,321	2,542	3,238	Imports	Hand Driers
388	528	524	493 r	576	Exports	
21,706 r	21,791 r	30,067 r	30,274 r	30,199	Imports	Meters
17,563	19,087	16,519	17,405 r	15,630	Exports	
110,725 r	106,816 r	104,626 r	118,974 r	125,555	Imports	Plugs & Sockets
76,890	75,683	76,221	87,597 r	89,456	Exports	
422,944 r	402,274 r	352,182 r	428,950 r	417,747	Imports	Electrical Wires
162,203 r	164,273 r	183,418 r	168,369 r	154,639	Exports	
10,992	8,879	7,575	10,709 r	8,318	Imports	Electrical Insulators
6,862	6,681	5,673	6,717 r	5,902	Exports	
192,600 r	231,050 r	221,441 r	246,713 r	220,554	Imports	Lamps & Fittings
81,697 r	83,962 r	87,636 r	81,332 r	89,917	Exports	
61,558	60,924	60,761 r	47,625 r	50,699	Imports	Fire & Security Alarms
72,671	57,310	57,692	55,128 r	67,424	Exports	
34,530	34,947	33,617 r	31,995 r	31,969	Imports	Lifts & Escalators
3,691	4,165	6,448	9,880 r	3,604	Exports	

EXTERNAL TRADE

Table 15 : Value of EU* and Non-EU Trade in Selected Materials and Components for Constructional Use : Imports (cif) & Exports (fob)

United Kingdom

Current Prices (£'000)

		2010		2011		2012	
		EU	Non-EU	EU	Non-EU	EU	Non-EU
All Building Materials & Components							
	Imports	7,416,164	4,216,197	7,791,150	4,415,353	7,464,918	4,379,990
	Exports	3,634,580	2,137,652	3,836,353	2,307,527	3,349,429	2,236,477
	Balance	(3,781,584)	(2,078,546)	(3,954,797)	(2,107,825)	(4,115,489)	(2,143,514)
All Raw Materials							
	Imports	73,969	100,305	92,670	108,066	57,784	114,506
	Exports	124,617	7,731	132,235	8,289	71,150	7,743
	Balance	50,648	(92,575)	39,564	(99,777)	13,366	(106,763)
Sand for construction	Imports	2,429	2,831	3,468	4,090	3,269	5,246
	Exports	4,543	2,855	4,698	3,084	3,320	2,830
Crushed Rock : uncoated	Imports	14,562	21,927	19,192	22,088	13,721	16,970
	Exports	72,247	1,655	76,193	2,044	59,633	2,575
Crushed Rock : coated	Imports	2,638	3	3,045	12	4,376	0
	Exports	2,934	54	4,685	42	4,035	164
Building Stone : unprocessed	Imports	29,131	70,106	31,365	75,988	25,018	85,963
	Exports	3,130	923	2,760	956	1,261	620
Slate : unprocessed	Imports	2,411	3,388	1,521	3,166	1,702	3,464
	Exports	266	578	525	397	766	120
Gypsum & Anhydrite	Imports	6,078	962	5,753	1,531	6,806	1,312
	Exports	312	835	325	710	424	717
Bituminous Shale	Imports	16,720	1,088	28,326	1,190	2,891	1,551
	Exports	41,185	831	43,049	1,056	1,711	718
All Semi-Manufactures							
	Imports	1,328,038	311,556	1,386,509	312,158	1,363,198	286,330
	Exports	371,003	109,682	378,816	107,294	342,638	98,185
	Balance	(957,035)	(201,874)	(1,007,693)	(204,864)	(1,020,560)	(188,145)
Clinker	Imports	17,278	53	19,825	115	25,772	0
	Exports	131	1,074	1,091	1,672	1,265	723
Sawn Wood > 6mm thick	Imports	645,797	59,840	571,283	51,531	581,376	44,730
	Exports	19,202	235	14,436	235	11,674	370
Densified Wood	Imports	1,215	1,085	1,032	910	665	1,514
	Exports	478	39	519	49	496	13
Particle Board	Imports	30,276	479	34,231	247	27,099	219
	Exports	8,363	512	6,820	1,224	8,071	1,292
Laminated Wood	Imports	59,688	87,004	60,667	72,555	52,886	67,739
	Exports	10,977	721	9,490	1,561	6,152	946
Fibreboard	Imports	47,122	6,780	50,980	9,051	50,010	9,428
	Exports	7,018	17,709	7,917	3,245	7,410	4,733
Steel for Fabrication	Imports	210,551	76,314	266,122	88,859	273,657	66,327
	Exports	179,310	37,505	171,470	35,485	143,612	31,536
Aluminium for Fabrication	Imports	249,881	75,275	322,471	86,346	298,207	93,599
	Exports	96,615	35,049	115,642	45,080	118,781	34,841
Profiles of Vinyl Chloride	Imports	34,976	934	24,063	1,036	25,916	1,223
	Exports	20,232	3,105	19,570	4,456	18,954	4,384
Slag for Construction	Imports	3,600	2,225	1,906	0	2,059	14
	Exports	654	459	586	695	383	631
Tar & Bituminous Mixtures	Imports	26,201	1,540	31,666	1,416	23,562	1,450
	Exports	20,912	6,700	21,446	5,475	18,594	7,266
Lime	Imports	1,452	26	2,265	91	1,989	88
	Exports	7,111	6,573	9,830	8,116	7,245	11,450

* For this table EU refers to members of the European Union at that time. There is a discontinuity from 2006 to 2007 when Bulgaria and Romania joined the European Union.

Current Prices (£'000)

2013		2014		2015			
EU	Non-EU	EU	Non-EU	EU	Non-EU		
8,130,834	4,684,915	8,533,729 r	5,197,845 r	8,415,033 r	5,489,728 r	Imports	All Building Materials & Components
3,510,609	2,329,828	3,601,232 r	2,488,897 r	3,493,045 r	2,505,699 r	Exports	
(4,620,225)	(2,355,087)	(4,932,497) r	(2,708,947) r	(4,921,988) r	(2,984,029) r	Balance	
58,737	120,672	50,778 r	135,210	59,566 r	154,184	Imports	All Raw Materials
76,323	9,578	85,166 r	10,345	54,961 r	11,407	Exports	
17,586	(111,093)	34,388 r	(124,866)	(4,605) r	(142,776)	Balance	
3,977	4,999	6,464 r	2,131	11,312 r	1,969	Imports	Sand for construction
2,361	4,080	4,968 r	5,577	3,456 r	5,172	Exports	
12,577	13,175	13,520 r	12,825	13,450	11,661	Imports	Crushed Rock : uncoated
64,514	1,811	64,803 r	1,927	44,880 r	2,213	Exports	
1,581	0	7	0	10	0	Imports	Crushed Rock : coated
4,808	102	6,349	96	2,819	158	Exports	
27,436	96,618	22,409 r	112,752	18,027 r	131,876	Imports	Building Stone : unprocessed
1,486	828	1,353 r	546	710	980	Exports	
2,093	4,119	1,537 r	5,553	4,357	6,342	Imports	Slate : unprocessed
257	1,403	576	1,221	538	1,382	Exports	
7,199	829	6,328 r	1,051	8,488	1,321	Imports	Gypsum & Anhydrite
639	786	645	860	738	911	Exports	
3,873	932	513	899	3,922	1,015	Imports	Bituminous Shale
2,259	569	6,472	118	1,820	592	Exports	
1,519,868	308,228	1,710,622 r	357,935	1,618,360 r	341,859	Imports	All Semi-Manufactures
344,557	115,950	334,840 r	144,295	290,806 r	148,147	Exports	
(1,175,311)	(192,278)	(1,375,782) r	(213,640)	(1,327,554) r	(193,712)	Balance	
33,667	18	49,947	22	49,491 r	0	Imports	Clinker
644	284	1,938	1,619	426	941	Exports	
647,892	50,048	789,373 r	57,594	729,355	54,242	Imports	Sawn Wood > 6mm thick
14,273	679	17,459 r	1,478	17,876	751	Exports	
552	1,684	184	1,963	147	1,602	Imports	Densified Wood
615	76	508 r	33	473	24	Exports	
35,741	857	43,108 r	612	43,578	475	Imports	Particle Board
4,806	1,099	5,256	1,153	4,415	669	Exports	
56,039	82,566	55,900 r	83,139	59,528	89,250	Imports	Laminated Wood
5,485	1,428	6,968	1,393	8,752	1,721	Exports	
52,306	9,809	54,788 r	11,051	51,262 r	14,013	Imports	Fibreboard
7,709	2,583	5,464	1,989	4,201	2,058	Exports	
293,324	69,548	293,084 r	96,177	248,286 r	65,458	Imports	Steel for Fabrication
143,836	47,870	124,365 r	82,935	99,476	75,518	Exports	
342,828	91,075	368,848 r	104,846	381,138 r	113,375	Imports	Aluminium for Fabrication
122,790	36,690	129,172 r	28,875	118,900 r	36,874	Exports	
24,000	1,176	27,564 r	876	28,605 r	1,394	Imports	Profiles of Vinyl Chloride
20,318	3,907	19,384 r	4,933	18,559	4,083	Exports	
4,393	0	7,223	9	8,323	7	Imports	Slag for Construction
256	1,205	336	2,585	236	1,942	Exports	
27,330	1,376	18,340	1,556	16,659	2,006	Imports	Tar & Bituminous Mixtures
16,456	8,048	13,818 r	8,701	9,058	8,152	Exports	
1,794	71	2,261	89	1,990	37	Imports	Lime
7,370	12,079	10,174	8,599	8,432	15,414	Exports	

* For this table EU refers to members of the European Union at that time. There is a discontinuity from 2006 to 2007 when Bulgaria and Romania joined the European Union.

EXTERNAL TRADE

Table 15 : Value of EU and Non-EU Trade in Selected Materials and Components for Constructional Use : Imports (cif) & Exports (fob)

United Kingdom		Current Prices (£'000)					
		2010		2011		2012	
		EU	Non-EU	EU	Non-EU	EU	Non-EU
All Products & Components	Imports	6,014,157	3,804,335	6,311,971	3,995,132	6,043,935	3,979,152
	Exports	3,138,960	2,020,239	3,325,303	2,191,944	2,935,640	2,130,549
	Balance	(2,875,197)	(1,784,096)	(2,986,668)	(1,803,188)	(3,108,295)	(1,848,603)
Wood sleepers (rail & tram)	Imports	3,975	1,091	5,869	1,765	8,838	3,348
	Exports	705	11	871	22	2,732	117
Building Stone : processed	Imports	55,731	161,840	37,863	139,892	38,995	138,146
	Exports	13,108	17,642	6,272	4,330	6,521	3,524
Slate Roofing Tiles*	Imports	49,080	14,108
	Exports	5,722	563
Other Slate Products*	Imports	529	7,853
	Exports	314	1,410
Slate Products*	Imports	55,320	16,970	55,198	15,855
	Exports	4,539	2,875	3,397	3,084
Portland Cement	Imports	0	52,246	0	48,736	0	44,297
	Exports	2,864	1,313	2,805	2,676	3,874	1,377
Other Cements	Imports	7,527	43,142	6,927	54,605	5,099	38,520
	Exports	24,962	10,134	25,980	11,981	22,938	17,455
Steel Sheet Piling	Imports	54,249	7,278	41,698	9,878	58,791	5,622
	Exports	4,942	11,284	9,067	9,500	5,496	8,901
Ready-Mixed Concrete	Imports	791	31	22	14	2	32
	Exports	2,699	679	2,704	333	2,983	135
Concrete Reinforcing Bars	Imports	78,993	7,850	128,957	6,844	140,790	12,976
	Exports	51,917	8,334	45,739	1,232	37,343	18,438
Mortars	Imports	7,143	215	8,695	156	10,008	204
	Exports	2,620	1,138	2,741	6,195	2,230	2,545
Clay Bricks	Imports	19,302	475	22,321	597	23,034	1,015
	Exports	2,404	757	2,381	460	3,500	608
Clay Roofing Tiles	Imports	6,827	2,290	7,511	1,378	11,208	957
	Exports	119	470	91	115	101	91
Clay Pipes	Imports	19	207	42	217	245	368
	Exports	1,860	1,611	1,942	2,181	1,178	2,353
Other Clay Products	Imports	2,977	2,249	4,103	1,966	4,131	1,220
	Exports	1,396	1,792	2,057	1,509	1,396	1,306
Concrete Blocks & Bricks	Imports	4,054	315	6,594	872	6,687	1,774
	Exports	8,215	988	7,698	1,722	6,683	1,196
Concrete Roofing Tiles*	Imports	4,971	46
	Exports	2,796	154
Other Concrete Tiles & Paving*	Imports	11,271	2,026
	Exports	11,752	1,843
Concrete Tiles and Pavings*	Imports	17,910	1,654	15,512	2,606
	Exports	13,056	422	10,705	1,149
Prefabricated Concrete Products	Imports	23,679	5,132	19,446	1,069	22,826	311
	Exports	11,631	760	3,823	610	3,028	1,049
Concrete Pipes	Imports	17,487	27,999	29,399	32,027	22,852	28,810
	Exports	10,996	13,342	11,791	14,788	10,655	14,572

Current Prices (£'000)

2013		2014		2015			
EU	Non-EU	EU	Non-EU	EU	Non-EU		
6,552,230	4,256,011	6,772,329 r	4,704,700 r	6,737,107 r	4,993,687 r	Imports	All Products & Components
3,089,730	2,204,301	3,181,225 r	2,334,258 r	3,147,277 r	2,346,145 r	Exports	
(3,462,500)	(2,051,709)	(3,591,104) r	(2,370,442) r	(3,589,829) r	(2,647,543) r	Balance	
5,442	4,211	7,102	2,818	7,264	2,656	Imports	Wood sleepers (rail & tram)
495	85	2	63	46	40	Exports	
42,220	144,602	36,183 r	145,802	36,059 r	153,502	Imports	Building Stone : processed
6,699	4,230	10,034 r	6,667	16,879 r	5,759	Exports	
..	Imports	Slate Roofing Tiles*
..	Exports	
..	Imports	Other Slate Products*
..	Exports	
58,034	16,597	57,964 r	18,230	53,354	18,817	Imports	Slate Products*
6,098	2,635	5,864 r	2,827	4,727	3,461	Exports	
0	54,033	0	82,041 r	0	86,242 r	Imports	Portland Cement
4,109	1,246	4,366	658	5,414	906	Exports	
3,866	46,903	4,932	48,922 r	3,819	56,915 r	Imports	Other Cements
25,515	13,275	23,172 r	12,600 r	18,274	13,797 r	Exports	
57,149	6,928	80,548 r	6,965	65,883 r	11,207	Imports	Steel Sheet Piling
7,072	12,439	12,875 r	15,195	12,755 r	18,888	Exports	
71	168	324 r	17	138	21	Imports	Ready-Mixed Concrete
2,081	64	1,340	68	1,673	79	Exports	
122,792	54,886	118,896 r	121,034 r	78,651	119,186	Imports	Concrete Reinforcing Bars
38,325	11,497	22,579 r	2,482	31,509 r	4,275	Exports	
15,189	625	9,896 r	841	9,287	841	Imports	Mortars
2,290	3,344	2,382 r	1,473	3,975 r	1,751	Exports	
35,187	527	77,004 r	627	63,591	877	Imports	Clay Bricks
2,851	377	3,054	317	3,867	670	Exports	
10,955	1,201	13,572 r	2,567	15,655	3,197	Imports	Clay Roofing Tiles
73	145	72	281	209	65	Exports	
885	38	4,418	147	865	178	Imports	Clay Pipes
1,104	2,904	720	3,141	721	2,829	Exports	
5,122	1,762	6,091	2,759	4,662	3,078	Imports	Other Clay Products
1,167	565	1,064 r	950	1,680	739	Exports	
11,955	1,516	12,008 r	2,498	9,440	2,760	Imports	Concrete Blocks & Bricks
5,496	1,808	5,068 r	1,181	4,192	1,143	Exports	
..	Imports	Concrete Roofing Tiles*
..	Exports	
..	Imports	Other Concrete Tiles & Paving*
..	Exports	
14,109	3,681	14,771 r	5,471	17,437	6,289	Imports	Concrete Tiles and Pavings*
10,168	1,262	10,578	1,327	8,218	1,209	Exports	
32,733	2,748	44,974 r	2,365	67,545	5,468	Imports	Prefabricated Concrete Products
1,481	2,237	1,719	1,345	861	420	Exports	
26,212	33,981	41,301 r	44,378	50,470	55,492	Imports	Concrete Pipes
21,176	14,732	24,355 r	13,470	25,528 r	12,790	Exports	

* Due to changes to in European Commission product classifications Slate Roofing Tiles and Other Slate Products have been combined. Similarly, Concrete Roofing Tiles and Other Concrete Tiles and Pavings have been combined.

EXTERNAL TRADE

Table 15 : Value of EU and Non-EU Trade in Selected Materials and Components for Constructional Use : Imports (cif) & Exports (fob)

United Kingdom		Current Prices (£'000)					
		2010		2011		2012	
		EU	Non-EU	EU	Non-EU	EU	Non-EU
Products & Components (continued)							
Structural Units (steel)	Imports	478,334	125,803	497,719	150,298	308,180	21,264
	Exports	262,853	224,038	228,087	244,702	92,917	72,302
Structural Units (aluminium)	Imports	155,455	22,742	211,848	24,017	202,607	43,164
	Exports	33,433	21,538	30,194	31,030	31,477	29,699
Steel Tubes & Hollow Sections	Imports	66,984	63,972	68,973	85,147	70,213	91,773
	Exports	65,276	43,226	84,362	44,227	70,576	36,999
Bituminous Roofing Felt*	Imports	38,686	1,149
	Exports	1,538	1,207
Other Asphalt products*	Imports	9,031	1,718
	Exports	4,296	10,178
Asphalt Products*	Imports	51,141	3,280	54,460	2,966
	Exports	7,795	10,276	6,312	8,851
Mineral Insulating Materials	Imports	66,716	14,345	69,006	14,470	70,535	16,578
	Exports	85,363	61,066	93,682	71,174	87,163	79,429
Glass Fibre**	Imports	65	316	100	501
	Exports	32	1,043	53	2,617
Fibre Cement Products	Imports	29,129	1,891	30,399	4,685	29,521	7,683
	Exports	5,019	830	7,459	1,740	8,135	999
Building Plasters ¹	Imports
	Exports
Plasters ¹	Imports	13,041	779	10,728	927	9,814	1,815
	Exports	5,986	1,920	6,943	2,225	6,178	3,022
Plasterboard	Imports	14,908	99	18,551	422	15,333	201
	Exports	12,417	495	12,129	393	11,284	1,365
Copper Pipes	Imports	177,020	64,097	166,050	61,999	149,886	58,789
	Exports	87,207	59,240	96,897	45,872	72,113	46,182
Lead Pipes & Fittings**	Imports	146	3
	Exports	0	242
Zinc Pipes & Fittings*	Imports	523	234
	Exports	442	472
Other Zinc Building Products*	Imports	4,838	8,162
	Exports	17,907	8,623
Zinc Building Products*	Imports	5,801	7,133	7,188	7,261
	Exports	0	24,595	0	35,406
Plastic Pipes	Imports	74,423	31,244	82,695	31,564	78,452	29,704
	Exports	86,799	62,589	89,680	66,968	79,340	84,575
Other Plastic Building Products	Imports	96,440	51,830	112,338	44,791	106,719	46,337
	Exports	82,877	27,400	95,665	34,076	73,049	31,774
Builders Ironmongery	Imports	132,446	179,871	130,421	184,573	129,951	207,942
	Exports	73,669	38,522	80,802	47,237	76,332	46,630
Nails & Screws	Imports	29,022	37,844	28,102	36,794	22,835	38,277
	Exports	6,384	2,565	7,824	3,362	5,537	1,958
Mastics, Putty	Imports	121,606	21,824	131,884	20,018	143,038	21,579
	Exports	56,400	58,949	64,568	75,182	55,254	72,817
Paints & Varnishes	Imports	318,696	57,677	350,485	52,825	369,910	50,299
	Exports	348,729	203,565	407,382	215,086	401,416	228,605

¹ From 2010 onwards the Plasters category will contain Building Plaster and Other Plasters, as Building Plasters data is no longer collected

Current Prices (£'000)

2013		2014		2015			
EU	Non-EU	EU	Non-EU	EU	Non-EU		
319,035	41,875	209,811 r	55,347	193,880 r	48,783	Imports	Structural Units (steel)
113,463	89,040	110,173 r	102,788	86,578	101,369	Exports	
219,067	35,307	232,703 r	42,707	197,552 r	31,910	Imports	Structural Units (aluminium)
31,432	37,904	27,203 r	50,179	27,415	45,422	Exports	
71,286	63,618	76,961 r	87,392	64,357 r	62,691	Imports	Steel Tubes & Hollow Sections
69,583	27,615	73,784 r	39,836	60,781 r	33,914	Exports	
..	Imports	Bituminous Roofing Felt*
..	Exports	
..	Imports	Other Asphalt products*
..	Exports	
60,167	3,504	60,732 r	4,900	56,332	5,839	Imports	Asphalt Products*
6,458	4,835	5,526	6,572	4,286	7,403	Exports	
65,833	18,842	71,249 r	36,041	70,963 r	28,580	Imports	Mineral Insulating Materials
91,957	69,287	113,117 r	73,084	93,613	57,468	Exports	
..	Imports	Glass Fibre**
..	Exports	
39,139	9,636	52,107 r	11,737	47,397	16,804	Imports	Fibre Cement Products
6,851	881	5,077 r	613	6,137	728	Exports	
..	Imports	Building Plasters1
..	Exports	
7,598	1,430	9,914	1,883	7,992	1,321	Imports	Plasters1
4,777	2,637	4,832	3,202	5,569 r	2,356	Exports	
14,357	207	17,746	482	26,471	2,567	Imports	Plasterboard
11,799	674	11,316 r	550	10,278	617	Exports	
153,743	60,170	166,486 r	62,354	169,718	62,475	Imports	Copper Pipes
64,708	61,094	62,951 r	57,362	39,733	58,304	Exports	
..	Imports	Lead Pipes & Fittings**
..	Exports	
..	Imports	Zinc Pipes & Fittings*
..	Exports	
..	Imports	Other Zinc Building Products*
..	Exports	
6,453	7,666	8,100 r	7,882	9,055 r	8,808	Imports	Zinc Building Products*
0	25,914	6,111 r	20,665 r	18,721	14,315	Exports	
89,926	37,253	99,382 r	38,816	94,981 r	40,630	Imports	Plastic Pipes
86,659	75,120	75,836 r	81,026 r	70,448	78,772	Exports	
118,590	52,902	133,560 r	60,291	130,498 r	75,003	Imports	Other Plastic Building Products
78,622	34,178	88,206 r	33,855	85,346 r	39,428	Exports	
133,126	194,087	141,026 r	205,799	153,169 r	218,330 r	Imports	Builders Ironmongery
117,924	90,643	75,063 r	73,908	81,028 r	57,932	Exports	
36,381	35,691	28,737 r	43,711	27,648	40,713	Imports	Nails & Screws
6,466	1,694	6,089	1,568	6,553	1,470	Exports	
155,920	18,799	153,954 r	18,959	162,728	18,209	Imports	Mastics, Putty
57,028	73,807	63,599 r	76,526	63,002 r	74,912	Exports	
376,793	62,569	387,876 r	51,935	382,689 r	54,854	Imports	Paints & Varnishes
410,787	237,341	418,160 r	251,607	384,141 r	223,121 r	Exports	

* Due to changes to in European Commission product classifications Bituminous Roofing Felt and Other Asphalt products have been combined. Similarly, Zinc Pipes & Fittings and Other Zinc Building Products have been combined.

** Data for Lead Pipes and Fittings and Glass Fibre are no longer collected.

EXTERNAL TRADE

Table 15 : Value of EU and Non-EU Trade in Selected Materials and Components for Constructional Use : Imports (cif) & Exports (fob)

United Kingdom		Current Prices (£'000)					
		2010		2011		2012	
		EU	Non-EU	EU	Non-EU	EU	Non-EU
Products & Components (continued)							
Unglazed Ceramic Tiles	Imports	51,426	5,125	55,734	8,131	53,456	8,993
	Exports	1,950	880	1,829	988	2,203	1,271
Glazed Ceramic Tiles	Imports	148,042	76,516	145,923	67,064	136,508	73,973
	Exports	9,718	5,738	12,472	6,312	12,359	5,257
Ceramic Sanitaryware	Imports	81,561	87,104	86,446	91,583	88,941	89,087
	Exports	18,317	19,565	19,980	17,279	18,295	13,878
Plastic Sanitaryware	Imports	53,103	59,411	54,783	55,034	51,862	55,438
	Exports	44,905	22,981	41,455	21,126	30,379	21,251
Metal Sanitaryware	Imports	73,552	51,114	81,835	54,701	67,403	54,578
	Exports	16,119	12,156	17,082	15,562	18,716	19,852
Flat Glass	Imports	41,515	19,534	49,196	15,796	50,023	15,231
	Exports	46,604	26,572	65,046	44,115	50,978	28,483
Other Glass Products	Imports	44,428	36,654	53,207	31,795	58,903	23,979
	Exports	20,385	12,698	20,552	12,059	18,394	13,884
Wood Veneers	Imports	21,812	9,868	27,151	9,051	25,323	8,320
	Exports	734	5,090	758	6,834	457	6,885
Wood Mouldings	Imports	34,500	32,301	31,337	27,802	25,758	32,696
	Exports	8,910	750	7,838	1,138	7,403	833
Wood Block Flooring	Imports	43,815	100,579	48,184	91,733	59,275	91,272
	Exports	3,670	866	3,680	860	2,754	2,047
Other Builder's Woodwork	Imports	62,903	36,492	55,558	34,201	51,901	37,307
	Exports	8,363	5,957	8,097	8,211	6,420	7,253
Windows (wood)	Imports	96,281	15,653	106,390	12,502	104,849	8,238
	Exports	7,236	551	9,145	740	8,286	285
Doors (wood)	Imports	87,394	130,416	81,098	120,908	71,499	119,206
	Exports	15,621	1,252	11,387	1,936	12,572	3,236
Doors & Windows (steel)	Imports	26,497	9,491	23,849	11,582	27,736	10,915
	Exports	8,412	10,809	8,524	10,472	8,974	15,007
Doors & Windows (aluminium)	Imports	62,247	10,118	59,474	11,052	59,331	12,638
	Exports	16,284	3,666	15,783	8,358	14,707	3,822
Doors & Windows (plastic)	Imports	32,516	13,820	28,435	24,302	26,222	30,368
	Exports	42,334	2,099	36,931	2,492	27,493	2,639
Cork Tiles	Imports	2,510	441	3,729	288	2,569	431
	Exports	776	870	875	1,264	806	1,029
Linoleum Floor Coverings	Imports	188,491	90,574	222,976	94,874	217,146	89,713
	Exports	121,253	107,577	127,717	105,945	117,334	97,265
Wallpaper	Imports	49,739	6,963	52,098	6,271	53,569	5,477
	Exports	40,208	42,732	42,151	43,722	39,999	36,112
Textile Wall Coverings	Imports	2,883	441	2,265	741	2,478	828
	Exports	273	337	403	284	378	243

Current Prices (£'000)

2013		2014		2015			
EU	Non-EU	EU	Non-EU	EU	Non-EU		
							Products & Components (continued)
66,211	10,409	61,763 r	11,432	57,479	12,383	Imports	Unglazed Ceramic Tiles
1,953	692	2,149	1,025	2,125	1,585	Exports	
145,468	62,569	133,349 r	66,330	134,964 r	68,149	Imports	Glazed Ceramic Tiles
10,934	7,162	10,959 r	6,146	7,415	8,451	Exports	
85,410	92,824	97,077 r	102,295	94,228 r	107,166	Imports	Ceramic Sanitaryware
20,137	13,745	19,265 r	15,638	17,856	11,531	Exports	
59,995	60,762	68,325 r	66,073	70,157 r	67,825	Imports	Plastic Sanitaryware
28,244	22,410	29,507 r	20,279	27,515 r	19,522	Exports	
66,539	58,717	62,148 r	66,722	62,375 r	70,849	Imports	Metal Sanitaryware
19,757	17,682	17,388 r	17,881	17,617	20,532	Exports	
35,849	13,018	36,902 r	17,909	38,103	12,701	Imports	Flat Glass
30,849	14,349	24,110 r	4,611	21,596	3,721	Exports	
48,954	33,559	51,649 r	23,424	53,058 r	29,371	Imports	Other Glass Products
17,174	11,188	16,890 r	9,646	17,486	9,615	Exports	
27,274	8,011	26,520 r	6,566	22,229	7,535	Imports	Wood Veneers
494	4,961	1,285	4,748	841	3,750	Exports	
26,605	41,019	34,597 r	34,722	31,047	36,980	Imports	Wood Mouldings
7,167	817	8,301	687	8,671 r	1,115	Exports	
60,060	77,323	70,332 r	88,506	79,622 r	97,788	Imports	Wood Block Flooring
3,142	2,056	4,393 r	1,778	5,313	2,016	Exports	
62,721	37,265	62,828 r	38,193	63,629	54,820	Imports	Other Builder's Woodwork
5,731	9,103	5,859	10,713	7,536	6,351	Exports	
112,793	7,235	131,894 r	6,524	144,577	6,449	Imports	Windows (wood)
8,832	632	10,759 r	721	11,344	1,237	Exports	
67,929	134,606	75,937 r	133,992	79,454	149,322	Imports	Doors (wood)
10,901	2,717	14,598 r	1,807	14,799	2,342	Exports	
29,544	11,924	32,920 r	14,725	31,776	15,122	Imports	Doors & Windows (steel)
10,695	15,352	8,049 r	18,953	10,928 r	18,525	Exports	
63,359	8,489	62,964 r	8,756	65,201	11,699	Imports	Doors & Windows (aluminium)
12,802	4,175	11,970 r	6,280	13,889	7,674	Exports	
19,320	36,036	20,929 r	41,044	20,369	43,392	Imports	Doors & Windows (plastic)
27,071	3,911	29,861 r	3,314	35,693	3,251	Exports	
2,277	639	2,378	595	978 r	602	Imports	Cork Tiles
804	1,531	852	1,367	902	1,553	Exports	
242,510	99,630	234,196 r	102,185	250,778 r	113,423	Imports	Linoleum Floor Coverings
120,544	98,362	132,523 r	98,865	122,941 r	98,678	Exports	
52,656	7,878	55,871 r	9,015	54,514	12,568	Imports	Wallpaper
42,071	41,240	41,233 r	38,240	38,782 r	35,310	Exports	
3,801	875	3,529	1,636	3,084 r	2,050	Imports	Textile Wall Coverings
577	289	639	310	446 r	339	Exports	

EXTERNAL TRADE

Table 15 : Value of EU and Non-EU Trade in Selected Materials and Components for Constructional Use : Imports (cif) & Exports (fob)

United Kingdom		Current Prices (£'000)					
		2010		2011		2012	
Products & Components (continued)		EU	Non-EU	EU	Non-EU	EU	Non-EU
Fitted Kitchens (assembled)	Imports	102,928	8,417	73,415	6,591	75,751	5,351
	Exports	8,140	7,981	8,302	7,427	6,424	13,255
Prefabricated Buildings (wood)	Imports	31,065	1,621	31,339	3,570	27,442	3,374
	Exports	6,355	4,191	6,535	1,855	5,081	5,137
Prefabricated Buildings (steel)	Imports	17,694	12,089	23,066	14,299	15,805	10,861
	Exports	18,701	18,458	27,182	22,887	36,957	20,798
Prefabricated Buildings (other)	Imports	11,760	22,563	6,831	23,032	10,616	25,802
	Exports	8,623	9,020	5,923	13,158	11,631	16,305
Mobile Homes	Imports	1,898	267	1,159	271	729	1,460
	Exports	3,121	545	1,770	657	7,085	1,077
Taps & Valves	Imports	154,888	167,319	156,177	178,179	140,151	198,862
	Exports	26,815	46,387	28,458	40,667	26,887	61,471
Pumps (circulating)	Imports	20,394	1,485	21,251	808	26,349	1,386
	Exports	22,272	9,807	19,439	2,715	10,872	1,784
Central Heating Boilers	Imports	520,904	33,548	520,804	51,494	482,649	41,130
	Exports	54,484	20,349	50,739	27,113	46,271	25,879
Radiators	Imports	86,982	102,810	80,905	97,773	70,858	102,314
	Exports	27,814	3,271	24,604	3,665	32,143	4,687
Water Heaters	Imports	41,706	42,921	42,997	47,679	37,656	50,342
	Exports	32,951	30,085	34,450	33,222	27,962	31,387
Space Heaters	Imports	43,703	93,026	40,938	107,678	36,282	63,898
	Exports	22,803	9,200	22,104	10,822	14,371	8,900
Fan Systems	Imports	107,680	64,480	123,877	66,564	116,974	61,410
	Exports	66,363	42,977	74,776	49,523	69,183	68,664
Air Conditioning Equipment	Imports	273,026	254,830	296,232	279,923	285,111	236,818
	Exports	200,677	69,435	184,798	77,760	163,210	91,306
Air Purifying Equipment	Imports	35,605	17,614	44,191	22,359	46,295	24,652
	Exports	79,180	69,458	94,171	89,070	92,621	99,642
Hand Driers	Imports	610	8,376	358	10,137	666	9,681
	Exports	639	1,267	938	1,012	850	910
Meters	Imports	15,817	12,884	34,088	9,952	51,562	10,517
	Exports	26,921	25,903	46,280	26,237	49,202	25,843
Plugs & Sockets	Imports	120,003	183,119	135,794	193,415	141,231	197,851
	Exports	132,788	49,576	158,558	56,096	160,598	56,230
Electrical Wires	Imports	626,039	587,430	646,481	700,406	605,286	776,006
	Exports	294,456	221,088	327,413	244,562	280,789	231,288
Electrical Insulators	Imports	22,213	8,382	16,760	9,788	23,337	10,455
	Exports	16,543	16,032	15,067	15,418	13,252	15,207
Lamps & Fittings	Imports	234,011	281,841	239,470	281,481	249,548	349,372
	Exports	132,962	83,855	160,383	106,597	157,807	129,503
Fire & Security Alarms	Imports	76,930	74,713	62,801	59,861	76,587	65,143
	Exports	117,530	90,750	113,007	60,472	109,467	72,709
Lifts & Escalators	Imports	86,978	9,995	84,454	18,379	95,439	22,084
	Exports	9,100	5,527	11,623	9,598	12,226	9,520

Data for Lifts & Escalators has been revised following the discovery of an error. These revisions were first published in the February 2012 edition of this bulletin (published on 11 January 2012). Data for Table 14 has not been revised as these data were not discovered to have the same error.

Current Prices (£'000)

2013		2014		2015			
EU	Non-EU	EU	Non-EU	EU	Non-EU		Products & Components (continued)
75,108	7,871	67,494 r	6,292	66,921 r	8,174	Imports	Fitted Kitchens (assembled)
14,698	12,335	16,931 r	8,045	14,238	8,647	Exports	
36,409	3,412	46,199	1,382	62,238	1,773	Imports	Prefabricated Buildings (wood)
1,443	1,357	3,024 r	974	1,694	3,745	Exports	
31,717	10,976	32,091 r	13,880	35,960 r	23,268	Imports	Prefabricated Buildings (steel)
26,901	23,628	20,321 r	16,660	24,829	13,548	Exports	
11,576	16,029	24,755 r	19,454	14,323	24,450	Imports	Prefabricated Buildings (other)
5,897	21,115	10,029 r	25,001	5,791 r	21,197	Exports	
1,107	810	599	195	33	256	Imports	Mobile Homes
7,332	3,176	8,528 r	1,362	7,717	3,068	Exports	
153,687	211,625	163,323 r	208,702	170,236 r	226,741	Imports	Taps & Valves
27,520	68,123	33,553 r	63,886 r	32,451 r	73,886	Exports	
29,579	2,724	35,241 r	1,965	36,339	1,970	Imports	Pumps (circulating)
4,409	737	5,232	1,663	3,910	8,856	Exports	
565,173	52,813	556,939 r	33,626	541,898 r	42,132	Imports	Central Heating Boilers
49,119	22,767	42,998 r	20,438	53,175	22,289	Exports	
73,396	112,787	63,822 r	117,455	53,765	130,320	Imports	Radiators
34,268	4,937	36,418 r	4,627	35,958	4,970	Exports	
52,596	63,238	54,131 r	68,840	59,225 r	68,672	Imports	Water Heaters
30,908	31,224	28,011 r	30,517	31,670	34,138	Exports	
49,423	79,836	43,121 r	82,980	47,281 r	82,818	Imports	Space Heaters
15,062	6,814	21,395 r	8,825	21,477 r	10,014	Exports	
139,705	64,451	149,961 r	73,333	157,117 r	88,244	Imports	Fan Systems
76,079	67,933	82,564 r	68,697 r	75,563 r	67,556	Exports	
306,760	228,134	278,286 r	255,996	282,707	235,380	Imports	Air Conditioning Equipment
156,497	82,050	181,836 r	87,688	172,095	112,851	Exports	
47,430	18,664	62,857 r	20,093	57,333 r	21,117	Imports	Air Purifying Equipment
119,034	104,354	115,700 r	107,575 r	120,381 r	109,210	Exports	
1,208	9,354	904	11,030	874	11,256	Imports	Hand Driers
757	474	823 r	753	1,071	919	Exports	
39,537	10,105	38,319	21,373	54,272 r	43,327	Imports	Meters
48,261	27,164	45,657	30,790	43,142	30,798	Exports	
170,718	218,471	189,270 r	239,297	192,840 r	248,120	Imports	Plugs & Sockets
195,603	64,461	199,800 r	90,320 r	207,778	99,035	Exports	
666,817	824,946	685,087 r	888,545	696,795 r	858,781 r	Imports	Electrical Wires
310,042	237,302	337,594 r	306,102	356,427 r	328,762	Exports	
22,730	9,727	33,921 r	9,224	29,031 r	8,517	Imports	Electrical Insulators
14,883	11,488	13,868 r	12,469	14,647	12,850	Exports	
315,567	387,779	353,356 r	459,397	328,720 r	546,863	Imports	Lamps & Fittings
155,148	131,578	145,745 r	137,623	189,285 r	139,953	Exports	
81,542	83,725	86,813 r	94,150	111,815 r	131,516	Imports	Fire & Security Alarms
114,162	80,323	150,603 r	90,802	156,775 r	104,559 r	Exports	
91,836	17,786	99,402 r	19,129	100,212 r	25,557	Imports	Lifts & Escalators
7,116	23,085	13,713 r	19,044	9,351	11,842	Exports	

Data for Lifts & Escalators has been revised following the discovery of an error. These revisions were first published in the February 2012 edition of this bulletin (published on 11 January 2012). Data for Table 14 has not been revised as these data were not discovered to have the same error.



© Crown copyright 2016

This publication is licensed under the terms of the Open Government Licence v3.0 except where otherwise stated. To view this licence, visit nationalarchives.gov.uk/doc/open-government-licence/version/3 or write to the Information Policy Team, The National Archives, Kew, London TW9 4DU, or email: psi@nationalarchives.gsi.gov.uk. Where we have identified any third party copyright information you will need to obtain permission from the copyright holders concerned.

This publication available from www.gov.uk/beis

Contact us if you have any enquiries about this publication, including requests for alternative formats, at:

Department for Business, Energy and Industrial Strategy
1 Victoria Street
London SW1H 0ET
Tel: 020 7215 1953

Email: MaterialStats@beis.gov.uk

BEIS / 16 / cs3