



7 November 2013

United Kingdom Egg Statistics – Quarter 3, 2013

These National Statistics on UK egg packing, processing and trade were released on 7 November 2013 according to the arrangements approved by the UK Statistics Authority.

This quarterly notice will be next updated at 09:30 on 6 February 2013.

Contents

Section 1	Commentary	page 2
Section 2	UK Egg Packing and Processing Statistics	pages 3-5
Section 3	UK Egg Trade	page 6
Section 4	Methodology, notes and revisions policy	page 7

Key results

This release shows quarterly information on egg packing, usage and prices. It also includes monthly information on the trade in eggs and egg products. The key results are given below:

- 6,713 thousand cases of eggs were packed during the third quarter of 2013. Free range accounted for 44 per cent of all eggs packed, the same as quarter three 2012. Enriched cage accounted for 50 per cent compared to 49 per cent in quarter three 2012.
- The volume of eggs processed during the third quarter of 2013 totalled 24 thousand tonnes. The production of liquid egg and egg products increased compared to the previous quarter.
- The average price paid by packers to producers for all eggs packed during quarter three 2013 was 89.2 pence per dozen, compared with 87.4 pence per dozen during quarter three 2012.

This release and associated timeseries are available online:

<https://www.gov.uk/government/publications/egg-statistics>

Enquiries to: Leigh Riley, Department for Environment, Food and Rural Affairs, Room 301, Foss House, King Pool, 1 - 2 Peasholme Green, York YO1 7PX. Tel:++ 44 (0)1904 455095 email:leigh.riley@defra.gsi.gov.uk

A National Statistics publication. National Statistics are produced to high professional standards. They undergo regular quality assurance reviews to ensure that they meet customer needs. They are produced free from any political interference. For general enquiries about National Statistics, contact the National Statistics Public Enquiry Service: tel. 0845 601 3034 email info@statistics.gov.uk. You can also find National Statistics on the internet at www.statistics.gov.uk.

Section 1: Commentary

UK egg packing, price and processing statistics

- Of the total 6.7 million cases of eggs packed by packing stations in the UK, 5 million (74 per cent) were packed in England and Wales. Throughput has been steadily increasing recently to a peak of 6.8 million cases in Q2 2013. The latest data shows a slight fall in throughput as a result of a smaller laying flock.
- Broken down by type, eggs from enriched cages accounted for 50 per cent of the total throughput whilst free range eggs accounted for 44 per cent. Barn and organic eggs together accounted for 5 per cent.
- The weighted average 'packer to producer' price of all eggs, as shown in Table 2.3, was 89.2p per dozen. This was an increase of 2.1 per cent compared to the same period in 2012.
- The number of eggs bought by UK egg processors totalled 1.09 million cases (equating to almost 24 thousand tonnes), a fall of 11 per cent on the same period in 2012, as shown in Table 2.4.
- Table 2.5 shows that UK egg processors produced 24 thousand tonnes of egg products, a rise of 12 per cent on the same period in 2012.
- Liquid egg accounted for 63 per cent of the total production and shows a slight increase on the previous quarter. Production of other egg products also increased by 9 per cent on the previous quarter, as shown in Table 2.5.

Egg trade data (sourced from HM Revenue and Customs)

- The latest trade data from HMRC shows that during the period Jan-Aug 2013, the UK imported 1,095 thousand cases and exported 192 thousand cases of shell eggs (Table 3.1). The August figures show a 16 per cent decrease in imports on the same period last year to 150 thousand cases and the export figures for August also show a decrease of 27 per cent to 23 thousand cases on the same period last year.
- UK imports of egg products for the period Jan-Aug 2013 stood at 2.2 million cases (Table 3.2), a rise of 7.4 per cent on the same period last year. Exports of egg products for the same period totalled 460 thousand cases pending further investigation by HMRC.

Section 2 (a): UK egg packing and price statistics

The tables in this section show quarterly information on UK egg packing and processing. Q1 refers to the period January to March, Q2 refers to the period April to June etc.

The packing station figures include throughput of both graded and ungraded eggs. The weighted average packer to producer prices, as shown in table 2.3, are weighted according to the volume of throughput of each egg type by each packing station. From 1st January 2012, egg producers were legally required to house laying hens in enriched colony systems only.

Table 2.1: UK Packing Station Egg Throughput by Country

Period		E&W	Scot	NI	UK	thousand cases % change on previous year
2011	Q1	5,102	1,062	690	6,854	5.5%
	Q2	5,249	958	673	6,880	2.9%
	Q3	5,040	898	693	6,632	-4.2%
	Q4	4,974	926	655	6,555	-5.9%
	Total	20,365	3,845	2,711	26,921	-0.5%
2012	Q1	4,875	1,003	628	6,506	-5.1%
	Q2	4,751	908	660	6,319	-8.2%
	Q3	4,836	955	709	6,501	-2.0%
	Q4	4,966	967	663	6,596	0.6%
	Total	19,428	3,834	2,660	25,922	-3.7%
2013	Q1	5,088	942	693	6,723	3.3%
	Q2	5,119	975	725	6,819	7.9%
	Q3	4,999	936	778	6,713	3.3%

Table 2.2: UK Packing Station Egg Throughput by Egg Production Type

Period		Enriched cage	Barn	Free Range	Organic	Total	thousand cases
2011	Q1	3,343	291	3,007	212	6,854	
	Q2	3,305	277	3,055	243	6,880	
	Q3	3,300	248	2,875	209	6,632	
	Q4	3,180	259	2,943	174	6,555	
	Total	13,128	1,075	11,879	838	26,921	
2012	Q1	3,106	229	3,004	167	6,506	
	Q2	3,046	222	2,885	167	6,319	
	Q3	3,206	238	2,888	169	6,501	
	Q4	3,238	259	2,939	159	6,596	
	Total	12,596	948	11,716	662	25,922	
2013	Q1	3,339	250	2,986	148	6,723	
	Q2	3,426	222	3,017	155	6,819	
	Q3	3,381	199	2,973	159	6,713	

Table 2.3: Average Prices Paid by UK Packers to Producers (a)

pence per dozen

Period		Enriched cage	Barn	Free Range	Organic	All Eggs	% change on previous year
2011	Q1	53.5	73.4	83.0	130.4	69.7	-6.9%
	Q2	52.2	72.4	82.2	129.4	69.1	-0.8%
	Q3	54.0	72.8	83.2	128.4	69.7	4.9%
	Q4	56.1	72.0	84.0	138.3	71.4	2.6%
	Total	53.9	72.6	83.1	131.6	70.0	-0.2%
2012	Q1	65.3	c	89.8	c	79.1	13.5%
	Q2	74.4	c	99.7	c	88.4	28.0%
	Q3	73.4	c	99.4	c	87.4	25.4%
	Q4	75.8	c	101.7	c	89.7	25.7%
	Total	72.2	c	97.7	c	86.2	23.2%
2013	Q1	77.5	c	105.6	c	92.2	16.6%
	Q2	75.4	c	105.5	c	91.0	2.9%
	Q3	72.9	c	104.3	c	89.2	2.1%

'c' confidential

(a) From 2012 the price is an average across the survey period rather than an end of period weekly spot price and weighted according to the volumes packed by each packing station. Bonus payments paid are included.

Section 2 (b): UK egg processing statistics

Table 2.4: Number of Eggs Bought by UK Egg Processors

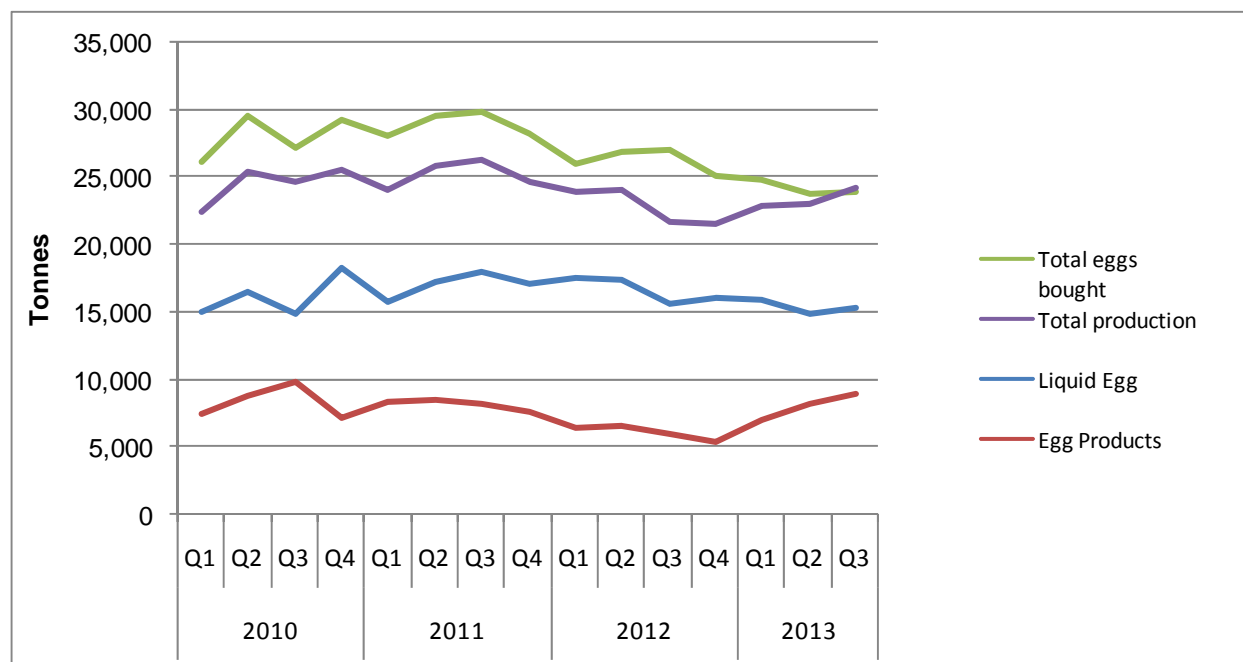
Period		Thousand cases	Tonnes	% change year on year
2011	Q1	1,276	28,076	7.7%
	Q2	1,341	29,497	0.2%
	Q3	1,354	29,797	10.0%
	Q4	1,280	28,170	-3.3%
	Total	5,252	115,540	3.4%
2012	Q1	1,178	25,926	-7.7%
	Q2	1,223	26,900	-8.8%
	Q3	1,228	27,017	-9.3%
	Q4	1,141	25,095	-10.9%
	Total	4,770	104,938	-9.2%
2013	Q1	1,125	24,742	-4.6%
	Q2	1,080	23,769	-11.6%
	Q3	1,090	23,979	-11.2%

Table 2.5: Production of Egg Products by UK Egg Processors

Period		Liquid Egg	Egg Products		Total	% change year on year
			Hard Boiled (a)	Other Products (a)		
2011	Q1	15,690	8,300		23,990	7.1%
	Q2	17,190	8,471		25,661	1.6%
	Q3	17,943	8,231		26,174	6.4%
	Q4	17,085	7,516		24,601	-3.2%
	Total	67,908	32,518		100,426	2.8%
2012	Q1	17,447	6,393		23,840	-0.6%
	Q2	17,361	6,641		24,001	-6.5%
	Q3	15,485	6,060		21,545	-17.7%
	Q4	16,045	5,409		21,454	-12.8%
	Total	66,338	24,503		90,841	-9.5%
2013	Q1	15,785	6,964		22,749	-4.6%
	Q2	14,797	8,126		22,923	-4.5%
	Q3	15,303	8,852		24,155	12.1%

(a) Separate data for Hard Boiled Eggs and Other Products currently unavailable.

Figure 2.1: Intake and Production of Egg Products by UK Egg Processors (a)



(a) The volume of eggs processed also includes any processing carried out for external customers who supply their own eggs. This can cause the overall volume of eggs processed to be higher than the volume of eggs purchased, as in the current statistics for Q3 2013.

Section 3: UK Egg Trade

Trade figures are supplied by HM Revenue and Customs. Trade data marked as provisional may be subject to revision.

Table 3.1: UK Trade in Shell Eggs (a)

Calendar Months	Imports			12 Month Moving Totals	Exports			12 Month Moving Totals
			% change				% change	
	2012	2013	12/13		2012	2013	12/13	
January	99	151	53%	2,333	14	29	106%	284
February	107	127	19%	2,354	14	25	74%	294
March	168	164	-3%	2,350	16	20	27%	299
April	235	126	-46%	2,242	13	22	64%	307
May	252	122	-51%	2,112	15	26	70%	318
June	217	125	-42%	2,021	24	22	-6%	316
July	227	128	-44%	1,922	22	25	17%	320
August	178	150	-16%	1,893	31	23	-27%	311
September	196				29			
October	212				30			
November	194				31			
December	197				31			
Total	2,281	1,095			269	192		

(a) From 2012 comm codes changed from 04070030 to 040721000, 040729100 and 040790100, All trade data are provisional

Table 3.2: UK Trade in Egg Products (a)

Calendar Months	Imports			12 Month Moving Totals	Exports			12 Month Moving Totals
			% change				% change	
	2012	2013	12/13		2012	2013	12/13	
January	245	254	4%	3,166	8	<i>106</i>	<i>tbc</i>	<i>tbc</i>
February	221	280	27%	3,225	13	<i>90</i>	<i>tbc</i>	<i>tbc</i>
March	264	252	-4%	3,213	12	<i>73</i>	<i>tbc</i>	<i>tbc</i>
April	232	252	8%	3,233	8	<i>65</i>	<i>tbc</i>	<i>tbc</i>
May	255	310	22%	3,288	8	<i>83</i>	<i>tbc</i>	<i>tbc</i>
June	249	309	24%	3,348	10	<i>17</i>	<i>tbc</i>	<i>tbc</i>
July	306	306	0%	3,348	<i>45</i>	<i>14</i>	<i>tbc</i>	<i>tbc</i>
August	309	272	-12%	3,311	<i>63</i>	<i>13</i>	<i>tbc</i>	<i>tbc</i>
September	228				<i>67</i>			
October	313				<i>49</i>			
November	284				<i>65</i>			
December	252				<i>16</i>			
Total	3,157	2,234			363	460		

(a) Figures are based on SITCs: 025.21, 025.22 and 025.30, converted to shell egg equivalent. All trade data are provisional - Figures in italics are currently under investigation with HMRC, as they are unusually high. We recommend treating these figures with caution until this query is resolved. tbc: to be confirmed when HMRC query is resolved.

Section 4: Methodology, Notes and Revisions Policy

1. The information in this notice is used by the UK government and the EU as evidence for assessing market conditions and evaluating agricultural policy. Other users include the food and farming industry, academia and the general public. Contact details are available on the front page of this notice, for you to send feedback or ask questions about the information provided.
2. Egg Packing Statistics: Defra runs a quarterly survey of registered UK egg packing stations. It is a voluntary sample survey of 27 respondents that collects information on throughput by production type and prices of graded eggs and sales of ungraded eggs. The response rate is typically 100 per cent and the survey accounts for 75 per cent of eggs packed in the UK. The survey figures are raised up to give UK estimates using information on the number of commercial laying hens, average egg yields, average mortality rates, the proportion of UK eggs that go through packing stations. Throughput by egg type for packing stations not surveyed is calculated using data provided by packing stations responding to the survey. The raised figures are published in this statistics notice and the associated datasets. The figures in this notice therefore represent all Class A eggs passed over a grader in the UK, including seconds. The prices obtained on the survey are weighted according to the volume of eggs packed by each packing station to obtain average prices for the UK. From 2012, prices include any bonus payments paid to producers.
3. Egg processing statistics: Defra runs a quarterly survey of all registered egg processors. It is a voluntary survey of 11 respondents that collects information on the number of eggs bought by egg processors and the quantity of egg products produced. The response rate is typically 100 per cent.
4. In tables that show numbers of eggs the units used are 'thousand cases'. There are 360 eggs in one case.
5. Trade statistics: These figures come from HM Revenue and Customs, but are validated and adjusted if necessary prior to publication. The Standard Industrial Trade Classification codes used to produce each table are given in the footnotes below the tables.
6. The data are subject to a variety of validation checks which identify inconsistencies in the data. All data are cleaned prior to publication.
7. The percentage changes shown are calculated using unrounded figures. Thus any percentage changes calculated using the published (rounded) figures may not equate exactly with the changes shown.
8. The UK 12 month moving totals represent the sum of the 12 months up to and including the date indicated. They can be seen as a trend measure that is not affected by seasonality.

Revisions policy:

9. Figures in this notice are provisional and subject to revision. We will provide information about any revisions we make to previously published information in this statistics notice, and the associated datasets. Revisions could occur for various reasons, including:
 - a. if we have not received survey data from respondents we make an estimate based on their previous returns. These estimates will be replaced with actual survey data when it is received.
 - b. survey respondents occasionally supply amended figures for previous periods.
 - c. we may also revise the methodology used to raise the survey data to give UK totals.
10. **This quarter there are minor revisions to previously published data from Q1 2013 due to revised survey data, and minor revisions to previously published trade data from January 2012 due to revised HMRC data.**