



Ministry of  
**JUSTICE**

**Population in custody  
monthly tables  
June 2010  
England and Wales**

Ministry of Justice  
Statistics bulletin

Published 30 July 2010

## Population in custody June 2010 - Key points

### **Resumption of publication and use of new data source**

Publication of the monthly population in custody bulletin was suspended from August 2009 to March 2010 due to technical problems relating to the supply of data for statistical purposes. Publication of the bulletin resumed in April 2010 as announced on the MoJ website <http://www.justice.gov.uk/publications/populationincustody.htm>

Figures in the resumed bulletin are based on a new data source, consistent with the published weekly prison figures. In order to provide a consistent comparison with the previous year, data for 2009 has also been taken from the new data source, which means that these figures will not match the monthly 2009 data published previously. The total prison population given for June 2009 is 63 lower than the figure previously published.

### **Population in custody (prisons, secure training centres and secure children's homes)**

- The population in custody on 30 June 2010 was 85,400, a rise of 1,600 from a year earlier. The population in prisons was 85,000 (a rise of 1,600 from a year earlier), in Secure Training Centres (STCs) it was 270 and in Secure Children's Homes (SCHs) it was 170.

### **Population in prison**

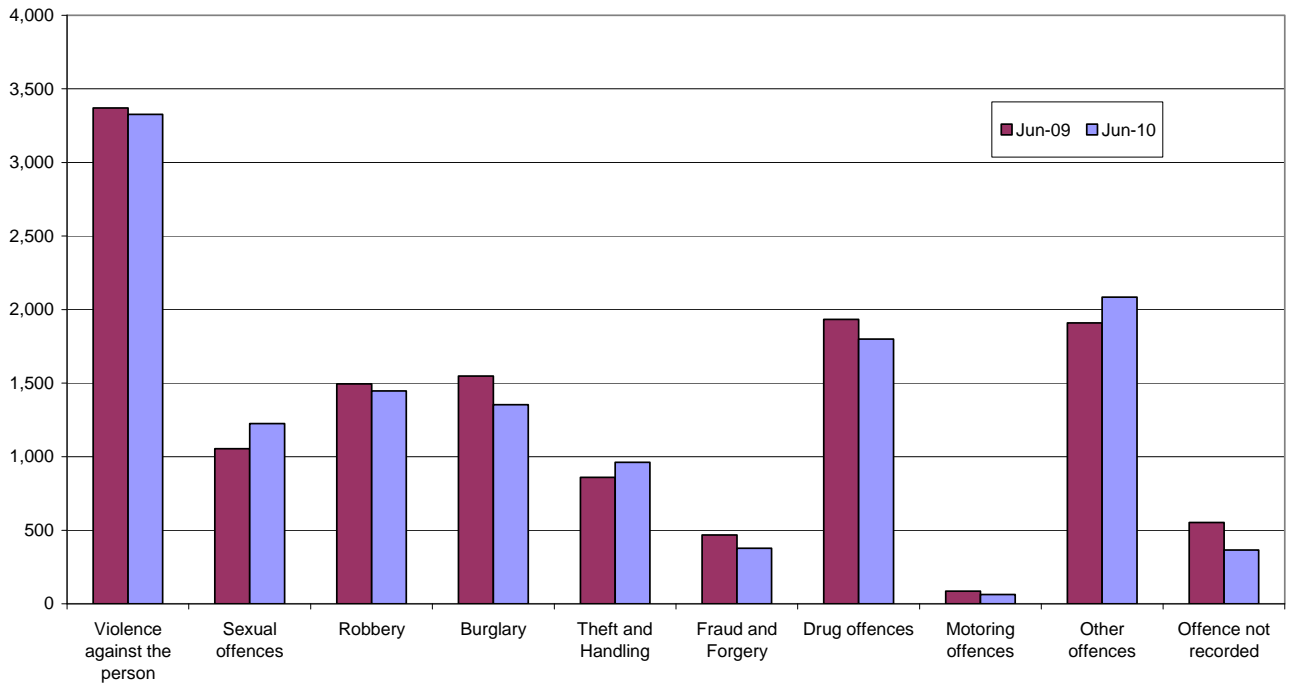
- The male prison population increased by 2 per cent (up 1,700) to 80,700 and the female prison population fell by 1 per cent (down 40) to 4,300 in June 2010 compared to June 2009.
- The adult population in prison was 73,300 at 30 June 2010, an increase of 2 per cent (up 1,500) from a year earlier. Over the same time period the number of 15 to 17 year olds fell 22 per cent (down 460) to 1,700 and the young adult prison population (see definitions) increased 6 per cent (up 570) to 10,000 at 30 June 2010.
- The remand population in prison fell 2 per cent from 13,300 in June 2009 to 13,000 in June 2010 (down 270). Within this total, the untried population fell 3 per cent (down 240) to 8,500 and the convicted unsentenced population fell 1 per cent (down 30), to 4,500.
- There were 71,000 sentenced<sup>(1)</sup> prisoners at 30 June 2010, an increase of 4 per cent from a year earlier (up 2,400). There were increases in those serving sentences of all sentence lengths except 6 months to less than 12 months, which fell by 2 per cent (down 70). The number of prisoners serving a sentence of less than 6 months rose 8 per cent between June 2009 and June 2010 (up 350) and those serving sentences of 4 years or more increased by 6 per cent (up 1,300). There was a 2 per cent rise in the number of prisoners serving a sentence of more than 12 months to less than 4 years (up 500). The number of prisoners serving indeterminate sentences (Life sentences and indeterminate sentences for public protection - IPPs) increased by 8 per cent (up 950) to reach 13,100.
- There were 5,400 recall prisoners at 30 June 2010, down 600 from a year earlier.

- The offence groups showing the largest proportionate increases and the largest proportionate decreases were similar for the remand and sentenced populations.
- Amongst the remand population the largest proportionate increases since June 2009 were for sexual offences (up 170, 16 per cent), theft and handling offences (up 100, 12 per cent) and other offences (up 180, 9 per cent). The largest proportionate falls since June 2009 were for prisoners serving sentences for motoring offences (down 20, 27 per cent), fraud and forgery (down 90, 19 per cent) and burglary (down 200, 13 per cent).
- Amongst the sentenced<sup>(1)</sup> prison population the largest proportionate increases were for theft and handling (up 720, 23 per cent), other offences (up 1,200, 19 per cent) and sexual offences (up 1,100, 14 per cent) from June 2009. The largest proportionate decreases since June 2009 were for prisoners serving sentences for fraud and forgery (down 380, 20 per cent), motoring offences (down 150, 14 per cent) and burglary (down 550, 7 per cent).
- The prison population was 109 per cent of the 'In Use CNA' (77,900) at 30 June 2010.
- On 30 June 2010, the foreign national prison population was 11,100. This includes those held under the Immigration Act 1971 (including those in the immigration removal centres Dover, Haslar and Lindholme) as well as those held on remand or serving custodial sentences.
- Jamaican nationals comprised the largest foreign national population at 30 June 2010 (940) followed by Nigeria (730), Republic of Ireland (680), Poland (640), Vietnam (600), Pakistan (440) and Somalia (430).

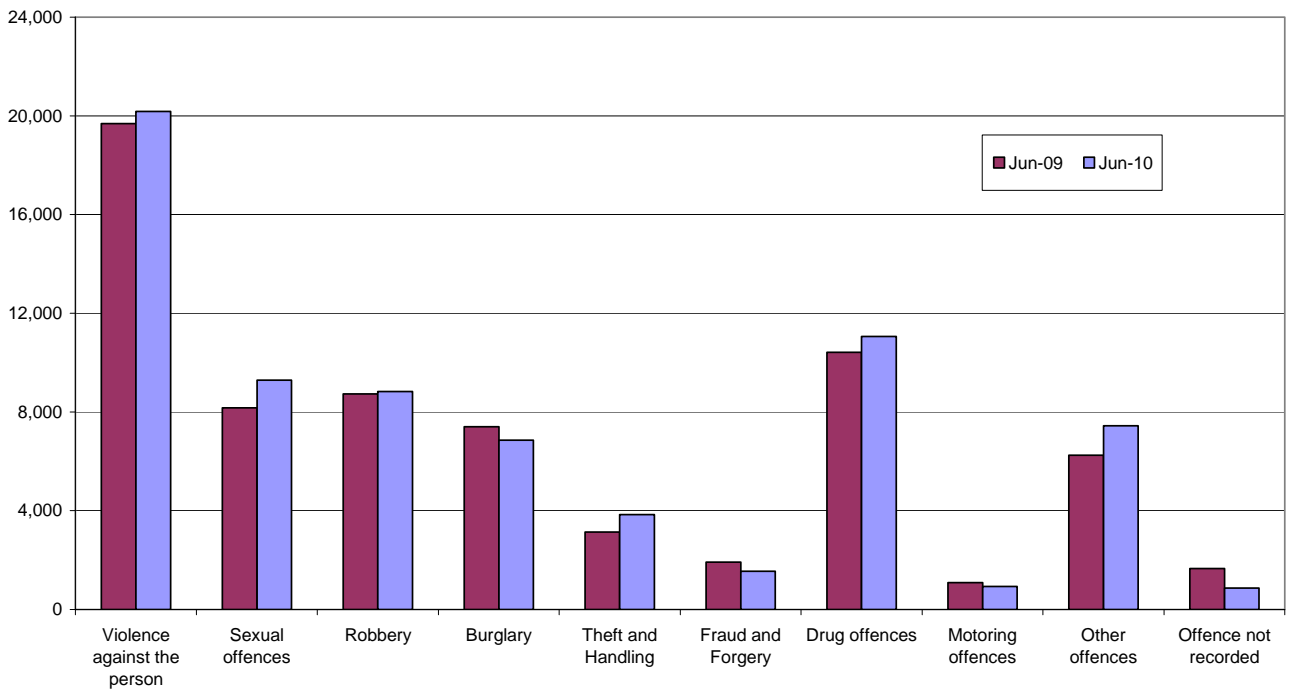
---

(1) Includes recalls and excludes fine defaulters (see Table 2)

**Figure A: Remand population by offence group**



**Figure B: Immediate custodial sentenced population by offence group**



## Notes

### Data sources and quality

The data presented in this brief are drawn from the prison administrative IT systems. Although care is taken when processing and analysing the returns, the data collected is subject to the inaccuracies inherent in any large-scale recording system. While the figures shown have been checked as far as practicable, they should be regarded as approximate and not necessarily accurate to the last whole number shown in the tables. They are fit to be used for purposes of looking at trends and for comparing the relative magnitude of components.

The prison population information is now drawn from a single prison source. Although different from the source used up to June 2009, it contains the same details for individual inmates such as date of birth, sex, religion, ethnic origin, custody type, offence, reception and discharge dates, and for sentenced prisoners, sentence length. The overall reliability of the sentence length data has increased, but in a small number of cases, sentence length data is missing and has been imputed. Sentence lengths have been imputed for around 1,400 cases in the June 2010 dataset.

As a different data source is now being used for this publication, data for 2009 will not match the monthly 2009 data published previously.

There have been two changes to the presentation of the data since the resumption of this publication in April 2010:

- The numbers in each sentence length band now exclude recalls which are shown as a separate subgroup within the total sentenced population (previously recalls were included in the relevant sentence length bands).
- The sentenced population groups “less than or equal to 6 months” and “greater than 6 months to less than 12 months” have been slightly revised to “less than 6 months” and “6 months to less than 12 months” respectively as a result of using the new data source.

Unless otherwise stated, numbers in the text have been rounded for ease of reading using the following rules:

Numbers of 100,000 and over are rounded to the nearest 1,000

Numbers from 1,000 – 99,999 are rounded to the nearest 100

Numbers from 10 – 999 are rounded to the nearest 10

Numbers under 10 are unrounded.

Information on the population in STCs and SCHs has been supplied by the Youth Justice Board.

All figures are provisional pending publication of the 2011 Offender Management Caseload Statistics.

## **Definitions**

Population in custody - Includes those held in prison establishments, police cells under Operation Safeguard, secure training centres (STCs) and secure children's homes (SCHs). All coverage is for England and Wales.

Population in prison – Includes those held in prisons in England and Wales, including the three removal centres (where people are held under immigration powers prior to removal from the UK) of Dover, Haslar and Lindholme.

Sentenced population – Includes those sentenced to an immediate custodial sentence and fine defaulters.

Immediate custodial sentence – this does not include fine defaulters but does include recalls.

Adult prisoners – Prisoners aged 21 years and over.

Young adults – Prisoners aged 18 to 20, but including 21 year old prisoners who were aged 20 or under at conviction who have not been reclassified as part of the adult population

Indeterminate sentences – These cover life sentences and indeterminate sentences for public protection (IPP).

Recalls – Prisoners who are returned to custody having breached the terms of their licence.

## Contact points for further information

Current and previous editions of this publication are available for download at [www.justice.gov.uk/publications/populationincustody.htm](http://www.justice.gov.uk/publications/populationincustody.htm) . Future reports will be published on a monthly basis. Spreadsheet files of the tables contained in this document are also available for download from this address.

Press enquiries should be directed to the Ministry of Justice press office:

Tel: 020 3334 3536

Other enquiries about these statistics should be directed to:

Ministry of Justice  
Justice Statistics Analytical Services  
7<sup>th</sup> Floor  
102 Petty France  
London  
SW1H 9AJ  
Tel: 020 3334 3737

General enquiries about the statistical work of the Ministry of Justice can be e-mailed to: [statistics.enquiries@justice.gsi.gov.uk](mailto:statistics.enquiries@justice.gsi.gov.uk)

General information about the official statistics system of the UK is available from [www.statistics.gov.uk](http://www.statistics.gov.uk)

© Crown copyright  
Produced by the Ministry of Justice

Alternative formats are available on request from [statistics.enquiries@justice.gsi.gov.uk](mailto:statistics.enquiries@justice.gsi.gov.uk)

**Table 1: Population in custody: by type of custody, sex and age group**

	Jun-09			Jun-10			Percentage change 2009 to 2010		
	Males	Females	Total	Males	Females	Total	Males	Females	Total
<b>All population in custody</b>	<b>79,407</b>	<b>4,417</b>	<b>83,824</b>	<b>81,095</b>	<b>4,343</b>	<b>85,438</b>	<b>2</b>	<b>-2</b>	<b>2</b>
Prisons	79,084	4,307	83,391	80,735	4,267	85,002	2	-1	2
Police cells	0	0	0	0	0	0	*	*	*
SCHs	139	36	175	148	21	169	6	*	-3
STCs	184	74	258	212	55	267	15	-26	3
<b>All population in prison</b>	<b>79,084</b>	<b>4,307</b>	<b>83,391</b>	<b>80,735</b>	<b>4,267</b>	<b>85,002</b>	<b>2</b>	<b>-1</b>	<b>2</b>
<b>Remand</b>	<b>12,463</b>	<b>813</b>	<b>13,276</b>	<b>12,218</b>	<b>786</b>	<b>13,004</b>	<b>-2</b>	<b>-3</b>	<b>-2</b>
Untried	8,208	522	8,730	7,981	506	8,487	-3	-3	-3
Convicted unsentenced	4,255	291	4,546	4,237	280	4,517	0	-4	-1
<b>Sentenced</b>	<b>65,133</b>	<b>3,427</b>	<b>68,560</b>	<b>67,561</b>	<b>3,439</b>	<b>71,000</b>	<b>4</b>	<b>0</b>	<b>4</b>
Fine defaulter	86	13	99	111	18	129	29	*	30
Less than 6 months	3,909	398	4,307	4,201	453	4,654	7	14	8
6 months to less than 12 months	2,977	280	3,257	2,922	269	3,191	-2	-4	-2
12 months to less than 4 years	19,201	1,161	20,362	19,698	1,159	20,857	3	0	2
4 years or more (excluding Indeterminate sentences)	21,407	988	22,395	22,706	979	23,685	6	-1	6
Indeterminate sentences	11,813	369	12,182	12,753	381	13,134	8	3	8
Recalls	5,740	218	5,958	5,170	180	5,350	-10	-17	-10
<b>Non-criminal prisoners</b>	<b>1,488</b>	<b>67</b>	<b>1,555</b>	<b>956</b>	<b>42</b>	<b>998</b>	<b>-36</b>	<b>*</b>	<b>-36</b>
<b>All adult population in prison</b>	<b>67,954</b>	<b>3,852</b>	<b>71,806</b>	<b>69,496</b>	<b>3,809</b>	<b>73,305</b>	<b>2</b>	<b>-1</b>	<b>2</b>
<b>Remand</b>	<b>10,019</b>	<b>706</b>	<b>10,725</b>	<b>9,861</b>	<b>691</b>	<b>10,552</b>	<b>-2</b>	<b>-2</b>	<b>-2</b>
Untried	6,640	452	7,092	6,407	448	6,855	-4	-1	-3
Convicted unsentenced	3,379	254	3,633	3,454	243	3,697	2	-4	2
<b>Sentenced</b>	<b>56,560</b>	<b>3,083</b>	<b>59,643</b>	<b>58,740</b>	<b>3,079</b>	<b>61,819</b>	<b>4</b>	<b>0</b>	<b>4</b>
Fine defaulter	83	12	95	106	18	124	28	*	31
Less than 6 months	3,169	333	3,502	3,407	400	3,807	8	20	9
6 months to less than 12 months	2,170	246	2,416	2,205	232	2,437	2	-6	1
12 months to less than 4 years	15,222	1,028	16,250	15,645	1,003	16,648	3	-2	2
4 years or more (excluding Indeterminate sentences)	19,711	922	20,633	20,697	913	21,610	5	-1	5
Indeterminate sentences	11,150	354	11,504	12,058	359	12,417	8	1	8
Recalls	5,055	188	5,243	4,622	154	4,776	-9	-18	-9
<b>Non-criminal prisoners</b>	<b>1,375</b>	<b>63</b>	<b>1,438</b>	<b>895</b>	<b>39</b>	<b>934</b>	<b>-35</b>	<b>*</b>	<b>-35</b>
<b>All 15 -17 year olds in prison</b>	<b>2,063</b>	<b>57</b>	<b>2,120</b>	<b>1,632</b>	<b>28</b>	<b>1,660</b>	<b>-21</b>	<b>*</b>	<b>-22</b>
<b>Remand</b>	<b>502</b>	<b>12</b>	<b>514</b>	<b>466</b>	<b>5</b>	<b>471</b>	<b>-7</b>	<b>*</b>	<b>-8</b>
Untried	353	10	363	367	4	371	4	*	2
Convicted unsentenced	149	2	151	99	1	100	-34	*	-34
<b>Sentenced</b>	<b>1,561</b>	<b>45</b>	<b>1,606</b>	<b>1,166</b>	<b>23</b>	<b>1,189</b>	<b>-25</b>	<b>*</b>	<b>-26</b>
Fine defaulter	0	0	0	0	0	0	*	*	*
Less than 6 months	162	8	170	139	4	143	-14	*	-16
6 months to less than 12 months	369	10	379	261	5	266	-29	*	-30
12 months to less than 4 years	739	16	755	554	10	564	-25	*	-25
4 years or more (excluding Indeterminate sentences)	154	7	161	132	0	132	-14	*	-18
Indeterminate sentences	55	2	57	51	3	54	-7	*	-5
Recalls	82	2	84	29	1	30	*	*	*
<b>Non-criminal prisoners</b>	<b>0</b>	<b>0</b>	<b>0</b>	<b>0</b>	<b>0</b>	<b>0</b>	<b>*</b>	<b>*</b>	<b>*</b>
<b>All young adults in prison</b>	<b>9,067</b>	<b>398</b>	<b>9,465</b>	<b>9,607</b>	<b>430</b>	<b>10,037</b>	<b>6</b>	<b>8</b>	<b>6</b>
<b>Remand</b>	<b>1,942</b>	<b>95</b>	<b>2,037</b>	<b>1,891</b>	<b>90</b>	<b>1,981</b>	<b>-3</b>	<b>-5</b>	<b>-3</b>
Untried	1,215	60	1,275	1,207	54	1,261	-1	-10	-1
Convicted unsentenced	727	35	762	684	36	720	-6	*	-6
<b>Sentenced</b>	<b>7,012</b>	<b>299</b>	<b>7,311</b>	<b>7,655</b>	<b>337</b>	<b>7,992</b>	<b>9</b>	<b>13</b>	<b>9</b>
Fine defaulter	3	1	4	5	0	5	*	*	*
Less than 6 months	578	57	635	655	49	704	13	*	11
6 months to less than 12 months	438	24	462	456	32	488	4	*	6
12 months to less than 4 years	3,240	117	3,357	3,499	146	3,645	8	25	9
4 years or more (excluding Indeterminate sentences)	1,542	59	1,601	1,877	66	1,943	22	12	21
Indeterminate sentences	608	13	621	644	19	663	6	*	7
Recalls	603	28	631	519	25	544	-14	*	-14
<b>Non-criminal prisoners</b>	<b>113</b>	<b>4</b>	<b>117</b>	<b>61</b>	<b>3</b>	<b>64</b>	<b>-46</b>	<b>*</b>	<b>-45</b>

Young adults are those aged 18 - 20 and those 21 year olds who were aged 20 or under at conviction who have not been reclassified as part of the adult population

\* indicates that one or both of the comparative numbers are less than 50 which could give rise to misleading percentage changes



**Table 2: Population in prison by offence, sex and age group - remand and immediate custodial sentence**

	Jun-09		Jun-10		Percentage change 2009 to 2010	
	Remand	Immediate custodial sentence (includes recalls)	Remand	Immediate custodial sentence (includes recalls)	Remand	Immediate custodial sentence (includes recalls)
<b>All prisoners</b>	<b>13,276</b>	<b>68,461</b>	<b>13,004</b>	<b>70,871</b>	<b>-2</b>	<b>4</b>
Violence against the person	3,370	19,681	3,327	20,183	-1	3
Sexual offences	1,054	8,167	1,225	9,294	16	14
Robbery	1,495	8,738	1,447	8,834	-3	1
Burglary	1,549	7,403	1,353	6,857	-13	-7
Theft and Handling	860	3,134	961	3,850	12	23
Fraud and Forgery	468	1,923	378	1,544	-19	-20
Drug offences	1,933	10,420	1,799	11,064	-7	6
Motoring offences	86	1,085	63	931	-27	-14
Other offences	1,909	6,254	2,085	7,444	9	19
Offence not recorded	552	1,656	366	870	-34	-47
<b>All male prisoners</b>	<b>12,463</b>	<b>65,047</b>	<b>12,218</b>	<b>67,450</b>	<b>-2</b>	<b>4</b>
Violence against the person	3,198	18,835	3,139	19,283	-2	2
Sexual offences	1,032	8,107	1,187	9,211	15	14
Robbery	1,419	8,406	1,398	8,562	-1	2
Burglary	1,504	7,202	1,312	6,706	-13	-7
Theft and Handling	751	2,741	869	3,412	16	24
Fraud and Forgery	404	1,669	330	1,359	-18	-19
Drug offences	1,793	9,561	1,666	10,235	-7	7
Motoring offences	71	1,034	63	910	-11	-12
Other offences	1,775	5,893	1,910	6,984	8	19
Offence not recorded	516	1,599	344	788	-33	-51
<b>All female prisoners</b>	<b>813</b>	<b>3,414</b>	<b>786</b>	<b>3,421</b>	<b>-3</b>	<b>0</b>
Violence against the person	172	846	188	900	9	6
Sexual offences	22	60	38	83	*	38
Robbery	76	332	49	272	*	-18
Burglary	45	201	41	151	*	-25
Theft and Handling	109	393	92	438	-16	11
Fraud and Forgery	64	254	48	185	*	-27
Drug offences	140	859	133	829	-5	-3
Motoring offences	15	51	0	21	*	*
Other offences	134	361	175	460	31	27
Offence not recorded	36	57	22	82	*	44

**Table 2: Population in prison by offence, sex and age group - remand and immediate custodial sentence**

	Jun-09		Jun-10		Percentage change 2009 to 2010	
	Remand	Immediate custodial sentence (includes recalls)	Remand	Immediate custodial sentence (includes recalls)	Remand	Immediate custodial sentence (includes recalls)
<b>All adult prisoners</b>	<b>10,725</b>	<b>59,548</b>	<b>10,552</b>	<b>61,695</b>	<b>-2</b>	<b>4</b>
Violence against the person	2,713	17,167	2,667	17,488	-2	2
Sexual offences	925	7,778	1,060	8,720	15	12
Robbery	947	6,641	915	6,746	-3	2
Burglary	1,180	6,252	1,006	5,663	-15	-9
Theft and Handling	708	2,716	808	3,420	14	26
Fraud and Forgery	439	1,878	365	1,510	-17	-20
Drug offences	1,708	9,626	1,596	10,228	-7	6
Motoring offences	63	939	53	832	-16	-11
Other offences	1,584	5,245	1,757	6,355	11	21
Offence not recorded	458	1,306	325	733	-29	-44
<b>All adult male prisoners</b>	<b>10,019</b>	<b>56,477</b>	<b>9,861</b>	<b>58,634</b>	<b>-2</b>	<b>4</b>
Violence against the person	2,573	16,457	2,513	16,736	-2	2
Sexual offences	906	7,721	1,023	8,647	13	12
Robbery	886	6,373	876	6,525	-1	2
Burglary	1,139	6,067	969	5,523	-15	-9
Theft and handling	604	2,350	723	3,008	20	28
Fraud and Forgery	378	1,625	318	1,327	-16	-18
Drug offences	1,586	8,816	1,480	9,448	-7	7
Motoring offences	63	923	53	813	-16	-12
Other offences	1,461	4,896	1,600	5,941	10	21
Offence not recorded	423	1,249	306	666	-28	-47
<b>All adult female prisoners</b>	<b>706</b>	<b>3,071</b>	<b>691</b>	<b>3,061</b>	<b>-2</b>	<b>0</b>
Violence against the person	140	710	154	752	10	6
Sexual offences	19	57	37	73	*	28
Robbery	61	268	39	221	*	-18
Burglary	41	185	37	140	*	-24
Theft and handling	104	366	85	412	-18	13
Fraud and Forgery	61	253	47	183	*	-28
Drug offences	122	810	116	780	-5	-4
Motoring offences	0	16	0	19	*	*
Other offences	123	349	157	414	28	19
Offence not recorded	35	57	19	67	*	18

**Table 2: Population in prison by offence, sex and age group - remand and immediate custodial sentence**

	Jun-09		Jun-10		Percentage change 2009 to 2010	
	Remand	Immediate custodial sentence (includes recalls)	Remand	Immediate custodial sentence (includes recalls)	Remand	Immediate custodial sentence (includes recalls)
<b>All aged 15-17</b>	<b>514</b>	<b>1,606</b>	<b>471</b>	<b>1,189</b>	<b>-8</b>	<b>-26</b>
Violence against the person	136	374	164	315	21	-16
Sexual offences	21	73	26	58	*	-21
Robbery	152	437	98	289	-36	-34
Burglary	62	258	64	202	3	-22
Theft and Handling	28	128	25	78	*	-39
Fraud and Forgery	1	1	1	3	*	*
Drug offences	40	84	37	64	*	-24
Motoring offences	1	14	1	5	*	*
Other offences	50	213	47	168	*	-21
Offence not recorded	23	24	8	7	*	*
<b>All males aged 15-17</b>	<b>502</b>	<b>1,561</b>	<b>466</b>	<b>1,166</b>	<b>-7</b>	<b>-25</b>
Violence against the person	132	358	162	305	23	-15
Sexual offences	21	72	26	58	*	-19
Robbery	150	426	98	284	-35	-33
Burglary	62	255	64	202	3	-21
Theft and handling	28	125	24	77	*	-38
Fraud and Forgery	1	1	1	3	*	*
Drug offences	38	81	37	63	*	-22
Motoring offences	1	14	1	5	*	*
Other offences	47	205	46	164	*	-20
Offence not recorded	22	24	7	5	*	*
<b>All females aged 15-17</b>	<b>12</b>	<b>45</b>	<b>5</b>	<b>23</b>	<b>*</b>	<b>*</b>
Violence against the person	4	16	2	10	*	*
Sexual offences	0	1	0	0	*	*
Robbery	2	11	0	5	*	*
Burglary	0	3	0	0	*	*
Theft and handling	0	3	1	1	*	*
Fraud and Forgery	0	0	0	0	*	*
Drug offences	2	3	0	1	*	*
Motoring offences	0	0	0	0	*	*
Other offences	3	8	1	4	*	*
Offence not recorded	1	0	1	2	*	*

**Table 2: Population in prison by offence, sex and age group - remand and immediate custodial sentence**

	Jun-09		Jun-10		Percentage change 2009 to 2010	
	Remand	Immediate custodial sentence (includes recalls)	Remand	Immediate custodial sentence (includes recalls)	Remand	Immediate custodial sentence (includes recalls)
<b>All young adults</b>	<b>2,037</b>	<b>7,307</b>	<b>1,981</b>	<b>7,987</b>	<b>-3</b>	<b>9</b>
Violence against the person	521	2,140	496	2,380	-5	11
Sexual offences	108	316	139	516	29	63
Robbery	396	1,660	434	1,799	10	8
Burglary	307	893	283	992	-8	11
Theft and Handling	124	290	128	352	3	21
Fraud and Forgery	28	44	12	31	*	*
Drug offences	185	710	166	772	-10	9
Motoring offences	22	132	9	94	*	-29
Other offences	275	796	281	921	2	16
Offence not recorded	71	326	33	130	*	-60
<b>All male young adults</b>	<b>1,942</b>	<b>7,009</b>	<b>1,891</b>	<b>7,650</b>	<b>-3</b>	<b>9</b>
Violence against the person	493	2,020	464	2,242	-6	11
Sexual offences	105	314	138	506	31	61
Robbery	383	1,607	424	1,753	11	9
Burglary	303	880	279	981	-8	11
Theft and handling	119	266	122	327	3	23
Fraud and Forgery	25	43	11	29	*	*
Drug offences	169	664	149	724	-12	9
Motoring offences	7	97	9	92	*	-5
Other offences	267	792	264	879	-1	11
Offence not recorded	71	326	31	117	*	-64
<b>All female young adults</b>	<b>95</b>	<b>298</b>	<b>90</b>	<b>337</b>	<b>-5</b>	<b>13</b>
Violence against the person	28	120	32	138	*	15
Sexual offences	3	2	1	10	*	*
Robbery	13	53	10	46	*	*
Burglary	4	13	4	11	*	*
Theft and handling	5	24	6	25	*	*
Fraud and Forgery	3	1	1	2	*	*
Drug offences	16	46	17	48	*	*
Motoring offences	0	0	0	2	*	*
Other offences	15	35	17	42	*	*
Offence not recorded	8	4	2	13	*	*

Figures for immediate custodial population includes recallées, but excludes fine defaulters

\* indicates that one or both of the comparative numbers are less than 50 which could give rise to misleading percentage changes

**Table 3: Young population in prison: by type of custody and sex**

	15	16	17	Total - under 18	18	19	20	21	Total Young Adults
<b>All young population in prisons</b>									
<b>Remand</b>	<b>52</b>	<b>137</b>	<b>282</b>	<b>471</b>	<b>602</b>	<b>640</b>	<b>596</b>	<b>143</b>	<b>1,981</b>
Untried	42	107	222	371	399	396	370	96	1,261
Convicted unsentenced	10	30	60	100	203	244	226	47	720
<b>Sentenced</b>	<b>84</b>	<b>344</b>	<b>761</b>	<b>1,189</b>	<b>1,374</b>	<b>2,431</b>	<b>2,739</b>	<b>1,448</b>	<b>7,992</b>
Fine defaulter	0	0	0	0	2	1	2	0	5
Immediate custodial sentence (includes recalls)	84	344	761	1,189	1,372	2,430	2,737	1,448	7,987
<b>Non-criminal prisoners</b>	<b>0</b>	<b>0</b>	<b>0</b>	<b>0</b>	<b>11</b>	<b>17</b>	<b>19</b>	<b>17</b>	<b>64</b>
<b>All young male population in prisons</b>									
<b>Remand</b>	<b>52</b>	<b>137</b>	<b>277</b>	<b>466</b>	<b>585</b>	<b>603</b>	<b>567</b>	<b>136</b>	<b>1,891</b>
Untried	42	107	218	367	392	373	349	93	1,207
Convicted unsentenced	10	30	59	99	193	230	218	43	684
<b>Sentenced</b>	<b>84</b>	<b>344</b>	<b>738</b>	<b>1,166</b>	<b>1,310</b>	<b>2,322</b>	<b>2,631</b>	<b>1,392</b>	<b>7,655</b>
Fine defaulter	0	0	0	0	2	1	2	0	5
Immediate custodial sentence (includes recalls)	84	344	738	1,166	1,308	2,321	2,629	1,392	7,650
<b>Non-criminal prisoners</b>	<b>0</b>	<b>0</b>	<b>0</b>	<b>0</b>	<b>10</b>	<b>17</b>	<b>19</b>	<b>15</b>	<b>61</b>
<b>All young female population in prisons</b>									
<b>Remand</b>	<b>0</b>	<b>0</b>	<b>5</b>	<b>5</b>	<b>17</b>	<b>37</b>	<b>29</b>	<b>7</b>	<b>90</b>
Untried	0	0	4	4	7	23	21	3	54
Convicted unsentenced	0	0	1	1	10	14	8	4	36
<b>Sentenced</b>	<b>0</b>	<b>0</b>	<b>23</b>	<b>23</b>	<b>64</b>	<b>109</b>	<b>108</b>	<b>56</b>	<b>337</b>
Fine defaulter	0	0	0	0	0	0	0	0	0
Immediate custodial sentence (includes recalls)	0	0	23	23	64	109	108	56	337
<b>Non-criminal prisoners</b>	<b>0</b>	<b>0</b>	<b>0</b>	<b>0</b>	<b>1</b>	<b>0</b>	<b>0</b>	<b>2</b>	<b>3</b>

Young adults are those aged 18 - 20 and those 21 year olds who were aged 20 or under at conviction who have not been reclassified as part of the adult population

**Table 4: CNA and population by sex and establishment**

30th June 2010

Establishment	In use CNA <sup>1</sup>	Total Population	Of which:		
			Foreign nationals	UK nationals	Nationality not recorded
<b>Males</b>					
Altcourse	794	1,261	92	1138	31
Acklington	946	930	20	875	35
Ashfield	400	275	29	245	1
Ashwell	184	214	5	209	0
Aylesbury	421	433	78	353	2
Belmarsh	800	833	174	634	25
Buckley Hall	350	380	4	370	6
Blundeston	481	522	83	434	5
Bedford	315	487	102	355	30
Blantyre House	122	121	0	121	0
Bristol	424	607	55	480	72
Birmingham	1,083	1,475	236	1196	43
Bullingdon	879	1,097	147	947	3
Bure	503	520	61	456	3
Brinsford	545	565	52	496	17
Bullwood Hall	220	224	217	5	2
Brixton	606	751	240	479	32
Chelmsford	554	656	88	492	76
Cardiff	555	794	58	704	32
Cookham Wood	143	112	13	56	43
Coldingley	494	505	18	487	0
Castington	400	191	2	137	52
Channings Wood	698	709	5	702	2
Canterbury	195	295	279	11	5
Dartmoor	572	585	68	514	3
Dovegate	1,060	1,127	98	1013	16
Durham	606	916	58	727	131
Doncaster	713	1,071	112	948	11
Dorchester	146	220	16	192	12
Deerbolt	513	478	15	455	8
Dover	316	311	304	1	6
Erlestoke	470	464	16	448	0
Sheppey Cluster (Standford Hill)	464	444	32	407	5
Everthorpe	603	664	11	640	13
Exeter	316	530	38	452	40
Sheppey Cluster (Elmley)	925	1,134	162	939	33
Forest Bank	1,064	1,344	99	1218	27
Ford	557	539	44	474	21
Frankland	859	821	56	761	4
Feltham	762	664	140	496	28
Full Sutton	596	589	55	533	1
Featherstone	642	643	57	585	1
Garth	812	835	57	776	2
Gloucester	225	289	33	251	5
Guys Marsh	497	552	66	484	2
Grendon/ Spring Hill	573	550	20	529	1
Glen Parva	652	720	65	612	43
Gartree	677	671	83	583	5
Hollesley Bay	365	354	11	339	4
Huntercombe	360	65	11	54	0
Hewell*	1,173	1,374	189	1165	20
Holme House	1,033	1,046	31	967	48
Hindley	440	331	9	321	1
Hull	723	1,000	72	923	5
High Down	999	1,047	224	796	27
Highpoint	920	939	190	739	10
Haslar	124	116	112	0	4
Haverigg	622	625	111	511	3
Isle of Wight**	1,564	1,640	220	1380	40
Kirkham	590	589	5	578	6
Kennet	175	341	2	320	19
Kirklevington Grange	283	271	0	269	2
Lancaster	159	237	5	187	45
Leicester	210	345	69	268	8

**Table 4: CNA and population by sex and establishment**

30th June 2010

Establishment	In use CNA <sup>1</sup>	Total Population	Of which:		
			Foreign nationals	UK nationals	Nationality not recorded
Leeds	829	1,114	92	1005	17
Lancaster Farms	480	502	18	464	20
Lowdham Grange	900	880	125	742	13
Lindholme	1,054	1,102	289	793	20
Lincoln	436	573	77	489	7
Long Lartin	622	612	83	527	2
Latchmere House	207	191	5	186	0
Liverpool	1,157	1,245	113	1107	25
Littlehey	1,113	1,031	137	881	13
Lewes	495	469	51	358	60
Leyhill	532	520	26	492	2
Moorland/Moorland Open <sup>2</sup>	987	1,018	46	970	2
Manchester	949	1,206	165	956	85
Maidstone	565	586	236	340	10
Mount	747	769	191	574	4
Edmunds Hill	379	376	86	274	16
Nottingham	723	898	69	699	130
Northallerton	137	230	4	224	2
North Sea Camp	318	309	7	296	6
Norwich	625	749	84	597	68
Onley	710	692	38	632	22
Peterborough <sup>3</sup>	480	586	107	468	11
Portland	463	468	55	405	8
Preston	453	753	35	475	243
Parc	838	1,085	40	1023	22
Kingston (Portsmouth)	199	198	14	184	0
Pentonville	909	1,178	298	694	186
Rochester	724	723	127	577	19
Reading	190	257	19	231	7
Rye Hill	600	611	120	489	2
Ranby	969	1,062	108	941	13
Risley	1,050	1,085	148	911	26
Stafford	741	730	74	647	9
Stoke Heath	576	595	24	545	26
Stocken	779	833	32	782	19
Sheppey Cluster (Swaleside)	1,112	1,105	199	900	6
Shepton Mallet	165	189	8	181	0
Swinfen Hall	604	611	55	553	3
Sudbury	581	578	19	555	4
Swansea	240	421	15	385	21
Shrewsbury	184	313	14	298	1
Thorn Cross	322	288	1	279	8
Usk/ Prescoed	320	423	16	404	3
Verne	571	579	308	267	4
Wellingborough	548	540	78	454	8
Winchester	499	680	65	579	36
Wakefield	748	733	67	664	2
Wealstun	655	613	14	591	8
Woodhill	656	757	103	633	21
Warren Hill	222	180	17	154	9
Wayland	957	1,001	37	961	3
Wymott	1,113	1,141	72	1059	10
Werrington	160	126	2	83	41
Wolds	320	380	10	370	0
Whitemoor	448	449	99	349	1
Wormwood Scrubs	1,176	1,273	445	737	91
Whatton	709	794	44	741	9
Wandsworth	1,107	1,569	497	952	120
Wetherby	352	318	9	306	3
<b>TOTAL</b>	<b>73,177</b>	<b>80,735</b>	<b>10,361</b>	<b>67,670</b>	<b>2,704</b>

**Table 4: CNA and population by sex and establishment**

30th June 2010

Establishment	In use CNA <sup>1</sup>	Total Population	Of which:		
			Foreign nationals	UK nationals	Nationality not recorded
<b>Females</b>					
Askham Grange	126	121	1	120	0
Bronze field	527	479	150	319	10
Drake Hall	315	302	41	255	6
Downview	358	326	69	253	4
East Sutton Park	98	82	4	77	1
Eastwood Park	326	318	35	265	18
Foston Hall	283	245	13	225	7
Holloway	496	416	121	266	29
Low Newton	282	243	8	234	1
Morton Hall	392	284	174	110	0
New Hall	386	375	28	312	35
Peterborough <sup>3</sup>	360	362	69	284	9
Send	282	273	30	243	0
Styal	447	441	31	383	27
<b>TOTAL</b>	<b>4,678</b>	<b>4,267</b>	<b>774</b>	<b>3,346</b>	<b>147</b>
<b>Male and female establishment TOTAL</b>	<b>77,855</b>	<b>85,002</b>	<b>11,135</b>	<b>71,016</b>	<b>2,851</b>
<b>Police cells</b>	<b>***</b>				
<b>Establishment and Police cell TOTAL</b>	<b>77,855</b>	<b>85,002</b>	<b>11,135</b>	<b>71,016</b>	<b>2,851</b>

<sup>1</sup> In Use CNA - Certified Normal Accommodation that is available for immediate use, excludes damaged cells, cells affected by building works and cells taken out of use due to staff shortages

<sup>2</sup> Data for Moorland/Moorland Open has been combined

<sup>3</sup> Peterborough is a dual purpose prison for men and women

\* HMP Hewell was created by an amalgamation of the three former prisons, Blakenhurst, Brockhill and Hewell Grange on 25 June 2008

\*\* HMP Isle of Wight was created by an amalgamation of the three former prisons, Albany, Camp Hill and Parkhurst on 1st April 2009

\*\*\* On 30 June 2010 up to 400 police cells available under operation safeguard which are not included in the CNA figure



**Table 5: Population in prison by nationality and sex**

30th June 2010

Nationality	Male	Female	Total	Nationality	Male	Female	Total
<b>All nationalities</b>	<b>80,735</b>	<b>4,267</b>	<b>85,002</b>				
<b>British nationals</b>	<b>67,670</b>	<b>3,346</b>	<b>71,016</b>				
<b>Foreign nationals</b>	<b>10,361</b>	<b>774</b>	<b>11,135</b>				
<b>Nationality not recorded</b>	<b>2,704</b>	<b>147</b>	<b>2,851</b>				
<b>Total Africa</b>	<b>2,567</b>	<b>212</b>	<b>2,779</b>	<b>Total Europe</b>	<b>3,659</b>	<b>242</b>	<b>3,901</b>
Algeria	175	0	175	Albania	151	3	154
Angola	70	4	74	Armenia	9	0	9
Benin	2	0	2	Austria	13	2	15
Botswana	2	1	3	Azerbaijan	3	1	4
Burundi	11	0	11	Belgium	29	3	32
Cameroon	30	0	30	Bosnia and Herzegovina	13	5	18
Central African Republic	22	1	23	Bulgaria	24	19	43
Congo	131	7	138	Croatia	7	0	7
Congo, Democratic Republic of the	0	1	1	Cyprus	28	0	28
Egypt	20	0	20	Czech Republic	75	8	83
Equatorial Guinea	1	0	1	Denmark	8	1	9
Ethiopia	55	4	59	Estonia	32	0	32
Gabon	1	0	1	Finland	3	0	3
Gambia	57	1	58	France	140	9	149
Ghana	120	21	141	Georgia	9	0	9
Guinea	11	0	11	Germany	83	11	94
Guinea-Bissau	1	0	1	Gibraltar	4	0	4
Ivory Coast	31	0	31	Greece	12	3	15
Kenya	55	7	62	Hungary	40	7	47
Liberia	23	3	26	Iceland	0	0	0
Libyan Arab Jamahiriya	24	0	24	Irish Republic	657	24	681
Malawi	10	7	17	Italy	92	2	94
Mali	2	0	2	Kazakhstan	2	0	2
Mauritania	5	0	5	Kyrgyzstan	1	0	1
Mauritius	18	0	18	Latvia	137	13	150
Morocco	57	1	58	Liechtenstein	0	0	0
Mozambique	3	1	4	Lithuania	345	16	361
Namibia	6	1	7	Macedonia	6	0	6
Niger	11	1	12	Malta	3	0	3
Nigeria	650	77	727	Moldova	18	0	18
Rwanda	20	0	20	Monaco	1	0	1
Senegal	5	0	5	Netherlands	107	12	119
Seychelles	3	1	4	Norway	7	0	7
Sierra Leone	68	4	72	Poland	622	20	642
Somalia	422	11	433	Portugal	197	12	209
South Africa	113	24	137	Romania	341	39	380
Sudan	40	1	41	Russian Federation	99	9	108
Swaziland	1	0	1	San Marino	1	0	1
Tanzania	26	1	27	Serbia and Montenegro	26	2	28
Togo	7	0	7	Slovakia	61	4	65
Tunisia	19	0	19	Slovenia	4	0	4
Uganda	57	10	67	Spain	59	7	66
Zambia	14	1	15	Sweden	14	4	18
Zimbabwe	168	21	189	Switzerland	4	1	5
				Turkey	162	5	167
				Turkmenistan	1	0	1
				Uzbekistan	9	0	9
<b>Total Asia</b>	<b>2,196</b>	<b>140</b>	<b>2,336</b>	<b>Total Middle East</b>	<b>523</b>	<b>16</b>	<b>539</b>
Afghanistan	137	1	138	Iran	187	10	197
Bangladesh	210	6	216	Iraq	233	1	234
Cambodia	1	0	1	Israel	40	3	43
China	334	30	364	Jordan	4	0	4
India	321	8	329	Kuwait	8	1	9
Indonesia	1	0	1	Lebanon	16	0	16
Japan	1	0	1	Oman	0	1	1
Korea, DPR (North Korea)	1	1	2	Qatar	1	0	1
Korea, Republic of	7	0	7	Saudi Arabia	12	0	12
Malaysia	31	8	39	Syrian Arab Republic	11	0	11
Mongolia	5	0	5	United Arab Emirates	1	0	1
Myanmar	3	0	3	Yemen, Republic of	10	0	10
Nepal	8	2	10				
Pakistan	429	11	440	<b>Total Oceania</b>	<b>33</b>	<b>6</b>	<b>39</b>
Philippines	15	9	24	Australia	21	4	25
Singapore	3	3	6	Fiji	6	0	6
Sri Lanka	138	1	139	Kiribati	1	0	1
Taiwan (Nationalist Chinese)	3	2	5	New Zealand	4	1	5
Thailand	3	7	10	Papua New Guinea	0	0	0
Vietnam	545	51	596	Samoa	1	0	1
				Tonga	0	1	1
<b>Total Central and South America</b>	<b>228</b>	<b>36</b>	<b>264</b>	<b>Total West Indies</b>	<b>1,054</b>	<b>99</b>	<b>1,153</b>
Argentina	4	3	7	Anguilla	2	0	2
Belize	0	1	1	Aruba	1	0	1
Bolivia	4	1	5	Bahamas	1	0	1
Brazil	54	11	65	Barbados	30	9	39
Chile	8	0	8	Bermuda	1	1	2
Colombia	72	3	75	Cuba	4	0	4
Costa Rica	4	1	5	Dominica	14	1	15
Ecuador	7	0	7	Dominican Republic	0	0	0
French Guiana	2	1	3	Grenada	16	1	17
Guatemala	2	1	3	Haiti	1	0	1
Guyana	30	4	34	Jamaica	884	58	942
Mexico	14	7	21	Montserrat	17	0	17
Nicaragua	1	0	1	Netherlands Antilles	5	2	7
Panama	1	0	1	St Kitts and Nevis	3	0	3
Paraguay	2	0	2	St Lucia	19	11	30
Peru	4	1	5	St Vincent and the Grenadines	13	3	16
Suriname	2	0	2	Trinidad and Tobago	43	13	56
Uruguay	1	0	1	Virgin Islands	0	0	0
Venezuela	16	2	18				
<b>Total North America</b>	<b>100</b>	<b>23</b>	<b>123</b>	<b>Total Other</b>	<b>1</b>	<b>0</b>	<b>1</b>
Canada	27	6	33				
United States	73	17	90				

**Data Sources and Quality**

These figures have been drawn from administrative IT systems. Care is taken when processing and analysing the returns, but the detail collected is subject to the inaccuracies inherent in any large scale recording system, and so although shown to the last individual, the figure may not be accurate to that level.