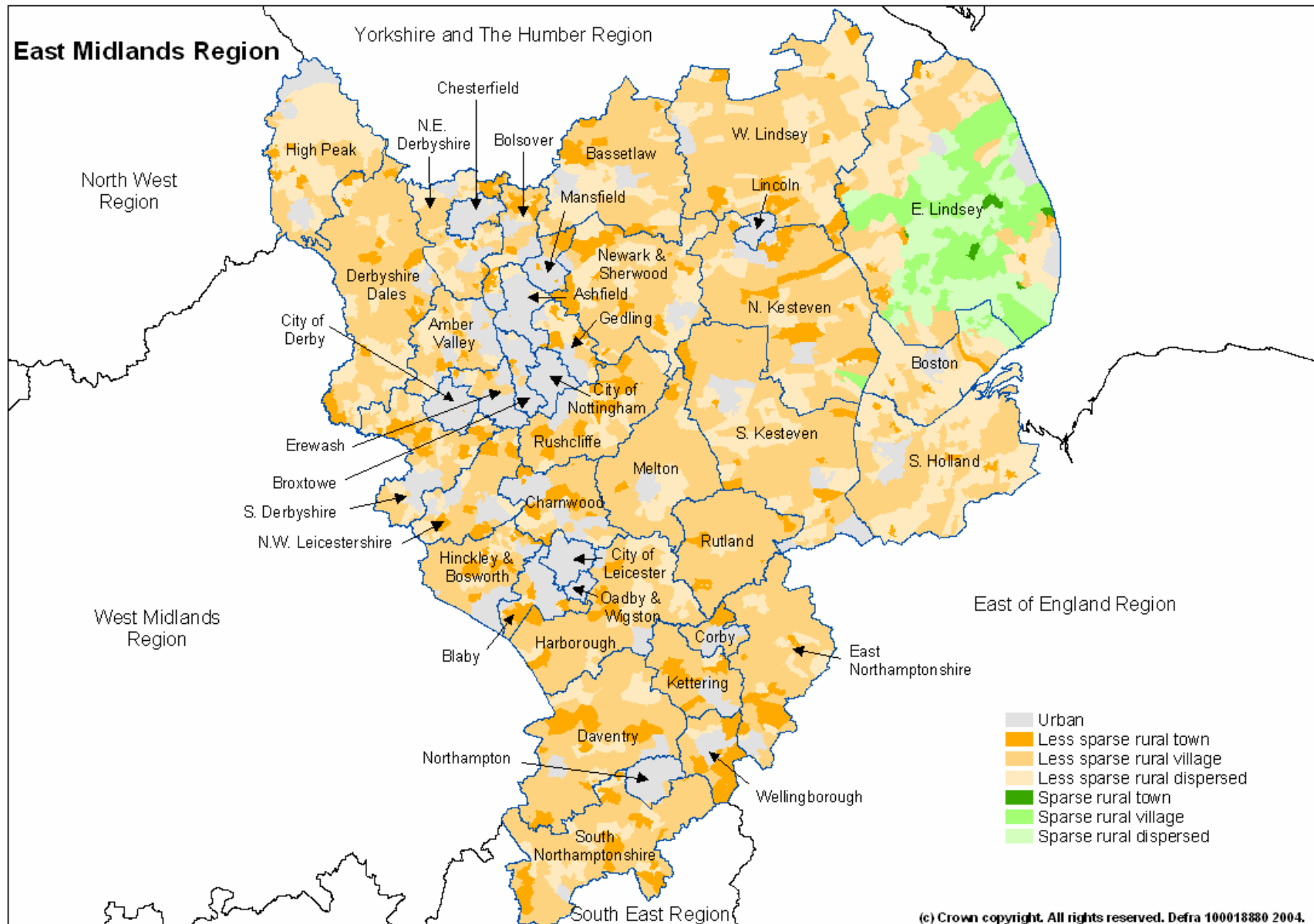


**Corby**

**Census 2001 and Access to Services  
Focus on Rural Areas**

Corby is in the East Midlands Government Office Region

Map of the Government Office Region showing Authority boundaries and shaded by Output Area according to the urban / rural definition.



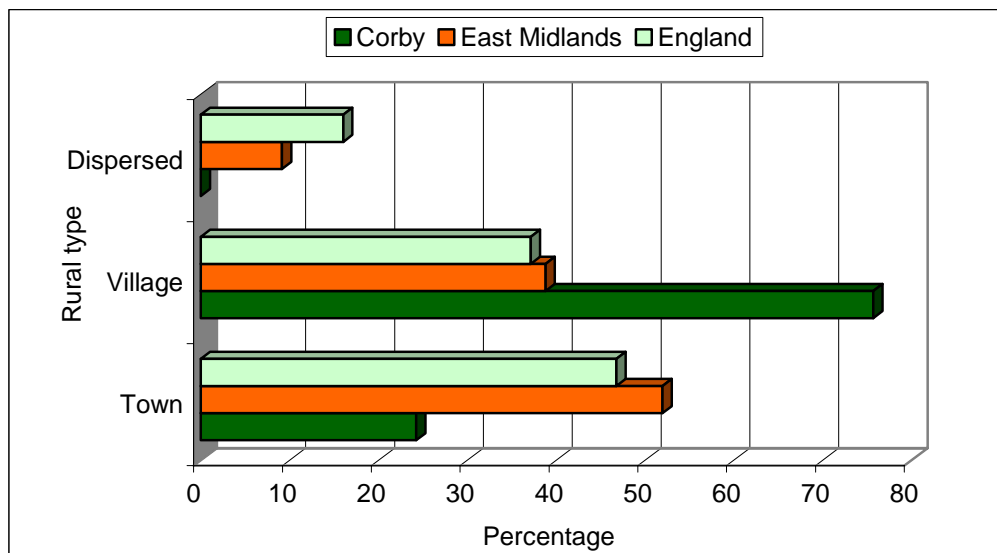
## Population

In Corby 7.4% of people live in rural areas, compared with 29.5% in the Government Office Region. Within the rural areas all people live in less sparse areas

	Corby			East Midlands		
	Male	Female	Total	Male	Female	Total
Urban	23,959	25,263	49,222	1,438,338	1,501,642	2,939,980
Rural	1,928	2,024	3,952	610,520	621,674	1,232,194
Less Sparse	1,928	2,024	3,952	591,557	602,714	1,194,271
Town	468	466	934	313,742	325,980	639,722
Village	1,460	1,558	3,018	226,340	225,528	451,868
Dispersed	-	-	-	51,475	51,206	102,681
Sparse	-	-	-	18,963	18,960	37,923
Town	-	-	-	3,727	4,030	7,757
Village	-	-	-	10,726	10,461	21,187
Dispersed	-	-	-	4,510	4,469	8,979
Total	25,887	27,287	53,174	2,048,858	2,123,316	4,172,174
Percentage rural	7.4	7.4	7.4	29.8	29.3	29.5

Source table from the Census: UV03 Gender

Proportion of the population of the Authority living in rural towns, villages and dispersed areas compared with the Government Office Region and England.



Source table from the Census: UV03 Gender

## Age

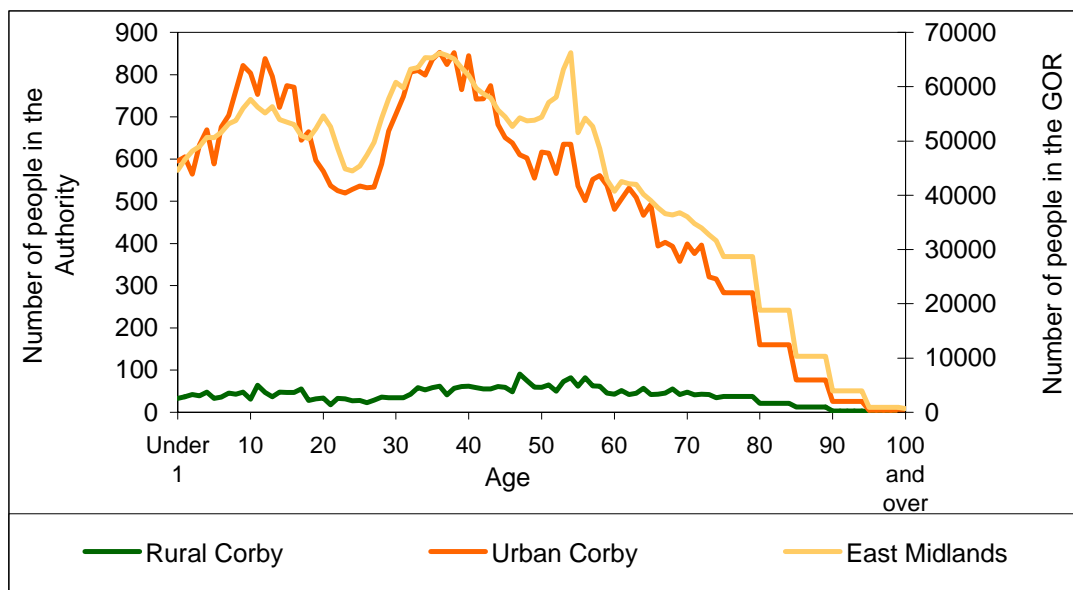
In Corby 0.8% of the population live in rural areas and are under 10 years old. 1.6% of the Authority's population live in rural areas and are under 19 years of age. 1.1% are aged 70 or over and live in rural areas.

### Total population within the Authority, broken down by age.

Age	Total	Totals		Rural breakdown						% Rural
		Urban	Rural	Towns		Villages		Dispersed		
				Less sparse	Sparse	Less sparse	Sparse	Less sparse	Sparse	
Under 10	7,025	6,620	405	99	-	306	-	-	-	5.8
10 to 19	7,799	7,363	436	122	-	314	-	-	-	5.6
20 to 29	5,830	5,535	295	82	-	213	-	-	-	5.1
30 to 39	8,501	7,998	503	138	-	365	-	-	-	5.9
40 to 49	7,468	6,843	625	175	-	450	-	-	-	8.4
50 to 59	6,400	5,756	644	153	-	491	-	-	-	10.1
60 to 69	5,000	4,533	467	86	-	381	-	-	-	9.3
70 to 79	3,622	3,225	397	61	-	336	-	-	-	11.0
80 to 89	1,356	1,186	170	23	-	147	-	-	-	12.5
90 and over	175	156	19	3	-	16	-	-	-	10.9
	53,176	49,215	3,961	942	-	3,019	-	-	-	7.4

Source table from the Census: UV04 Age

### Age of the population in urban/rural parts of the Authority and totals for the Government Office Region.

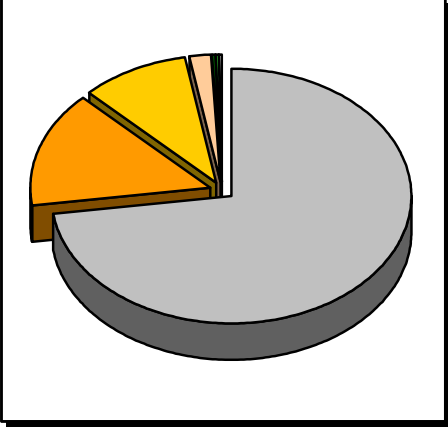
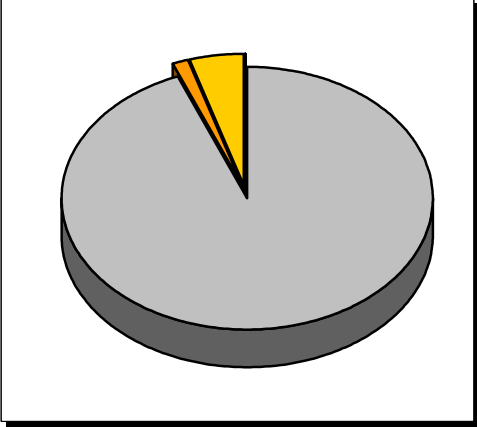


Source table from the Census: UV04 Age

Proportion of children under 5 split by the urban rural definition, for the Authority and the Government Office Region

Authority:  
Corby  
Number of under 5's: 3,300

Government Office Region:  
East Midlands  
Number of under 5's: 238,900



- Urban
- Less Sparse Rural Town
- Less Sparse Rural Village
- Less Sparse Rural Dispersed
- Sparse Rural Town
- Sparse Rural Village
- Sparse Rural Dispersed

Source table from the Census: UV04 Age

## Marital Status

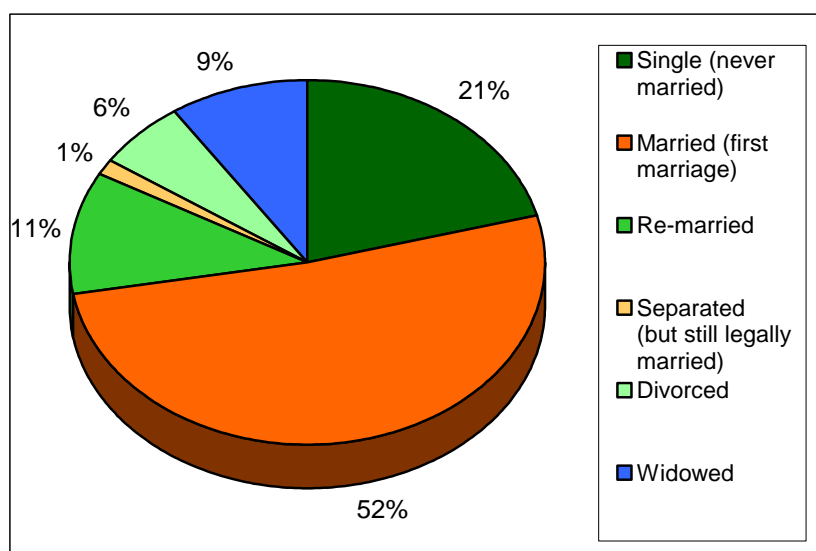
The 'Marital Status' table (UV07) classifies all people (i.e. from babies upwards) according to their marital status. To create the following table *it has been assumed* that all people aged under 16 would be in the "single – never married" category. All people under 16 years of age have been deducted from the original "single – never married" figures on the marital status to estimated figures on the marital status of people aged 16 or over.

### Estimated number of people in the Authority and Government Office Region aged 16 or over, by marital status

	Single (never married)	Married (first marriage)	Re-married	Separated (but still legally married)	Divorced	Widowed
<b>Corby</b>						
Urban	10,891	15,295	3,188	1,395	4,000	3,142
Rural	685	1,681	349	43	205	308
Less Sparse	685	1,681	349	43	205	308
Town	188	380	84	7	44	53
Village	497	1,301	265	36	161	255
Dispersed	-	-	-	-	-	-
Sparse	-	-	-	-	-	-
Town	-	-	-	-	-	-
Village	-	-	-	-	-	-
Dispersed	-	-	-	-	-	-
<b>Total</b>	<b>11,576</b>	<b>16,976</b>	<b>3,537</b>	<b>1,438</b>	<b>4,205</b>	<b>3,450</b>
<b>East Midlands</b>						
Urban	704,407	1,004,965	179,179	57,445	197,626	197,722
Rural	219,833	501,466	96,845	20,080	74,434	81,368
<b>Total</b>	<b>924,240</b>	<b>1,506,431</b>	<b>276,024</b>	<b>77,525</b>	<b>272,060</b>	<b>279,090</b>

Source tables from the Census: UV04 Age and UV07 Marital Status

### Estimated proportions of people aged 16 or over in rural parts of the Authority, by marital status.



Source tables from the Census: UV04 Age and UV07 Marital Status

## Household composition

In Corby 7.3% of households are in rural areas. 23.9% of rural households are single person households. 6.1% of rural households are lone parent family households.

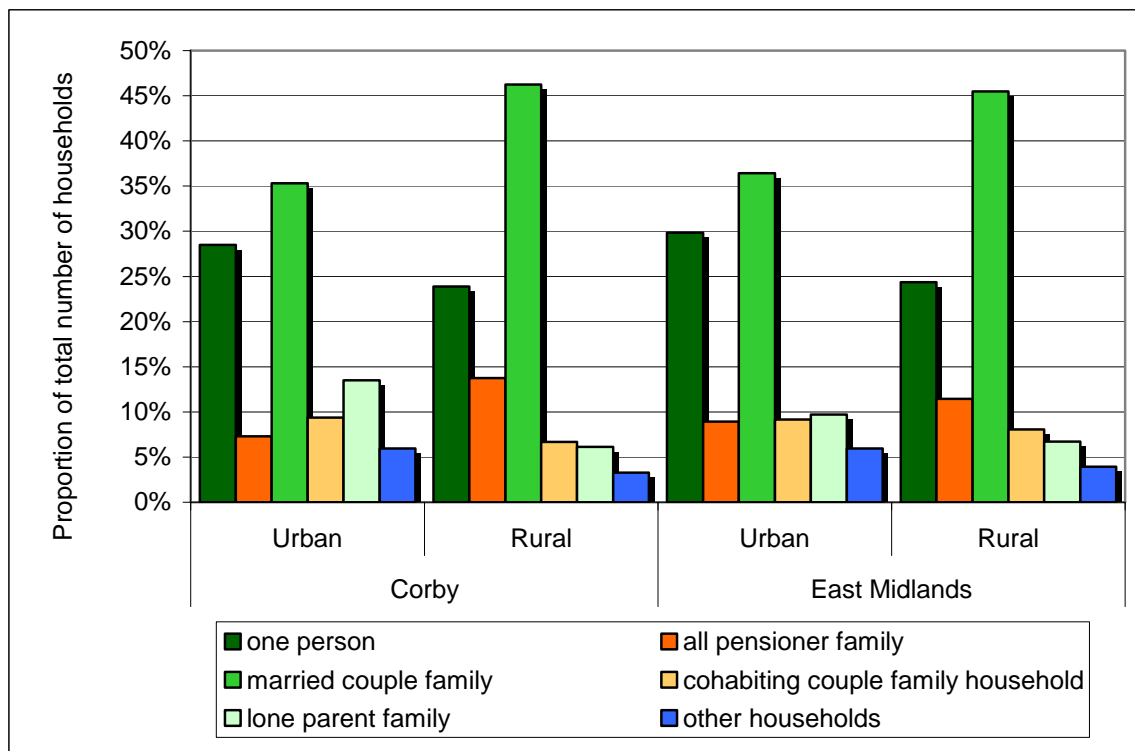
### Number of households, by composition of the household

	Urban Total	Rural						% rural	
		Total	Less sparse			Sparse			
			Town	Village	Dispersed	Town	Village	Dispersed	
Total number of households	20,393	1,613	356	1,257	-	-	-	-	7.3
One person household	5,814	385	78	307	-	-	-	-	6.2
pensioner	2,625	241	46	195	-	-	-	-	8.4
other	3,189	144	32	112	-	-	-	-	4.3
All pensioner family	1,493	222	35	187	-	-	-	-	12.9
Married couple family	7,205	746	190	556	-	-	-	-	9.4
no children	2,540	302	65	237	-	-	-	-	10.6
with one dependent child	1,245	116	34	82	-	-	-	-	8.5
with two or more dependent children	2,234	215	61	154	-	-	-	-	8.8
all children non-dependent	1,186	113	30	83	-	-	-	-	8.7
Cohabiting couple family	1,909	108	24	84	-	-	-	-	5.4
no children	851	62	18	44	-	-	-	-	6.8
with one dependent child	480	32	3	29	-	-	-	-	6.3
two or more dependent children	469	14	3	11	-	-	-	-	2.9
all children non-dependent	109	-	-	-	-	-	-	-	-
Lone parent family	2,753	99	19	80	-	-	-	-	3.5
with one dependent child	1,021	25	7	18	-	-	-	-	2.4
with two or more dependant children	987	19	3	16	-	-	-	-	1.9
all children non-dependent	745	55	9	46	-	-	-	-	6.9
Other households	1,219	53	10	43	-	-	-	-	4.2
with one dependent child	246	9	-	9	-	-	-	-	3.5
with two or more dependent children	257	12	6	6	-	-	-	-	4.5
all student	9	-	-	-	-	-	-	-	-
all pensioner	54	6	-	6	-	-	-	-	10.0
other	653	26	4	22	-	-	-	-	3.8

Source table from the Census: UV65 Household Composition (households)

A dependent child is a person in a household aged 0 to 15 (whether or not in a family) or a person aged 16 to 18 who is a full-time student in a family with parent(s).

Percentage of households by composition of household for the Authority and the Government Office Region.



Source table from the Census: UV65 Household Composition (households)

**Classification of household deprivation**

The classification of household deprivation on the Census is independent of the English Indices of Multiple Deprivation published by the Office of the Deputy Prime Minister. Four dimensions from the Census returns have been identified as giving an indication of household deprivation. Households are considered deprived if one or more of the following definitions applies to that household:

**Employment** – any member of the household aged 16-74 who is not a full-time student is classified as either unemployed or permanently sick.

**Education** – no member of the household aged 16 to pensionable age has at least 5 GCSE’s (grade A to C) or equivalent AND no member of the household aged 16 to 18 is in full-time education.

**Health and disability** – any member of the household has general health ‘not good’ in the year before the census or has a limiting long term illness.

**Housing** – The household’s accommodation is either overcrowded, or is in a shared dwelling, or does not have sole use of bath/shower and toilet, or has no central heating.

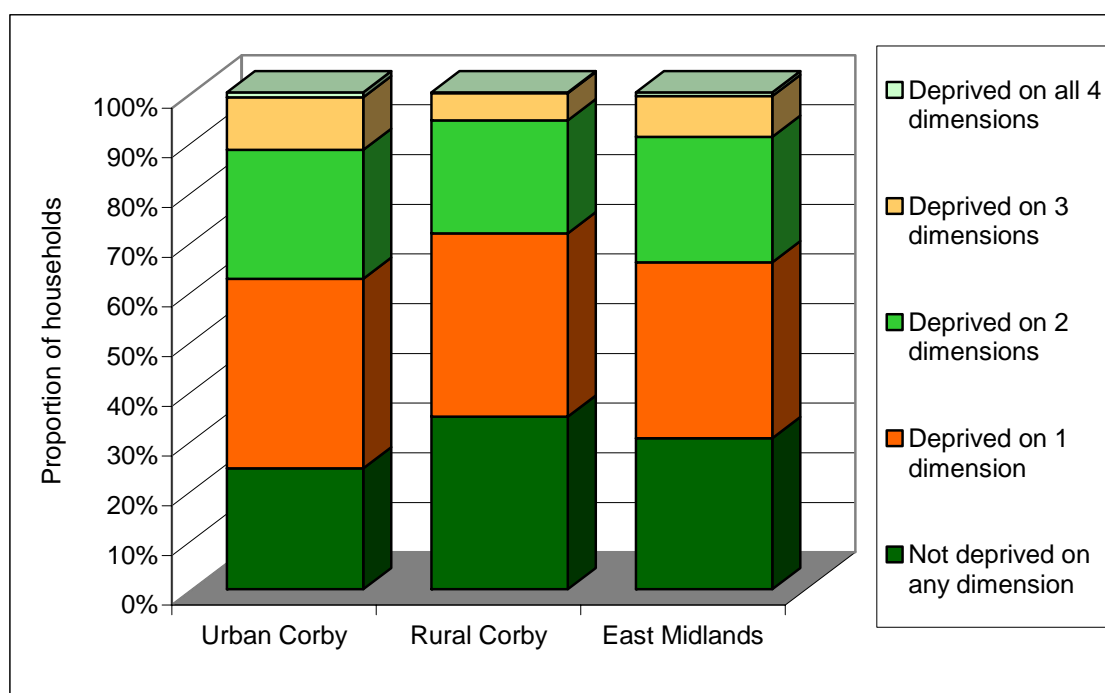


### Classification of household deprivation (number of households)

	Corby					East Midlands	
	Not deprived on any dimension	Deprived on 1 dimension	Deprived on 2 dimensions	Deprived on 3 dimensions	Deprived on all 4 dimensions	Not deprived on any dimension	Deprived on 1 or more dimensions
<b>Urban</b>	<b>4,966</b>	<b>7,775</b>	<b>5,280</b>	<b>2,169</b>	<b>203</b>	<b>357,167</b>	<b>871,295</b>
<b>Rural</b>	<b>566</b>	<b>601</b>	<b>371</b>	<b>89</b>	<b>3</b>	<b>169,588</b>	<b>334,313</b>
Less Sparse	566	601	371	89	3	165,864	322,256
Town	157	130	56	15	3	86,108	178,617
Village	409	471	315	74	-	65,540	116,914
Dispersed	-	-	-	-	-	14,216	26,725
Sparse	-	-	-	-	-	3,724	12,057
Town	-	-	-	-	-	720	2,652
Village	-	-	-	-	-	2,138	6,691
Dispersed	-	-	-	-	-	866	2,714

Source table from the Census: UV67 Classification of household deprivation

### Comparison of household deprivation in urban and rural parts of the Authority



Source table from the Census: UV67 Classification of household deprivation

### Health and provision of unpaid care

There were two measure of 'health' on the Census. In one measure respondents were asked to rate their general level of health over the last twelve months as 'good', 'fairly good' or 'not good'. The other measure was to ask respondents whether they (in their opinion) had a limiting long-term

illness (LLTI). LLTI covers any long-term illness, health problem or disability that limits daily activities or the work a person can do.

Perception of health over the 12 months preceding the Census (number of people)

	Corby				East Midlands			
	Good	Fairly good	Not good	% not good	Good	Fairly good	Not good	% not good
Urban	33,497	11,044	4,681	9.5	1,965,344	695,012	279,623	9.5
Rural	2,737	894	321	8.1	854,408	275,945	101,845	8.3

Source table from the Census: UV20 General health

Occurrence of limiting long-term illnesses (LLTI) (number of people)

	Corby			East Midlands			England
	No LLTI	LLTI	% with LLTI	No LLTI	LLTI	% with LLTI	% with LLTI
Urban	40,175	9,047	18.4	2,387,974	552,006	18.8	18.2
Rural	3,219	733	18.5	1,015,934	216,260	17.6	17.0

Source table from the Census: UV22 Long-term limiting illness

Number of people providing unpaid care

	Corby			% providing some unpaid care	
	1 to 19 hours per week	20 to 49 hours per week	50 or more hours per week	Corby	East Midlands
Urban	2,938	584	1,168	9.5	10.2
Rural	311	51	78	11.1	11.1
Towns	64	9	14	9.3	10.8
Villages	247	42	64	11.7	11.3
Dispersed	-	-	-	-	11.8

Source table from the Census: UV21 Provision of unpaid care

## Qualifications

In Corby 39.3% of the people aged 16 to 74 have no academic, vocational or professional qualifications, compared with 31.6% in the Region as a whole. 5.3% of the people with no such qualifications are in rural parts of the Authority.

### Number of people aged 16 to 74 by qualification level

	Number of people aged 16-74 within the authority that responded to the questions on qualification levels. (please see the footnotes)						Percentage with no qualifications	
	None	Level 1	Level 2	Level 3	Level 4/5	Other	Authority	GOR
Urban	14,142	7,068	6,788	1,838	2,646	2,672	40.2	32.8
Rural	796	456	634	182	572	255	27.5	28.8
Less Sparse	796	456	634	182	572	255	27.5	28.5
Town	182	94	150	58	155	55	26.2	29.7
Village	614	362	484	124	417	200	27.9	26.8
Dispersed	-	-	-	-	-	-	-	28.7
Sparse	-	-	-	-	-	-	-	-
Town	-	-	-	-	-	-	-	-
Village	-	-	-	-	-	-	-	-
Dispersed	-	-	-	-	-	-	-	-
<b>Total</b>	<b>14,938</b>	<b>7,524</b>	<b>7,422</b>	<b>2,020</b>	<b>3,218</b>	<b>2,927</b>	<b>39.3</b>	<b>31.6</b>
<b>Percentage rural</b>	<b>5.3</b>	<b>6.1</b>	<b>8.5</b>	<b>9.0</b>	<b>17.8</b>	<b>8.7</b>		

Source table from the Census: UV24 Qualifications

#### Footnotes

**None:** No academic, vocational or professional qualifications

**Level 1:** 1+ 'O' levels/CSE/GCSE (any grade), NVQ level 1, Foundation GNVQ

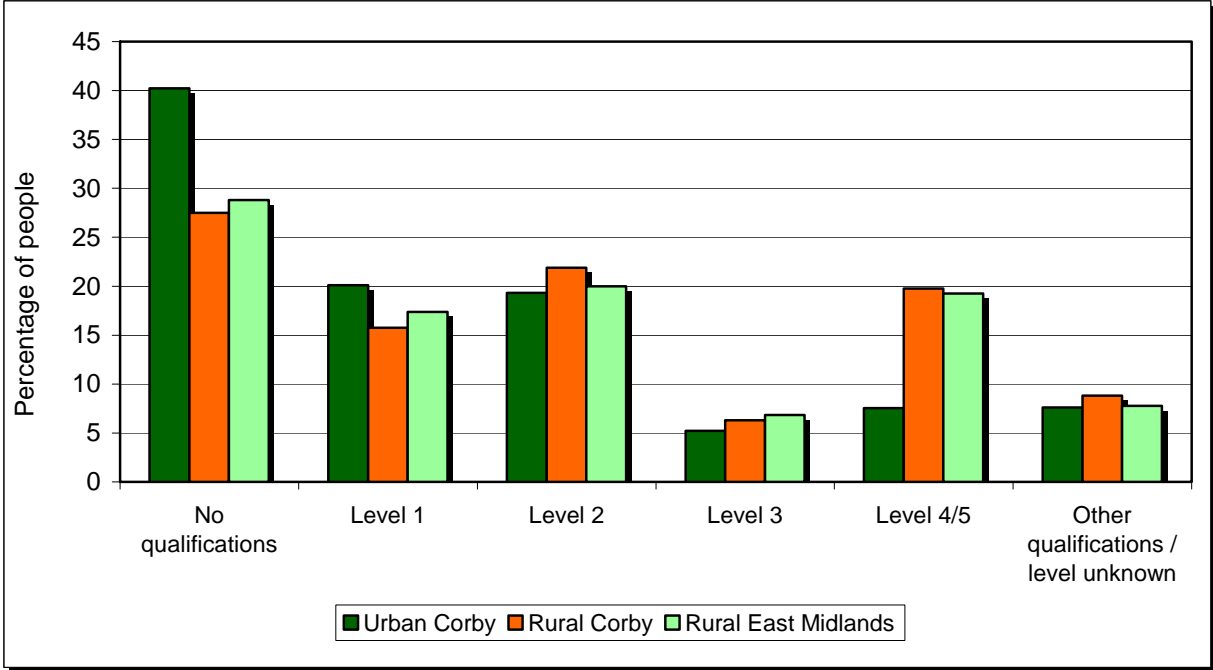
**Level 2:** 5+ 'O' levels, 5+ CSEs (grade 1), 5+ GCSEs (grade A to C), School Certificate, 1+ 'A' levels/AS levels, NVQ level 2, Intermediate GNVQ

**Level 3:** 2+ 'A' levels, 4+ AS levels, Higher School Certificate, NVQ level 3, Advanced GNVQ

**Level 4/5:** First degree, Higher degree, NVQ levels 4-5, HND, HNC, Qualified Teacher Status, Qualified Medical Doctor, Qualified Dentist, Qualified Nurse, Midwife, Health Visitor

**Other:** Other qualifications or level unknown e.g. City and Guilds, RSA/OCR, BTEC/Edexcel, other professional qualifications.

Percentage of people aged 16 to 74 with each level of qualification in the Authority and the rural part of the Government Office Region.



Source table from the Census: UV24 Qualifications

## National Statistics Socio-Economic Classification (NS-SeC)

In this table all people aged 16 to 74 are classified according to their type of occupation using the National Statistics Socio-Economic Classification. Further details of this classification system are available from the National Statistics web site at:

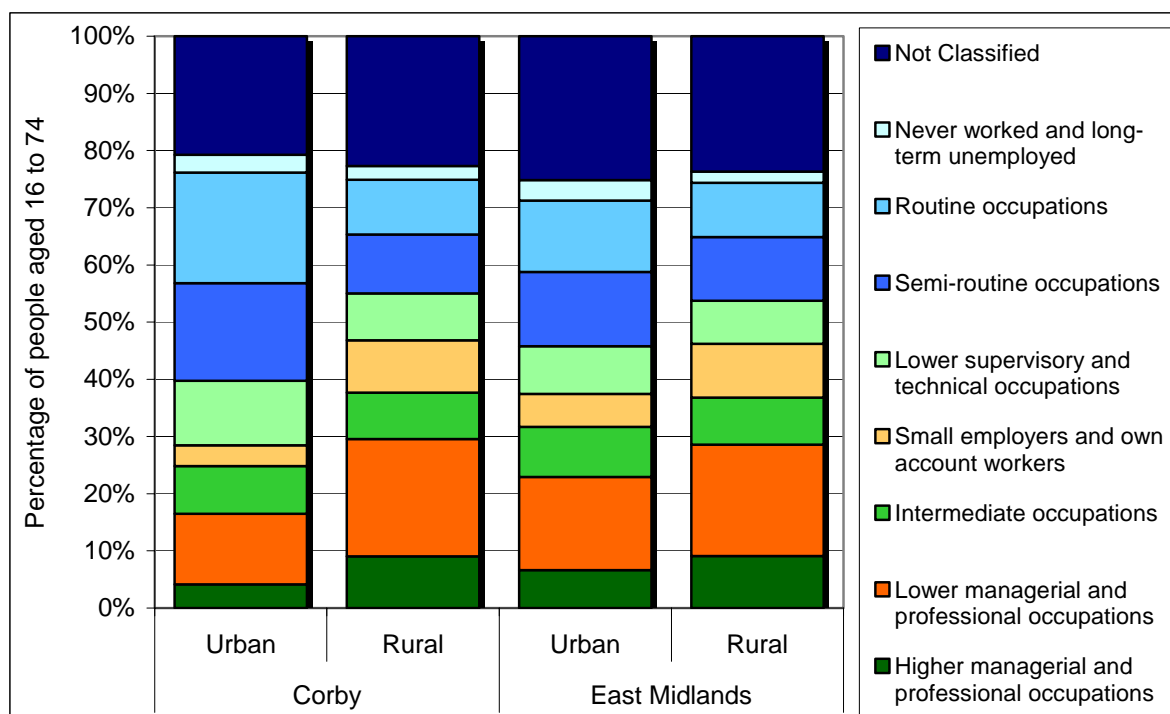
[http://www.statistics.gov.uk/methods\\_quality/ns\\_sec/default.asp](http://www.statistics.gov.uk/methods_quality/ns_sec/default.asp)

### Number of people in the Authority aged 16 to 74 by NS-SeC classification

	Corby					East Midlands	
	Urban Total	Rural			Dispersed	Urban	Rural
		Total	Towns	Villages			
Higher managerial and professional occupations	1,449	259	78	181	-	141,220	81,475
Lower managerial and professional occupations	4,354	590	156	434	-	345,354	174,674
Intermediate occupations	2,924	233	52	181	-	186,194	73,834
Small employers and own account workers	1,286	264	68	196	-	122,634	84,587
Lower supervisory and technical occupations	3,968	236	45	191	-	176,422	67,511
Semi-routine occupations	6,011	295	57	238	-	276,796	100,115
Routine occupations	6,785	276	67	209	-	264,058	84,940
Never worked and long-term unemployed	1,090	68	35	33	-	76,584	17,678
Not Classified	7,294	653	125	528	-	534,310	212,293

Source table from the Census: UV31 National Statistics Socio-economic classification

### Percentage of people in the Authority aged 16 to 74 by NS-SeC classification



Source table from the Census: UV31 National Statistics Socio-economic classification

## Economic activity and average number of hours worked

In rural Corby 31% of people aged 16 to 74 are economically inactive. 56.3% of those people are retired, 9.3% are students and 13.2% are looking after the home or family.

In comparison 30.5% of people aged 16 to 74 are economically inactive in urban Corby and 31.8% are economically inactive in rural parts of the Government Office Region.

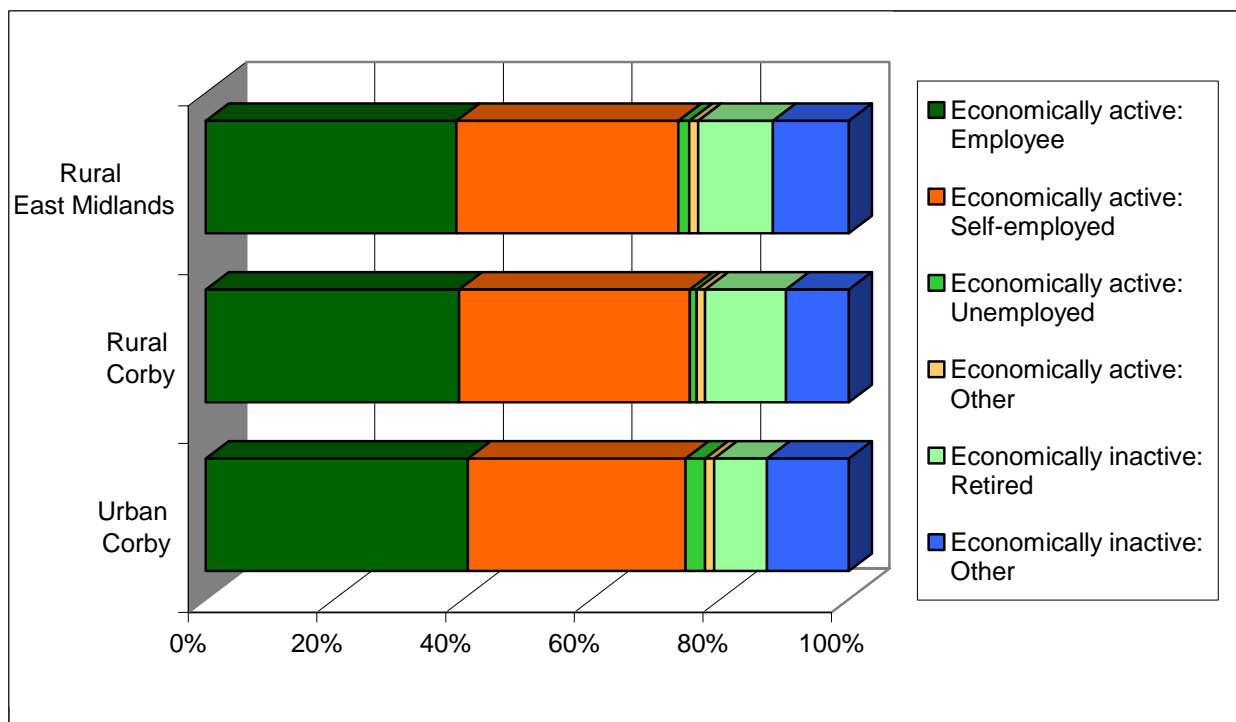
### Number of people aged 16 to 74 by economic activity

	Corby					East Midlands	
	Urban Total	Rural				Urban	Rural
		Total	Towns	Villages	Dispersed		
Economically active	24,442	1,994	504	1,490	-	1,414,615	611,715
Employee	20,816	1,577	390	1,187	-	1,144,070	475,439
Part-time	4,382	340	89	251	-	264,446	114,712
Full-time	16,434	1,237	301	936	-	879,624	360,727
Self-employed with employees	519	123	31	92	-	49,521	38,684
Part-time	90	25	7	18	-	6,983	5,636
Full-time	429	98	24	74	-	42,538	33,048
Self-employed without employees	848	198	61	137	-	85,172	59,706
Part-time	190	65	15	50	-	22,946	17,114
Full-time	658	133	46	87	-	62,226	42,592
Unemployed	1,542	43	8	35	-	77,703	21,007
Full-time Students	717	53	14	39	-	58,149	16,879
Economically inactive	10,710	894	191	703	-	708,925	285,601
Retired	4,204	503	79	424	-	285,518	141,383
Student	935	83	25	58	-	108,171	27,634
Looking after home/family	1,834	118	29	89	-	131,629	55,683
Permanently sick/disabled	2,523	136	46	90	-	120,485	39,298
Other	1,214	54	12	42	-	63,122	21,603
% economically active	69.5	69.0	72.5	67.9	-	66.6	68.2
% economically inactive	30.5	31.0	27.5	32.1	-	33.4	31.8

Source table from the Census: UV28 Economic activity

For the Census part-time working is defined as working 30 hours a week or less. Full-time is defined as working 31 or more hours a week.

Percentage of people aged 16 to 74 by economic activity



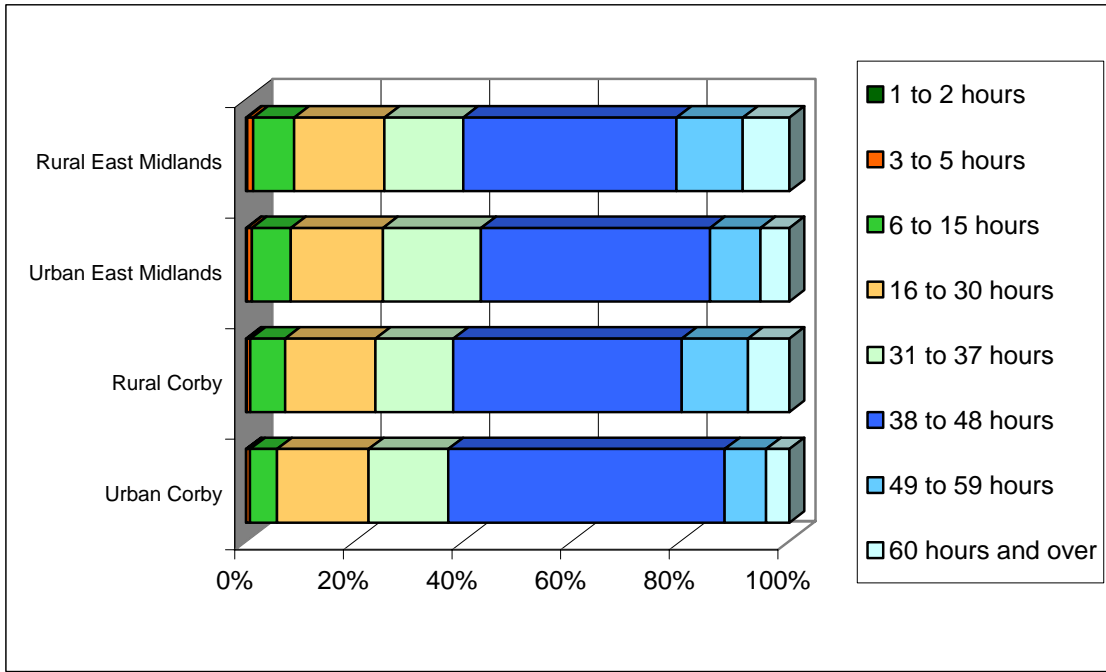
Source table from the Census: UV28 Economic activity

Number of people aged 16 to 74 in employment by number of hours worked per week

	Part-time				Full-time				Percent	
	1 to 2 hours	3 to 5 hours	6 to 15 hours	16 to 30 hours	31 to 37 hours	38 to 48 hours	49 to 59 hours	60 hours and over	Part-time	Full-time
<b>Corby</b>										
Urban	15	157	1,133	3,843	3,336	11,599	1,732	974	22.6	77.4
Rural	3	13	124	323	278	817	236	148	23.8	76.2
Less Sparse	3	13	124	323	278	817	236	148	23.8	76.2
Town	-	4	32	85	79	198	57	39	24.5	75.5
Village	3	9	92	238	199	619	179	109	23.6	76.4
Dispersed	-	-	-	-	-	-	-	-	-	-
Sparse	-	-	-	-	-	-	-	-	-	-
Town	-	-	-	-	-	-	-	-	-	-
Village	-	-	-	-	-	-	-	-	-	-
Dispersed	-	-	-	-	-	-	-	-	-	-
Total	18	170	1,257	4,166	3,614	12,416	1,968	1,122	22.7	77.3
Percentage rural	16.7	7.6	9.9	7.8	7.7	6.6	12.0	13.2		
<b>East Midlands</b>										
Urban	2,221	12,105	95,491	225,040	240,139	559,864	123,116	70,735	25.2	74.8
Rural	1,239	6,518	44,476	98,015	85,325	231,225	71,850	50,478	25.5	74.5
Total	3,460	18,623	139,967	323,055	325,464	791,089	194,966	121,213	25.3	74.7

Source table from the Census: UV41 Hours worked

Percentage of people in rural and urban parts of the Authority aged 16 to 74 in employment by number of hours worked.



Source table from the Census: UV41 Hours worked

**Employment by industry type**

The three most common industries employing people aged 16 to 74 in rural Corby are: "Manufacturing", "Wholesale and retail trade; repairs" and "Real estate, renting and business activities"



## Number of people aged 16 to 74 in employment by industry type

	Corby					East Midlands	
	Urban Total	Rural			Dispersed	Urban	Rural
		Total	Towns	Villages			
Agriculture, hunting and forestry	97	23	3	20	-	11,339	24,770
Fishing	3	3	-	3	-	81	117
Mining and quarrying	21	-	-	-	-	4,548	3,431
Manufacturing	7,875	463	100	363	-	277,184	104,604
Electricity, gas and water supply	77	9	3	6	-	11,602	4,324
Construction	1,133	138	36	102	-	89,148	42,490
Wholesale and retail trade; repairs	5,021	324	80	244	-	249,959	99,252
Hotels and restaurants	797	91	23	68	-	60,471	25,888
Transport, storage and communications	1,647	101	29	72	-	84,918	35,047
Financial Intermediation	329	48	11	37	-	41,904	16,952
Real estate, renting and business activities	2,069	222	56	166	-	135,175	64,452
Public administration and defence, social security	610	75	27	48	-	62,629	32,345
Education	972	179	52	127	-	100,115	49,435
Health and social work	1,407	194	55	139	-	142,828	60,535
Other community, social & personal service activities	699	70	19	51	-	55,983	24,409
Private households with employed persons	6	-	-	-	-	582	595
Extra-territorial organisations and bodies	-	-	-	-	-	123	263

Source table from the Census: UV34 Industry

## Accommodation and tenure

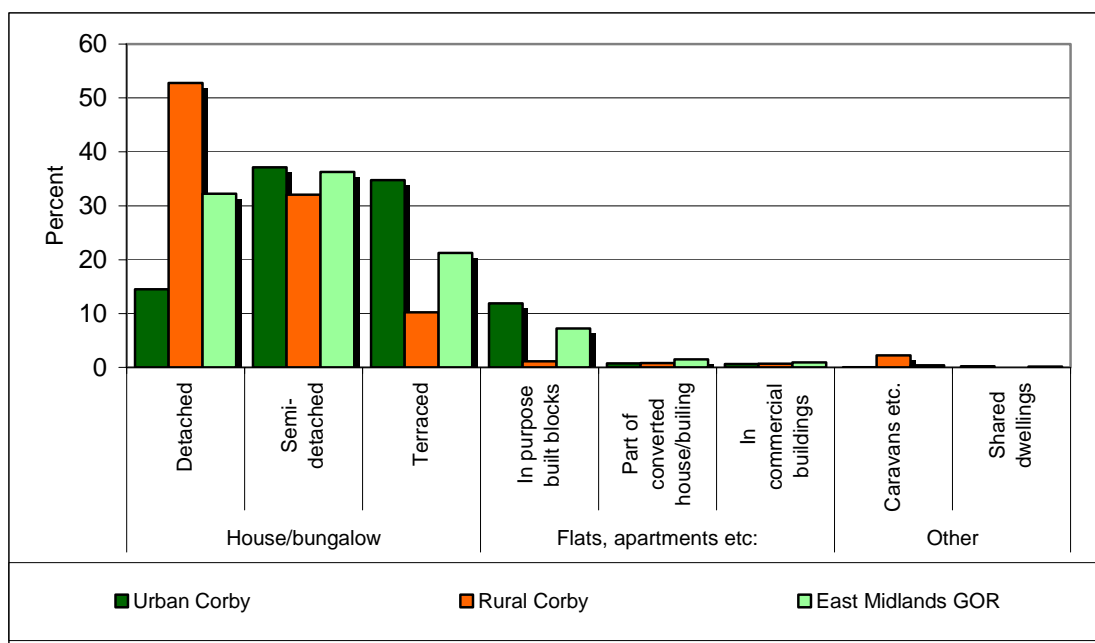
In rural Corby 95% of households live in houses or bungalows, 2.7% live in flats, apartments (and other similar properties) and 2.2% live in other types of accommodation such as shared dwellings, caravans, mobile or temporary structures. In urban Corby 86.4% of households live in houses or bungalows, 13.3% live in flats, apartments (and other similar properties) and 0.3% live in other types of accommodation such as shared dwellings, caravans, mobile or temporary structures.

## Number of households in the Authority and Government Office Region by accommodation type

	Corby					East Midlands	
	Urban Total	Rural			Dispersed	Urban	Rural
		Total	Towns	Villages			
<b>In an unshared dwelling</b>	<b>20,997</b>	<b>1,695</b>	<b>376</b>	<b>1,319</b>	-	<b>1,272,537</b>	<b>523,393</b>
House or bungalow	18,198	1,611	362	1,249	-	1,118,934	495,998
Detached	3,055	895	200	695	-	327,407	252,504
Semi-detached	7,820	543	114	429	-	479,784	172,476
Terraced (including end-terrace)	7,323	173	48	125	-	311,743	71,018
Flat; maisonette or apartment	2,790	46	11	35	-	150,715	23,079
In a purpose-built block of flats	2,508	20	-	20	-	115,177	15,099
Part of a converted or shared house	152	14	8	6	-	23,351	4,059
In a commercial building	130	12	3	9	-	12,187	3,921
Caravan, mobile or temporary structure	9	38	3	35	-	2,888	4,316
<b>In a shared dwelling</b>	<b>54</b>	-	-	-	-	<b>2,626</b>	<b>376</b>

Source table from the Census: UV56 Accommodation Type (Households)

Percentage of households in the Authority and the Government Office Region by type of accommodation.



Source table from the Census: UV56 Accommodation Type (Households)

In rural Corby 82.7% of households live in owned accommodation, 9.2% live in social rented accommodation and 5.6% live in private rented accommodation.

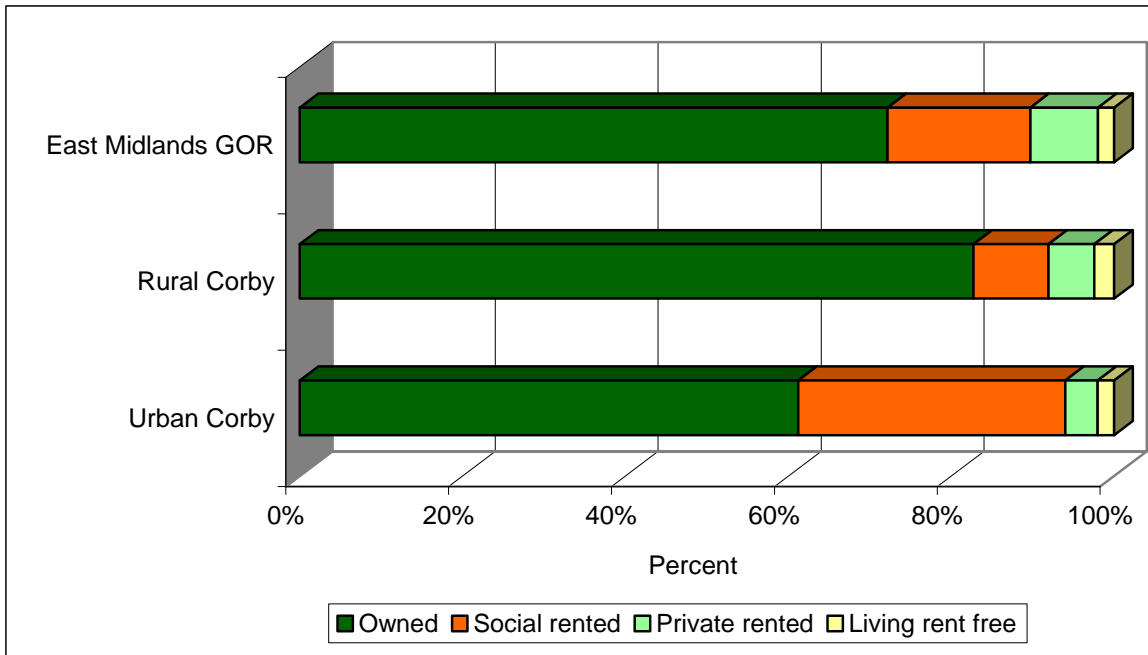
In urban Corby 61.2% of households live in owned accommodation, 32.8% live in social rented accommodation and 4% live in private rented accommodation.

Number of households in the Authority and Government Office Region by tenure

	Corby					East Midlands	
	Urban Total	Total	Towns	Villages	Dispersed	Urban	Rural
<b>Owned</b>	<b>12,446</b>	<b>1,353</b>	<b>314</b>	<b>1,039</b>	-	<b>857,921</b>	<b>392,729</b>
Owns outright	3,944	652	131	521	-	352,538	181,017
Owns with a mortgage or loan	8,433	698	183	515	-	498,104	209,356
Shared ownership	69	3	-	3	-	7,279	2,356
<b>Social rented</b>	<b>6,666</b>	<b>151</b>	<b>34</b>	<b>117</b>	-	<b>242,528</b>	<b>60,833</b>
Rented from Council (Local Authority)	6,012	128	20	108	-	191,942	47,984
Other social rented	654	23	14	9	-	50,586	12,849
<b>Private rented</b>	<b>810</b>	<b>92</b>	<b>9</b>	<b>83</b>	-	<b>105,304</b>	<b>38,736</b>
Private landlord or letting agency	664	77	9	68	-	94,575	31,618
Employer of a household member	6	3	-	3	-	1,621	2,287
Relative or friend of a household member	122	9	-	9	-	6,975	3,112
Other	18	3	-	3	-	2,133	1,719
<b>Living rent free</b>	<b>414</b>	<b>40</b>	<b>8</b>	<b>32</b>	-	<b>22,790</b>	<b>11,666</b>

Source table from the Census: UV63 Tenure (Households)

## Percentage of households by tenure



Source table from the Census: UV63 Tenure (Households)

## Car ownership

12.3% of households in rural Corby do not have a car or van available for private use. In urban parts of the Constituency it is 33.7%.

## Number of households by car/van availability to the household and the total number of cars\*

	Corby					East Midlands		Authority	GOR
	No car or van	1 car or van	2 cars or vans	3 cars or vans	4 or more cars or vans	No car or van	1 or more cars or vans	Total number of cars or vans	
Urban	6,858	9,377	3,448	559	112	346,642	881,820	18,434	1,280,841
Rural	202	672	592	123	50	73,536	430,321	2,458	713,269
Less Sparse	202	672	592	123	50	71,611	416,459	2,458	691,232
Town	33	128	161	28	15	47,494	217,235	600	342,704
Village	169	544	431	95	35	20,209	162,221	1,858	282,755
Dispersed	-	-	-	-	-	3,908	37,003	-	65,773
Sparse	-	-	-	-	-	1,925	13,862	-	22,037
Town	-	-	-	-	-	749	2,629	-	3,622
Village	-	-	-	-	-	838	7,986	-	12,863
Dispersed	-	-	-	-	-	338	3,247	-	5,552
<b>Total</b>	<b>7,060</b>	<b>10,049</b>	<b>4,040</b>	<b>682</b>	<b>162</b>	<b>420,178</b>	<b>1,312,141</b>	<b>20,892</b>	<b>1,994,110</b>
Percentage rural	2.9	6.7	14.7	18.0	30.9	17.5	32.8	11.8	35.8

Source table from the Census: UV62 Cars or Vans

\*(includes any company car or van if it is available for private use)

## **Access to Service**

The following tables give figures on the distance from rural households to ten types of services:

1. Cash machines / ATMs
2. Banks
3. GPs
4. Jobcentres
5. Libraries
6. Petrol stations
7. Post offices
8. Supermarkets
9. Primary Schools
10. Secondary Schools

## Distance to Cash Machines / ATMs and Banks

<b>Cash Machines / ATMs</b>	<2km	2-4km	4-6km	6-8km	8-10km	10-12km	12-14km	14-16km	>16km	Total
Number of rural households in the Authority within X km of a cash machine / ATM										
Less Sparse	647	520	484	-	-	-	-	-	-	1,651
Town	-	-	361	-	-	-	-	-	-	361
Village	647	520	123	-	-	-	-	-	-	1,290
Dispersed	-	-	-	-	-	-	-	-	-	-
Sparse	-	-	-	-	-	-	-	-	-	-
Town	-	-	-	-	-	-	-	-	-	-
Village	-	-	-	-	-	-	-	-	-	-
Dispersed	-	-	-	-	-	-	-	-	-	-
Rural Total	647	520	484	-	-	-	-	-	-	1,651
% of rural households										
in the Authority	39.2	31.5	29.3	-	-	-	-	-	-	100.0
in the Government Office Region	63.9	21.2	10.1	4.0	0.9	-	-	-	-	100.0

<b>Banks</b>	<2km	2-4km	4-6km	6-8km	8-10km	10-12km	12-14km	14-16km	>16km	Total
Number of rural households in the Authority within X km of a bank										
Less Sparse	51	1,156	444	-	-	-	-	-	-	1,651
Town	-	341	20	-	-	-	-	-	-	361
Village	51	815	424	-	-	-	-	-	-	1,290
Dispersed	-	-	-	-	-	-	-	-	-	-
Sparse	-	-	-	-	-	-	-	-	-	-
Town	-	-	-	-	-	-	-	-	-	-
Village	-	-	-	-	-	-	-	-	-	-
Dispersed	-	-	-	-	-	-	-	-	-	-
Rural Total	51	1,156	444	-	-	-	-	-	-	1,651
% of rural households										
in the Authority	3.1	70.0	26.9	-	-	-	-	-	-	100.0
in the Government Office Region	34.9	25.0	19.9	10.9	6.0	2.6	0.8	-	-	100.0

Source: Countryside Agency

## Distance to GPs and Jobcentres

<b>GPs</b>	<2km	2-4km	4-6km	6-8km	8-10km	10-12km	12-14km	14-16km	>16km	Total
Number of rural households in the Authority within X km of a GP										
Less Sparse	7	954	690	-	-	-	-	-	-	1,651
Town	-	-	361	-	-	-	-	-	-	361
Village	7	954	329	-	-	-	-	-	-	1,290
Dispersed	-	-	-	-	-	-	-	-	-	-
Sparse	-	-	-	-	-	-	-	-	-	-
Town	-	-	-	-	-	-	-	-	-	-
Village	-	-	-	-	-	-	-	-	-	-
Dispersed	-	-	-	-	-	-	-	-	-	-
Rural Total	7	954	690	-	-	-	-	-	-	1,651
% of rural households										
in the Authority	0.4	57.8	41.8	-	-	-	-	-	-	100.0
in the Government Office Region	53.3	27.4	14.3	3.9	1.0	0.1	-	-	-	100.0

<b>Jobcentres</b>	<2km	2-4km	4-6km	6-8km	8-10km	10-12km	12-14km	14-16km	>16km	Total
Number of rural households in the Authority within X km of a jobcentre										
Less Sparse	1	674	956	20	-	-	-	-	-	1,651
Town	-	-	341	20	-	-	-	-	-	361
Village	1	674	615	-	-	-	-	-	-	1,290
Dispersed	-	-	-	-	-	-	-	-	-	-
Sparse	-	-	-	-	-	-	-	-	-	-
Town	-	-	-	-	-	-	-	-	-	-
Village	-	-	-	-	-	-	-	-	-	-
Dispersed	-	-	-	-	-	-	-	-	-	-
Rural Total	1	674	956	20	-	-	-	-	-	1,651
% of rural households										
in the Authority	0.1	40.8	57.9	1.2	-	-	-	-	-	100.0
in the Government Office Region	4.2	11.8	22.1	22.3	17.9	9.5	7.1	3.4	1.6	100.0

Source: Countryside Agency

## Distance to Libraries and Petrol Stations

<b>Libraries</b>	<2km	2-4km	4-6km	6-8km	8-10km	10-12km	12-14km	14-16km	>16km	Total
Number of rural households in the Authority within X km of a library										
Less Sparse	1	906	624	120	-	-	-	-	-	1,651
Town	-	-	241	120	-	-	-	-	-	361
Village	1	906	383	-	-	-	-	-	-	1,290
Dispersed	-	-	-	-	-	-	-	-	-	-
Sparse	-	-	-	-	-	-	-	-	-	-
Town	-	-	-	-	-	-	-	-	-	-
Village	-	-	-	-	-	-	-	-	-	-
Dispersed	-	-	-	-	-	-	-	-	-	-
Rural Total	1	906	624	120	-	-	-	-	-	1,651
% of rural households										
in the Authority	0.1	54.9	37.8	7.3	-	-	-	-	-	100.0
in the Government Office Region	49.7	22.9	14.4	7.5	3.7	1.5	0.4	-	-	100.0

<b>Petrol Stations</b>	<2km	2-4km	4-6km	6-8km	8-10km	10-12km	12-14km	14-16km	>16km	Total
Number of rural households in the Authority within X km of a petrol station										
Less Sparse	612	919	120	-	-	-	-	-	-	1,651
Town	-	241	120	-	-	-	-	-	-	361
Village	612	678	-	-	-	-	-	-	-	1,290
Dispersed	-	-	-	-	-	-	-	-	-	-
Sparse	-	-	-	-	-	-	-	-	-	-
Town	-	-	-	-	-	-	-	-	-	-
Village	-	-	-	-	-	-	-	-	-	-
Dispersed	-	-	-	-	-	-	-	-	-	-
Rural Total	612	919	120	-	-	-	-	-	-	1,651
% of rural households										
in the Authority	37.1	55.7	7.3	-	-	-	-	-	-	100.0
in the Government Office Region	61.0	28.8	8.4	1.8	0.1	-	-	-	-	100.0

Source: Countryside Agency

## Distance to Post Offices and Supermarkets

<b>Post Offices</b>	<2km	2-4km	4-6km	6-8km	8-10km	10-12km	12-14km	14-16km	>16km	Total
Number of rural households in the Authority within X km of a post office										
Less Sparse	1,604	47	-	-	-	-	-	-	-	1,651
Town	361	-	-	-	-	-	-	-	-	361
Village	1,243	47	-	-	-	-	-	-	-	1,290
Dispersed	-	-	-	-	-	-	-	-	-	-
Sparse	-	-	-	-	-	-	-	-	-	-
Town	-	-	-	-	-	-	-	-	-	-
Village	-	-	-	-	-	-	-	-	-	-
Dispersed	-	-	-	-	-	-	-	-	-	-
Rural Total	1,604	47	-	-	-	-	-	-	-	1,651
% of rural households										
in the Authority	97.2	2.8	-	-	-	-	-	-	-	100.0
in the Government Office Region	86.9	10.5	2.1	0.5	-	-	-	-	-	100.0

<b>Supermarkets</b>	<2km	2-4km	4-6km	6-8km	8-10km	10-12km	12-14km	14-16km	>16km	Total
Number of rural households in the Authority within X km of a supermarket										
Less Sparse	51	960	640	-	-	-	-	-	-	1,651
Town	-	139	222	-	-	-	-	-	-	361
Village	51	821	418	-	-	-	-	-	-	1,290
Dispersed	-	-	-	-	-	-	-	-	-	-
Sparse	-	-	-	-	-	-	-	-	-	-
Town	-	-	-	-	-	-	-	-	-	-
Village	-	-	-	-	-	-	-	-	-	-
Dispersed	-	-	-	-	-	-	-	-	-	-
Rural Total	51	960	640	-	-	-	-	-	-	1,651
% of rural households										
in the Authority	3.1	58.1	38.8	-	-	-	-	-	-	100.0
in the Government Office Region	48.4	25.0	15.2	7.5	2.7	0.9	0.3	-	-	100.0

Source: Countryside Agency



## Distance to Primary Schools and Secondary Schools

<b>Primary Schools</b>	<2km	2-4km	4-6km	6-8km	8-10km	10-12km	12-14km	14-16km	>16km	Total
Number of rural households in the Authority within X km of a primary school										
Less Sparse	1,465	114	72	-	-	-	-	-	-	1,651
Town	289	-	72	-	-	-	-	-	-	361
Village	1,176	114	-	-	-	-	-	-	-	1,290
Dispersed	-	-	-	-	-	-	-	-	-	-
Sparse	-	-	-	-	-	-	-	-	-	-
Town	-	-	-	-	-	-	-	-	-	-
Village	-	-	-	-	-	-	-	-	-	-
Dispersed	-	-	-	-	-	-	-	-	-	-
Rural Total	1,465	114	72	-	-	-	-	-	-	1,651
% of rural households										
in the Authority	88.7	6.9	4.4	-	-	-	-	-	-	100.0
in the Government Office Region	87.3	10.8	1.8	0.1	-	-	-	-	-	100.0

<b>Secondary Schools</b>	<2km	2-4km	4-6km	6-8km	8-10km	10-12km	12-14km	14-16km	>16km	Total
Number of rural households in the Authority within X km of a secondary school										
Less Sparse	133	923	595	-	-	-	-	-	-	1,651
Town	-	-	361	-	-	-	-	-	-	361
Village	133	923	234	-	-	-	-	-	-	1,290
Dispersed	-	-	-	-	-	-	-	-	-	-
Sparse	-	-	-	-	-	-	-	-	-	-
Town	-	-	-	-	-	-	-	-	-	-
Village	-	-	-	-	-	-	-	-	-	-
Dispersed	-	-	-	-	-	-	-	-	-	-
Rural Total	133	923	595	-	-	-	-	-	-	1,651
% of rural households										
in the Authority	8.1	55.9	36.0	-	-	-	-	-	-	100.0
in the Government Office Region	34.4	27.4	19.9	10.4	4.9	2.4	0.6	0.1	-	100.0

Source: Countryside Agency

**Further information:**

All the information in this document, except the tables on “Access to Services”, has been calculated from the 2001 Census Univariate Tables for Census Output Areas published by the Office of National Statistics (<http://www.statistics.gov.uk>). Further information about the Census is available at: <http://www.statistics.gov.uk/census2001/default.asp>

There are slight differences (e.g. in total population) between tables because of imputation for non-response and disclosure issues when using Output Area data. Overall the 2001 Census achieved a 98% response rate. For further information on the quality of data at Local Authority level please see: <http://www.statistics.gov.uk/census2001/la.asp>

Each Output Area in England and Wales has been classified using the harmonised urban / rural definition published by the ONS on 2<sup>nd</sup> August 2004 in Bulletin 2004/14 ([http://www.statistics.gov.uk/geography/bulletins/bulletin2004\\_14.asp](http://www.statistics.gov.uk/geography/bulletins/bulletin2004_14.asp)). The Output Area urban/rural data was then aggregated to provide the urban / rural totals for the Local Authority, Government Office Regions and England. More information about the urban / rural definition is available at: <http://www.statistics.gov.uk/geography/nrudp.asp>

The “Access to Services” information comes from the Countryside Agency.

Defra’s website also has further information about rural affairs:  
<http://www.defra.gov.uk/rural/default.htm>

**Produced by:**

Defra, Rural Statistics Unit

Email: [rural.statistics@defra.gsi.gov.uk](mailto:rural.statistics@defra.gsi.gov.uk)

October 2004