



17 October 2013

## United Kingdom Slaughter Statistics – September 2013

### Contents

Section 1	Monthly numbers of livestock slaughtered	page 2
Section 2	Average dressed carcase weights	page 2
Section 3	Monthly volumes of meat production	page 3
Section 4	Average weekly numbers of livestock slaughtered	page 3 to page 4
Section 5	Monthly numbers of livestock slaughtered by country	page 5
Section 6	Methodology, notes and revisions policy	page 6

### Key points

This release shows the latest monthly information on the slaughtering of cattle, sheep and pigs. It also includes dressed carcase weight and meat production information. The key results for **September 2013** are given below:

- **Cattle:** UK prime cattle (steers, heifers and young bulls) slaughterings were 0.9 per cent lower than in September 2012 at 150 thousand head. Beef and veal production was 66 thousand tonnes, 4.6 per cent lower than in September 2012.
- **Sheep:** UK clean sheep slaughterings were 6.0 per cent higher than in September 2012 at 1103 thousand head. Mutton and lamb production was 25 thousand tonnes, 7.4 per cent higher than in September 2012.
- **Pigs:** UK clean pig slaughterings were 0.4 per cent higher than in September 2012 at 789 thousand head. Pigmear production was 66 thousand tonnes, 1.6 per cent higher than in September 2012.

This notice will be updated at 09:30 on 21 November 2013. Additional time series which now include weekly slaughter averages and production data can be found at <https://www.gov.uk/government/publications/cattle-sheep-and-pig-slaughter>

---

**Enquiries on this publication to:** Sarah Thompson, Department for Environment, Food and Rural Affairs, Room 301, Foss House, Kings Pool, 1 - 2 Peasholme Green, York YO1 7PX.  
Tel: ++ 44 (0)1904 455097, email:sarah.thompson@defra.gsi.gov.uk

**A National Statistics publication.** National Statistics are produced to high professional standards. They undergo regular quality assurance reviews to ensure that they meet customer needs. They are produced free from any political interference. For general enquiries about National Statistics, contact the National Statistics Public Enquiry Service: tel. 0845 601 3034 email [info@statistics.gov.uk](mailto:info@statistics.gov.uk). You can also find National Statistics on the internet at <http://www.statistics.gov.uk/>.

## Section 1: Monthly numbers of livestock slaughtered

Table 1 shows monthly estimates of the number of cattle, sheep and pigs slaughtered for meat for human consumption in the United Kingdom. The survey is run according to statistical, rather than calendar months, the number of weeks in the statistical month is specified below.

**Table 1: United Kingdom monthly numbers of livestock slaughtered** thousand head

	July 2013 5 weeks	August 2013 4 weeks	September 2013 4 weeks
Steers	78	58	72
Heifers	62	48	54
Young Bulls	35	26	24
Cows and Adult Bulls	54	43	50
Calves	7	7	9
Other Sheep and Lambs	1195	1057	1103
Ewes and Rams	196	171	168
Clean Pigs	965	771	789
Sows and Boars	23	19	20

## Section 2: Average dressed carcass weights

Table 2 shows the monthly average dressed carcass weight of livestock slaughtered for meat for human consumption in the United Kingdom.

**Table 2: United Kingdom average dressed carcass weights** kilogramme

	July 2013	August 2013	September 2013
Steers	359.2	354.6	354.7
Heifers	314.0	312.8	313.4
Young Bulls	343.1	341.7	342.9
Cows and Adult Bulls	307.5	304.9	306.2
Calves	48.1	44.6	41.8
Other Sheep and Lambs	18.7	18.7	18.8
Ewes and Rams	25.3	26.5	25.7
Clean Pigs	78.3	78.6	79.6
Sows and Boars	152.8	150.2	142.7

### Section 3: Monthly volumes of meat production

Table 3 shows the monthly volumes of meat produced in the United Kingdom. Data is shown according to statistical, rather than calendar months, number of weeks in statistical month as specified.

**Table 3: United Kingdom monthly volumes of meat production** thousand tonnes

	July 2013 5 weeks	August 2013 4 weeks	September 2013 4 weeks
Beef	76	58	66
Mutton and Lamb	27	24	25
Pigmeat	79	63	66

### Section 4: Average weekly numbers of livestock slaughtered

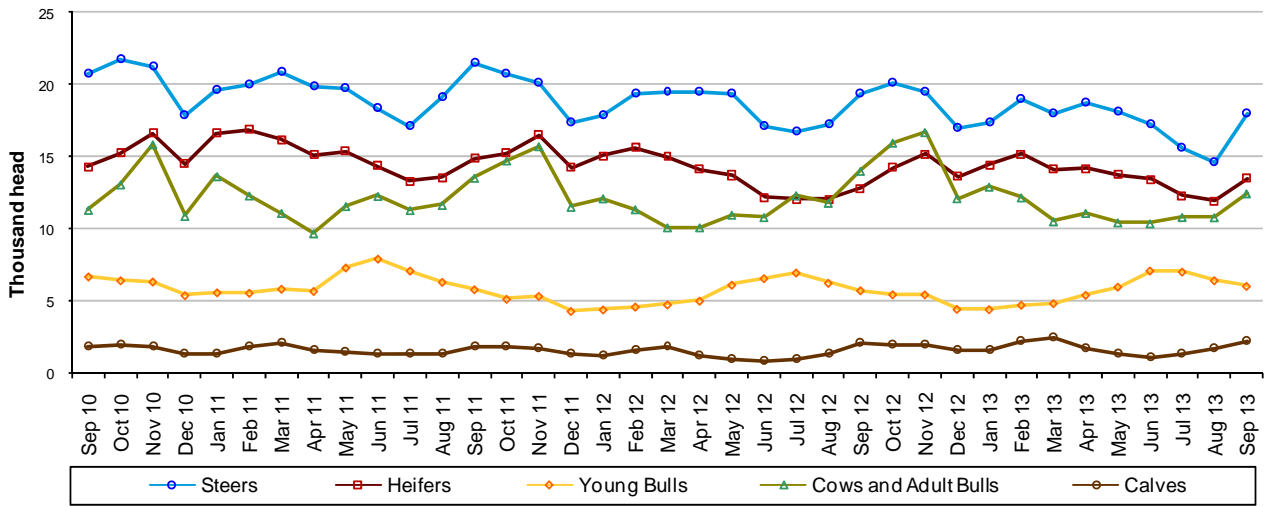
Table 4 shows the average weekly slaughter figures for the last thirteen months. The monthly slaughter figures in section one are affected by the number of weeks in the statistical month. To get a clearer measure of trends weekly averages are calculated by dividing the number of livestock slaughtered each month by the number of weeks in the statistical month.

Longer term trends can be seen in Figures 4:1, 4:2 and 4:3, following this table.

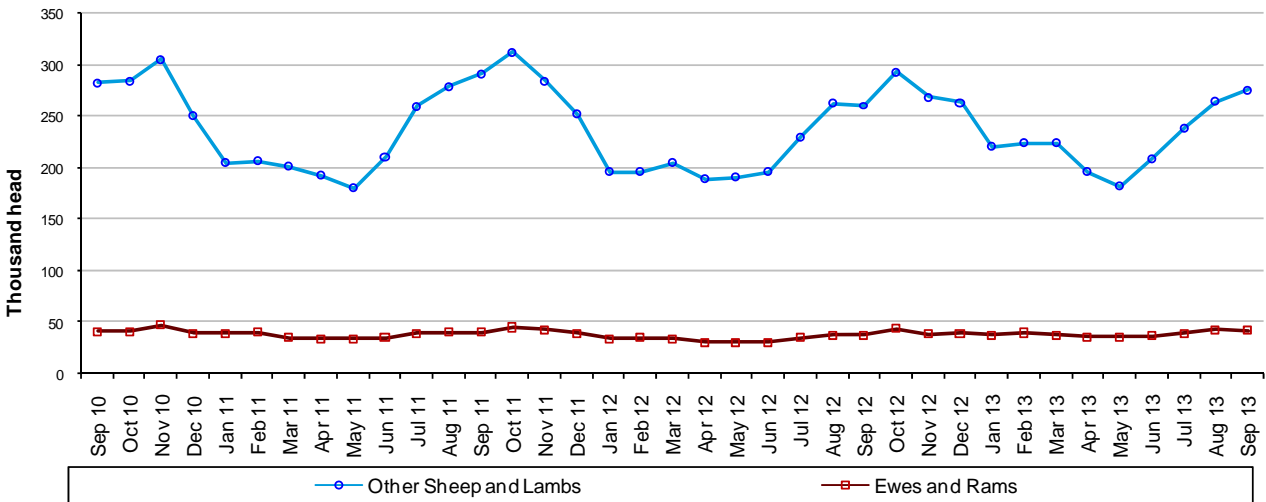
**Table 4: United Kingdom average weekly numbers of livestock slaughtered** thousand head

	2012				2013								
	Sep	Oct	Nov	Dec	Jan	Feb	Mar	Apr	May	Jun	Jul	Aug	Sep
Steers	19	20	20	17	17	19	18	19	18	17	16	15	18
Heifers	13	14	15	14	14	15	14	14	14	13	12	12	13
Young Bulls	6	5	5	4	4	5	5	5	6	7	7	6	6
Cows and Adult Bulls	14	16	17	12	13	12	10	11	10	10	11	11	12
Calves	2	2	2	2	2	2	2	2	1	1	1	2	2
Other Sheep and Lambs	260	293	268	263	220	224	224	196	182	209	239	264	276
Ewes and Rams	37	44	38	39	38	40	37	35	36	37	39	43	42
Clean Pigs	197	201	208	192	189	197	192	189	183	186	193	193	197
Sows and Boars	6	5	5	4	5	5	5	5	5	5	5	5	5

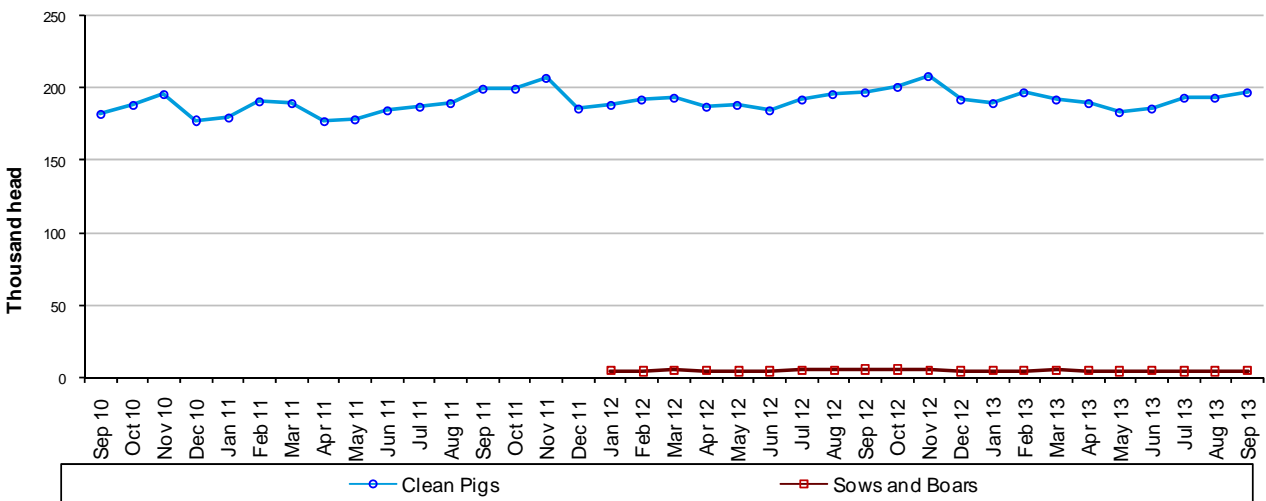
**Figure 4:1 United Kingdom average weekly numbers of cattle slaughtered**



**Figure 4:2 United Kingdom average weekly numbers of sheep slaughtered**



**Figure 4:3 United Kingdom average weekly numbers of pigs slaughtered**



Data for Sep 10 – Dec 11 is confidential

## Section 5: Monthly numbers of livestock slaughtered by country

Table 5 shows monthly estimates of the number of cattle, sheep and pigs slaughtered for meat in England and Wales, Scotland, Great Britain and Northern Ireland. Data are shown in statistical months, rather than calendar months. The totals for the countries may not add up to the Great Britain totals or the United Kingdom totals in section one, due to rounding.

**Table 5: United Kingdom monthly numbers of livestock slaughtered by country**

	thousand head		
	July 2013	August 2013	September 2013
	5 weeks	4 weeks	4 weeks
<b>England &amp; Wales</b>			
Steers	49	35	45
Heifers	38	29	33
Young Bulls	22	16	16
Cows and Adult Bulls	39	30	37
Calves	6	6	8
Other Sheep and Lambs	1038	906	937
Ewes and Rams	189	165	162
Clean Pigs	787	624	644
Sows and Boars	23	19	20
<b>Scotland</b>			
Steers	18	14	15
Heifers	14	11	12
Young Bulls	6	4	3
Cows and Adult Bulls	6	5	6
Calves	0	0	0
Other Sheep and Lambs	112	111	120
Ewes and Rams	3	3	3
Clean Pigs	27	19	20
Sows and Boars	0	0	0
<b>Great Britain</b>			
Steers	67	49	60
Heifers	52	40	45
Young Bulls	28	20	19
Cows and Adult Bulls	45	35	42
Calves	6	6	8
Other Sheep and Lambs	1150	1017	1057
Ewes and Rams	192	168	165
Clean Pigs	814	643	664
Sows and Boars	23	19	20
<b>Northern Ireland</b>			
Steers	11	9	11
Heifers	10	8	8
Young Bulls	7	6	5
Cows and Adult Bulls	9	8	7
Calves	1	1	1
Other Sheep and Lambs	45	40	46
Ewes and Rams	4	3	3
Clean Pigs	150	128	125
Sows and Boars	0	0	0

## Section 6: Methodology, notes and revisions policy

1. The information in this notice is used by the UK government and the EU as evidence for assessing market conditions and evaluating agricultural policy. The slaughter statistics are also required by the EU under Regulation (EC) No 1165/2008. Other users include the food and farming industry, academia and the general public. Contact details are available on the front page of this notice, for you to send feedback or ask questions about the information provided.
2. Defra runs a monthly survey of registered England and Wales slaughterhouses. It is a statutory survey (approximately 105) that collects information on livestock slaughter numbers and weight of meat produced. All major slaughterhouses participate in the survey and the response rate is typically 100%. These data are supplemented by administrative data for smaller slaughterhouses. Similar surveys are run by RERAD in Scotland and by DARD in Northern Ireland. The England and Wales slaughter survey accounts for around 90% of the E&W slaughterhouse throughput for each livestock type.
3. Information on the weight of meat produced from a sample of animals weighed at slaughterhouses is obtained from survey respondents, around 55 slaughterhouse respondents. From the information provided average dressed carcass weights for each animal type are primarily calculated by adding up the total weight of the meat produced and dividing by the number of animals weighed. Cold dressed carcass weights are recorded.
4. The volume of meat production is estimated from the number of all livestock slaughtered and average dressed carcass weight information collected. This total 'Home killed' production includes livestock imported into the United Kingdom for slaughter.
5. The data are subject to a variety of validation checks which identify inconsistencies in the data. All data are cleaned prior to publication in discussion with the survey respondents.

### Revisions policy

6. Figures in this notice are provisional and subject to revision. We will provide information about any revisions we make to previously published information in this statistics notice and the associated datasets. Revisions could occur for various reasons, including:
  - a. if we have not received survey data from respondents we make an estimate based on their previous returns. These estimates will be replaced with actual survey data when it is received.
  - b. survey respondents occasionally supply amended figures for previous periods.
  - c. if we have not received administrative data for the smaller slaughterhouses we make an estimate based on previous data received. These estimates will be replaced with actual data when it is received.
7. **This month minor revisions have been made to the data from June 2013 onwards for the reasons given above.**