



department for  
culture, media  
and sport



THE  
WOLFSON  
FOUNDATION

## DCMS/Wolfson Museums and Galleries Improvement Fund A Public-Private Partnership (2002-2010)



**DCMS aims to improve the quality of life for all through cultural and sporting activities, support the pursuit of excellence, and champion the tourism, creative and leisure industries.**

**The Wolfson Foundation is a charity that awards grants to support excellence in the fields of science and medicine, health, education and the arts & humanities.**

# Contents

<b>Foreword</b>	<b>04</b>
Ed Vaizey MP, Minister for Culture, Communications and Creative Industries, Department for Culture, Media and Sport	
Paul Ramsbottom, Chief Executive, the Wolfson Foundation	
<b>The DCMS/Wolfson Museums and Galleries Improvement Fund</b>	<b>06</b>
<b>Case Studies</b>	
Beamish, the North of England Open Air Museum	<b>08</b>
Birmingham Museum & Art Gallery	<b>12</b>
Harris Museum & Art Gallery	<b>14</b>
National Maritime Museum	<b>18</b>
Museum of London	<b>20</b>
Pitt Rivers Museum, University of Oxford	<b>24</b>
The Royal Armouries, Leeds	<b>26</b>
Norfolk Museums Service	<b>30</b>
<b>Appendix A</b>	<b>32</b>
Breakdown of awards	
<b>Appendix B</b>	<b>35</b>
Alphabetical list of institutions which have received awards	

# Foreword



This publication celebrates eight years of the work of the DCMS/Wolfson Fund and its investment in projects which have made a real difference to displays, interpretation and public access in museums and galleries throughout England.

The projects featured here are only a selection from the many awards which have been made since 2002, but they show the range of collections that the Fund has supported, and the ways in which new displays bring objects and their histories to life for visitors. These projects have also made the experience of visiting museums and galleries more welcoming, enjoyable and accessible for everyone.

We know from the museums and galleries themselves that DCMS/Wolfson awards can help to unlock other sources of funding, and that over a period of years, they can make a significant impact on the public face of an institution. Most importantly, the DCMS/Wolfson Fund shows that the public sector and a private philanthropic charity can work together to deliver tangible benefits for the public, in this case by helping improve the quality of their visit to a museum.

This publication records the second cycle of the Fund's work during 2002-10. I am very pleased that funding is now in place to enable a third cycle during 2011-15 and look forward to the continuing partnership between DCMS and the Wolfson Foundation. I should also like to take this opportunity to express my profound gratitude to the Trustees and Staff of the Wolfson Foundation for their enduring support for museums and for public life.

It is with sadness we note that Lord Wolfson, a key figure in the Foundation's history and Chairman since 1972, passed away at the end of the period covered by this report.

**Ed Vaizey MP**  
**Minister for Culture, Communications and Creative Industries**

# Foreword

The achievement of the DCMS/Wolfson Fund has been significant. The programme has spanned an eight-year period with a total investment of £28 million. Each project has aimed to improve the experience of the visitor. For some organisations, especially the smaller ones, the overall impact of funding has been transformative.

Perhaps above all the programme's hallmark has been partnership. It is a rare example of joint decision-making between a philanthropic charity and the public sector: with recommendations of the expert Panel made to the Trustees of the Wolfson Foundation and Government Ministers. That the programme has worked so efficiently is due in no small part to the administrators at DCMS and the expert Panel, to whom we extend our gratitude.

The Wolfson Foundation is a charity that aims to support excellence, particularly in underfunded areas, and the programme has sat neatly within the Foundation's wider strategy. It emphasised access to this country's outstanding, designated collections. It focused on a key area – refurbishment work – relatively neglected by funders (and perhaps even viewed as unglamorous). And the funds have helped to act as a catalyst, drawing in other monies from national and local sources. Indeed the requirement to raise at least a third of the project costs from other funders was a condition of the programme across all eight years.

The proof of any investment is, of course, the 'return'. The assessment provided across the following pages shows the success of the programme in the short-term, and we hope that the benefits will be felt by visitors to these wonderful institutions for many years to come.

We are delighted that, building on this success, we are in a position to announce the continuation of the DCMS/Wolfson Fund.

**Paul Ramsbottom**  
**Chief Executive, Wolfson Foundation**



# The DCMS/Wolfson Museums and Galleries Improvement Fund

The DCMS/Wolfson Fund was originally set up in 1990 and ran for five years, distributing £19 million to over 200 projects across England. The current incarnation of the Fund began in 2002 and has awarded £28 million to 245 projects over an eight-year period. This publication concentrates on the work of the Fund since 2002, and includes case studies from a variety of museums and galleries across England, which provide further insight into what the Fund has helped to make possible.

The DCMS/Wolfson partnership has become an excellent example of what can be achieved when public funds are matched with private philanthropy. The Fund, financed equally by the Department for Culture, Media and Sport (DCMS) and the Wolfson Foundation, has had a hugely positive impact on the museum community and it has become a much valued source of sustained funding.

The eighth and most recent round of DCMS/Wolfson awards was announced in August 2009 and the Fund was paused in 2010 to provide an opportunity for its work to be assessed. This evaluation showed that the Fund is highly regarded, and has enabled a wide range of museums to make capital improvements to their displays, enhance their educational facilities and provide greater accessibility to visitors. Awards from the Fund have also acted as a catalyst for further support, allowing institutions to approach successfully additional funders. This has been particularly helpful to a number of smaller museums who have noted that without their DCMS/Wolfson award, they would have found it difficult to secure additional support.

On 18 February 2011, Ed Vaizey, the Minister for Culture, Communications and Creative Industries announced that DCMS and the Wolfson Foundation would each provide £4 million to enable the DCMS/Wolfson Fund to hold two bidding rounds in the 2011-15 spending period, each awarding £4 million.

## Acknowledgements

The Panel of the DCMS/Wolfson Fund would like to thank all those who have assisted with the Fund and who have helped to make it such a success. During the eight-year lifespan of the current Fund, the following people were members of the Panel, alongside Government officials:

Hon Mrs Janet Wolfson de Botton CBE (Trustee, Wolfson Foundation)

Lord Quinton FBA (Trustee, Wolfson Foundation)

Lord Quirk CBE FBA (Trustee, Wolfson Foundation)

Dr Victoria Harrison (previous Chief Executive, Wolfson Foundation)

Paul Ramsbottom (current Chief Executive, Wolfson Foundation)

Stuart Davies (Resource)

Hedley Swain (Museums, Libraries and Archives Council)

Sue Wilkinson (Museums, Libraries and Archives Council)

Giles Waterfield (External Advisor)

## Purpose and Procedure

The purpose of the Fund has been to:

- renovate and improve the display of exhibits in galleries and exhibition spaces;
- make improvements to public spaces and access to the collection;
- make physical improvements to access and facilities for disabled visitors;
- make physical improvements to collection interpretation;
- make improvements to environmental controls in public access spaces and galleries.

Applications from eligible museums and galleries were considered by the Fund's Panel, comprising representatives of the Wolfson Foundation, DCMS, the Museums, Libraries and Archives Council and an external advisor. The Panel's recommendations were then presented to the Trustees of the Wolfson Foundation at one of their full Trustee meetings, and to the Secretary of State for Culture, Media and Sport for a final decision.

# Beamish, the North of England Open Air Museum

## Projects:

Period Lamp Cabin and Colliery Yard Improvements

## DCMS/Wolfson Fund grants:

£40,000 (Yard Works)

£145,000 (Lamp Cabin)

## Year of grants:

2006-7 (Yard Works)

2007-8 (Lamp Cabin)

## Other funders:

One North East

European Regional Development Fund

Heritage Lottery Fund

Esmée Fairbairn Foundation

Preservation of Industrial and Scientific Material Fund (PRISM)

K Hoole Trust

Beamish Development Trust

Friends of Beamish Museum

Banks Foundation

Charles Hayward Trust

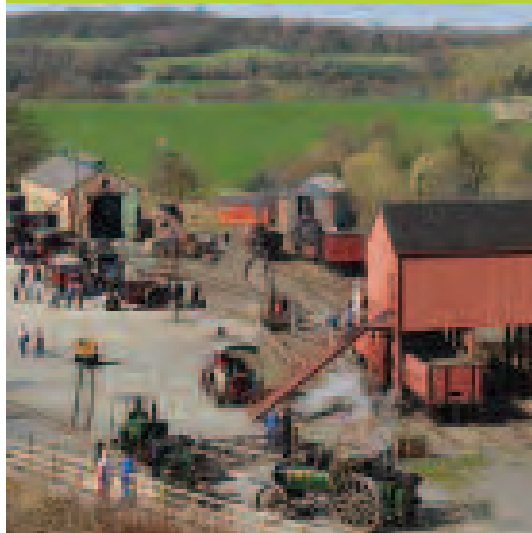
The Colliery Village at Beamish is built around the recreation of a typical North East England coal mine in the early 1900s. The DCMS/Wolfson Fund has enabled the Museum to improve dramatically the working exhibits in this village, helping Beamish transform the way it brings the social history of the northern pit communities to life for audiences today.

A grant of £145,000 allowed the Museum to move valuable mining lamp collections out of store and into a working Lamp Cabin exhibit in the Open Air Museum. Visitors are now able to understand the important role of safety lamps in pit community life. Within the Cabin, visitors first discover how the lamps were cleaned, maintained and lit before going underground to experience a real drift mine.

A second grant from the Fund, totalling £40,000, also enabled the Museum to refurbish its working Pit Yard, repairing rail track that passes underneath a reconstructed pit head, to increase steam locomotive performances for visitors.

The Museum has stated that these improvements would not have been possible without support from the DCMS/Wolfson Fund. As well as making physical improvements, allowing increased accessibility to the Village site and its collections, the grant has helped the Museum improve its link to former pit communities throughout the North. Through the development of the exhibitions within the Colliery Village, the Museum is now able to demonstrate its relevance to an audience that does not typically visit museums, helping them to understand important events in the history of their community. For example, in February 2009, 5,000 visitors came from the nearby community of Stanley to commemorate the centenary of the Stanley Pit Disaster. The Disaster, which killed 168 men and boys, played a pivotal role in the development of the miners' safety lamp. The new Cabin played a central role in this ceremony.

Beamish Museum received £40,000 in 2006-7 for works to its Colliery Yard. © Beamish Museum





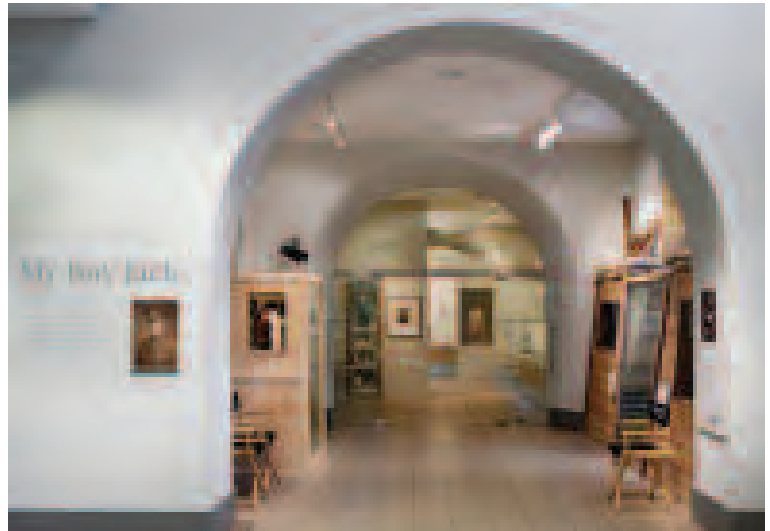


In 2007-8, Beamish Museum received £145,000 for its Period Lamp Cabin. © Beamish Museum

## The Imperial War Museum London

The Imperial War Museum London was awarded £80,000 in 2007-8 to create two new temporary exhibition galleries. The illustration shows *My Boy Jack*, an exhibition about Rudyard Kipling's only son John, killed at the Battle of Loos in 1915, which ran from 6 November 2007-24 February 2008.

© Imperial War Museum



## Merseyside Maritime Museum

Visitors reminisce at *Spirit of the Blitz* in the Merseyside Maritime Museum's new Special Exhibitions Suite, for which National Museums Liverpool received £200,000 in 2002-3.

©National Museums Liverpool



## **Oxford University Museum of Natural History**

In 2002-3 the Oxford University Museum of Natural History received £165,000 for the refurbishment and redisplay of its Great Court and Arcades. © Oxford University Museum of Natural History

# Birmingham Museum & Art Gallery

**Project:**  
Making Sense The *In Touch* Gallery

**DCMS/Wolfson Fund grant:**  
£217,000

**Year of grant:**  
2004-5

**Other funders:**  
Birmingham City Council  
Renaissance West Midlands

Birmingham Museum & Art Gallery is home to one of the world's finest collections of Pre-Raphaelite art, as well as extensive collections of fine and applied art, social history, archaeology and ethnography.

A DCMS/Wolfson Fund award of £217,000 in 2004-5 enabled the Museum to improve and clarify the presentation of its art galleries and has helped engage visitors with its designated collections in a new and lasting way. Through the development of accessible, high quality displays, supported by the DCMS/Wolfson Fund, the Museum has been able to respond to visitor demands for more hands-on exhibits and learning opportunities within an attractive and fun environment. The *In Touch* Gallery is particularly aimed at families, first-time visitors with little knowledge of art, and disabled visitors who were all shown to respond more favourably to audio, audio-visual and tactile approaches.

Intended as an introduction to the Museum's art collection, this interactive gallery features a broad range of art forms including paintings, sculpture, costumes, textiles, jewellery, ceramics and also an impressive Japanese Samurai suit of armour. One of the centrepieces of the new gallery is a huge replica mountain inspired by Tobias Verhaecht's painting, *Orpheus Returning from the Underworld*. This installation creates a significant 'wow' factor and allows visitors to literally 'get into' the picture. Visitors can also take advantage of a rare opportunity to touch original bronze busts by some of Britain's most famous sculptors, including three works by Jacob Epstein. The busts have been specially conserved and treated so that they will not be damaged when gently handled.

In its first two years, the new gallery attracted over 175,000 visitors and ongoing evaluation of these numbers has indicated that 40-50% of these were visiting for the first time.



*In Touch* Gallery, Birmingham Museum & Art Gallery. © Birmingham Museum & Art Gallery

*Orpheus Returning from the Underworld* installation, *In Touch* Gallery, Birmingham Museum & Art Gallery. © Birmingham Museum & Art Gallery



**“Wonderfully interactive and thought provoking, thank you very much!”**

*A visitor comment*

*In Touch* Gallery, Birmingham Museum & Art Gallery.  
© Birmingham Museum & Art Gallery



# Harris Museum & Art Gallery

## Project:

The Mrs French Scent Bottle Collection:  
Improving access, storage and  
interpretation

DCMS/Wolfson Fund grant:  
£30,000

Year of grant:  
2005-6

## Other funders:

Heritage Lottery Fund  
The Harris Trust  
Friends of the Harris Museum  
& Art Gallery

The Mrs French Scent Bottle Collection is the largest collection of its kind in Britain and one of the most important in the world. The collection was acquired by the Harris Museum & Art Gallery in 1964. It consists of 2,748 historic bottles, collected by Mrs French over her lifetime (1880-1964) – a passion which accelerated after the death of her only child in 1941. The items, made from ceramic, glass, silver and other materials, date mainly from the 1740s to the 1940s and offer a fascinating and inspirational diversity of colour, size and theme.

For many years, less than 20% of the scent bottle collection was on public display, leaving 80% in the Museum's basement store. Access was by appointment only and was in an area not suitable for groups or wheelchair users.

The DCMS/Wolfson Fund award of £30,000 has enabled the Museum to display the collection in its entirety, with the highlights picked out in the tops of the display cases and the rest of the collection available for exploration in secure glazed drawers underneath. The cases are at a height suitable for both the displayed and stored scent bottles to be seen easily by both wheelchair users and children. Interpretation has been improved and the Museum has reinvigorated its scent bottle tours which are taken by trained volunteers. Children's tours have also been developed along a treasure hunt theme, enabling children to use torches and magnifying glasses to identify specific bottles and look at detailed designs.

In 2009-10 the Museum received over 245,000 visitors, a substantial increase on the 141,000 in 2005-6 when the original DCMS/Wolfson Fund application was made. Whilst this is due to a variety of factors, the Museum considers the vibrant new scent bottle displays to have contributed to attracting a considerable number of both new and repeat visitors.



Open storage of the Mrs French Scent Bottle Collection, Harris Museum & Art Gallery.  
© Harris Museum & Art Gallery

**“The DCMS/Wolfson Fund has enabled us to complete several successful projects which provide public benefits that we would have been unable to find funds for elsewhere.”**

**Harris Museum & Art Gallery**

Scent bottles on display in the new Ceramics and Glass Gallery, Harris Museum & Art Gallery. © Harris Museum & Art Gallery



**“It is often the smaller grants (say, £10,000 - £50,000) that are very valuable to us as they enable us to lever in other grants.”**

**Harris Museum & Art Gallery**

A selection of the Mrs French Scent Bottle Collection, Harris Museum & Art Gallery. © Harris Museum & Art Gallery







## **The Ashmolean Museum, University of Oxford**

The Ashmolean Museum received £230,000 in 2008-9 for improvements to its Western Art Galleries.  
© Ashmolean Museum, University of Oxford





## **The Victoria and Albert Museum**

The Victoria and Albert Museum's Robert H N Ho Family Foundation Gallery of Asian Buddhist Sculpture was awarded £300,000 in 2007-8. © V&A Images

# National Maritime Museum

**Project:**  
The Atlantic Worlds Gallery

**DCMS/Wolfson Fund grant:**  
£135,000

**Year of grant:**  
2006-7

**Other funders:**  
The Museum  
Charitable organisations  
Other sponsors

In 2006-7 the National Maritime Museum received a DCMS/Wolfson Fund grant of £135,000 towards the cases and lighting in their new permanent Atlantic Worlds Gallery. This Gallery tells the story of the exploration and navigation of the whole Atlantic Ocean, bringing Europeans into contact with Africa and the Americas, setting in motion a world-changing process of conquest and exploitation, trade and cultural change.



The National Maritime Museum received £135,000 for its Atlantic Worlds Gallery in 2006-7. © National Maritime Museum

The Gallery supports the national initiative *Understanding Slavery*, of which the National Maritime Museum is the lead partner. This is a five-year national education project to promote and support the effective teaching of the history and legacies of the transatlantic slave trade in schools and communities through resources that fully reflect the many historical and contemporary perspectives on this major part of world history. The *Understanding Slavery* initiative has enabled the National Maritime Museum to work with teachers, educators and young people to develop new learning programmes and resources. The initiative has been characterised by close collaboration between curators and educators, exploring how the Museum's slavery-related material can be explored and interpreted to inspire and inform a way of working with collections that is influenced by diverse audience perspectives.



Atlantic Worlds Gallery. © National Maritime Museum

# Museum of London

**Project:**  
Medieval London Gallery

**DCMS/Wolfson Fund grant:**  
£200,000

**Year of grant:**  
2003-4

**Other funders:**  
City of London Corporation  
City Livery Companies  
Other charitable trusts

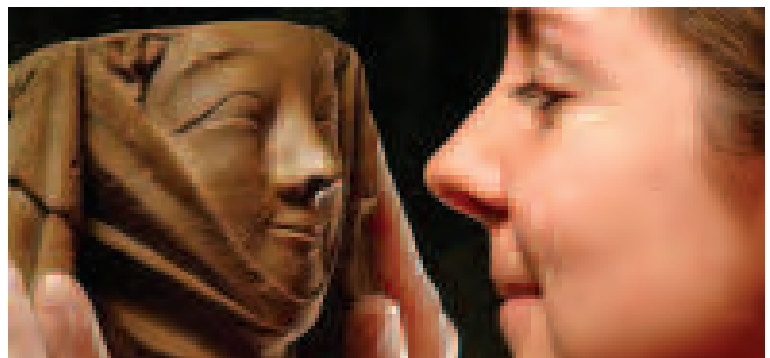
The Museum of London was awarded a grant of £200,000 in 2003-4 towards the redevelopment of its Medieval London Gallery, which had not been refurbished since 1976.

The new Gallery opened in autumn 2005 and has enabled the Museum to display one of its most celebrated collections in an interesting and informative way. It has allowed the Museum to reflect the change in modern historical and archaeological research by taking a much broader view of the medieval period – from the end of the Roman period in around 410 AD to the early Tudors in 1558 AD. Within the Gallery the visitor can explore the Anglo-Saxon settlement of the 7th century, learn about Viking raids and the Black Death before investigating the 16th-century capital and the dramatic results of Henry VIII's dissolution of the monasteries.

With this project, the Museum realised its aim of displaying excavated material not seen by the public before, such as a reconstructed section of a Thames waterfront revetment found in Billingsgate. Over the last 30 years, major additions have been made to the medieval collections, particularly of small metalwork, from the activities of Thames mud larks (licensed metal-detectorists searching the Thames foreshore), and these are now on display.



Above: Children in front of Viking weapons in the Medieval London Gallery  
© Museum of London



Right: Nun 1300 meets curator 2005  
© Museum of London

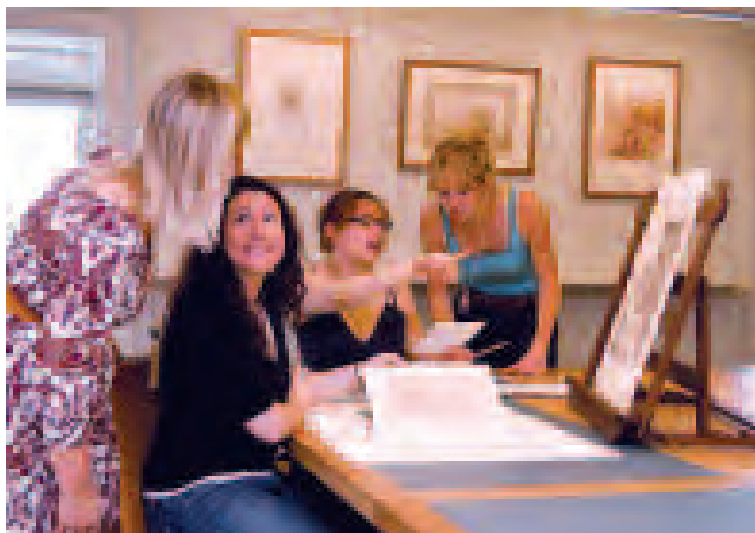
For the first time the Museum has used captions especially designed for children, featuring cartoon figures. These have been a great success and the Museum has adopted these for its new Galleries of Modern London (also supported by the DCMS/Wolfson Fund and opened in May 2010). An immersive reconstruction of a Saxon house, replica costume for children to dress up in, and interactive games such as the *Medieval Game of Life* were also included in the redevelopment and have allowed the Museum to explore new ways of engaging young visitors.



Pilgrim Badge display © Museum of London

## The Tank Museum, Bovington

The Tank Museum, Bovington, was awarded £200,000 in 2008-9 towards the fit-out of their new 50,000 ft<sup>2</sup> exhibition, *The Tank Story*. © The Tank Museum



## The Courtauld Institute of Art

In 2004-5 the Courtauld Institute Gallery received £63,000 for their Prints and Drawings Study Room.

© The Courtauld Institute of Art



## **MOSI (Museum of Science and Industry)**

MOSI (Museum of Science and Industry) was awarded £148,000 in 2004-5 for the redisplay of its Power Hall. © MOSI (Museum of Science and Industry)

# Pitt Rivers Museum, University of Oxford

## Projects:

Making Good the Museum:  
Enhancing Access

Cases for the most visited gallery  
in the Pitt Rivers Museum

Making Good the Museum II:  
new display cases, orientation  
panels and seating

*Beware. You are entering the  
climate of foreign logic.*  
communication, orientation and  
way-finding solutions

Showcasing the Pitt Rivers:  
the Museum's new entrance

Lighting the Way: enhancing the  
collections' visibility

## DCMS/Wolfson Fund grants:

£100,000

(Making Good the Museum, 2002-3)

£36,800

(Cases for the most visited gallery, 2004-5)

£70,125

(Making Good the Museum II, 2005-6)

£30,000

(Communication, orientation and way finding,  
2006-7)

£128,000

(New entrance, 2007-8)

£50,000

(Lighting the Way, 2009-10)

## Other funders:

Heritage Lottery Fund

Private trusts and foundations

Private sponsorship and donations

The Museum and its Friends

The Pitt Rivers Museum has been successful in securing several grants from the DCMS/Wolfson Fund. This has enabled the Museum to carry out a comprehensive improvement of its galleries, focusing in particular on improved display cases, lighting and signage.

In the period covered by this report, the Museum has undertaken two major building projects – the construction of a 1,900m<sup>2</sup> new extension, and the redevelopment of the Museum's entrance. A number of the Museum's applications to the Fund were tied into each of the projects in a different way, and the Museum acknowledges that the support provided by the Fund was crucial in allowing the two projects to be completed. In one instance, a bid to the Fund allowed the Museum to signpost the totality of the galleries and the new extension; in another, to outfit the new entrance platform with cases of the right size and quality. The Museum has stressed how helpful the continued availability of the Fund has been.

**“...an outstanding and  
invaluable Fund...”**

**Michael O'Hanlon,  
Director, Pitt Rivers Museum**





New cases flank the Pitt Rivers Museum's redeveloped entrance. © Pitt Rivers Museum

# The Royal Armouries, Leeds

**Project:**  
*Hands on History*

**DCMS/Wolfson Fund grant:**  
£142,890

**Year of grant:**  
2005-6

**Other funders:**  
HISTORY™



The *Hands on History* project, for which the Royal Armouries received a DCMS/Wolfson Fund award in 2005-6, was specifically aimed at finding a way to enable the Museum's visitors to access and engage with its collections in a way that would enable them to appreciate what it must have been like to participate in some of the most important events in our history. The project was designed to allow visitors to get close to the collection, without putting them in harm's way.

The *Hands on History* areas within the War Gallery in Leeds opened in summer 2006 as part of a year of celebrations to mark the 10th birthday of the Museum. Since then they have been a permanent and popular feature of the Royal Armouries, giving visitors the chance to draw a bow and test their strength and skill compared to a master bowman as well as the opportunity to experience what a medieval jousting would have seen through his visor in the heat of the tournament. This has helped to promote access to the Museum's collections, regardless of physical and intellectual barriers presented by disability, lack of English language or poor literacy skills.

The DCMS/Wolfson Fund award significantly helped the Museum to approach a new corporate partner for this project – HISTORY™ (previously the History Channel). Cash sponsorship was enhanced by an in-kind commitment to produce and edit AVs for *Hands on History* and this model has continued in future projects at all the Museum's sites, with HISTORY™ becoming both a long-term corporate sponsor and a creative partner in the development of AVs for all major exhibitions and gallery projects.

The success of the redevelopment at Leeds led to the creation of the *Hands on History* Gallery within the White Tower at the Tower of London.

In new Royal Armouries' capital projects – most notably the £3.5 million redevelopment of Royal Armouries, Fort Nelson (also supported in part by the DCMS/Wolfson Fund) – key principles behind *Hands on History* have been developed still further with new gallery interpretation. This focuses on the human stories that bring the collection to life for the visitor and uses visual, tactile and audio interpretation techniques, with objects placed outside glass cases wherever possible so that they can be touched.

*Hands on History* at the Royal Armouries, Leeds © Board of Trustees of the Armouries





## The National Tramway Museum

The National Tramway Museum was awarded £150,000 in 2008-9 for a major redisplay and renovation of its Great Exhibition Hall. © National Tramway Museum

**“The Gallery now is more user-friendly and far more attractive than it was before the refurbishment.”**

**Visitor, Graves Art Gallery**



## **Graves Art Gallery, Museums Sheffield**

Graves Art Gallery, Museums Sheffield, received £65,000 in 2006-7 and £126,000 in 2007-8 for phases I and II of its *Rise and Shine* project. This focused on improving the display spaces and access to the collections at the Graves Gallery. © Dan Sumption



## **Blists Hill Victorian Town**

Blists Hill Victorian Town, Ironbridge, received £126,000 in 2008-9 for the creation of a new Victorian Post Office.

© Ironbridge Gorge Museum Trust

# Norfolk Museums Service

## Projects:

Access to the Archaeology and Social History Collections, Norfolk Rural Life Museum

Mayors and Magnates:  
Bringing the 17th century alive at Strangers' Hall

Seahenge Gallery, the Lynn Museum

Collectors and Curators:  
reinterpreting the Natural History Collections at Norwich Castle

Law Makers and Law Breakers at Norwich Castle

Changing Lives in Norfolk, at Gressenhall Farm and Workhouse

## DCMS/Wolfson Fund grants:

£100,000  
(Archaeology and Social History, 2004-5)

£30,894  
(Mayors and Magnates, 2005-6)

£65,000  
(Seahenge Gallery, 2006-7)

£60,000  
(Collectors and Curators, 2007-8)

£70,000  
(Law Makers and Law Breakers, 2008-9)

£50,000  
(Changing Lives in Norfolk, 2009-10)

The DCMS /Wolfson Fund has had a significant positive impact on the visitor experience at a number of museums in Norfolk, enabling major new displays both as part of larger projects, and in smaller stand-alone single gallery redisplay. While the 2006 project at Strangers' Hall is one of the smaller schemes supported by the Fund, it is an excellent example of the Fund's ability to generate and encourage further investment and, in this case, to enable the renaissance of an entire museum.

In the 2005-6 bidding round, Strangers' Hall received £30,894 for its Mayors and Magnates project, a tightly-focused display and interpretation project which included superb new room settings; replica costumes, pots, glasses and other table items which enable children on school visits to create a Tudor banquet in the Great Hall; and new signage and displays on the exterior of the Museum and in the front windows. These elements were prioritised to achieve the greatest possible impact on the visitor experience.

This relatively modest project was the catalyst for significant additional investment in the Museum, both at the time of the project and since its completion. The DCMS/Wolfson award successfully encouraged further grants while the properties teams at Norfolk County Council and Norwich City Council, jointly responsible for the Strangers' Hall building, put Strangers' at the top of their priority lists. Opening hours have recently been extended at the site, and visitor numbers have steadily increased.



A glimpse of Lady Paine in the Great Chamber at Strangers' Hall. © Norfolk Museums Service



**Other funders:**

Heritage Lottery Fund  
Norfolk County Council  
Norwich City Council  
Friends of Norwich Museums  
Friends of Gressenhall Farm and Workhouse  
Norwich Heritage Economic and Regeneration Trust

Breckland District Council  
European Regional Development Fund  
Preservation of Industrial and  
Scientific Material Fund (PRISM)  
Town Close Estates Charity  
Calouste Gulbenkian Foundation

# Appendix A

## Breakdown of Awards

Table 1: Distribution of awards by region and type of institution

Region	DCMS Sponsored	Designated University Collections	Designated Collections	Non-Designated Collections in Regional Hubs	Total
East England	1	6	6	6	19
East Midlands	0	0	1	7	8
London	48	4	7	0	59
North East	8	1	9	1	19
North West	13	6	4	9	32
South East	2	21	12	4	39
South West	2	0	19	1	22
West Midlands	0	3	15	5	23
Yorkshire and Humberside	6	0	16	2	24
<b>Total</b>	<b>80</b>	<b>41</b>	<b>89</b>	<b>35</b>	<b>245</b>

Table 2: Percentage of awards by region and type of institution

Region	DCMS Sponsored	Designated University Collections	Designated Collections	Non-Designated Collections in Regional Hubs
East England	1	15	7	17
East Midlands	0	0	1	20
London	60	10	8	0
North East	10	2	10	3
North West	16	15	5	26
South East	2.5	51	13	11
South West	2.5	0	21	3
West Midlands	0	7	17	14
Yorkshire and Humberside	8	0	18	6
<b>Total</b>	<b>100</b>	<b>100</b>	<b>100</b>	<b>100</b>



Table 3: Total amount of grants received by region and type of institution

Region	DCMS Sponsored	Designated University Collections	Designated Collections	Non-Designated Collections in Regional Hubs	Total
East England	87,000	908,000	358,420	445,894	1,799,314
East Midlands	0	0	150,000	534,200	684,200
London	7,742,879	139,000	758,000	0	8,639,879
North East	1,118,100	50,000	1,385,000	80,000	2,633,100
North West	1,905,500	637,000	237,000	306,581	3,086,081
South East	237,000	1,885,425	676,526	480,450	3,279,401
South West	285,000	0	1,655,350	50,000	1,990,350
West Midlands	0	90,000	2,104,000	538,100	2,732,100
Yorkshire and Humberside	892,890	0	2,018,685	165,000	3,076,575
<b>Total</b>	<b>12,268,369</b>	<b>3,709,425</b>	<b>9,342,981</b>	<b>2,600,225</b>	<b>27,921,000</b>

Table 4: Percentage of money awarded by region and type of institution

Region	DCMS Sponsored	Designated University Collections	Designated Collections	Non-Designated Collections in Regional Hubs
East England	1	24	4	17
East Midlands	0	0	2	21
London	63	4	8	0
North East	9	1	15	3
North West	16	17	3	12
South East	2	51	7	18
South West	2	0	18	2
West Midlands	0	3	22	21
Yorkshire and Humberside	7	0	21	6
<b>Total</b>	<b>100</b>	<b>100</b>	<b>100</b>	<b>100</b>

# Appendix A

## Breakdown of Awards

Table 5: Breakdown of bids and awards by year

Year	Eligible institutions	Bids	Number of Awards	Total Awards
2002/03	34	24	10	£2,000,000
2003/04	34	22	12	£1,936,000
2004/05	96	55	32	£4,000,000
2005/06	97	48	40	£4,000,000
2006/07	95	58	43	£3,999,000
2007/08	95	55	43	£4,000,000
2008/09	95	52	31	£4,000,000
2009/10	100	54	34	£3,986,000
<b>Total</b>			<b>245</b>	<b>£27,921,000</b>

# Appendix B

## Alphabetical list of institutions which have received awards

Organisation Name Project	Award	Year	Region
Ashmolean Museum of Art & Archaeology (University of Oxford) Special Exhibitions Gallery	150,000	2002-03	SE
Ashmolean Museum of Art & Archaeology (University of Oxford) Tapestry and Fine Art Galleries	43,300	2004-05	SE
Ashmolean Museum of Art & Archaeology (University of Oxford) Collections Management System	65,200	2005-06	SE
Ashmolean Museum of Art & Archaeology (University of Oxford) Making an Entrance	100,000	2006-07	SE
Ashmolean Museum of Art & Archaeology (University of Oxford) The Cast Gallery	165,000	2007-08	SE
Ashmolean Museum of Art & Archaeology (University of Oxford) Western Art Galleries	230,000	2008-09	SE
Ashmolean Museum of Art & Archaeology (University of Oxford) New Textiles Gallery	122,000	2009-10	SE
Aston Hall and Park (Birmingham Museums & Art Gallery) Aston Hall and Park Development Project	200,000	2006-07	WM
Barber Institute of Fine Arts (University of Birmingham) Temporary Exhibition Space	20,000	2004-05	WM
Barber Institute of Fine Arts (University of Birmingham) Improvement to lighting in the Primary and Education Galleries	50,000	2005-06	WM
Barber Institute of Fine Arts (University of Birmingham) Creation of Prints and Drawings Study Room	20,000	2006-07	WM
Beamish, the North of England Open Air Museum Installation of period paths and refurbishment of period features	127,000	2004-05	NE
Beamish, the North of England Open Air Museum Audio-visual access to historic buildings	73,000	2005-06	NE
Beamish, the North of England Open Air Museum Colliery Yard improvements	40,000	2006-07	NE
Beamish, the North of England Open Air Museum Colliery Period Lamp Cabin	145,000	2007-08	NE
Beamish, the North of England Open Air Museum Beamish Begins Here	150,000	2009-10	NE
Birmingham Museum & Art Gallery (Birmingham Museums & Art Gallery) Making Sense – the In Touch Gallery	217,000	2004-05	WM
Birmingham Museum & Art Gallery (Birmingham Museums & Art Gallery) Gallery of Birmingham History 1700-1830	300,000	2008-09	WM

### Key to regions:

E = East; EM = East Midlands; L = London; NE = North East; NW = North West; SE = South East; SW = South West; WM = West Midlands; YH = Yorkshire and Humberside

Organisation Name Project	Award	Year	Region
Bolton Museum, Art Gallery & Aquarium Development and redisplay of World Gallery	10,000	2004-05	NW
Bolton Museum, Art Gallery & Aquarium Art Galleries refurbishment	114,281	2005-06	NW
Bolton Museum, Art Gallery & Aquarium New Histories: Local History Gallery refurbishment	20,000	2006-07	NW
Bowes Museum The Silver Swan Experience	100,000	2005-06	NE
Bowes Museum Textile and Fashion Galleries	300,000	2006-07	NE
Bowes Museum British Decorative Arts Gallery	150,000	2008-09	NE
Bowes Museum Staging the Spectacular: redefining the Picture Galleries at the Bowes Museum	300,000	2009-10	NE
Brighton Museum & Art Gallery (Royal Pavilion, Museums & Libraries, Brighton & Hove) Community Gallery	40,000	2006-07	SE
Bristol City Museum & Art Gallery (Bristol Museums, Galleries & Archives) Creative Spaces	85,000	2007-08	SW
British Museum Improvements to Gallery 5, including environmental controls	400,000	2003-04	LON
British Museum Improvement of access provision	150,000	2004-05	LON
British Museum Physical improvements to Galleries 90-94	150,000	2005-06	LON
British Museum Galleries 49-53: Prehistory and Europe and the Ancient Near East	100,000	2006-07	LON
British Museum Orientation and way-finding	100,000	2007-08	LON
Cartwright Hall Art Gallery (Bradford Museums) Connect: people, place and imagination	140,000	2006-07	YH
Chatham Historic Dockyard Trust Access to No.3 covered slip and reserve large objects collection	155,450	2005-06	SE
Chatham Historic Dockyard Trust Dockyard Railway	175,000	2008-09	SE
Cheltenham Art Gallery & Museum Redisplay of galleries in 1989 extension	50,000	2006-07	SW
Cliffe Castle Museum (Bradford Museums) Keighley Stories	25,000	2007-08	YH
Colchester Castle (Colchester & Ipswich Museum Service) New Saxon/Norman Gallery and Temporary Exhibition Space	79,200	2004-05	E
Colchester Castle (Colchester & Ipswich Museum Service) Improvements to collection care and interpretation	44,220	2005-06	E
Colchester Natural History Museum (Colchester & Ipswich Museum Service) New Geology and Climate Gallery	55,000	2007-08	E

**Key to regions:**

E = East; EM = East Midlands; L = London; NE = North East; NW = North West; SE = South East; SW = South West; WM = West Midlands; YH = Yorkshire and Humberside

Organisation Name Project	Award	Year	Region
Courtauld Institute Gallery (University of London) Prints and Drawings Study Room	63,000	2004-05	LON
Courtauld Institute Gallery (University of London) Collections Viewing Room and Store	33,000	2006-07	LON
Courtauld Institute Gallery (University of London) Gallery Entrance Project	40,000	2007-08	LON
Coventry Transport Museum Landmarques/Blitz Gallery	150,000	2005-06	WM
Coventry Transport Museum Commercial Vehicle Galleries	150,000	2006-07	WM
Coventry Transport Museum 1980s to Now Gallery	150,000	2008-09	WM
Derby Museum & Art Gallery Lighting exhibitions	18,000	2009-10	EM
Design Museum Introducing physical access throughout the Museum	52,800	2005-06	LON
Discovery Museum & Laing Art Gallery (Tyne & Wear Museums) Improving access	100,000	2003-04	NE
Donington le Heath Manor House (Leicestershire County Council) Improving access	86,200	2004-05	EM
Dulwich Picture Gallery Improving the visitor experience	44,000	2009-10	LON
Falmouth Art Gallery (Royal Cornwall Museum) Phase 1 – redisplay and disabled access	50,000	2006-07	SW
Fareham Community Museum (Hampshire County Council Museums & Archives Service) Renovation of Fareham Community Museum	100,000	2005-06	SE
Fitzwilliam Museum (University of Cambridge) Refurbishment of Egyptian Galleries	250,000	2003-04	E
Fitzwilliam Museum (University of Cambridge) Greek and Roman Project	300,000	2007-08	E
Geffrye Museum Almshouse display	60,000	2002-03	LON
Geffrye Museum New 17th- and 18th-Century Rooms	258,000	2004-05	LON
Gladstone Pottery Museum (Stoke-on-Trent Museum Service) Learning for Life	39,000	2007-08	WM
Graves Art Gallery (Museums Sheffield) Rise and Shine I	65,000	2006-07	YH
Graves Art Gallery (Museums Sheffield) Rise and Shine II	126,000	2007-08	YH
Great North Museum: Hancock (Tyne & Wear Museums) The Fossil Zone	65,000	2002-03	NE
Great North Museum: Hancock (Tyne & Wear Museums) Diversity of Life	200,000	2007-08	NE

**Key to regions:**

E = East; EM = East Midlands; L = London; NE = North East; NW = North West; SE = South East; SW = South West; WM = West Midlands; YH = Yorkshire and Humberside

Organisation Name Project	Award	Year	Region
Gressenhall Farm and Workhouse (Norfolk Museums Service) Changing Lives in Norfolk	50,000	2009-10	E
Harborough Museum (Leicestershire County Council) Display and interpretation of the South East Leicestershire Hoard	35,000	2006-07	EM
Harewood House Rehanging of Chinese wallpaper in East Bedroom	83,300	2007-08	YH
Harris Museum & Art Gallery The Mrs French Scent Bottle Collection: improving access, storage and interpretation	30,000	2005-06	NW
Harris Museum & Art Gallery Three Hundred Years of Art and Design	20,000	2006-07	NW
Harris Museum & Art Gallery Mezzanine Gallery displays	19,000	2008-09	NW
Herbert Art Gallery & Museum Histories Galleries Project	192,100	2004-05	WM
Herbert Art Gallery & Museum Peace and Reconciliation Gallery	150,000	2005-06	WM
Horniman Museum Refurbishment of North Hall Gallery	100,000	2003-04	LON
Horniman Museum Improving access and display	48,395	2005-06	LON
Horniman Museum Natural History Gallery Infrastructure Project	100,000	2009-10	LON
Imperial War Museum (Lambeth Road) Improved access	75,000	2003-04	LON
Imperial War Museum (Lambeth Road) Improvements to gallery lighting	186,000	2004-05	LON
Imperial War Museum (Lambeth Road) Temporary Exhibition Galleries	80,000	2007-08	LON
Imperial War Museum (Lambeth Road) Your History: Discovery Gallery	190,000	2008-09	LON
Imperial War Museum (HMS Belfast) Operation Admiral: renovation of the Bridge Command and Control Centre	150,000	2009-10	LON
Ipswich Museum (Colchester & Ipswich Museum Service) From the Mummy's Tomb	50,000	2008-09	E
Ironbridge Gorge Museum Trust Post Office at Blists Hill Victorian Town	126,000	2008-09	WM
Jewish Museum The Jewish Museum Development Project	95,000	2007-08	LON
Lady Lever Art Gallery (National Museums Liverpool) New entrance, reception and learning suite	225,000	2005-06	NW
Lady Lever Art Gallery (National Museums Liverpool) Learning base	50,000	2008-09	NW
Laing Art Gallery (Tyne & Wear Museums) Creative City Gallery	225,000	2008-09	NE

**Key to regions:**

E = East; EM = East Midlands; L = London; NE = North East; NW = North West; SE = South East; SW = South West; WM = West Midlands; YH = Yorkshire and Humberside

Organisation Name Project	Award	Year	Region
Leeds City Art Gallery (Leeds Museum & Galleries) Conversion of the former Art Library into a new display space	100,000	2006-07	YH
Leicester City Museums Service Audio guides	20,000	2005-06	EM
London Transport Museum First Metropolis Gallery	200,000	2004-05	LON
London Transport Museum Refurbishment and improvement in access to the education suite	150,000	2005-06	LON
London Transport Museum Improvements to access and facilities for disabled visitors	100,000	2006-07	LON
London Transport Museum Creation of a new Design Gallery	125,000	2007-08	LON
London Transport Museum Improving access to Acton Depot and Library at Covent Garden	44,000	2008-09	LON
Lynn Museum (Norfolk Museums Service) Seahenge Gallery	65,000	2006-07	E
M Shed (Bristol Museums, Galleries & Archives) In the Loop	150,000	2008-09	SW
Manchester Art Gallery (Manchester City Galleries) Improvements to public areas	115,000	2004-05	NW
Manchester Art Gallery (Manchester City Galleries) Balcony Project: collection redisplay and interpretation	37,000	2009-10	NW
Manchester Museum (University of Manchester) Enabling access	150,000	2005-06	NW
Manchester Museum (University of Manchester) Manchester Identity Gallery	120,000	2007-08	NW
Manchester Museum (University of Manchester) Natural Selection	97,000	2008-09	NW
Maritime Park (National Museums Liverpool) Maritime Park	220,000	2007-08	NW
Mary Rose Trust Access improvements	70,000	2004-05	SE
Merseyside Maritime Museum (National Museums Liverpool) Special Exhibitions Suite	200,000	2002-03	NW
Millennium Gallery (Museums Sheffield) Seeing Beauty: the Ruskin Collection revisited	100,000	2009-10	YH
Monkwearmouth Station Museum (Tyne & Wear Museums) Gallery refurbishment	203,100	2004-05	NE
Museum of Archaeology & Anthropology (University of Cambridge) Museum entrance and gallery renovations	250,000	2009-10	E
Museum of Costume (Bath & NE Somerset Heritage Services) Structural and capital refit work	100,000	2005-06	SW
Museum of English Rural Life (University of Reading) Making of the Countryside Exhibition	136,000	2004-05	SE

**Key to regions:**

E = East; EM = East Midlands; L = London; NE = North East; NW = North West; SE = South East; SW = South West; WM = West Midlands; YH = Yorkshire and Humberside

Organisation Name Project	Award	Year	Region
Museum of Hartlepool (Hartlepool Museums) Redisplay of Museum of Hartlepool	80,000	2007-08	NE
Museum of the History of Science (University of Oxford) Audio guides	8,000	2003-04	SE
Museum of the History of Science (University of Oxford) Microgallery	6,000	2006-07	SE
Museum of the Jewellery Quarter (Birmingham Museums & Art Gallery) Gallery and visitor improvements	70,000	2007-08	WM
Museum of London Medieval London Gallery	200,000	2003-04	LON
Museum of London Capital City Project 1660-1850	85,000	2006-07	LON
Museum of London One London, Many Londoners	70,000	2007-08	LON
Museum of Science & Industry (MOSI), Manchester Redisplaying the Power Hall	148,000	2004-05	NW
Museum of Science & Industry (MOSI), Manchester Redisplaying the Textile Gallery	115,500	2005-06	NW
Museum of Science & Industry (MOSI), Manchester Redisplaying the Introduction to the Museum Exhibition	40,000	2006-07	NW
Museum of Zoology (University of Cambridge) Curating Darwin's legacy	20,000	2006-07	E
National Coal Mining Museum for England Underground Galleries: widening access and engaging audiences	30,000	2009-10	YH
National Football Museum Sounds, vision and light: improving access and display	40,000	2005-06	NW
National Gallery Staircase Hall Restoration	296,300	2004-05	LON
National Gallery Renovation of the 19th-century Galleries	120,000	2006-07	LON
National Gallery Improvements to environmental controls in the 16th-century Flemish and Netherlandish Galleries	100,000	2007-08	LON
National Gallery Phase 2 of the Lower Galleries	200,000	2009-10	LON
National Maritime Museum Nelson Gallery	250,000	2003-04	LON
National Maritime Museum Provision of environmental controls	25,384	2005-06	LON
National Maritime Museum The Atlantic Worlds Gallery	135,000	2006-07	LON
National Maritime Museum Special Exhibitions Gallery	75,000	2007-08	LON
National Maritime Museum Asian Seas Gallery	134,000	2008-09	LON

**Key to regions:**

E = East; EM = East Midlands; L = London; NE = North East; NW = North West; SE = South East; SW = South West; WM = West Midlands; YH = Yorkshire and Humberside



Organisation Name Project	Award	Year	Region
National Media Museum (NMSI) Photography Gallery	260,000	2002-03	YH
National Media Museum (NMSI) Gallery redevelopment	200,000	2005-06	YH
National Media Museum (NMSI) Interactive Foyer	150,000	2008-09	YH
National Motor Museum Revitalising Britain's first major exhibition of motoring history	60,000	2007-08	SE
National Museum of Science and Industry (NMSI South Kensington) James Watt's Workshop	190,000	2009-10	LON
National Portrait Gallery The Landing Project: transforming display and access	122,000	2007-08	LON
National Railway Museum (NMSI) Hands on History: access to the hidden collections	110,000	2006-07	YH
National Tramway Museum Moving the Masses: Great Exhibition Hall	150,000	2008-09	EM
National Waterways Museum, Ellesmere Port Boats on Show	40,000	2006-07	NW
National Waterways Museum, Gloucester New Temporary Exhibition Gallery	20,000	2008-09	SW
Natural History Museum (London) Renovation and improvement of the permanent Mineral Gallery	150,000	2006-07	LON
Natural History Museum (London) Art and Illustration Gallery	300,000	2009-10	LON
Natural History Museum (Tring) Redevelopment of amphibian, reptile, marsupial and domestic dogs displays	87,000	2007-08	E
New Walk Museum & Art Gallery (Leicester City Museum Service) Prehistorica	145,000	2007-08	EM
Norfolk Rural Life Museum (Norfolk Museums Service) Access to archaeology and social history collections	100,000	2004-05	E
Norwich Castle Museum and Art Gallery (Norfolk Museums Service) Collectors and Curators: reinterpreting the natural history collections	60,000	2007-08	E
Norwich Castle Museum and Art Gallery (Norfolk Museums Service) Law Makers and Law Breakers	70,000	2008-09	E
Oriental Museum (University of Durham) Golden Jubilee Refurbishment	50,000	2009-10	NE
Oxford University Museum of Natural History Refurbishment and redisplay of the Great Court and Arcades	165,000	2002-03	SE
Oxford University Museum of Natural History Gallery refurbishment and installation of new thematic insect and plant displays	50,000	2005-06	SE
Oxford University Museum of Natural History New bird, mammal and gemstone display	75,000	2006-07	SE
Oxford University Museum of Natural History Geology of the Oxford region	55,000	2007-08	SE

**Key to regions:**

E = East; EM = East Midlands; L = London; NE = North East; NW = North West; SE = South East; SW = South West; WM = West Midlands; YH = Yorkshire and Humberside

Organisation Name Project	Award	Year	Region
Oxford University Museum of Natural History New displays on evolution, natural history and British birds	100,000	2009-10	SE
People's History Museum New Temporary Exhibition and Community Galleries	60,000	2007-08	NW
People's History Museum Enhanced display system	120,000	2009-10	NW
Percival David Foundation of Chinese Art (University of London) Improvements to visitor reception	3,000	2003-04	LON
Pitt Rivers Museum (University of Oxford) Making Good the Museum: enhancing access	100,000	2002-03	SE
Pitt Rivers Museum (University of Oxford) Gallery cases	36,800	2004-05	SE
Pitt Rivers Museum (University of Oxford) Making Good the Museum II: new display cases, orientation panels and seating	70,125	2005-06	SE
Pitt Rivers Museum (University of Oxford) Beware, you are entering the climate of foreign logic: communications, orientation and way-finding solutions	30,000	2006-07	SE
Pitt Rivers Museum (University of Oxford) Showcasing the Pitt Rivers: new Museum entrance	128,000	2007-08	SE
Pitt Rivers Museum (University of Oxford) Lighting the Way: enhancing the collections' visibility	50,000	2009-10	SE
Plymouth City Museum & Art Gallery Environmental and display improvements	120,000	2006-07	SW
Potteries Museum & Art Gallery (Stoke-on-Trent Museum Service) Gateways to China Project – broadening access	112,000	2005-06	WM
Potteries Museum & Art Gallery (Stoke-on-Trent Museum Service) Access and ambience: improvements to access, environmental control and public spaces	100,000	2006-07	WM
Roman Baths Museum (Bath & NE Somerset Heritage Services) Temple Precinct Project	100,000	2004-05	SW
Roman Baths Museum (Bath & NE Somerset Heritage Services) Inner Terrace display	90,000	2008-09	SW
Roman Baths Museum (Bath & NE Somerset Heritage Services) Interpretation and access	80,000	2009-10	SW
Royal Albert Memorial Museum (Exeter City Museums & Art Gallery) Development Project 1	100,000	2006-07	SW
Royal Albert Memorial Museum (Exeter City Museums & Art Gallery) Development Project 2	50,000	2007-08	SW
Royal Albert Memorial Museum (Exeter City Museums & Art Gallery) Development Project 3	200,000	2009-10	SW
Royal Armouries, Fort Nelson Orienteur at Fort Nelson	150,000	2008-09	SE
Royal Armouries, Fort Nelson Social History Galleries	87,000	2009-10	SE

**Key to regions:**

E = East; EM = East Midlands; L = London; NE = North East; NW = North West; SE = South East; SW = South West; WM = West Midlands; YH = Yorkshire and Humberside

Organisation Name Project	Award	Year	Region
Royal Armouries, Leeds Hands on History Project	142,890	2005-06	YH
Royal Engineers Museum, Chatham Access and orientation	20,000	2005-06	SE
Royal Engineers Museum, Chatham Model Bridging Gallery Project	33,400	2007-08	SE
Royal Engineers Museum, Chatham Museum, library and archive transformation Project	75,000	2008-09	SE
Royal Engineers Museum, Chatham Early Engineering Gallery Project	20,000	2009-10	SE
Salisbury & South Wiltshire Museum Improving access to the Costume Galleries	14,100	2004-05	SW
Sedgwick Museum of Earth Sciences (University of Cambridge) Sedgwick Museum gallery redevelopment (Darwin Project)	28,000	2007-08	E
Segedunum Roman Forts and Baths (Tyne & Wear Museums) Redevelopment of third floor galleries	100,000	2009-10	NE
Shiplay Art Gallery (Tyne & Wear Museums) Designs for Life	145,000	2005-06	NE
Sir John Soane's Museum Lighting improvements	350,000	2002-03	LON
Sir John Soane's Museum Study Centre	50,000	2005-06	LON
Sir John Soane's Museum Re-opening the Tivoli Recess	100,000	2006-07	LON
Sir John Soane's Museum Soane's Ante-Room restoration	100,000	2009-10	LON
South Shields Museum & Art Gallery (Tyne & Wear Museums) Changing faces: a new visitor experience	80,000	2006-07	NE
Southampton City Art Gallery (Southampton Council) Improvements to environmental controls	81,800	2004-05	SE
Stockwood Museum (Luton Museum Service) Redisplay of Stockwood Museum Stable Block	100,000	2005-06	E
Stockwood Museum (Luton Museum Service) Mossman Gallery redisplay	100,000	2006-07	E
Strangers' Hall (Norfolk Museums Service) Mayors and Magnates: bringing the 17th century alive	30,894	2005-06	E
Sudley House (National Museums Liverpool) Sudley House	187,000	2004-05	NW
Tank Museum, Bovington At Close Quarters: the Discovery Centre	100,000	2007-08	SW
Tank Museum, Bovington At Close Quarters: the Tank Story	200,000	2008-09	SW
Tate Britain Sculpture Gallery update	350,000	2002-03	LON

**Key to regions:**

E = East; EM = East Midlands; L = London; NE = North East; NW = North West; SE = South East; SW = South West; WM = West Midlands; YH = Yorkshire and Humberside

Organisation Name Project	Award	Year	Region
Tate St Ives Sun screening and lighting controls	185,000	2004-05	SW
Tate St Ives Welcome to Tate St Ives	100,000	2008-09	SW
Temple Newsam (Leeds Museums & Galleries) Building on success: Sir John Ramsden's Dressing Room	72,000	2007-08	YH
Thwaite Mills (Leeds Museums & Galleries) Warehouse and Drying Shed Renovation and Development Project	80,000	2009-10	YH
Tullie House Museum & Art Gallery Carlisle Lives Gallery	50,000	2006-07	NW
Tullie House Museum & Art Gallery Amati violin display and interpretation project	8,300	2007-08	NW
Tullie House Museum & Art Gallery Presenting the Pre-Raphaelites	35,000	2009-10	NW
Victoria and Albert Museum (Museum of Childhood) Creativity Gallery	155,000	2005-06	LON
Victoria and Albert Museum Paintings Galleries	300,000	2002-03	LON
Victoria and Albert Museum Sculpture Gallery	270,000	2003-04	LON
Victoria and Albert Museum Robert H N Ho Family Foundation Gallery of Asian Buddhist Sculpture	300,000	2007-08	LON
Victoria and Albert Museum Factory Ceramics	250,000	2008-09	LON
Victoria and Albert Museum Sculpture in Europe 1300-1600	240,000	2009-10	LON
Walker Art Gallery (National Museums Liverpool) Disabled access and dedicated Children's Gallery	200,000	2003-04	NW
Wallace Collection Environmental controls	80,000	2003-04	LON
Wallace Collection Grand Redesigns: restoring the first floor State Rooms – Phase 1	150,000	2006-07	LON
Wallace Collection Grand Redesigns: restoring the first floor State Rooms – Phase 2	75,000	2007-08	LON
Wallace Collection A Fitting Arrival	200,000	2008-09	LON
Wallace Collection Venetian Vision	120,000	2009-10	LON
Weald & Downland Open Air Museum, Chichester Renewal of interpretative signs	9,326	2005-06	SE
Weald & Downland Open Air Museum, Chichester Vehicle and Implement Gallery	27,000	2007-08	SE
Weald & Downland Open Air Museum, Chichester New gallery for display on traditional building crafts and materials	65,000	2008-09	SE

**Key to regions:**

E = East; EM = East Midlands; L = London; NE = North East; NW = North West; SE = South East; SW = South West; WM = West Midlands; YH = Yorkshire and Humberside

Organisation Name Project	Award	Year	Region
Weald & Downland Open Air Museum, Chichester Access Project	175,000	2009-10	SE
Wedgwood Museum The new Wedgwood Museum	100,000	2004-05	WM
Wedgwood Museum Improvements to environmental controls	250,000	2005-06	WM
Wedgwood Museum New Wedgwood Museum: improvements to access, interpretation and facilities	40,000	2006-07	WM
Wedgwood Museum Enhancement and implementation of the Wedgwood Museum interpretation plan	100,000	2007-08	WM
Weston Park Museum (Museums Sheffield) Access to Weston Park Museum	150,000	2004-05	YH
Weston Park Museum (Museums Sheffield) What on Earth Gallery	147,985	2005-06	YH
Whipple Museum of the History of Science (University of Cambridge) Whipple Gallery Improvement Project	60,000	2009-10	E
Whitworth Art Gallery (University of Manchester) Textile Gallery redisplay and improvement of visitor welcome	30,000	2005-06	NW
Whitworth Art Gallery (University of Manchester) Lasting Impressions	90,000	2006-07	NW
Whitworth Art Gallery (University of Manchester) South Gallery refurbishment	150,000	2008-09	NW
Wilberforce House (Kingston-upon-Hull Museums) Access and Development Project	202,400	2004-05	YH
Wilberforce House (Kingston-upon-Hull Museums) Public access to Hull's hidden treasures	130,000	2006-07	YH
Willis Museum (Hampshire County Council Museums & Archives Service) Fit for the 21st Century	50,000	2007-08	SE
Wiltshire Heritage Museum Museum access improvements	10,700	2004-05	SW
Wiltshire Heritage Museum Upgrade of Art Gallery and Lecture Hall	24,550	2005-06	SW
Wiltshire Heritage Museum Visitor access improvements	11,000	2007-08	SW
Wiltshire Heritage Museum Bronze Age Wiltshire at the time of Stonehenge	150,000	2009-10	SW
Wollaton Hall (Nottingham City Museums & Galleries) Refurbishment and display	220,000	2005-06	EM
Wollaton Hall (Nottingham City Museums & Galleries) Costume Collection Centre	10,000	2008-09	EM
Wolverhampton Art Gallery Collections Resource Centre	133,000	2005-06	WM
Wolverhampton Art Gallery Access to works on paper in the Collections Resource Centre	30,000	2008-09	WM

**Key to regions:**

E = East; EM = East Midlands; L = London; NE = North East; NW = North West; SE = South East; SW = South West; WM = West Midlands; YH = Yorkshire and Humberside

Organisation Name Project	Award	Year	Region
Wolverhampton Art Gallery Made in the Black Country	33,000	2009-10	WM
Wordsworth Trust Upgrade of Museum and Library	45,000	2004-05	NW
World Museum Liverpool (National Museums Liverpool) Refurbishment of the Egyptian Gallery	300,000	2006-07	NW
York Art Gallery (York Museums Trust) The Burton Gallery	145,000	2009-10	YH
York Castle Museum (York Museums Trust) Kirkgate improvements	187,000	2004-05	YH
York Castle Museum (York Museums Trust) The 60s experience	200,000	2006-07	YH
York Castle Museum (York Museums Trust) Accessing York's Museums	30,000	2007-08	YH
Yorkshire Museum (York Museums Trust) Marvel of Medieval York Gallery	200,000	2008-09	YH

**Key to regions:**

E = East; EM = East Midlands; L = London; NE = North East; NW = North West; SE = South East; SW = South West; WM = West Midlands; YH = Yorkshire and Humberside

We can also provide documents  
to meet the specific requirements  
of people with disabilities.  
Please call 020 7211 6200 or  
email: [enquiries@culture.gsi.gov.uk](mailto:enquiries@culture.gsi.gov.uk)

Department for Culture, Media and Sport  
Printed in the UK on recycled paper

© Crown Copyright  
September 2011



department for  
culture, media  
and sport

2-4 Cockspur Street  
London SW1Y 5DH  
[www.culture.gov.uk](http://www.culture.gov.uk)



THE  
WOLFSON  
FOUNDATION

8 Queen Anne Street  
London W1G 9LD  
[www.wolfson.org.uk](http://www.wolfson.org.uk)