



Department  
for Education

# **Children Accommodated in Secure Children's Homes 31 March 2013**

**Methodology Document**

# Contents

1. Background	3
2. Methodology	3
2.1. Data cleaning	3
2.2. Data Processing	4
2.3. Production of Statistical First Release	4
3. Process Map	5
Annex A: Secure Accommodation Data Collection Form	6

## 1. Background

In England and Wales there are three types of secure accommodation in which children and young people can be placed. These are secure training centres, young offender institutions and secure children's homes. This document refers to the statistical first release (SFR) which reports on children accommodated in secure children's homes.

Secure children's homes are children's homes which provide a locked environment and restrict a young person's liberty. They provide care and accommodation to children and young people who have been detained or sentenced by the Youth Justice Board (YJB) and those who have been remanded to secure local authority (LA) accommodation. They also accommodate and care for children and young people who have been placed there on welfare grounds by LAs and the courts. Secure children's homes provide the young people with support tailored to their individual needs; to achieve this they have a high ratio of staff to young people and are generally small facilities.

Information in the *Children Accommodated in Secure Children's Homes* SFR has been derived from statistical data reported to the Department for Education (DfE) by all secure children's homes in England and Wales that were open at 31 March 2013 along with historical data from previous year's collections.

## 2. Methodology

The secure homes return their data as at 31 March to DfE via a data collection form, a copy of which can be found at Annex A. This form collects information on eight areas:

1. Number of approved places (Item 1)
2. Number of places in use or available for use (Item 2)
3. Number of approved places contracted to the Youth Justice Board (YJB) (Item 3)
4. Number of children accommodated (Item 4)
5. Sex of children (Items 5a and 5b)
6. Age of children (Items 6a-h)
7. Length of stay (Items 7a-f)
8. Type of placement (Items 8a-c)

### 2.1. Data cleaning

A number of validation checks are carried out on the data once it is returned to DfE:

- The number of places in use or available for use (Item 2) should be less than or equal to the number of approved places (Item 1)
- The number of approved places contracted to the YJB (Item 3) should be less than or equal to the number of approved places (Item 1)
- The number of children accommodated (Item 3) should be less than or equal to the number of approved places (Item 1) and the number of places in use or available for use (Item 2)
- The total number of males (Item 5a) and females (Item 5b) should be equal to the number of children accommodated (Item 4)
- The total number of children in each age group (Items 6a-h) should be equal to the number of children accommodated (Item 4)
- The total number of children by length of stay (Items 7a-f) should be equal to the number of children accommodated (Item 4)
- The total number of children in each type of placement (Items 8a-c) should be equal to the number of children accommodated (Item 4)

Data is also compared to previous years to ensure there are no unusual changes.

## 2.2. Data Processing

Once all secure children's homes have submitted their data and the validation checks listed above have been carried out, the data is collated into one spread sheet ready for analysis.

## 2.3. Production of Statistical First Release

The SFR contains 3 tables:

**Table 1:** Places approved and children accommodated in secure children's homes at 31 March by gender, age, length of stay and type of placement (numbers and percentages). Coverage: England and Wales.

**Table 2:** Places approved and available, and children accommodated at 31 March 2013 by individual secure children's homes (numbers and percentages). Coverage: England and Wales.

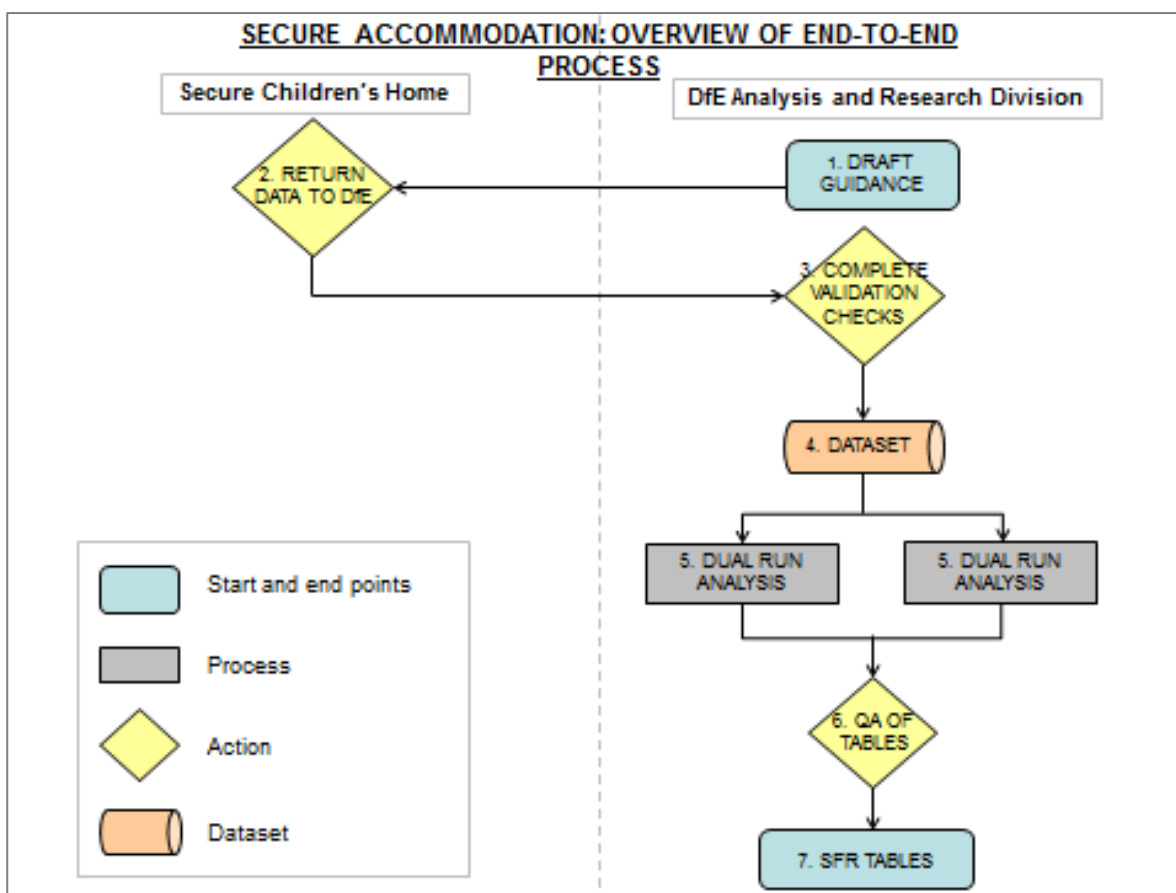
**Table 3:** Places approved and children accommodated in secure children's homes at 31 March by gender, age, length of stay and type of placement (numbers and percentages)

Data in Tables 1 and 2 cover secure children’s homes in England and Wales. Table 3 covers secure children’s homes in England only. Table 2 is the only table to contain home-level information. Data is taken directly from the data collection form. Additional calculations are made to form the percentages shown in the tables.

### 3. Process Map

The process map shown in Figure 1 covers the end to end process of the Secure Accommodation return, from data collection through to publication of the SFR.

**Figure 1: Overview of end to end process of Secure Accommodation collection and publication**



# Annex A: Secure Accommodation Data Collection Form

Department for Education  
Secure Childrens Homes 2013 (SA1)

Each item of this return refers to the position at 31 March 2013

1. Number of places approved for use	<input type="text"/>	1
2. Number of places in use or available for use	<input type="text"/>	2
3. Number of approved places contracted to YJB	<input type="text"/>	3
4. Number of children accommodated	<input type="text"/>	4
5. Sex of children accommodated		
Number of males accommodated	<input type="text"/>	5a
Number of females accommodated	<input type="text"/>	5b
6. Age of children accommodated		
Number aged under 12	<input type="text"/>	6a
12	<input type="text"/>	6b
13	<input type="text"/>	6c
14	<input type="text"/>	6d
15	<input type="text"/>	6e
16	<input type="text"/>	6f
17	<input type="text"/>	6g
18 and over	<input type="text"/>	6h
7. Length of stay (as at 31 March) of children accommodated		
Number accommodated for less than 1 month	<input type="text"/>	7a
1 month or more but less than 3 months	<input type="text"/>	7b
3 months or more but less than 6 months	<input type="text"/>	7c
6 months or more but less than 12 months	<input type="text"/>	7d
12 months or more but less than 24 months	<input type="text"/>	7e
24 months or more	<input type="text"/>	7f
8. Type of placement <sup>1</sup>		
Child detained or sentenced and placed by the Youth Justice Board	<input type="text"/>	8a
Child placed by local authority in a criminal justice context	<input type="text"/>	8b
Child placed by local authority on welfare grounds	<input type="text"/>	8c

<sup>1</sup> Please record the basis that applies at 31 March 2013, **not** on entry



Department  
for Education

© Crown copyright 2013

You may re-use this information (excluding logos) free of charge in any format or medium, under the terms of the Open Government Licence. To view this licence, visit [www.nationalarchives.gov.uk/doc/open-government-licence](http://www.nationalarchives.gov.uk/doc/open-government-licence) or email [psi@nationalarchives.gsi.gov.uk](mailto:psi@nationalarchives.gsi.gov.uk).

Where we have identified any third party copyright information you will need to obtain permission from the copyright holders concerned.

Any enquiries regarding this publication should be sent to us at [www.education.gov.uk/contactus](http://www.education.gov.uk/contactus).

This document is available for download at <https://www.gov.uk/government/organisations/department-for-education/about/statistics>