



21 October 2014

Year: 2014 Week: 42

## In This Issue:

- Key messages.
- Diagnostic indicators at a glance.
- GP practices and denominator population.
- National syndromic indicators.
- Notes and further information.
- Appendix.

## Key messages

Data to: 19 October 2014

Respiratory indicators including upper respiratory tract infection (figure 1) and lower respiratory tract infection (figure 4) continued to increase during week 42, all within seasonally expected levels.

There have been further increases in GP consultations for vomiting (figure 7) have also shown further increases during week 42, particularly in infants (figure 7a).

## Diagnostic indicators at a glance:

| Indicator                         | Trend      | Level                      |
|-----------------------------------|------------|----------------------------|
| Upper respiratory tract infection | increasing | similar to baseline levels |
| Influenza-like illness            | increasing | similar to baseline levels |
| Pharyngitis                       | increasing | above baseline levels      |
| Lower respiratory tract infection | increasing | similar to baseline levels |
| Pneumonia                         | increasing | similar to baseline levels |
| Gastroenteritis                   | increasing | above baseline levels      |
| Vomiting                          | increasing | above baseline levels      |
| Diarrhoea                         | increasing | above baseline levels      |
| Severe asthma                     | increasing | above baseline levels      |
| Wheeze                            | increasing | above baseline levels      |
| Allergic rhinitis                 | no trend   |                            |
| Conjunctivitis                    | no trend   | similar to baseline levels |
| Mumps                             | no trend   | similar to baseline levels |
| Measles                           | no trend   | similar to baseline levels |
| Rubella                           | no trend   | similar to baseline levels |
| Pertussis                         | no trend   | similar to baseline levels |
| Chickenpox                        | increasing | similar to baseline levels |
| Herpes zoster                     | no trend   | similar to baseline levels |
| Cellulitis                        | no trend   | above baseline levels      |
| Impetigo                          | no trend   | similar to baseline levels |

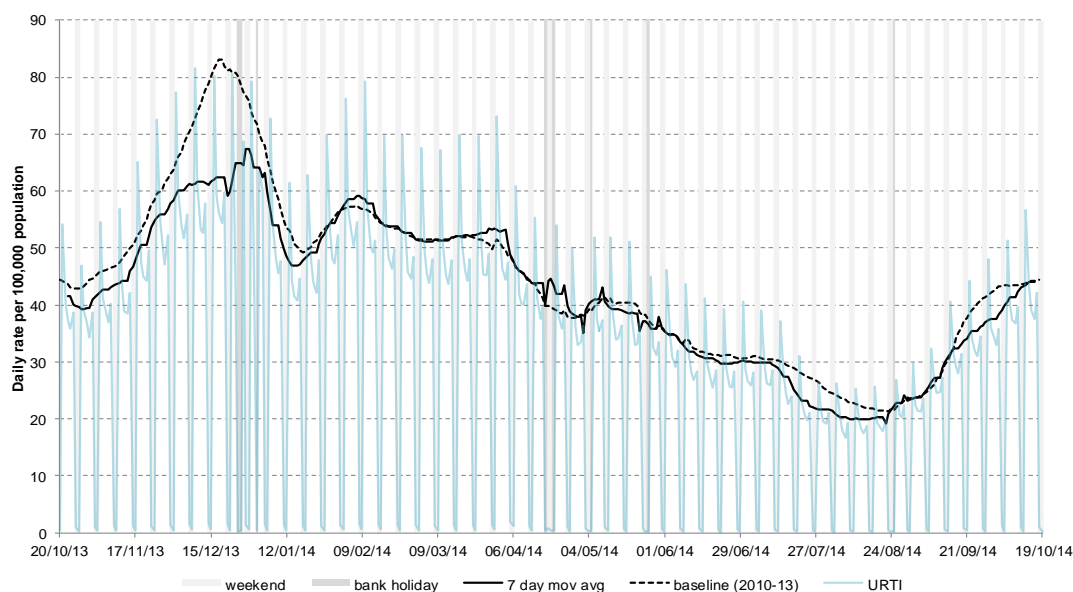
## GP practices and denominator population:

| Year | Week | GP Practices Reporting** | Population size** |
|------|------|--------------------------|-------------------|
| 2014 | 42   | 4646                     | 34.0 million      |

\*\*based on the average number of practices and denominator population in the reporting working week.

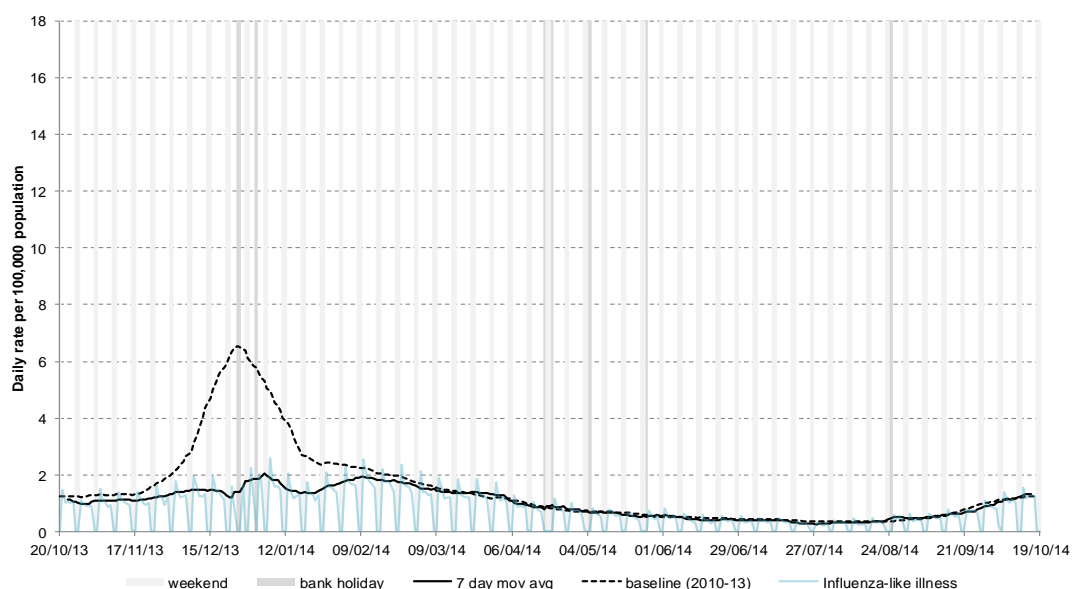
## 1: Upper respiratory tract infection (URTI)

Daily incidence rate (and 7-day moving average\*) per 100,000 population (all England, all ages).



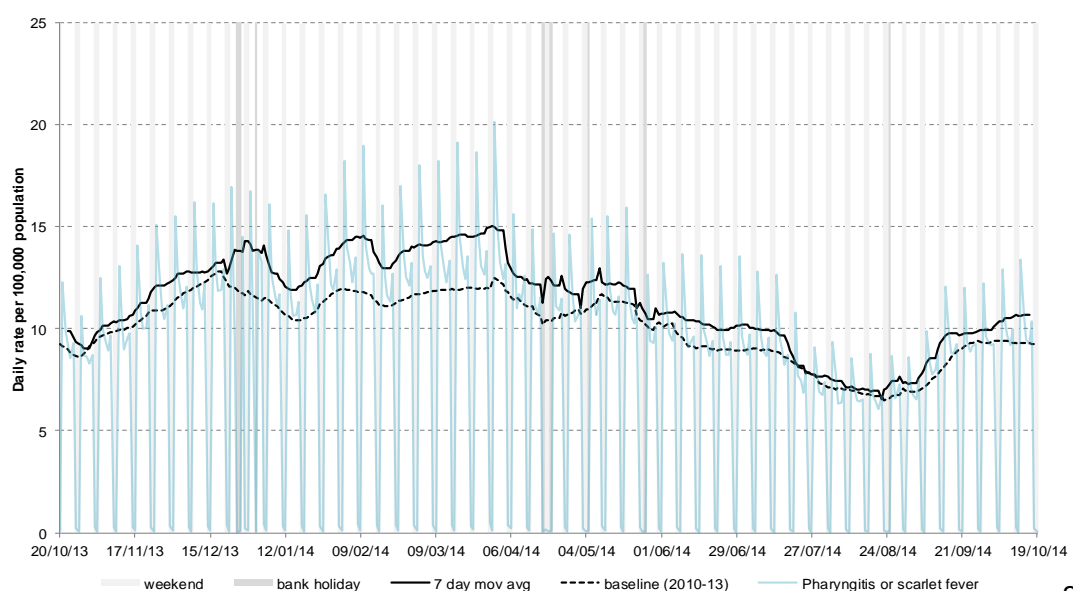
## 2: Influenza-like illness (ILI)

Daily incidence rates (and 7-day moving average\*) per 100,000 population (all England, all ages).



## 3: Pharyngitis or scarlet fever

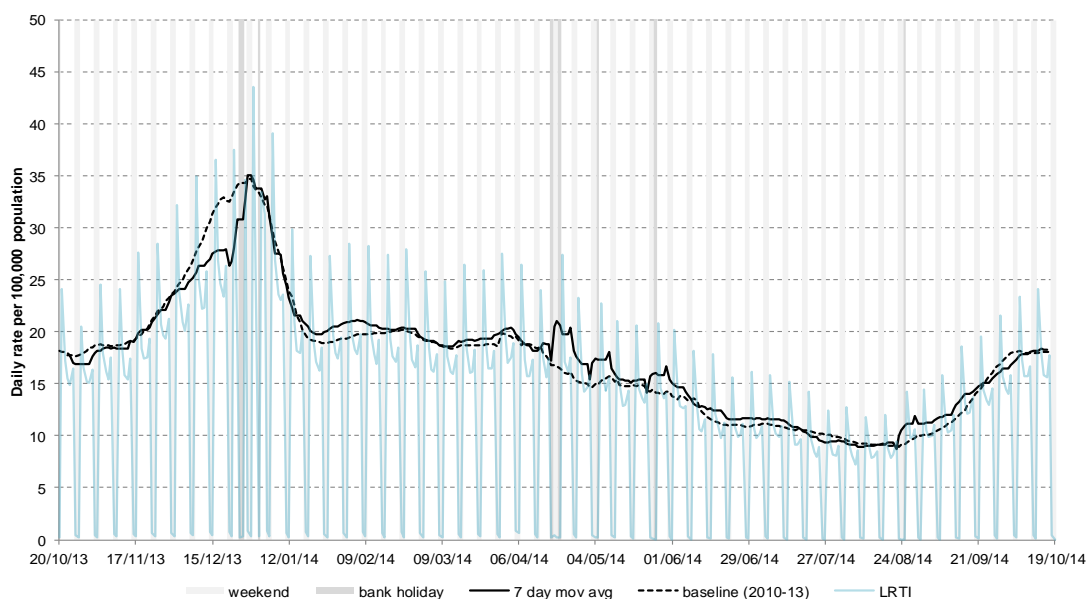
Daily incidence rates (and 7-day moving average\*) per 100,000 population (all England, all ages).



\* 7-day moving average adjusted for bank holidays.

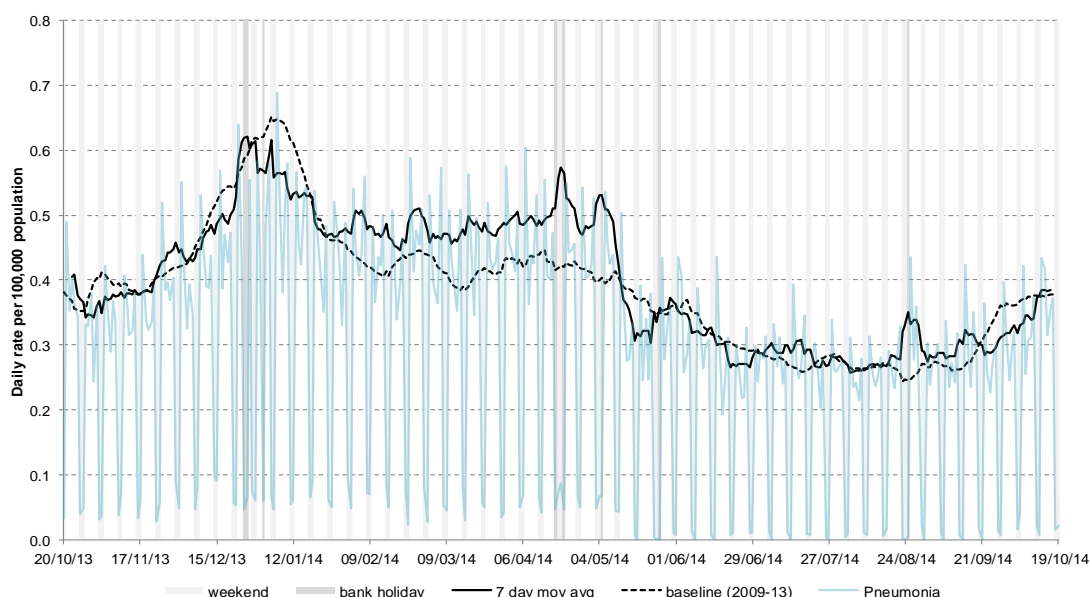
## 4: Lower respiratory tract infection (LRTI)

Daily incidence rate (and 7-day moving average\*) per 100,000 population (all England, all ages).



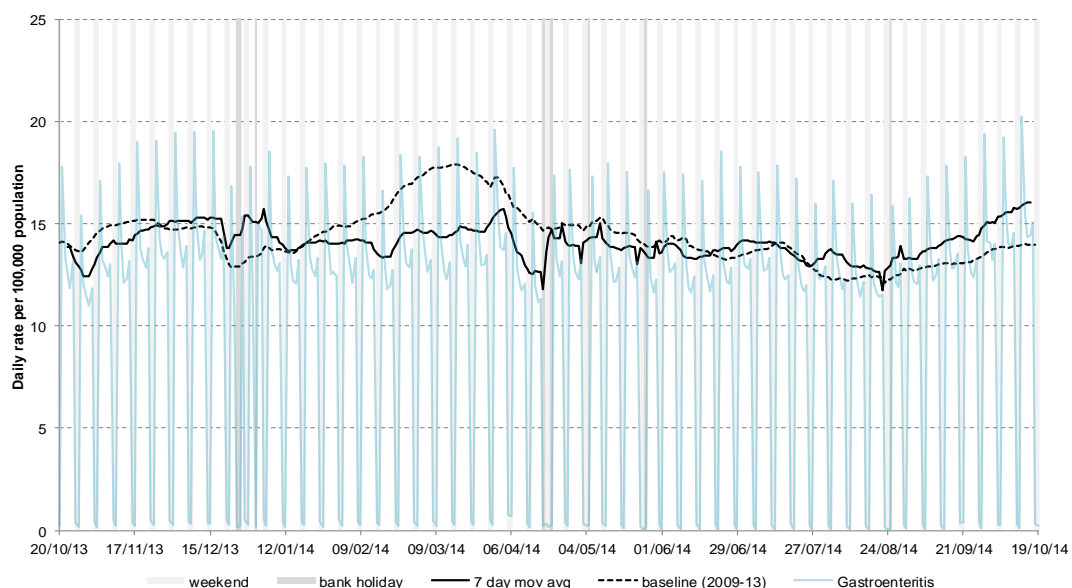
## 5: Pneumonia

Daily incidence rate (and 7-day moving average\*) per 100,000 population (all England, all ages).



## 6: Gastroenteritis

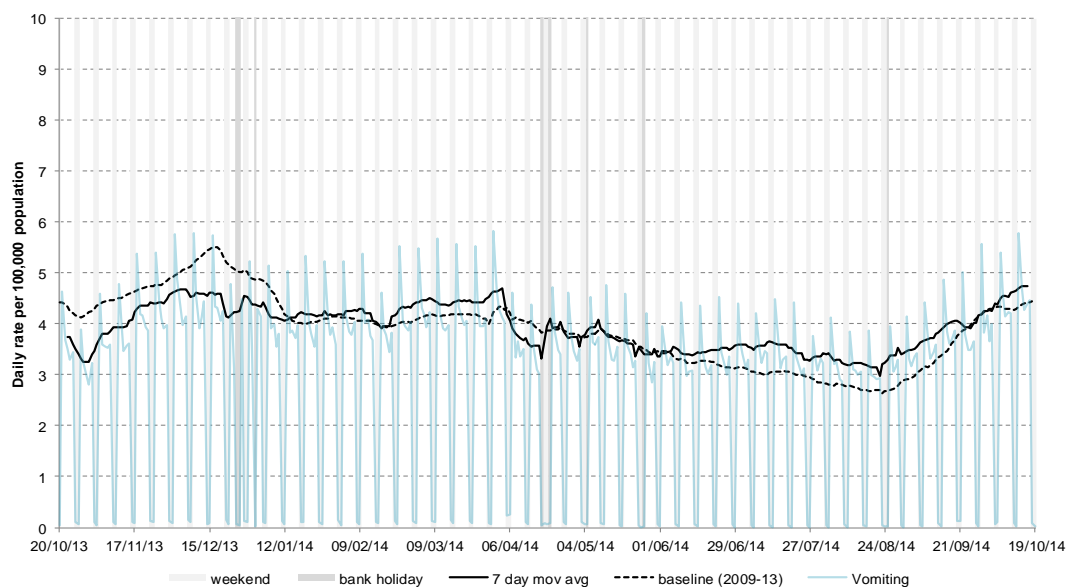
Daily incidence rate (and 7-day moving average\*) per 100,000 population (all England, all ages).



\* 7-day moving average adjusted for bank holidays.

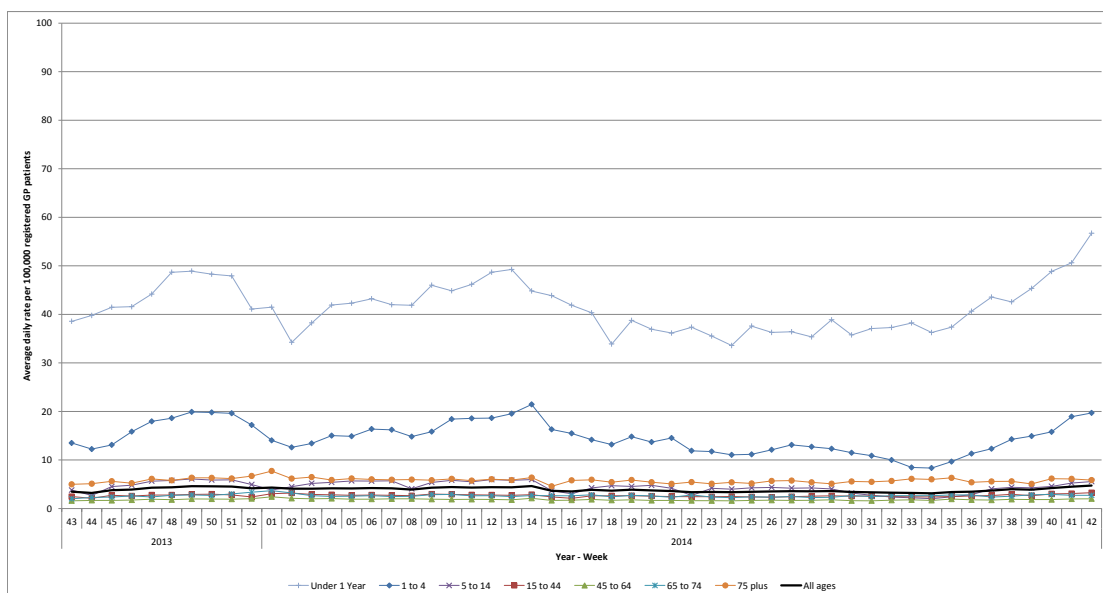
## 7: Vomiting

Daily incidence rate (and 7-day moving average\*) per 100,000 population (all England, all ages).



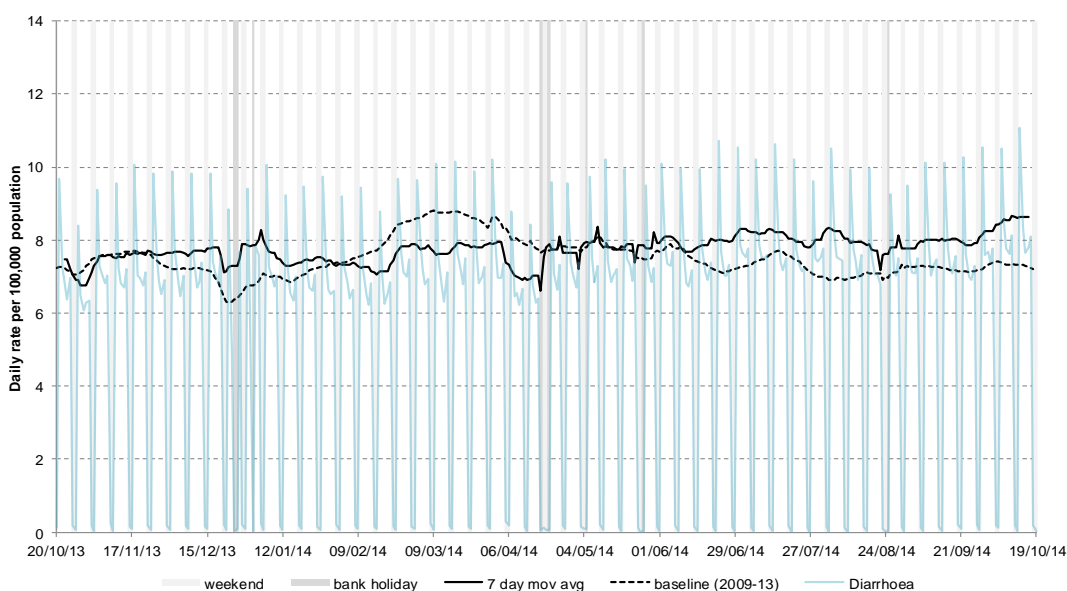
## 7a: Vomiting by age

Average daily incidence rate by week per 100,000 population (all England).



## 8: Diarrhoea

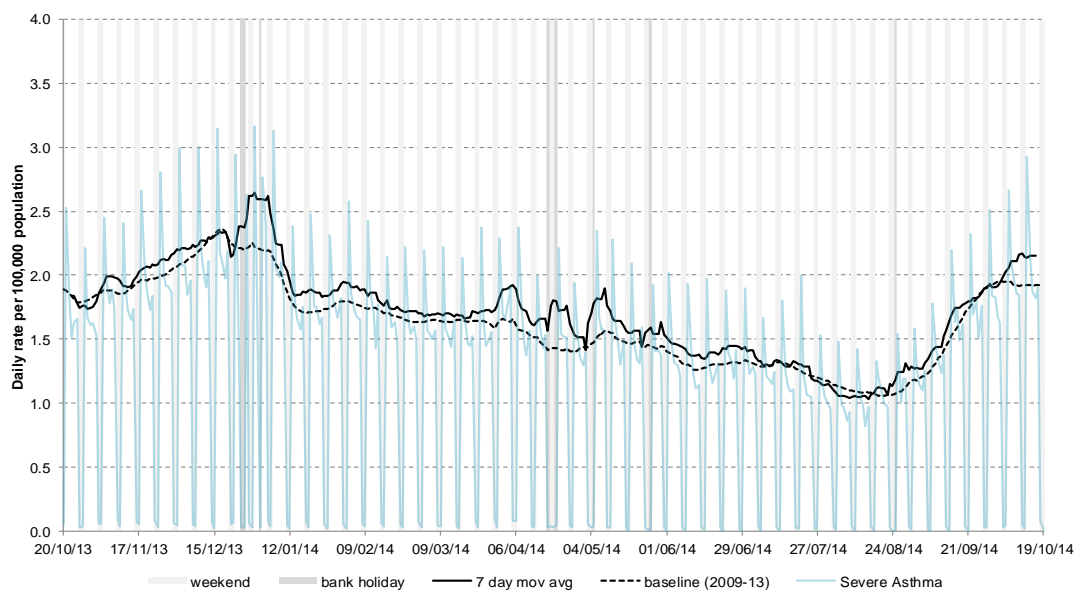
Daily incidence rate (and 7-day moving average\*) per 100,000 population (all England, all ages).



\* 7-day moving average adjusted for bank holidays.

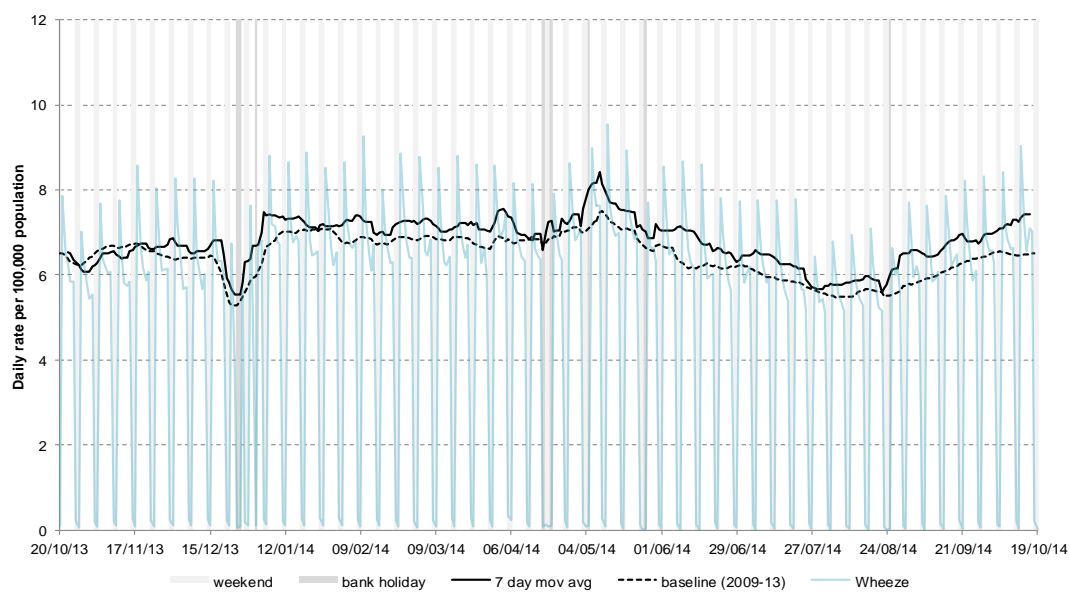
## 10: Severe asthma

Daily incidence rate (and 7-day moving average\*) per 100,000 population (all England, all ages).



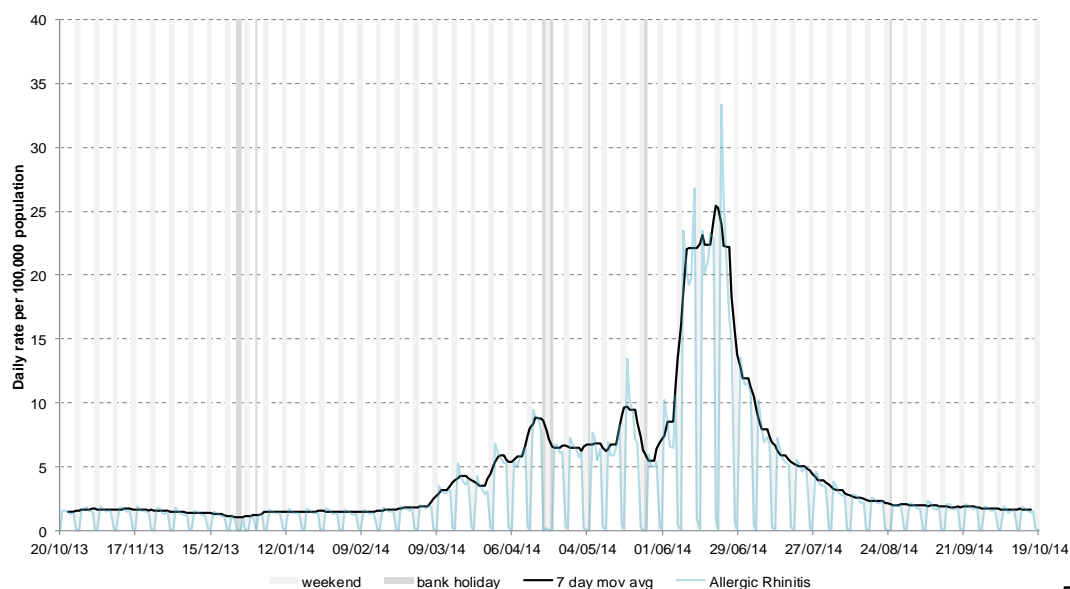
## 11: Wheeze

Daily incidence rate (and 7-day moving average\*) per 100,000 population (all England, all ages).



## 12: Allergic rhinitis

Daily incidence rate (and 7-day moving average\*) per 100,000 population (all England, all ages).



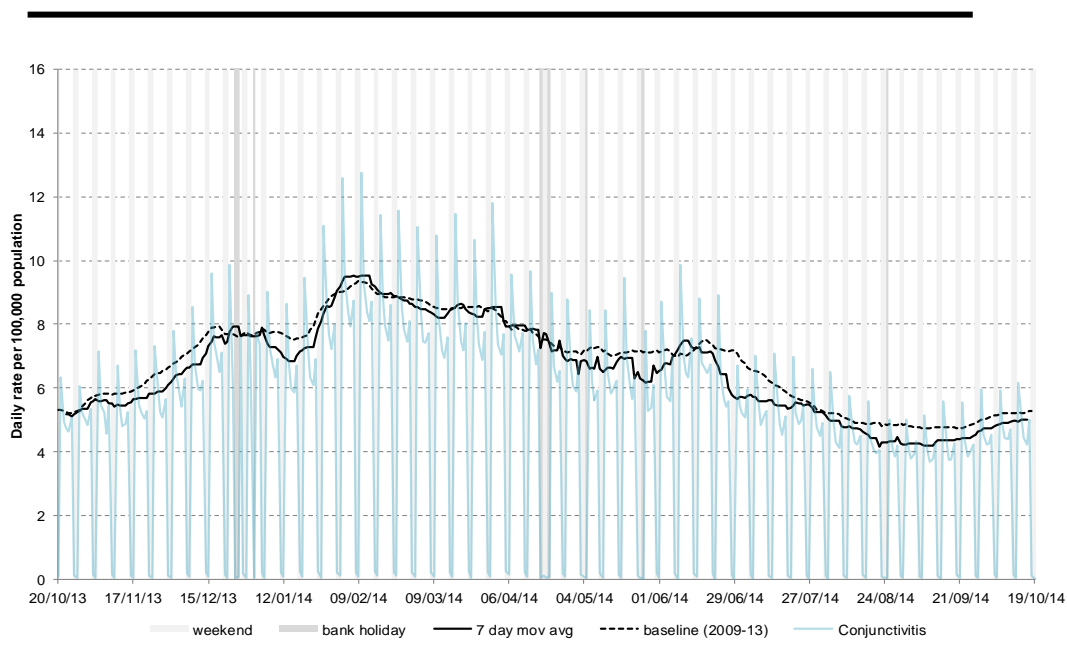
\* 7-day moving average adjusted for bank holidays.

### 13: Intentionally left blank

Intentionally left blank.

### 14: Conjunctivitis

Daily incidence rate (and 7-day moving average\*) per 100,000 population (all England, all ages).



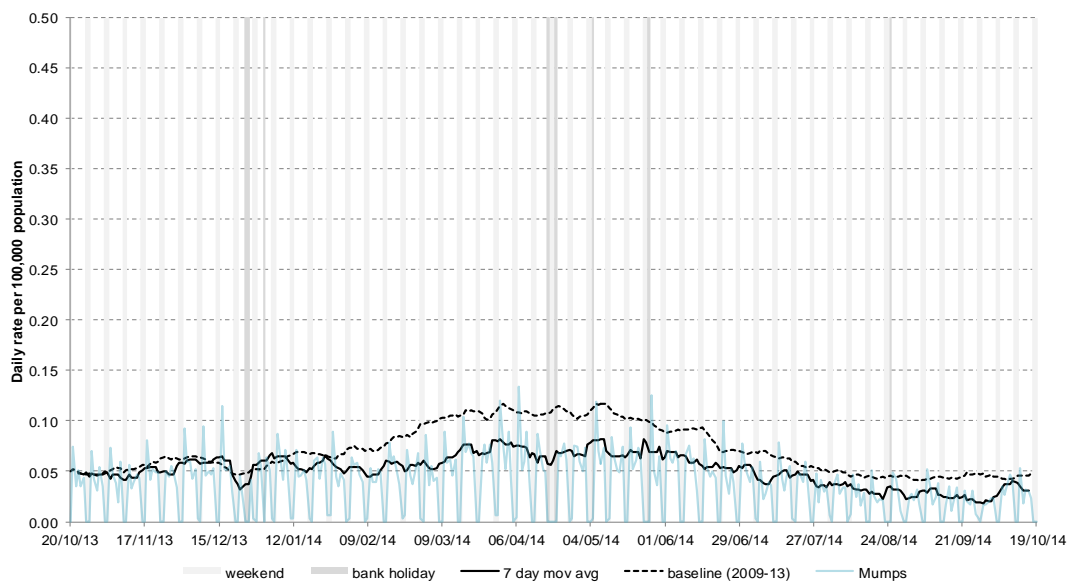
### 15: Intentionally left blank

Intentionally left blank.

\* 7-day moving average adjusted for bank holidays.

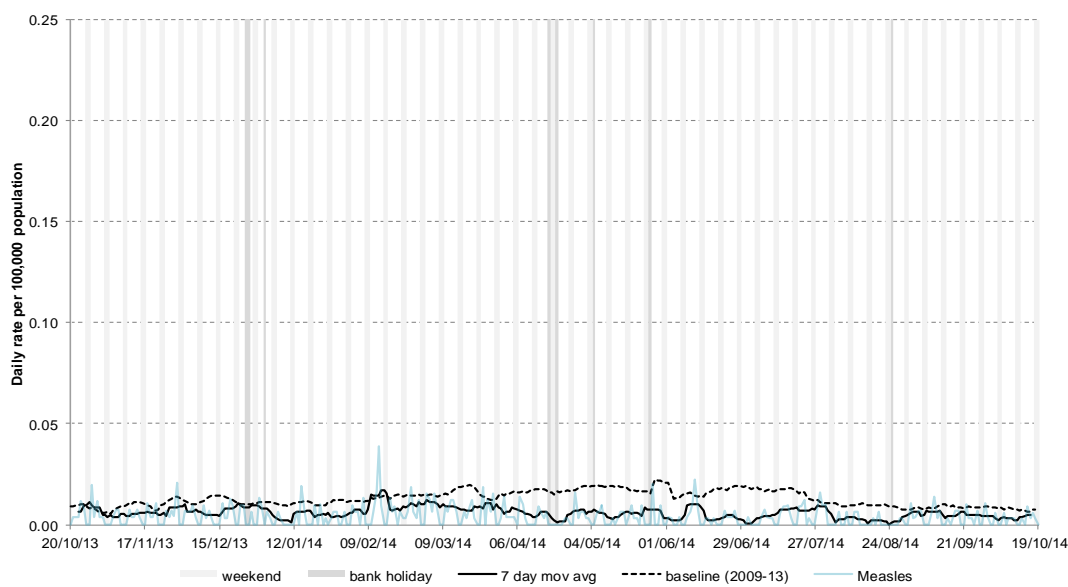
## 16: Mumps

Daily incidence rate (and 7-day moving average\*) per 100,000 population (all England, all ages).



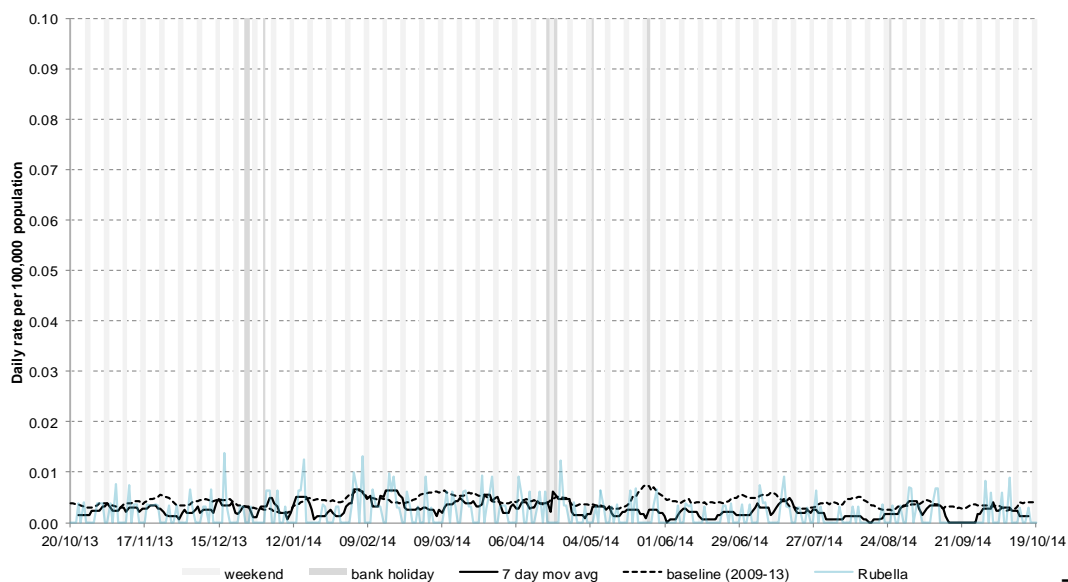
## 17: Measles

Daily incidence rate (and 7-day moving average\*) per 100,000 population (all England, all ages).



## 18: Rubella

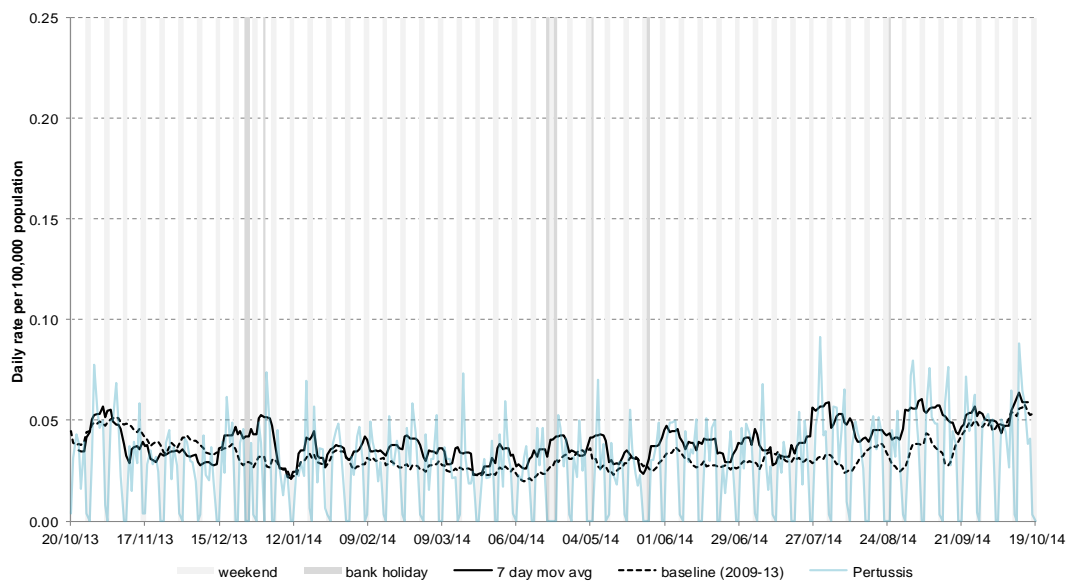
Daily incidence rate (and 7-day moving average\*) per 100,000 population (all England, all ages).



\* 7-day moving average adjusted for bank holidays.

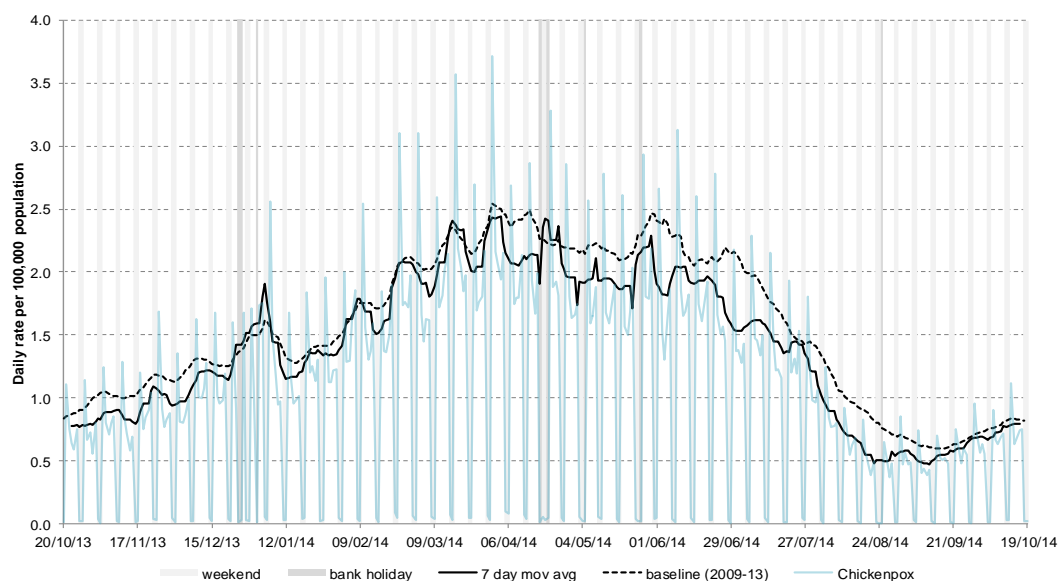
## 19: Pertussis

Daily incidence rate (and 7-day moving average\*) per 100,000 population (all England, all ages).



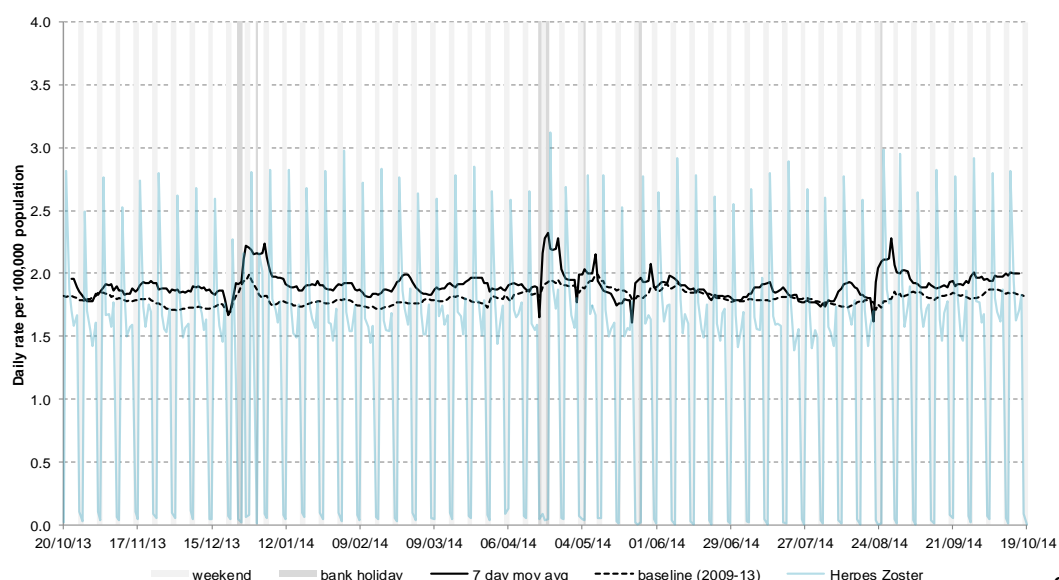
## 20: Chickenpox

Daily incidence rate (and 7-day moving average\*) per 100,000 population (all England, all ages).



## 21: Herpes zoster

Daily incidence rate (and 7-day moving average\*) per 100,000 population (all England, all ages).

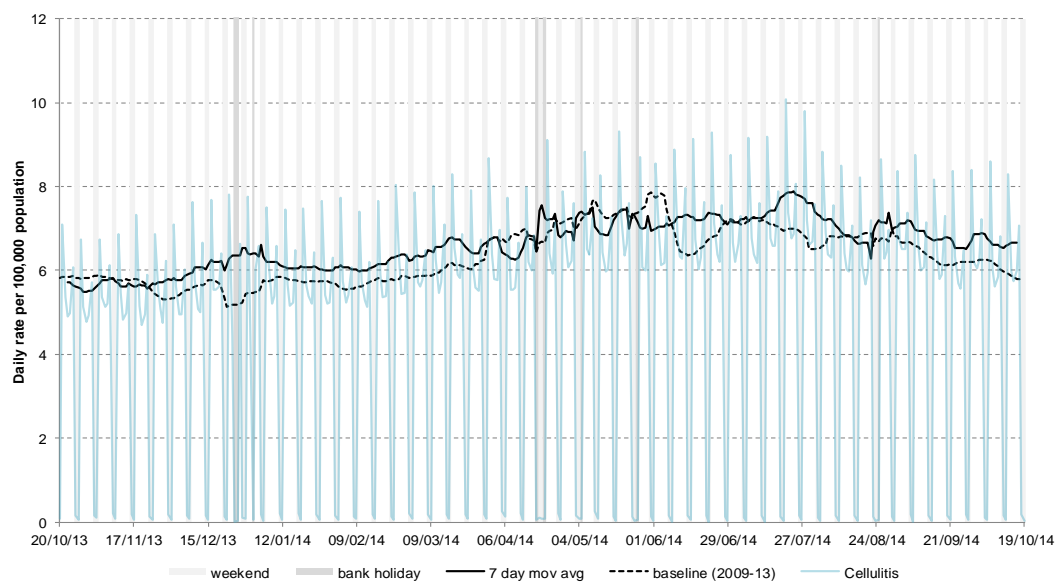


\* 7-day moving average adjusted for bank holidays.



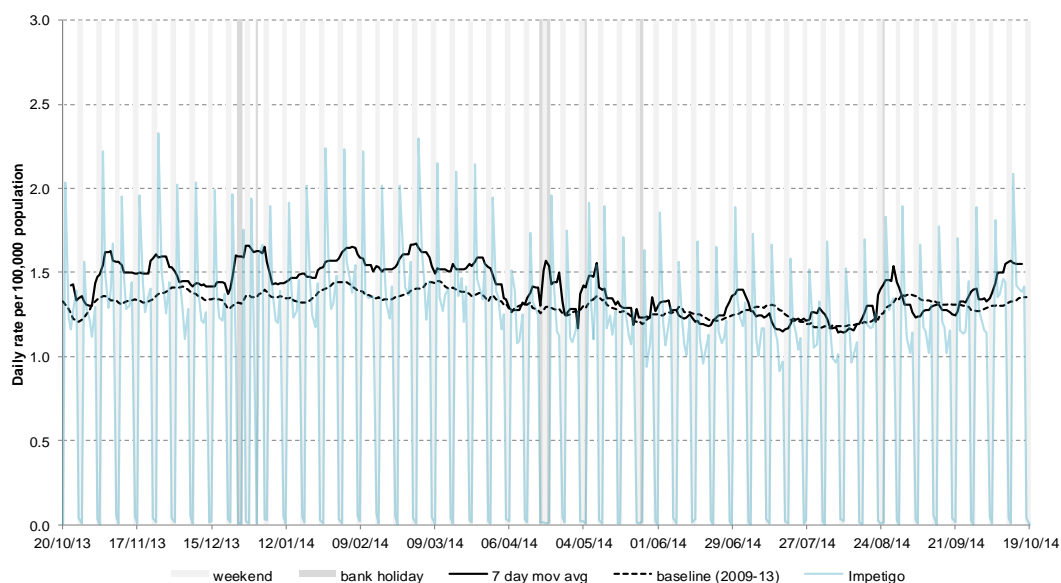
## 22: Cellulitis

Daily incidence rate (and 7-day moving average\*) per 100,000 population (all England, all ages).



## 23: Impetigo

Daily incidence rate (and 7-day moving average\*) per 100,000 population (all England, all ages).



## 24: Intentionally left blank

Intentionally left blank.

\* 7-day moving average adjusted for bank holidays.

## Notes and further information

- The Public Health England GP in hours surveillance system is a syndromic surveillance system monitoring community-based morbidity recorded by GP practices.
- This system captures anonymised GP morbidity data from two GP clinical software systems, EMIS, from version 1 of the QSurveillance® database, and TPP SystmOne.
- Historic baselines are smoothed to remove bank holiday effects. Data from 2009 has been excluded for selected indicators which were affected by the H1N1 influenza pandemic. No baseline is currently included for allergic rhinitis.
- The appendix illustrates weekly GP in hours consultation data for influenza-like illness (ILI). Each PHE Centre is represented by a thematic map showing its constituent local authorities (LA) coloured according to the weekly consultation rate of ILI per 100,000 population.
- The maps on the following pages contains Ordnance Survey data © Crown copyright and database right 2014. Contains National Statistics data © Crown copyright and database right 2014.

## Acknowledgements:

---

We thank and acknowledge the University of Nottingham, ClinRisk® and the contribution of EMIS and EMIS practices. Data source: version 1 of the QSurveillance® database.

We thank TPP, ResearchOne and the SystmOne GP practices contributing to this surveillance system.

---

---

### GP In Hours Syndromic Surveillance System Bulletin.

**Produced by:** PHE Real-time Syndromic Surveillance Team  
6<sup>th</sup> Floor, 5 St Philip's Place, Birmingham, B3 2PW

**Tel:** 0344 225 3560 > Option 4 > Option 2

**Fax:** 0121 236 2215

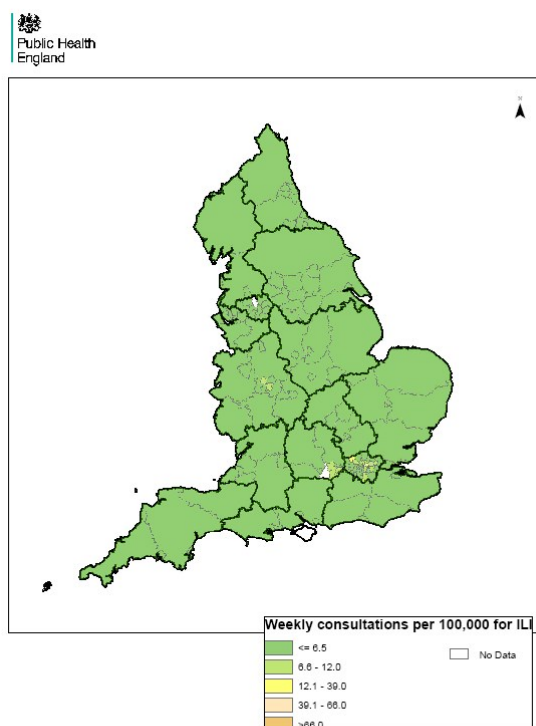
**Web:** <https://www.gov.uk/government/collections/syndromic-surveillance-systems-and-analyses>

**Contact ReSST:**  
syndromic-surveillance  
@phe.gov.uk

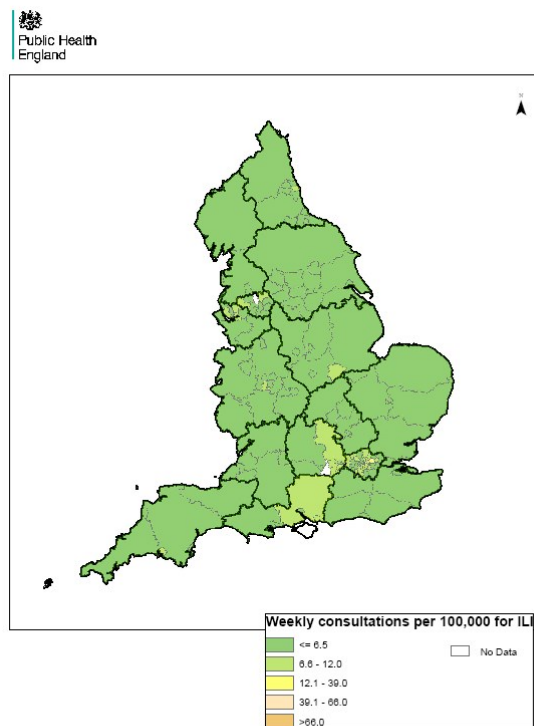
## England

Weekly ILI  
consultation  
rate by LA  
for England

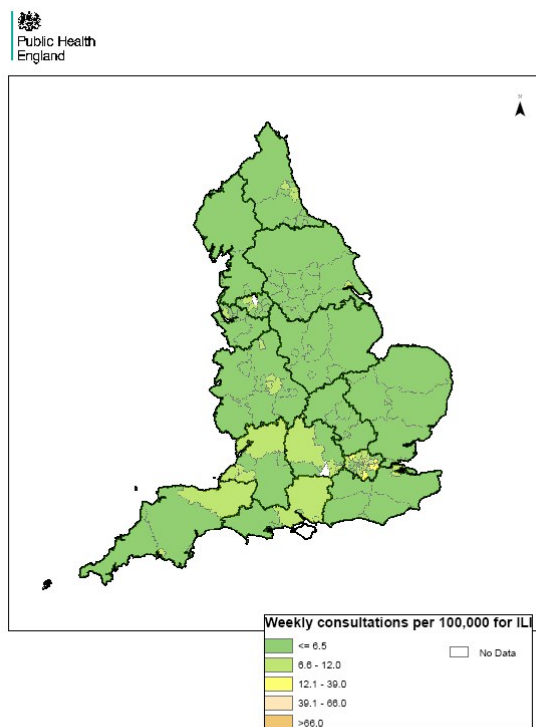
### Week 39



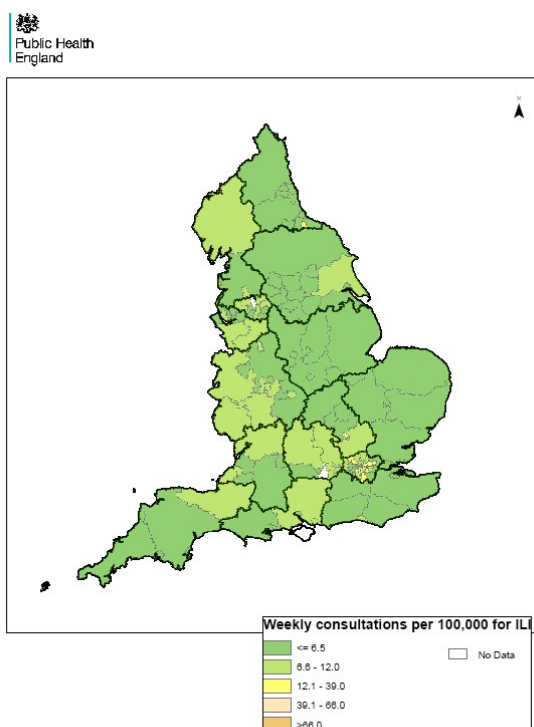
### Week 40



### Week 41



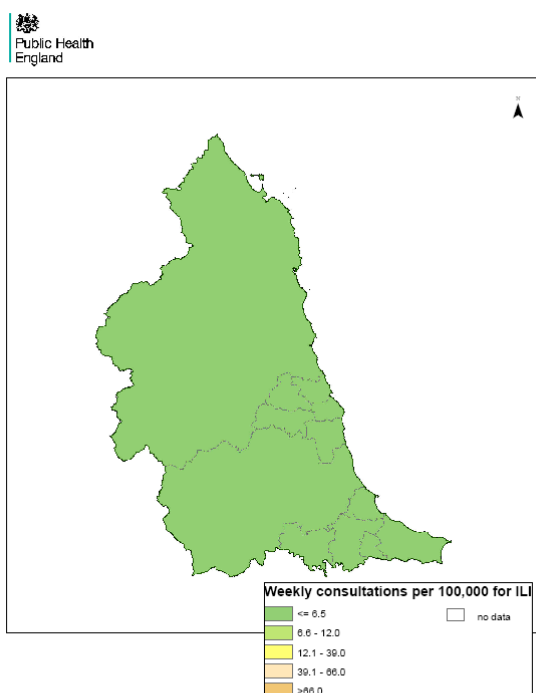
### Week 42



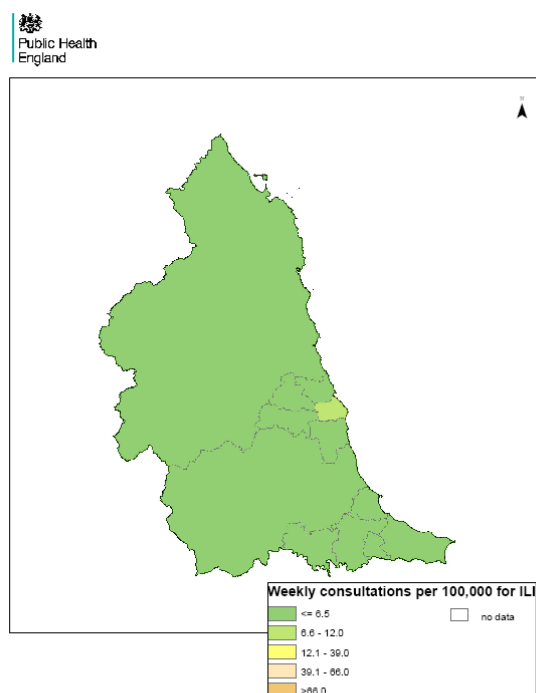
## North East

Weekly ILI  
consultation  
rate by LA  
for North  
East PHE  
Centre

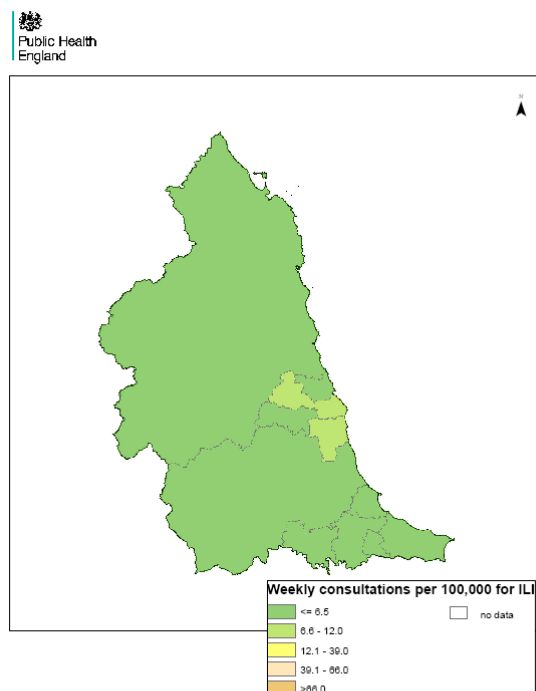
### Week 39



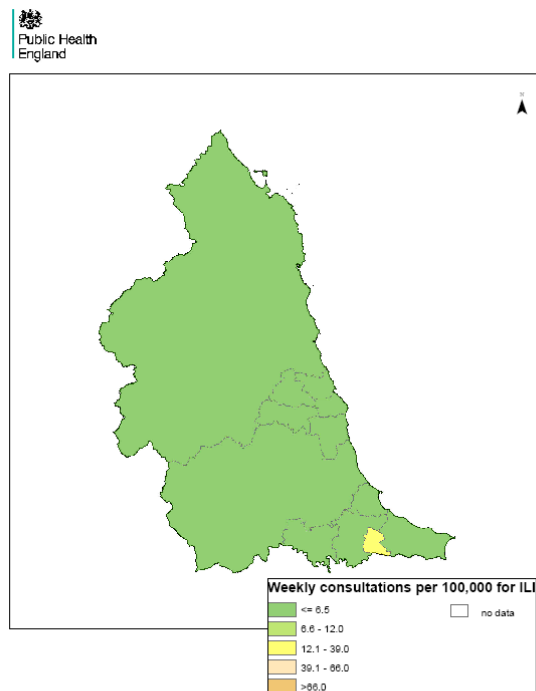
### Week 40



### Week 41



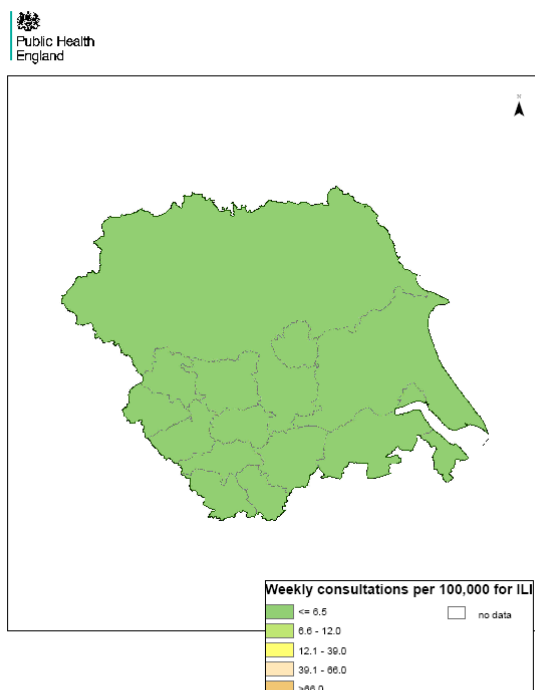
### Week 42



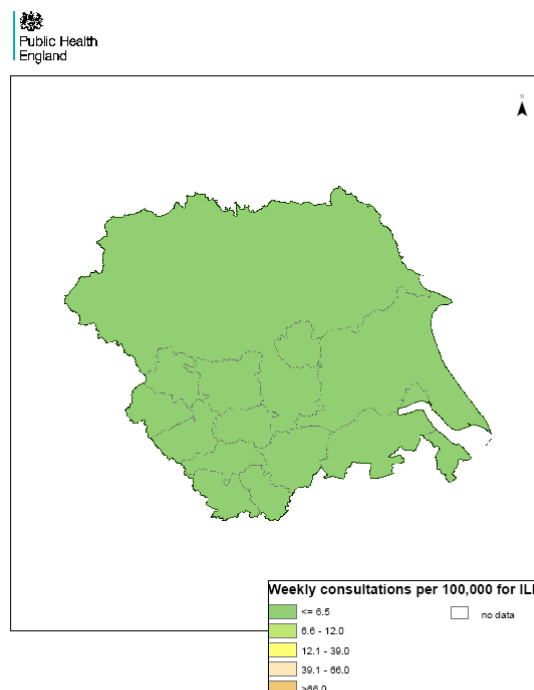
## Yorkshire & Humber

Weekly ILI consultation rate by LA for Yorkshire & Humber PHE Centre

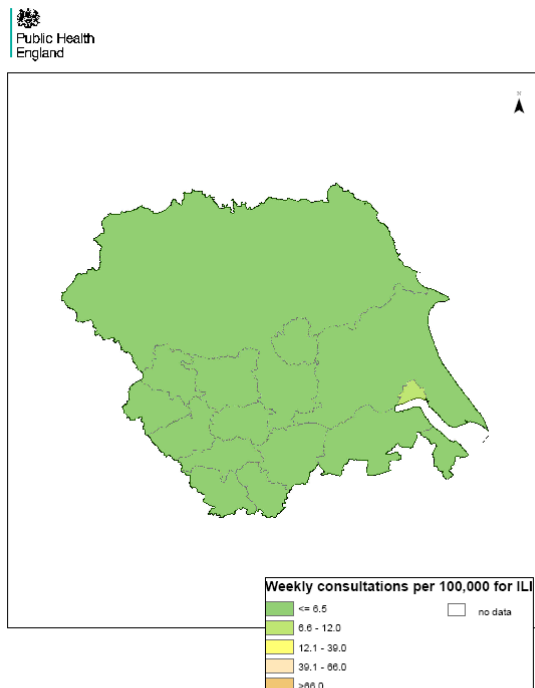
### Week 39



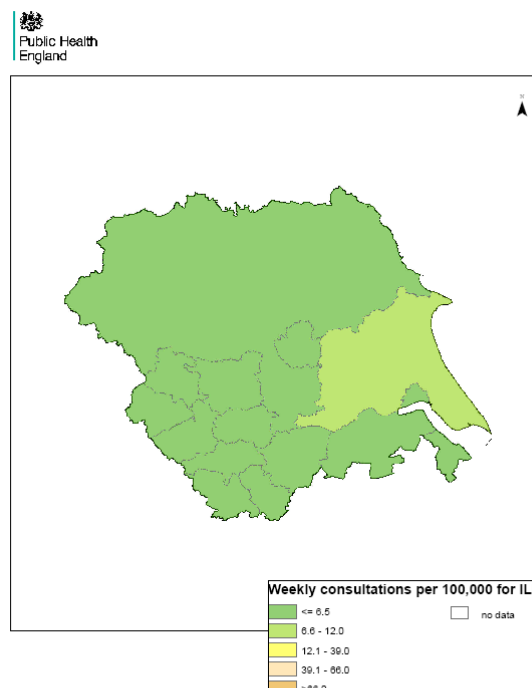
### Week 40



### Week 41



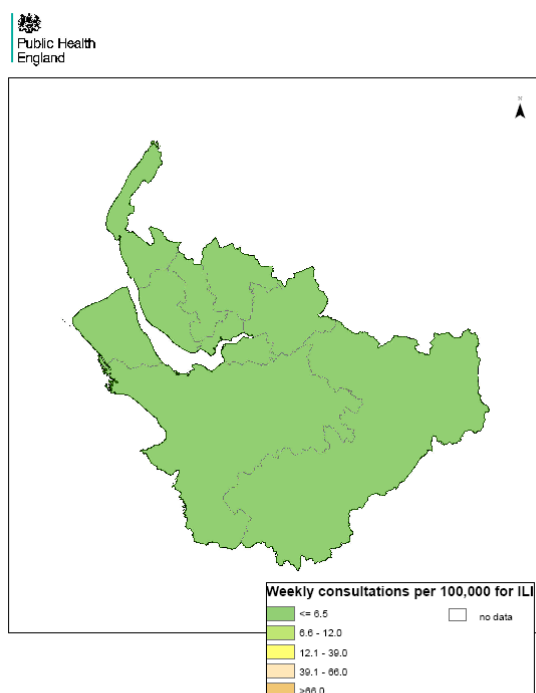
### Week 42



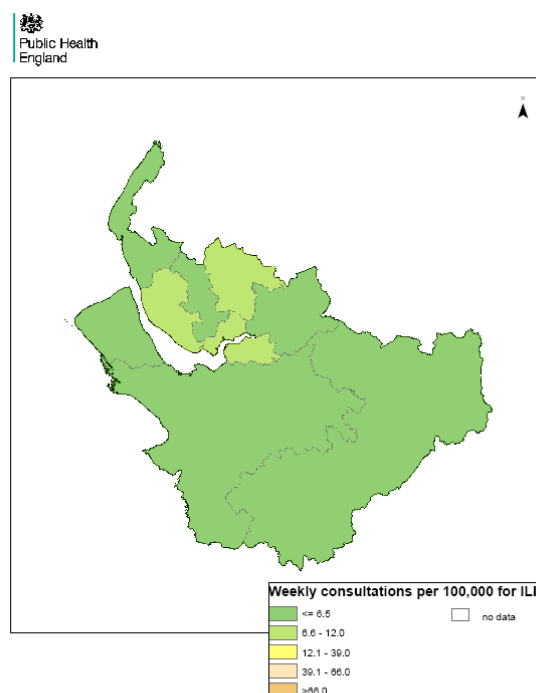
## Cheshire & Merseyside

Weekly ILI consultation rate by LA for Cheshire & Merseyside PHE Centre

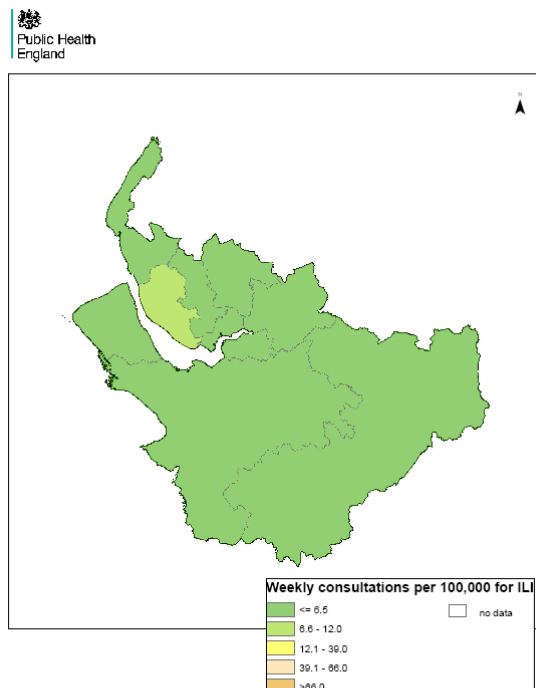
Week 39



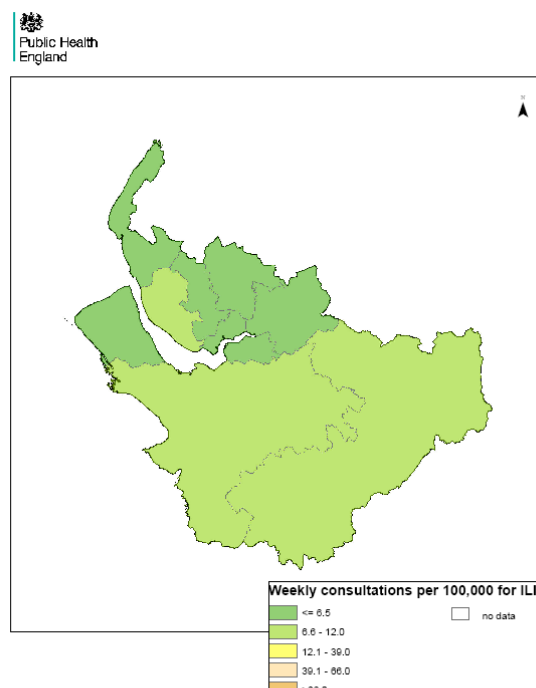
Week 40



Week 41



Week 42



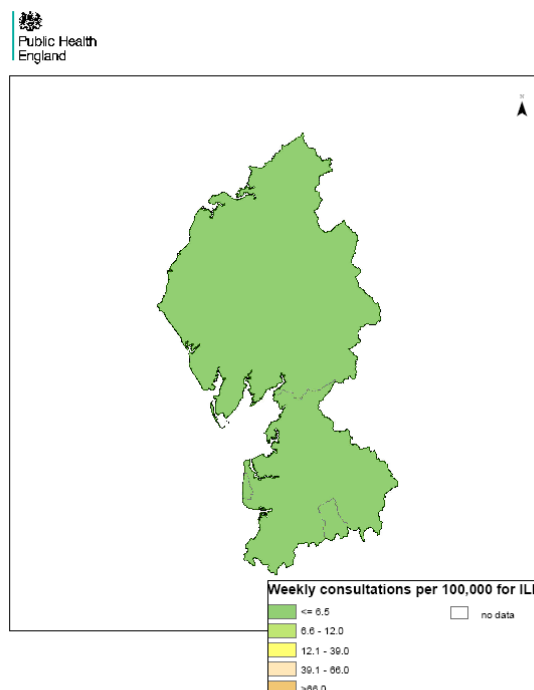
## Cumbria & Lancashire

Weekly ILI consultation rate by LA for Cumbria & Lancashire PHE Centre

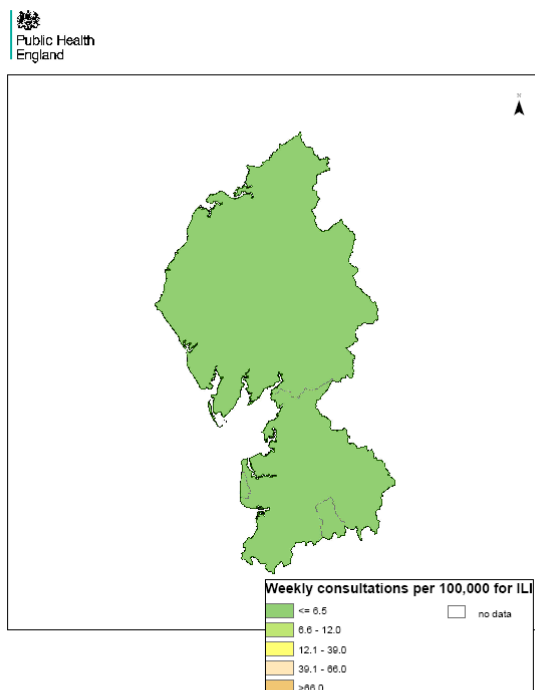
**Week 39**



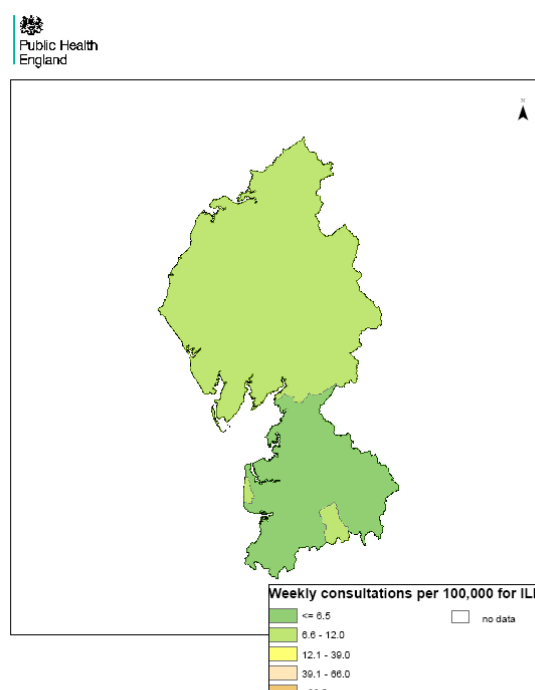
**Week 40**



**Week 41**



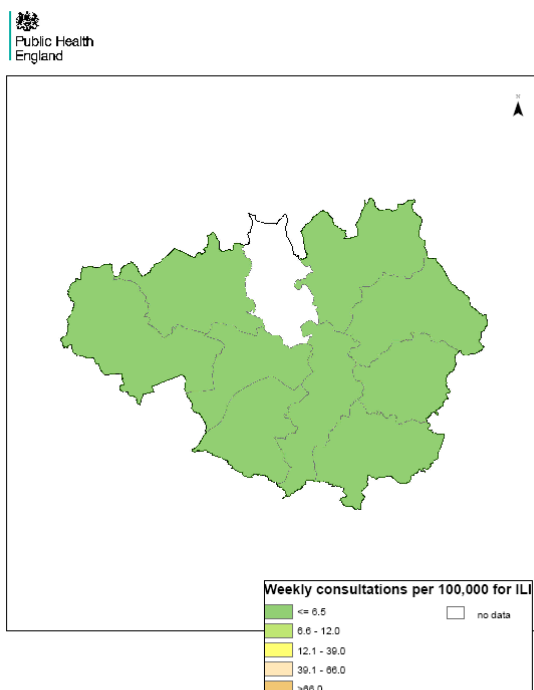
**Week 42**



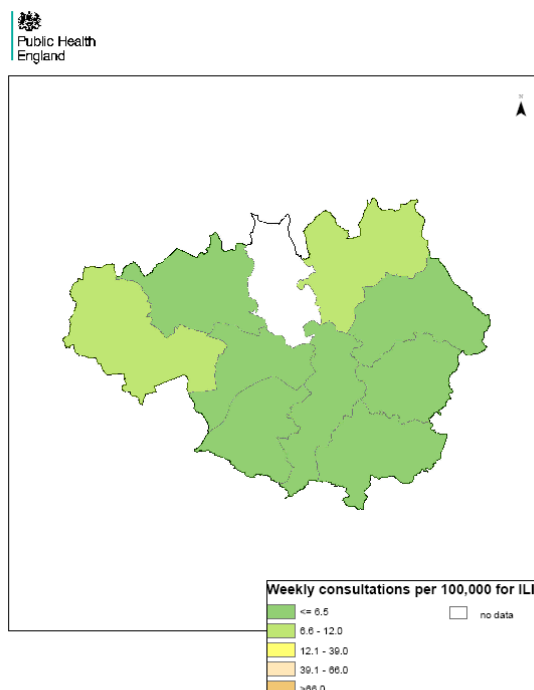
## 5: Greater Manchester

Weekly ILI consultation rate by LA for Greater Manchester PHE Centre

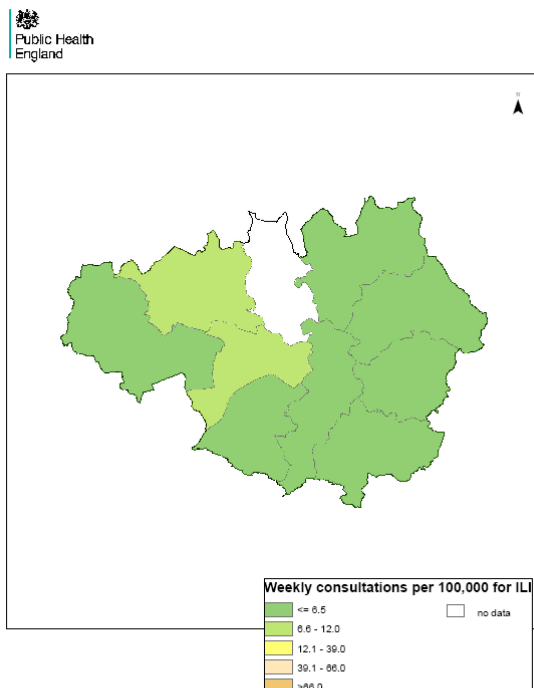
Week 39



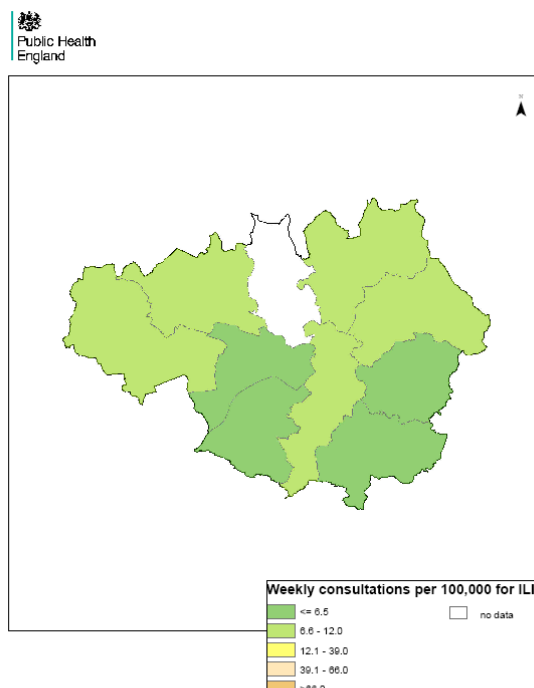
Week 40



Week 41



Week 42

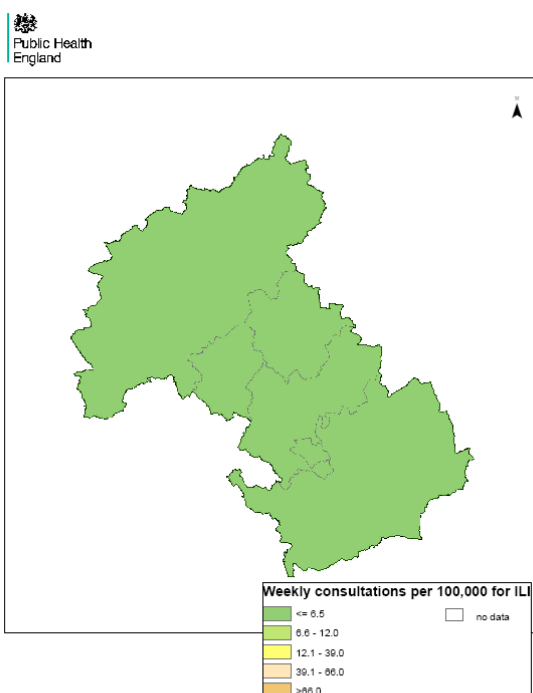




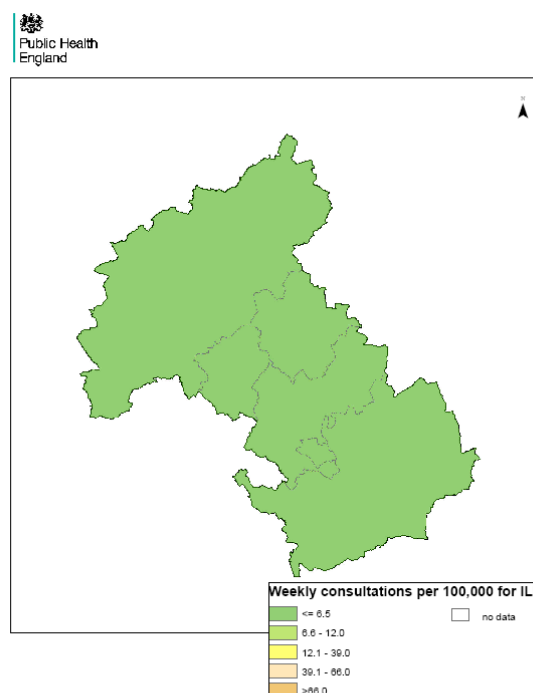
**South  
Midlands &  
Hertfordshire**

Weekly ILI  
consultation  
rate by LA  
for South  
Midlands &  
Hertfordshire  
PHE Centre

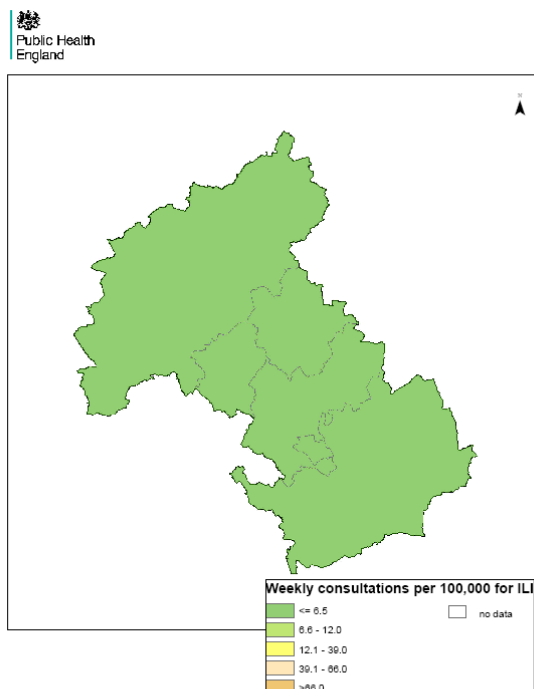
**Week 39**



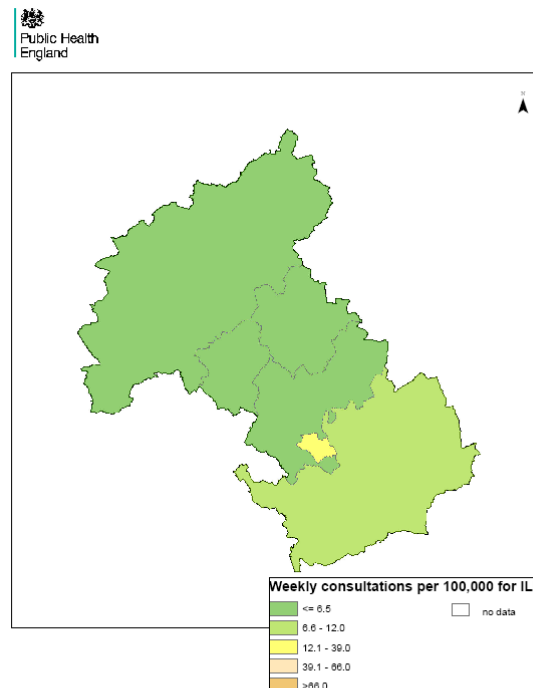
**Week 40**



**Week 41**



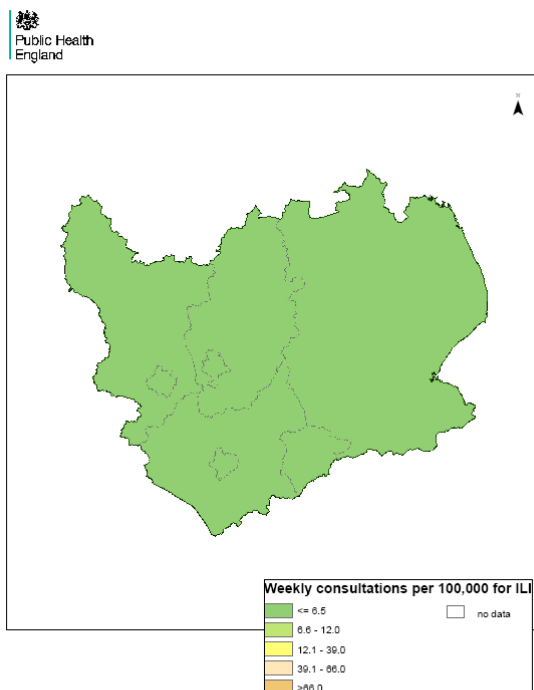
**Week 42**



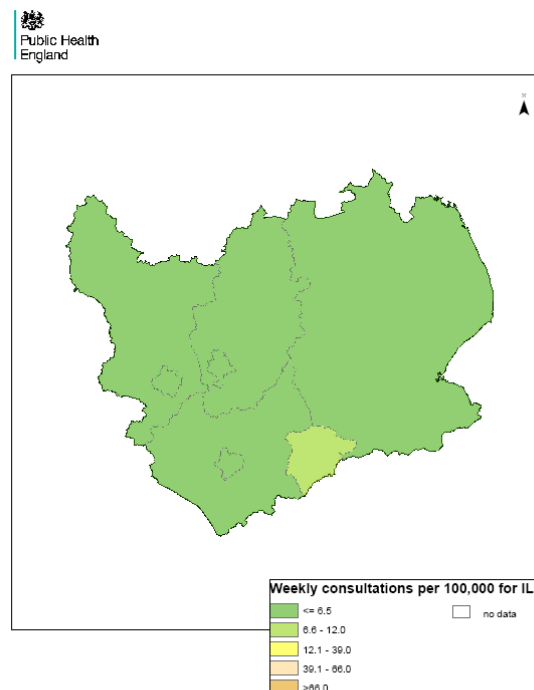
**East  
Midlands**

Weekly ILI  
consultation  
rate by LA  
for East  
Midlands  
PHE Centre

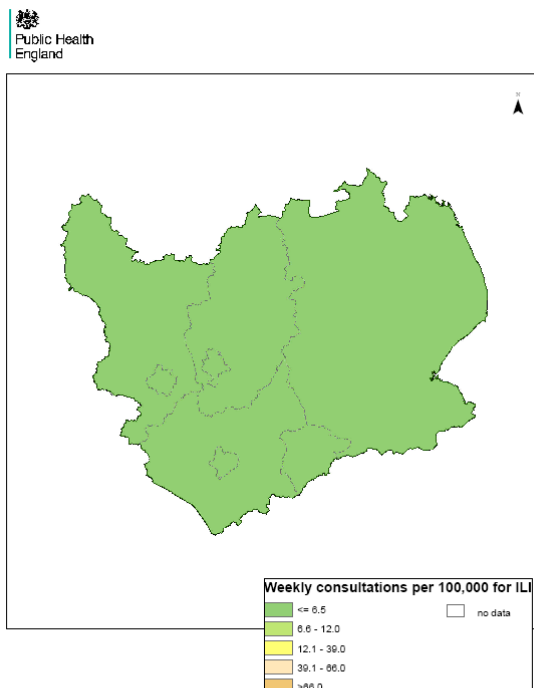
**Week 39**



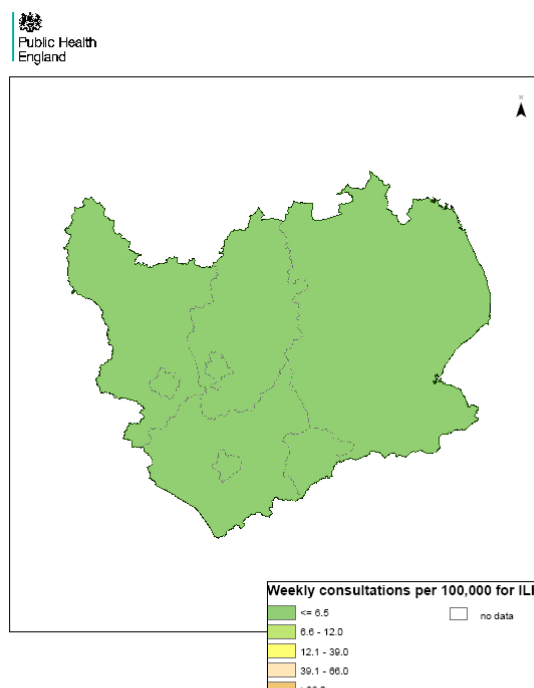
**Week 40**



**Week 41**



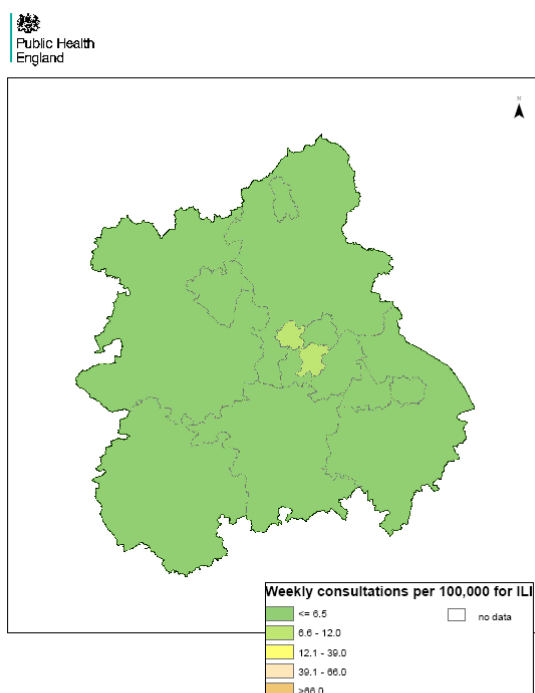
**Week 42**



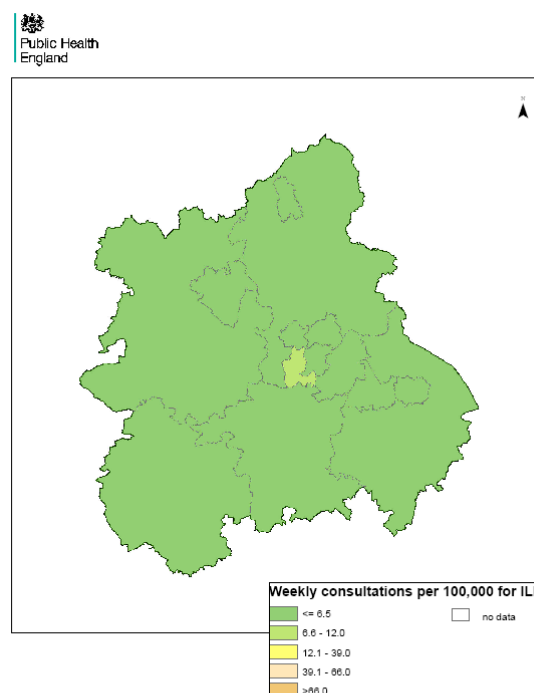
**West  
Midlands**

Weekly ILI  
consultation  
rate by LA  
for West  
Midlands  
PHE Centre

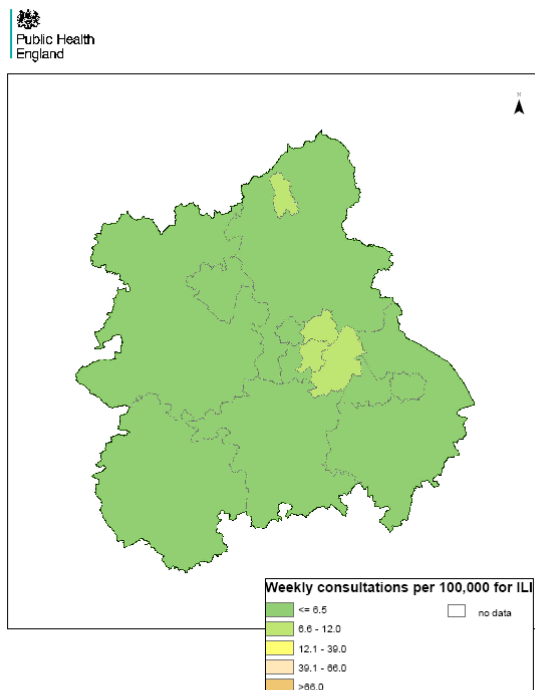
**Week 39**



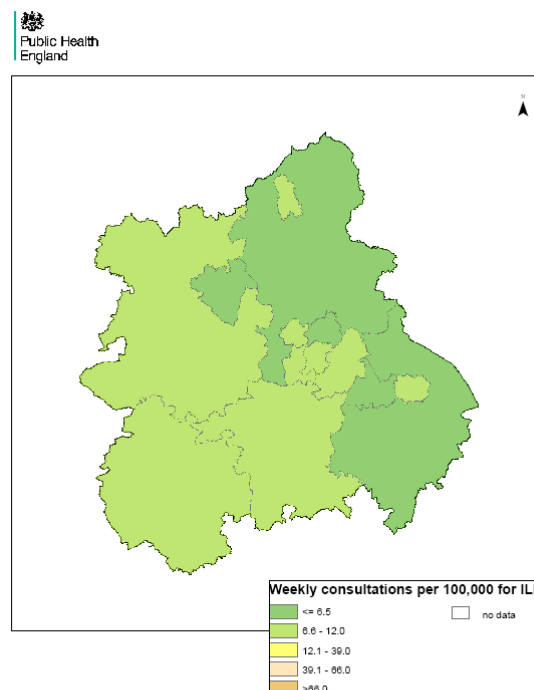
**Week 40**



**Week 41**



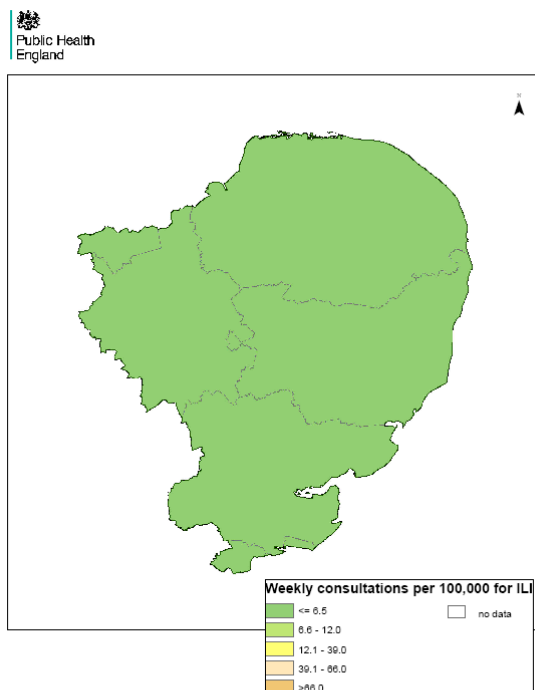
**Week 42**



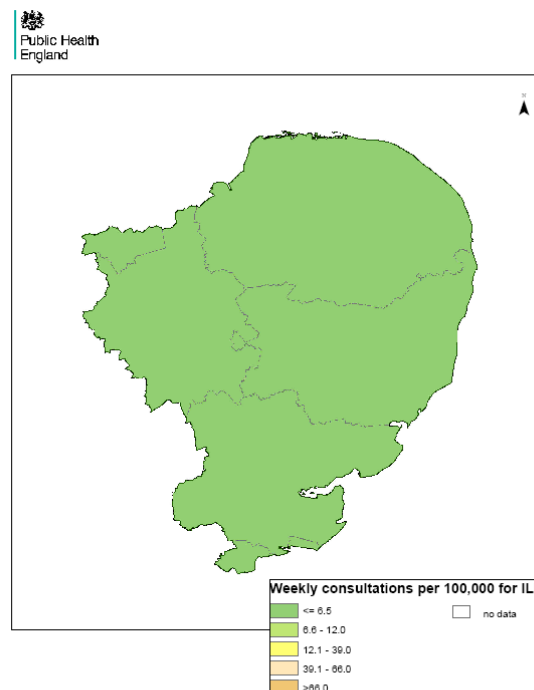
## Anglia & Essex

Weekly ILI  
consultation  
rate by LA  
for Anglia &  
Essex PHE  
Centre

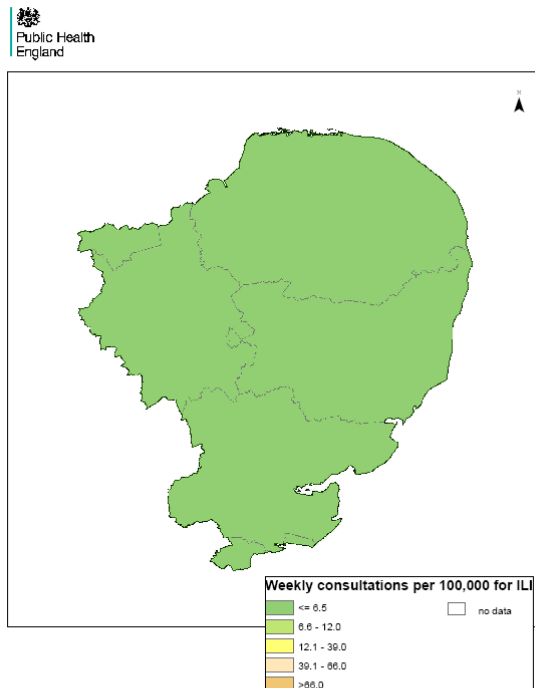
**Week 39**



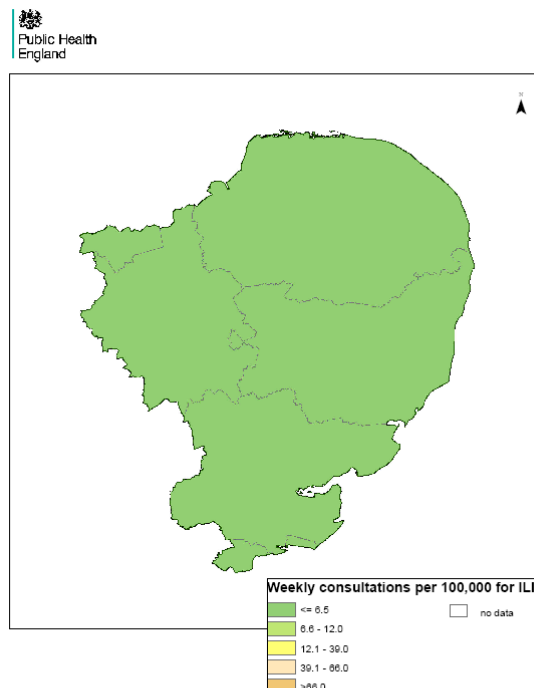
**Week 40**



**Week 41**



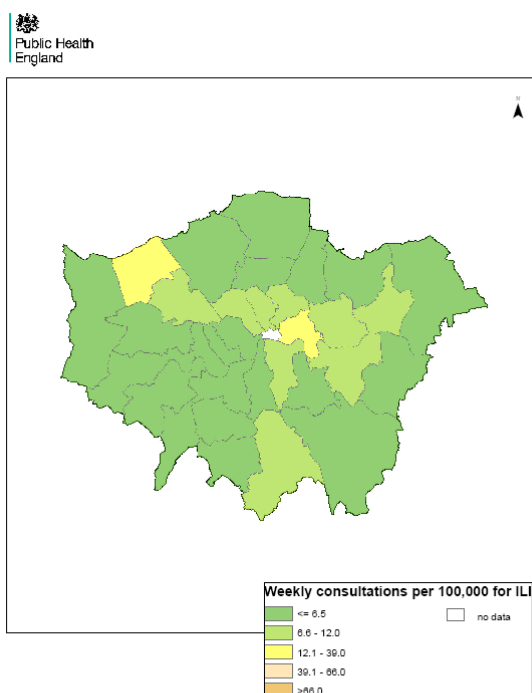
**Week 42**



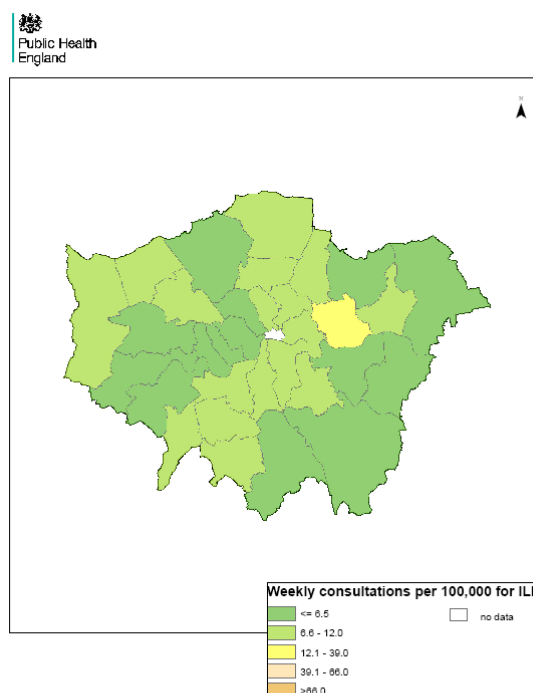
## London

Weekly ILI  
consultation  
rate by LA  
for London  
PHE Centre

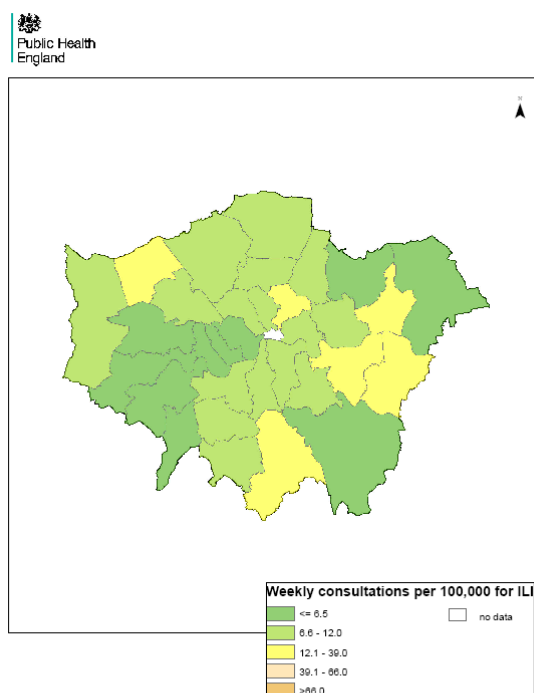
### Week 39



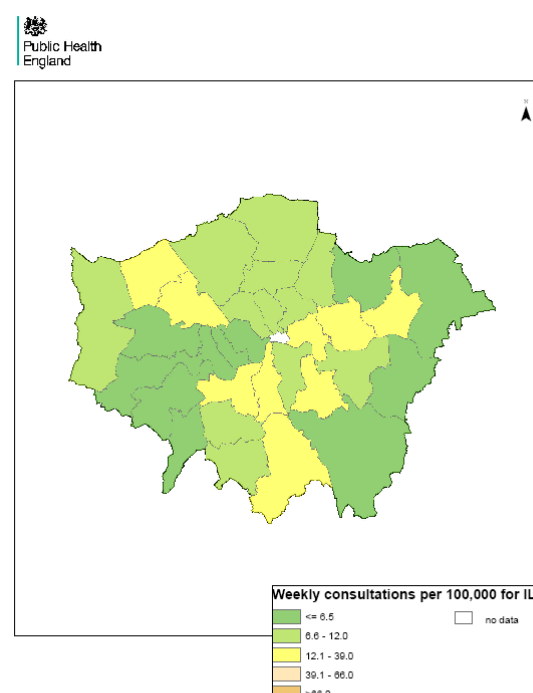
### Week 40



### Week 41



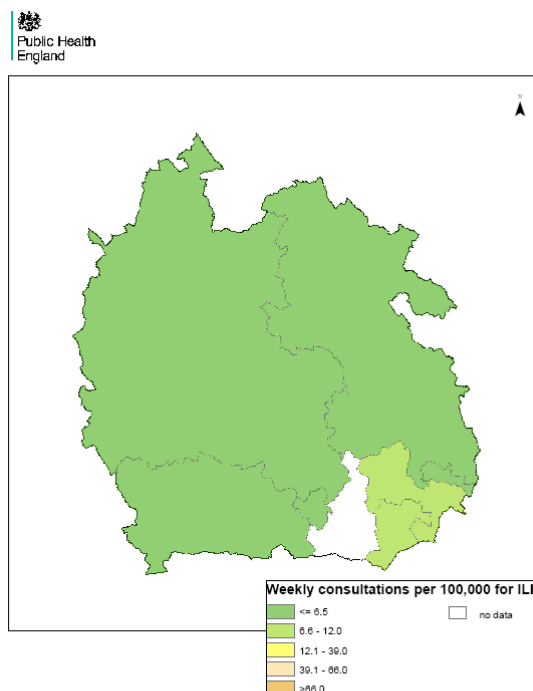
### Week 42



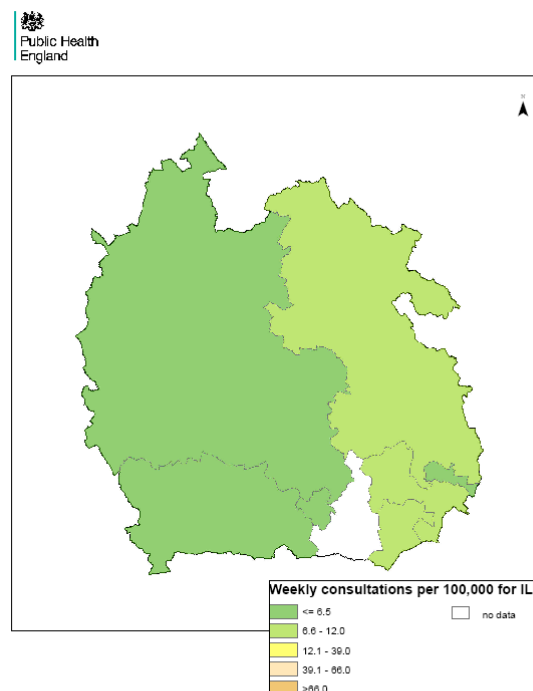
## Thames Valley

Weekly ILI consultation rate by LA for Thames Valley PHE Centre

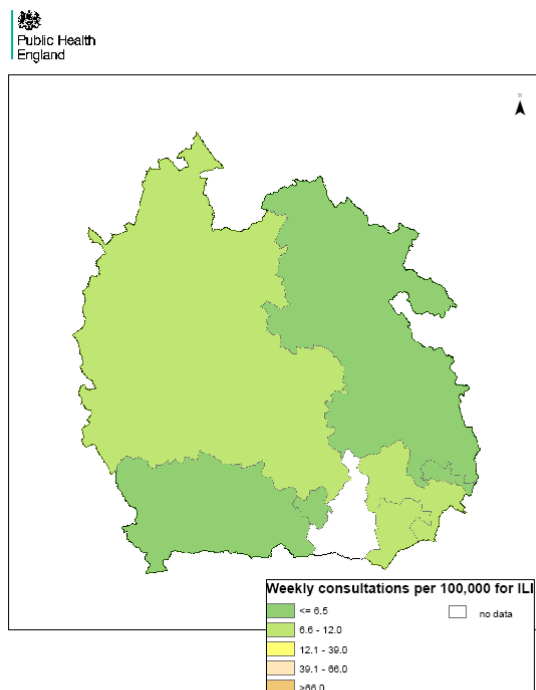
**Week 39**



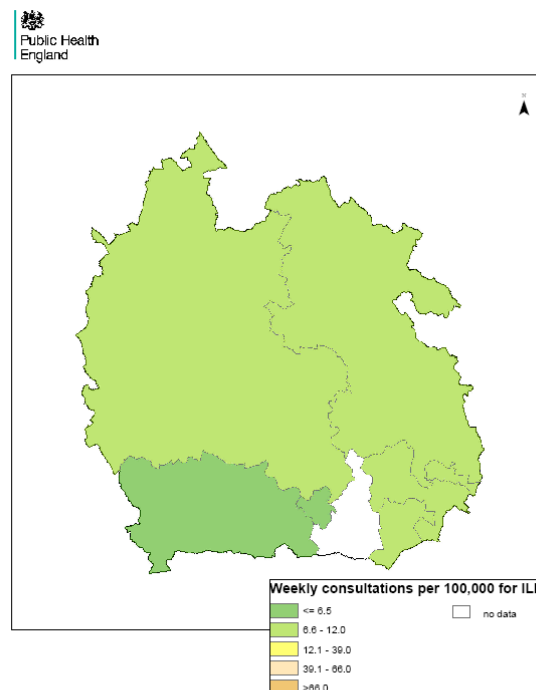
**Week 40**



**Week 41**



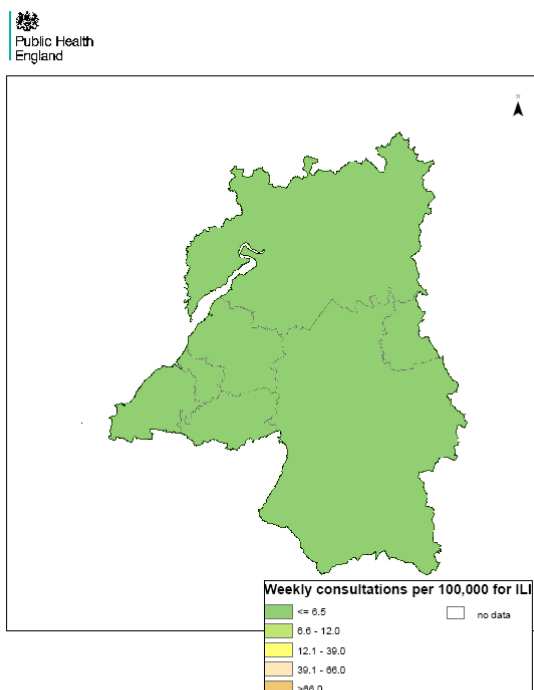
**Week 42**



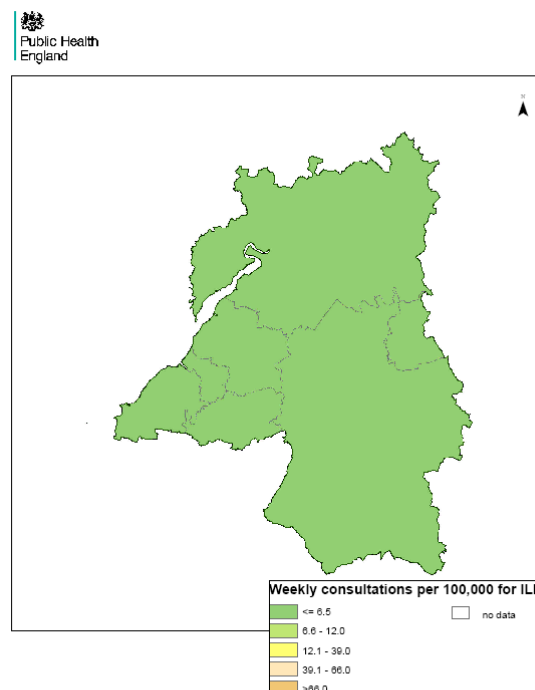
## Avon, Gloucestershire & Wiltshire

Weekly ILI  
consultation  
rate by LA  
for Avon,  
Gloucestershire  
& Wiltshire  
PHE Centre

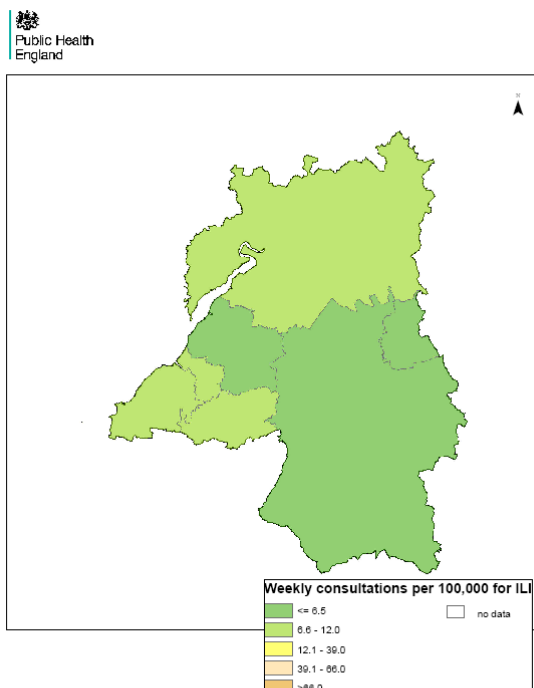
Week 39



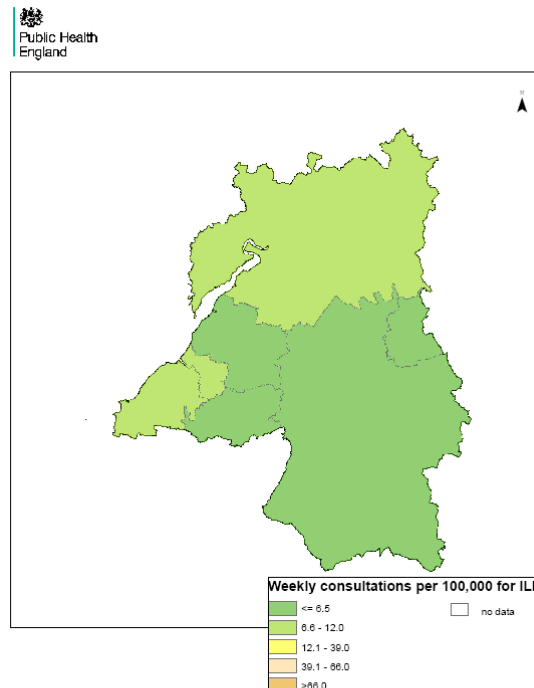
Week 40



Week 41



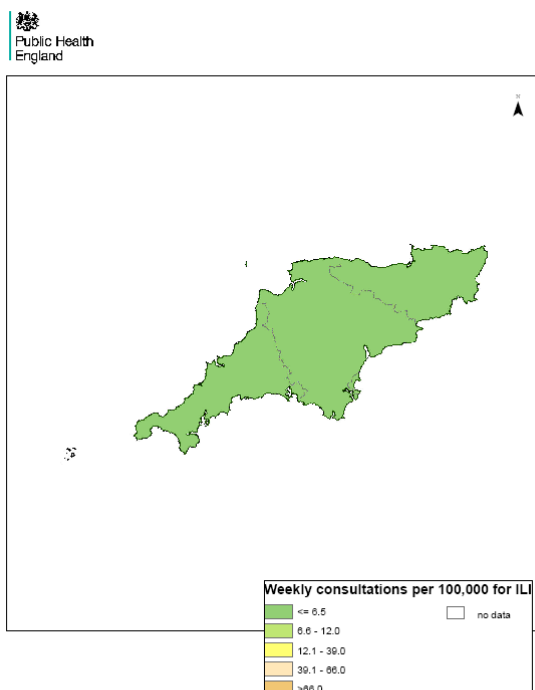
Week 42



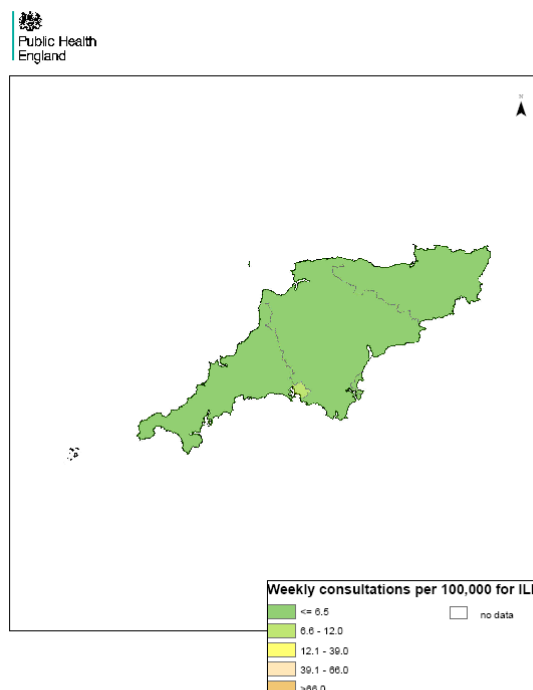
**Devon,  
Cornwall &  
Somerset**

Weekly ILI  
consultation  
rate by LA  
for Devon,  
Cornwall &  
Somerset  
PHE Centre

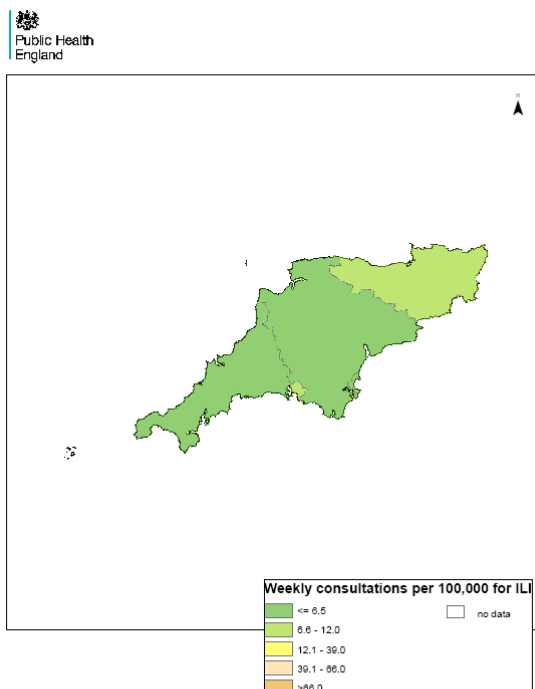
**Week 39**



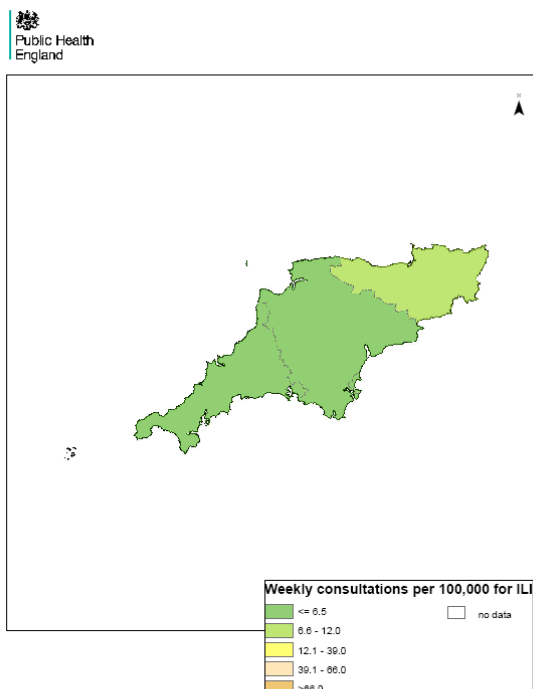
**Week 40**



**Week 41**



**Week 42**

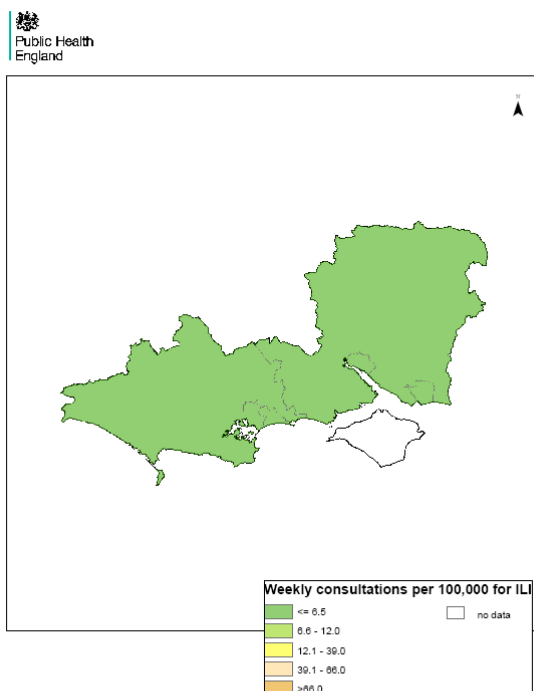




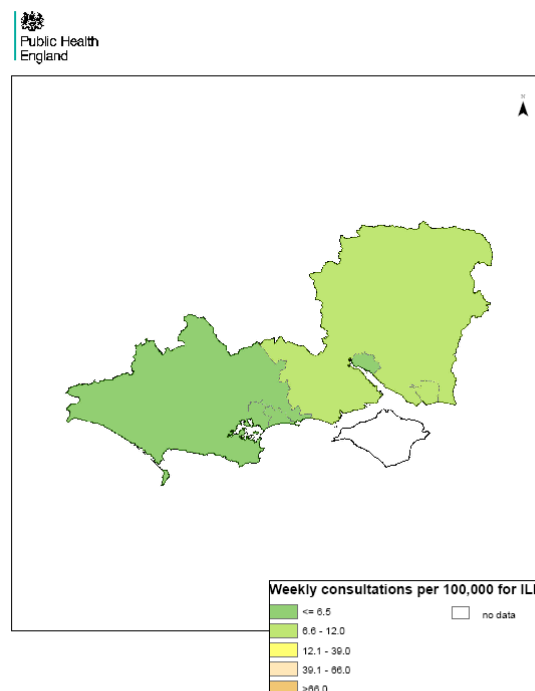
## Wessex

Weekly ILI  
consultation  
rate by LA  
for Wessex  
PHE Centre

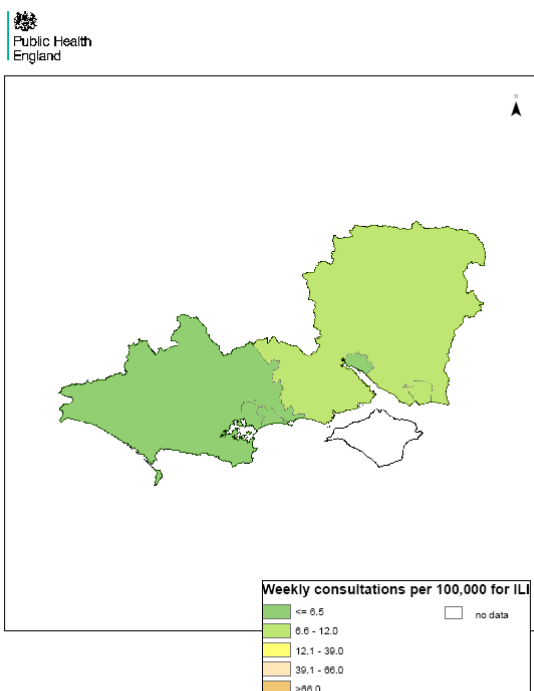
### Week 39



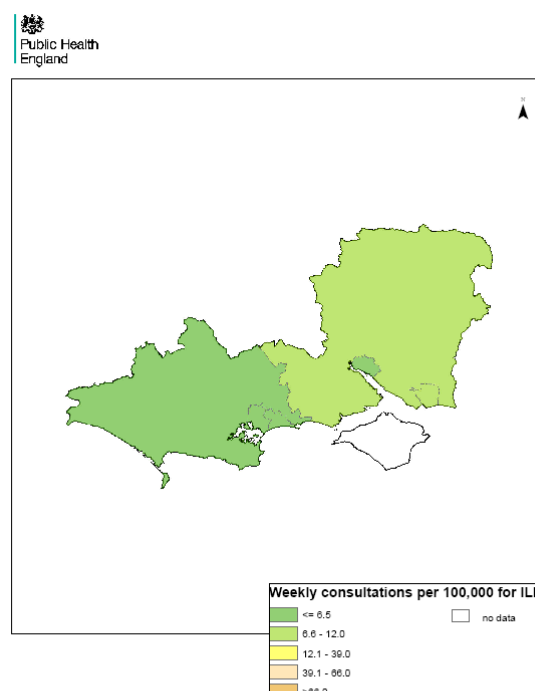
### Week 40



### Week 41



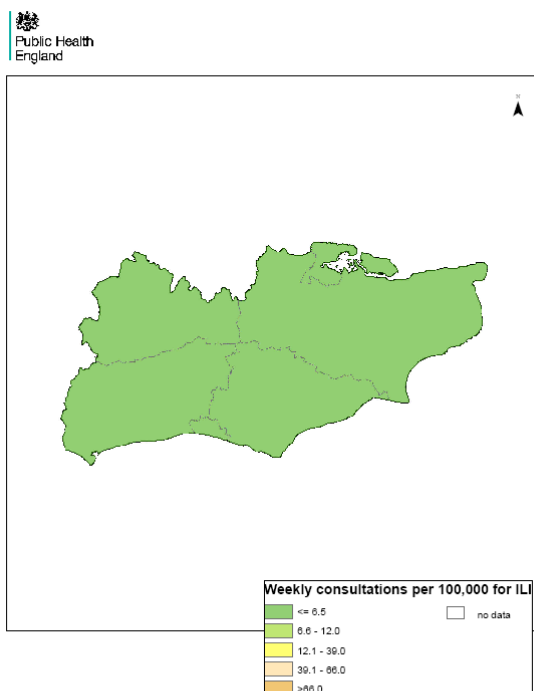
### Week 42



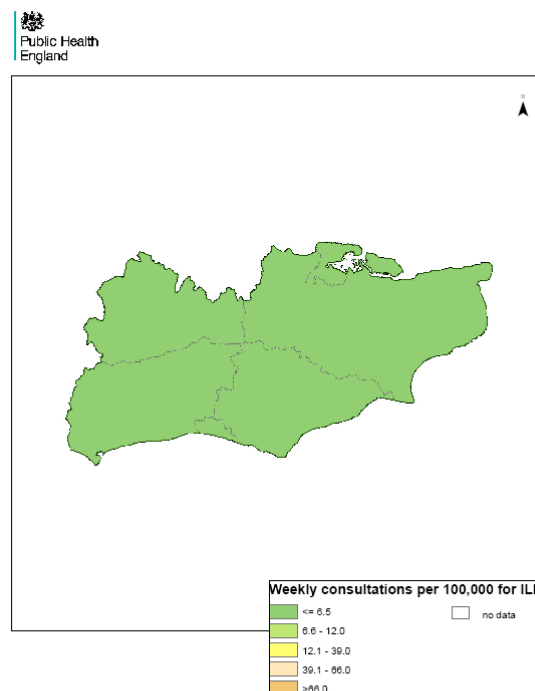
## Kent, Surrey & Sussex

Weekly ILI consultation rate by LA for Kent, Surrey & Sussex PHE Centre

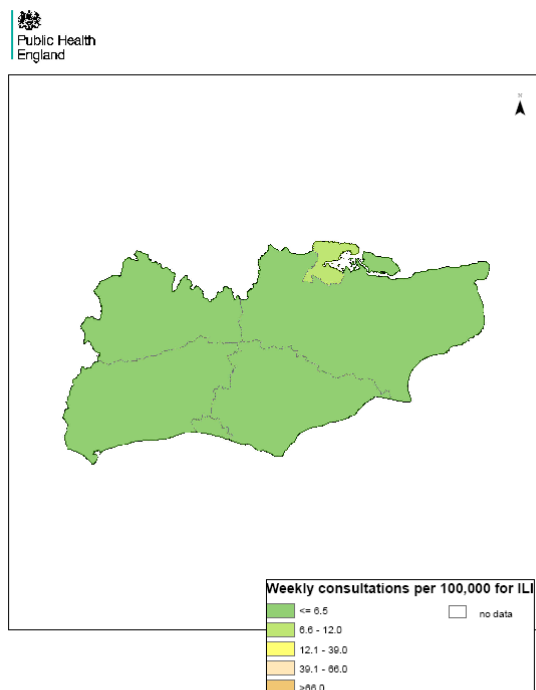
### Week 39



### Week 40



### Week 41



### Week 42

