

Beginning with SubclipseSVN

*A user guide to begin using the
Subclipse for source code management
on the CropForge collaborative
software development site.*

IRRI

Copyright International Rice Research Institute 2007

<http://www.irri.org>



Licensed under Creative Commons Attribution-NonCommercial-ShareAlike 3.0
For full licensing information see: <http://creativecommons.org/licenses/by-nc-sa/3.0/>

This work was funded by the Generation Challenge Programme
<http://www.generationcp.org>

CONTENTS

1. Introduction	3
2. Getting Help	3
3. Using Subclipse	4
4. Creating the Repository Location.....	4
4.1. Opening the Repository View	4
4.2. Adding the SVN Repository Location	5
5. Sharing your Eclipse Project.....	7
6. Checking out Project Contents.....	8
7. Resources.....	10

1. Introduction

Subversion (or **SVN** in reference to its command line name) is an open source application used for revision control. It is a modern replacement for the Concurrent Versioning System (**CVS**) which enables developers to work concurrently.

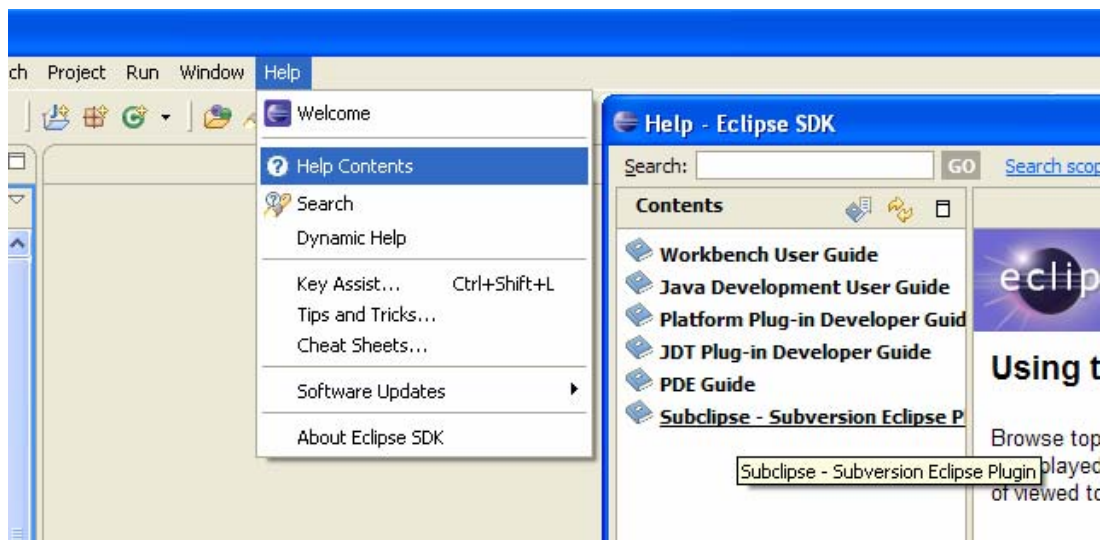
This manual describes the steps needed to create an initial local copy of the source code from a SVN repository located on the CropForge server. The client software used is Subclipse - a SVN plugin for Eclipse. Subclipse provides a user interface to Subversion from within the Eclipse IDE

It is assumed that the Subclipse is already installed as a plugin of Eclipse in the user's client machine and he/she has an existing account on CropForge. Also, the user must be a developer in the project from which the source code will be downloaded. Refer to [CodeOnCropForge.pdf](#) for details on how to do these steps.

2. Getting Help

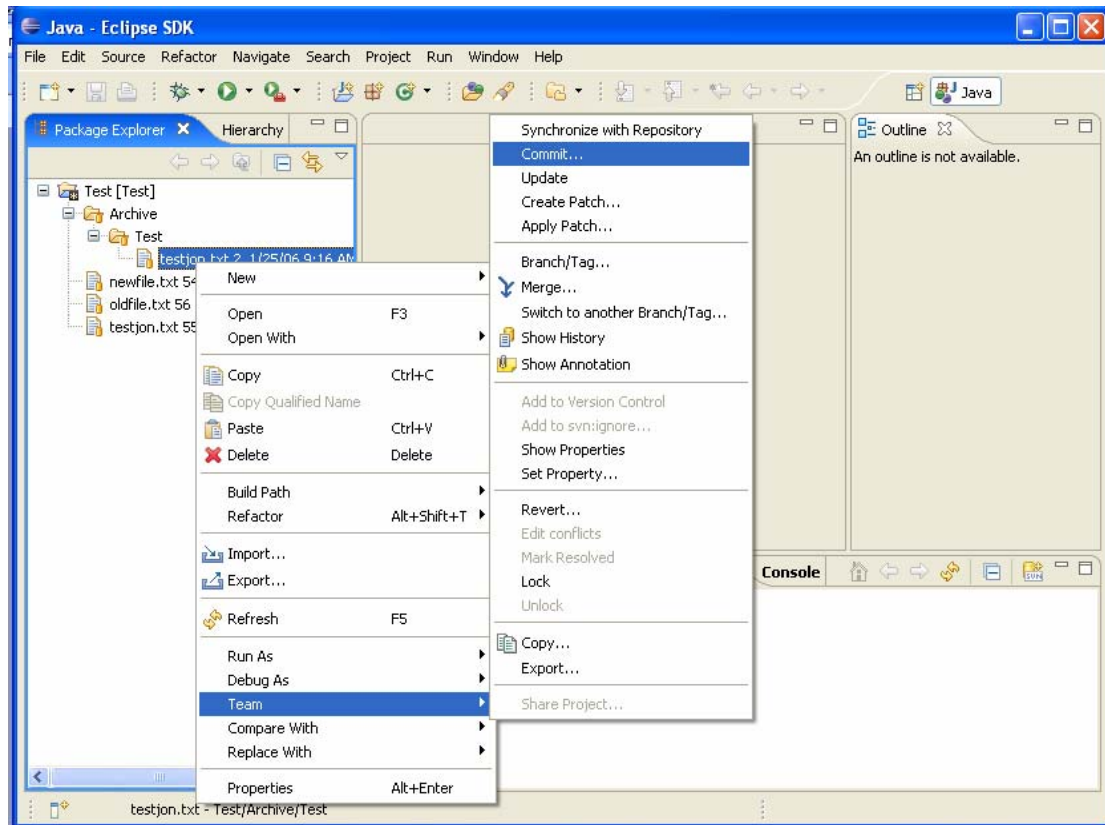
To get help for using any of the Subversion commands using Subclipse:

1. From the main menu: **Help > Help Contents**
2. Select **Subclipse - Subversion Eclipse Plugin**



3. Using Subclipse

Upon installation of Subclipse, you will find additional new options in the **Team** context menu. All the actions that can be performed using Subclipse will be available at the right click!



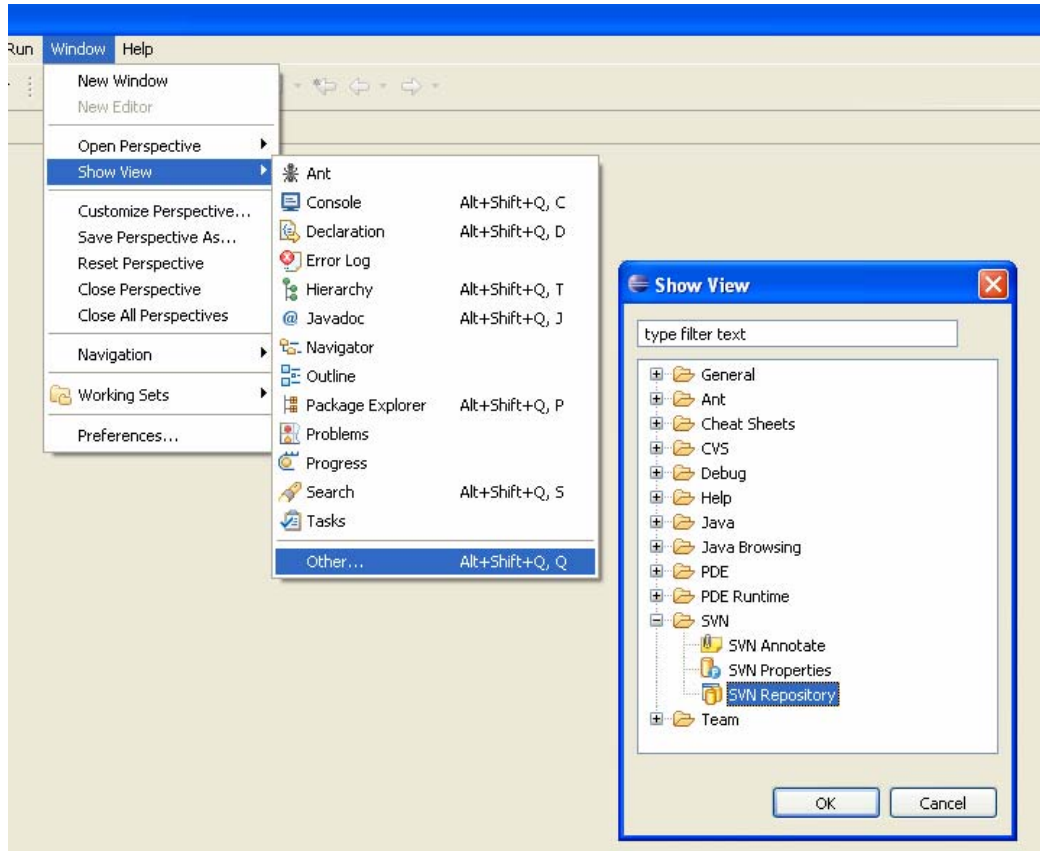
To use Subclipse, or any other subversion client, we first need a local copy of the repository contents. It is also known as the 'Working copy', where all modifications are made and send the changes to the repository a.k.a. "commit". So the first step is to create a repository location within Eclipse so that we can "checkout" the code.

4. Creating the Repository Location

Before you can use Subclipse to interact with your Subversion repository, you have to tell Subclipse where your repository is. To do this, you need to open the **SVN Repository** view.

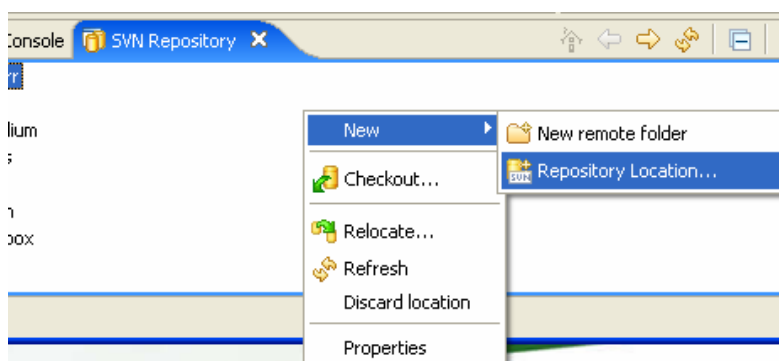
4.1. Opening the Repository View

1. From the main menu: **Window > Show View > Other...**
2. From the **Show View** dialog: **SVN > SVN Repository**

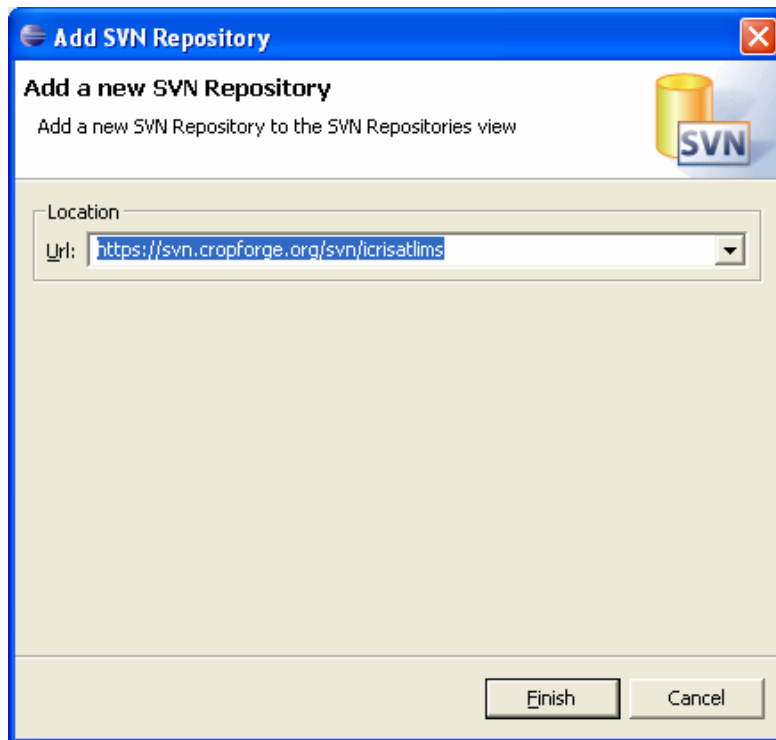


4.2. Adding the SVN Repository Location

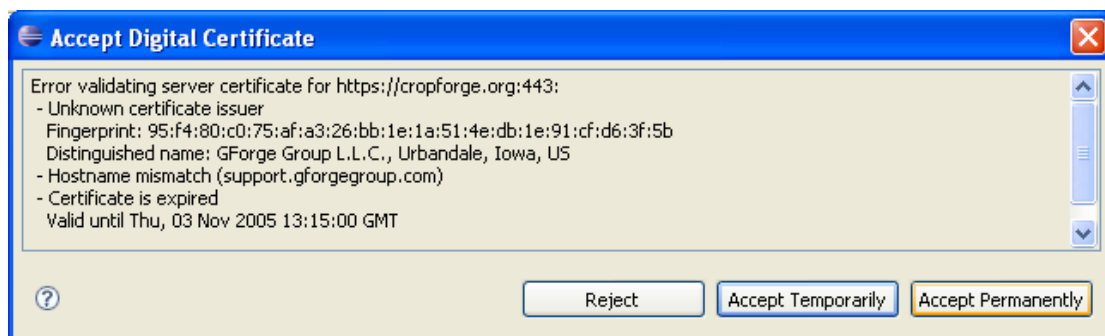
1. From the **SVN Repository** view, right-click the **SVN Repository** view:
New > Repository Location...



2. Put the root URL, or any path within the repository, into the URL combo box on the **Add SVN Repository** dialog
3. Click **Finish** to finish the addition of the repository location.



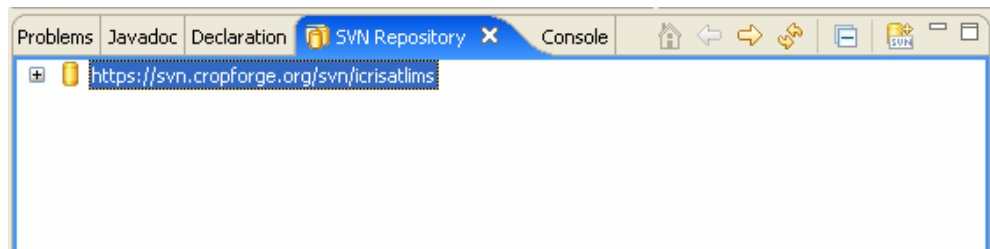
In the event that a dialog pops up asking you to accept a certificate, please accept permanently.



You should also be prompted for a username and password. Check the "Save Password" to avoid being prompted again later.



Once the repository has been successfully created, you should have something similar to this:

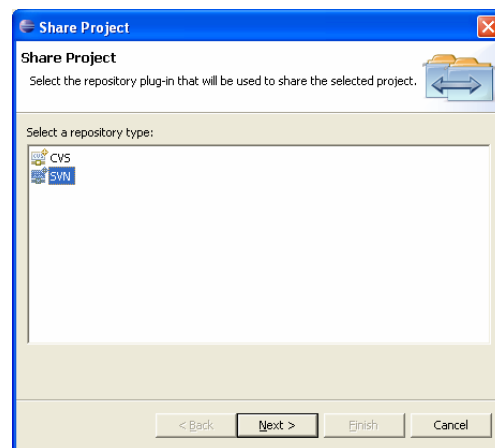
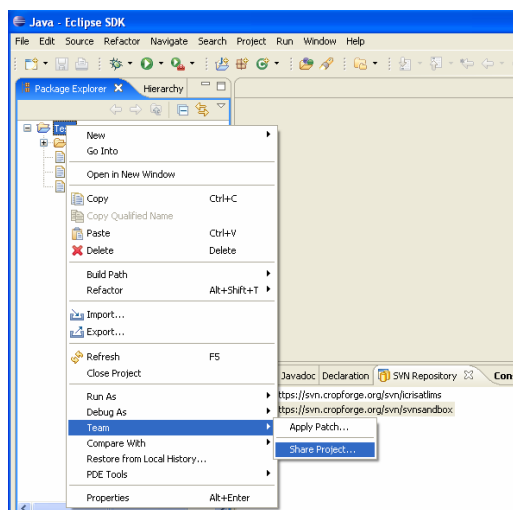


We are now ready to access the SVN Repository to either share our project (initial “checkin”) or checkout a project's contents.

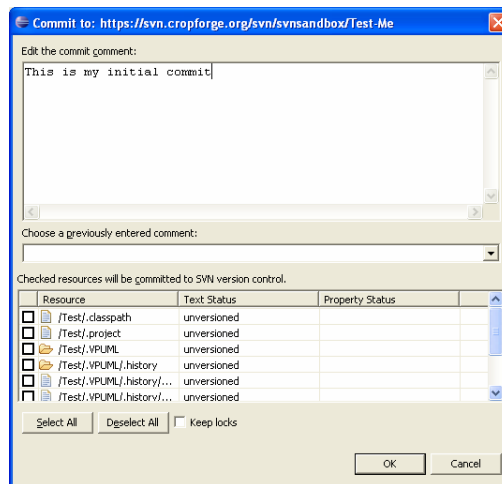
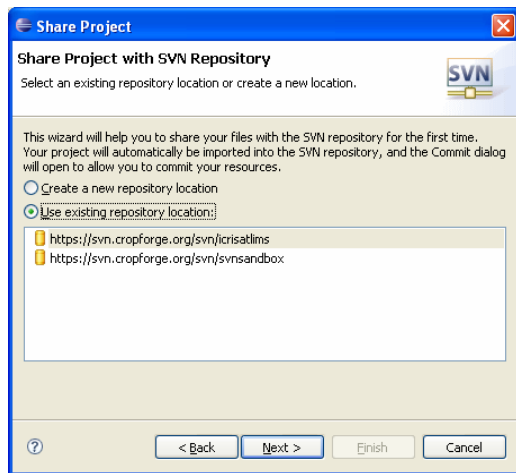
5. Sharing your Eclipse Project

If you have an existing Eclipse project that you want to put or “checkin” to the SVN Repository, follow these steps:

1. From the **Package Explorer**, navigate to your project
2. Right click it, go to **Team > Share project...**
3. Select the repository type > **SVN**, then click **Next**

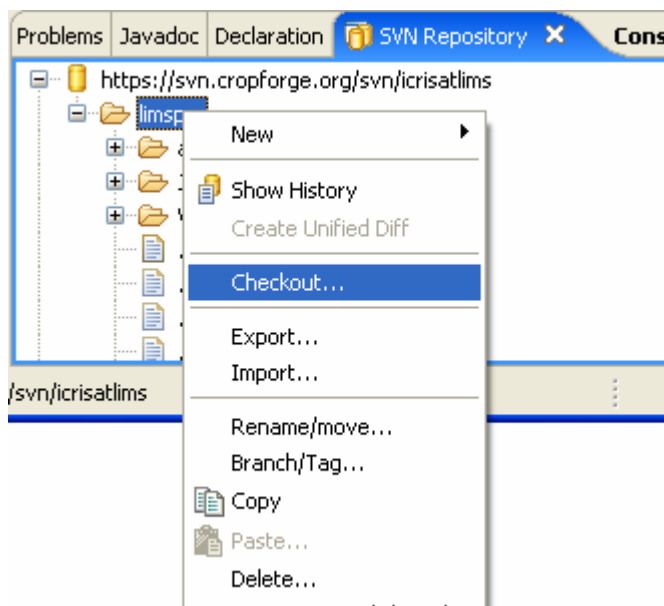


4. Choose an existing repository location, then click **Finish**
5. A window will appear where you can put meaningful comment of your commit. Click **Ok** to finish.

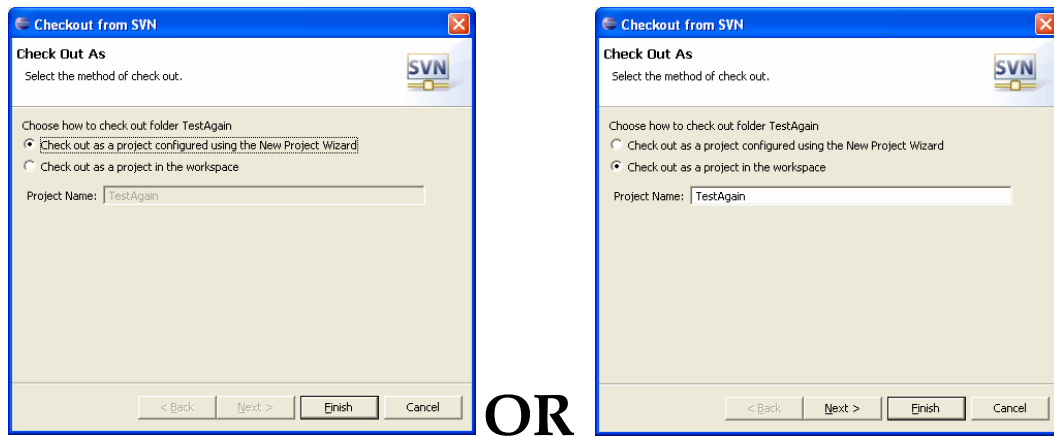


6. Checking out Project Contents

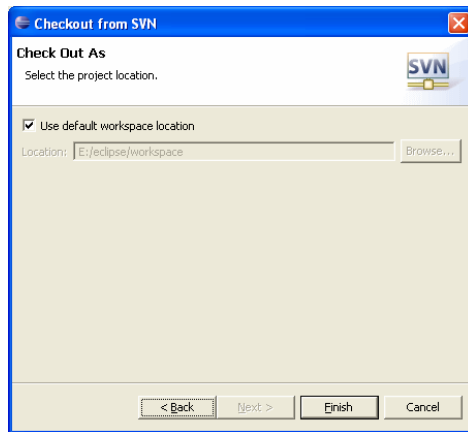
1. Expand your newly created repository location by double clicking it to reveal the directory you want to checkout
2. Right-click the directory you would like to checkout: **Checkout...**



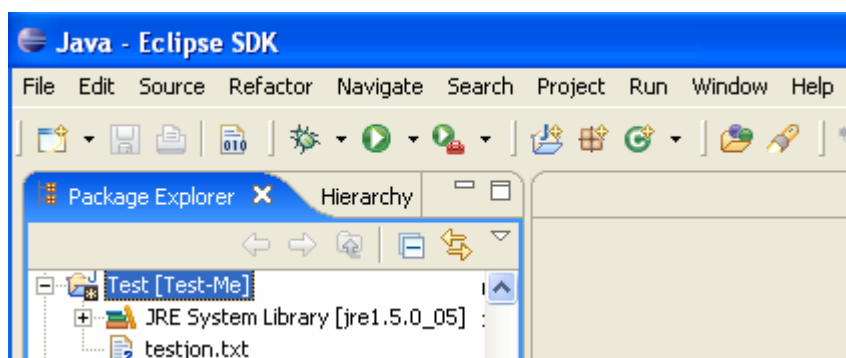
3. The **Checkout from SVN** dialog will appear:
 - Use the **New Project** wizard **OR**
 - Create a **Simple** project



4. Then select the Workspace Location or just use the default, and click **Finish**



Your Navigator should look similar to this:



7. Resources

- CropForge server: <http://cropforge.org>
- How to install and use Subclipse:
<https://www.projects.dev2dev.bea.com/Subversion%20Clients/Subclipse.html>