

The Big Picture: Trends In Protective Behaviour Among Young Women

John Cleland

Background

- Heavy condom promotion for HIV control for past 10 years
- Increasing emphasis on abstinence since launch of PEPFAR
- Little contact, collaboration, synergy between HIV prevention and family planning
- No agreement on relative importance of A,B,C, in stemming HIV epidemic (e.g. Uganda)

DHS Data Used In This Presentation

- Have you ever had sex? OR
At what age did you first have sex
- How long ago did you last have sex?
- FOR SEXUALLY ACTIVE – Are you currently using any method of contraceptive? IF YES what method? Where did you obtain it?
- When you last had sex did you or your partner use a condom?

Figure 3: Box and Whisker Plots: Trend (1993-2001) in current contraceptive use among single women aged 15-24 who were sexually active in the last 3 months: 18 African countries

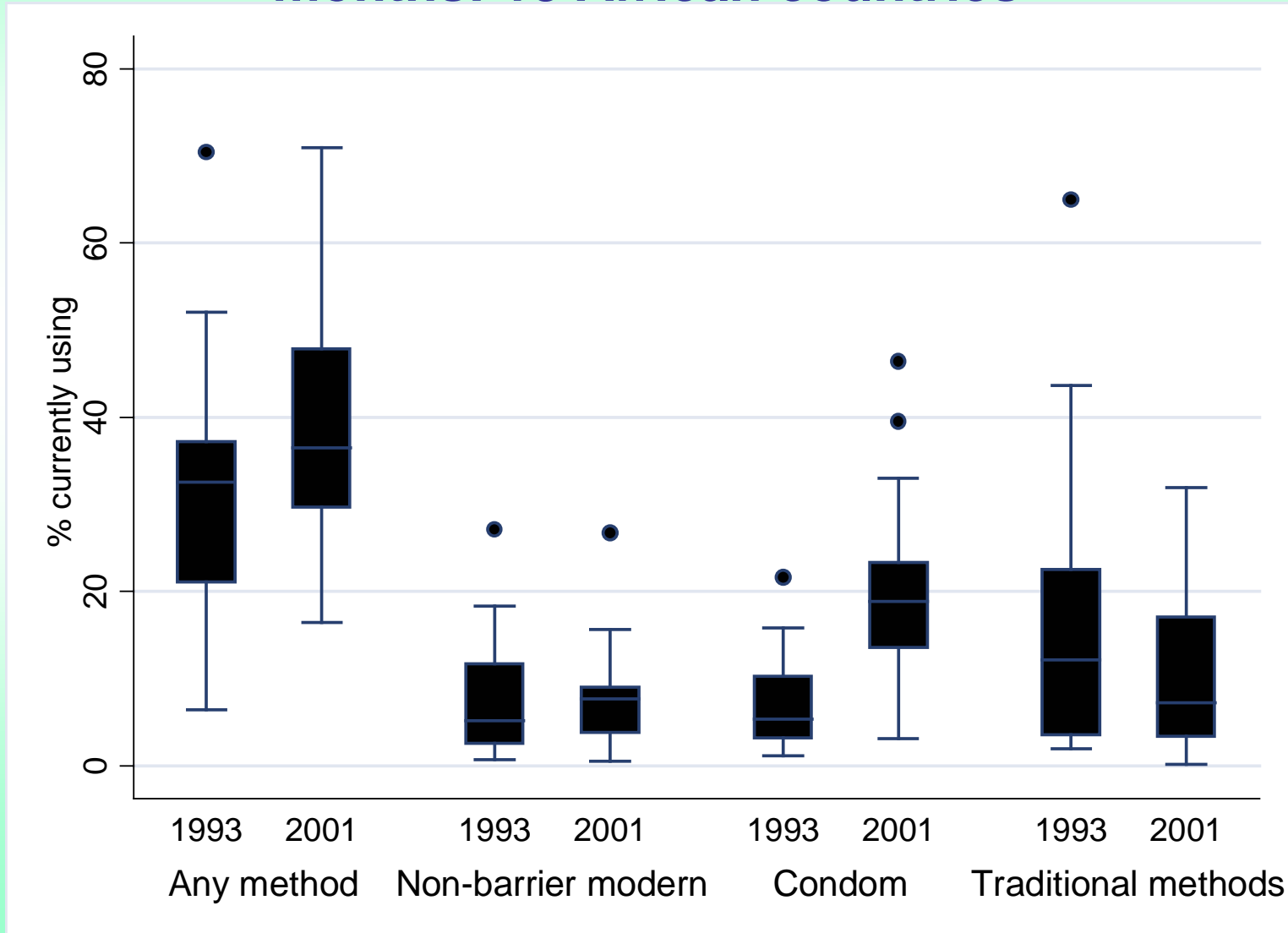


Figure 4: Box and Whisker Plots: Trends in standardized percent who reported condom use at most recent coitus, among single women aged 15-24 who were sexually active in the last 3 months: 13 African countries.

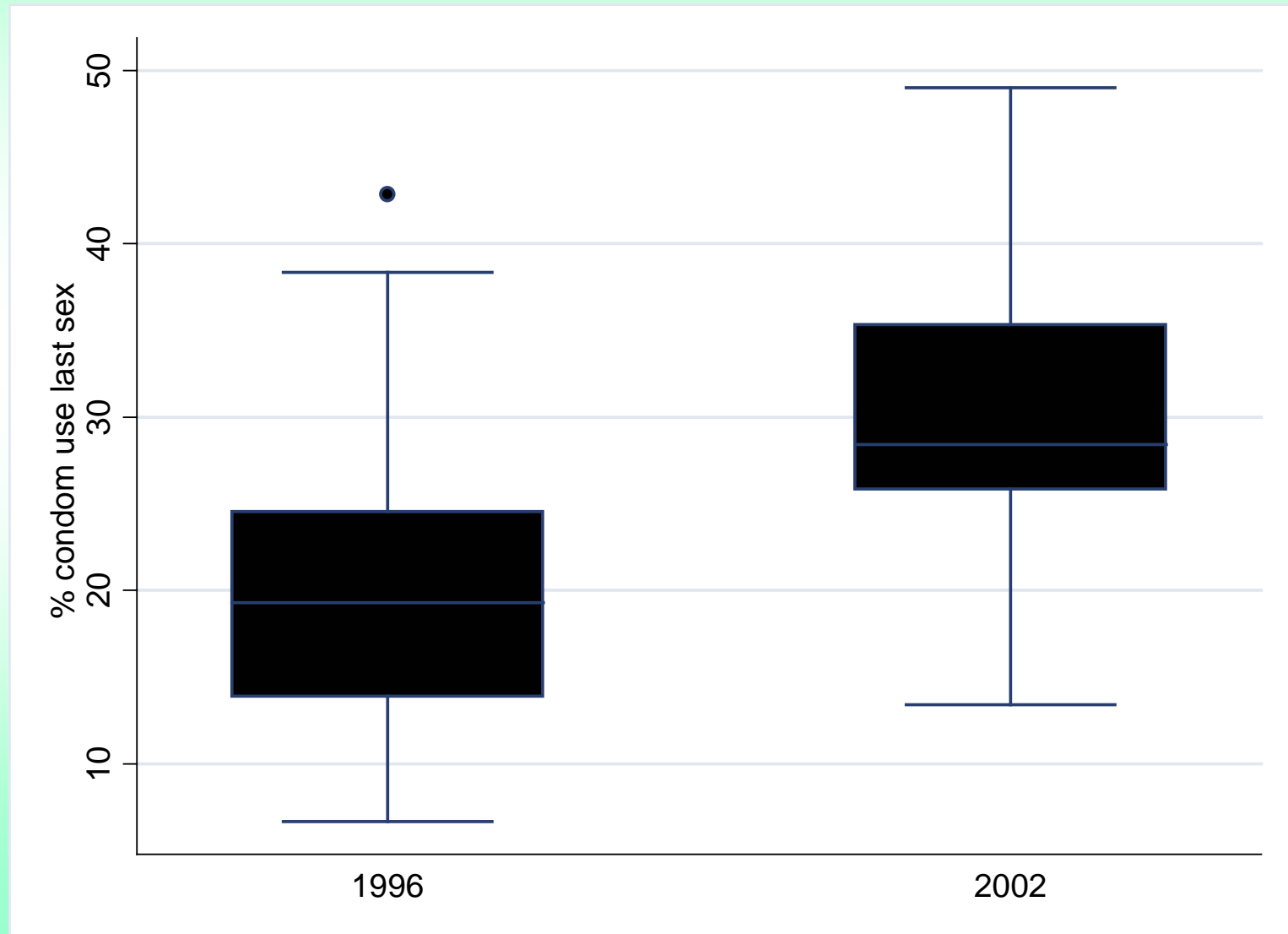


Figure 3b: Trends in condom use at last sex, by residence

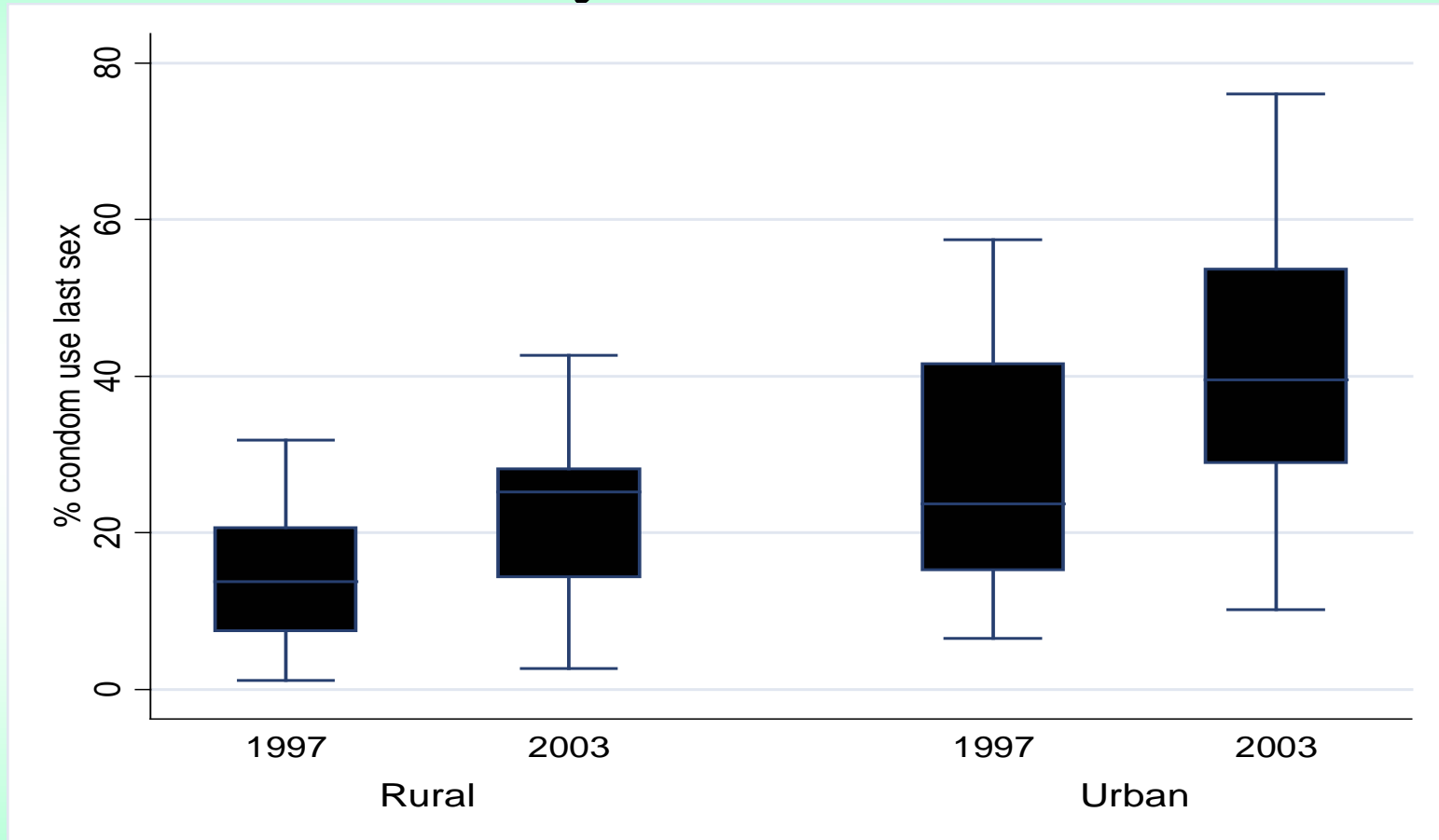


Figure 3c: Trends in condom use at last sex, by Level of education

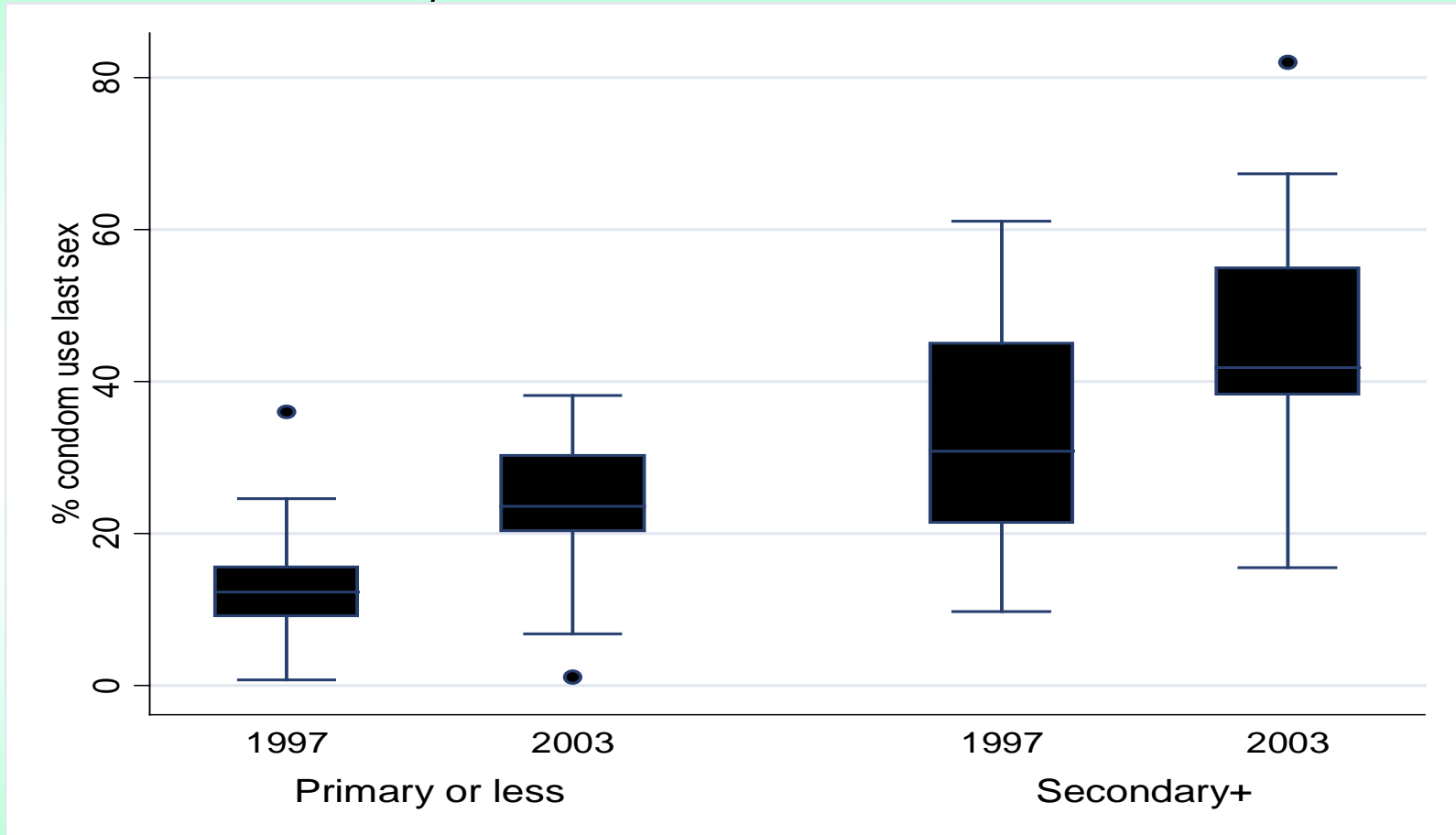
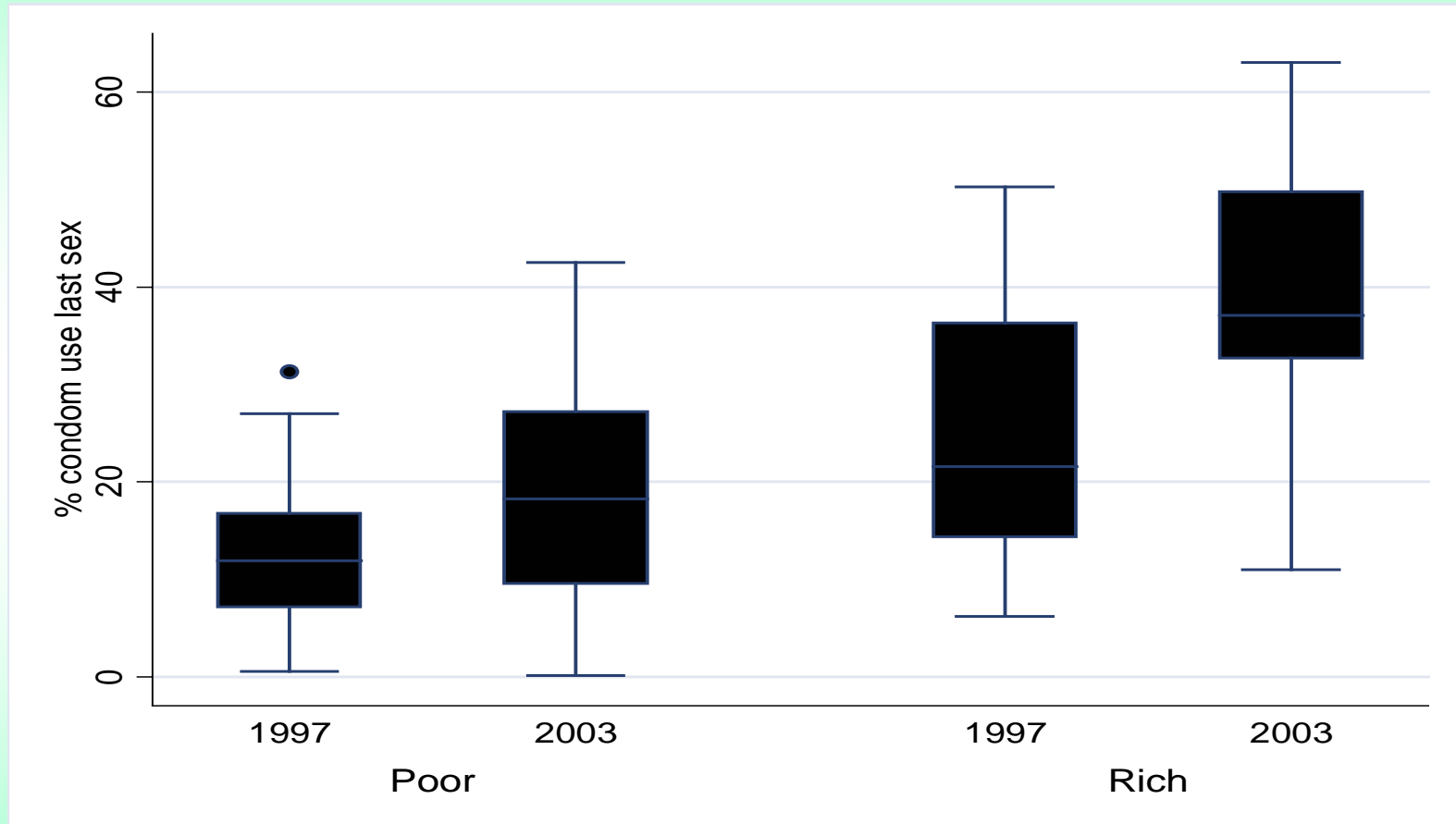


Figure 3d: Trends in condom use at last sex, by wealth category



Annual change in contraceptive knowledge & use

	Median	95%CI
Effective knowledge	1.16	-(0.45 2.09)
Ever use of any method	0.27	-(0.50 1.45)
Current use		
Any method	0.11	-(0.33 1.19)
Condom	1.44	(0.66 2.04)
Non-barrier modern	0.01	-(0.23 0.43)
Traditional methods	-0.82	-(1.33 -0.25)

Annual change in condom use last act

	Median	95%CI
Over all	1.70	(0.55 2.47)
Place of residence		
<i>Rural</i>	1.29	-(0.56 2.29)
<i>Urban</i>	2.09	(0.57 3.88)
Education level		
<i>Primary or less</i>	1.59	(1.04 2.67)
<i>Secondary+</i>	1.99	(1.39 4.28)
Wealth category		
<i>Poor</i>	0.95	-(0.70 2.36)
<i>Rich</i>	2.64	(0.54 3.31)
Age group		
<i>15-19 years</i>	1.38	(0.64 2.76)
<i>20-24 years</i>	1.94	(0.98 3.01)

Dual & consistent use of condom

- Dual use:
 - Current condom users for pregnancy prevention among women who reported condom use last coitus
- Consistent use
 - condom use last sexual act among current condom users for pregnancy prevention

Median percentages of dual use and consistent use in most recent survey

	Dual use			Consistent use		
	Median	95% CI		Median	95% CI	
Over all	58.5	(47.9	72.4)	81.3	(77.8	94.8)
Place of residence						
<i>Rural</i>	54.7	(42.1	70.6)	93.2	(71.7	97.9)
<i>Urban</i>	58.9	(50.3	72.5)	81.3	(75.8	91.2)
Education level						
<i>Primary or less</i>	56.1	(39.2	70.1)	86.7	(76.3	94.9)
<i>Secondary+</i>	58.7	(50.8	73.8)	82.8	(79.1	94.4)
Wealth category						
<i>Poor</i>	49.6	(37.1	65.5)	91.5	(71.4	98.4)
<i>Rich</i>	61.8	(45.3	72.9)	82.2	(76.1	93.9)
Age group						
<i>15-19 years</i>	63.7	(41.1	73.7)	81.0	(75.6	94.2)
<i>20-24 years</i>	54.0	(47.7	73.3)	85.6	(79.8	95.7)

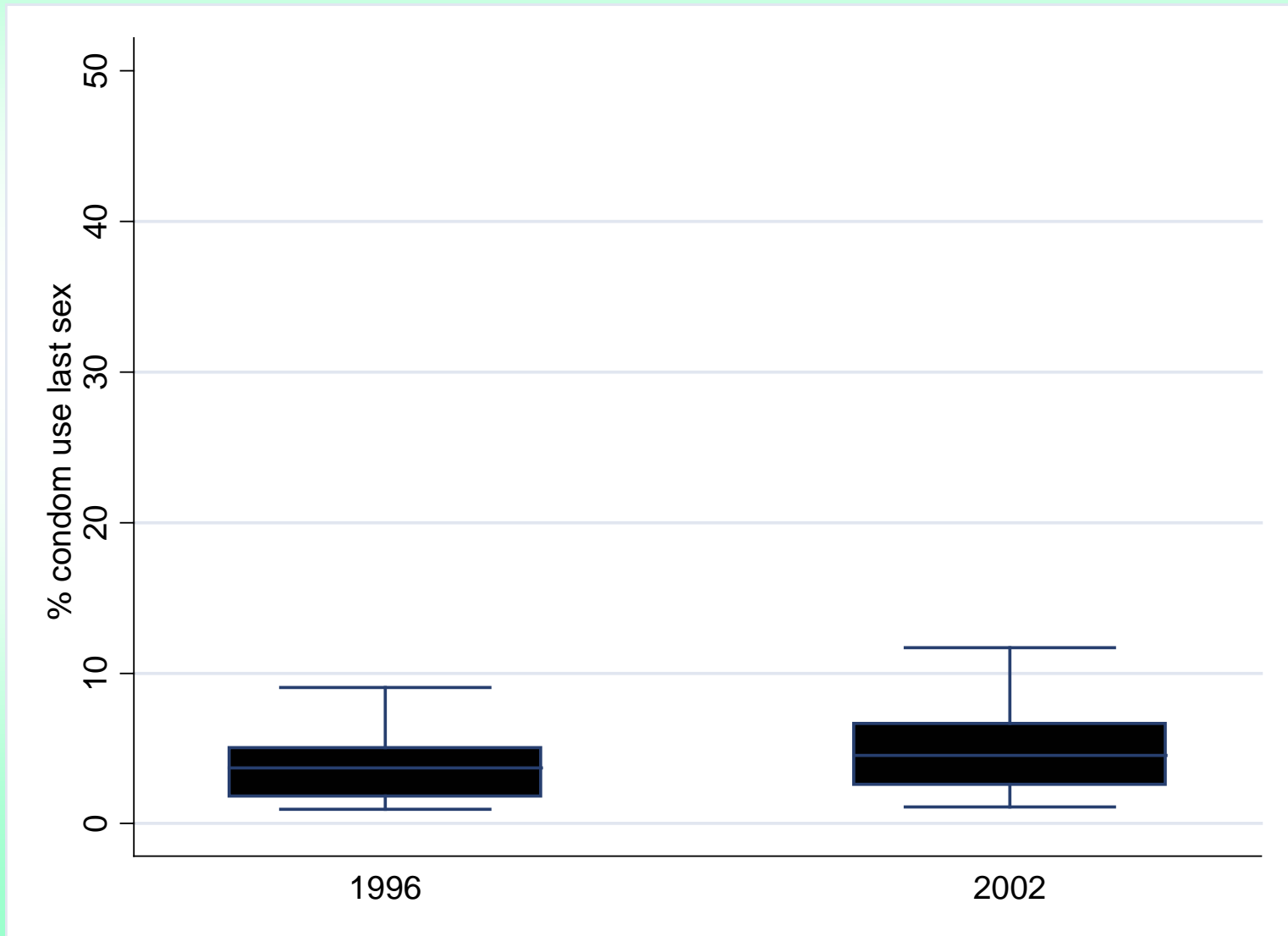
Conclusions: single women (1)

- Contraceptive use
 - Condoms now are the most popular method among single young women
 - No signs of increase of non-barrier methods
 - Most young people buy condoms from commercial outlets
 - Social marketing companies are the unsung HEROES

Conclusions: single women (2)

- Condom use last act
 - Median 18.5% in 1997 to 31.2% in 2003 (Annual increase 1.7%)
 - Compare with contraceptive prevalence rate in developing countries increased from 10% in 1965 to 60% in 1998 (annual rate 1.5%)
 - Greater impact in urban than rural areas and in richer than poorer groups
 - Is there a cost barrier for the poor?- an urgent future research priority

Figure 4a: Married women aged 15-24 who were sexually active in the last 3 months: 13 African countries: trends in condom use at last sex.



Is condom use within marriage a realistic proposition: results from WHO multi-site study (married or cohabiting women)

Condom use	Urban	Rural
South Africa		
Current use for FP	8.7	5.2
Consistent/occasional use with partner (any reason)	31.3	11.1
Kenya		
Current use for FP	2.2	1.7
Consistent/occasional use with partner (any reason)	14.5	11.6
Uganda		
Current use for FP	5.6	3.1
Consistent/occasional use with partner (any reason)	21.8	11.0

Profile of Condom Use and Related Attitudinal Factors in Three Strata (South Africa)

Factors	Strata		
	Urban More Educated	Intermediate	Rural Less Educated
Consistent/Occasional condom use			
Wife	33.9	17.6	10.9*
Husband	29.3	15.7	7.8*
Discussed condoms with spouse			
Wife	79.7	54.9	28.1*
Husband	75.9	40.0	30.5*
Favourable attitude to condoms			
Wife	57.6	62.5	35.2*
Husband	33.9	30.0	27.0
Belief in condom efficacy			
Wife	89.7	86.3	76.0*
Husband	91.5	92.2	86.6

Profile of Condom Use and Related Attitudinal Factors in Three Strata (South Africa) **Cont'd**

Factors	Strata		
	Urban More Educated	Intermediate	Rural Less Educated
Perceived risk of HIV from Spouse			
Wife's report	55.9	54.9	58.3
Husband's report	10.3	28.0	25.0*
High perceived self-efficacy			
Wife	37.9	23.5	22.2*
Husband	37.3	31.4	31.3
Number of couples (unweighted)	94	52	92

*Strata difference significant at 95% confidence level

Predictors of Condom Use Reported by Wives (South Africa)

	Unadjusted ORs	Adjusted ORs
Urban v rural	3.17	2.26
Wife secondary + sch. V less	4.42	2.47
Husband secondary + sch. V less	3.81	2.24
Wife's high/medium perceived risk of HIV v. low/no risk	4.17	3.92
Wife's high belief in condom efficacy v low	5.53	4.55
husband's positive attitude to condoms v negative	4.29	1.56

Also in the model: marital status, length of relationship: fertility intentions

Significant effects in red

Dual-protection from condoms or double-method protection?

South Africa (high contraceptive use setting)

Use status	Needs FP & HIV protection	Needs HIV-protection only	Needs FP only	No need
	%	%	%	%
No method	13	24	16	49
Non-barrier method only	60	35	71	44
Condom only	4	8	2	2
Both	23	32	12	5
(N)	(75)	(74)	(61)	(57)

Kenya (moderate contraceptive use setting)

Use status	Needs FP & HIV protection	Needs HIV- protection only	Needs FP only	No need
Use status	%	%	%	%
No method	22	26	21	39
Non-barrier method only	69	50	68	51
Condom only	0	2	2	2
Both	9	23	9	8
(N)	(58)	(93)	(167)	(197)

Uganda (low contraceptive use setting)

Use status	Needs FP & HIV protection	Needs HIV- protection only	Needs FP only	No need
Use status	%	%	%	%
No method	53	64	68	69
Non-barrier method only	35	18	22	15
Condom only	8	14	5	8
Both	4	4	5	8
(N)	(156)	(225)	(41)	(88)

Conclusions: married women

- Consistent Condom use still very low
- Occasional use much more common
- In high contraceptive countries condoms typically used together with hormonal methods
- In low prevalence countries condoms more likely to be used alone
- Women are not as powerless to negotiate use as often portrayed
- Obstacles to use not insurmountable