

MODULE 9

RURAL ROAD INVENTORY

Objectives

After fulfilling Module 9, you will be able to:

- Understand contents of a rural road inventory.
- Know all steps to set up a road inventory.
- Self-Assessment.

Requirement

The participants are required to have comprehended following modules

- Module 1: "*Rural Road Network*"
- Module 4: "*Rural Road Defects and Causes*"

Methodology

- The participants are introduced contents of a road inventory and steps to set up a road inventory.
- The participants set up a road inventory document based on the data (combination of the local conditions and the assumed data given by trainers)
- Self-Assessment

Training Kit

- Rural Road Maintenance Handbook
- Module 9 "*Rural Road Maintenance*"

Studying Activities

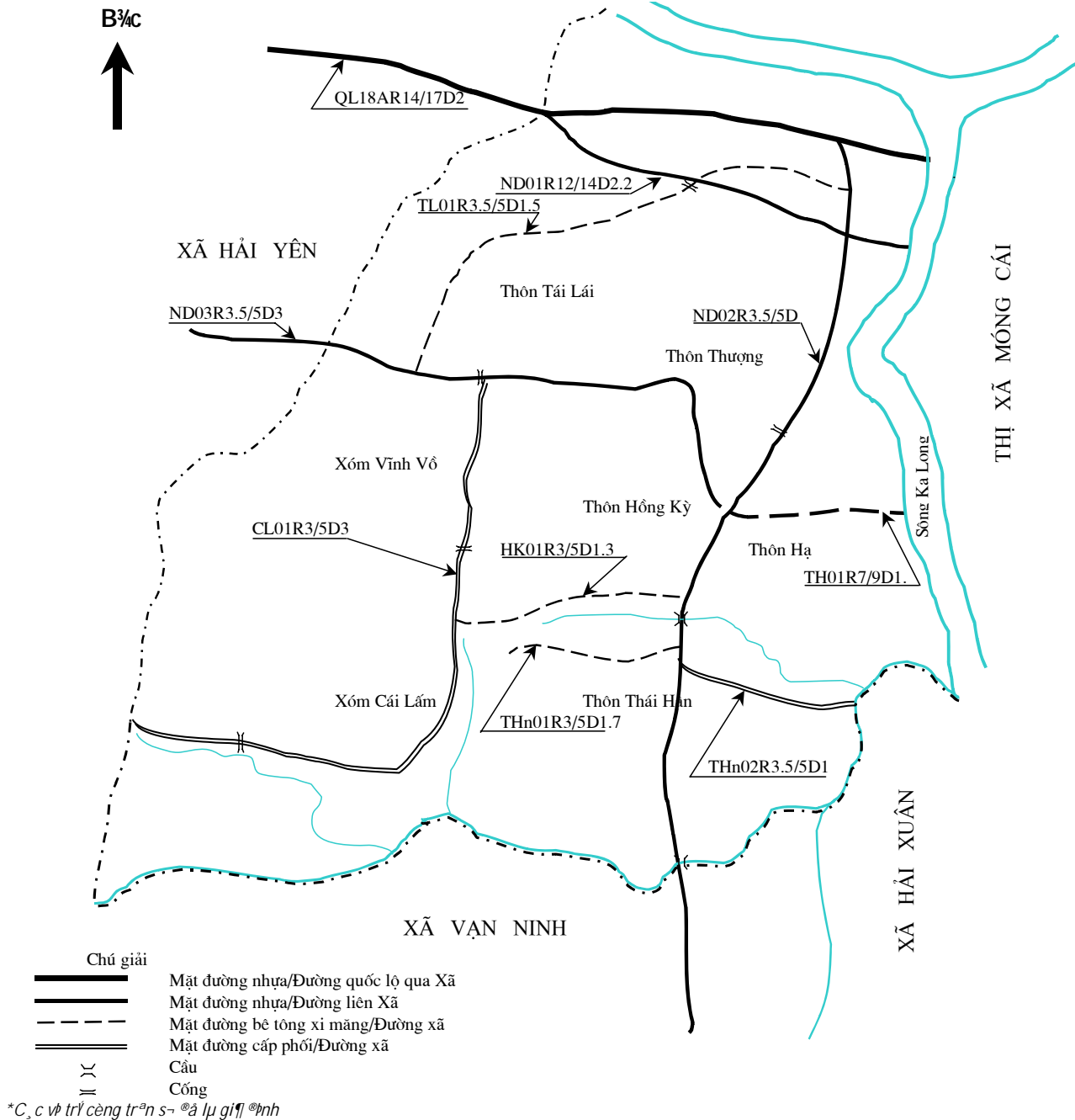
1. Learn about documents of commune road inventory
2. Learn how to make a document of commune road inventory
3. Practice establishing a road inventory of your Commune
4. Self - assessment

1. Learn about a Commune Road Inventory



Refer to the road network in Ninh Duong ward of Mong Cai town, Quang Ninh province

MANG LƯỚI ĐƯỜNG PHƯỜNG NINH DƯƠNG - THỊ XÃ MÓNG CÁI - QUẢNG NINH



Read *bridge and road inventory* of Ninh Duong ward (data from Commune Transport Staff - ..xxxx.. ; assumed data - ..xxx..)

ROAD INVENTORY FORM

No.	Road Code	Name of road	Length of road (km)	Pavement	Width of road (m)	Number of bridges & culverts span < 6m
1	ND01R12/14D2.2	Hoa Binh Road	2.2	Concrete	12	5
2	ND02R3.5/5D3.0	Tue Tinh Road	3.0	Bituminous	3.5	9
3	ND03R3.5/5D3.0	Ninh Duong – Quat Dong Road	3.6	Bituminous	3.5	8
4	TL01R3.5/5D1.5	Nghia Trang- Cai Lam Road	1.5	Concrete	3.5	5
5	TH01R7/9D1.2	Road to ferry	1.2	Concrete	7.0	2
6	CL01R3/5D3.0	Hong Ky-Cai Lam Road	3.0	Gravel	3.5	20
7	HK01R3/5D1.3	Hong Ky Commune people committee Road	1.3	Concrete	3.0	6
8	THn01R3/5D1.7	Road to church	1.7	Concrete	3.0	9
9	THn02R3.5/5D1.1	Thai Han Road	1.1	Gravel	3.5	5

BRIDGE INVENTORY FORM

Road Code	Name of road	Location of Bridge	Date of construction	Constructed by	Types of structure
ND01R12/14D2.2	Hoa Binh Road	Km0 + 508	5/2003	Transport Engineering Company No.3	Reinforced concrete beam
ND02R3.5/5D3.0	Tue Tinh Road	Km1 + 563	3/1999	Thanh An Company	Steel beam-concrete plate
ND03R3.5/5D3.0	Ninh Duong-Quat Dong Road	Km2 + 240	12/1998	Thanh An Company	Steel beam-concrete surface

<i>TL01R3.5/5D1.5</i>	<i>Nghia Trang-Cai Lam Road</i>	<i>Km0 + 870</i>	<i>9/2002</i>	<i>Transport Engineering Company No.3</i>	<i>Reinforced concrete beam</i>
<i>CL01R3/5D3.0</i>	<i>Hong Ky-Cai Lam Road</i>	<i>Km2 + 210</i>	<i>1/1997</i>	<i>An Thai Company</i>	<i>Wood</i>



NOTES

*A road inventory document
composes of: Road network
diagram + road inventory
table + bridge inventory
table*

2. Learn about steps in setting up a road inventory



Read the following paragraph to understand the procedures of setting up a road inventory

1. Outline the Commune Road Network
2. Collect necessary information
3. Incorporate information into road & bridge inventory table for completing road inventory document



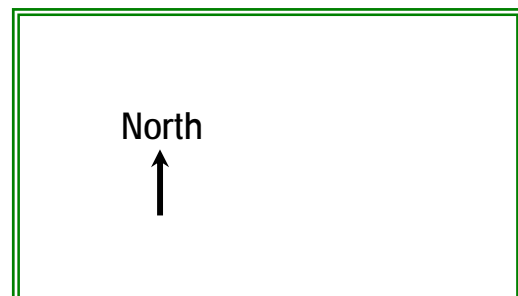
Look at the below presentation to learn how to outline the Commune road network

Imagine overall picture of Commune . This is the North, the North borders the East borders....., the West borders....., the South borders..... This is the People's Committee, and this is..... Key route from to..... Other from National Road to Connect to this key road, at location of and....., there are roads

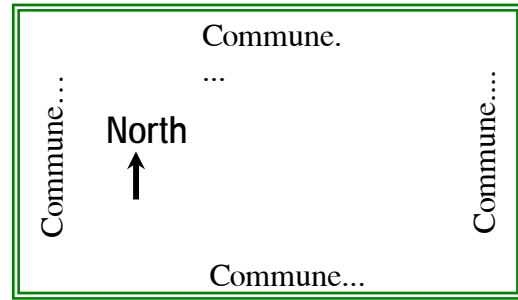


HOW TO OUTLINE ROAD NETWORK

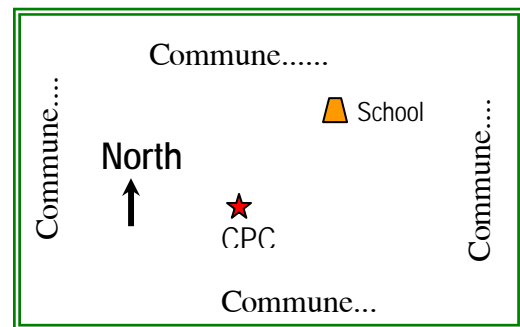
1. Locate the North



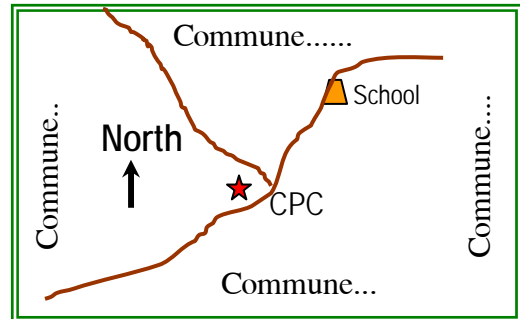
2. Locate bordering areas



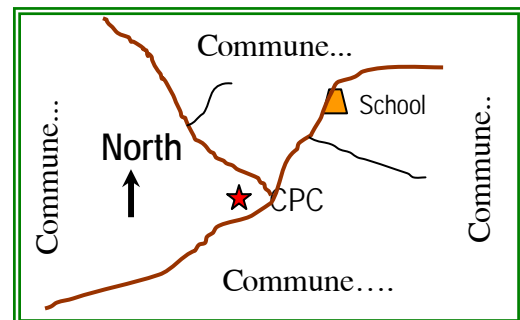
3. Identify key places - names (reference points)



4. Locate key roads (outline Commune road: road from District, inter-commune)

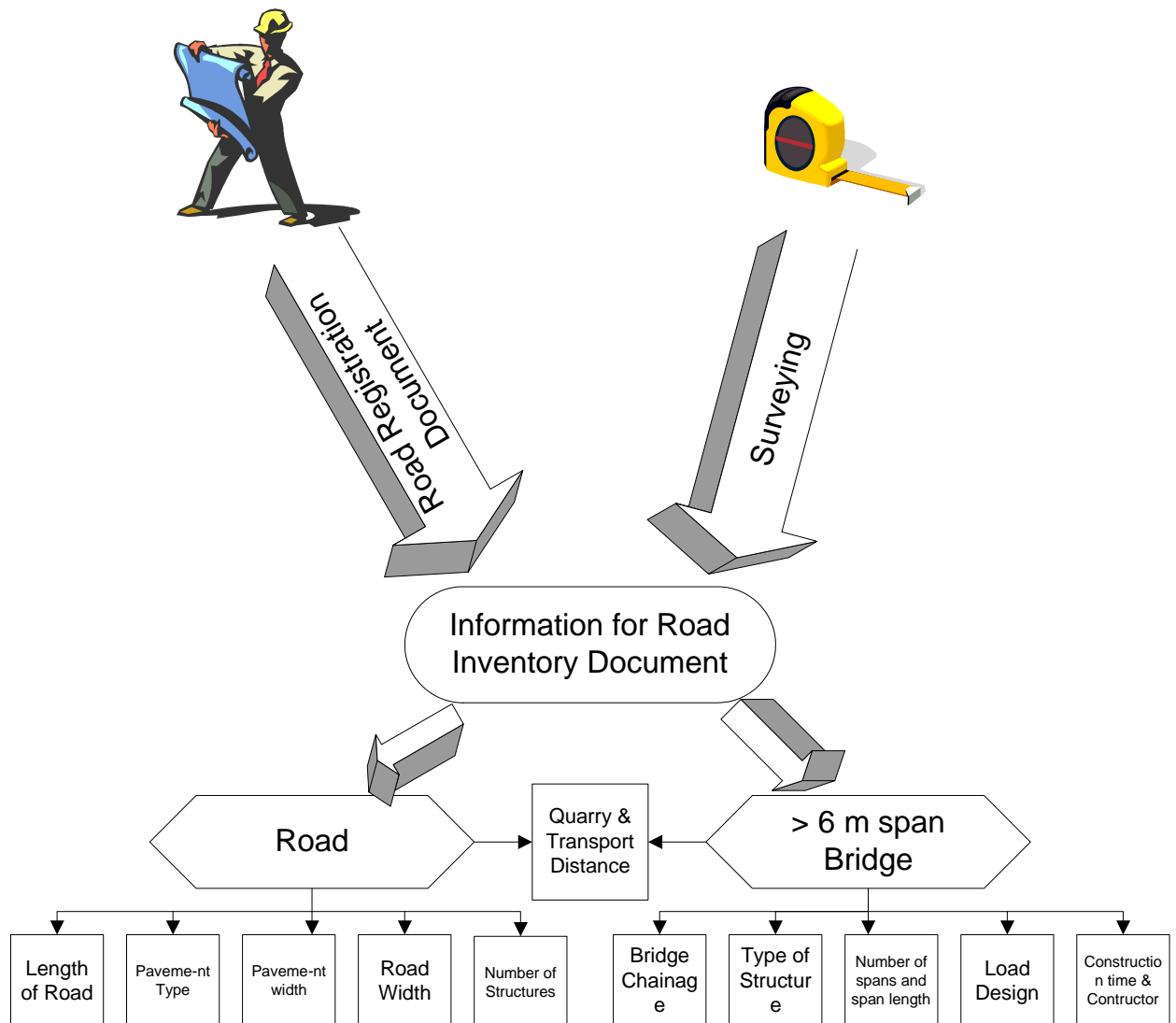


5. Locate more reference points (such as village, hamlet, school...) and outline small routes from key road





Look at the following pictures to find out *necessary information* for road inventory document and *information sources*



notes

Information for road and bridge inventory can be taken from road registration document and/or surveying result

3. Set up a Commune road inventory document



Outline your Commune Road Network based on the guidance above

Commune Road Network..... District..... Province.....
Established by:.....



Fill in the following inventory form with information of your Commune road network.

ROAD INVENTORY FORM

No.	Road Code	Name of road	Length of road (km)	Pavement	Width of road (m)	Number of bridges & culverts with span < 6m	Number of bridges with span ≥ 6m	Distance to Quarry (km)
1
2
3
4
5

BRIDGE INVENTORY FORM

Road Code	Name of road	Location of Bridge	Date of construction	Construction Unit	Types of structure	Number of bridges & culverts with span < 6m	Number of bridges with span ≥ 6m	Remarks
.....
.....
.....
.....
.....



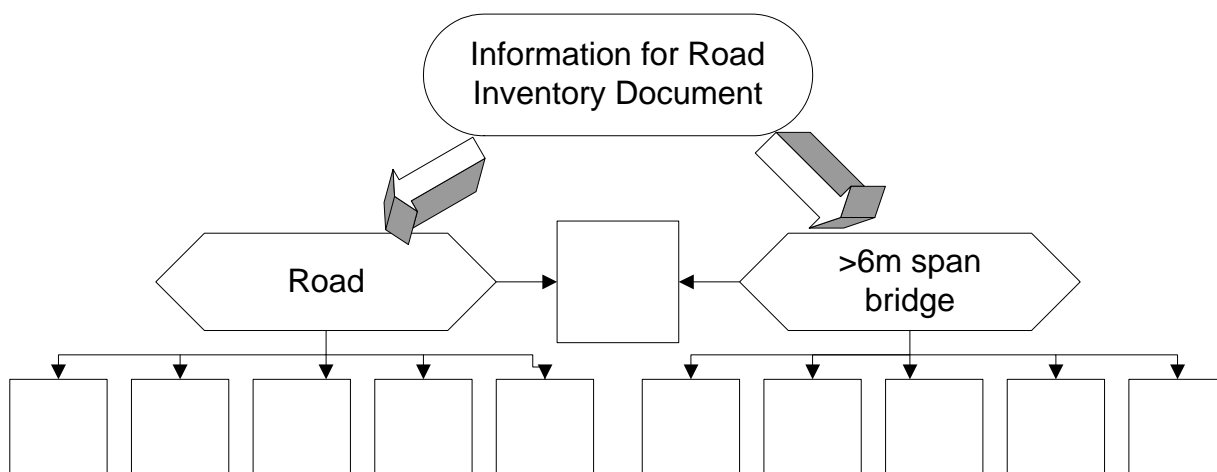
1. Put the correct order steps for outlining Commune road network in the boxes on the right

1. *Define key roads (Outline Commune road: road from District, inter-commune)*
2. *Locating the North*
3. *Identify key place-name (reference points)*
4. *Locate more reference points (such as village, hamlet, school...) and outline small routes from key road*
5. *Locate bordering areas*

Good

Not good

1. Fill in the following boxes with necessary information for Commune road and bridge inventory forms.



Good

Not good