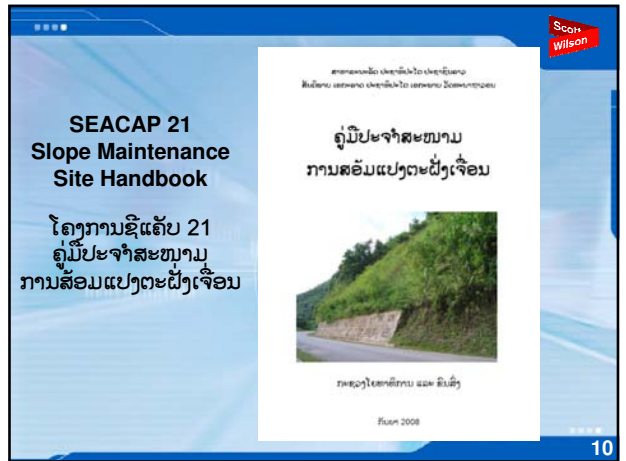




SEACAP 21 Slope Stabilisation Trials: Final Workshop, 26 September 2008



Slope Maintenance Site Handbook (1)
ຄູ່ມືປະຈຳສະໜາມ ການສ້ອມແປງຕະຝັງເຈື່ອນ (1)

- Written for site staff: technicians, supervisors etc.
- English and Lao language versions.
- A5 size, 30 pages, illustrated mainly with photographs.
- Structured around the MPWT's MACs.

- ຂຽນຂຶ້ນເພື່ອພະນັກງານປະຈຳສະໜາມ: ວິຊາການ, ຜູ້ຄຸມງານ ແລະອື່ນໆ.
- ມີສະບັບເປັນພາສາອັງກິດ ແລະ ເປັນພາສາລາວ.
- ເປັນເຫຼັ້ມ ຂະໜາດ A5 ມີທັງໝົດ 30ໜ້າ ມີຮູບພາບສະແດງນຳພ້ອມ.
- ມີໂຄງສ້າງໄປຕາມລະຫັດກົດຈະກຳວຽກສ້ອມແປງຂອງກະຊວງ ຍທຂ.

11

Slope Maintenance Site Handbook (2)
ຄູ່ມືປະຈຳສະໜາມ ການສ້ອມແປງຕະຝັງເຈື່ອນ(2)

- Definition of Maintenance for Slopes.
- Routine Maintenance of Slopes.
- Emergency Maintenance of Slopes.
- Rehabilitation and Improvement.

- ຄຳນິຍາມ ຂອງ ການບຳລຸງຮັກສາຕະຝັງ
- ການບຳລຸງຮັກສາຕະຝັງແບບເປັນປະຈຳ
- ການບຳລຸງຮັກສາຕະຝັງແບບສຸກເສີນ
- ການພື້ນຟູຄືນ ແລະ ການປັບປຸງ

12

SEACAP 21 Slope Stabilisation Trials: Final Workshop, 26 September 2008

4.2 Construction of new walls

What are the main types of walls?

There are three main types of wall constructed in Laos: masonry, gabion and reinforced concrete. Masonry walls can be composite or fully reinforced.

Masonry

Composite masonry wall

Gabion wall

Reinforced concrete wall

Retaining walls may be constructed below or above the road. They retain the ground behind them. Reinforce may also be constructed above the road.

From the road, Reinforced and Retaining walls can both look the same. The difference is that Reinforcement are very thin concrete and Retaining walls are thick concrete and allow sliding from occurring at the base of the slope. They are not very similar, and they do not act as retaining structures.

From considerations of cost, durability, appearance and strength, reinforced masonry walls are generally recommended except where foundation conditions are soft or exposed to rock outcrops. In these cases, gabion walls are recommended.

What wall shape should be used?

The Slope Maintenance Manual describes a number of wall shapes and their advantages and disadvantages. For simplicity, two basic wall shapes are recommended - one for reinforced masonry walls and the other for gabion walls.

LANKOEX REPORT

WALL CONSTRUCTION CHECKLIST - MAIN FEATURES

Checklist with columns: Location, Material, Method, Quality, Safety, etc.

Remarks section for detailed notes.

SEACAP 21 Slope Maintenance Manual

ໂຄງການຊື້ແຮ້ບ21 ຄຸ້ມຄອງສ້ອມແປງຕະຝັງເຈື້ອນ

ຊຸມິການສ້ອມແປງຕະຝັງເຈື້ອນ

ກຸມປະໂຫມດການ ພາບ ຄົນສິງ

Year 2008

Slope Maintenance Manual
ຄຸ້ມຄອງສ້ອມແປງ ຕະຝັງເຈື້ອນ

- Written for road management professionals: engineers.
- English and Lao language versions.
- A4 size, 100 pages, illustrated with drawings photographs.
- Covers all relevant aspects of site inspection, design and construction.
- ຂຽນຂຶ້ນສຳລັບຜູ້ທີ່ມີວິຊາສະເພາະ ທີ່ກຳລັງບໍລິຫານເສັ້ນທາງ: ວິສະວະກອນ.
- ເປັນສະບັບພາສາອັງກິດ ແລະ ພາສາລາວ.
- ເປັນຫົວຂະໜາດ A4, ມີທັງໝົດ 100ໜ້າ, ມີຮູບພາບສະແດງນຳພ້ອມ.
- ລວມເອົາ ປະເດັນຕ່າງໆທັງໝົດທີ່ກ່ຽວພັນກັບ ການກວດກາສະໜາມ, ການອອກແບບ ແລະ ການກໍ່ສ້າງ.

Technical Specifications
ຂໍ້ກຳນົດທາງດ້ານເຕັກນິກ

- Complete technical specifications for slope stabilisation and protection.
- English and Lao language versions.
- Based on international experience and best practices.
- Tested through SEACAP 21 trials and modified accordingly.
- ເຮັດສຳເລັດ ຂໍ້ກຳນົດທາງດ້ານເຕັກນິກ ສຳລັບ ການປັບປຸງສະເຕັ້ຍລະພາບ ແລະ ການປ້ອງກັນຕະຝັງ.
- ມີທັງສະບັບພາສາອັງກິດ ແລະ ພາສາລາວ.
- ອີງໃສ່ ປະສົບປະການຂອງສາກົນ ແລະ ການເຮັດຕົວຈິງຫລາຍທີ່ສຸດ.
- ທົດລອງຜ່ານໂຄງການຊື້ແຮ້ບ21 ແລະ ທັງໄດ້ດັດແກ້ໃຫ້ເໝາະສົມໄປພ້ອມ.

ບູລະນະຮັກສາທາງຫຼວງແມ່ນຮັກຊາດ
Love your Nation, Maintain the Roads