



BFP 02

CPWF WORKING PAPERS
BASIN FOCAL PROJECTS SERIES

Water-use accounts in CPWF basins

Simple water-use accounting
of the Mekong Basin

**Mac Kirby, Mohammed Mainuddin and Judy Eastham,
CSIRO Land and Water, Canberra, Australia.**

The CGIAR Challenge Program on Water and Food, Colombo, Sri Lanka.

© 2010, CPWF.

All rights reserved. Published 2010.

This paper is a contribution to the synthesis work of the CGIAR Challenge Program on Water and Food from the CPWF's Basin Focal Projects. The work was funded by the Challenge Program on Water and Food and by CSIRO Water for a Healthy Country.

It should be cited as:

Kirby, M., M. Mainuddin, and J. Eastham 2010. Water-use accounts in CPWF basins: Simple water-use accounting of the Mekong Basin. CPWF Working Paper: Basin Focal Project series, BFP02. Colombo, Sri Lanka: The CGIAR Challenge Program on Water and Food. 26pp.

Corresponding author: M. Kirby, CSIRO Land and Water, GPO Box 1666, Canberra ACT 2601, Australia. Tel.: +61 (2) 6246 5700. Email: mac.kirby@csiro.au

THE WATER-USE ACCOUNTS SERIES:

The eleven papers in the sub-series Water-use accounts in CPWF basins are:

1. *Model concepts and description*
2. *Simple water-use accounting of the Mekong Basin*
3. *Simple water-use accounting of the Nile Basin*
4. *Simple water-use accounting of the Volta Basin*
5. *Simple water-use accounting of the Ganges Basin*
6. *Simple water-use accounting of the Limpopo Basin*
7. *Simple water-use accounting of the Indus Basin*
8. *Simple water-use accounting of the Karkheh Basin*
9. *Simple water-use accounting of the Niger Basin*
10. *Simple water-use accounting of the São Francisco Basin*
11. *Simple water-use accounting of the Yellow River Basin*

The Challenge Program on Water and Food (CPWF), an initiative of the Consultative Group on International Agricultural Research (CGIAR), is a multi-institutional research-for-development program that aims to increase water productivity for agriculture—that is, to change the way water is managed and used to improve food security and help meet international poverty eradication goals.

The CPWF encourages institutions and policy-makers to implement developments in water, food, and environmental management that are beneficial to the rural poor. The program is founded upon the conviction that practical innovations in research-for-development arise from people working together from a variety of disciplines and backgrounds.

The CPWF's Working Paper series contributes to sharing information from research in progress, work generated before a project's completion. Working papers may contain preliminary material and research results - data sets, methodologies, observations, and findings - that have not been subject to formal external reviews, but have been reviewed by at least two experts in the topic. They are published to stimulate discussion and critical comment.

ISSN - 2076-4502

You can find the CPWF Working Paper series online at

<http://www.waterandfood.org/publications/program-publications/working-papers.html>.

CONTENTS

| | |
|---|-----------|
| List of Tables | 4 |
| List of Figures | 4 |
| 1 Abstract | 6 |
| 2 Introduction | 6 |
| 3 Basic hydrology and outline of simple water account | 7 |
| 3.1 Basic hydrology | 7 |
| 3.2 Simple water account structure | 10 |
| 3.3 Units | 11 |
| 4 Data sources | 11 |
| 4.1 Rainfall | 11 |
| 4.2 Flows | 12 |
| 4.3 Land use | 12 |
| 5 Components and results in detail | 12 |
| 5.1 Stream flow | 12 |
| 5.2 Water use | 16 |
| 5.3 Catchment and basin hydrological characteristics | 18 |
| 6 Example use | 19 |
| 6.1 Testing alternative models – basing Tonle Sap flow on previous month’s Mekong flow | 20 |
| 6.2 Climate change | 21 |
| 7 Conclusions | 24 |
| 8 References | 25 |

LIST OF TABLES

| | | |
|----------|--|----|
| Table 1. | Catchments in the Mekong Basin with their areas. | 8 |
| Table 2. | Annual percentage runoff ratios (runoff/precipitation) for catchments in the Mekong basin. | 20 |

LIST OF FIGURES

| | | |
|------------|---|----|
| Figure 1. | The Mekong Basin, with the catchments used in the water-use account. | 9 |
| Figure 2. | Monthly average rain and potential evapotranspiration in the Mekong Basin. | 10 |
| Figure 3. | Annual rainfall 1951-2000. | 11 |
| Figure 4. | Monthly flow volumes for 1985-1999 for Luang Prabang and Kratie. | 13 |
| Figure 5. | Flow from the upper Mekong at Chiang Saen for 1951 to 2000. | 14 |
| Figure 6. | Flow from the Nam Ngum at Tha Ngon for 1951 to 2000. | 14 |
| Figure 7. | Flow from the Mun-Chi at Ubon Ratchthani for 1951 to 2000. | 15 |
| Figure 8. | Flow in the Mekong at Kratie for 1951 to 2000. | 15 |
| Figure 9. | Comparison of observed and modeled flows in the Tonle Sap River, 1985 to 1999. | 16 |
| Figure 10. | Hysteresis loop of Tonle Sap versus Mekong flows at Kratie. | 16 |
| Figure 11. | Flow in the Tonle Sap River for 1951 to 2000. | 17 |
| Figure 12. | Flow in the Mekong at Phnom Penh for 1951 to 2000. | 17 |
| Figure 13. | Summary of major water uses in the Mekong Basin. | 18 |
| Figure 14. | The spatial distribution of major water uses in catchments of the Mekong Basin. | 19 |
| Figure 15. | Runoff (annual averages 1951-2000) in the catchments in the Mekong Basin. | 21 |

| | | |
|------------|--|----|
| Figure 16. | Comparison of measured and modeled flows of the Tonle Sap River, 1985 to 1999, with Tonle Sap flows based on previous month's Mekong flow. | 22 |
| Figure 17. | Historical and assumed climate change rainfall in Se Bang Hieng in central Laos. | 22 |
| Figure 18. | Flows in the Tonle Sap River with historical rainfall and a demonstration climate change rainfall. | 23 |
| Figure 19. | Flows in the in the Mekong at Phnom Penh with historical rainfall and a demonstration climate change rainfall. | 23 |

1. ABSTRACT

This paper applies the principles of water-use accounts, developed in the first of the series, to the Mekong River basin in Southeast Asia. The Mekong Basin covers six countries, the River rises in China, but there are substantial downstream tributaries from Thailand, Laos, Cambodia, and Vietnam, and from a small area in Myanmar. A unique feature is the reverse flow from the Mekong to the Tonle Sap via the Tonle Sap River at the height of the wet season flow and its ebb as the river levels fall.

Net runoff is about 37% of total precipitation. Forest and woodland cover 43% of the basin and use about 33% of the precipitation. Grassland covers much of the upper part of the Basin, consuming about 6% of the precipitation. Irrigated agriculture covers just 6% of the Basin and uses about 6% of the water (excluding runoff).

Climate change, using an assumed change in rainfall distribution, shows that with the expected shorter and more intense rainy season, and longer and more intense dry season, both floods and seasonal water shortages may be exacerbated.

Keywords: Water use accounts, Mekong basin, top-down modeling, basin water use.

2. INTRODUCTION

The Challenge Program on Water and Food aims to catalyze increases in agricultural water productivity at local, system, catchment, sub-basin and basin scales as a means to poverty reduction and improving food security, health and environmental security. It does this in several priority basins: the Indo-Gangetic Basin, the basins of the Karkheh, Limpopo, Mekong, Nile, São Francisco, Volta, and Yellow River and a collection of small basins in the Andes.

A useful output for each basin, and a key element of the understanding of basin function, is an overview water use account. Water use accounts produced in the same way for each basin would have the further benefit of making easier the development of syntheses of understandings from all the basins.

Here, we describe a draft water use account for the Mekong Basin, developed as an Excel spreadsheet. Water use accounting is used at national (ABS 2004; Lenzen 2004) and basin (Molden 1997; Molden et al. 2001) scales to:

- Assess the consequences of economic growth;
- Assess the contribution of economic sectors to environmental problems;
- Assess the implications of environmental policy measures (such as regulation, charges, and incentives);
- Identify the status of water resources and the consequences of management actions; and
- Identify the scope for savings and improvements in productivity.

One limitation of the existing accounting methods is that they are static, providing only a snapshot for a single year or an average year. Furthermore, they do not link water movement to use. In contrast to the static national and basin water use accounts referred to above, our accounts are dynamic, with a monthly time step, and thus account for seasonal and annual variability. They can also examine dynamic effects

such as climate change, land use change, changes to dam operation, etc. Because the accounts are assembled in Excel, they are quick and easy to develop, modify and run. We have already applied this accounting method to several major river basins including the Murray-Darling, Karkheh and the Limpopo (Kirby et al. 2006a; Kirby et al. 2006b).

There are several other models of the Mekong Basin. The SWAT / IQQM / ISIS suite (Podger et al. 2004) was developed for policy and management support in the Mekong River Commission. A MIKE11 model was developed to study flooding of the lower floodplains only (Fujii et al. 2003; Morishita et al. 2004). A SLURP model, (Kite 2001) provides a basin-wide model based on a GIS framework. The RAM model (Johnston et al. 2003) is a hydrology – economics model that relies on the SWAT / IQQM / ISIS suite for many of its hydrology inputs. The economic - hydrology model of Ringler (2001) deals only with average conditions and does not deal with runoff inflows. Thus, these models leave a need for a simple water-accounting method that links hydrologic and water use dynamics in a versatile format and facilitates relatively rapid, integrated investigations on the basin-scale.

It must be emphasized that the best possible hydrologic modeling of the Mekong basin is already available in the SWAT / IQQM / ISIS suite (Podger et al, 2004). The model developed here is not a substitute, and is not designed to do the same job. As well as providing the best modeling, during the development of the SWAT / IQQM / ISIS suite flow records were analyzed extensively and consistent sets of corrected flow records were developed that satisfy mass balance, etc. The analysis and model developed here relies heavily on the SWAT / IQQM / ISIS suite development and output. Indeed, the model described here is calibrated against SWAT / IQQM / ISIS flow output.

3. BASIC HYDROLOGY AND OUTLINE OF SIMPLE WATER ACCOUNT

3.1. Basic hydrology

The hydrology of the Mekong Basin is described in greater detail in MRC (2005). Here we give a brief summary. The Mekong Basin covers about 790,000 km², and is drained by the 4200 km long River Mekong. The basin is mostly long and thin, particularly in the upper, Chinese part, and the Mekong is fed mostly by many short tributaries draining small catchments (Figure 1 and Table 1). The largest catchments are the Mun-Chi (about 107,000 km²), the Se San (73,000 km²) and the Tonle Sap (87,000 km²).

Note: the area of the Mekong Basin is often given as 795,000 km², though the exact area depends on what is classified as inside the basin in the area around the delta. Different maps show different areas around the delta. The area of 788,173 km² given in the table is the area used in the water use account spreadsheets.

Table 1. Catchments in the Mekong Basin with their areas

| Catchment | Location | Area, km ² |
|---------------|------------------|-----------------------|
| Mekong | Upper Mekong | 90,771 |
| Mekong | Chiang Saen | 102,936 |
| Moung Nouy | Moung Nouy | 26,044 |
| Mekong | Luang prabang | 56,801 |
| Mekong | Vientiane | 28,349 |
| Nam Ngum | Tha Ngon | 17,695 |
| Mekong | Nakhon Phanom | 53,085 |
| Mekong | Mukdahan | 21,081 |
| Se Bang Hieng | Ban Keng Done | 18,050 |
| Chi | Yasothon | 45,368 |
| Mun | Ubon Ratchathani | 61,812 |
| Mekong | Pakse | 29,224 |
| Se San | Se San | 73,232 |
| Mekong | Kratie | 31,103 |
| Mekong | Tonle Sap | 87,192 |
| Mekong | Phnom Penh | 7,901 |
| Mekong | Border | 20,167 |
| Mekong | Delta | 17,362 |
| Total | | 788,173 |

The source of the Mekong is fed by snowmelt, though precipitation is much less than throughout the Lower Mekong (Figure 2). The Lower Mekong is fed by runoff, characterized by a pronounced wet and dry season. The peak flow from the Upper Mekong more or less coincides with the peak inflows from runoff into the Lower Mekong. Furthermore, the wet season affects the whole of Lower Mekong more or less simultaneously (Figure 2). The rainfall is greater in the eastern, mountainous regions of Laos, from which the major portion of the runoff and flow is generated. The rainfall in NE Thailand is less, and the potential evapotranspiration somewhat greater than the rest of the basin, and this area contributes the smallest portion of the runoff and flow.

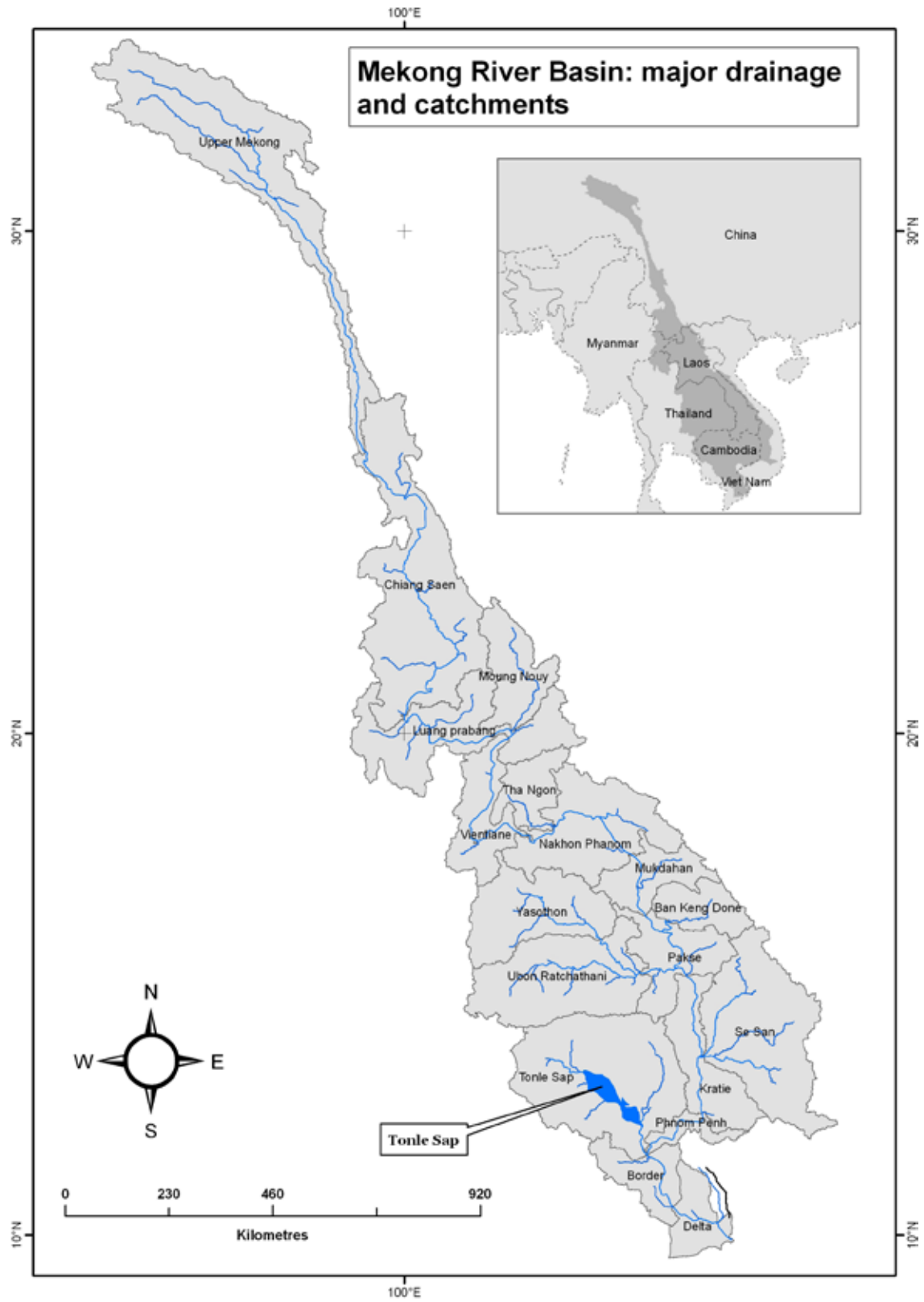


Figure 1. The Mekong Basin, with the catchments used in the water-use account.

3.2. Simple water account structure

The simple water account has two parts:

- A hydrological account of the water flowing into the basin (primarily rain), flows and storages within the basin, and water flowing out of basin (primarily as evapotranspiration and discharge to the sea); and
- A further partitioning of the evapotranspiration into the proportion of evapotranspiration accounted for by each vegetation type or land use, including evapotranspiration from wetlands and evaporation from open water.

The account is a top-down model (Sivapalan et al. 2003), based on simple lumped partitioning of rainfall into evapotranspiration and runoff. This is done at the catchment level, with the separation into different vegetation types within catchments not spatially explicit. Runoff flows into the tributaries and into the Mekong, with discharge downstream calculated by simple water balance. During high flows, some of the flow is stored in the channels, and some in lakes and wetlands from which much water is lost to evaporation.

The simple hydrological account is based on a monthly time step, this being considered adequate for our purpose. The model is described in detail in a companion report *Water-use accounts in CPWF basins: Model concepts and description* (Kirby et al. 2010). Here we describe only that part of the model which differs from the general set of equations in Kirby et al. (2010).

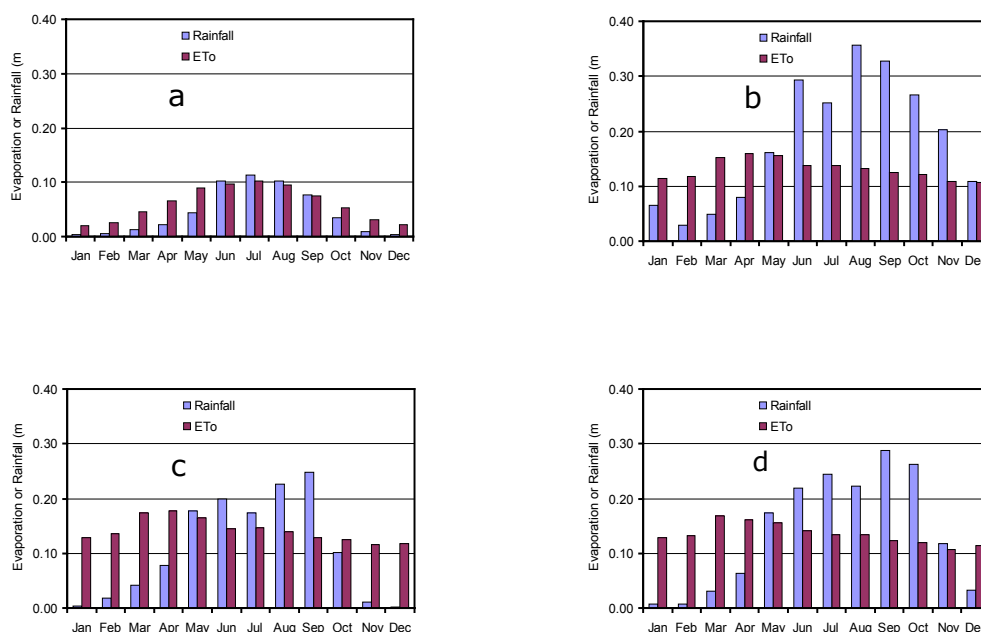


Figure 2. Monthly average rain and potential evapotranspiration in the Mekong Basin.

a). Upper Mekong; b). Se Bang Hieng in central Laos; c). Chi in NE Thailand; d). Lower Mekong around Phnom Penh.

In addition to the spatial variability of precipitation, there is considerable year-to-year variability (Figure 3).

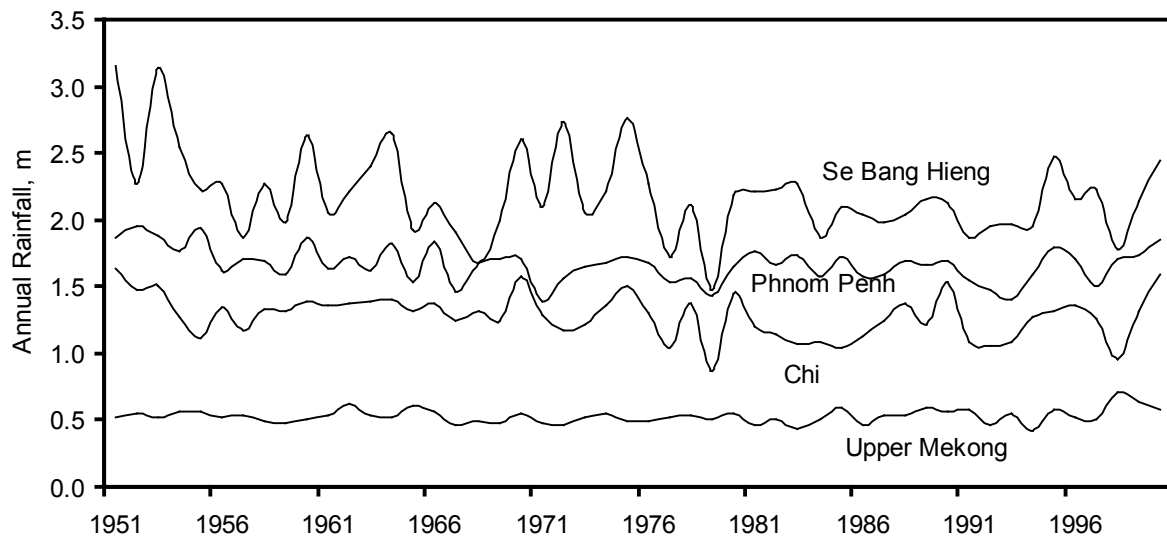


Figure 3. Annual rainfall 1951-2000.

3.3. Units

Rain, evapotranspiration and potential evapotranspiration are given in mm.

River flows and storages, and lake storage, are given in mcm (million cubic meters). 1 mcm is equivalent to one metre over one square kilometer. 1000 mcm = 1 bcm (billion cubic meters) = 1000 m over 1 km² = 1 km³.

4. DATA SOURCES

The datasets used in this water use account were taken from several sources. Some were readily available on the internet; others were obtained from the authors of reports and papers about the Mekong.

4.1. Rainfall

The rainfall and other climate data were taken from the Climate Research Unit at the University of East Anglia (specifically, a dataset called CRU_TS_2.10). They cover the globe at 0.5° (about 50 km) resolution, at daily intervals for 1901 to 2002. The dataset was constructed by interpolating from observations. For recent decades, many observations were available and the data show fine structure. For earlier decades, few observations were available and the data were mostly modeled and lack fine structure. We sampled the rainfall and other climate surfaces for each catchment within the basin, to calculate catchment area-means of rainfall and potential evapotranspiration for each month. The method is described in more detail in Kirby et al. (2010).

4.2. Flows

Reach flows were taken from a dataset called ds552.1, available on the internet (<http://dss.ucar.edu/catalogs/free.html>) (Dai and Trenberth 2003). The dataset also gives contributing drainage areas for each flow gauge. Flow records were not available for all the catchments, particularly those downstream of Pakse. For downstream catchments, the flow results used in the RAM (Johnston et al. 2003) were used here. For some catchments, no flow records or estimates were available: these included the Upper Mekong (the upper part of the Lancang in China, the lower part of the Lancang being gauged at Chiang Saen), the Se San, and the delta region. For these catchments, runoff and flows were calculated such that calculated flow matched the next measured flow downstream.

4.3. Land use

Land use was taken from the 1992-3 AVHRR dataset (IWMI 2006), which has more than 20 land-use classes, many of which have similar patterns of water use. The land-use classes were therefore aggregated into rainfed agriculture, irrigated agriculture, grassland, and woodland and other. The aggregated class of grassland contains important areas of other land uses including shrubland and barren land. For the current water account, land use was considered static throughout the period assessed.

5. COMPONENTS AND RESULTS IN DETAIL

5.1. Stream flow

The consequence of the rainfall is that the Mekong has a very pronounced seasonal variation in flow, with the high season flow being 15 – 30 times the low season flow. Furthermore, the high season flow occurs along the whole length of the Mekong at more or less the same time, with only a short lag between upstream and downstream, as shown in Figure 4.

5.1.1. Upper Mekong

The flow at Chiang Saen shows the pronounced seasonal pattern, with some base flow (Figure 5).

5.1.2. Chiang Saen to Kratie

The middle reaches of the Mekong preserve the flow pattern established at Chiang Saen, with the volumes growing greater as tributaries add to the flow (Figure 6 to Figure 8). Despite being only about one sixth the area of the drier Mun-Chi (Figure 7) the wetter Nam Ngum supplies nearly as much water to the Mekong (Figure 6).

5.1.3. Tonle Sap dynamics

When the Mekong is at the peak flow, its level is above that of the Tonle Sap River which drains the Tonle Sap (Great Lake). Hence water is pushed up the Tonle Sap River and is stored in the lake. This reverse flow reverts to normal flow when the Mekong flow recedes, and the Tonle Sap River then drains the stored water plus additional water

from runoff within the Tonle Sap catchment. The storage of water within the lake is of great importance to local fisheries and livelihoods.

Flow in the Tonle Sap River, Q_{TS} , and consequently storage in the Lake, depends on the difference in height between the Tonle Sap River and the Mekong. It is also assumed that the flow capacity of the Tonle Sap River increases with increasing height. Thus:

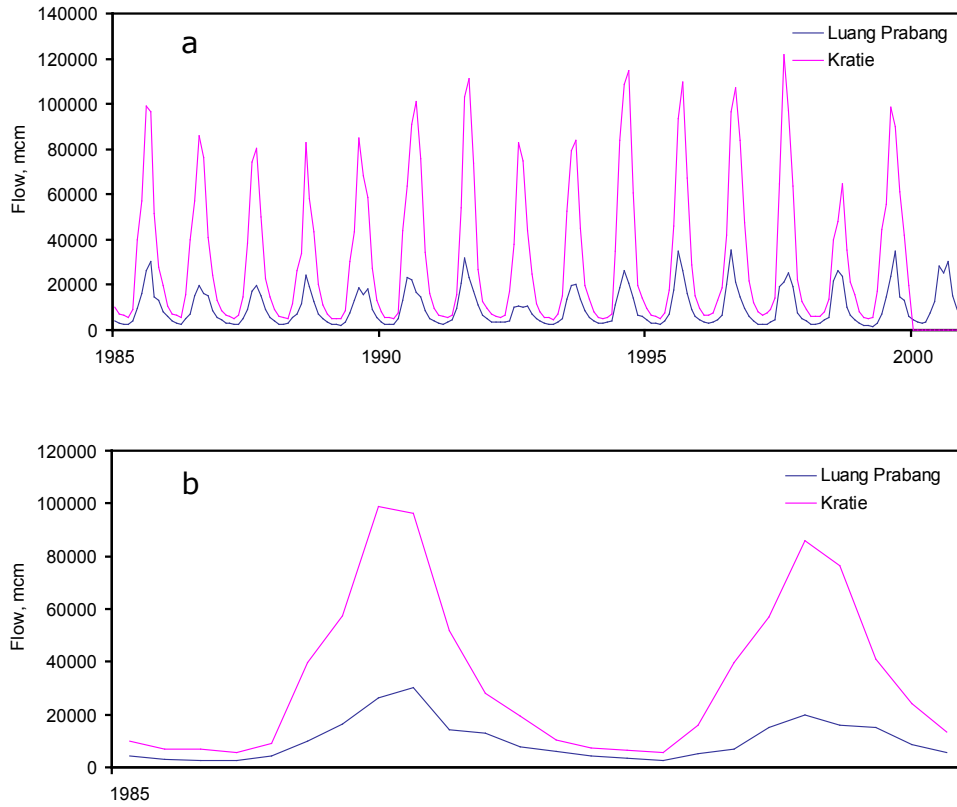


Figure 4. Monthly flow volumes for 1985-1999 for Luang Prabang and Kratie. a). 1985-2000; b). detail 1985-1986.

$$Q_{TS} = c6(H_{TS} - H_M - c7) H_{TS}^2 \quad (1)$$

where $c6$ and $c7$ are parameters, and

H_{TS} and H_M are the heights of the Tonle Sap River and the Mekong.

The terms in brackets account for the flow dependence on height difference, whereas the H_{TS}^2 term accounts for the increasing flow capacity of the Tonle Sap River with increasing height. The $c7$ parameter accounts for the fact that the absolute heights in the two rivers are not calculated. Rather, relative heights are calculated from the volume of water stored in the Tonle Sap Lake, S_l and the flow in the Mekong as:

$$\begin{aligned} H_{TS} &= c8(S_l + c9)^{0.5} \\ H_M &= c9Q_{MK}^{0.5} \end{aligned} \quad (2)$$

where $c8$ and $c9$ are parameters.

Note that the height of the Mekong, H_M , is calculated from the flow at Kratie, Q_{MK} . When $(H_M + c7) > H_{TS}$, Q_{TS} is negative, indicating flow reversal.

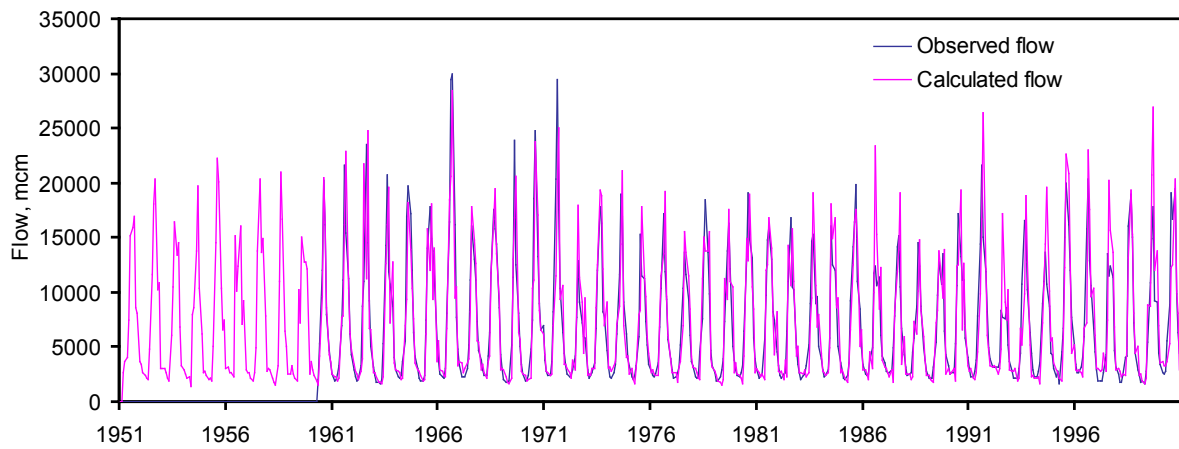


Figure 5. Flow from the upper Mekong at Chiang Saen for 1951 to 2000.

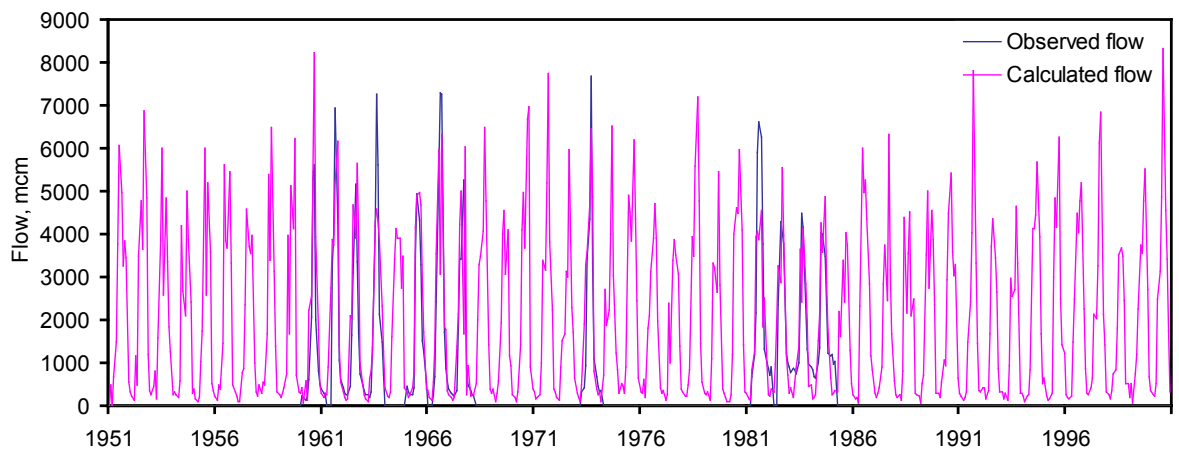


Figure 6. Flow from the Nam Ngum at Tha Ngou for 1951 to 2000.

Lake storage, S_l , is given by the storage at the previous time step, plus runoff from the Tonle Sap catchment, minus losses (evaporation, etc), minus flow in the Tonle Sap River.

$$S_l^t = S_l^{t-\Delta t} + Ro - L - Q_{TS} \quad (3)$$

This model was tested using observed Mekong flows at Kratie and SWAT/IQQM-modeled catchment runoff, and compared to observed flows in the Tonle Sap River (Figures 9 and 10).

The modeled flow in Figure 9 and Figure 10 uses the observed flows at Kratie as input. Using the modeled flows as input results in a somewhat poorer fit (Figure 11).

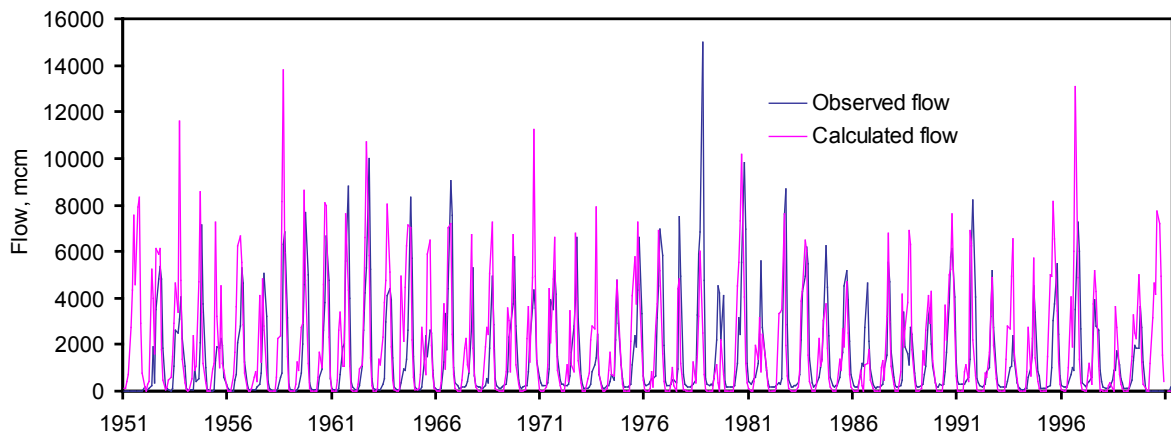


Figure 7. Flow from the Mun-Chi at Ubon Ratchthani for 1951 to 2000.

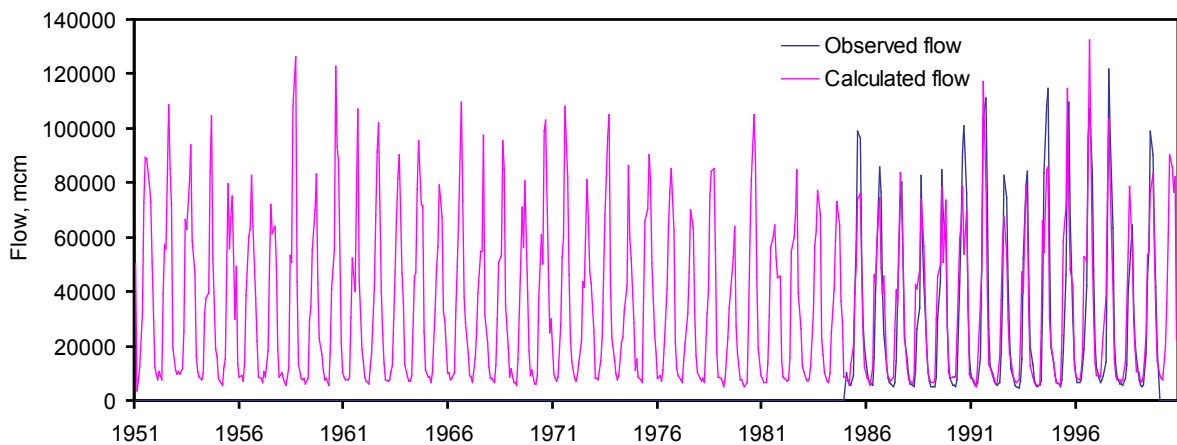


Figure 8. Flow in the Mekong at Kratie for 1951 to 2000.

At Phnom Penh, the Tonle Sap River joins the main stem of the Mekong. Flow at this point combines the influences of the floods in the reach from Kratie to Phnom Penh and the reversing flow of the Tonle Sap (Figure 12). The peak flows in the wet season are a little less than those at Kratie (Figure 8), because of the flow into the Tonle Sap. The draining of the Tonle Sap back to the Mekong in the dry season results in greater dry season flows.

Flows from Phnom Penh to the mouths of the Mekong in the delta in Vietnam are, in aggregate, similar to those at Phnom Penh, but are divided amongst several main channels.

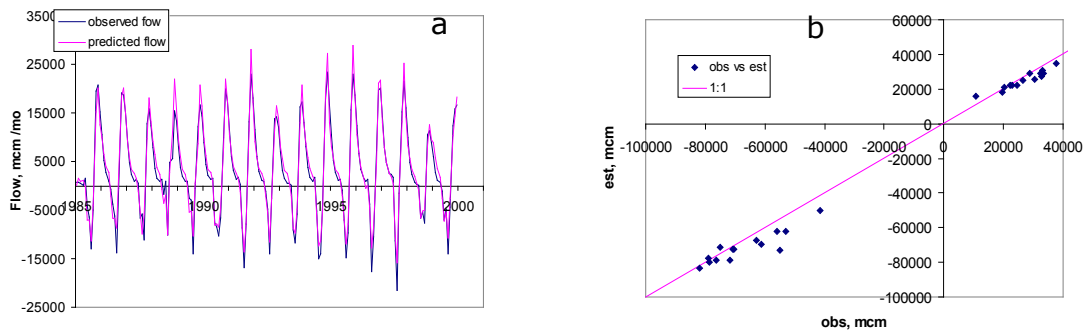


Figure 9. Comparison of observed and modeled flows in the Tonle Sap River, 1985 to 1999. a). hydrograph of the Tonle Sap River flows; b). observed and estimated total annual outflows and inflows into the Tonle Sap lake from the Tonle Sap River (i.e. the areas under the curves in Figure 9a).

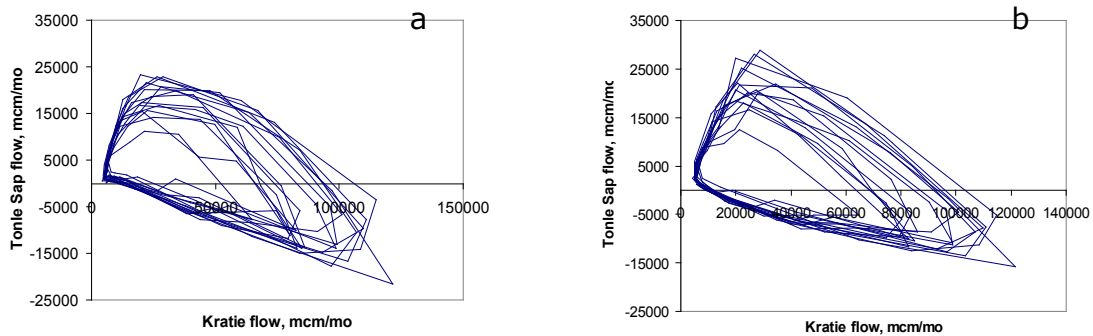


Figure 10. Hysteresis loop of Tonle Sap versus Mekong flows at Kratie. Comparison of the a). observed and b). predicted.

5.2. Water use

Figure 13 summarizes the major water uses in the basin. The mean annual input by precipitation to the Mekong basin totals about 1,200,000 mcm. Net runoff comprises the runoff remaining after all the water uses in the basin have been satisfied, and includes all other storage changes and losses. Net runoff from the basin is about 441,000 mcm or about 37% of the total precipitation input. Forest and woodland is the most extensive land use, covering 43% of the basin. Its water use is correspondingly high, with a mean annual water use of about 390,000 mcm, or 33% of the total precipitation, or about 52% of the water consumed by the various land uses (i.e., the latter figure excludes net runoff) (Figure 13).

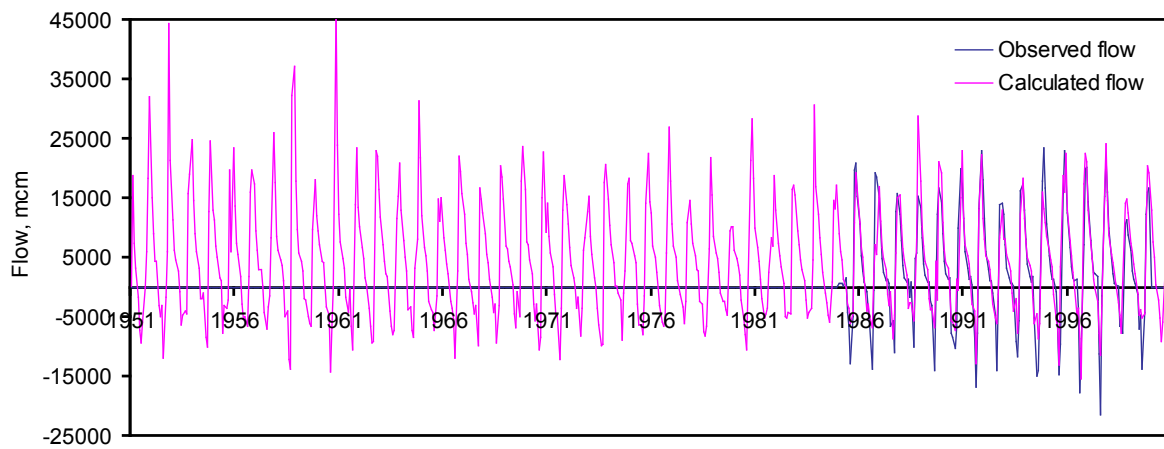


Figure 11. Flow in the Tonle Sap River for 1951 to 2000.

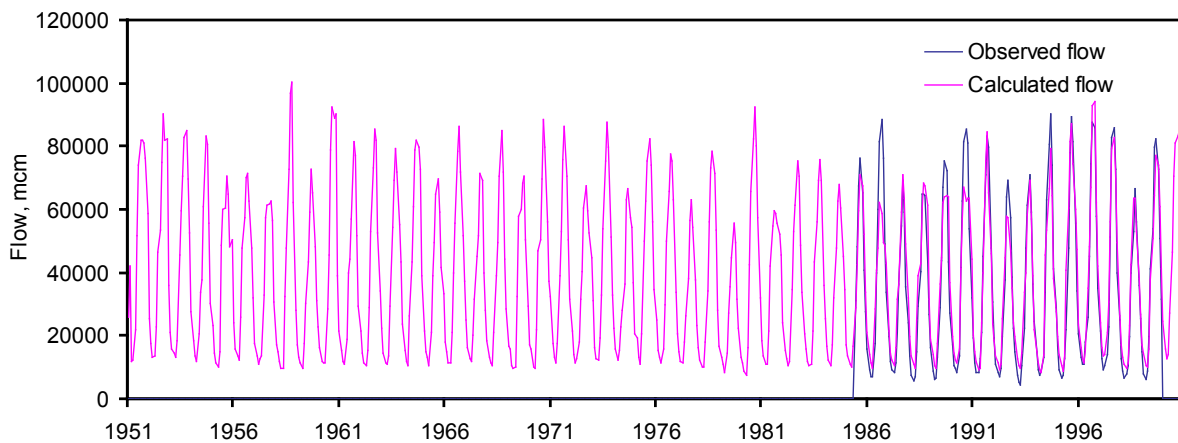


Figure 12. Flow in the Mekong at Phnom Penh for 1951 to 2000.

Irrigated agriculture covers about 6% of the basin. The estimated mean annual water use by irrigated agriculture is about 46,000 mcm, or 4% of the rainfall and 6 % of the total water use (excluding net runoff). The majority of the irrigated water use is from crops irrigated from the surface water resources. The aggregated class grassland, which includes shrubland and barren land, covers 22% of the basin, almost all in the upper basin, and consumes about 72,000 mcm (10% excluding net runoff) of the water used.

The distribution of the different water uses across the basin is shown in Figure 14. The figure depicts the water uses in each catchment, and is the annual average water use in each category calculated from the individual monthly water uses. It does not, however, represent the water balance at the basin level: this is because, for example, the irrigation in the delta part of the basin uses the runoff water from upstream, and thus this water is double counted at the basin level. The net runoff from the whole basin is shown in Figure 13. The figure shows the different behaviour of the runoff-generating upper and eastern part of the basin, and the agriculture dominated middle-western parts of the basin in Thailand. Irrigation is a major water use in most parts of the basin.

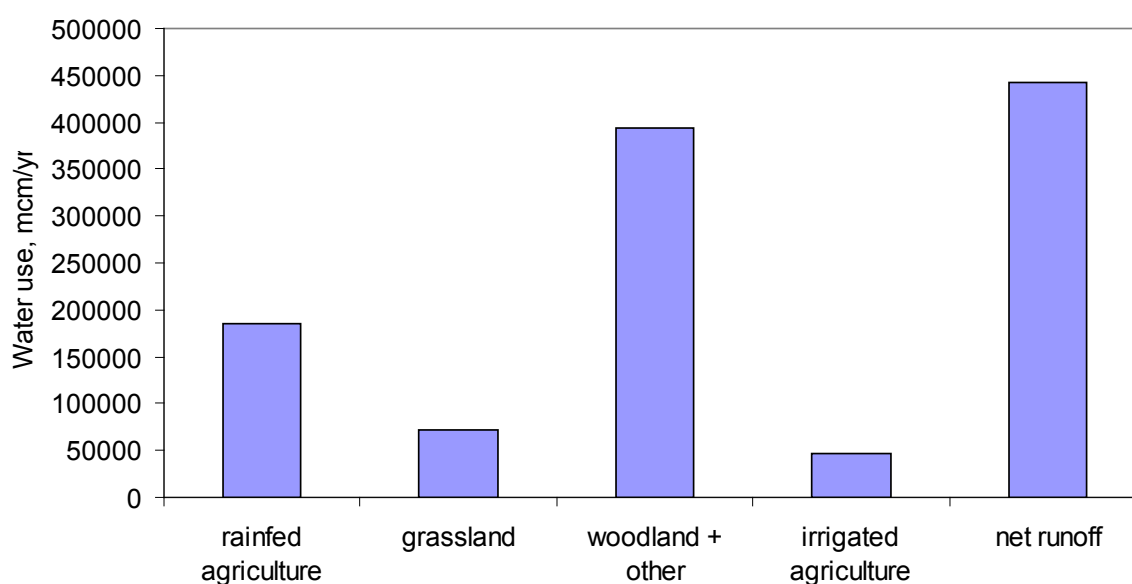


Figure 13. Summary of major water uses in the Mekong Basin. Grassland includes shrubland and barren land (see Section 4.3).

5.3. Catchment and basin hydrological characteristics

Selected hydrological characteristics will be useful for comparing the Mekong basin hydrological function and its vulnerability with those of other basins under study in the Challenge Program. Some of these hydrological characteristics are outlined briefly below.

Runoff characteristics for different basins may be compared by comparing their annual percentage runoff ratios (total basin runoff/total basin precipitation). The runoff ratio for the Mekong basin is 37 % (ie. mean annual net runoff is 37 % of mean annual precipitation). Similarly, differences in runoff characteristics for the different catchments in the basin can be seen by comparing their annual runoff ratios (Table 2).

The runoff ratios of the Nam Ngum at Tha Ngom and the Mekong at Nakhon Phanom are larger than might be expected, and may indicate a problem with the rainfall data, the flow data, or both.

The annual runoff increases with annual precipitation (Figure 15), but the data show considerable scatter. This may be a result of the data problems referred to above. The catchments with high rainfall but zero apparent net runoff are in the delta region. Here there is runoff, but it does not necessarily find its way to the Mekong.

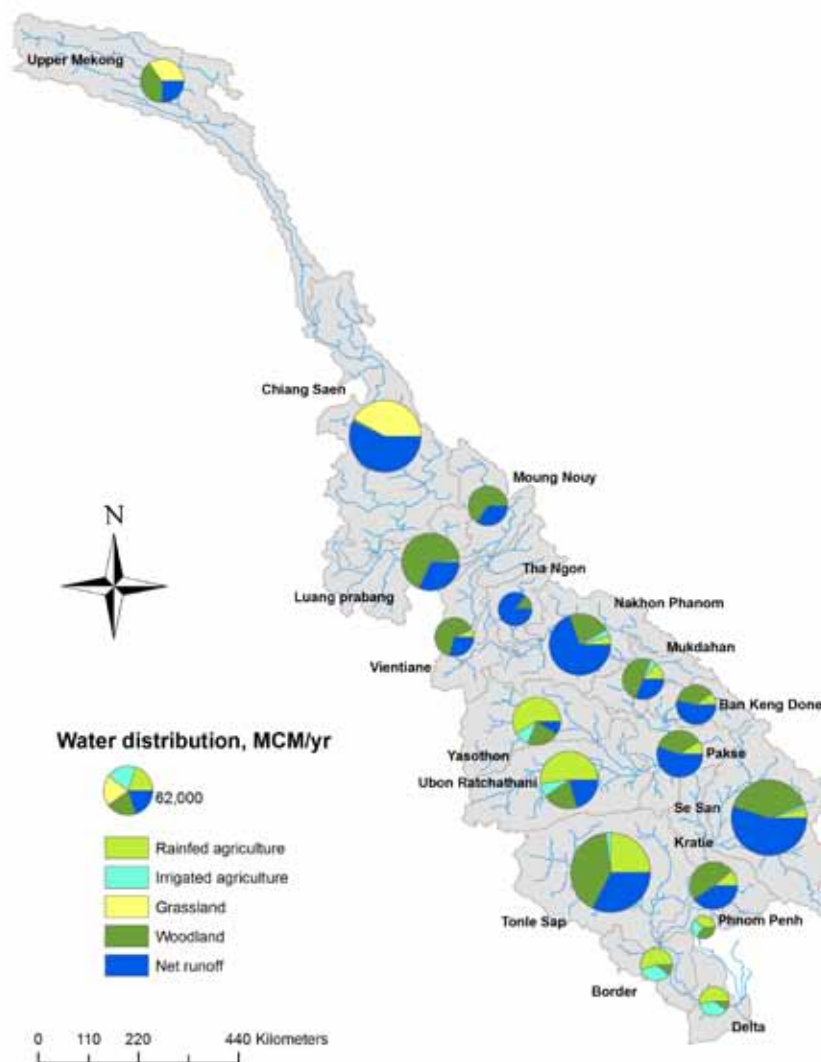


Figure 14. The spatial distribution of major water uses in catchments of the Mekong Basin. Woodland includes other minor land uses. Grassland includes shrubland and barren land (see Section 4.3).

6. EXAMPLE USE

We demonstrate the utility of this simple spreadsheet model to aid in quick investigation and evaluation of aspects of Mekong basin dynamics. We give here two examples, the first tests the performance of alternative formulations, and the second explores climate change impacts in the basin.

Table 2. Annual percentage runoff ratios (net runoff/precipitation) for catchments in the Mekong basin.

| Catchment | Location | Runoff ratio % |
|---------------|------------------|----------------|
| Mekong | Upper Mekong | 25 |
| Mekong | Chiang Saen | 57 |
| Moung Nouy | Moung Nouy | 35 |
| Mekong | Luang prabang | 32 |
| Mekong | Vientiane | 29 |
| Nam Ngum | Tha Ngon | 86 |
| Mekong | Nakhon Phanom | 70 |
| Mekong | Mukdahan | 31 |
| Se Bang Hieng | Ban Keng Done | 53 |
| Chi | Yasothon | 9 |
| Mun | Ubon Ratchathani | 21 |
| Mekong | Pakse | 55 |
| Se San | Se San | 55 |
| Mekong | Kratie | 40 |
| Mekong | Tonle Sap | 32 |
| Mekong | Phnom Penh | 0 |
| Mekong | Border | 0 |
| Mekong | Delta | 0 |
| Total | | 37 |

6.1. Testing alternative models – basing Tonle Sap flow on previous month's Mekong flow

Temporal discrimination in any model representation can have quite important impacts on model results. For the Mekong basin, we found this to be quite important, particularly in representing the dynamics of the Tonle Sap River flow and reversal of flow, where the flow in the Mekong (at Kratie, see discussion in section 5.1.2) is used in expressions to determine the magnitude and direction of flow in the Tonle Sap River. One other water accounting application, the Water Evaluation and Planning (WEAP) software, cannot determine model variables in a given time step using other model parameters also being evaluated in that time step. For such calculations, WEAP relies on the use of either values determined in the previous time step or expressions that estimate values for these needed parameters for the current time step.

To test the consequences of use of previous time step values to determine Tonle Sap river flow in a monthly time step construct, we make the simple substitution in the second of Equation (5) of using the previous month's Mekong flow

$$H_M = c9(Q_{MK}^{t-\Delta t})^{0.5} \quad (3 \text{ part 2, restated})$$

The consequences of this change in the Tonle Sap River and in the Mekong downstream are shown in figure 16. Comparing this figure with the corresponding figure for the

“base case” (Figure 11) above reveals that the modeled flow into the Tonle Sap has both shifted by one month, and the annual flow in and out is less. The use of smaller time steps would diminish this problem, as would expressions that estimate current time step values of the needed parameters.

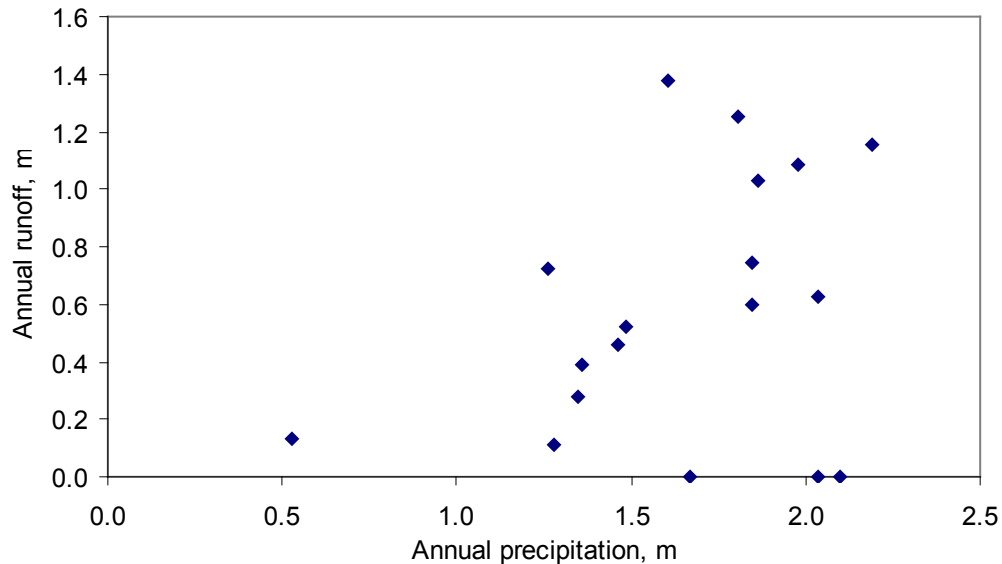


Figure 15. Runoff (annual averages 1951-2000) in the catchments in the Mekong Basin

6.2. Climate change

Some studies identify threats from climate change. The picture is neither clear nor uniform across the basin, but the studies suggest that in several regions the dry season may lengthen and intensify, and that the rainy season may shorten and intensify. Thus both seasonal water shortages and floods may be exacerbated, as may saltwater intrusion into the delta (Hoanh et al. 2003; Snidvongs et al. 2003; Chinvano 2004). To demonstrate the sensitivity of flows to such changes in rainfall, the rainfall amount each month were adjusted with the following formula:

$$P_{cc,i} = P_o + f_s (P_{m,i} - P_o) \quad (4)$$

where $P_{cc,i}$ is the rainfall under climate change in month i ,

$P_{m,i}$ is the historical (non-climate change) rainfall in that month,

f_s is a shift factor, taken as 1.3 for this demonstration, and

P_o is an offset value chosen such that the mean annual rainfall after the transform equals that before it.

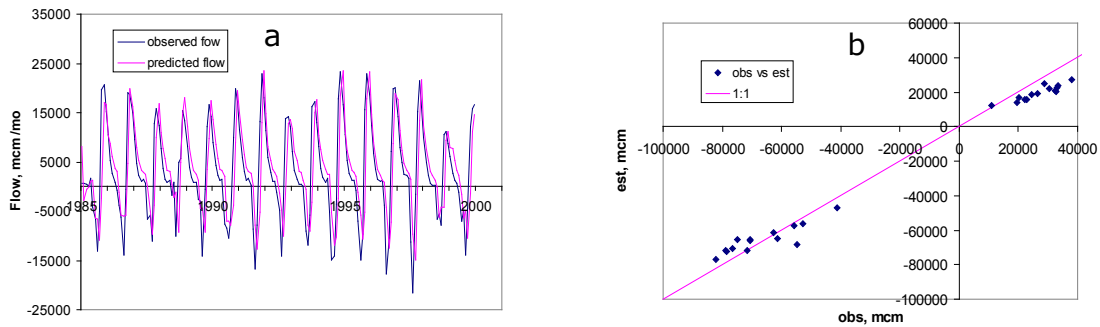


Figure 16. Comparison of measured and modeled flows of the Tonle Sap River, 1985 to 1999, with Tonle Sap flows based on previous month’s Mekong flow. a). hydrograph of observed and predicted flow. b). observed and estimated total annual outflows and inflows into the Tonle Sap Lake from the Tonle Sap River (i.e. the areas under the curves in Figure 16a).

The transformed rainfall for the Se Bang Hieng in central Laos is seen in Figure 17. We emphasise that this is not a climate change prediction, but a simple demonstration of the use of the water use account spreadsheet and the sensitivity of the modeled flows to the change in rainfall.

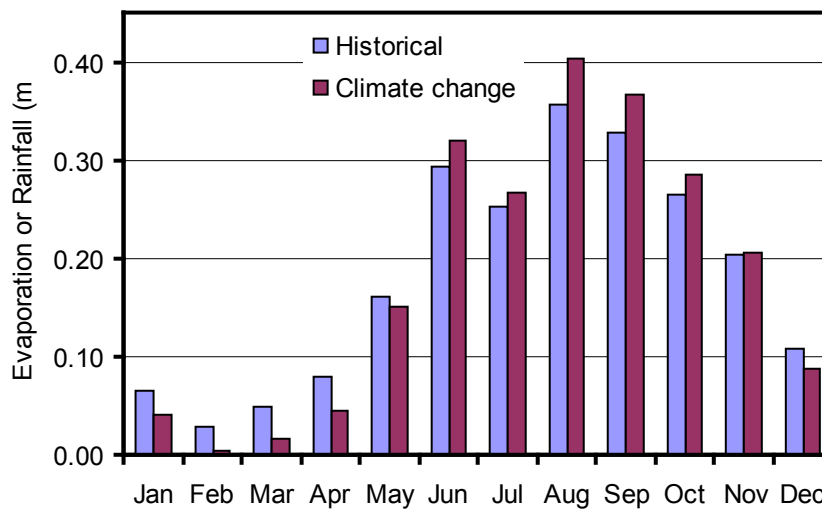


Figure 17. Historical and assumed climate change rainfall in Se Bang Hieng in central Laos.

With the changed rainfall, more water is modeled as flowing both out of (normal flow, positive values) and into (reversing flow, negative values) the Tonle Sap (Figure 18). The lake is predicted to expand more in the wet season with the greater reversing flow and greater local inflows, and to shrink to a smaller volume with the longer and drier dry season. Similarly, the peak wet season flow at Phnom Penh is predicted to be greater, and the dry season flow less, under the demonstration climate change scenario (Figure 19).

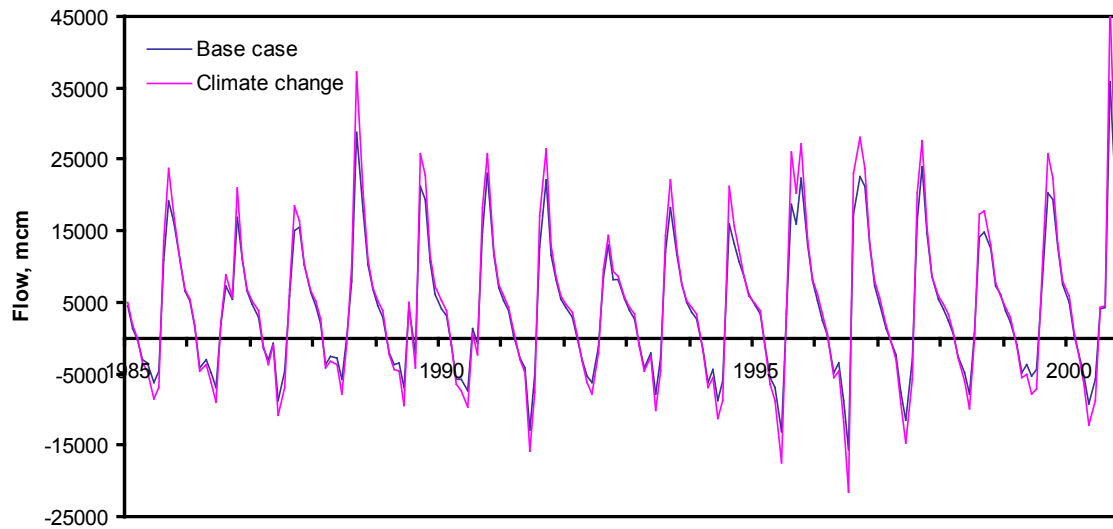


Figure 18. Flows in the Tonle Sap River with historical rainfall and a demonstration climate change rainfall.

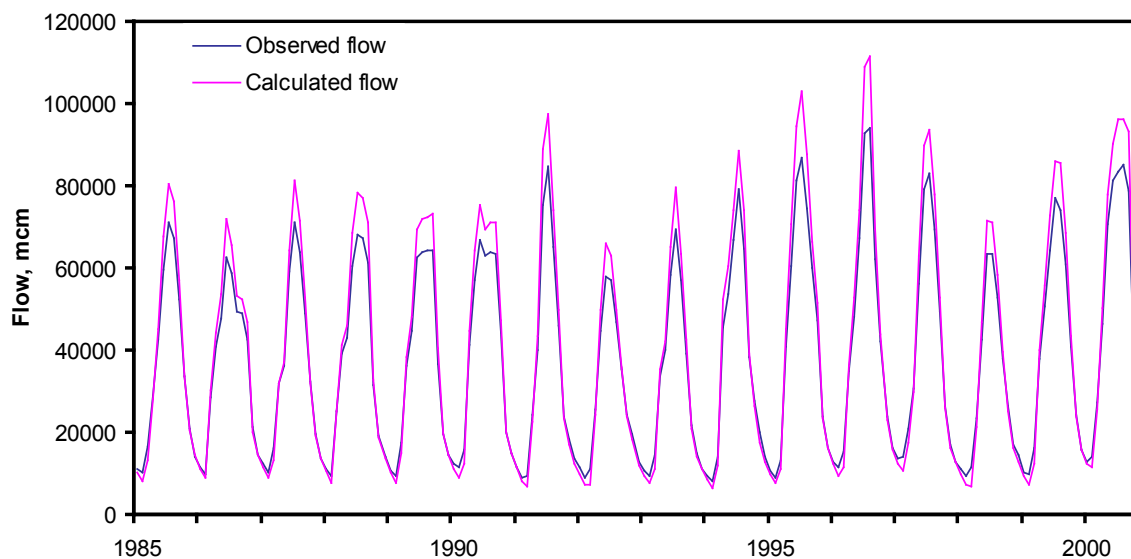


Figure 19. Flows in the in the Mekong at Phnom Penh with historical rainfall and a demonstration climate change rainfall.

With the changed rainfall, more water is modeled as flowing both out of (normal flow, positive values) and into (reversing flow, negative values) the Tonle Sap (Figure 18). The lake is predicted to expand more in the wet season with the greater reversing flow and greater local inflows, and to shrink to a smaller volume with the longer and drier dry season. Similarly, the peak wet season flow at Phnom Penh is predicted to be greater, and the dry season flow less, under the demonstration climate change scenario (Figure 19).

The floods in the Mekong destroy life and property on the one hand, while on the other they are vital to many ecosystems and to fish production and hence food resources. The

anticipated changes to climate and hence flow are expected to affect agriculture and food production greatly, and exacerbate the problems of supplying the increase in food demand with growing populations (Hoanh et al. 2003; Snidvongs and Teng 2006).

7. CONCLUSIONS

A very simple spreadsheet model with few adjustable parameters has captured most of the runoff and river flow behavior in the lower Mekong Basin. Obvious features such as the flow reversal of the Tonle Sap are modeled reasonably well. Less obvious features such as flow lags and local storages are also simulated reasonably well. The flooding of the Cambodian floodplain resulting in overland flows to and from various reaches of the river is not simulated well at the moment. The flow records used here (drawn from a consistent set for convenience, even though they are inadequate for some purposes) do not permit better modeling, though other flow records are available.

The Mekong basin has considerable excess of rain over evapotranspiration, and about 37 % of the rain is ultimately discharged to the sea. Floods, particularly in the lower Mekong in Cambodia, are a major problem. Nevertheless, much of the drier part of the Mekong, particularly in NE Thailand, experiences seasonal water shortages during the dry season. Irrigation, primarily using water diverted from the rivers, is practiced throughout the lower basin, but is particularly important only in the delta region. A demonstration of the possible impacts of climate change using an assumed change in rainfall distribution, shows that with the expected shorter and more intense rainy season, and longer and more intense dry season, both floods and seasonal water shortages may be exacerbated.

8. REFERENCES

- ABS 2004. Water account Australia 2000-01. Canberra: Australian Bureau of Statistics.
- Chinvanno, S. 2004. Information for sustainable development in light of climate change in Mekong River basin. In: Proceedings of the Regional Conference on Digital GMS, ed. P. Haddawy, 108-115. Pathumthani, Thailand: GMSARN Secretariat, Asian Institute of Technology. http://203.159.5.16/digital_gms/Proceedings/A77_SUPPAKORN_CHINAVANNO.pdf (accessed December, 2006).
- Dai, A. and K. E. Trenberth 2003. New estimates of continental discharge and oceanic freshwater transport. Proceedings of the Symposium on Observing and Understanding the Variability of Water in Weather and Climate, 83rd Annual American Meteorological Society Meeting, Long Beach, CA, 1-18.
- Fujii, H., H. Garsdal, P. Ward, M. Ishii, K. Morishita, and T. Boivin 2003. Hydrological roles of the Cambodian floodplain of the Mekong River. *International Journal of River Basin Management* 1, 1-14.
- Hoanh, C. T., H. Guttnam, P. Droogers, and J. Aerts 2003. Water, climate, food and environment in the Mekong Basin in Southeast Asia – Final report. Colombo, Sri Lanka: International Water Management Institute, Mekong River Commission Secretariat, Institute of Environmental Studies. http://www.geo.vu.nl/~ivmadapt/downloads/Mekong_FinalReport.pdf (accessed December, 2006).

- IWMI 2006. Land use land cover (LULC) AVHRR – USGS 1992-1993: Mekong River basin. Colombo, Sri Lanka: Center of Remote Sensing and Geographic Information System, International Water Management Institute. <http://www.iwmidsp.org/iwmi/SearchData/ReadFolder.asp?fPath=/Dsp4/RS-GIS-Data/Riverbasin/Mekong/> (Accessed August, 2006).
- Johnston, R., P. Rowcroft, K. G. Hortle, and C. McAllister 2003. Integrating environmental values into resource allocation - the MRC's approach in the LMB. Paper presented at a workshop on integrating environmental impacts into water allocation models of the Mekong River basin, December 15, 2003 at the University of Economics in Ho Chi Minh City, Vietnam. http://cmsdata.iucn.org/downloads/07_water_values_in_the_mekong.pdf (accessed 20 February, 2009).
- Kirby, M., M. Mainuddin, M. D. Ahmad, P. Marchand, and L. Zhang 2006a. Water use account spreadsheets with examples of some major river basins. Paper presented at the 9th International River Symposium, September 3-6, 2006 in Brisbane, Australia.
- Kirby, M., M. Mainuddin, G. M. Podger, and L. Zhang 2006b. Basin water use accounting method with application to the Mekong Basin. Paper presented at the IHP international symposium on managing water supply for growing demand, October 16-17, 2006 in Bangkok, Thailand. Ed. S. Sethaputra and K. Promma. Jakarta: UNESCO.
- Kirby, M., M. Mainuddin, and J. Eastham 2010. Water-use accounts in CPWF basins: Model concepts and description. CPWF Working Paper BFP01. 21pp. Colombo, Sri Lanka: The CGIAR Challenge Program on Water and Food. http://www.waterandfood.org/fileadmin/CPWF_Documents/Documents/CPWF_Publications/CPWF_Working_Paper_BFP01.pdf
- Kite, G. 2001. Modelling the Mekong: Hydrological simulation for environmental impact studies. *Journal of Hydrology* 253, 1-13.
- Lenzen, M. 2004. Nature, preparation and use of water accounts in Australia. Technical Report 04/2. Melbourne: Cooperative Research Centre for Catchment Hydrology.
- Molden, D. 1997. Accounting for water use and productivity. SWIM Paper No 1. Colombo, Sri Lanka: International Water Management Institute.
- Molden, D., R. Sakthivadivel, and Z. Habib 2001. Basin-level use and productivity of water: Examples from South Asia. IWMI Research Report 49. Colombo, Sri Lanka: International Water Management Institute.
- Morishita, K., H. Garsdal, and T. Masumoto 2004. Hydrological monitoring system for the Cambodian floodplains. In: Proceedings of the 2nd Asia Pacific Association of Hydrology and Water Resources Conference 1, 191-199.
- MRC. 2005. Overview of the hydrology of the Mekong Basin. Vientiane: Mekong River Commission.
- Podger, G. M., R. E. Beecham, D. Blackmore, R. Stein, and C. Perry 2004. Modelled observations on development scenarios in the lower Mekong Basin: Mekong water resources assistance strategy. Vientiane: World Bank.

- Ringler, C. 2001. Optimal water allocation in the Mekong River basin. ZEF-Discussion Papers on Development Policy No. 38. Bonn, Germany: Centre for Development Research.
- Sivapalan, M., G. Bloschl, L. Zhang, and R. Vertessy 2003. Downward approach to hydrological prediction. *Hydrological Processes* 17, 2101-2111.
- Snidvongs, A., S. Choowaew, and S. Chinvano 2003. Impact of climate change on water and wetland resources in Mekong River basin: Directions for preparedness and action. Regional Centre Report No 12. Bangkok, Thailand: Southeast Asia START http://www.iucn.org/themes/climate/wl/documents/regional_waterstudies/southeast-asia-final.pdf (accessed December, 2006).
- Snidvongs, A., and S.-K. Teng 2006. Global international waters assessment, Mekong River. GIWA Regional Assessment 55. Kalmar, Sweden: University of Kalmar. http://www.unep.org/dewa/giwa/areas/reports/r55/giwa_regional_assessment_55.pdf (accessed 20 February, 2009).



Challenge Program on Water and Food

127, Sunil Mawatha, Pelwatte, Battaramulla, Sri Lanka.

Mailing Address: P. O. Box 2075, Colombo, Sri Lanka.

Tel: + +94 11 2 880 143 Fax +94 11 2 784 083

www.waterandfood.org