



Trade Analysis and Information System Long Time-Series Version (LTS TRAINS)*¹

Installation guide

***** You must have *administrative rights* on the Computer in order to install LTS TRAINS or any of its prerequisites.**

***** If your userid does not have *administrative rights*, and use another userid with the rights to install LTS TRAINS, please see at the end of this document “Accessing LTS TRAINS without administrative rights”)**

Prerequisites:

Before you can install the LTS TRAINS on your computer, your computer must have:

1. Windows XP, Service Pack 3 or higher
2. Microsoft .NET 4.0
3. Windows Installer 4.5
4. SQL Server (Express) 2008 R2

The above software are included in the **DVD Package**, or downloaded from the **LTS TRAINS sites**, or directly from the Microsoft website below

1. Windows XP, Service Pack 3

Download and install from:

¹ LTS TRAINS has been developed by United Nations Conference on Trade and Development (UNCTAD) in collaboration with International Monetary Funds (IMF) and with financial assistance from UK Department for International Development (DFID)

<http://www.microsoft.com/download/en/details.aspx?id=24>

or update your WINDOWS XP through the System updating

2. Installation of .NET Framework 4.0 Standalone

Download and install from:

<http://www.microsoft.com/download/en/confirmation.aspx?id=17718>

3. Installation of WINDOWS Installer 4.5

Download and install from:

<http://www.microsoft.com/download/en/details.aspx?id=8483>

4. Installation of SQL Server Express 2008 R2 Edition

Download and install from:

<http://www.microsoft.com/sqlserver/en/us/editions/express.aspx>

You will get the following screen. Click the appropriate

SQL Server | All Microsoft Sites | United States | Change | Search Microsoft | bing | Web

Microsoft SQL Server

Contact Us > | f | t | YouTube

Product Information | Solutions & Technologies | Editions | Get SQL Server | Support | Learning Center | Community | Partners | Future

Microsoft SQL Server Express Edition

Share this page

Easy to get. Free to use.

SQL Server Express is a free edition of SQL Server ideal for developing and powering desktop, web and small server applications. Download SQL Server 2008 R2 Express or try SQL Server Code Name "Denali" CTP3, which includes SQL Server Express LocalDB, a new lightweight deployment option for Express.

TOP EXPRESS FEATURES

- Same database engine as other versions of SQL Server.
- Supports 10 GB of storage per database.
- Compatible with all editions of SQL Server and SQL Azure.
- Backup and restore with ease.
- Offers reporting capabilities, full-text search, and spatial support.
- Designed to work with Visual Studio and ASP.NET.
- Available with a graphical management tool.

DOWNLOAD 2008 R2 32-BIT

DOWNLOAD 2008 R2 64-BIT

DOWNLOAD 2008 R2 32-BIT DATABASE W/TOOLS

DOWNLOAD 2008 R2 64-BIT DATABASE W/TOOLS

DOWNLOAD DENALI EXPRESS CTP3 (LOCALDB)

Usage Scenarios

- Quickly build and deploy your database solution.
- Build websites and web applications.
- Create small scale line-of-business applications.
- Redistribute with ISV applications.
- Learn database development and management.
- Download the free PowerPivot for Excel and create compelling analysis and reports.

Compare Editions
Figure out which edition is right for you.

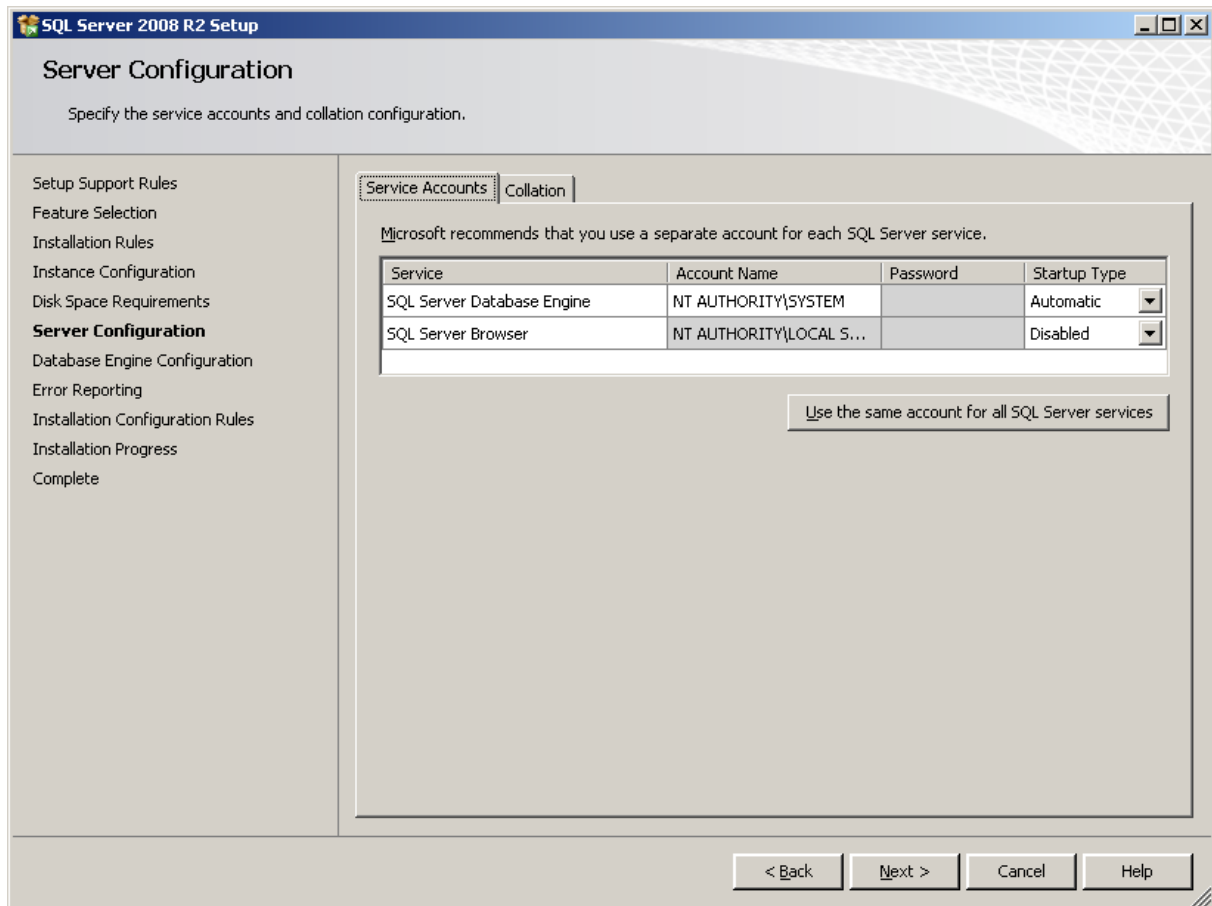
VS.

Compare Editions >

Download 32 BIT or 64 BIT version, depending on your computer. To find out which one you are running, here is how to check: <http://support.microsoft.com/kb/827218>

(Note: DVD Package and includes the 32 BIT version without tools)

To install, double-click the installed executable file, and follow the instruction by choosing default setting. Follow the instruction by choosing **“New installation”**, When you reach this panel (Server Configuration),



choose **NT AUTHORITY\SYSTEM** for the Account Name of the SQL Server Database Engine.

Installation of LTS TRAINS

(The two installation files of LTS TRAINS, **LtsTrainsSetup.msi (53 Mb)**, and **LTS-Trains-S1.zip (1 Gb)**, can be downloaded from the [LTS TRAINS website](#).)

1. Double-click **LtsTrainsSetup.msi** and follow the instruction. Unless you are sure to do otherwise, choose the default options.
2. Unzip the compressed LST TRAINS database, **LTS-Trains-S1.zip**, and place it (**LTS-Trains-S1.mdf**) inside the Databases folder created by the program in 1. above. If the default option is selected, the folder will reside in
C:\Program Files\Microsoft\Long Time-Series TRAINS\Databases

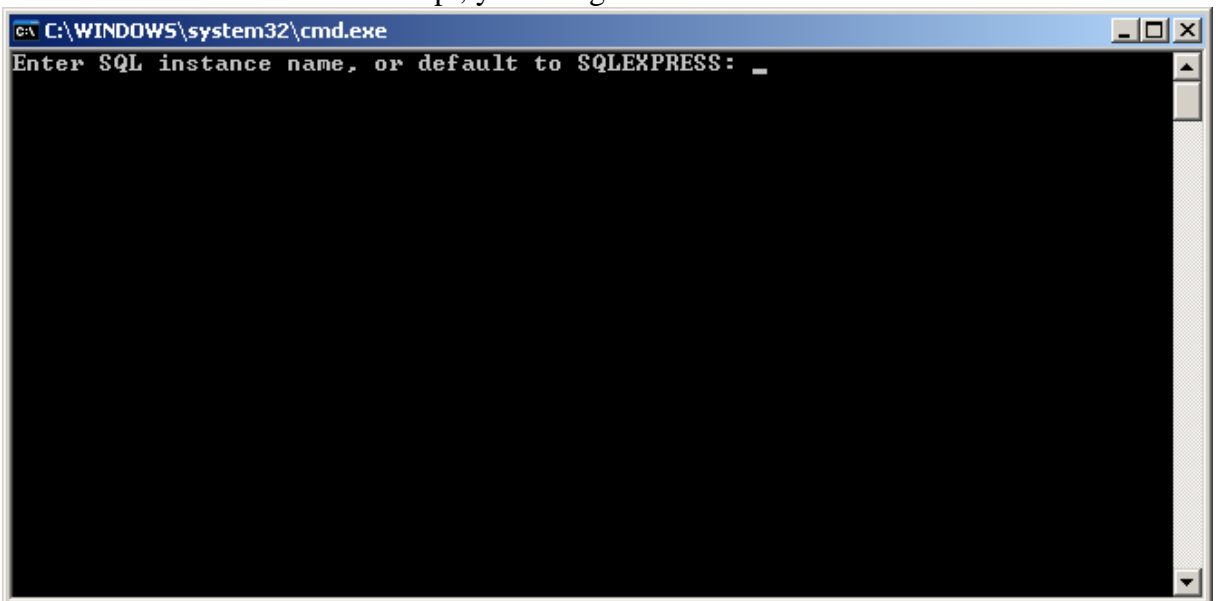
Note: If you do not have software to “unzip”, it is included in the **DVD package**, download form the [LTS TRAINS website](#) or *download and install from:*

<http://find.pcworld.com/61828>

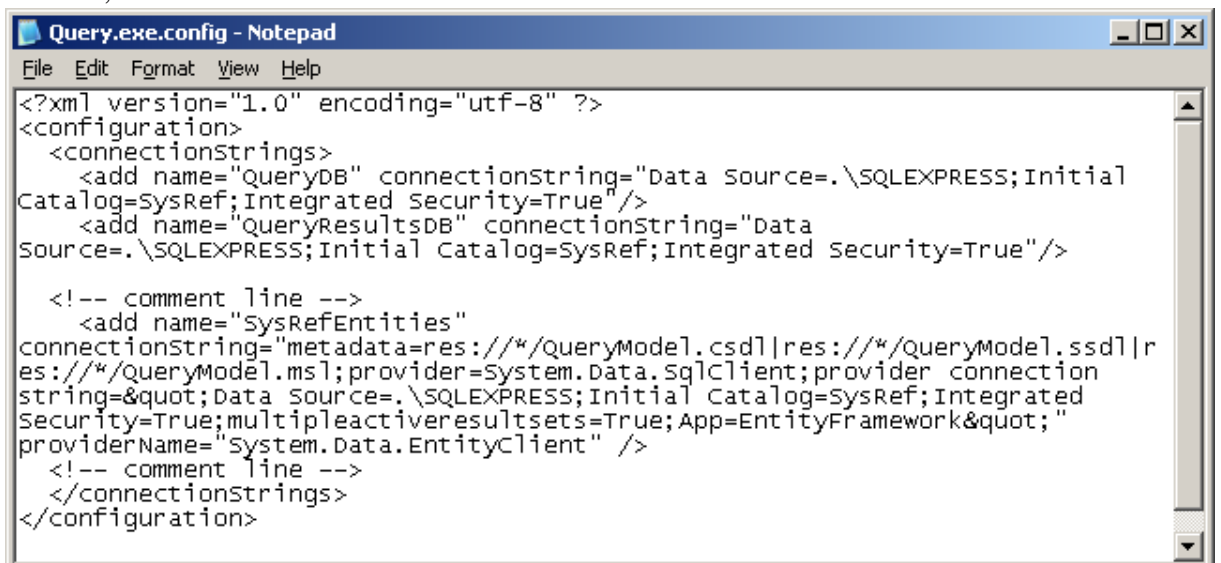
Accessing LTS TRAINS without administrative rights on your computer

If you installed LTS TRAINS using a computer user name other than yours, and your user name does not have the administrative rights, you must:

1. Install LTS TRAINS for “everyone”. This option comes at the very beginning of the installation process.
2. When completed, download a script from Microsoft website, <http://archive.msdn.microsoft.com/addselftosqlsysadmin/> The script, `addselftosqlsysadmin.cmd`, is also available in the DVD Package.
3. Double-click the downloaded script, you will get

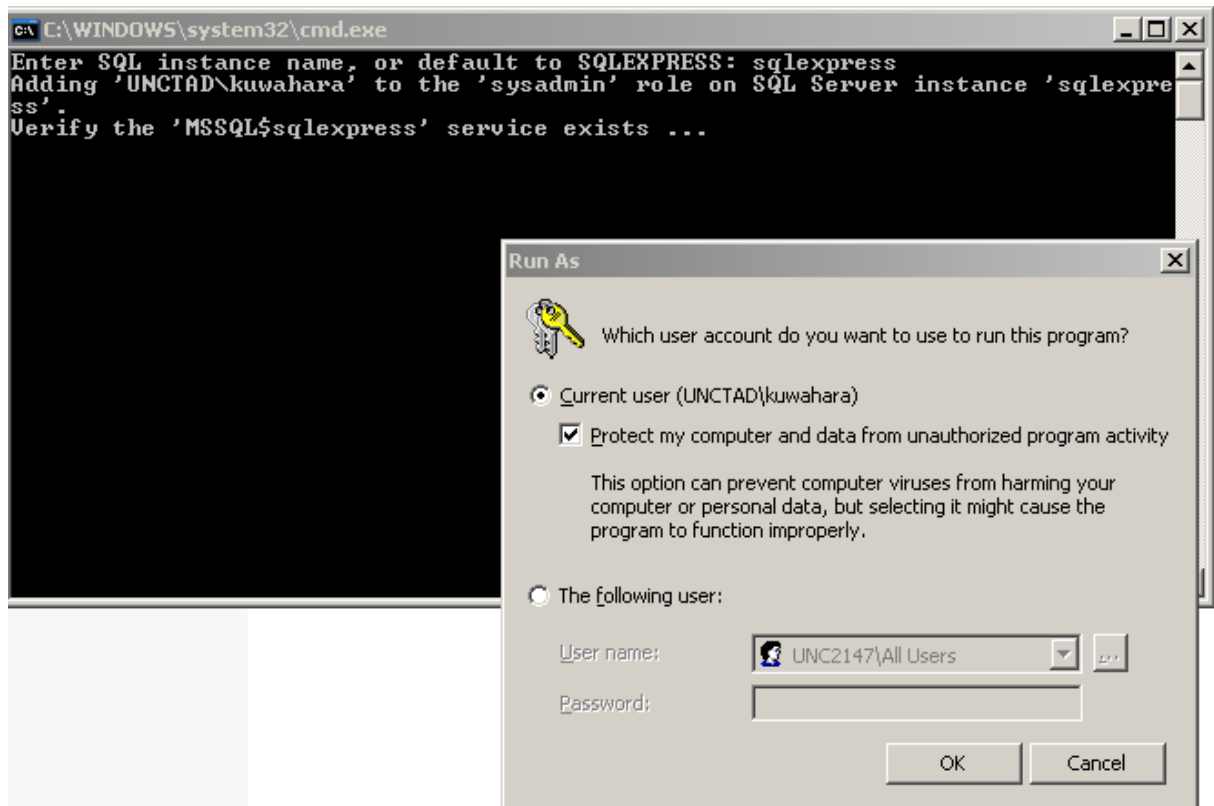


4. The SQL instance name is found in a file, `Query.exe.config`, the folder in which you installed your LTS TRAINS. If you installed it into a default folder, it is in `C:\Program Files\Microsoft\Long Time-Series Trains`. Open the file in Notepad, you will see,

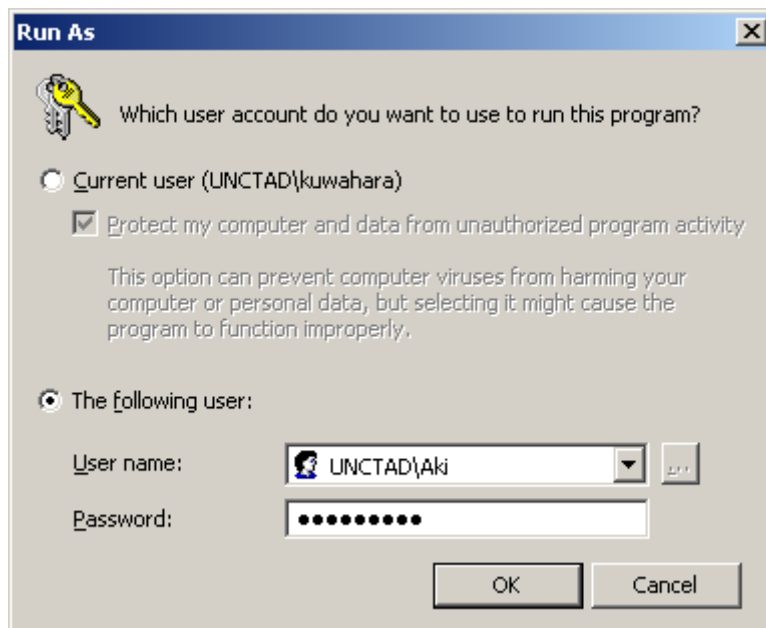


On the seventh line above, it reads: Source = .\SQLEXPRESS; In the above example, type “SQLEXPRESS” at the cursor. (i.e. enter the name that appears in between “.” and “;”).

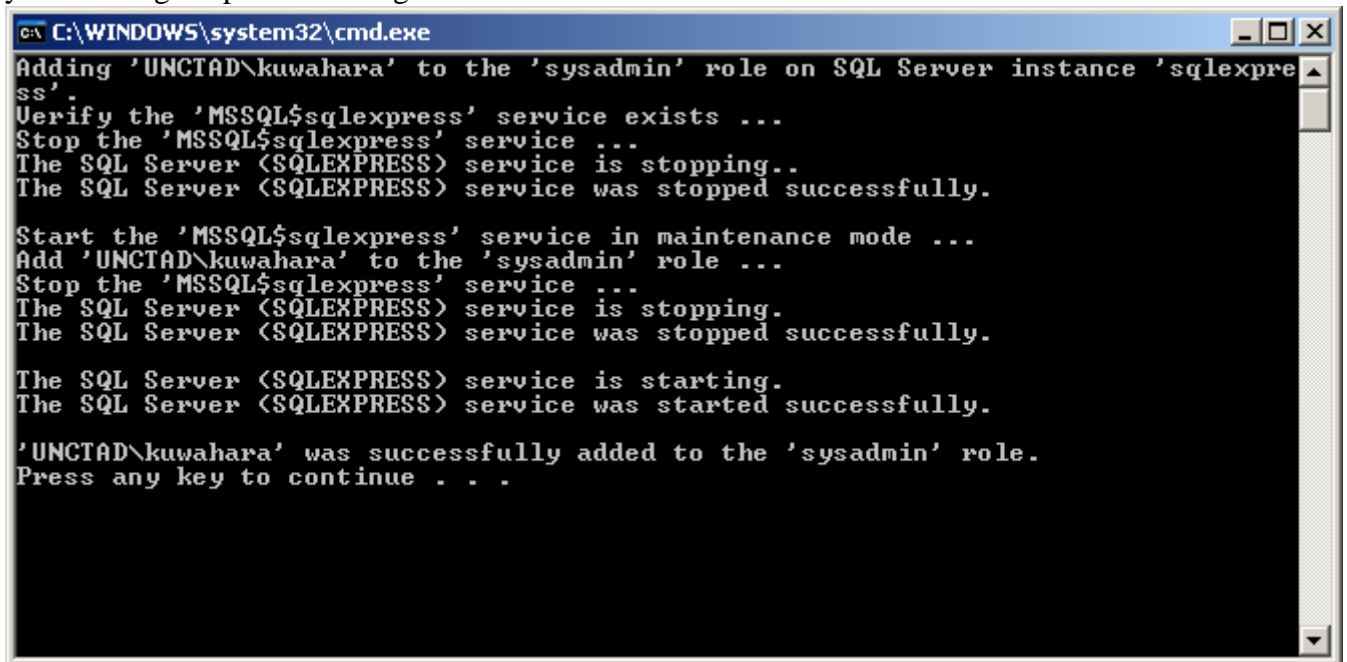
5. When you press ENTER, you will get;



You need to enter the User name and password of the administrator, with which you had installed LTS TRAINS as follows.



Clicking OK will stop the SQL Server Express 2008, register your non-administrative user to the SQL Server and restart the SQL Server. This way, you will be able to run LTS TRAINS without having the administrative rights on the Computer. At the end of the process, you should get a panel showing:



```
C:\WINDOWS\system32\cmd.exe
Adding 'UNCTAD\kuwahara' to the 'sysadmin' role on SQL Server instance 'sqlpre
ss'.
Verify the 'MSSQL$sql express' service exists ...
Stop the 'MSSQL$sql express' service ...
The SQL Server (SQLEXPRESS) service is stopping..
The SQL Server (SQLEXPRESS) service was stopped successfully.

Start the 'MSSQL$sql express' service in maintenance mode ...
Add 'UNCTAD\kuwahara' to the 'sysadmin' role ...
Stop the 'MSSQL$sql express' service ...
The SQL Server (SQLEXPRESS) service is stopping.
The SQL Server (SQLEXPRESS) service was stopped successfully.

The SQL Server (SQLEXPRESS) service is starting.
The SQL Server (SQLEXPRESS) service was started successfully.

'UNCTAD\kuwahara' was successfully added to the 'sysadmin' role.
Press any key to continue . . .
```

Note: On the above example, UNCTAD/Aki is the user name with Administrative rights and UNCTAD/Kuwahara is the one without.