

# On the share of inheritance in aggregate wealth Europe and the United States, 1900-2010

Facundo ALVAREDO

Paris School of Economics, INET at Oxford & CONICET

Bertrand GARBINTI

CREST and Paris School of Economics

Thomas PIKETTY

Paris School of Economics

October 29, 2015\*

## Abstract

This paper provides historical series on the evolution of the share of inherited wealth in aggregate private wealth in Europe (France, U.K., Germany, Sweden) and the United States over the 1900-2010 period. Until 1910, the inheritance share was very high in Europe (70-80%). It then fell abruptly following the 1914-1945 shocks, down to to about 30-40% during the 1950-1980 period, and it back to 50-60% around 2010 (and rising). The U.S. pattern also appears to be U-shaped, albeit less marked, and with significant uncertainty regarding recent trends, due to data limitations. We discuss possible interpretations for these long run patterns.

---

\*Facundo Alvarado: [alvarado@pse.ens.fr](mailto:alvarado@pse.ens.fr); Bertrand Garbinti: [bertrand.garbinti@ensae.com](mailto:bertrand.garbinti@ensae.com); Thomas Piketty: [piketty@pse.ens.fr](mailto:piketty@pse.ens.fr). This research is supplemented by an on-line data appendix.

# 1 Introduction

There exists substantial uncertainty regarding the relative magnitude of inherited wealth and self-made wealth in aggregate wealth accumulation, and how this changes over time and across countries. The 1980s saw a famous controversy between Modigliani (a strong life-cycle advocate, who argued that the share of inherited wealth was as little as 20-30% of US aggregate wealth) and Kotlikoff-Summers (who instead argued that the inheritance share was as large as 80%, if not larger). Particularly confusing was the fact that both sides claimed to look at the same data, namely U.S. data from the 1960s-1970s.<sup>1</sup> The disagreement came both from the lack of adequate long-run series on inheritance, and from definitional issues.

In this paper, we attempt to provide a clearer conceptual framework as well as better data series in order to estimate the evolution of the inheritance share in aggregate wealth in Europe and the U.S. over the 1900-2010 period. We should stress at the onset that although our estimates represent an improvement upon the previous literature, they should still be viewed as tentative and exploratory. The broad patterns and orders of magnitude that we find appear to be robust, but one would need to collect additional historical data from inheritance and probates archives in order to be able to better understand some of the finer evolutions as well as the similarities and differences between countries.

Our main findings are summarized in figure 1. The inheritance share in aggregate wealth accumulation was very high in Europe during the 19<sup>th</sup> century and until World War I (over 70% around 1900-1910, and possibly even more than 80% in some countries). It then fell abruptly following the 1914-1945 capital shocks (destructions, inflation, taxation). Around 1970-1980 the share of inherited wealth was less than 40%. It has been rising substantially in the recent decades and it seems to be about 50-60% in 2000-2010 (and rising).

The U.S. pattern also appears to be U-shaped, albeit less marked. The inheritance share in aggregate wealth accumulation was lower in the U.S. than in Europe in the 19<sup>th</sup> century and at the eve of World War I (less than 60% in the U.S., vs. over 70% in Europe). This certainly reflects a ‘New world’ effect (the migrants usually did not come with much inheritance, and had to save on their own). However the U.S. inheritance share was rising fast in the late 19<sup>th</sup> and early 20<sup>th</sup> century. The shocks caused by the 1930s and World War II led to a downturn, but

---

<sup>1</sup>See Kotlikoff and Summers (1981, 1988) and Modigliani (1986, 1988). Modigliani’s theory of lifecycle saving was first formulated in the 1950s-60s; see the references given in Modigliani (1986).

much less pronounced than in Europe, so that the U.S. inheritance share became higher than in Europe by mid-20<sup>th</sup> century. In recent decades, the inheritance share seems to have increased substantially in the U.S. However there is significant uncertainty about the exact levels and trends, due in particular to the limitations of U.S. estate tax data (which covers only a small fraction of all decedents, so that it cannot be used to produce aggregate series).

We should also emphasize that there are significant variations within Europe. For simplicity, we define ‘Europe’ in figure 1 as the average of France, Germany and Britain.<sup>2</sup> We will later see that France and Germany follow a particularly marked U-shaped pattern, while the U.K. pattern is in some ways closer to the U.S. evolution.

In brief, our general conclusion is that there are substantial variations in the inheritance share over time and across countries, and that one should be careful not to interpret averages over one or two decades as steady-state outcomes. Wealth accumulation takes time: it spans over several generations, so it is important to take a very long run perspective on these issues. Modigliani’s conclusions – with a large majority of wealth coming from life-cycle savings – might have been right for the immediate postwar period (though somewhat exaggerated). But Kotlikoff-Summers’ estimates – with inheritance accounting for a significant majority of wealth – appear to be closer to what we generally observe in the long-run, both in the 19<sup>th</sup> and early 20<sup>th</sup> centuries, and in the late 20<sup>th</sup> and early 21<sup>st</sup> centuries. Regarding the very long-run, we stress that there are many different possible steady-state levels for the inheritance share. As we shall see, there are several forces which tend to imply that low-growth societies also have higher inheritance shares. But other effects can go in the other direction. Depending on the evolution of demographic parameters, social tastes for leaving bequests, the generosity of public pensions systems, etc., one can observe very different equilibrium levels for the inheritance share in different countries.

The rest of the paper is organized as follows. In section 2, we discuss the concepts, methods and data sources that we use in order to estimate the share of inherited wealth in aggregate wealth accumulation. We propose a simplified definition of the inheritance share (based upon the comparison of inheritance flows and saving flows). This can be implemented with much less data than a full-fledged micro-data-based definition. The resulting estimates should be considered as lower bound estimates. However they appear to track down relatively well the

---

<sup>2</sup>Looking at GDP-weighted averages rather than simple arithmetic averages, or including Sweden in the European average, virtually does not affect the ‘Europe’ series. See the on-line appendix.

more sophisticated estimates. In section 3, we present our main results, starting with European countries, and then moving to the U.S. case. In section 4, we discuss open issues and prospects for future research.

## 2 Concepts, data sources and methods

### 2.1 Basic notions and definitions

The most natural way to define the share of inherited wealth in aggregate wealth is to cumulate past inheritance flows. That is, assume that we observe the aggregate wealth stock  $W_t$  at time  $t$  in a given country, and that we would like to define and estimate the aggregate inherited wealth stock  $W_{Bt} \leq W_t$  (and conversely aggregate self-made wealth, which we simply define as  $W_{St} = W_t - W_{Bt}$ ). Assume that we observe the annual flow of inheritance  $B_s$  that occurred in any year  $s \leq t$ . At first sight, it might seem natural to define the stock of inherited wealth  $W_{Bt}$  as the sum of past inheritance flows:

$$W_{Bt} = \int_{s \leq t} B_s \cdot ds$$

However, there are several practical and conceptual difficulties with this ambiguous definition, which need to be addressed before the formula can be applied to actual data. First, it is critical to include in this sum not only past bequest flows  $B_s$  (wealth transmissions at death) but also inter vivos gift flows  $V_s$  (wealth transmissions inter vivos).<sup>3</sup> That is, one should define  $W_{Bt}$  as  $W_{Bt} = \int_{s \leq t} B_s^* \cdot ds$ , with  $B_s^* = B_s + V_s$ .

Alternatively, if one cannot observe directly the gift flow  $V_s$ , one should replace the observed bequest flow  $B_s$  by some grossed up level  $B_s^* = (1 + v_s) \cdot B_s$ , where  $v_s = V_s/B_s$  is an estimate of the gift/bequest flow ratio. In countries where adequate data is available, the gift/bequest ratio is at least 10-20%, and is often higher than 50%, especially in the recent period.<sup>4</sup> It is thus critical to include gifts in one way or another. In countries where fiscal data on gifts is insufficient, one should at least try to estimate a gross-up factor  $1 + v_s$  using surveys (which often suffers from severe downward biases) and harder administrative evidence from other countries.

---

<sup>3</sup>Otherwise a country where all individuals give away their wealth to their children and relatives a few months before they die would appear like a country with no inherited wealth.

<sup>4</sup>See below. Usually one only includes formal, monetary capital gifts, and one ignores informal presents and in-kind gifts. In particular in-kind gifts made to minors living with their parents (i.e. the fact that minor children are usually catered by their parents) are generally left aside.

Next, in order to properly apply this definition, one should only take into account the fraction of the aggregate inheritance flow  $B_{st} \leq B_s$  that was received at time  $s$  by individuals who are still alive at time  $t$ . The problem is that doing so properly requires very detailed individual-level information. At any time  $t$ , there are always individuals who received inheritance a very long time ago (say, 60 years ago) but who are still alive (because they inherited at a very young age and/or are enjoying a very long life). Conversely, a fraction of the inheritance flow received a short time ago (say, 10 years ago) should not be counted (because the relevant inheritors are already dead, e.g., they inherited at an old age or died young). In practice, however, such unusual events tend to balance each other, so that a standard simplifying assumption is to cumulate the full inheritance flows observed the previous  $H$  years, where  $H$  is the average generation length, i.e. the average age at which parents have children (typically  $H = 30$  years). Therefore we obtain the following simplified definition:

$$W_{Bt} = \int_{t-30 \leq s \leq t} (1 + v_s) \cdot B_s \cdot ds$$

## 2.2 The Kotlikoff-Summers-Modigliani controversy

Assume now that these two difficulties can be addressed (i.e., assume that we can properly estimate the gross up factor  $1 + v_s$  and the average generation length  $H$ ). There are more substantial difficulties ahead. First, in order to properly compute  $W_{Bt}$ , one needs to be able to observe inheritance flows  $B_s^*$  over a relatively long time period (typically, the previous 30 years). In the famous Kotlikoff-Summers-Modigliani (KSM) controversy, both Kotlikoff-Summers (1981, 1988) and Modigliani (1986, 1988) used estimates of the US inheritance flow for only one year (and a relatively ancient year: 1962). They simply assumed that this estimate could be used for other years. Namely, they assumed that the inheritance flow-national income ratio (which we note  $b_{ys} = B_s^*/Y_s$ ) is stable over time. One problem with this assumption is that it might not be verified. As we shall see below, extensive historical data on inheritances that was recently collected for a number of European countries show that the  $b_{ys}$  ratio has changed tremendously over the past two centuries, from about 20-25% of national income in the 19<sup>th</sup> and early 20<sup>th</sup> centuries, down to less than 5% at mid-20<sup>th</sup> century, back to about 10-15% in the early 21<sup>st</sup> century. So one cannot simply use one year of data and assume that we are in a steady-state: one needs long-run time series on the inheritance flow in order to estimate the aggregate stock

of inherited wealth.

Next, one needs to decide the extent to which past inheritance flows need to be upgraded or capitalized. This is the main source of disagreement and confusion in the KSM controversy.

Modigliani (1986, 1988) chooses zero capitalization. That is, he simply defines the stock of inherited wealth  $W_{Bt}^M$  as the raw sum of past inheritance flows with no adjustment whatsoever (except for the GDP price index):

$$W_{Bt}^M = \int_{t-30 \leq s \leq t} B_s^* \cdot ds$$

For simplicity, assume that we look at a country with fixed inheritance flow-national income ratio  $b_y = B_s^*/Y_s$ , growth rate  $g$  (so that  $Y_t = Y_s \cdot e^{g(t-s)}$ ), generation length  $H$ , and aggregate private wealth-national income ratio  $\beta = W_t/Y_t$ . Then, according to the Modigliani definition, the steady-state formulas for the stock of inherited wealth relative to national income  $W_{Bt}^M/Y_t$  and for the share of inherited wealth  $\varphi_t^M = W_{Bt}^M/W_t$  are given by:

$$W_{Bt}^M/Y_t = \frac{1}{Y_t} \int_{t-30 \leq s \leq t} B_s^* \cdot ds = \frac{1 - e^{-gH}}{g} \cdot b_y$$

$$\varphi_t^M = W_{Bt}^M/W_t = \frac{1 - e^{-gH}}{g} \cdot \frac{b_y}{\beta}$$

In contrast, Kotlikoff and Summers (1981, 1988) choose to capitalize past inheritance flows by using the economy's average rate of return to wealth (assuming it is constant and equal to  $r$ ). Following the Kotlikoff-Summers definition, the steady-state formulas for the stock of inherited wealth relative to national income  $W_{Bt}^{KS}/Y_t$  and for the share of inherited wealth  $\varphi_t^{KS} = W_{Bt}^{KS}/W_t$  are given by:

$$W_{Bt}^{KS}/Y_t = \frac{1}{Y_t} \int_{t-30 \leq s \leq t} e^{r(t-s)} \cdot B_s^* \cdot ds = \frac{e^{(r-g)H} - 1}{r - g} \cdot b_y$$

$$\varphi_t^{KS} = W_{Bt}^{KS}/W_t = \frac{e^{(r-g)H} - 1}{r - g} \cdot \frac{b_y}{\beta}$$

In the special case where growth rates and rates of return are negligible (i.e., infinitely close to zero), then both definitions coincide. That is, if  $g \simeq 0$  and  $r - g \simeq 0$ , then  $(1 - e^{-gH})/g = (e^{(r-g)H} - 1)/(r - g) = H$ , so that  $W_{Bt}^M/Y_t = W_{Bt}^{KS}/Y_t = Hb_y$  and  $\varphi_t^M = \varphi_t^{KS} = Hb_y/\beta$ .

Thus, in case growth and capitalization effects can be neglected, one simply needs to multiply the annual inheritance flow by generation length. If the annual inheritance flow is equal to  $b_y = 10\%$  of national income, and generation length is equal to  $H = 30$  years, then the stock of inherited wealth is equal to  $W_{Bt}^M = W_{Bt}^{KS} = 300\%$  of national income according to both definitions. In case aggregate wealth amounts to  $\beta = 400\%$  of national income, then the inheritance share is equal to  $\varphi_t^M = \varphi_t^{KS} = 75\%$  of aggregate wealth.

However, in the general case where  $g$  and  $r - g$  are significantly different from zero, the two definitions can lead to widely different conclusions. For instance, with  $g = 2\%$ ,  $r = 4\%$  and  $H = 30$ , we have the following capitalization factors:  $(1 - e^{-gH})/(g \cdot H) = 0.75$  and  $(e^{(r-g)H} - 1)/((r - g) \cdot H) = 1.37$ . In this example, for a given inheritance flow  $b_y = 10\%$  and aggregate wealth-income ratio  $\beta = 400\%$ , we obtain  $\varphi_t^M = 56\%$  and  $\varphi_t^{KS} = 103\%$ . About half of wealth comes from inheritance according to the Modigliani definition, and all of it according to the Kotlikoff-Summers definition.

This is the main reason why Modigliani and Kotlikoff-Summers disagree so much about the inheritance share. They both use the same (relatively fragile) estimate for the US  $b_y$  in 1962. But Modigliani does not capitalize past inheritance flows and concludes that the inheritance share is as low as 20-30%. Kotlikoff-Summers do capitalize the same flows and conclude that the inheritance share is as large as 80-90% (or even larger than 100% in some specifications).<sup>5</sup>

### 2.3 The limitations of KSM definitions

Which of the two definitions is most justified? In our view, both are problematic. It is wholly inappropriate not to capitalize at all past inheritance flows. But full capitalization is also inadequate.

The key problem with the KSM representative-agent approach is that it fails to recognize that the wealth accumulation process always involves several different kinds of people and wealth trajectories. In particular, in every economy, there are inheritors (people who typically consume part of the return to their inherited wealth), and there are savers (people who do not inherit much but do accumulate wealth through labor income savings). This is an important feature of the real world that must be taken into account for a proper understanding of the aggregate

---

<sup>5</sup>Both sides also disagree somewhat about the measurement of  $b_y$ , but the main source of divergence really comes from this capitalization effect. In effect, Modigliani favors a  $b_y$  ratio around 5-6%, while Kotlikoff-Summers find it more realistic to use a  $b_y$  ratio around 7-8%. Given the data sources they use, it is likely that both sides tend to somewhat underestimate the true ratio. See section 3 below.

wealth accumulation process.

The Modigliani definition is particularly problematic, since it simply fails to recognize that inherited wealth produces flow returns. This mechanically leads to artificially low numbers for the inheritance share  $\varphi_t^M$  (as low as 20%-40%), and to artificially high numbers for the lifecycle share in wealth accumulation, which Modigliani defines as  $1 - \varphi_t^M$  (up to 60%-80%). As Blinder (1988) argues: “a Rockefeller with zero lifetime labor income and consuming only part of his inherited wealth income would appear to be a lifecycle saver in Modigliani’s definition, which seems weird to me.” One can easily construct illustrative examples of economies where all wealth comes from inheritance (with dynasties of the sort described by Blinder), but where Modigliani would still find an inheritance share well below 50%, simply because of his definition. This makes little sense.<sup>6</sup>

The Kotlikoff-Summers definition is conceptually more satisfactory than Modigliani’s. But it suffers from the opposite drawback, in the sense that it mechanically leads to artificially high numbers for the inheritance share  $\varphi_t^{KS}$ . In particular,  $\varphi_t^{KS}$  can easily be larger than 100%, even though there are lifecycle savers and self-made wealth accumulators in the economy, and a significant fraction of aggregate wealth accumulation comes from them. This will arise whenever the cumulated return to inherited wealth consumed by inheritors exceeds the savers’ wealth accumulation from their labor savings. In the real world, this condition seems to hold not only in prototype rentier societies such as Paris during the late 19<sup>th</sup> and early 20<sup>th</sup> centuries (see Piketty, Postel-Vinay and Rosenthal, 2014), but also in countries and time periods when aggregate inheritance flow are relatively low. For instance, aggregate French series show that the capitalized bequest share  $\varphi_t^{KS}$  has been larger than 100% throughout the 20th century, including in the 1950s-1970s, a period where a very significant amount of new self-made wealth was accumulated (Piketty, 2011).

In sum: the Modigliani definition leads to estimates of the inheritance share that are artificially close to 0%, while the Kotlikoff-Summers leads to inheritance shares that tend to be structurally above 100%. Neither of them offers an adequate way to look at the data.

---

<sup>6</sup>It is worth stressing that the return to inherited wealth (and the possibility to save and accumulate more wealth out of the return to inherited wealth) is a highly relevant economic issue not only for high-wealth dynasties of the sort referred to by Blinder, but also for middle-wealth dynasties. For instance, it is easier to save if one has inherited a house and has no rent to pay. An inheritor saving less than the rental value of his inherited home would be described as a lifecycle saver according to Modigliani’s definition, which again seems odd.



## 2.4 The PPVR definition

In an ideal world with perfect data, the conceptually consistent way to define the share of inherited wealth in aggregate wealth is the following. It has first been formalized and applied to Parisian wealth data by Piketty, Postel-Vinay and Rosenthal (2014), so we refer to it as the PPVR definition.

The basic idea is to split the population into two groups. First, there are “inheritors” (or “rentiers”), whose assets are worth less than the capitalized value of the wealth they inherited (over time they consume more than their labor income). The second group is composed of “savers” (or “self-made individuals”), whose assets are worth more than the capitalized value of the wealth they inherited (they consume less than their labor income). Aggregate inherited wealth can then be defined as the sum of inheritors’ wealth plus the inherited fraction of savers’ wealth, and self-made wealth as the non-inherited fraction of savers’ wealth. By construction, inherited and self-made wealth are less than 100% and sum to aggregate wealth, which is certainly a desirable property. Although the definition is fairly straightforward, it differs considerably from the standard KSM definitions based upon representative agent models. The PPVR definition is conceptually more consistent, and provides a more meaningful way to look at the data and to analyze the structure of wealth accumulation processes. In effect, it amounts to defining inherited wealth at the individual level as the minimum between current wealth and capitalized inheritance.

More precisely, consider an economy with population  $N_t$  at time  $t$ . Take a given individual  $i$  with wealth  $w_{ti}$  at time  $t$ . Assume he or she received bequest  $b_{ti}^0$  at time  $t_i < t$ . Note  $b_{ti}^* = b_{ti}^0 \cdot e^{r(t-t_i)}$  the capitalized value of  $b_{ti}^0$  at time  $t$  (where  $e^{r(t-t_i)}$  is the cumulated rate of return between time  $t_i$  and time  $t$ ). Individual  $i$  is said to be an “inheritor” (or a “rentier”) if  $w_{ti} < b_{ti}^*$  and a “saver” (or a “self-made individual”) if  $w_{ti} \geq b_{ti}^*$ . We define the set of inheritors as  $N_t^r = \{i \text{ s.t. } w_{ti} < b_{ti}^*\}$  and the set of savers as  $N_t^s = \{i \text{ s.t. } w_{ti} \geq b_{ti}^*\}$ .

We note  $\rho_t = N_t^r/N_t$  and  $1 - \rho_t = N_t^s/N_t$  the corresponding population shares of inheritors and savers;  $w_t^r = E(w_{ti}|w_{ti} < b_{ti}^*)$  and  $w_t^s = E(w_{ti}|w_{ti} \geq b_{ti}^*)$  the average wealth levels of both groups;  $b_t^{r*} = E(b_{ti}^*|w_{ti} < b_{ti}^*)$  and  $b_t^{s*} = E(b_{ti}^*|w_{ti} \geq b_{ti}^*)$  the levels of their average capitalized bequest; and  $\pi_t = \rho_t \cdot w_t^r/w_t$  and  $1 - \pi_t = (1 - \rho_t) \cdot w_t^s/w_t$  the share of inheritors and savers in aggregate wealth.

We define the total share  $\varphi_t$  of inherited wealth in aggregate wealth as the sum of inheritors’

wealth plus the inherited fraction of savers' wealth, and the share  $1 - \varphi_t$  of self-made wealth as the non-inherited fraction of savers' wealth:

$$\begin{aligned}\varphi_t &= [\rho_t \cdot w_t^r + (1 - \rho_t) \cdot b_t^{s*}] / w_t = \pi_t + (1 - \rho_t) \cdot b_t^{s*} / w_t \\ 1 - \varphi_t &= (1 - \rho_t) \cdot (w_t^s - b_t^{s*}) / w_t = 1 - \pi_t - (1 - \rho_t) \cdot b_t^{s*} / w_t\end{aligned}$$

The downside of this definition is that it is more demanding in terms of data availability. While Modigliani and Kotlikoff-Summers could compute inheritance shares in aggregate wealth by using aggregate data only, the PPVR definition requires micro data. Namely, we need data on the joint distribution  $G_t(w_{ti}, b_{ti}^*)$  of current wealth  $w_{ti}$  and capitalized inherited wealth  $b_{ti}^*$  in order to compute  $\rho_t$ ,  $\pi_t$  and  $\varphi_t$ . This does require high-quality, individual-level data on wealth and inheritance over two generations, which is often difficult to obtain. It is worth stressing, however, that we do not need to know anything about the individual labor income or consumption paths  $(y_{Lsi}, c_{si}, s < t)$  followed by individual  $i$  up to the time of observation.<sup>7</sup>

For plausible joint distributions  $G_t(w_{ti}, b_{ti}^*)$ , the PPVR inheritance share  $\varphi_t$  will typically fall somewhere in the interval  $[\varphi_t^M, \varphi_t^{KS}]$ . There is, however, no theoretical reason why it should be so in general. Imagine for instance an economy where inheritors consume their bequests the very day they receive it, and never save afterwards, so that wealth accumulation entirely comes from the savers, who never received any bequest (or negligible amounts), and who patiently accumulate savings from their labor income. Then with our definition  $\varphi_t = 0\%$ : in this economy, 100% of wealth accumulation comes from savings, and nothing at all comes from inheritance. However with the Modigliani and Kotlikoff-Summers definitions, the inheritance shares  $\varphi_t^M$  and  $\varphi_t^{KS}$  could be arbitrarily large.

## 2.5 A simplified definition: inheritance flows vs. saving flows

When available micro data is not sufficient to apply the PPVR definition, one can also use a simplified, approximate definition based upon the comparison between inheritance flows and

---

<sup>7</sup>Of course more data are better. If we also have (or estimate) labor income or consumption paths, then one can compute lifetime individual savings rate  $s_{Bti}$ , i.e. the share of lifetime resources that was not consumed up to time  $t$ :  $s_{Bti} = w_{ti} / (b_{ti}^* + y_{Lti}^*) = 1 - c_{ti}^* / (b_{ti}^* + y_{Lti}^*)$ , with  $y_{Lti}^* = \int_{s < t} y_{Lsi} e^{r(t-s)} ds =$  capitalized value at time  $t$  of past labor income flows, and  $c_{ti}^* = \int_{s < t} c_{si} e^{r(t-s)} ds =$  capitalized value at time  $t$  of past consumption flows. By definition, inheritors are individuals who consumed more than their labor income (i.e.  $w_{ti} < b_{ti}^* \leftrightarrow c_{ti}^* > y_{Lti}^*$ ), while savers are individuals who consumed less than their labor income (i.e.  $w_{ti} \geq b_{ti}^* \leftrightarrow c_{ti}^* \leq y_{Lti}^*$ ). But the point is that we only need to observe an individual's wealth ( $w_{ti}$ ) and capitalized inheritance ( $b_{ti}^*$ ) in order to determine whether he or she is an inheritor or a saver, and in order to compute the share of inherited wealth.

saving flows.

Assume that all we have is macro data on inheritance flows  $b_{yt} = B_t/Y_t$  and savings flows  $s_t = S_t/Y_t$ . Suppose for simplicity that both flows are constant over time:  $b_{yt} = b_y$  and  $s_t = s$ . We want to estimate the share  $\varphi = W_B/W$  of inherited wealth in aggregate wealth. The difficulty is that we typically do not know which part of the aggregate saving rate  $s$  comes from the return to inherited wealth, and which part comes from labor income (or from the return to past savings). Ideally, one would like to distinguish between the savings of inheritors and savers (defined along the lines defined above), but this requires micro data over two generations. In the absence of such data, a natural starting point would be to assume that the propensity to save is on average the same whatever the income sources. That is, a fraction  $\varphi \cdot \alpha$  of the saving rate  $s$  should be attributed to the return to inherited wealth, and a fraction  $1 - \alpha + (1 - \varphi) \cdot \alpha$  should be attributed to labor income (and to the return to past savings), where  $\alpha = Y_K/Y$  is the capital share in national income and  $1 - \alpha = Y_L/Y$  is the labor share. Assuming again that we are in steady-state, we obtain the following simplified formula for the share of inherited wealth in aggregate wealth:

$$\varphi = \frac{b_y + \varphi \cdot \alpha \cdot s}{b_y + s}$$

$$\text{I.e., } \varphi = \frac{b_y}{b_y + (1 - \alpha) \cdot s}$$

Intuitively, this formula simply compares the size of the inheritance and saving flows. Since all wealth must originate from one of the two flows, it is the most natural way to estimate the share of inherited wealth in total wealth.<sup>8</sup>

There are a number of caveats with this simplified formula. First, real-world economies are generally out of steady-state, so it is important to compute average values of  $b_y$ ,  $s$  and  $\alpha$  over relatively long periods of time (typically over the past  $H$  years, with  $H = 30$  years). If one has time-series estimates of the inheritance flow  $b_{ys}$ , capital share  $\alpha_s$  and saving rate  $s_s$  then one can use the following full formula, which capitalizes past inheritance and savings flows at rate  $r - g$ :

---

<sup>8</sup>Similar formulas based upon the comparison of inheritance and saving flows have been used by De Long (2003) and Davies et al (2012, p.123-124). One important difference is that these authors do not take into account the fact that the saving flow partly comes from the return to inherited wealth. See the discussion in section 4 below.

$$\varphi = \frac{\int_{t-H \leq s \leq t} e^{(r-g)(t-s)} \cdot b_{ys} \cdot ds}{\int_{t-H \leq s \leq t} e^{(r-g)(t-s)} \cdot (b_{ys} + (1 - \alpha_s) \cdot s_s) \cdot ds}$$

With constant flows, the full formula boils down to  $\varphi = \frac{b_y}{b_y + (1 - \alpha) \cdot s}$ .

Second, one should bear in mind that the simplified formula  $\varphi = b_y / (b_y + (1 - \alpha) \cdot s)$  is an approximate formula. In general, as we show below, it tends to under-estimate the true share of inheritance, as computed from micro data using the PPVR definition. The reason is that individuals who only have labor income tend to save less (in proportion to their total income) than those who have large inherited wealth and capital income, which in turns seems to be related to the fact that wealth (and particularly inherited wealth) is more concentrated than labor income.

On the positive side, simplified estimates of  $\varphi$  seem to follow micro-based estimates relatively closely (much more closely than KSM estimates, which are either far too small or far too large), and they are much less demanding in terms of data. One only needs to estimate macro flows. Another key advantage of the simplified definition over KSM definitions is that it does not depend upon the sensitive choice of the rate of return or the rate of capital gains or losses. Whatever these rates might be, they should apply equally to inherited and self-made wealth (at least as a first approximation), so one can simply compare inheritance and saving flows.

## 2.6 Estimating the inheritance flow-national income ratio $b_{yt}$

In order to apply the simplified definition of the inheritance share  $\varphi = b_y / (b_y + (1 - \alpha) \cdot s)$ , we need long-run macroeconomic series on the private saving rate  $s$  and the capital share  $\alpha$ , which are relatively easy to find. The more complicated part is usually to estimate the inheritance flow-national income ratio  $b_{yt}$ . Whenever possible, we attempt to provide two independent measures of the inheritance flow. The first, what we call the fiscal flow, uses bequest and gift tax data and makes allowances for tax-exempt assets such as life insurance. The second measure, what we call the economic flow, combines estimates of private wealth  $W_t$ , mortality tables and observed age-wealth profile, using the following accounting equation:

$$B_t^* = (1 + v_t) \cdot \mu_t \cdot m_t \cdot W_t$$

Where:  $m_t$  = mortality rate (number of adult decedents divided by total adult population)

$\mu_t$  = ratio between average adult wealth at death and average adult wealth for the entire population

$v_t = V_t/B_t$  = estimate of the gift/bequest flow ratio

The gap between the fiscal and economic flows can be interpreted as capturing tax evasion and other measurement errors. As we shall see below in the case of France, the gap appears to be approximately constant over time and relatively small, so that the two series deliver consistent long-run patterns. Unfortunately, we cannot make this comparison for all countries, due to data limitations. In particular, the U.S. estate tax data cannot be used to compute the aggregate inheritance flow, because only a very small fraction of all decedents is subject to federal estate tax and is included in estate tax data (note that in France and in a number of European countries, only a minority of the population is subject to inheritance tax, but everybody is covered by the statistics). So for the U.S. we will only be able to compute economic flow series.

The economic flow series allow – by construction – for a straightforward decomposition of the various effects at play in the evolution of  $b_{yt}$ . In the above equation, dividing both terms by  $Y_t$  we get:

$$b_{yt} = B_t^*/Y_t = (1 + v_t) \cdot \mu_t \cdot m_t \cdot \beta_t$$

Similarly, dividing by  $W_t$  we can define the rate of wealth transmission  $b_{wt}$ :

$$b_{wt} = B_t^*/W_t = (1 + v_t) \cdot \mu_t \cdot m_t = \mu_t^* \cdot m_t$$

with  $\mu_t^* = (1 + v_t) \cdot \mu_t$  = gift-corrected ratio

If  $\mu_t = 1$  (i.e., decedents have the same average wealth as the living) and  $v_t = 0$  (no gift), then the rate of wealth transmission is simply equal to the mortality rate:  $b_{wt} = m_t$  (and  $b_{yt} = m_t \cdot \beta_t$ ). If  $\mu_t = 0$  (i.e., decedents die with zero wealth, like in Modigliani's pure life-cycle theory of wealth accumulation) and  $v_t = 0$  (no gift), then there is no inheritance at all:  $b_{wt} = b_{yt} = 0$ .

In order to apply the economic flow formula  $b_{yt} = (1 + v_t) \cdot \mu_t \cdot m_t \cdot \beta_t$ , we need long-run series on  $v_t$ ,  $\mu_t$ ,  $m_t$  and  $\beta_t$ . The easiest part is the mortality rate  $m_t$  (demographic data is plentiful). Annual long-run series on the aggregate private wealth-national income ratios  $\beta_t$  were recently collected for a large number of countries (Piketty and Zucman, 2014). The more difficult part is about  $\mu_t$ , and even more so  $v_t$ . In order to compute  $\mu_t$ , one needs data on the age-wealth

profile, which can be obtained from household wealth surveys or wealth censuses, or from estate or inheritance tax data (assuming it covers a sufficiently large part of the population, which is not the case for the U.S.). In order to estimate  $v_t$ , one needs reliable administrative data on bequests and gifts, which is very difficult to obtain in a number of countries, so we need to make assumptions (more on this below).

## 3 Main results on the long-run evolution of inheritance

In this section we apply our definitions and present our main results. We start with France and other European countries for which we have estimates (Germany, U.K., Sweden), and we then move to the U.S. case.

### 3.1 Inheritance series for France

#### 3.1.1 The inheritance flow-national income ratio $b_{yt}$

We start by presenting the evidence on the dynamics of the inheritance to national income ratio  $b_{yt}$  in France, a country for which historical data sources are exceptionally good (Piketty, 2011; Piketty and Zucman, 2015).

The main conclusion is that  $b_{yt}$  has followed a spectacular U-shaped pattern over the 20th century. The inheritance flow was relatively stable around 20–25% of national income throughout the 1820–1910 period (with a slight upward trend), before being divided by a factor of about 5–6 between 1910 and the 1950s, and then multiplied by a factor of about 3–4 between the 1950s and the 2000s (see figure 2). These are enormous historical variations, but they appear to be well founded empirically. In particular, the patterns for  $b_{yt}$  are similar with our two independent measures of the inheritance flow.

Using the economic flow definition, we can see that the U-shaped pattern followed by the French inheritance-income ratio  $b_{yt}$  is the product of two U-shaped evolutions. First, it partly comes from the U-shaped evolution of the private wealth-income ratio  $\beta_t$ . The U-shaped evolution of  $b_{yt}$ , however, is almost twice as marked as that of  $\beta_t$ . The wealth-income ratio was divided by a factor of about 2-3 between 1910 and 1950 (from 600-700% to 200-300%), while the inheritance flow was divided by a factor around 5-6 (from 20-25% to about 4%, see figure 2). The explanation is that the rate of wealth transmission  $b_{wt} = \mu_t^* \cdot m_t$  has also been following a U-shaped pattern: it was almost divided by two between 1910 and 1950 (from over 3.5% to

just 2%), and has been rising again to about 2.5% in 2010.

The U-shaped pattern followed by  $b_{wt}$ , in turn, entirely comes from  $\mu_t^*$ . The relative wealth of decedents was at its lowest historical level in the aftermath of World War II (which, as we shall see below, is largely due to the fact that it was too late for older cohorts to recover from the shocks and re-accumulate wealth after the war). Given that aggregate wealth was also at its lowest historical level, the combination of these two factors explain the exceptionally low level of the inheritance flow in the 1950s-1960s. By contrast, the mortality rate  $m_t$  has been constantly diminishing: this long run downward trend is the mechanical consequence of the rise in life expectancy (for a given cohort size).<sup>9</sup>

In the recent decades, a very large part of the rise in  $\mu_t^* = (1 + v_t) \cdot \mu_t$  comes from the rise in the gift-bequest ratio  $v_t$ , which used to be about 20% during most of the 19th-20th centuries, and has gradually risen to as much as 80% in recent decades.<sup>10</sup> That is, the gift flow is currently almost as large as the bequest flow.

Although there is still much uncertainty about the reasons behind the rise in gifts, the evidence suggests that it started before the introduction of new tax incentives for gifts in the 1990s-2000s, and has more to do with the growing awareness by wealthy parents that they will die old and that they ought to transmit part of their wealth inter-vivos if they want their children to fully benefit from it.

In any case, one should not underestimate the importance of gifts. In particular, one should not infer from a declining age-wealth profile at old ages or a relatively low relative wealth of decedents that inheritance is unimportant: this could simply reflect the fact that decedents have already given away a large part of their wealth.

### 3.1.2 The inheritance stock-aggregate wealth ratio $\varphi_t$

How do the annual inheritance flows transmit into cumulated inheritance stocks? Given the data limitations we face, we report on figure 3 two alternative estimates for the share  $\varphi_t$  of total inherited wealth in aggregate French wealth between 1850 and 2010. According to both measures, there is again a clear U-shaped pattern. The share of inherited wealth  $\varphi_t$  was as large as 80-90% of aggregate wealth in 1850-1910, down to as little as 35-45% around 1970, and back

---

<sup>9</sup>The mortality rate, however, is about to rise somewhat in coming decades in France due to baby boomers (see Piketty, 2011). This effect will be even stronger in countries where cohort size has declined in recent decades (like Germany or Japan) and will tend to push inheritance flows toward even higher levels.

<sup>10</sup>See Appendix Figure A1, and Piketty (2011).

up to 65-75% by 2010.

The higher series, which we see as the most reliable, was obtained by applying the micro-based PPVR definition (see section 2 above). The limitation here is that the set of micro data on wealth over two generations that has been collected in French historical archives is more complete for Paris than for the rest of France (see Piketty, Postel-Vinay and Rosenthal, 2006, 2014). For years with missing data for the rest of France, the estimates reported on figure 3 were extrapolated on the basis of the Parisian data. On-going data collection suggests that the final estimates will not be too different from the approximate estimates reported here.

The lower series, which we see as a lower bound, comes from the simplified definition based upon the comparison of inheritance and saving flows (see section 2 above). I.e. the lower series were computed as  $\varphi = b_y / (b_y + (1 - \alpha) \cdot s)$  (using averages values for  $b_y$  and  $(1 - \alpha)s$  computed over the previous 30 years). The key advantage of this simplified definition is that it requires much less data: it can readily be computed from the inheritance flow series  $b_{yt}$  that were reported above. It delivers estimates of the inheritance share  $\varphi_t$  that are always somewhat below the micro-based estimates, with a gap that appears to be approximately constant. The gap seems to be due to the fact that the simplified definition attributes too much saving to pure labor earners with little inheritance.

In both series, the share  $\varphi_t$  of total inherited wealth in aggregate wealth reaches its lowest historical point in the 1970s, while the inheritance flow  $b_{yt}$  reaches its lowest point in the immediate aftermath of World War II. The reason is that the stock of inherited wealth comes from cumulating the inheritance flows of the previous decades – hence the time lag.

### **3.2 Inheritance series for other European countries**

What do we know about the importance of inheritance in other countries ? A recent wave of research attempts to construct estimates of the inheritance flow-national income ratio  $b_{yt}$  in a number of European countries. The series constructed by Atkinson (2013) for Britain and Schinke (2013) for Germany show that  $b_{yt}$  has also followed a U-shaped pattern in these two countries over the past century (see figure 4). Data limitations, however, make it difficult at this stage to make precise comparisons between countries.

For Britain, the inheritance flow  $b_{yt}$  of the late 19th-early 20th centuries seems to be similar to that of France, namely about 20-25% of national income. The flow then falls following



the 1914-1945 shocks, albeit less spectacularly than in France, and recovers in recent decades. Karagiannaki (2011), in a study of inheritance in the UK from 1984 to 2005, also finds a marked increase in that period. The rebound, however, seems to be less strong in Britain than in France, so that the inheritance flow appears smaller than in France today. We do not know yet whether this finding is robust. At this stage, available British series are pure “fiscal flow” series (as opposed to French series, for which we have both “economic” and “fiscal” estimates). As pointed out by Atkinson (2013), the main reason for the weaker British rebound in recent decades is that the gift/bequest ratio  $v_t$  has not increased at all according to fiscal data ( $v_t$  has remained relatively flat at a low level, around 10-20%). According to Atkinson, this could be due to substantial under-reporting of gifts to tax authorities.

Germany also exhibits a U-shaped pattern of inheritance flow  $b_{yt}$  that seems to be broadly as sharp as in France. In particular, just like in France, the strong German rebound in recent decades comes with a large rise in the gift/bequest ratio  $v_t$  during the 1990s-2000s ( $v_t$  is above 50-60% in the 2000s). The overall levels of  $b_{yt}$  are generally lower in Germany than in France, which given the lower aggregate wealth-income ratio  $\beta_t$  is not surprising. Should we compare the rates of wealth transmission (i.e.,  $b_{wt} = b_{yt}/\beta_t$ ), then the levels would be roughly the same in both countries in 2000-2010.

We report on figure 5 the corresponding estimates for the share  $\varphi_t$  of total inherited wealth in aggregate wealth, using the simplified definition  $\varphi = b_y/(b_y + (1 - \alpha)s)$  (again using averages values for  $b_y$  and  $(1 - \alpha)s$  computed over the previous 30 years). For Germany, the inheritance share  $\varphi_t$  appears to be generally smaller than in France. In particular, it reaches very low levels in the 1960s-1970s, due to the extremely low inheritance flows in Germany in the immediate postwar period, and to large saving rates. In recent decades, the German  $\varphi_t$  has been rising fast and seems to catch up with France’s. In the UK, the inheritance share  $\varphi_t$  apparently never fell to the low levels observed in France and Germany in the 1950s, and seems to be always higher than on the Continent. The reason, for the recent period, is that the UK has had relatively low saving rates since the 1970s.<sup>11</sup>

Recent historical research suggests that inheritance flows have also followed U-shaped pat-

---

<sup>11</sup>In effect, British saving rates in recent decades are insufficient to explain the large rise in the aggregate wealth-income ratio, which can only be accounted for by large capital gain (Piketty and Zucman, 2014). Note that the simplified definition of  $\varphi_t$  based upon the comparison between inheritance and saving flows amounts to assuming the same capital gains for inherited and self-made wealth. This seems like the most reasonable assumption, at least as a first approximation.

terns in Sweden (see Ohlsson, Roine and Waldenstrom, 2014). Here  $b_{yt}$  appears to be smaller than in France, but this again seems largely due to lower  $\beta_t$  ratios. When we look at the implied  $b_{wt}$  and  $\varphi_t$  ratios, which in a way are the most meaningful ratios to study, then both the levels and shape are relatively similar across European countries. As shown by Figure 6, the share of inherited wealth followed the same evolution in Sweden and France in the twentieth century (the main difference is that it seems to have increased a bit less in Sweden than in France in recent decades, due to a rise in the private saving rate). We stress again, however, that a lot more data needs to be collected – and is currently being collected – on the historical evolution of inheritance before we can make proper international comparisons.

### 3.3 Inheritance series for the U.S.

Finally, we provide new estimates for the long-run evolution of inheritance in the U.S. As we already mentioned, one special difficulty is that U.S. fiscal data on bequests and gifts are relatively low quality. In particular, the federal estate tax only covers few decedents (in 2012 only about 1 decedent out of 1,000 has paid the estate tax), so the resulting data cannot be used to study aggregate inheritance flows.

Therefore we proceed as follows. First, we apply the formula  $b_{yt} = (1 + v_t) \cdot \mu_t \cdot m_t \cdot \beta_t$  in order to compute inheritance flow series for the U.S. We use standard demographic data sources to compute the mortality rate  $m_t$ , and we borrow the aggregate private wealth-national income ratio  $\beta_t$  from Piketty-Zucman (2014). We use household wealth survey data from the Survey of Consumer Finances over the 1962-2013 period in order to estimate the relative wealth of decedents  $\mu_t$ . We also use data from the U.S. censuses of 1860-1870 (which include information on wealth) in order to estimate the age-wealth profiles and the relative wealth of decedents for the late 19<sup>th</sup> century.<sup>12</sup>

Next, one needs to find ways to estimate the gift/bequest ratio  $v_t$ , which is not easy to do in the absence of high-quality fiscal data. Given the data limitations, we choose to present two alternative estimates. In our benchmark estimate, we assume a fixed  $v_t = 20\%$ .<sup>13</sup> In our high-gift estimate, we assume that  $v_t$  has followed the same trajectory in the U.S. as in France

---

<sup>12</sup>One could also use data from state-level estates taxes (which typically cover a higher fraction of decedents than the federal estate tax) in order to obtain more estimates of  $\mu_t$ , particularly for the early 20<sup>th</sup> century.

<sup>13</sup>This corresponds approximately to what we find in federal estate tax data, but this might underestimate the true  $v_t$ .

and Germany since the 1980s (namely, with a gradual increase from  $v_t = 20\%$  to  $v_t = 80\%$ ).<sup>14</sup>

Finally, we use our resulting  $b_{yt}$  series and the  $\alpha_t$  and  $s_t$  series from Piketty-Zucman (2014) in order to apply the simplified definition  $\varphi = b_y/(b_y + (1 - \alpha)s)$  (again using averages values for  $b_y$  and  $(1 - \alpha)s$  computed over the previous 30 years).

Our estimates are summarized on figure 7.<sup>15</sup> The U.S. pattern also appears to be U-shaped, albeit less marked than in European countries. The inheritance share in aggregate wealth accumulation was lower in the U.S. than in Europe in the 19<sup>th</sup> century and at the eve of World War I (less than 60% in the U.S., vs. over 70% in Europe). However the U.S. inheritance share was rising fast in the late 19<sup>th</sup> and early 20<sup>th</sup> century. The shocks caused by the 1930s and World War II led to a downturn, but much less pronounced than in Europe, so that the U.S. inheritance share became higher than in Europe by mid-20<sup>th</sup> century (with the exception of the U.K.). In recent decades, the inheritance share seems to have increased substantially in the U.S.

However we should stress that there is significant uncertainty about the exact levels and trends for the recent decades, due in particular to the limitations of U.S. estate tax data. In our benchmark estimate, the rise in the inheritance share is relatively moderate, and the U.S. level appears to be intermediate between France and the U.K. as of 2010 (and very close to both). In our high-gift estimate, the rise is much larger, and the share of inheritance in U.S. aggregate wealth appears to substantially higher than in all European countries (including the U.K.).

More research is needed before we can reach more precise comparisons between the U.S. and other countries. In a recent paper, Wolff and Gittleman (2013) analyze the retrospective data on bequests and gifts receipts reported in the SCF and find little evidence of a rise in inheritances since the 1980s. One major problem with this approach, however, is that self-reported inheritance flows are implausibly low, and inconsistent with the economic flow computations (see section 4 below).<sup>16</sup> Given the relatively low US saving rates in recent decades, it is evident that even moderate inheritance flows (between 5% and 10% of national income) imply a relatively large share  $\varphi_t$  of total inherited wealth in aggregate wealth (at least according to the simplified definition of  $\varphi$  based upon the comparison between  $b_y$  and  $s$ ). These estimates are imperfect,

---

<sup>14</sup>See appendix figures A2-A3 for the resulting series for  $\mu_t$  and  $b_{yt}$ .

<sup>15</sup>All detailed computations - as well as a number of sensitivity checks - are provided in the on-line data appendix.

<sup>16</sup>One additional challenge in this study is that inherited assets are generally valued using asset prices at the time the assets were transmitted: no capital gain is included - which probably contributes to a relatively low estimated inheritance share in total US wealth (about 20%, just like in Modigliani's estimates).

but they appear to be more reliable than what one can estimate using self-reported inheritance data.

Another interesting recent study is Kaplan and Rauh (2013), who use Forbes billionaire data. They find that Americans in the Forbes 400 are less likely to have inherited their wealth today than in the 1980s. It is unclear, however, whether this result reflects a true economic phenomenon or illustrates the limits of Forbes and other wealth rankings. Inherited wealth holdings are probably harder to spot than self-made wealth, first because inheritors' portfolios tend to be more diversified, and also because inheritors may not like to be in the press, while many entrepreneurs usually enjoy it and do not attempt to dissimulate their wealth nearly as much. The conclusions about the relative importance of inherited vs. self-made wealth obtained by analyzing Forbes list data may thus be relatively fragile. In particular, it should be noted that the data is purely qualitative (we know whether there is "some inheritance", "predominant inheritance", but no quantitative estimate is actually available).<sup>17</sup> That being said, it is also perfectly possible that the share of inheritance in U.S. wealth accumulation has increased at the aggregate, macro level, but not for top billionaires.

## 4 Open issues and topics for future research

In this section, we discuss a number of open issues and topics which in our view should rank highly in future research agenda on the evolution of inheritance.

### 4.1 The steady-state level of the inheritance share

We have shown that there are substantial variations in the inheritance share over time and across countries. This is partly due to the fact that observed data frequently reflects out-of-steady-state time series. Wealth accumulation spans over several generations and across many decades, and one should be careful not to interpret averages over one or two decades as steady-state outcomes.

However this can also be due to the existence of different possible steady-state values for the share of inheritance in aggregate wealth accumulation. Generally speaking, the inheritance share  $\varphi$  depends upon many different economic and demographic parameters. In particular,

---

<sup>17</sup>Edlund and Kopczuk (2009) observe that in estate tax data the share of women among the very wealthy in the U.S. peaked in the late 1960s (at nearly one-half) and then declined to about one-third. They argue that this pattern reflects changes in the importance of inheritance, as women are less likely to be entrepreneurs. However this is again a relatively indirect way to measure the inheritance share, since many other effects are at play here.

it depends on the structure of saving motives. In societies where individuals save mostly for life-cycle reasons, then the inheritance share should be negligible. Conversely in societies with strong tastes for leaving bequests, then the inheritance share can be arbitrarily large. Generally speaking, it is clear that any inheritance share  $\varphi$  can be a steady-state.

For a given distribution of saving motives, there are several forces implying that lower growth rates might lead to higher inheritance shares. To see this, consider the simplified formula  $\varphi = b_y / (b_y + (1 - \alpha)s)$ , and replace the inheritance flow by  $b_y = \mu \cdot m \cdot \beta$  (neglecting the gift term  $v$  for simplicity) and the saving rate by  $s = g \cdot \beta$  (Harrod-Domar-Solow formula for the standard one-sector capital accumulation model). We get:  $\varphi = \mu \cdot m / (\mu \cdot m + (1 - \alpha)g)$ . In other words, for given  $\mu \cdot m$  and  $\alpha$ , the inheritance share  $\varphi$  is higher when the growth rate is smaller.<sup>18</sup>

This effect can be reinforced by the fact that the  $\mu$  parameter, i.e. the relative wealth of decedents, is endogenous and might well depend on the growth rate  $g$ , as well as on demographic parameters such as life expectancy and the mortality rate  $m$ . In the pure lifecycle model where agents die with zero wealth,  $\mu$  is always equal to zero, and so is the inheritance share  $\varphi$ , independently of the growth rate  $g$ , no matter how small  $g$  is. But for given (positive) bequest tastes and saving parameters, however, one can show that in steady-state  $\mu = \mu(g)$  tends to be higher when growth rates  $g$  and mortality rates  $m$  are lower (Piketty 2011, Piketty and Zucman 2015).

This is an issue that would deserve further research, especially in light of the rapid ageing process and the prospects for negative population growth in a number of countries. It would be interesting to explore in future research the interplay between the inheritance share and the dynamics of wealth inequality (Piketty 2014, Piketty and Zucman 2015).

## 4.2 Developing better data sources on inheritance

Another major challenge for future research is the development of better data sources to study wealth and inheritance. The fact that household wealth surveys suffer from major limitations is already well known. In particular recent research has shown that the SCF underestimates both

---

<sup>18</sup>A similar point has been made by a number of authors, such as Laitner (2001) and DeLong (2003). In particular, according to DeLong, the share of inheritance in total wealth accumulation should be higher in low-growth societies, because the annual volume of new savings is relatively small in such economies (so that in effect most wealth originates from inheritance). Using our notations, the inheritance share  $\varphi = \varphi(g)$  is a decreasing function of the growth rate  $g$ . See also Davies et al. (2012, p.123-124).

the levels and trends in top wealth shares in the U.S., and that one needs to use administrative data (such as capital income flows reported to tax authorities by financial institutions) in order to better monitor the evolution of wealth inequality (Saez and Zucman, 2014).

It is worth stressing that these limitations are even more stringent when it comes to the measurement of inheritance. In order to illustrate this, we have reported on table 1 the ratio between the self-reported flow of inheritance and gift receipts in wealth surveys from France and the U.S. (using the retrospective questionnaires) and the total economic flow on inheritance and gift (which we estimated using macroeconomic data on aggregate private wealth, mortality rates and age-wealth profiles). The ratio is typically of the order of 20-30%, which is extremely low. Another difficulty is that underreporting behavior might be biased in various ways, e.g. individuals with particular wealth trajectories might tend to under-report inheritance receipts with different intensities. We have attempted to develop various imputations techniques in order to scale up the inheritance receipts in the SCF, and our general conclusion is that it is very difficult to come with robust findings. In order to improve data quality, it seems necessary to link up wealth survey data with administrative data sources. This includes data from property records, capital income flows and estate declarations. Otherwise it will be very difficult to make substantial progress on these important issues.

## References

- Atkinson, Anthony B.**, “Wealth and Inheritance in Britain from 1896 to the Present,” Working paper, 2013.
- Atkinson, A. & A.J. Harrison**, *Distribution of Personal Wealth in Britain, 1923-1972*, Cambridge University Press, 1978, 330p.
- Atkinson, Anthony B., Thomas Piketty and Emmanuel Saez**, “Top Incomes in the Long Run of History,” *Journal of Economic Literature*, 2011, vol.49(1), pp.3-71.
- Blinder, A.**, “Comments on Modigliani and Kotlikoff-Summers” , in *Modelling the Accumulation and Distribution of Wealth*, D. Kessler & A. Masson eds., pp.68-76, Oxford University Press, 1988
- Davies, James B., Rodrigo Lluberas and Anthony Shorrocks**, “Global Wealth Data-book”, Credit Suisse, 2012
- DeLong, J. B.**, “Bequests: An Historical Perspective,” in *The Role and Impact of Gifts and Estates*, ed. A. Munnell (Washington, DC: Brookings Institution, 2003).
- Kaplan, Steven N., and Joshua Rauh**, “Family, Education, and Sources of Wealth among the Richest Americans, 1982–2012.”, *American Economic Review*, 2013, 103(3): 158 – 166
- Karagiannaki, Eleni**, “Recent trends in the size and the distribution of inherited wealth in the UK”, CASE paper 146, London School of Economics, 2011
- Kopczuk, Wojciech and Lena Edlund**, “Women, wealth and mobility”, *American Economic Review*, 2009, 99(1), 146-78.
- Kotlikoff, L.**, “Intergenerational Transfers and Savings”, *Journal of Economic Perspectives*, 1988, n°2(2), pp.41-58
- Kotlikoff, L. & L. Summers**, “The Role of Intergenerational Transfers in Aggregate Capital Accumulation”, *Journal of Political Economy*, 1981, n°89, pp.706-732
- Laitner, John**, “Bequest Behaviour and the National Distribution of Wealth”, *Review of Economic Studies*, 46(3), 1979, pp.467-483.
- Laitner, John**, “Secular Changes in Wealth Inequality and Inheritance”, *Economic Journal*, 111(474), 2001, pp.691-721.
- Modigliani, F.**, “Life Cycle, Individual Thrift and the Wealth of Nations”, *American Economic Review*, 1986, n°76(3), pp.297-313
- Modigliani, F.**, “The Role of Intergenerational Transfers and Lifecycle Savings in the Accumulation of Wealth” , *Journal of Economic Perspectives*, 1988, n°2(2), pp.15-40
- Ohlsson, H., J. Roine, D. Waldenstrom**, "Inherited Wealth Over the Path of Development: Sweden 1810-2010", mimeo, 2014
- Piketty, Thomas**, “On the Long-Run Evolution of Inheritance: France 1820-2050,” *Quarterly Journal of Economics*, 2011, vol.126(3), pp.1071-1131.
- Piketty, Thomas**, *Capital in the 21st Century*, Harvard University Press, 2014
- Piketty, Thomas, Gilles Postel-Vinay and Jean-Laurent Rosenthal**, “Inherited vs. Self-Made Wealth: Theory and Evidence from a Rentier Society (1872-1927)”, *Explorations in Economic History*, 2014, vol.51, n.1, p.21-40

**Piketty, Thomas and Gabriel Zucman**, “Capital is Back: Wealth-Income Ratios in Rich Countries 1700-2010,” *Quarterly Journal of Economics*, 2014, vol.129, no.3, pp.1155-1210

**Piketty, Thomas and Gabriel Zucman**, “Wealth and Inheritance in the Long Run,” *Handbook of Income Distribution*, 2015, vol.2B, chapter 15, p.1303-1368

**Saez, Emmanuel and Gabriel Zucman** “Wealth Inequality in the U.S. Since 1913: Evidence from Capitalized Income Tax Data”, 2014, NBER working paper.

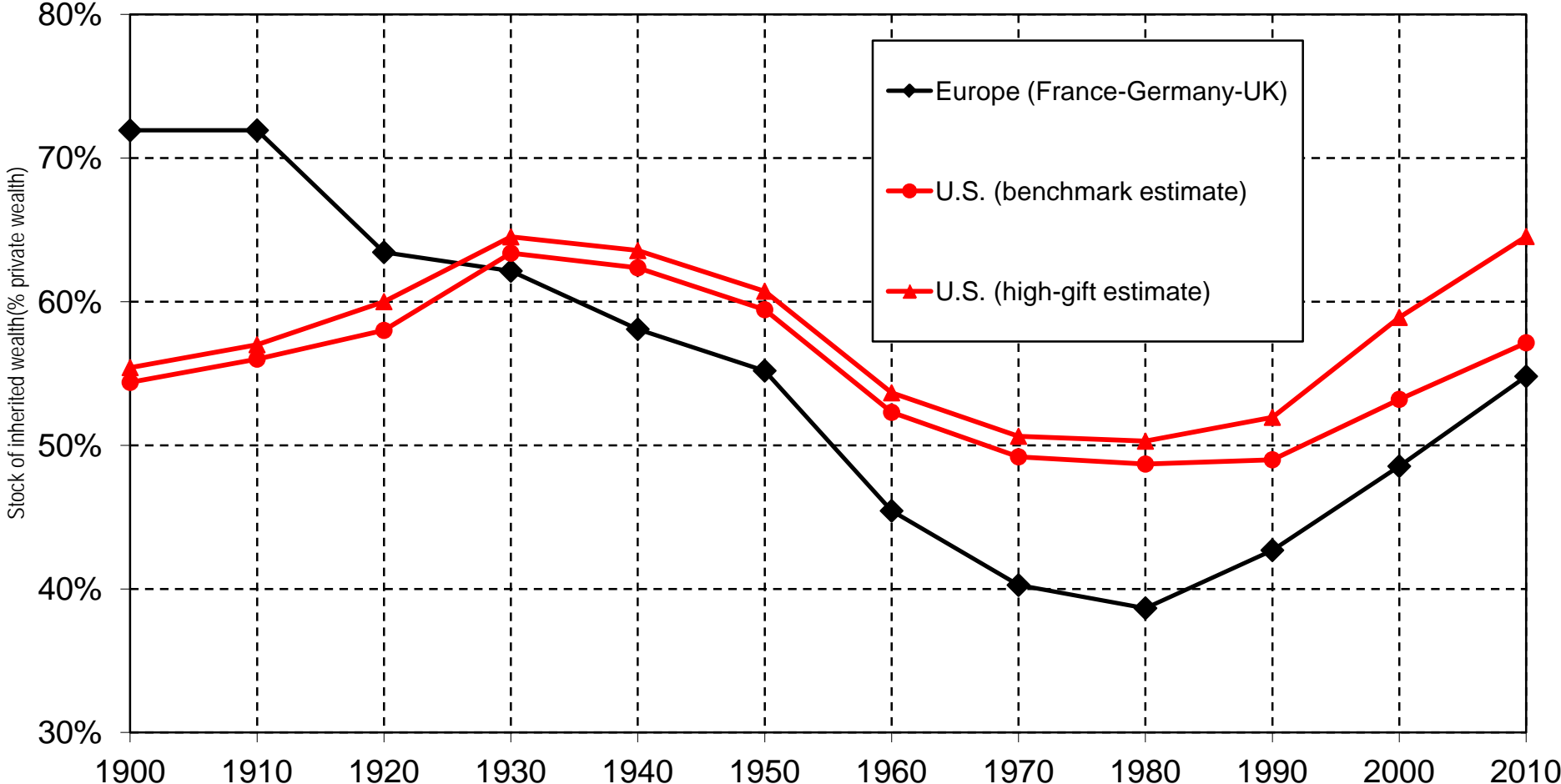
**Schinke, Christoph**, “Inheritance in Germany 1911 to 2009,” 2013, PSE Working Paper.

**Wolff, Edward and Maury Gittleman**. “Inheritances and the Distribution of Wealth Or Whatever Happened to the Great Inheritance Boom?”, *Journal of Economic Inequality*, 2013.



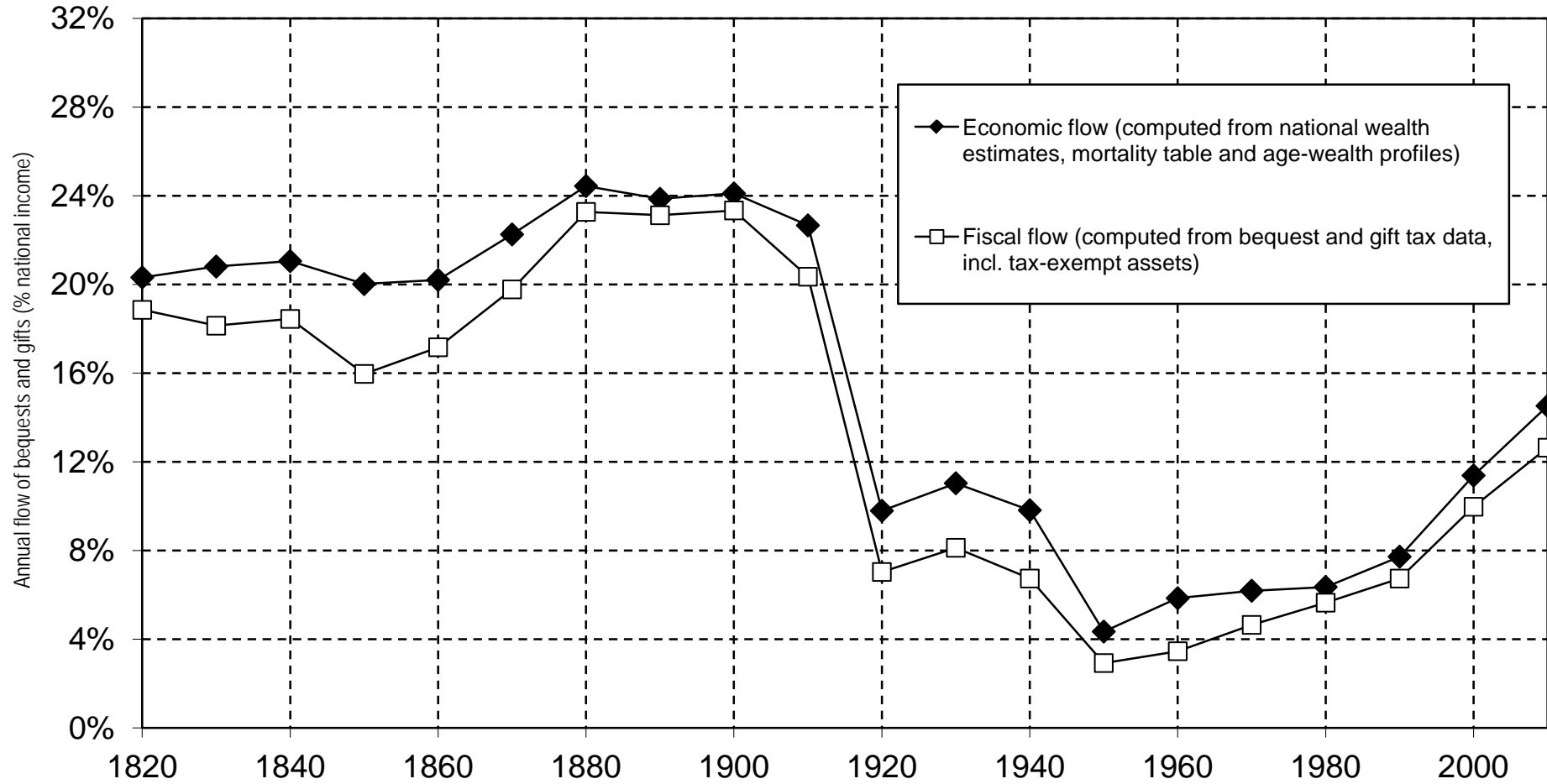
**Figure 1. The share of inherited wealth. Europe and the U.S. 1900-2010**

(simplified definitions using inheritance vs. saving flows) (approximate, lower-bound estimates)



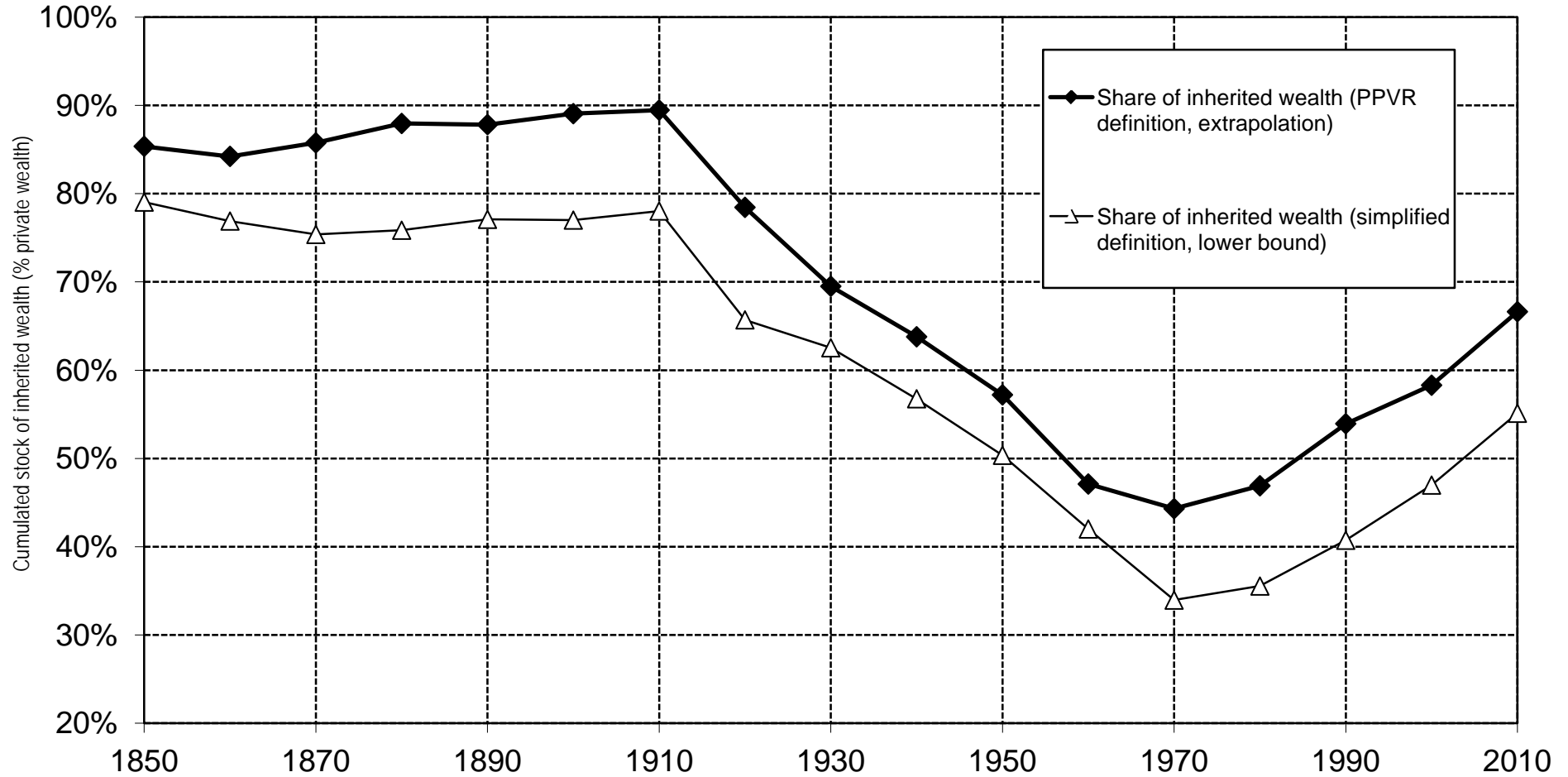
The inheritance share in aggregate wealth accumulation was over 70% in Europe in 1900-1910. It fell abruptly following 1914-1945 shocks, down to 40% in 1970-1980 period. It is back to about 50-60% in 2000-2010 and rising. The U.S. pattern also appears to be U-shaped, but less marked, and with significant uncertainty regarding recent trends, due to data limitations.

**Figure 2. The annual inheritance flow as a fraction of national income, France 1820-2010**



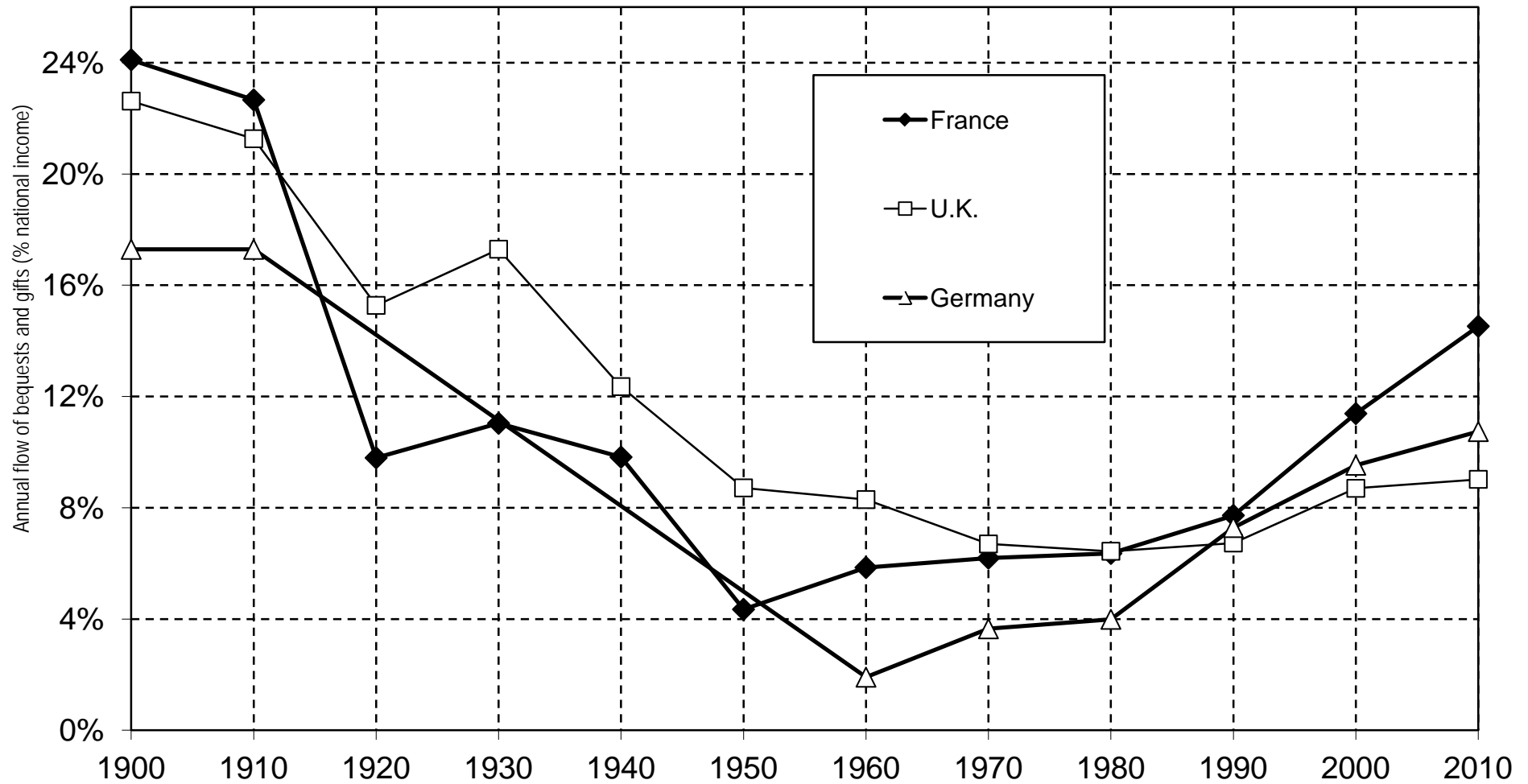
The annual inheritance flow was about 20-25% of national income during the 19th century and until 1914; it then fell to less than 5% in the 1950s, and returned to about 15% in 2010.

**Figure 3. The share of inherited wealth as a fraction of aggregate private wealth, France 1850-2010**



Inherited wealth represents 80-90% of total wealth in France in the 19th century; this share fell to 40%-50% during the 20th century, and is back to about 60-70% in the early 21st century.

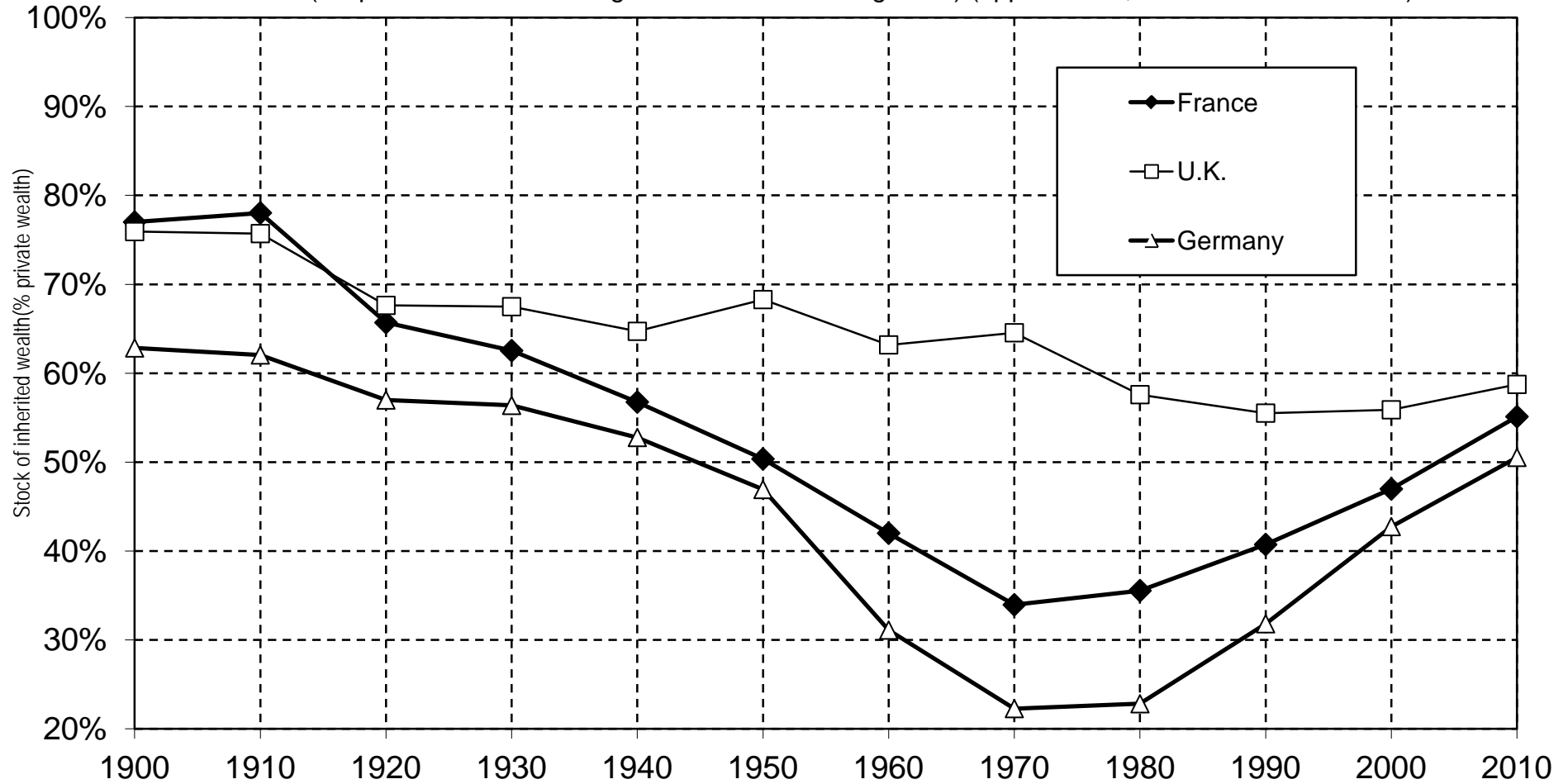
**Figure 4. The inheritance flow in Europe 1900-2010**



The inheritance flow follows a U-shaped in curve in France as well as in the U.K. and Germany. It is possible that gifts are underestimated in the U.K. at the end of the period.

**Figure 5. The share of inherited wealth in Europe 1900-2010**

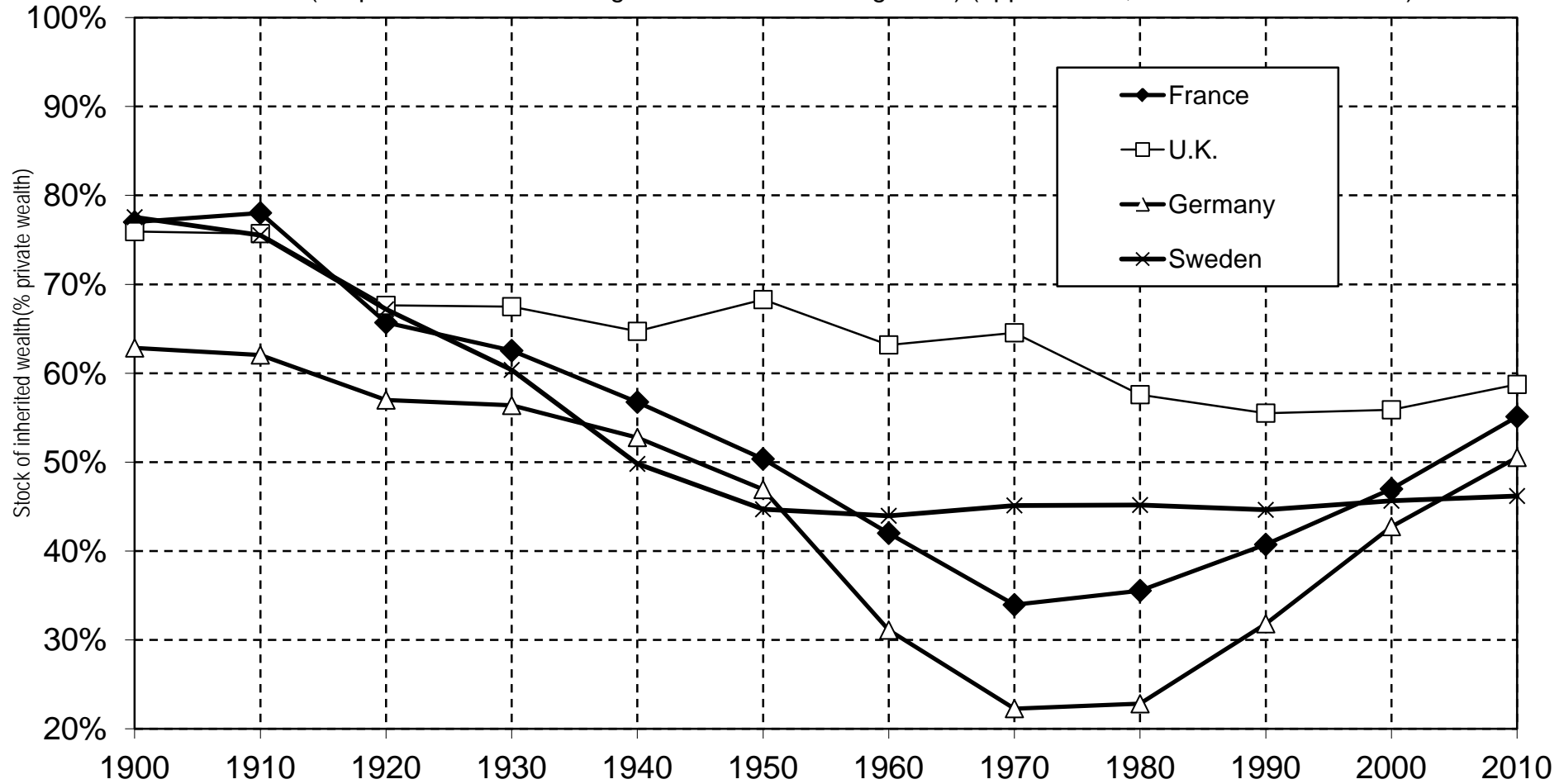
(simplified definitions using inheritance vs. saving flows) (approximate, lower-bound estimates)



The inheritance share in aggregate wealth accumulation follows a U-shaped curve in France and Germany (and to a more limited extent in the U.K. and Germany. It is possible that gifts are under-estimated in the U.K. at the end of the period.

### Figure 6. The share of inherited wealth: the case of Sweden

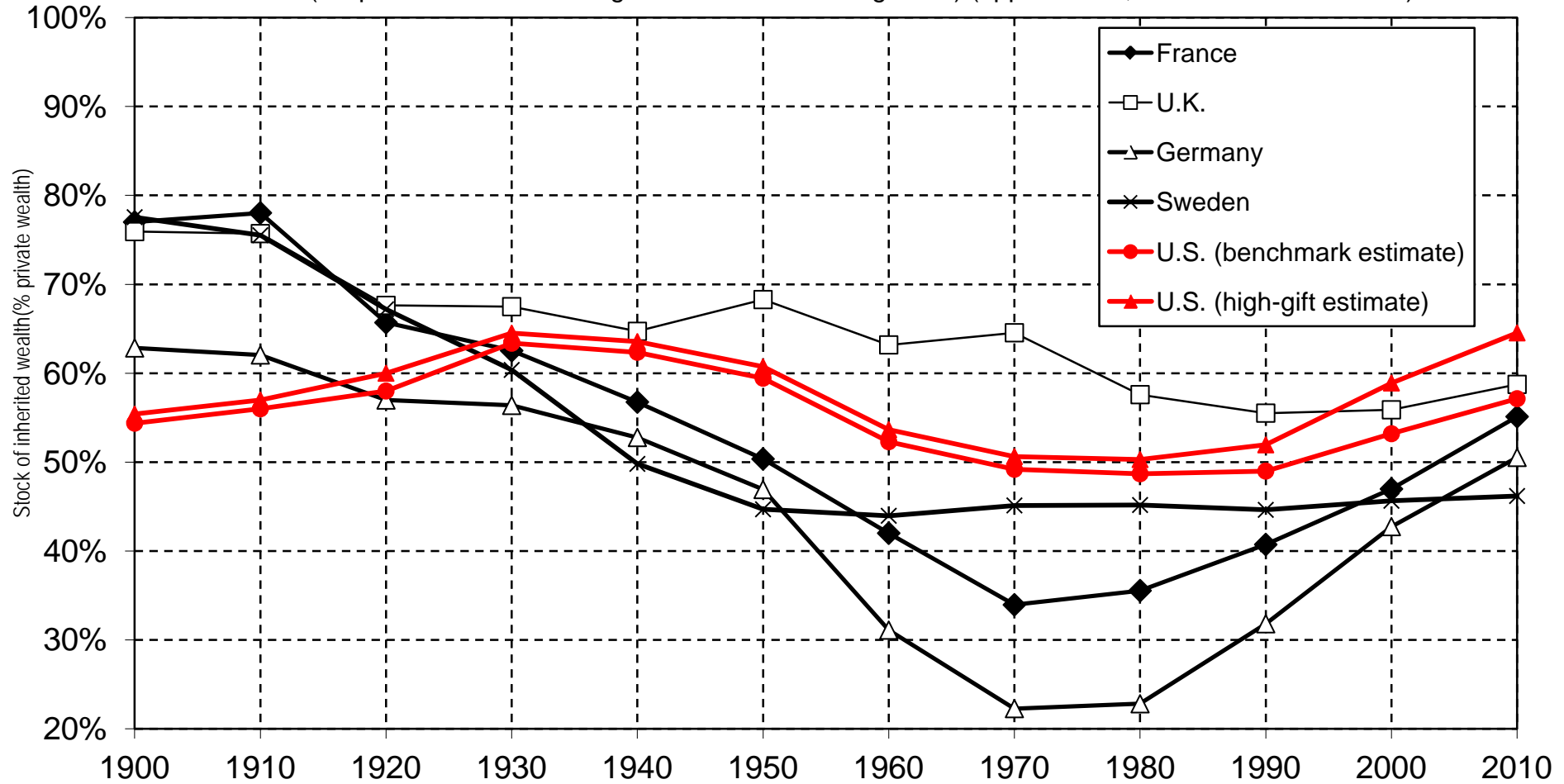
(simplified definitions using inheritance vs. saving flows) (approximate, lower-bound estimates)



The inheritance share in aggregate wealth accumulation follows broadly similar evolutions in Sweden and France over 1900-1960 period, but in recent decades the Swedish inheritance share shows little increase, due a large rise of the saving rate.

### Figure 7. The share of inherited wealth: the case of the U.S.

(simplified definitions using inheritance vs. saving flows) (approximate, lower-bound estimates)



The inheritance share in aggregate wealth accumulation seems to follow a U-shaped curve in the U.S. over the past century, but it is less marked than France and Germany. There is significant uncertainty regarding recent trends, due to data limitations.

<b>Table 1. Evidence of under-reporting of inherited wealth in household surveys</b>		
		Self-reported flow of inheritance and gift receipts (% of benchmark estimates of total economic flow of inheritance and gift)
France (INSEE Wealth Survey)	2003	29%
	2009	21%
United States (Survey of Consumer Finances)	1989	40%
	1992	30%
	1995	58%
	1998	24%
	2001	19%
	2004	25%
	2007	19%
	2010	22%
	2013	24%

In 2003, the self-reported flow of inheritance and gift receipts in the French household wealth survey equals 29% of the total estimated economic flow.

Note. The self-reported flow was computed as the average receipts reported for the 6 years before survey year (the results are similar if we take a 3-year or 1-year window). The benchmark economic flow was computed using macroeconomic data on aggregate wealth, mortality rates and age-wealth profiles (see text).