

The Yellow Duckmarine vehicle drivers'/masters' safety checklists

Crew Persons Name _____

Date _____

Vessel: Wacker Quacker _____

Crew Persons – Daily Checks

Tick Box

1	P.A system operating? (if using CD, Ensure CD is present)	
2	Mobile Phone – on board?	
3	Leaflet rack full with spare leaflets on board?	
4	Three ropes on board?	
5	Splash Guard in place?	
6	Crew Lifejacket on board?	
7	Emergency rudder handle on board?	
8	Refuelling complete?	
9	Vehicle washed down?	

Drivers/Boat Master Daily Safety Checks

VESSEL: _____ **REG:** _____ **ENGINE HOURS:** _____ **DATE:** _____
 (TICK = SERVICEABLE) (TICK = SERVICEABLE)
 (CROSS = DEFECTIVE) (CROSS = DEFECTIVE)

PCV DRIVER CHECKS

1. Check Ops. License and Tax disc
2. Check all driver controls and instruments
3. Check driver and crew seat for operation
4. Inspect first aid kit is present and correct
5. 3x foam fire extinguishers are serviceable
6. Inspect floors for security
7. Inspect passenger seats are secure and serviceable
8. Emergency exits all correctly identified
9. Check security of all steps and hand rails
10. Check all lights internal and external
11. Inspect all driving mirrors for condition
12. Inspect tyres wheel nuts for wear and condition
13. Check body/hull for condition or damage
14. Inspect passenger windows for condition

BOAT MASTER CHECKS

15. Check all buoyancy aids are in place
16. Ensure 3x fenders in place and secure
17. Ensure boat hook is present and stowed
18. Ensure mooring ropes are present and stowed
19. Ensure emergency bilge pump handle is stowed
20. Ensure emergency rudder handle is stowed
21. Check splash guard and seal for operation
22. Inspect all life rings 2 with lights and 2 with ropes
23. Inspect anchor for security and operation
24. Check navigation lights for operation
25. Check all bilge taps and bungs are secure
26. Check life raft(s) for security and condition
27. Inspect emergency ladder for operation if fitted
28. Ensure mobile phone is on board and is charged

ON COMPLETION OF DUTY

29. Vehicle refuelled - YES / NO Amount £ _____

30. Number of tours completed _____

31. BRAKES!- Please specify condition of brakes

(please write a description in the box provided below e.g.)

Brake effort low
 Front brakes pull to off side/near side
 Brake pedal spongy
 Brakes noisy
 Brakes binding

☐
☐
☐

(TICK = SERVICEABLE)

(CROSS = DEFECTIVE)

I certify that the above checks have been carried out and any defects found have been noted below!

Signed by Driver / Boat Master _____

DEFECTS - All defects found must be recorded and reported to the mechanic prior to the next duty!

No.	Description Of Above Defect	Action taken by mechanic

I certify that the above defects if any have been inspected and any rectifications required have been carried out as noted!

Signed by Mechanic on Duty _____

The Yellow Duckmarine Pre Splashdown/Slipway Checklist



1. Passenger safety announcement (including location of lifejackets and life buoys, location of emergency exits, holding tight when vessels enters the water);
2. Release side screen bungees;
3. Visually check all 7 drain caps in place;
4. Check hydraulic steering activated and rudder movement/clear of obstruction.

The Yellow Duckmarine 2013 pre-departure and pre-splashdown safety briefs

10. Passenger Safety Announcements

Passenger safety announcements are to be made by the Master or crew person on 2 occasions during each trip.

1. Prior to Setting Off From The Bus Stop.

If the any or all of the side curtains are rolled up and a significant number of children are on board, during the welcome and general comments, passengers will be told:

Please do not to put hands, arms, heads or any other part of your body outside of the vehicle whilst it is in motion. Please be very careful with any children that are in your party and ensure that they do not lean out over the side'

2. Whilst Stopped Prior To Going Down The Slipway

The crew person will finish the road tour commentary with the phrase," **I am now handing you over to the Skipper for the famous Duck Splashdown!"** The crewperson will make a joke about getting off, before handing the microphone to the skipper. The Skipper will then use this lead in to commence the safety briefing

No,(the Crewperson) is not getting off, they are pulling up the steps and fitting a splashguard.

Pointing to the buoyancy aids, the Skipper then commences the safety briefing

Explain where the life jackets are for each person, in the unlikely event we need to use them, either (the Crewperson) or myself, will instruct you in their use. But if anyone feels the need now, then feel free put one on.

Again pointing to the windows, if they are all rolled up the skipper will announce **that all the windows are emergency exits**

If any or all the windows are down, the skipper pointing to the windows, will announce **that all the windows are emergency exits, and the ones that are down, you may have noticed that they are zipped. In an Emergency, you don't have to worry about the zips, if you push on the windows, they will open, they are only secured with Velcro.**

When we hit the water, there can be bump. For the younger or shorter members on board, please sit well back in the seats and make sure no one hits their head on the seat rail in front. If anyone is on the rear seats: For the passengers sitting on the rear seats, please hold on, especially as we go over the kerb.

If School group or similar of younger children the following will be added: **In the event of an emergency, will the children please remain in their seats until instructed by their teachers or carers**

The Crewpersons water based commentary will describe the life saving equipment and various pumps fitted whilst in the Salthouse Dock

An example of an earlier version of The Yellow Duckmarine pre-splashdown safety brief

10. Passenger Safety Announcements

Passenger safety announcements are to be made by the Master or crew person on 2 occasions during each trip.

1. Prior to Setting Off From The Bus Stop.

During the welcome and general comments regarding the tour that is about to start, passengers are to be told that:

'In the event of any emergency, you must follow the instructions of the Master and crew person at all times. This is particularly important whilst we are on the water, and before we go down the slipway later on in the tour, we will give you a further safety briefing'. As this is an open sided vehicle there is a danger of injury if you put hands, arms, head or any other part of your body outside of the vehicle whilst it is in motion. Whilst there are side screens in place for weather protection, they are only secured by Velcro fasteners and should not be leaned on or pushed out, other than as a means of emergency evacuation of the vehicle. Please be very careful with any children that are in your party and ensure that they do not lean out over the side'

2. Whilst Stopped Prior To Going Down The Slipway

' We are now preparing for entry into the water and the famous Duck Splashdown! Our crew person is now stowing the rear steps and fitting the watertight anti splash door to the stern. Please listen carefully as I run through this safety briefing.

The vessel carries all the safety equipment specified on the current Passenger Certificate issued by the Maritime & Coast Guard Agency. This is displayed at the rear of the Duck. For passenger safety we have 2 life rafts, (on the roof above), 4 lifebuoys, (point out locations) first aid equipment and 32 buoyancy aids usually referred to as lifejackets, which are on the racks above your heads. In the unlikely event of an emergency whilst on the water either myself or the crew will ask you to put on your lifejacket as shown (demonstrate). Please note that if you are in the water and need to attract attention, there is a whistle attached. If we do have to abandon ship then a life raft will be launched either side of the Duck and on the instruction of the Master to abandon ship you should make for and hold on to the life raft nearest to you. Please note that side-screen are only held in place by Velcro and push out for escape purposes. Additionally, the 4 lifebuoys will be deployed and each is designed to support up to 2 persons holding on to it.

Having said all this, I should point out that the Duck is filled with buoyancy foam and has 5 separate bilge pumps one of which is designed to pump water out from a 5-inch shell hole! We are also in contact with our operations office at all times so we believe we have a very safe operation.

Finally, as we accelerate down the slipway please hold on tight and make sure children are secure in their seats.'

The Yellow Duckmarine maintenance and inspection record sheets

Pearlwild Ltd. Safety Inspection Record and 'A' Service



Vehicle Registration : _____

Vehicle ID : _____ WQ

Odometer Reading : _____

Date of Inspection : _____

Notes : **IM Ref.** (col 2) - for more details on each item listed, look under this reference number in the VOSA Inspection Manual
Serviceable (col 4) - enter the appropriate code : ☒ = Satisfactory ☐ R = Repair required ☐ X = Safety item defect ☐ N/A = Not applicable

Part 1 - Inspection

A : Ground level and under vehicle

Check No	IM Ref	Item Inspected	Serviceable	Defect Found	Rectified By
1	19	Security of body and hull			
2	20	Exterior of body			
3	6	Road wheels and hubs			
5	8	Condition of tyres			
6		Torque all wheel nuts for specified torque settings			
7	41	Condition of chassis and hull			
8	44	Oil leaks			
9	45	Fuel tanks and system			
10	46	Exhaust leaks			
11	54	Steering and mechanism - <i>check linkages for wear and security</i>			
12	48	Check suspension, trunion bar and panhard rods for cracks and security			
13	53	Axles, stub axles and wheel bearings			
14		Check all prop shafts, universal joints and pillow blocks for wear			
15	59	Brake systems and components, incl. linings and hoses			
16	62	Reflectors and rear markings			
17	63	Lamps			
18	66	Direction indicators and hazard warning lamps			
19	67	Aim of headlamps - <i>visual check only</i>			
20		Check engine oil, coolant and screen wash levels			
21		Check alternator, alt belts, pulleys for condition and security			
22		Drain all differential housings of water and check oil level			
23		Replace and secure all bungs and ensure chain fitted			

B : Inside vehicle

Check No	IM Ref	Item Inspected	Serviceable	Defect Found	Rectified By
24	18	Driver's Seat			
25		Check crew and passenger seats for security and condition			
26		Check floor plates, rear steps and handrails secure			
27	27	Horn			
28	28	Driving Controls - <i>hand brake, gear lever, clutch, prop lever etc</i>			
29		Check oil, air, temperature and battery gauge for operation			
30	30	Steering - <i>check wheel and column for free play and wear</i>			
31	37	Service Brake Pedal, master cylinder and fluid levels			

C : Marine safety inspection items

Check No	Item Inspected	Serviceable	Defect Found	Rectified By
32	Check Higgings pump and prop shafts for security and wear			
33	Inspect rudder cable for signs of fraying and wear, check hydraulic steer components / oil			
34	Check marine prop shaft bearing for wear and GREASE DAILY			

Part 2 - Comments on faults found

Check No	Fault details
Name of Inspector : _____ Signature of Inspector: _____	

Part 3 - Action taken on faults found

Action taken on fault	Rectified by
Items transferred to Outstanding Defects Job Card (List item number and Job Card date) :	

Part 4 - Declaration

I certify that the above inspection has been completed, the recorded defects rectified and in my opinion the vehicle is now in a roadworthy condition.

Signature of Inspector : _____ Date : _____

Audited by : _____ Date : _____

E : Braking performance (roller brake/decelorometer test)

Check No	IM Ref	Item Inspected	
51	71	Service brake performance	%
52	72	Secondary brake performance	%
53	73	Parking brake performance	%

Part 2 - Comments on faults found

Check No	Fault details
Items transferred to Outstanding Defects Job Card (list item number and Job Card date) :	
Name of Inspector : Signature of Inspector:	

Part 3 - Action taken on faults found

Action taken on fault	Rectified by

Part 4 - Major Components Used

Component	Date

Part 5 - Additional 'C' Service Items

Item	CHECK = Adjust / Repair as necessary	Completed
LUBRICATION		
Grease and oil all points		
Check and top up all units. Drain and refill if necessary		
Drain bilges and shaft tunnels - SECURELY REPLACE ALL BUNGS (Daily)		
Check and top up batteries and brake fluid reservoir		
Check coolant / anti-freeze		
Drain water and/or accumulation in brake reservoir		

Part 6 - Declaration

I certify that the above inspection has been completed, the recorded defects rectified and in my opinion the vehicle is now in a roadworthy condition.

Signature of Inspector : _____ Date : _____

Audited by : _____ Date : _____

B : Inside vehicle

Check No	IM Ref	Item Inspected	Serviceable	Defect Found	Rectified By
22	18	Driver's Seat - Security and Condition			
23	22	Mirrors			
24	23	Glass and View of the Road			
25	25	Windscreen Wipers and Washers			
26	26	Speedometer and check all dash gauges			
27	27	Horn			
28	28	Driving Controls			
29	30	Steering Wheel			
30	38	Service Brake Operation and components and fluid levels			
31	36	Hand levers operating mechanical brakes			
32	17	Driver's Accommodation			
33	21	Interior of body, passenger entrance/exit steps and platform			

C : Marine safety inspection items

Check No	Item Inspected	Serviceable	Defect Found	Rectified By
34	Check rudder for operation and security; Check hydraulic fluid			
35	Check rudder cables, linkages, supports and securing devices for condition			
36	Check propellor, shafts and seals for condition and security			
37	Check all hull bungs are secure			
38	Check splash guards secure and chain fitted			
39	Body clearance			
40	Life rafts fitted on roof (x2)			
41	Lifebuoys (x2) with lights port and starboard			
42	Lifebuoys (x2) with lines forward and aft			
43	Condition and security of anchor, anchor box, chains and ropes			
44	Hand bilge pump secure and in good condition			
45	Bilge pumps, security, condition and operation. Check test circuit works			
46	Navigation lights secure and serviceable			

D : Other items

Check No	Item Inspected	Serviceable	Defect Found	Rectified By
47	Check tax disc, operators licence and MCA certificates present and valid			
48	Fire Extinguishers - 2 x 9ltr foam and 1 x 3ltr fgam			
49	Legal lettering complete			
50	PA System in good working order			

Pearlwild Ltd. Safety Inspection Record and 'C' Service



Vehicle Registration : _____

Vehicle ID : _____ WQ

Odometer Reading : _____

Date of Inspection : _____

Notes : IM Ref. (col 2) - for more details on each item listed, look under this Reference number in the VOSA Inspection Manual

Serviceable (col 4) - enter the appropriate code : ☒ = Satisfactory R = Repair required X = Safety item defect N/A = Not applicable

Part 1 - Inspection

A : Ground level and under vehicle

Check No	IM Ref	Item Inspected	Serviceable	Defect Found	Rectified By
1	19	Security of body and hull			
2	20	Exterior of body - check for damage and corrosion			
3	5 46	Exhaust leaks			
4	6	Road wheels and hubs			
5	8	Condition of tyres			
6	41	Condition of chassis			
7	42	Electrical equipment and wiring -check gauges			
8	43	Engine and transmission mountings			
9	44	Oil leaks			
10	45	Fuel leaks			
11	54	Steering and mechanism			
12	48	Suspension and suspension components			
13	53	Axles, stub axles and wheel bearings			
14	57	Transmission			
15	59	Brake systems and components			
16	62	Reflectors and rear markings			
17	63	Lamps			
18	66	Direction indicators and hazard warning lamps			
19	67	Aim of headlamps- visual check only			
20		Ancillary equipment			
21	74	Other dangerous defects			

Pearlwild Ltd. Safety Inspection Record and 'B' Service



Vehicle Registration :

Vehicle ID : WQ

Owner's Meter Reading :

Date of Inspection :

NOTES: IM Ref. (col 2) - for more details on each item listed, look under this reference number in the VOSA Inspection Manual

SERVICEABLE (col 4) - enter the appropriate code : ✓ = Satisfactory R = Repair required X = Safety item defect N/A = Not applicable

Part 1 - Inspection

** (Item 15) = Chock vehicle, release handbrake and jack up one rear wheel*

Check No	IM Ref	Item Inspected	Serviceable	Defect Found	Rectified By
1		Remove all hull and transmission cover plugs			
2		Check engine oil, coolant and screen wash levels			
3		Check engine water pump for wear and leaks			
4	54	Check steering box oil level. Replace if contaminated;			
	48	Check steering & suspension units, grease all points under hull			
5	44	Check fuel system for leaks. Drain sediment			
6	8	Check tyres for wear and general condition;			
	6	Check wheel and nuts for condition and security			
7		Check clutch adjustment and operation			
8	6	Check wheel bearings and adjust brakes as necessary			
9	53	Check front axle swivel bearings			
10	*	Check/inspect water & road transfer cases input & output shaft			
		Remove floor plates, check oil levels in marine and road transfer boxes			
11	59	Check brake master cylinder fluid level;			
		Check brake system and components			
12		Check bilge pump pick up points (5) for dirt and debris;			
		Check electric bilge pumps for correct operation			
13		Check mechanical bilge pump for condition, adjust chain and lubricate			
14		Grease all external grease nipples			
15		Check and grease all shafts, including rudder and prop glands;			
		Check propeller and rudder, including all cables and linkages			
16		Drain water from axles and top up with diff oil			
17		Check controls and instruments for correct operation, including horn			
18	62/63/66	Check all lights, external and internal, including Navigation lights			
19		Ensure all hull plugs / bungs are refitted and secured upon completion			
20		Ensure splashguard is fitted			
21		Check seats, handrails and steps			

Part 2 - Comments on faults found

Check No	Fault details

Name of Inspector :

Signature of Inspector:

Part 3 - Action taken on faults found

Action taken on fault	Rectified by
Items transferred to Outstanding Defects Job Card (List item number and Job Card date) :	

Part 4 - Declaration

I certify that the above inspection has been completed, the recorded defects rectified and in my opinion the vehicle is now in a roadworthy condition.

Signature of Inspector : _____ Date : _____

Audited by : _____ Date : _____

Design plans for the London Frog Company strengthened propeller shaft tunnel

DRAWING 2 B
NOT TO SCALE

6MM CS SLOUP
RIVET SECURING
REINFORCEMENT PLATES I.A.2.

SHADDED AREA
INDICATES MATERIAL
TO BE REMOVED AND
REPLACED, NEW
MATERIAL WELDED
AS PER SPEC.

RIVERS 6MM. CS
ON OUTSIDE
SECURING
REINFORCEMENT
PLATES I.A.2. TO
EXISTING

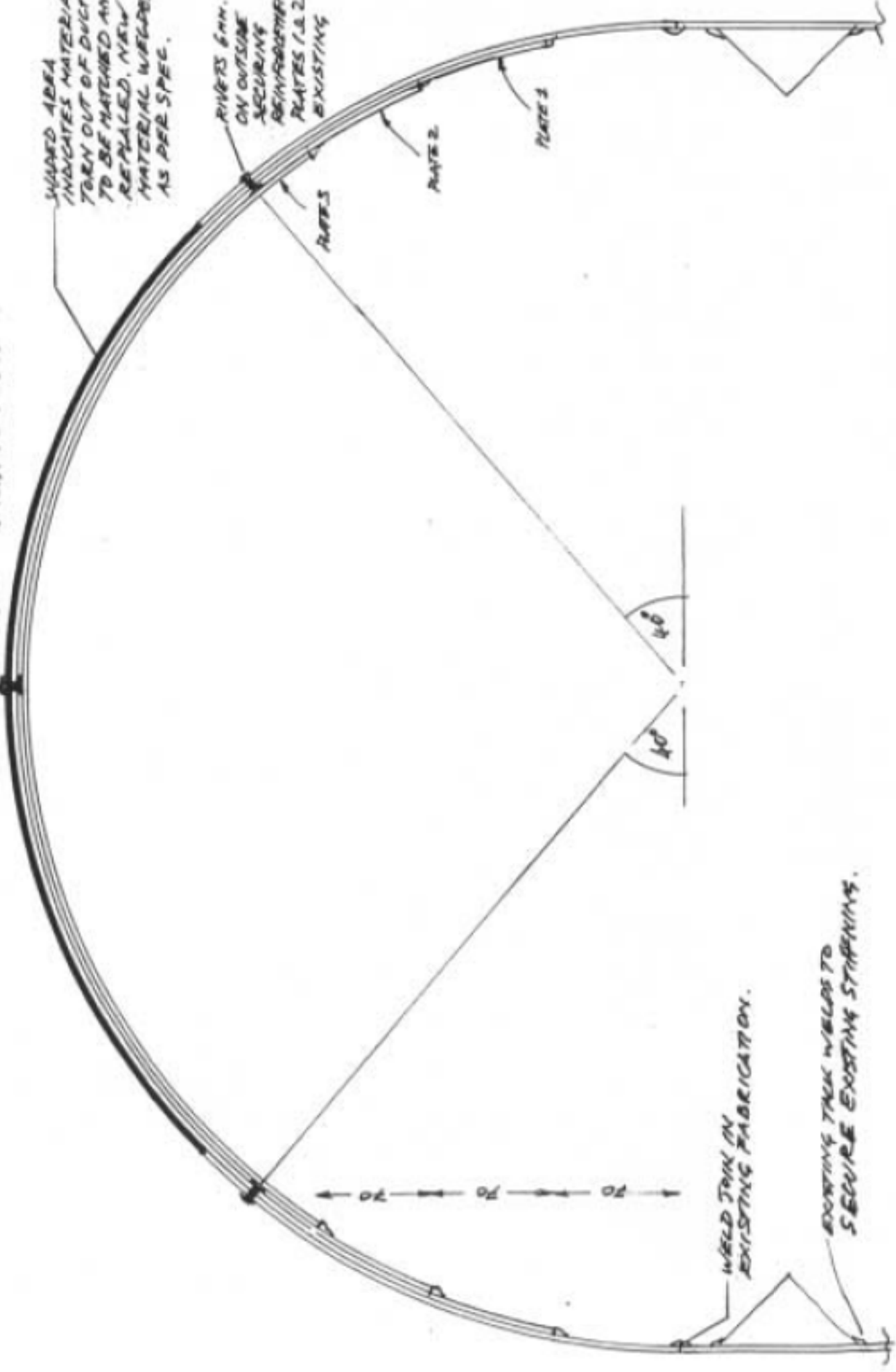
70 70 70 70

45°

40°

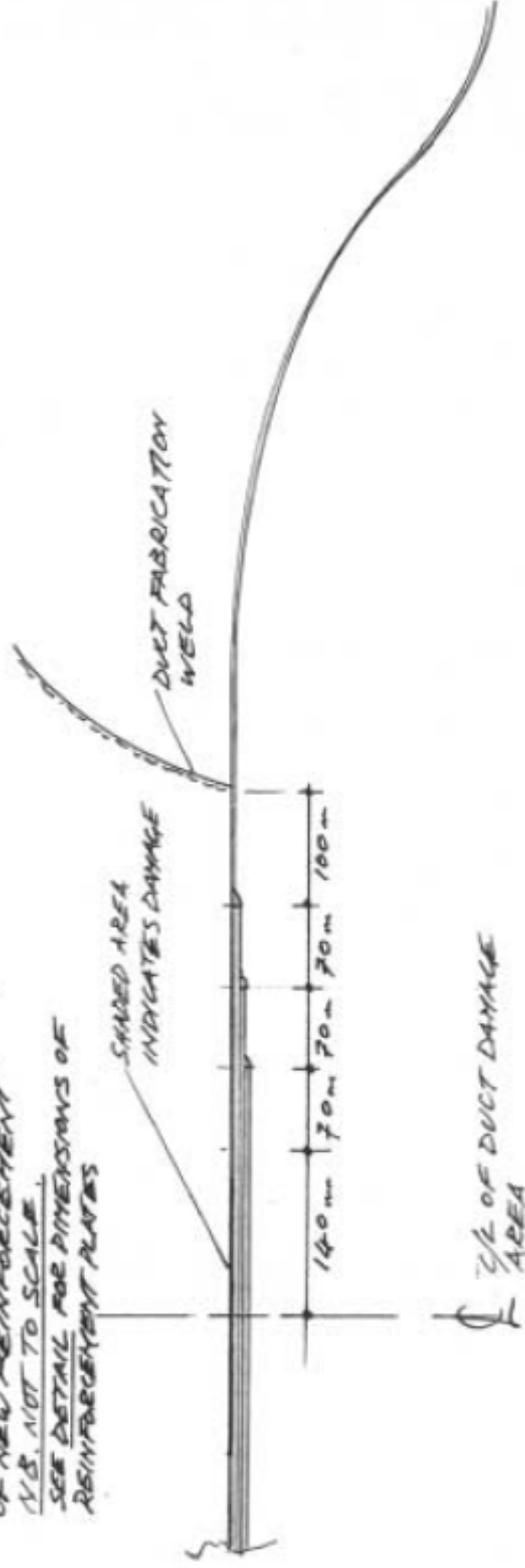
WELD JOINT IN
EXISTING FABRICATION.

EXISTING TACK WELDS TO
SECURE EXISTING STAPPLINGS.

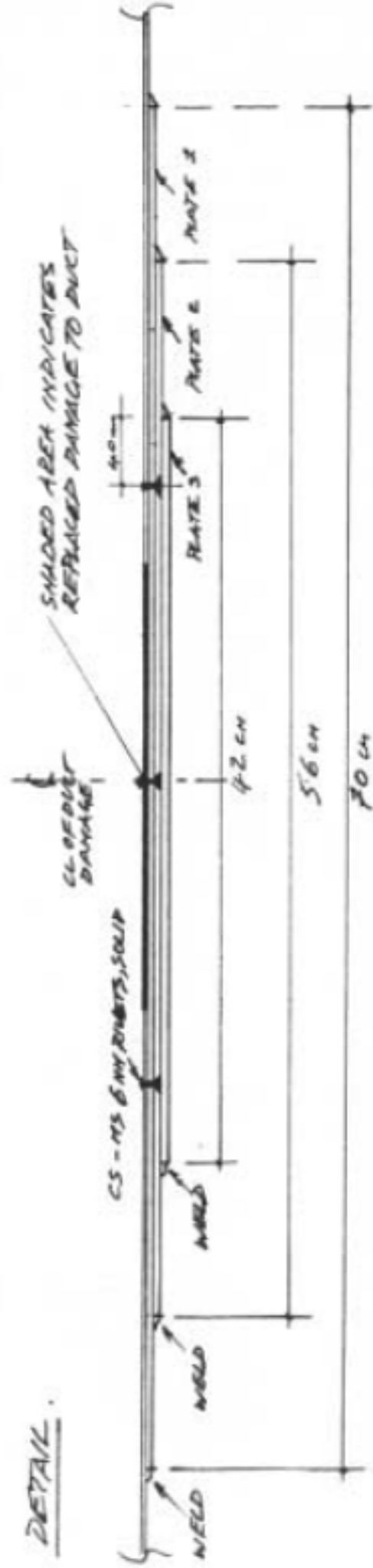


DRAWING 1C

LONGITUDINAL SCHEMATIC DRAWING
SHOWING DIMENSIONAL POSITIONING
OF NEW REINFORCEMENT
V.S. NOT TO SCALE.
SEE DETAIL FOR DIMENSIONS OF
REINFORCEMENT PLATES



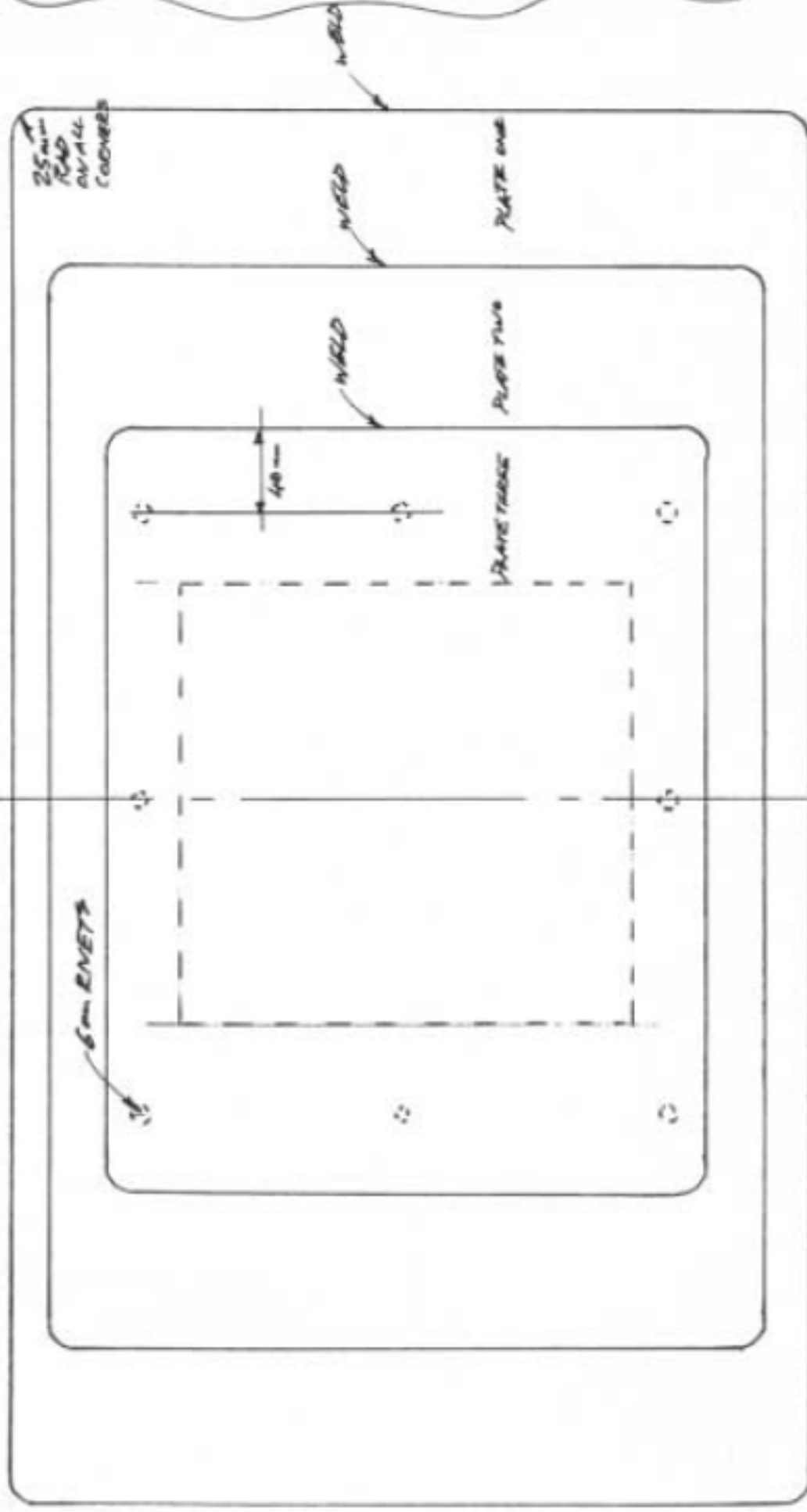
DETAIL.



DRAWING 2.D - NOT TO SCALE

SCHEMATIC DRAWING SHOWING RELATIVE
POSITIONS OF 6mm RIVETS
ALL REINFORCEMENT PLATES TO HAVE
2.5mm RADII AT CORNERS

TRANSVERSE C/L OF
DUCT DAMAGE



Design modifications carried out by London Duck Tours Ltd following the suspension of its operations after the *Cleopatra* fire

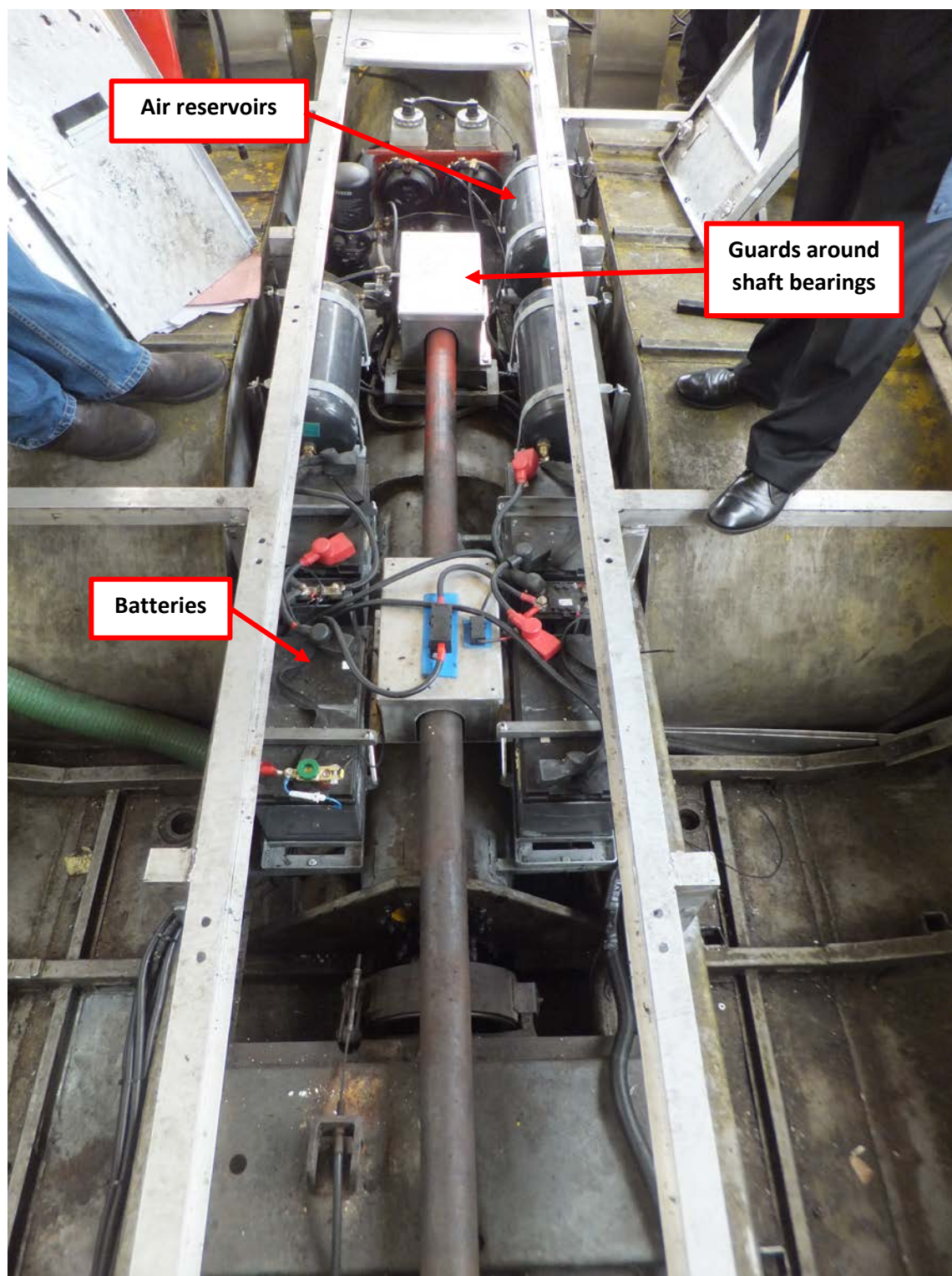


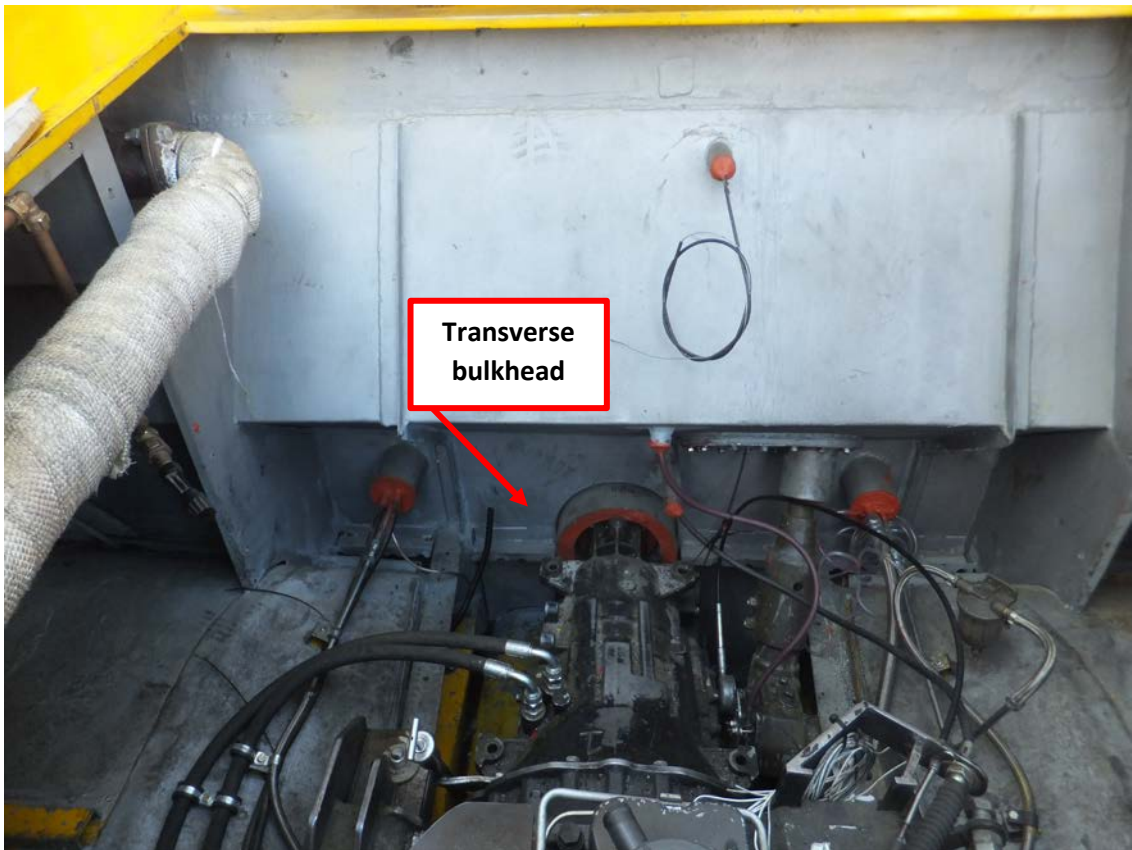
Fuel tank(s) moved forward from aft compartment



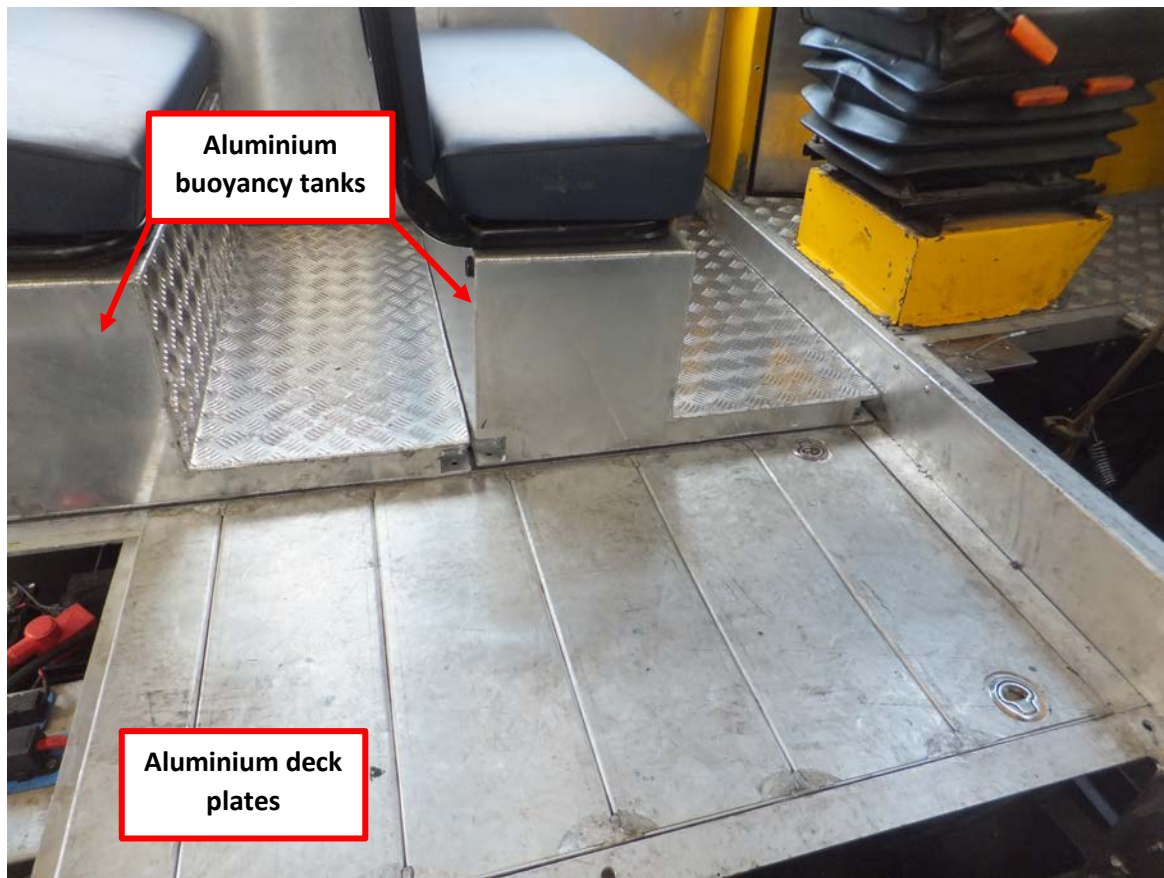
Machinery removed from port and starboard void spaces below the passenger compartment

Below deck auxiliary machinery moved to central void space





Watertight transverse bulkhead separating the engine compartment from the passenger space.



Aluminium deck plates and airtight buoyancy tanks

Cooling air flow modifications

