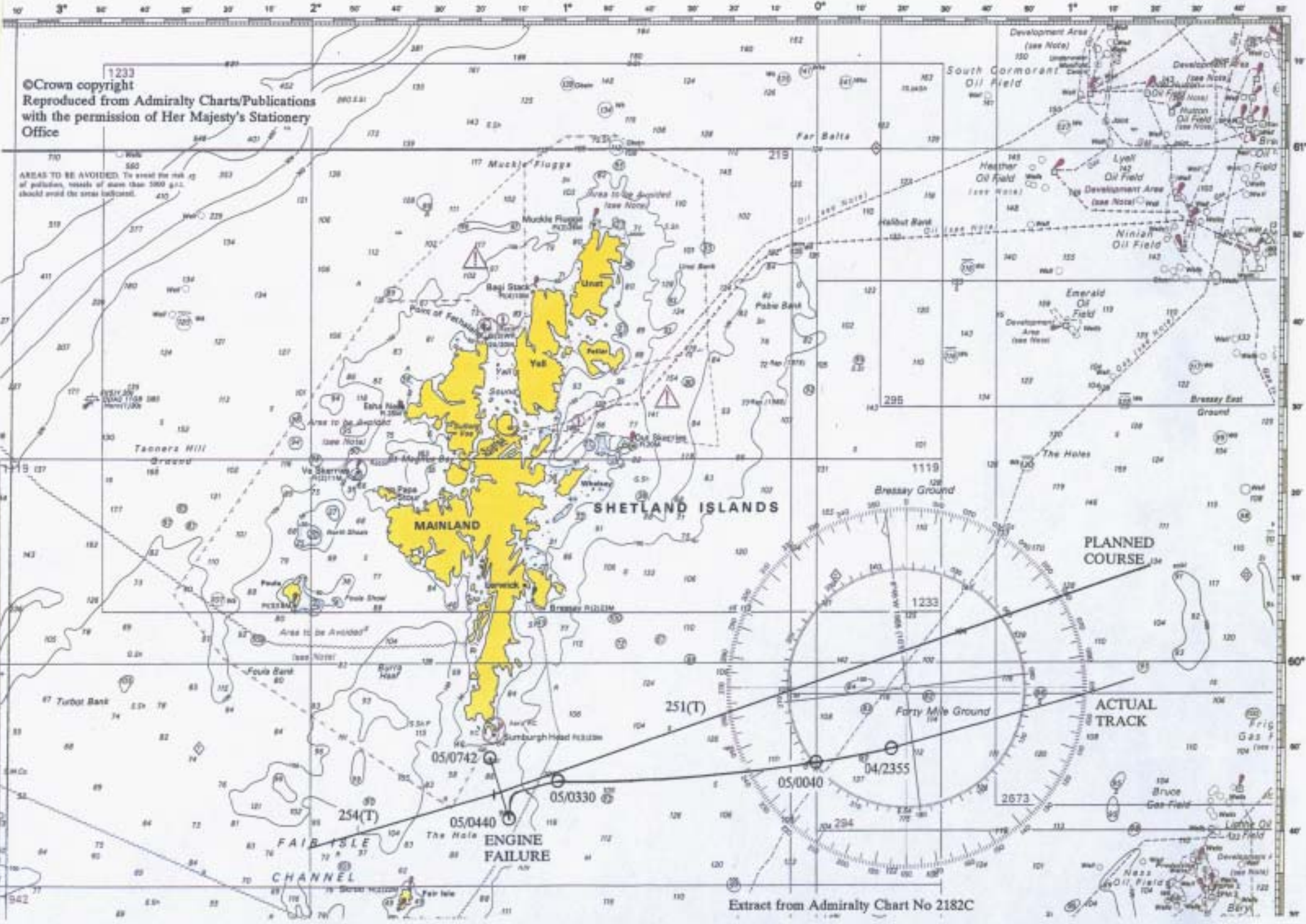


Figure 1	Route of BRAER on approaching Shetland
Figure 2	Drift of BRAER
Figure 3	Photograph of BRAER aground
Figure 4	Plan showing position of air pipes and stowage of spare pipes
Figure 5	Photographs of the port double bottom diesel oil tank aft air pipe on sister ships
Figure 6	Photograph of BRAER showing broken rails
Figure 7	Photographs of the diesel oil settling and service tanks common air pipe on sister ships
Figure 8	General Arrangement Plan of BRAER
Figure 9	View looking forward on a sister ship
Annex 1	IMO Resolution A.535(13)
Annex 2	Draft Amendments to SOLAS Chapter V on Emergency Towing Arrangements on Tankers

© Crown copyright
Reproduced from Admiralty Charts/Publications
with the permission of Her Majesty's Stationery
Office

AREAS TO BE AVOIDED: To avoid the risk of
pollution, vessels of more than 1000 GRT
should avoid the areas indicated.



Extract from Admiralty Chart No 2182C

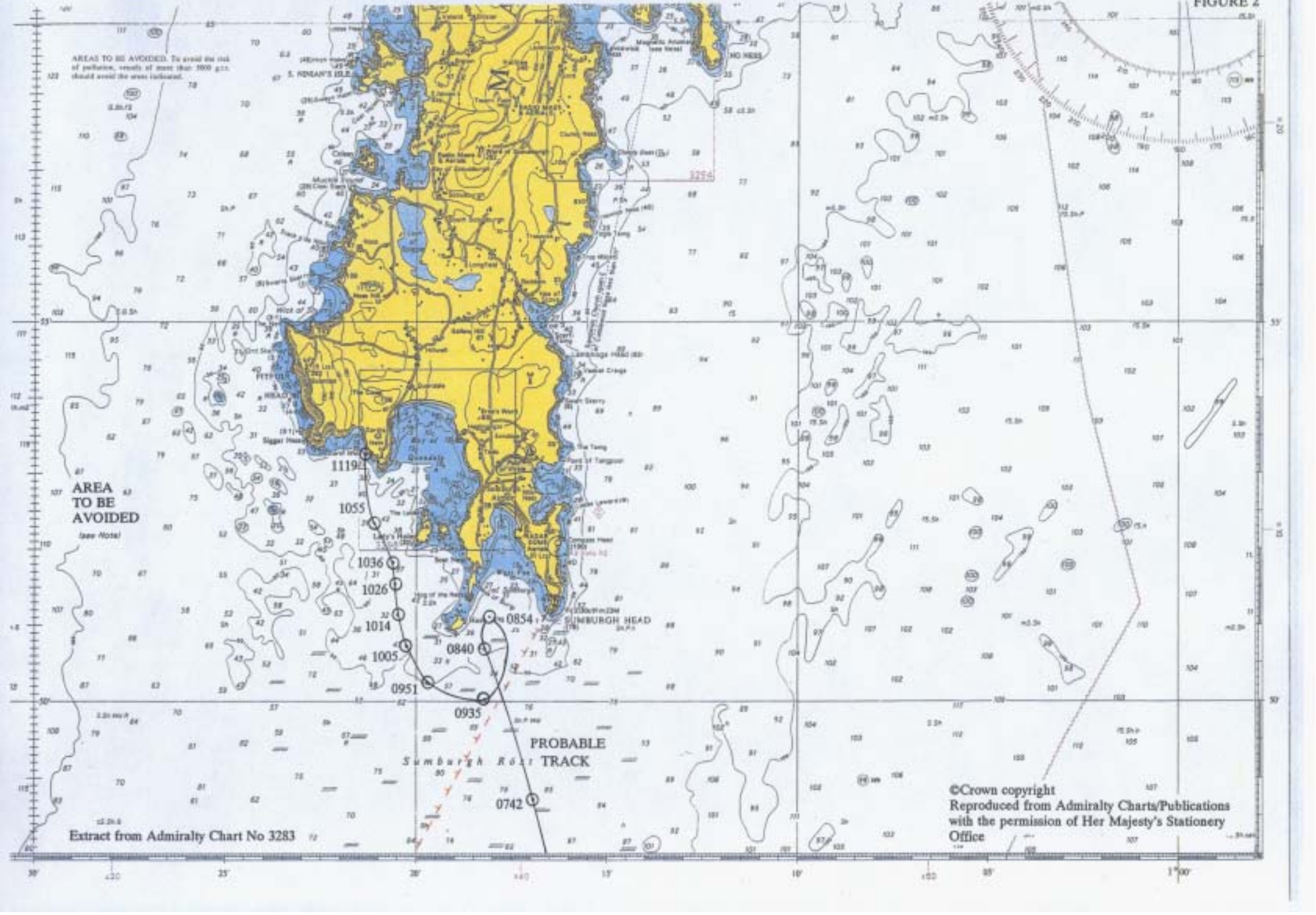
AREAS TO BE AVOIDED. To avoid the risk of pollution, vessels of more than 1000 GRT should avoid the areas indicated.

AREA TO BE AVOIDED
See Note!

PROBABLE
Sumburgh ROU TRACK

Extract from Admiralty Chart No 3283

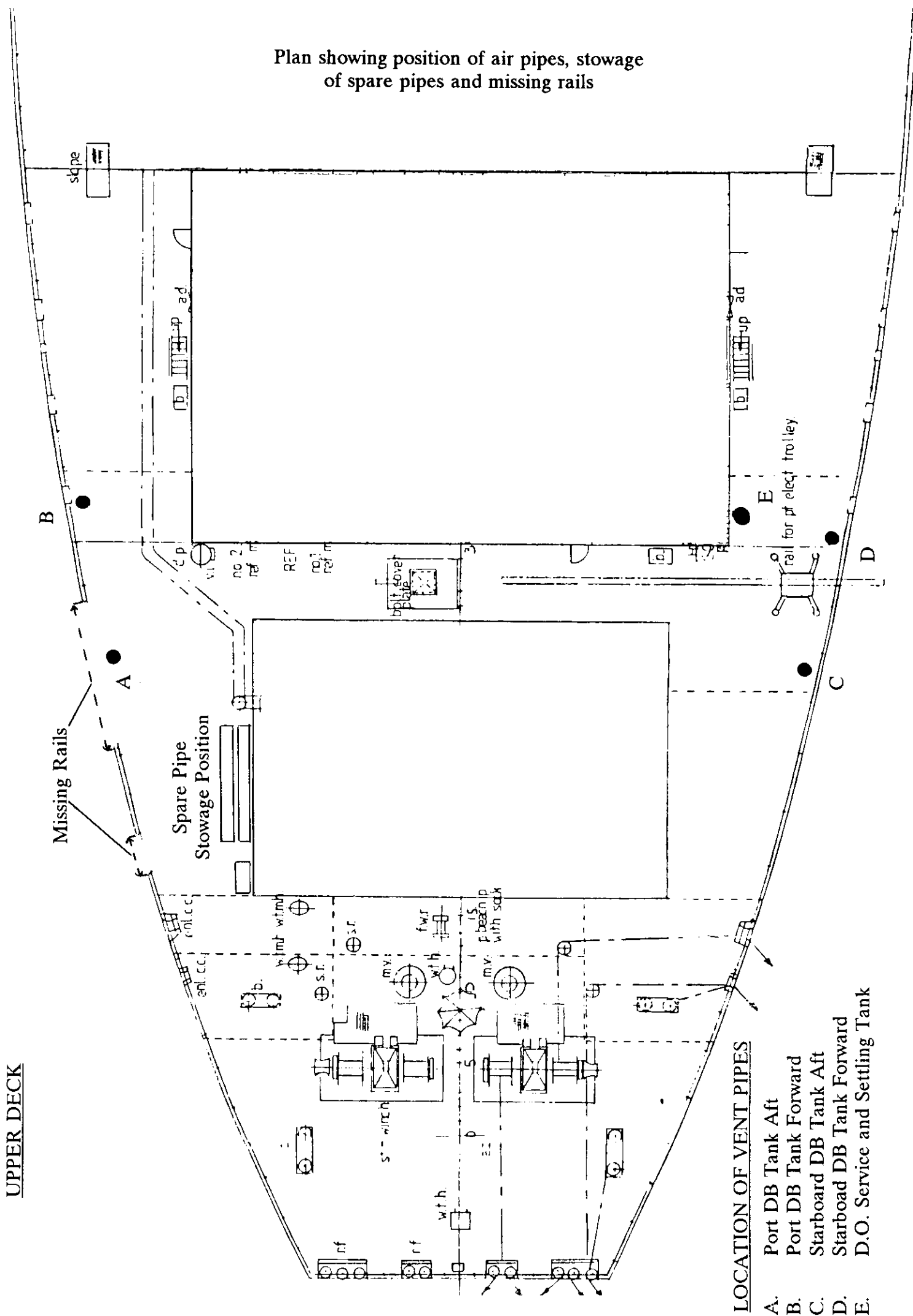
©Crown copyright
Reproduced from Admiralty Charts/Publications
with the permission of Her Majesty's Stationery
Office





BRAER aground showing loose pipes,
port and starboard sides aft

Plan showing position of air pipes, storage of spare pipes and missing rails



UPPER DECK

LOCATION OF VENT PIPES

- A. Port DB Tank Aft
- B. Port DB Tank Forward
- C. Starboard DB Tank Aft
- D. Starboard DB Tank Forward
- E. D.O. Service and Settling Tank

Photograph courtesy of Vine Abel & Co. Singapore Pte Ltd



Photograph courtesy of the Marine Department, Republic of Singapore



Port double bottom diesel oil tank, aft air pipe
(Photographs taken on sister ships)



BRAER aground showing broken rails port side aft in way of air pipes

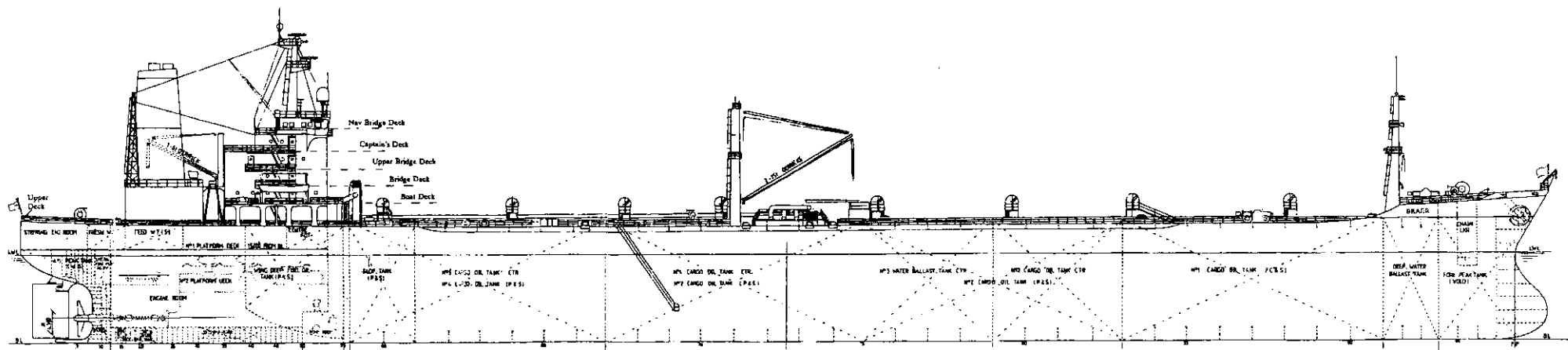
Photograph courtesy of Vine Abel & Co. Singapore Pte Ltd



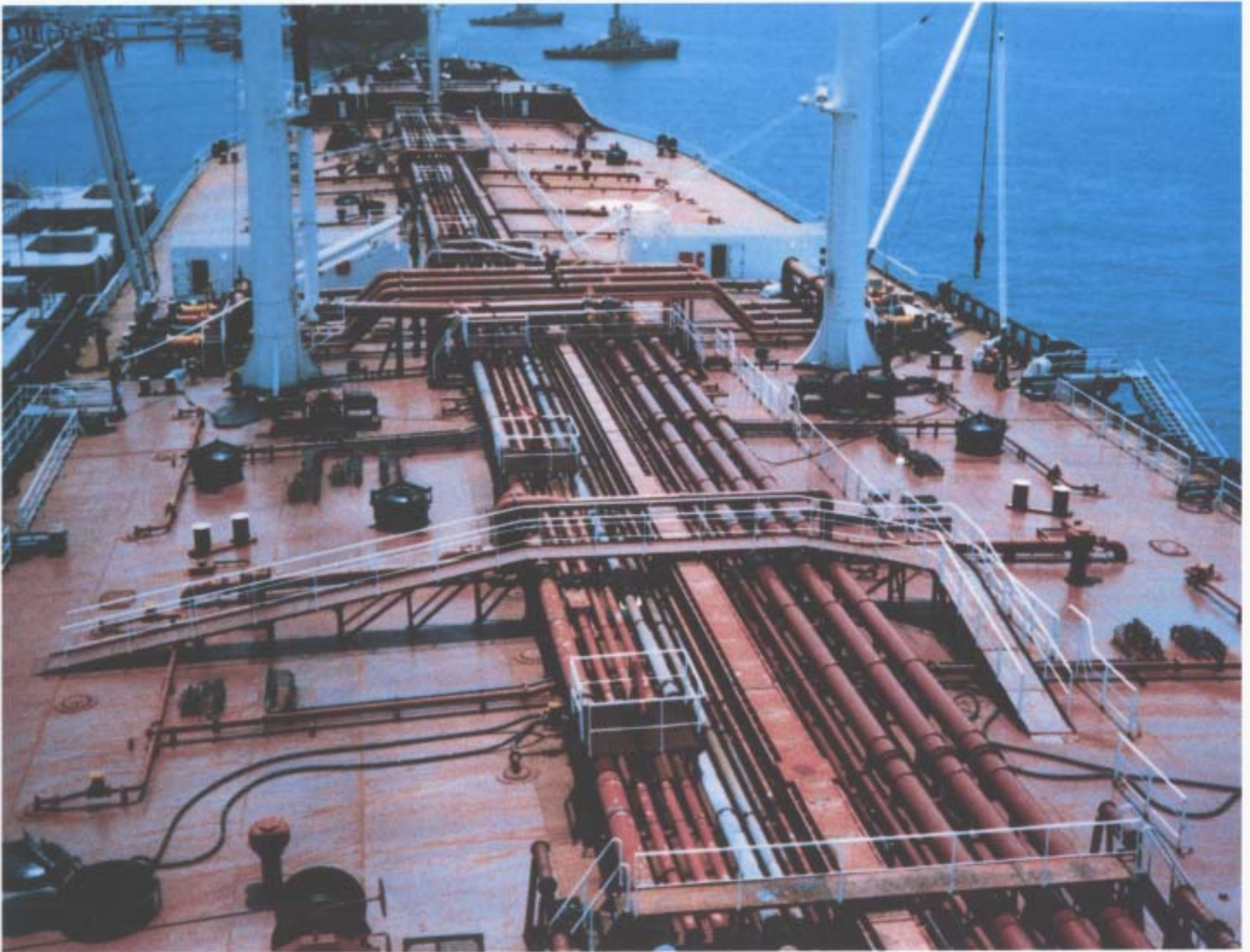
Photograph courtesy of the Marine Department, Republic of Singapore



Common air pipe to diesel oil settling and service tanks, starboard side upper deck
(Photographs taken on two sister ships)



General arrangement "BRAER"



View of upper deck looking forward, taken on sister ship