

Vital Images, Inc.
October 21, 2013
URGENT: MEDICAL DEVICE RECALL
(FIELD SAFETY NOTICE)
Vitreacore® Software

FSCA-identifier: 2134213-2013-00004

Type of action: Manufacturer's advice for workaround of a potential image orientation inaccuracy in certain 16-bit Secondary Capture snapshots

Dear Device Customer/Distributor,

The purpose of this communication is to provide information and recommendations related to the potential for incorrect and possibly reversed image orientation for certain snapshots taken in VitreaCore software versions 6.0, 6.1, 6.2, 6.3 (except 6.3.1), 6.4 (except 6.4.4 and 6.4.5), as well as their upgrades, and 6.5.

Reason for Voluntary Recall

Nature of software issue:

An incorrect image orientation may occur when loading a study into the 3D Viewer in VitreaCore, taking a 16-bit Secondary Capture snapshot and loading this snapshot in a DICOM viewer. When performing these actions, the orientation markers displayed in the viewport are ignored when creating the orientation information stored in the DICOM header. Instead, the created orientation information will always be the orientation of the original acquisition. This results in a situation where the orientation markers displayed when viewing the snapshot in a DICOM viewer may be incorrect. In very rare circumstances, this could result in a situation where the orientation markers are flipped (L/R to R/L). The incorrect orientations may be presented in images viewed with VitreaCore's 2D Viewer, or in PACS and other 2D viewers and exported to such repositories.

Potential scenarios which exhibit the issue:

Scenarios in which a snapshot could have incorrect orientation markers include, but are not limited to the following:

Scenario-1: Loading a prone series and taking a snapshot of the axial, coronal, or sagittal viewport:

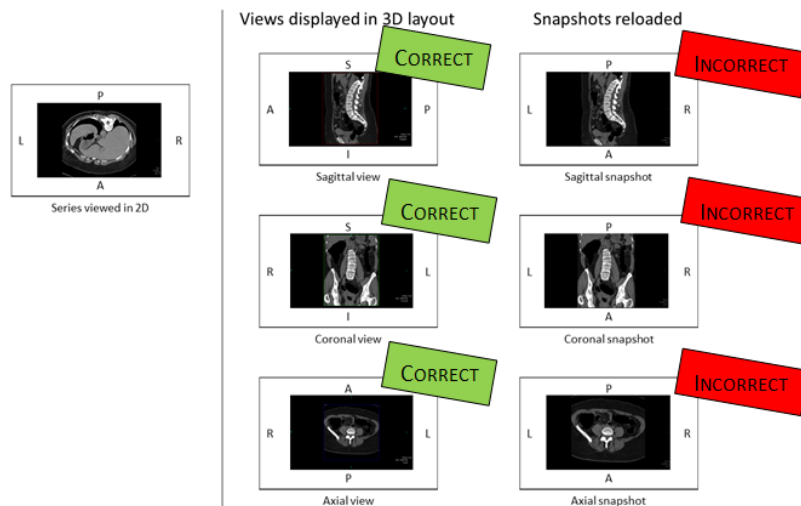


Fig-1: Prone Series

Scenario-2: Loading a supine series and taking a snapshot of the coronal or sagittal viewport:

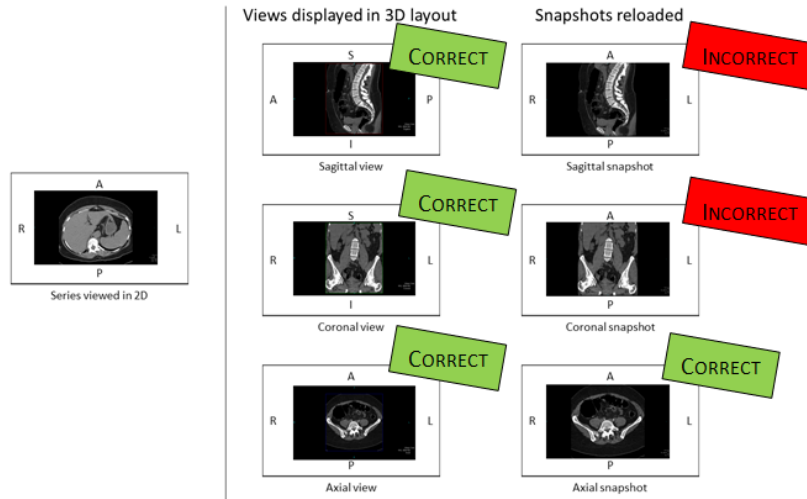


Fig-2: Supine Series

Scenario-3: Loading a supine series, switching the view to oblique, rotating the axial viewport such that the orientation markers change, and taking a snapshot:

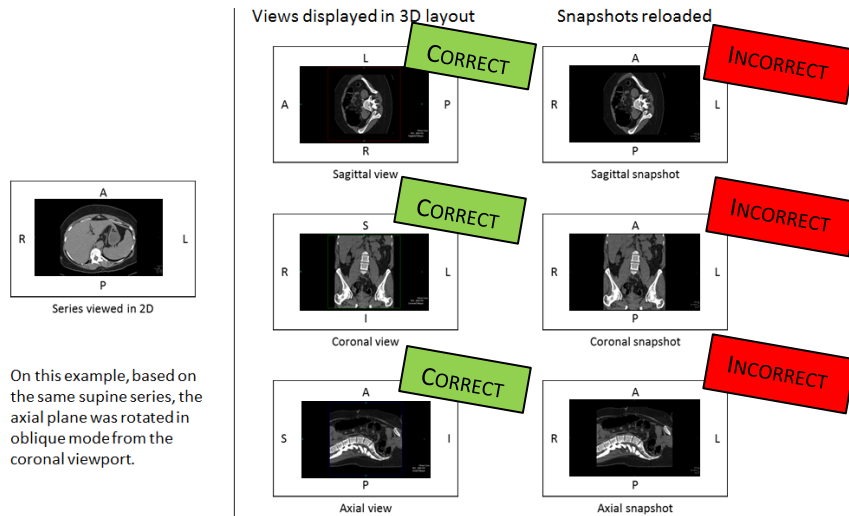


Fig-3: Oblique Mode

Risk to Health

To date, no customer reports of the issue have been received. This issue was found through internal testing and the overall probability of the error is remote.

Nonetheless, the potential incorrect image orientation may result in the health care provider scheduling unnecessary diagnostic procedures.

How to confirm if the snapshots are correct:

From the Report window, the snapshot can be double-clicked to view. The orientation markers are CORRECT

when viewed from the Report window. From the study directory, view the snapshot in 2D. If the orientation markers of the image match the orientation markers displayed in the Report window, the snapshot has the correct orientation markers. If they do not match, the snapshot has incorrect orientation markers.

Please note that the issue does **NOT** occur if:

- The snapshot is taken in 2D mode; or
- The snapshot taken is a 24-bit (RGB) Secondary Capture snapshot; or
- The snapshot is taken in other Vital Images products, such as VitreaWorkstation or VitreaAdvanced.

Actions to be Taken by Customer

If this issue occurs, you can view the snapshot from the Report window by double-clicking it. This will display the correct orientation markers.

Recommended Next Steps:

1. Use the information described in this letter to ensure that all further snapshots taken in VitreaCore have correct orientation markers before making any decisions based on displayed orientation markers.
2. Notify your users of the issue described in this letter.
3. Prior exams utilizing images from VitreaCore should be verified for patient outcomes.
4. Please read the added warning for VitreaCore software in the attached labeling addendum (VPMC-13206) and use it for your future reference.
5. Please send the signed enclosed Effectiveness Check form to fieldnotices@vitalimages.com or fax to +1 952-540-3717. **Please complete and return this form even if you are not currently impacted by this action.** This information is essential in order to maintain recall effectiveness information required by regulatory agencies.

Actions Being Taken by Vital Images

No upgrade is being provided due to the “remote” probability and the available workaround for the issue. This issue is being corrected as a part of our service updates for the future software releases.

Vital Images Contact Information:

If you have questions, direct Vital Images customers and customers of Toshiba America Medical Systems (TAMS) should contact Vital Images Customer Support at +1-800-208-3005, or by e-mail to support@vitalimages.com; customers through a distributor will be contacted by that distributor.

We apologize for any disruption that this issue may cause. Vital Images is committed to providing your facility with high quality and safe products.

The undersigned, on behalf of Vital Images, confirms that this Notice has been provided to the appropriate regulatory agencies.

Sincerely,



Jim Litterer
Vice President, Operations
Vital Images, Inc.

Enclosure

Page: 3/4

MEDICAL DEVICE RECALL RETURN RESPONSE
Acknowledgement and Receipt From
PLEASE FILL OUT AND RETURN

The undersigned confirms that this Notice regarding VitreaCore Software has been received and understood. The undersigned further agrees to notify users of this error.

RECALL- VitreaCore Software – Image Orientation Issue

VitreaCore Software Build / Version Number: _____

I have read and understand the recall instructions provided in the 21st October, 2103 letter. Yes No

Any adverse events associated with recalled product? Yes No

If yes, please explain:

- We do not utilize affected versions of VitreaCore Software at this/these facility(s).
- We do utilize affected versions of VitreaCore Software versions at this/these facility(s).
- I am a distributor. I have identified and notified my customers that were shipped or may have been shipped the affected versions of VitreaCore.

FACILITY NAME(S)		
Location(s)/ Address		
Printed Name		
Title		
Contact Information	Phone	
	Email	
Signature		

Submit form to fieldnotices@vitalimages.com **or** fax to +1 952-540-3717.

Adverse reactions or quality problems experienced with the use of this product may be reported to the FDA's MedWatch Adverse Event Reporting program either online, by regular mail or by fax.

Vitreacore[®] Labeling Addendum

Copyright © 1997-2013 Vital Images, Inc. All rights reserved. Date of Publication October, 2013.

VitreWorkstation® protected by U.S. Patents 5,986,662; 6,130,671; 6,219,059; 7,031,504; 7,136,064; 7,362,329; 7,574,029; 7,590,272; 7,660,481; 7,929,748; 7,991,210; 8,214,756; 8,249,687 Other Patents Pending in the U.S. and other countries.

VitreAdvanced® protected by U.S. Patents 5,986,662; 6,130,671; 6,219,059; 7,031,504; 7,136,064; 7,362,329; 7,574,029; 7,590,272; 7,660,481; 7,929,748; 7,991,210; 8,214,756; 8,249,687 Other Patents Pending in the U.S. and other countries.

VitreCore® protected by U.S. Patents 5,986,662; 6,130,671; 6,219,059; 7,039,723; 7,136,064; 7,362,329; RE42,952; Other Patents Pending in the U.S. and other countries.



VPMC-13206A VitreaCore® Labeling Addendum

This publication is valid for the VitreaCore software versions 6.0, 6.1, 6.2, 6.3 (except 6.3.1), 6.4 (except 6.4.4 and 6.4.5), as well as their upgrades, and 6.5.

No part of this work may be reproduced, stored in a retrieval system, or transmitted in any form or by any means, electronic or mechanical, including photocopying and recording, or by any information storage or retrieval system without permission in writing from Vital Images.

Trademarks

Vital Images, Vitrea, VitreaAdvanced, ViTAL, and ViTAL U are registered trademarks of Vital Images, Inc.

All other marks are property of their respective owners.

Restricted Rights Legend

If this software or documentation is delivered to the Department of Defense (DOD) of the U.S. Government, it is delivered with Restricted Rights as follows:

Use, duplication or disclosure of the software by the U.S. Government is subject to restrictions as set forth in subparagraph (c)(1)(ii) of the Rights in Technical Data and Computer Software clause at DFARS 252.227-7013.

If this software or documentation is delivered to any unit or agency of the U.S. Government other than DOD, it is delivered with Restricted Rights and use, duplication or disclosure by the U.S. Government is subject to the restrictions as set forth in FAR 52.227-19 (b)(3). If the software or documentation is delivered to NASA, it is delivered with Restricted Rights subject to the restrictions set forth in 18-52.227-86(d) of the NASA FAR Supplement.

Limits of Liability and Disclaimer of Warranty

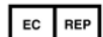
VITAL IMAGES SHALL HAVE NO LIABILITY OF ANY KIND FOR ANY DIRECT, INCIDENTAL OR CONSEQUENTIAL DAMAGES BASED ON ANY DEFECT, FAILURE OR MALFUNCTION OF THE SOFTWARE, OR USE OF ANY VITAL IMAGES DOCUMENTATION, WHETHER THE CLAIM IS BASED UPON WARRANTY, CONTRACT, TORT OR OTHERWISE. VITAL IMAGES MAKES NO WARRANTY, EXPRESS OR IMPLIED, INCLUDING BUT NOT LIMITED TO, ANY WARRANTY OF MERCHANTABILITY OR FITNESS FOR A PARTICULAR PURPOSE WHETHER ARISING FROM STATUTE, COMMON LAW, CUSTOM OR OTHERWISE.

Notice of Confidentiality

This software and the information in this software including, but not limited to, the ideas, concepts and know-how are proprietary, confidential and trade secret to Vital Images, and the information contained therein shall be maintained as proprietary, confidential and trade secret to Vital Images and shall not be copied or reproduced in any form whatsoever. This software and any information contained therein shall not be disclosed to anyone other than authorized representatives of the user's employer, who is contractually obligated not to disclose same without the express written consent of Vital Images. The user of this software and any information contained therein shall not attempt to discern Vital Images' confidential and trade secret information and shall not reverse compile, disassemble, or otherwise reverse engineer this software or any information contained therein.

Software License Notice

This software is a licensed product of and is distributed by Vital Images, and may only be used according to the terms of that license on the system identified in the License Agreement. In the event of any conflict between these terms and the terms of any written agreement or agreement assented to through electronic means with Vital Images, the terms of such written or assented agreement shall control.



MDSS GmbH
Schiffgraben 41
30175 Hannover, Germany

Australian Sponsor:
CELEO Pty Ltd
15 Alvarado Court
Broadbeach Waters, QLD 4218
Australia

Australian Sponsor:
Toshiba Australia Pty Ltd
PO Box 350
North Ryde, NSW 1670
Australia

CELEO Pty Ltd. and Toshiba Australia Pty Ltd are authorized sponsors in Australia and act on behalf of Vital Images, Inc. in the communication of safety-related incidents and regulatory matters with Therapeutic Goods Administration in Australia. Distributors are still the first line of communication with their customers regarding service and complaints.



Manufactured by: Vital Images, Inc.; 5850 Opus Parkway, Suite 300; Minnetonka, MN, US; 55343; Phone 866.433.4624

Table of Contents

INTRODUCTION..... 1

ADDITIONAL WARNING 1

CONTACT US..... 1

Introduction

This VitreaCore labeling addendum is for VitreaCore software versions 6.0, 6.1, 6.2, 6.3 (except 6.3.1), 6.4 (except 6.4.4 and 6.4.5), as well as their upgrades, and 6.5. This addendum provides new information regarding an additional warning for the VitreaCore software.




CAUTION: For general Safety and Regulatory Considerations, refer to the About Vital® Medical Imaging Software document.



CAUTION: Federal law restricts this device to sale by or on the order of a physician, as directed by 21 CFR 801.109(b)(1).

Additional Warning

Version	Products	Description
6.0, 6.1, 6.2, 6.3 (except 6.3.1), 6.4 (except 6.4.4 and 6.4.5), as well as their upgrades, and 6.5.	VitreaCore	 CAUTION: It is possible to create a snapshot of the 3D MPR view that displays incorrect orientation markers when it is loaded into a 2D DICOM viewer, including VitreaCore 2D viewer, PACS, and other 2D viewers. It is important that you verify the orientation markers by reviewing the snapshot in the Report window. Double-click the snapshot thumbnail in the Findings Tray. This view will show correct orientation markers. If the orientation markers in the Report window view match the 2D view, the snapshot has the correct orientation markers. If the two views do not match, the snapshot has incorrect orientation markers. Using a snapshot with incorrect orientation markers could lead to unnecessary diagnostic procedures.

Contact Us

- For general, non-technical support questions, please contact us through our Web site: www.vitalimages.com.
- For customer technical support, please contact us:
 - In the U.S., call the Customer Support line at 1.800.208.3005, or send an email to support@vitalimages.com.
 - Outside the U.S., contact your Vital distributor.
- For a printed current version of the About Vital® Medical Imaging Software document, please contact Customer Support.