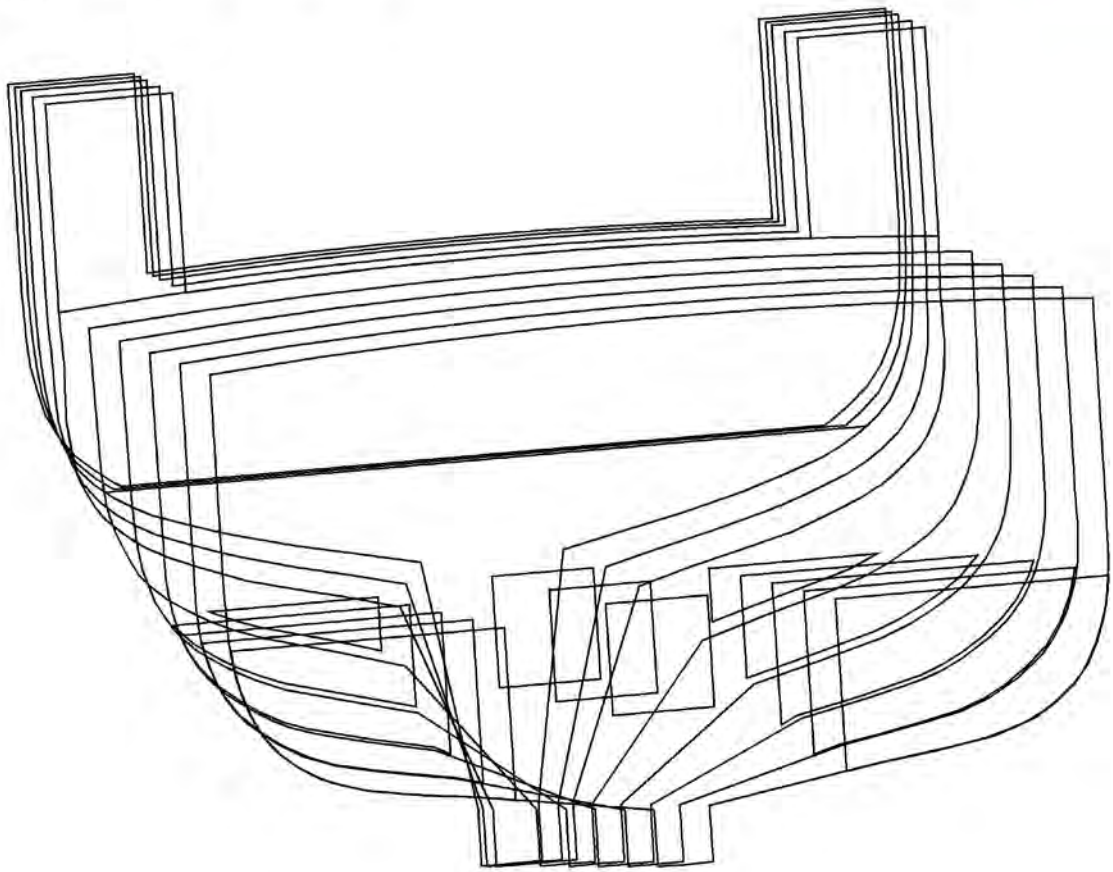


Engine room flooding data (*Audacious*)

SECTION PLOT: ENGINE ROOM FR4-19
Isometric view

AUDACIOUS BF 83



COMPARTMENT DATA

Compartment.....: ENGINE ROOM Fr4-19

Vessel.....: AUDACIOUS BF 83

Soundings/ullages.: Measured from vertical sounding pipe

Sounding base.....: 8.585 metres from compartment highest point

Permeability.....: 95%

LCG datum.....: AFT PERP (STN 0) (-ve aft, +ve forward)

TCG datum.....: Centreline (+ve Port, -ve Starboard)

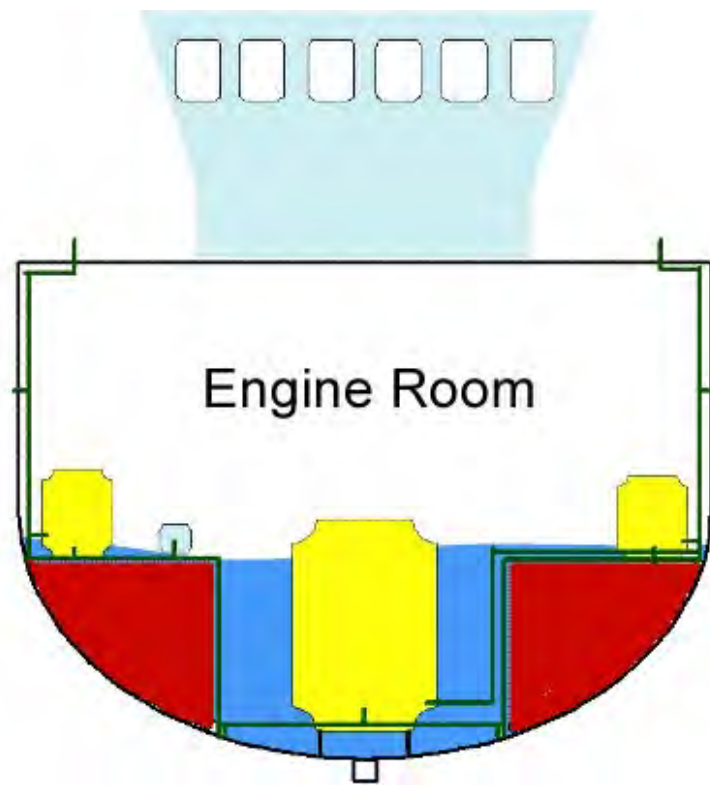
VCG datum.....: LINES PLAN BASE (+ve above, -ve below)

Free surface data.: Computed at 0 degrees heel

/	%	/	Capacity	/	Capacity	/	Sounding	/	Ullage	/	LCG	/	TCG	/	VCG	/	FSM	/
/	full	/	metres^3	/	t.(SG:1.025)	/	metres	/	metres	/	metres	/	metres	/	metres	/	t.metres	/
-----+-----+-----+-----+-----+-----+-----+-----+-----+-----																		
/	100%	/	251.052	/	257.329	/	8.585	/	0.000	/	5.788	/	0.000	/	3.241	/	0.000	/
/	95%	/	238.500	/	244.462	/	6.411	/	2.174	/	5.917	/	0.000	/	3.101	/	277.833	/
/	90%	/	225.947	/	231.596	/	6.016	/	2.569	/	5.978	/	0.000	/	2.997	/	470.941	/
/	85%	/	213.395	/	218.729	/	5.810	/	2.775	/	5.997	/	0.000	/	2.892	/	507.428	/
/	80%	/	200.842	/	205.863	/	5.677	/	2.908	/	6.001	/	0.000	/	2.789	/	530.849	/
/	75%	/	188.289	/	192.997	/	5.492	/	3.093	/	6.020	/	0.000	/	2.681	/	558.544	/
/	70%	/	175.737	/	180.130	/	5.307	/	3.278	/	6.040	/	0.000	/	2.572	/	556.037	/
/	65%	/	163.184	/	167.264	/	5.123	/	3.462	/	6.060	/	0.000	/	2.462	/	553.547	/
/	60%	/	150.631	/	154.397	/	4.937	/	3.648	/	6.086	/	0.000	/	2.346	/	551.034	/
/	55%	/	138.079	/	141.531	/	4.751	/	3.834	/	6.116	/	0.000	/	2.226	/	542.984	/
/	50%	/	125.526	/	128.664	/	4.570	/	4.015	/	6.161	/	0.000	/	2.107	/	534.067	/
/	45%	/	112.974	/	115.798	/	4.379	/	4.206	/	6.194	/	0.000	/	1.974	/	524.689	/
/	40%	/	100.421	/	102.931	/	4.183	/	4.402	/	6.224	/	0.000	/	1.831	/	505.403	/
/	35%	/	87.868	/	90.065	/	3.984	/	4.601	/	6.256	/	0.000	/	1.695	/	478.073	/
/	30%	/	75.316	/	77.199	/	3.774	/	4.811	/	6.272	/	0.000	/	1.521	/	449.257	/
/	25%	/	62.763	/	64.332	/	3.553	/	5.032	/	6.274	/	0.000	/	1.313	/	354.710	/
/	20%	/	50.210	/	51.466	/	3.359	/	5.226	/	6.231	/	0.000	/	1.046	/	229.172	/
/	15%	/	37.658	/	38.599	/	3.075	/	5.510	/	6.226	/	0.000	/	0.775	/	45.130	/
/	10%	/	25.105	/	25.733	/	2.385	/	6.200	/	6.327	/	0.000	/	0.390	/	18.779	/
/	5%	/	12.553	/	12.866	/	1.640	/	6.945	/	6.192	/	0.000	/	-0.050	/	12.806	/

/	Sounding	/	Ullage	/	%	/	Capacity	/	Capacity	/	LCG	/	TCG	/	VCG	/	FSM	/
/	metres	/	metres	/	full	/	metres^3	/	t.(SG:1.025)	/	metres	/	metres	/	metres	/	t.metres	/
-----+-----+-----+-----+-----+-----+-----+-----+-----+-----																		
/	8.585	/	0.000	/	100.0	/	251.052	/	257.329	/	5.788	/	0.000	/	3.241	/	0.000	/
/	8.500	/	0.085	/	99.9	/	250.760	/	257.029	/	5.792	/	0.000	/	3.236	/	71.330	/
/	8.000	/	0.585	/	99.2	/	248.958	/	255.182	/	5.814	/	0.000	/	3.209	/	71.330	/
/	7.500	/	1.085	/	98.4	/	247.004	/	253.179	/	5.838	/	0.000	/	3.182	/	71.330	/
/	7.000	/	1.585	/	98.1	/	246.266	/	252.423	/	5.856	/	0.000	/	3.169	/	71.330	/
/	6.500	/	2.085	/	96.6	/	242.535	/	248.598	/	5.916	/	0.000	/	3.136	/	222.999	/
/	6.000	/	2.585	/	88.7	/	222.649	/	228.215	/	5.975	/	0.000	/	2.971	/	473.776	/
/	5.500	/	3.085	/	75.2	/	188.818	/	193.539	/	6.018	/	0.000	/	2.686	/	558.651	/
/	5.000	/	3.585	/	61.7	/	154.880	/	158.752	/	6.076	/	0.000	/	2.386	/	551.885	/
/	4.500	/	4.085	/	48.2	/	120.901	/	123.924	/	6.174	/	0.000	/	2.059	/	530.642	/
/	4.000	/	4.585	/	35.4	/	88.858	/	91.080	/	6.254	/	0.000	/	1.708	/	480.290	/
/	3.500	/	5.085	/	23.2	/	58.126	/	59.579	/	6.246	/	0.000	/	1.206	/	320.216	/
/	3.000	/	5.585	/	14.4	/	36.114	/	37.017	/	6.241	/	0.000	/	0.731	/	37.128	/
/	2.500	/	6.085	/	10.8	/	27.112	/	27.790	/	6.319	/	0.000	/	0.453	/	20.604	/
/	2.000	/	6.585	/	7.4	/	18.581	/	19.045	/	6.372	/	0.000	/	0.192	/	17.260	/
/	1.500	/	7.085	/	3.8	/	9.489	/	9.726	/	6.007	/	0.000	/	-0.184	/	10.118	/
/	1.000	/	7.585	/	1.6	/	3.990	/	4.090	/	5.516	/	0.000	/	-0.544	/	3.139	/
/	0.500	/	8.085	/	0.5	/	1.252	/	1.284	/	5.008	/	0.000	/	-0.875	/	0.143	/

Showing cross-section of well-type engine design (*Audacious*)



UKFVC issued December 2008 (*Audacious*)

UNITED KINGDOM FISHING VESSEL CERTIFICATE

Issued under the Merchant Shipping Act 1995

PARTICULARS OF VESSEL

Name of Vessel	AUDACIOUS			
Official (RSS) Number	C16677	Fishing Number	BF 83	
Port of Registry	BANFF	Date on which keel was laid	1998	
Registered Length	23.95	Metres	Overall Length	27.60 Metres

THIS IS TO CERTIFY

- that the vessel has been surveyed in accordance with section 1.3 of the provisions of the Code of Safe Working Practice for the Construction and Use of 15 metres (LOA) to less than 24 metres (L) Fishing Vessels;
- that the vessel has been found to comply with the requirements of the Code that are applicable to the vessel, (for vessels that are **classed** see overleaf),
- that the life saving appliances are sufficient for a total of **10** persons;
- that the vessel is fitted with the lights, shapes and sound signals to comply with the International Regulations for the Prevention of Collisions at Sea and is fitted with navigational equipment and carries nautical publications in accordance with the Code;
- that the vessel complies with the requirements of the (Radio) (Fishing Vessels) Regulations that are applicable to the vessel and is equipped for operation in sea area(s) **A1 A2 A3** only.
- that an Exemption Certificate has been issued / ~~has not been issued.~~

Completion date of the survey on which this certificate is based **14 August 2008**

This Certificate is valid until **31 December 2013** subject to a satisfactory inspection in accordance with 1.3.6 of the Code being completed not less than 24 months and not more than 36 months from the completion date of the ~~initial~~ / renewal survey.

Place **Aberdeen Marine Office** Signed _____
(Signature of Authorised Official issuing the Certificate)

Date **10 December 2008**

Name _____

INSPECTION (Code 1.3.6)

It is confirmed that the vessel continues to comply with the requirements of the Code that are applicable to this vessel and that annual self-certification declarations have been completed by the owner. The inspection should be completed between **31 December 2010** and **31 December 2011**

Place _____ Signed _____
(Place of Inspection) (Signature of Authorised Official)

Date _____ Name _____
(Date of Inspection) (Name of Authorised Official)

MCA Load line inspection report July 2011 (*Audacious*)



Maritime and Coastguard Agency

REPORT OF INSPECTION* AND/OR SURVEY*

Of *United Kingdom /

*Dependent Territory / *Foreign Vessel

(*delete as appropriate)

Page 2 of 2

MCA Copy

2. Name of Ship: IMPACIOUS	BF 83	6. IMO No. or Call Sign or Official no: 016677
9. Date of Inspection/Survey: 20/07/11	10. Place of Inspection/Survey: FRASERBURGH GBFR	

15. Nature of Deficiency

No:	15. (a) Code	I/S:	(b) Description of Deficiency	(c) Regulation references	16. Action Code:	Notification of Rectification of Deficiency (✓)	Date of Rectification
1	0910	S	DOGS - FISH HOPPER STBD DOGS SEIZED - FORWARD PORT STONE & HATCHES AFT PORT ESCAPE, FORWARD PORT DOGS SEIZED - MAIN DECK UNLOADING HATCH	100 PR SPACE FWD INDICATED	17		
2	0910	S	DOGS SEIZED - MAIN DECK UNLOADING HATCH		17		
3	0910	S	3 DOGS MISSING - 2 - SC ACCESS DOOR		17		
4	0910	S	PORT EX VENT - STIFF & NO SECURING TOGGLE		17		
5	0910	S	STBD EX VENT - NOT CLOSING & BEING SPINDLE		10		
6	1070	S	CO ₂ ALARM NOT OPERATIONAL & NO LIGHT IN SPACE		17	(LATE SERVICE 2008)	
7		S	SHIPS WHISTLE NOT SATISFACTORY		17		
8	0740	S	NO EMERGENCY FIRE PUMP OPERATIONAL		10		
9	0650	S	L/Buoys REQUIRING NAME & POR MARKING		15		
10	1550	S	MAIN MAST HEAD LIGHT OUT		10		
11	1541	S	COMPASS - 2 YEAR CHECK OVERDUE (LAST 2008)		15		
12	0910	S	CABLE ACCESS PORT - AFT PORT SIDE NO COVER EX CASING		17		
13	1551	S	NO SPARE BULBS FOR SIGNALLING LAMP		17		
14	0150	S	NO IOPP ANNUAL SURVEYS SINCE ISSUE 2008		99 *		
15	0165	S	NO IAPP CERT ONSHORE/ISSUED		99 *		
16	0176	S	NO ANTI FOULING CERT		99 *		
17	1788	S	FREING PORTS CHECKED & SEIZED P17 S (4)		10		
18	0730	S	FIRE HOSE, NOZZLE & BOX MISSING PORT MAIN DECK (LOST AT SEA)		17		
19	1671	S	FPIRP HRU - DATES TO BE SCRATCHED OUT		10		

Remarks REMINDER INTERM. INSP. DUE BY 31/12/11.
 SKIPPER AGREED TO GO ROUND ALL DOORS & HATCHES AGAIN TO ENSURE SATISFACTORY OPERATIONS VESSEL NEXT TRIP CARRYING 5 FISH CRYSTAL - VESSEL ISSUED TO SKIPPER WITH CONDITIONS TO BE MET BEFORE SAILING ETC. (10 DAYS).
 SKIPPER TO ARRANGE PREWORK REQUIRED TO MCA; NO OIL/BILGE (BEING PUMPED ASHORE).

MCA Office Address Maritime & Coastguard Agency Aberdeen Regional Office 100th House 100th Quay Aberdeen AB11 5EZ Tel: +44(0)1224 397700 Fax: +44(0)1224 393725	MCA Office Stamp 	Name (duly a)	
		Signature	
		Telephone	
		Fax	
		email	mca.gov.uk

REPORT TO SURVEYOR - The Master, Skipper or Owner is requested to confirm in writing to the MCA Office as above by 21/07/11 (date that all / item Nos 17 of the outstanding requirements listed above have been met and to indicate where and when the vessel will be available for re-inspection/survey (to be deleted by surveyor if not required).

Office use only: Confirmation received on / / (date) Signature

1 Please prefix inspection deficiencies with 'I' and survey deficiencies with 'S'

2 For codes see reverse of copy

15 to 24 metre Fishing Vessels Survey/Inspection Aide-Mémoire (MCA)

INSPECTION ITEMS REQUIRED	
Lifejackets, with lights	1 per person + 2 spare
Liferafts - for sea area A1, where only 1 raft may be carried	1
Liferafts - for sea area A1 and A2 and all Beam Trawlers	2
Lifebuoys, 1 with light and smoke signal, 1 with 18 m buoyant line	2
Means of recovering a person from the water	1
Parachute Flares (SOLAS/MED Approved)	6
Hand held flares (SOLAS/MED Approved)	4
Smoke Signal (SOLAS/MED Approved)	2
Line Throwing Apparatus (SOLAS/MED Approved)	2
Fire Detection System, including audible and visual alarms (new builds show location of fire)	1
Fixed Fire Fighting System for Machinery Space	1
Fixed Fire Fighting System for Galley if Structural Fire Protection not provided	1
Power Operated Fire Pump and hose/s – 15 m ³ /hr at pressure 2 kg/m ²	1
Fire Extinguisher suitable for accommodation	3
Fire Extinguisher suitable for oil fires	2
Capacities of Fire Extinguishers Water – 9 litre, Foam – 9 litre, CO ₂ – 3 kg, Dry Powder – 4.5 kg, Multipurpose – equivalent to 9 litre fluid extinguisher	
Fire Blanket	1
LPG Flame Failure devices and Low Pressure shut off valve	1
LPG Gas detection and alarm system	1
Bilge Pump	2
Bilge Alarm, Fish Room and Machinery Space	2
Navigation Lights and Sound signals	Comply
VHF Radio Hand Held	1
Satellite EPIRB	1
Compass and Deviation Card	1
Nautical Charts and Publications	Up to date
Signalling Lamp	1
Stability Book (or Roll Test report)	On board
Safety Harnesses	2
Medical Stores and Kit to current MSN schedule	On board
Waterproof Torch	
Note; Existing vessels may still comply with the requirements of the Fishing Vessels (Safety Provisions) Rules 1975 as amended	


SURVEY / INSPECTION			
Hull	Y	N	N/A
Stability, condition of vessel			
Inclining Test or Lightship Check carried out			
Hull condition, external, internal			
Mooring and anchoring arrangements			
Decks, Bulkheads, frames condition			
Deck			
Lifeboats, Rescue Boats condition of boats			
Equipment in boats to scale required and in date			
Embarkation arrangements and launching appliances for each survival craft including relevant tests and overboard lights			
Each inflatable liferaft, the hydrostatic release unit and float-free arrangements. Note; reduced strength HRU used for smaller liferafts			
Lifebuoys, self-igniting lights, self-activating smoke signals and buoyant lines, correctly marked			
Fire pump/s, Fire main, Hydrants, hoses and nozzles, Each pump, operated separately - jet of water produced at any part of the ship whilst required pressure is maintained in fire main			
Emergency instructions available for each person on board. Copies of suitably up-dated muster list posted in conspicuous places and in a language understood by all persons on board and posters or signs in the vicinity of survival craft and their launching stations			
Portable and non-portable fire extinguishers – correct type, condition, adequately maintained, location			
Safety of operation of fishing gear, winches, wires, blocks, nets, lines etc. (LOLER & PUWER Regs)			
Ease of access to safety equipment			
Watertight doors, condition			
Hatches and Skylights			
Scuttles and Flush Scuttles			
Ventilators			
Air Pipes			
Freeing Ports			
Pilot Ladder/Boarding arrangements			
Gas Cylinders, storage, safety precautions			

SURVEY / INSPECTION			
Wheelhouse/Cabin	Y	N	N/A
Windows, condition, clear view?			
Doors, condition			
Crew have received appropriate onboard training			
Instructions for on-board maintenance of LSA are on board. Inspect any immersion suits, thermal protective aids etc.			
Lifejackets (inc, whistles, retro-reflective material and lights)			
Encourage owners and crew to wear working lifejackets at all times (Constant Wear Buoyancy Equipment)			
Table or curve of residual deviations for magnetic compass provided			
Operational and, where appropriate, maintenance manuals for all navigational equipment provided			
Charts and nautical publications necessary for intended voyage available and up-dated.			
Operation of two-way VHF radiotelephone apparatus			
Operation of EPIRB – annual test certificate provided			
Navigation lights, shapes and sound signalling equipment			
Parachute flares are not out of date			
Hand-held flares are not out of date			
Smoke signal/s are not out of date			
Line throwing rockets and strikers are not out of date			
Examining and testing fire detection and alarm system, if fitted			
As appropriate, the magnetic compass, gyro compass, radar installation, automatic radar plotting aid, echo-sounding device, speed and distance indicator, rudder angle indicator, propeller rate of revolution indicator, variable pitch propeller pitch and operational mode indicator. Automatic identification system, voyage data recorder, ECDIS, GPS.			
Fixed fire fighting system for galley, as appropriate, and means of operation clearly marked			
Fire Blanket in galley			
Garbage arrangements			
LPG Gas detection and alarm system, condition and test			
Factory Deck			
Tonnage Valves			

SURVEY / INSPECTION			
General	Y	N	N/A
Safety Signs			
SOLAS 1 Poster			
Safety belts/harnesses			
Muster List – more than 5 crew			
Machinery Spaces			
Main and Auxiliary engines, condition, guards, exhaust, no exposed high temperature surfaces, fuel lines			
Remote Electrical Stops			
Arrangements for oil fuel, lubricating oil and other flammable oils. Operation of remote means of quick closing valves on tanks that contain oil fuel, lubricating oil and other flammable oils			
Bilge pumping – test of bilge pump/s and bilge alarms			
Bilges, condition, no oil being pumped overboard. Disposal arrangements for Oily water			
Fixed fire fighting system for machinery: CO2/FM 200 etc. capacity has been checked. Distribution pipework proved clear			
Compressed air systems			
Condition of pipework, securing clips, skin fittings, sea cocks and their ease of operation (above floor plates)			
Electrical systems – alternators, motors etc.			
Electrical cables – condition, securely clipped, electrically safe			
Batteries, condition (Emergency and Radio)			
Emergency Escape routes, not obstructed, clearly marked			
Bulkheads, frames, condition			
Fire doors, flaps etc. condition			
Steering gear, condition, operational test			
Record of Planned Maintenance – see MT 4 questionnaire			
Fire risks and hazards			

OUT OF WATER SURVEY			
(INTERMEDIATE/RENEWAL)	Y	N	N/A
Condition of Hull			
Steel – Ultrasonic test and report			
Bilge Keels			
Sea Chests			
Sacrificial Anodes			
Wood – condition of planking, nails, caulking etc.			
Aluminium - condition			
GRP – condition, gel coat, damage, osmosis etc.			
Stern Gear condition			
Report			
Clearances			
Lubrication			
Propeller			
Kort Nozzle			
Steering Gear condition			
Rudder			
Rudder Stock			
Clearances			
Condition of sea inlets and discharge valves/cocks			
Draught Marks – Condition/accuracy			
Anchor and Chain cable condition			

COMPLETION OF SURVEY			
	Y	N	N/A
Should there be any doubt before completion of the survey/inspection contact the Principal Fishing Vessel Surveyor or local Marine Office for advice			
UKFVC issued or endorsed;			
Inspection report left with Owner/Skipper			
Record of Equipment (check list) left with Owner/Skipper			

	15 TO 24 METRE FISHING VESSELS SURVEY/INSPECTION AIDE-MEMOIR (Based on the 15 – 24 m Code of Safe Working Practice)		Doc No
			MSF 5550
	Name of Vessel		Revision
Date			2 16/09/09

CERTIFICATES AND RECORDS			
	Y	N	N/A
Validity of UK Fishing Vessel Certificate (Intermediate survey carried out?)			
Self Certification form			
Signed annually by the owner			
Radio Survey carried out at appropriate intervals			
Validity of Certificate of Registry			
Note; change of ownership and/or modifications to the vessel such as change of length, engine etc. will require that the Certificate of Registry be renewed/amended			
Validity of Crew Training Certificates			
Basic Safety Awareness			
Sea Survival			
Fire Fighting			
First Aid			
Validity of Servicing certificates for			
Fire Appliances			
Life Rafts			
etc			
Risk Assessments			
Copies on board/available in Risk Assessment folder			
Note; change of ownership or change of mode of fishing will require amended/new Risk Assessments			
Any new equipment fitted meets current rules/fit for purpose etc.			
Has any fire occurred on board necessitating the operation of the fixed fire-extinguishing systems or the portable fire extinguishers since the last survey;			
Safety Drills carried out and recorded			
Any requirements for Concentrated campaign or inspection have been confirmed – see any separate instructions			
Discuss use of lifelines/harnesses/belts			

SIAS record (*Chloe T*)

UKDT Inspections/Surveys

Ship ID	Group ID	Ship Name	Official Number	Inspection Date	Inspection Type	Watch List
30199	30088	ANGEL EMIEL	B10739	03/12/1997	In conjunction with a survey	View Inspection
30199	30088	ANGEL EMIEL	B10739	12/01/1998	In conjunction with a survey	View Inspection
30199	30088	ANGEL EMIEL	B10739	27/03/1998	In conjunction with a survey	View Inspection
41883	30088	CHLOE T	B10739	01/06/2000	Concentrated	View Inspection
41883	30088	CHLOE T	B10739	24/11/2001	Targeted	View Inspection
41883	30088	CHLOE T	B10739	19/03/2002	In conjunction with a survey	View Inspection
63534	30088	CHLOE T	B10739	25/11/2005	In conjunction with a survey	View Inspection
63534	30088	CHLOE T	B10739	08/11/2007	Targeted	View Inspection
63534	30088	CHLOE T	B10739	26/05/2008	Targeted	View Inspection
63534	30088	CHLOE T	B10739	19/01/2011	In conjunction with a survey	View Inspection
63534	30088	CHLOE T	B10739	02/02/2012	Targeted	View Inspection
63534	30088	CHLOE T	B10739	07/06/2012	Targeted	View Inspection



UK & DT Inspection/Survey Details

Ship Details

Ship ID 63534

Next ID

Group ID 30088

Ship Name CHLOE T

IMO Number 0000000

Official Number B10739

FV Number PZ1186

Call Sign MLVY3

Ship Type F1 - Fishing Vessel - Steel

Flag 670 - UNITED KINGDOM

Class. Society 0 - NONE

Owner

Year of Build 1968

UK Class Code X

Kw 455

Dead Weight

Length(m) 23.55

Gross Tonnage 000136

Inspection Details

Marine Office Plymouth

Inspection Date 07/06/2012

Input Date 11/06/2012

Detained? N

Release Date

Country UNITED KINGDOM

Place Newlyn

Inspection Type Targeted

Inspected at Sea? N

MACRIS Codes

Comments - PLYMOUTH MARINE OFFICE

Ship Actions

Inspection has no ship actions

Survey Details

Inspection has no surveys

ILO Survey Details

Inspection has no ILO Survey

Certificate Details

Certificate	Issued by	Date of Issue	Expiry Date	Last Surv Date	Last Survey Country	Last Survey Place	Last Survey Issue Authority
FVC	Maritime and Coastguard Agency	21/07/2011	24/02/2016		00	000	NONE

Deficiency Details

Code	Surveyor's Description	Regulation Ref	Relates to survey?	Actions
0	Class A AIS to be fitted within 2 weeks		1	16



UK & DT Inspection/Survey Details

Ship Details

Ship ID 63534

Next ID

Group ID 30088

Ship Name CHLOE T

IMO Number 0000000

Official Number B10739

FV Number PZ1186

Call Sign MLVY3

Ship Type F1 - Fishing Vessel - Steel

Flag 670 - UNITED KINGDOM

Class. Society 0 - NONE

Owner

Year of Build 1968

UK Class Code X

Kw 455

Dead Weight

Length(m) 23.55

Gross Tonnage 000136

Inspection Details

Marine Office Plymouth

Inspection Date 02/02/2012

Input Date 23/02/2012

Detained? N

Release Date

Country NETHERLANDS

Place DEN HELDER

Inspection Type Targeted

Inspected at Sea? N

MACRIS Codes

Comments FVSO Newlyn - 15-24m FV target

Ship Actions

Inspection has no ship actions

Survey Details

Inspection has no surveys

ILO Survey Details

Inspection has no ILO Survey

Certificate Details

Certificate	Issued by	Date of Issue	Expiry Date	Last Surv Date	Last Survey Country	Last Survey Place	Last Survey Issue Authority
FVC	UNITED KINGDOM	21/03/2011	24/02/2016		00	000	NONE

Deficiency Details

Code	Surveyor's Description	Regulation Ref	Relates to survey?	Actions
1330	OLD winch and casing to be cleared from vessel			10
988	Deck under winch to be verified as sound			99
1330	New winch and casing to be fitted			99
930	weights of new installation to be provided to verify any potential changes to vessels stability			99
1150	recommend derrick knuckles on gantry renewed			0



UK & DT Inspection/Survey Details

Ship Details

Ship ID 63534

Next ID

Group ID 30088

Ship Name CHLOE T

IMO Number 0000000

Official Number B10739

FV Number PZ1186

Call Sign MLVY3

Ship Type F1 - Fishing Vessel - Steel

Flag 670 - UNITED KINGDOM

Class. Society 0 - NONE

Owner

Year of Build 1968

UK Class Code X

Kw 455

Dead Weight

Length(m) 23.55

Gross Tonnage 000136

Inspection Details

Marine Office Plymouth

Inspection Date 19/01/2011

Input Date 23/02/2011

Detained? N

Release Date

Country UNITED KINGDOM

Place Newlyn

Inspection In conjunction with a

Inspected at

Type survey

Sea? N

MACRIS Codes

Comments Plymouth Marine Office

Ship Actions

Inspection has no ship actions

Survey Details

Survey Type

Survey Description

FVC(R)

United Kingdom Fishing Vessel Certificate(RENEWAL)

ILO Survey Details

Inspection has no ILO Survey

Certificate Details

Certificate	Issued by	Date of Issue	Expiry Date	Last Surv Date	Last Survey Country	Last Survey Place	Last Survey Issue Authority
FVC	UNITED KINGDOM	01/02/2007	24/02/2011		00	000	NONE

Deficiency Details

Code	Surveyor's Description	Regulation Ref	Relates to survey?	Actions
1288	Freeing Ports to overhaul/renew (4)		S	99
983	Repair bulwark as necessary		S	99
983	Repairs to top rail of bulkwark required		S	99
1240	Ensure all hatch dogs free		S	99
1270	Ensure all door dogs free		S	99
743	All fire flaps and vents to be in good working order		S	99
988	Renew wooden deck in net store		S	99
988	De- scale and coat tank in net store		S	99
741	Fuel shut offs to prove		S	99
950	Electrical condition report / megga test to provide		S	99
1060	Prove all machinery alarms		S	99
983	Vessel to be slipped within one month for hull survey and any remedial repairs		S	99
930	Light-ship check to carried out to verify vessel stability		S	99
1541	Compass to be swung and deviation card displayed		S	99
399	Crew to be exercised at emergency drill and anchoring - to be witnessed by MCA		S	99
252	Crew qualifications to be verified		S	99
699	Provide servicing dates and certificates for LSA		S	99
371	Provide copy of first aid kit certificate		S	99
199	Provide copy of certificate of registry		S	99
999	Risk assessments to be sighted		S	99
1270	Door and hatch seals to be renewed as required		S	99
1275	Roatary vent on funnel deck to renew		S	99
1240	Corroded escape hatch coaming to repair		S	99
945	Emergency light in escape trunking to repair		S	99
915	Mark escape hatch		S	99
915	No smoking sign requirednear batteries in		S	99

	funnel		
1560	New local chart required showing revised TSS	S	99
1570	2011 Almanac required	S	99
915	Winch stops to mark	S	99
660	Lifejacket locker to mark	S	99



UK & DT Inspection/Survey Details

Ship Details

Ship ID 63534

Next ID

Group ID 30088

Ship Name CHLOE T

IMO Number 0000000

FV Number PZ1186

Official Number B10739

Call Sign MLVY3

Ship Type F1 - Fishing Vessel - Steel

Flag 670 - UNITED KINGDOM

Class. Society 0 - NONE

Owner

Year of Build 1968

Kw 455

Length(m) 23.55

UK Class Code X

Dead Weight

Gross Tonnage 000136

Inspection Details

Marine Office Plymouth

Inspection Date 28/05/2008

Input Date 03/06/2008

Detained? N

Release Date

Country UNITED KINGDOM

Place Newlyn

Inspection Type Targeted

Inspected at Sea? N

MACRIS Codes

Comments - Plymouth MO

Ship Actions

Inspection has no ship actions

Survey Details

Inspection has no surveys

ILO Survey Details

Inspection has no ILO Survey

Certificate Details

Certificate	Issued by	Date of Issue	Expiry Date	Last Surv Date	Last Survey Country	Last Survey Place	Last Survey Issue Authority
FVC	UNITED KINGDOM	01/02/2007	24/02/2011		00	000	NONE

Deficiency Details

Code	Surveyor's Description	Regulation Ref	Relates to survey?	Actions
660	Constant wear lifejackets due for service		I	17
910	Emergency exit /escape from accommodation - renew hatch seal		I	16
910	Dogs - doors to shelter deck - free up		I	17



UK & DT Inspection/Survey Details

Ship Details

Ship ID 63534

Next ID

Group ID 30088

Ship Name CHLOE T

IMO Number 0000000

Official Number B10739

FV Number PZ1186

Call Sign MLVY3

Ship Type F1 - Fishing Vessel - Steel

Flag 670 - UNITED KINGDOM

Class. Society 0 - NONE

Owner

Year of Build 1968

UK Class Code X

Kw 455

Dead Weight

Length(m) 23.55

Gross Tonnage 000136

Inspection Details

Marine Office Plymouth

Inspection Date 08/11/2007

Input Date 04/12/2007

Detained? N

Release Date

Country UNITED KINGDOM

Place Newlyn

Inspection Type Targeted

Inspected at Sea? N

MACRIS Codes

Comments - FVSo Newlyn

Ship Actions

Inspection has no ship actions

Survey Details

Inspection has no surveys

ILO Survey Details

Inspection has no ILO Survey

Certificate Details

Certificate	Issued by	Date of Issue	Expiry Date	Last Surv Date	Last Survey Country	Last Survey Place	Last Survey Issue Authority
FVC	UNITED KINGDOM	01/02/2007	24/02/2011		00	000	NONE

Deficiency Details

Code	Surveyor's Description	Regulation Ref	Relates to survey?	Actions
1410	Renew o Ring stern seal		I	17
690	renew /replace line throwers		I	17
699	Renew man overboard markers		I	17
1671	Renew EPIRB HRU		I	17
983	Renew anodes as necessary		I	17



UK & DT Inspection/Survey Details

Ship Details

Ship ID 63534

Next ID

Group ID 30088

Ship Name CHLOE T

IMO Number 0000000

Official Number B10739

FV Number PZ1186

Call Sign MLVY3

Ship Type F1 - Fishing Vessel - Steel

Flag 670 - UNITED KINGDOM

Class. Society 0 - NONE

Owner

Year of Build 1968

UK Class Code X

Kw 455

Dead Weight

Length(m) 23.55

Gross Tonnage 000136

Inspection Details

Marine Office Plymouth

Inspection Date 25/11/2005

Input Date 30/11/2005

Detained? N

Release Date

Country UNITED KINGDOM

Place Newlyn

Inspection In conjunction with a
Type survey

Inspected at
Sea? N

MACRIS Codes

Comments

Ship Actions

Inspection has no ship actions

Survey Details

Survey Type

Survey Description

FVA(A)

Category A Survey - Fishing Vessel (ANNUAL)

ILO Survey Details

Inspection has no ILO Survey

Certificate Details

Certificate	Issued by	Date of Issue	Expiry Date	Last Surv Date	Last Survey Country	Last Survey Place	Last Survey Issue Authority
FVC	UNITED KINGDOM	08/11/2002	24/02/2006		00	000	NONE

Deficiency Details

Code	Surveyor's Description	Regulation Ref	Relates to survey?	Actions
1560	up to date charts to provide		S	99
1570	2006 nautical almanac required		S	99
660	Lifejacket lights to renew		S	17
2099	Solas 1 emergency signals chart to display		S	99
690	Line throwers 2 to re furbish		S	99
1671	EPIRB HRU to renew		S	17
715	Fire detection system to service and certify		S	99
1541	Compass to swing and deviation card to display		S	99
1620	Radio survey to conduct		S	99
371	Medical kit to service and certify		S	99
637	Provide man over board retrieval system		S	99
660	Mark lifejacket locker		S	99
999	Gear box cooling pipe renew as discussed		S	99
520	Various engine room lights to secure /shade		S	16
945	Test all emergency lighting		S	16
1099	Fit 2nd independent bilge alarm in engine room		S	99
1099	provide Engine room and fish room bilge alarms		S	17
741	Mark and Test all fuel shut offs		S	17
1260	toilet scuttle deadlight to free		S	99
1270	All door dogs to free up		S	17
1270	re rubber doors as necessary		S	99
999	Open up chain locker for inspection		S	99
986	Bulwark stanchions to fair as necessary		S	99
930	Conduct lightship check to verify vessel stability		S	99
983	Carry out hull survey and remedy faults		S	99

	as required		
1286	Mark location of sea cocks in engine room	S	99
1550	Prove navigation lights and horn	S	17
1551	Sight aldi lamp	S	99
936	Sight emergency steering	S	10
190	official logbook entries to be maintained	S	99
940	Fuel tank to be inspected internally when opened up	S	99



UK & DT Inspection/Survey Details

Ship Details

Ship ID 41883

Next ID 63534

Group ID 30088

Ship Name CHLOE T

IMO Number 0000000

Official Number B10739

FV Number PZ1186

Call Sign MLVY3

Ship Type F1 - Fishing Vessel - Steel

Flag 670 - UNITED KINGDOM

Class. Society 0 - NONE

Owner

Year of Build 1968

UK Class Code X

Kw 313

Dead Weight

Length(m) 23.55

Gross Tonnage 000136

Inspection Details

Marine Office Plymouth

Inspection Date 19/03/2002

Input Date 28/03/2002

Detained? N

Release Date

Country UNITED KINGDOM

Place Newlyn

Inspection In conjunction with a

Inspected at
Sea? N

Type survey

MACRIS Codes

Comments

Ship Actions

Inspection has no ship actions

Survey Details

Survey Type	Survey Description
EVA(P)	Category A Survey - Fishing Vessel (PART)

ILO Survey Details

Inspection has no ILO Survey

Certificate Details

Certificate	Issued by	Date of Issue	Expiry Date	Last Surv Date	Last Survey Country	Last Survey Place	Last Survey Issue Authority
FVC	UNITED KINGDOM	09/04/1998	24/02/2002		00	000	NONE
UKE	UNITED KINGDOM	01/06/2000	24/02/2002		00	000	NONE

Deficiency Details

Code	Surveyor's Description	Regulation Ref	Relates to survey?	Actions
299	Record of crew competancies to supply (form provided)		S	99
350	One cabin light to shade		S	99
371	First aid kit to re-certify		S	99
520	One light to repair in net store		S	99
599	Winchouse non-return valves to overhaul		S	99
650	Two lifebuoys to refurbish		S	99
660	Lifejacket light batteries to renew		S	99
699	Dispose of old linethrower rockets		S	99
699	Investigate stowage of lifejackets in more accessible space		S	99
745	All vents on funnel deck to overhaul		S	99
745	Test all fuel trips		S	99
799	Record of fire extinguisher servicing to provide		S	99
910	Dogs on doors from accomodation to shelter deck to free		S	99
910	E/Room door self closure to repair		S	99
915	Mark 'crew escape keep clear' on upper hatch		S	99
915	Mark valve chest in ER		S	99
930	Light ship check to conduct to verify vessels stability		S	99
936	Emergency steering to demonstrate		S	99
945	24v emergency lighting to test		S	99
945	Emergency light in cabin escape trunking to restore		S	99
950	Electrical condition report to provide		S	99
950	Cooker shut offs to mark		S	99
999	Hull survey to conduct in accordance with current practice & legislation		S	99
999	One bolt securing E/Room ladder missing - replace		S	99

999	Risk assessment to sight	S	99
999	Form SF44 - condition of stern gear to complete and return ASAP	S	99
1260	Dog deadlights to be freed as necessary	S	99
1499	Main engine maintenance report to provide	S	99
1541	Compass to be swung and deviation card displayed	S	99
1570	Nautical Almanac to sight	S	99
1699	Radio survey to conduct	S	99
1940	Sign re. oil pollution to be displayed in ER	S	99
2099	SOLAS I Notice to display	S	99

Record of Particulars of a Fishing Vessel (*Chloe T*)



RECORD OF PARTICULARS OF A FISHING VESSEL

PARTICULARS OF VESSEL

Name of Vessel	CHLOE T									
Official Number	B10739		Port of Registry	Penzance						
Fishing Number	PZ1186		Gross Tonnage	<table border="1"> <tr> <td>ITC</td> <td>136</td> <td>ORIGINAL</td> </tr> </table>	ITC	136	ORIGINAL			
ITC	136	ORIGINAL								
Registered Length	<table border="1"> <tr> <td>ITC</td> <td>23.55</td> <td>ORIGINAL</td> <td>23.47</td> </tr> </table>	ITC	23.55	ORIGINAL	23.47	Overall Length	<table border="1"> <tr> <td>ITC</td> <td>26.24</td> <td>ORIGINAL</td> </tr> </table>	ITC	26.24	ORIGINAL
ITC	23.55	ORIGINAL	23.47							
ITC	26.24	ORIGINAL								

Date of expiry of Fishing Vessel Certificate 24 February 2016

NAME AND ADDRESS OF OWNER / OPERATOR*

Name	[REDACTED]		
Company	[REDACTED]		
Address	[REDACTED]		
	[REDACTED]		
	[REDACTED]		
Postcode	[REDACTED]	Country	UK
Telephone	[REDACTED]	Fax	
Email			

Surveyor	[REDACTED]	Office	[REDACTED]
Date of Final Survey	18 July 2011	Vessel CM No.	50215

Surveyed under Torremolinos N/A 15-24 Code of Practice ✓

Surveyor's Comments

Keel laid 1968
Kw 455
C/S MLVY3

* Delete as appropriate

PHOTOGRAPH OF VESSEL (to be attached)

Sketch : General layout; plan and profile

DOORS FITTED IN OUTER WATERTIGHT STRUCTURE

(i.e. structures contributing to buoyancy or protecting openings leading to spaces below deck)

[illegible]

HATCHWAYS

Space served	Dimensions	Coamings Material Height above deck	Hatch Type	Material	Thickness	No. of Clips
Chain Locker	600 x 600	Steel 200	Hinged	Steel	6	2
Forward Store	800 x 800	400	Hinged	AL2	6	2
Fish Room	1000 x 1000	Steel 420	Hinged	AL2	6	4
Crew Accom Escape	485 x 410	Steel 550	Hinged	Steel	6	1

CLOSING ARRANGEMENTS FITTED TO OPENINGS IN MACHINERY CASING TOPS

--

FISH SCUTTLES

Number	Size	Material	Retaining Device

COMPANION WAYS

Position on vessel	
Sill Height	
Closing Arrangement	

VENTILATORS IN EXPOSED POSITIONS

[illegible]

[illegible]

[illegible]

VENTILATORS IN EXPOSED POSITIONS (Cont.d)

[illegible]

PORTHOLES AND WINDOWS

Position	Type	Size	Blank / Deadlight
Casing Port and Stbd	Fixed	600 x 600	Steel Frame Material
Casing Aft	Fixed	510 x 420	Steel Frame Material

SKYLIGHTS

Position	Type	Size	Blank / Deadlight Material
-	-	-	-
-	-	-	-

Guard Rails to Rule Height

Yes

Portable Wires / Rails

No

Safety Harnesses

3

Lifelines

Yes

WATER FREEING ARRANGEMENTS

Deck	Length of Bulwark	Height of Bulwark	Size of Freeing Ports	Number on each Side	Means of Closure
Main Deck	22.20M	0.965M	600 x 600	4	3 Hinged Shutters 1 Sliding

Actual area each side

1.04M2

Rule area each side

0.94M2

PUMP DRAINAGE SYSTEM

Space	Type	Capacity	Backup Arrangements
-	-	-	-

OFFAL CHUTES FROM PROCESS AREA OR FACTORY DECK

Location	Inboard	Outboard

STABILITY (Stability data on board)

Stability data on board.
Approved stability book dated 24 April 1996 on board.
Satisfactory lightship check conducted on 17/2/2011

RISK ASSESSMENT

Has a Risk Assessment been carried out

YES☒**NO**☐

Comments

SCUPPERS, INLETS AND DISCHARGES

[illegible]

[illegible]

POLLUTION PREVENTION ARRANGEMENTS

Drip trays under all Filters "Oil discharge prohibited to sea" - Sign in Engine Room.

ANCHORS

Number and Type of Anchors	Two Bower Type
Length & Diameter of Chain Cables and/or Wire Rope	Windlass or Method of Retrieval
25M X25M and trawl cable	Trawl Winch

STEERING GEAR

Description of the Main, Auxiliary and Emergency Steering Gear

Main	Hydraulic Tiller handle and jury rig
Auxiliary	
Emergency	

GENERATORS

Capacity	Voltage
Auxiliary 2 rating 85 KVA	220/240
Main Engine 90A	24

EMERGENCY ELECTRIC POWER

Source	Batteries in Galley top
Capacity	300AH

EMERGENCY LIGHTING

Position	Date Tested
Accommodation	March 2011
Engine Room	March 2011
Life Raft Area	March 2011

STRUCTURAL FIRE PROTECTION

Fire Doors			Ventilation Fire Valves		
No	Type	Position	No	Type	Position
-	-	-	-	-	-

A60 / A30 INSULATION

Location	Type (A60/A30)
-	-

MAIN AND AUXILIARY MACHINERY

Main Engines			Purpose
Number	Manufacturer's Name & Type	Max. cont. rating	
1	Stork 6 FHD 240 S/N 13080	456	
Auxiliary Engines			Purpose
2	Cummins 85KVA	85	Generation
Total Installed KW		547	

Air Receivers - Number	Capacity	Relief Valve Limiting Pressure	Date Tested
3		2 - 30 bar, and 1 - 7.5bar	

BILGE PUMPS

Description	Compartment in which pump is situated	Capacity M³/hr	Source of Power and its position in vessel
K & R (2)			Audible and visible in W'house from E.R.
Pumps Tested		March 2011	

BILGE SUCTIONS

Compartment	Number and size of suction to Compartment
Chain Locker	valve limber 50
Store	63
Fish Room	63 X 2
Engine Room	63 X 2

ACCESS TO ASHORE

Gangway provided	No	Accommodation Ladder provided	No
Other Means of Access	-		

MEDICAL CHEST

Scale	B	Date Serviced	January 2011
-------	---	---------------	--------------

EMERGENCY COMMUNICATIONS

	Type and serial number(s)	Battery expiry	HRU expiry
EPIRB	Kannad	January 2014	February 2012
PORTABLE VHF			
SARTS			

INFLATABLE BOATS

Maker's Name	-	Length (m)	-	Number of Persons	-
Weight with equipment and engine (Kg)	-	Stowage	-		
Type of Engine / Kw	-	Date of Inspection			

DAVITS AND WINCHES

Davits or Launch / Recovery Device	Description	-		SWL:
	Are they sufficient strength to lower fully-laden boats			-
Winches	Description	-		SWL:
	Date of Overhaul	January 2007		-

L.P.G. (Liquefied Petroleum Gas) - Installation

Detector Type	Position	Date Tested

BILGE DETECTION / ALARM SYSTEM

			Secondary or High Level fitted
Compartments Served	Engine Room	Audible and Visual	Secondary
	Fish Hold	Audible and Visual	
	Other		
Location of Alarm	Wheelhouse from Engine Room	Date Tested	March 2011

NAVIGATION COMPASSES

Magnetic Compass	Type	Date Adjusted
Observer	Marine Instruments (Karl Warner)	28 January 2011
	Deviation Card Exhibited	Yes

Gyro Compass	Type	Date Last Serviced
No		
	Gyro Compass Error Book Maintained	

SOUNDING EQUIPMENT**SIGNALLING LAMP**

Maker's Name and Type	Maker's Name and/or Type
KOden CVS - 822 Furuno CVS	Aldis and spare bulb

NAUTICAL PUBLICATIONS

Admiralty Chart Numbers	L(D1) 2656, L(D1) 2565 L(D1) 2454, L(D1) 442	Date of last correction
		October 2010
Other Publications	(b) (d) (e) (f) 2011 Almanac	

PILOT LADDERS

Pilot Ladder provided	Yes	Bulwark Ladder provided	No	Ships Side Built-in Ladder provided	No
-----------------------	-----	-------------------------	----	-------------------------------------	----

ROCKET AND SIGNALS

Line Throwing Appliance	Manufacturer's Name & Description	No of Units	Date of Expiry
	Comet (2)	2	July 2013
Ship's Distress Signals	Pains Wessex 6 + 4 + 2 C&P 9/2008	12	October 2013
Means provided for Emergency Signals			
Is a table of life-saving signals available on the ship's bridge		Yes	

FIRE APPLIANCES

		No.	Description
Portable Extinguishers	Machinery Spaces	3	Engine Room - 9 Litre Foam
		1	Engine Room - Co2
	Crew Spaces	1	Galley - Dry Powder
		2	Crew Accom - 9 Litre Water
	Other Spaces		
Date Serviced	November 2010	Spares carried	Yes

Fire Fighting Equipment	Hoses	Machinery Spaces	1	ER - 9m x 44
		Other Spaces	1	Deck - 18m x 50
	Spray Nozzles	Machinery Spaces	1	ER- S/J Bronze
		Other Spaces		
	Plain Nozzles	Machinery Spaces		
		Other Spaces	1	Deck - 12mm Bronze
	Trolley Type Extinguishers			None
	Date Serviced	November 2010		
	Fixed Systems			None
	Date Serviced			

LIFERAFTS

Manufacturer & Type	Hired or Serial No.	No. of Persons	Date of Inspection	Stowage
RFD 6mm MK7A	400054	6	July 2011	STB Galley Top
HRU Expiry Date	December 2011			
RFD Surviva 6	19735	6	July 2011	Port Galley Top
HRU Expiry Date	December 2011			
HRU Expiry Date				
HRU Expiry Date				
HRU Expiry Date				
HRU Expiry Date				
HRU Expiry Date				

LIFEJACKETS / IMMERSION SUITS

Manufacturer and/or Type		Number	Stowage		
Duncan		6	Locker in AFT Shelter		
Duncan		2	Wheelhouse		
Lights Expiry Date	July 2015		Number of Donning Instructions		2
Immersion Suits carried		No	Number	-	
Constant Wear Lifejackets carried		Yes	Number	4	
Muster Lists Exhibited		No			

LIFEBUOYS

Manufacturer and/or Type		No. on Board	Stowage
Perrybuoy (4)	With buoyant line	2	
	With self-igniting light		
	With smoke marker & light	2	P&S Casing Top
Expiry Date of Smoke Marker	October 2013		

MAN OVERBOARD RETRIEVAL SYSTEM

Type	Net	Location	AFT Shelter
Date Inspected	March 2011		

FIRE DETECTION SYSTEM

Fire alarm system installed

Date Serviced

March 2011

NAVIGATION LIGHTS

Position of Sidelights

wheelhouse top

Spare Electric Lamps

Adequate

Breadth of Chocks

Primary

Port

110

Starboard

110

Secondary

Port

Starboard

Location	Primary Type	Secondary Type
Lantern	Manufacturer's Name	Type
Mast Fore		
Mast Main	Den Haan	70R
Port	Den Haan	70R
Starboard	70R	
Stern	Den Haan	70R
Anchor Forward		
Anchor Aft		
Fishing Green	Den Han	70R
Fishing / NUC Red		
Fishing White	Dan Han	70R
Not Under Command		

Is Screening sufficient to ensure working lights cannot be mistaken for navigation

Yes

SOUND SIGNALS AND SHAPES

Diameter and Position of Bell	300m Wheelhouse Locker	No of NUC Shapes	3
Maker's Name and Type of Whistle	Ibaki	Day Signal	1
NUC	Alleman and Schlatter 55		

FIRE APPLIANCES (Cont)

Item	No.	Description	Date Tested
Fire Pumps	1	Main deckwash pump in Eng Room	March 2011
Emergency Fire Pump	1	Winch casing - Manual + hose + nozzle	March 2011
Portable Pumps			March 2011
International Shore Connections	No	Fire Control / Safety Plan exhibited	No

FIREMEN'S OUTFITS

Item	No.	Description
Breathing Apparatus		
Safety Lamps		
Axes	1	Fireman's axe in wheelhouse
Fire Suits		
Spare Cylinders		
Date Serviced		

LOCATIONS OF EMERGENCY CONTROLS

		Date Tested
Means of Closing Ventilator Openings	Vent flaps, engineer S/C door	March 2011
Remote Controls for Fuel Oil, Hydraulic & Lube Oil Tanks		
Remote Stops for Accommodation Fans, Engine Room Fans, Electric Cooker, Galley	Engine Room Fans (3) Fuel and Oil Transfer pump	March 2011
Remote Stops for F.O. Transfer Pumps, L.O. Pumps, Purifier Pumps		
Ship/Shore Oil Sludge Pump		
Controls for Sea Inlet, Discharge & Bilge Injection Valves	Daily service tank valves (3) Transverse tank valves	March 2011

Equation for calculating rate of flooding

Flooding rate calculations

$$\text{Area of hole (m}^2\text{)} = \frac{\text{Flooding rate (Kg/s)}}{C_d \times \rho \times \sqrt{\frac{2P}{\rho}}}$$

Where: C_d = Coefficient of drag (taken as 0.62 for a hole in a flat plate)

ρ = density, 1025 kg/m³ for seawater

P = pressure at given depth

$= \rho gh$

where

- ρ = density
- g = gravity (9.81 m/s²)
- h = depth below the waterline (m)

② Flooding rate (Kg/s) = $\frac{\text{Flooding rate (m}^3\text{/hr)} \times \rho}{3600}$

③ Diameter of hole (mm) = $\left(2 \sqrt{\frac{\text{Area (m}^2\text{)}}{\pi}} \right) \times 1000$