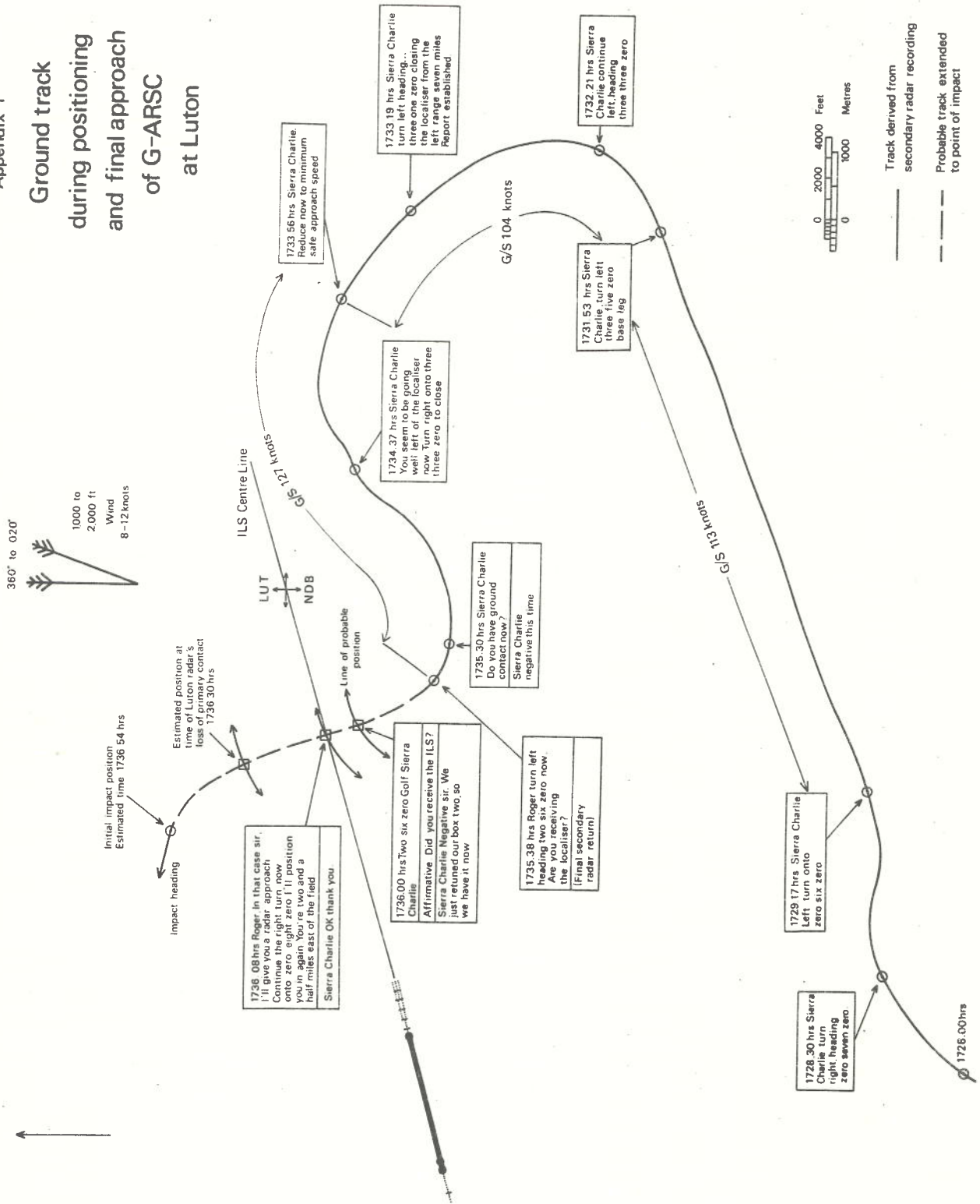


True North

Appendix 1

Ground track during positioning and final approach of G-ARSC at Luton



RELEVANT EXTRACTS OF RTF COMMUNICATIONS BETWEEN
LUTON DIRECTOR AND G-ARSC

TO	FROM	MESSAGE	TIME
		(THE TIME IS ONE SEVEN TWO ZERO)	1720
		(. .)	1720½
LUTON	G-ARSC	LUTON GOOD EVENING GOLF ALFA ROMEO SIERRA CHARLIE	
G-ARSC	LUTON	SIERRA CHARLIE IS IDENTIFIED ON HAND OVER LUTON WEATHER AT TIME FIVE ZERO SURFACE WIND THREE FOUR ZERO DEGREES EIGHT KNOTS FOUR THOUSAND METRES IN MIST SEVEN OKTAS SEVEN (THE TIME IS ONE SEVEN TWO ONE) ZERO ZERO FEET Q N H NINE EIGHT SEVEN Q F E NINE SIX EIGHT	1721
LUTON	G-ARSC	ER SIERRA CHARLIE THANK YOU SIR COPIED THE LUTON ER FIVE ZERO WEATHER SIR COULD YOU SAY AGAIN THE Q N H AND Q F E	
G-ARSC	LUTON	THE Q N H NINER EIGHT SEVEN Q F E NINER SIX EIGHT FOR RUNWAY TWO SIX	
LUTON	G-ARSC	NINE EIGHT SEVEN AND NINE EIGHT EIGHT LANDING RUNWAY TWO SIX GOLF SIERRA CHARLIE	
G-ARSC	LUTON	ER NEGATIVE (. .) THE Q N H NINER EIGHT SEVEN Q F E NINER SIX EIGHT	1721½
G-ARSC	LUTON	SIERRA CHARLIE DID YOU COPY THE PRESSURES	
LUTON	G-ARSC	(THE TIME IS ONE SEVEN TWO TWO) ER SIERRA CHARLIE AFFIRMATIVE SIR NINE EIGHT ER SEVEN AND NINE SEVEN EIGHT	1722
G-ARSC	LUTON	NEGATIVE THE Q F E NINER SIX EIGHT	
G-ARSC	LUTON	SIERRA CHARLIE CONFIRM THE Q F E SHOULD BE NINER SIX EIGHT	
LUTON	G-ARSC	SIERRA CHARLIE'S COPIED THE Q F E BEING NINE SIX EIGHT	
G-ARSC	LUTON	SIERRA CHARLIE CORRECT ARE YOU V M C BELOW AT THE MOMENT	
LUTON	G-ARSC	SIERRA CHARLIE AFFIRMATIVE SIR AND WE HAVE FOUR MILES TO RUN TO BOVINGDON VICTOR MIKE BELOW	

TO	FROM	MESSAGE	TIME
G-ARSC	LUTON	ROGER WOULD YOU LIKE TO CONTINUE INBOUND TO THE FIELD VICTOR MIKE OR WOULD YOU LIKE TO CLIMB AND HAVE RADAR VECTURING TO THE I L S	
LUTON	G-ARSC	ER SIERRA CHARLIE WE CAN ER POSITION ME LEFT BASE TO ER THE I L S WILL DO FINE	
G-ARSC	LUTON	ROGER SIERRA CHARLIE CLIMB TO TWO THOUSAND FEET THEN Q N H NINE EIGHT SEVEN FOR RADAR VECTURING TO THE I L S	
LUTON	G-ARSC	SIERRA CHARLIE ROGER SIR RECLEARED FIFTEEN HUNDRED FEET TO TWO THOUSAND FEET NINE EIGHT SEVEN FOR RADAR (THE TIME IS ONE SEVEN TWO THREE . . .) VECTURING RUNWAY TWO SIX	1723
G-ARSC	LUTON	SIERRA CHARLIE THE WEATHER NOW AT TIME TWO ZERO VISIBILITY FOUR THOUSAND METRES IN MIST THE CLOUD TWO OKTA EIGHT ZERO ZERO FEET SIX OKTA ONE TWO ZERO ZERO FEET	
LUTON	G-ARSC	SIERRA CHARLIE'S COPIED THAT THANK YOU	
G-ARSC	LUTON	SIERRA CHARLIE SQUAWK SEVEN ZERO SIX THREE	
LUTON	G-ARSC	SEVEN ZERO FOUR TWO SIERRA CHARLIE (.)	1723½
G-ARSC	LUTON	ER SEVEN ZERO SIX THREE	
LUTON	G-ARSC	SEVEN ZERO SIX THREE IS ON THANK YOU (THE TIME IS ONE SEVEN TWO FOUR . . .)	1724
G-ARSC	LUTON	SIERRA CHARLIE TURN RIGHT HEADING ZERO SIX ZERO FOR POSITIONING DOWNWIND LEFT HAND	
LUTON	G-ARSC	RIGHT ON TO ZERO SIX ZERO GOLF SIERRA CHARLIE (.) (THE TIME IS ONE SEVEN TWO FIVE . . .)	1724½ 1725
G-ARSC	LUTON	SIERRA CHARLIE LEFT ON TO ZERO FOUR ZERO TRACK ADJUSTMENT	
LUTON	G-ARSC	LEFT ON TO ZERO FOUR ZERO TURNING (.) (THE TIME IS ONE SEVEN TWO EIGHT . . .)	1725½ 1728
G-ARSC	LUTON	SIERRA CHARLIE TURN RIGHT HEADING ZERO SEVEN ZERO DOWNWIND LEG YOU'VE BECOME NUMBER TWO NOW TO A (.) LEARJET POSITIONING FROM THE SOUTH EAST	1728½

TO	FROM	MESSAGE	TIME
LUTON	G-ARSC	ER RIGHT ON TO ZERO SEVEN ZERO GOLF SIERRA CHARLIE (THE TIME IS ONE SEVEN TWO NINE . . .)	1729
G-ARSC	LUTON	SIERRA CHARLIE LEFT TURN ON TO ZERO SIX ZERO	
LUTON	G-ARSC	LEFT ON TO ZERO SIX ZERO GOLF SIERRA CHARLIE (. . .) (. . .)	1729½ 1731½
G-ARSC	LUTON	GOLF ALFA ROMEO SIERRA CHARLIE TURN LEFT HEADING THREE FIVE ZERO BASE LEG	
LUTON	G-ARSC	LEFT ON TO THREE FIVE ZERO GOLF SIERRA CHARLIE (THE TIME IS ONE SEVEN THREE TWO . . .)	1732
G-ARSC	LUTON	ROMEO SIERRA CHARLIE CONTINUE LEFT HEADING THREE THREE ZERO	
LUTON	G-ARSC	SIERRA CHARLIE CONTINUE LEFT ON TO THREE THREE ZERO (THE TIME IS ONE SEVEN THREE THREE . . .)	1733
G-ARSC	LUTON	ROMEO SIERRA CHARLIE TURN LEFT HEADING THREE ZERO ZERO CORRECTION THREE ONE ZERO CLOSING THE LOCALISER FROM THE LEFT RANGE SEVEN MILES REPORT ESTABLISHED	
LUTON	G-ARSC	GOLF SIERRA CHARLIE LEFT ON TO THREE ZERO ZERO CALL YOU ESTABLISHED (. . .)	1733½
G-ARSC	LUTON	ROMEO SIERRA CHARLIE REDUCE NOW TO MINIMUM SAFE APPROACH SPEED THERE WILL BE A JET TO BACKTRACK FOR DEPARTURE BEFORE YOU LAND	
LUTON	G-ARSC	(THE TIME IS ONE SEVEN THREE FOUR . . .) SIERRA CHARLIE COPIED THANK YOU	1734
G-ARSC	LUTON	(. . .) ROMEO SIERRA CHARLIE YOU SEEM TO BE ER GOING WELL LEFT OF THE LOCALISER NOW TURN RIGHT ON TO THREE THREE ZERO TO CLOSE	1734½
LUTON	G-ARSC	ER SIERRA CHARLIE RIGHT ON TO THREE THREE ZERO	
G-ARSC	LUTON	CORRECT REPORT IF YOU GET THE RUNWAY IN SIGHT	
LUTON	G-ARSC	SIERRA CHARLIE WILCO (THE TIME IS ONE SEVEN THREE FIVE . . .)	1735

TO	FROM	MESSAGE	TIME
G-ARSC	LUTON	SIERRA CHARLIE DO YOU HAVE GROUND CONTACT NOW (...)	1735½
LUTON	G-ARSC	ER SIERRA CHARLIE NEGATIVE THIS TIME	
G-ARSC	LUTON	ROGER TURN LEFT HEADING TWO SIX ZERO NOW ARE YOU RECEIVING THE LOCALISER	
LUTON	G-ARSC	LEFT ON TO ZERO SIX ZERO GOLF SIERRA CHARLIE	
G-ARSC	LUTON	NEGATIVE TWO SIX ZERO	
LUTON	G-ARSC	TWO SIX ZERO GOLF SIERRA CHARLIE	
G-ARSC	LUTON	AFFIRMATIVE DID YOU RECEIVE THE I L S	
LUTON	G-ARSC	ER SIERRA CHARLIE NEGATIVE SIR WE JUST RETURNED OUR BOX TWO (THE TIME IS ONE SEVEN THREE SIX . . .) SO WE HAVE IT NOW	1736
G-ARSC	LUTON	ROGER IN THAT CASE SIR I'LL GIVE YOU A RADAR APPROACH CONTINUE THE RIGHT TURN NOW ON TO ZERO EIGHT ZERO I'LL POSITION YOU IN AGAIN YOU'RE TWO AND A HALF MILES EAST OF THE FIELD	
LUTON	G-ARSC	SIERRA CHARLIE OKAY THANK YOU (...)	1736½
G-ARSC	LUTON	SIERRA CHARLIE CONFIRM YOU'RE TURNING NOW TO ZERO EIGHT ZERO	
G-ARSC	LUTON	GOLF ALFA ROMEO SIERRA CHARLIE DO YOU READ (THE TIME IS ONE SEVEN THREE SEVEN . . .)	1737
G-ARSC	LUTON	GOLF ALFA ROMEO SIERRA CHARLIE LUTON	
G-ARSC	LUTON	GOLF ALFA ROMEO SIERRA CHARLIE LUTON (...)	1737½
G-ARSC	LUTON	GOLF ALFA ROMEO SIERRA CHARLIE LUTON	

51°52'N 00°22'W

Luton CATEGORY I ILS R/W26

Luton CATEGORY I ILS R/W26

ELEV. 525 FT.
CONTOURS COMMENCE
300 FEET ABOVE AERODROME

BEARINGS ARE MAGNETIC
ELEVATIONS IN FEET A.M.S.L. 647
HEIGHTS IN FEET ABOVE DATUM (322)

INSTRUMENT APPROACH AND LANDING CHART I.C.A.O.

AERODROME OPERATING MINIMA	TAKE OFF DAY		NIGHT	
	MINIMA	DAY	MINIMA	NIGHT
DISTANCE BETWEEN MARKERS	90	120	140	180
O.M. to M.M.	3-22 n.m.	1-37	1-23	1-04
M.M. to R/W26 threshold	0.72 n.m.	29 sec.	18	14
				13

RADIO
Frequency
129.55, 128.75, 127.3
129.55, 128.75, 127.3, 120.2
120.2
121.75
127.3
128.75

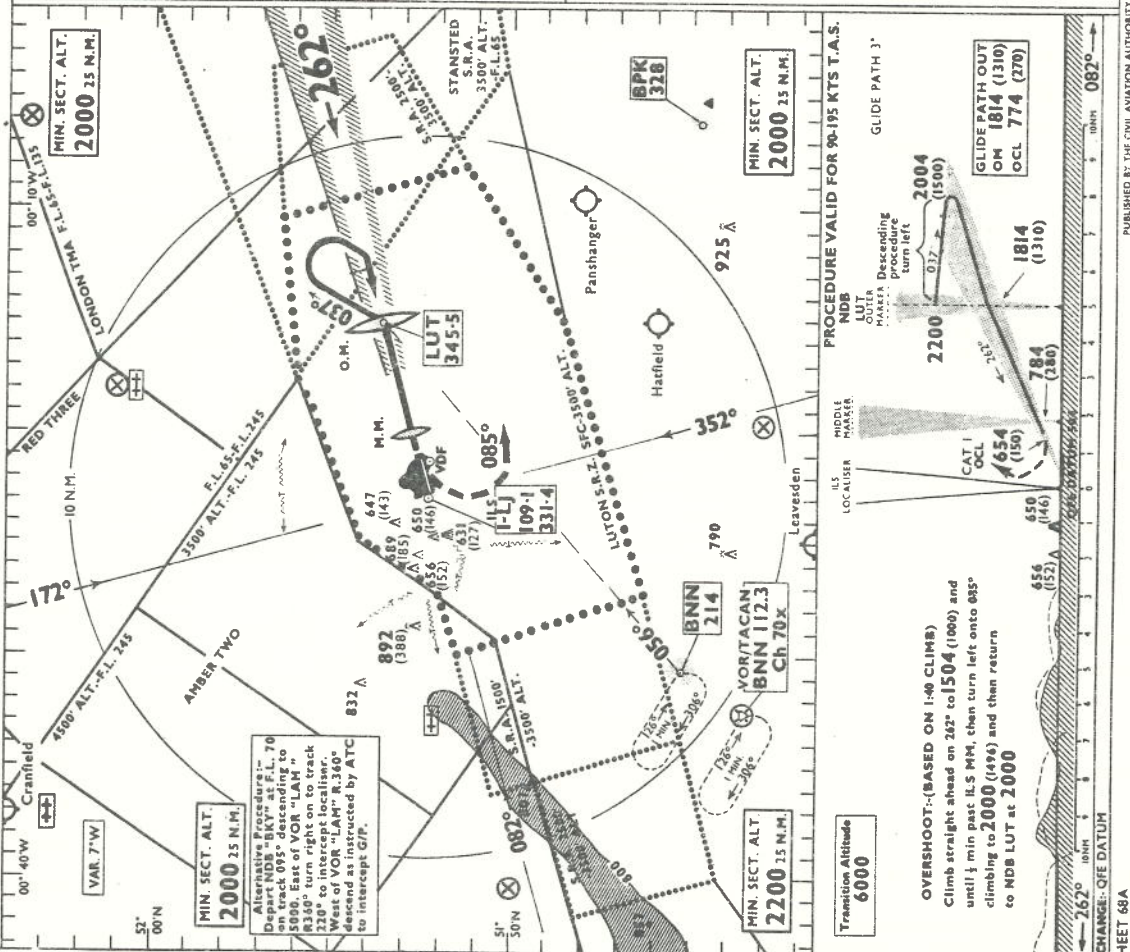
Call-sign
LUTON APPROACH
LUTON HOMER
LUTON TOWER
LUTON GROUND
LUTON RADAR
LUTON DIRECTOR

LIGHTING

APP. LTG
08 427M H.I. and L.I. red C/L. 1 bar. V.A.S.I.s.
26 {844M H.I. coded C/L 5 bars.
361M H.I. L.I. Red C/L. 1 bar. V.A.S.I.s.

RNWX LTG
08 H.I. Bi-d with Omni-d. component. Thr. H.I. green W. bars.
26 H.I. Bi-d with Omni-d. component. Thr. Flush Uni-d greens with elev. green W. bars

OTHER LTG
Taxiway. Green C/L Blue edge on 08/26 turning circles and holding bay western taxiway.
Obstruction lights.



AERO. INF. DATE 8-12-77

© COPYRIGHT - CIVIL AVIATION AUTHORITY 1977
WHOSE PERMISSION MUST BE OBTAINED BEFORE
THIS CHART IS REPRODUCED.

PUBLISHED BY THE CIVIL AVIATION AUTHORITY
DRAWN AND REPRODUCED BY TAPPING AND CHARTING ESTABLISHMENT RE