

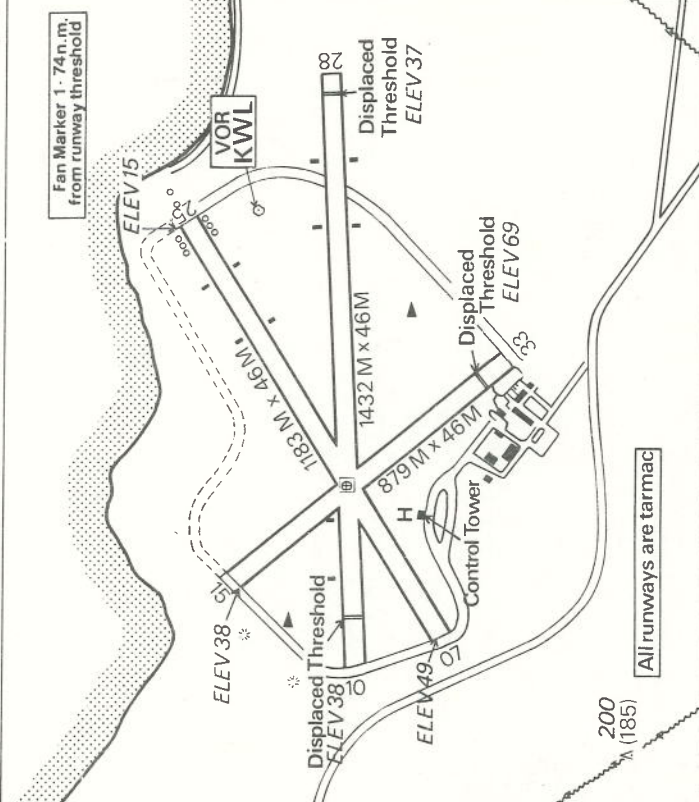
Kirkwall VOR R/W 25

ELEV. 69 FT.
Contours commence
300 feet above aerodrome

Marker to Threshold P/W 25	90 KTS	120 KTS	140 KTS	160 KTS	180 KTS	195 KTS
1.74 n.m.	1m10s	52s	45s	39s	35s	33s

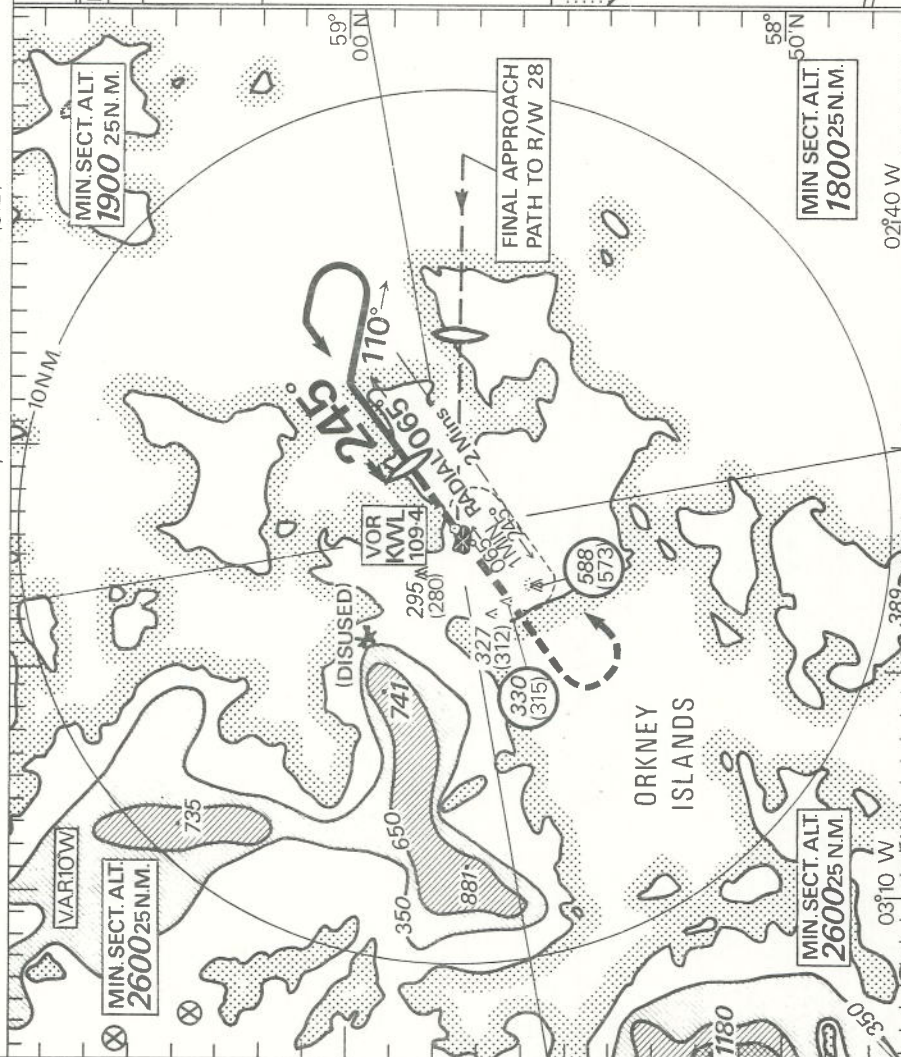
RADIO
APP } 118.3
TWR } KIRKWALL TOWER

LIGHTING
APP LTG } 25 2 sodiums. Sodium circling lights VASI's.
10/28 VASI's.
RWNY LTG } 10/28 L.I. Omni-d (Portable)
OTHER LTG } Taxiway. Obstruction.



INSTRUMENT APPROACH AND LANDING CHART ICAO

Bearings are magnetic
Elevations in feet AM S.L. 327
Heights in feet above threshold elevation
of runway 25 (312)



PROCEDURE VALID FOR 90-195 KTS TAS

NOTE
OCL 445(430)
when Marker
Beacon not used

Procedure turn right
110° →

Procedure turn left
110° →

Transition Altitude 3000
LOWEST HOLDING ALTITUDE 2600
OVERSHOOT (BASED ON 1:40 CLIMB)
Climb straight ahead on 245° to 1500 (1485)
then climbing turn left to VOR at 2600

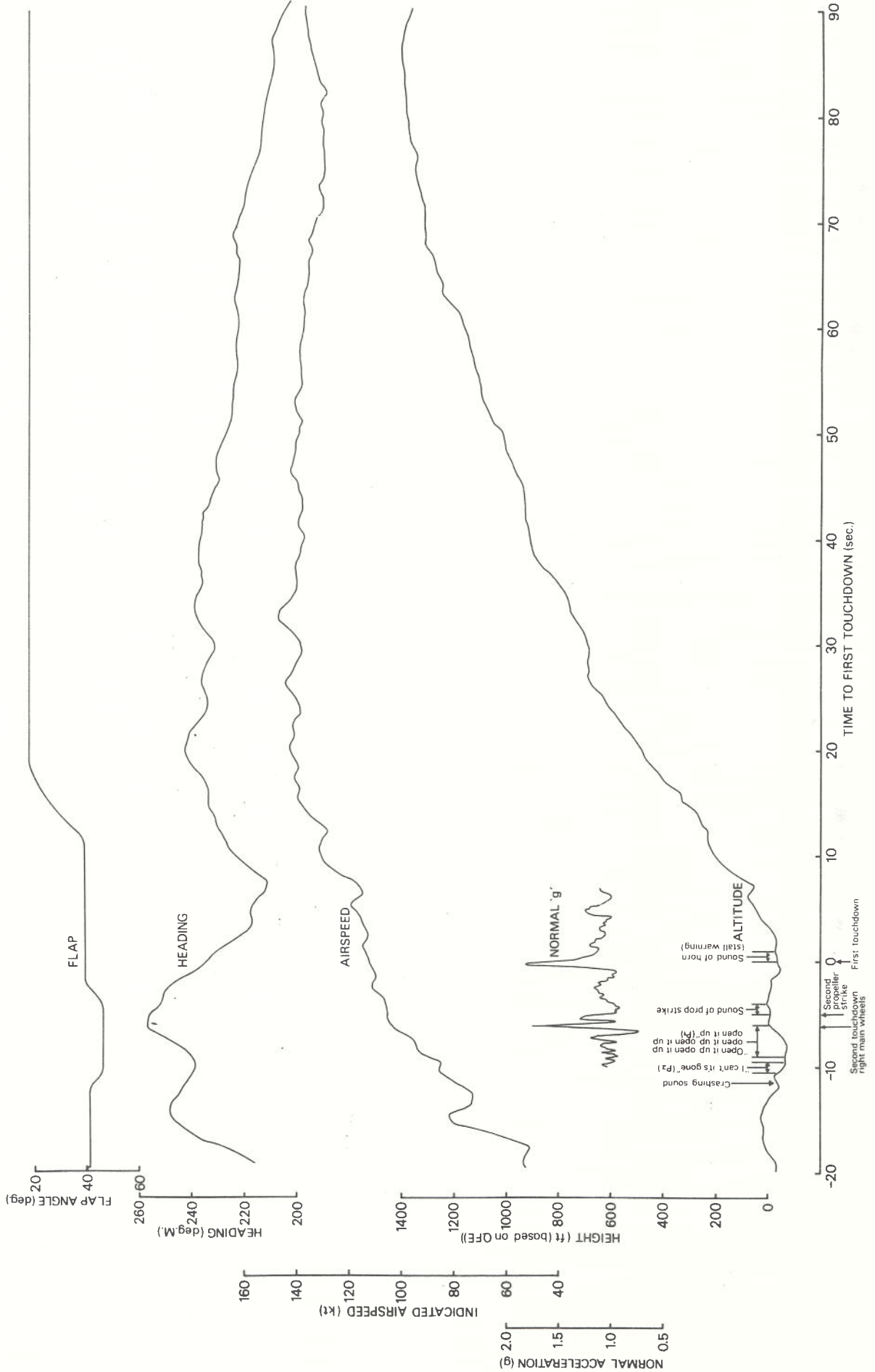
Transition Altitude 3000
LOWEST HOLDING ALTITUDE 2600
OVERSHOOT (BASED ON 1:40 CLIMB)
Climb straight ahead on 245° to 1500 (1485)
then climbing turn left to VOR at 2600

Transition Altitude 3000
LOWEST HOLDING ALTITUDE 2600
OVERSHOOT (BASED ON 1:40 CLIMB)
Climb straight ahead on 245° to 1500 (1485)
then climbing turn left to VOR at 2600

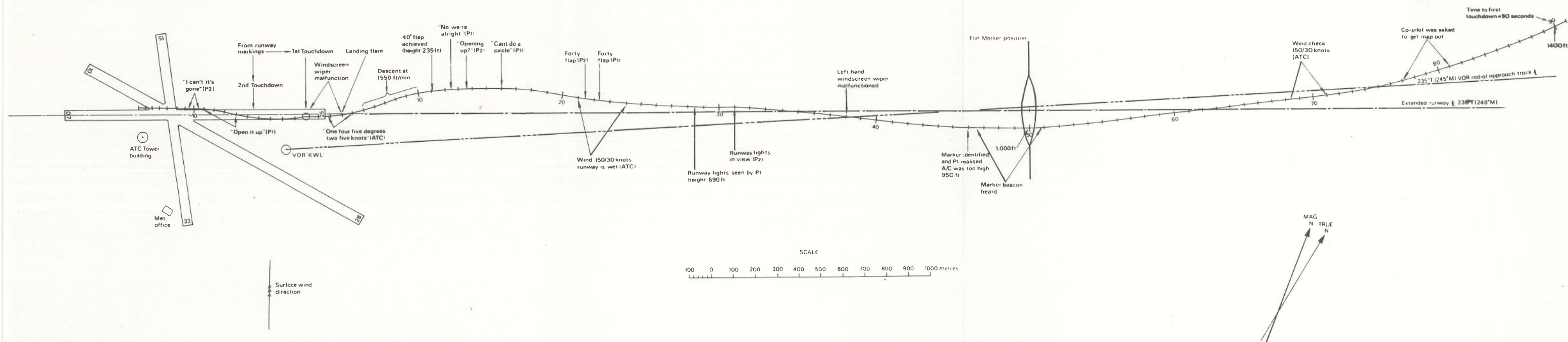
ALIDAIR VISCOUNT, G-BFYZ, ACCIDENT AT KIRKWALL ON 25th OCTOBER 1979

F.D.R. FOR FINAL APPROACH

F.D.R. + C.V.R. FOR GROUND CONTACT



ALDAIR VISCOUNT, G-BFYZ, ACCIDENT AT KIRKWALL ON 25th OCTOBER 1979
 FINAL PHASE TRACK PLOT INCLUDING CORRELATION WITH CVR DATA



APPENDIX 5

Some accidents/incidents with an operating crew of two or more 'Captains'

6 February	1958	Elizabethan	G-ALZU	Munich
17 February	1959	Vicount	TC-SEV	Gatwick
25 January	1961	Comet	G-APDM	Nr Fiumicino, Rome
4 March	1962	DC 7C	G-ARUD	Douala, Cameroon Republic
29 February	1964	Britannia	G-AOVO	Innsbruck
11 November	1969	Boeing 707	AX-ARB	Air miss near Epsom
		VC 10	G-ASGD	
3 June	1971	DC3	PH-MOA	Southend
19 July	1972	BAC One Eleven	G-AWYA	Corfu
10 April	1973	Vanguard	G-AXOP	Hochwald
15 October	1979	Viscount	G-BFYZ	Kirkwall

Some accidents with a Supervisory Captain on Board

23 March	1963	Comet	S-AR7	Alpes Maritime Near Nice
8 April	1968	Boeing 707	G-ARWE	Heathrow
14 January	1969	BAC One Eleven	G-ASJJ	Milan
27 October	1972	Viscount	F-BMCH	Clermont Ferrand
30 September	1975	TU154	HA-LCI	In sea near Beirut
16 July	1975	DC4	HK-645	Aranca South America
16 March	1978	TU134	LZ-TUB	Ilatschane Bulgaria

NB Training accidents not included.