

59° 53' N 01° 18' W

# Sumburgh VOR R/W 27

## Sumburgh VOR R/W 27

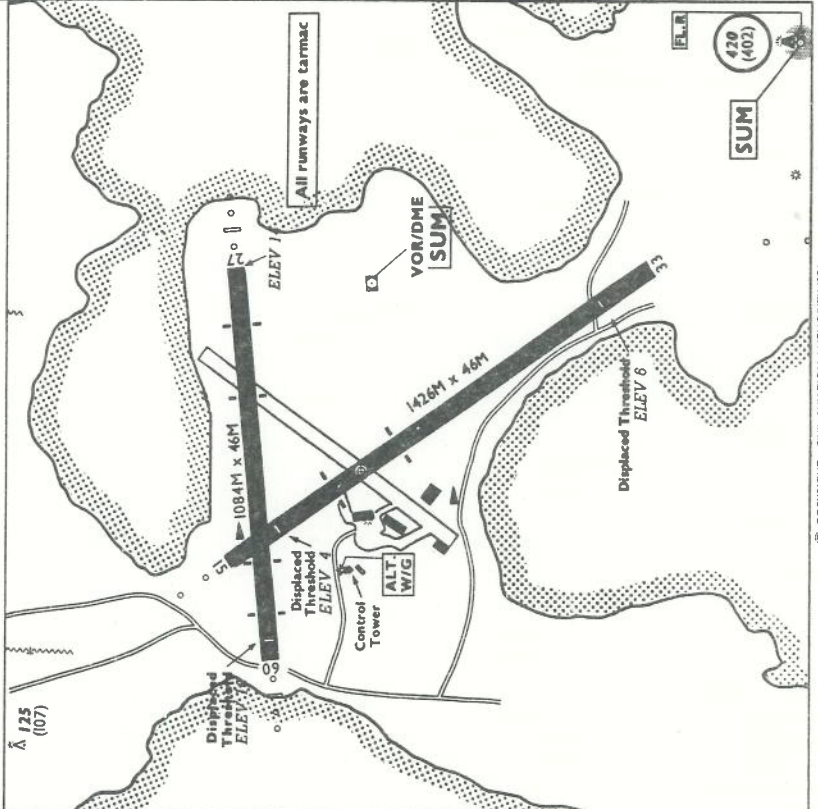
**ELEV. 18 FT.**  
 CONTOURS COMMENCE  
 300 FEET ABOVE AERODROME

AERODROME OPERATING MINIMA	TAKE OFF DAY	NIGHT
LANDING DAY		

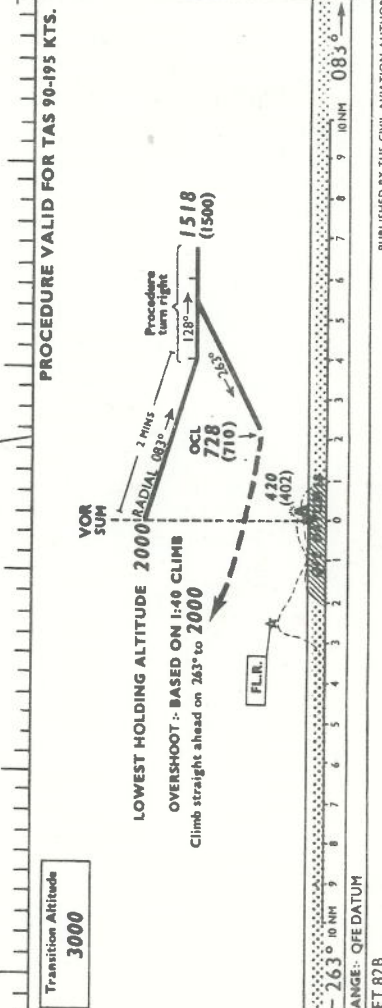
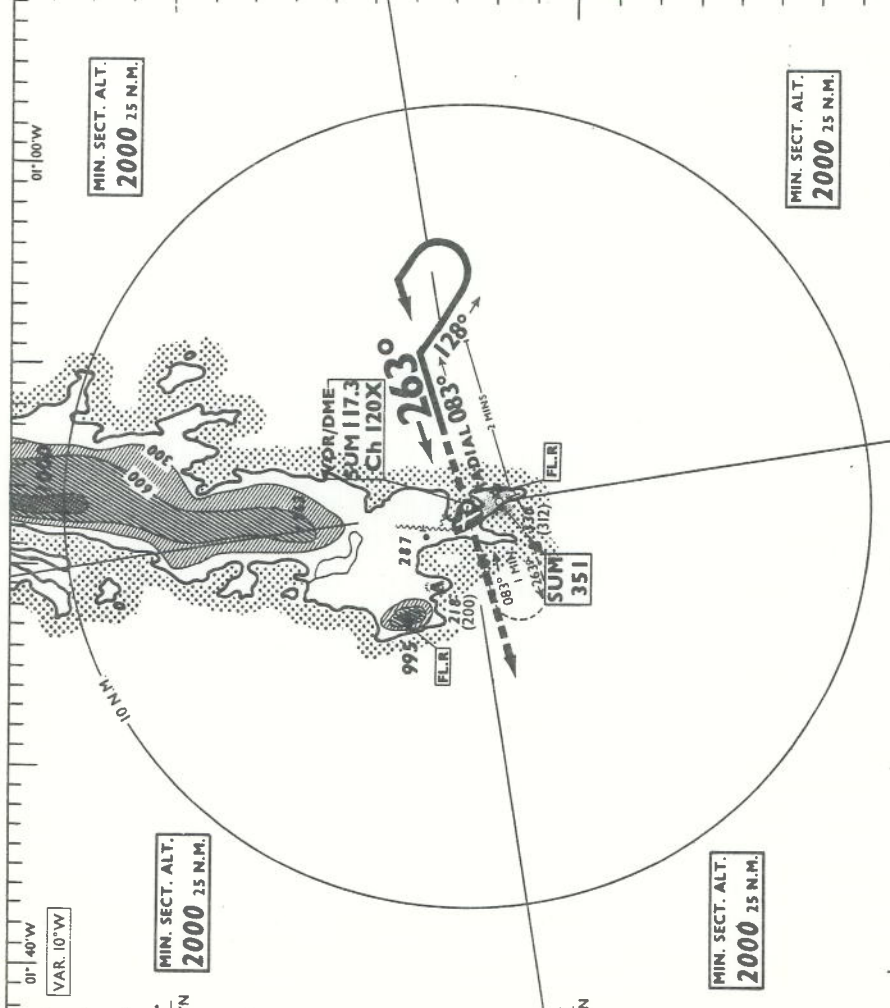
<b>RADIO</b>	
TWR	120.9 SUMBURGH TOWER
APP	123.15 SUMBURGH APPROACH
RADAR	130.05 SUMBURGH RADAR

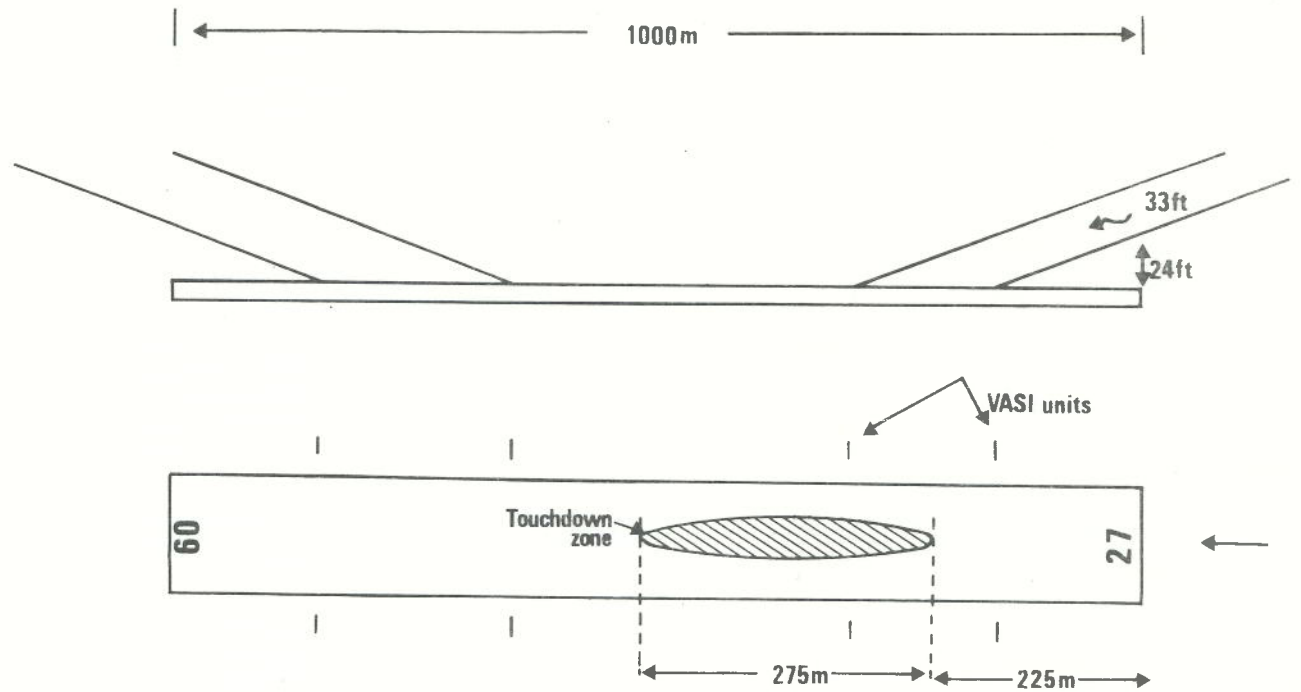
**LIGHTING**

Beacon: Alternate White/Green  
 APP LTG 09/27 152M H.I. C/L 1 bar VASI's.  
 15 AVASI's.  
 RWY LTG 09/27 H.I. edge with Thresholds.  
 15/33 Battery Lights.  
 OTHER LTG Obstruction. Taxiway.

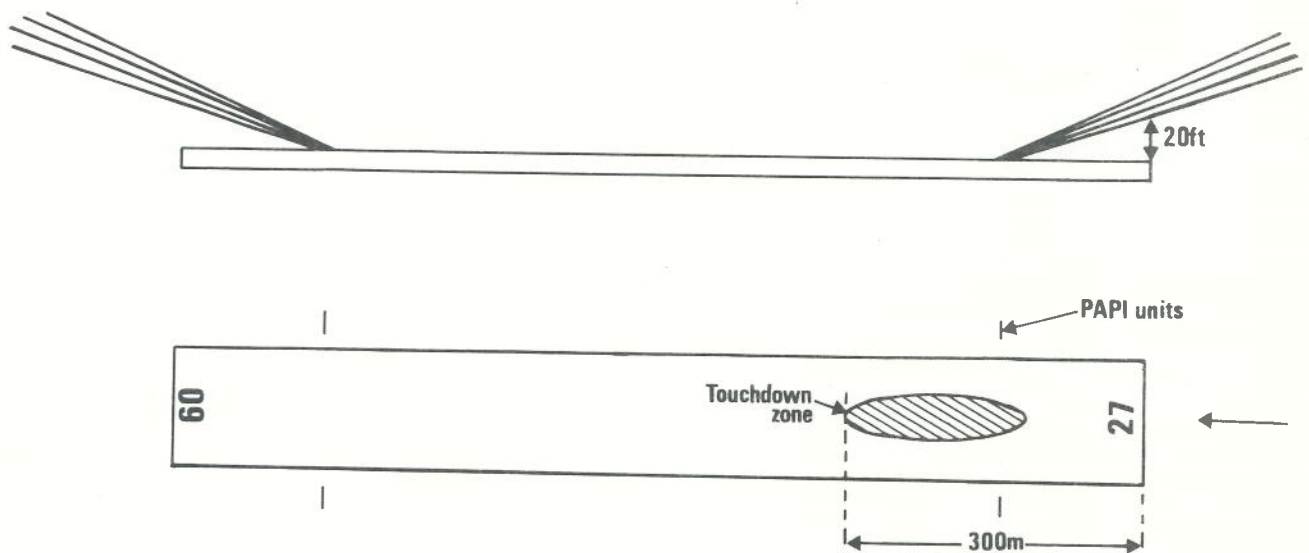


## INSTRUMENT APPROACH AND LANDING CHART ICAO





(a) Visual Approach Slope Indicator System (VASIS)



(b) Precision Approach Path Indicator (PAPI)

Fig.1 Sumburgh Airport – Estimated Touchdown Zones for VASIS and PAPI Installations