



Public Health
England

Protecting and improving the nation's health

COVID-19 vaccine surveillance report

Week 24

Contents

Summary.....	3
Vaccine effectiveness	4
Population impact	8
References.....	20

Summary

Three coronavirus (COVID-19) vaccines have now been approved for use in the UK. Rigorous clinical trials have been undertaken to understand the immune response, safety profile and efficacy of these vaccines as part of the regulatory process. Ongoing monitoring of the vaccines as they are rolled out in the population is important to continually ensure that clinical and public health guidance on the vaccination programme is built upon the best available evidence.

Public Health England (PHE) works closely with the Medicines and Healthcare Regulatory Agency (MHRA), NHS England, and other government, devolved administration and academic partners to monitor the COVID-19 vaccination programme. Details of the vaccine surveillance strategy are set on the Public Health England page [COVID-19: vaccine surveillance strategy \(1\)](#). As with all vaccines, the safety of COVID-19 vaccines is continuously [being monitored by the MHRA](#). They conclude that overall, the benefits of COVID-19 vaccines outweigh any potential risks [\(2\)](#).

Vaccine effectiveness

Several studies of vaccine effectiveness have been conducted in the UK which indicate that a single dose of either vaccine is between 55 and 70% effective against symptomatic disease, with higher levels of protection against severe disease including hospitalisation and death. Additional protection is seen after a second dose. There is now also evidence from a number of studies that the vaccines are effective at protecting against infection and transmission.

Population impact

The impact of the vaccination programme on the population is assessed by taking into account vaccine coverage, evidence on vaccine effectiveness and the latest COVID-19 disease surveillance indicators. Vaccine coverage tells us about the proportion of the population that have received 1 and 2 doses of COVID-19 vaccines. By 13 June 2021, the overall vaccine uptake in England for dose 1 was 56.1% and 40.9% for dose 2. In line with the programme rollout, coverage is highest in the oldest age groups.

Based on antibody testing of blood donors, 79.1% of the adult population now have antibodies to COVID-19 from either infection or vaccination compared to 14.8% that have antibodies from infection alone. Over 98% of adults aged 50 or older have antibodies from either infection or vaccination. The latest estimates indicate that the vaccination programme has averted 42,000 hospitalisations and over 14,000 deaths in older adults.

Vaccine effectiveness

Large clinical trials have been undertaken for each of the COVID-19 vaccines approved in the UK which found that they are highly efficacious at preventing symptomatic disease in the populations that were studied. It is important to continue to evaluate the effectiveness of vaccines in the 'real world', as this may differ to clinical trial efficacy. The clinical trials are also performed in order to be able to assess the efficacy of the vaccine against laboratory confirmed symptomatic disease with a relatively short follow up period so that effective vaccines can be introduced as rapidly as possible. Nevertheless, understanding the effectiveness against different outcomes (such as severe disease and onwards transmission), effectiveness in different subgroups of the population and understanding the duration of protection are equally important in decision making around which vaccines should be implemented as the programme evolves, who they should be offered to and whether booster doses are required.

Vaccine effectiveness is estimated by comparing rates of disease in vaccinated individuals to rates in unvaccinated individuals. Below we outline the latest real-world evidence on vaccine effectiveness from studies in UK populations. The majority of this data relates to a period when the main circulating virus was the Alpha variant, emerging data on effectiveness against symptomatic disease with the Delta variant is also summarised below. The findings are also summarised in Tables 1, 2 and 3.

Effectiveness against symptomatic disease

Vaccine effectiveness against symptomatic COVID-19 has been assessed in England based on community testing data linked to vaccination data from the NIMS and from the COVID Infection Survey. Current evidence is primarily from older adults, who were among the earliest group vaccinated. Estimates of vaccine effectiveness range from around 55 to 70% after 1 dose, with little evidence of variation by vaccine or age group (3, 4, 5). Data on 2 doses indicates effectiveness of around 65 to 90% (3, 6).

Effectiveness against hospitalisation

Several studies have estimated the effectiveness against hospitalisation in older adults, all of which indicate higher levels of protection against hospitalisation after a single dose than that seen against symptomatic disease, around 75 to 85% after 1 dose of the Pfizer-BioNTech or Oxford-AstraZeneca vaccine (3, 8, 9, 10). Data on 2 doses is only currently available for the Pfizer-BioNTech vaccine and indicates effectiveness against hospitalisation of around 90 to 95% (10).

Effectiveness against mortality

Data is also emerging which suggests high levels of protection against mortality. Studies linking community COVID-19 testing data, vaccination data and mortality data indicate that both the Pfizer-BioNTech and Oxford-AstraZeneca vaccines are around 75 to 80% effective at preventing death with COVID-19 after a single dose (3, 11). Data on 2 doses is only currently available for the Pfizer-BioNTech vaccine and indicates effectiveness against dying with COVID-19 of around 95 to 99% (11).

Effectiveness against infection

Although individuals may not develop symptoms of COVID-19 after vaccination, it is possible that they could still be infected with the virus and could transmit to others. Understanding how effective vaccines are at preventing infection is therefore important to predict the likely impact of the vaccination programme on the wider population. In order to estimate vaccine effectiveness against infection, repeat asymptomatic testing of a defined cohort of individuals is required. Studies have now reported on vaccine effectiveness against infection in healthcare workers, care home residents and the general population. With the Pfizer-BioNTech, estimates of effectiveness against infection range from around 55 to 70%, with the Oxford-AstraZeneca vaccine they range from around 60 to 70% (5, 12, 13, 14). Estimates for 2 doses are currently only available for the Pfizer-BioNTech vaccine and indicate effectiveness against infection of 70 to 90% (5,12).

Effectiveness against transmission

As described above, several studies have provided evidence that vaccines are effective at preventing infection. Uninfected individuals cannot transmit; therefore, the vaccines are also effective at preventing transmission. Data from Scotland has also shown that household contacts of vaccinated healthcare workers are at reduced risk of becoming a case, which is in line with the studies on infection (15). There may be additional benefit, beyond that due to prevention of infection, if some of those individuals who become infected despite vaccination are also at a reduced risk of transmitting (for example, because of reduced duration or level of viral shedding). A household transmission study in England found that household contacts of cases vaccinated with a single dose had approximately 35 to 50% reduced risk of becoming a confirmed case of COVID-19. This study used routine testing data so would only include household contacts that developed symptoms and went on to request a test via pillar 2. It cannot exclude asymptomatic secondary cases or mildly symptomatic cases who chose not to request a COVID-19 test (16).

Table 1. Summary of evidence on vaccine effectiveness against different outcomes (data relate to period when the Alpha variant dominated)

Outcome	Vaccine effectiveness			
	Pfizer-BioNTech		Oxford-AstraZeneca	
	1 dose	2 doses	1 dose	2 doses
Symptomatic disease	55-70%	85-90%	55-70%	65-90%
Hospitalisation	75-85%	90-95%	75-85%	No data
Mortality	75-80%	95-99%	75-80%	No data
Infection	55-70%	70-90%	60-70%	No data
Transmission (secondary cases)*	45-50%	No data	35-50%	No data

High Confidence	Evidence from multiple studies which is consistent and comprehensive
Medium Confidence	Evidence is emerging from a limited number of studies or with a moderately level of uncertainty
Low Confidence	Little evidence is available at present and results are inconclusive

* effectiveness in reducing symptomatic secondary cases in households of a symptomatic index case

Vaccine effectiveness against the Delta variant

Analysis of routine testing data linked to sequencing and S-gene target status has been used to estimate vaccine effectiveness against symptomatic disease using a test negative case control design. Methods and detailed results are available in [Effectiveness of COVID-19 vaccines against the Delta variant](#). After a single dose there was an 18% absolute reduction in vaccine effectiveness against symptomatic disease with Delta compared to Alpha, but only a modest reduction in vaccine effectiveness after 2 doses (Table 2).

Table 2. Vaccine effectiveness against symptomatic disease for Alpha and Delta variants

Vaccine Status	Vaccine Effectiveness	
	Alpha	Delta
Dose 1	49 (46 to 52)	31 (25 to 36)
Dose 2	88 (85 to 90)	80 (77 to 82)

Vaccine effectiveness against hospitalisation was estimated by evaluating hospitalisation rates via emergency care among symptomatic confirmed cases using survival analysis. Hazard ratios for hospitalisation are combined with odds ratios against symptomatic disease from the test negative case control analysis described above to estimate vaccine effectiveness against hospitalisation. Methods and detailed results are available [here \(17\)](#). Similar vaccine effectiveness against hospitalisation was seen with the Alpha and Delta variants (Table 3).

Table 3. Vaccine effectiveness against hospitalisation for Alpha and Delta variants

Vaccine Status	Vaccine Effectiveness	
	Alpha	Delta
Dose 1	78 (65 to 86)	75 (57 to 85)
Dose 2	92 (78 to 97)	94 (85 to 98)

Population impact

Vaccines typically have both direct effects on those who are vaccinated and indirect effects on the wider population due to a reduced probability that people will come into contact with an infected individual. The overall impact of the vaccination programme may therefore extend beyond that estimated through vaccine effectiveness analysis.

Estimating the impact of a vaccination programme is challenging as there is no completely unaffected control group. Furthermore, the effects of the vaccination programme need to be differentiated from that of other interventions (for example, lockdowns or outbreak control measures), changes in behaviour and any seasonal variation in COVID-19 activity.

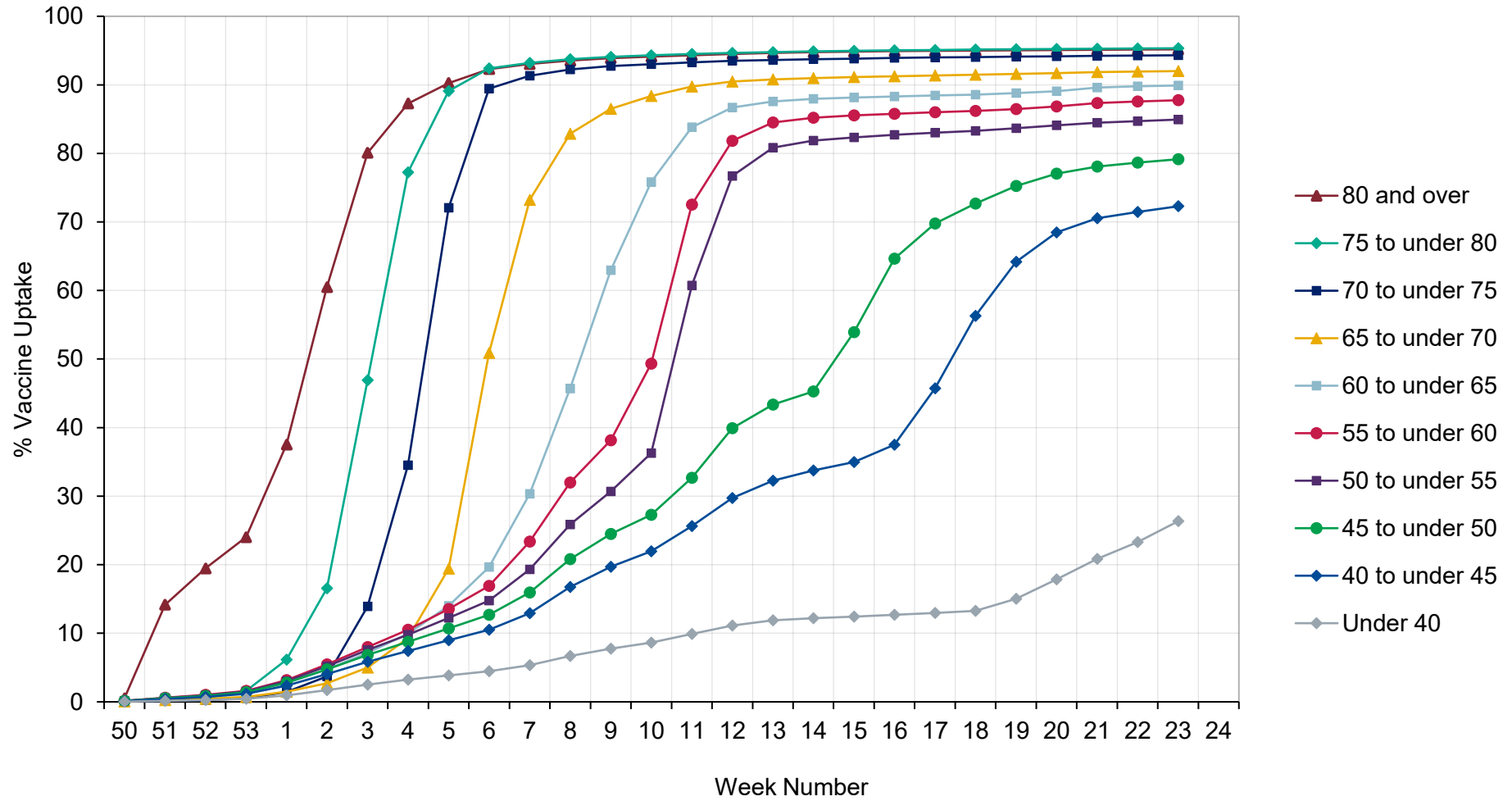
PHE and other government and academic partners monitor the impact of the of the vaccination programme on levels of COVID-19 antibodies in the population and different disease indicators, including hospitalisations and mortality. This is done through population-based testing and through modelling which combines vaccine coverage rates in different populations, estimates of vaccine effectiveness and disease surveillance indicators.

Vaccine Coverage

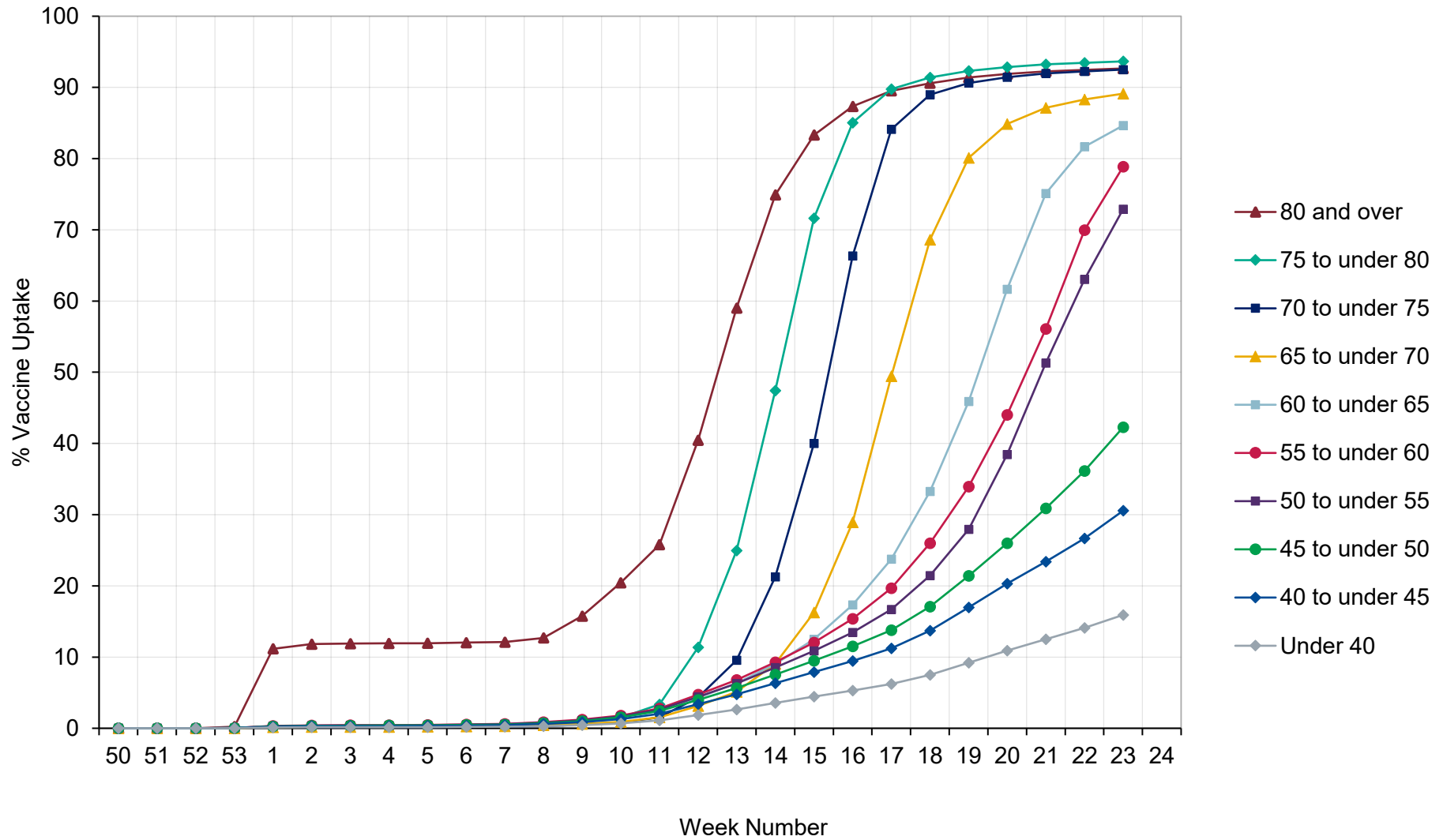
The data in this week's report covers the period from 8 December 2020 to 13 June 2021 (week 23) ([Figure 1](#)). It shows the provisional number and percentage of people in England who have had received 1 dose or 2 doses of a COVID-19 vaccination by age group and week since the start of the programme.

Figure 1. Cumulative weekly vaccine uptake by age

a) Dose 1



b) Dose 2



Vaccine impact on proportion of population with antibodies to COVID-19

PHE monitors the proportion of the population with antibodies to COVID-19 by testing samples provided by healthy adult blood donors aged 17 years and older, supplied by the NHS Blood and Transplant (NHS BT collection). This is important in helping to understand the extent of spread of COVID-19 infection (including asymptomatic infection) in the population and the impact of the vaccine programme. 250 samples from every geographic region in England are tested each week using 2 different laboratory tests, the Roche nucleoprotein (N) and Roche spike (S) antibody assays. This dual testing helps to distinguish between antibodies that are produced following natural COVID-19 infection and those that develop after vaccination. Nucleoprotein (Roche N) assays only detect post-infection antibodies, whereas spike (Roche S) assays will detect both post-infection antibodies and vaccine-induced antibodies. Thus, changes in the proportion of samples testing positive on the Roche N assay will reflect the effect of natural infection and spread of COVID-19 in the population. Increases in the proportion positive as measured by S antibody will reflect both infection and vaccination. Antibody responses reflect infection or vaccination occurring at least 2 to 3 weeks previously given the time taken to generate an antibody response.

In this report, we present the results using a 4-weekly average, of testing samples up to 6 June 2021, which takes account of the age and geographical distribution of the English population. Overall, the proportion of the population with antibodies using the Roche N and Roche S assays respectively were 14.8% and 79.1% for the period 10 May to 6 June (weeks 19 to 22) (Figure 2). This compares with 15.8% Roche N seropositivity and 71.8% Roche S seropositivity for the period of 15 April 2021 – 9 May 2021 (weeks 15 to 18). During this period seropositivity using the Roche N assay has remained stable suggesting there hasn't been significant ongoing spread of infection in the population and the continuing increase in seropositivity using the Roche S assay reflects the growing proportion of adults who have developed antibodies following vaccination.

Figure 3a and 3b show the proportion of the population with antibodies by age group. Roche N seropositivity has continued to plateau across most age groups and this was first observed in the 70 to 84 age group.

The pattern of increases in Roche S seropositivity which are observed follow the roll out of the vaccination programme with the oldest age groups offered vaccine first. (Figure 3b). Roche S seropositivity increased first in donors aged 70 to 84 and has plateaued since week 13, reaching 98.3% in weeks 19 to 22. Seropositivity has also plateaued since week 16 for those aged 60 to 69 reaching 98.4% in weeks 19 to 22. Plateauing in Roche S seropositivity has recently been observed in those aged 50 to 59 at 97.3% in weeks 15 to 18 2021 and 98.3% in weeks 19 to 22 2021. A notable increase has been

observed in the 40 to 49 year olds from 63.8% in weeks 15 to 18 to 90.0% in weeks 19 to 22. A small increase is now being observed in the 30 to 39 year olds increasing from 42.3% in weeks 15 to 18 to 57.5% in weeks 19 to 22.

The impact of the vaccination programme is clearly evident from the increases in the proportion of the adult population with antibodies based on Roche S testing. This is particularly evident amongst individuals aged 50 years and above who have been prioritised for vaccination as part of the phase 1 programme and since week 15 in those aged 40 to 49 and 30 to 39 years old as part of phase 2 of the vaccination programme. This is further supported by the earlier plateauing in the proportion testing positive using the Roche N assay, in older age groups and likely reflects the additional role of vaccination is having in reducing infection ahead of reductions seen from national restrictions alone in younger age groups.

Figure 2: Overall population weighted 4-weekly rolling SARS-CoV-2 antibody seroprevalence (% seropositive) in blood donors from the Roche S and Roche N assays.

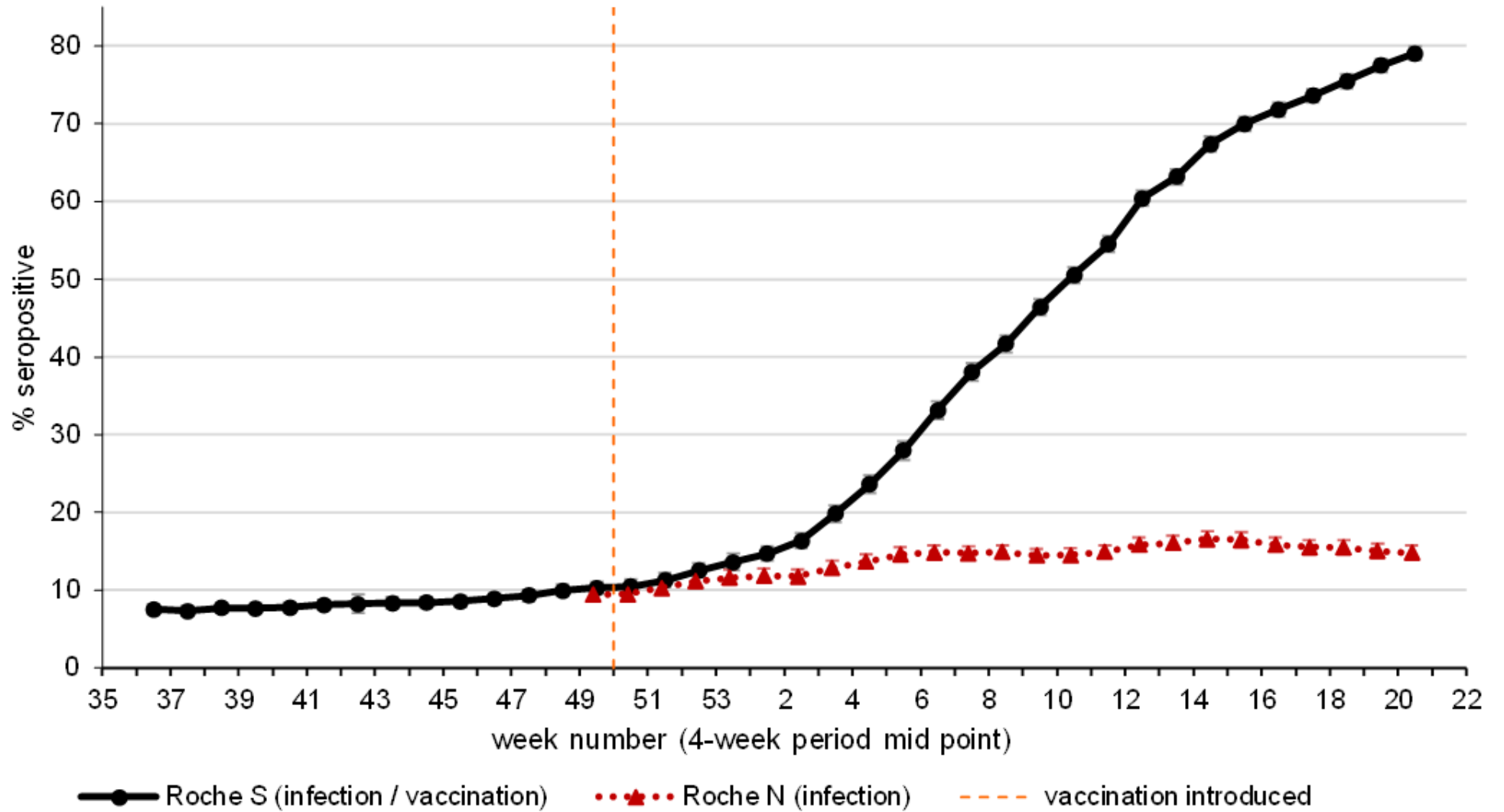
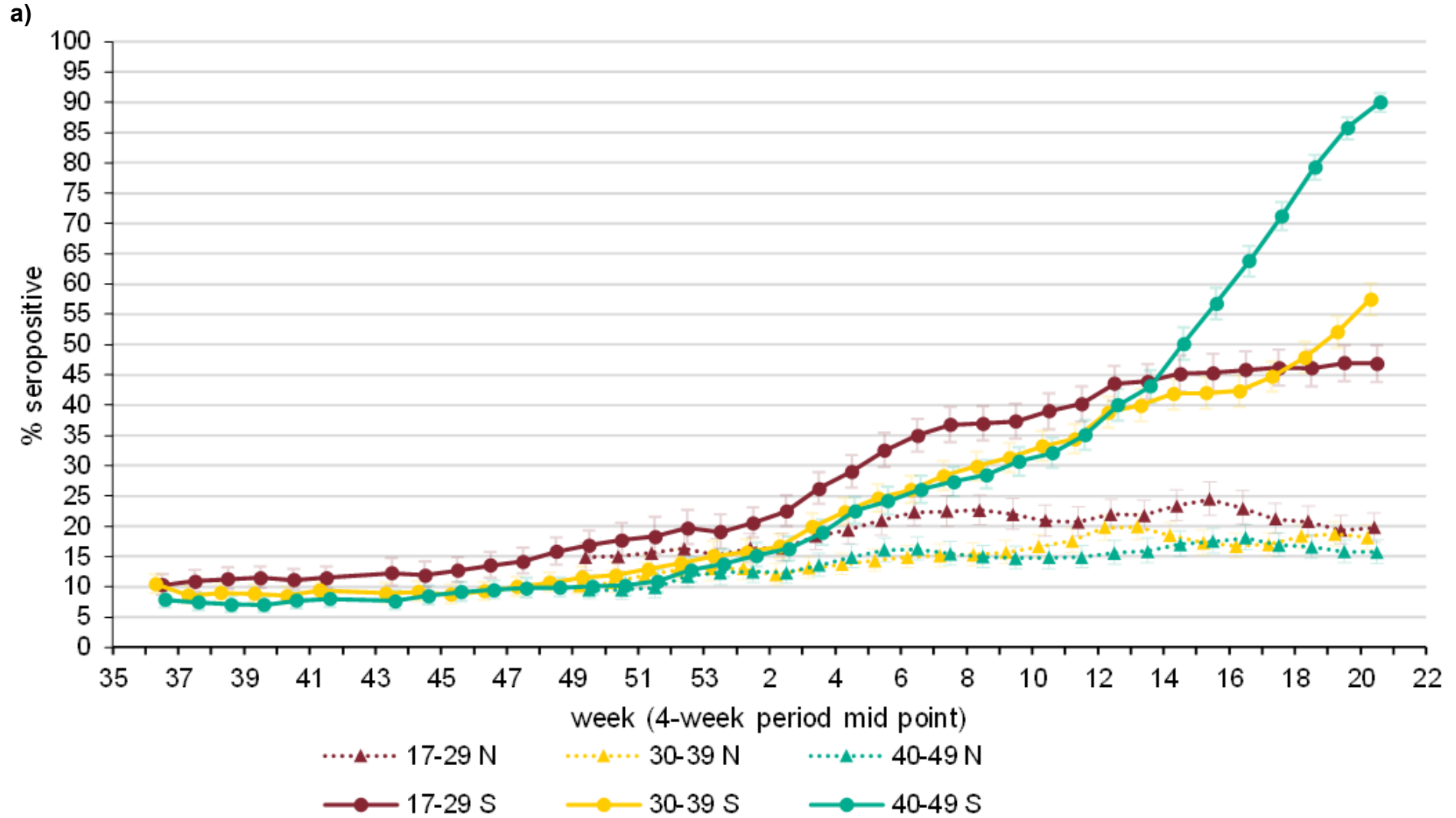
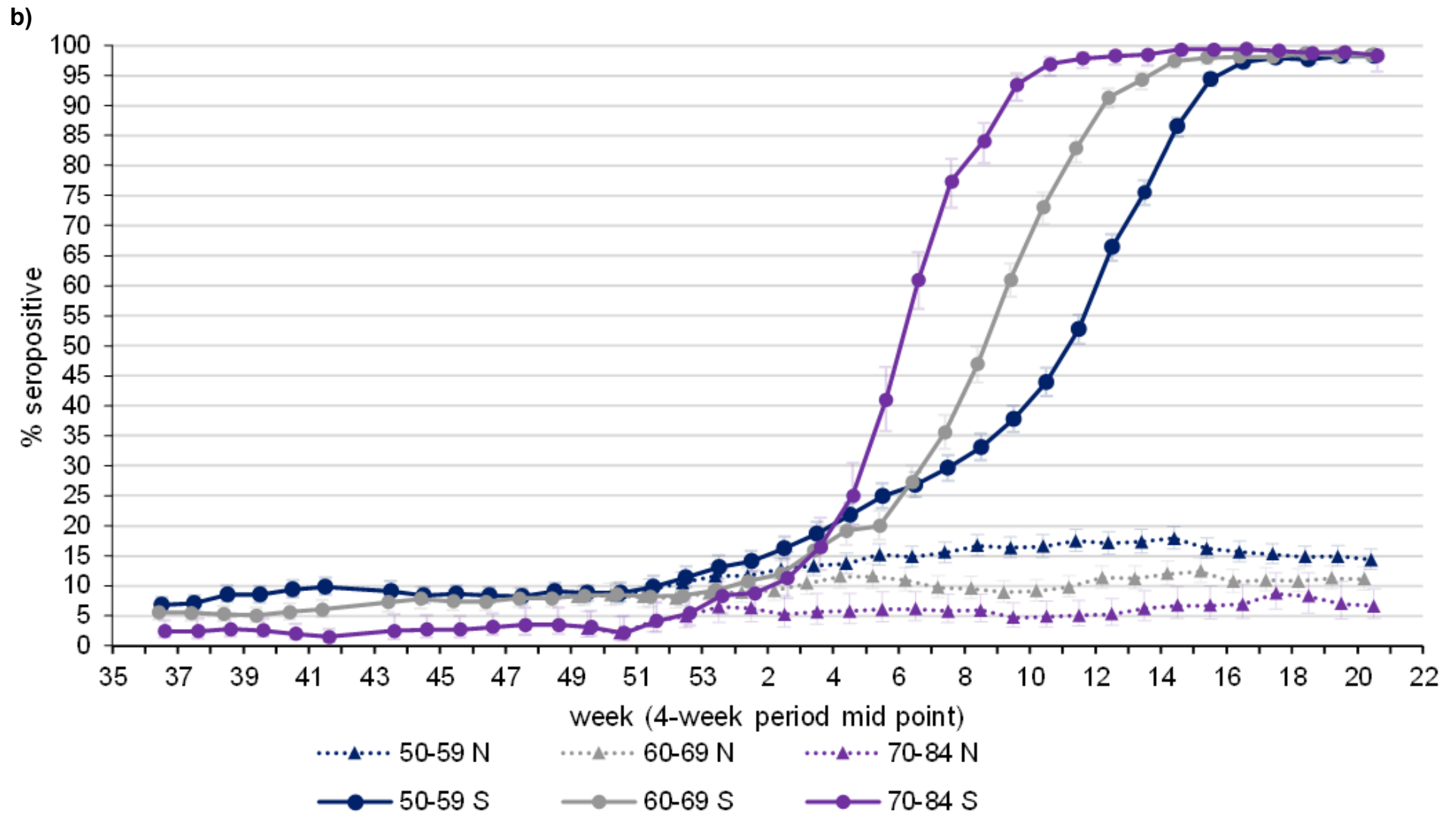


Figure 3: Population weighted 4-weekly rolling SARS-CoV-2 antibody seroprevalence (% seropositive) in blood donors from the Roche S and Roche N assays by a) age groups 17 to 29, 30 to 39 and 40 to 49, b) age group 50 to 59, 60 to 69 and 70 to 84.





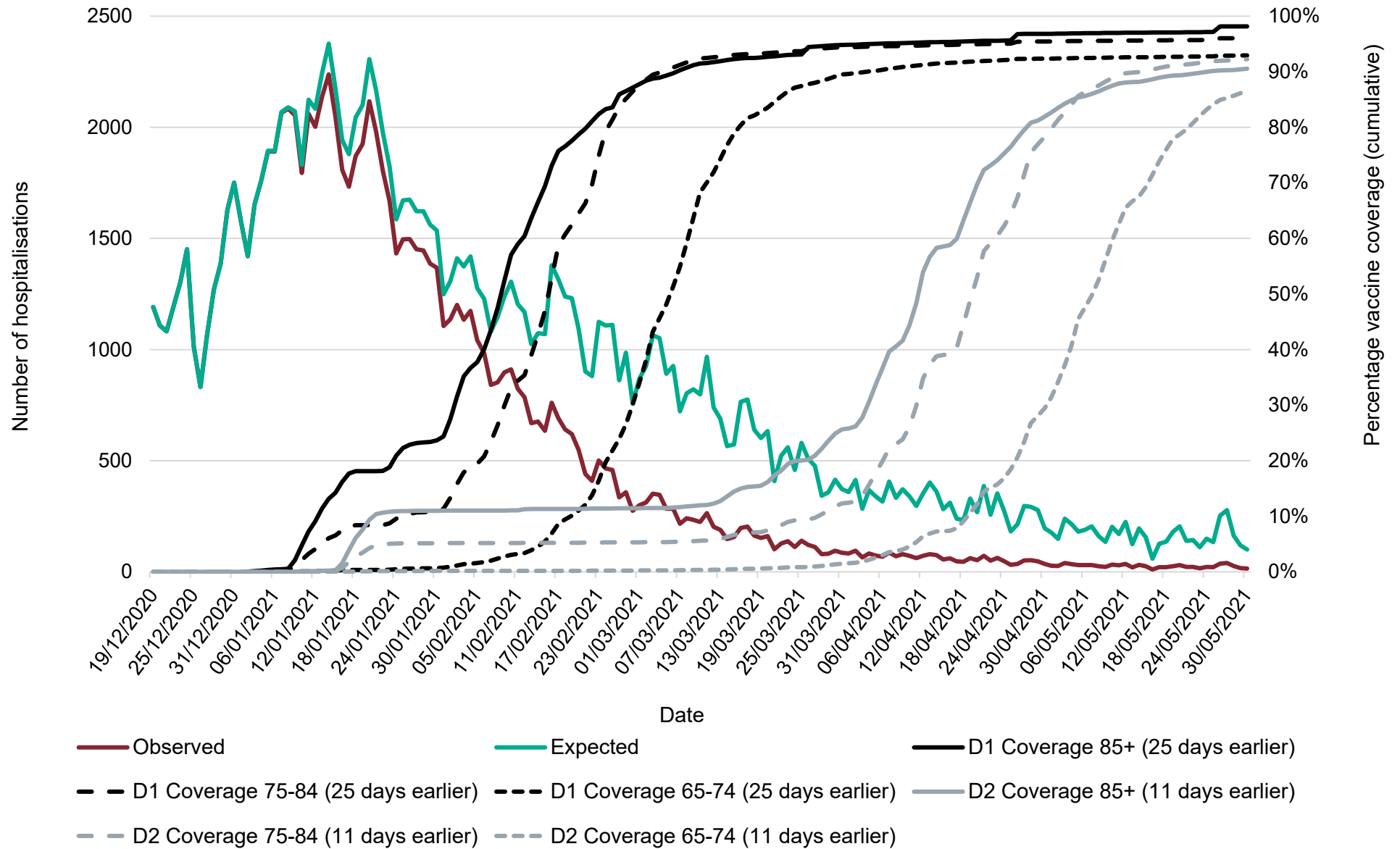
Hospitalisations

The number of hospitalisations averted by vaccination, can be estimated by considering vaccine effectiveness against hospitalisation, vaccine coverage and observed hospitalisations and through modelling using a range of parameters.

PHE estimates to 30 May 2021 based on the direct effect of vaccination and vaccine coverage rates, are that around 42,000 hospitalisations have been prevented in those aged 65 years and over in England (approximately 5,400 admissions in those aged 65 to 74, 16,300 in those aged 75 to 84, and 20,300 in those aged 85 and over) as a result of the vaccination programme (Figure 4). There is increasing evidence that vaccines prevent infection and transmission. The indirect effects of the vaccination programme will not be incorporated in this analysis, therefore the figure of 42,000 hospitalisations averted is likely to be an underestimate.

Please note this analysis will be updated every 2 weeks, the next update will be in week 25.

Figure 4. Plot of daily observed and expected COVID-19 hospitalisations in adults aged 65 and over



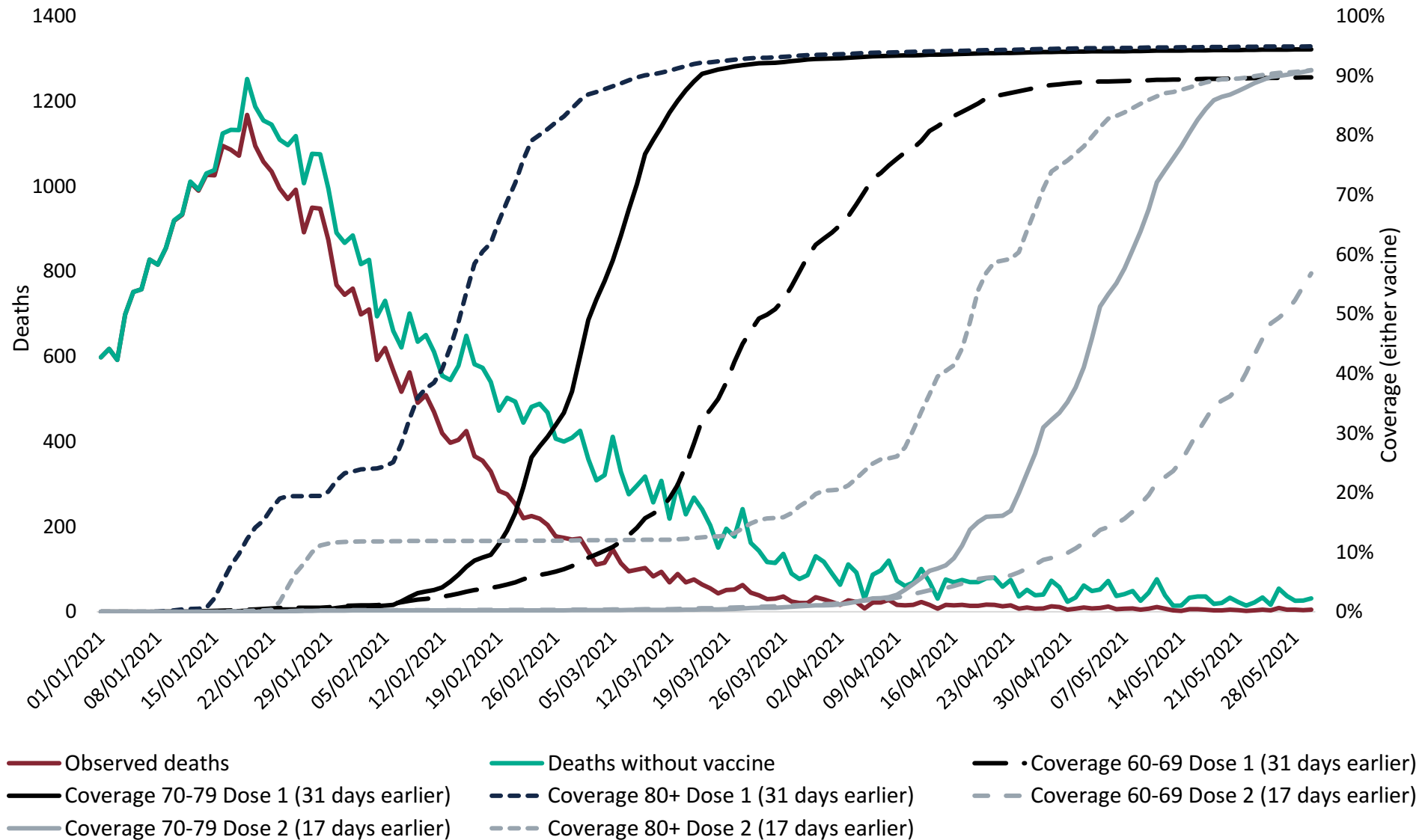
Deaths

The number of deaths averted by vaccination, can be estimated by considering vaccine effectiveness against mortality, vaccine coverage and observed deaths and through modelling using a range of parameters.

PHE estimates to 30 May 2021 based on the direct effect of vaccination and vaccine coverage rates, are that that 11,800 deaths were averted in individuals aged 80 years and older, 1,800 in individuals aged 70 to 79 and 400 in individuals aged 60 to 69 years giving a total of 14,000 deaths averted in individuals aged 60 years or older in England ([Figure 5](#)). There is increasing evidence that vaccines prevent infection and transmission. The indirect effects of the vaccination programme will not be incorporated in this analysis, therefore the figure of 14,000 deaths averted is likely to be an underestimate. Details of the methods used in this analysis are available from the [PHE monitoring of the effectiveness of COVID-19 vaccination \(18\)](#)

Please note this analysis will be updated every 2 weeks, the next update will be in week 25.

Figure 5: Daily observed COVID-19 deaths aged 60 and over, and expected numbers in the absence of vaccination using the back calculation method



References

1. Public Health England. [COVID-19: vaccine surveillance strategy 2021](#)
2. Medicines & Healthcare products Regulatory Agency. [Coronavirus vaccine – weekly summary of Yellow Card reporting 2021](#)
3. Lopez Bernal J, Andrews N, Gower C, Robertson C, Stowe J, Tessier E, and others. Effectiveness of the Pfizer-BioNTech and Oxford-AstraZeneca vaccines on covid-19 related symptoms, hospital admissions, and mortality in older adults in England: test negative case-control study. *BMJ*. 2021;373:n1088
4. Public Health England. [Public Health England vaccine effectiveness report – March 2021](#): Public Health England; 2021
5. Pritchard E, Matthews PC, Stoesser N, Eyre DW, Gethings O, Vihta K-D, and others. Impact of vaccination on SARS-CoV-2 cases in the community: a population-based study using the UK's COVID-19 Infection Survey. *medRxiv*. 2021:2021.04.22.21255913
6. Public Health England. [Public Health England COVID-19 vaccine surveillance report: 20 May 2021\(week 20\)](#): Public Health England; 2021
7. Lopez Bernal J, Andrews N, Gower C, Gallagher E, Simmons R, Thelwall S, and others. Effectiveness of COVID-19 vaccines against the B.1.617.2 variant. *medRxiv*. 2021.05.22.21257658
8. Vasileiou E, Simpson CR, Robertson C, Shi T, Kerr S, Agrawal U, and others. Effectiveness of first dose of COVID-19 vaccines against hospital admissions in Scotland: national prospective cohort study of 5.4 million people. 2021
9. Hyams C, Marlow R, Maseko Z, King J, Ward L, Fox K, and others. Assessing the effectiveness of bnt162b2 and chadox1ncov-19 covid-19 vaccination in prevention of hospitalisations in elderly and frail adults: A single centre test negative case-control study. 2021
10. Ismail SA, Vilaplana TG, Elgohari S, Stowe J, Tessier E, Andrews N, and others. Effectiveness of BNT162b2 mRNA and ChAdOx1 adenovirus vector COVID-19 vaccines on risk of hospitalisation among older adults in England: an observational study using surveillance data. *PHE Preprints*. 2021
11. Lopez Bernal J, Andrews N, Gower C, Stowe J, Tessier E, Simmons R, and others. Effectiveness of BNT162b2 mRNA vaccine and ChAdOx1 adenovirus vector vaccine on mortality following COVID-19. *PHE Preprints*. 2021
12. Hall VJ, Foulkes S, Saei A, Andrews N, Oguti B, Charlett A, and others. Effectiveness of BNT162b2 mRNA vaccine against infection and COVID-19 vaccine coverage in healthcare workers in England, multicentre prospective cohort study (the SIREN study). 2021
13. Shrotri M, Krutikov M, Palmer T, Giddings R, Azmi B, Subbarao S, and others. Vaccine effectiveness of the first dose of ChAdOx1 nCoV-19 and BNT162b2 against SARS-CoV-2 infection in residents of Long-Term Care Facilities (VIVALDI study). *medRxiv*. 2021:2021.03.26.21254391

14. Menni C, Klaser K, May A, Polidori L, Capdevila J, Louca P, and others. Vaccine side-effects and SARS-CoV-2 infection after vaccination in users of the COVID Symptom Study app in the UK: a prospective observational study. *The Lancet Infectious Diseases*. 2021
15. V Shah AS, Gribben C, Bishop J, Hanlon P, Caldwell D, Wood R, and others. Effect of vaccination on transmission of COVID-19: an observational study in healthcare workers and their households. *medRxiv*. 2021:2021.03.11.21253275
16. Harris RJ, Hall JA, Zaidi A, Andrews NJ, Dunbar JK, Dabrera G. **Impact of vaccination on household transmission of SARS-COV-2** in England Public Health England; 2021
17. Stowe J, Andrews N, Gower C, Gallagher E, Utsi L, Simmons R, and others. **Effectiveness of COVID-19 vaccine against hospital admission with the Delta (B.1.617.2) variant**. 2021
18. Public Health England. **Impact of COVID-19 vaccines on mortality in England: December 2020 to February 2021** 2021

About Public Health England

Public Health England exists to protect and improve the nation's health and wellbeing, and reduce health inequalities. We do this through world-leading science, research, knowledge and intelligence, advocacy, partnerships and the delivery of specialist public health services. We are an executive agency of the Department of Health and Social Care, and a distinct delivery organisation with operational autonomy. We provide government, local government, the NHS, Parliament, industry and the public with evidence-based professional, scientific and delivery expertise and support.

Public Health England
Wellington House
133-155 Waterloo Road
London SE1 8UG
Tel: 020 7654 8000

www.gov.uk/phe

Twitter: [@PHE_uk](https://twitter.com/PHE_uk)

www.facebook.com/PublicHealthEngland

© Crown copyright 2021

OGL

You may re-use this information (excluding logos) free of charge in any format or medium, under the terms of the Open Government Licence v3.0. To view this licence, visit [OGL](http://www.ogil.gov.uk). Where we have identified any third party copyright information you will need to obtain permission from the copyright holders concerned.

Published 21 June 2021

PHE gateway number: GOV-8694



PHE supports the UN Sustainable Development Goals

