

Defence Clothing Catalogue



SECTION 2-5: DMC CD FOOTWEAR

RELEASED: SEPT 2020

**Section 2-5, DMC CD
FOOTWEAR**

FULL CONTENT LISTING

Click on page number to go to item

OPERATIONAL FOOTWEAR	5
BOOTS, COMBAT, Cold/Wet Weather, Male, Black, HAIX	5
BOOTS, COMBAT, Cold/Wet Weather, Male, Black, ITURRI	6
BOOTS, COMBAT, Cold/Wet Weather, Male, Brown, HAIX	7
BOOTS, COMBAT, Cold/Wet Weather, Brown, Male, ITURRI	8
BOOTS, COMBAT, Cold/Wet Weather, Male, Brown, ITURRI	9
BOOTS, COMBAT, Cold/Wet Weather, Female, Black, HAIX	10
BOOTS, COMBAT, Cold/Wet Weather, Female, Black, ITURRI	11
BOOTS, COMBAT, Cold/Wet Weather, Female, Brown, HAIX	12
BOOTS, COMBAT, Cold/Wet Weather, Female, Brown, ITURRI	13
BOOTS, COMBAT, Cold/Wet Weather, Female, Brown ITURRI	14
BOOTS, COMBAT, Desert, High Liability, Male, Brown, ITURRI	15
BOOTS, COMBAT, Desert, High Liability Male, Brown, HAIX	15
BOOTS, COMBAT, Desert, High Liability, Male, Brown, ITURRI	16
BOOTS, COMBAT, Desert, High Liability, Male, Brown, HAIX	17
BOOTS, COMBAT, Desert, High Liability, Female, Brown ITURRI	18
BOOTS, COMBAT, Desert, High Liability, Female, Brown, ITURRI	19
BOOTS, COMBAT, Desert, High Liability, Female, Brown, HAIX	20
BOOTS, COMBAT, Desert, High Liability, Female, Brown HAIX	21
BOOTS, COMBAT, Desert Patrol, Male, Brown, ITURRI	22
BOOTS, COMBAT, Desert Patrol, Male, Brown, YDS	23
BOOTS, COMBAT, Desert Patrol, Female, Brown, ITURRI	24
BOOTS, DESERT, Non-Combat	25
BOOTS, COMBAT, High Liability, Male, Black,	26
BOOTS, COMBAT, High Liability, Male, Black, AKU	27
BOOTS, COMBAT, High Liability, Male, Brown, ITURRI-ALTBERG	28
BOOTS, COMBAT, High Liability, Male, Brown, ITURRI-ALTBERG	29
BOOTS, COMBAT, High Liability, Male, Brown, AKU	30
BOOTS, COMBAT, High Liability, Male, Brown, HAIX	31
BOOTS, COMBAT, High Liability, Female, Black,	32
BOOTS, COMBAT, High Liability, Black, Female, AKU	33
BOOTS, COMBAT, High Liability, Female, Brown,	34
BOOTS, COMBAT, High Liability, Female, Brown	35
BOOTS, COMBAT, High Liability, Female, Brown, HAIX	36
BOOTS, COMBAT, Jungle, Brown, Male, ITURRI	37
BOOTS, COMBAT, Patrol, Female, Black, YDS	38
BOOTS, Combat, Patrol, Male, Black, ITURRI	39
BOOTS, COMBAT, Patrol, Male, Brown, ITURRI	40
BOOTS, COMBAT, Patrol, Male, Brown, YDS	41
BOOTS, COMBAT, PATROL, Male, Brown, ITURRI	42
BOOTS, COMBAT, Patrol, Female, Black, YDS	43
BOOTS, COMBAT, PATROL, Female, Black, ITURRI	44

Section 2-5, DMC CD

FOOTWEAR

BOOTS, COMBAT, Patrol, Female, Brown, ITURRI	45
BOOTS, COMBAT, PATROL, Female, Brown, ITURRI	46
BOOTS, Tent	47
SPACERS, FOOTWEAR	48
BOOTS, Cold Wet Weather, SPACERS, MALE, ITURRI	48
BOOTS, PATROL SPACERS, MALE, ITURRI	49
BOOTS, COMBAT, High Liability, SPACERS, MALE, ITURRI-ALTBERG	50
BOOTS, COMBAT, High Liability, SPACERS, MALE, AKU	51
BOOTS, COMBAT, High Liability, SPACERS, FEMALE, ITURRI-ALTBERG	52
BOOTS, COMBAT, High Liability, SPACERS, FEMALE, AKU	53
BOOTS, Cold Wet Weather, SPACERS, FEMALE, ITURRI	54
BOOTS, PATROL, SPACERS, FEMALE, ITURRI	55
BOOTS, DESERT, COMBAT, High Liability, SPACERS, MALE, ITURRI	56
BOOTS, DESERT, COMBAT, High Liability, SPACERS, MALE, HAIX	57
BOOTS, DESERT, COMBAT, High Liability, SPACERS, FEMALE, ITURRI	58
BOOTS, DESERT, COMBAT, High Liability, SPACERS, FEMALE, HAIX	59
BARRACK AND PARADE FOOTWEAR	60
BOOTS, ANKLE, General Service, Ammunition Boots,	60
BOOTS, CHELSEA, with Spur Housing	61
BOOTS, George with Spur Housing	62
BOOTS, George With Spur Housing continued	63
BOOTS, George Without Spur Housing	64
BOOTS, George Without Spur Housing continued	65
SHOES, SERVICE, Male, Highland, BLACK,	66
SHOES, SERVICE, Piper's, Male, Black Brogue,	67
SHOES, SERVICE, Patent, Male, Black	68
SHOES, SERVICE, RN Officers, Black, Oxford Style, Without Toe Cap	69
SHOES, SERVICE, RAF Officers, With Toe Cap, Black, Oxford Style,	70
SHOES, SERVICE, Working, Without Toe Cap, Male, Black	71
SHOES, SERVICE, Working, Without Toe Cap, Male, Black, continued	72
SHOES, SERVICE, Working, With Toe Cap, Male, Black.	73
SHOES, SERVICE, Working, With Toe Cap, Male, Black continued	74
SHOES, SERVICE, Army Officers, Brown, Oxford Style, With Toe Cap	75
SHOES, SERVICE, White, Tropical, RN, Male	76
SHOES, SERVICE, Female, Black, Gibson Style, Without Toe Cap	77
SHOES, SERVICE, Female, Black, Gibson Style, Without Toe Cap continued	78
SHOES, SERVICE, Working, Without Toe Cap, Female, Black	79
SHOES, SERVICE, Female Brown. Gibson Style	80
SHOES, SERVICE, Female, Brown, Gibson Style continued	81
SHOES, Female, Court, Black, RAF Personnel	82
SHOES, NURSES, WARD, Gibson Style, Black, Tri-Service	83
SHOES, SERVICE, Female, White, Tropical	84
SAFETY AND LEISURE FOOTWEAR	85
BOOTS, Waders	85
BOOTS, KNEE, Rubber, Unisex, Wellington Style	86
BOOTS, SAFETY, Conductive, ITURRI	87

Section 2-5, DMC CD

FOOTWEAR

BOOTS, SAFETY, High Leg, Anti-Static, ITURRI	88
BOOTS, SAFETY, Combat, High Leg, Black Leather,	89
BOOTS, SAFETY, Black, ITURRI	89
BOOTS, SAFETY, Hot Weather, Black, ITURRI	90
SHOES, SAFETY, Male, Black Leather, ITURRI	91
TRAINER, SAFETY, Male, Black Leather/Suede	92
SHOES, SAFETY, Male, Black Leather, Padded Collar	93
SHOES, SAFETY, Male, Black Leather, Padded Collar	94
BOOTS, SAFETY, Male, Ankle	95
BOOTS, SAFETY, Male, Ankle, Black Leather	96
BOOTS, SAFETY, Male, Ankle, Black Leather	97
BOOTS, SAFETY, Male, Ankle, Black Leather	98
BOOTS, SAFETY, Male, Ankle Boots/High Leg, Black Leather	99
BOOTS, SAFETY, Male, Ankle Boots/High Leg, Black Leather	100
BOOTS, SAFETY, Rigger, Unisex,	101
BOOTS, SAFETY, Female, Leather/Suede, Padded Collar	102
TRAINER, SAFETY, Female,	103
SHOES, SAFETY, Female, Lace Up, Black Leather	104
BOOTS, SAFETY, Female, Plain Front, Black Leather	104
SHOES, SAFETY, Female, Black Leather	105
BOOTS, SAFETY, Welders, Unisex,	106
SHOES, SAFETY, Male, Composite Protection	107
BOOTS, SAFETY, Male, Ankle, Composite Protection	108
SHOES, SAFETY, Male, Composite Protection	109
BOOTS, Rubber, Safety, Unisex	110
BOOTS, SAFETY, Zip Ankle, Male, Black Leather	111
BOOTS, SAFETY, Ankle, Unisex	112
BOOTS, SAFETY, Male, Ankle, Black Leather	113
SANDALS, Warm Weather	114
SHOES FITNESS, Trainer Indoor Male.	115
SHOES, Fitness Trainer, Indoor, Female	116
SHOES, Fitness Trainer Outdoor, Male	117
SHOES, FITNESS, Trainer Male, Indoor/Outdoor	118
SHOES, FITNESS TRAINER, Female, Indoor/Outdoor.	119
SHOES, FITNESS TRAINER Outdoor, Female	120
ANCILLARY FOOTWEAR ITEMS AND SOCKS	121
FOOT MEASURING BOARD, Combat Assault Boot	121
FOOT MEASURING DEVICE	121
SOCKS, Extreme Cold Weather	122
SOCKS, Black, Long, Waterproof, MVP	122
SOCKS, Beige and White, Mid Calf Length	123
SOCKS, Black, General Issue	123
SOCKS, Black, Mid Calf Length	124
SOCKS, Khaki, Mid Calf Length	124
SOCKS, Red, Long	125
SOCKS, Stone, Long	125
SOCKS, White	126

Section 2-5, DMC CD
FOOTWEAR

SOCKS, ATHLETES, White	126
INDEX OF NATO STOCK NUMBERS.....	127

Section 2-5, DMC CD
FOOTWEAR

OPERATIONAL FOOTWEAR

**BOOTS, COMBAT,
Cold/Wet Weather, Male, Black, HAIX**



NSN:	8430-99-729-6613	DMC:	CD
Specification:	DC/PS/6631 HBKM	D of Q:	Pair
		PPQ:	001

Description: Boots, Combat Male. HAIX style, rubber Nitrile sole, leather upper, black, reinforced toe box, cleated, lacing fastening. (Available in brown and black)

Size Range: 1	
<u>NSN</u>	<u>SIZE</u>
8430-99-729-6613	14 Wide

Additional Information: This item has been superseded by 8430-99-371-3160 to 3184.

Section 2-5, DMC CD
FOOTWEAR

**BOOTS, COMBAT,
Cold/Wet Weather, Male, Black, ITURRI**



NSN:	8430-99-371-3160	DMC:	CD
Specification:	DC/PS/6934	D of Q:	Pair
		PPQ:	001

Description: Boots Combat. Cold/Wet Weather, Male. Black, ITURRI

Size Range: 22	
<u>NSN</u>	<u>SIZE</u>
8430-99-371-3160	5 Medium
8430-99-371-3161	5 Large
8430-99-371-3162	6 Medium
8430-99-371-3163	6 Large
8430-99-371-3164	7 Medium
8430-99-371-3165	7 Large
8430-99-371-3166	8 Medium
8430-99-371-3167	8 Large
8430-99-371-3168	9 Medium
8430-99-371-3169	9 Large
8430-99-371-3170	10 Medium
8430-99-371-3171	10 Large
8430-99-371-3172	11 Medium
8430-99-371-3173	11 Large
8430-99-371-3174	12 Medium
8430-99-371-3175	12 Large
8430-99-371-3176	13 Medium
8430-99-371-3177	13 Large
8430-99-371-3178	14 Medium
8430-99-371-3179	14 Large
8430-99-371-3180	15 Medium
8430-99-371-3181	15 Large

Additional Information:

Section 2-5, DMC CD
FOOTWEAR

**BOOTS, COMBAT,
Cold/Wet Weather, Male, Brown, HAIX**



NSN:	8430-99-255-3788	DMC:	CD
Specification:	DC/PS/6631 HBRM	D of Q:	Pair
		PPQ:	001

Description: Boots, Combat Male. HAIX style, rubber Nitrile sole, leather upper, brown, reinforced toe box, cleated, lacing fastening.

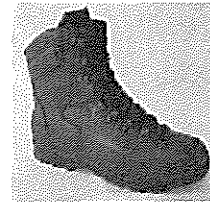
Size Range: 1

<u>NSN</u>	<u>SIZE</u>
8430-99-255-3788	14 Wide

Additional Information: This range has been superseded by 8430-99-371-3124 to 3148.

Section 2-5, DMC CD
FOOTWEAR

**BOOTS, COMBAT,
Cold/Wet Weather, Brown, Male, ITURRI**



ONSN:	8430-99-371-3124	DMC:	CD
Specification:	DC/PS/6934	D of Q:	Pair
		PPQ:	001

Description: Boots Combat. Cold/Wet Weather, Brown, Male, ITURRI.

Size Range: 22

<u>NSN</u>	<u>SIZE</u>
8430-99-371-3124	5 Medium
8430-99-371-3125	5 Large
8430-99-371-3126	6 Medium
8430-99-371-3127	6 Large
8430-99-371-3128	7 Medium
8430-99-371-3129	7 Large
8430-99-371-3130	8 Medium
8430-99-371-3131	8 Large
8430-99-371-3132	9 Medium
8430-99-371-3133	9 Large
8430-99-371-3134	10 Medium
8430-99-371-3135	10 Large
8430-99-371-3136	11 Medium
8430-99-371-3137	11 Large
8430-99-371-3138	12 Medium
8430-99-371-3139	12 Large
8430-99-371-3140	13 Medium
8430-99-371-3141	13 Large
8430-99-371-3142	14 Medium
8430-99-371-3143	14 Large
8430-99-371-3144	15 Medium
8430-99-371-3145	15 Large

Additional Information:

Section 2-5, DMC CD
FOOTWEAR

**BOOTS, COMBAT,
Cold/Wet Weather, Male, Brown, ITURRI**

NSN:	8430-99-512-2133	DMC:	CD
Specification:	DC/PS/6631 IBRM	D of Q:	Pair
		PPQ:	001

Description: Boots Combat; Male. Cold, wet weather, ITURRI style, rubber Nitrile sole, leather upper, brown upper, reinforced toe box, cleated, lacing fastening.

Size Range: 5

<u>NSN</u>	<u>SIZE</u>
8430-99-512-2133	5 Medium
8430-99-617-4406	14 Medium
8430-99-617-4407	14 Wide
8430-99-617-4408	15 Medium
8430-99-617-4409	15 Wide

Additional Information: This range has been superseded by 8430-99-371-3124 to 3148.

Section 2-5, DMC CD
FOOTWEAR

**BOOTS, COMBAT,
Cold/Wet Weather, Female, Black, HAIX**



NSN:	8435-99-729-6616	DMC:	CD
Specification:	DC/PS/6631 HBKW	D of Q:	Pair
		PPQ:	001

Description: Boots, Combat, Female. HAIX style, rubber Nitrile sole, leather upper, black, reinforced toe box, cleated, lacing fastening.

Size Range: 6	
<u>NSN</u>	<u>SIZE</u>
8435-99-729-6616	3 Medium
8435-99-729-6617	3 Wide
8435-99-729-6625	7 Wide
8435-99-729-6627	8 Wide
8435-99-729-6628	9 Medium
8435-99-729-6629	9 Wide

Additional Information:

Section 2-5, DMC CD
FOOTWEAR

**BOOTS, COMBAT,
Cold/Wet Weather, Female, Black,
ITURRI**



NSN: 8435-99-371-3182	DMC: CD
Specification: DC/PS/6934	D of Q: Pair
	PPQ: 001

Description: Boots, Combat, Female. Cold/Wet Weather. Black, ITURRI.

Size Range: 14

<u>NSN</u>	<u>SIZE</u>
8435-99-371-3182	3 Medium
8435-99-371-3183	3 Large
8435-99-371-3184	4 Medium
8435-99-371-3185	4 Large
8435-99-371-3186	5 Medium
8435-99-371-3187	5 Large
8435-99-371-3188	6 Medium
8435-99-371-3189	6 Large
8435-99-371-3190	7 Medium
8435-99-371-3191	7 Large
8435-99-371-3192	8 Medium
8435-99-371-3193	8 Large
8435-99-371-3194	9 Medium
8435-99-371-3195	9 Large

Additional Information:

Section 2-5, DMC CD
FOOTWEAR

**BOOTS, COMBAT,
Cold/Wet Weather, Female, Brown, HAIX**



NSN:	8435-99-255-3792	DMC:	CD
Specification:	DC/PS/6631 HBRW	D of Q:	Pair
		PPQ:	001

Description: Boots, Combat, Female. HAIX style, rubber Nitrile sole, leather upper, brown, reinforced toe box, cleated, lacing fastening.

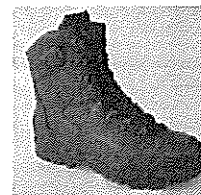
Size Range: 4

<u>NSN</u>	<u>SIZE</u>
8435-99-255-3792	3 Wide
8435-99-255-3794	4 Wide
8435-99-255-3799	7 Medium
8435-99-255-3804	9 Wide

Additional Information:

Section 2-5, DMC CD
FOOTWEAR

**BOOTS, COMBAT,
Cold/Wet Weather, Female, Brown,
ITURRI**



NSN: 8435-99-371-3146	DMC: CD
Specification: DC/PS/6934	D of Q: Pair
	PPQ: 001

Description: Boots, Combat, Female. Cold/Wet Weather. Brown, ITURRI.

Size Range: 14

<u>NSN</u>	<u>SIZE</u>
8435-99-371-3146	3 Medium
8435-99-371-3147	3 Large
8435-99-371-3148	4 Medium
8435-99-371-3149	4 Large
8435-99-371-3150	5 Medium
8435-99-371-3151	5 Large
8435-99-371-3152	6 Medium
8435-99-371-3153	6 Large
8435-99-371-3154	7 Medium
8435-99-371-3155	7 Large
8435-99-371-3156	8 Medium
8435-99-371-3157	8 Large
8435-99-371-3158	9 Medium
8435-99-371-3159	9 Large

Additional Information:

Section 2-5, DMC CD
FOOTWEAR

**BOOTS, COMBAT,
Cold/Wet Weather, Female, Brown ITURRI**



NSN:	8435-99-617-4413	DMC:	CD
Specification:	DC/PS/6631 IBRW	D of Q:	Pair
		PPQ:	001

Description: Boots Combat; Female. Cold, wet weather, ITURRI style, rubber Nitrile sole, leather upper, brown upper, reinforced toe box, cleated, lacing fastening.

Size Range: 7

<u>NSN</u>	<u>SIZE</u>
8435-99-617-4413	4 Wide
8435-99-617-4415	5 Wide
8435-99-617-4418	7 Medium
8435-99-617-4419	7 Wide
8435-99-617-4420	8 Medium
8435-99-617-4421	8 Wide
8435-99-617-4422	9 Medium

Additional Information:

Section 2-5, DMC CD
FOOTWEAR

**BOOTS, COMBAT,
Desert, High Liability, Male, Brown,
ITURRI**



NSN:	8430-99-512-2141	DMC:	CD
Specification:	DC/PS/6634 IBRM	D of Q:	Pair
		PPQ:	001

Description: Boots Combat; Male. High Liability, Desert, ITURRI style, rubber Nitrile sole, leather or leather/textile upper, brown upper, reinforced toe box, cleated, lacing fastening.

Size Range: 2

<u>NSN</u>	<u>SIZE</u>
8430-99-512-2141	5 Medium
8430-99-398-2384	12 Medium

Additional Information: This range of items has been superseded by 8430-99-167-5932 to 5956.

**BOOTS, COMBAT,
Desert, High Liability Male, Brown, HAIX**



NSN:	8430-99-344-8619	DMC:	CD
Specification:	DC/PS/6634 HBRM	D of Q:	Pair
		PPQ:	001

Description: Boots, Combat, Male. HAIX style, rubber Nitrile sole, leather or leather/textile upper, brown upper, reinforced toe box, cleated, lacing fastening.

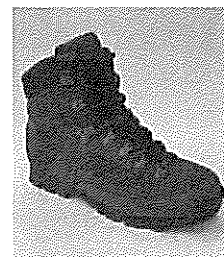
Size Range: 2

<u>NSN</u>	<u>SIZE</u>
8430-99-344-8619	12 Medium
8430-99-344-8621	13 Medium

Additional Information: This range of items has been superseded by 8430-99-217-0328 to 0352.

Section 2-5, DMC CD
FOOTWEAR

**BOOTS, COMBAT, Desert,
High Liability, Male, Brown, ITURRI**



NSN:	8430-99-167-5932	DMC:	CD
Specification:	DC/PS/6936	D of Q:	Pair
		PPQ:	001

Description: Boots Combat. Desert, High Liability, Male, Brown, ITURRI.

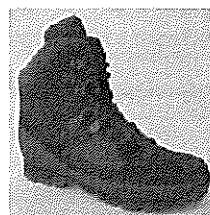
Size Range: 22

<u>NSN</u>	<u>SIZE</u>
8430-99-167-5932	5 Medium
8430-99-167-5933	5 Large
8430-99-167-5934	6 Medium
8430-99-167-5935	6 Large
8430-99-167-5936	7 Medium
8430-99-167-5937	7 Large
8430-99-167-5938	8 Medium
8430-99-167-5939	8 Large
8430-99-167-5940	9 Medium
8430-99-167-5941	9 Large
8430-99-167-5942	10 Medium
8430-99-167-5943	10 Large
8430-99-167-5944	11 Medium
8430-99-167-5945	11 Large
8430-99-167-5946	12 Medium
8430-99-167-5947	12 Large
8430-99-167-5948	13 Medium
8430-99-167-5949	13 Large
8430-99-167-5950	14 Medium
8430-99-167-5951	14 Large
8430-99-167-5952	15 Medium
8430-99-167-5953	15 Large

Additional Information:

Section 2-5, DMC CD
FOOTWEAR

**BOOTS, COMBAT, Desert,
High Liability, Male, Brown, HAIX**



NSN: 8430-99-217-0328	DMC: CD
Specification: DC/PS/6936	D of Q: Pair
	PPQ: 001

Description: Boots Combat. Desert, High Liability, Male, Brown, HAIX.

Size Range: 22	
<u>NSN</u>	<u>SIZE</u>
8430-99-217-0328	5 Medium
8430-99-217-0329	5 Large
8430-99-217-0330	6 Medium
8430-99-217-0331	6 Large
8430-99-217-0332	7 Medium
8430-99-217-0333	7 Large
8430-99-217-0334	8 Medium
8430-99-217-0335	8 Large
8430-99-217-0336	9 Medium
8430-99-217-0337	9 Large
8430-99-217-0338	10 Medium
8430-99-217-0339	10 Large
8430-99-217-0340	11 Medium
8430-99-217-0341	11 Large
8430-99-217-0342	12 Medium
8430-99-217-0343	12 Large
8430-99-217-0344	13 Medium
8430-99-217-0345	13 Large
8430-99-217-0346	14 Medium
8430-99-217-0347	14 Large
8430-99-217-0348	15 Medium
8430-99-217-0349	15 Large

Additional Information:

Section 2-5, DMC CD
FOOTWEAR

**BOOTS, COMBAT,
Desert, High Liability, Female, Brown
ITURRI**



NSN:	8435-99-398-2395	DMC:	CD
Specification:	DC/PS/6634 IBRW	D of Q:	Pair
		PPQ:	001

Description: Boots Combat; Female. High Liability, Desert, ITURRI style, rubber Nitrile sole, leather or leather/textile upper, brown upper, reinforced toe box, cleated, lacing fastening.

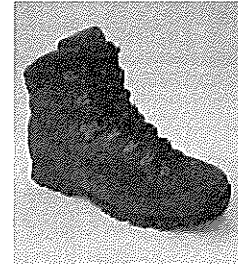
Size Range: 3

<u>NSN</u>	<u>SIZE</u>
8435-99-398-2395	4 Wide
8435-99-398-2396	5 Medium
8435-99-398-2404	9 Medium

Additional Information: This range of items has been superseded by 8435-99-167-5954 to 5967.

Section 2-5, DMC CD
FOOTWEAR

**BOOTS, COMBAT, Desert,
High Liability, Female, Brown, ITURRI**



NSN:	8435-99-167-5954	DMC:	CD
Specification:	DC/PS/6936	D of Q:	Pair
		PPQ:	001

Description: Boots, Combat, Desert, High Liability, Female, Brown, ITURRI.

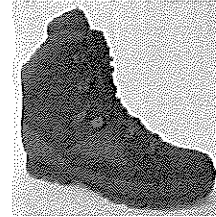
Size Range: 14

<u>NSN</u>	<u>SIZE</u>
8435-99-167-5954	3 Medium
8435-99-167-5955	3 Large
8435-99-167-5956	4 Medium
8435-99-167-5957	4 Large
8435-99-167-5958	5 Medium
8435-99-167-5959	5 Large
8435-99-167-5960	6 Medium
8435-99-167-5961	6 Large
8435-99-167-5962	7 Medium
8435-99-167-5963	7 Large
8435-99-167-5964	8 Medium
8435-99-167-5965	8 Large
8435-99-167-5966	9 Medium
8435-99-167-5967	9 Large

Additional Information:

Section 2-5, DMC CD
FOOTWEAR

**BOOTS, COMBAT, Desert,
High Liability, Female, Brown, HAIX**



NSN: 8435-99-217-0350	DMC: CD
Specification: DC/PS/6936	D of Q: Pair
	PPQ: 001

Description: Boots, Combat, Desert, High Liability, Female, Brown, HAIX.

Size Range: 14

<u>NSN</u>	<u>SIZE</u>
8435-99-217-0350	3 Medium
8435-99-217-0351	3 Large
8435-99-217-0352	4 Medium
8435-99-217-0353	4 Large
8435-99-217-0354	5 Medium
8435-99-217-0355	5 Large
8435-99-217-0356	6 Medium
8435-99-217-0357	6 Large
8435-99-217-0358	7 Medium
8435-99-217-0359	7 Large
8435-99-217-0360	8 Medium
8435-99-217-0361	8 Large
8435-99-217-0362	9 Medium
8435-99-217-0363	9 Large

Additional Information:

Section 2-5, DMC CD
FOOTWEAR

**BOOTS, COMBAT,
Desert, High Liability, Female, Brown HAIX**



NSN:	8435-99-344-8628	DMC:	CD
Specification:	DC/PS/6634 HBRW	D of Q:	Pair
		PPQ:	001

Description: Boots, Combat, Female. HAIX style, rubber Nitrile sole, leather or leather/textile upper, brown upper, reinforced toe box, cleated, lacing fastening.

Size Range: 2

<u>NSN</u>	<u>SIZE</u>
8435-99-344-8628	3 Wide
8435-99-344-8629	4 Medium

Additional Information: This range of items has been superseded by 8435-99-217-0350 to 0363.

Section 2-5, DMC CD
FOOTWEAR

**BOOTS, COMBAT,
Desert Patrol, Male, Brown, ITURRI**



NSN:	8430-99-755-0664	DMC:	CD
Specification:	DC/PS/6632 IBRM	D of Q:	Pair
		PPQ:	001

Description: Boots Combat; ITURRI style, Desert Patrol, rubber Nitrile sole, suede split or suede split/textile combination, brown upper, reinforced toe box, cleated, lacing fastening.

Size Range: 4

<u>NSN</u>	<u>SIZE</u>
8430-99-755-0664	13 Medium
8430-99-755-0667	14 Wide
8430-99-755-0668	15 Medium
8430-99-755-0669	15 Wide

Additional Information: This range of items has been superseded by 8430-99-936-3986 to 4007

Section 2-5, DMC CD
FOOTWEAR

**BOOTS, COMBAT,
Desert Patrol, Male, Brown, YDS**



NSN:	8430-99-262-1697	DMC:	CD
Specification:	DC/PS/6632 YBRM	D of Q:	Pair
		PPQ:	001

Description: Boots Combat. Male, YDS style, Desert Patrol Boots. Rubber Nitrile sole, suede split or suede split/textile combination upper, brown upper, reinforced toe box, cleated, lacing fastening.

Size Range: 2		
<u>NSN</u>		<u>SIZE</u>
8430-99-262-1697		13 Medium
8430-99-262-1701		15 Medium

Additional Information: This range of items has been superseded by 8430-99-936-3986 to 4007

Section 2-5, DMC CD
FOOTWEAR

**BOOTS, COMBAT,
Desert Patrol, Female, Brown, ITURRI**



NSN:	8435-99-755-0670	DMC:	CD
Specification:	DC/PS/6632 IBRW	D of Q:	Pair
		PPQ:	001

Description: Boots Combat; ITURRI style, female, desert Patrol, rubber Nitrile sole, suede split or suede split/textile combination, brown upper, reinforced toe box, cleated, lacing fastening.

Size Range: 9

<u>NSN</u>	<u>SIZE</u>
8435-99-755-0670	3 Medium
8435-99-755-0671	3 Wide
8435-99-755-0673	4 Wide
8435-99-755-0675	5 Wide
8435-99-755-0677	6 Wide
8435-99-755-0678	7 Medium
8435-99-755-0679	7 Wide
8435-99-755-0680	8 Medium
8435-99-755-0681	8 Wide

Additional Information: This range of items has been superseded by 8435-99-936-4008 to 4021.

**Section 2-5, DMC CD
FOOTWEAR**

**BOOTS, DESERT,
Non-Combat**



NSN: 8430-99-241-6131	DMC: CD
Specification: UK/SC/5837 D00074	D of Q: Pair
	PPQ: 001

Description: Boots, Desert, Non-Combat. Chukka style. Leather upper and lined quarters. Non-woven textile vamp/lining. Rubber sole and heel with cleated out sole. No toe cap. Lace fastening.

Size Range: 14

<u>NSN</u>	<u>SIZE</u>
8430-99-241-6131	2
8430-99-241-6132	3
8430-99-241-6133	4
8430-99-241-6134	5
8430-99-241-6135	6
8430-99-241-6136	7
8430-99-241-6137	8
8430-99-241-6138	9
8430-99-241-6139	10
8430-99-241-6140	11
8430-99-241-6141	12
8430-99-241-6142	13
8430-99-241-6143	14
8430-99-241-6144	15

Additional Information: This range supersedes 8430-99-978-4331/4341 and 8430-99-282-2342/2343. For use by personnel in an office or barrack environment. Not for use in operational theatres.

Section 2-5, DMC CD
FOOTWEAR

BOOTS, COMBAT, High Liability, Male, Black, ITURRI-ALTBURG	
NSN: 8430-99-889-0698	DMC: CD
Specification: DC/PS/6937	D of Q: Pair
PPQ: 001	



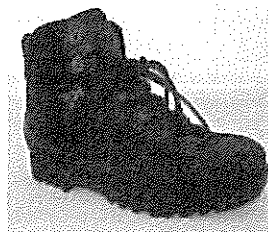
Description: Boots Combat. High Liability, Male, Black. ITURRI-ALTBURG.

Size Range: 22	<u>SIZE</u>
<u>NSN</u>	
8430-99-889-0698	5 Medium
8430-99-889-0699	5 Large
8430-99-889-0700	6 Medium
8430-99-889-0701	6 Large
8430-99-889-0702	7 Medium
8430-99-889-0703	7 Large
8430-99-889-0704	8 Medium
8430-99-889-0705	8 Large
8430-99-889-0706	9 Medium
8430-99-889-0707	9 Large
8430-99-889-0708	10 Medium
8430-99-889-0709	10 Large
8430-99-889-0710	11 Medium
8430-99-889-0711	11 Large
8430-99-889-0712	12 Medium
8430-99-889-0713	12 Large
8430-99-889-0714	13 Medium
8430-99-889-0715	13 Large
8430-99-889-0716	14 Medium
8430-99-889-0717	14 Large
8430-99-889-0718	15 Medium
8430-99-889-0719	15 Large

Additional Information:

Section 2-5, DMC CD
FOOTWEAR

**BOOTS, COMBAT, High Liability,
Male, Black, AKU**



NSN: 8430-99-157-8158	DMC: CD
Specification: DC/PS/6937	D of Q: Pair
	PPQ: 001

Description: Boots Combat. High Liability, Male, Black, AKU.

Size Range: 22	
<u>NSN</u>	<u>SIZE</u>
8430-99-157-8158	5 Medium
8430-99-157-8159	5 Large
8430-99-157-8160	6 Medium
8430-99-157-8161	6 Large
8430-99-157-8162	7 Medium
8430-99-157-8163	7 Large
8430-99-157-8164	8 Medium
8430-99-157-8165	8 Large
8430-99-157-8166	9 Medium
8430-99-157-8167	9 Large
8430-99-157-8168	10 Medium
8430-99-157-8169	10 Large
8430-99-157-8170	11 Medium
8430-99-157-8171	11 Large
8430-99-157-8172	12 Medium
8430-99-157-8173	12 Large
8430-99-157-8174	13 Medium
8430-99-157-8175	13 Large
8430-99-157-8176	14 Medium
8430-99-157-8177	14 Large
8430-99-157-8178	15 Medium
8430-99-157-8179	15 Large

Additional Information:

Section 2-5, DMC CD
FOOTWEAR

**BOOTS, COMBAT,
High Liability, Male, Brown,
ITURRI-ALTBERG**



NSN:	8430-99-216-0818	DMC:	CD
Specification:	DC/PS/6635 IBRM	D of Q:	Pair
		PPQ:	001

Description: Boots Combat; Male. High Liability, ITURRI style, rubber Nitrile sole, leather or leather/textile upper, brown upper, reinforced toe box, cleated, lacing fastening. ITURRI-ALTBERG.

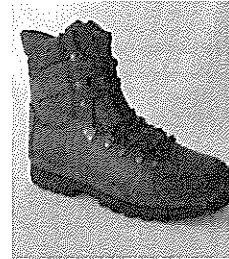
Size Range: 3

<u>NSN</u>	<u>SIZE</u>
8430-99-216-0818	14 Wide
8430-99-216-0819	15 Medium
8430-99-216-0820	15 Wide

Additional Information: This range has been superseded by 8430-99-332-6143 to 6167.

Section 2-5, DMC CD
FOOTWEAR

**BOOTS, COMBAT, High Liability,
Male, Brown, ITURRI-ALTBERG**



NSN: 8430-99-332-6143	DMC: CD
Specification: DC/PS/6937	D of Q: Pair
	PPQ: 001

Description: Boots Combat. High Liability, Male, Brown. ITURRI-ALTBERG.

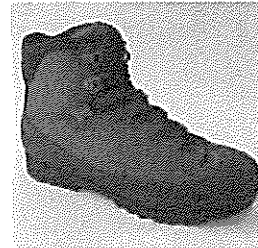
Size Range: 22

<u>NSN</u>	<u>SIZE</u>
8430-99-332-6143	5 Medium
8430-99-332-6144	5 Large
8430-99-332-6145	6 Medium
8430-99-332-6146	6 Large
8430-99-332-6147	7 Medium
8430-99-332-6148	7 Large
8430-99-332-6149	8 Medium
8430-99-332-6150	8 Large
8430-99-332-6151	9 Medium
8430-99-332-6152	9 Large
8430-99-332-6153	10 Medium
8430-99-332-6154	10 Large
8430-99-332-6155	11 Medium
8430-99-332-6156	11 Large
8430-99-332-6157	12 Medium
8430-99-332-6158	12 Large
8430-99-332-6159	13 Medium
8430-99-332-6160	13 Large
8430-99-332-6161	14 Medium
8430-99-332-6162	14 Large
8430-99-332-6163	15 Medium
8430-99-332-6164	15 Large

Additional Information:

Section 2-5, DMC CD
FOOTWEAR

**BOOTS, COMBAT, High Liability,
Male, Brown, AKU**



NSN: 8430-99-670-1154	DMC: CD
Specification: DC/PS/6937	D of Q: Pair
	PPQ: 001

Description: Boots Combat. High Liability, Male, Brown. AKU.

Size Range: 22

<u>NSN</u>	<u>SIZE</u>
8430-99-670-1154	5 Medium
8430-99-670-1155	5 Large
8430-99-670-1156	6 Medium
8430-99-670-1157	6 Large
8430-99-670-1158	7 Medium
8430-99-670-1159	7 Large
8430-99-670-1160	8 Medium
8430-99-670-1161	8 Large
8430-99-670-1162	9 Medium
8430-99-670-1163	9 Large
8430-99-670-1164	10 Medium
8430-99-670-1165	10 Large
8430-99-670-1166	11 Medium
8430-99-670-1167	11 Large
8430-99-670-1168	12 Medium
8430-99-670-1169	12 Large
8430-99-670-1170	13 Medium
8430-99-670-1171	13 Large
8430-99-670-1172	14 Medium
8430-99-670-1173	14 Large
8430-99-670-1174	15 Medium
8430-99-670-1175	15 Large

Additional Information:

Section 2-5, DMC CD
FOOTWEAR

**BOOTS, COMBAT,
High Liability, Male, Brown, HAIX**



NSN:	8430-99-512-2159	DMC:	CD
Specification:	DC/PS/6635 HBRM	D of Q:	Pair
		PPQ:	001

Description: Boots, Combat Male. HAIX style, rubber Nitrile sole, leather or leather/textile upper, brown upper, reinforced toe box, cleated, lacing fastening.

Size Range: 14

<u>NSN</u>	<u>SIZE</u>
8430-99-512-2159	5 Medium
8430-99-512-2160	5 Wide
8430-99-727-0834	7 Wide
8430-99-727-0835	8 Medium
8430-99-727-0836	8 Wide
8430-99-727-0837	9 Medium
8430-99-727-0838	9 Wide
8430-99-727-0839	10 Medium
8430-99-727-0840	10 Wide
8430-99-727-0841	11 Medium
8430-99-727-0842	11 Wide
8430-99-727-0843	12 Medium
8430-99-727-0847	14 Medium
8430-99-727-0848	14 Wide

Additional Information: This range has been superseded by 8430-99-670-1154 to 1178.

Section 2-5, DMC CD
FOOTWEAR

**BOOTS, COMBAT,
High Liability, Female, Black,
ITURRI**



NSN:	8435-99-889-0720	DMC:	CD
Specification:	DC/PS/6937	D of Q:	Pair
		PPQ:	001

Description: Boots, Combat, High Liability, Female, Black. ITURRI.

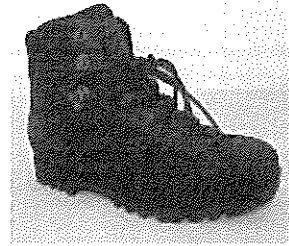
Size Range: 14

<u>NSN</u>	<u>SIZE</u>
8435-99-889-0720	3 Medium
8435-99-889-0721	3 Large
8435-99-889-0722	4 Medium
8435-99-889-0723	4 Large
8435-99-889-0724	5 Medium
8435-99-889-0725	5 Large
8435-99-889-0726	6 Medium
8435-99-889-0727	6 Large
8435-99-889-0728	7 Medium
8435-99-889-0729	7 Large
8435-99-889-0730	8 Medium
8435-99-889-0731	8 Large
8435-99-889-0732	9 Medium
8435-99-889-0733	9 Large

Additional Information:

Section 2-5, DMC CD
FOOTWEAR

**BOOTS, COMBAT,
High Liability, Black, Female, AKU**



NSN:	8435-99-157-8180	DMC:	CD
Specification:	DC/PS/6937	D of Q:	Pair
		PPQ:	001

Description: Boots, Combat, High Liability, Black, Female, AKU.

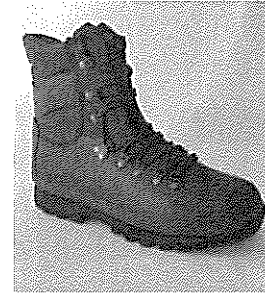
Size Range: 14

<u>NSN</u>	<u>SIZE</u>
8435-99-157-8180	3 Medium
8435-99-157-8181	3 Large
8435-99-157-8182	4 Medium
8435-99-157-8183	4 Large
8435-99-157-8184	5 Medium
8435-99-157-8185	5 Large
8435-99-157-8186	6 Medium
8435-99-157-8187	6 Large
8435-99-157-8188	7 Medium
8435-99-157-8189	7 Large
8435-99-157-8190	8 Medium
8435-99-157-8191	8 Large
8435-99-157-8192	9 Medium
8435-99-157-8193	9 Large

Additional Information:

Section 2-5, DMC CD
FOOTWEAR

**BOOTS, COMBAT,
High Liability, Female, Brown,
ITURRI**



NSN:	8435-99-332-6165	DMC:	CD
Specification:	DC/PS/6937	D of Q:	Pair
		PPQ:	001

Description: Boots, Combat. High Liability, Female, Brown. ITURRI.

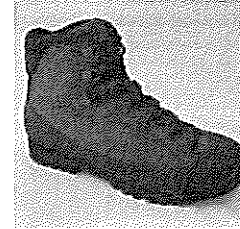
Size Range: 14

<u>NSN</u>	<u>SIZE</u>
8435-99-332-6165	3 Medium
8435-99-332-6166	3 Large
8435-99-332-6167	4 Medium
8435-99-332-6168	4 Large
8435-99-332-6169	5 Medium
8435-99-332-6170	5 Large
8435-99-332-6171	6 Medium
8435-99-332-6172	6 Large
8435-99-332-6173	7 Medium
8435-99-332-6174	7 Large
8435-99-332-6175	8 Medium
8435-99-332-6176	8 Large
8435-99-332-6177	9 Medium
8435-99-332-6178	9 Large

Additional Information:

Section 2-5, DMC CD
FOOTWEAR

**BOOTS, COMBAT,
High Liability, Female, Brown
AKU**



NSN:	8435-99-670-1176	DMC:	CD
Specification:	DC/PS/6937	D of Q:	Pair
		PPQ:	001

Description: Boots, Combat. High Liability, Female, Brown. AKU.

Size Range: 14

<u>NSN</u>	<u>SIZE</u>
8435-99-670-1176	3 Medium
8435-99-670-1177	3 Large
8435-99-670-1178	4 Medium
8435-99-670-1179	4 Large
8435-99-670-1180	5 Medium
8435-99-670-1181	5 Large
8435-99-670-1182	6 Medium
8435-99-670-1183	6 Large
8435-99-670-1184	7 Medium
8435-99-670-1185	7 Large
8435-99-670-1186	8 Medium
8435-99-670-1187	8 Large
8435-99-670-1188	9 Medium
8435-99-670-1189	9 Large

Additional Information:

Section 2-5, DMC CD
FOOTWEAR

**BOOTS, COMBAT,
High Liability, Female, Brown, HAIX**



NSN:	8435-99-727-0852	DMC:	CD
Specification:	DC/PS/6635 HBRW	D of Q:	Pair
		PPQ:	001

Description: Boots, Combat, Female. HAIX style, rubber Nitrile sole, leather or leather/textile upper, brown upper, reinforced toe box, cleated, lacing fastening.

Size Range: 7	
<u>NSN</u>	<u>SIZE</u>
8435-99-727-0852	3 Wide
8435-99-727-0853	4 Medium
8435-99-727-0856	5 Wide
8435-99-727-0857	6 Medium
8435-99-727-0859	7 Medium
8435-99-727-0862	8 Wide
8435-99-727-0864	9 Wide

Additional Information:

Section 2-5, DMC CD
FOOTWEAR

**BOOTS, COMBAT, Jungle,
Brown, Male, ITURRI**



NSN:	8430-99-243-6586	DMC:	CD
Specification:	DC/PS/6933	D of Q:	Pair
		PPQ:	001

Description: Boots Combat. Jungle, Male, Brown, ITURRI.

Size Range: 22

<u>NSN</u>	<u>SIZE</u>
8430-99-243-6586	5 Medium
8430-99-243-6587	5 Large
8430-99-243-6588	6 Medium
8430-99-243-6589	6 Large
8430-99-243-6590	7 Medium
8430-99-243-6591	7 Large
8430-99-243-6592	8 Medium
8430-99-243-6593	8 Large
8430-99-243-6594	9 Medium
8430-99-243-6595	9 Large
8430-99-243-6596	10 Medium
8430-99-243-6597	10 Large
8430-99-243-6598	11 Medium
8430-99-243-6599	11 Large
8430-99-243-6600	12 Medium
8430-99-243-6601	12 Large
8430-99-243-6602	13 Medium
8430-99-243-6603	13 Large
8430-99-243-6604	14 Medium
8430-99-243-6605	14 Large
8430-99-243-6606	15 Medium
8430-99-243-6607	15 Large

Additional Information:

Section 2-5, DMC CD
FOOTWEAR

BOOTS, COMBAT, Patrol, Female, Black, YDS	
NSN: 8430-99-584-6687	DMC: CD
Specification: DC/PS/6633 YBKM	D of Q: Pair
PPQ: 001	



Description: Boots Combat. Male, YDS style, rubber Nitrile sole, leather or leather/textile upper, black upper, reinforced toe box, cleated, lacing fastening.

Size Range: 7	
<u>NSN</u>	<u>SIZE</u>
8430-99-584-6687	12 Wide
8430-99-584-6688	13 Medium
8430-99-584-6689	13 Wide
8430-99-584-6690	14 Medium
8430-99-584-6691	14 Wide
8430-99-584-6692	15 Medium
8430-99-584-6693	15 Wide

Additional Information: This range has been superseded by 8430-99-936-4022 to 4046.

**Section 2-5, DMC CD
FOOTWEAR**

**BOOTS, Combat, Patrol,
Male, Black, ITURRI**



NSN:	8430-99-936-4022	DMC:	CD
Specification:	DC/PS/6935	D of Q:	Pair
		PPQ:	001

Description: Boots, Combat, Patrol, Male, Black, ITURRI.

Size Range: 22

<u>NSN</u>	<u>SIZE</u>
8430-99-936-4022	5 Medium
8430-99-936-4023	5 Large
8430-99-936-4024	6 Medium
8430-99-936-4025	6 Large
8430-99-936-4026	7 Medium
8430-99-936-4027	7 Large
8430-99-936-4028	8 Medium
8430-99-936-4029	8 Large
8430-99-936-4030	9 Medium
8430-99-936-4031	9 Large
8430-99-936-4032	10 Medium
8430-99-936-4033	10 Large
8430-99-936-4034	11 Medium
8430-99-936-4035	11 Large
8430-99-936-4036	12 Medium
8430-99-936-4037	12 Large
8430-99-936-4038	13 Medium
8430-99-936-4039	13 Large
8430-99-936-4040	14 Medium
8430-99-936-4041	14 Large
8430-99-936-4042	15 Medium
8430-99-936-4043	15 Large

Additional Information:

Section 2-5, DMC CD
FOOTWEAR

**BOOTS, COMBAT,
Patrol, Male, Brown, ITURRI**



NSN:	8430-99-512-2149	DMC:	CD
Specification:	DC/PS/6633 IBRM	D of Q:	Pair
		PPQ:	001

Description: Boots Combat; Male. ITURRI style, Patrol, rubber Nitrile sole, leather or leather/textile upper, brown upper, reinforced toe box, cleated, lacing fastening.

Size Range: 15

<u>NSN</u>	<u>SIZE</u>
8430-99-512-2149	5 Medium
8430-99-152-9908	6 Medium
8430-99-152-9909	6 Wide
8430-99-152-9910	7 Medium
8430-99-152-9911	7 Wide
8430-99-152-9912	8 Medium
8430-99-152-9913	8 Wide
8430-99-152-9914	9 Medium
8430-99-152-9915	9 Wide
8430-99-152-9917	10 Wide
8430-99-152-9921	12 Wide
8430-99-152-9922	13 Medium
8430-99-152-9925	14 Wide
8430-99-152-9926	15 Medium
8430-99-152-9927	15 Wide

Additional Information: This range has been superseded by 8430-99-936-3986 to 4010.

Section 2-5, DMC CD
FOOTWEAR

**BOOTS, COMBAT,
Patrol, Male, Brown, YDS**



NSN:	8430-99-152-9979	DMC:	CD
Specification:	DC/PS/6633 YBRM	D of Q:	Pair
		PPQ:	001

Description: Boots Combat. Male, YDS style, rubber Nitrile sole, leather or leather/textile upper, brown upper, reinforced toe box, cleated, lacing fastening.

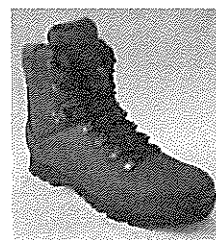
Size Range: 4

<u>NSN</u>	<u>SIZE</u>
8430-99-152-9979	6 Wide
8430-99-152-9990	12 Medium
8430-99-152-9993	13 Wide
8430-99-152-9997	15 Wide

Additional Information: This range has been superseded by 8430-99-936-3986 to 4010.

Section 2-5, DMC CD
FOOTWEAR

**BOOTS, COMBAT, PATROL,
Male, Brown, ITURRI**



NSN:	8430-99-936-3986	DMC:	CD
Specification:	DC/PS/6935	D of Q:	Pair
		PPQ:	001

Description: Boots, Combat, Patrol, Brown, Male. ITURRI.

Size Range: 22

<u>NSN</u>	<u>SIZE</u>
8430-99-936-3986	5 Medium
8430-99-936-3987	5 Large
8430-99-936-3988	6 Medium
8430-99-936-3989	6 Large
8430-99-936-3990	7 Medium
8430-99-936-3991	7 Large
8430-99-936-3992	8 Medium
8430-99-936-3993	8 Large
8430-99-936-3994	9 Medium
8430-99-936-3995	9 Large
8430-99-936-3996	10 Medium
8430-99-936-3997	10 Large
8430-99-936-3998	11 Medium
8430-99-936-3999	11 Large
8430-99-936-4000	12 Medium
8430-99-936-4001	12 Large
8430-99-936-4002	13 Medium
8430-99-936-4003	13 Large
8430-99-936-4004	14 Medium
8430-99-936-4005	14 Large
8430-99-936-4006	15 Medium
8430-99-936-4007	15 Large

Additional Information:

Section 2-5, DMC CD
FOOTWEAR

**BOOTS, COMBAT,
Patrol, Female, Black, YDS**



NSN:	8435-99-584-6695	DMC:	CD
Specification:	DC/PS/6633 YBKW	D of Q:	Pair
		PPQ:	001

Description: Boots Combat. Female, YDS style, rubber Nitrile sole, leather or leather/textile upper, black upper, reinforced toe box, cleated, lacing fastening.

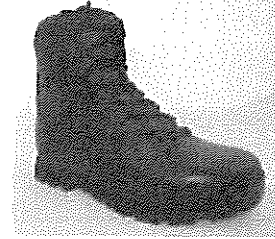
Size Range: 6

<u>NSN</u>	<u>SIZE</u>
8435-99-584-6695	3 Wide
8435-99-584-6701	6 Wide
8435-99-584-6703	7 Wide
8435-99-584-6705	8 Wide
8435-99-584-6706	9 Medium
8435-99-584-6707	9 Wide

Additional Information:

Section 2-5, DMC CD
FOOTWEAR

**BOOTS, COMBAT, PATROL,
Female, Black, ITURRI**



NSN: 8435-99-936-4044	DMC: CD
Specification: DC/PS/6935	D of Q: Pair
	PPQ: 001

Description: Boots, Combat, Patrol, Female, Black, ITURRI.

Size Range: 14

<u>NSN</u>	<u>SIZE</u>
8435-99-936-4044	3 Medium
8435-99-936-4045	3 Large
8435-99-936-4046	4 Medium
8435-99-936-4047	4 Large
8435-99-936-4048	5 Medium
8435-99-936-4049	5 Large
8435-99-936-4050	6 Medium
8435-99-936-4051	6 Large
8435-99-936-4052	7 Medium
8435-99-936-4053	7 Large
8435-99-936-4054	8 Medium
8435-99-936-4055	8 Large
8435-99-936-4056	9 Medium
8435-99-936-4057	9 Large

Additional Information:

Section 2-5, DMC CD
FOOTWEAR

**BOOTS, COMBAT,
Patrol, Female, Brown, ITURRI**



NSN:	8435-99-152-9933	DMC:	CD
Specification:	DC/PS/6633 IBRW	D of Q:	Pair
		PPQ:	001

Description: Boots Combat; Female. ITURRI style, Patrol, rubber Nitrile sole, leather or leather/textile upper, brown upper, reinforced toe box, cleated, lacing fastening.

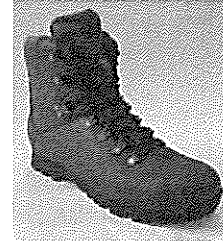
Size Range: 4

<u>NSN</u>	<u>SIZE</u>
8435-99-152-9933	5 Wide
8435-99-152-9937	7 Wide
8435-99-152-9938	8 Medium
8435-99-152-9940	9 Medium

Additional Information: This range has been superseded by 8435-99-936-4008 to 4021.

Section 2-5, DMC CD
FOOTWEAR

**BOOTS, COMBAT, PATROL,
Female, Brown, ITURRI**



NSN:	8435-99-936-4008	DMC:	CD
Specification:	DC/PS/6935	D of Q:	Pair
		PPQ:	001

Description: Boots, Combat. Patrol, Female, Brown. ITURRI

Size Range: 14

<u>NSN</u>	<u>SIZE</u>
8435-99-936-4008	3 Medium
8435-99-936-4009	3 Large
8435-99-936-4010	4 Medium
8435-99-936-4011	4 Large
8435-99-936-4012	5 Medium
8435-99-936-4013	5 Large
8435-99-936-4014	6 Medium
8435-99-936-4015	6 Large
8435-99-936-4016	7 Medium
8435-99-936-4017	7 Large
8435-99-936-4018	8 Medium
8435-99-936-4019	8 Large
8435-99-936-4020	9 Medium
8435-99-936-4021	9 Large

Additional Information:

Section 2-5, DMC CD
FOOTWEAR

**BOOTS,
Tent**

NSN:	8430-99-553-7592	DMC:	CD
Specification:	DC/CID/6808	D of Q:	Pair
		PPQ:	001

Description: Boots, Tent. Olive, Windproof outer material, quilted, thermally insulated, non-slip sole, draw cord at ankle height, elasticated top.

Range: 2

<u>NSN</u>	<u>SIZE</u>
8430-99-553-7592	36 - 40
8430-99-553-7593	40 - 46

Additional Information:

Section 2-5, DMC CD
FOOTWEAR

SPACERS, FOOTWEAR

**BOOTS, Cold Wet Weather,
SPACERS, MALE, ITURRI**

NSN: 8335-99-371-3196	DMC: CD
Specification: DC/PS/6934	D of Q: Pair
	PPQ: 001

Description: Boots, Cold Wet Weather, Spacers, Male, ITURRI

Size Range: 11

<u>NSN</u>	<u>SIZE</u>
8335-99-371-3196	5
8335-99-371-3197	6
8335-99-371-3198	7
8335-99-371-3199	8
8335-99-371-3200	9
8335-99-371-3201	10
8335-99-371-3202	11
8335-99-371-3203	12
8335-99-371-3204	13
8335-99-371-3205	14
8335-99-371-3206	15

Additional Information:

Section 2-5, DMC CD
FOOTWEAR

**BOOTS, PATROL
SPACERS, MALE, ITURRI**

NSN: 8335-99-936-4058	DMC: CD
Specification: DC/PS/6935	D of Q: Pair
	PPQ: 001

Description: Boots, Patrol, Spacers, Male, ITURRI

Size Range: 11

<u>NSN</u>	<u>SIZE</u>
8335-99-936-4058	5
8335-99-936-4059	6
8335-99-936-4060	7
8335-99-936-4061	8
8335-99-936-4062	9
8335-99-936-4063	10
8335-99-936-4064	11
8335-99-936-4065	12
8335-99-936-4066	13
8335-99-936-4067	14
8335-99-936-4068	15

Additional Information:

Section 2-5, DMC CD
FOOTWEAR

**BOOTS, COMBAT,
High Liability,
SPACERS,
MALE, ITURRI-ALTBERG**

NSN: 8335-99-233-1536	DMC: CD
Specification: DC/PS/6937	D of Q: Pair
	PPQ: 001

Description: Boots, Combat, High Liability, Spacers, Male, ITURRI-ALTBERG

Size Range: 11

<u>NSN</u>	<u>SIZE</u>
8335-99-233-1536	5
8335-99-233-1537	6
8335-99-233-1538	7
8335-99-233-1539	8
8335-99-233-1540	9
8335-99-233-1541	10
8335-99-233-1542	11
8335-99-233-1543	12
8335-99-233-1544	13
8335-99-233-1545	14
8335-99-233-1546	15

Additional Information:

Section 2-5, DMC CD
FOOTWEAR

**BOOTS, COMBAT,
High Liability,
SPACERS,
MALE, AKU**

NSN: 8335-99-297-9906	DMC: CD
Specification: DC/PS/6937	D of Q: Pair
	PPQ: 001

Description: Boots, Combat, High Liability, Spacers, Male, AKU.

Size Range: 11

<u>NSN</u>	<u>SIZE</u>
8335-99-297-9906	5
8335-99-297-9907	6
8335-99-297-9908	7
8335-99-297-9909	8
8335-99-297-9910	9
8335-99-297-9911	10
8335-99-297-9912	11
8335-99-297-9913	12
8335-99-297-9914	13
8335-99-297-9915	14
8335-99-297-9916	15

Additional Information:

Section 2-5, DMC CD
FOOTWEAR

**BOOTS, COMBAT, High Liability,
SPACERS,
FEMALE, ITURRI-ALTBURG**

NSN: 8335-99-233-1547	DMC: CD
Specification: DC/PS/6937	D of Q: Pair
	PPQ: 001

Description: Boots, Combat, High Liability, Spacers, Female, ITURRI-ALTBURG

Size Range: 7	
<u>NSN</u>	<u>SIZE</u>
8335-99-233-1547	3
8335-99-233-1548	4
8335-99-233-1549	5
8335-99-233-1550	6
8335-99-233-1551	7
8335-99-233-1552	8
8335-99-233-1553	9

Additional Information:

Section 2-5, DMC CD
FOOTWEAR

**BOOTS, COMBAT, High Liability,
SPACERS,
FEMALE, AKU**

NSN: 8335-99-297-9917	DMC: CD
Specification: DC/PS/6937	D of Q: Pair
	PPQ: 001

Description: Boots, Combat, High Liability, Spacers, Female, AKU.

Size Range: 7	
<u>NSN</u>	<u>SIZE</u>
8335-99-297-9917	3
8335-99-297-9918	4
8335-99-297-9919	5
8335-99-297-9920	6
8335-99-297-9921	7
8335-99-297-9922	8
8335-99-297-9923	9

Additional Information:

Section 2-5, DMC CD
FOOTWEAR

**BOOTS, Cold Wet Weather,
SPACERS, FEMALE, ITURRI**

NSN: 8335-99-371-3207

DMC: CD

Specification: DC/PS/6934

D of Q: Pair

PPQ: 001

Description: Boots, Cold Wet Weather, Spacers, Female, ITURRI.

Size Range: 7

<u>NSN</u>	<u>SIZE</u>
8335-99-371-3207	3
8335-99-371-3208	4
8335-99-371-3209	5
8335-99-371-3210	6
8335-99-371-3211	7
8335-99-371-3212	8
8335-99-371-3213	9

Additional Information:

Section 2-5, DMC CD
FOOTWEAR

**BOOTS, PATROL,
SPACERS, FEMALE, ITURRI**

NSN:	8335-99-936-4069	DMC:	CD
Specification:	DC/PS/6935	D of Q:	Pair
		PPQ:	001

Description: Boots, Patrol, Spacers, Female, ITURRI.

Size Range: 7

<u>NSN</u>	<u>SIZE</u>
8335-99-936-4069	3
8335-99-936-4070	4
8335-99-936-4071	5
8335-99-936-4072	6
8335-99-936-4073	7
8335-99-936-4074	8
8335-99-936-4075	9

Additional Information:

Section 2-5, DMC CD
FOOTWEAR

**BOOTS, DESERT, COMBAT,
High Liability,
SPACERS,
MALE, ITURRI**

NSN: 8335-99-167-5968	DMC: CD
Specification: DC/PS/6936	D of Q: Pair
	PPQ: 001

Description: Boots, Desert, Combat, High Liability, Spacers, Male, ITURRI.

Size Range: 11

<u>NSN</u>	<u>SIZE</u>
8335-99-167-5968	5
8335-99-167-5969	6
8335-99-167-5970	7
8335-99-167-5971	8
8335-99-167-5972	9
8335-99-167-5973	10
8335-99-167-5974	11
8335-99-167-5975	12
8335-99-167-5976	13
8335-99-167-5977	14
8335-99-167-5978	15

Additional Information:

Section 2-5, DMC CD
FOOTWEAR

**BOOTS, DESERT, COMBAT,
High Liability,
SPACERS,
MALE, HAIX**

NSN: 8335-99-217-0364	DMC: CD
Specification: DC/PS/6936	D of Q: Pair
	PPQ: 001

Description: Boots, Desert, Combat, High Liability, Spacers, Male, HAIX.

Size Range: 11

<u>NSN</u>	<u>SIZE</u>
8335-99-217-0364	5
8335-99-217-0365	6
8335-99-217-0366	7
8335-99-217-0367	8
8335-99-217-0368	9
8335-99-217-0369	10
8335-99-217-0370	11
8335-99-217-0371	12
8335-99-217-0372	13
8335-99-217-0373	14
8335-99-217-0374	15

Additional Information:

Section 2-5, DMC CD
FOOTWEAR

**BOOTS, DESERT, COMBAT,
High Liability,
SPACERS,
FEMALE, ITURRI**

NSN: 8335-99-167-5979	DMC: CD
Specification: DC/PS/6936	D of Q: Pair
	PPQ: 001

Description: Boots, Desert, Combat, High Liability, Spacers, Female, ITURRI.

Size Range: 7

<u>NSN</u>	<u>SIZE</u>
8335-99-167-5979	3
8335-99-167-5980	4
8335-99-167-5981	5
8335-99-167-5982	6
8335-99-167-5983	7
8335-99-167-5984	8
8335-99-167-5985	9

Additional Information:

Section 2-5, DMC CD
FOOTWEAR

**BOOTS, DESERT, COMBAT,
High Liability,
SPACERS,
FEMALE, HAIX**

NSN: 8335-99-217-0375	DMC: CD
Specification: DC/PS/6936	D of Q: Pair
	PPQ: 001

Description: Boots, Desert, Combat, High Liability, Spacers, Female, HAIX.

Size Range: 7

<u>NSN</u>	<u>SIZE</u>
8335-99-217-0375	3
8335-99-217-0376	4
8335-99-217-0377	5
8335-99-217-0378	6
8335-99-217-0379	7
8335-99-217-0380	8
8335-99-217-0381	9

Additional Information:

Section 2-5, DMC CD
FOOTWEAR

BARRACK AND PARADE FOOTWEAR

**BOOTS, ANKLE,
General Service, Ammunition Boots,**



NSN: 8430-99-125-8833	DMC: CD
Specification: UK/SC/5657 @ 29207 & 29208	D of Q: Pair
	PPQ: 001

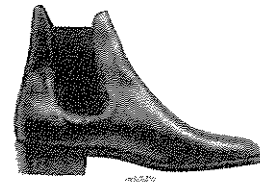
Description: Boots, Ankle, General Service (Ammunition). Leather. Goodyear welted construction.

Range: 26	
<u>NSN</u>	<u>SIZE</u>
8430-99-125-8833	3 Medium
8430-99-125-8834	3 Large
8430-99-125-8835	4 Medium
8430-99-125-8836	4 Large
8430-99-125-8837	5 Medium
8430-99-125-8838	5 Large
8430-99-125-8839	6 Medium
8430-99-125-8840	6 Large
8430-99-125-8841	7 Medium
8430-99-125-8842	7 Large
8430-99-125-8843	8 Medium
8430-99-125-8844	8 Large
8430-99-125-8845	9 Medium
8430-99-125-8846	9 Large
8430-99-125-8847	10 Medium
8430-99-125-8848	10 Large
8430-99-125-8849	11 Medium
8430-99-125-8850	11 Large
8430-99-125-8851	12 Medium
8430-99-125-8852	12 Large
8430-99-125-8853	13 Medium
8430-99-125-8854	13 Large
8430-99-125-8855	14 Medium
8430-99-125-8856	14 Large
8430-99-125-8857	15 Medium
8430-99-125-8858	15 Large

Additional Information: Tri-service, for Ceremonial and Parade use.

Section 2-5, DMC CD
FOOTWEAR

**BOOTS, CHELSEA,
with Spur Housing**



NSN:	8430-99-421-9429	DMC:	CD
Specification:	UK/SC/5677 @ 29250B	D of Q:	Pair
		PPQ:	001

Description: Boots, Chelsea. Household Cavalry. Leather. With spur housing.

Range: 22

<u>NSN</u>	<u>SIZE</u>
8430-99-421-9429	4 Medium
8430-99-421-9430	4 Large
8430-99-421-9431	5 Medium
8430-99-421-9432	5 Large
8430-99-323-9958	6 Medium
8430-99-323-9959	6 Large
8430-99-323-9960	7 Medium
8430-99-323-9961	7 Large
8430-99-323-9962	8 Medium
8430-99-323-9963	8 Large
8430-99-323-9964	9 Medium
8430-99-323-9965	9 Large
8430-99-323-9966	10 Medium
8430-99-323-9967	10 Large
8430-99-323-9968	11 Medium
8430-99-323-9969	11 Large
8430-99-323-9970	12 Medium
8430-99-323-9971	12 Large
8430-99-323-9972	13 Medium
8430-99-323-9973	13 Large
8430-99-323-9974	14 Medium
8430-99-323-9975	14 Large

Additional Information: To be worn when dismounted.

Section 2-5, DMC CD
FOOTWEAR

**BOOTS,
George with Spur Housing**



NSN:	8430-99-132-6625	DMC:	CD
Specification:	UK/SC/5419 @ 22413	D of Q:	Pair
		PPQ:	001

Description: Boots, George. Black. Leather upper, sole and heel (cuban), with spur housing.

Range: 33

<u>NSN</u>	<u>SIZE</u>
8430-99-132-6625	5 Small
8430-99-132-6626	5 Medium
8430-99-132-6627	5 Large
8430-99-132-6628	6 Small
8430-99-132-6629	6 Medium
8430-99-132-6630	6 Large
8430-99-132-6631	7 Small
8430-99-132-6632	7 Medium
8430-99-132-6633	7 Large
8430-99-132-6634	8 Small
8430-99-132-6635	8 Medium
8430-99-132-6636	8 Large
8430-99-132-6637	9 Small
8430-99-132-6638	9 Medium
8430-99-132-6639	9 Large
8430-99-132-6640	10 Small
8430-99-132-6641	10 Medium
8430-99-132-6642	10 Large
8430-99-132-6643	11 Small
8430-99-132-6644	11 Medium
8430-99-132-6645	11 Large
8430-99-132-6646	12 Small
8430-99-132-6647	12 Medium
8430-99-132-6648	12 Large
8430-99-899-8001	13 Small
8430-99-899-8002	13 Medium
8430-99-899-8003	13 Large

Section 2-5, DMC CD
FOOTWEAR

**BOOTS,
George With Spur Housing continued**



NSN:	DMC: CD
Specification: UK/SC/5419 @ 22413	D of Q: Pair
	PPQ: 001

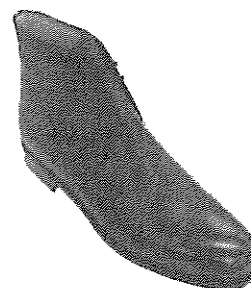
Description: Boots, George. Black. Leather upper, sole and heel (cuban), with spur housing.

Range: 33	
<u>NSN</u>	<u>SIZE</u>
8430-99-899-8004	14 Small
8430-99-899-8005	14 Medium
8430-99-899-8006	14 Large
8430-99-899-8007	15 Small
8430-99-899-8008	15 Medium
8430-99-899-8009	15 Large

Additional Information:

Section 2-5, DMC CD
FOOTWEAR

**BOOTS,
George Without Spur Housing**



NSN:	8430-99-975-2632	DMC:	CD
Specification:	UK/SC/5419 @ 15040	D of Q:	Pair
		PPQ:	001

Description: Boots, George. Black. Leather upper and sole and heel. Without spur housing.

Range: 33

<u>NSN</u>	<u>SIZE</u>
8430-99-975-2632	5 Small
8430-99-975-2633	5 Medium
8430-99-975-2634	5 Large
8430-99-975-2635	6 Small
8430-99-975-2636	6 Medium
8430-99-975-2637	6 Large
8430-99-975-2638	7 Small
8430-99-975-2639	7 Medium
8430-99-975-2640	7 Large
8430-99-975-2641	8 Small
8430-99-975-2642	8 Medium
8430-99-975-2643	8 Large
8430-99-975-2644	9 Small
8430-99-975-2645	9 Medium
8430-99-975-2646	9 Large
8430-99-975-2647	10 Small
8430-99-975-2648	10 Medium
8430-99-975-2649	10 Large
8430-99-975-2650	11 Small
8430-99-975-2651	11 Medium
8430-99-975-2652	11 Large
8430-99-975-2653	12 Small
8430-99-975-2654	12 Medium
8430-99-975-2655	12 Large
8430-99-975-2656	13 Small
8430-99-975-3600	13 Medium
8430-99-975-3601	13 Large

Section 2-5, DMC CD
FOOTWEAR

**BOOTS,
George Without Spur Housing continued**



NSN:	DMC: CD
Specification: UK/SC/5419 @ 15040	D of Q: Pair
	PPQ: 001

Description: Boots, George. Black. Leather upper and sole and heel. Without spur housing.

Range: 33

<u>NSN</u>	<u>SIZE</u>
8430-99-975-3602	14 Small
8430-99-975-3603	14 Medium
8430-99-975-3604	14 Large
8430-99-899-7998	15 Small
8430-99-899-7999	15 Medium
8430-99-899-8000	15 Large

Additional Information:

Section 2-5, DMC CD
FOOTWEAR

SHOES, SERVICE, Male, Highland, BLACK,



NSN:	8430-99-975-3076	DMC:	CD
Specification:	UK/SC/1955 @ 28123	D of Q:	Pair
		PPQ:	001

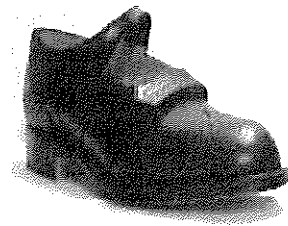
Description: Shoes, Service Male. Black. Highland type, cattle hide leather uppers and sole. Winged capped toe. Synthetic rubber heel. Laces at instep.

Size Range: 29

<u>NSN</u>	<u>SIZE</u>
8430-99-975-3076	4 Small
8430-99-975-3077	4 Medium
8430-99-975-3078	4 Large
8430-99-975-3079	5 Small
8430-99-975-3080	5 Medium
8430-99-975-3081	5 Large
8430-99-975-3082	6 Small
8430-99-975-3083	6 Medium
8430-99-975-3084	6 Large
8430-99-975-3085	7 Small
8430-99-975-3086	7 Medium
8430-99-975-3087	7 Large
8430-99-975-3088	8 Small
8430-99-975-3089	8 Medium
8430-99-975-3090	8 Large
8430-99-975-3091	9 Small
8430-99-975-3092	9 Medium
8430-99-975-3093	9 Large
8430-99-975-3094	10 Small
8430-99-975-3095	10 Medium
8430-99-975-3096	10 Large
8430-99-975-3097	11 Small
8430-99-975-3098	11 Medium
8430-99-975-3099	11 Large
8430-99-975-3100	12 Small
8430-99-975-3101	12 Medium
8430-99-975-3102	12 Large
8430-99-866-9630	13 Medium
8430-99-866-9631	13 Large

Section 2-5, DMC CD
FOOTWEAR

**SHOES, SERVICE, Piper's,
Male, Black Brogue,**



NSN:	8430-99-975-3123	DMC:	CD
Specification:	UK/SC/5932 @ 15233A	D of Q:	Pair
		PPQ:	001

Description: Shoes, Service. Pipers, Brogue. Black leather upper, sole and heel. Rubber quarter tip joint. Instep buckle straps.

Size Range: 18

<u>NSN</u>	<u>SIZE</u>
8430-99-975-3123	5 Medium
8430-99-975-3124	5 Large
8430-99-975-3126	6 Medium
8430-99-975-3127	6 Large
8430-99-975-3129	7 Medium
8430-99-975-3130	7 Large
8430-99-975-3132	8 Medium
8430-99-975-3133	8 Large
8430-99-975-3134	9 Small
8430-99-975-3135	9 Medium
8430-99-975-3136	9 Large
8430-99-975-3137	10 Small
8430-99-975-3138	10 Medium
8430-99-975-3139	10 Large
8430-99-975-3141	11 Medium
8430-99-975-3142	11 Large
8430-99-975-3144	12 Medium
8430-99-975-3145	12 Large

Additional Information: For use by Piper's only.

Section 2-5, DMC CD
FOOTWEAR

SHOES, SERVICE, Patent, Male, Black	
NSN: 8430-99-130-9646	DMC: CD
Specification: UK/SC/5747 @ 29489	D of Q: Pair
	PPQ: 001



Description: Shoes, Service. Patent, Black leather uppers. Male. Oxford. Plain toe. Leather sole and heel. Laces at instep.

Size Range: 11	
<u>NSN</u>	<u>SIZE</u>
8430-99-130-9646	5
8430-99-130-9647	6
8430-99-130-9648	7
8430-99-130-9649	8
8430-99-130-9650	9
8430-99-130-9651	10
8430-99-130-9652	11
8430-99-130-9653	12
8430-99-130-9654	13
8430-99-352-4261	14
8430-99-352-4262	15

Additional Information: Uniform, Officers No.5 dress.

Section 2-5, DMC CD
FOOTWEAR

**SHOES, SERVICE, RN Officers,
Black, Oxford Style, Without Toe Cap**



NSN:	8430-99-978-4525	DMC:	CD
Specification:	UK/SC/5855 @ D00097	D of Q:	Pair
		PPQ:	001

Description: Shoes, Service. RN Officers, Male, Oxford. Black leather calfskin uppers. Plain Toe. Leather cattle hide sole and heel. Laces at Instep.

Size Range: 22

<u>NSN</u>	<u>SIZE</u>
8430-99-978-4525	5 Medium
8430-99-978-4526	5 Large
8430-99-978-4529	6 Medium
8430-99-978-4530	6 Large
8430-99-978-4533	7 Medium
8430-99-978-4534	7 Large
8430-99-978-4537	8 Medium
8430-99-978-4538	8 Large
8430-99-978-4541	9 Medium
8430-99-978-4542	9 Large
8430-99-978-4545	10 Medium
8430-99-978-4546	10 Large
8430-99-978-4549	11 Medium
8430-99-978-4550	11 Large
8430-99-978-4553	12 Medium
8430-99-978-4554	12 Large
8430-99-731-0084	13 Medium
8430-99-731-0085	13 Large
8430-99-731-0088	14 Medium
8430-99-731-0089	14 Large
8430-99-731-0092	15 Medium
8430-99-731-0093	15 Large

Additional Information: For RN Officers.

Section 2-5, DMC CD
FOOTWEAR

**SHOES, SERVICE, RAF Officers,
With Toe Cap, Black, Oxford Style,**



NSN:	8430-99-975-2908	DMC:	CD
Specification:	UK/SC/5855 @ D00096	D of Q:	Pair
		PPQ:	001

Description: Shoes, Service. Male. Oxford. Black leather cattle hide upper. Capped toe. Leather sole and heel. Laces at instep. RAF Officers.

Size Range: 22	
<u>NSN</u>	<u>SIZE</u>
8430-99-975-2908	5 Medium
8430-99-975-2909	5 Large
8430-99-975-2911	6 Medium
8430-99-975-2912	6 Large
8430-99-975-2914	7 Medium
8430-99-975-2915	7 Large
8430-99-975-2917	8 Medium
8430-99-975-2918	8 Large
8430-99-975-2920	9 Medium
8430-99-975-2921	9 Large
8430-99-975-2923	10 Medium
8430-99-975-2924	10 Large
8430-99-975-2926	11 Medium
8430-99-975-2927	11 Large
8430-99-975-2929	12 Medium
8430-99-975-2930	12 Large
8430-99-975-2932	13 Medium
8430-99-975-2933	13 Large
8430-99-241-5893	14 Medium
8430-99-241-5894	14 Large
8430-99-241-5896	15 Medium
8430-99-241-5897	15 Large

Additional Information: For Royal Air Force and Royal Marines Officers and Supervisory ranks of MoD Police and Fire Brigade.

Section 2-5, DMC CD
FOOTWEAR

SHOES, SERVICE, Working, Without Toe Cap, Male, Black



NSN:	8430-99-297-6231	DMC:	CD
Specification:	UK/SC/5735 @ 29464	D of Q:	Pair
		PPQ:	001

Description: Shoes, Service, Working, Without toecap. Male. Black leather, Non-slip, work wear.

Size Range: 42

<u>NSN</u>	<u>SIZE</u>
8430-99-297-6231	5 Medium
8430-99-297-6232	5 Large
8430-99-297-6233	5½ Medium
8430-99-297-6234	5½ Large
8430-99-297-6235	6 Medium
8430-99-297-6236	6 Large
8430-99-297-6237	6½ Medium
8430-99-297-6238	6½ Large
8430-99-297-6239	7 Medium
8430-99-297-6240	7 Large
8430-99-297-6241	7½ Medium
8430-99-297-6242	7½ Large
8430-99-297-6243	8 Medium
8430-99-297-6244	8 Large
8430-99-297-6245	8½ Medium
8430-99-297-6246	8½ Large
8430-99-297-6247	9 Medium
8430-99-297-6248	9 Large
8430-99-297-6249	9½ Medium
8430-99-297-6250	9½ Large
8430-99-297-6251	10 Medium
8430-99-297-6252	10 Large
8430-99-297-6253	10½ Medium
8430-99-297-6254	10½ Large
8430-99-297-6255	11 Medium
8430-99-297-6256	11 Large
8430-99-297-6257	11½ Medium
8430-99-297-6258	11½ Large

Section 2-5, DMC CD
FOOTWEAR

SHOES, SERVICE, Working, Without Toe Cap, Male, Black, continued



NSN:	DMC: CD
Specification: UK/SC/5735 @ 29464	D of Q: Pair
	PPQ: 001

Description: Shoes, Service, Working, Without toecap. Male. Black leather, Non-slip, work wear.

Size Range: 42

<u>NSN</u>	<u>SIZE</u>
8430-99-297-6259	12 Medium
8430-99-297-6260	12 Large
8430-99-297-6261	12½ Medium
8430-99-297-6262	12½ Large
8430-99-297-6263	13 Medium
8430-99-297-6264	13 Large
8430-99-297-6265	13½ Medium
8430-99-297-6266	13½ Large
8430-99-297-6267	14 Medium
8430-99-297-6268	14 Large
8430-99-297-6269	14½ Medium
8430-99-297-6270	14½ Large
8430-99-297-6271	15 Medium
8430-99-297-6272	15 Large

Additional Information: These items supersede range 8430-99-869-4408 to 8430-99-869-4433.

Section 2-5, DMC CD
FOOTWEAR

SHOES, SERVICE, Working, With Toe Cap, Male, Black.



NSN:	8430-99-297-6275	DMC:	CD
Specification:	UK/SC/5735 29465	D of Q:	Pair
		PPQ:	001

Description: Shoes, Service. Working, with toe-cap, Male. Black leather.

Size Range: 42

<u>NSN</u>	<u>SIZE</u>	
8430-99-297-6275	5	Medium
8430-99-297-6276	5	Large
8430-99-297-6277	5½	Medium
8430-99-297-6278	5½	Large
8430-99-297-6279	6	Medium
8430-99-297-6280	6	Large
8430-99-297-6281	6½	Medium
8430-99-297-6282	6½	Large
8430-99-297-6283	7	Medium
8430-99-297-6284	7	Large
8430-99-297-6285	7½	Medium
8430-99-297-6286	7½	Large
8430-99-297-6287	8	Medium
8430-99-297-6288	8	Large
8430-99-297-6289	8½	Medium
8430-99-297-6290	8½	Large
8430-99-297-6291	9	Medium
8430-99-297-6292	9	Large
8430-99-297-6293	9½	Medium
8430-99-297-6294	9½	Large
8430-99-297-6295	10	Medium
8430-99-297-6296	10	Large
8430-99-297-6297	10½	Medium
8430-99-297-6298	10½	Large
8430-99-297-6299	11	Medium
8430-99-297-6300	11	Large
8430-99-297-6301	11½	Medium
8430-99-297-6302	11½	Large

Section 2-5, DMC CD
FOOTWEAR

**SHOES, SERVICE, Working, With Toe Cap,
Male, Black continued**



NSN:	DMC: CD
Specification: UK/SC/5735 29465	D of Q: Pair
	PPQ: 001

Description: Shoes, Service. Working, with toe-cap, Male. Black leather.

Size Range: 42

NSN		SIZE
8430-99-297-6303	12	Medium
8430-99-297-6304	12	Large
8430-99-297-6305	12½	Medium
8430-99-297-6306	12½	Large
8430-99-297-6307	13	Medium
8430-99-297-6308	13	Large
8430-99-297-6309	13½	Medium
8430-99-297-6310	13½	Large
8430-99-297-6311	14	Medium
8430-99-297-6312	14	Large
8430-99-297-6313	14½	Medium
8430-99-297-6314	14½	Large
8430-99-297-6315	15	Medium
8430-99-297-6316	15	Large

Additional Information:

Section 2-5, DMC CD
FOOTWEAR

**SHOES, SERVICE, Army Officers,
Brown, Oxford Style, With Toe Cap**



NSN:	8430-99-975-2936	DMC:	CD
Specification:	UK/SC/5855 @ D00098	D of Q:	Pair
		PPQ:	001

Description: Shoes, Service. Army Officers. Male. Oxford. Brown leather cattle hide upper. Capped toe. Leather sole and heel. Laces at instep.

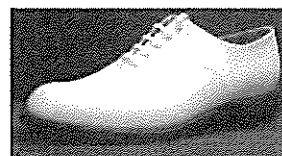
Size Range: 22

<u>NSN</u>	<u>SIZE</u>
8430-99-975-2936	5 Medium
8430-99-975-2937	5 Large
8430-99-975-2939	6 Medium
8430-99-975-2940	6 Large
8430-99-975-2942	7 Medium
8430-99-975-2943	7 Large
8430-99-975-2945	8 Medium
8430-99-975-2946	8 Large
8430-99-975-2948	9 Medium
8430-99-975-2949	9 Large
8430-99-975-2951	10 Medium
8430-99-975-2952	10 Large
8430-99-975-2954	11 Medium
8430-99-975-2955	11 Large
8430-99-975-2957	12 Medium
8430-99-975-2958	12 Large
8430-99-975-2960	13 Medium
8430-99-975-2961	13 Large
8430-99-400-9034	14 Medium
8430-99-400-9035	14 Large
8430-99-400-9037	15 Medium
8430-99-400-9038	15 Large

Additional Information: For Army Officer and Officer Cadet.

Section 2-5, DMC CD
FOOTWEAR

**SHOES, SERVICE,
White, Tropical, RN, Male**



NSN:	8430-99-297-6399	DMC:	CD
Specification:	UK/SC/5736 @ 29467A	D of Q:	Pair
		PPQ:	001

Description: Shoes, Service. White, leather. Tropical, RN, Male.

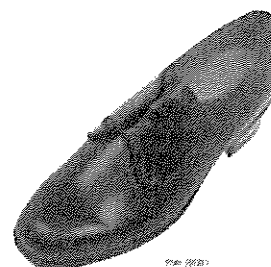
Size Range: 22

<u>NSN</u>	<u>SIZE</u>
8430-99-297-6399	5 Medium
8430-99-297-6400	5 Large
8430-99-297-6401	6 Medium
8430-99-297-6402	6 Large
8430-99-297-6403	7 Medium
8430-99-297-6404	7 Large
8430-99-297-6405	8 Medium
8430-99-297-6406	8 Large
8430-99-297-6407	9 Medium
8430-99-297-6408	9 Large
8430-99-297-6409	10 Medium
8430-99-297-6410	10 Large
8430-99-297-6411	11 Medium
8430-99-297-6412	11 Large
8430-99-297-6413	12 Medium
8430-99-297-6414	12 Large
8430-99-297-6415	13 Medium
8430-99-297-6416	13 Large
8430-99-297-6417	14 Medium
8430-99-297-6418	14 Large
8430-99-297-6419	15 Medium
8430-99-297-6420	15 Large

Additional Information: This range supersedes 8430-99-137-9193/9208 and 8430-99-132-4032/4061.

Section 2-5, DMC CD
FOOTWEAR

**SHOES, SERVICE, Female,
Black, Gibson Style, Without Toe Cap**



NSN:	8435-99-977-2102	DMC:	CD
Specification:	UK/SC/4984 @ 28383	D of Q:	Pair
		PPQ:	001

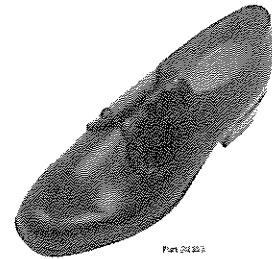
Description: Shoes, Service. Female, Gibson. Black leather cattle hide uppers, plain toe. Leather cattle hide sole. Synthetic rubber heel. Laces at instep.

Size Range: 42

<u>NSN</u>	<u>SIZE</u>
8435-99-977-2102	2 Small
8435-99-977-2103	2 Medium
8435-99-977-2104	2 Large
8435-99-977-2105	2½ Small
8435-99-977-2106	2½ Medium
8435-99-977-2107	2½ Large
8435-99-977-2108	3 Small
8435-99-977-2109	3 Medium
8435-99-977-2110	3 Large
8435-99-977-2111	3½ Small
8435-99-977-2112	3½ Medium
8435-99-977-2113	3½ Large
8435-99-977-2114	4 Small
8435-99-977-2115	4 Medium
8435-99-977-2116	4 Large
8435-99-977-2117	4½ Small
8435-99-977-2118	4½ Medium
8435-99-977-2119	4½ Large
8435-99-977-2120	5 Small
8435-99-977-2121	5 Medium
8435-99-977-2122	5 Large
8435-99-977-2123	5½ Small
8435-99-977-2124	5½ Medium
8435-99-977-2125	5½ Large
8435-99-977-2126	6 Small
8435-99-977-2127	6 Medium
8435-99-977-2128	6 Large

Section 2-5, DMC CD
FOOTWEAR

**SHOES, SERVICE, Female,
Black, Gibson Style, Without Toe Cap
continued**



NSN:	DMC: CD
Specification: UK/SC/4984 @ 28383	D of Q: Pair
	PPQ: 001

Description: Shoes, Service. Female, Gibson. Black leather cattle hide uppers, plain toe. Leather cattle hide sole. Synthetic rubber heel. Laces at instep.

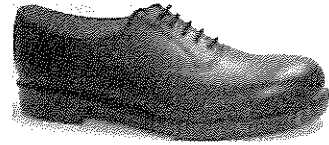
Size Range: 42

<u>NSN</u>	<u>SIZE</u>
8435-99-977-2129	6½ Small
8435-99-977-2130	6½ Medium
8435-99-977-2131	6½ Large
8435-99-977-2132	7 Small
8435-99-977-2133	7 Medium
8435-99-977-2134	7 Large
8435-99-977-2135	7½ Small
8435-99-977-2136	7½ Medium
8435-99-977-2137	7½ Large
8435-99-977-2138	8 Small
8435-99-977-2139	8 Medium
8435-99-977-2140	8 Large
8435-99-977-2141	8½ Small
8435-99-977-2142	8½ Medium
8435-99-977-2143	8½ Large

Additional Information:

Section 2-5, DMC CD
FOOTWEAR

**SHOES, SERVICE, Working,
Without Toe Cap, Female,
Black**



NSN:	8435-99-297-6319	DMC:	CD
Specification:	UK/SC/5735 @ 29468	D of Q:	Pair
		PPQ:	001

Description: Shoes, Service. Working, Without toecap, Female, Non-Slip, Black leather, Gibson style.

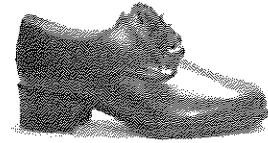
Size Range: 30

<u>NSN</u>	<u>SIZE</u>
8435-99-297-6319	2 Medium
8435-99-297-6320	2 Large
8435-99-297-6321	2½ Medium
8435-99-297-6322	2½ Large
8435-99-297-6323	3 Medium
8435-99-297-6324	3 Large
8435-99-297-6325	3½ Medium
8435-99-297-6326	3½ Large
8435-99-297-6327	4 Medium
8435-99-297-6328	4 Large
8435-99-297-6329	4½ Medium
8435-99-297-6330	4½ Large
8435-99-297-6331	5 Medium
8435-99-297-6332	5 Large
8435-99-297-6333	5½ Medium
8435-99-297-6334	5½ Large
8435-99-297-6335	6 Medium
8435-99-297-6336	6 Large
8435-99-297-6337	6½ Medium
8435-99-297-6338	6½ Large
8435-99-297-6339	7 Medium
8435-99-297-6340	7 Large
8435-99-297-6341	7½ Medium
8435-99-297-6342	7½ Large
8435-99-297-6343	8 Medium
8435-99-297-6344	8 Large
8435-99-297-6345	8½ Medium
8435-99-297-6346	8½ Large
8435-99-297-6347	9 Medium
8435-99-297-6348	9 Large

Additional Information: This range supersedes 8435-99-869-4386 / 4404.

Section 2-5, DMC CD
FOOTWEAR

**SHOES, SERVICE, Female
Brown. Gibson Style**



NSN:	8435-99-978-7345	DMC:	CD
Specification:	UK/SC/4984 @ 24243	D of Q:	Pair
		PPQ:	001

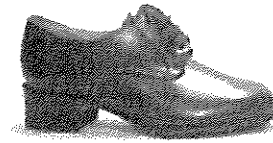
Description: Shoes, Service. Female. Brown Gibson. Leather uppers and sole with stuck on rubber half sole. Rubber heel. Laces at instep.

Range: 42

<u>NSN</u>	<u>SIZE</u>
8435-99-978-7345	2 Small
8435-99-978-7346	2 Medium
8435-99-978-7347	2 Large
8435-99-978-7348	2½ Small
8435-99-978-7349	2½ Medium
8435-99-978-7350	2½ Large
8435-99-978-7351	3 Small
8435-99-978-7352	3 Medium
8435-99-978-7353	3 Large
8435-99-978-7354	3½ Small
8435-99-978-7355	3½ Medium
8435-99-978-7356	3½ Large
8435-99-978-7357	4 Small
8435-99-978-7358	4 Medium
8435-99-978-7359	4 Large
8435-99-978-7360	4½ Small
8435-99-978-7361	4½ Medium
8435-99-978-7362	4½ Large
8435-99-978-7363	5 Small
8435-99-978-7364	5 Medium
8435-99-978-7365	5 Large
8435-99-978-7366	5½ Small
8435-99-978-7367	5½ Medium
8435-99-978-7368	5½ Large

Section 2-5, DMC CD
FOOTWEAR

**SHOES, SERVICE, Female,
Brown, Gibson Style continued**



NSN:	DMC: CD
Specification: UK/SC/4984 @ 24243	D of Q: Pair
	PPQ: 001

Description: Shoes, Service. Female. Brown Gibson. Leather uppers and sole with stuck on rubber half sole. Rubber heel. Laces at instep.

Range: 42

<u>NSN</u>	<u>SIZE</u>
8435-99-978-7369	6 Small
8435-99-978-7370	6 Medium
8435-99-978-7371	6 Large
8435-99-978-7372	6½ Small
8435-99-978-7373	6½ Medium
8435-99-978-7374	6½ Large
8435-99-978-7375	7 Small
8435-99-978-7376	7 Medium
8435-99-978-7377	7 Large
8435-99-978-7378	7½ Small
8435-99-978-7379	7½ Medium
8435-99-978-7380	7½ Large
8435-99-978-7381	8 Small
8435-99-978-7382	8 Medium
8435-99-978-7383	8 Large
8435-99-978-7384	8½ Small
8435-99-978-7385	8½ Medium
8435-99-978-7386	8½ Large

Additional Information: For WRAC Officers

Section 2-5, DMC CD
FOOTWEAR

SHOES, Female, Court, Black, RAF Personnel	
NSN: 8435-99-870-1321	DMC: CD
Specification: DC/CID/6137	D of Q: Pair
PPQ: 001	

Description: Shoes, Female, Court Black, all leather uppers with 'V' throat. Rubber sole with 50mm high heel. For use by RAF Female Personnel.

Size Range: 25		
<u>NSN</u>	<u>SIZE</u>	<u>FIT</u>
8435-99-870-1321	3	C
8435-99-870-1322	3	D
8435-99-870-1323	3½	C
8435-99-870-1324	3½	D
8435-99-870-1325	4	C
8435-99-870-1326	4	D
8435-99-870-1327	4½	C
8435-99-870-1328	4½	D
8435-99-870-1329	5	C
8435-99-870-1330	5	D
8435-99-870-1331	5½	C
8435-99-870-1332	6	D
8435-99-870-1333	6	C
8435-99-870-1334	6	D
8435-99-870-1335	6½	C
8435-99-870-1336	6½	D
8435-99-870-1337	7	C
8435-99-870-1338	7	D
8435-99-870-1339	7½	D
8435-99-870-1340	7½	B
8435-99-870-1341	8	C
8435-99-870-1342	8	D
8435-99-870-1343	8½	C
8435-99-870-1344	8½	D
8435-99-870-1345	9	C
8435-99-870-1346	9	D
Additional Information:		

Section 2-5, DMC CD
FOOTWEAR

**SHOES, NURSES, WARD,
Gibson Style, Black, Tri-Service**

NSN: 8430-99-323-6747	DMC: CD
Specification: DC/CID/6089	D of Q: Pair
	PPQ: 001

Description: Shoes, Nurses, Ward. Gibson style. Colour black. Leather uppers with laced front. PVC welded sole. For use by tri-service nursing personnel.

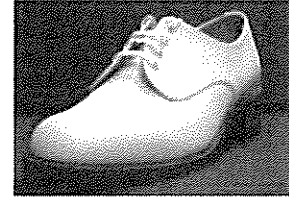
Size Range: 23

<u>NSN</u>	<u>SIZE</u>
8430-99-323-6747	3
8430-99-323-6748	3½
8430-99-323-6749	4
8430-99-323-6750	4½
8430-99-323-6751	5
8430-99-323-6752	5½
8430-99-323-6753	6
8430-99-323-6754	6½
8430-99-323-6755	7
8430-99-323-6756	7½
8430-99-323-6757	8
8430-99-323-6758	8½
8430-99-323-6759	9
8430-99-323-6760	9½
8430-99-323-6761	10
8430-99-323-6762	10½
8430-99-323-6763	11
8430-99-323-6764	11½
8430-99-323-6765	12
8430-99-323-6766	12½
8430-99-323-6767	13
8430-99-323-6769	14
8430-99-323-6771	15

Additional Information:

Section 2-5, DMC CD
FOOTWEAR

**SHOES, SERVICE, Female,
White, Tropical**



NSN:	8435-99-297-6383	DMC:	CD
Specification:	UK/SC/5736 @ 29466A	D of Q:	Pair
		PPQ:	001

Description: Shoes Service WRN, Tropical, white leather upper, plain toe.

Size Range: 16

<u>NSN</u>	<u>SIZE</u>
8435-99-297-6383	2 Medium
8435-99-297-6384	2 Large
8435-99-297-6385	3 Medium
8435-99-297-6386	3 Large
8435-99-297-6387	4 Medium
8435-99-297-6388	4 Large
8435-99-297-6389	5 Medium
8435-99-297-6390	5 Large
8435-99-297-6391	6 Medium
8435-99-297-6392	6 Large
8435-99-297-6393	7 Medium
8435-99-297-6394	7 Large
8435-99-297-6395	8 Medium
8435-99-297-6396	8 Large
8435-99-297-6397	9 Medium
8435-99-297-6398	9 Large

Additional Information: Supersedes Range 8435-99-138-6500 to 6535.

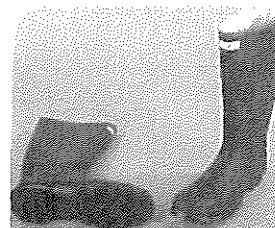
Section 2-5, DMC CD
FOOTWEAR

SAFETY AND LEISURE FOOTWEAR

BOOTS, Waders	
NSN: 8430-99-927-2391	DMC: CD
Specification: DC/CPS/6672 STYLE 24	D of Q: Pair
	PPQ: 001
Description: Boots, Thigh Waders. Hip. Rubber/PVC Waders, Unisex, thigh length, Rubber/PVC upper, antistatic, green colour, cleated rubber sole and heel.	
Size Range: 11	
<u>NSN</u>	<u>SIZE</u>
8430-99-927-2391	4
8430-99-942-4001	5
8430-99-942-4002	6
8430-99-942-4003	7
8430-99-942-4004	8
8430-99-942-4005	9
8430-99-942-4006	10
8430-99-942-4007	11
8430-99-942-4008	12
8430-99-942-4009	13
Additional Information: TO BS EN ISO 20347- Table 1, Classification 2, Design Type E	

Section 2-5, DMC CD
FOOTWEAR

**BOOTS, KNEE, Rubber, Unisex,
Wellington Style**



NSN:	8430-99-942-5933	DMC:	CD
Specification:	DC/CPS/6672 STYLE 23	D of Q:	Pair
		PPQ:	001

Description: Boots, knee length, Rubber, Unisex. Rubber/PVC upper, cleated rubber sole and heel .

Size Range: 12

<u>NSN</u>	<u>SIZE</u>
8430-99-942-5933	3
8430-99-942-5934	4
8430-99-942-5935	5
8430-99-942-5936	6
8430-99-942-5937	7
8430-99-942-5938	8
8430-99-942-5939	9
8430-99-942-5940	10
8430-99-942-5941	11
8430-99-942-5942	12
8430-99-942-5943	13
8430-99-942-5944	14

Additional Information: . TO BS EN ISO 20347- Table 1, Classification 2, Design Type D

Section 2-5, DMC CD
FOOTWEAR

**BOOTS, SAFETY,
Conductive, ITURRI**



NSN:	8430-99-869-5352	DMC:	CD
Specification:	DC/PS/5852	D of Q:	Pair
		PPQ:	001

Description: Boots, Safety. Black leather chukka style. Safety toe cap. POL and heat resistant. Non-slip conductive rubber sole and heel, ITURRI.

Range: 25

<u>NSN</u>	<u>SIZE</u>
8430-99-869-5352	2 Medium
8430-99-869-5353	2 Wide
8430-99-869-5354	3 Medium
8430-99-869-5355	3 Wide
8430-99-869-5356	4 Medium
8430-99-869-5357	4 Large
8430-99-869-5358	5 Medium
8430-99-869-5359	5 Large
8430-99-869-5360	6 Medium
8430-99-869-5361	6 Large
8430-99-869-5362	7 Medium
8430-99-869-5363	7 Large
8430-99-869-5364	8 Medium
8430-99-869-5365	8 Large
8430-99-869-5366	9 Medium
8430-99-869-5367	9 Large
8430-99-869-5368	10 Medium
8430-99-869-5369	10 Large
8430-99-869-5370	11 Medium
8430-99-869-5371	11 Large
8430-99-869-5372	12 Medium
8430-99-869-5373	12 Large
8430-99-869-5374	13 Medium
8430-99-869-5375	13 Large
8430-99-869-5376	14 Medium
8430-99-869-5377	14 Large

Additional Information:

Section 2-5, DMC CD
FOOTWEAR

**BOOTS, SAFETY,
High Leg, Anti-Static, ITURRI**



NSN:	8430-99-297-6732	DMC:	CD
Specification:	DC/PS/5853	D of Q:	Pair
		PPQ:	001

Description: Boots, Safety. High Leg. Black Leather upper. Steel internal toecap. Oil resistant and anti-static. Non-skid sole, ITURRI.

Size Range: 14

<u>NSN</u>	<u>SIZE</u>
8430-99-297-6732	2
8430-99-297-6733	3
8430-99-297-6734	4
8430-99-869-1170	5
8430-99-869-1172	6
8430-99-869-1174	7
8430-99-869-1176	8
8430-99-869-1178	9
8430-99-869-1180	10
8430-99-869-1182	11
8430-99-869-1184	12
8430-99-282-2339	13 Medium
8430-99-282-2340	14 Medium
8430-99-282-2341	15 Medium

Additional Information: For Aircraft maintenance workers.

Section 2-5, DMC CD
FOOTWEAR

**BOOTS, SAFETY,
Combat, High Leg, Black Leather,
ITURRI**



NSN:	8430-99-869-6709	DMC:	CD
Specification:	DC/PS/5841	D of Q:	Pair
		PPQ:	001

Description: Boots, safety, combat, high leg, Black Leather weather resistant leather upper. Rubber cleated sole and heel, non-slip. Capped toe. Laces up the front, ITURRI.

Range: 8

<u>NSN</u>	<u>SIZE</u>
8430-99-869-6709	5
8430-99-869-6710	6
8430-99-869-6711	7
8430-99-869-6712	8
8430-99-869-6713	9
8430-99-869-6714	10
8430-99-869-6715	11
8430-99-869-6716	12

Additional Information: For use by Royal Engineers.

**BOOTS, SAFETY,
Black, ITURRI**



NSN:	8430-99-136-9416	DMC:	CD
Specification:	DC/PS/5840	D of Q:	Pair
		PPQ:	001

Description: Boots Safety. Black. Chukka style. With steel internal toecap. Leather upper. Synthetic rubber non-slip sole and heel. ITURRI.

Range: 8

<u>NSN</u>	<u>SIZE</u>
8430-99-136-9416	5 Medium
8430-99-136-9417	6 Medium
8430-99-136-9418	7 Medium
8430-99-136-9419	8 Medium
8430-99-136-9420	9 Medium
8430-99-136-9421	10 Medium
8430-99-136-9422	11 Medium
8430-99-136-9423	12 Medium

Additional Information:

Section 2-5, DMC CD
FOOTWEAR

**BOOTS, SAFETY,
Hot Weather, Black, ITURRI**



NSN:	8430-99-161-4209	DMC:	CD
Specification:	UK/SC/5933	D of Q:	Pair
		PPQ:	001

Description: Boots, safety. Hot weather ankle length. Leather and textiles. Black with laces.ITURRI.

Range: 24

<u>NSN</u>	<u>SIZE</u>
8430-99-161-4209	3 Medium
8430-99-161-4210	3 Large
8430-99-161-4211	4 Medium
8430-99-161-4212	4 Large
8430-99-161-4213	5 Medium
8430-99-161-4214	5 Large
8430-99-161-4215	6 Medium
8430-99-161-4216	6 Large
8430-99-161-4217	7 Medium
8430-99-161-4218	7 Large
8430-99-161-4219	8 Medium
8430-99-161-4220	8 Large
8430-99-161-4221	9 Medium
8430-99-161-4222	9 Large
8430-99-161-4223	10 Medium
8430-99-161-4224	10 Large
8430-99-161-4225	11 Medium
8430-99-161-4226	11 Large
8430-99-161-4227	12 Medium
8430-99-161-4228	12 Large
8430-99-161-4229	13 Medium
8430-99-161-4230	13 Large
8430-99-161-4231	14 Medium
8430-99-161-4232	14 Large

Additional Information: For all services.

Section 2-5, DMC CD
FOOTWEAR

SHOES, SAFETY, Male, Black Leather, ITURRI	
NSN: 8430-99-669-8960	DMC: CD
Specification: DC/CPS/6672 STYLE 1	D of Q: Pair
	PPQ: 001

Description: Shoes, Safety, Male. Category S1, Black leather, ITURRI.	
Size Range: 9	
<u>NSN</u>	<u>SIZE</u>
8430-99-669-8960	5
8430-99-669-8961	6
8430-99-669-8962	7
8430-99-669-8963	8
8430-99-669-8964	9
8430-99-669-8965	10
8430-99-669-8966	11
8430-99-669-8967	12
8430-99-669-8968	13
Additional Information: TO BS EN ISO 20345- Clause 4, Table 1, Classification 1, Design Type A	

Section 2-5, DMC CD
FOOTWEAR

TRAINER, SAFETY, Male, Black Leather/Suede	
NSN: 8430-99-669-8969	DMC: CD
Specification: DC/CPS/6672 STYLE 2	D of Q: Pair
	PPQ: 001

Description: Trainer, Safety, Male. Category S1, Trainer style, Black Leather/Suede.	
Size Range: 9	
<u>NSN</u>	<u>SIZE</u>
8430-99-669-8969	5
8430-99-669-8970	6
8430-99-669-8971	7
8430-99-669-8972	8
8430-99-669-8973	9
8430-99-669-8974	10
8430-99-669-8975	11
8430-99-669-8976	12
8430-99-669-8977	13
Additional Information: TO BS EN ISO 20345- Clause 4, Table 1, Classification 1, Design Type A	

Section 2-5, DMC CD
FOOTWEAR

**SHOES, SAFETY, Male,
Black Leather, Padded Collar**

NSN: 8430-99-669-8978	DMC: CD
Specification: DC/CPS/6672 STYLE 3	D of Q: Pair
	PPQ: 001

Description: Shoes, Safety, Male. Category S2, HRO. Black Leather. Padded Collar.

Size Range: 9

<u>NSN</u>	<u>SIZE</u>
8430-99-669-8978	5
8430-99-669-8979	6
8430-99-669-8980	7
8430-99-669-8981	8
8430-99-669-8982	9
8430-99-669-8983	10
8430-99-669-8984	11
8430-99-669-8985	12
8430-99-669-8986	13

Additional Information: TO BS EN ISO 20345- Clause 4, Table 1, Classification 1, Design Type A

Section 2-5, DMC CD
FOOTWEAR

SHOES, SAFETY, Male, Black Leather, Padded Collar	
NSN: 8430-99-669-8987	DMC: CD
Specification: DC/CPS/6672 STYLE 4	D of Q: Pair
	PPQ: 001

Description: Shoes, Safety, Male. Category S3, Black Leather, Padded Collar.	
Size Range: 9	
<u>NSN</u>	<u>SIZE</u>
8430-99-669-8987	5
8430-99-669-8988	6
8430-99-669-8989	7
8430-99-669-8990	8
8430-99-669-8991	9
8430-99-669-8992	10
8430-99-669-8993	11
8430-99-669-8994	12
8430-99-669-8995	13
Additional Information: TO BS EN ISO 20345- Clause 4, Table 1, Classification 1, Design Type A	

Section 2-5, DMC CD
FOOTWEAR

BOOTS, SAFETY, Male, Ankle	
NSN: 8430-99-388-7249	DMC: CD
Specification: DC/CPS/6672 STYLE 5	D of Q: Pair
	PPQ: 001

Description: Boots, Safety, Male, Ankle, Category SB.P.HRO, Padded Collar.	
Size Range: 9	
<u>NSN</u>	<u>SIZE</u>
8430-99-388-7249	5
8430-99-388-7250	6
8430-99-388-7251	7
8430-99-388-7252	8
8430-99-388-7253	9
8430-99-388-7254	10
8430-99-388-7255	11
8430-99-388-7256	12
8430-99-388-7257	13
Additional Information: TO BS EN ISO 20345- Clause 4, Table 1, Classification 1, Design Type B	

Section 2-5, DMC CD
FOOTWEAR

BOOTS, SAFETY, Male, Ankle, Black Leather	
NSN: 8430-99-388-7258	DMC: CD
Specification: DC/CPS/6672 STYLE 6	D of Q: Pair
	PPQ: 001

Description: Boots, Safety, Male. Ankle, Category S1, Black Leather, Padded Collar.	
Size Range: 9	
<u>NSN</u>	<u>SIZE</u>
8430-99-388-7258	5
8430-99-388-7259	6
8430-99-388-7260	7
8430-99-388-7261	8
8430-99-388-7262	9
8430-99-388-7263	10
8430-99-388-7264	11
8430-99-388-7265	12
8430-99-388-7266	13
Additional Information: TO BS EN ISO 20345- Clause 4, Table 1, Classification 1, Design Type B	

Section 2-5, DMC CD
FOOTWEAR

BOOTS, SAFETY, Male, Ankle, Black Leather	
NSN: 8430-99-388-7267	DMC: CD
Specification: DC/CPS/6672 STYLE 7	D of Q: Pair
PPQ: 001	

Description: Boots, Safety, Male. Ankle, Category S1 - P, Black Leather, Padded Collar.	
Size Range: 9	
<u>NSN</u>	<u>SIZE</u>
8430-99-388-7267	5
8430-99-388-7268	6
8430-99-388-7269	7
8430-99-388-7270	8
8430-99-388-7271	9
8430-99-388-7272	10
8430-99-388-7273	11
8430-99-388-7274	12
8430-99-388-7275	13
Additional Information: TO BS EN ISO 20345- Clause 4, Table 1, Classification 1, Design Type B	

Section 2-5, DMC CD
FOOTWEAR

**BOOTS, SAFETY, Male,
Ankle, Black Leather**

NSN:	8430-99-388-7276	DMC:	CD
Specification:	DC/CPS/6672 STYLE 8	D of Q:	Pair
		PPQ:	001

Description: Boots, Safety, Male. Ankle, Category S3, Black Leather, Padded Collar.

Size Range: 9

<u>NSN</u>	<u>SIZE</u>
8430-99-388-7276	5
8430-99-388-7277	6
8430-99-388-7278	7
8430-99-388-7279	8
8430-99-388-7280	9
8430-99-388-7281	10
8430-99-388-7282	11
8430-99-388-7283	12
8430-99-388-7284	13

Additional Information: TO BS EN ISO 20345- Clause 4, Table 1, Classification 1, Design Type B

Section 2-5, DMC CD
FOOTWEAR

**BOOTS, SAFETY, Male,
Ankle Boots/High Leg, Black Leather**

NSN: 8430-99-555-6117	DMC: CD
Specification: DC/CPS/6672 STYLE 9	D of Q: Pair
	PPQ: 001

Description: Boots, Safety, Male. Ankle Boots/High Leg, Category S2, HRO, Black Leather, Padded Collar..

Size Range: 9

<u>NSN</u>	<u>SIZE</u>
8430-99-555-6117	5
8430-99-555-6118	6
8430-99-555-6119	7
8430-99-555-6120	8
8430-99-555-6121	9
8430-99-555-6122	10
8430-99-555-6123	11
8430-99-555-6124	12
8430-99-555-6125	13

Additional Information: TO BS EN ISO 20345- Clause 4, Table 1, Classification 1, Design Type B/C

Section 2-5, DMC CD
FOOTWEAR

BOOTS, SAFETY, Male, Ankle Boots/High Leg, Black Leather	
NSN: 8430-99-555-6126	DMC: CD
Specification: DC/CPS/6672 STYLE 10	D of Q: Pair
	PPQ: 001

Description: Boots, Safety, Male. Ankle Boots/High Leg, Category SB.P, HRO, Black Leather, Padded Collar..

Size Range: 9	
<u>NSN</u>	<u>SIZE</u>
8430-99-555-6126	5
8430-99-555-6127	6
8430-99-555-6128	7
8430-99-555-6129	8
8430-99-555-6130	9
8430-99-555-6131	10
8430-99-555-6132	11
8430-99-555-6133	12
8430-99-555-6134	13

Additional Information: TO BS EN ISO 20345- Clause 4, Table 1, Classification 1, Design Type B/C

Section 2-5, DMC CD
FOOTWEAR

BOOTS, SAFETY, Rigger, Unisex,	
NSN: 8430-99-435-3605	DMC: CD
Specification: DC/CPS/6672 STYLE 11	D of Q: Pair
	PPQ: 001

Description: Boots, Safety, Rigger, Unisex. Category SB.P, HRO, Leather.

Size Range: 11	
<u>NSN</u>	<u>SIZE</u>
8430-99-435-3605	3
8430-99-435-3606	4
8430-99-435-3607	5
8430-99-435-3608	6
8430-99-435-3609	7
8430-99-435-3610	8
8430-99-435-3611	9
8430-99-435-3612	10
8430-99-435-3613	11
8430-99-435-3614	12
8430-99-435-3615	13

Additional Information: TO BS EN ISO 20345- Clause 4, Table 1, Classification 1, Design Type C/D.

Section 2-5, DMC CD

FOOTWEAR

**BOOTS, SAFETY, Female,
Leather/Suede, Padded Collar**

NSN:	8435-99-407-3915	DMC:	CD
Specification:	DC/CPS/6672 STYLE 12	D of Q:	Pair
		PPQ:	001

Description: Boots, Safety, Female. Category SB.P.HRO. Leather/suede. Padded collar.

Size Range: 6

<u>NSN</u>	<u>SIZE</u>
8435-99-407-3915	3
8435-99-407-3916	4
8435-99-407-3917	5
8435-99-407-3918	6
8435-99-407-3919	7
8435-99-407-3920	8

Additional Information: TO BS EN ISO 20345- Clause 4, Table 1, Design Type A/B.

Section 2-5, DMC CD
FOOTWEAR

TRAINER, SAFETY, Female,	
NSN: 8435-99-407-3921	DMC: CD
Specification: DC/CPS/6672 STYLE 13	D of Q: Pair
	PPQ: 001

Description: Trainer, Safety, Female. Category S2, Trainer style, Black Leather/Suede.	
Size Range: 6	
<u>NSN</u>	<u>SIZE</u>
8435-99-407-3921	3
8435-99-407-3922	4
8435-99-407-3923	5
8435-99-407-3924	6
8435-99-407-3925	7
8435-99-407-3926	8
Additional Information: TO BS EN ISO 20345- Clause 4, Table 1, Design Type A/B.	

Section 2-5, DMC CD
FOOTWEAR

**SHOES, SAFETY, Female,
Lace Up, Black Leather**

NSN:	8435-99-407-3927	DMC:	CD
Specification:	DC/CPS/6672 STYLE 14	D of Q:	Pair
		PPQ:	001

Description: Shoes, Safety, Female. Category S2, Lace Up Style, Black leather.

Size Range: 6

<u>NSN</u>	<u>SIZE</u>
8435-99-407-3927	3
8435-99-407-3928	4
8435-99-407-3929	5
8435-99-407-3930	6
8435-99-407-3931	7
8435-99-407-3932	8

Additional Information: TO BS EN ISO 20345- Clause 4, Table 1, Design Type A/B.

**BOOTS, SAFETY, Female,
Plain Front, Black Leather**

NSN:	8435-99-407-3933	DMC:	CD
Specification:	DC/CPS/6672 STYLE 15	D of Q:	Pair
		PPQ:	001

Description: Boots, Safety, Female. Category S2, Plain Front, Black Leather, Padded Collar.

Size Range: 6

<u>NSN</u>	<u>SIZE</u>
8435-99-407-3933	3
8435-99-407-3934	4
8435-99-407-3935	5
8435-99-407-3936	6
8435-99-407-3937	7
8435-99-407-3938	8

Additional Information: TO BS EN ISO 20345- Clause 4, Table 1, Design Type A/B.

Section 2-5, DMC CD
FOOTWEAR

SHOES, SAFETY, Female, Black Leather	
NSN: 8435-99-407-3939	DMC: CD
Specification: DC/CPS/6672 STYLE 16	D of Q: Pair
PPQ: 001	

Description: Shoes, Safety, Female. Category S2, HRO, Black Leather.	
Size Range: 6	
<u>NSN</u>	<u>SIZE</u>
8435-99-407-3939	3
8435-99-407-3940	4
8435-99-407-3941	5
8435-99-407-3942	6
8435-99-407-3943	7
8435-99-407-3944	8
Additional Information: TO BS EN ISO 20345- Clause 4, Table 1, Design Type A/B.	

Section 2-5, DMC CD
FOOTWEAR

BOOTS, SAFETY, Welders, Unisex,

NSN:	8430-99-669-9017	DMC:	CD
Specification:	DC/CPS/6672 STYLE 18	D of Q:	Pair
		PPQ:	001

Description: Boots, Safety, Unisex. Welders/Burners. Category SB.P, HRO, Black Leather Ankle Boot, 5 or 6 eyelet quick release system.

Size Range: 11

<u>NSN</u>	<u>SIZE</u>
8430-99-669-9017	3
8430-99-669-9018	4
8430-99-669-9019	5
8430-99-669-9020	6
8430-99-669-9021	7
8430-99-669-9022	8
8430-99-669-9023	9
8430-99-669-9024	10
8430-99-669-9025	11
8430-99-669-9026	12
8430-99-669-9027	13

Additional Information: TO BS EN ISO 20349- Table 1, Classification 1, Design Type B.

Section 2-5, DMC CD
FOOTWEAR

SHOES, SAFETY, Male, Composite Protection	
NSN: 8430-99-155-0894	DMC: CD
Specification: DC/CPS/6672 STYLE 19	D of Q: Pair
	PPQ: 001

Description: Shoes, Safety, Male. Composite Safety Footwear, Category S1, Black Leather, Composite Protection.	
Size Range: 9	
<u>NSN</u>	<u>SIZE</u>
8430-99-155-0894	5
8430-99-155-0895	6
8430-99-155-0896	7
8430-99-155-0897	8
8430-99-155-0898	9
8430-99-155-0899	10
8430-99-155-0900	11
8430-99-155-0901	12
8430-99-155-0902	13
Additional Information: TO BS EN ISO 20345 - Table 1, Classification 1, Design Type A and B.	

Section 2-5, DMC CD
FOOTWEAR

**BOOTS, SAFETY, Male,
Ankle, Composite Protection**

NSN:	8430-99-155-0903	DMC:	CD
Specification:	DC/CPS/6672 STYLE 20	D of Q:	Pair
		PPQ:	001

Description: Boots, Safety, Male. Plain Front, Category S2, Black Leather, Padded Collar, Composite Protection.

Size Range: 9

<u>NSN</u>	<u>SIZE</u>
8430-99-155-0903	5
8430-99-155-0904	6
8430-99-155-0905	7
8430-99-155-0906	8
8430-99-155-0907	9
8430-99-155-0908	10
8430-99-155-0909	11
8430-99-155-0910	12
8430-99-155-0911	13

Additional Information: TO BS EN ISO 20345 - Table 1, Classification 1, Design Type A and B.

Section 2-5, DMC CD
FOOTWEAR

SHOES, SAFETY, Male, Composite Protection			
NSN:	8430-99-155-0912	DMC:	CD
Specification:	DC/CPS/6672 STYLE 21	D of Q:	Pair
		PPQ:	001

Description: Shoes, Safety, Male. Category S3, Black Leather, Padded Collar, Composite Protection.

Size Range: 9	
<u>NSN</u>	<u>SIZE</u>
8430-99-155-0912	5
8430-99-155-0913	6
8430-99-155-0914	7
8430-99-155-0915	8
8430-99-155-0916	9
8430-99-155-0917	10
8430-99-155-0918	11
8430-99-155-0919	12
8430-99-155-0920	13

Additional Information: TO BS EN ISO 20345 - Table 1, Classification 1, Design Type A and B.

Section 2-5, DMC CD
FOOTWEAR

BOOTS, Rubber, Safety, Unisex	
NSN: 8430-99-155-0932	DMC: CD
Specification: DC/CPS/6672 STYLE 22	D of Q: Pair
	PPQ: 001

Description: Boots, Rubber, Safety, Unisex. Knee length. Rubber/PVC upper, cleated rubber sole and heel with safety toe cap.

Size Range: 11	
<u>NSN</u>	<u>SIZE</u>
8430-99-155-0932	3
8430-99-155-0933	4
8430-99-155-0934	5
8430-99-155-0935	6
8430-99-155-0936	7
8430-99-155-0937	8
8430-99-155-0938	9
8430-99-155-0939	10
8430-99-155-0940	11
8430-99-155-0941	12
8430-99-155-0942	13

Additional Information: TO BS EN ISO 20345- Table 1, Classification 2, Design Type D.

Section 2-5, DMC CD
FOOTWEAR

**BOOTS, SAFETY, Zip Ankle, Male,
Black Leather**

NSN: 8430-99-501-2172	DMC: CD
Specification: DC/CPS/6672 STYLE 25	D of Q: Pair
	PPQ: 001

Description: Boots, Safety, Zip Ankle, Male, Category S3, Black Leather, MVP liner, Padded Collar, Composite toe cap and penetration resistant plate. Lace up and zip closing system..

Size Range: 11

<u>NSN</u>	<u>SIZE</u>
8430-99-501-2172	3
8430-99-501-2173	4
8430-99-501-2174	5
8430-99-501-2175	6
8430-99-501-2176	7
8430-99-501-2177	8
8430-99-501-2178	9
8430-99-501-2179	10
8430-99-501-2180	11
8430-99-501-2181	12
8430-99-501-2182	13

Additional Information: TO BS EN ISO 20345- Clause 4, Table 1, Classification 1, Design Type C

Section 2-5, DMC CD
FOOTWEAR

**BOOTS, SAFETY,
Ankle, Unisex**

NSN:	8430-99-563-7741	DMC:	CD
Specification:	DC/CPS/6672 STYLE 5	D of Q:	Pair
TL Nos :	TL1077963 to 7973	PPQ:	001

Description: Boots, Safety, Ankle, Unisex, Style 5, Padded Collar, Category SB.P.HRO.

Size Range: 11

<u>NSN</u>	<u>SIZE</u>
8430-99-563-7741	3
8430-99-563-7742	4
8430-99-563-7743	5
8430-99-563-7744	6
8430-99-563-7745	7
8430-99-563-7746	8
8430-99-563-7747	9
8430-99-563-7748	10
8430-99-563-7749	11
8430-99-563-7750	12
8430-99-563-7751	13

Additional Information:

Section 2-5, DMC CD
FOOTWEAR

BOOTS, SAFETY, Male, Ankle, Black Leather	
NSN: 8430-99-508-3393	DMC: CD
Specification: DC/CPS/6672 STYLE 26	D of Q: Pair
	PPQ: 001

Description: Boots, Safety, Ankle Boots, Category S3, Black Leather, MVP liner, Padded Collar, Composite toe cap and penetration resistant plate. Lace up and zip closing system..

Size Range: 11

<u>NSN</u>	<u>SIZE</u>
8430-99-508-3393	3
8430-99-508-3394	4
8430-99-508-3395	5
8430-99-508-3396	6
8430-99-508-3397	7
8430-99-508-3398	8
8430-99-508-3399	9
8430-99-508-3400	10
8430-99-508-3401	11
8430-99-508-3402	12
8430-99-508-3403	13

Additional Information: TO BS EN ISO 20345- Clause 4, Table 1, Classification 1, Design Type B

Section 2-5, DMC CD
FOOTWEAR

**SANDALS,
Warm Weather**



NSN:	8430-99-494-7887	DMC:	CD
Specification:	DC/CPS/7047	D of Q:	Pair
		PPQ:	001

Description: Sandals, Warm Weather. With rubber sole.

Size Range: 11

<u>NSN</u>	<u>SIZE</u>
8430-99-494-7887	4 Medium
8430-99-494-7888	5 Medium
8430-99-494-7889	6 Medium
8430-99-494-7890	7 Medium
8430-99-494-7891	8 Medium
8430-99-494-7892	9 Medium
8430-99-494-7893	10 Medium
8430-99-494-7894	11 Medium
8430-99-494-7895	12 Medium
8430-99-494-7896	13 Medium
8430-99-494-7897	14 Medium

Additional Information:

Section 2-5, DMC CD
FOOTWEAR

SHOES FITNESS, Trainer Indoor Male.			
NSN:	8430-99-241-7443	DMC:	CD
Specification:	DC/PS/6696	D of Q:	Pair
		PPQ:	001

Description: Shoes fitness trainer, indoor. Slip and shock resistant, nonslip, lacing fastening, non-marking sole, washable, durable, flat sole padded tongue, white. Male.

Size Range: 12	
<u>NSN</u>	<u>SIZE</u>
8430-99-241-7443	5 Medium
8430-99-241-7444	5 Wide
8430-99-241-7447	6 Medium
8430-99-241-7448	6 Wide
8430-99-241-7451	7 Medium
8430-99-241-7455	8 Medium
8430-99-241-7456	8 Wide
8430-99-241-7463	10 Medium
8430-99-241-7475	13 Medium
8430-99-241-7479	14 Medium
8430-99-241-7483	15 Medium
8430-99-241-7484	15 Wide

Additional Information: These items were made obsolescent in October 2019 – they have been superseded by 8430-99-731-5978 to 731-5988.

Section 2-5, DMC CD
FOOTWEAR

SHOES, Fitness Trainer, Indoor, Female			
NSN:	8435-99-241-7485	DMC:	CD
Specification:	DC/PS/6696	D of Q:	Pair
		PPQ:	001

Description: Shoes, Fitness Trainer, Indoor. Female. Nonslip tread, lacing fastening, non-marking sole, washable, durable, flat sole padded tongue, white.

Size Range: 12	
<u>NSN</u>	<u>SIZE</u>
8435-99-241-7485	3 Medium
8435-99-241-7486	3 Wide
8435-99-241-7489	4 Medium
8435-99-241-7490	4 Wide
8435-99-241-7493	5 Medium
8435-99-241-7494	5 Wide
8435-99-241-7497	6 Medium
8435-99-241-7501	7 Medium
8435-99-241-7505	8 Medium
8435-99-241-7506	8 Wide
8435-99-241-7509	9 Medium
8435-99-241-7510	9 Wide

Additional Information: The wide sizes were made obsolescent in March 2018 and the medium sizes in October 2019. The items have been superseded by 8435-99-731-5989 to 731-5995.

Section 2-5, DMC CD
FOOTWEAR

**SHOES, Fitness Trainer Outdoor,
Male**

NSN: 8430-99-976-7531	DMC: CD
Specification: DC/PS/6697	D of Q: Pair
	PPQ: 001

Description: Shoes, Fitness Trainer Outdoor. Male.

Size Range: 16

<u>NSN</u>	<u>SIZE</u>
8430-99-976-7531	5 Medium
8430-99-976-7536	6 Wide
8430-99-976-7539	7 Medium
8430-99-976-7540	7 Wide
8430-99-976-7543	8 Medium
8430-99-976-7544	8 Wide
8430-99-976-7547	9 Medium
8430-99-976-7548	9 Wide
8430-99-976-7551	10 Medium
8430-99-976-7552	10 Wide
8430-99-976-7555	11 Medium
8430-99-976-7559	12 Medium
8430-99-976-7564	13 Wide
8430-99-976-7568	14 Wide
8430-99-976-7571	15 Medium
8430-99-976-7572	15 Wide

Additional Information: These items were made obsolescent – October 2019 , they have been superseded by 8430-99-731-5978 to 731-5988.

Section 2-5, DMC CD
FOOTWEAR

**SHOES, FITNESS,
Trainer Male, Indoor/Outdoor**

NSN: 8430-99-731-5978	DMC: CD
Specification: DC/PS/6697	D of Q: Pair
TL NOS: TL1065137 to 5147	PPQ: 001

Description: Shoes, fitness, trainer male. For indoor and outdoor use. Toeguard or Kick-up, durable, slip resistant, lace fastening, padded tongue.

Size Range: 11

<u>NSN</u>	<u>SIZE</u>
8430-99-731-5978	5
8430-99-731-5979	6
8430-99-731-5980	7
8430-99-731-5981	8
8430-99-731-5982	9
8430-99-731-5983	10
8430-99-731-5984	11
8430-99-731-5985	12
8430-99-731-5986	13
8430-99-731-5987	14
8430-99-731-5988	15

Additional Information:

Section 2-5, DMC CD
FOOTWEAR

**SHOES, FITNESS TRAINER,
Female, Indoor/Outdoor.**

NSN: 8435-99-731-5989	DMC: CD
Specification: DC/PS/6697	D of Q: Pair
TL NOS: TL1065148 to 5152/5154&5155	PPQ: 001

Description: Shoes, Fitness Trainer, Female. For indoor and outdoor use. Toeguard or Kick-up, durable, slip resistant, lace fastening, padded tongue.

Size Range: 7

<u>NSN</u>	<u>SIZE</u>
8435-99-731-5989	3
8435-99-731-5990	4
8435-99-731-5991	5
8435-99-731-5992	6
8435-99-731-5993	7
8435-99-731-5994	8
8435-99-731-5995	9

Additional Information:

Section 2-5, DMC CD
FOOTWEAR

SHOES, FITNESS TRAINER
Outdoor, Female

NSN: 8435-99-976-7573	DMC: CD
Specification: DC/PS/6697	D of Q: Pair
	PPQ: 001

Description: Shoes, Fitness, Trainer, Outdoor.

Size Range: 6

<u>NSN</u>	<u>SIZE</u>
8435-99-976-7573	3 Medium
8435-99-976-7574	3 Wide
8435-99-976-7577	4 Medium
8435-99-976-7585	6 Medium
8435-99-976-7589	7 Medium
8435-99-976-7597	9 Medium

Additional Information: The wide sizes were made obsolescent in March 2018 and the medium sizes in October 2019. The items have been superseded by 8435-99-731-5989 to 731-5995.

Section 2-5, DMC CD
FOOTWEAR

ANCILLARY FOOTWEAR ITEMS AND SOCKS

FOOT MEASURING BOARD, Combat Assault Boot	
NSN: 8335-99-555-0447	DMC: CD
Specification: A0/16140	D of Q: Each
	PPQ: 001

Description: Foot Measuring Board. To Ensure the correct fitting of Combat Assault Boots. Measures length & width. Complete with Instructions.

Size Range: Single

Additional Information:

FOOT MEASURING DEVICE	
NSN: 8335-99-670-7058	DMC: CD
Specification: DC/CID/7001 40057819	D of Q: Each
TL NO: TL1075222	PPQ: 001

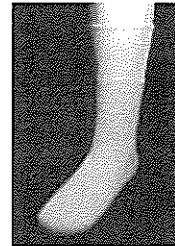
Description: Foot Measuring Device. For Foot Size range 3 to 15. Brannock Foot Measuring Device. For a guideline of foot size for all contracted military footwear.

Size Range: Single

Additional Information:

Section 2-5, DMC CD
FOOTWEAR

**SOCKS,
Extreme Cold Weather**



NSN:	8415-99-908-8235	DMC:	CD
Specification:	UK/SC/6875 @ D02475	D of Q:	Pair
		PPQ:	005

Description: Socks, Extreme Cold Weather. Wool and nylon mix, undyed, with high crimp leg.

Range: 3

<u>NSN</u>	<u>SIZE</u>
8415-99-908-8235	3 - 6
8415-99-908-8236	7 - 10
8415-99-908-8237	11 - 14

Additional Information:

**SOCKS, Black, Long, Waterproof,
MVP**

NSN:	8415-99-670-0050	DMC:	CD
Specification:	DC/PS/6961	D of Q:	Pair
		PPQ:	001

Description: Socks, thermal and immersion protective, black, long, waterproof and breathable.

Range: 4

<u>NSN</u>	<u>SIZE</u>
8415-99-670-0050	3 - 5
8415-99-670-0051	6 - 8
8415-99-670-0052	9 - 11
8415-99-670-0053	12 - 14

Additional Information:

Section 2-5, DMC CD
FOOTWEAR

**SOCKS,
Beige and White, Mid Calf Length**



NSN:	8440-99-908-8250	DMC:	CD
Specification:	UK/SC/6878 @ D02480	D of Q:	Pair
		PPQ:	001

Description: Socks, beige and white, cushion sole, mid calf length, with air channels and breathable airways, warm weather and desert.

Range: 3

<u>NSN</u>	<u>SIZE</u>
8440-99-908-8250	3 - 6
8440-99-908-8251	7 - 10
8440-99-908-8252	11 - 14

Additional Information: Replaced by Warm Weather Black Sock - 8440 99 731 4226 to 4228

**SOCKS,
Black, General Issue**

NSN:	8440-99-731-4226	DMC:	CD
Specification:	UK/SC/6981 D02798	D of Q:	Pair
		PPQ:	

Description: Socks, Black, General Issue, Mid Calf Length, ribbed with plush loops in the foot.

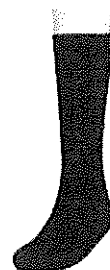
Range: 3

<u>NSN</u>	<u>SIZE</u>
8440-99-731-4226	3 - 6
8440-99-731-4227	7 - 10
8440-99-731-4228	11 - 14

Additional Information:

Section 2-5, DMC CD
FOOTWEAR

**SOCKS,
Black, Mid Calf Length**



NSN: 8440-99-908-8253	DMC: CD
Specification: UK/SC/6879 @ D02481	D of Q: Pair
	PPQ: 005

Description: Socks, wool and nylon mix, black, mid calf length, thin.

Range: 3

<u>NSN</u>	<u>SIZE</u>
8440-99-908-8253	3 - 6
8440-99-908-8254	7 - 10
8440-99-908-8255	11 - 14

Additional Information:

**SOCKS,
Khaki, Mid Calf Length**



NSN: 8440-99-908-8256	DMC: CD
Specification: UK/SC/6879 @ D02482	D of Q: Pair
	PPQ: 005

Description: Socks, wool and nylon mix, khaki, mid calf length, thin.

Range: 3

<u>NSN</u>	<u>SIZE</u>
8440-99-908-8256	3 - 6
8440-99-908-8257	7 - 10
8440-99-908-8258	11 - 14

Additional Information:

Section 2-5, DMC CD
FOOTWEAR

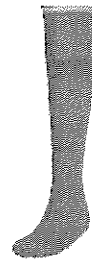
**SOCKS,
Red, Long**



NSN:	8440-99-908-8238	DMC:	CD
Specification:	UK/SC/6876 @ D02476	D of Q:	Pair
		PPQ:	001

Description: Socks, long, red, wool and nylon mix, knee length with ribbed top.	
Range: 3	
<u>NSN</u>	<u>SIZE</u>
8440-99-908-8238	3 - 6
8440-99-908-8239	7 - 10
8440-99-908-8240	11 - 14
Additional Information: For Adventurous Training/Mountaineering	

**SOCKS,
Stone, Long**



NSN:	8440-99-908-8241	DMC:	CD
Specification:	UK/SC/6877 @ D02477	D of Q:	Pair
		PPQ:	001

Description: Socks, long, stone, wool and nylon mix, knee length, thin with ribbed top.	
Range: 3	
<u>NSN</u>	<u>SIZE</u>
8440-99-908-8241	3 - 6
8440-99-908-8242	7 - 10
8440-99-908-8243	11 - 14
Additional Information:	

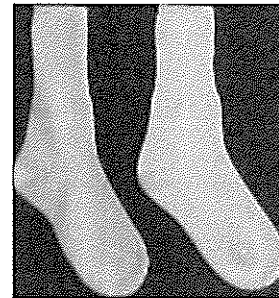
Section 2-5, DMC CD
FOOTWEAR

SOCKS, White	
NSN: 8440-99-908-8259	DMC: CD
Specification: UK/SC/6880 @ D02483	D of Q: Pair
	PPQ: 005



Description: Socks, cotton and nylon mix, white, thin.	
Range: 3	
<u>NSN</u>	<u>SIZE</u>
8440-99-908-8259	3 - 6
8440-99-908-8260	7 - 10
8440-99-908-8261	11 - 14
Additional Information:	

SOCKS, ATHLETES, White	
NSN: 8415-99-908-8262	DMC: CD
Specification: UK/SC/6881 @ D02484	D of Q: Pair
	PPQ: 001



Description: Socks, Physical Training, Tri-Service. Cotton and nylon mix, white.	
Range: 3	
<u>NSN</u>	<u>SIZE</u>
8415-99-908-8262	3 - 6
8415-99-908-8263	7 - 10
8415-99-908-8264	11 - 14
Additional Information:	

Section 2-5, DMC CD
Footwear

Index of Nato Stock Numbers

8335-99-167-5968,....Page 56	8335-99-233-1542,....Page 50	8335-99-371-3208, ... Page 54
8335-99-167-5969,....Page 56	8335-99-233-1543,....Page 50	8335-99-371-3209, ... Page 54
8335-99-167-5970,....Page 56	8335-99-233-1544,....Page 50	8335-99-371-3210, ... Page 54
8335-99-167-5971,....Page 56	8335-99-233-1545,....Page 50	8335-99-371-3211, ... Page 54
8335-99-167-5972,....Page 56	8335-99-233-1546,....Page 50	8335-99-371-3212, ... Page 54
8335-99-167-5973,....Page 56	8335-99-233-1547,....Page 52	8335-99-371-3213, ... Page 54
8335-99-167-5974,....Page 56	8335-99-233-1548,....Page 52	8335-99-555-0447, . Page 121
8335-99-167-5975,....Page 56	8335-99-233-1549,....Page 52	8335-99-670-7058, . Page 121
8335-99-167-5976,....Page 56	8335-99-233-1550,....Page 52	8335-99-936-4058, ... Page 49
8335-99-167-5977,....Page 56	8335-99-233-1551,....Page 52	8335-99-936-4059, ... Page 49
8335-99-167-5978,....Page 56	8335-99-233-1552,....Page 52	8335-99-936-4060, ... Page 49
8335-99-167-5979,....Page 58	8335-99-233-1553,....Page 52	8335-99-936-4061, ... Page 49
8335-99-167-5980,....Page 58	8335-99-297-9906,....Page 51	8335-99-936-4062, ... Page 49
8335-99-167-5981,....Page 58	8335-99-297-9907,....Page 51	8335-99-936-4063, ... Page 49
8335-99-167-5982,....Page 58	8335-99-297-9908,....Page 51	8335-99-936-4064, ... Page 49
8335-99-167-5983,....Page 58	8335-99-297-9909,....Page 51	8335-99-936-4065, ... Page 49
8335-99-167-5984,....Page 58	8335-99-297-9910,....Page 51	8335-99-936-4066, ... Page 49
8335-99-167-5985,....Page 58	8335-99-297-9911,....Page 51	8335-99-936-4067, ... Page 49
8335-99-217-0364,....Page 57	8335-99-297-9912,....Page 51	8335-99-936-4068, ... Page 49
8335-99-217-0365,....Page 57	8335-99-297-9913,....Page 51	8335-99-936-4069, ... Page 55
8335-99-217-0366,....Page 57	8335-99-297-9914,....Page 51	8335-99-936-4070, ... Page 55
8335-99-217-0367,....Page 57	8335-99-297-9915,....Page 51	8335-99-936-4071, ... Page 55
8335-99-217-0368,....Page 57	8335-99-297-9916,....Page 51	8335-99-936-4072, ... Page 55
8335-99-217-0369,....Page 57	8335-99-297-9917,....Page 53	8335-99-936-4073, ... Page 55
8335-99-217-0370,....Page 57	8335-99-297-9918,....Page 53	8335-99-936-4074, ... Page 55
8335-99-217-0371,....Page 57	8335-99-297-9919,....Page 53	8335-99-936-4075, ... Page 55
8335-99-217-0372,....Page 57	8335-99-297-9920,....Page 53	8415-99-670-0050, . Page 122
8335-99-217-0373,....Page 57	8335-99-297-9921,....Page 53	8415-99-670-0051, . Page 122
8335-99-217-0374,....Page 57	8335-99-297-9922,....Page 53	8415-99-670-0052, . Page 122
8335-99-217-0375,....Page 59	8335-99-297-9923,....Page 53	8415-99-670-0053, . Page 122
8335-99-217-0376,....Page 59	8335-99-371-3196,....Page 48	8415-99-908-8235, . Page 122
8335-99-217-0377,....Page 59	8335-99-371-3197,....Page 48	8415-99-908-8236, . Page 122
8335-99-217-0378,....Page 59	8335-99-371-3198,....Page 48	8415-99-908-8237, . Page 122
8335-99-217-0379,....Page 59	8335-99-371-3199,....Page 48	8415-99-908-8262, . Page 126
8335-99-217-0380,....Page 59	8335-99-371-3200,....Page 48	8415-99-908-8263, . Page 126
8335-99-217-0381,....Page 59	8335-99-371-3201,....Page 48	8415-99-908-8264, . Page 126
8335-99-233-1536,....Page 50	8335-99-371-3202,....Page 48	8430-99-125-8833, ... Page 60
8335-99-233-1537,....Page 50	8335-99-371-3203,....Page 48	8430-99-125-8834, ... Page 60
8335-99-233-1538,....Page 50	8335-99-371-3204,....Page 48	8430-99-125-8835, ... Page 60
8335-99-233-1539,....Page 50	8335-99-371-3205,....Page 48	8430-99-125-8836, ... Page 60
8335-99-233-1540,....Page 50	8335-99-371-3206,....Page 48	8430-99-125-8837, ... Page 60
8335-99-233-1541,....Page 50	8335-99-371-3207,....Page 54	8430-99-125-8838, ... Page 60

Section 2-5, DMC CD

Footwear

8430-99-157-8176,....Page 27	8430-99-167-5949,....Page 16	8430-99-241-6142, ... Page 25
8430-99-157-8177,....Page 27	8430-99-167-5950,....Page 16	8430-99-241-6143, ... Page 25
8430-99-157-8178,....Page 27	8430-99-167-5951,....Page 16	8430-99-241-6144, ... Page 25
8430-99-157-8179,....Page 27	8430-99-167-5952,....Page 16	8430-99-241-7443, . Page 115
8430-99-161-4209,....Page 90	8430-99-167-5953,....Page 16	8430-99-241-7444, . Page 115
8430-99-161-4210,....Page 90	8430-99-216-0818,....Page 28	8430-99-241-7447, . Page 115
8430-99-161-4211,....Page 90	8430-99-216-0819,....Page 28	8430-99-241-7448, . Page 115
8430-99-161-4212,....Page 90	8430-99-216-0820,....Page 28	8430-99-241-7451, . Page 115
8430-99-161-4213,....Page 90	8430-99-217-0328,....Page 17	8430-99-241-7455, . Page 115
8430-99-161-4214,....Page 90	8430-99-217-0329,....Page 17	8430-99-241-7456, . Page 115
8430-99-161-4215,....Page 90	8430-99-217-0330,....Page 17	8430-99-241-7463, . Page 115
8430-99-161-4216,....Page 90	8430-99-217-0331,....Page 17	8430-99-241-7475, . Page 115
8430-99-161-4217,....Page 90	8430-99-217-0332,....Page 17	8430-99-241-7479, . Page 115
8430-99-161-4218,....Page 90	8430-99-217-0333,....Page 17	8430-99-241-7483, . Page 115
8430-99-161-4219,....Page 90	8430-99-217-0334,....Page 17	8430-99-241-7484, . Page 115
8430-99-161-4220,....Page 90	8430-99-217-0335,....Page 17	8430-99-243-6586, ... Page 37
8430-99-161-4221,....Page 90	8430-99-217-0336,....Page 17	8430-99-243-6587, ... Page 37
8430-99-161-4222,....Page 90	8430-99-217-0337,....Page 17	8430-99-243-6588, ... Page 37
8430-99-161-4223,....Page 90	8430-99-217-0338,....Page 17	8430-99-243-6589, ... Page 37
8430-99-161-4224,....Page 90	8430-99-217-0339,....Page 17	8430-99-243-6590, ... Page 37
8430-99-161-4225,....Page 90	8430-99-217-0340,....Page 17	8430-99-243-6591, ... Page 37
8430-99-161-4226,....Page 90	8430-99-217-0341,....Page 17	8430-99-243-6592, ... Page 37
8430-99-161-4227,....Page 90	8430-99-217-0342,....Page 17	8430-99-243-6593, ... Page 37
8430-99-161-4228,....Page 90	8430-99-217-0343,....Page 17	8430-99-243-6594, ... Page 37
8430-99-161-4229,....Page 90	8430-99-217-0344,....Page 17	8430-99-243-6595, ... Page 37
8430-99-161-4230,....Page 90	8430-99-217-0345,....Page 17	8430-99-243-6596, ... Page 37
8430-99-161-4231,....Page 90	8430-99-217-0346,....Page 17	8430-99-243-6597, ... Page 37
8430-99-161-4232,....Page 90	8430-99-217-0347,....Page 17	8430-99-243-6598, ... Page 37
8430-99-167-5932,....Page 16	8430-99-217-0348,....Page 17	8430-99-243-6599, ... Page 37
8430-99-167-5933,....Page 16	8430-99-217-0349,....Page 17	8430-99-243-6600, ... Page 37
8430-99-167-5934,....Page 16	8430-99-241-5893,....Page 70	8430-99-243-6601, ... Page 37
8430-99-167-5935,....Page 16	8430-99-241-5894,....Page 70	8430-99-243-6602, ... Page 37
8430-99-167-5936,....Page 16	8430-99-241-5896,....Page 70	8430-99-243-6603, ... Page 37
8430-99-167-5937,....Page 16	8430-99-241-5897,....Page 70	8430-99-243-6604, ... Page 37
8430-99-167-5938,....Page 16	8430-99-241-6131,....Page 25	8430-99-243-6605, ... Page 37
8430-99-167-5939,....Page 16	8430-99-241-6132,....Page 25	8430-99-243-6606, ... Page 37
8430-99-167-5940,....Page 16	8430-99-241-6133,....Page 25	8430-99-243-6607, ... Page 37
8430-99-167-5941,....Page 16	8430-99-241-6134,....Page 25	8430-99-255-3788, Page 7
8430-99-167-5942,....Page 16	8430-99-241-6135,....Page 25	8430-99-262-1697, ... Page 23
8430-99-167-5943,....Page 16	8430-99-241-6136,....Page 25	8430-99-262-1701, ... Page 23
8430-99-167-5944,....Page 16	8430-99-241-6137,....Page 25	8430-99-282-2339, ... Page 88
8430-99-167-5945,....Page 16	8430-99-241-6138,....Page 25	8430-99-282-2340, ... Page 88
8430-99-167-5946,....Page 16	8430-99-241-6139,....Page 25	8430-99-282-2341, ... Page 88
8430-99-167-5947,....Page 16	8430-99-241-6140,....Page 25	8430-99-297-6231, ... Page 71
8430-99-167-5948,....Page 16	8430-99-241-6141,....Page 25	8430-99-297-6232, ... Page 71

Section 2-5, DMC CD

Footwear

8430-99-435-3612,..Page	101	8430-99-555-6118,....Page	99	8430-99-669-8966, ... Page	91
8430-99-435-3613,..Page	101	8430-99-555-6119,....Page	99	8430-99-669-8967, ... Page	91
8430-99-435-3614,..Page	101	8430-99-555-6120,....Page	99	8430-99-669-8968, ... Page	91
8430-99-435-3615,..Page	101	8430-99-555-6121,....Page	99	8430-99-669-8969, ... Page	92
8430-99-494-7887,..Page	114	8430-99-555-6122,....Page	99	8430-99-669-8970, ... Page	92
8430-99-494-7888,..Page	114	8430-99-555-6123,....Page	99	8430-99-669-8971, ... Page	92
8430-99-494-7889,..Page	114	8430-99-555-6124,....Page	99	8430-99-669-8972, ... Page	92
8430-99-494-7890,..Page	114	8430-99-555-6125,....Page	99	8430-99-669-8973, ... Page	92
8430-99-494-7891,..Page	114	8430-99-555-6126,..Page	100	8430-99-669-8974, ... Page	92
8430-99-494-7892,..Page	114	8430-99-555-6127,..Page	100	8430-99-669-8975, ... Page	92
8430-99-494-7893,..Page	114	8430-99-555-6128,..Page	100	8430-99-669-8976, ... Page	92
8430-99-494-7894,..Page	114	8430-99-555-6129,..Page	100	8430-99-669-8977, ... Page	92
8430-99-494-7895,..Page	114	8430-99-555-6130,..Page	100	8430-99-669-8978, ... Page	93
8430-99-494-7896,..Page	114	8430-99-555-6131,..Page	100	8430-99-669-8979, ... Page	93
8430-99-494-7897,..Page	114	8430-99-555-6132,..Page	100	8430-99-669-8980, ... Page	93
8430-99-501-2172,..Page	111	8430-99-555-6133,..Page	100	8430-99-669-8981, ... Page	93
8430-99-501-2173-, Page	111	8430-99-555-6134,..Page	100	8430-99-669-8982, ... Page	93
8430-99-501-2174,..Page	111	8430-99-563-7741,..Page	112	8430-99-669-8983, ... Page	93
8430-99-501-2175,..Page	111	8430-99-563-7742,..Page	112	8430-99-669-8984, ... Page	93
8430-99-501-2176,..Page	111	8430-99-563-7743,..Page	112	8430-99-669-8985, ... Page	93
8430-99-501-2177,..Page	111	8430-99-563-7744,..Page	112	8430-99-669-8986, ... Page	93
8430-99-501-2178,..Page	111	8430-99-563-7745,..Page	112	8430-99-669-8987, ... Page	94
8430-99-501-2179,..Page	111	8430-99-563-7746,..Page	112	8430-99-669-8988, ... Page	94
8430-99-501-2180,..Page	111	8430-99-563-7747,..Page	112	8430-99-669-8989, ... Page	94
8430-99-501-2181,..Page	111	8430-99-563-7748,..Page	112	8430-99-669-8990, ... Page	94
8430-99-501-2182,..Page	111	8430-99-563-7749,..Page	112	8430-99-669-8991, ... Page	94
8430-99-508-3393,..Page	113	8430-99-563-7750,..Page	112	8430-99-669-8992, ... Page	94
8430-99-508-3394-, Page	113	8430-99-563-7751,..Page	112	8430-99-669-8993, ... Page	94
8430-99-508-3395,..Page	113	8430-99-584-6687,....Page	38	8430-99-669-8994, ... Page	94
8430-99-508-3396,..Page	113	8430-99-584-6688,....Page	38	8430-99-669-8995, ... Page	94
8430-99-508-3397,..Page	113	8430-99-584-6689,....Page	38	8430-99-669-9017, . Page	106
8430-99-508-3398,..Page	113	8430-99-584-6690,....Page	38	8430-99-669-9018, . Page	106
8430-99-508-3399,..Page	113	8430-99-584-6691,....Page	38	8430-99-669-9019, . Page	106
8430-99-508-3400,..Page	113	8430-99-584-6692,....Page	38	8430-99-669-9020, . Page	106
8430-99-508-3401,..Page	113	8430-99-584-6693,....Page	38	8430-99-669-9021, . Page	106
8430-99-508-3402,..Page	113	8430-99-617-4406,.....Page	9	8430-99-669-9022, . Page	106
8430-99-508-3403,..Page	113	8430-99-617-4407,.....Page	9	8430-99-669-9023, . Page	106
8430-99-512-2133,.....Page	9	8430-99-617-4408,.....Page	9	8430-99-669-9024, . Page	106
8430-99-512-2141,....Page	15	8430-99-617-4409,.....Page	9	8430-99-669-9025, . Page	106
8430-99-512-2149,....Page	40	8430-99-669-8960,....Page	91	8430-99-669-9026, . Page	106
8430-99-512-2159,....Page	31	8430-99-669-8961,....Page	91	8430-99-669-9027, . Page	106
8430-99-512-2160,....Page	31	8430-99-669-8962,....Page	91	8430-99-670-1154, ... Page	30
8430-99-553-7592,....Page	47	8430-99-669-8963,....Page	91	8430-99-670-1155, ... Page	30
8430-99-553-7593,....Page	47	8430-99-669-8964,....Page	91	8430-99-670-1156, ... Page	30
8430-99-555-6117,....Page	99	8430-99-669-8965,....Page	91	8430-99-670-1157, ... Page	30

Section 2-5, DMC CD

Footwear

8430-99-670-1158,....Page 30	8430-99-731-5986,..Page 118	8430-99-869-6711, ... Page 89
8430-99-670-1159,....Page 30	8430-99-731-5987,..Page 118	8430-99-869-6712, ... Page 89
8430-99-670-1160,....Page 30	8430-99-731-5988,..Page 118	8430-99-869-6713, ... Page 89
8430-99-670-1161,....Page 30	8430-99-755-0664,....Page 22	8430-99-869-6714, ... Page 89
8430-99-670-1162,....Page 30	8430-99-755-0667,....Page 22	8430-99-869-6715, ... Page 89
8430-99-670-1163,....Page 30	8430-99-755-0668,....Page 22	8430-99-869-6716, ... Page 89
8430-99-670-1164,....Page 30	8430-99-755-0669,....Page 22	8430-99-889-0698, ... Page 26
8430-99-670-1165,....Page 30	8430-99-866-9630,....Page 66	8430-99-889-0699, ... Page 26
8430-99-670-1166,....Page 30	8430-99-866-9631,....Page 66	8430-99-889-0700, ... Page 26
8430-99-670-1167,....Page 30	8430-99-869-1170,....Page 88	8430-99-889-0701, ... Page 26
8430-99-670-1168,....Page 30	8430-99-869-1172,....Page 88	8430-99-889-0702, ... Page 26
8430-99-670-1169,....Page 30	8430-99-869-1174,....Page 88	8430-99-889-0703, ... Page 26
8430-99-670-1170,....Page 30	8430-99-869-1176,....Page 88	8430-99-889-0704, ... Page 26
8430-99-670-1171,....Page 30	8430-99-869-1178,....Page 88	8430-99-889-0705, ... Page 26
8430-99-670-1172,....Page 30	8430-99-869-1180,....Page 88	8430-99-889-0706, ... Page 26
8430-99-670-1173,....Page 30	8430-99-869-1182,....Page 88	8430-99-889-0707, ... Page 26
8430-99-670-1174,....Page 30	8430-99-869-1184,....Page 88	8430-99-889-0708, ... Page 26
8430-99-670-1175,....Page 30	8430-99-869-5352,....Page 87	8430-99-889-0709, ... Page 26
8430-99-727-0834,....Page 31	8430-99-869-5353,....Page 87	8430-99-889-0710, ... Page 26
8430-99-727-0835,....Page 31	8430-99-869-5354,....Page 87	8430-99-889-0711, ... Page 26
8430-99-727-0836,....Page 31	8430-99-869-5355,....Page 87	8430-99-889-0712, ... Page 26
8430-99-727-0837,....Page 31	8430-99-869-5356,....Page 87	8430-99-889-0713, ... Page 26
8430-99-727-0838,....Page 31	8430-99-869-5357,....Page 87	8430-99-889-0714, ... Page 26
8430-99-727-0839,....Page 31	8430-99-869-5358,....Page 87	8430-99-889-0715, ... Page 26
8430-99-727-0840,....Page 31	8430-99-869-5359,....Page 87	8430-99-889-0716, ... Page 26
8430-99-727-0841,....Page 31	8430-99-869-5360,....Page 87	8430-99-889-0717, ... Page 26
8430-99-727-0842,....Page 31	8430-99-869-5361,....Page 87	8430-99-889-0718, ... Page 26
8430-99-727-0843,....Page 31	8430-99-869-5362,....Page 87	8430-99-889-0719, ... Page 26
8430-99-727-0847,....Page 31	8430-99-869-5363,....Page 87	8430-99-899-7998, ... Page 65
8430-99-727-0848,....Page 31	8430-99-869-5364,....Page 87	8430-99-899-7999, ... Page 65
8430-99-729-6613,.....Page 5	8430-99-869-5365,....Page 87	8430-99-899-8000, ... Page 65
8430-99-731-0084,....Page 69	8430-99-869-5366,....Page 87	8430-99-899-8001, ... Page 62
8430-99-731-0085,....Page 69	8430-99-869-5367,....Page 87	8430-99-899-8002, ... Page 62
8430-99-731-0088,....Page 69	8430-99-869-5368,....Page 87	8430-99-899-8003, ... Page 62
8430-99-731-0089,....Page 69	8430-99-869-5369,....Page 87	8430-99-899-8004, ... Page 63
8430-99-731-0092,....Page 69	8430-99-869-5370,....Page 87	8430-99-899-8005, ... Page 63
8430-99-731-0093,....Page 69	8430-99-869-5371,....Page 87	8430-99-899-8006, ... Page 63
8430-99-731-5978,..Page 118	8430-99-869-5372,....Page 87	8430-99-899-8007, ... Page 63
8430-99-731-5979,..Page 118	8430-99-869-5373,....Page 87	8430-99-899-8008, ... Page 63
8430-99-731-5980,..Page 118	8430-99-869-5374,....Page 87	8430-99-899-8009, ... Page 63
8430-99-731-5981,..Page 118	8430-99-869-5375,....Page 87	8430-99-927-2391, ... Page 85
8430-99-731-5982,..Page 118	8430-99-869-5376,....Page 87	8430-99-936-3986, ... Page 42
8430-99-731-5983,..Page 118	8430-99-869-5377,....Page 87	8430-99-936-3987, ... Page 42
8430-99-731-5984,..Page 118	8430-99-869-6709,....Page 89	8430-99-936-3988, ... Page 42
8430-99-731-5985,..Page 118	8430-99-869-6710,....Page 89	8430-99-936-3989, ... Page 42

Section 2-5, DMC CD

Footwear

8430-99-975-3089,....Page 66	8430-99-976-7551,..Page 117	8435-99-167-5957, ... Page 19
8430-99-975-3090,....Page 66	8430-99-976-7552,..Page 117	8435-99-167-5958, ... Page 19
8430-99-975-3091,....Page 66	8430-99-976-7555,..Page 117	8435-99-167-5959, ... Page 19
8430-99-975-3092,....Page 66	8430-99-976-7559,..Page 117	8435-99-167-5960, ... Page 19
8430-99-975-3093,....Page 66	8430-99-976-7564,..Page 117	8435-99-167-5961, ... Page 19
8430-99-975-3094,....Page 66	8430-99-976-7568,..Page 117	8435-99-167-5962, ... Page 19
8430-99-975-3095,....Page 66	8430-99-976-7571,..Page 117	8435-99-167-5963, ... Page 19
8430-99-975-3096,....Page 66	8430-99-976-7572,..Page 117	8435-99-167-5964, ... Page 19
8430-99-975-3097,....Page 66	8430-99-978-4525,....Page 69	8435-99-167-5965, ... Page 19
8430-99-975-3098,....Page 66	8430-99-978-4526,....Page 69	8435-99-167-5966, ... Page 19
8430-99-975-3099,....Page 66	8430-99-978-4529,....Page 69	8435-99-167-5967, ... Page 19
8430-99-975-3100,....Page 66	8430-99-978-4530,....Page 69	8435-99-217-0350, ... Page 20
8430-99-975-3101,....Page 66	8430-99-978-4533,....Page 69	8435-99-217-0351, ... Page 20
8430-99-975-3102,....Page 66	8430-99-978-4534,....Page 69	8435-99-217-0352, ... Page 20
8430-99-975-3123,....Page 67	8430-99-978-4537,....Page 69	8435-99-217-0353, ... Page 20
8430-99-975-3124,....Page 67	8430-99-978-4538,....Page 69	8435-99-217-0354, ... Page 20
8430-99-975-3126,....Page 67	8430-99-978-4541,....Page 69	8435-99-217-0355, ... Page 20
8430-99-975-3127,....Page 67	8430-99-978-4542,....Page 69	8435-99-217-0356, ... Page 20
8430-99-975-3129,....Page 67	8430-99-978-4545,....Page 69	8435-99-217-0357, ... Page 20
8430-99-975-3130,....Page 67	8430-99-978-4546,....Page 69	8435-99-217-0358, ... Page 20
8430-99-975-3132,....Page 67	8430-99-978-4549,....Page 69	8435-99-217-0359, ... Page 20
8430-99-975-3133,....Page 67	8430-99-978-4550,....Page 69	8435-99-217-0360, ... Page 20
8430-99-975-3134,....Page 67	8430-99-978-4553,....Page 69	8435-99-217-0361, ... Page 20
8430-99-975-3135,....Page 67	8430-99-978-4554,....Page 69	8435-99-217-0362, ... Page 20
8430-99-975-3136,....Page 67	8435-99-152-9933,....Page 45	8435-99-217-0363, ... Page 20
8430-99-975-3137,....Page 67	8435-99-152-9937,....Page 45	8435-99-241-7485, . Page 116
8430-99-975-3138,....Page 67	8435-99-152-9938,....Page 45	8435-99-241-7486, . Page 116
8430-99-975-3139,....Page 67	8435-99-152-9940,....Page 45	8435-99-241-7489, . Page 116
8430-99-975-3141,....Page 67	8435-99-157-8180,....Page 33	8435-99-241-7490, . Page 116
8430-99-975-3142,....Page 67	8435-99-157-8181,....Page 33	8435-99-241-7493, . Page 116
8430-99-975-3144,....Page 67	8435-99-157-8182,....Page 33	8435-99-241-7494, . Page 116
8430-99-975-3145,....Page 67	8435-99-157-8183,....Page 33	8435-99-241-7497, . Page 116
8430-99-975-3600,....Page 64	8435-99-157-8184,....Page 33	8435-99-241-7501, . Page 116
8430-99-975-3601,....Page 64	8435-99-157-8185,....Page 33	8435-99-241-7505, . Page 116
8430-99-975-3602,....Page 65	8435-99-157-8186,....Page 33	8435-99-241-7506, . Page 116
8430-99-975-3603,....Page 65	8435-99-157-8187,....Page 33	8435-99-241-7509, . Page 116
8430-99-975-3604,....Page 65	8435-99-157-8188,....Page 33	8435-99-241-7510, . Page 116
8430-99-976-7531,..Page 117	8435-99-157-8189,....Page 33	8435-99-255-3792, ... Page 12
8430-99-976-7536,..Page 117	8435-99-157-8190,....Page 33	8435-99-255-3794, ... Page 12
8430-99-976-7539,..Page 117	8435-99-157-8191,....Page 33	8435-99-255-3799, ... Page 12
8430-99-976-7540,..Page 117	8435-99-157-8192,....Page 33	8435-99-255-3804, ... Page 12
8430-99-976-7543,..Page 117	8435-99-157-8193,....Page 33	8435-99-297-6319, ... Page 79
8430-99-976-7544,..Page 117	8435-99-167-5954,....Page 19	8435-99-297-6320, ... Page 79
8430-99-976-7547,..Page 117	8435-99-167-5955,....Page 19	8435-99-297-6321, ... Page 79
8430-99-976-7548,..Page 117	8435-99-167-5956,....Page 19	8435-99-297-6322, ... Page 79

Section 2-5, DMC CD

Footwear

8435-99-297-6323,....Page 79	8435-99-332-6168,....Page 34	8435-99-407-3916, . Page 102
8435-99-297-6324,....Page 79	8435-99-332-6169,....Page 34	8435-99-407-3917, . Page 102
8435-99-297-6325,....Page 79	8435-99-332-6170,....Page 34	8435-99-407-3918, . Page 102
8435-99-297-6326,....Page 79	8435-99-332-6171,....Page 34	8435-99-407-3919, . Page 102
8435-99-297-6327,....Page 79	8435-99-332-6172,....Page 34	8435-99-407-3920, . Page 102
8435-99-297-6328,....Page 79	8435-99-332-6173,....Page 34	8435-99-407-3921, . Page 103
8435-99-297-6329,....Page 79	8435-99-332-6174,....Page 34	8435-99-407-3922, . Page 103
8435-99-297-6330,....Page 79	8435-99-332-6175,....Page 34	8435-99-407-3923-, Page 103
8435-99-297-6331,....Page 79	8435-99-332-6176,....Page 34	8435-99-407-3924, . Page 103
8435-99-297-6332,....Page 79	8435-99-332-6177,....Page 34	8435-99-407-3925-, Page 103
8435-99-297-6333,....Page 79	8435-99-332-6178,....Page 34	8435-99-407-3926, . Page 103
8435-99-297-6334,....Page 79	8435-99-344-8628,....Page 21	8435-99-407-3927, . Page 104
8435-99-297-6335,....Page 79	8435-99-344-8629,....Page 21	8435-99-407-3928, . Page 104
8435-99-297-6336,....Page 79	8435-99-371-3146,....Page 13	8435-99-407-3929-, Page 104
8435-99-297-6337,....Page 79	8435-99-371-3147,....Page 13	8435-99-407-3930, . Page 104
8435-99-297-6338,....Page 79	8435-99-371-3148,....Page 13	8435-99-407-3931-, Page 104
8435-99-297-6339,....Page 79	8435-99-371-3149,....Page 13	8435-99-407-3932, . Page 104
8435-99-297-6340,....Page 79	8435-99-371-3150,....Page 13	8435-99-407-3933, . Page 104
8435-99-297-6341,....Page 79	8435-99-371-3151,....Page 13	8435-99-407-3934, . Page 104
8435-99-297-6342,....Page 79	8435-99-371-3152,....Page 13	8435-99-407-3935-, Page 104
8435-99-297-6343,....Page 79	8435-99-371-3153,....Page 13	8435-99-407-3936, . Page 104
8435-99-297-6344,....Page 79	8435-99-371-3154,....Page 13	8435-99-407-3937-, Page 104
8435-99-297-6345,....Page 79	8435-99-371-3155,....Page 13	8435-99-407-3938, . Page 104
8435-99-297-6346,....Page 79	8435-99-371-3156,....Page 13	8435-99-407-3939, . Page 105
8435-99-297-6347,....Page 79	8435-99-371-3157,....Page 13	8435-99-407-3940, . Page 105
8435-99-297-6348,....Page 79	8435-99-371-3158,....Page 13	8435-99-407-3941-, Page 105
8435-99-297-6383,....Page 84	8435-99-371-3159,....Page 13	8435-99-407-3942, . Page 105
8435-99-297-6384,....Page 84	8435-99-371-3182,....Page 11	8435-99-407-3943-, Page 105
8435-99-297-6385,....Page 84	8435-99-371-3183,....Page 11	8435-99-407-3944, . Page 105
8435-99-297-6386,....Page 84	8435-99-371-3184,....Page 11	8435-99-584-6695, ... Page 43
8435-99-297-6387,....Page 84	8435-99-371-3185,....Page 11	8435-99-584-6701, ... Page 43
8435-99-297-6388,....Page 84	8435-99-371-3186,....Page 11	8435-99-584-6703, ... Page 43
8435-99-297-6389,....Page 84	8435-99-371-3187,....Page 11	8435-99-584-6705, ... Page 43
8435-99-297-6390,....Page 84	8435-99-371-3188,....Page 11	8435-99-584-6706, ... Page 43
8435-99-297-6391,....Page 84	8435-99-371-3189,....Page 11	8435-99-584-6707, ... Page 43
8435-99-297-6392,....Page 84	8435-99-371-3190,....Page 11	8435-99-617-4413, ... Page 14
8435-99-297-6393,....Page 84	8435-99-371-3191,....Page 11	8435-99-617-4415, ... Page 14
8435-99-297-6394,....Page 84	8435-99-371-3192,....Page 11	8435-99-617-4418, ... Page 14
8435-99-297-6395,....Page 84	8435-99-371-3193,....Page 11	8435-99-617-4419, ... Page 14
8435-99-297-6396,....Page 84	8435-99-371-3194,....Page 11	8435-99-617-4420, ... Page 14
8435-99-297-6397,....Page 84	8435-99-371-3195,....Page 11	8435-99-617-4421, ... Page 14
8435-99-297-6398,....Page 84	8435-99-398-2395,....Page 18	8435-99-617-4422, ... Page 14
8435-99-332-6165,....Page 34	8435-99-398-2396,....Page 18	8435-99-670-1176, ... Page 35
8435-99-332-6166,....Page 34	8435-99-398-2404,....Page 18	8435-99-670-1177, ... Page 35
8435-99-332-6167,....Page 34	8435-99-407-3915, ..Page 102	8435-99-670-1178, ... Page 35

Section 2-5, DMC CD

Footwear

8435-99-977-2123,....Page 77	8435-99-978-7352,....Page 80	8435-99-978-7380, ... Page 81
8435-99-977-2124,....Page 77	8435-99-978-7353,....Page 80	8435-99-978-7381, ... Page 81
8435-99-977-2125,....Page 77	8435-99-978-7354,....Page 80	8435-99-978-7382, ... Page 81
8435-99-977-2126,....Page 77	8435-99-978-7355,....Page 80	8435-99-978-7383, ... Page 81
8435-99-977-2127,....Page 77	8435-99-978-7356,....Page 80	8435-99-978-7384, ... Page 81
8435-99-977-2128,....Page 77	8435-99-978-7357,....Page 80	8435-99-978-7385, ... Page 81
8435-99-977-2129,....Page 78	8435-99-978-7358,....Page 80	8435-99-978-7386, ... Page 81
8435-99-977-2130,....Page 78	8435-99-978-7359,....Page 80	8440-99-731-4226, . Page 123
8435-99-977-2131,....Page 78	8435-99-978-7360,....Page 80	8440-99-731-4227, . Page 123
8435-99-977-2132,....Page 78	8435-99-978-7361,....Page 80	8440-99-731-4228, . Page 123
8435-99-977-2133,....Page 78	8435-99-978-7362,....Page 80	8440-99-908-8238, . Page 125
8435-99-977-2134,....Page 78	8435-99-978-7363,....Page 80	8440-99-908-8239, . Page 125
8435-99-977-2135,....Page 78	8435-99-978-7364,....Page 80	8440-99-908-8240, . Page 125
8435-99-977-2136,....Page 78	8435-99-978-7365,....Page 80	8440-99-908-8241, . Page 125
8435-99-977-2137,....Page 78	8435-99-978-7366,....Page 80	8440-99-908-8242, . Page 125
8435-99-977-2138,....Page 78	8435-99-978-7367,....Page 80	8440-99-908-8243, . Page 125
8435-99-977-2139,....Page 78	8435-99-978-7368,....Page 80	8440-99-908-8250, . Page 123
8435-99-977-2140,....Page 78	8435-99-978-7369,....Page 81	8440-99-908-8251, . Page 123
8435-99-977-2141,....Page 78	8435-99-978-7370,....Page 81	8440-99-908-8252, . Page 123
8435-99-977-2142,....Page 78	8435-99-978-7371,....Page 81	8440-99-908-8253, . Page 124
8435-99-977-2143,....Page 78	8435-99-978-7372,....Page 81	8440-99-908-8254, . Page 124
8435-99-978-7345,....Page 80	8435-99-978-7373,....Page 81	8440-99-908-8255, . Page 124
8435-99-978-7346,....Page 80	8435-99-978-7374,....Page 81	8440-99-908-8256, . Page 124
8435-99-978-7347,....Page 80	8435-99-978-7375,....Page 81	8440-99-908-8257, . Page 124
8435-99-978-7348,....Page 80	8435-99-978-7376,....Page 81	8440-99-908-8258, . Page 124
8435-99-978-7349,....Page 80	8435-99-978-7377,....Page 81	8440-99-908-8259, . Page 126
8435-99-978-7350,....Page 80	8435-99-978-7378,....Page 81	8440-99-908-8260, . Page 126
8435-99-978-7351,....Page 80	8435-99-978-7379,....Page 81	8440-99-908-8261, . Page 126

Contents

