



Department
of Health &
Social Care

West Midlands: lower tier local authority watchlist – epidemiological charts

Produced 28 December 2020

NOTES

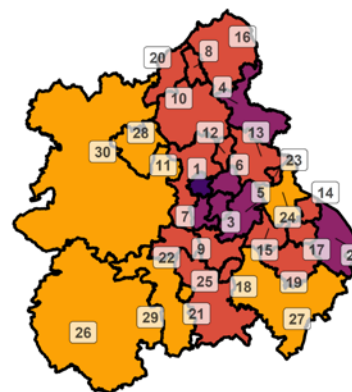
- This data is provided by Public Health England for the purpose of monitoring and supporting the management of Covid-19 infections in Local Authorities.
- The reports are produced using 2019 ONS population data
- If you would like to know the weekly trend for the case rate charts and persons tested chart please see Lower-tier local authority watchlist.

Weekly case rate per 100,000 population by local authority: 17 Dec to 23 Dec 2020

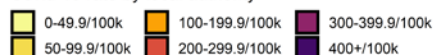
West Midlands
COVID-19 cases: 17 Dec to 23 Dec 2020
 Weekly case rates per 100,000 population by local authority

Rank	Local Authority	Case Rate (per 100,000)	Number of cases (1 week)
1	Wolverhampton	418.8	1103
2	Rugby	365.4	398
3	Sandwell	340.4	1118
4	East Staffordshire	334.9	401
5	Birmingham	321.1	3666
6	Walsall	307.9	879
7	Dudley	303.5	976
8	Stoke-on-Trent	295.7	758
9	Bromsgrove	286.3	286
10	Stafford	281.9	387
11	South Staffordshire	281.0	316
12	Cannock Chase	275.9	278
13	Lichfield	269.2	282
14	Nuneaton and Bedworth	267.2	347
15	Solihull	259.7	562

Rank	Local Authority	Case Rate (per 100,000)	Number of cases (1 week)
16	Staffordshire Moorlands	259.1	255
17	Coventry	256.8	954
18	Redditch	236.9	202
19	Warwick	235.8	339
20	Newcastle-under-Lyme	228.7	296
21	Wychavon	224.8	291
22	Wyre Forest	215.2	218
23	Tamworth	213.8	164
24	North Warwickshire	199.2	130
25	Worcester	198.6	201
26	Herefordshire, County of	198.1	382
27	Stratford-on-Avon	182.2	237
28	Telford and Wrekin	167.4	301
29	Malvern Hills	130.9	103
30	Shropshire	104.0	336

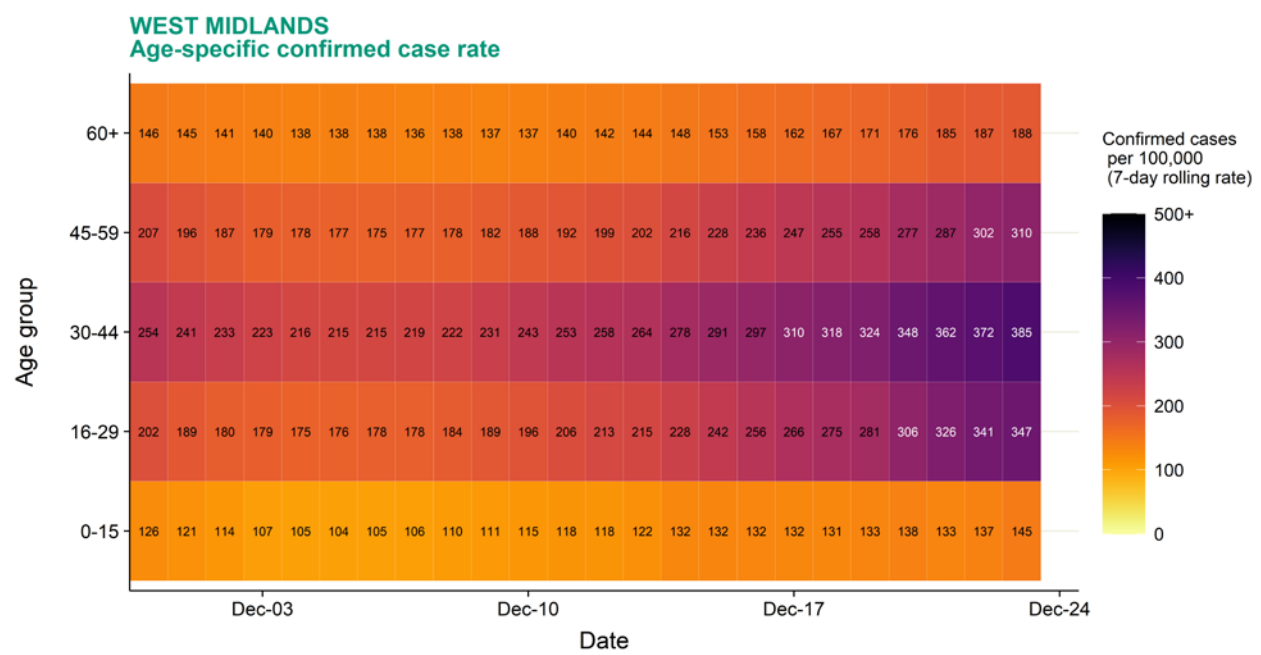


Covid-19 rate by local authority



Data from SGSS; Pillar 1 and 2 testing. Figure by Outbreak Surveillance Team, Public Health England.
 Contains National Statistics data including 2019 population estimates Â© Crown copyright and database right 2020

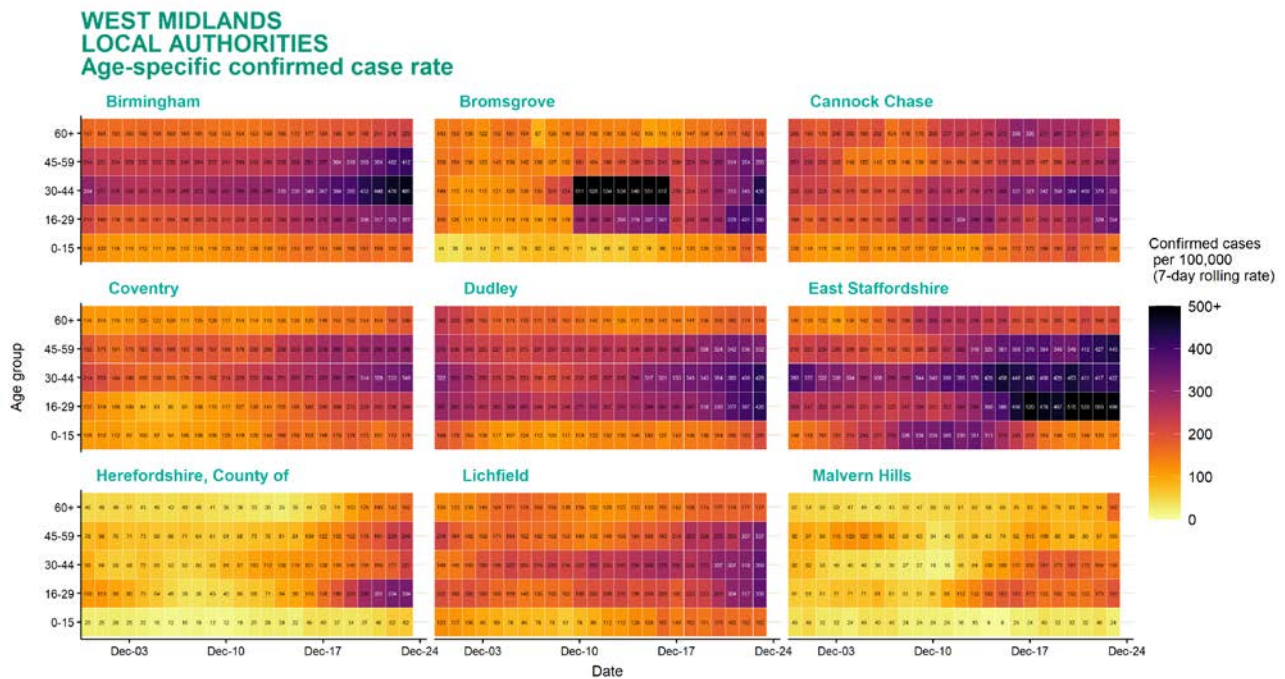
Age-stratified heatmap of weekly case rate for West Midlands : 30 Nov to 23 Dec 2020



Source: Case data from SGSS. Produced by Outbreak Surveillance Team, PHE

Contains National Statistics data Â© Crown copyright and database right 2020

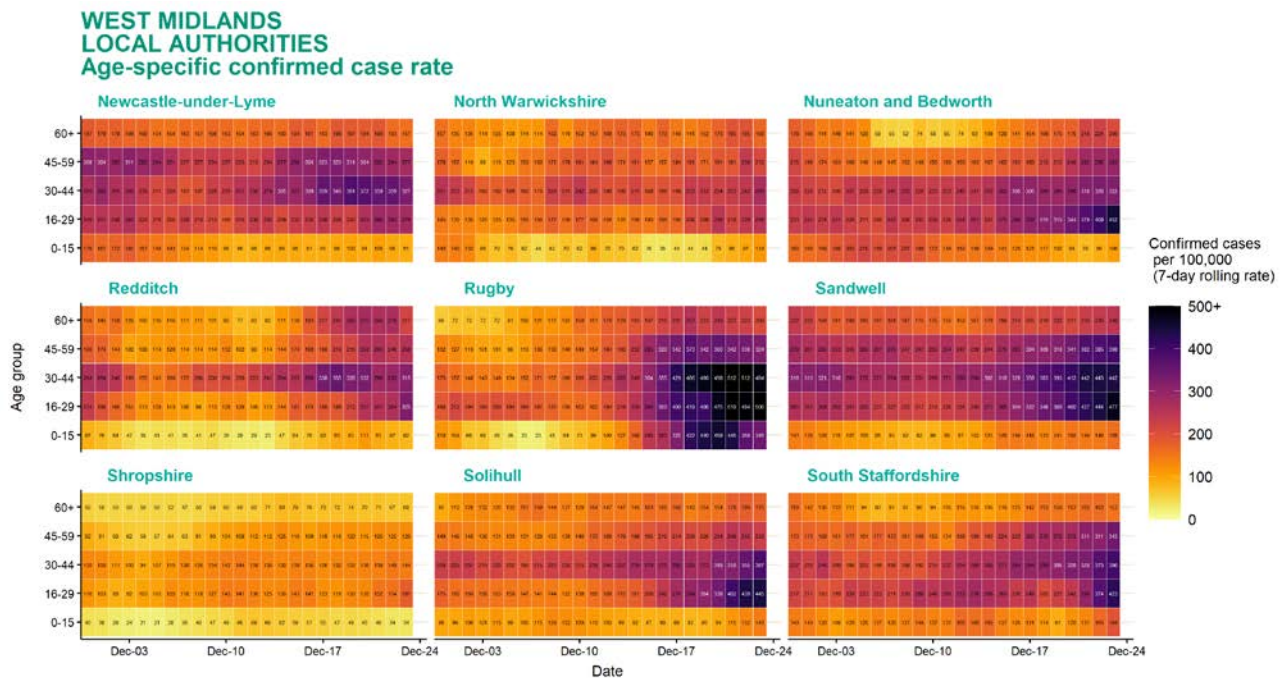
Age-stratified heatmap of weekly case rate by local authority for West Midlands : 30 Nov to 23 Dec 2020



Source: Case data from SGSS. Produced by Outbreak Surveillance Team, PHE

Contains National Statistics data Â© Crown copyright and database right 2020

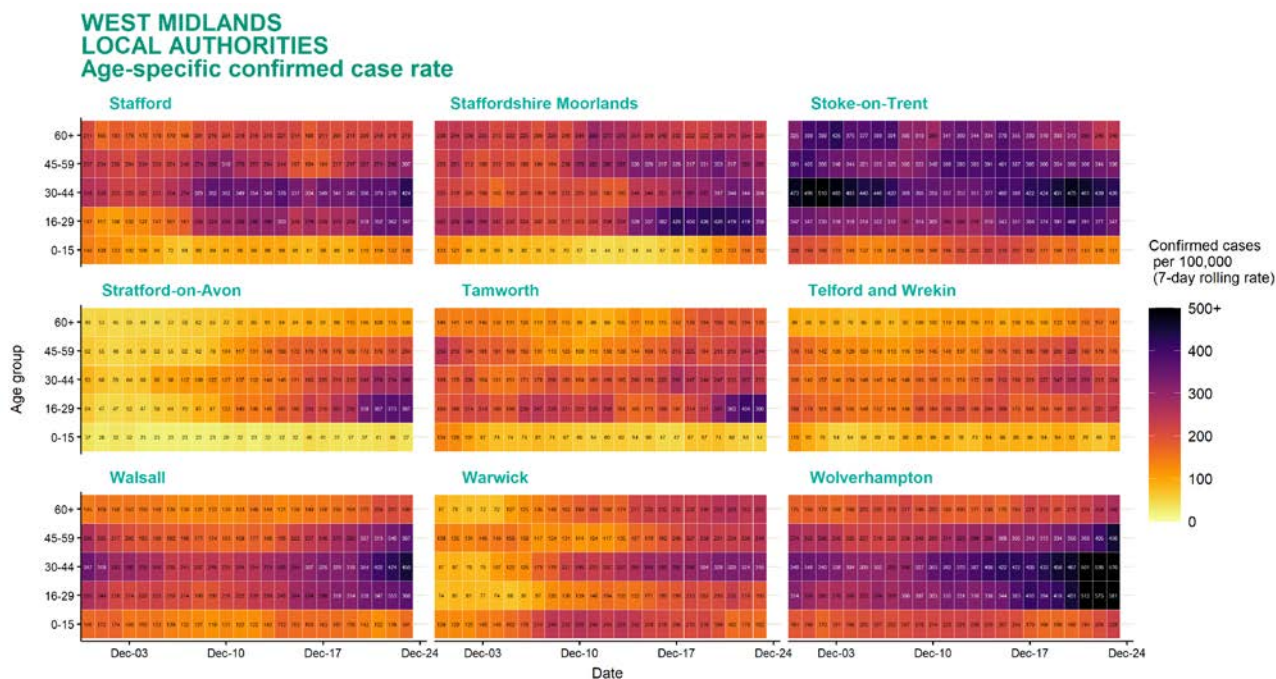
Age-stratified heatmap of weekly case rate by local authority for West Midlands : 30 Nov to 23 Dec 2020



Source: Case data from SGSS. Produced by Outbreak Surveillance Team, PHE

Contains National Statistics data Â© Crown copyright and database right 2020

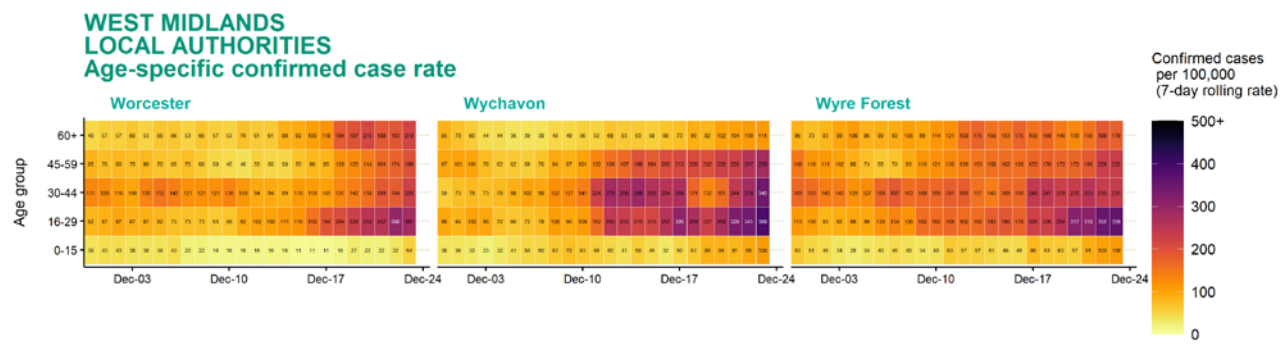
Age-stratified heatmap of weekly case rate by local authority for West Midlands : 30 Nov to 23 Dec 2020



Source: Case data from SGSS. Produced by Outbreak Surveillance Team, PHE

Contains National Statistics data Â© Crown copyright and database right 2020

Age-stratified heatmap of weekly case rate by local authority for West Midlands : 30 Nov to 23 Dec 2020

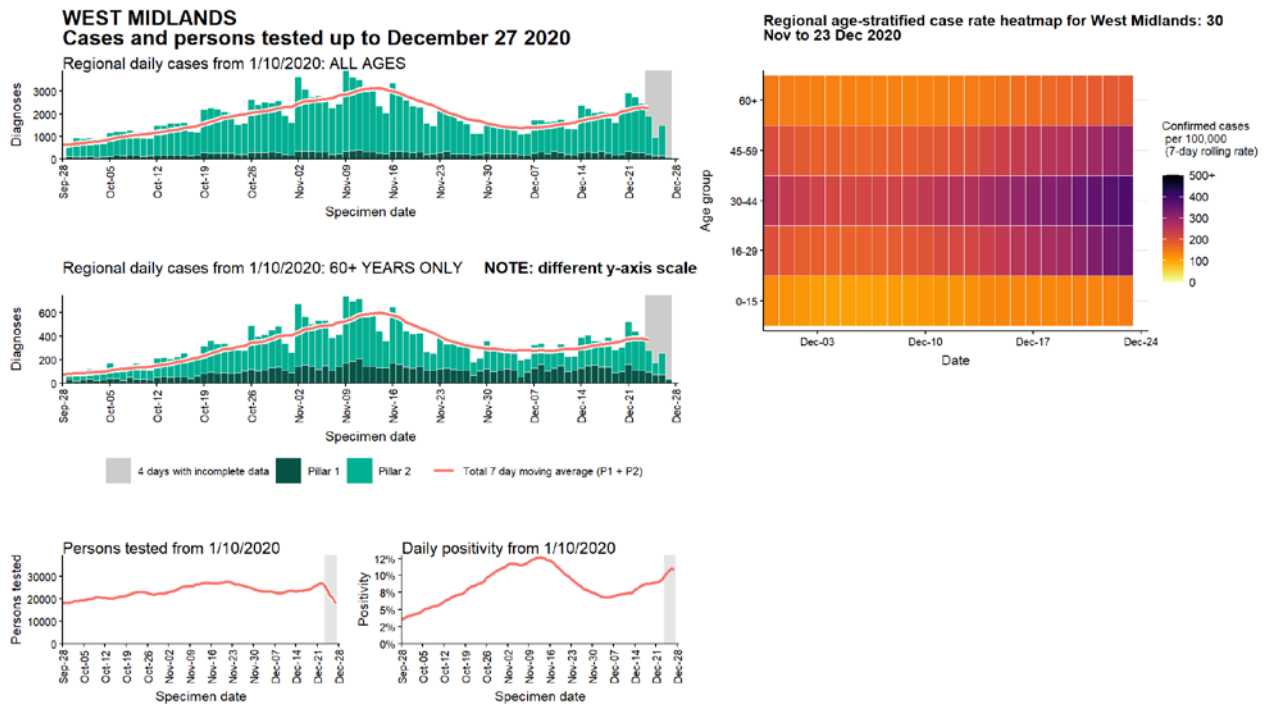


Date

Source: Case data from SGSS. Produced by Outbreak Surveillance Team, PHE

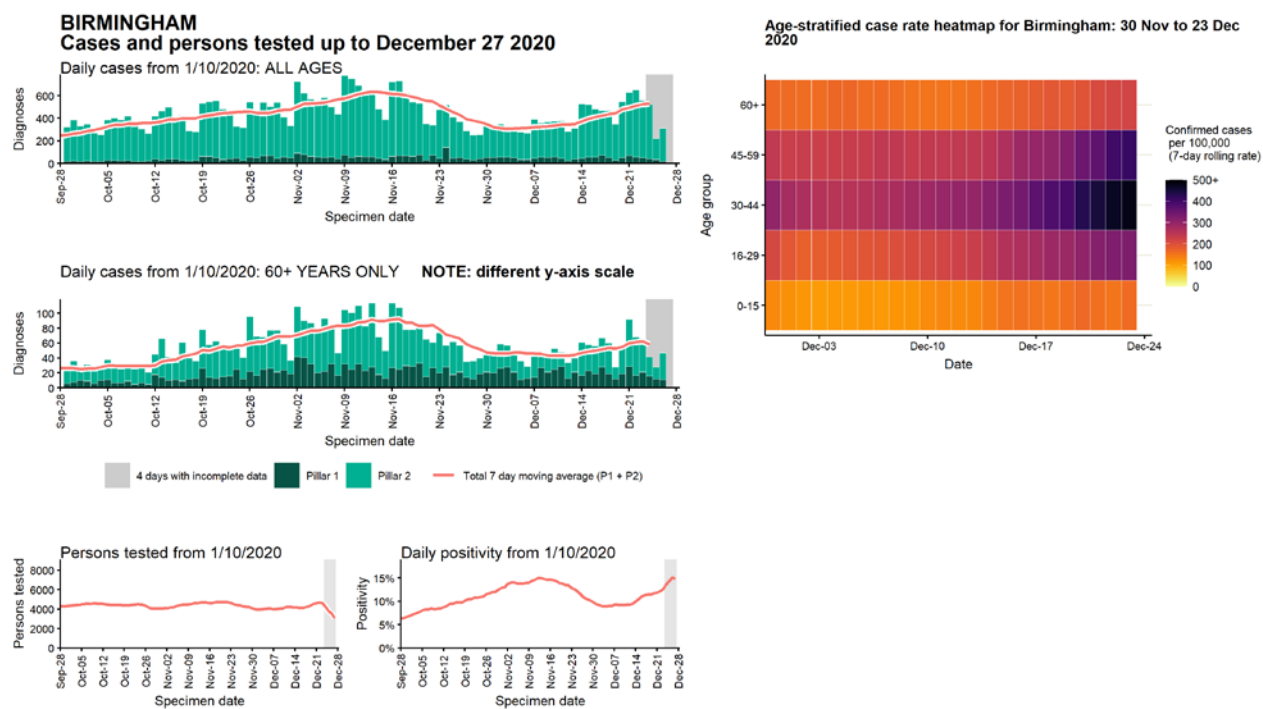
Contains National Statistics data Â© Crown copyright and database right 2020

Regional case numbers, testing numbers and positivity, West Midlands : 01 Sep to 27 Dec 2020



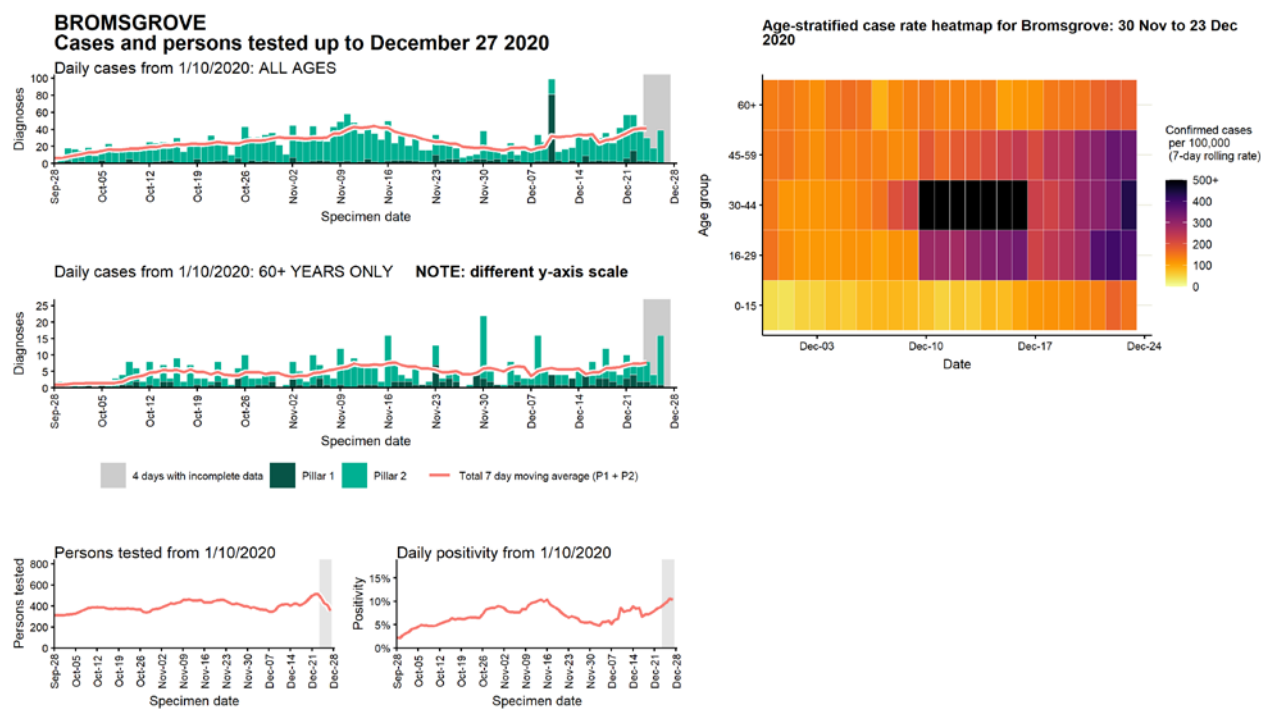
Data from SGSS. Produced by Outbreak Surveillance Team, PHE

Case numbers, testing numbers and positivity, Birmingham : 01 Sep to 27 Dec 2020



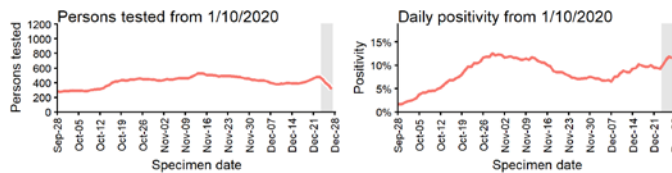
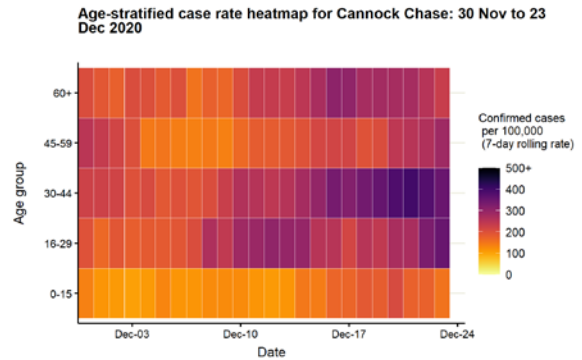
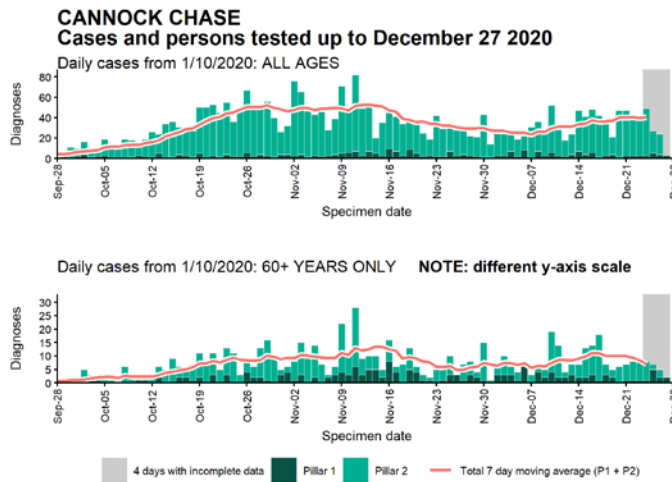
Data from SGSS. Produced by Outbreak Surveillance Team, PHE

Case numbers, testing numbers and positivity, Bromsgrove : 01 Sep to 27 Dec 2020



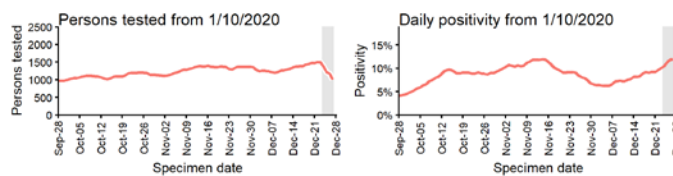
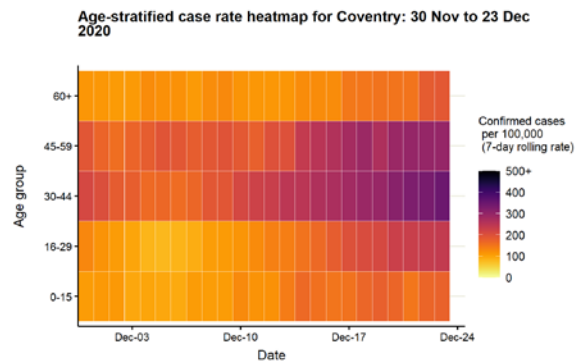
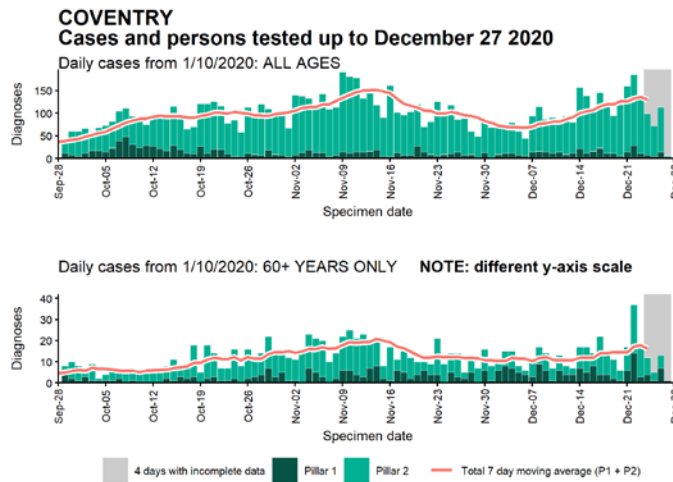
Data from SGSS. Produced by Outbreak Surveillance Team, PHE

Case numbers, testing numbers and positivity, Cannock Chase : 01 Sep to 27 Dec 2020



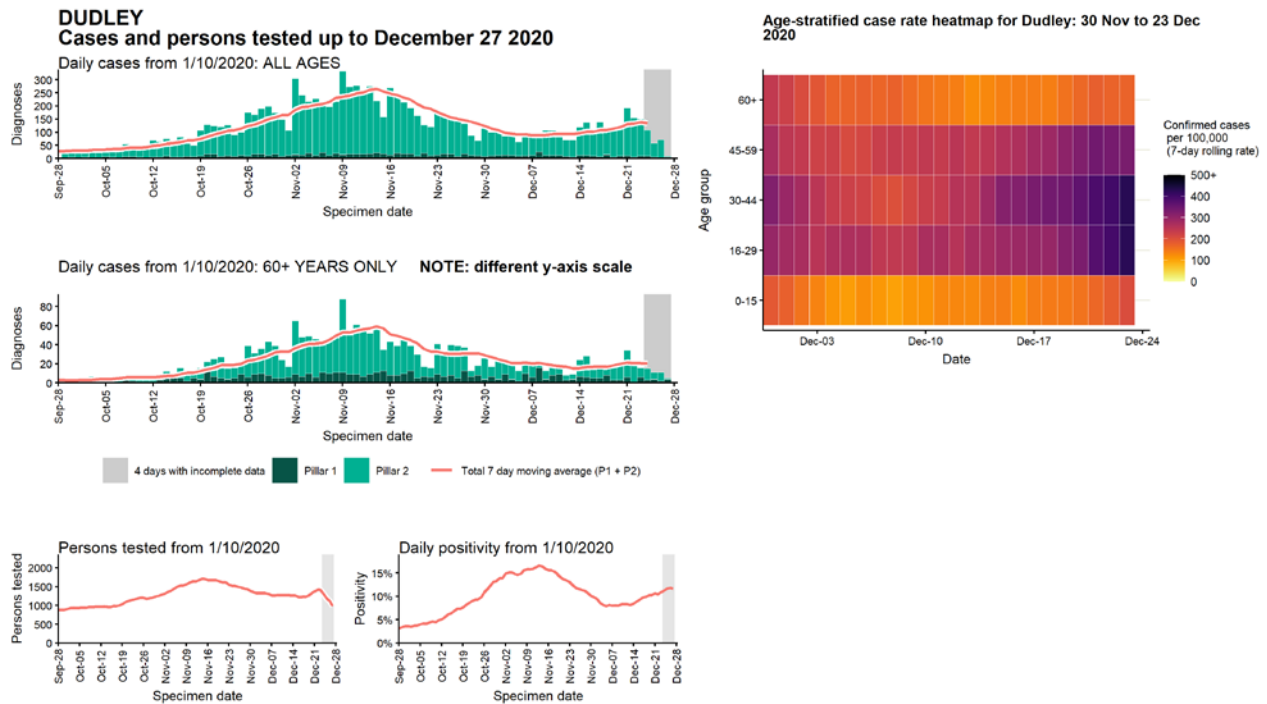
Data from SGSS. Produced by Outbreak Surveillance Team, PHE

Case numbers, testing numbers and positivity, Coventry : 01 Sep to 27 Dec 2020



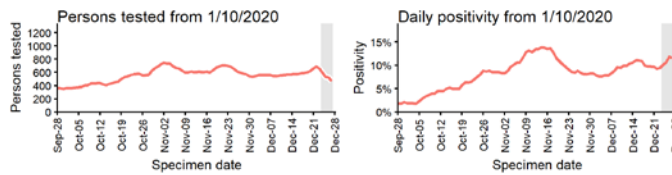
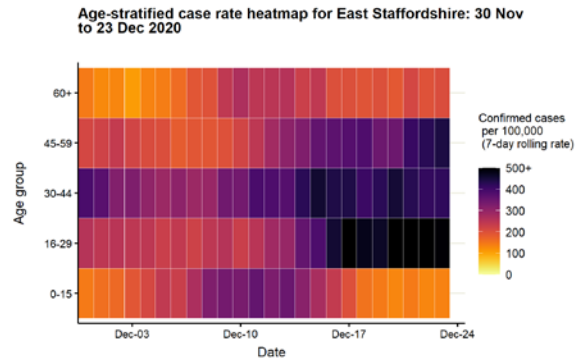
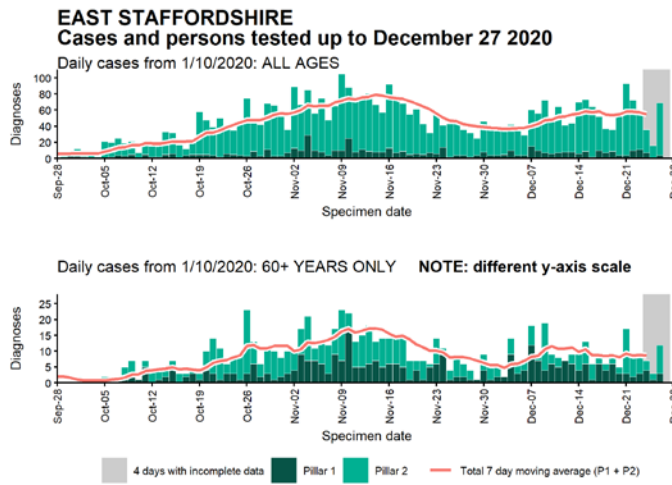
Data from SGSS. Produced by Outbreak Surveillance Team, PHE

Case numbers, testing numbers and positivity, Dudley : 01 Sep to 27 Dec 2020



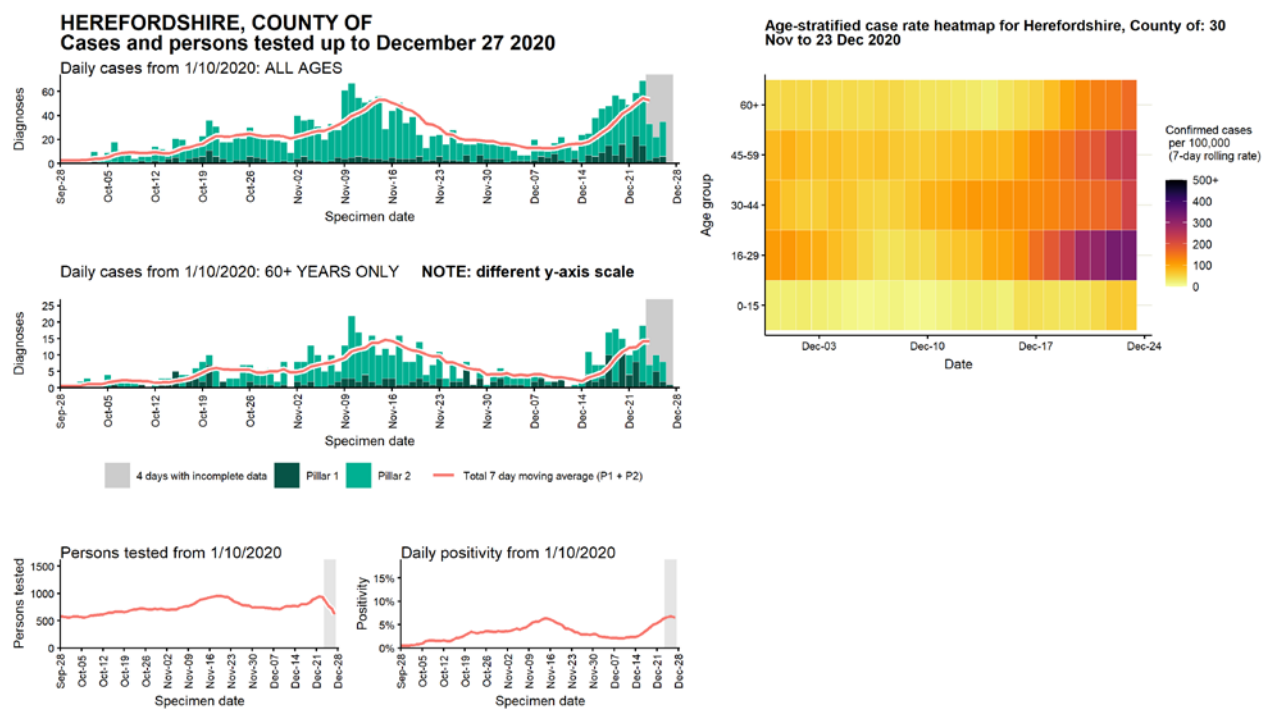
Data from SGSS. Produced by Outbreak Surveillance Team, PHE

Case numbers, testing numbers and positivity, East Staffordshire : 01 Sep to 27 Dec 2020



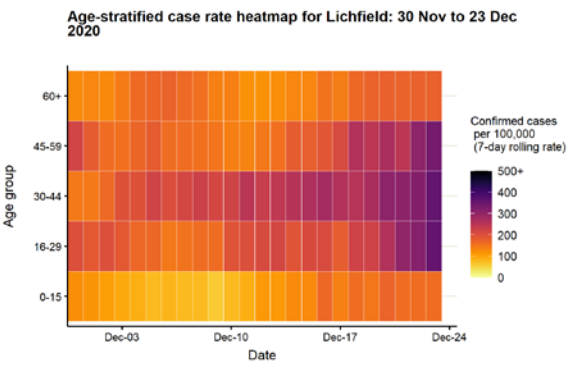
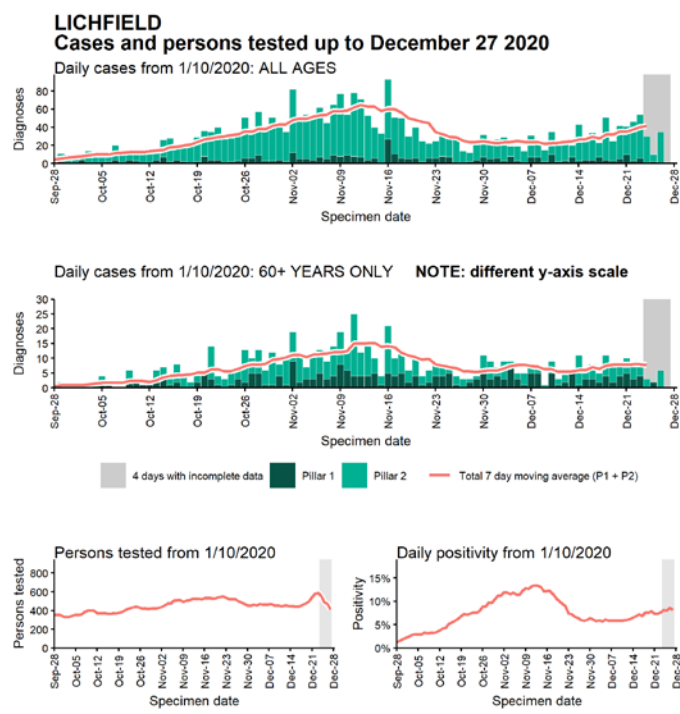
Data from SGSS. Produced by Outbreak Surveillance Team, PHE

Case numbers, testing numbers and positivity, Herefordshire, County of : 01 Sep to 27 Dec 2020



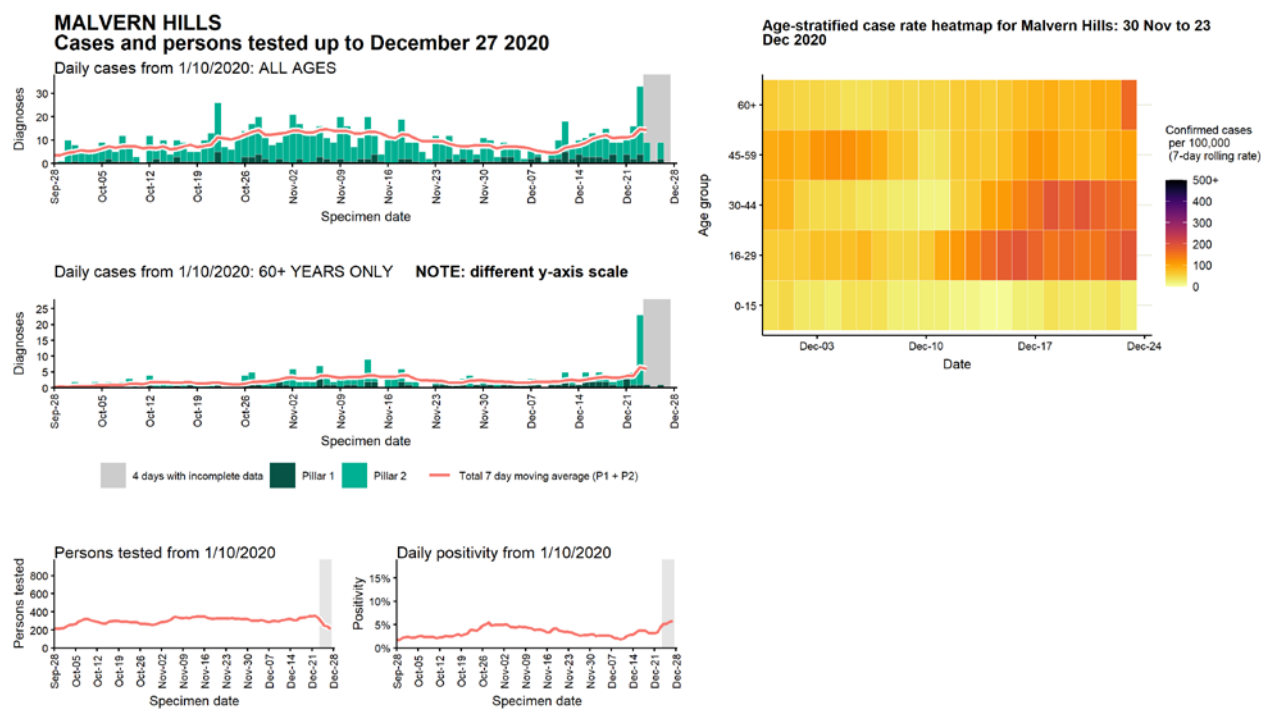
Data from SGSS. Produced by Outbreak Surveillance Team, PHE

Case numbers, testing numbers and positivity, Lichfield : 01 Sep to 27 Dec 2020



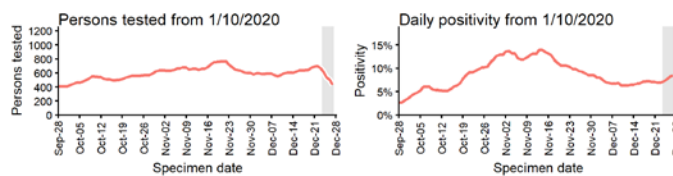
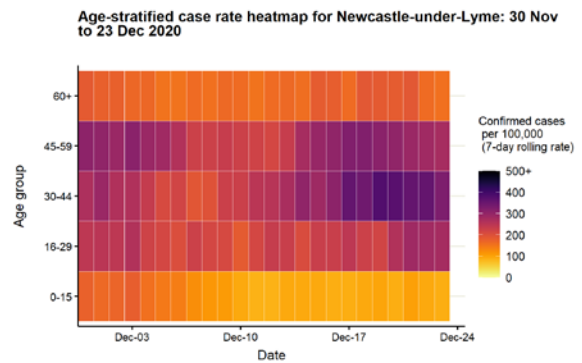
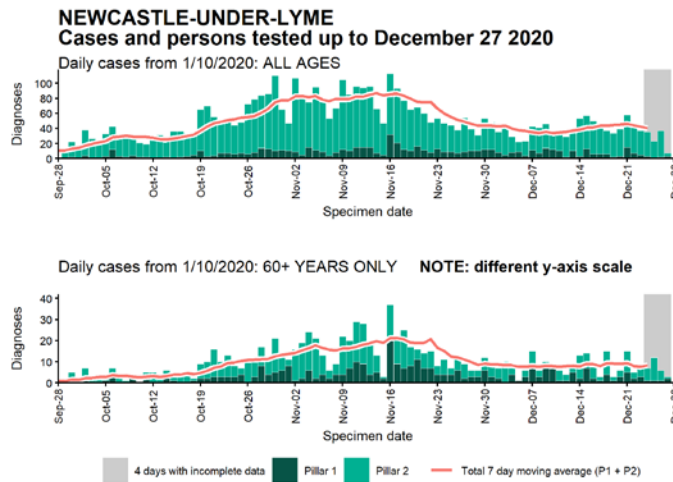
Data from SGSS. Produced by Outbreak Surveillance Team, PHE

Case numbers, testing numbers and positivity, Malvern Hills : 01 Sep to 27 Dec 2020



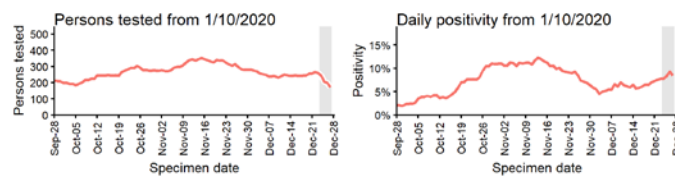
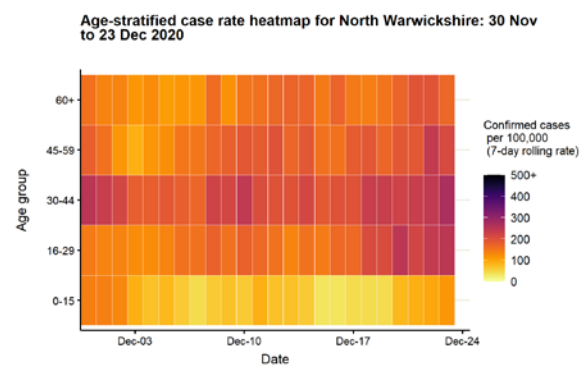
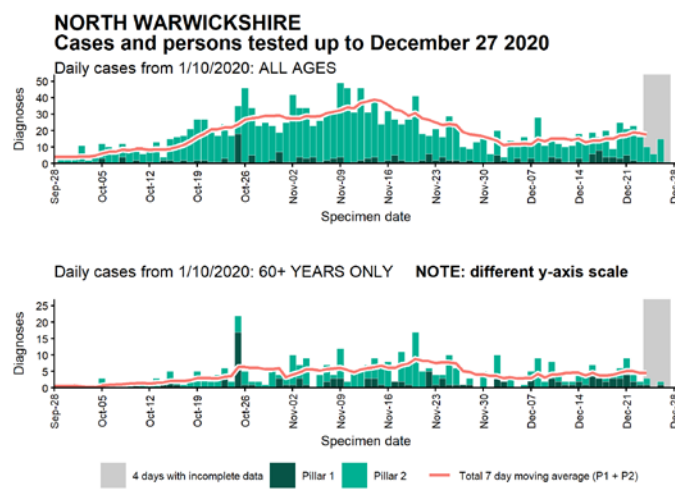
Data from SGSS. Produced by Outbreak Surveillance Team, PHE

Case numbers, testing numbers and positivity, Newcastle-under-Lyme : 01 Sep to 27 Dec 2020



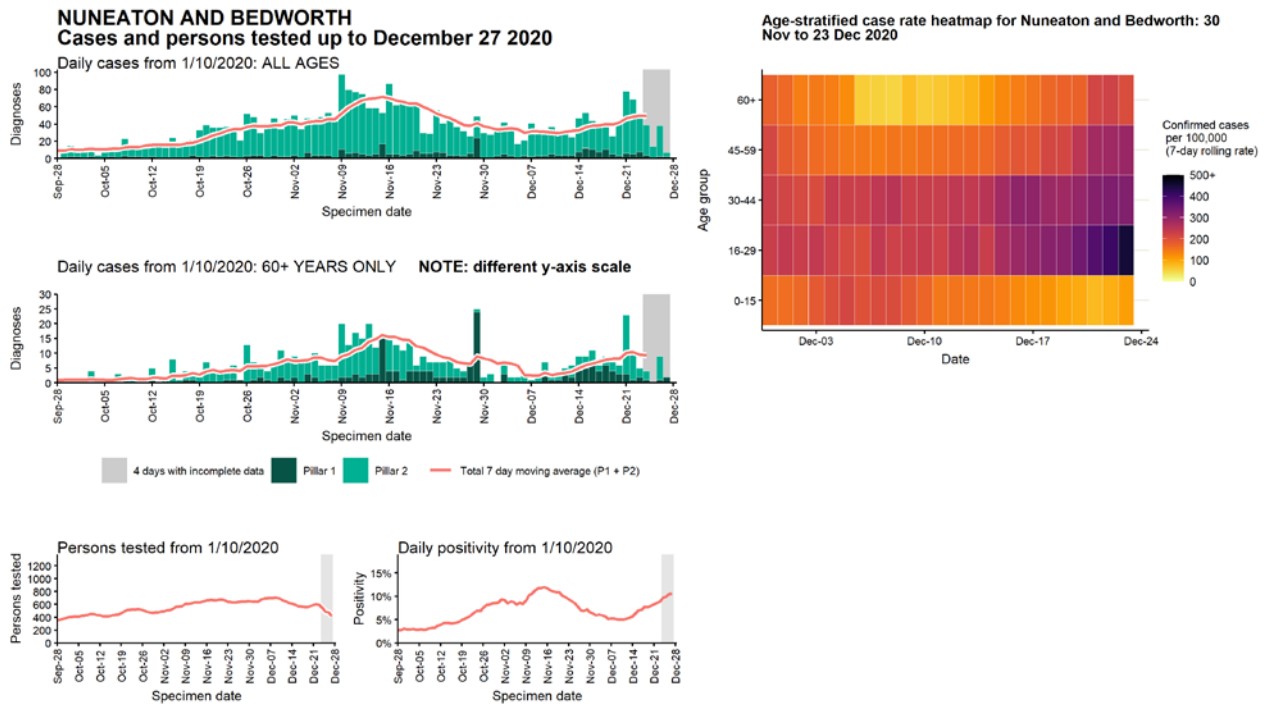
Data from SGSS. Produced by Outbreak Surveillance Team, PHE

Case numbers, testing numbers and positivity, North Warwickshire :
01 Sep to 27 Dec 2020



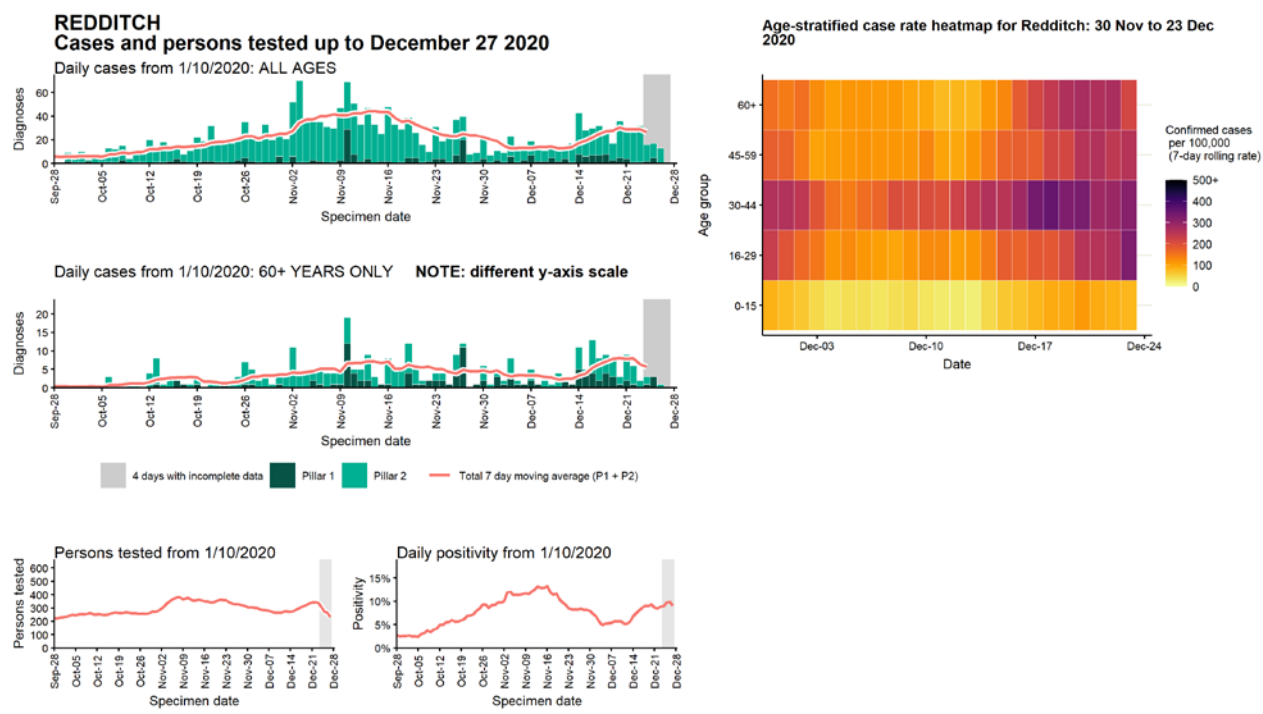
Data from SGSS. Produced by Outbreak Surveillance Team, PHE

Case numbers, testing numbers and positivity, Nuneaton and Bedworth : 01 Sep to 27 Dec 2020

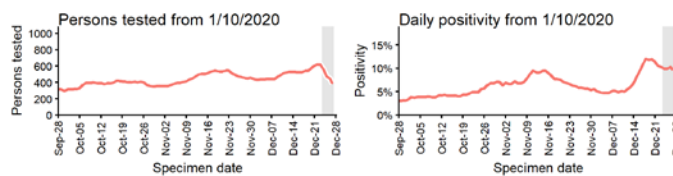
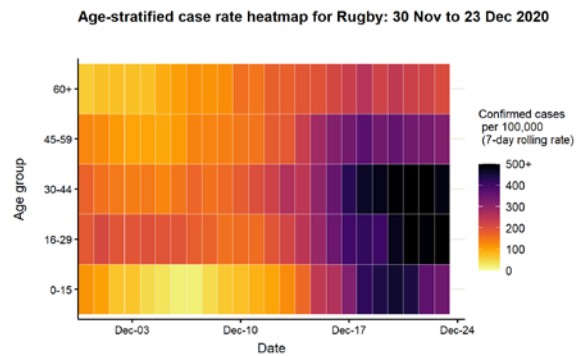
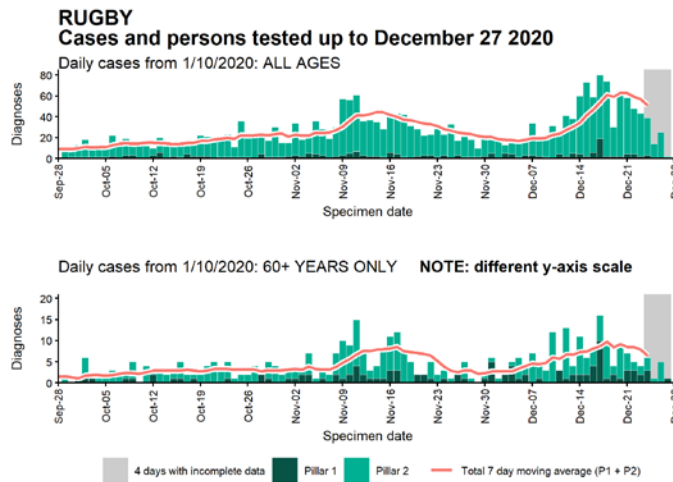


Data from SGSS. Produced by Outbreak Surveillance Team, PHE

Case numbers, testing numbers and positivity, Redditch : 01 Sep to 27 Dec 2020

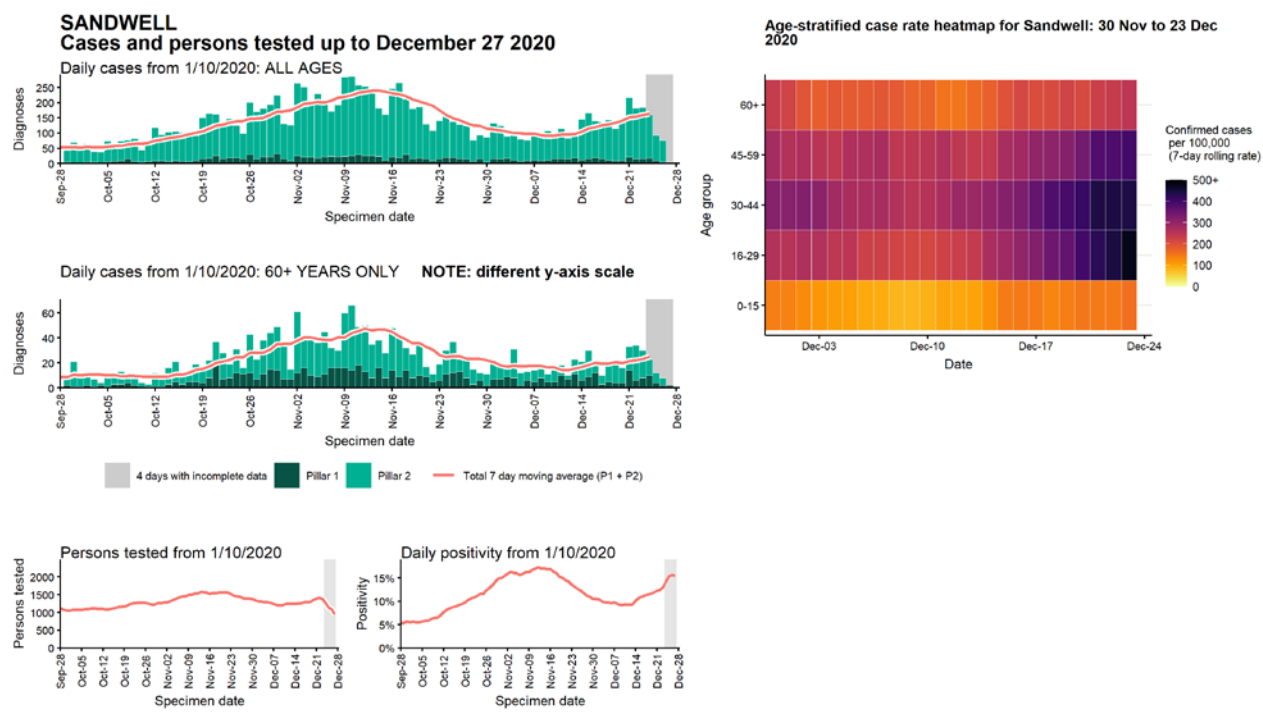


Case numbers, testing numbers and positivity, Rugby : 01 Sep to 27 Dec 2020



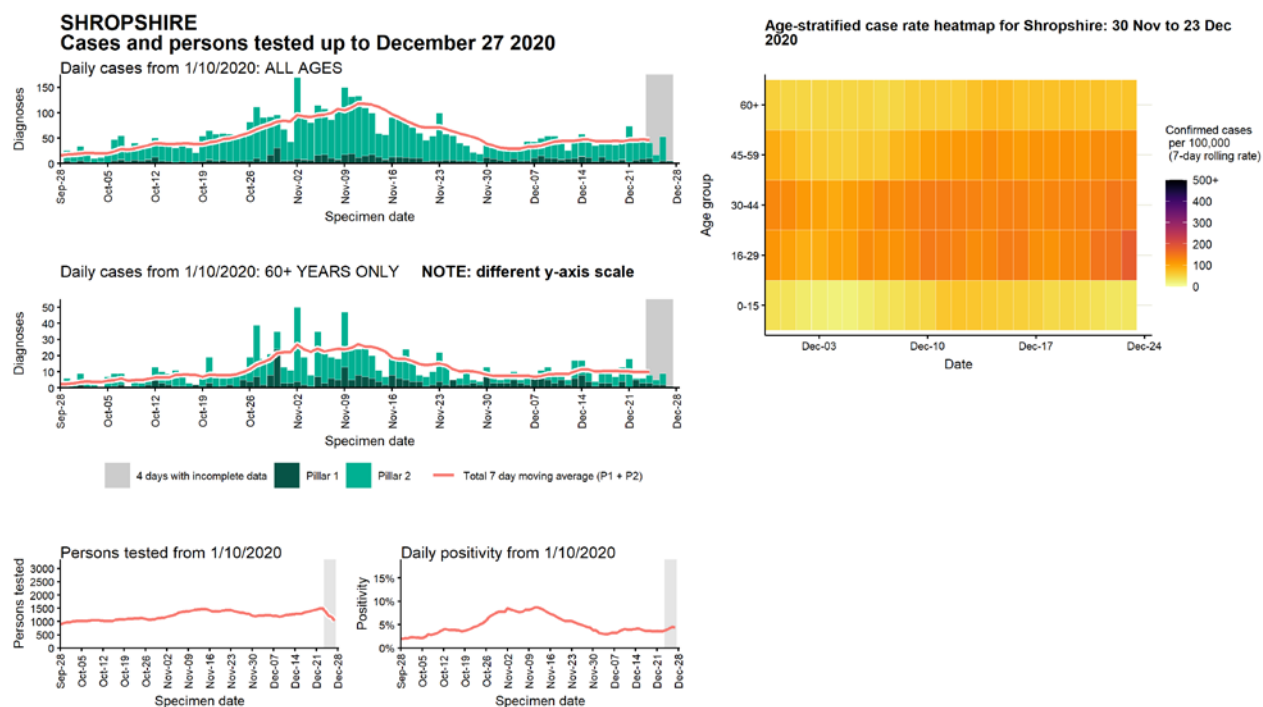
Data from SGSS. Produced by Outbreak Surveillance Team, PHE

Case numbers, testing numbers and positivity, Sandwell : 01 Sep to 27 Dec 2020



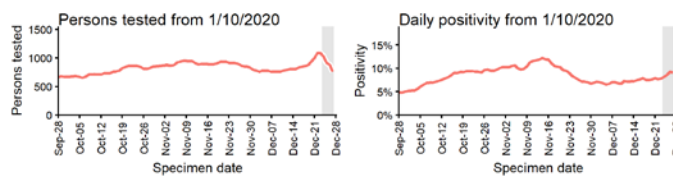
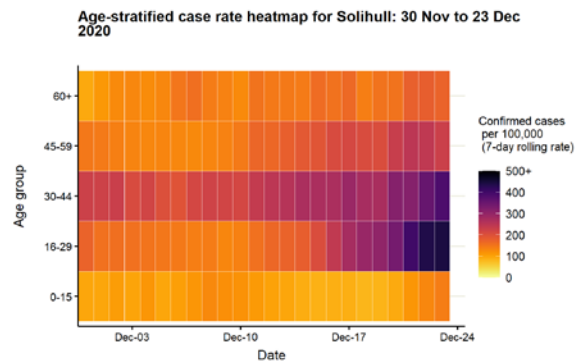
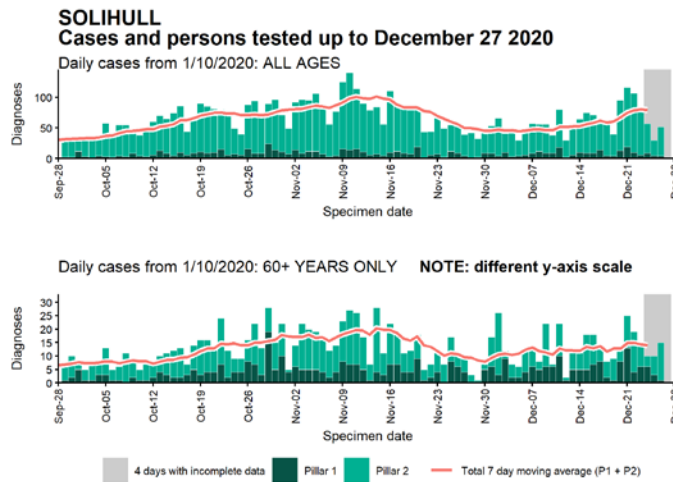
Data from SGSS. Produced by Outbreak Surveillance Team, PHE

Case numbers, testing numbers and positivity, Shropshire : 01 Sep to 27 Dec 2020



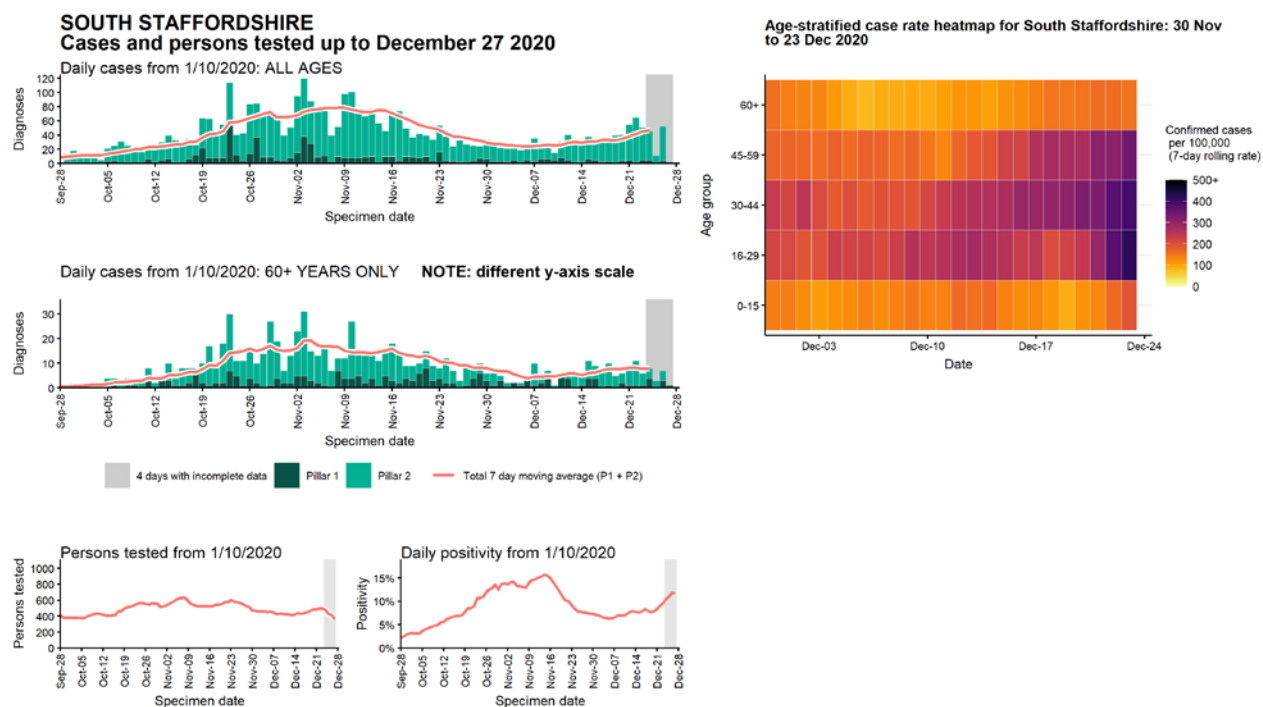
Data from SGSS. Produced by Outbreak Surveillance Team, PHE

Case numbers, testing numbers and positivity, Solihull : 01 Sep to 27 Dec 2020



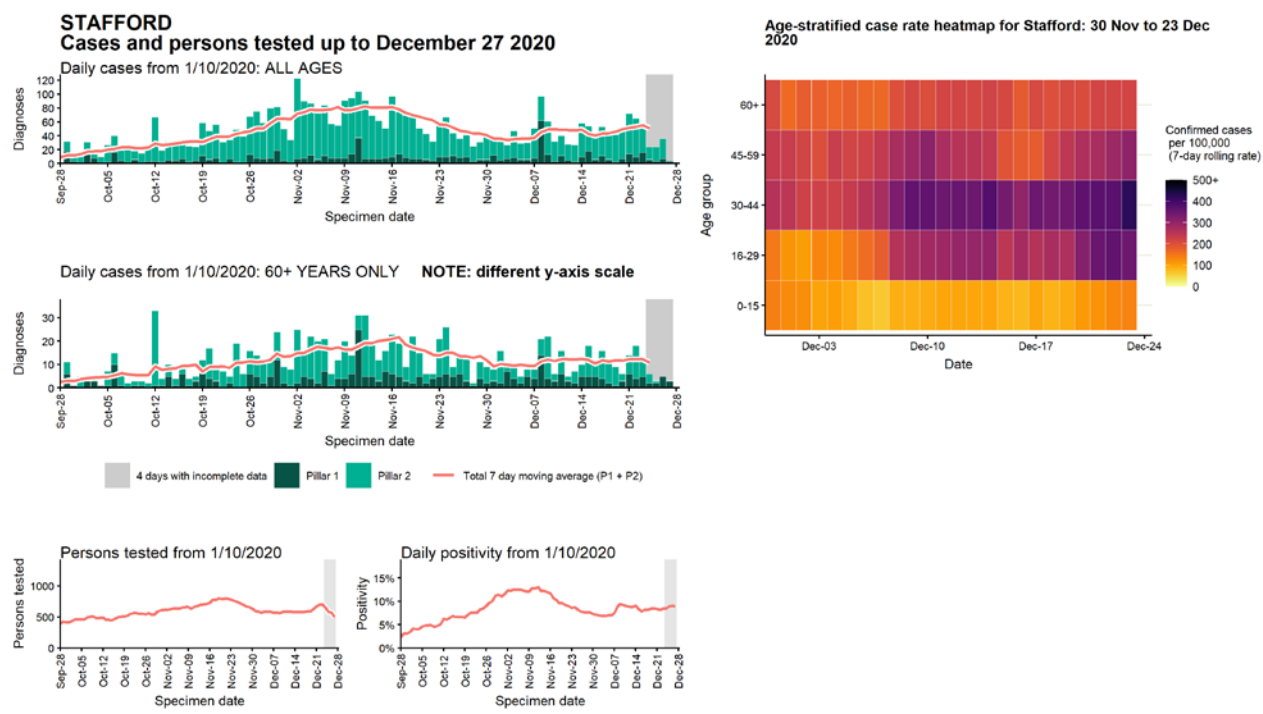
Data from SGSS. Produced by Outbreak Surveillance Team, PHE

Case numbers, testing numbers and positivity, South Staffordshire :
01 Sep to 27 Dec 2020



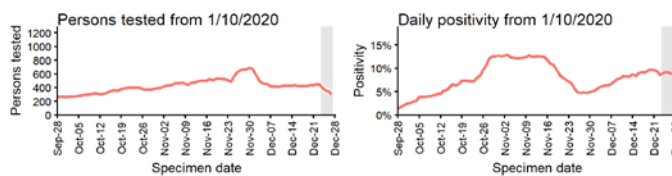
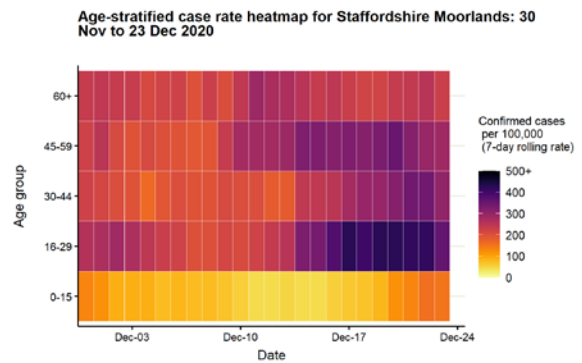
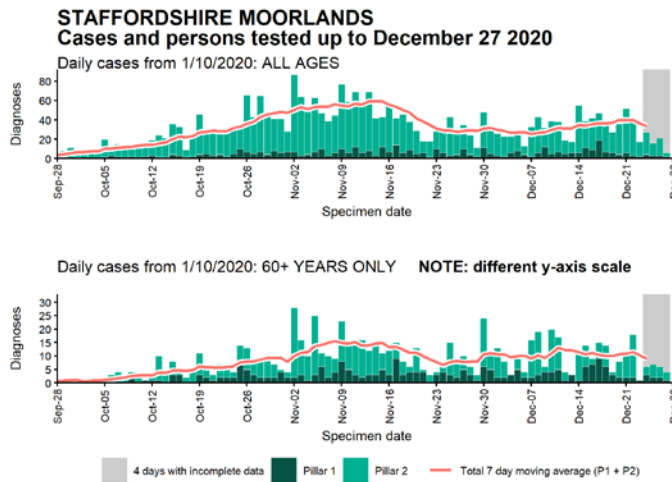
Data from SGSS. Produced by Outbreak Surveillance Team, PHE

Case numbers, testing numbers and positivity, Stafford : 01 Sep to 27 Dec 2020



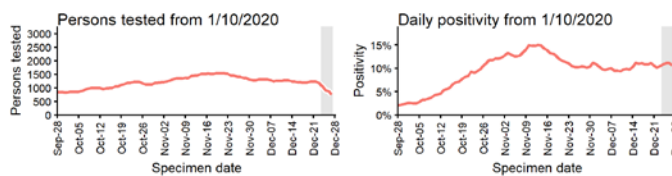
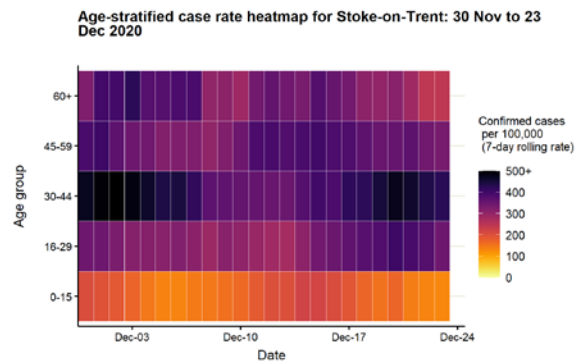
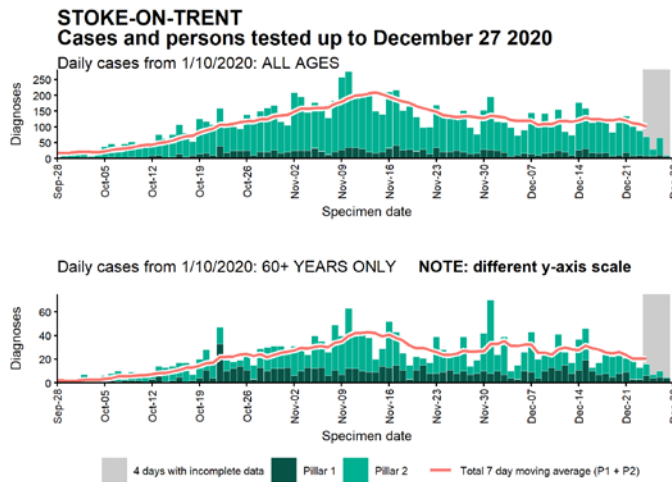
Data from SGSS. Produced by Outbreak Surveillance Team, PHE

Case numbers, testing numbers and positivity, Staffordshire Moorlands : 01 Sep to 27 Dec 2020



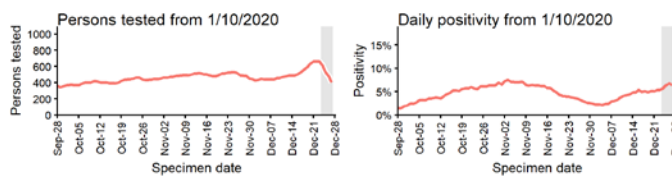
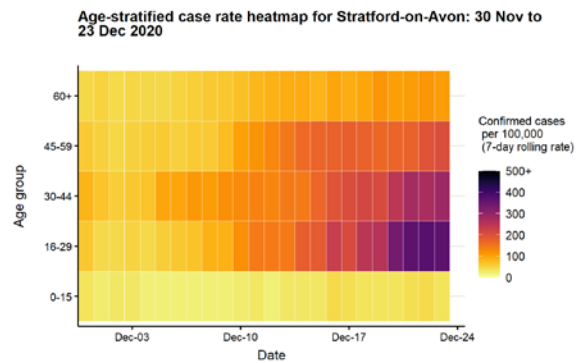
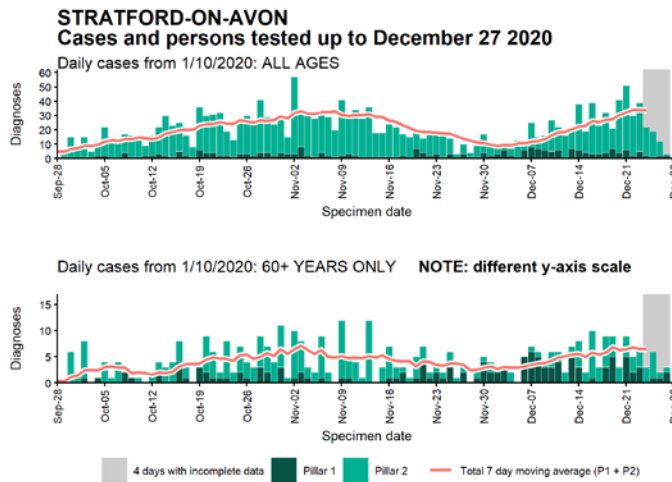
Data from SGSS. Produced by Outbreak Surveillance Team, PHE

Case numbers, testing numbers and positivity, Stoke-on-Trent : 01 Sep to 27 Dec 2020



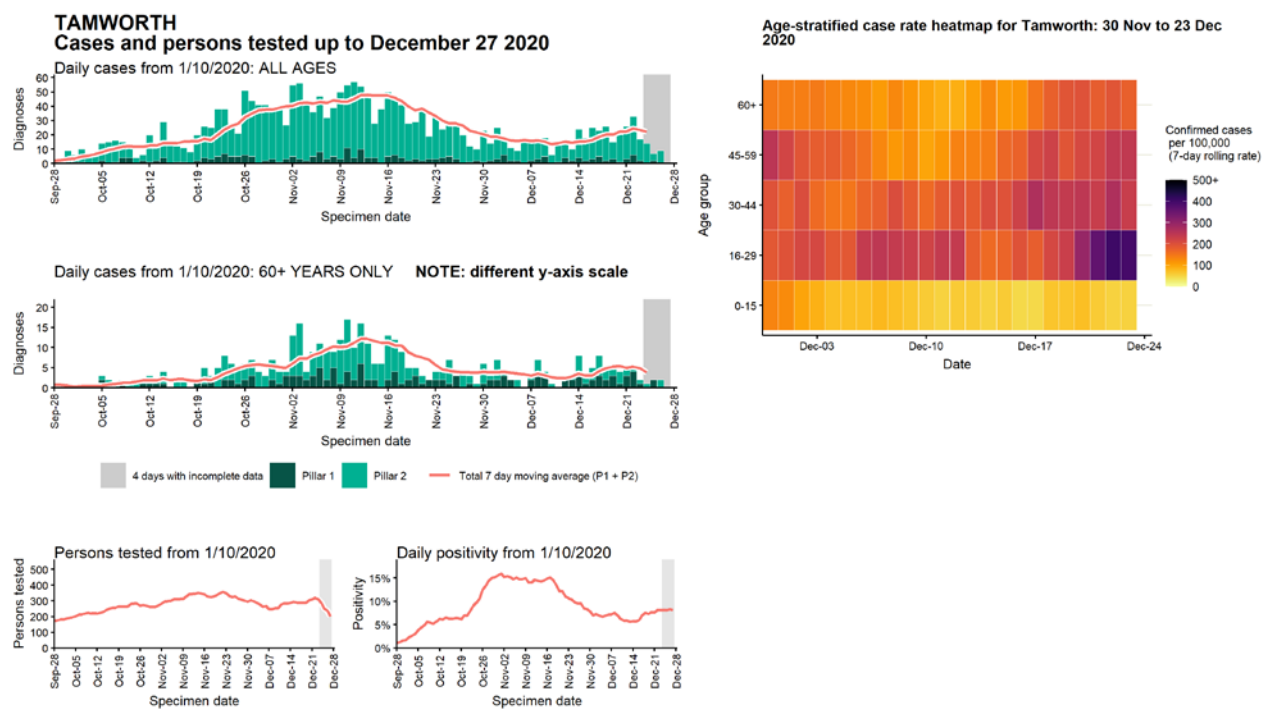
Data from SGSS. Produced by Outbreak Surveillance Team, PHE

Case numbers, testing numbers and positivity, Stratford-on-Avon : 01 Sep to 27 Dec 2020



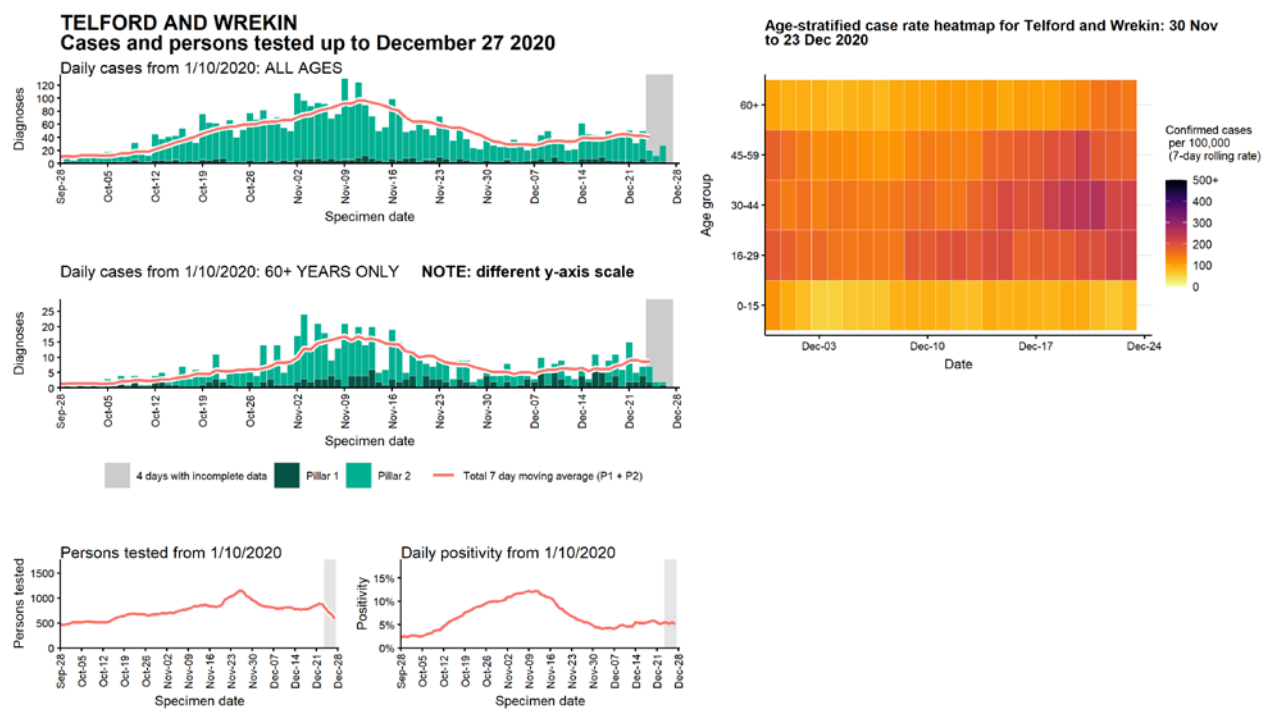
Data from SGSS. Produced by Outbreak Surveillance Team, PHE

Case numbers, testing numbers and positivity, Tamworth : 01 Sep to 27 Dec 2020



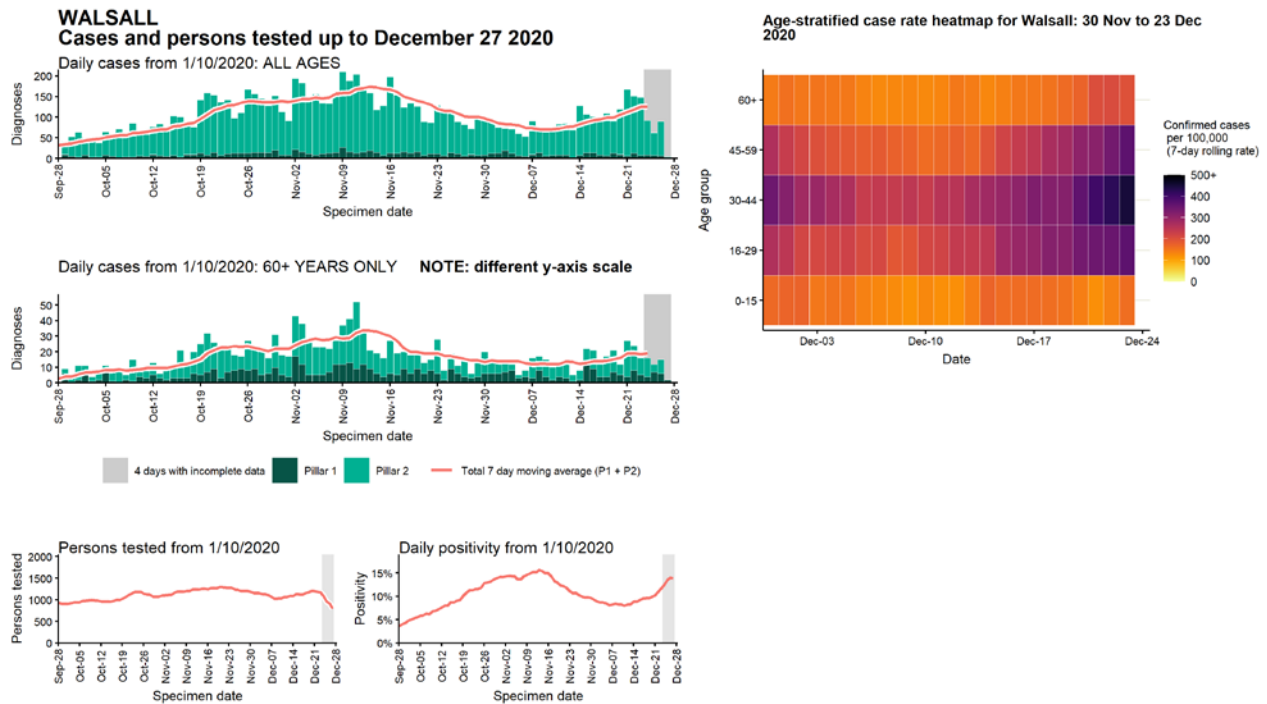
Data from SGSS. Produced by Outbreak Surveillance Team, PHE

Case numbers, testing numbers and positivity, Telford and Wrekin : 01 Sep to 27 Dec 2020



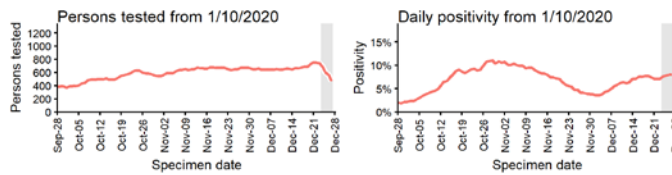
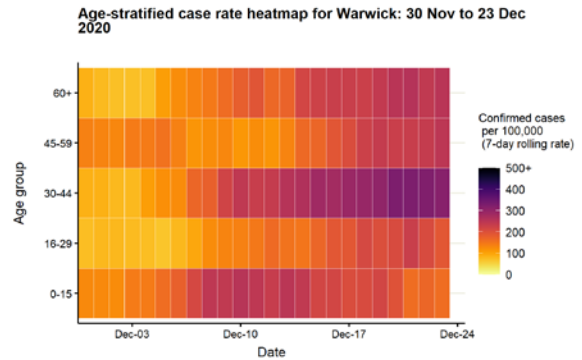
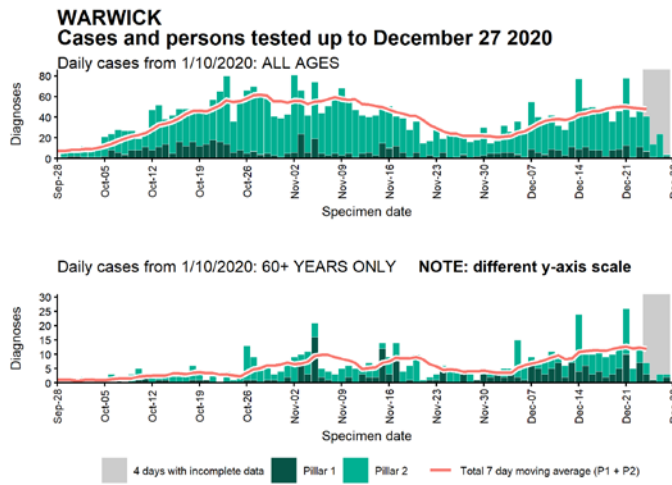
Data from SGSS. Produced by Outbreak Surveillance Team, PHE

Case numbers, testing numbers and positivity, Walsall : 01 Sep to 27 Dec 2020



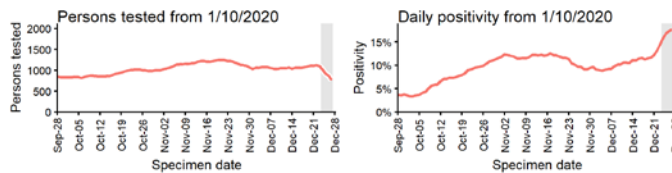
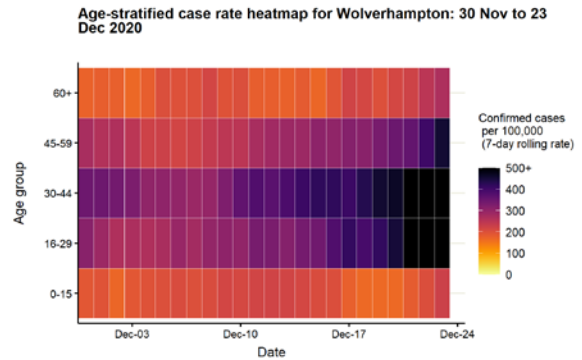
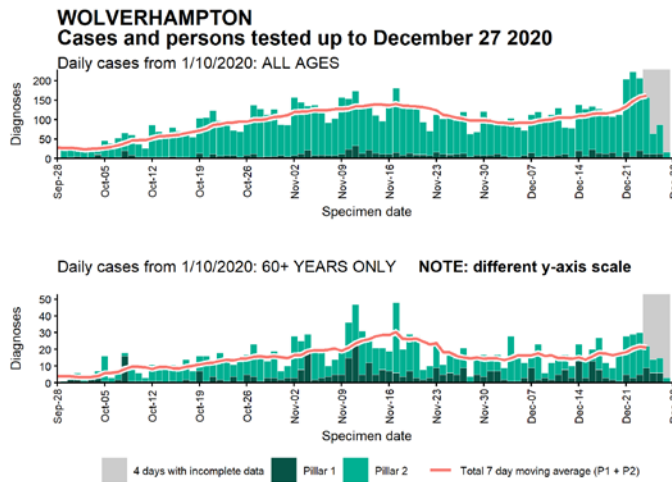
Data from SGSS. Produced by Outbreak Surveillance Team, PHE

Case numbers, testing numbers and positivity, Warwick : 01 Sep to 27 Dec 2020



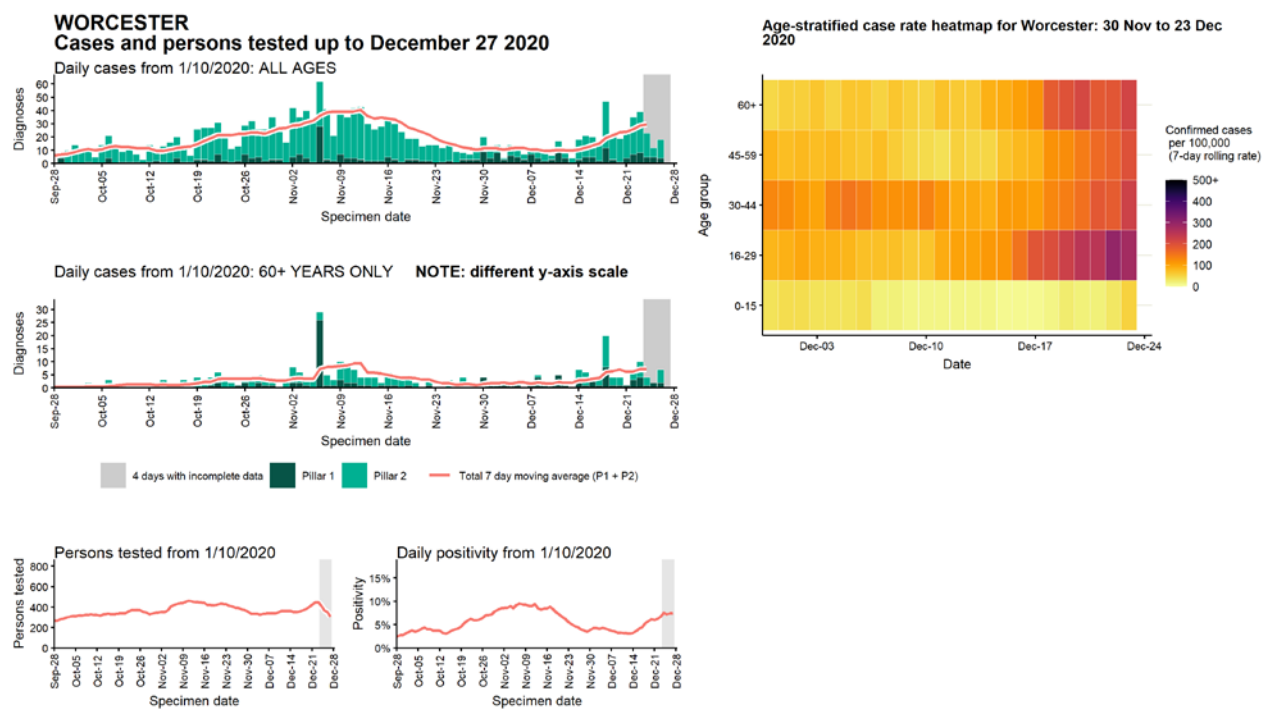
Data from SGSS. Produced by Outbreak Surveillance Team, PHE

Case numbers, testing numbers and positivity, Wolverhampton : 01 Sep to 27 Dec 2020



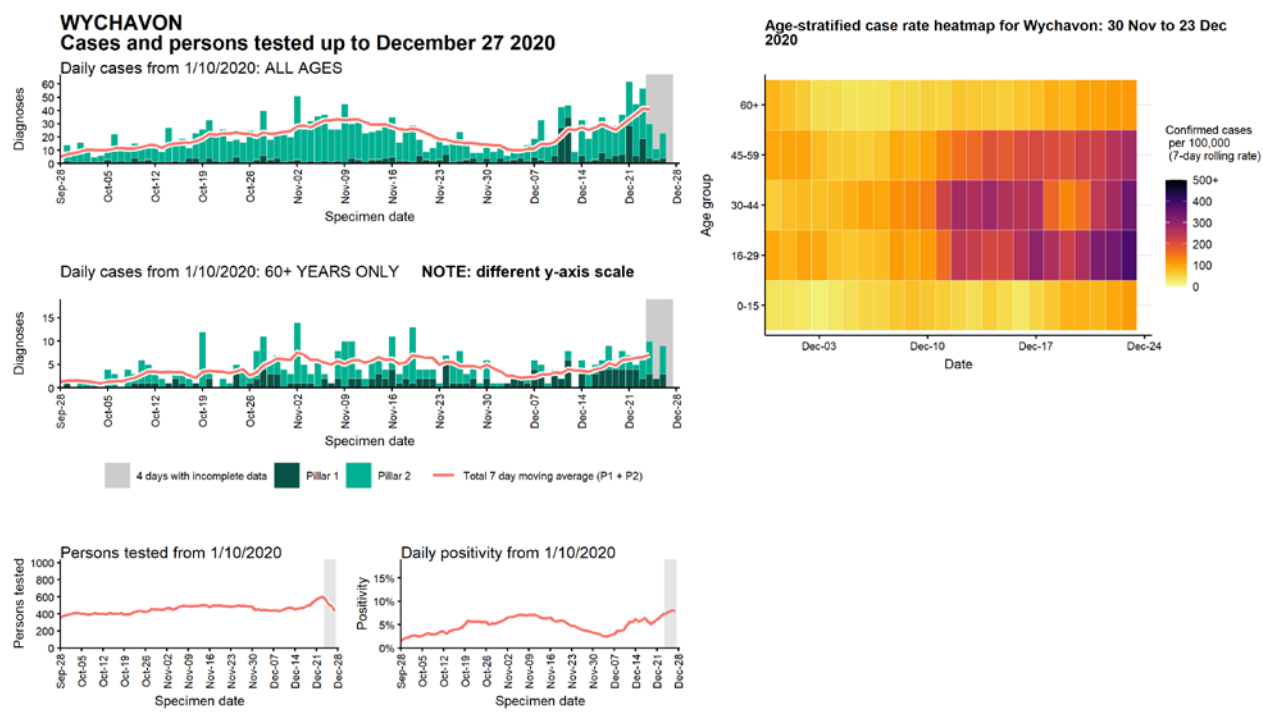
Data from SGSS. Produced by Outbreak Surveillance Team, PHE

Case numbers, testing numbers and positivity, Worcester : 01 Sep to 27 Dec 2020



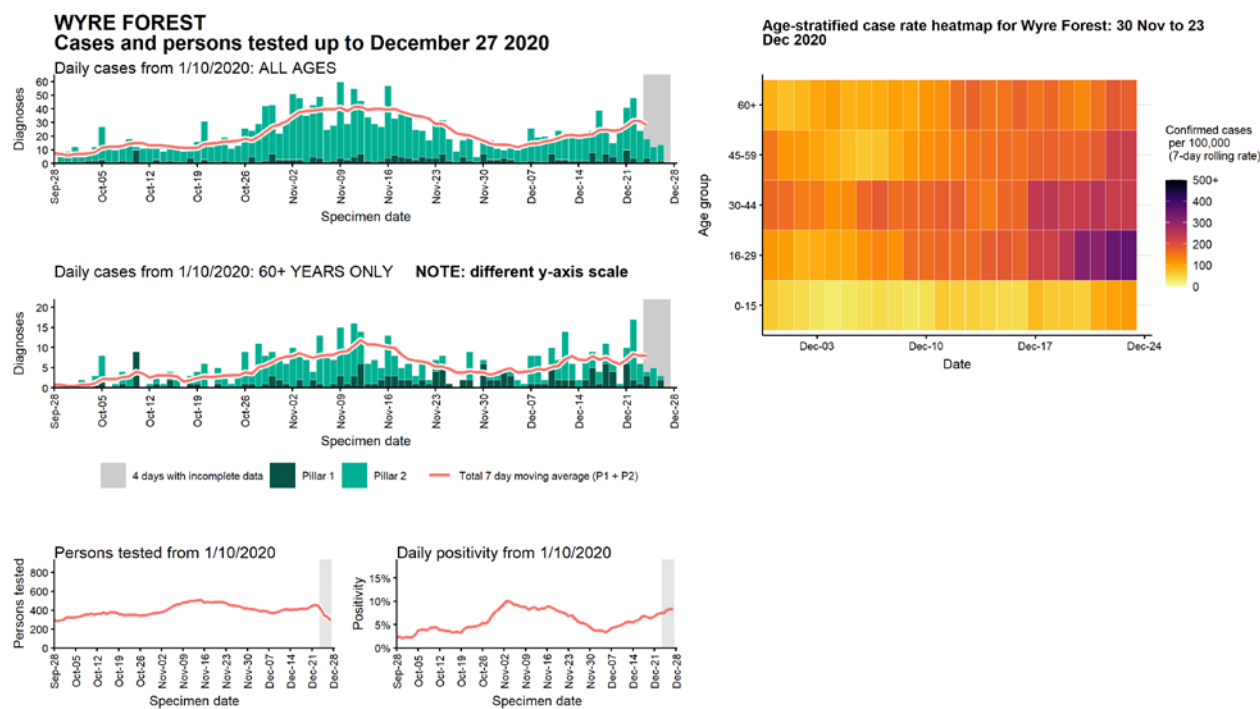
Data from SGSS. Produced by Outbreak Surveillance Team, PHE

Case numbers, testing numbers and positivity, Wychavon : 01 Sep to 27 Dec 2020



Data from SGSS. Produced by Outbreak Surveillance Team, PHE

Case numbers, testing numbers and positivity, Wyre Forest : 01 Sep to 27 Dec 2020



Data from SGSS. Produced by Outbreak Surveillance Team, PHE

© Crown copyright 2020

www.gov.uk/dhsc

This publication is licensed under the terms of the Open Government Licence v3.0 except where otherwise stated. To view this licence, visit nationalarchives.gov.uk/doc/open-government-licence/version/3

Where we have identified any third party copyright information you will need to obtain permission from the copyright holders concerned.

