



Department
of Health &
Social Care

North East: lower tier local authority watchlist – epidemiological charts

Produced 28 December 2020

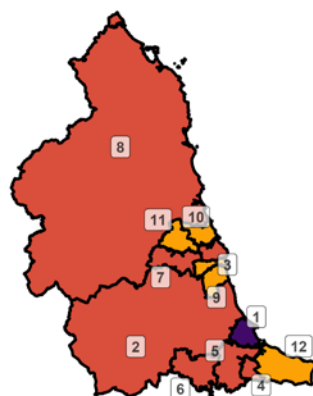
NOTES

- This data is provided by Public Health England for the purpose of monitoring and supporting the management of Covid-19 infections in Local Authorities.
- The reports are produced using 2019 ONS population data
- If you would like to know the weekly trend for the case rate charts and persons tested chart please see Lower-tier local authority watchlist.

Weekly case rate per 100,000 population by local authority: 17 Dec to 23 Dec 2020

Rank	Local Authority	Case Rate (per 100,000)	Number of cases (1 week)
1	Hartlepool	417.5	391
2	County Durham	263.7	1398
3	South Tyneside	249.0	376
4	Middlesbrough	244.0	344
5	Stockton-on-Tees	239.2	472
6	Darlington	237.8	254
7	Gateshead	226.7	458
8	Northumberland	206.9	667
9	Sunderland	195.5	543
10	North Tyneside	164.5	342
11	Newcastle upon Tyne	144.3	437
12	Redcar and Cleveland	128.3	176

North East
COVID-19 cases: 17 Dec to 23 Dec 2020
Weekly case rates per 100,000 population by local authority

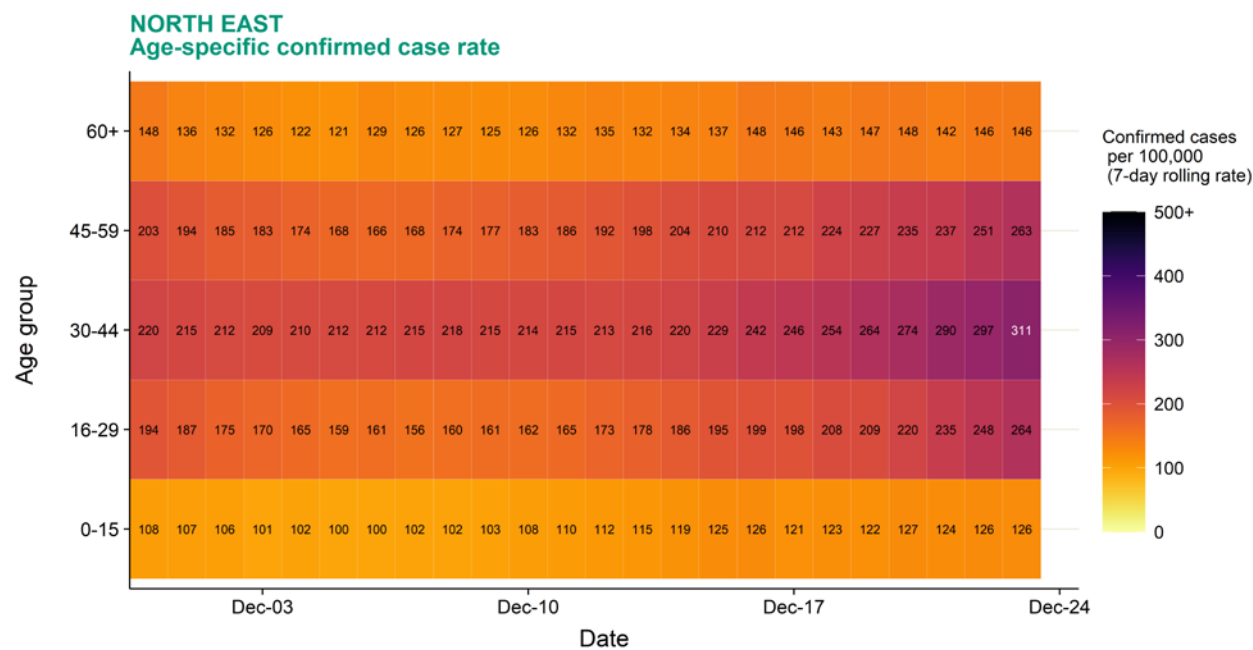


Covid-19 rate by local authority



Data from SGSS; Pillar 1 and 2 testing. Figure by Outbreak Surveillance Team, Public Health England.
Contains National Statistics data including 2019 population estimates Â© Crown copyright and database right 2020

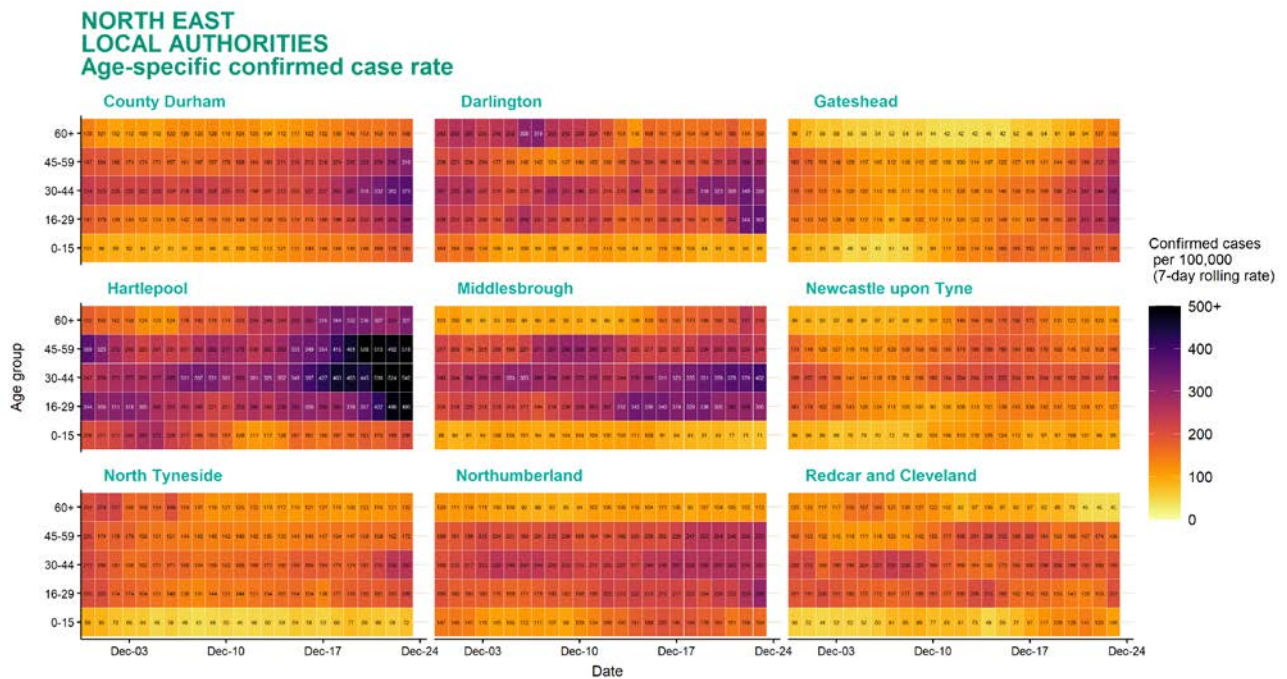
Age-stratified heatmap of weekly case rate for North East : 30 Nov to 23 Dec 2020



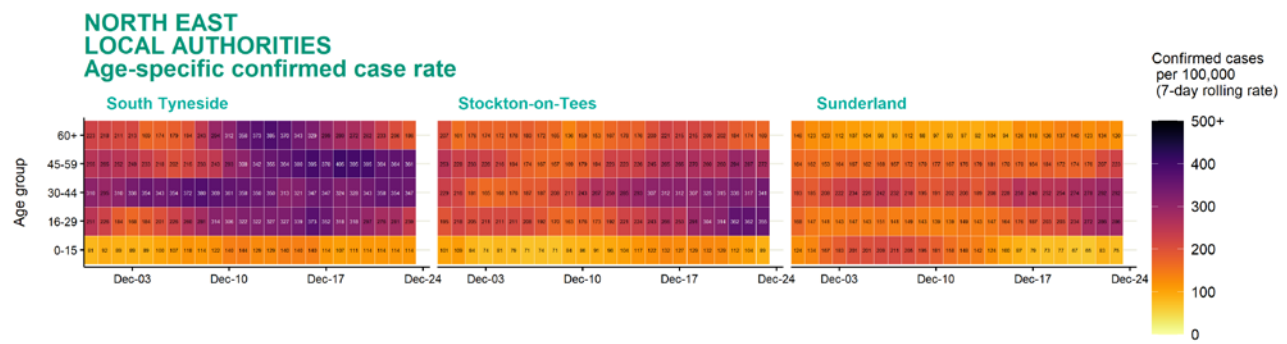
Source: Case data from SGSS. Produced by Outbreak Surveillance Team, PHE

Contains National Statistics data Â© Crown copyright and database right 2020

Age-stratified heatmap of weekly case rate by local authority for North East : 30 Nov to 23 Dec 2020



Age-stratified heatmap of weekly case rate by local authority for North East : 30 Nov to 23 Dec 2020

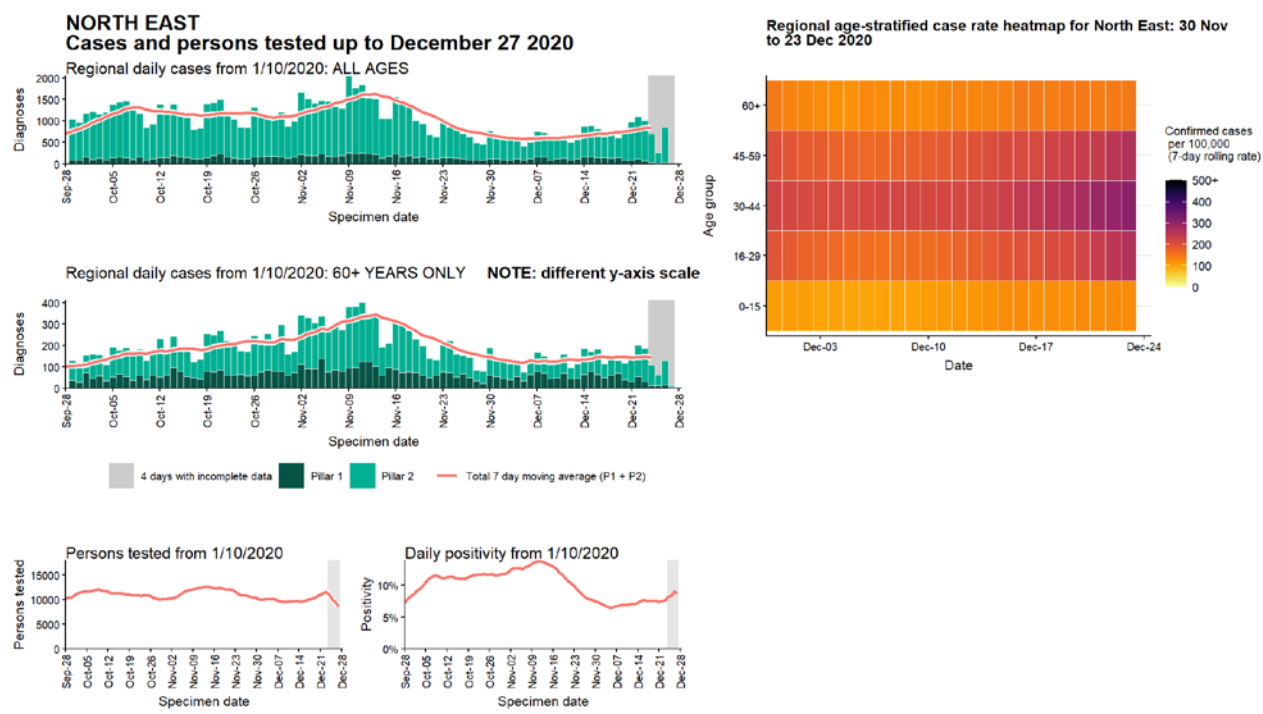


Date

Source: Case data from SGSS. Produced by Outbreak Surveillance Team, PHE

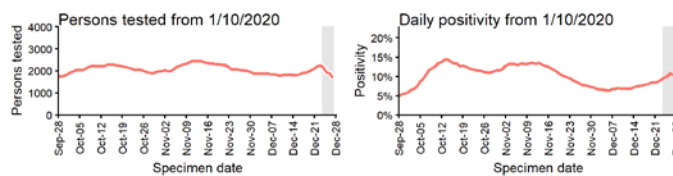
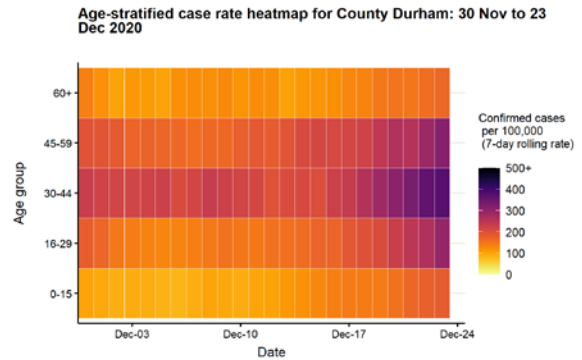
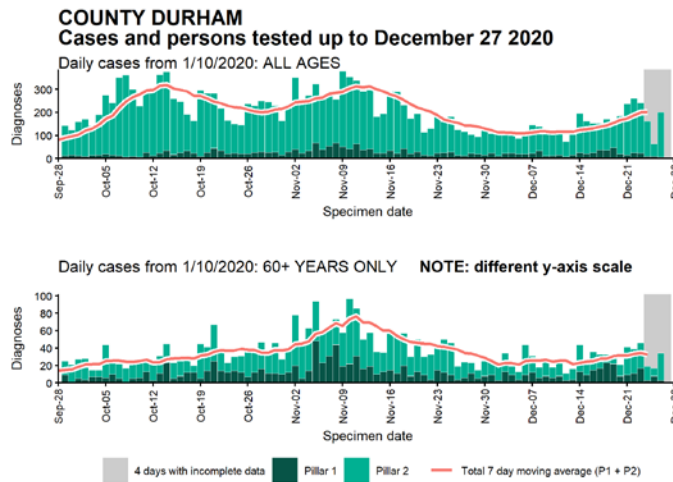
Contains National Statistics data Â© Crown copyright and database right 2020

Regional case numbers, testing numbers and positivity, North East : 01 Sep to 27 Dec 2020



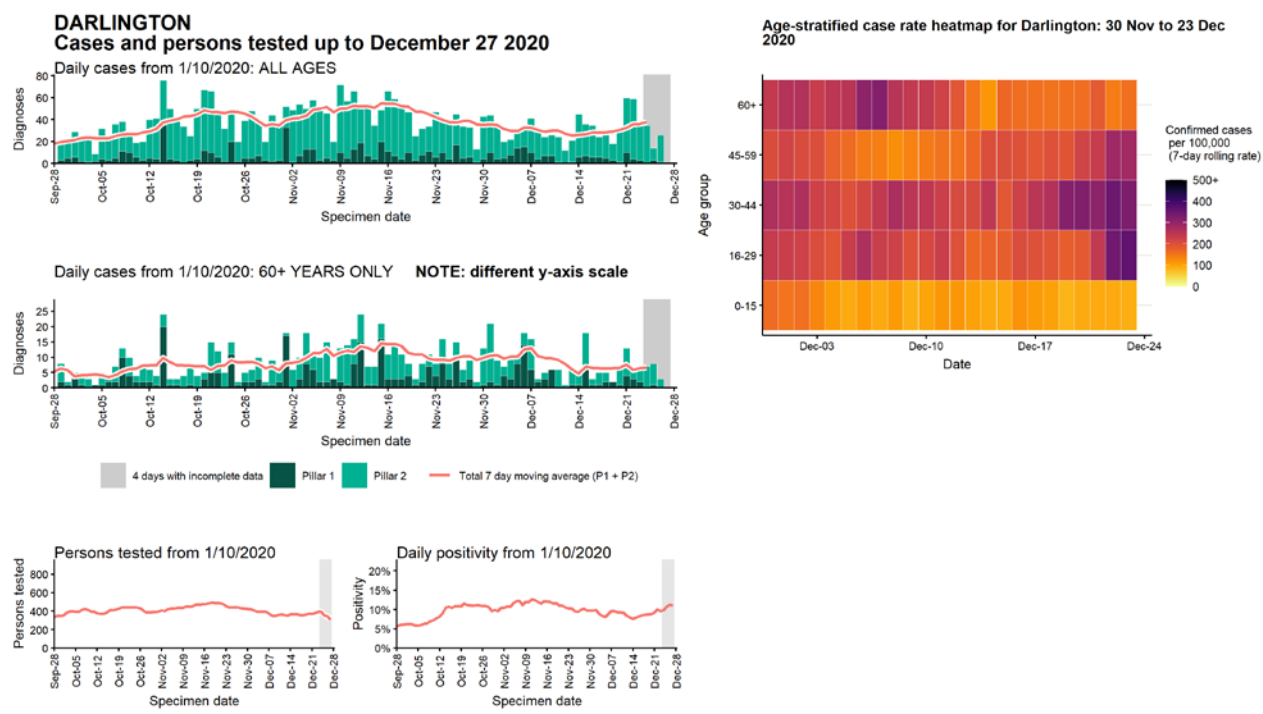
Data from SGSS. Produced by Outbreak Surveillance Team, PHE

Case numbers, testing numbers and positivity, County Durham : 01 Sep to 27 Dec 2020



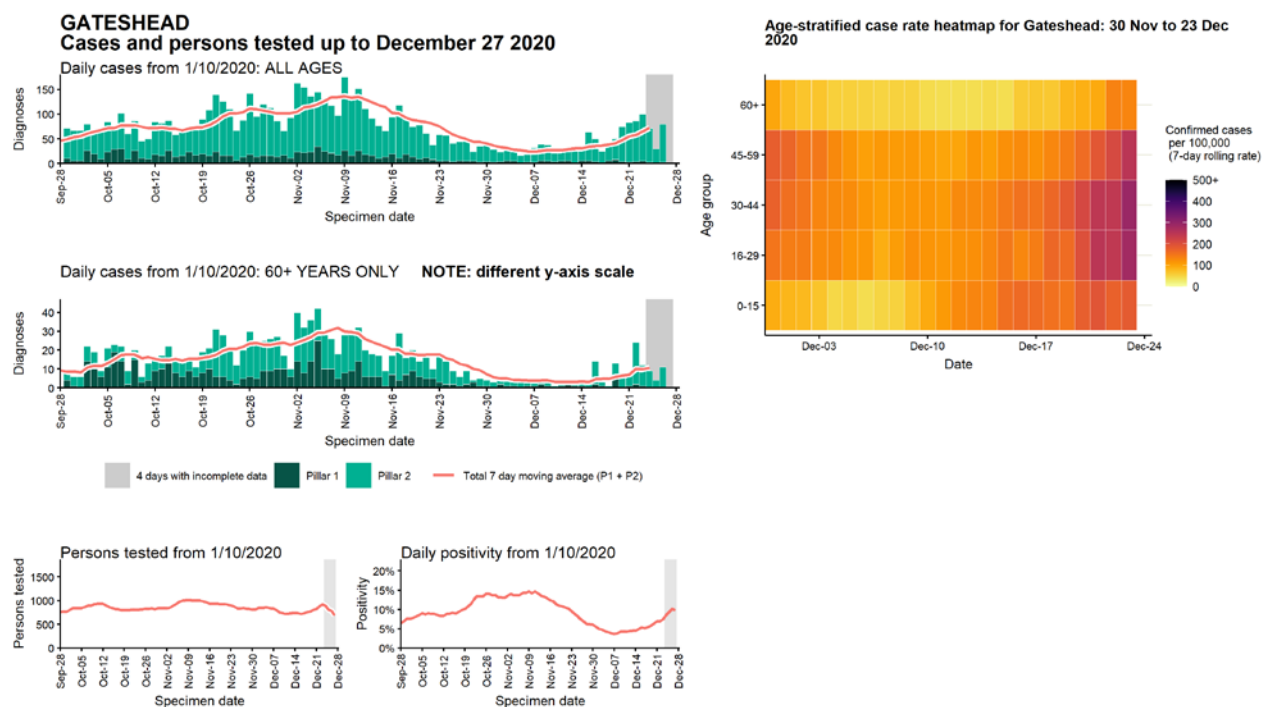
Data from SGSS. Produced by Outbreak Surveillance Team, PHE

Case numbers, testing numbers and positivity, Darlington : 01 Sep to 27 Dec 2020



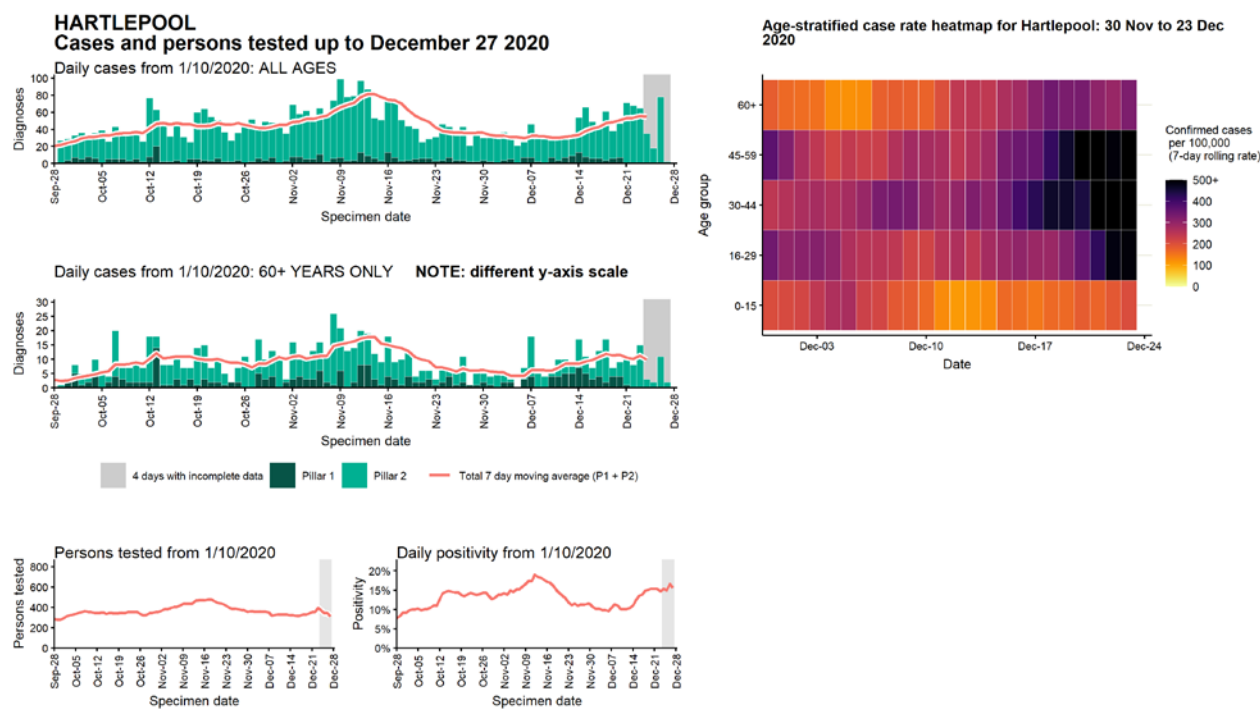
Data from SGSS. Produced by Outbreak Surveillance Team, PHE

Case numbers, testing numbers and positivity, Gateshead : 01 Sep to 27 Dec 2020



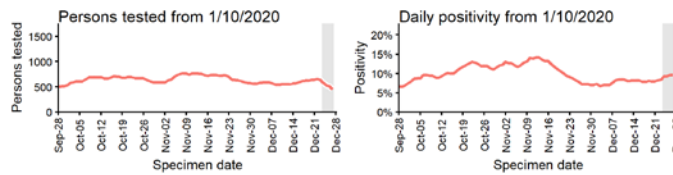
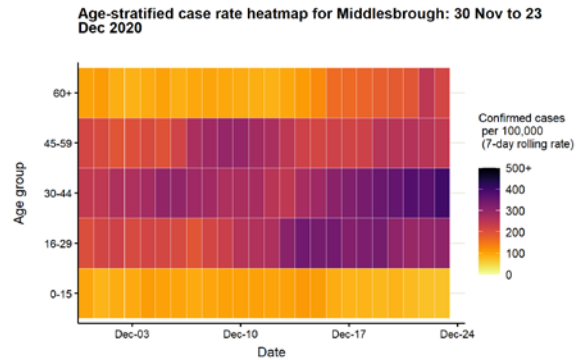
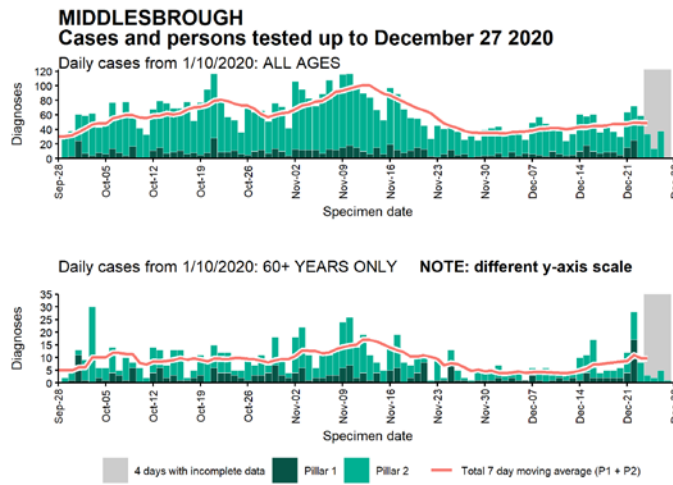
Data from SGSS. Produced by Outbreak Surveillance Team, PHE

Case numbers, testing numbers and positivity, Hartlepool : 01 Sep to 27 Dec 2020



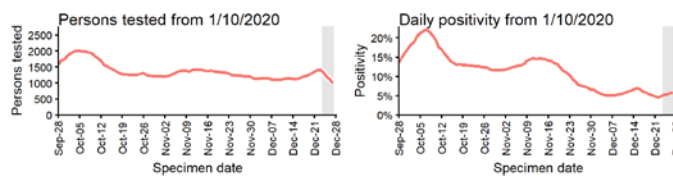
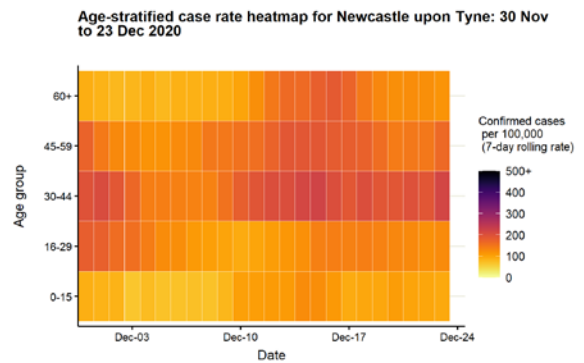
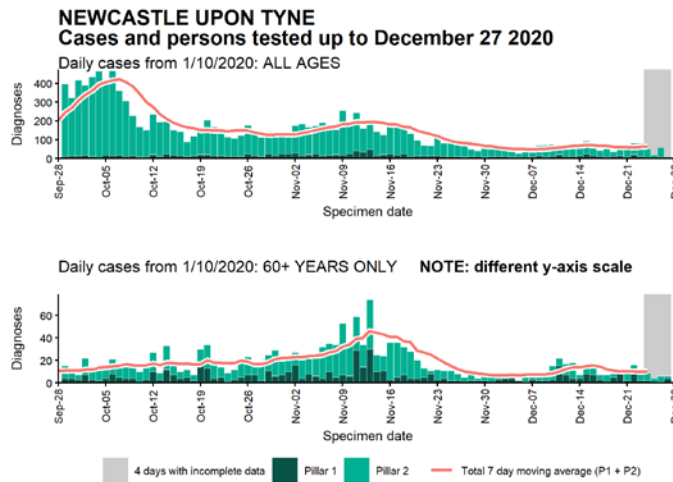
Data from SGSS. Produced by Outbreak Surveillance Team, PHE

Case numbers, testing numbers and positivity, Middlesbrough : 01 Sep to 27 Dec 2020



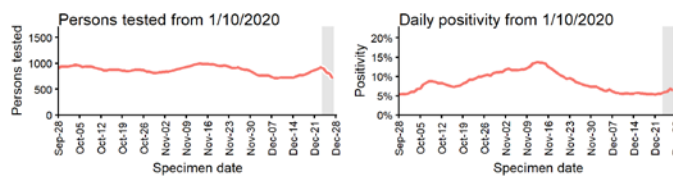
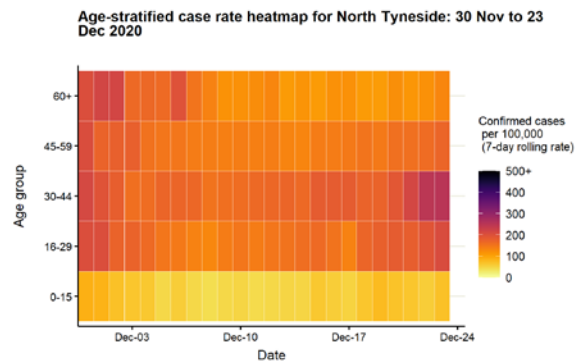
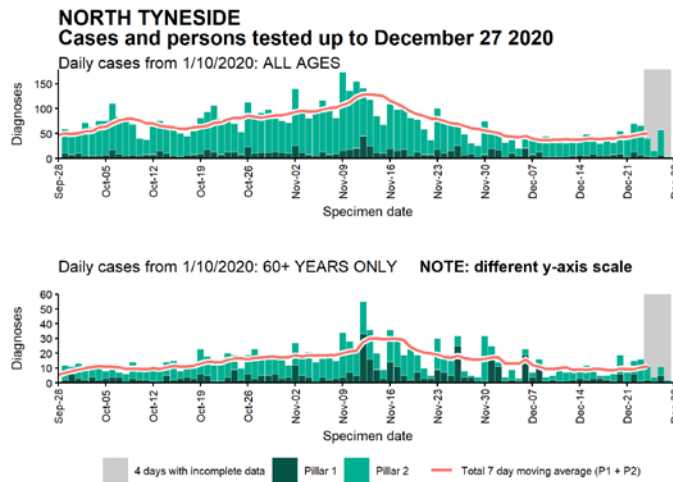
Data from SGSS. Produced by Outbreak Surveillance Team, PHE

Case numbers, testing numbers and positivity, Newcastle upon Tyne : 01 Sep to 27 Dec 2020



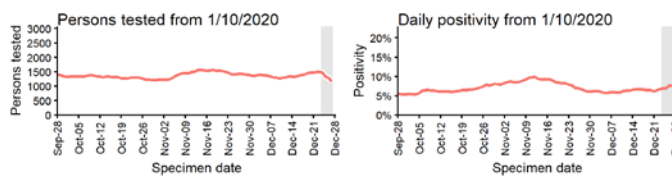
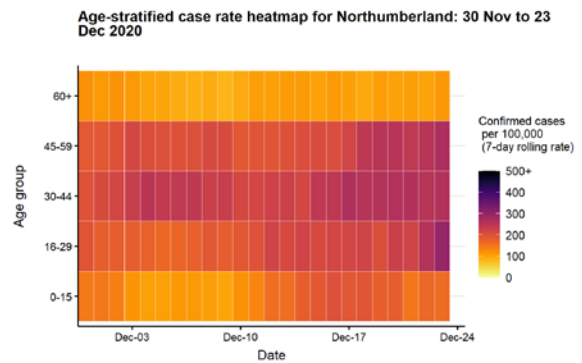
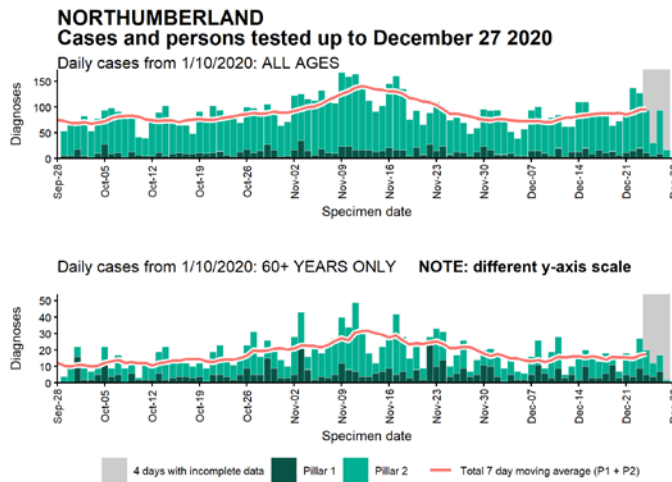
Data from SGSS. Produced by Outbreak Surveillance Team, PHE

Case numbers, testing numbers and positivity, North Tyneside : 01 Sep to 27 Dec 2020



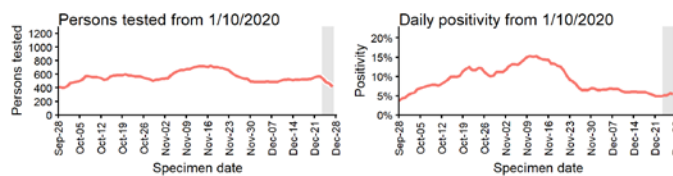
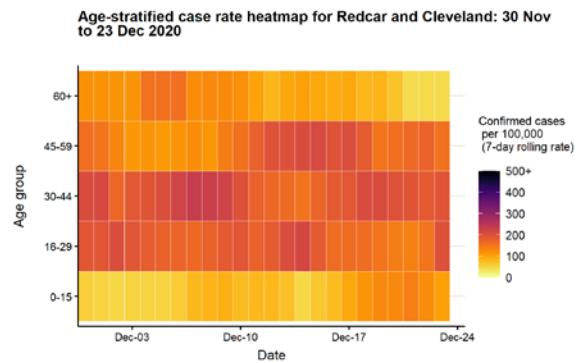
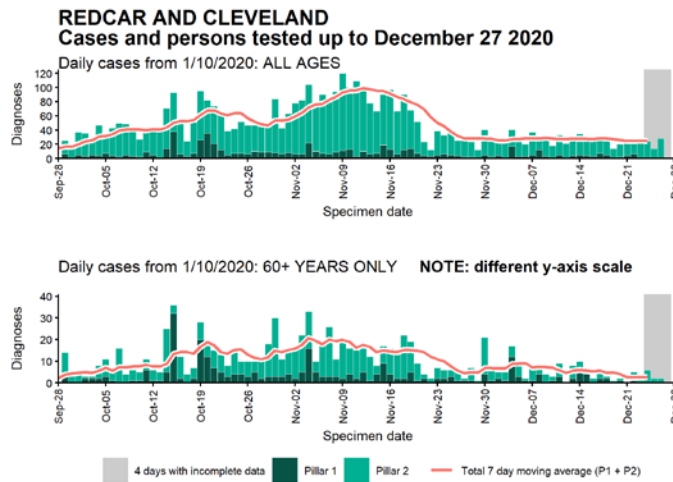
Data from SGSS. Produced by Outbreak Surveillance Team, PHE

Case numbers, testing numbers and positivity, Northumberland : 01 Sep to 27 Dec 2020



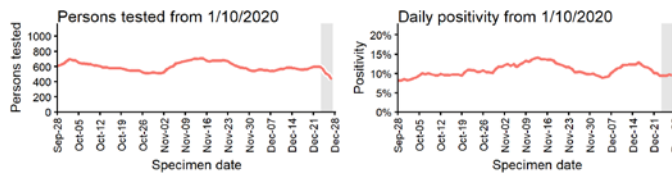
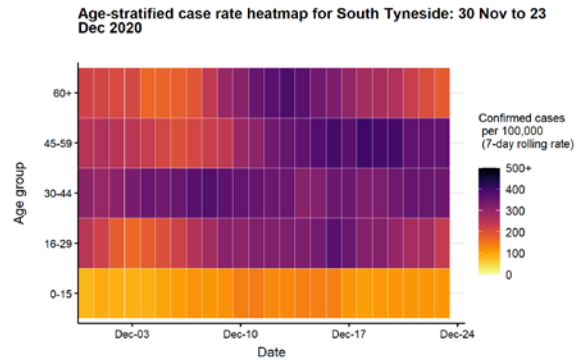
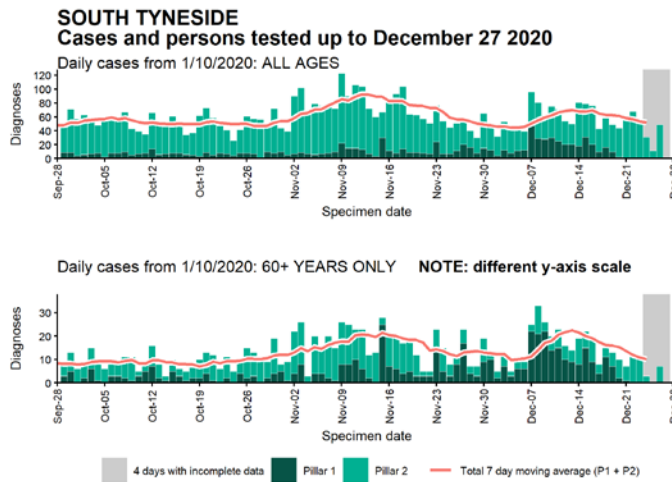
Data from SGSS. Produced by Outbreak Surveillance Team, PHE

Case numbers, testing numbers and positivity, Redcar and Cleveland : 01 Sep to 27 Dec 2020



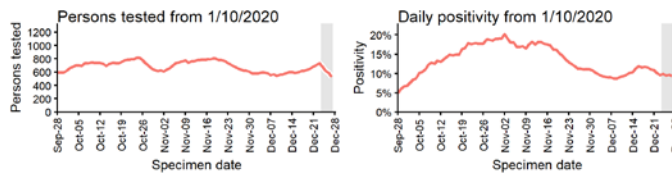
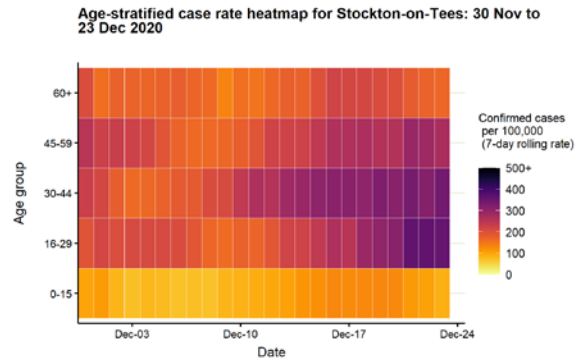
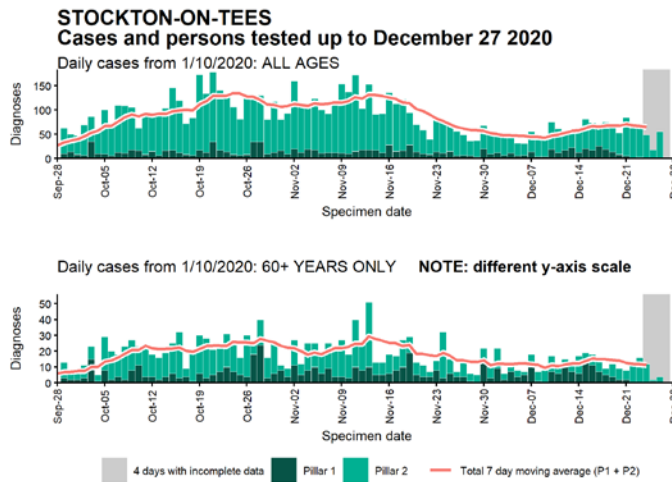
Data from SGSS. Produced by Outbreak Surveillance Team, PHE

Case numbers, testing numbers and positivity, South Tyneside : 01 Sep to 27 Dec 2020



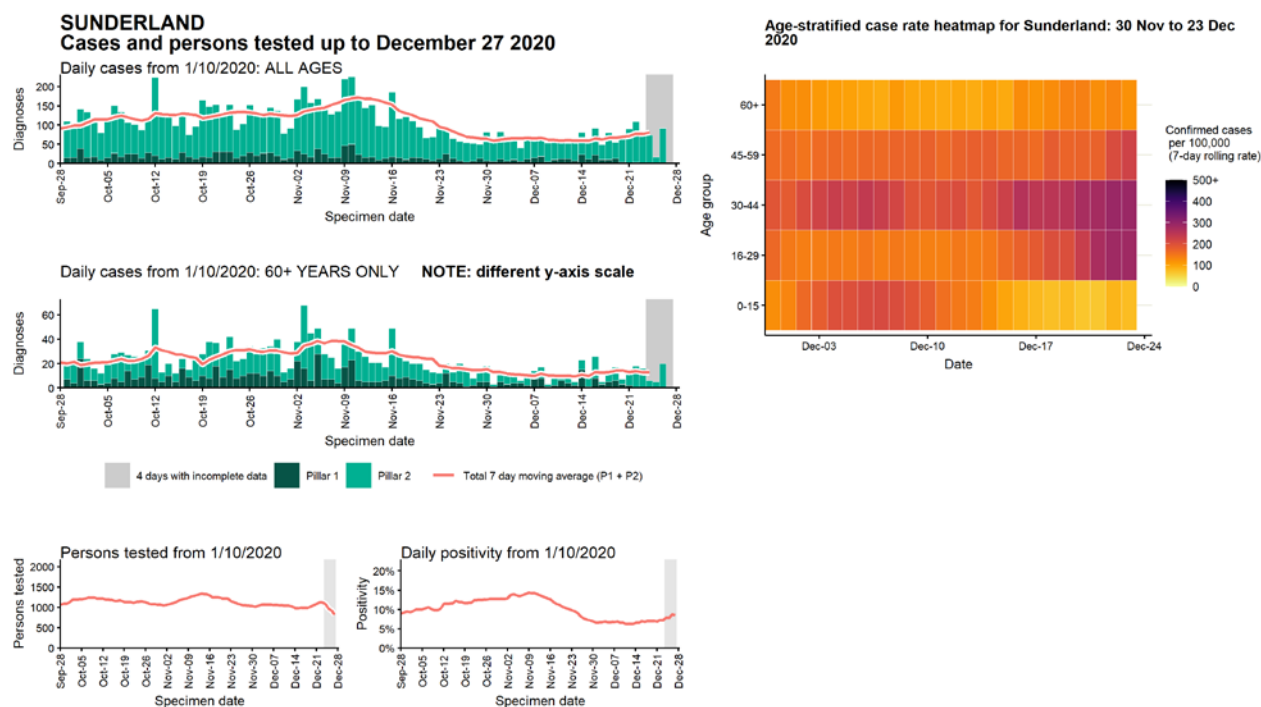
Data from SGSS. Produced by Outbreak Surveillance Team, PHE

Case numbers, testing numbers and positivity, Stockton-on-Tees : 01 Sep to 27 Dec 2020



Data from SGSS. Produced by Outbreak Surveillance Team, PHE

Case numbers, testing numbers and positivity, Sunderland : 01 Sep to 27 Dec 2020



Data from SGSS. Produced by Outbreak Surveillance Team, PHE

© Crown copyright 2020

www.gov.uk/dhsc

This publication is licensed under the terms of the Open Government Licence v3.0 except where otherwise stated. To view this licence, visit nationalarchives.gov.uk/doc/open-government-licence/version/3

Where we have identified any third party copyright information you will need to obtain permission from the copyright holders concerned.

