



Department
of Health &
Social Care

East Midlands: lower tier local authority watchlist – epidemiological charts

Produced 28 December 2020

NOTES

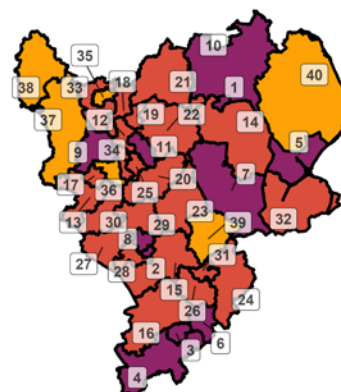
- This data is provided by Public Health England for the purpose of monitoring and supporting the management of Covid-19 infections in Local Authorities.
- The reports are produced using 2019 ONS population data
- If you would like to know the weekly trend for the case rate charts and persons tested chart please see Lower-tier local authority watchlist.

Weekly case rate per 100,000 population by local authority: 17 Dec to 23 Dec 2020

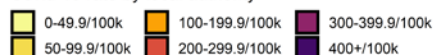
Rank	Local Authority	Case Rate (per 100,000)	Number of cases (1 week)
1	Lincoln	388.7	386
2	Oadby and Wigston	371.8	212
3	Northampton	366.0	822
4	South Northamptonshire	360.9	341
5	Boston	354.8	249
6	Wellingborough	331.2	264
7	South Kesteven	313.9	447
8	Leicester	310.0	1098
9	Amber Valley	309.8	397
10	West Lindsey	308.4	295
11	Gedling	302.8	357
12	Ashfield	299.4	383
13	South Derbyshire	284.4	305
14	North Kesteven	279.7	327
15	Harborough	266.5	250
16	Daventry	261.8	225
17	Derby	249.9	643
18	Bolsover	245.8	198
19	Mansfield	242.4	265
20	Rushcliffe	240.8	287

Rank	Local Authority	Case Rate (per 100,000)	Number of cases (1 week)
21	Bassetlaw	240.1	282
22	Newark and Sherwood	238.5	292
23	Melton	236.3	121
24	East Northamptonshire	235.9	223
25	Nottingham	233.7	778
26	Kettering	231.9	236
27	Hinckley and Bosworth	231.6	262
28	Blaby	228.5	232
29	Charnwood	223.8	416
30	North West Leicestershire	216.2	224
31	Corby	211.9	153
32	South Holland	209.4	199
33	North East Derbyshire	205.0	208
34	Broxtowe	202.6	231
35	Chesterfield	191.6	201
36	Erewash	187.2	216
37	Derbyshire Dales	165.9	120
38	High Peak	153.2	142
39	Rutland	152.8	61
40	East Lindsey	132.6	188

East Midlands
COVID-19 cases: 17 Dec to 23 Dec 2020
Weekly case rates per 100,000 population by local authority

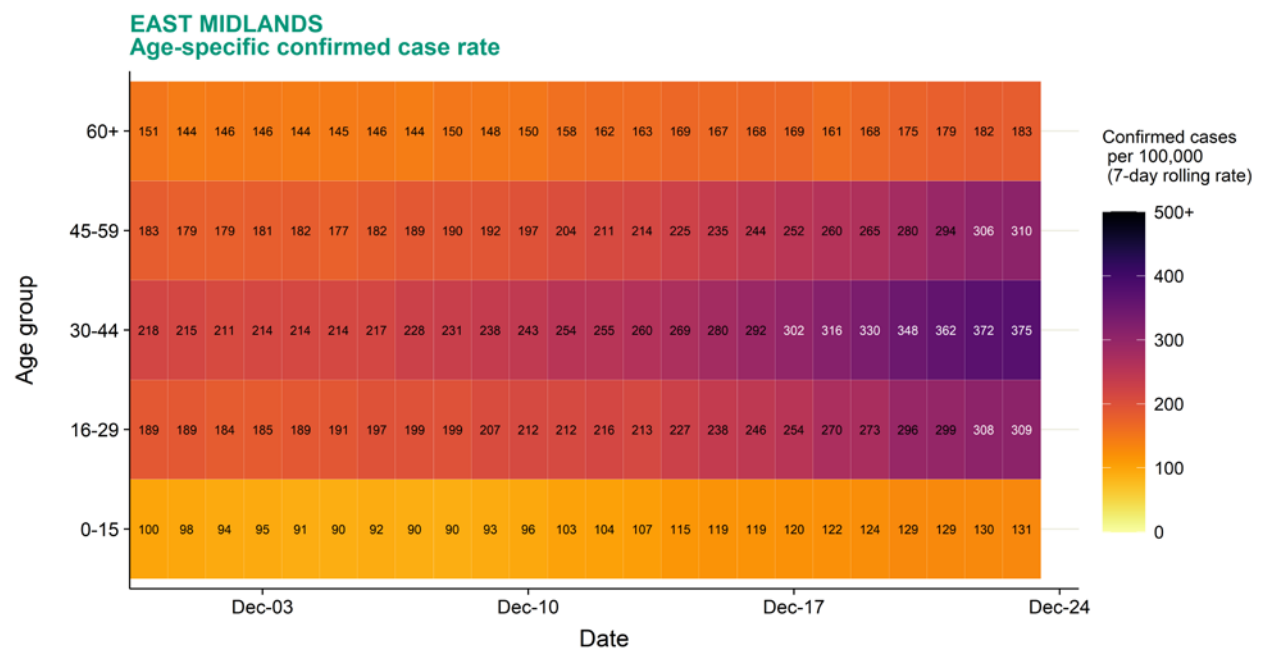


Covid-19 rate by local authority



Data from SGSS; Pillar 1 and 2 testing. Figure by Outbreak Surveillance Team, Public Health England.
Contains National Statistics data including 2019 population estimates Â© Crown copyright and database right 2020

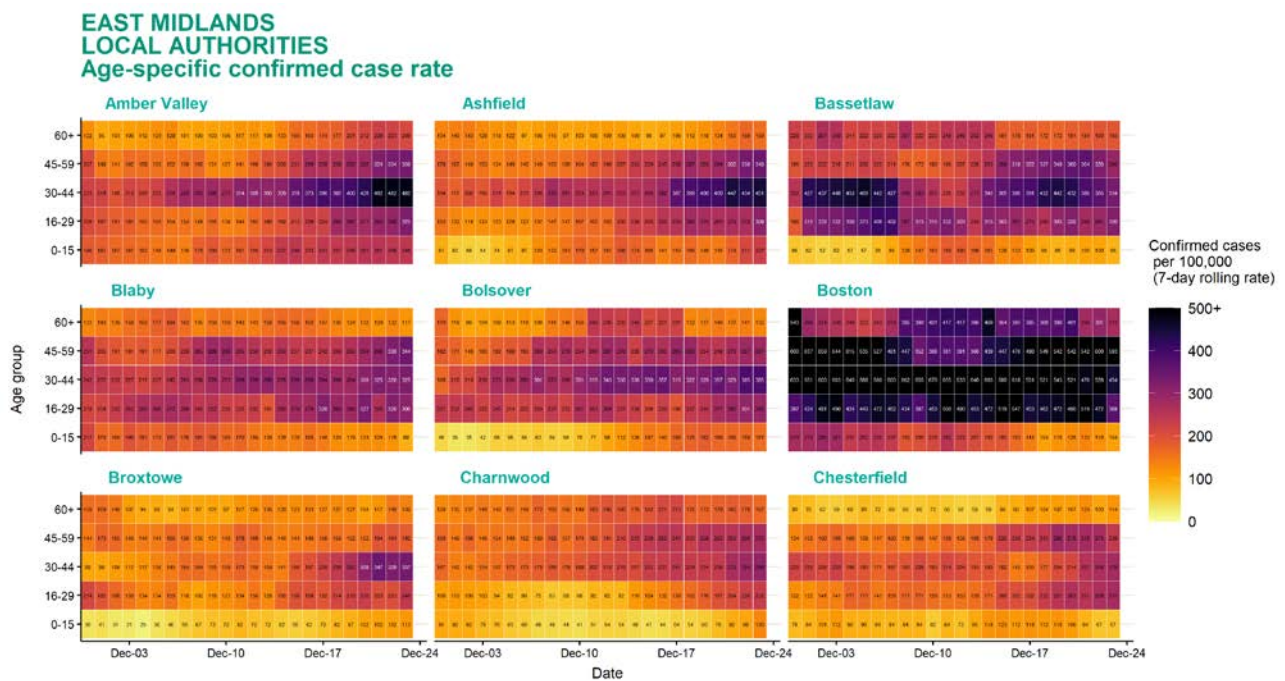
Age-stratified heatmap of weekly case rate for East Midlands : 30 Nov to 23 Dec 2020



Source: Case data from SGSS. Produced by Outbreak Surveillance Team, PHE

Contains National Statistics data Â© Crown copyright and database right 2020

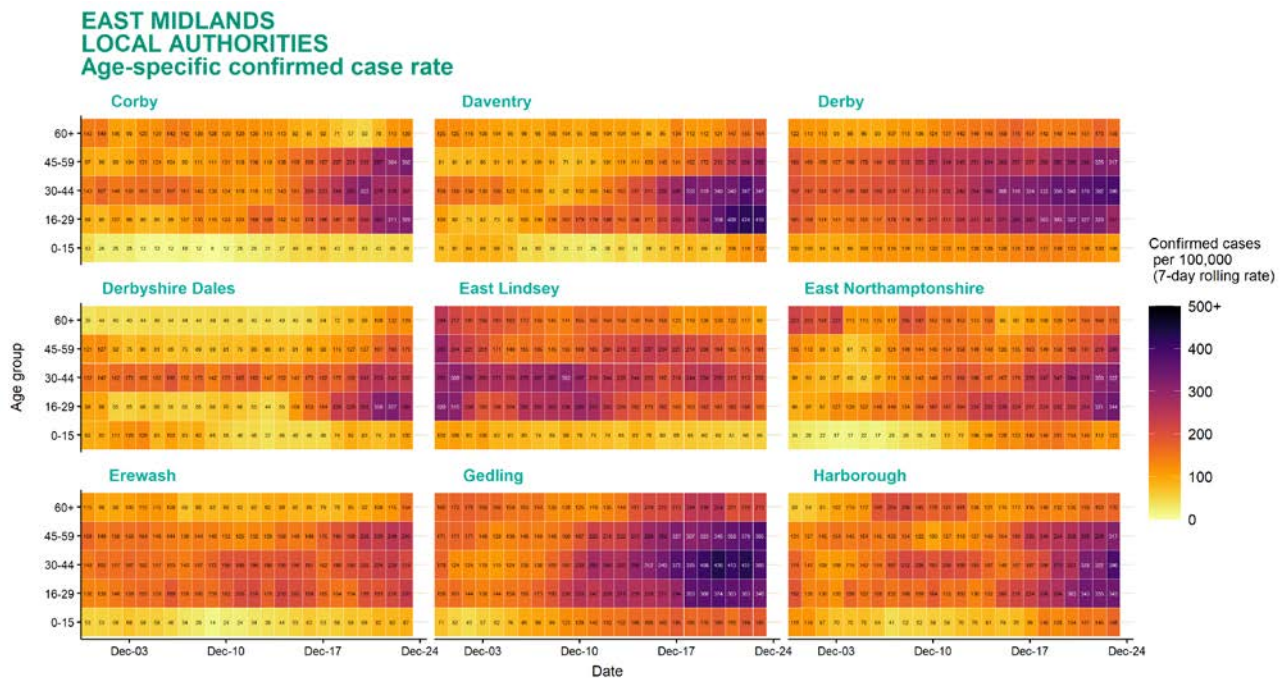
Age-stratified heatmap of weekly case rate by local authority for East Midlands : 30 Nov to 23 Dec 2020



Source: Case data from SGSS. Produced by Outbreak Surveillance Team, PHE

Contains National Statistics data Â© Crown copyright and database right 2020

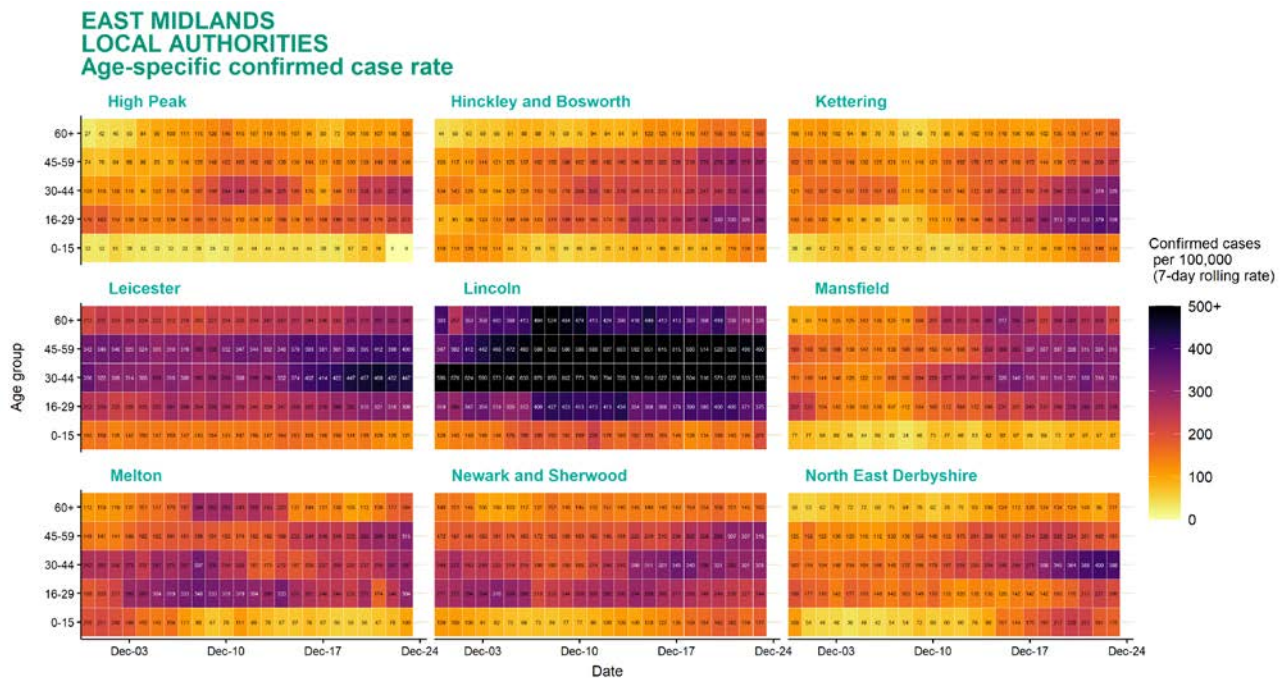
Age-stratified heatmap of weekly case rate by local authority for East Midlands : 30 Nov to 23 Dec 2020



Source: Case data from SGSS. Produced by Outbreak Surveillance Team, PHE

Contains National Statistics data Â© Crown copyright and database right 2020

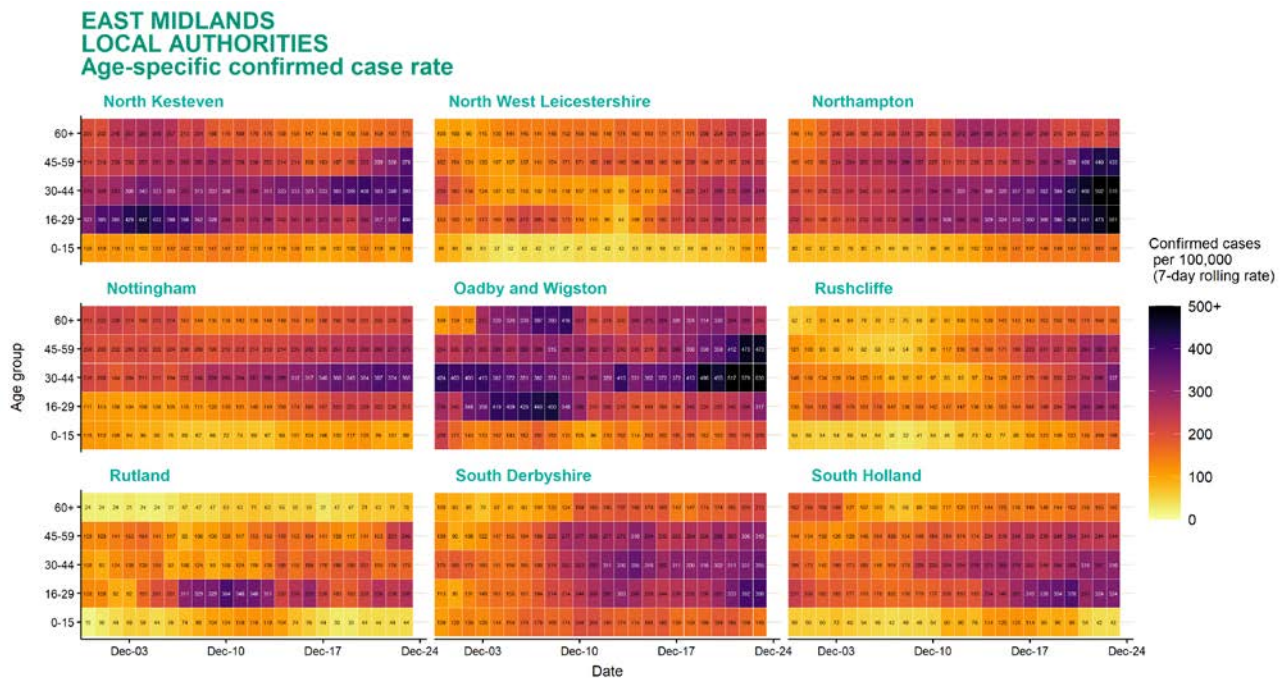
Age-stratified heatmap of weekly case rate by local authority for East Midlands : 30 Nov to 23 Dec 2020



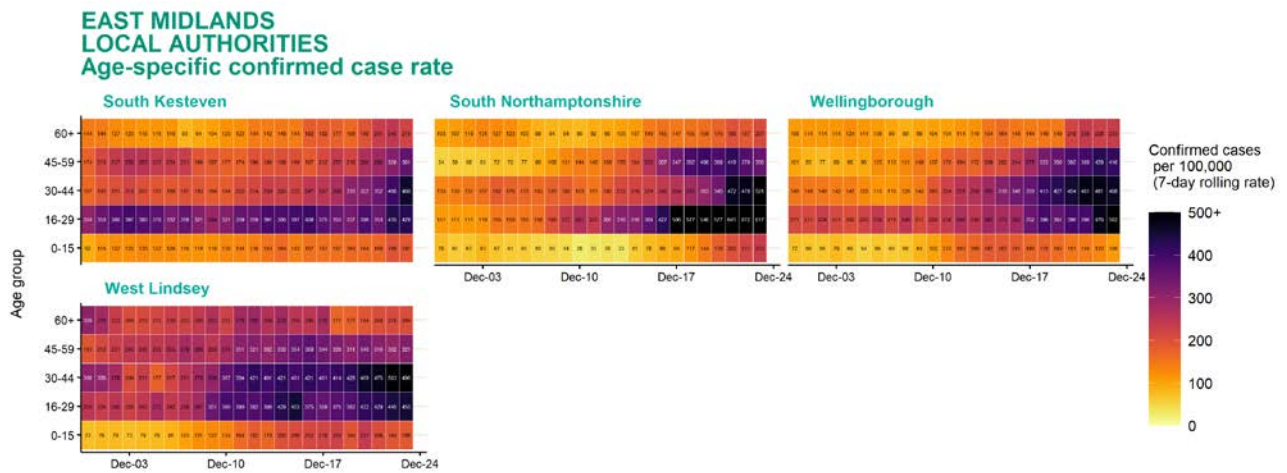
Source: Case data from SGSS. Produced by Outbreak Surveillance Team, PHE

Contains National Statistics data Â© Crown copyright and database right 2020

Age-stratified heatmap of weekly case rate by local authority for East Midlands : 30 Nov to 23 Dec 2020



Age-stratified heatmap of weekly case rate by local authority for East Midlands : 30 Nov to 23 Dec 2020

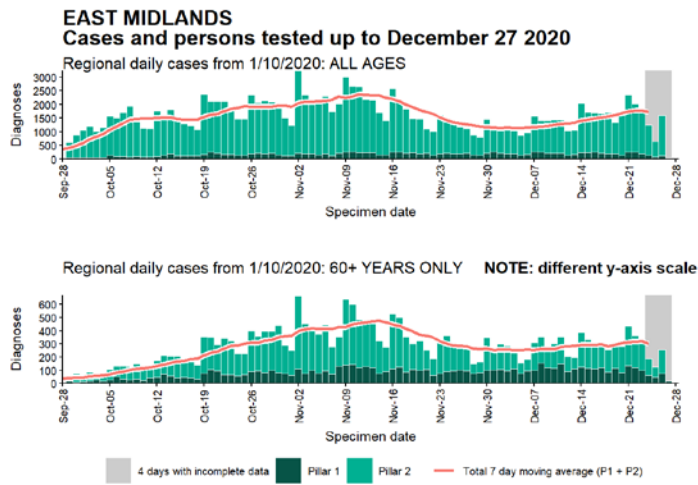


Date

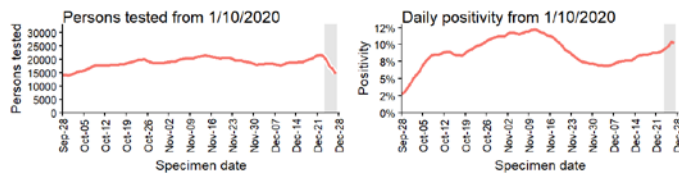
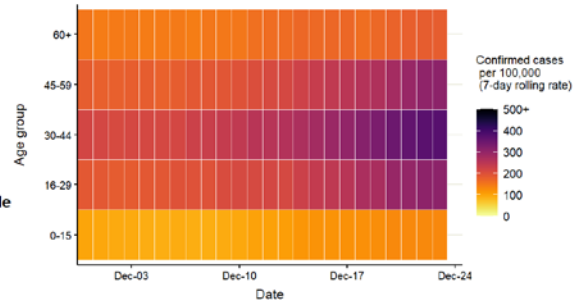
Source: Case data from SGSS. Produced by Outbreak Surveillance Team, PHE

Contains National Statistics data Â© Crown copyright and database right 2020

Regional case numbers, testing numbers and positivity, East Midlands : 01 Sep to 27 Dec 2020

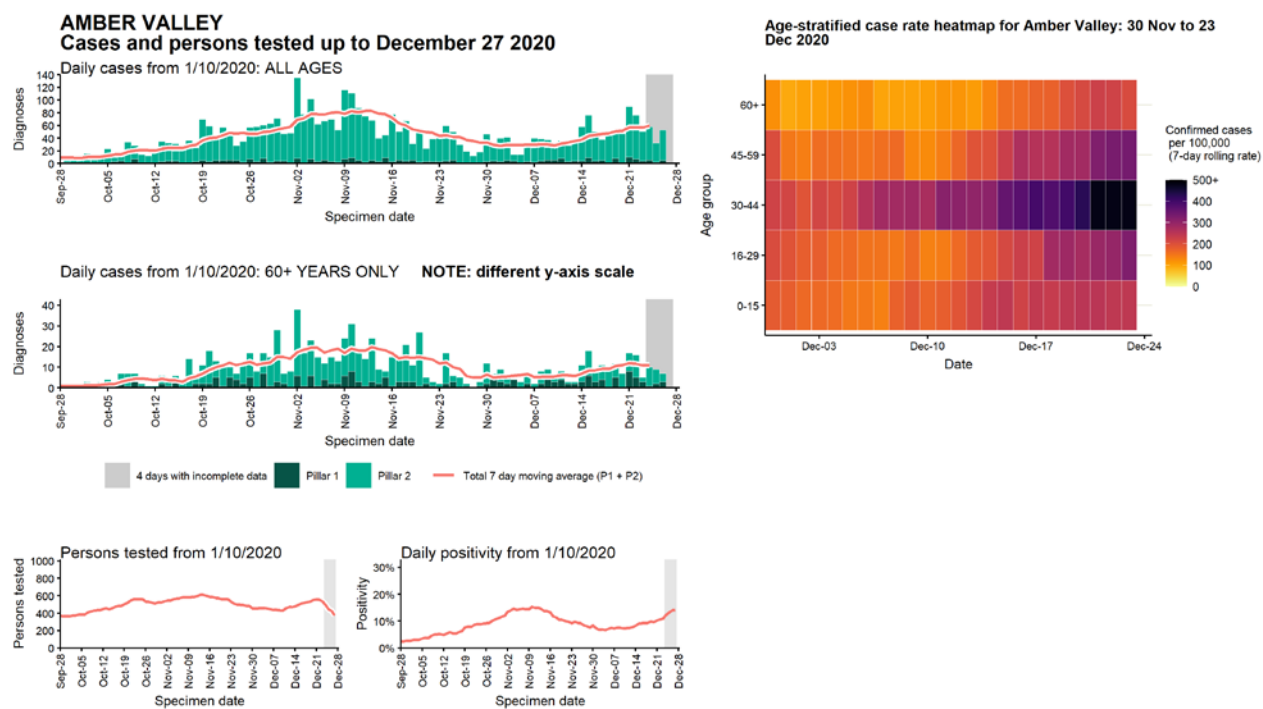


Regional age-stratified case rate heatmap for East Midlands: 30 Nov to 23 Dec 2020



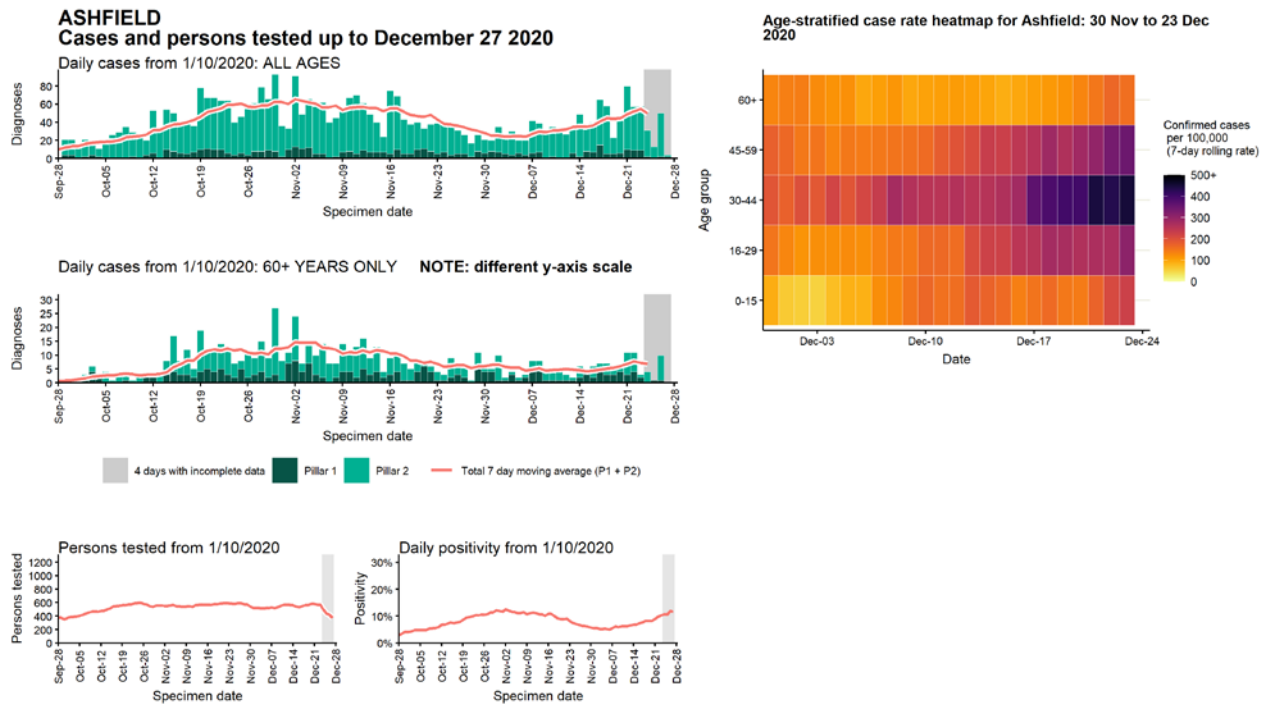
Data from SGSS. Produced by Outbreak Surveillance Team, PHE

Case numbers, testing numbers and positivity, Amber Valley : 01 Sep to 27 Dec 2020



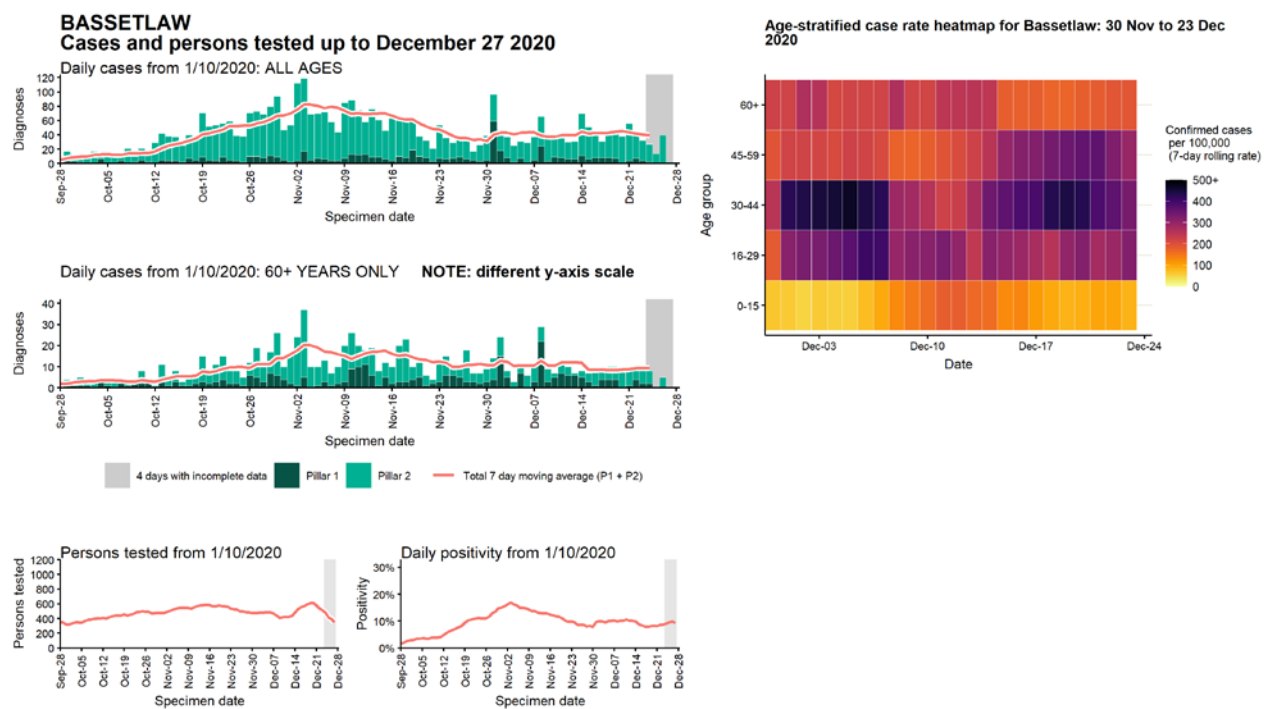
Data from SGSS. Produced by Outbreak Surveillance Team, PHE

Case numbers, testing numbers and positivity, Ashfield : 01 Sep to 27 Dec 2020



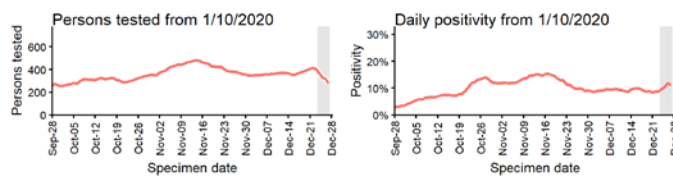
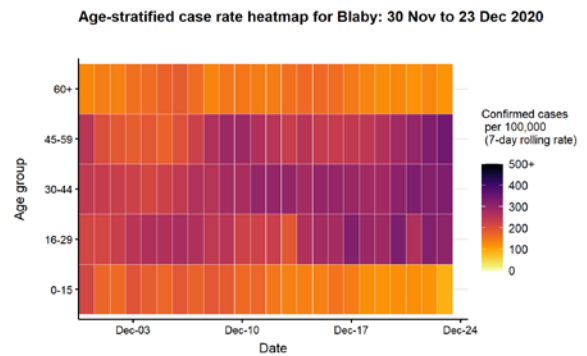
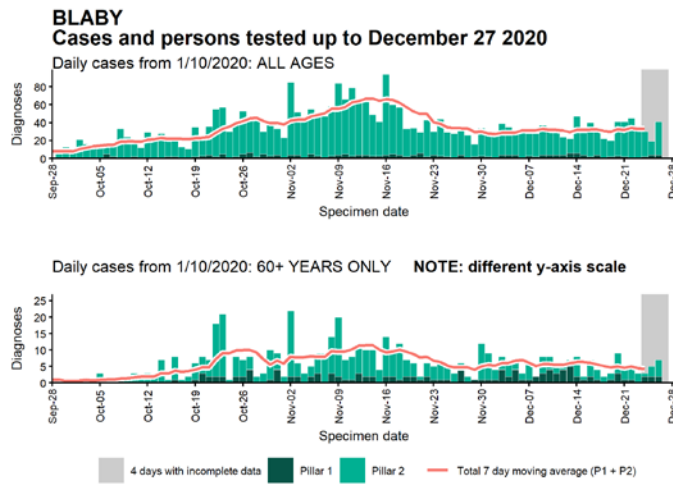
Data from SGSS. Produced by Outbreak Surveillance Team, PHE

Case numbers, testing numbers and positivity, Bassetlaw : 01 Sep to 27 Dec 2020



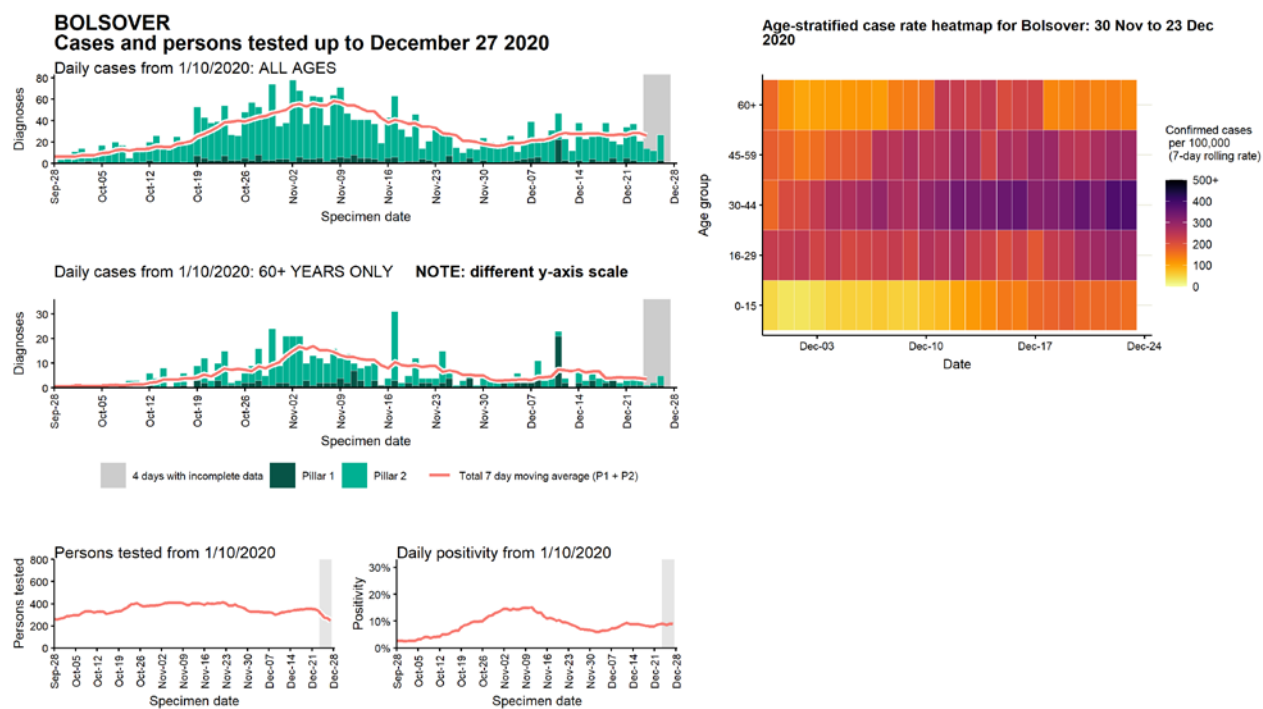
Data from SGSS. Produced by Outbreak Surveillance Team, PHE

Case numbers, testing numbers and positivity, Blaby : 01 Sep to 27 Dec 2020



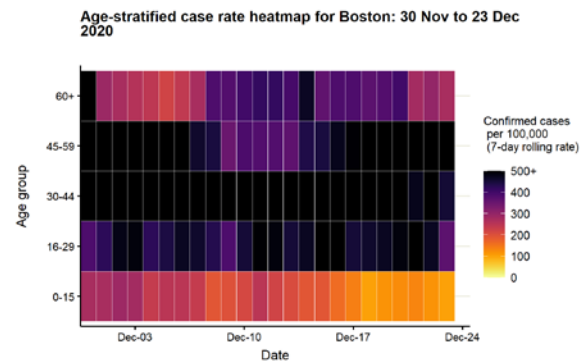
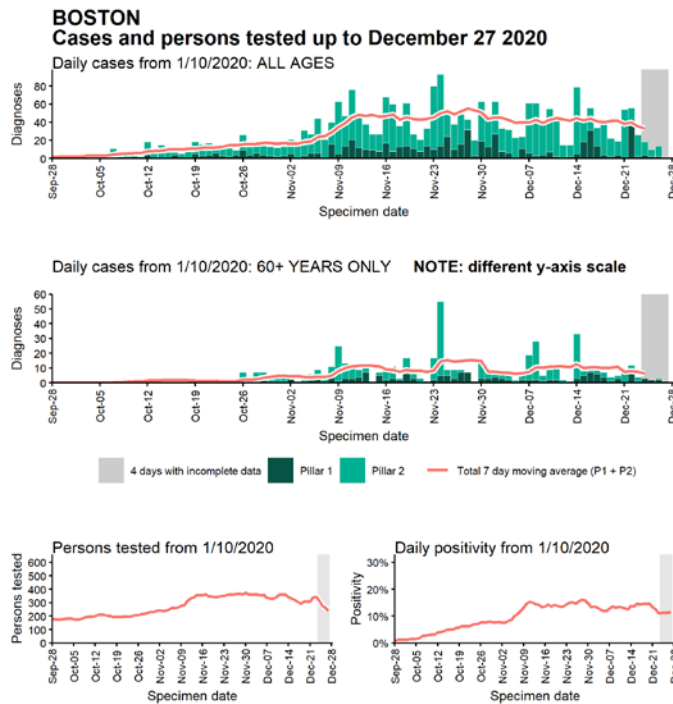
Data from SGSS. Produced by Outbreak Surveillance Team, PHE

Case numbers, testing numbers and positivity, Bolsover : 01 Sep to 27 Dec 2020



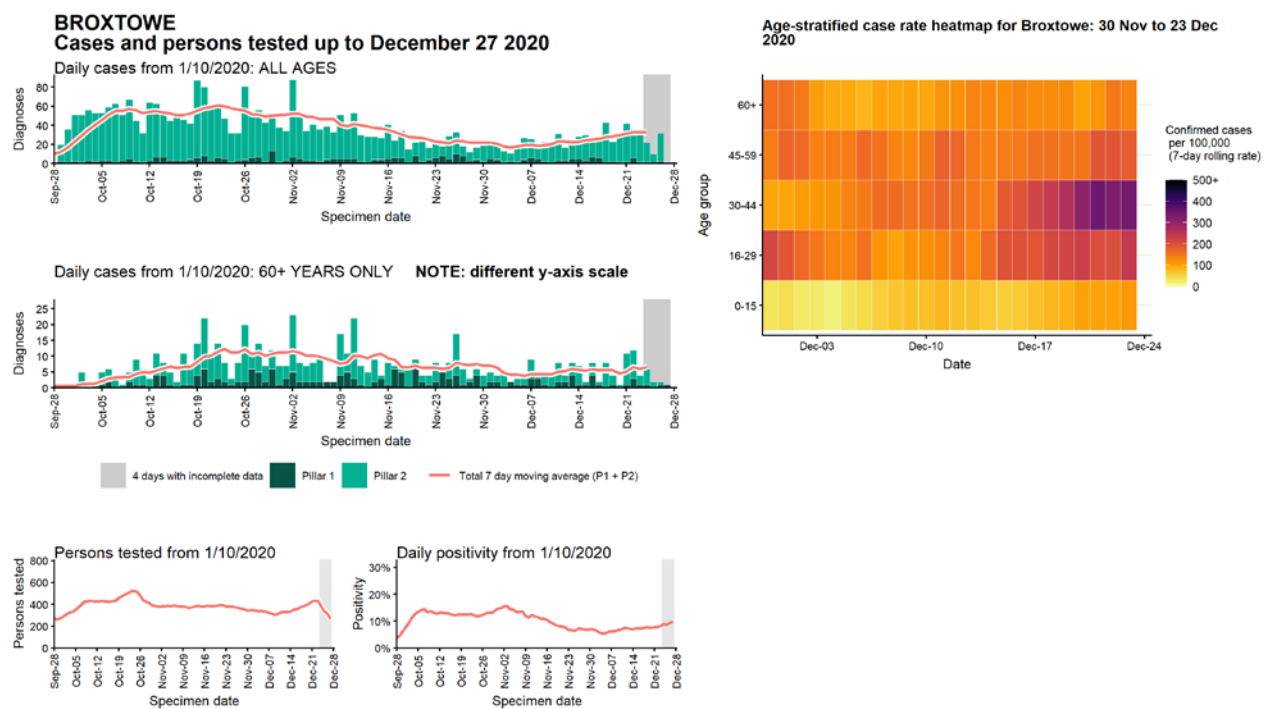
Data from SGSS. Produced by Outbreak Surveillance Team, PHE

Case numbers, testing numbers and positivity, Boston : 01 Sep to 27 Dec 2020



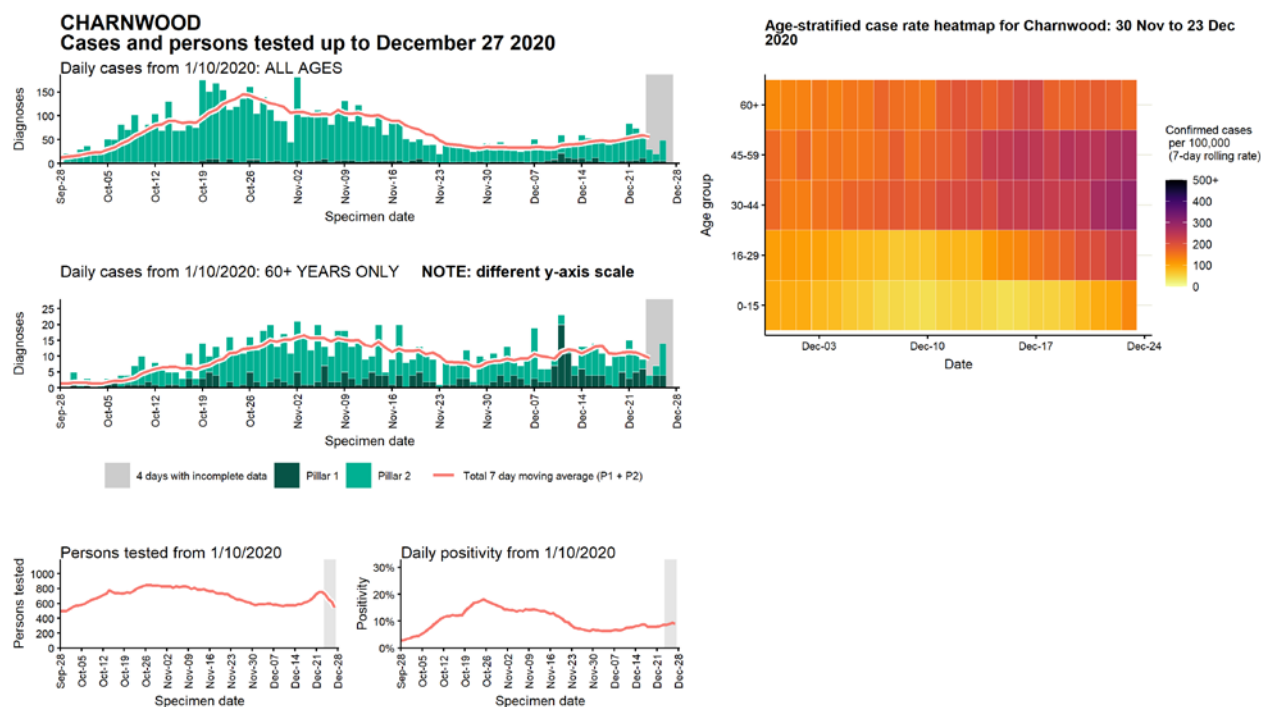
Data from SGSS. Produced by Outbreak Surveillance Team, PHE

Case numbers, testing numbers and positivity, Broxtowe : 01 Sep to 27 Dec 2020



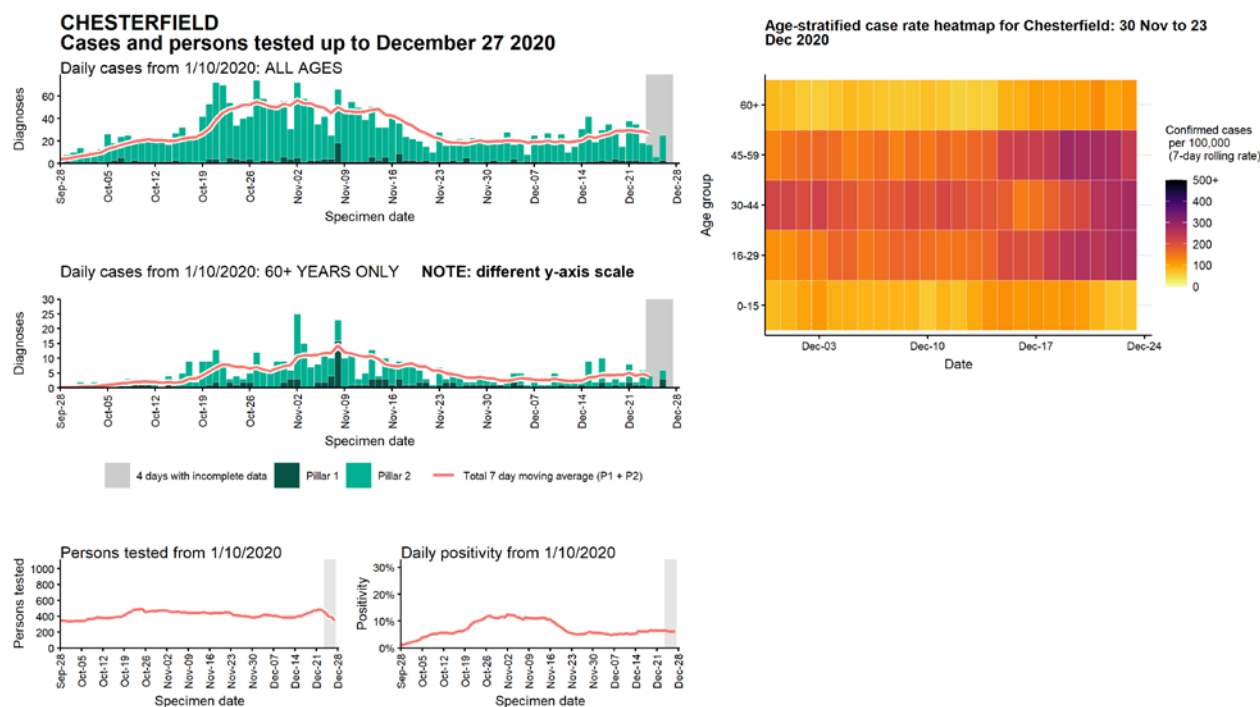
Data from SGSS. Produced by Outbreak Surveillance Team, PHE

Case numbers, testing numbers and positivity, Charnwood : 01 Sep to 27 Dec 2020



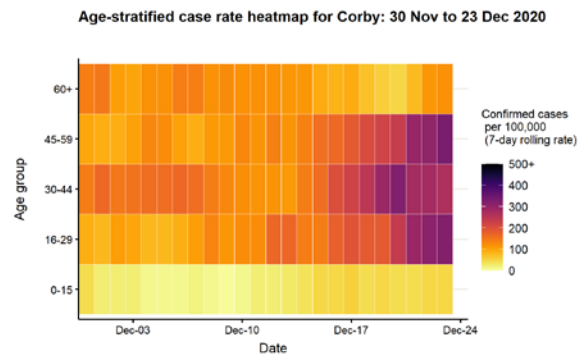
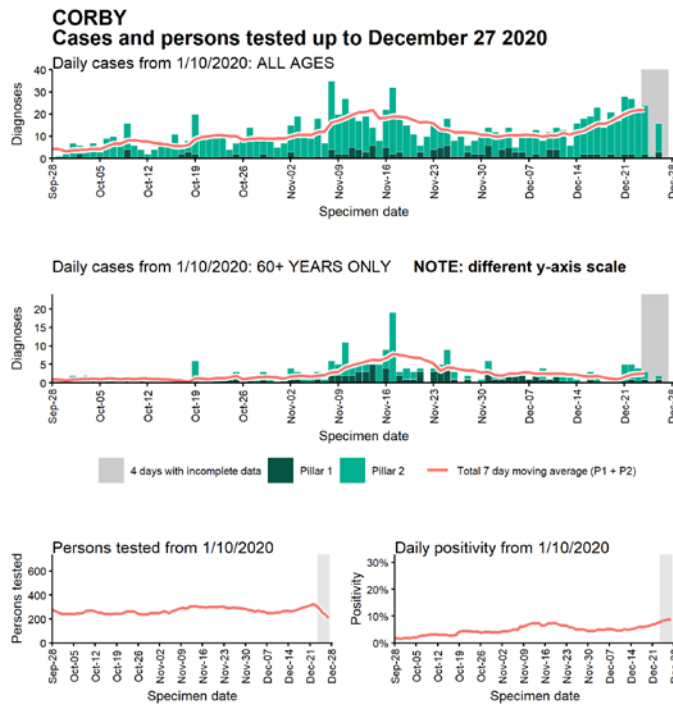
Data from SGSS. Produced by Outbreak Surveillance Team, PHE

Case numbers, testing numbers and positivity, Chesterfield : 01 Sep to 27 Dec 2020



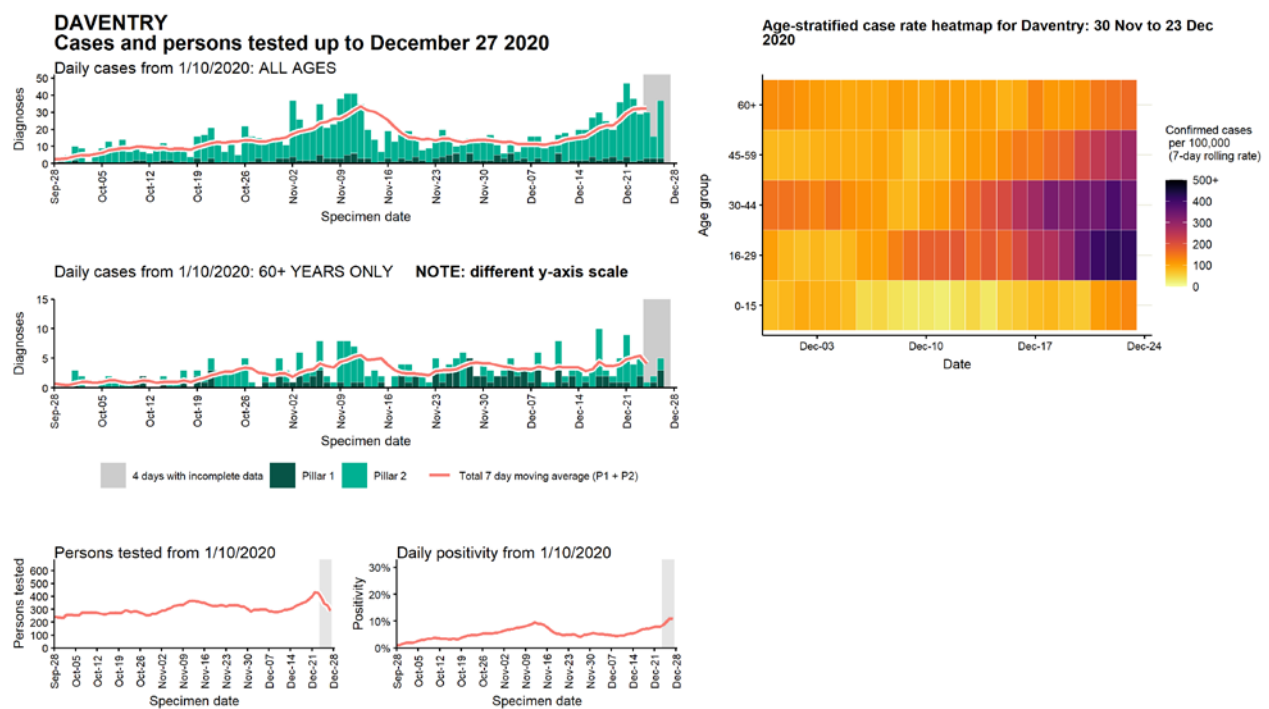
Data from SGSS. Produced by Outbreak Surveillance Team, PHE

Case numbers, testing numbers and positivity, Corby : 01 Sep to 27 Dec 2020



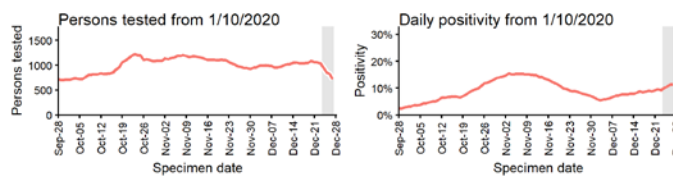
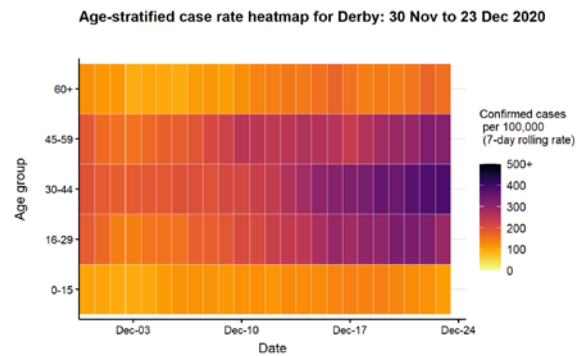
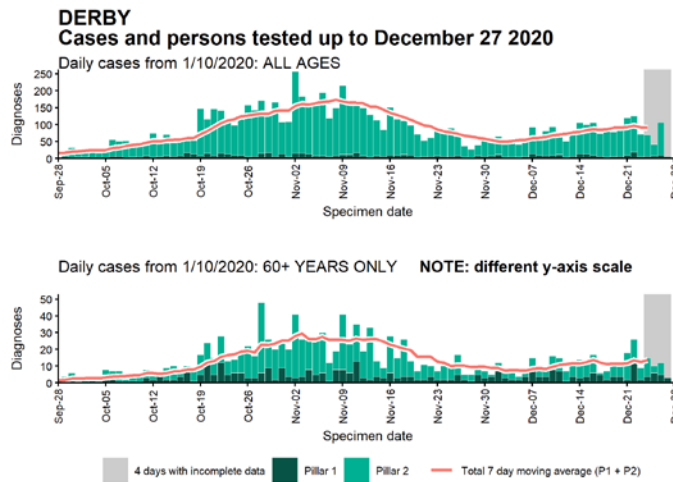
Data from SGSS. Produced by Outbreak Surveillance Team, PHE

Case numbers, testing numbers and positivity, Daventry : 01 Sep to 27 Dec 2020



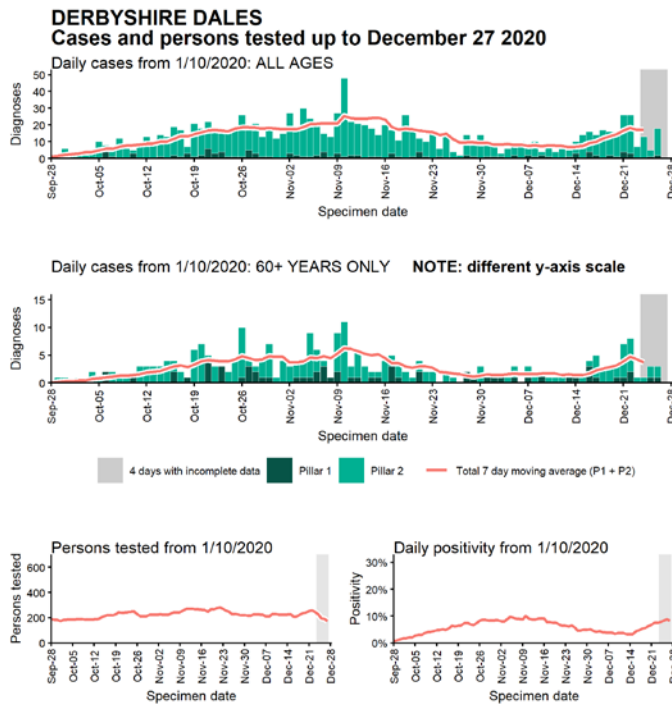
Data from SGSS. Produced by Outbreak Surveillance Team, PHE

Case numbers, testing numbers and positivity, Derby : 01 Sep to 27 Dec 2020

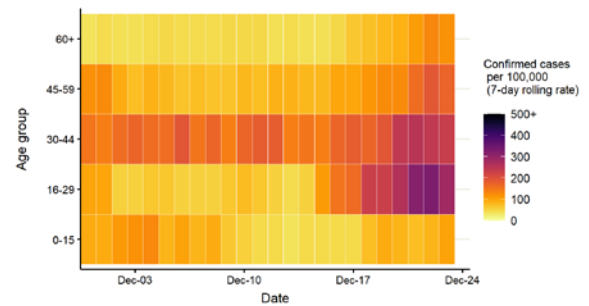


Data from SGSS. Produced by Outbreak Surveillance Team, PHE

Case numbers, testing numbers and positivity, Derbyshire Dales : 01 Sep to 27 Dec 2020

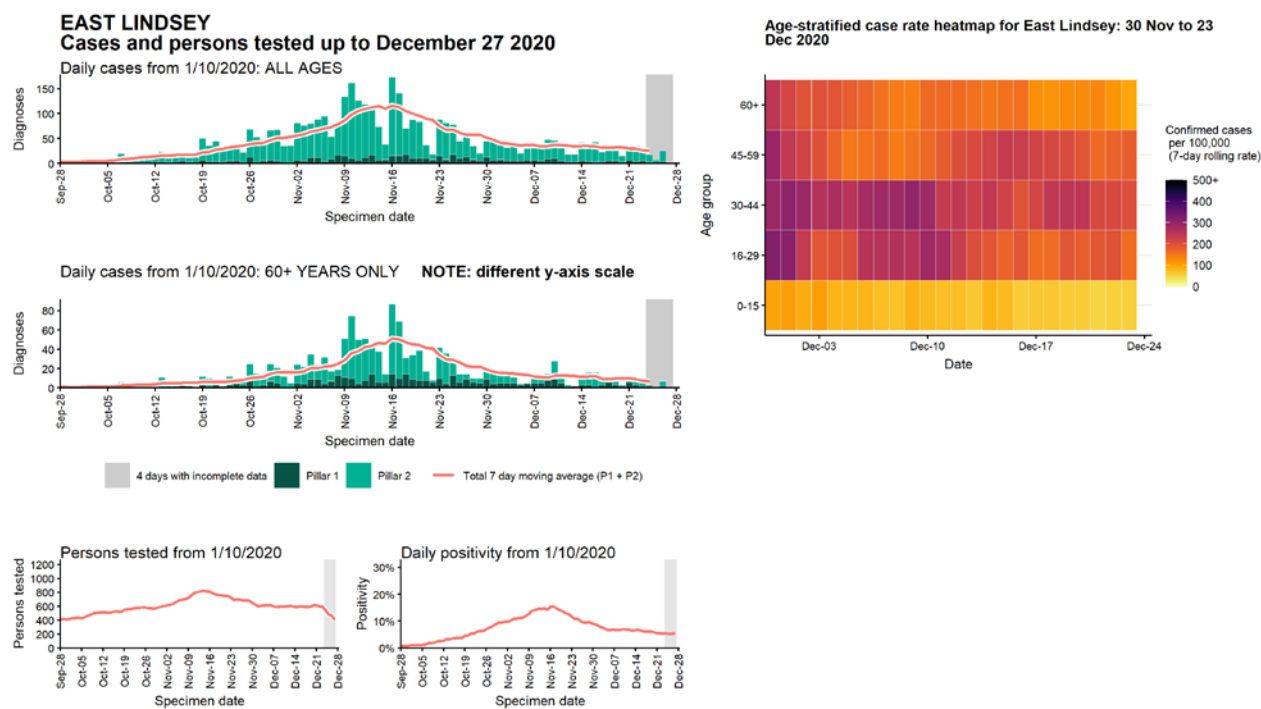


Age-stratified case rate heatmap for Derbyshire Dales: 30 Nov to 23 Dec 2020



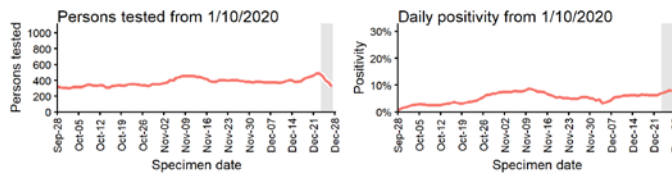
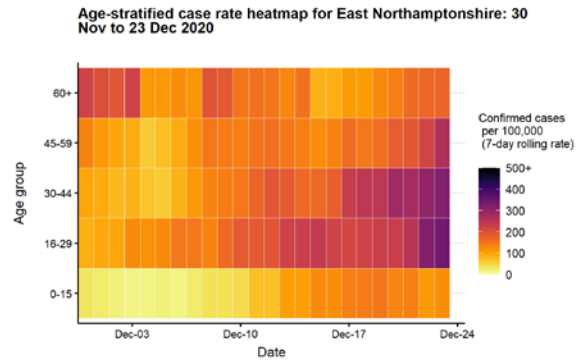
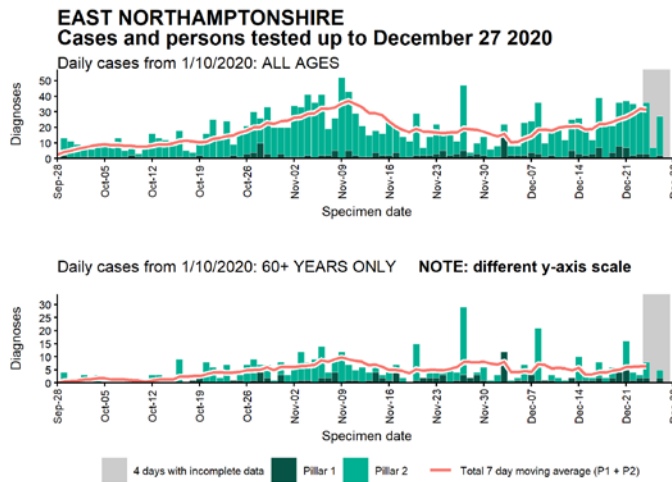
Data from SGSS. Produced by Outbreak Surveillance Team, PHE

Case numbers, testing numbers and positivity, East Lindsey : 01 Sep to 27 Dec 2020



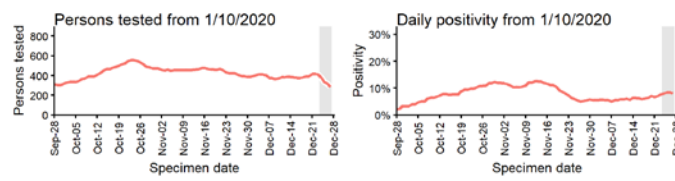
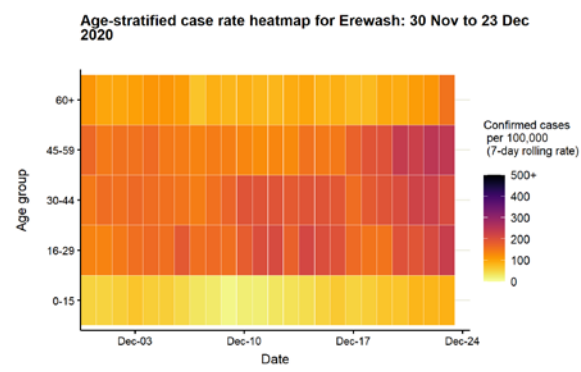
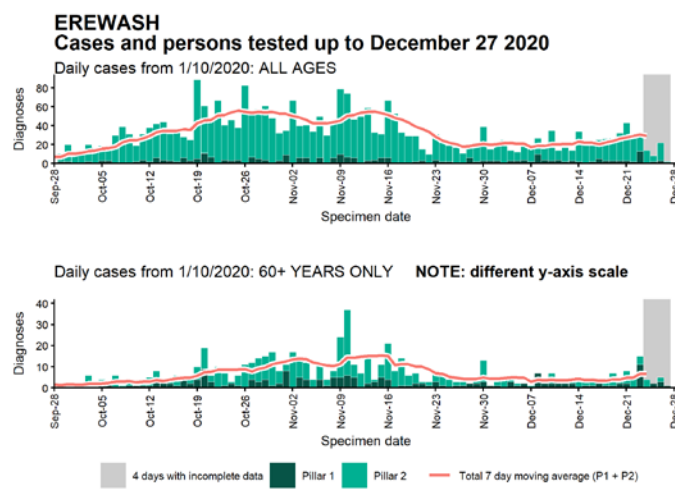
Data from SGSS. Produced by Outbreak Surveillance Team, PHE

Case numbers, testing numbers and positivity, East Northamptonshire : 01 Sep to 27 Dec 2020



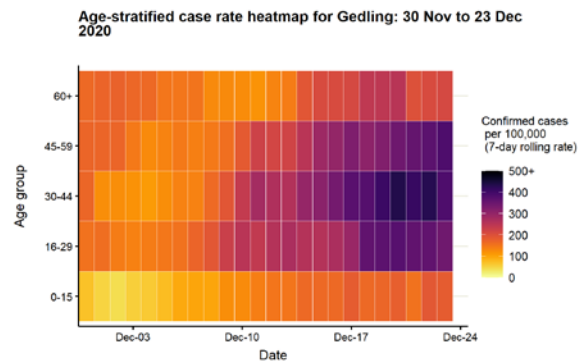
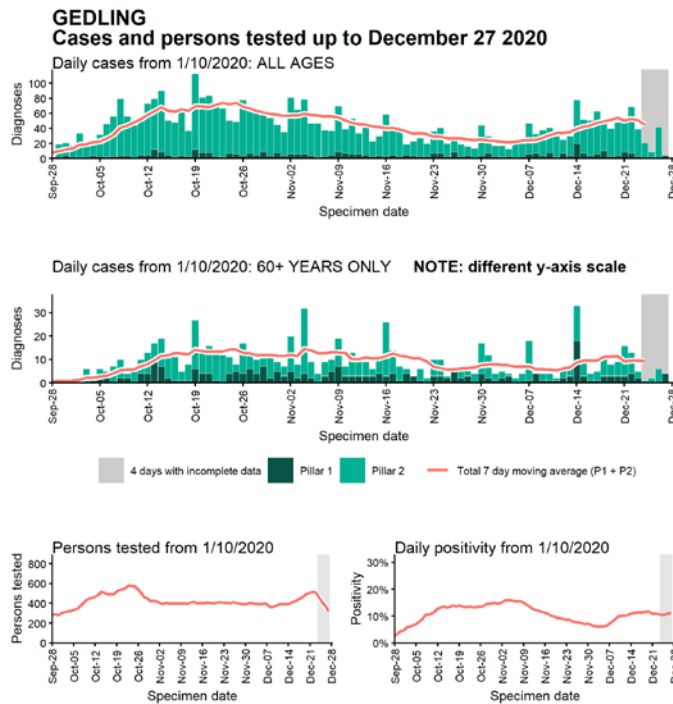
Data from SGSS. Produced by Outbreak Surveillance Team, PHE

Case numbers, testing numbers and positivity, Erewash : 01 Sep to 27 Dec 2020



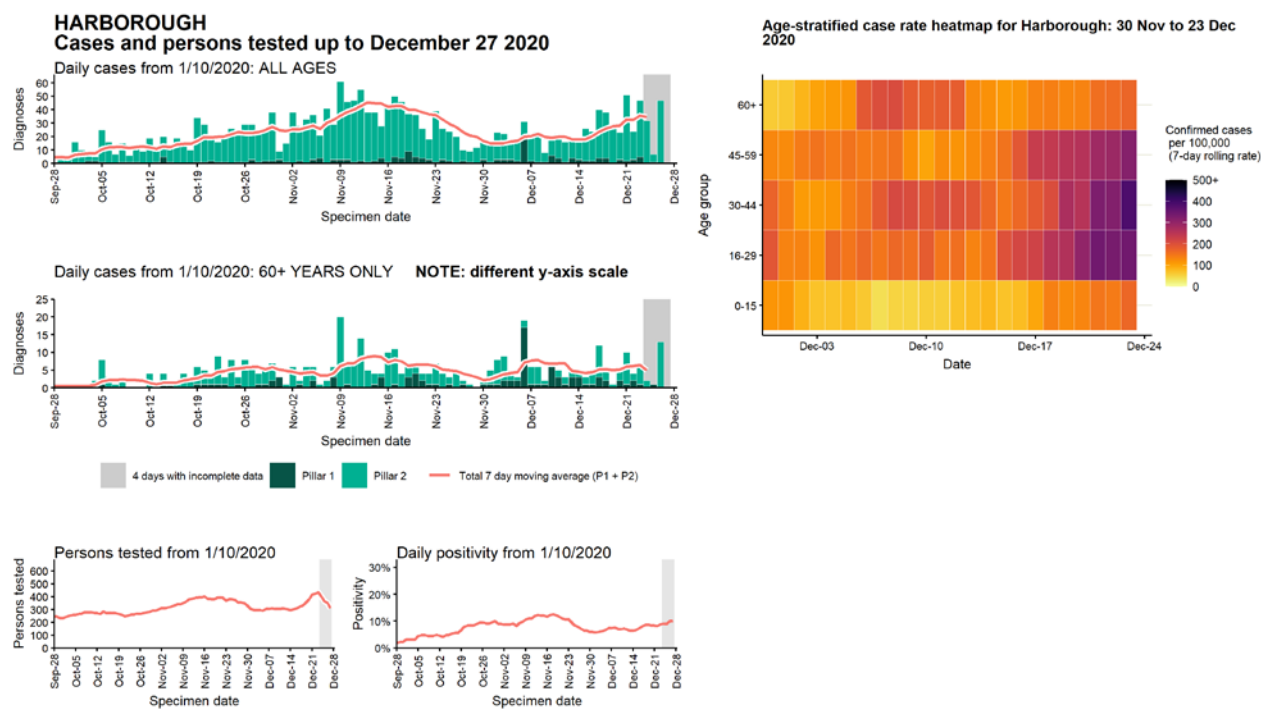
Data from SGSS. Produced by Outbreak Surveillance Team, PHE

Case numbers, testing numbers and positivity, Gedling : 01 Sep to 27 Dec 2020



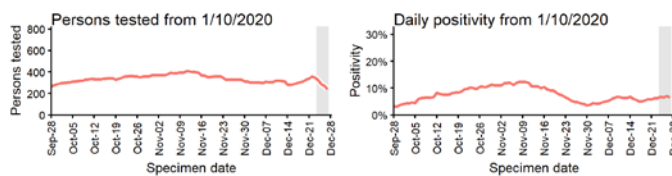
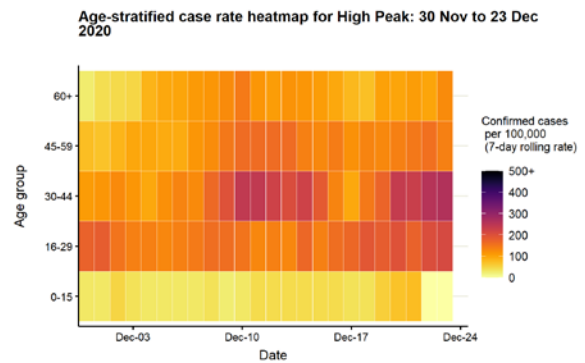
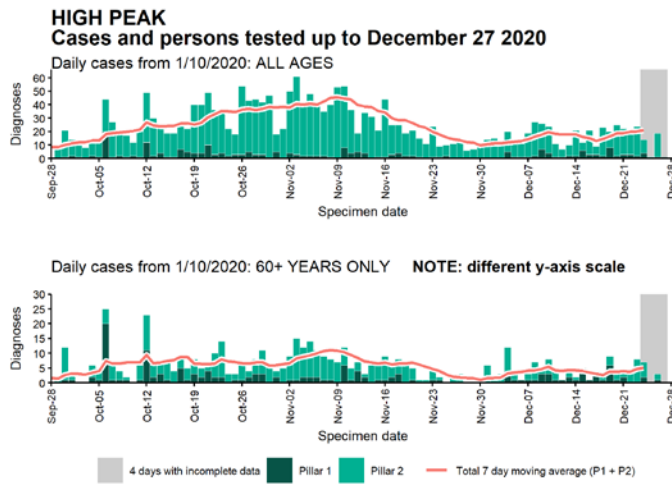
Data from SGSS. Produced by Outbreak Surveillance Team, PHE

Case numbers, testing numbers and positivity, Harborough : 01 Sep to 27 Dec 2020



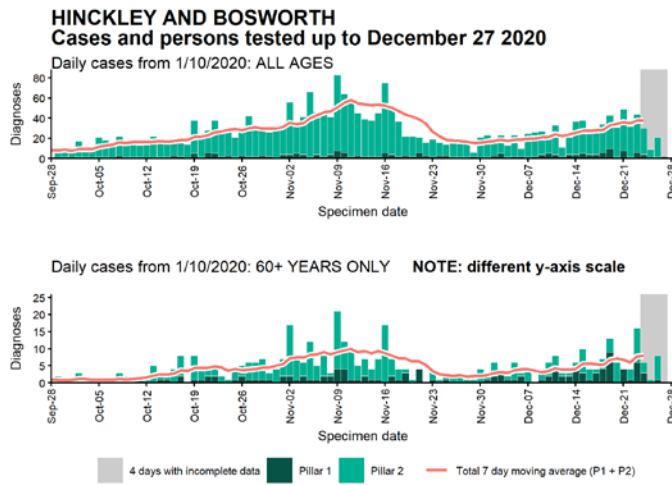
Data from SGSS. Produced by Outbreak Surveillance Team, PHE

Case numbers, testing numbers and positivity, High Peak : 01 Sep to 27 Dec 2020

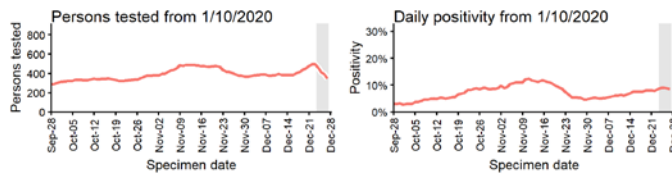
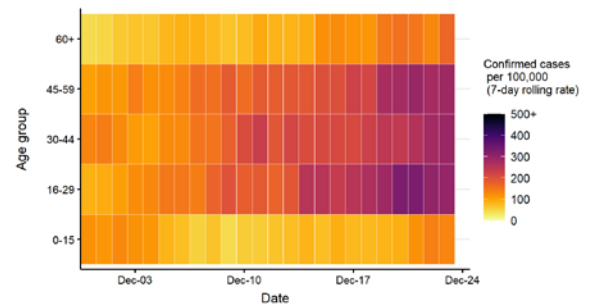


Data from SGSS. Produced by Outbreak Surveillance Team, PHE

Case numbers, testing numbers and positivity, Hinckley and Bosworth : 01 Sep to 27 Dec 2020

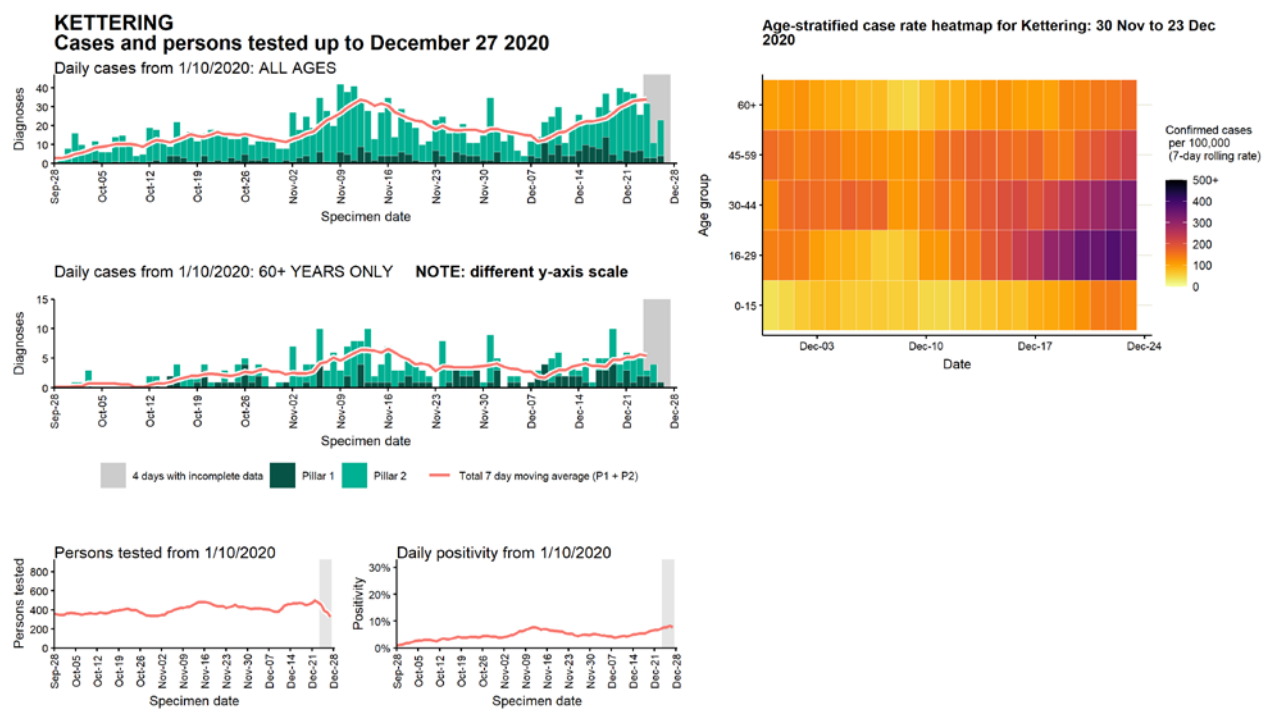


Age-stratified case rate heatmap for Hinckley and Bosworth: 30 Nov to 23 Dec 2020



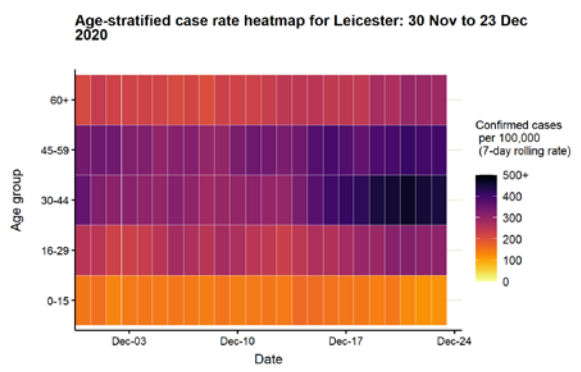
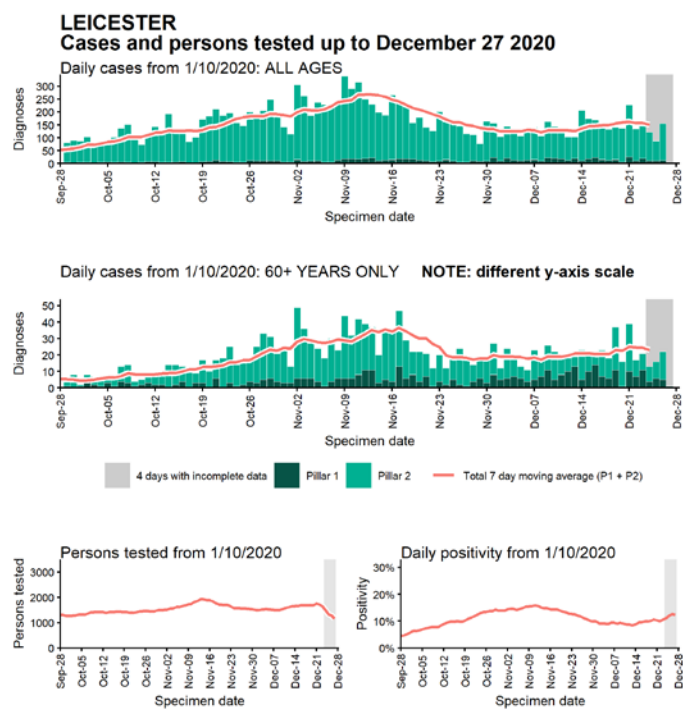
Data from SGSS. Produced by Outbreak Surveillance Team, PHE

Case numbers, testing numbers and positivity, Kettering : 01 Sep to 27 Dec 2020



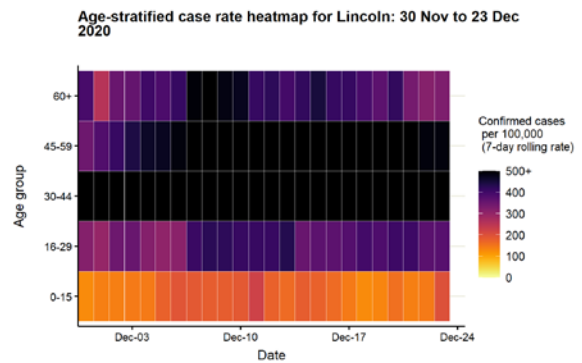
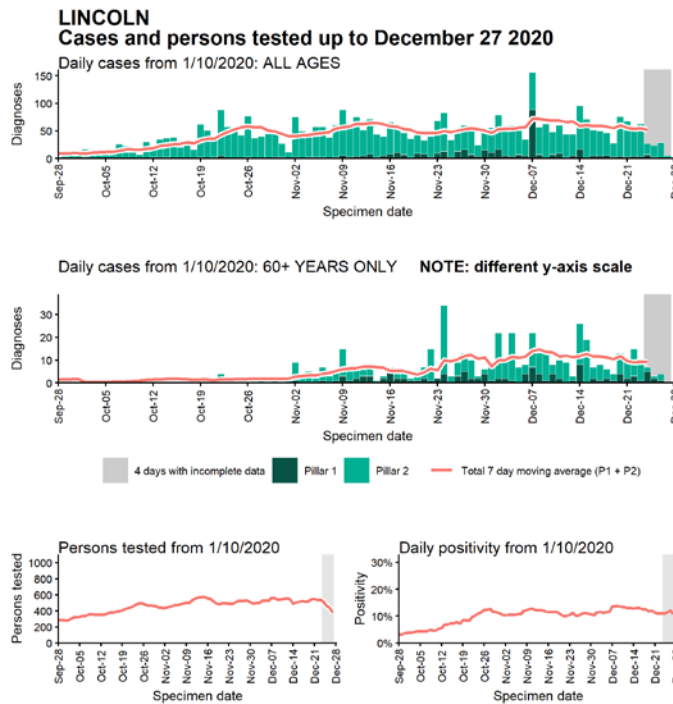
Data from SGSS. Produced by Outbreak Surveillance Team, PHE

Case numbers, testing numbers and positivity, Leicester : 01 Sep to 27 Dec 2020



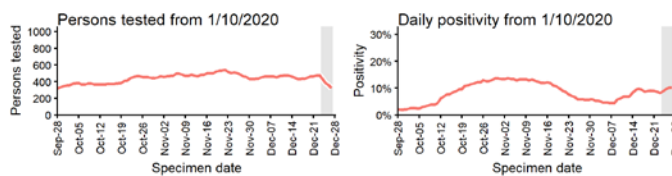
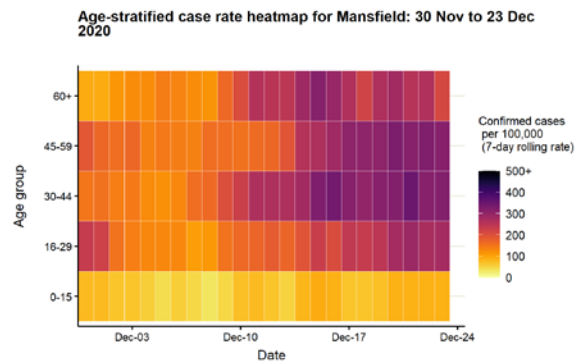
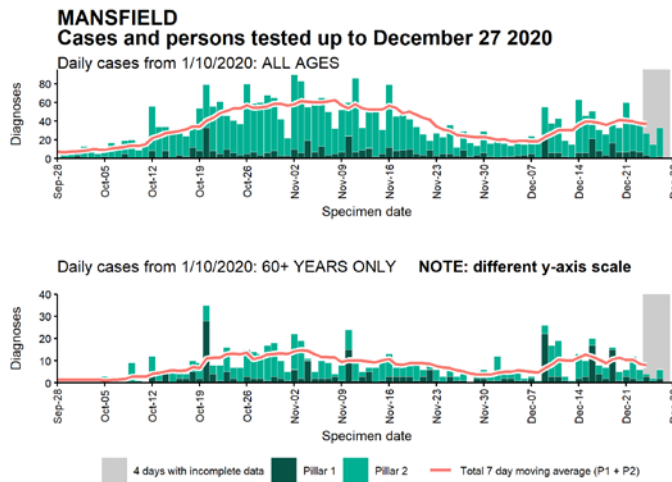
Data from SGSS. Produced by Outbreak Surveillance Team, PHE

Case numbers, testing numbers and positivity, Lincoln : 01 Sep to 27 Dec 2020



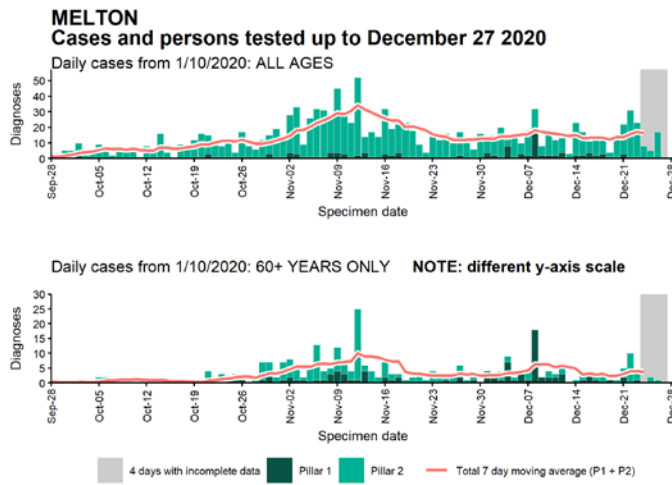
Data from SGSS. Produced by Outbreak Surveillance Team, PHE

Case numbers, testing numbers and positivity, Mansfield : 01 Sep to 27 Dec 2020

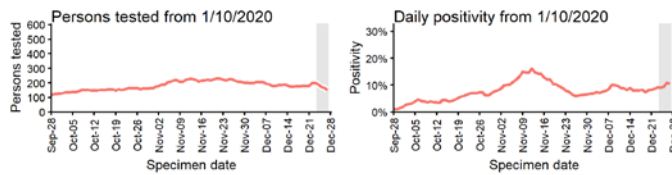
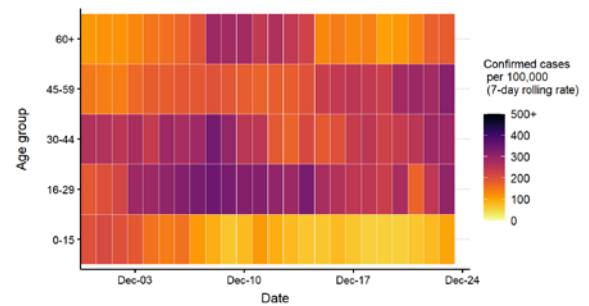


Data from SGSS. Produced by Outbreak Surveillance Team, PHE

Case numbers, testing numbers and positivity, Melton : 01 Sep to 27 Dec 2020

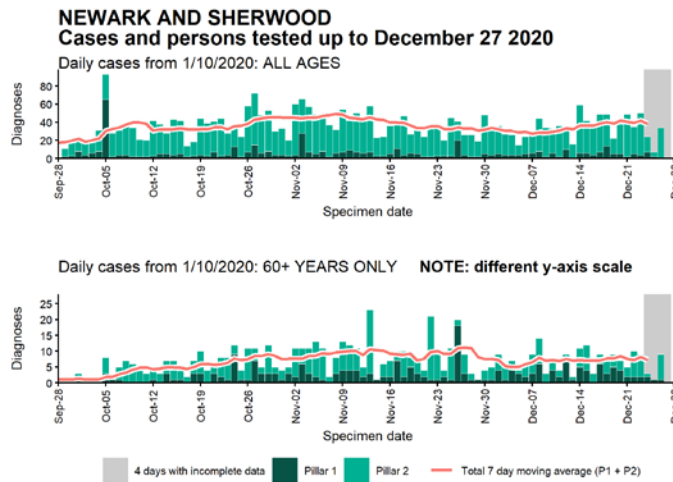


Age-stratified case rate heatmap for Melton: 30 Nov to 23 Dec 2020

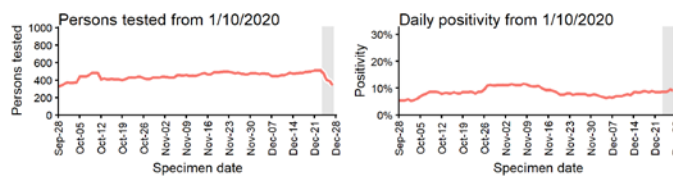
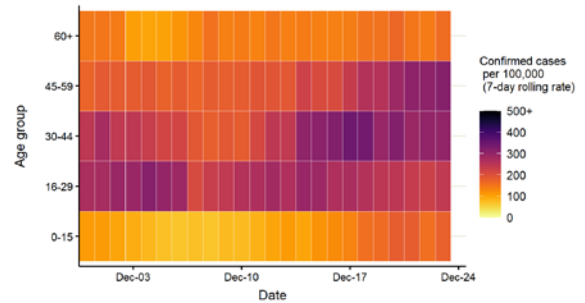


Data from SGSS. Produced by Outbreak Surveillance Team, PHE

Case numbers, testing numbers and positivity, Newark and Sherwood : 01 Sep to 27 Dec 2020

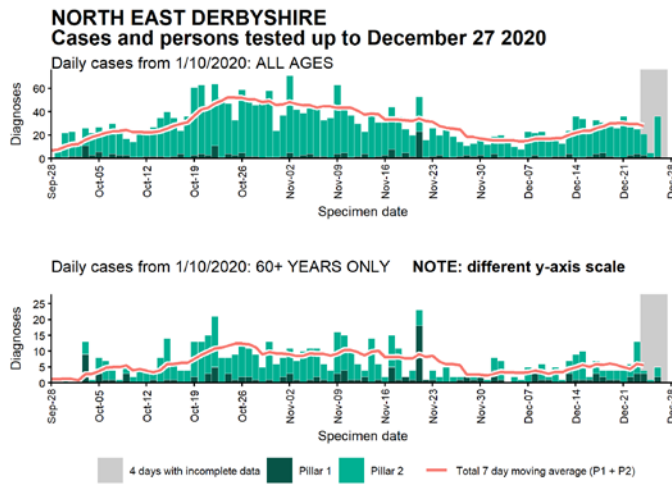


Age-stratified case rate heatmap for Newark and Sherwood: 30 Nov to 23 Dec 2020

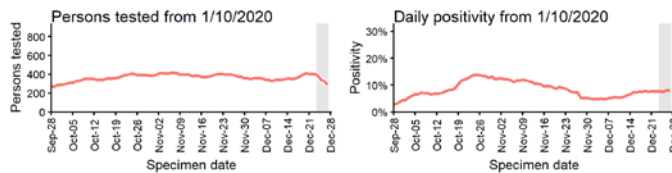
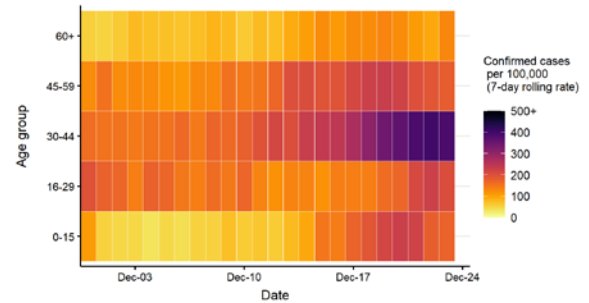


Data from SGSS. Produced by Outbreak Surveillance Team, PHE

Case numbers, testing numbers and positivity, North East Derbyshire : 01 Sep to 27 Dec 2020

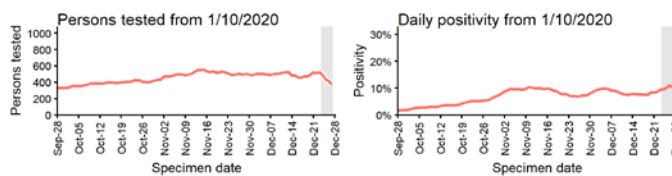
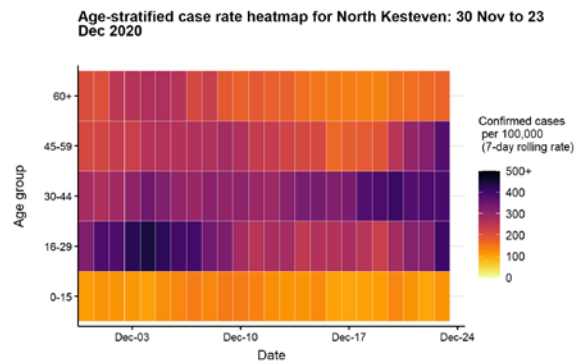
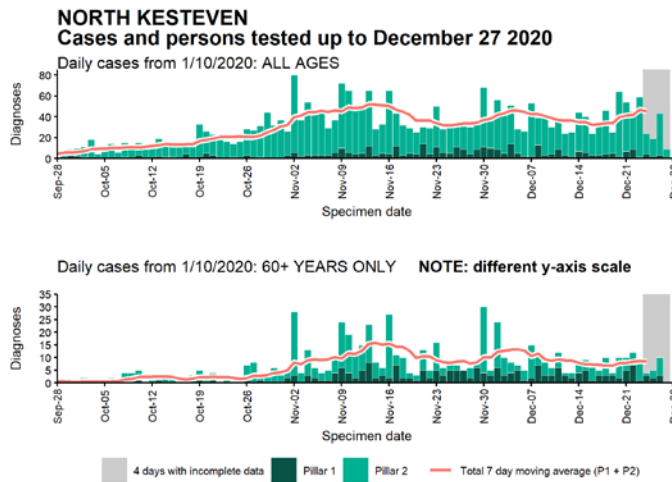


Age-stratified case rate heatmap for North East Derbyshire: 30 Nov to 23 Dec 2020



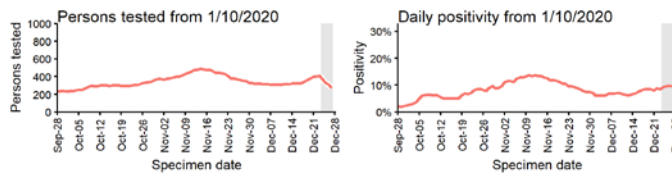
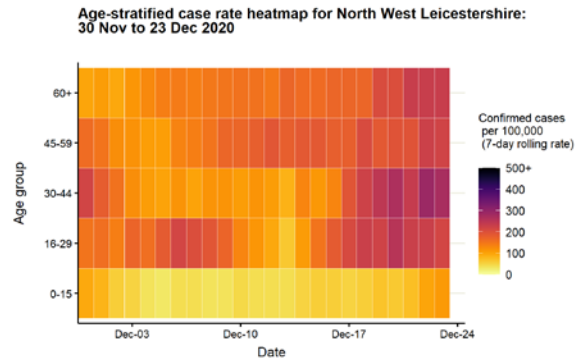
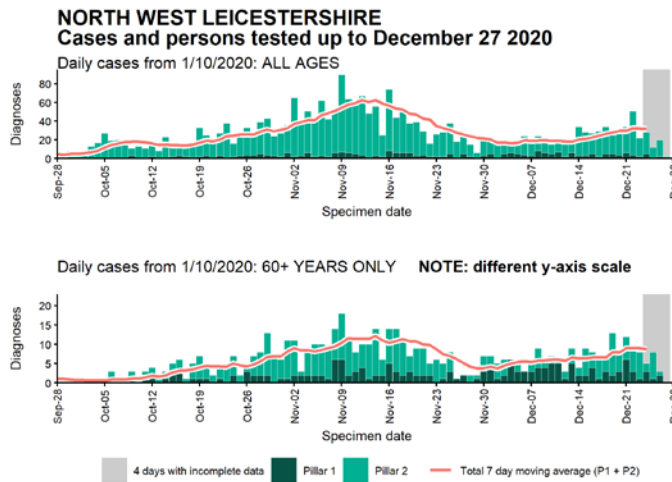
Data from SGSS. Produced by Outbreak Surveillance Team, PHE

Case numbers, testing numbers and positivity, North Kesteven : 01 Sep to 27 Dec 2020



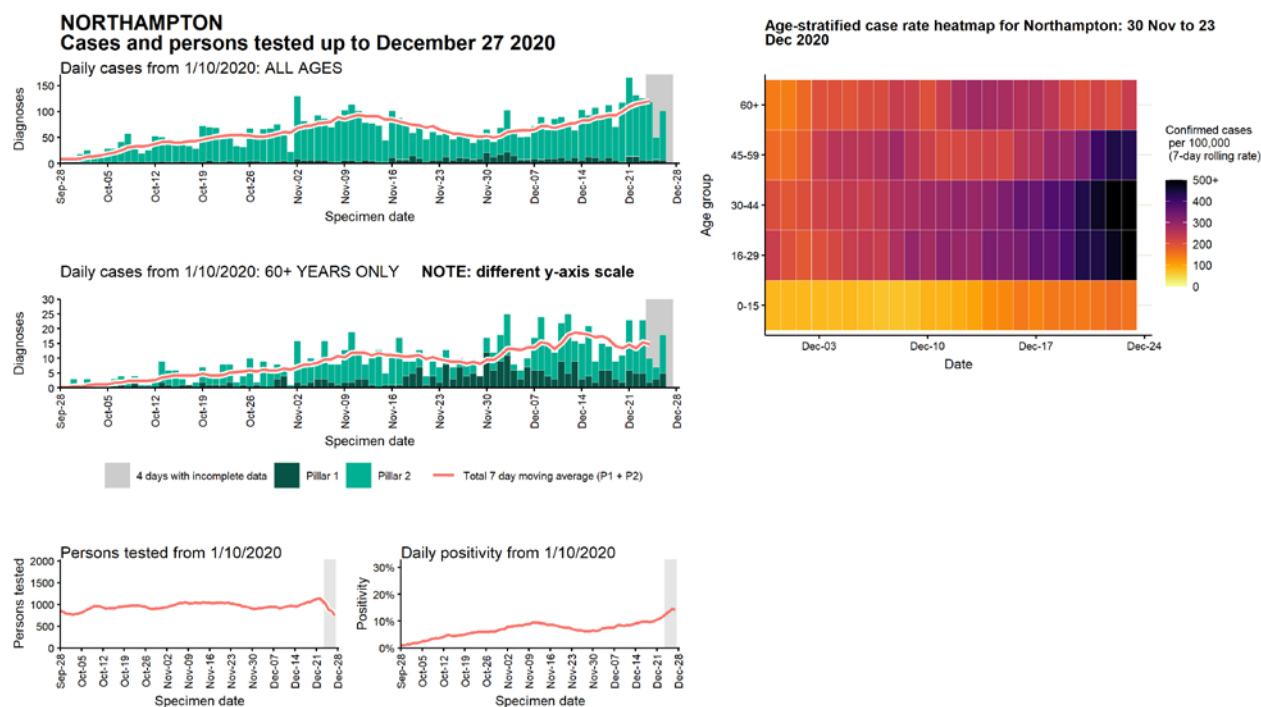
Data from SGSS. Produced by Outbreak Surveillance Team, PHE

Case numbers, testing numbers and positivity, North West Leicestershire : 01 Sep to 27 Dec 2020



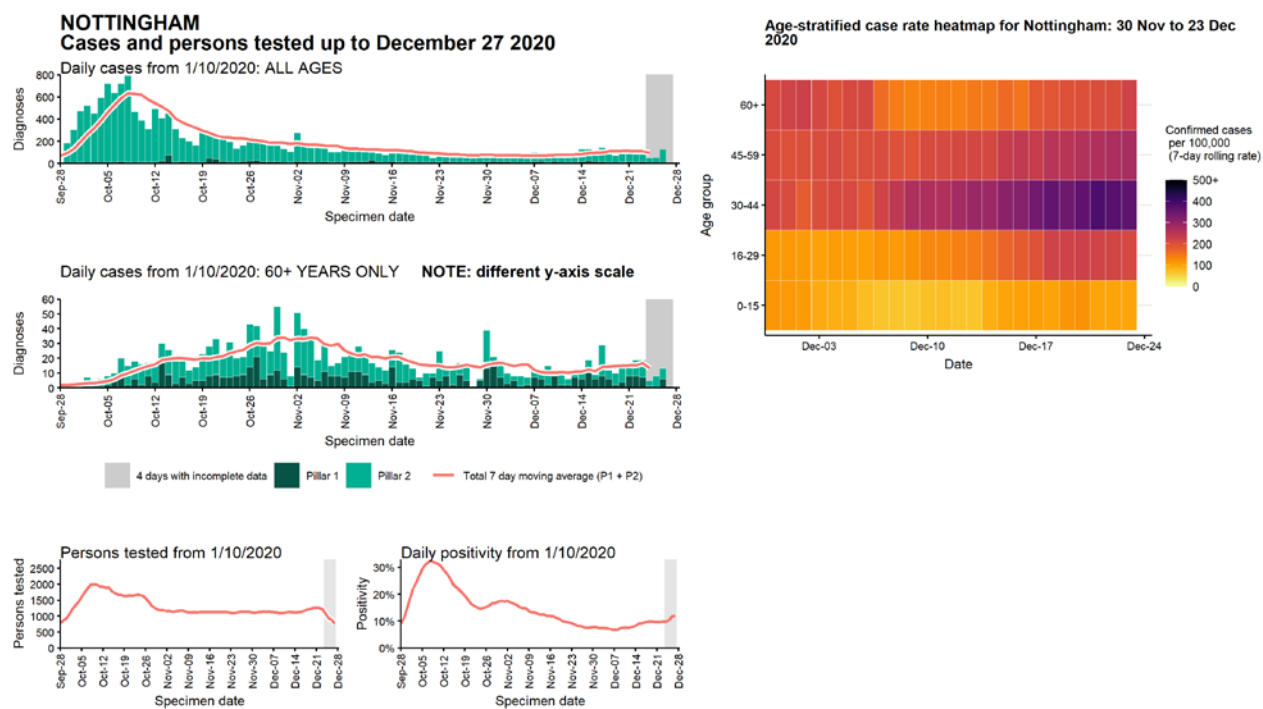
Data from SGSS. Produced by Outbreak Surveillance Team, PHE

Case numbers, testing numbers and positivity, Northampton : 01 Sep to 27 Dec 2020



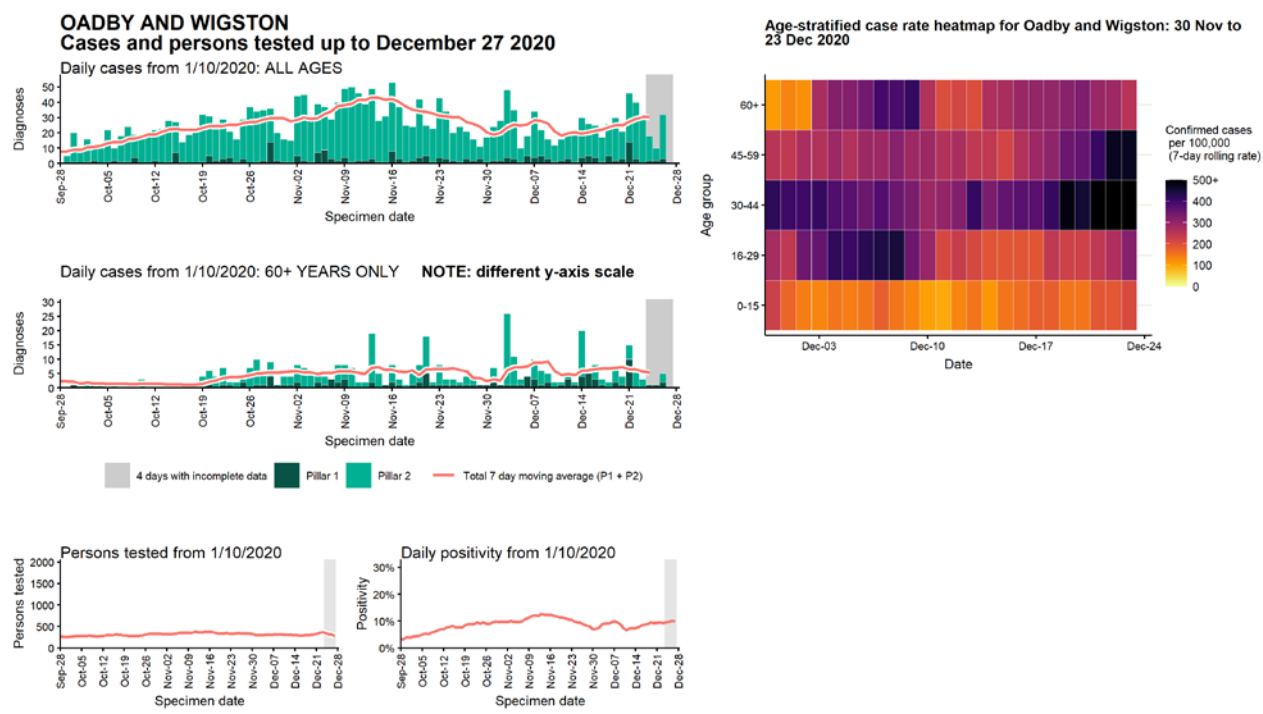
Data from SGSS. Produced by Outbreak Surveillance Team, PHE

Case numbers, testing numbers and positivity, Nottingham : 01 Sep to 27 Dec 2020



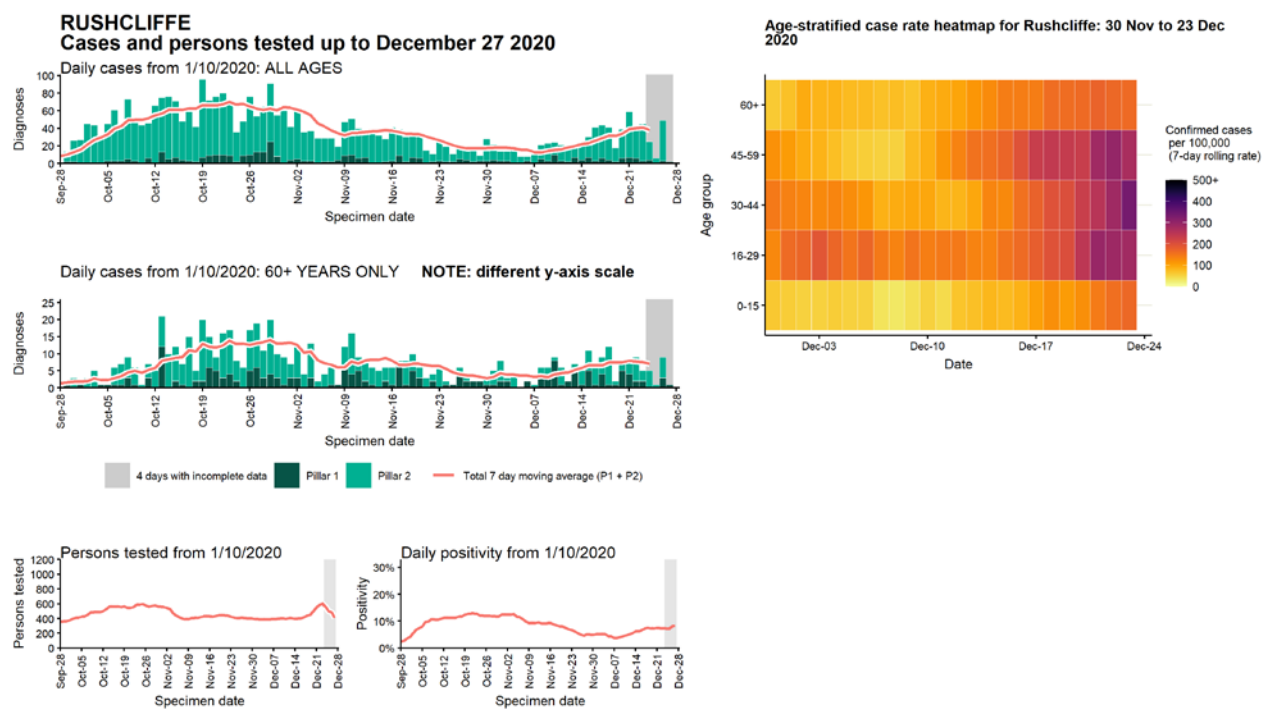
Data from SGSS. Produced by Outbreak Surveillance Team, PHE

Case numbers, testing numbers and positivity, Oadby and Wigston : 01 Sep to 27 Dec 2020



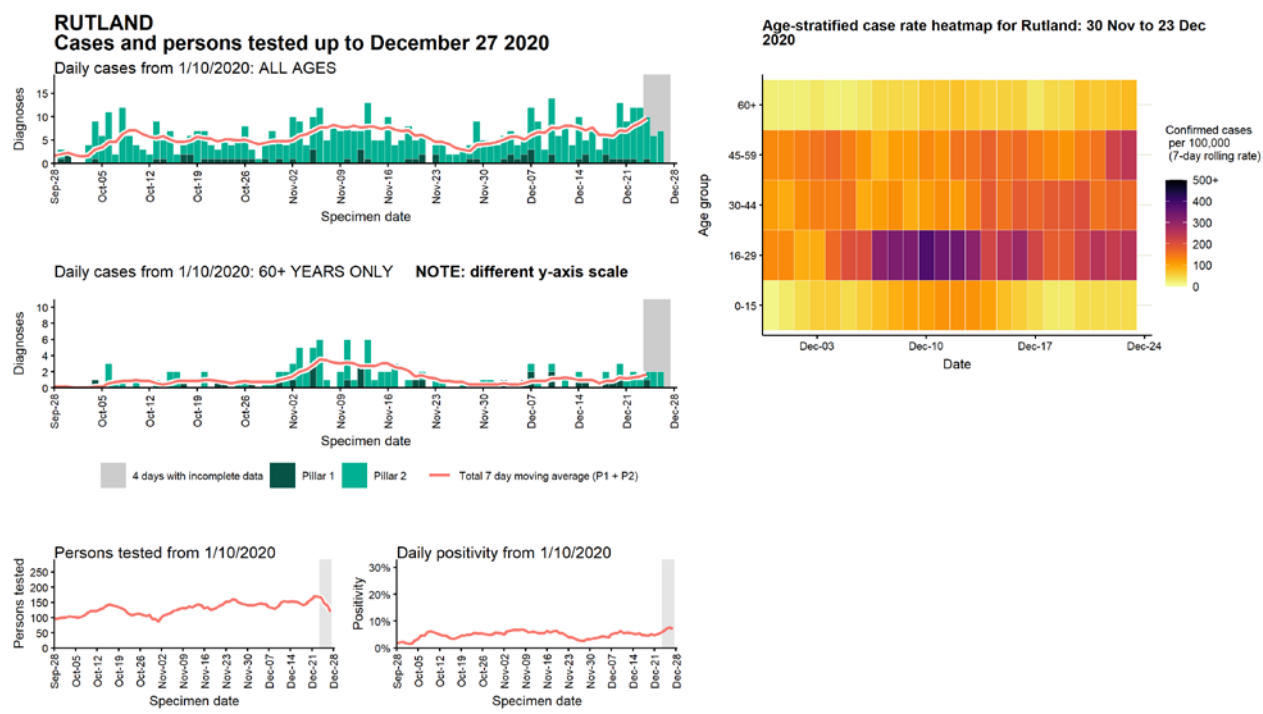
Data from SGSS. Produced by Outbreak Surveillance Team, PHE

Case numbers, testing numbers and positivity, Rushcliffe : 01 Sep to 27 Dec 2020



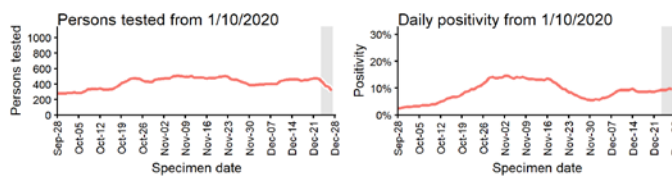
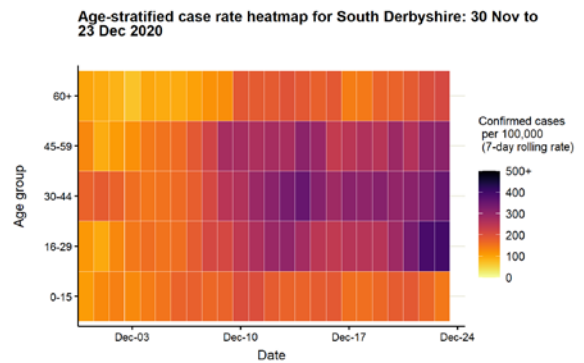
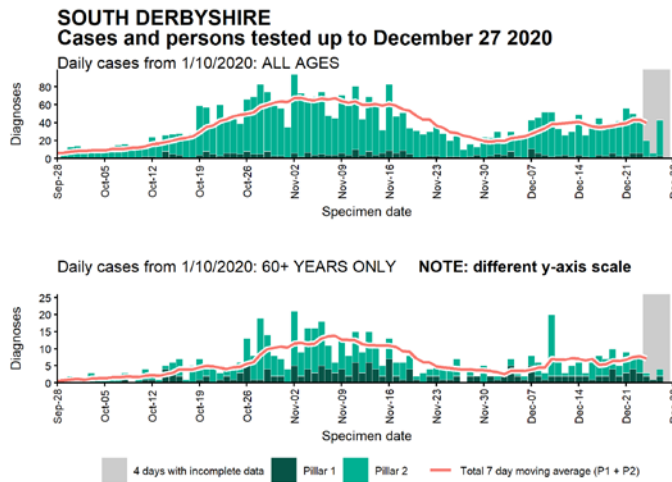
Data from SGSS. Produced by Outbreak Surveillance Team, PHE

Case numbers, testing numbers and positivity, Rutland : 01 Sep to 27 Dec 2020



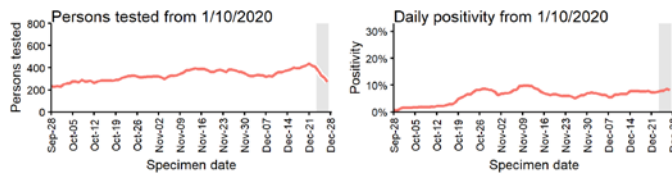
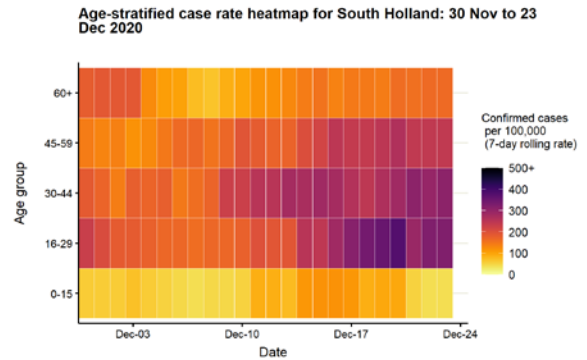
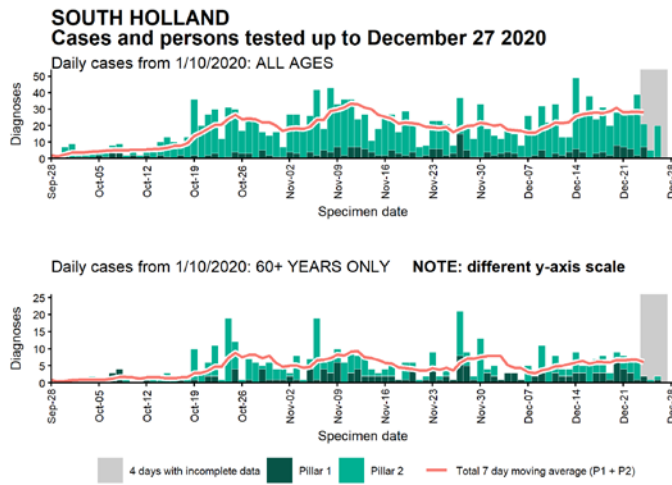
Data from SGSS. Produced by Outbreak Surveillance Team, PHE

Case numbers, testing numbers and positivity, South Derbyshire : 01 Sep to 27 Dec 2020



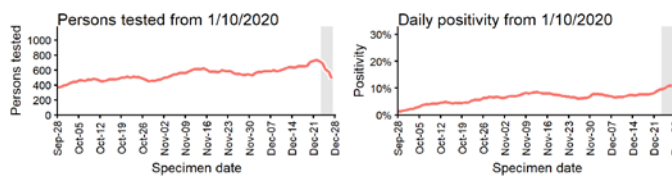
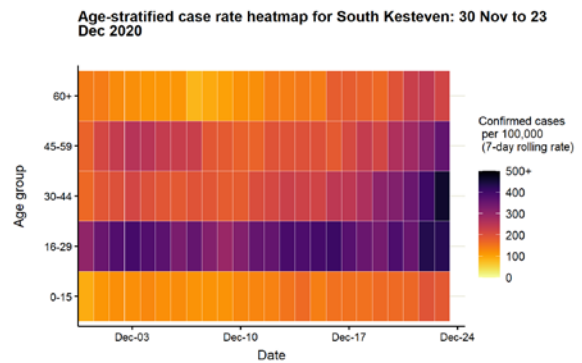
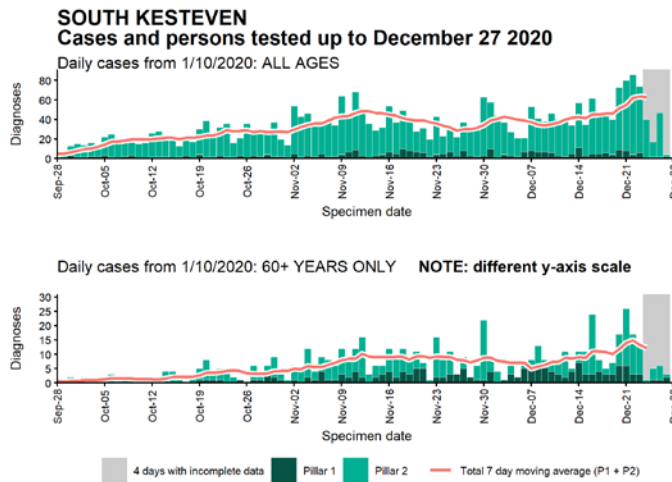
Data from SGSS. Produced by Outbreak Surveillance Team, PHE

Case numbers, testing numbers and positivity, South Holland : 01 Sep to 27 Dec 2020



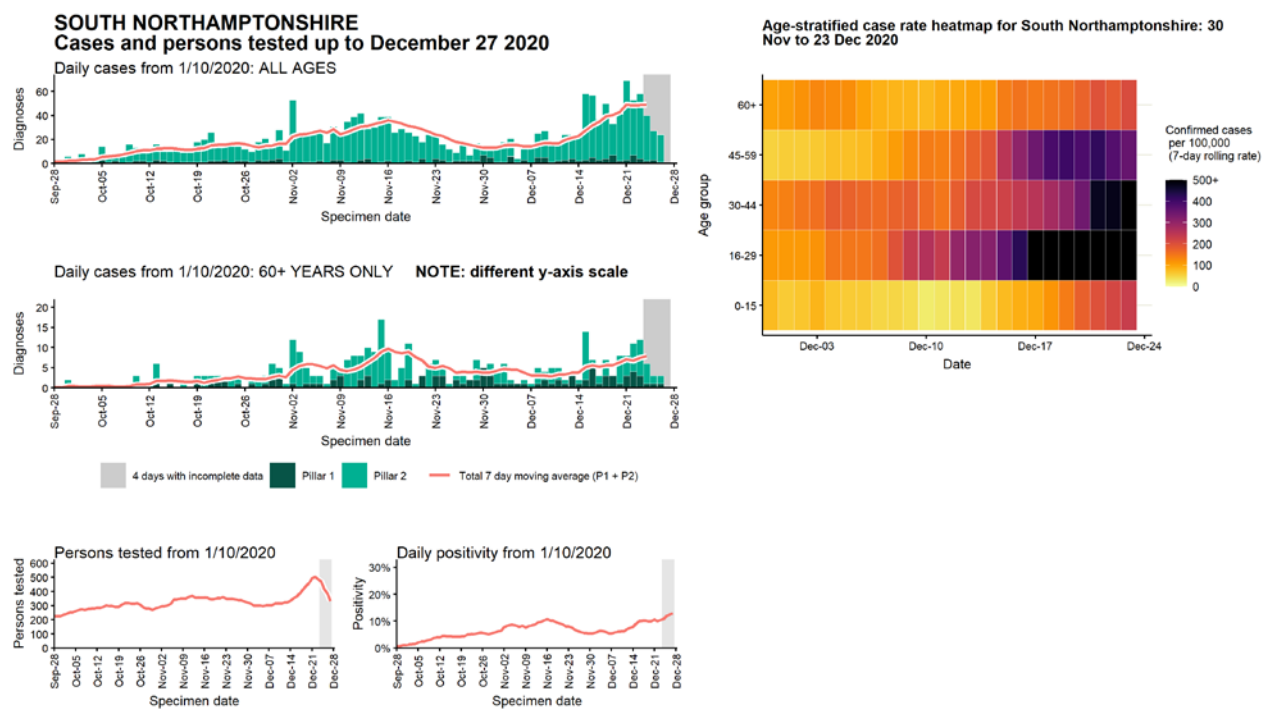
Data from SGSS. Produced by Outbreak Surveillance Team, PHE

Case numbers, testing numbers and positivity, South Kesteven : 01 Sep to 27 Dec 2020



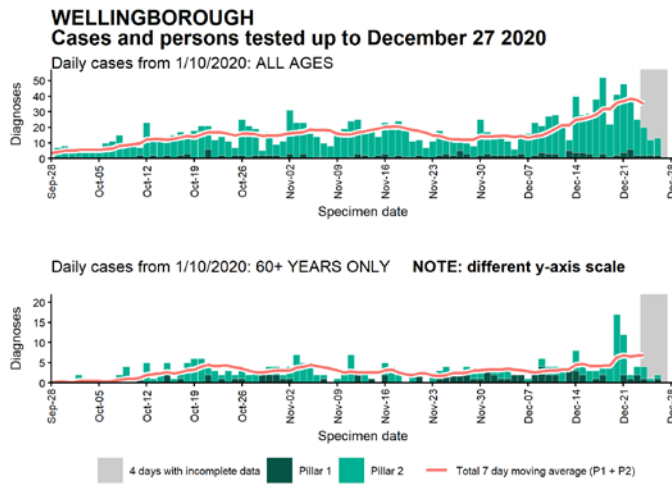
Data from SGSS. Produced by Outbreak Surveillance Team, PHE

Case numbers, testing numbers and positivity, South Northamptonshire : 01 Sep to 27 Dec 2020

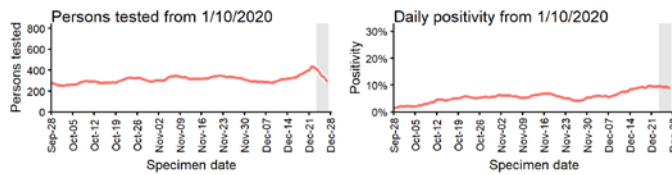
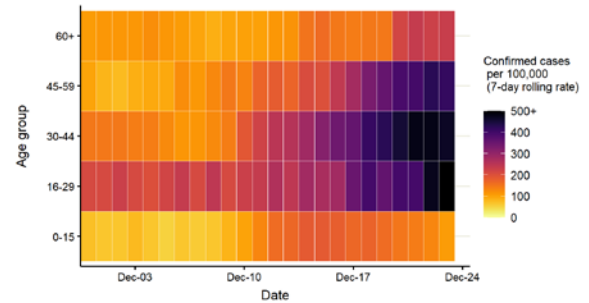


Data from SGSS. Produced by Outbreak Surveillance Team, PHE

Case numbers, testing numbers and positivity, Wellingborough : 01 Sep to 27 Dec 2020

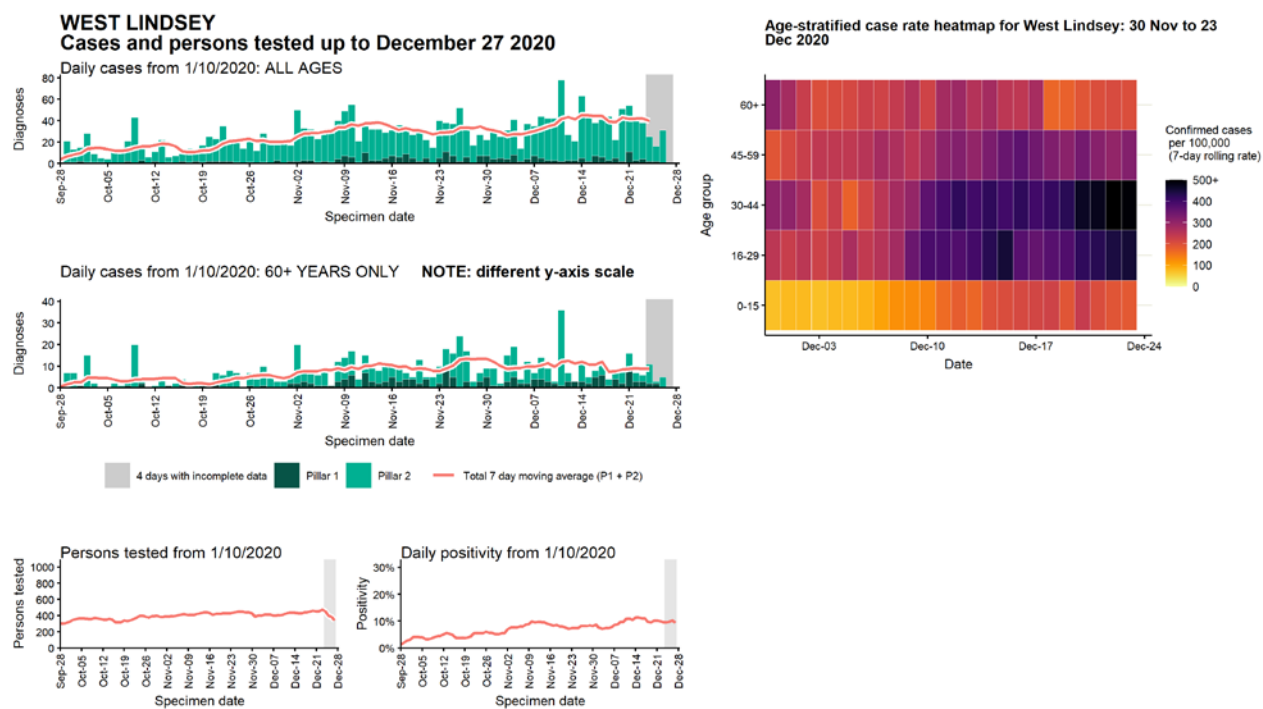


Age-stratified case rate heatmap for Wellingborough: 30 Nov to 23 Dec 2020



Data from SGSS. Produced by Outbreak Surveillance Team, PHE

Case numbers, testing numbers and positivity, West Lindsey : 01 Sep to 27 Dec 2020



Data from SGSS. Produced by Outbreak Surveillance Team, PHE

© Crown copyright 2020

www.gov.uk/dhsc

This publication is licensed under the terms of the Open Government Licence v3.0 except where otherwise stated. To view this licence, visit nationalarchives.gov.uk/doc/open-government-licence/version/3

Where we have identified any third party copyright information you will need to obtain permission from the copyright holders concerned.

